

# **EXHIBIT 13**

**Waiver Request of Section 74.1204**  
K201DP St. George, UT Minor Site Change  
92 Watts ERP  
Calvary Chapel of Twin Falls, Inc.  
August 2014

The proposed site is contained entirely inside the service contours of second-adjacent FM Translator K203EY St. George, UT

## **K203EY**

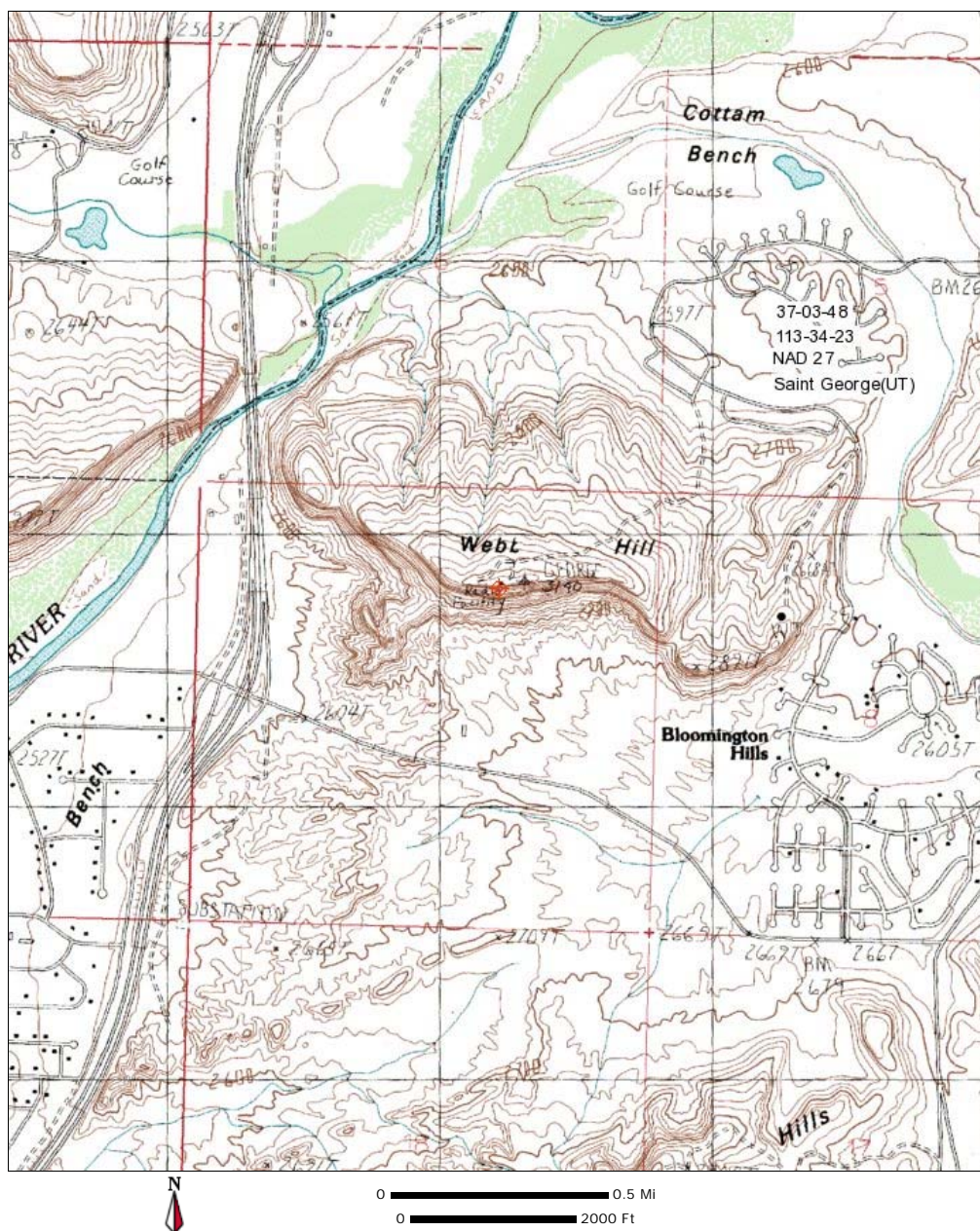
The proposed site is contained entirely inside the service contour of second-adjacent FM Translator K203EY, 203D, .205kW, St. George, UT. The level of least arriving protected F(50,50) signal at the proposed transmitter site is 116.5-dBu. Using the U/D method for calculating proposed interference, the interfering contour is 156.5-dBu (free-space contour method employed). The interfering signal would, in the worst case at the maximum radial, extend 1 meter, or 3 feet, from the center of radiation, which is proposed at 18 meters AGL. This interference contour does not touch the ground and begins 17 meters or 56 feet AGL. Attached is a portion of the Topographic Map St George(UT), and a Google Earth Map, showing the tower is located in on a communications site called Webb Hill where there are no tall buildings that would intersect the interference contour. Calvary Chapel of Twin Falls, Inc. respectfully requests a waiver of the FM translator contour overlap regulations with respect to second-adjacent channel FM Translator K203EY St. George, UT.

REFERENCE		Calvary Chapel Of Twin Falls, Inc.							DISPLAY DATES		
37 03 48.0 N.		CH# 201D - 88.1 MHz, Pwr= 0.092 kW, HAAT= 67.6 M, COR= 976 M							DATA 07-29-14		
113 34 23.0 W.		Average Protected F(50-50)= 8.29 km							SEARCH 08-04-14		
		Omni-directional									
CH CITY	CALL	TYPE STATE	ANT STATE	AZI ---	DI ST FILE #	LAT LNG	PWR(kW) HAAT(M)	INT(km) COR(M)	PRO(km) LICENSEE	*IN* (Overlap in km)	*OUT*
201D St. George	K201DP	CP	C_	39.0 219.0	0.04 BPFT20130514AAW	37 03 49.0 113 34 22.0	0.092 60	34.3 975	10.1 Calvary Chapel	-44.0*	-42.9*
201D St. George	K201DP	LIC	CN	163.1 343.2	25.09 BLFT19980624TC	36 50 49.0 113 29 28.0	0.010 572	58.4 1942	15.8 Calvary Chapel	-42.1*	-19.9
203D St. George	K203EY	LIC	C_	281.9 101.8	0.15 BLFT20111212AHX	37 03 49.0 113 34 29.0	0.205 32	1.0 948	6.8 Educational Media Foundati	-6.4*	-7.3*
201D Mesquite	K201HX	LIC	DC_	238.0 57.7	51.31 BLFT20130715ADP	36 49 05.1 114 03 40.9	0.250 537	8.6 537	2.7 Nevada Public Radio	30.0	6.2
201C1 Las Vegas	KCEP	LIC	CY	227.9 47.1	173.68 BLED19930617KA	36 00 31.0 115 00 22.0	10.000 364	144.2 1059	61.6 Economic Opportunity Board	18.2	73.7
203C1 Mesquite	KEKL	APP	CX	243.5 62.9	93.84 BPED20130429AAA	36 41 00.0 114 30 48.0	100.000 274	9.2 866	68.2 Southern Nevada Educationa	75.4	25.0
06-T Kanarrville, Etc.	K06KO	LI	D_N	34.5 214.7	57.31 BLTTV20061219ABF	37 29 16.0 113 12 18.0	0.150 463	11.4 1935	14.2 Iron County	25.6R	31.7M
06ZT Las Vegas	KGHD-LP	LI	D_N	227.0 46.2	180.84 BLTVL20130904ABP	35 56 46.0 115 02 34.0	0.999 724	17.1 1355	1.0 Obidia Porras	147.5R	33.3M
203C2 Mesquite	KEKL	LIC	CX	243.5 62.9	93.84 BLED20050824ADM	36 41 00.0 114 30 48.0	20.500 149	4.3 740	40.9 Southern Nevada Educationa	80.4	52.3
202D Cedar City	K202AW	LIC	DCN	36.7 217.0	79.86 BLFT19971201TA	37 38 18.0 113 01 52.0	0.009 429	1.6 2678	0.8 University Of Utah	69.6	66.8
06 D Cedar Canyon	K06JA-D	LI	D_N	46.5 227.0	87.00 BLDTV20090728ABI	37 35 56.9 112 51 23.2	0.015 -401	17.1 3246	1.0 Cedar Canyon Tv	18.2R	68.8M
06 D Laughlin	K06PG-D	LI	D_N	207.9 27.2	227.13 BLDTV20110217ACA	35 14 58.0 114 44 34.0	0.300 917	17.1 1484	1.0 Clark County School Distri	147.5R	79.6M
06 D Panaca	K06DM-D	LI	D_N	299.4 118.9	90.57 BLDTV20130123ADQ	37 27 34.0 114 27 57.0	0.060 892	9.8 2284	0.4 Lincoln County Tv District	10.2R	80.4M
06 D Ely	K06HT-D	LI	D_N	335.2 154.3	270.34 BLDTV20111216ABM	39 15 53.0 114 53 35.0	0.053 505	0.7 2396	58.0 White Pine Television Dist	147.5R	122.8M
06 D Prescott	K06AE-D	LI	D_N	153.2 334.0	294.62 BLDTV20111114AAT	34 41 14.0 112 07 00.0	0.500 1206	17.1 2347	1.0 Multimedia Holdings Corpor	147.5R	147.1M
06 D Manhattan	K06KQ-D	LI	D_N	299.2 117.0	348.43 BLDTV20110531AQP	38 32 16.0 117 03 57.0	0.020 378	0.7 2235	58.0 County Of Nye	147.5R	200.9M
06 T Newberry Springs	K06IQ	CP	D_N	229.4 47.5	373.78 BDFCDTV20120622ADG	34 50 03.0 116 40 45.0	0.208 69	17.1 618	1.0 County Of San Bernardi no A	147.5R	226.3M

Terrain database is USGS 03 SEC , R= 73.215 qualifying spacings or FCC minimum Spacings in KM, M= Margin in KM  
Contour distances are on direct line to and from reference station. Reference zone= , Co to 3rd adjacent.

All separation margins (if shown) include rounding

Ant Column: (D= DA Standard, Z= DA 73.215, N= Not DA 73.215, \_= Omni), Polarization (C,H,V,E), Beamtilt(Y,N,X)  
"\*"affixed to 'IN' or 'OUT' values = site inside protected contour.







Imagery Date: 5/25/2013

37°03'49.54"N 113°34'25.83"W elev 3125 ft

Eye alt 3709 ft