

TECHNICAL EXHIBIT
DTV MAXIMIZATION APPLICATION
STATION WTTK(DT)
KOKOMO, INDIANA
CH 29 780 KW (MAX-DA) 300 M

Technical Narrative

This Technical Exhibit supports an application for digital television (DTV) station WTTK(DT) for its "maximized" DTV operation at Kokomo, Indiana. This application requests a construction permit (CP) for WTTK(DT) digital television operation on channel 29 at Kokomo with a directional effective radiated power of 780 kilowatts. WTTK(DT) intends to use Dielectric THV-7A10-R 4C150 directional transmitting antenna for digital operation.

Proposed Facilities

Station WTTK(DT) proposes to operate DTV channel 29 from its authorized DTV construction permit facility. The antenna height above average terrain for the channel 29 DTV operation will be 300 meters. The proposed WTTK(DT) effective radiated power exceeds the Commission's *Appendix B* allocated maximum effective radiated power in some azimuthal directions for WTTK(DT).¹ Therefore, an allocation study was completed to ensure no prohibited interference would occur.

¹ See Seventh Report And Order And Eighth Further Notice Of Proposed Rule Making in the Matter of Advanced Television Systems and their Impact Upon the Existing Television Broadcast Service, MB Docket 87-268, Released August 6, 2007; Adopted August 1, 2007.

The proposed DTV transmitter site will be located at the authorized WTTK(DT) tower. Therefore, the proposed site location is:

39° 53' 20" North Latitude
86° 12' 07" West Longitude

A sketch of antenna and pertinent elevations are included as Figure 1.

The Appendix contains the horizontal plane radiation pattern for the proposed antenna system.

Figure 2 is a map showing the proposed DTV predicted coverage contour and the associated DTV appendix B Noise-Limited coverage contour. The extent of the contours have been calculated using the normal FCC prediction method. The Kokomo city limits were derived from information contained in the 2000 U.S. Census of Population and Housing.

Population Served

The herein proposed WTTK(DT) "maximized" facility is predicted to serve 2,491,479 persons, post-transition based upon the 2000 Census. WTTK(DT)'s associated Appendix B facility is predicted to serve 2,371,000 persons. Therefore, the herein proposed WTTK(DT) facility would serve more than 100% of WTTK(DT)'s Appendix B population.

Allocation Considerations

The proposed WTTK(DT) Channel 29 facility meets the requirements of Section 73.623 of the FCC Rules concerning

predicted interference to other Appendix B DTV allotments. Longley-Rice interference analyses were conducted pursuant to the requirements of the FCC Rules; OET Bulletin No. 69; and published FCC guidelines for preparation of such interference analyses. The Longley-Rice interference analyses were conducted using the software developed by du Treil, Lundin & Rackley, Inc. based on the FCC published software routines.² Stations selected for analysis were determined pursuant to the distance requirements outlined in the FCC DTV Processing Guidelines Public Notice. The results of the interference analyses for the proposed WTTK(DT) facility are summarized herein at Figure 3. As indicated therein, the proposed facility will meet the 0.5% criterion outlined in the FCC Rules and published guidelines with respect to all considered stations.³

Radiofrequency Electromagnetic Field Exposure

The proposed WTTK(DT) facilities were evaluated in terms of potential radiofrequency electromagnetic field exposure at ground level to workers and the general public. The radiation center for the proposed WTTK(DT) antenna is located 306 meters above ground level. The maximum effective radiated power is 780 kilowatts. A "worst case" downward relative field value of 0.25 is assumed for the antenna's downward radiation. The calculated power density at a point 2 meters above ground level is 0.018 mW/cm².

2 The duTreil, Lundin & Rackley, Inc. DTV interference analysis program is based on the program and procedures outlined by the FCC in the Sixth Report and Order; subsequent Memorandum Opinion and Order; and FCC OET Bulletin No. 69. A nominal grid size resolution of 2 km was employed.

3 Interference analysis results reflect the net change in interference to a given station considering the interference predicted to occur from all other stations (i.e. "masking") including the allotment facility for WTTK(DT). This properly reflects the net interference change for determining compliance with the FCC 0.5% *de minimis* standard.

This is less than 5 percent of the Commission's recommended limit of 0.38 mW/cm^2 for channel 29 for an "uncontrolled" environment.

Access to the transmitting site is restricted and appropriately marked with warning signs. As this is a multi-user site an agreement between the stations will control access. In the event that workers or other authorized personnel enter restricted areas or climb the tower, appropriate measures will be taken to assure worker safety with respect to radio frequency radiation exposure. Such measures include reducing the average exposure by spreading out the work over a longer period of time, wearing "accepted" RFR protective clothing and/or RFR exposure monitors or scheduling work when the stations are at reduced power or shut down. The proposed WTTK(DT) operation appears to be otherwise categorically excluded from environmental processing.

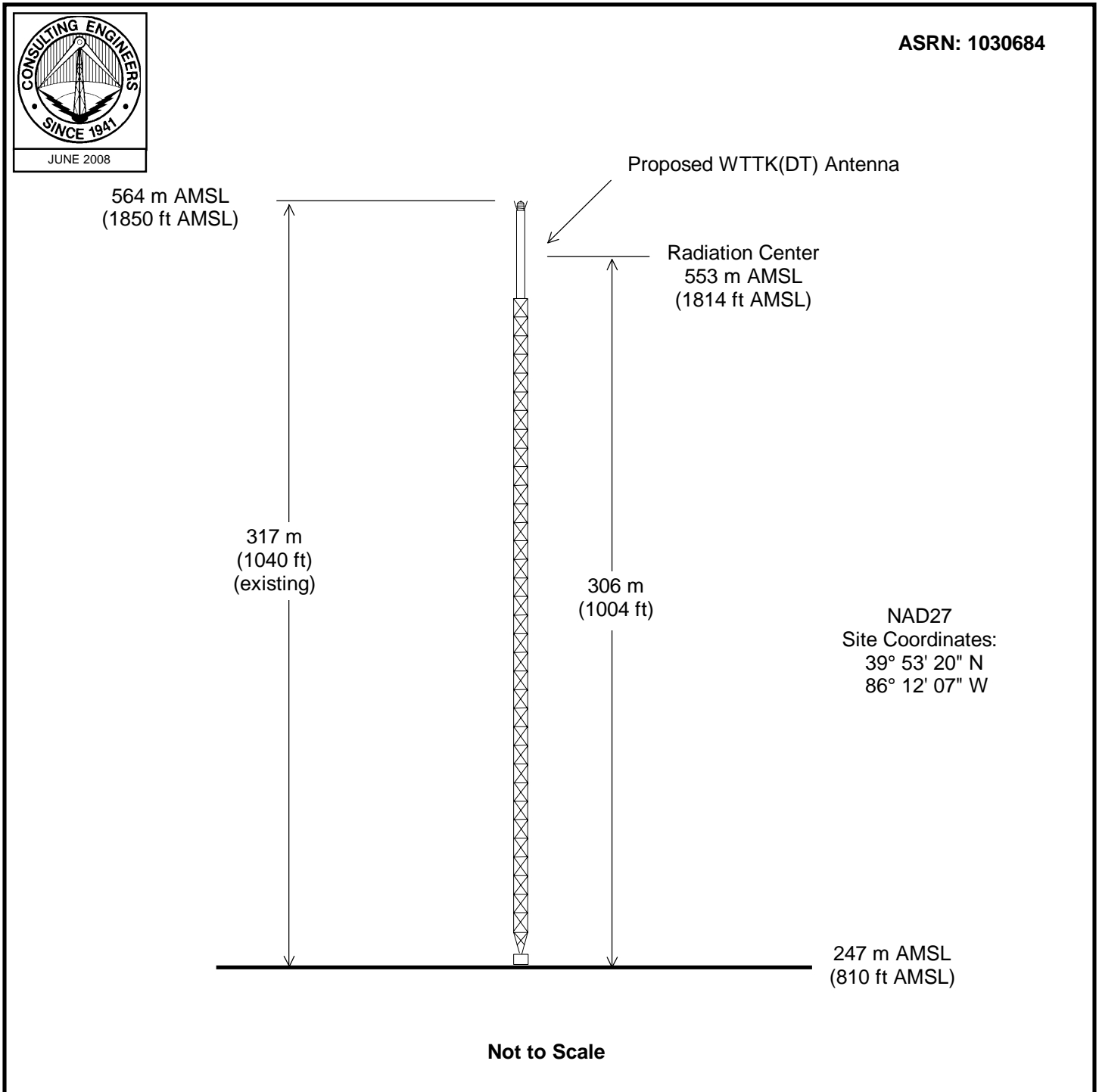
It is noted that this statement only addresses the potential for radiofrequency electromagnetic field exposure. All other aspects of the environmental processing analysis will be or already have been provided to the FCC by the tower owner.

Charles Cooper

du Treil, Lundin & Rackley, Inc.
201 Fletcher Avenue
Sarasota, Florida 32437
941.329.6000

June 17, 2008

Figure 1



ANTENNA AND SUPPORTING STRUCTURE

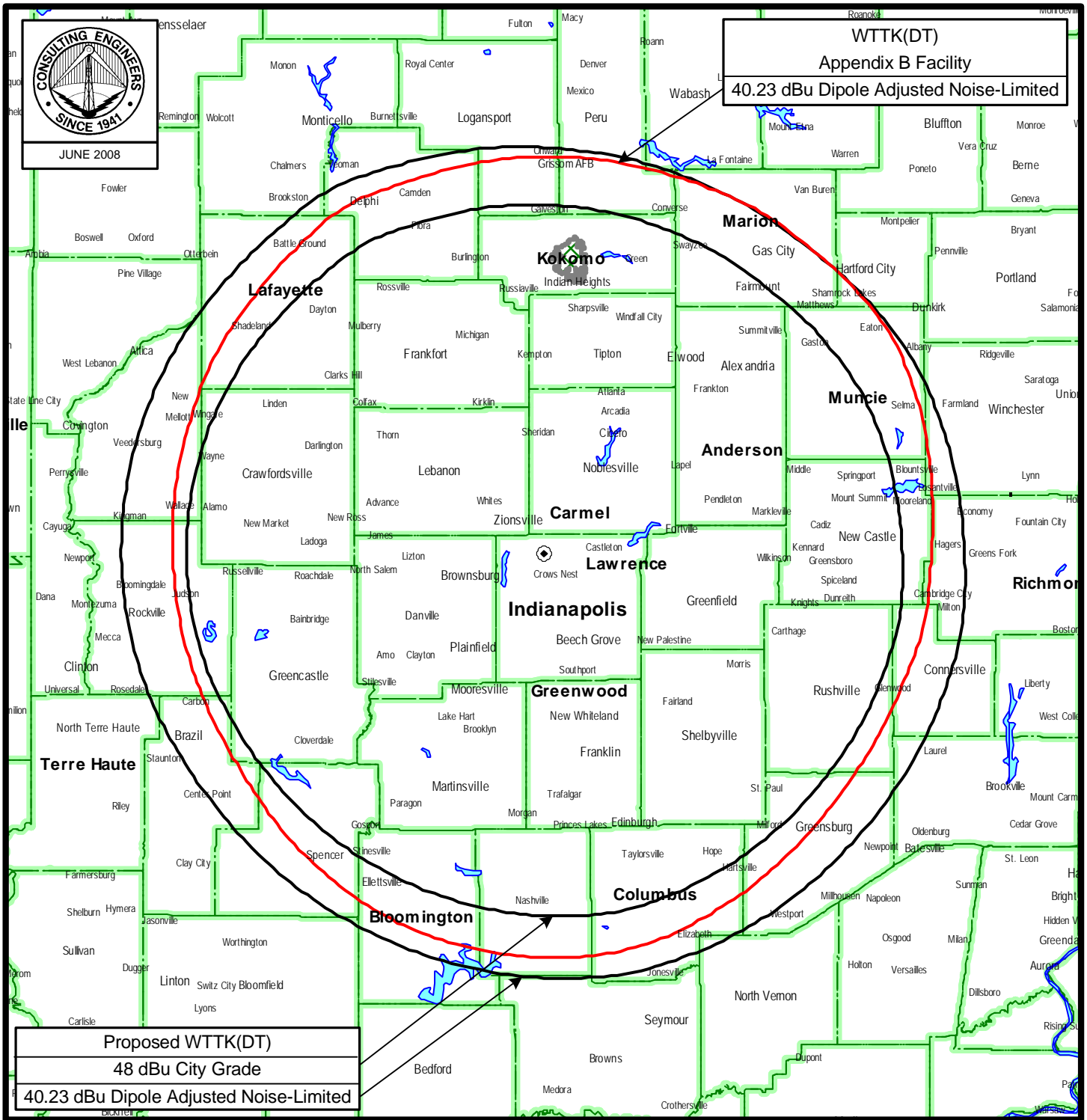
DTV STATION WTTK(DT)

KOKOMO, INDIANA

CH 29 780 KW (MAX-DA) 300 M

du Treil, Lundin & Rackley, Inc. Sarasota, Florida

Figure 2



PREDICTED COVERAGE CONTOURS

DTV STATION WTTK(DT)

KOKOMO, INDIANA

CH 29 780 KW (MAX-DA) 300 M

du Treil, Lundin & Rackley, Inc Sarasota, Florida

Figure 3

TW Census data selected 2000
Post Transition Data Base Selected /export/home/cdbs/pt_tvdb.sff

TV INTERFERENCE and SPACING ANALYSIS PROGRAM

Date: 06-16-2008 Time: 08:08:35

Record Selected for Analysis

WTTK USERRECORD-01 KOKOMO IN US
Channel 29 ERP 780. kW HAAT 300. m RCAMSL 00553 m
Latitude 039-53-20 Longitude 0086-12-07
Status APP Zone 2 Border
Dir Antenna Make CDB Model 00000000084705 Beam tilt N Ref Azimuth 350.
Last update Cutoff date Docket
Comments
Applicant

Cell Size for Service Analysis 2.0 km/side

Distance Increments for Longley-Rice Analysis 1.00 km

Facility meets maximum height/power limits

Azimuth (Deg)	ERP (kW)	HAAT (m)	41.0 dBu F(50,90) (km)
0.0	567.535	276.9	88.0
45.0	387.130	300.2	88.1
90.0	484.336	309.1	91.3
135.0	502.325	313.0	92.1
180.0	416.802	329.6	92.3
225.0	451.121	307.2	90.4
270.0	733.902	284.8	91.8
315.0	742.248	276.1	90.5

Evaluation toward Class A Stations

Station inside contour of Class A station
WKOG-LP 31 INDIANAPOLIS IN BLTTA 20050708AAW

Class A Evaluation Complete

SPACING VIOLATION FOUND BETWEEN STATION

WTTK 29 KOKOMO IN USERRECORD01

Figure 3

and station

SHORT TO: WTTK 29 KOKOMO IN BPCDT 20080430ACQ
039-53-20 0086-12- 7
Req. separation 196.3 Actual separation 0.0 Short 196.3 km

SHORT TO: WTTK 29 KOKOMO IN DTVPLN DTVP1070
39 -53-20 86 -12-07
Req. separation 223.7 Actual separation 0.0 Short 223.7 km

SHORT TO: WTTK 29 KOKOMO IN BLCT 19880523KI
040-20-20 0085-57-15
Req. separation 217.3 Actual separation 54.2 Short 163.1 km

SHORT TO: WXIX-TV 29 NEWPORT KY BLCDT 20000908ABI
039-07-19 0084-32-52
Req. separation 223.7 Actual separation 165.8 Short 57.9 km

SHORT TO: WXIX-TV 29 NEWPORT KY DTVPLN DTVP1071
39 -07-19 84 -32-52
Req. separation 223.7 Actual separation 165.8 Short 57.9 km

SHORT TO: WTIU 30 BLOOMINGTON IN BLET 20020919ABC
039-08-31 0086-29-43
Req. separation => 12.0 <= 106.0 Actual separation 86.7 Short 19.3(74.7) km

LANDMOBILE SPACING VIOLATIONS FOUND

NONE

Proposed facility OK to FCC Monitoring Stations

Proposed facility OK toward West Virginia quiet zone

Proposed facility OK toward Table Mountain

Proposed facility is within the Canadian coordination distance
Distance to border = 342.3km

Proposed facility is beyond the Mexican coordination distance

Proposed station is OK toward AM broadcast stations

Start of Interference Analysis

Proposed Station

Figure 3

Channel	Call	City/State	ARN
29	WTTK	KOKOMO IN	USERRECORD01

Stations Potentially Affected by Proposed Station

Chan	Call	City/State	Dist(km)	Status	Application Ref. No.
28	WSJV	ELKHART IN	192.0	PLN	DTVPLN -DTVP1037
28	WSJV	ELKHART IN	192.0	CP	BPCDT -20080328AAO
28	WPTO	OXFORD OH	165.5	LIC	BLEDT -20040714AAQ
28	WPTO	OXFORD OH	165.5	PLN	DTVPLN -DTVP1052
29	WMAQ-TV	CHICAGO IL	251.9	LIC	BLCDT -20010531ACY
29	WMAQ-TV	CHICAGO IL	251.9	PLN	DTVPLN -DTVP1069
29	W29CI	SALEM IL	282.4	APP	BSTA -20070117AFL
29	W29CI	SALEM IL	282.4	APP	BSTA -20060726ARU
29	W29CI	SALEM IL	282.4	LIC	BLTTA -20011130AAJ
29	WXIX-TV	NEWPORT KY	165.5	LIC	BLCDT -20000908ABI
29	WXIX-TV	NEWPORT KY	165.5	PLN	DTVPLN -DTVP1071
29	WOMS-CA	MUSKEGON MI	375.1	LIC	BLTTA -20060926AEA
29	WOMS-CA	MUSKEGON MI	375.1	APP	BDFCDTA -20060330ALZ
29	WGTE-TV	TOLEDO OH	304.9	LIC	BLEDT -20031110AKO
29	WGTE-TV	TOLEDO OH	304.9	PLN	DTVPLN -DTVP1086
30	WRGT-TV	DAYTON OH	167.2	CP	BPCDT -19991101ADJ
30	WRGT-TV	DAYTON OH	167.2	PLN	DTVPLN -DTVP1117
31	WKOG-LP	INDIANAPOLIS IN	14.1	LIC	BLTTA -20050708AAW

Analysis of Interference to Affected Station 1

Analysis of current record

Channel	Call	City/State	Application Ref. No.
28	WSJV	ELKHART IN	DTVPLN -DTVP1037

Stations Potentially Affecting This Station

Chan	Call	City/State	Dist(km)	Status	Application Ref. No.
27	WCIU-TV	CHICAGO IL	123.1	CP MOD	BMPCDT -20021202ABR
27	WCIU-TV	CHICAGO IL	123.1	PLN	DTVPLN -DTVP0998
27	WBGU-TV	BOWLING GREEN OH	198.1	PLN	DTVPLN -DTVP1014
27	WBGU-TV	BOWLING GREEN OH	198.1	CP	BPEDT -20080225AHC
28	WYZZ-TV	BLOOMINGTON IL	272.2	CP MOD	BMPCDT -20030805AHV
28	WYZZ-TV	BLOOMINGTON IL	272.2	PLN	DTVPLN -DTVP1036
28	WTVW	EVANSVILLE IN	411.5	CP	BPCDT -19991101ACY
28	WTVW	EVANSVILLE IN	411.5	PLN	DTVPLN -DTVP1038
28	WFUM	FLINT MI	266.2	CP	BPEDT -20080312ADF
28	WFUM	FLINT MI	266.2	PLN	DTVPLN -DTVP1043
28	WUAB	LORAIN OH	373.3	LIC	BLCDT -20020516AAG
28	WUAB	LORAIN OH	373.3	PLN	DTVPLN -DTVP1051
28	WPTO	OXFORD OH	310.3	LIC	BLEDT -20040714AAQ
28	WPTO	OXFORD OH	310.3	PLN	DTVPLN -DTVP1052
28	WTMJ-TV	MILWAUKEE WI	215.8	LIC	BLCDT -20001218ACR
28	WTMJ-TV	MILWAUKEE WI	215.8	PLN	DTVPLN -DTVP1063
29	WMAQ-TV	CHICAGO IL	123.1	LIC	BLCDT -20010531ACY
29	WMAQ-TV	CHICAGO IL	123.1	PLN	DTVPLN -DTVP1069
29	WTTK	KOKOMO IN	192.0	PLN	DTVPLN -DTVP1070

Figure 3

Channel	Call	City/State	Application Ref. No.
29	WTTK	KOKOMO IN	192.0 APP USERRECORD-01

Proposed station is beyond the site to nearest cell evaluation distance

Analysis of Interference to Affected Station 2

Analysis of current record

Channel	Call	City/State	Application Ref. No.
28	WSJV	ELKHART IN	BPCDT -20080328AAO

Stations Potentially Affecting This Station

Chan	Call	City/State	Dist(km)	Status	Application Ref. No.
27	WCIU-TV	CHICAGO IL	123.1	CP MOD	BMPCDT -20021202ABR
27	WCIU-TV	CHICAGO IL	123.1	PLN	DTVPLN -DTVP0998
27	WBGU-TV	BOWLING GREEN OH	198.1	PLN	DTVPLN -DTVP1014
27	WBGU-TV	BOWLING GREEN OH	198.1	CP	BPEDT -20080225AHC
28	WYZZ-TV	BLOOMINGTON IL	272.2	CP MOD	BMPCDT -20030805AHV
28	WYZZ-TV	BLOOMINGTON IL	272.2	PLN	DTVPLN -DTVP1036
28	WTVW	EVANSVILLE IN	411.5	CP	BPCDT -19991101ACY
28	WTVW	EVANSVILLE IN	411.5	PLN	DTVPLN -DTVP1038
28	WFUM	FLINT MI	266.2	CP	BPEDT -20080312ADF
28	WFUM	FLINT MI	266.2	PLN	DTVPLN -DTVP1043
28	WUAB	LORAIN OH	373.3	LIC	BLCDT -20020516AAG
28	WUAB	LORAIN OH	373.3	PLN	DTVPLN -DTVP1051
28	WPTO	OXFORD OH	310.3	LIC	BLEDT -20040714AAQ
28	WPTO	OXFORD OH	310.3	PLN	DTVPLN -DTVP1052
28	WTMJ-TV	MILWAUKEE WI	215.8	LIC	BLCDT -20001218ACR
28	WTMJ-TV	MILWAUKEE WI	215.8	PLN	DTVPLN -DTVP1063
29	WMAQ-TV	CHICAGO IL	123.1	LIC	BLCDT -20010531ACY
29	WMAQ-TV	CHICAGO IL	123.1	PLN	DTVPLN -DTVP1069
29	WTTK	KOKOMO IN	192.0	PLN	DTVPLN -DTVP1070
29	WTTK	KOKOMO IN	192.0	APP	USERRECORD-01

Proposed station is beyond the site to nearest cell evaluation distance

Analysis of Interference to Affected Station 3

Analysis of current record

Channel	Call	City/State	Application Ref. No.
28	WPTO	OXFORD OH	BLEDT -20040714AAQ

Stations Potentially Affecting This Station

Chan	Call	City/State	Dist(km)	Status	Application Ref. No.
27	WIPX	BLOOMINGTON IN	140.9	LIC	BLCDT -20040406AAH
27	WIPX	BLOOMINGTON IN	140.9	PLN	DTVPLN -DTVP0999

Figure 3

27	WOUB-TV	ATHENS OH	207.6	LIC	BLEDT	-20030411ABC
27	WOUB-TV	ATHENS OH	207.6	PLN	DTVPLN	-DTVP1013
28	WSJV	ELKHART IN	310.3	PLN	DTVPLN	-DTVP1037
28	WSJV	ELKHART IN	310.3	CP	BPCDT	-20080328AAO
28	WTVW	EVANSVILLE IN	273.3	CP	BPCDT	-19991101ACY
28	WTVW	EVANSVILLE IN	273.3	PLN	DTVPLN	-DTVP1038
28	WUAB	LORAIN OH	347.1	LIC	BLCDDT	-20020516AAG
28	WUAB	LORAIN OH	347.1	PLN	DTVPLN	-DTVP1051
29	WTTK	KOKOMO IN	165.5	PLN	DTVPLN	-DTVP1070
29	WXIX-TV	NEWPORT KY	0.0	LIC	BLCDDT	-20000908ABI
29	WXIX-TV	NEWPORT KY	0.0	PLN	DTVPLN	-DTVP1071
29	WTTK	KOKOMO IN	165.5	APP	USERRECORD-01	

Proposal causes no interference

#####

Analysis of Interference to Affected Station 4

Channel	Call	City/State	Application Ref. No.
28	WPTO	OXFORD OH	DTVPLN -DTVP1052

Stations Potentially Affecting This Station

Chan	Call	City/State	Dist(km)	Status	Application Ref. No.
27	WIPX	BLOOMINGTON IN	140.9	LIC	BLCDDT -20040406AAH
27	WIPX	BLOOMINGTON IN	140.9	PLN	DTVPLN -DTVP0999
27	WOUB-TV	ATHENS OH	207.6	LIC	BLEDT -20030411ABC
27	WOUB-TV	ATHENS OH	207.6	PLN	DTVPLN -DTVP1013
28	WSJV	ELKHART IN	310.3	PLN	DTVPLN -DTVP1037
28	WSJV	ELKHART IN	310.3	CP	BPCDDT -20080328AAO
28	WTVW	EVANSVILLE IN	273.3	CP	BPCDDT -19991101ACY
28	WTVW	EVANSVILLE IN	273.3	PLN	DTVPLN -DTVP1038
28	WUAB	LORAIN OH	347.1	LIC	BLCDDT -20020516AAG
28	WUAB	LORAIN OH	347.1	PLN	DTVPLN -DTVP1051
29	WTTK	KOKOMO IN	165.5	PLN	DTVPLN -DTVP1070
29	WXIX-TV	NEWPORT KY	0.0	LIC	BLCDDT -20000908ABI
29	WXIX-TV	NEWPORT KY	0.0	PLN	DTVPLN -DTVP1071
29	WTTK	KOKOMO IN	165.5	APP	USERRECORD-01

Proposal causes no interference

#####

Analysis of Interference to Affected Station 5

Channel	Call	City/State	Application Ref. No.
29	WMAQ-TV	CHICAGO IL	BLCDDT -20010531ACY

Stations Potentially Affecting This Station

Chan	Call	City/State	Dist(km)	Status	Application Ref. No.
28	WYZZ-TV	BLOOMINGTON IL	188.2	CP MOD	BMPDDT -20030805AHV

Figure 3

28	WYZZ-TV	BLOOMINGTON IL	188.2	PLN	DTVPLN	-DTVP1036
28	WSJV	ELKHART IN	123.1	PLN	DTVPLN	-DTVP1037
28	WSJV	ELKHART IN	123.1	CP	BPCDDT	-20080328AAO
28	WTMJ-TV	MILWAUKEE WI	136.5	LIC	BLCDDT	-20001218ACR
28	WTMJ-TV	MILWAUKEE WI	136.5	PLN	DTVPLN	-DTVP1063
29	WTTK	KOKOMO IN	251.9	PLN	DTVPLN	-DTVP1070
29	WXIX-TV	NEWPORT KY	402.5	LIC	BLCDDT	-20000908ABI
29	WXIX-TV	NEWPORT KY	402.5	PLN	DTVPLN	-DTVP1071
29	WGTU	TRAVERSE CITY MI	380.5	PLN	DTVPLN	-DTVP1074
29	WGTE-TV	TOLEDO OH	349.4	LIC	BLEDT	-20031110AKO
29	WGTE-TV	TOLEDO OH	349.4	PLN	DTVPLN	-DTVP1086
30	WMBD-TV	PEORIA IL	210.7	CP MOD	BMPDDT	-20060314ABP
30	WMBD-TV	PEORIA IL	210.7	PLN	DTVPLN	-DTVP1107
29	WTTK	KOKOMO IN	251.9	APP	USERRECORD-01	

Total scenarios = 4

Result key: 1
 Scenario 1 Affected station 5
 Before Analysis

Results for: 29A IL CHICAGO BLCDDT 20010531ACY LIC

HAAT 508.0 m, ATV ERP 350.0 kW	POPULATION	AREA (sq km)
within Noise Limited Contour	9540682	32513.9
not affected by terrain losses	9539142	32481.8
lost to NTSC IX	0	0.0
lost to additional IX by ATV	15593	373.2
lost to ATV IX only	15593	373.2
lost to all IX	15593	373.2

Potential Interfering Stations Included in above Scenario 1

28A IN ELKHART	DTVPLN	DTVP1037	PLN
28A WI MILWAUKEE	BLCDDT	20001218ACR	LIC
29A IN KOKOMO	DTVPLN	DTVP1070	PLN

After Analysis

Results for: 29A IL CHICAGO BLCDDT 20010531ACY LIC

HAAT 508.0 m, ATV ERP 350.0 kW	POPULATION	AREA (sq km)
within Noise Limited Contour	9540682	32513.9
not affected by terrain losses	9539142	32481.8
lost to NTSC IX	0	0.0
lost to additional IX by ATV	15593	373.2
lost to ATV IX only	15593	373.2
lost to all IX	15593	373.2

Potential Interfering Stations Included in above Scenario 1

28A IN ELKHART	DTVPLN	DTVP1037	PLN
28A WI MILWAUKEE	BLCDDT	20001218ACR	LIC
29A IN KOKOMO	USERRECORD01		APP

Percent new IX = 0.0000%

Figure 3

Result key: 2
 Scenario 2 Affected station 5
 Before Analysis

Results for: 29A IL CHICAGO BLC DT 20010531ACY LIC
 HAAT 508.0 m, ATV ERP 350.0 kW

	POPULATION	AREA (sq km)
within Noise Limited Contour	9540682	32513.9
not affected by terrain losses	9539142	32481.8
lost to NTSC IX	0	0.0
lost to additional IX by ATV	18625	401.3
lost to ATV IX only	18625	401.3
lost to all IX	18625	401.3

Potential Interfering Stations Included in above Scenario 2

28A IN ELKHART	DTVPLN	DTVP1037	PLN
28A WI MILWAUKEE	DTVPLN	DTVP1063	PLN
29A IN KOKOMO	DTVPLN	DTVP1070	PLN

After Analysis

Results for: 29A IL CHICAGO BLC DT 20010531ACY LIC
 HAAT 508.0 m, ATV ERP 350.0 kW

	POPULATION	AREA (sq km)
within Noise Limited Contour	9540682	32513.9
not affected by terrain losses	9539142	32481.8
lost to NTSC IX	0	0.0
lost to additional IX by ATV	18625	401.3
lost to ATV IX only	18625	401.3
lost to all IX	18625	401.3

Potential Interfering Stations Included in above Scenario 2

28A IN ELKHART	DTVPLN	DTVP1037	PLN
28A WI MILWAUKEE	DTVPLN	DTVP1063	PLN
29A IN KOKOMO	USERRECORD01		APP

Percent new IX = 0.0000%

Result key: 3
 Scenario 3 Affected station 5
 Before Analysis

Results for: 29A IL CHICAGO BLC DT 20010531ACY LIC
 HAAT 508.0 m, ATV ERP 350.0 kW

	POPULATION	AREA (sq km)
within Noise Limited Contour	9540682	32513.9
not affected by terrain losses	9539142	32481.8
lost to NTSC IX	0	0.0
lost to additional IX by ATV	15798	385.3
lost to ATV IX only	15798	385.3
lost to all IX	15798	385.3

Potential Interfering Stations Included in above Scenario 3

Figure 3

28A IN ELKHART	BPCDT	20080328AAO	CP
28A WI MILWAUKEE	BLC DT	20001218ACR	LIC
29A IN KOKOMO	DTVPLN	DTVP1070	PLN

After Analysis

Results for: 29A IL CHICAGO BLC DT 20010531ACY LIC
 HAAT 508.0 m, ATV ERP 350.0 kW

	POPULATION	AREA (sq km)
within Noise Limited Contour	9540682	32513.9
not affected by terrain losses	9539142	32481.8
lost to NTSC IX	0	0.0
lost to additional IX by ATV	15798	385.3
lost to ATV IX only	15798	385.3
lost to all IX	15798	385.3

Potential Interfering Stations Included in above Scenario 3

28A IN ELKHART	BPCDT	20080328AAO	CP
28A WI MILWAUKEE	BLC DT	20001218ACR	LIC
29A IN KOKOMO	USERRECORD01		APP

Percent new IX = 0.0000%

Result key: 4
 Scenario 4 Affected station 5
 Before Analysis

Results for: 29A IL CHICAGO BLC DT 20010531ACY LIC
 HAAT 508.0 m, ATV ERP 350.0 kW

	POPULATION	AREA (sq km)
within Noise Limited Contour	9540682	32513.9
not affected by terrain losses	9539142	32481.8
lost to NTSC IX	0	0.0
lost to additional IX by ATV	18830	413.3
lost to ATV IX only	18830	413.3
lost to all IX	18830	413.3

Potential Interfering Stations Included in above Scenario 4

28A IN ELKHART	BPCDT	20080328AAO	CP
28A WI MILWAUKEE	DTVPLN	DTVP1063	PLN
29A IN KOKOMO	DTVPLN	DTVP1070	PLN

After Analysis

Results for: 29A IL CHICAGO BLC DT 20010531ACY LIC
 HAAT 508.0 m, ATV ERP 350.0 kW

	POPULATION	AREA (sq km)
within Noise Limited Contour	9540682	32513.9
not affected by terrain losses	9539142	32481.8
lost to NTSC IX	0	0.0
lost to additional IX by ATV	18830	413.3
lost to ATV IX only	18830	413.3
lost to all IX	18830	413.3

Potential Interfering Stations Included in above Scenario 4

Figure 3

```

28A IN ELKHART      BPCDT      20080328AAO  CP
28A WI MILWAUKEE    DTVPLN     DTVP1063    PLN
29A IN KOKOMO        USERRECORD01  APP

```

Percent new IX = 0.0000%

Worst case new IX 0.0000% Scenario 1

#####

Analysis of Interference to Affected Station 6

Analysis of current record

```

Channel  Call      City/State      Application Ref. No.
29      WMAQ-TV     CHICAGO IL      DTVPLN     -DTV1069

```

Stations Potentially Affecting This Station

Chan	Call	City/State	Dist(km)	Status	Application Ref. No.
28	WYZZ-TV	BLOOMINGTON IL	188.2	CP MOD	BMPCDT -20030805AHV
28	WYZZ-TV	BLOOMINGTON IL	188.2	PLN	DTVPLN -DTV1036
28	WSJV	ELKHART IN	123.1	PLN	DTVPLN -DTV1037
28	WSJV	ELKHART IN	123.1	CP	BPCDT -20080328AAO
28	WTMJ-TV	MILWAUKEE WI	136.5	LIC	BLCDT -20001218ACR
28	WTMJ-TV	MILWAUKEE WI	136.5	PLN	DTVPLN -DTV1063
29	WTTK	KOKOMO IN	251.9	PLN	DTVPLN -DTV1070
29	WXIX-TV	NEWPORT KY	402.5	LIC	BLCDT -20000908ABI
29	WXIX-TV	NEWPORT KY	402.5	PLN	DTVPLN -DTV1071
29	WGTU	TRAVERSE CITY MI	380.5	PLN	DTVPLN -DTV1074
29	WGTE-TV	TOLEDO OH	349.4	LIC	BLEDT -20031110AKO
29	WGTE-TV	TOLEDO OH	349.4	PLN	DTVPLN -DTV1086
30	WMBD-TV	PEORIA IL	210.7	CP MOD	BMPCDT -20060314ABP
30	WMBD-TV	PEORIA IL	210.7	PLN	DTVPLN -DTV1107
29	WTTK	KOKOMO IN	251.9	APP	USERRECORD-01

Total scenarios = 4

```

Result key:      5
Scenario        1 Affected station      6
Before Analysis

```

```

Results for: 29A IL CHICAGO      DTVPLN     DTVP1069    PLN
HAAT  508.0 m, ATV ERP  350.0 kW
      POPULATION  AREA (sq km)
within Noise Limited Contour  9540682  32513.9
not affected by terrain losses  9539142  32481.8
lost to NTSC IX                0        0.0
lost to additional IX by ATV    15593   373.2
lost to ATV IX only            15593   373.2
lost to all IX                 15593   373.2

```

Potential Interfering Stations Included in above Scenario 1

Figure 3

```

28A IN ELKHART      DTVPLN     DTVP1037    PLN
28A WI MILWAUKEE    BLCDT      20001218ACR  LIC
29A IN KOKOMO        DTVPLN     DTVP1070    PLN

```

After Analysis

```

Results for: 29A IL CHICAGO      DTVPLN     DTVP1069    PLN
HAAT  508.0 m, ATV ERP  350.0 kW
      POPULATION  AREA (sq km)
within Noise Limited Contour  9540682  32513.9
not affected by terrain losses  9539142  32481.8
lost to NTSC IX                0        0.0
lost to additional IX by ATV    15593   373.2
lost to ATV IX only            15593   373.2
lost to all IX                 15593   373.2

```

Potential Interfering Stations Included in above Scenario 1

```

28A IN ELKHART      DTVPLN     DTVP1037    PLN
28A WI MILWAUKEE    BLCDT      20001218ACR  LIC
29A IN KOKOMO        USERRECORD01  APP

```

Percent new IX = 0.0000%

```

Result key:      6
Scenario        2 Affected station      6
Before Analysis

```

```

Results for: 29A IL CHICAGO      DTVPLN     DTVP1069    PLN
HAAT  508.0 m, ATV ERP  350.0 kW
      POPULATION  AREA (sq km)
within Noise Limited Contour  9540682  32513.9
not affected by terrain losses  9539142  32481.8
lost to NTSC IX                0        0.0
lost to additional IX by ATV    18625   401.3
lost to ATV IX only            18625   401.3
lost to all IX                 18625   401.3

```

Potential Interfering Stations Included in above Scenario 2

```

28A IN ELKHART      DTVPLN     DTVP1037    PLN
28A WI MILWAUKEE    DTVPLN     DTVP1063    PLN
29A IN KOKOMO        DTVPLN     DTVP1070    PLN

```

After Analysis

```

Results for: 29A IL CHICAGO      DTVPLN     DTVP1069    PLN
HAAT  508.0 m, ATV ERP  350.0 kW
      POPULATION  AREA (sq km)
within Noise Limited Contour  9540682  32513.9
not affected by terrain losses  9539142  32481.8
lost to NTSC IX                0        0.0
lost to additional IX by ATV    18625   401.3
lost to ATV IX only            18625   401.3
lost to all IX                 18625   401.3

```

Potential Interfering Stations Included in above Scenario 2

Figure 3

28A IN ELKHART DTVPLN DTVP1037 PLN
 28A WI MILWAUKEE DTVPLN DTVP1063 PLN
 29A IN KOKOMO USERRECORD01 APP

Percent new IX = 0.0000%

Result key: 7
 Scenario 3 Affected station 6
 Before Analysis

Results for: 29A IL CHICAGO DTVPLN DTVP1069 PLN
 HAAT 508.0 m, ATV ERP 350.0 kW

	POPULATION	AREA (sq km)
within Noise Limited Contour	9540682	32513.9
not affected by terrain losses	9539142	32481.8
lost to NTSC IX	0	0.0
lost to additional IX by ATV	15798	385.3
lost to ATV IX only	15798	385.3
lost to all IX	15798	385.3

Potential Interfering Stations Included in above Scenario 3

28A IN ELKHART BPCDT 20080328AAO CP
 28A WI MILWAUKEE BLCDT 20001218ACR LIC
 29A IN KOKOMO DTVPLN DTVP1070 PLN

After Analysis

Results for: 29A IL CHICAGO DTVPLN DTVP1069 PLN
 HAAT 508.0 m, ATV ERP 350.0 kW

	POPULATION	AREA (sq km)
within Noise Limited Contour	9540682	32513.9
not affected by terrain losses	9539142	32481.8
lost to NTSC IX	0	0.0
lost to additional IX by ATV	15798	385.3
lost to ATV IX only	15798	385.3
lost to all IX	15798	385.3

Potential Interfering Stations Included in above Scenario 3

28A IN ELKHART BPCDT 20080328AAO CP
 28A WI MILWAUKEE BLCDT 20001218ACR LIC
 29A IN KOKOMO USERRECORD01 APP

Percent new IX = 0.0000%

Result key: 8
 Scenario 4 Affected station 6
 Before Analysis

Results for: 29A IL CHICAGO DTVPLN DTVP1069 PLN
 HAAT 508.0 m, ATV ERP 350.0 kW

	POPULATION	AREA (sq km)
within Noise Limited Contour	9540682	32513.9
not affected by terrain losses	9539142	32481.8
lost to NTSC IX	0	0.0

Figure 3

lost to additional IX by ATV 18830 413.3
 lost to ATV IX only 18830 413.3
 lost to all IX 18830 413.3

Potential Interfering Stations Included in above Scenario 4

28A IN ELKHART BPCDT 20080328AAO CP
 28A WI MILWAUKEE DTVPLN DTVP1063 PLN
 29A IN KOKOMO DTVPLN DTVP1070 PLN

After Analysis

Results for: 29A IL CHICAGO DTVPLN DTVP1069 PLN
 HAAT 508.0 m, ATV ERP 350.0 kW

	POPULATION	AREA (sq km)
within Noise Limited Contour	9540682	32513.9
not affected by terrain losses	9539142	32481.8
lost to NTSC IX	0	0.0
lost to additional IX by ATV	18830	413.3
lost to ATV IX only	18830	413.3
lost to all IX	18830	413.3

Potential Interfering Stations Included in above Scenario 4

28A IN ELKHART BPCDT 20080328AAO CP
 28A WI MILWAUKEE DTVPLN DTVP1063 PLN
 29A IN KOKOMO USERRECORD01 APP

Percent new IX = 0.0000%

Worst case new IX 0.0000% Scenario 1

#####

Analysis of Interference to Affected Station 7

Analysis of current record

Channel	Call	City/State	Application	Ref. No.
29	W29CI	SALEM IL	BSTA	-20070117AFL

Stations Potentially Affecting This Station

Chan	Call	City/State	Dist(km)	Status	Application	Ref. No.
21	WPXS	MOUNT VERNON IL	50.7	CP MOD	BMPCDT	-20070108AAP
21	WPXS	MOUNT VERNON IL	42.5	PLN	DTVPLN	-DTVP0761
21	WPXS	MOUNT VERNON IL	50.7	APP	BMPCDT	-20070413AGE
22	WVUT	VINCENNES IN	132.6	CP	BPEDT	-20080530AAN
22	WVUT	VINCENNES IN	132.6	PLN	DTVPLN	-DTVP0804
22	WVUT	VINCENNES IN	132.6	LIC	BLET	-344
22	KBSI	CAPE GIRARDEAU MO	137.6	LIC	BLCDT	-20041213ABC
22	KBSI	CAPE GIRARDEAU MO	137.6	PLN	DTVPLN	-DTVP0810
26	KPLR-TV	ST. LOUIS MO	115.2	LIC	BLCDT	-20030812ABY
26	KPLR-TV	ST. LOUIS MO	115.2	PLN	DTVPLN	-DTVP0962
29	WMAQ-TV	CHICAGO IL	386.3	LIC	BLCDT	-20010531ACY
29	WMAQ-TV	CHICAGO IL	386.3	PLN	DTVPLN	-DTVP1069

Figure 3

29	WTTK	KOKOMO IN	282.4	CP	BPCDT	-20080430ACQ
29	WTTK	KOKOMO IN	282.4	PLN	DTVPLN	-DTVP1070
29	WTTK	KOKOMO IN	327.5	LIC	BLCT	-19880523KI
29	WXIX-TV	NEWPORT KY	390.3	LIC	BLCDDT	-20000908ABI
29	WXIX-TV	NEWPORT KY	390.3	PLN	DTVPLN	-DTVP1071
29	WKPD	PADUCAH KY	165.7	LIC	BLET	-19950417KH
29	K67GR	ST. LOUIS MO	125.8	APP	BPTTL	-20020429ACQ
29	WKNO	MEMPHIS TN	385.8	CP MOD	BMPEDT	-20021112ACA
29	WKNO	MEMPHIS TN	385.8	PLN	DTVPLN	-DTVP1094
29	WKNO	MEMPHIS TN	385.8	LIC	BLEDT	-20060627ABE
30	KDNL-TV	ST. LOUIS MO	115.6	LIC	BLCT	-19800312KG
31	KDNL-TV	ST. LOUIS MO	115.6	LIC	BLCDDT	-20021216AAE
31	KDNL-TV	ST. LOUIS MO	115.6	PLN	DTVPLN	-DTVP1150
43	KTVI	ST LOUIS MO	119.5	LIC	BLCDDT	-20040903AAY
43	KTVI	ST. LOUIS MO	119.5	PLN	DTVPLN	-DTVP1543
44	WRSP-TV	SPRINGFIELD IL	142.7	LIC	BLCDDT	-20050317ADQ
44	WRSP-TV	SPRINGFIELD IL	142.7	PLN	DTVPLN	-DTVP1573
29	WTTK	KOKOMO IN	282.4	APP	USERRECORD-01	

Proposal causes no interference

#####

Analysis of Interference to Affected Station 8

Analysis of current record

Channel	Call	City/State	Application Ref. No.
29	W29CI	SALEM IL	BSTA -20060726ARU

Stations Potentially Affecting This Station

Chan	Call	City/State	Dist(km)	Status	Application Ref. No.
21	WPXS	MOUNT VERNON IL	50.7	CP MOD	BMPCDT -20070108AAP
21	WPXS	MOUNT VERNON IL	42.5	PLN	DTVPLN -DTVP0761
21	WPXS	MOUNT VERNON IL	50.7	APP	BMPCDT -20070413AGE
22	WVUT	VINCENNES IN	132.6	CP	BPEDT -20080530AAN
22	WVUT	VINCENNES IN	132.6	PLN	DTVPLN -DTVP0804
22	WVUT	VINCENNES IN	132.6	LIC	BLET -344
22	KBSI	CAPE GIRARDEAU MO	137.6	LIC	BLCDDT -20041213ABC
22	KBSI	CAPE GIRARDEAU MO	137.6	PLN	DTVPLN -DTVP0810
26	KPLR-TV	ST. LOUIS MO	115.2	LIC	BLCDDT -20030812ABY
26	KPLR-TV	ST. LOUIS MO	115.2	PLN	DTVPLN -DTVP0962
29	WMAQ-TV	CHICAGO IL	386.3	LIC	BLCDDT -20010531ACY
29	WMAQ-TV	CHICAGO IL	386.3	PLN	DTVPLN -DTVP1069
29	WTTK	KOKOMO IN	282.4	CP	BPCDDT -20080430ACQ
29	WTTK	KOKOMO IN	282.4	PLN	DTVPLN -DTVP1070
29	WTTK	KOKOMO IN	327.5	LIC	BLCT -19880523KI
29	WXIX-TV	NEWPORT KY	390.3	LIC	BLCDDT -20000908ABI
29	WXIX-TV	NEWPORT KY	390.3	PLN	DTVPLN -DTVP1071
29	WKPD	PADUCAH KY	165.7	LIC	BLET -19950417KH
29	K67GR	ST. LOUIS MO	125.8	APP	BPTTL -20020429ACQ
29	WKNO	MEMPHIS TN	385.8	CP MOD	BMPEDT -20021112ACA
29	WKNO	MEMPHIS TN	385.8	PLN	DTVPLN -DTVP1094
29	WKNO	MEMPHIS TN	385.8	LIC	BLEDT -20060627ABE
30	KDNL-TV	ST. LOUIS MO	115.6	LIC	BLCT -19800312KG
31	KDNL-TV	ST. LOUIS MO	115.6	LIC	BLCDDT -20021216AAE

Figure 3

31	KDNL-TV	ST. LOUIS MO	115.6	PLN	DTVPLN	-DTVP1150
43	KTVI	ST LOUIS MO	119.5	LIC	BLCDDT	-20040903AAY
43	KTVI	ST. LOUIS MO	119.5	PLN	DTVPLN	-DTVP1543
44	WRSP-TV	SPRINGFIELD IL	142.7	LIC	BLCDDT	-20050317ADQ
44	WRSP-TV	SPRINGFIELD IL	142.7	PLN	DTVPLN	-DTVP1573
29	WTTK	KOKOMO IN	282.4	APP	USERRECORD-01	

Proposal causes no interference

#####

Analysis of Interference to Affected Station 9

Analysis of current record

Channel	Call	City/State	Application Ref. No.
29	W29CI	SALEM IL	BLTTA -20011130AAJ

Stations Potentially Affecting This Station

Chan	Call	City/State	Dist(km)	Status	Application Ref. No.
21	WPXS	MOUNT VERNON IL	50.7	CP MOD	BMPCDT -20070108AAP
21	WPXS	MOUNT VERNON IL	42.5	PLN	DTVPLN -DTVP0761
21	WPXS	MOUNT VERNON IL	50.7	APP	BMPCDT -20070413AGE
22	WVUT	VINCENNES IN	132.6	CP	BPEDT -20080530AAN
22	WVUT	VINCENNES IN	132.6	PLN	DTVPLN -DTVP0804
22	WVUT	VINCENNES IN	132.6	LIC	BLET -344
22	KBSI	CAPE GIRARDEAU MO	137.6	LIC	BLCDDT -20041213ABC
22	KBSI	CAPE GIRARDEAU MO	137.6	PLN	DTVPLN -DTVP0810
26	KPLR-TV	ST. LOUIS MO	115.2	LIC	BLCDDT -20030812ABY
26	KPLR-TV	ST. LOUIS MO	115.2	PLN	DTVPLN -DTVP0962
29	WMAQ-TV	CHICAGO IL	386.3	LIC	BLCDDT -20010531ACY
29	WMAQ-TV	CHICAGO IL	386.3	PLN	DTVPLN -DTVP1069
29	WTTK	KOKOMO IN	282.4	CP	BPCDDT -20080430ACQ
29	WTTK	KOKOMO IN	282.4	PLN	DTVPLN -DTVP1070
29	WTTK	KOKOMO IN	327.5	LIC	BLCT -19880523KI
29	WXIX-TV	NEWPORT KY	390.3	LIC	BLCDDT -20000908ABI
29	WXIX-TV	NEWPORT KY	390.3	PLN	DTVPLN -DTVP1071
29	WKPD	PADUCAH KY	165.7	LIC	BLET -19950417KH
29	K67GR	ST. LOUIS MO	125.8	APP	BPTTL -20020429ACQ
29	WKNO	MEMPHIS TN	385.8	CP MOD	BMPEDT -20021112ACA
29	WKNO	MEMPHIS TN	385.8	PLN	DTVPLN -DTVP1094
29	WKNO	MEMPHIS TN	385.8	LIC	BLEDT -20060627ABE
30	KDNL-TV	ST. LOUIS MO	115.6	LIC	BLCT -19800312KG
31	KDNL-TV	ST. LOUIS MO	115.6	LIC	BLCDDT -20021216AAE
43	KTVI	ST LOUIS MO	119.5	LIC	BLCDDT -20040903AAY
43	KTVI	ST. LOUIS MO	119.5	PLN	DTVPLN -DTVP1543
44	WRSP-TV	SPRINGFIELD IL	142.7	LIC	BLCDDT -20050317ADQ
44	WRSP-TV	SPRINGFIELD IL	142.7	PLN	DTVPLN -DTVP1573
29	WTTK	KOKOMO IN	282.4	APP	USERRECORD-01

Proposal causes no interference

#####

Analysis of Interference to Affected Station 10

Figure 3

Analysis of current record

Channel	Call	City/State	Application Ref. No.
29	WXIX-TV	NEWPORT KY	BLCDDT -20000908ABI

Stations Potentially Affecting This Station

Chan	Call	City/State	Dist(km)	Status	Application Ref. No.
28	WPTO	OXFORD OH	0.0	LIC	BLEDT -20040714AAQ
28	WPTO	OXFORD OH	0.0	PLN	DTVPLN -DTVP1052
29	WMAQ-TV	CHICAGO IL	402.5	LIC	BLCDDT -20010531ACY
29	WMAQ-TV	CHICAGO IL	402.5	PLN	DTVPLN -DTVP1069
29	WTTK	KOKOMO IN	165.5	PLN	DTVPLN -DTVP1070
29	WGTE-TV	TOLEDO OH	297.2	LIC	BLEDT -20031110AKO
29	WGTE-TV	TOLEDO OH	297.2	PLN	DTVPLN -DTVP1086
30	WRGT-TV	DAYTON OH	71.5	CP	BPCDDT -19991101ADJ
30	WRGT-TV	DAYTON OH	71.5	PLN	DTVPLN -DTVP1117
29	WTTK	KOKOMO IN	165.5	APP	USERRECORD-01

Total scenarios = 4

Result key: 9
 Scenario 1 Affected station 10
 Before Analysis

Results for: 29A KY NEWPORT BLCDDT 20000908ABI LIC

HAAT	290.0 m, ATV ERP	227.0 kW	POPULATION	AREA (sq km)
within Noise Limited Contour			2707073	19543.0
not affected by terrain losses			2698926	19389.6
lost to NTSC IX			0	0.0
lost to additional IX by ATV			332566	1562.3
lost to ATV IX only			332566	1562.3
lost to all IX			332566	1562.3

Potential Interfering Stations Included in above Scenario 1

29A OH TOLEDO	BLEDT	20031110AKO	LIC
30A OH DAYTON	BPCDDT	19991101ADJ	CP
29A IN KOKOMO	DTVPLN	DTVP1070	PLN

After Analysis

Results for: 29A KY NEWPORT BLCDDT 20000908ABI LIC

HAAT	290.0 m, ATV ERP	227.0 kW	POPULATION	AREA (sq km)
within Noise Limited Contour			2707073	19543.0
not affected by terrain losses			2698926	19389.6
lost to NTSC IX			0	0.0
lost to additional IX by ATV			341243	2062.9
lost to ATV IX only			341243	2062.9
lost to all IX			341243	2062.9

Potential Interfering Stations Included in above Scenario 1

Figure 3

29A OH TOLEDO	BLEDT	20031110AKO	LIC
30A OH DAYTON	BPCDDT	19991101ADJ	CP
29A IN KOKOMO	USERRECORD01		APP

Percent new IX = 0.3667%

Result key: 10
 Scenario 2 Affected station 10
 Before Analysis

Results for: 29A KY NEWPORT BLCDDT 20000908ABI LIC

HAAT	290.0 m, ATV ERP	227.0 kW	POPULATION	AREA (sq km)
within Noise Limited Contour			2707073	19543.0
not affected by terrain losses			2698926	19389.6
lost to NTSC IX			0	0.0
lost to additional IX by ATV			332566	1562.3
lost to ATV IX only			332566	1562.3
lost to all IX			332566	1562.3

Potential Interfering Stations Included in above Scenario 2

29A OH TOLEDO	BLEDT	20031110AKO	LIC
30A OH DAYTON	DTVPLN	DTVP1117	PLN
29A IN KOKOMO	DTVPLN	DTVP1070	PLN

After Analysis

Results for: 29A KY NEWPORT BLCDDT 20000908ABI LIC

HAAT	290.0 m, ATV ERP	227.0 kW	POPULATION	AREA (sq km)
within Noise Limited Contour			2707073	19543.0
not affected by terrain losses			2698926	19389.6
lost to NTSC IX			0	0.0
lost to additional IX by ATV			341243	2062.9
lost to ATV IX only			341243	2062.9
lost to all IX			341243	2062.9

Potential Interfering Stations Included in above Scenario 2

29A OH TOLEDO	BLEDT	20031110AKO	LIC
30A OH DAYTON	DTVPLN	DTVP1117	PLN
29A IN KOKOMO	USERRECORD01		APP

Percent new IX = 0.3667%

Result key: 11
 Scenario 3 Affected station 10
 Before Analysis

Results for: 29A KY NEWPORT BLCDDT 20000908ABI LIC

HAAT	290.0 m, ATV ERP	227.0 kW	POPULATION	AREA (sq km)
within Noise Limited Contour			2707073	19543.0
not affected by terrain losses			2698926	19389.6
lost to NTSC IX			0	0.0
lost to additional IX by ATV			332566	1562.3

Figure 3

```
lost to ATV IX only      332566      1562.3
lost to all IX           332566      1562.3

Potential Interfering Stations Included in above Scenario      3

29A OH TOLEDO           DTVPLN      DTVP1086      PLN
30A OH DAYTON           BPCDT      19991101ADJ CP
29A IN KOKOMO           DTVPLN      DTVP1070      PLN

After Analysis

Results for: 29A KY NEWPORT      BLCDDT      20000908ABI LIC
HAAT  290.0 m, ATV ERP  227.0 kW
      POPULATION      AREA (sq km)
within Noise Limited Contour      2707073      19543.0
not affected by terrain losses      2698926      19389.6
lost to NTSC IX                  0      0.0
lost to additional IX by ATV      341243      2062.9
lost to ATV IX only              341243      2062.9
lost to all IX                   341243      2062.9

Potential Interfering Stations Included in above Scenario      3

29A OH TOLEDO           DTVPLN      DTVP1086      PLN
30A OH DAYTON           BPCDT      19991101ADJ CP
29A IN KOKOMO           USERRECORD01 APP

Percent new IX =      0.3667%

Result key:      12
Scenario      4 Affected station      10
Before Analysis

Results for: 29A KY NEWPORT      BLCDDT      20000908ABI LIC
HAAT  290.0 m, ATV ERP  227.0 kW
      POPULATION      AREA (sq km)
within Noise Limited Contour      2707073      19543.0
not affected by terrain losses      2698926      19389.6
lost to NTSC IX                  0      0.0
lost to additional IX by ATV      332566      1562.3
lost to ATV IX only              332566      1562.3
lost to all IX                   332566      1562.3

Potential Interfering Stations Included in above Scenario      4

29A OH TOLEDO           DTVPLN      DTVP1086      PLN
30A OH DAYTON           DTVPLN      DTVP1117      PLN
29A IN KOKOMO           DTVPLN      DTVP1070      PLN

After Analysis

Results for: 29A KY NEWPORT      BLCDDT      20000908ABI LIC
HAAT  290.0 m, ATV ERP  227.0 kW
      POPULATION      AREA (sq km)
within Noise Limited Contour      2707073      19543.0
not affected by terrain losses      2698926      19389.6
lost to NTSC IX                  0      0.0
```

Figure 3

```
lost to additional IX by ATV      341243      2062.9
lost to ATV IX only              341243      2062.9
lost to all IX                   341243      2062.9

Potential Interfering Stations Included in above Scenario      4

29A OH TOLEDO           DTVPLN      DTVP1086      PLN
30A OH DAYTON           DTVPLN      DTVP1117      PLN
29A IN KOKOMO           USERRECORD01 APP

Percent new IX =      0.3667%

Worst case new IX      0.3667% Scenario      1

#####

Analysis of Interference to Affected Station      11

Analysis of current record
Channel      Call      City/State      Application Ref. No.
29      WXIX-TV      NEWPORT KY      DTVPLN      -DTVPL1071

Stations Potentially Affecting This Station

Chan      Call      City/State      Dist(km) Status      Application Ref. No.
28      WPTO      OXFORD OH      0.0      LIC      BLEDT      -20040714AAQ
28      WPTO      OXFORD OH      0.0      PLN      DTVPLN      -DTVPL1052
29      WMAQ-TV      CHICAGO IL      402.5      LIC      BLCDDT      -20010531ACY
29      WMAQ-TV      CHICAGO IL      402.5      PLN      DTVPLN      -DTVPL1069
29      WTTK      KOKOMO IN      165.5      PLN      DTVPLN      -DTVPL1070
29      WGTE-TV      TOLEDO OH      297.2      LIC      BLEDT      -20031110AKO
29      WGTE-TV      TOLEDO OH      297.2      PLN      DTVPLN      -DTVPL1086
30      WRGT-TV      DAYTON OH      71.5      CP      BPCDDT      -19991101ADJ
30      WRGT-TV      DAYTON OH      71.5      PLN      DTVPLN      -DTVPL1117
29      WTTK      KOKOMO IN      165.5      APP      USERRECORD-01

Total scenarios =      4

Result key:      13
Scenario      1 Affected station      11
Before Analysis

Results for: 29A KY NEWPORT      DTVPLN      DTVPL1071      PLN
HAAT  290.0 m, ATV ERP  227.0 kW
      POPULATION      AREA (sq km)
within Noise Limited Contour      2707073      19543.0
not affected by terrain losses      2698926      19389.6
lost to NTSC IX                  0      0.0
lost to additional IX by ATV      332566      1562.3
lost to ATV IX only              332566      1562.3
lost to all IX                   332566      1562.3

Potential Interfering Stations Included in above Scenario      1
```

Figure 3

29A OH TOLEDO BLEDT 20031110AKO LIC
 30A OH DAYTON BPCDT 19991101ADJ CP
 29A IN KOKOMO DTVPLN DTVP1070 PLN

After Analysis

Results for: 29A KY NEWPORT DTVPLN DTVP1071 PLN
 HAAT 290.0 m, ATV ERP 227.0 kW

	POPULATION	AREA (sq km)
within Noise Limited Contour	2707073	19543.0
not affected by terrain losses	2698926	19389.6
lost to NTSC IX	0	0.0
lost to additional IX by ATV	341243	2062.9
lost to ATV IX only	341243	2062.9
lost to all IX	341243	2062.9

Potential Interfering Stations Included in above Scenario 1

29A OH TOLEDO BLEDT 20031110AKO LIC
 30A OH DAYTON BPCDT 19991101ADJ CP
 29A IN KOKOMO USERRECORD01 APP

Percent new IX = 0.3667%

Result key: 14
 Scenario 2 Affected station 11
 Before Analysis

Results for: 29A KY NEWPORT DTVPLN DTVP1071 PLN
 HAAT 290.0 m, ATV ERP 227.0 kW

	POPULATION	AREA (sq km)
within Noise Limited Contour	2707073	19543.0
not affected by terrain losses	2698926	19389.6
lost to NTSC IX	0	0.0
lost to additional IX by ATV	332566	1562.3
lost to ATV IX only	332566	1562.3
lost to all IX	332566	1562.3

Potential Interfering Stations Included in above Scenario 2

29A OH TOLEDO BLEDT 20031110AKO LIC
 30A OH DAYTON DTVPLN DTVP1117 PLN
 29A IN KOKOMO DTVPLN DTVP1070 PLN

After Analysis

Results for: 29A KY NEWPORT DTVPLN DTVP1071 PLN
 HAAT 290.0 m, ATV ERP 227.0 kW

	POPULATION	AREA (sq km)
within Noise Limited Contour	2707073	19543.0
not affected by terrain losses	2698926	19389.6
lost to NTSC IX	0	0.0
lost to additional IX by ATV	341243	2062.9
lost to ATV IX only	341243	2062.9
lost to all IX	341243	2062.9

Potential Interfering Stations Included in above Scenario 2

Figure 3

29A OH TOLEDO BLEDT 20031110AKO LIC
 30A OH DAYTON DTVPLN DTVP1117 PLN
 29A IN KOKOMO USERRECORD01 APP

Percent new IX = 0.3667%

Result key: 15
 Scenario 3 Affected station 11
 Before Analysis

Results for: 29A KY NEWPORT DTVPLN DTVP1071 PLN
 HAAT 290.0 m, ATV ERP 227.0 kW

	POPULATION	AREA (sq km)
within Noise Limited Contour	2707073	19543.0
not affected by terrain losses	2698926	19389.6
lost to NTSC IX	0	0.0
lost to additional IX by ATV	332566	1562.3
lost to ATV IX only	332566	1562.3
lost to all IX	332566	1562.3

Potential Interfering Stations Included in above Scenario 3

29A OH TOLEDO DTVPLN DTVP1086 PLN
 30A OH DAYTON BPCDT 19991101ADJ CP
 29A IN KOKOMO DTVPLN DTVP1070 PLN

After Analysis

Results for: 29A KY NEWPORT DTVPLN DTVP1071 PLN
 HAAT 290.0 m, ATV ERP 227.0 kW

	POPULATION	AREA (sq km)
within Noise Limited Contour	2707073	19543.0
not affected by terrain losses	2698926	19389.6
lost to NTSC IX	0	0.0
lost to additional IX by ATV	341243	2062.9
lost to ATV IX only	341243	2062.9
lost to all IX	341243	2062.9

Potential Interfering Stations Included in above Scenario 3

29A OH TOLEDO DTVPLN DTVP1086 PLN
 30A OH DAYTON BPCDT 19991101ADJ CP
 29A IN KOKOMO USERRECORD01 APP

Percent new IX = 0.3667%

Result key: 16
 Scenario 4 Affected station 11
 Before Analysis

Results for: 29A KY NEWPORT DTVPLN DTVP1071 PLN
 HAAT 290.0 m, ATV ERP 227.0 kW

	POPULATION	AREA (sq km)
within Noise Limited Contour	2707073	19543.0
not affected by terrain losses	2698926	19389.6
lost to NTSC IX	0	0.0

Figure 3

lost to additional IX by ATV 332566 1562.3
lost to ATV IX only 332566 1562.3
lost to all IX 332566 1562.3

Potential Interfering Stations Included in above Scenario 4

29A OH TOLEDO	DTVPLN	DTVP1086	PLN
30A OH DAYTON	DTVPLN	DTVP1117	PLN
29A IN KOKOMO	DTVPLN	DTVP1070	PLN

After Analysis

Results for: 29A KY NEWPORT DTVPLN DTVP1071 PLN
HAAT 290.0 m, ATV ERP 227.0 kW

	POPULATION	AREA (sq km)
within Noise Limited Contour	2707073	19543.0
not affected by terrain losses	2698926	19389.6
lost to NTSC IX	0	0.0
lost to additional IX by ATV	341243	2062.9
lost to ATV IX only	341243	2062.9
lost to all IX	341243	2062.9

Potential Interfering Stations Included in above Scenario 4

29A OH TOLEDO	DTVPLN	DTVP1086	PLN
30A OH DAYTON	DTVPLN	DTVP1117	PLN
29A IN KOKOMO	USERRECORD01		APP

Percent new IX = 0.3667%

Worst case new IX 0.3667% Scenario 1

#####

Analysis of Interference to Affected Station 12

Analysis of current record

Channel	Call	City/State	Application Ref. No.
29	WOMS-CA	MUSKEGON MI	BLTTA -20060926AEA

Stations Potentially Affecting This Station

Chan	Call	City/State	Dist(km)	Status	Application Ref. No.
21	WCMW	MANISTEE MI	91.6	PLN	DTVPLN -DTVP0769
21	WCMW	MANISTEE MI	91.6	CP	BPEDT -20080222ABG
26	WCMU-TV	MOUNT PLEASANT MI	88.5	CP	BPEDT -20080222ABE
26	WCMU-TV	MOUNT PLEASANT MI	88.5	PLN	DTVPLN -DTVP0959
29	960920IP	DUBUQUE IA	389.7	APP	BPET -19960920IP
29	WMAQ-TV	CHICAGO IL	199.9	LIC	BLCDT -20010531ACY
29	WMAQ-TV	CHICAGO IL	199.9	PLN	DTVPLN -DTVP1069
29	WTTK	KOKOMO IN	375.1	CP	BPCDT -20080430ACQ
29	WTTK	KOKOMO IN	375.1	PLN	DTVPLN -DTVP1070
29	WTTK	KOKOMO IN	325.1	LIC	BLCT -19880523KI
29	WUHQ-LP	GRAND RAPIDS MI	46.0	LIC	BLTTL -20030404AAA
29	WGTU	TRAVERSE CITY MI	183.7	LIC	BLCT -20041012AIJ

Figure 3

29	WGTU	TRAVERSE CITY MI	183.7	PLN	DTVPLN	-DTVP1074
29	WGTE-TV	TOLEDO OH	280.8	LIC	BLEDT	-20031110AKO
29	WGTE-TV	TOLEDO OH	280.8	PLN	DTVPLN	-DTVP1086
29	W29DJ	SHEBOYGAN WI	149.3	CP	BPTTL	-20080311ABX
43	WZPX	BATTLE CREEK MI	104.7	LIC	BLCT	-19961017KE
44	WZPX	BATTLE CREEK MI	104.7	LIC	BLCDT	-20020510AAG
44	WZPX	BATTLE CREEK MI	104.7	PLN	DTVPLN	-DTVP1580
29	WTTK	KOKOMO IN	375.1	APP	USERRECORD-01	

Proposed station is beyond the site to nearest cell evaluation distance

#####

Analysis of Interference to Affected Station 13

Analysis of current record

Channel	Call	City/State	Application Ref. No.
29	WOMS-CA	MUSKEGON MI	BDFCDTA -20060330ALZ

Stations Potentially Affecting This Station

Chan	Call	City/State	Dist(km)	Status	Application Ref. No.
28	WSJV	ELKHART IN	183.3	PLN	DTVPLN -DTVP1037
28	WSJV	ELKHART IN	183.3	CP	BPCDT -20080328AAO
28	WFUM	FLINT MI	216.1	CP	BPEDT -20080312ADF
28	WFUM	FLINT MI	216.1	PLN	DTVPLN -DTVP1043
28	WTMJ-TV	MILWAUKEE WI	149.2	LIC	BLCDT -20001218ACR
28	WTMJ-TV	MILWAUKEE WI	149.2	PLN	DTVPLN -DTVP1063
29	WMAQ-TV	CHICAGO IL	199.9	LIC	BLCDT -20010531ACY
29	WMAQ-TV	CHICAGO IL	199.9	PLN	DTVPLN -DTVP1069
29	WTTK	KOKOMO IN	375.1	PLN	DTVPLN -DTVP1070
29	WGTU	TRAVERSE CITY MI	183.7	PLN	DTVPLN -DTVP1074
29	WGTE-TV	TOLEDO OH	280.8	LIC	BLEDT -20031110AKO
29	WGTE-TV	TOLEDO OH	280.8	PLN	DTVPLN -DTVP1086
30	WEYI-TV	SAGINAW MI	190.7	LIC	BLCDT -20040123ASH
30	WEYI-TV	SAGINAW MI	190.7	PLN	DTVPLN -DTVP1111
29	WTTK	KOKOMO IN	375.1	APP	USERRECORD-01

Proposed station is beyond the site to nearest cell evaluation distance

#####

Analysis of Interference to Affected Station 14

Analysis of current record

Channel	Call	City/State	Application Ref. No.
29	WGTE-TV	TOLEDO OH	BLEDT -20031110AKO

Stations Potentially Affecting This Station

Chan	Call	City/State	Dist(km)	Status	Application Ref. No.
------	------	------------	----------	--------	----------------------

Figure 3

Chan	Call	City/State	Dist(km)	Status	Application Ref. No.
28	WFUM	FLINT MI	138.0	CP	BPEDT -20080312ADF
28	WFUM	FLINT MI	138.0	PLN	DTVPLN -DTVP1043
28	WUAB	LORAIN OH	145.8	LIC	BLCDDT -20020516AAG
28	WUAB	LORAIN OH	145.8	PLN	DTVPLN -DTVP1051
29	WMAQ-TV	CHICAGO IL	349.4	LIC	BLCDDT -20010531ACY
29	WMAQ-TV	CHICAGO IL	349.4	PLN	DTVPLN -DTVP1069
29	WTTK	KOKOMO IN	304.9	PLN	DTVPLN -DTVP1070
29	WXIX-TV	NEWPORT KY	297.2	LIC	BLCDDT -20000908ABI
29	WXIX-TV	NEWPORT KY	297.2	PLN	DTVPLN -DTVP1071
29	WGTU	TRAVERSE CITY MI	368.2	PLN	DTVPLN -DTVP1074
30	WEYI-TV	SAGINAW MI	175.0	LIC	BLCDDT -20040123ASH
30	WEYI-TV	SAGINAW MI	175.0	PLN	DTVPLN -DTVP1111
30	WBNX-TV	AKRON OH	147.7	LIC	BLCDDT -20070430AXX
30	WBNX-TV	AKRON OH	147.7	PLN	DTVPLN -DTVP1116
30	WRGT-TV	DAYTON OH	225.7	CP	BPCDDT -19991101ADJ
30	WRGT-TV	DAYTON OH	225.7	PLN	DTVPLN -DTVP1117
29	WTTK	KOKOMO IN	304.9	APP	USERRECORD-01

Proposal causes no interference

#####

Analysis of Interference to Affected Station 15

Analysis of current record

Channel	Call	City/State	Application Ref. No.
29	WGTE-TV	TOLEDO OH	DTVPLN -DTVP1086

Stations Potentially Affecting This Station

Chan	Call	City/State	Dist(km)	Status	Application Ref. No.
28	WFUM	FLINT MI	138.0	CP	BPEDT -20080312ADF
28	WFUM	FLINT MI	138.0	PLN	DTVPLN -DTVP1043
28	WUAB	LORAIN OH	145.8	LIC	BLCDDT -20020516AAG
28	WUAB	LORAIN OH	145.8	PLN	DTVPLN -DTVP1051
29	WMAQ-TV	CHICAGO IL	349.4	LIC	BLCDDT -20010531ACY
29	WMAQ-TV	CHICAGO IL	349.4	PLN	DTVPLN -DTVP1069
29	WTTK	KOKOMO IN	304.9	PLN	DTVPLN -DTVP1070
29	WXIX-TV	NEWPORT KY	297.2	LIC	BLCDDT -20000908ABI
29	WXIX-TV	NEWPORT KY	297.2	PLN	DTVPLN -DTVP1071
29	WGTU	TRAVERSE CITY MI	368.2	PLN	DTVPLN -DTVP1074
30	WEYI-TV	SAGINAW MI	175.0	LIC	BLCDDT -20040123ASH
30	WEYI-TV	SAGINAW MI	175.0	PLN	DTVPLN -DTVP1111
30	WBNX-TV	AKRON OH	147.7	LIC	BLCDDT -20070430AXX
30	WBNX-TV	AKRON OH	147.7	PLN	DTVPLN -DTVP1116
30	WRGT-TV	DAYTON OH	225.8	CP	BPCDDT -19991101ADJ
30	WRGT-TV	DAYTON OH	225.8	PLN	DTVPLN -DTVP1117
29	WTTK	KOKOMO IN	304.9	APP	USERRECORD-01

Proposal causes no interference

#####

Analysis of Interference to Affected Station 16

Figure 3

Analysis of current record

Channel	Call	City/State	Application Ref. No.
30	WRGT-TV	DAYTON OH	BPCDDT -19991101ADJ

Stations Potentially Affecting This Station

Chan	Call	City/State	Dist(km)	Status	Application Ref. No.
29	WTTK	KOKOMO IN	167.2	PLN	DTVPLN -DTVP1070
29	WXIX-TV	NEWPORT KY	71.5	LIC	BLCDDT -20000908ABI
29	WXIX-TV	NEWPORT KY	71.5	PLN	DTVPLN -DTVP1071
29	WGTE-TV	TOLEDO OH	225.7	LIC	BLEDT -20031110AKO
29	WGTE-TV	TOLEDO OH	225.8	PLN	DTVPLN -DTVP1086
30	WKOH	OWENSBORO KY	338.0	LIC	BLEDT -20020304ALJ
30	WKOH	OWENSBORO KY	338.0	PLN	DTVPLN -DTVP1108
30	WEYI-TV	SAGINAW MI	390.7	LIC	BLCDDT -20040123ASH
30	WEYI-TV	SAGINAW MI	390.7	PLN	DTVPLN -DTVP1111
30	WBNX-TV	AKRON OH	284.1	LIC	BLCDDT -20070430AXX
30	WBNX-TV	AKRON OH	284.1	PLN	DTVPLN -DTVP1116
30	WVLT-TV	KNOXVILLE TN	415.3	LIC	BLCDDT -20040420AAF
30	WVLT-TV	KNOXVILLE TN	415.3	PLN	DTVPLN -DTVP1121
31	WANE-TV	FORT WAYNE IN	171.2	CP MOD	BMPDDT -20080313AAW
31	WANE-TV	FORT WAYNE IN	171.2	PLN	DTVPLN -DTVP1143
31	WANE-TV	FORT WAYNE IN	171.2	CP MOD	BMPDDT -20021002ACJ
29	WTTK	KOKOMO IN	167.2	APP	USERRECORD-01

Proposal causes no interference

#####

Analysis of Interference to Affected Station 17

Analysis of current record

Channel	Call	City/State	Application Ref. No.
30	WRGT-TV	DAYTON OH	DTVPLN -DTVP1117

Stations Potentially Affecting This Station

Chan	Call	City/State	Dist(km)	Status	Application Ref. No.
29	WTTK	KOKOMO IN	167.2	PLN	DTVPLN -DTVP1070
29	WXIX-TV	NEWPORT KY	71.5	LIC	BLCDDT -20000908ABI
29	WXIX-TV	NEWPORT KY	71.5	PLN	DTVPLN -DTVP1071
29	WGTE-TV	TOLEDO OH	225.7	LIC	BLEDT -20031110AKO
29	WGTE-TV	TOLEDO OH	225.8	PLN	DTVPLN -DTVP1086
30	WKOH	OWENSBORO KY	338.0	LIC	BLEDT -20020304ALJ
30	WKOH	OWENSBORO KY	338.0	PLN	DTVPLN -DTVP1108
30	WEYI-TV	SAGINAW MI	390.7	LIC	BLCDDT -20040123ASH
30	WEYI-TV	SAGINAW MI	390.7	PLN	DTVPLN -DTVP1111
30	WBNX-TV	AKRON OH	284.1	LIC	BLCDDT -20070430AXX
30	WBNX-TV	AKRON OH	284.1	PLN	DTVPLN -DTVP1116
30	WVLT-TV	KNOXVILLE TN	415.3	LIC	BLCDDT -20040420AAF
30	WVLT-TV	KNOXVILLE TN	415.3	PLN	DTVPLN -DTVP1121
31	WANE-TV	FORT WAYNE IN	171.2	CP MOD	BMPDDT -20080313AAW
31	WANE-TV	FORT WAYNE IN	171.2	PLN	DTVPLN -DTVP1143
31	WANE-TV	FORT WAYNE IN	171.2	CP MOD	BMPDDT -20021002ACJ
29	WTTK	KOKOMO IN	167.2	APP	USERRECORD-01

Proposal causes no interference

Figure 3

#####

Analysis of Interference to Affected Station 18

Analysis of current record

Channel	Call	City/State	Application Ref. No.
31	WKOG-LP	INDIANAPOLIS IN	BLTTA -20050708AAW

Stations Potentially Affecting This Station

Chan	Call	City/State	Dist(km)	Status	Application Ref. No.
23	WIPB	MUNCIE IN	74.7	CP	BPEDT -20080227ABW
23	WIPB	MUNCIE IN	74.7	PLN	DTVPLN -DTVP0847
27	WIPX	BLOOMINGTON IN	40.3	LIC	BLCDT -20040406AAH
27	WIPX	BLOOMINGTON IN	40.3	PLN	DTVPLN -DTVP0999
29	WTTK	KOKOMO IN	14.1	CP	BPCDT -20080430ACQ
29	WTTK	KOKOMO IN	14.1	PLN	DTVPLN -DTVP1070
29	WTTK	KOKOMO IN	65.9	LIC	BLCT -19880523KI
30	WTIU	BLOOMINGTON IN	75.3	LIC	BLET -20020919ABC
31	WFLD	CHICAGO IL	265.6	LIC	BLCDT -20050606ABF
31	WFLD	CHICAGO IL	265.6	PLN	DTVPLN -DTVP1142
31	WMBD-TV	PEORIA IL	302.8	LIC	BLCT -2378
31	WANE-TV	FORT WAYNE IN	169.1	CP MOD	BMPCDT -20080313AAW
31	WANE-TV	FORT WAYNE IN	169.1	PLN	DTVPLN -DTVP1143
31	WANE-TV	FORT WAYNE IN	169.1	CP MOD	BMPCDT -20021002ACJ
31	K58FD	TERRE HAUTE IN	111.8	APP	BPTTL -20020807AAS
31	WKOH	OWENSBORO KY	235.7	LIC	BLCT -19800221IA
31	WPXD	ANN ARBOR MI	338.5	CP	BPCDT -20080305ABI
31	WPXD	ANN ARBOR MI	338.5	PLN	DTVPLN -DTVP1147
31	WPXD	ANN ARBOR MI	338.5	LIC	BLCT -20001005AEE
31	KDNL-TV	ST. LOUIS MO	382.8	LIC	BLCDT -20021216AAE
31	KDNL-TV	ST. LOUIS MO	382.8	PLN	DTVPLN -DTVP1150
32	WNDY-TV	MARION IN	46.4	LIC	BLCDT -20021029AAG
32	WNDY-TV	MARION IN	46.4	PLN	DTVPLN -DTVP1181
39	WKOI-TV	RICHMOND IN	133.3	CP	BPCDT -20080314ABK
39	WKOI-TV	RICHMOND IN	133.3	PLN	DTVPLN -DTVP1404
39	WKOI-TV	RICHMOND IN	133.3	LIC	BLCDT -20050920ABV
39	WFXW	TERRE HAUTE IN	120.8	CP MOD	BMPCDT -20070125ACT
39	WFXW	TERRE HAUTE IN	120.8	PLN	DTVPLN -DTVP1405
45	WXIN	INDIANAPOLIS IN	14.1	LIC	BLCDT -20031003ABM
45	WXIN	INDIANAPOLIS IN	14.1	PLN	DTVPLN -DTVP1613
29	WTTK	KOKOMO IN	14.1	APP	USERRECORD-01

Total scenarios = 3

Result key: 17
Scenario 1 Affected station 18
Before Analysis

Results for: 31N IN INDIANAPOLIS		BLTTA	20050708AAW	LIC
	POPULATION	AREA (sq km)		
within Noise Limited Contour	586052	555.7		
not affected by terrain losses	586052	555.7		

Figure 3

lost to NTSC IX	0	0.0
lost to additional IX by ATV	5675	4.0
lost to all IX	5675	4.0

Potential Interfering Stations Included in above Scenario 1

29A IN KOKOMO DTVPLN DTVP1070 PLN

After Analysis

Results for: 31N IN INDIANAPOLIS		BLTTA	20050708AAW	LIC
	POPULATION	AREA (sq km)		
within Noise Limited Contour	586052	555.7		
not affected by terrain losses	586052	555.7		
lost to NTSC IX	0	0.0		
lost to additional IX by ATV	5675	4.0		
lost to all IX	5675	4.0		

Potential Interfering Stations Included in above Scenario 1

29A IN KOKOMO USERRECORD01 APP

Percent new IX = 0.0000%

Result key: 18
Scenario 2 Affected station 18
Before Analysis

Results for: 31N IN INDIANAPOLIS		BLTTA	20050708AAW	LIC
	POPULATION	AREA (sq km)		
within Noise Limited Contour	586052	555.7		
not affected by terrain losses	586052	555.7		
lost to NTSC IX	20176	12.0		
lost to additional IX by ATV	5675	4.0		
lost to all IX	25851	16.0		

Potential Interfering Stations Included in above Scenario 2

31N IN TERRE HAUTE	BPTTL	20020807AAS	APP
29A IN KOKOMO	DTVPLN	DTVP1070	PLN

After Analysis

Results for: 31N IN INDIANAPOLIS		BLTTA	20050708AAW	LIC
	POPULATION	AREA (sq km)		
within Noise Limited Contour	586052	555.7		
not affected by terrain losses	586052	555.7		
lost to NTSC IX	20176	12.0		
lost to additional IX by ATV	5675	4.0		
lost to all IX	25851	16.0		

Potential Interfering Stations Included in above Scenario 2

31N IN TERRE HAUTE	BPTTL	20020807AAS	APP
29A IN KOKOMO	USERRECORD01		APP

Percent new IX = 0.0000%

Figure 3

Result key: 19
Scenario 3 Affected station 18
Before Analysis

Results for: 31N IN INDIANAPOLIS BLTTA 20050708AAW LIC
POPULATION AREA (sq km)
within Noise Limited Contour 586052 555.7
not affected by terrain losses 586052 555.7
lost to NTSC IX 0 0.0
lost to additional IX by ATV 5675 4.0
lost to all IX 5675 4.0

Potential Interfering Stations Included in above Scenario 3

29A IN KOKOMO DTVPLN DTVP1070 PLN

After Analysis

Results for: 31N IN INDIANAPOLIS BLTTA 20050708AAW LIC
POPULATION AREA (sq km)
within Noise Limited Contour 586052 555.7
not affected by terrain losses 586052 555.7
lost to NTSC IX 0 0.0
lost to additional IX by ATV 5675 4.0
lost to all IX 5675 4.0

Potential Interfering Stations Included in above Scenario 3

29A IN KOKOMO USERRECORD01 APP

Percent new IX = 0.0000%

Worst case new IX 0.0000% Scenario 1

#####

Analysis of Interference to Affected Station 19

Analysis of current record
Channel Call City/State Application Ref. No.
29 WTTK KOKOMO IN USERRECORD-01

Stations Potentially Affecting This Station

Chan	Call	City/State	Dist(km)	Status	Application Ref. No.
28	WSJV	ELKHART IN	192.0	PLN	DTVPLN -DTV1037
28	WSJV	ELKHART IN	192.0	CP	BPCDT -20080328AAO
28	WPTO	OXFORD OH	165.5	LIC	BLEDT -20040714AAQ
28	WPTO	OXFORD OH	165.5	PLN	DTVPLN -DTV1052
29	WMAQ-TV	CHICAGO IL	251.9	LIC	BLCDDT -20010531ACY
29	WMAQ-TV	CHICAGO IL	251.9	PLN	DTVPLN -DTV1069
29	WXIX-TV	NEWPORT KY	165.5	LIC	BLCDDT -20000908ABI
29	WXIX-TV	NEWPORT KY	165.5	PLN	DTVPLN -DTV1071
29	WGTE-TV	TOLEDO OH	304.9	LIC	BLEDT -20031110AKO

Figure 3

29	WGTE-TV	TOLEDO OH	304.9	PLN	DTVPLN	-DTV1086
30	WRGT-TV	DAYTON OH	167.2	CP	BPCDDT	-19991101ADJ
30	WRGT-TV	DAYTON OH	167.2	PLN	DTVPLN	-DTV1117

Total scenarios = 4

Result key: 20
Scenario 1 Affected station 19
Before Analysis

Results for: 29A IN KOKOMO USERRECORD01 APP
HAAT 300.0 m, ATV ERP 780.0 kW
POPULATION AREA (sq km)
within Noise Limited Contour 2530377 26800.3
not affected by terrain losses 2526026 26628.5
lost to NTSC IX 0 0.0
lost to additional IX by ATV 34547 794.9
lost to ATV IX only 34547 794.9
lost to all IX 34547 794.9

Potential Interfering Stations Included in above Scenario 1

29A IL CHICAGO BLCDDT 20010531ACY LIC
29A KY NEWPORT BLCDDT 20000908ABI LIC

Result key: 21
Scenario 2 Affected station 19
Before Analysis

Results for: 29A IN KOKOMO USERRECORD01 APP
HAAT 300.0 m, ATV ERP 780.0 kW
POPULATION AREA (sq km)
within Noise Limited Contour 2530377 26800.3
not affected by terrain losses 2526026 26628.5
lost to NTSC IX 0 0.0
lost to additional IX by ATV 34547 794.9
lost to ATV IX only 34547 794.9
lost to all IX 34547 794.9

Potential Interfering Stations Included in above Scenario 2

29A IL CHICAGO BLCDDT 20010531ACY LIC
29A KY NEWPORT DTVPLN DTVP1071 PLN

Result key: 22
Scenario 3 Affected station 19
Before Analysis

Results for: 29A IN KOKOMO USERRECORD01 APP
HAAT 300.0 m, ATV ERP 780.0 kW
POPULATION AREA (sq km)
within Noise Limited Contour 2530377 26800.3
not affected by terrain losses 2526026 26628.5
lost to NTSC IX 0 0.0
lost to additional IX by ATV 34547 794.9
lost to ATV IX only 34547 794.9

Figure 3

```
lost to all IX          34547      794.9

Potential Interfering Stations Included in above Scenario      3

29A IL CHICAGO          DTVPLN      DTVP1069      PLN
29A KY NEWPORT          BLCDT      20000908ABI  LIC

Result key:             23
Scenario                4  Affected station      19
Before Analysis

Results for: 29A IN KOKOMO      USERRECORD01      APP
  HAAT  300.0 m, ATV ERP  780.0 kW
      POPULATION      AREA (sq km)
  within Noise Limited Contour  2530377      26800.3
  not affected by terrain losses 2526026      26628.5
  lost to NTSC IX              0          0.0
  lost to additional IX by ATV   34547      794.9
  lost to ATV IX only           34547      794.9
  lost to all IX               34547      794.9

Potential Interfering Stations Included in above Scenario      4

29A IL CHICAGO          DTVPLN      DTVP1069      PLN
29A KY NEWPORT          DTVPLN      DTVP1071      PLN

#####

FINISHED FINISHED FINISHED FINISHED FINISHED FINISHED
```

APPENDIX

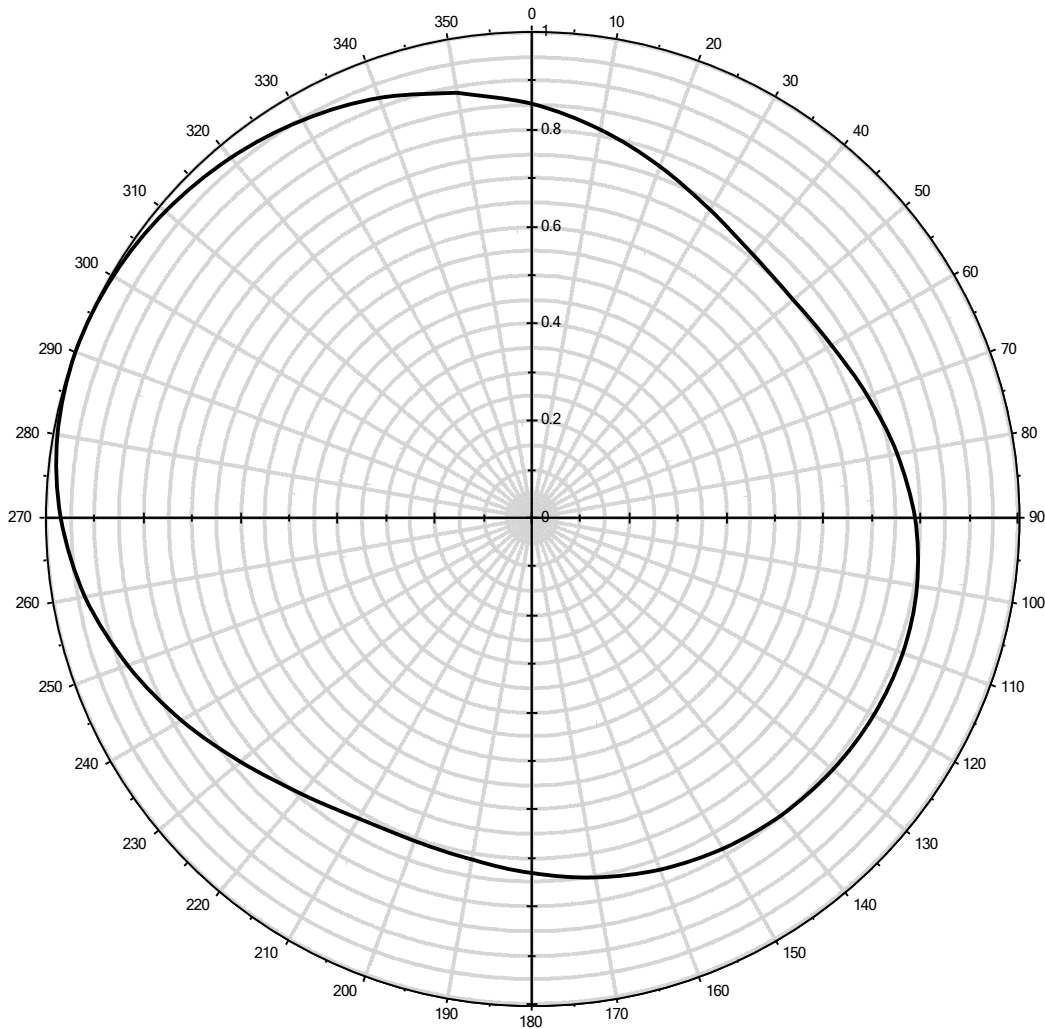
TRANSMITTING ANTENNA
HORIZONTAL PLANE PATTERN

DA Inquiry

du Treil, Lundin, & Rackley, Inc., Sarasota, Florida



Antenna Pattern: Antenna ID: 84705



Note: display reflects rotation of 350.00°

Antenna Details:

0°	0.889	60°	0.701	120°	0.812	180°	0.751	240°	0.781	300°	1.000
10°	0.853	70°	0.712	130°	0.812	190°	0.731	250°	0.833	310°	0.996
20°	0.812	80°	0.735	140°	0.807	200°	0.714	260°	0.886	320°	0.984
30°	0.770	90°	0.763	150°	0.798	210°	0.707	270°	0.934	330°	0.967
40°	0.733	100°	0.788	160°	0.786	220°	0.714	280°	0.970	340°	0.946
50°	0.708	110°	0.805	170°	0.770	230°	0.740	290°	0.992	350°	0.920

Antenna Make: DIE

Standard Pattern:

Antenna Model: THV-7A10-R 4C150

Last Change Date: