

RF MEASUREMENT RF EXPOSURE WTNE-LP/WTNG-LP

**TRANSMITTING SITE
555 OCOEE ST
CLEVELAND TN**

**35-09-46/84-52-26 (NAD 27)
BASE ELEVATION: 879 FT/268 M AMSL
TOP OF ROOF: 908 FT/277 M AMSL
MAST TOTAL 20 FT with 3 FT LIGHTNING ROD**

**WTNE-LP COR AMSL (20 FT ABOVE ROOF) 928 FT/283 M
WTNG-LP COR AMSL (10 FT ABOVE ROOF) 918 FT/280 M**

**BOTH STATIONS RUN AT 100 W ERP H&V
WTNE-LP 107.3 MHZ/WTNG-LP 96.9 MHZ
TO MEASURE ANY POTENTIAL RF HAZARD
WTNG-LP PRESENTLY LICENSED FOR 30 W ERP AT 96.9 MHZ
WITH PLANS TO MOVE TO 97.1 MHZ 100 W ERP H&V**

**METAL ROOF EXCEPT FOR AIR CONDITIONER PLATFORMS
FM MAST IS LOCATED ON ONE AS THOSE STRUCTURES ARE
SUPPORTED BY 2x10 STUDS AND A WOOD/RUBBER TOP.
THE PLATFORMS WERE COVERED WITH GROUNDED
WIRE MESH TO ALLEVIATE ANY POTENTIAL RF HAZARD TO
THE FLOOR BELOW.**

**MEASUREMENT USING:
NARDA NBM-550 ANTENNA BROADBAND FIELD METER
EA-5091 BROADBAND CALIBRATED ANTENNA**

**MEASUREMENT METHOD:
FCC 1997 OCCUPATIONAL
CENTER FREQUENCY SET AT 100 MHZ
MEASURED IN % Mw/cm² (squared)**

MEASUREMENTS RESULTS ARE AS FOLLOWS:

0) WNTE/WTNG OFF

1) WTNE ON/WTNG OFF

2) WTNE ON/WTNG ON

BOTH STATIONS AT 100 W ERP H&V

**REFER TO SECOND STORY FLOORPLANS FOR MEASUREMENT LOCATIONS
OUR STUDIO AREA WAS MEASURED**

LOCATION #1

0) 0.0416

1) 0.1039

2) 0.1045

LOCATION #2

0) 0.0391

1) 0.1007

2) 0.1060

LOCATION #3

0) 0.0570

1) 0.0991

2) 0.1029

LOCATION #4

0) 0.0584

1) 0.0974

2) 0.1073

LOCATION #5

0) 0.0570

1) 0.0955

2) 0.1082

LOCATION #6

0) 0.0555

1) 0.0952

2) 0.1890

LOCATION #7

0) 0.0395

1) 0.1033

2) 0.1037

LOCATION #8

0) 0.0559

1) 0.0951

2) 0.1058

LOCATION #9

0) 0.0551

1) 0.0964

2) 0.1069

LOCATION #10

0) 0.0562

1) 0.0961

2) 0.1070

LOCATION #11

0) 0.0580

1) 0.0981

2) 0.1088

LOCATION #12

0) 0.0491

1) 0.1080

2) 0.1137

LOCATION #13

0) 0.0475

1) 0.1045

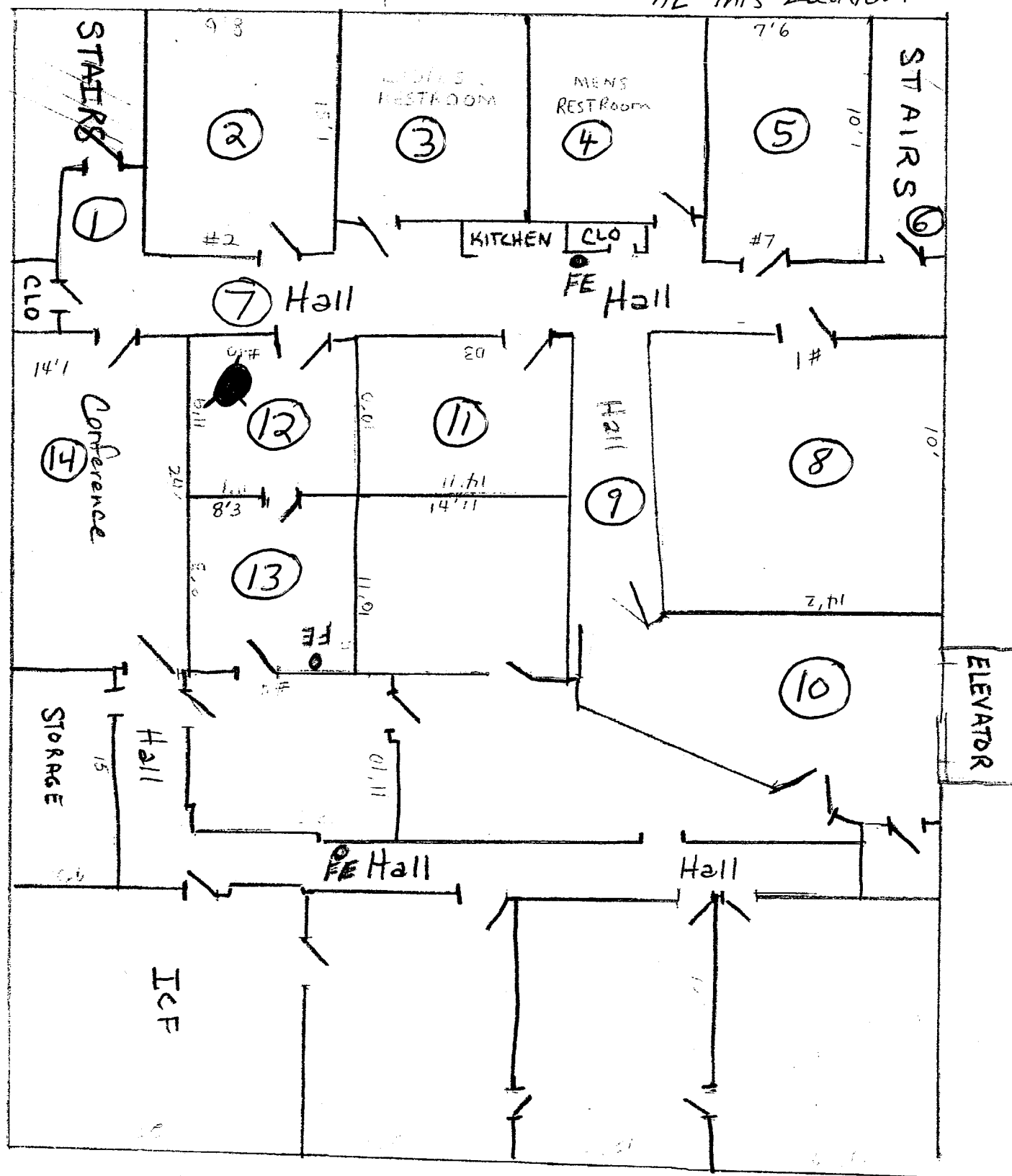
2) 0.1103

LOCATION #14

0) 0.0447

1) 0.1030

2) 0.1054



2nd Floor
555 North Ocoee Street
OFE = Fire Extinguisher