

Channel Study

REFERENCE		CH# 201B1- 88.1 MHz, Pwr= 4.5 kW DA, HAAT= 177.6 M, COR= 619.1 M								DISPLAY DATES	
42 26 13.0 N.		Average Protected F(50-50)= 34.6 km								DATA 09-03-15	
75 30 50.0 W.		Standard Directional								SEARCH 09-15-15	
CH	CALL	TYPE	ANT	AZI.	DIST	LAT.	Pwr(kW)	INT(km)	PRO(km)	*IN*	*OUT*
CITY		STATE		<--	FILE #	LNG.	HAAT(M)	COR(M)	LICENSEE	(Overlap in km)	
201A	WSQN!	LIC	VX	0.0	0.00	42 26 13.0	0.850	79.4	27.8	-111.5	-115.3
Greene			NY	0.0	BLED20130604ADR	75 30 50.0	182	604	Wskg Public Telecommunicat		
06 1C	WRGB	LI	HN	79.8	125.27	42 37 31.0	30.200	49.8	86.8	136.6R	-11.3M
Schenectady			NY	260.9	BMLCDT20110816AAF	74 00 38.0	392	649			
201A	WMTQ	LIC	CX	252.2	117.87	42 06 21.7	0.090	61.6	19.2	19.3	1.6
Elmira			NY	71.3	BLED20110217ABY	76 52 17.1	372	756	Holy Family Communications		
06 1C	WPVI-TV	AP	HN	175.0	266.72	40 02 39.0	62.900	1.7	19.7	264.5R	2.2M
Philadelphia			PA	355.2	BDSTA20120724AED	75 14 26.0	332	404			
06 1C	WPVI-TV	AP	CY	175.0	266.89	40 02 33.0	62.900	1.7	19.7	264.5R	2.4M
Philadelphia			PA	355.2	BPCDT20120604AEC	75 14 33.0	330	395			
06 1C	WPVI-TV	LI	CY	175.0	266.89	40 02 33.0	34.000	1.7	19.7	264.5R	2.4M
Philadelphia			PA	355.2	BLCDT20111019ACJ	75 14 33.0	330	395			
06 1C	WPVI-TV	AP	CY	175.0	266.89	40 02 33.0	62.900	1.7	19.7	264.5R	2.4M
Philadelphia			PA	355.2	BDSTA20120619ABX	75 14 33.0	330	395			
201A	WVVC-FM	LIC	CX	32.1	87.55	43 06 09.0	0.150	62.8	20.3	4.2	3.4
Dolgeville			NY	212.5	BLED20150505AAI	74 56 27.0	206	500	Northeast Gospel Broadcast		
202B	WAER	LIC	DCN	323.0	83.36	43 02 01.0	50.000	45.3	26.5	4.2	6.2
Syracuse			NY	142.6	BLED19950203KA	76 07 53.0	84	282	Syracuse University		
201A	WGWR	CP	DCX	139.4	92.86	41 48 03.9	0.350	53.9	16.6	14.9	4.4
Liberty			NY	319.9	BPED20140303AAG	74 47 04.9	246	737	Sound Of Life, Inc.		
201A	WGWR	LIC	CX	139.4	92.86	41 48 03.9	0.038	31.8	9.5	37.0	11.5
Liberty			NY	319.9	BLED20121113AOG	74 47 04.9	246	737	Sound Of Life, Inc.		
201A	WYSP	LIC	CX	216.5	125.51	41 31 33.0	0.100	27.9	8.4	63.3	24.0
Dushore			PA	35.9	BLED20110511AFH	76 24 35.0	-23	505	Telikoja Educational Broad		
201B1	WKEL	CP	DCX	299.2	147.19	43 04 14.1	15.000	84.7	27.4	27.2	25.2
Webster			NY	118.1	BPED20150310ADH	77 05 34.5	85	242	Educational Media Foundati		
201B1	WKEL	LIC	DEN	299.2	147.26	43 04 18.0	11.000	82.2	27.1	29.7	25.5
Webster			NY	118.2	BLED19880721KC	77 05 35.0	103	255	Educational Media Foundati		
203B	WCII	LIC	DCN	233.0	77.78	42 00 50.0	17.000	5.0	47.1	34.5	27.2
Spencer			NY	52.5	BLED19940523KA	76 15 53.0	180	561	Family Life Ministries, In		
202B1	WLKA	LIC	DCX	177.5	99.31	41 32 37.0	1.100	38.1	25.4	30.9	27.8
Tafton			PA	357.6	BLED20110603ABQ	75 27 44.0	251	690	Educational Media Foundati		
201A	WRGN	LIC	CN	202.0	136.24	41 17 54.0	0.500	50.3	14.6	54.8	32.6
Sweet Valley			PA	21.6	BLED19890518KA	76 07 28.0	92	503	Good News For Life		
204A	WHCL-FM	LIC	CN	7.3	68.78	43 03 04.0	0.270	1.2	7.2	39.6	59.5
Clinton			NY	187.3	BLED19840427CI	75 24 24.0	29	299	Trustees Of Hamilton Colle		
06ZD	WWDG-CD!	AP	D N	1.8	85.36	43 12 18.0	0.600	36.4	3.0	39.4R	46.0M
Rome			NY	181.9	BDISTVA20080528AGR	75 28 48.0	85	206			
204A	WMHY	LIC	DVX	40.4	70.76	42 55 11.0	0.610	1.2	7.8	47.4	61.3
Richfield Springs			NY	220.8	BLED20130215AAK	74 57 02.0	116	505	Mars Hill Broadcasting Co.		
204A	WTMI	LIC	DEX	298.5	85.89	42 48 04.8	0.600	1.0	14.0	49.5	68.6
Fleming			NY	117.9	BLED20120511AAX	76 26 14.2	271	617	Holy Family Communications		
202B1	WVCR-FM	LIC	C	79.3	126.22	42 38 13.0	2.800	41.0	26.9	61.2	63.1
Loudonville			NY	260.3	BLED20010404AAV	74 00 05.0	256	496	Siena College		

201A	WLHV	LIC	DVX	103.8	151.85	42	05	55.0	0.910	52.0	16.0	77.0	66.5
Annandale-on-hudson		NY		285.0	BMLD20121106AAZ	73	43	50.0	116	261	Tri-state Public Communica		
254B	WLZW«	LIC	CX	19.0	83.19	43	08	39.0	25.000	39.5	26.0	16.5R	66.7M
Utica		NY		199.3	BMLH20120913ABT	75	10	45.0	201	450	Townsquare Media Licensee		
201A	WJZZ	LIC	DCX	135.6	148.36	41	28	37.4	1.150	29.0	8.6	95.1	67.7
Montgomery		NY		316.5	BLED20090305ADK	74	16	09.8	35	180	Hudson Valley Public Radio		
06-	CJOHTV6«	GR	DHN	326.8	227.86	44	08	30.0	100.000	71.9	81.7	153.7R	74.2M
Deseronto		ON		145.8		77	04	34.0	205	295			

Terrain database is GLOBE 30 Sec, R= 73.215 qualifying spacings or FCC minimum spacings in KM, M= Margin in KM

Contour distances are on direct line to and from reference station. Reference Zone= - Zone 1, Co to 3rd adjacent.

All separation margins (if shown) include rounding. Call signs with exclamation marks need not be protected.

Ant Column: (D= DA Standard, Z= DA 73.215, N= Not DA 73.215, _= Omni), Polarization (C,H,V,E),

Beamtilt(Y,N,X)

« = Station meets FCC minimum distance spacing for its class.

< = Contour Overlap

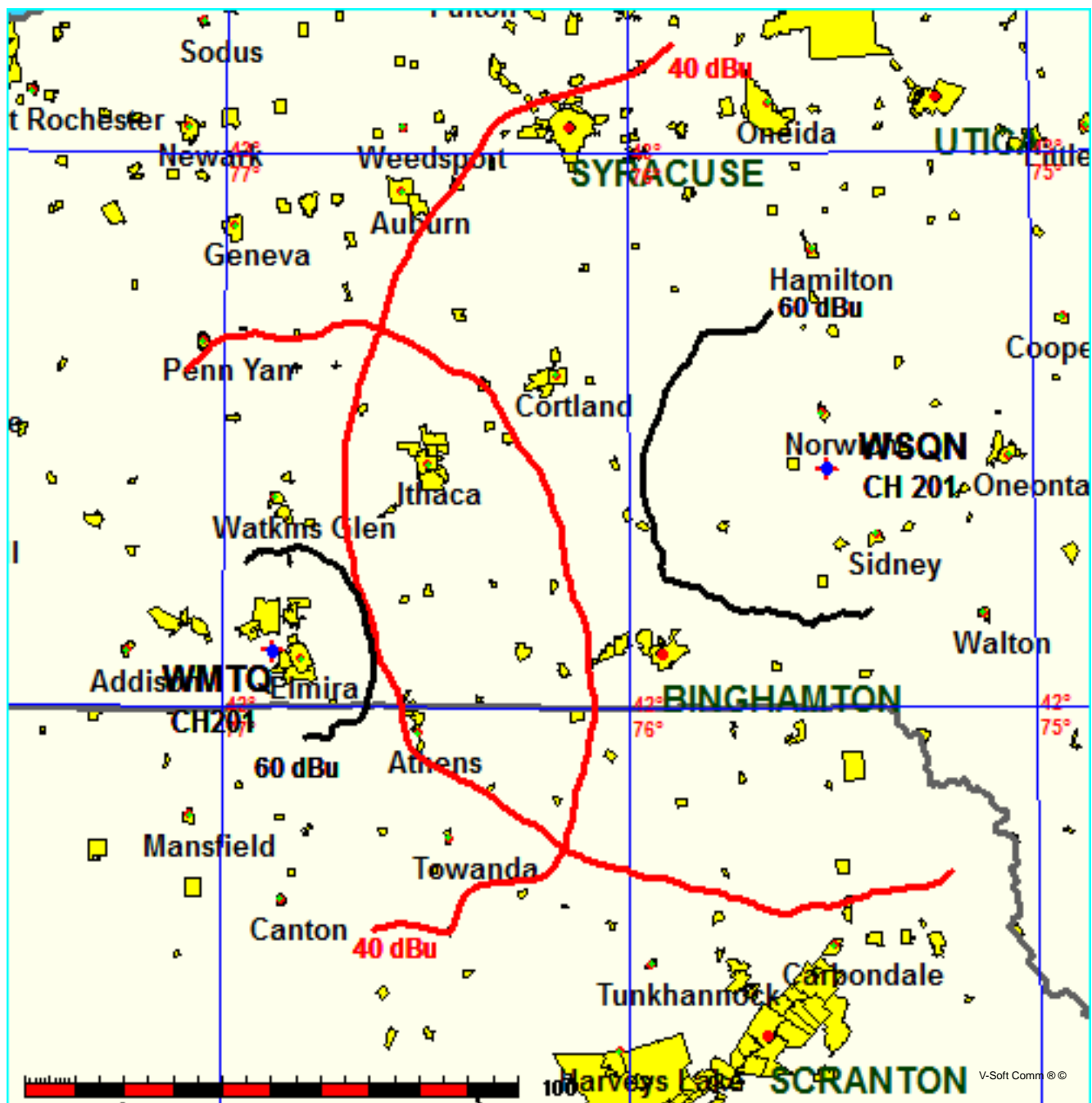
Reference station has protected zone issue: Canada

Wskg Public Telecommunications Council

FMCommander Single Allocation Study - 09-15-2015 - GLOBE 30 Sec
WSQN's Overlaps (In= 19.34 km, Out= 1.62 km)

WSQN CH 201 B1 DA
Lat= 42 26 13.0, Lng= 75 30 50.0
4.5 kW 177.6 M HAAT, 619.1 M COR
Prot.= 60 dBu, Intef.= 40 dBu

WMTQ CH 201 A BLED20110217ABY
Lat= 42 06 21.7, Lng= 76 52 17.1
0.09 kW 372 M HAAT, 756 M COR
Prot.= 60 dBu, Intef.= 40 dBu

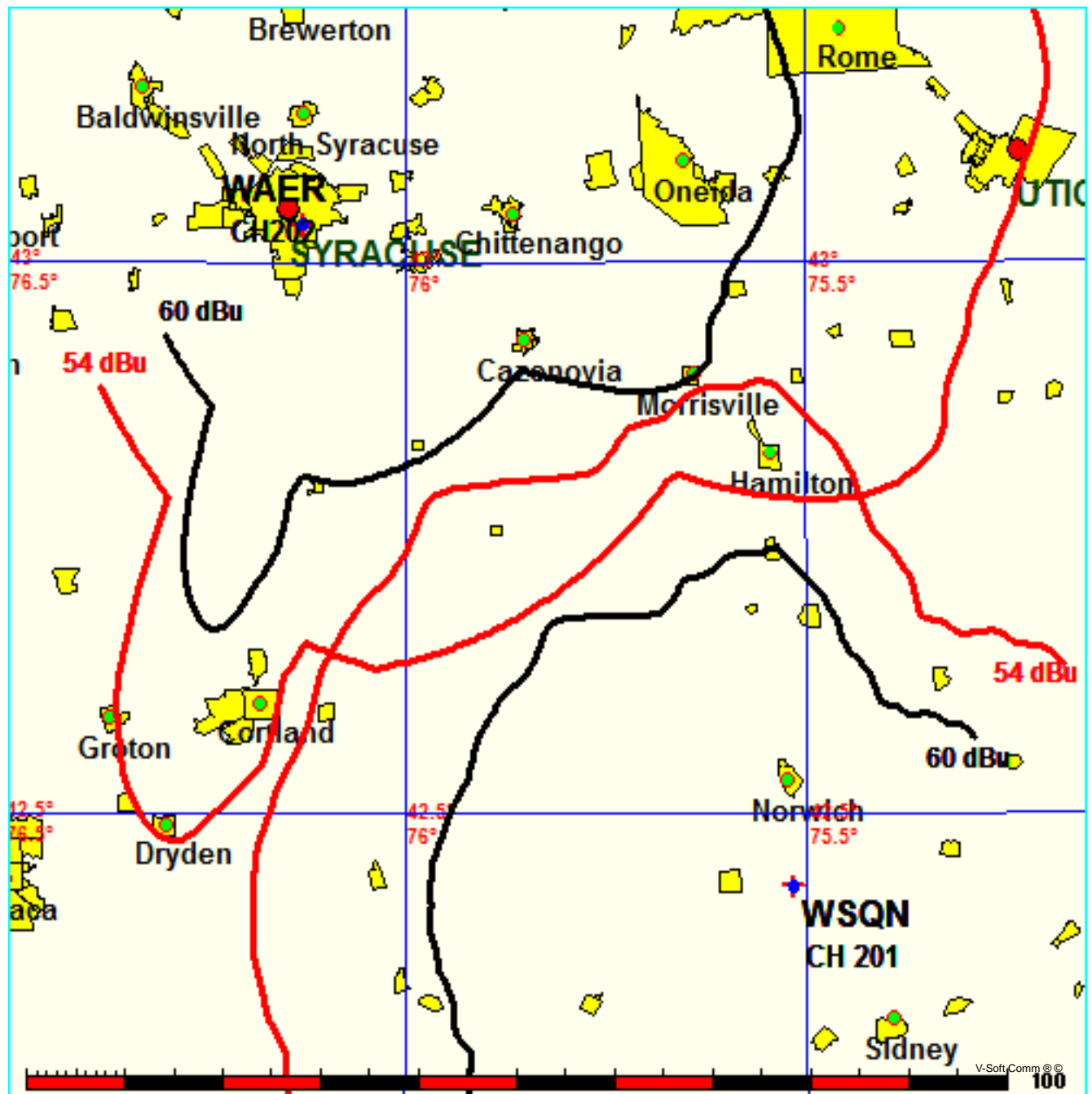


Wskg Public Telecommunications Council

FMCommander Single Allocation Study - 09-15-2015 - GLOBE 30 Sec
WSQN's Overlaps (In= 4.18 km, Out= 6.24 km)

WSQN CH 201 B1 DA
Lat= 42 26 13.0, Lng= 75 30 50.0
4.5 kW 177.6 M HAAT, 619.1 M COR
Prot.= 60 dBu, Intef.= 54 dBu

WAER CH 202 B DA BLED19950203KA
Lat= 43 02 01.0, Lng= 76 07 53.0
50.0 kW 84 M HAAT, 282 M COR
Prot.= 60 dBu, Intef.= 54 dBu

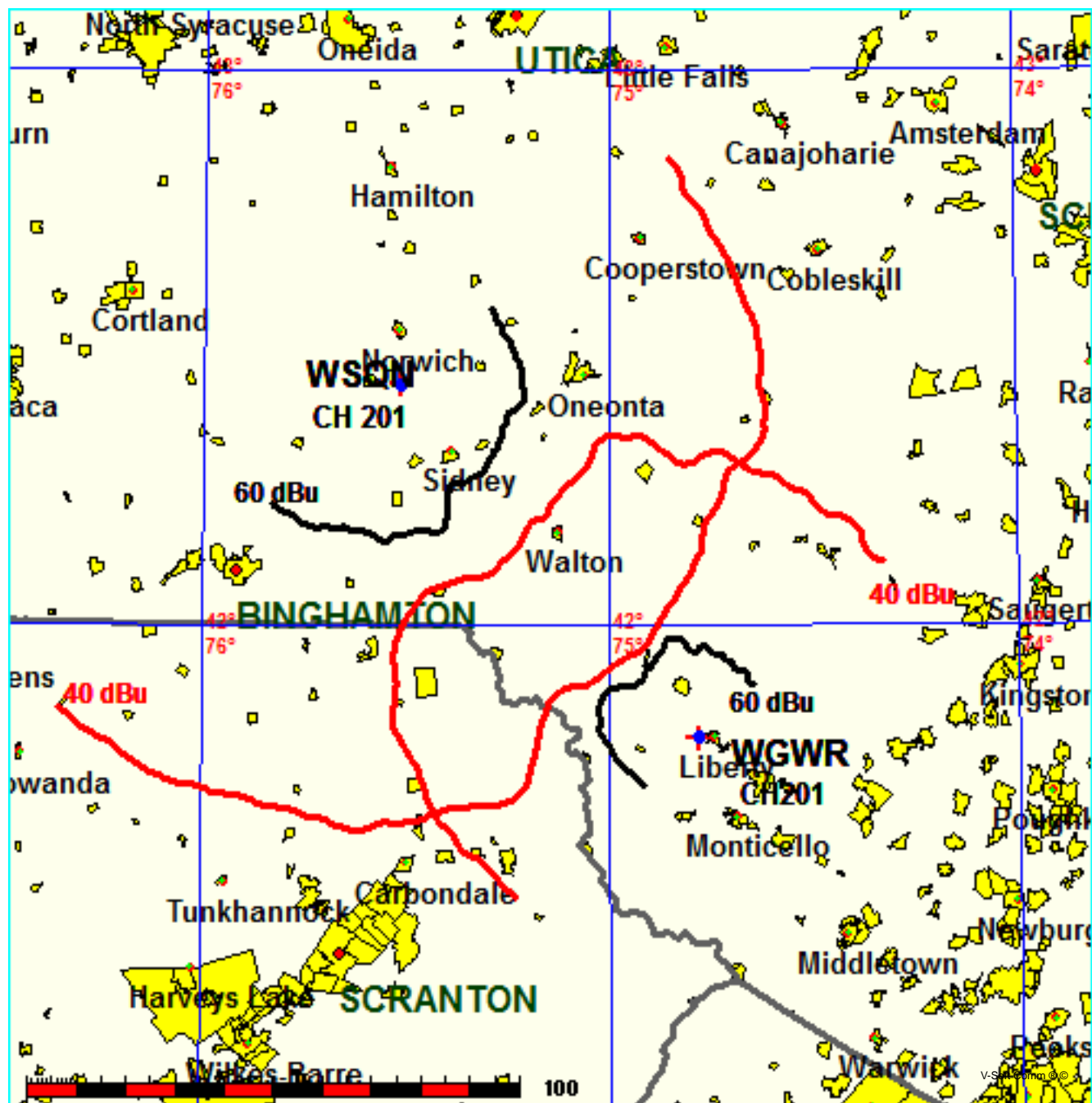


Wskg Public Telecommunications Council

FMCommander Single Allocation Study - 09-15-2015 - GLOBE 30 Sec
WSQN's Overlaps (In= 14.89 km, Out= 4.42 km)

WSQN CH 201 B1 DA
Lat= 42 26 13.0, Lng= 75 30 50.0
4.5 kW 177.6 M HAAT, 619.1 M COR
Prot.= 60 dBu, Intef.= 40 dBu

WGWR-C CH 201 A DA BPED20140303AAG
Lat= 41 48 03.9, Lng= 74 47 04.9
0.35 kW 246 M HAAT, 737 M COR
Prot.= 60 dBu, Intef.= 40 dBu



Wskg Public Telecommunications Council

FMCommander Single Allocation Study - 09-15-2015 - GLOBE 30 Sec
WSQN's Overlaps (In= 36.98 km, Out= 11.53 km)

WSQN CH 201 B1 DA
Lat= 42 26 13.0, Lng= 75 30 50.0
4.5 kW 177.6 M HAAT, 619.1 M COR
Prot.= 60 dBu, Intef.= 40 dBu

WGWR CH 201 A BLED20121113AOG
Lat= 41 48 03.9, Lng= 74 47 04.9
0.038 kW 246 M HAAT, 737 M COR
Prot.= 60 dBu, Intef.= 40 dBu

