

TECHNICAL EXHIBIT
APPLICATION FOR CONSTRUCTION PERMIT
DTV STATION WNEG
TOCCOA, GEORGIA

AUGUST 16, 2010

CH 24 100 KW (MAX-DA) 395 M

TECHNICAL EXHIBIT
APPLICATION FOR CONSTRUCTION PERMIT
DTV STATION WNEG
TOCCOA, GEORGIA
CH 24 100 KW (MAX-DA) 395 M

Table of Contents

	Technical Narrative
Figure 1	Proposed Antenna and Supporting Structure
Figure 2	Map Showing Predicted Coverage Contours
Figure 3	Allocation Study
Appendix	Transmitting Antenna Pattern

TECHNICAL EXHIBIT
APPLICATION FOR CONSTRUCTION PERMIT
DTV STATION WNEG
TOCCOA, GEORGIA
CH 24 100 KW (MAX-DA) 395 M

Technical Narrative

The technical exhibit of which this narrative is part was prepared on behalf of DTV station WNEG on Channel 24 assigned to Toccoa, Georgia. By this instant application, it is proposed to relocate the transmitter site to an existing transmitter site located between the cities of Athens and Gainesville, Georgia, decrease the effective radiated power and increase radiation center of WNEG.

The proposal would not be subject to environmental processing in accordance with Section 1.1306. The proposed facility will be located on an existing tower. Therefore, no new Federal Aviation Administration (FAA) *Determination of No Aeronautical Hazard* is being requested.

Proposed Transmitter Location

The proposed transmitting facility will consist of a directional antenna mounted on a tower located at *Pendergrass, Georgia*. The location is uniquely described by the following geographic coordinates [NAD-27], which were obtained from the Commission's engineering database:

34° 12' 28" North Latitude
83° 37' 48" West Longitude

A sketch showing the proposed antenna and supporting structure is shown on Figure 1.

DTV Frequency Allocation

Implementation of the proposed facility will have a *de minimus* impact on the Commission's DTV assignments and stations. Using the procedures outlined in OET Bulletin No. 69, an interference analysis was completed.¹ As shown in Figure 3, the interference to DTV stations and allotments is considered *de minimis*.

¹ OET Bulletin No. 69, *Longley-Rice Methodology for Evaluating TV Coverage and Interference*, July 2, 1997.

Transmitting Antenna

An ERI C1 Cardioid directional antenna pattern is proposed for this facility with 0.75° of electrical beam tilt. The azimuthal and vertical plane relative field patterns and tabulations are provided within the Appendix.

Coverage Contours

The predicted coverage contour for the proposed operation was calculated in accordance with the provisions of Section 73.313. The average terrain elevations from 3 to 16 kilometers along eight radials evenly spaced at 45 degree intervals, and thirty-two additional radials for contour definition, were obtained from the National Geophysical Data Center's (NGDC) 30-second terrain database. The terrain elevations were then used in combination with the effective radiated power for determining the distances to coverage contours.

Figure 2 is a map showing the predicted coverage contours. As the map illustrates, the FCC predicted City Grade coverage contour entirely encompasses the Toccoa city limits.

Interference Considerations

The WNEG facility does accept full responsibility for the elimination of any objectionable interference, if any occurs, to facilities in existence or authorized prior to grant of this application pursuant to Sections 73.685(d) and (g) of the Commission's Rules.

Radiofrequency Electromagnetic Field Exposure

The proposed facility has been evaluated in terms of potential radiofrequency electromagnetic fields at ground level in accordance with OST Bulletin No. 65, *Evaluating Compliance with FCC Specified Guidelines for Human Exposure to Radiofrequency Electromagnetic Fields*.² The proposed calculated power density at the base of the tower was calculated using the appropriate equation contained on page 30 in Supplement A, *Additional Information for Radio and Television Broadcast Stations*, of the Bulletin.

² OET Bulletin 65, Edition 97-01, August, 1997.

For the calculation, a "worst-case" downward relative field value of 1.0 was assumed for the transmitting antenna. Therefore, using a maximum average effective radiated power of 100 kilowatts and a relative field value of 1.0, the predicted power density at ground level located 351 meters (1150 feet) below the antenna radiation center is 0.02 mW/cm². This is six percent of the Commission's guideline in an uncontrolled environment for a television station.³

It is noted that this statement only addresses the potential for radiofrequency electromagnetic field exposure. All other aspects of the environmental processing analysis will be or already have been provided to the FCC by the tower owner.

Charles A. Cooper

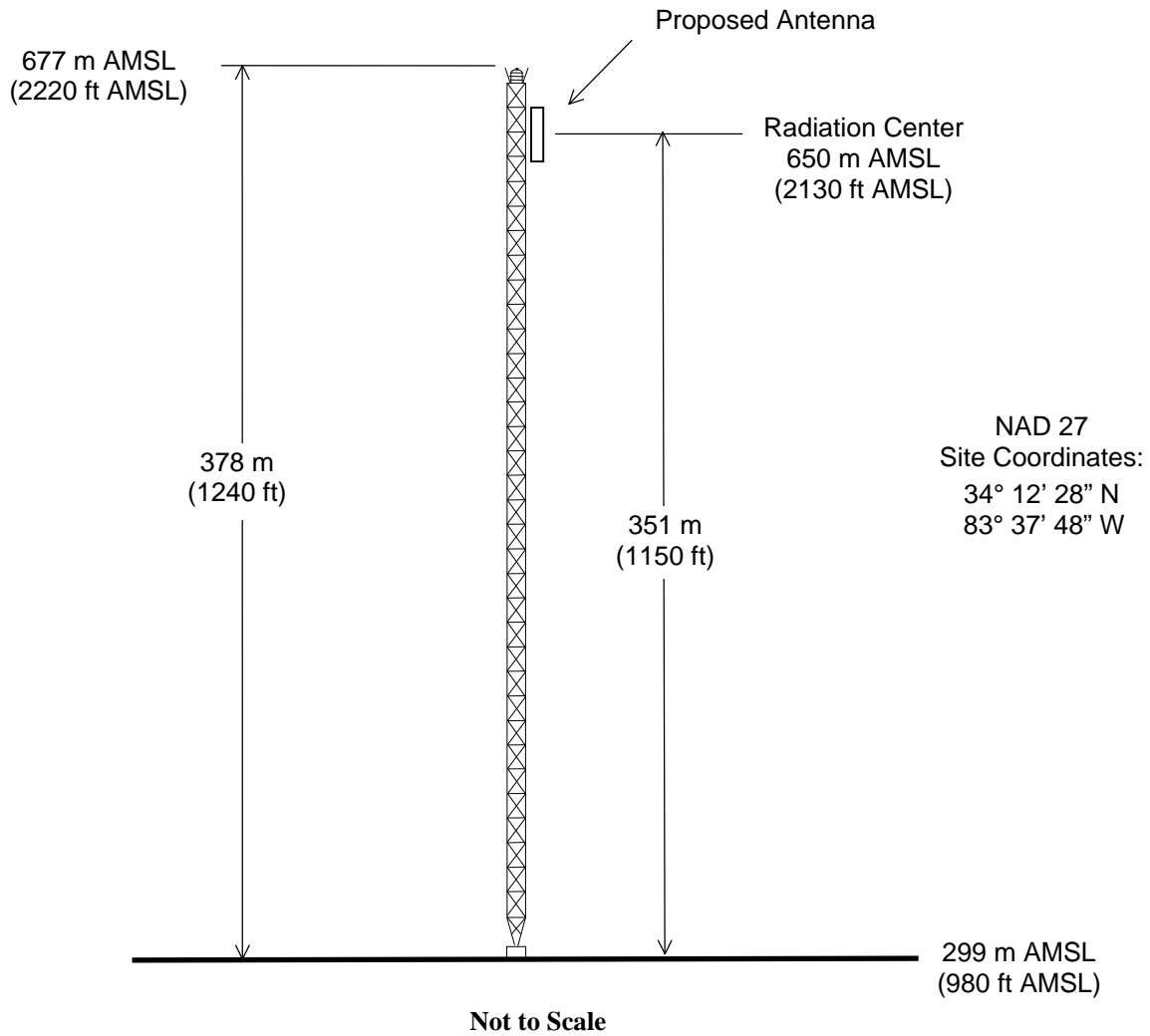
August 16, 2010

du Treil, Lundin & Rackley, Inc.
201 Fletcher Avenue
Sarasota, Florida 34237
941.329.6000

³ The FCC maximum guideline for a UHF broadcast television station on Channel 24 in an uncontrolled environment is 0.36 mW/cm².



ASRN: 1036035



ANTENNA AND SUPPORTING STRUCTURE

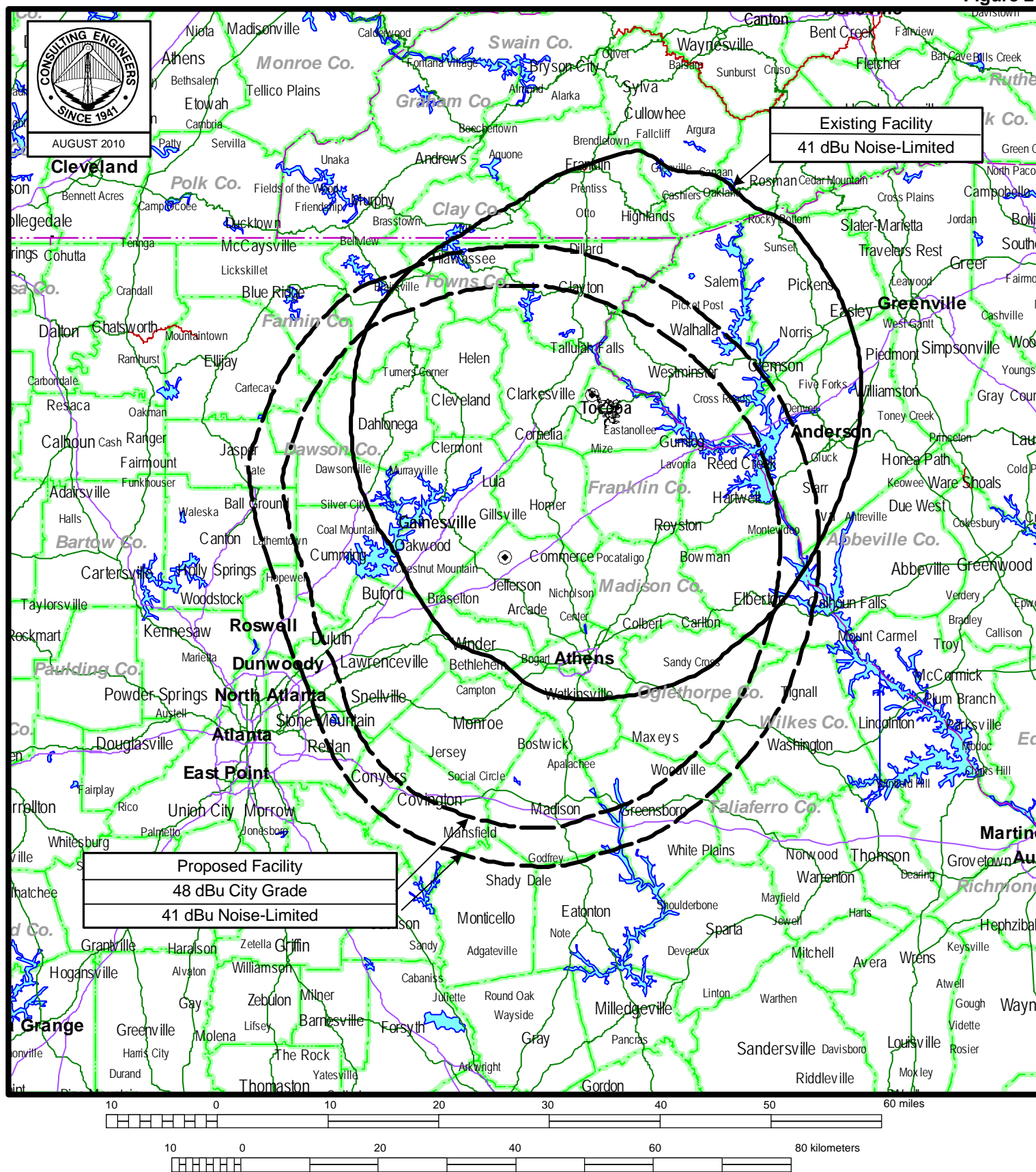
DTV STATION WNEG

TOCCOA, GEORGIA

CH 24 100 KW (MAX-DA) 395 M

du Treil, Lundin & Rackley, Inc. Sarasota, Florida

Figure 2



FCC PREDICTED COVERAGE CONTOURS

DTV STATION WNEG

TOCCOA, GEORGIA

CH 24 100 KW (MAX-DA) 395 M

du Treil, Lundin & Rackley, Inc Sarasota, Florida

TECHNICAL EXHIBIT
APPLICATION FOR CONSTRUCTION PERMIT
DTV STATION WNEG
TOCCOA, GEORGIA
CH 24 100 KW (MAX-DA) 395 M

OET-69 ALLOCATION STUDY

Percent allowed new interference: 0.500
Percent allowed new interference to non Class A LPTV: 2.000
TW Census data selected 2000
Data Base Selected
/export/home/cdb/pt_tvdb.sff

WARNING WARNING WARNING

The following list of station records has been excluded from the analysis due to the fact that they have the same state, city and channel as the proposed station - This could cause the program to not find a potential fail situation

You can force the program to include these records by setting the state of the proposed record to ZZ and re-running the analysis

WNEG-TV 24 TOCCOA GA BLCDT 20090127AAN

TV INTERFERENCE and SPACING ANALYSIS PROGRAM

Date: 08-19-2010 Time: 11:48:03

Record Selected for Analysis

WNEG USERRECORD-01 TOCCOA GA US
Channel 24 ERP 100. kW HAAT 393. m RCAMSL 00650 m
Latitude 034-12-28 Longitude 0083-37-48
Status APP Zone 2 Border Site number: 01
Dir Antenna Make usr Model 00000000006018 Beam tilt N Ref Azimuth 340.
Last update Cutoff date Docket
Comments
Applicant

Cell Size for Service Analysis 2.0 km/side

Distance Increments for Longley-Rice Analysis 1.00 km

Facility (site # 01) meets maximum height/power limits

Site number	1		
Azimuth	ERP	HAAT	41.0 dBu F(50,90)
(Deg)	(kW)	(m)	(km)
0.0	99.800	392.8	86.9
45.0	90.250	411.7	87.3
90.0	93.316	396.0	86.7
135.0	98.307	391.2	86.7
180.0	65.772	412.0	85.2
225.0	8.940	394.2	70.9
270.0	5.198	369.9	66.0
315.0	55.801	379.0	82.0

Evaluation toward Class A Stations from site # 01

No Spacing violations or contour overlap
to Class A stations from site # 01

Class A Evaluation Complete

SPACING VIOLATION FOUND BETWEEN STATION

WNEG 24 TOCCOA GA USERRECORD01 Site # 01

and station

SHORT TO: WNEG-TV 24 TOCCOA GA DTVPLN DTVP0863
34 -36-44 83 -22-05

Req. separation 223.7 Actual separation 50.9 Short 172.8 km

SHORT TO: WATL 25 ATLANTA GA BLCDT 20020716AAH
033-48-26 0084-20-22

Req. separation => 24.0 <= 110.0 Actual separation 79.2 Short 30.8(55.2) km

LANDMOBILE SPACING VIOLATIONS FOUND

NONE from Site # 01

Checks to Site Number 01

Proposed facility OK to FCC Monitoring Stations

Proposed facility OK toward West Virginia quiet zone

Proposed facility OK toward Table Mountain

Proposed facility is beyond the Canadian coordination distance

Proposed facility is beyond the Mexican coordination distance

Proposed station is OK toward AM broadcast stations

Start of Interference Analysis

Channel	Proposed Station Call City/State	ARN
24	WNEG TOCCOA GA	USERRECORD01

Stations Potentially Affected by Proposed Station

Chan	Call	City/State	Dist(km)	Status	Application	Ref. No.
22	WSKC-CA	ATLANTA GA	77.6	LIC	BLTTA	20051013AAE
22	WSKC-CA	ATLANTA GA	77.6	APP	BSTA	20071116ABO
23	WJSP-TV	COLUMBUS GA	180.4	LIC	BLEDT	20080521AAH
23	WPXK-TV	JELLICO TN	201.6	CP	BPCDT	20080620AGZ
23	WPXK-TV	JELLICO TN	227.8	LIC	BLCDT	20020510AAJ
24	WHIQ	HUNTSVILLE AL	272.1	LIC	BLEDT	20060927ALU

Figure 3

24	WJXS-CA	SYLACAUGA AL	216.9	LIC	BLTTL	19970508JF
24	WTLF	TALLAHASSEE FL	419.3	LIC	BLCDT	20030303ABF
24	WTLF	TALLAHASSEE FL	419.3	CP	BPCDT	20040514ACK
24	WPXC-TV	BRUNSWICK GA	415.3	LIC	BLCDT	20060607ABQ
24	WPXC-TV	BRUNSWICK GA	415.3	CP	BPCDT	20080619AFQ
24	WKPI-TV	PIKEVILLE KY	356.3	LIC	BLEDT	20020313ABL
24	WLNN-LP	BOONE NC	285.2	LIC	BLTTL	19970516JB
24	WTAT-TV	CHARLESTON SC	390.6	CP MOD	BMPCDT	20080620ADZ
24	WJDE-LP	NASHVILLE TN	359.3	LIC	BLTTA	20001208AEY
25	WATL	ATLANTA GA	79.1	LIC	BLCDT	20020716AAH
25	WUNF-TV	ASHEVILLE NC	157.1	CP	BPEDT	20080619AEH
25	WUNF-TV	ASHEVILLE NC	157.1	CP MOD	BMPEDT	20090511ANS +
25	WUNF-TV	ASHEVILLE NC	157.1	LIC	BLEDT	20030401BAI
32	WANN-CA	ATLANTA GA	79.1	CP	BPTTA	20091130APP

+ Indicates station is part of a DTS

%%%

Analysis of Interference to Affected Station 1

Analysis of current record

Channel	Call	City/State	Application	Ref. No.
22	WSKC-CA	ATLANTA GA	BLTTA	-20051013AAE

Stations Potentially Affecting This Station

Chan	Call	City/State	Dist(km)	Status	Application	Ref. No.
19	WGCL-TV	ATLANTA GA	30.8	CP	BPCDT	-20040220ACX
19	WGCL-TV	ATLANTA GA	30.8	LIC	BLCDT	-19981211KE
20	WPCH-TV	ATLANTA GA	30.8	LIC	BLCDT	-20050204AAD
21	WPBA	ATLANTA GA	36.0	LIC	BLEDT	-20041013ABK
22	WFIQ	FLORENCE AL	310.7	LIC	BLEDT	-20060718ACG
22	WFIQ	FLORENCE AL	310.7	CP	BPEDT	-20080619AGU
22	WBMM	TUSKEGEE AL	261.9	LIC	BLCDT	-20090428ABH
22	WJCL	SAVANNAH GA	366.3	CP MOD	BMPCDT	-20090918AAU
22	WKSJ-LD	SUMMERVILLE, TRION GA	89.3	APP	BDISDTL	-20091214ABM
22	WCNC-TV	CHARLOTTE NC	332.2	LIC	BLCDT	-20031211ABN
22	WCNC-TV	CHARLOTTE NC	332.2	CP	BPCDT	-20080617AEH
22	WCTE	COOKEVILLE TN	247.7	APP	BMPEDT	-20100813AAA
22	WCTE	COOKEVILLE TN	247.7	CP MOD	BMPEDT	-20090430AAC
22	WCTE	COOKEVILLE TN	247.7	LIC	BLEDT	-20090729ACP
22	WCTD-LP	DUCKTOWN TN	108.0	LIC	BLTTL	-20070622ADD
23	W23DN	ATLANTA GA	30.8	LIC	BLTT	-20070126AFM
23	W23DN	ATLANTA GA	30.8	APP	BSTA	-20060628ACK
23	WGGD-LP	CLEVELAND GA	48.7	APP	BSTA	-20081204AFJ
24	WNEG-TV	TOCCOA GA	116.8	PLN	DTVPLN	-DTVP0863
25	WATL	ATLANTA GA	30.8	LIC	BLCDT	-20020716AAH
24	WNEG	TOCCOA GA	77.6	APP	USERRECORD-01	

Proposed station is beyond the site to
nearest cell evaluation distance

#####

Analysis of Interference to Affected Station 2

Analysis of current record

Channel	Call	City/State	Application	Ref. No.
22	WSKC-CA	ATLANTA GA	BSTA	-20071116ABO

Stations Potentially Affecting This Station

Chan	Call	City/State	Dist(km)	Status	Application	Ref. No.
19	WGCL-TV	ATLANTA GA	30.8	CP	BPCDT	-20040220ACX

Figure 3

19	WGCL-TV	ATLANTA GA	30.8	LIC	BLCDDT	-19981211KE
20	WPCH-TV	ATLANTA GA	30.8	LIC	BLCDDT	-20050204AAD
21	WPBA	ATLANTA GA	36.0	LIC	BLEDT	-20041013ABK
22	WFIQ	FLORENCE AL	310.7	LIC	BLEDT	-20060718ACG
22	WFIQ	FLORENCE AL	310.7	CP	BPEDT	-20080619AGU
22	WBMM	TUSKEGEE AL	261.9	LIC	BLCDDT	-20090428ABH
22	WJCL	SAVANNAH GA	366.3	CP MOD	BMPDDT	-20090918AAU
22	WKSJ-LD	SUMMERVILLE, TRION GA	89.3	APP	BDISDTL	-20091214ABM
22	WCNC-TV	CHARLOTTE NC	332.2	LIC	BLCDDT	-20031211ABN
22	WCNC-TV	CHARLOTTE NC	332.2	CP	BPCDDT	-20080617AEH
22	WCTE	COOKEVILLE TN	247.7	APP	BMPEDT	-20100813AAA
22	WCTE	COOKEVILLE TN	247.7	CP MOD	BMPEDT	-20090430AAC
22	WCTE	COOKEVILLE TN	247.7	LIC	BLEDT	-20090729ACP
22	WCTD-LP	DUCKTOWN TN	108.0	LIC	BLTTL	-20070622ADD
23	W23DN	ATLANTA GA	30.8	LIC	BLTT	-20070126AFM
23	W23DN	ATLANTA GA	30.8	APP	BSTA	-20060628ACK
24	WNEG-TV	TOCCOA GA	116.8	PLN	DTVPLN	-DTVP0863
25	WATL	ATLANTA GA	30.8	LIC	BLCDDT	-20020716AAH
24	WNEG	TOCCOA GA	77.6	APP	USERRECORD-01	

Proposed station is beyond the site to
nearest cell evaluation distance

#####

Analysis of Interference to Affected Station 3

Analysis of current record

Channel	Call	City/State	Application Ref. No.
23	WJSP-TV	COLUMBUS GA	BLEDT -20080521AAH

Stations Potentially Affecting This Station

Chan	Call	City/State	Dist(km)	Status	Application Ref. No.
22	WBMM	TUSKEGEE AL	145.6	LIC	BLCDDT -20090428ABH
23	WDPM-DT	MOBILE AL	370.8	CP MOD	BMPDDT -20081110AAA
23	WBTV	CHARLOTTE NC	427.2	LIC	BLCDDT -19991025AEB
23	WPXK-TV	JELICO TN	357.1	CP	BPCDDT -20080620AGZ
23	WPXK-TV	JELICO TN	374.4	LIC	BLCDDT -20020510AAJ
23	WNAB	NASHVILLE TN	424.8	LIC	BLCDDT -20040712AAO
24	WNEG	TOCCOA GA	180.4	APP	USERRECORD-01

Proposal causes no interference

#####

Analysis of Interference to Affected Station 4

Analysis of current record

Channel	Call	City/State	Application Ref. No.
23	WPXK-TV	JELICO TN	BPCDDT -20080620AGZ

Stations Potentially Affecting This Station

Chan	Call	City/State	Dist(km)	Status	Application Ref. No.
22	WCTE	COOKEVILLE TN	127.2	APP	BMPEDT -20100813AAA
22	WCTE	COOKEVILLE TN	127.2	CP MOD	BMPEDT -20090430AAC
22	WCTE	COOKEVILLE TN	127.2	LIC	BLEDT -20090729ACP
23	WJSP-TV	COLUMBUS GA	357.1	LIC	BLEDT -20080521AAH
23	WBTV	CHARLOTTE NC	258.7	LIC	BLCDDT -19991025AEB
23	WNAB	NASHVILLE TN	257.6	LIC	BLCDDT -20040712AAO
23	WSAZ-TV	HUNTINGTON WV	317.6	LIC	BLCDDT -20090514AAT
24	WNEG-TV	TOCCOA GA	163.2	PLN	DTVPLN -DTVP0863
24	WKPI-TV	PIKEVILLE KY	190.5	LIC	BLEDT -20020313ABL
24	WNEG	TOCCOA GA	201.6	APP	USERRECORD-01

Proposal causes no interference

#####

Analysis of Interference to Affected Station 5

Analysis of current record

Channel	Call	City/State	Application	Ref. No.
23	WPXK-TV	JELLICO TN	BLCDT	-20020510AAJ

Stations Potentially Affecting This Station

Chan	Call	City/State	Dist(km)	Status	Application	Ref. No.
22	WCTE	COOKEVILLE TN	99.9	APP	BMPEDT	-20100813AAA
22	WCTE	COOKEVILLE TN	99.9	CP MOD	BMPEDT	-20090430AAC
22	WCTE	COOKEVILLE TN	99.9	LIC	BLEDT	-20090729ACP
23	WJSP-TV	COLUMBUS GA	374.4	LIC	BLEDT	-20080521AAH
23	WBTV	CHARLOTTE NC	289.7	LIC	BLCDT	-19991025AEB
23	WNAB	NASHVILLE TN	229.9	LIC	BLCDT	-20040712AAO
23	WSAZ-TV	HUNTINGTON WV	312.4	LIC	BLCDT	-20090514AAT
24	WNEG-TV	TOCCOA GA	192.8	PLN	DTVPLN	-DTVP0863
24	WKPI-TV	PIKEVILLE KY	194.1	LIC	BLEDT	-20020313ABL
24	WNEG	TOCCOA GA	227.8	APP	USERRECORD-01	

Proposed station is beyond the site to
nearest cell evaluation distance

#####

Analysis of Interference to Affected Station 6

Analysis of current record

Channel	Call	City/State	Application	Ref. No.
24	WHIQ	HUNTSVILLE AL	BLEDT	-20060927ALU

Stations Potentially Affecting This Station

Chan	Call	City/State	Dist(km)	Status	Application	Ref. No.
23	WNAB	NASHVILLE TN	171.4	LIC	BLCDT	-20040712AAO
24	WNEG-TV	TOCCOA GA	289.3	PLN	DTVPLN	-DTVP0863
24	WMDN	MERIDIAN MS	334.4	LIC	BLCDT	-20090304ADW
25	WATL	ATLANTA GA	226.1	LIC	BLCDT	-20020716AAH
24	WNEG	TOCCOA GA	272.1	APP	USERRECORD-01	

Total scenarios = 1

Result key: 1

Scenario 1 Affected station 6

Before Analysis

Results for: 24A AL HUNTSVILLE BLEDT 20060927ALU LIC

HAAT 338.0 m, ATV ERP 396.0 kW

	POPULATION	AREA (sq km)
within Noise Limited Contour	1139401	28427.7
not affected by terrain losses	1095241	27144.8
lost to NTSC IX	0	0.0
lost to additional IX by ATV	4739	225.2
lost to ATV IX only	4739	225.2
lost to all IX	4739	225.2

Potential Interfering Stations Included in above Scenario 1

24A MS MERIDIAN	BLCDT	20090304ADW	LIC
24A GA TOCCOA	DTVPLN	DTVP0863	PLN

After Analysis

Results for: 24A AL HUNTSVILLE BLEDT 20060927ALU LIC
HAAT 338.0 m, ATV ERP 396.0 kW

	POPULATION	AREA (sq km)
within Noise Limited Contour	1139401	28427.7
not affected by terrain losses	1095241	27144.8
lost to NTSC IX	0	0.0
lost to additional IX by ATV	1319	104.6
lost to ATV IX only	1319	104.6
lost to all IX	1319	104.6

Potential Interfering Stations Included in above Scenario 1

24A MS MERIDIAN BLCDT 20090304ADW LIC
24A GA TOCCOA USERRECORD01 APP

Percent new IX = -0.3136%

Worst case new IX -0.3136% Scenario 1

#####

Analysis of Interference to Affected Station 7

Analysis of current record

Channel	Call	City/State	Application Ref. No.
24	WJXS-CA	SYLACAUGA AL	BLTTL -19970508JF

Stations Potentially Affecting This Station

Chan	Call	City/State	Dist(km)	Status	Application Ref. No.
20	WPCH-TV	ATLANTA GA	143.2	LIC	BLCDT -20050204AAD
21	WPBA	ATLANTA GA	143.0	LIC	BLEDT -20041013ABK
24	WHIQ	HUNTSVILLE AL	137.8	LIC	BLEDT -20060927ALU
24	WTLF	TALLAHASSEE FL	373.7	LIC	BLCDT -20030303ABF
24	WTLF	TALLAHASSEE FL	373.7	CP	BPCDT -20040514ACK
24	WNEG-TV	TOCCOA GA	255.4	PLN	DTVPLN -DTVP0863
24	WMDN	MERIDIAN MS	299.7	LIC	BLCDT -20090304ADW
26	WTJP-TV	GADSDEN AL	57.4	CP	BPCDT -20080616AEF
26	WTJP-TV	GADSDEN AL	57.4	LIC	BLCDT -20050511AAF
27	WAIQ	MONTGOMERY AL	143.3	LIC	BLEDT -20060706ACK
27	WAGA-TV	ATLANTA GA	143.6	LIC	BLCDT -20060728AEL
28	WTOO	HOMESWOOD AL	87.9	CP MOD	BMPEDT -20041104AMB
32	WAAV-TV	HUNTSVILLE AL	137.9	LIC	BLCDT -20050701ABO
39	WBIQ	BIRMINGHAM AL	87.9	CP	BPEDT -20100406AAQ
39	WBIQ-DR	BIRMINGHAM AL	87.9	APP	BPRM -20091215AFU
39	WSB-TV	ATLANTA GA	140.6	LIC	BLCDT -20041020ADC
39	WSB-TV	ATLANTA GA	140.6	CP	BPCDT -20080619ACR
24	WNEG	TOCCOA GA	216.9	APP	USERRECORD-01

Proposal causes no interference

#####

Analysis of Interference to Affected Station 8

Analysis of current record

Channel	Call	City/State	Application Ref. No.
24	WTLF	TALLAHASSEE FL	BLCDT -20030303ABF

Stations Potentially Affecting This Station

Chan	Call	City/State	Dist(km)	Status	Application Ref. No.
24	WWSB	SARASOTA FL	382.8	LIC	BLCDT -20090612AAG
24	WPXC-TV	BRUNSWICK GA	258.6	LIC	BLCDT -20060607ABQ
24	WPXC-TV	BRUNSWICK GA	258.6	CP	BPCDT -20080619AFQ
24	WNEG	TOCCOA GA	419.3	APP	USERRECORD-01

Proposed station is beyond the site to
nearest cell evaluation distance

#####

Analysis of Interference to Affected Station 9

Analysis of current record

Channel	Call	City/State	Application	Ref. No.
24	WTLF	TALLAHASSEE FL	BPCDT	-20040514ACK

Stations Potentially Affecting This Station

Chan	Call	City/State	Dist(km)	Status	Application	Ref. No.
24	WWSB	SARASOTA FL	382.8	LIC	BLCDT	-20090612AAG
24	WPXC-TV	BRUNSWICK GA	258.6	LIC	BLCDT	-20060607ABQ
24	WPXC-TV	BRUNSWICK GA	258.6	CP	BPCDT	-20080619AFQ
24	WNEG	TOCCOA GA	419.3	APP	USERRECORD-01	

Proposed station is beyond the site to
nearest cell evaluation distance

#####

Analysis of Interference to Affected Station 10

Analysis of current record

Channel	Call	City/State	Application	Ref. No.
24	WPXC-TV	BRUNSWICK GA	BLCDT	-20060607ABQ

Stations Potentially Affecting This Station

Chan	Call	City/State	Dist(km)	Status	Application	Ref. No.
24	WWSB	SARASOTA FL	368.6	LIC	BLCDT	-20090612AAG
24	WTLF	TALLAHASSEE FL	258.6	LIC	BLCDT	-20030303ABF
24	WTLF	TALLAHASSEE FL	258.6	CP	BPCDT	-20040514ACK
24	WTAT-TV	CHARLESTON SC	303.9	CP MOD	BMPCDT	-20080620ADZ
24	WNEG	TOCCOA GA	415.3	APP	USERRECORD-01	

Proposal causes no interference

#####

Analysis of Interference to Affected Station 11

Analysis of current record

Channel	Call	City/State	Application	Ref. No.
24	WPXC-TV	BRUNSWICK GA	BPCDT	-20080619AFQ

Stations Potentially Affecting This Station

Chan	Call	City/State	Dist(km)	Status	Application	Ref. No.
24	WWSB	SARASOTA FL	368.6	LIC	BLCDT	-20090612AAG
24	WTLF	TALLAHASSEE FL	258.6	LIC	BLCDT	-20030303ABF
24	WTLF	TALLAHASSEE FL	258.6	CP	BPCDT	-20040514ACK
24	WTAT-TV	CHARLESTON SC	303.9	CP MOD	BMPCDT	-20080620ADZ
24	WNEG	TOCCOA GA	415.3	APP	USERRECORD-01	

Proposal causes no interference

#####

Analysis of Interference to Affected Station 12

Analysis of current record

Channel	Call	City/State	Application	Ref. No.
24	WKPI-TV	PIKEVILLE KY	BLEDT	-20020313ABL

Stations Potentially Affecting This Station

Chan	Call	City/State	Dist(km)	Status	Application	Ref. No.
23	WPXK-TV	JELLICO TN	190.5	CP	BPCDT	-20080620AGZ
23	WPXK-TV	JELLICO TN	194.1	LIC	BLCDT	-20020510AAJ
23	WSAZ-TV	HUNTINGTON WV	138.8	LIC	BLCDT	-20090514AAT
24	WNEG-TV	TOCCOA GA	306.6	PLN	DTVPLN	-DTVP0863
24	WCVN-TV	COVINGTON KY	260.1	LIC	BLEDT	-20020201ABJ
24	WSFJ-TV	NEWARK OH	310.9	LIC	BLCDT	-20060620ABC
24	WDRL-TV	DANVILLE VA	263.4	CP	BPCDT	-20080317AIL
25	WUNF-TV	ASHEVILLE NC	207.7	CP	BPEDT	-20080619AEH
25	WUNF-TV	ASHEVILLE NC	207.7	CP MOD	BMPEDT	-20090511ANS
25	WUNF-TV	ASHEVILLE NC	207.7	LIC	BLEDT	-20030401BAI
25	WUNF-TV	ASHEVILLE NC	213.7	CP MOD	BMPEDT	-20090511ANS
24	WNEG	TOCCOA GA	356.3	APP	USERRECORD-01	

Proposal causes no interference

#####

Analysis of Interference to Affected Station 13

Analysis of current record

Channel	Call	City/State	Application	Ref. No.
24	WLNN-LP	BOONE NC	BLTTL	-19970516JB

Stations Potentially Affecting This Station

Chan	Call	City/State	Dist(km)	Status	Application	Ref. No.
17	WUNE-TV	LINVILLE NC	22.7	CP MOD	BMPEDT	-20080616ABZ
22	WCNC-TV	CHARLOTTE NC	110.0	LIC	BLCDT	-20031211ABN
22	WCNC-TV	CHARLOTTE NC	110.0	CP	BPCDT	-20080617AEH
23	WBTV	CHARLOTTE NC	107.6	LIC	BLCDT	-19991025AEB
24	WNEG-TV	TOCCOA GA	235.0	PLN	DTVPLN	-DTVP0863
24	WKPI-TV	PIKEVILLE KY	137.5	LIC	BLEDT	-20020313ABL
24	WDTT-LP	KNOXVILLE TN	203.8	LIC	BLTTL	-20070731CPA
24	WDTT-LP	LENOIR CITY TN	203.8	APP	BSTA	-20070205AAI
24	WDRL-TV	DANVILLE VA	209.0	CP	BPCDT	-20080317AIL
25	WUNF-TV	ASHEVILLE NC	130.7	CP	BPEDT	-20080619AEH
25	WUNF-TV	ASHEVILLE NC	130.7	CP MOD	BMPEDT	-20090511ANS
25	WUNF-TV	ASHEVILLE NC	130.7	LIC	BLEDT	-20030401BAI
25	W25AY-D	JEFFERSON NC	31.7	LIC	BLDTT	-20100503ABO
27	WUNW	CANTON NC	131.1	CP MOD	BMPEDT	-20080929AHM
27	WCCB	CHARLOTTE NC	138.9	LIC	BLCDT	-20020227AAZ
27	WKPT-TV	KINGSPORT TN	44.3	CP MOD	BMPEDT	-20050303AAJ
31	WXII-TV	WINSTON-SALEM NC	120.4	LIC	BLCDT	-20050627AAU
32	WUNL-TV	WINSTON-SALEM NC	120.6	LIC	BLEDT	-20020717AAH
32	WUNL-TV	WINSTON-SALEM NC	120.6	CP MOD	BMPEDT	-20091026ACL
32	WSBN-TV	NORTON VA	110.0	LIC	BLEDT	-20030428ABR
38	WEMT	GREENEVILLE TN	93.6	LIC	BLCDT	-20050606AHR
38	WEMT	GREENEVILLE TN	43.1	CP	BPCDT	-20090521ADA
39	WMYT-TV	ROCK HILL SC	109.1	CP MOD	BMPEDT	-20080319ADB
24	WNEG	TOCCOA GA	285.2	APP	USERRECORD-01	
25	WUNF-TV	ASHEVILLE NC		CP MOD	BMPEDT	-20090511ANS

Proposal causes no interference

#####

Analysis of Interference to Affected Station 14

Analysis of current record

Channel	Call	City/State	Application	Ref. No.
24	WTAT-TV	CHARLESTON SC	BMPCDT	-20080620ADZ

Figure 3

Stations Potentially Affecting This Station

Chan	Call	City/State	Dist(km)	Status	Application	Ref. No.
24	WPXC-TV	BRUNSWICK GA	303.9	LIC	BLCDT	-20060607ABQ
24	WPXC-TV	BRUNSWICK GA	303.9	CP	BPCDT	-20080619AFQ
24	WNEG-TV	TOCCOA GA	386.8	PLN	DTVPLN	-DTVP0863
24	WNEG	TOCCOA GA	390.6	APP	USERRECORD-01	

Proposal causes no interference

#####

Analysis of Interference to Affected Station 15

Analysis of current record

Channel	Call	City/State	Application	Ref. No.
24	WJDE-LP	NASHVILLE TN	BLTTA	-20001208AEY

Stations Potentially Affecting This Station

Chan	Call	City/State	Dist(km)	Status	Application	Ref. No.
16	WNKY	BOWLING GREEN KY	110.7	LIC	BLCDT	-20071220AAY
20	DWYLE	FLORENCE AL	133.0	APP	BMPEDT	-20070920ABE
21	WUXP-TV	NASHVILLE TN	11.2	LIC	BLCDT	-20060414AAU
22	WCTE	COOKEVILLE TN	128.8	APP	BMPEDT	-20100813AAA
22	WCTE	COOKEVILLE TN	128.8	CP MOD	BMPEDT	-20090430AAC
22	WCTE	COOKEVILLE TN	128.8	LIC	BLEDT	-20090729ACP
23	WNAB	NASHVILLE TN	11.2	LIC	BLCDT	-20040712AAO
24	WHIQ	HUNTSVILLE AL	160.2	LIC	BLEDT	-20060927ALU
24	WNEG-TV	TOCCOA GA	353.9	PLN	DTVPLN	-DTVP0863
24	WCVN-TV	COVINGTON KY	376.3	LIC	BLEDT	-20020201ABJ
24	WQTV-LP	MURRAY KY	145.4	LIC	BLTTL	-20010425AAF
24	WDTT-LP	KNOXVILLE TN	254.3	LIC	BLTTL	-20070731CPA
24	WDTT-LP	LENOIR CITY TN	254.3	APP	BSTA	-20070205AAI
25	WIIW-LD	NASHVILLE TN	0.0	CP MOD	BMPDTL	-20100312ACS
27	WKRN-TV	NASHVILLE TN	13.7	LIC	BLCDT	-20090624ABO
38	WHTN	MURFREESBORO TN	32.5	LIC	BLCDT	-20060627AAY
24	WNEG	TOCCOA GA	359.3	APP	USERRECORD-01	

Proposal causes no interference

#####

Analysis of Interference to Affected Station 16

Analysis of current record

Channel	Call	City/State	Application	Ref. No.
25	WATL	ATLANTA GA	BLCDT	-20020716AAH

Stations Potentially Affecting This Station

Chan	Call	City/State	Dist(km)	Status	Application	Ref. No.
24	WHIQ	HUNTSVILLE AL	226.1	LIC	BLEDT	-20060927ALU
24	WNEG-TV	TOCCOA GA	126.4	PLN	DTVPLN	-DTVP0863
25	WUNF-TV	ASHEVILLE NC	230.9	CP	BPEDT	-20080619AEH
25	WUNF-TV	ASHEVILLE NC	230.9	CP MOD	BMPEDT	-20090511ANS
25	WUNF-TV	ASHEVILLE NC	230.9	LIC	BLEDT	-20030401BAI
25	WUNF-TV	ASHEVILLE NC	207.2	CP MOD	BMPEDT	-20090511ANS
26	WTJP-TV	GADSDEN AL	194.8	CP	BPCDT	-20080616AEF
26	WTJP-TV	GADSDEN AL	194.8	LIC	BLCDT	-20050511AAF
24	WNEG	TOCCOA GA	79.1	APP	USERRECORD-01	

Total scenarios = 3

Result key: 2
Scenario 1 Affected station 16

Figure 3

Before Analysis

Results for: 25A GA ATLANTA BLCDT 20020716AAH LIC
 HAAT 332.0 m, ATV ERP 500.0 kW

	POPULATION	AREA (sq km)
within Noise Limited Contour	4748499	29088.9
not affected by terrain losses	4706550	27992.5
lost to NTSC IX	0	0.0
lost to additional IX by ATV	76113	827.3
lost to ATV IX only	76113	827.3
lost to all IX	76113	827.3

Potential Interfering Stations Included in above Scenario 1

25A NC ASHEVILLE BPEDT 20080619AEH CP
 24A GA TOCCOA DTVPLN DTVP0863 PLN

After Analysis

Results for: 25A GA ATLANTA BLCDT 20020716AAH LIC
 HAAT 332.0 m, ATV ERP 500.0 kW

	POPULATION	AREA (sq km)
within Noise Limited Contour	4748499	29088.9
not affected by terrain losses	4706550	27992.5
lost to NTSC IX	0	0.0
lost to additional IX by ATV	96712	1108.5
lost to ATV IX only	96712	1108.5
lost to all IX	96712	1108.5

Potential Interfering Stations Included in above Scenario 1

25A NC ASHEVILLE BPEDT 20080619AEH CP
 24A GA TOCCOA USERRECORD01 APP

Percent new IX = 0.4449%

Result key: 3
 Scenario 2 Affected station 16
 Before Analysis

Results for: 25A GA ATLANTA BLCDT 20020716AAH LIC
 HAAT 332.0 m, ATV ERP 500.0 kW

	POPULATION	AREA (sq km)
within Noise Limited Contour	4748499	29088.9
not affected by terrain losses	4706550	27992.5
lost to NTSC IX	0	0.0
lost to additional IX by ATV	76881	839.4
lost to ATV IX only	76881	839.4
lost to all IX	76881	839.4

Potential Interfering Stations Included in above Scenario 2

25A NC ASHEVILLE BMPEDT 20090511ANS CP
 24A GA TOCCOA DTVPLN DTVP0863 PLN

After Analysis

Results for: 25A GA ATLANTA BLCDT 20020716AAH LIC
 HAAT 332.0 m, ATV ERP 500.0 kW

	POPULATION	AREA (sq km)
within Noise Limited Contour	4748499	29088.9
not affected by terrain losses	4706550	27992.5
lost to NTSC IX	0	0.0
lost to additional IX by ATV	97672	1124.5
lost to ATV IX only	97672	1124.5
lost to all IX	97672	1124.5

Potential Interfering Stations Included in above Scenario 2

25A NC ASHEVILLE BMPEDT 20090511ANS CP

Figure 3

```

24A GA TOCCOA                USERRECORD01          APP

Percent new IX =      0.4491%

Result key:      4
Scenario        3  Affected station      16
Before Analysis

Results for: 25A GA ATLANTA          BLCDT      20020716AAH  LIC
HAAT 332.0 m, ATV ERP 500.0 kW
      POPULATION  AREA (sq km)
within Noise Limited Contour  4748499  29088.9
not affected by terrain losses 4706550  27992.5
lost to NTSC IX              0         0.0
lost to additional IX by ATV  57687    634.6
lost to ATV IX only          57687    634.6
lost to all IX               57687    634.6

Potential Interfering Stations Included in above Scenario      3

25A NC ASHEVILLE          BLEDT      20030401BAI  LIC
24A GA TOCCOA              DTVPLN     DTVP0863    PLN

After Analysis

Results for: 25A GA ATLANTA          BLCDT      20020716AAH  LIC
HAAT 332.0 m, ATV ERP 500.0 kW
      POPULATION  AREA (sq km)
within Noise Limited Contour  4748499  29088.9
not affected by terrain losses 4706550  27992.5
lost to NTSC IX              0         0.0
lost to additional IX by ATV  79662    935.8
lost to ATV IX only          79662    935.8
lost to all IX               79662    935.8

Potential Interfering Stations Included in above Scenario      3

25A NC ASHEVILLE          BLEDT      20030401BAI  LIC
24A GA TOCCOA              USERRECORD01          APP

Percent new IX =      0.4727%

Worst case new IX      0.4727% Scenario      3

#####

Analysis of Interference to Affected Station 17

Analysis of current record
Channel  Call      City/State      Application Ref. No.
  25      WUNF-TV    ASHEVILLE NC      BPEDT      -20080619AEH

Stations Potentially Affecting This Station

Chan  Call      City/State      Dist(km) Status  Application Ref. No.
  24  WNEG-TV    TOCCOA GA      106.1  PLN    DTVPLN     -DTVP0863
  24  WKPI-TV    PIKEVILLE KY  207.7  LIC    BLEDT      -20020313ABL
  25  WATL       ATLANTA GA      230.9  LIC    BLCDT      -20020716AAH
  25  WUNC-TV    CHAPEL HILL NC  327.9  CP MOD  BMPEDT     -20080617AAK
  26  WATE-TV    KNOXVILLE TN  124.8  LIC    BMLCDT     -20041203AEG
  24  WNEG       TOCCOA GA      157.1  APP    USERRECORD-01

Total scenarios =      1

Result key:      5
Scenario        1  Affected station      17
Before Analysis

```

Figure 3

Results for: 25A NC ASHEVILLE BPEDT 20080619AEH CP

HAAT 816.0 m, ATV ERP 125.0 kW	POPULATION	AREA (sq km)
within Noise Limited Contour	2193133	34290.2
not affected by terrain losses	1825808	25910.5
lost to NTSC IX	0	0.0
lost to additional IX by ATV	59698	1207.5
lost to ATV IX only	59698	1207.5
lost to all IX	59698	1207.5

Potential Interfering Stations Included in above Scenario 1

25A GA ATLANTA	BLCDDT	20020716AAH	LIC
25A NC CHAPEL HILL	BMPEDT	20080617AAK	CP
26A TN KNOXVILLE	BMLCDDT	20041203AEG	LIC
24A GA TOCCOA	DTVPLN	DTVP0863	PLN

After Analysis

Results for: 25A NC ASHEVILLE BPEDT 20080619AEH CP

HAAT 816.0 m, ATV ERP 125.0 kW	POPULATION	AREA (sq km)
within Noise Limited Contour	2193133	34290.2
not affected by terrain losses	1825808	25910.5
lost to NTSC IX	0	0.0
lost to additional IX by ATV	54550	1110.6
lost to ATV IX only	54550	1110.6
lost to all IX	54550	1110.6

Potential Interfering Stations Included in above Scenario 1

25A GA ATLANTA	BLCDDT	20020716AAH	LIC
25A NC CHAPEL HILL	BMPEDT	20080617AAK	CP
26A TN KNOXVILLE	BMLCDDT	20041203AEG	LIC
24A GA TOCCOA	USERRECORD01		APP

Percent new IX = -0.2915%

Worst case new IX -0.2915% Scenario 1

#####

Analysis of Interference to Affected Station 18

Analysis of current record

DTS STATION

Channel	Call	City/State	Application Ref. No.
25	WUNF-TV	ASHEVILLE NC	BMPEDT -20090511ANS

Stations Potentially Affecting This Station

Chan	Call	City/State	Dist(km)	Status	Application Ref. No.
24	WNEG-TV	TOCCOA GA	95.8	PLN	DTVPLN -DTVP0863
25	WATL	ATLANTA GA	207.2	LIC	BLCDDT -20020716AAH
25	WUNC-TV	CHAPEL HILL NC	377.8	CP MOD	BMPEDT -20080617AAK
26	WATE-TV	KNOXVILLE TN	81.3	LIC	BMLCDDT -20041203AEG
24	WNEG	TOCCOA GA	143.4	APP	USERRECORD-01

Total scenarios = 1

Result key: 6

Scenario 1 Affected station 18

Before Analysis

Results for: 25A NC ASHEVILLE BMPEDT 20090511ANS CP

HAAT 816.0 m, ATV ERP 125.0 kW

Figure 3

	POPULATION	AREA (sq km)
within Noise Limited Contour	2187391	34053.3
not affected by terrain losses	1937498	29123.4
lost to NTSC IX	0	0.0
lost to additional IX by ATV	47590	1134.6
lost to ATV IX only	47590	1134.6
lost to all IX	47590	1134.6

Potential Interfering Stations Included in above Scenario 1

25A GA ATLANTA	BLCDDT	20020716AAH	LIC
25A NC CHAPEL HILL	BMPEDT	20080617AAK	CP
26A TN KNOXVILLE	BMLCDDT	20041203AEG	LIC
24A GA TOCCOA	DTVPLN	DTVP0863	PLN

After Analysis

Results for: 25A NC ASHEVILLE BMPEDT 20090511ANS CP
HAAT 816.0 m, ATV ERP 125.0 kW

	POPULATION	AREA (sq km)
within Noise Limited Contour	2187391	34053.3
not affected by terrain losses	1937498	29123.4
lost to NTSC IX	0	0.0
lost to additional IX by ATV	43394	1029.6
lost to ATV IX only	43394	1029.6
lost to all IX	43394	1029.6

Potential Interfering Stations Included in above Scenario 1

25A GA ATLANTA	BLCDDT	20020716AAH	LIC
25A NC CHAPEL HILL	BMPEDT	20080617AAK	CP
26A TN KNOXVILLE	BMLCDDT	20041203AEG	LIC
24A GA TOCCOA	USERRECORD01		APP

Percent new IX = -0.2220%

Worst case new IX -0.2220% Scenario 1

#####

Analysis of Interference to Affected Station 19

Analysis of current record

Channel	Call	City/State	Application Ref. No.
25	WUNF-TV	ASHEVILLE NC	BLEDT -20030401BAI

Stations Potentially Affecting This Station

Chan	Call	City/State	Dist(km)	Status	Application Ref. No.
24	WNEG-TV	TOCCOA GA	106.1	PLN	DTVPLN -DTVP0863
24	WKPI-TV	PIKEVILLE KY	207.7	LIC	BLEDT -20020313ABL
25	WATL	ATLANTA GA	230.9	LIC	BLCDDT -20020716AAH
25	WUNC-TV	CHAPEL HILL NC	327.9	CP MOD	BMPEDT -20080617AAK
26	WATE-TV	KNOXVILLE TN	124.8	LIC	BMLCDDT -20041203AEG
24	WNEG	TOCCOA GA	157.1	APP	USERRECORD-01

Proposal causes no interference

#####

Analysis of Interference to Affected Station 20

Analysis of current record

Channel	Call	City/State	Application Ref. No.
32	WANN-CA	ATLANTA GA	BPTTA -20091130APP

Stations Potentially Affecting This Station

Figure 3

Chan	Call	City/State	Dist(km)	Status	Application	Ref. No.
24	WNEG-TV	TOCCOA GA	126.4	PLN	DTVPLN	-DTVP0863
25	WATL	ATLANTA GA	0.0	LIC	BLCDT	-20020716AAH
31	WSB-TV	ATHENS GA	53.1	LIC	BLCDT	-20100429ADZ
32	WAAY-TV	HUNTSVILLE AL	226.4	LIC	BLCDT	-20050701ABO
32	WNCF	MONTGOMERY AL	290.8	LIC	BLCDT	-20090428ABG
32	WNCF	MONTGOMERY AL	290.8	CP MOD	BMPCDT	-20080619AHK
32	WFSU-TV	TALLAHASSEE FL	384.2	LIC	BLEDT	-20030730ACW
32	W32DT-D	GAINESVILLE GA	117.3	CP	BNPDTL	-20090825AGS
32	WDMA-CA	MACON GA	123.9	LIC	BLTTL	-19970818JA
32	WPGA-TV	PERRY GA	138.1	CP MOD	BMPCDT	-20080619AER
32	WPGA-TV	PERRY GA	137.8	LIC	BLCDT	-20030717AAA
32	WRLK-TV	COLUMBIA SC	315.6	LIC	BLEDT	-20090622ADI
32	WSBN-TV	NORTON VA	377.1	LIC	BLEDT	-20030428ABR
33	WNGH-TV	CHATSWORTH GA	110.5	LIC	BLEDT	-20080509AAN
39	WSB-TV	ATLANTA GA	5.2	LIC	BLCDT	-20041020ADC
39	WSB-TV	ATLANTA GA	5.2	CP	BPCDT	-20080619ACR
40	WMGT-TV	MACON GA	137.6	LIC	BLCDT	-20070112AHJ
24	WNEG	TOCCOA GA	79.1	APP	USERRECORD-01	

Proposed station is beyond the site to
nearest cell evaluation distance

#####

Analysis of Interference to Affected Station 21

Analysis of current record

Channel	Call	City/State	Application Ref. No.
24	WNEG	TOCCOA GA	USERRECORD-01

Stations Potentially Affecting This Station

Chan	Call	City/State	Dist(km)	Status	Application	Ref. No.
23	WJSP-TV	COLUMBUS GA	180.4	LIC	BLEDT	-20080521AAH
23	WPXK-TV	JELICO TN	201.6	CP	BPCDT	-20080620AGZ
23	WPXK-TV	JELICO TN	227.8	LIC	BLCDT	-20020510AAJ
24	WHIQ	HUNTSVILLE AL	272.1	LIC	BLEDT	-20060927ALU
24	WTLF	TALLAHASSEE FL	419.3	LIC	BLCDT	-20030303ABF
24	WTLF	TALLAHASSEE FL	419.3	CP	BPCDT	-20040514ACK
24	WPXC-TV	BRUNSWICK GA	415.3	LIC	BLCDT	-20060607ABQ
24	WPXC-TV	BRUNSWICK GA	415.3	CP	BPCDT	-20080619AFQ
24	WKPI-TV	PIKEVILLE KY	356.3	LIC	BLEDT	-20020313ABL
24	WTAT-TV	CHARLESTON SC	390.6	CP MOD	BMPCDT	-20080620ADZ
25	WATL	ATLANTA GA	79.1	LIC	BLCDT	-20020716AAH
25	WUNF-TV	ASHEVILLE NC	157.1	CP	BPEDT	-20080619AEH
25	WUNF-TV	ASHEVILLE NC	157.1	CP MOD	BMPEDT	-20090511ANS
25	WUNF-TV	ASHEVILLE NC	157.1	LIC	BLEDT	-20030401BAI
25	WUNF-TV	ASHEVILLE NC	143.4	CP MOD	BMPEDT	-20090511ANS

Total scenarios = 3

Result key: 7

Scenario 1 Affected station 21
Before Analysis

Results for: 24A GA TOCCOA USERRECORD01 APP
HAAT 393.0 m, ATV ERP 100.0 kW

	POPULATION	AREA (sq km)
within Noise Limited Contour	1927233	22181.5
not affected by terrain losses	1894157	21146.4
lost to NTSC IX	0	0.0
lost to additional IX by ATV	608792	1223.0
lost to ATV IX only	608792	1223.0
lost to all IX	608792	1223.0

Figure 3

```

Potential Interfering Stations Included in above Scenario      1

24A AL HUNTSVILLE      BLEDT      20060927ALU  LIC
25A GA ATLANTA           BLCDT      20020716AAH  LIC
25A NC ASHEVILLE        BPEDT      20080619AEH  CP

Result key:           8
Scenario              2 Affected station      21
Before Analysis

Results for: 24A GA TOCCOA      USERRECORD01      APP
      HAAT 393.0 m, ATV ERP 100.0 kW
              POPULATION      AREA (sq km)
within Noise Limited Contour      1927233      22181.5
not affected by terrain losses      1894157      21146.4
lost to NTSC IX                    0          0.0
lost to additional IX by ATV      608403      1211.0
lost to ATV IX only               608403      1211.0
lost to all IX                   608403      1211.0

Potential Interfering Stations Included in above Scenario      2

24A AL HUNTSVILLE      BLEDT      20060927ALU  LIC
25A GA ATLANTA           BLCDT      20020716AAH  LIC
25A NC ASHEVILLE        BMPEDT     20090511ANS  CP

Result key:           9
Scenario              3 Affected station      21
Before Analysis

Results for: 24A GA TOCCOA      USERRECORD01      APP
      HAAT 393.0 m, ATV ERP 100.0 kW
              POPULATION      AREA (sq km)
within Noise Limited Contour      1927233      22181.5
not affected by terrain losses      1894157      21146.4
lost to NTSC IX                    0          0.0
lost to additional IX by ATV      607782      1207.0
lost to ATV IX only               607782      1207.0
lost to all IX                   607782      1207.0

Potential Interfering Stations Included in above Scenario      3

24A AL HUNTSVILLE      BLEDT      20060927ALU  LIC
25A GA ATLANTA           BLCDT      20020716AAH  LIC
25A NC ASHEVILLE        BLEDT      20030401BAI  LIC

#####

FINISHED FINISHED FINISHED FINISHED FINISHED FINISHED

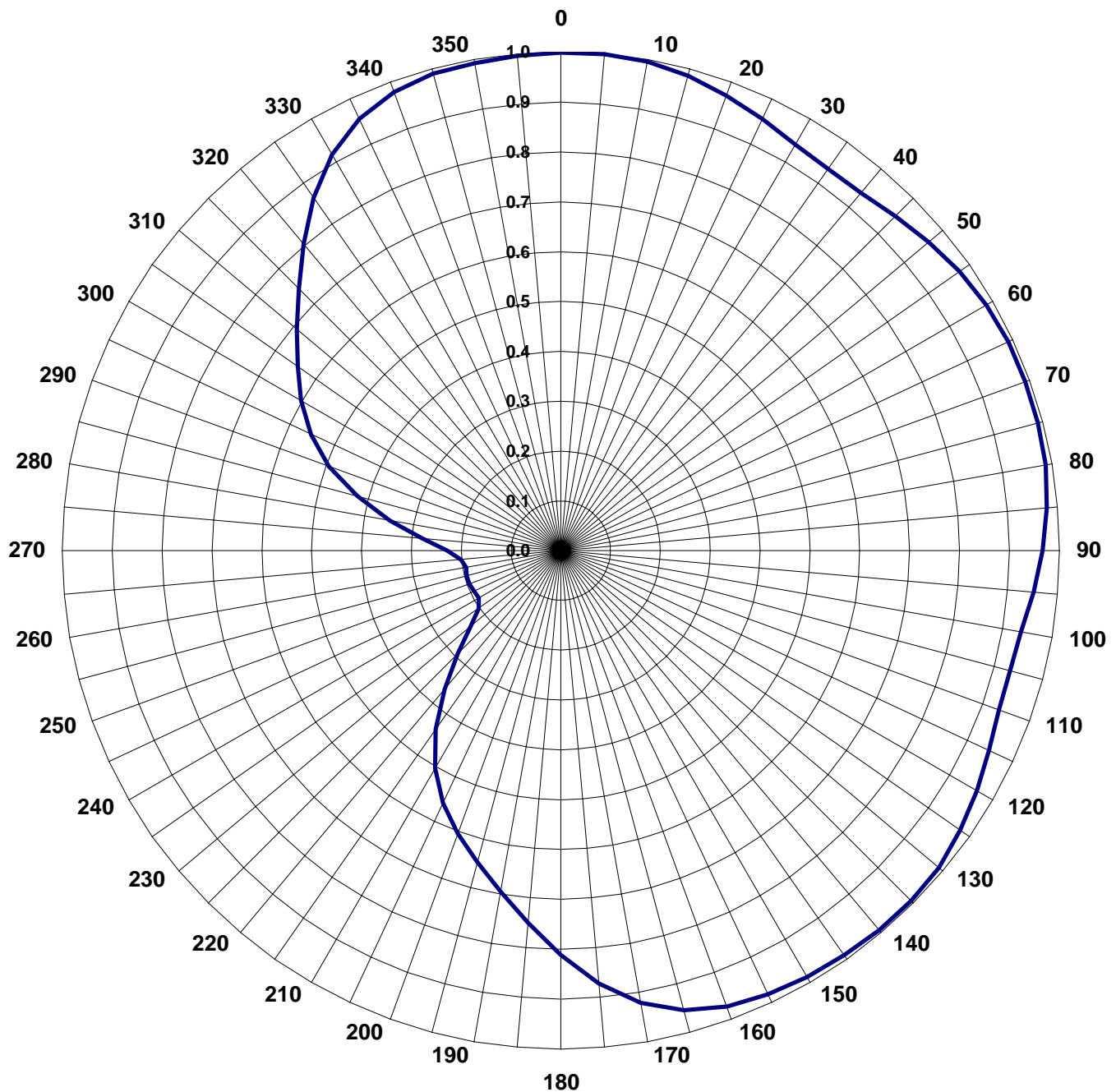
```

APPENDIX

MANUFACTURER PROVIDED ANTENNA HORIZONTAL AND ELEVATION PATTERN DATA

AZIMUTH PATTERN**TYPE:****ATW-C1****Frequency:****24 (DTV)****Numeric****dB****Location:****Toccoa, GA****Directivity:****1.56****1.93****Polarization:****Horizontal****Peak(s) at:**

Note: Pattern shape and directivity may vary with channel and mounting configuration.



TABULATED DATA FOR AZIMUTH PATTERN**TYPE: ATW-C1**

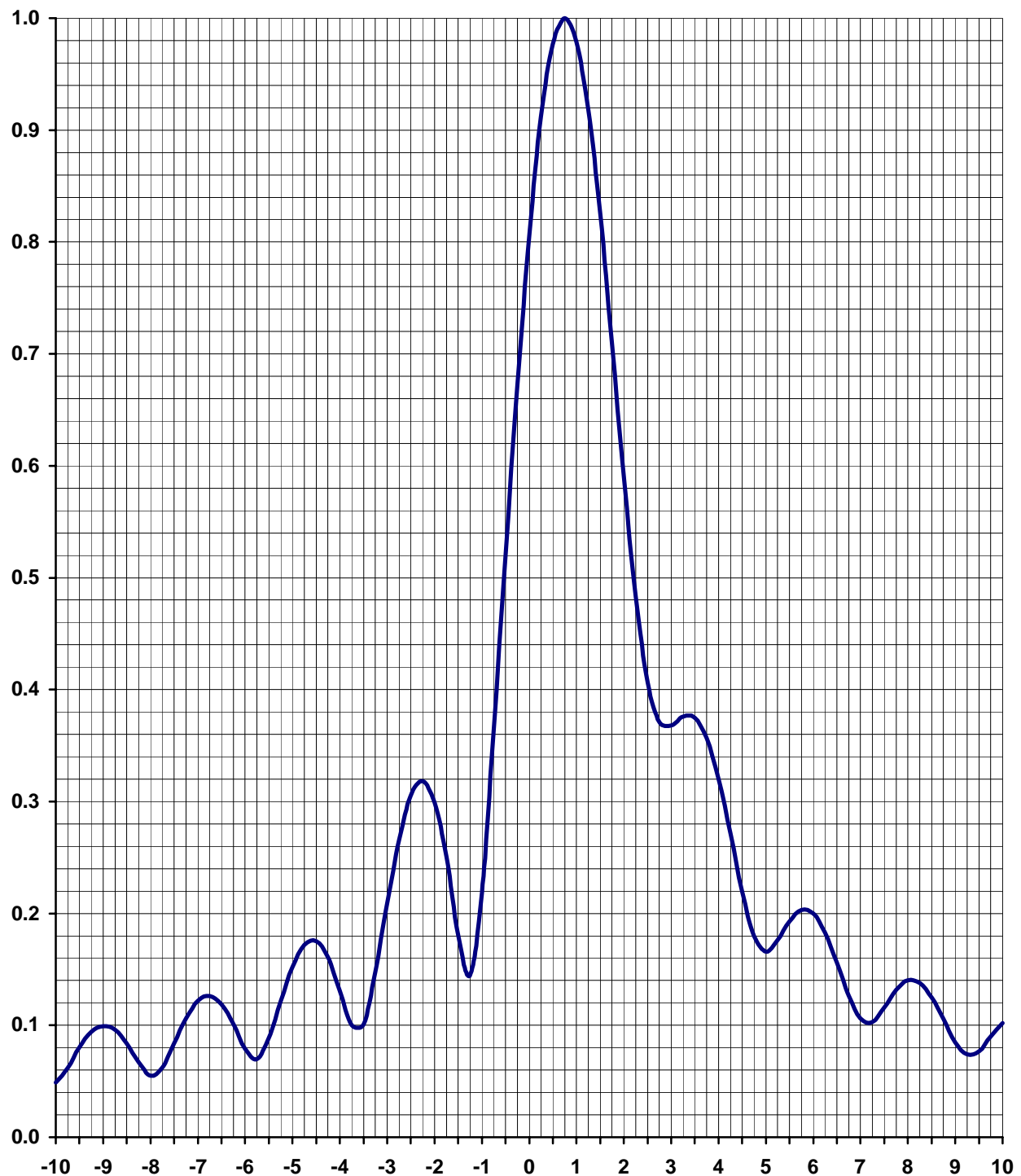
ANGLE	FIELD	dB	ANGLE	FIELD	dB	ANGLE	FIELD	dB	ANGLE	FIELD	dB
0	0.999	-0.01	92	0.960	-0.35	184	0.762	-2.36	276	0.291	-10.72
2	1.000	0.00	94	0.954	-0.41	186	0.738	-2.64	278	0.318	-9.95
4	1.000	0.00	96	0.948	-0.46	188	0.716	-2.90	280	0.348	-9.17
6	1.000	0.00	98	0.943	-0.51	190	0.695	-3.16	282	0.378	-8.45
8	0.998	-0.02	100	0.938	-0.56	192	0.675	-3.41	284	0.408	-7.79
10	0.996	-0.03	102	0.935	-0.58	194	0.656	-3.66	286	0.438	-7.17
12	0.993	-0.06	104	0.933	-0.60	196	0.638	-3.90	288	0.467	-6.61
14	0.989	-0.10	106	0.932	-0.61	198	0.621	-4.14	290	0.495	-6.11
16	0.984	-0.14	108	0.933	-0.60	200	0.604	-4.38	292	0.520	-5.68
18	0.978	-0.19	110	0.935	-0.58	202	0.587	-4.63	294	0.543	-5.30
20	0.972	-0.25	112	0.939	-0.55	204	0.568	-4.91	296	0.564	-4.97
22	0.965	-0.31	114	0.944	-0.50	206	0.549	-5.21	298	0.584	-4.67
24	0.959	-0.36	116	0.950	-0.45	208	0.527	-5.56	300	0.602	-4.41
26	0.952	-0.43	118	0.956	-0.39	210	0.504	-5.95	302	0.620	-4.15
28	0.946	-0.48	120	0.963	-0.33	212	0.479	-6.39	304	0.637	-3.92
30	0.941	-0.53	122	0.969	-0.27	214	0.452	-6.90	306	0.654	-3.69
32	0.938	-0.56	124	0.975	-0.22	216	0.423	-7.47	308	0.672	-3.45
34	0.935	-0.58	126	0.981	-0.17	218	0.393	-8.11	310	0.691	-3.21
36	0.934	-0.59	128	0.985	-0.13	220	0.363	-8.80	312	0.711	-2.96
38	0.935	-0.58	130	0.989	-0.10	222	0.333	-9.55	314	0.732	-2.71
40	0.937	-0.57	132	0.992	-0.07	224	0.305	-10.31	316	0.755	-2.44
42	0.941	-0.53	134	0.994	-0.05	226	0.279	-11.09	318	0.778	-2.18
44	0.945	-0.49	136	0.994	-0.05	228	0.255	-11.87	320	0.803	-1.91
46	0.951	-0.44	138	0.994	-0.05	230	0.235	-12.58	322	0.827	-1.65
48	0.957	-0.38	140	0.994	-0.05	232	0.219	-13.19	324	0.852	-1.39
50	0.963	-0.33	142	0.993	-0.06	234	0.206	-13.72	326	0.875	-1.16
52	0.968	-0.28	144	0.991	-0.08	236	0.198	-14.07	328	0.897	-0.94
54	0.974	-0.23	146	0.990	-0.09	238	0.192	-14.33	330	0.917	-0.75
56	0.978	-0.19	148	0.988	-0.10	240	0.190	-14.42	332	0.935	-0.58
58	0.982	-0.16	150	0.987	-0.11	242	0.190	-14.42	334	0.950	-0.45
60	0.985	-0.13	152	0.985	-0.13	244	0.191	-14.38	336	0.962	-0.34
62	0.988	-0.10	154	0.983	-0.15	246	0.192	-14.33	338	0.972	-0.25
64	0.990	-0.09	156	0.981	-0.17	248	0.194	-14.24	340	0.979	-0.18
66	0.991	-0.08	158	0.978	-0.19	250	0.195	-14.20	342	0.985	-0.13
68	0.991	-0.08	160	0.974	-0.23	252	0.195	-14.20	344	0.988	-0.10
70	0.992	-0.07	162	0.968	-0.28	254	0.195	-14.20	346	0.991	-0.08
72	0.992	-0.07	164	0.960	-0.35	256	0.194	-14.24	348	0.992	-0.07
74	0.991	-0.08	166	0.950	-0.45	258	0.193	-14.29	350	0.993	-0.06
76	0.990	-0.09	168	0.937	-0.57	260	0.193	-14.29	352	0.995	-0.04
78	0.989	-0.10	170	0.921	-0.71	262	0.195	-14.20	354	0.996	-0.03
80	0.987	-0.11	172	0.903	-0.89	264	0.198	-14.07	356	0.997	-0.03
82	0.984	-0.14	174	0.882	-1.09	266	0.205	-13.76	358	0.998	-0.02
84	0.981	-0.17	176	0.860	-1.31	268	0.215	-13.35	360	0.999	-0.01
86	0.976	-0.21	178	0.836	-1.56	270	0.228	-12.84			
88	0.971	-0.26	180	0.811	-1.82	272	0.246	-12.18			
90	0.966	-0.30	182	0.787	-2.08	274	0.267	-11.47			

ELEVATION PATTERN

TYPE: **ATW25H3H**

Directivity:	Numeric	dBd
Main Lobe:	<u>25.00</u>	<u>13.98</u>
Horizontal:	<u>16.28</u>	<u>12.12</u>

Frequency:	<u>24 (DTV)</u>
Location:	<u>Toccoa, GA</u>
Beam Tilt:	<u>0.75</u>
Polarization:	<u>Horizontal</u>



TABULATED DATA FOR ELEVATION PATTERN**ATW25H3H****-5 to 10 degrees in 0.25 increments****10 to 90 degrees in 0.50 increments**

ANGLE	FIELD	dB	ANGLE	FIELD	dB	ANGLE	FIELD	dB	ANGLE	FIELD	dB	ANGLE	FIELD	dB
-10.00	0.049	-26.20	2.00	0.591	-4.57	18.00	0.037	-28.64	42.00	0.038	-28.40	66.00	0.016	-35.92
-9.75	0.062	-24.15	2.25	0.483	-6.32	18.50	0.041	-27.74	42.50	0.034	-29.37	66.50	0.022	-33.15
-9.50	0.080	-21.94	2.50	0.406	-7.83	19.00	0.056	-25.04	43.00	0.024	-32.40	67.00	0.031	-30.17
-9.25	0.094	-20.54	2.75	0.371	-8.61	19.50	0.056	-25.04	43.50	0.019	-34.42	67.50	0.040	-27.96
-9.00	0.099	-20.09	3.00	0.368	-8.68	20.00	0.042	-27.54	44.00	0.027	-31.37	68.00	0.046	-26.74
-8.75	0.096	-20.35	3.25	0.376	-8.50	20.50	0.031	-30.17	44.50	0.035	-29.12	68.50	0.050	-26.02
-8.50	0.084	-21.51	3.50	0.375	-8.52	21.00	0.043	-27.33	45.00	0.038	-28.40	69.00	0.050	-26.02
-8.25	0.067	-23.48	3.75	0.357	-8.95	21.50	0.053	-25.51	45.50	0.033	-29.63	69.50	0.047	-26.56
-8.00	0.055	-25.19	4.00	0.320	-9.90	22.00	0.047	-26.56	46.00	0.024	-32.40	70.00	0.042	-27.54
-7.75	0.062	-24.15	4.25	0.271	-11.34	22.50	0.032	-29.90	46.50	0.019	-34.42	70.50	0.034	-29.37
-7.50	0.084	-21.51	4.50	0.220	-13.15	23.00	0.032	-29.90	47.00	0.025	-32.04	71.00	0.025	-32.04
-7.25	0.106	-19.49	4.75	0.180	-14.89	23.50	0.045	-26.94	47.50	0.034	-29.37	71.50	0.016	-35.92
-7.00	0.122	-18.27	5.00	0.166	-15.60	24.00	0.049	-26.20	48.00	0.038	-28.40	72.00	0.010	-40.00
-6.75	0.126	-17.99	5.25	0.176	-15.09	24.50	0.040	-27.96	48.50	0.036	-28.87	72.50	0.015	-36.48
-6.50	0.119	-18.49	5.50	0.193	-14.29	25.00	0.027	-31.37	49.00	0.028	-31.06	73.00	0.024	-32.40
-6.25	0.101	-19.91	5.75	0.203	-13.85	25.50	0.032	-29.90	49.50	0.020	-33.98	73.50	0.033	-29.63
-6.00	0.079	-22.05	6.00	0.200	-13.98	26.00	0.044	-27.13	50.00	0.021	-33.56	74.00	0.041	-27.74
-5.75	0.070	-23.10	6.25	0.183	-14.75	26.50	0.045	-26.94	50.50	0.030	-30.46	74.50	0.048	-26.38
-5.50	0.089	-21.01	6.50	0.156	-16.14	27.00	0.034	-29.37	51.00	0.037	-28.64	75.00	0.053	-25.51
-5.25	0.122	-18.27	6.75	0.126	-17.99	27.50	0.024	-32.40	51.50	0.039	-28.18	75.50	0.056	-25.04
-5.00	0.152	-16.36	7.00	0.106	-19.49	28.00	0.032	-29.90	52.00	0.035	-29.12	76.00	0.057	-24.88
-4.75	0.172	-15.29	7.25	0.103	-19.74	28.50	0.042	-27.54	52.50	0.026	-31.70	76.50	0.057	-24.88
-4.50	0.175	-15.14	7.50	0.116	-18.71	29.00	0.042	-27.54	53.00	0.019	-34.42	77.00	0.056	-25.04
-4.25	0.161	-15.86	7.75	0.132	-17.59	29.50	0.031	-30.17	53.50	0.022	-33.15	77.50	0.053	-25.51
-4.00	0.131	-17.65	8.00	0.140	-17.08	30.00	0.024	-32.40	54.00	0.031	-30.17	78.00	0.050	-26.02
-3.75	0.100	-20.00	8.25	0.138	-17.20	30.50	0.032	-29.90	54.50	0.038	-28.40	78.50	0.045	-26.94
-3.50	0.101	-19.91	8.50	0.125	-18.06	31.00	0.041	-27.74	55.00	0.041	-27.74	79.00	0.040	-27.96
-3.25	0.147	-16.65	8.75	0.106	-19.49	31.50	0.040	-27.96	55.50	0.038	-28.40	79.50	0.035	-29.12
-3.00	0.209	-13.60	9.00	0.085	-21.41	32.00	0.030	-30.46	56.00	0.030	-30.46	80.00	0.029	-30.75
-2.75	0.266	-11.50	9.25	0.074	-22.62	32.50	0.022	-33.15	56.50	0.022	-33.15	80.50	0.024	-32.40
-2.50	0.305	-10.31	9.50	0.077	-22.27	33.00	0.030	-30.46	57.00	0.019	-34.42	81.00	0.019	-34.42
-2.25	0.318	-9.95	9.75	0.090	-20.92	33.50	0.039	-28.18	57.50	0.025	-32.04	81.50	0.014	-37.08
-2.00	0.299	-10.49	10.00	0.102	-19.83	34.00	0.040	-27.96	58.00	0.034	-29.37	82.00	0.009	-40.92
-1.75	0.250	-12.04	10.50	0.105	-19.58	34.50	0.030	-30.46	58.50	0.041	-27.74	82.50	0.005	-46.02
-1.50	0.181	-14.85	11.00	0.078	-22.16	35.00	0.021	-33.56	59.00	0.042	-27.54	83.00	0.001	-60.00
-1.25	0.145	-16.77	11.50	0.057	-24.88	35.50	0.026	-31.70	59.50	0.039	-28.18	83.50	0.002	-53.98
-1.00	0.219	-13.19	12.00	0.074	-22.62	36.00	0.036	-28.87	60.00	0.032	-29.90	84.00	0.004	-47.96
-0.75	0.361	-8.85	12.50	0.088	-21.11	36.50	0.039	-28.18	60.50	0.024	-32.40	84.50	0.006	-44.44
-0.50	0.519	-5.70	13.00	0.076	-22.38	37.00	0.033	-29.63	61.00	0.018	-34.89	85.00	0.007	-43.10
-0.25	0.673	-3.44	13.50	0.051	-25.85	37.50	0.023	-32.77	61.50	0.022	-33.15	85.50	0.008	-41.94
0.00	0.807	-1.86	14.00	0.054	-25.35	38.00	0.022	-33.15	62.00	0.030	-30.46	86.00	0.009	-40.92
0.25	0.912	-0.80	14.50	0.072	-22.85	38.50	0.032	-29.90	62.50	0.039	-28.18	86.50	0.009	-40.92
0.50	0.977	-0.20	15.00	0.072	-22.85	39.00	0.038	-28.40	63.00	0.044	-27.13	87.00	0.008	-41.94
0.75	1.000	0.00	15.50	0.052	-25.68	39.50	0.036	-28.87	63.50	0.045	-26.94	87.50	0.007	-43.10
1.00	0.979	-0.18	16.00	0.040	-27.96	40.00	0.027	-31.37	64.00	0.043	-27.33	88.00	0.006	-44.44
1.25	0.918	-0.74	16.50	0.056	-25.04	40.50	0.020	-33.98	64.50	0.037	-28.64	88.50	0.005	-46.02
1.50	0.825	-1.67	17.00	0.066	-23.61	41.00	0.026	-31.70	65.00	0.028	-31.06	89.00	0.003	-50.46
1.75	0.711	-2.96	17.50	0.055	-25.19	41.50	0.035	-29.12	65.50	0.019	-34.42	89.50	0.002	-53.98
												90.00	0.000	---