

**MINOR CHANGE APPLICATION**  
**CENTRAL FLORIDA EDUCATIONAL FOUNDATION, INC.**  
**W240BV FM TRANSLATOR STATION**  
**CH 240D - 95.9 MHZ - 0.038 KW**  
**MOUNT DORA, FLORIDA**  
**February 2006**

**EXHIBIT A**

As indicated on Exhibit A1, the proposed operation of W240BV with an effective radiated power of 0.038 kilowatt at 67.0 meters above ground level will not cause interference to any existing, applied for or proposed facility. However, the W240BV site is inside the 60 dBu contours of third adjacent stations WHTQ, Orlando, Florida and WPYO, Maitland, Florida. Due to the relationship between W240BV and both WHTQ and WPYO, a 40 dB ratio of the protected and interfering contours applies. As the site for W240BV is inside the protected contour of both stations, we have applied the 40 dB ratio to the contour of each station, based on their respective contour at the site. We have calculated that the WHTQ contour at the W240BV site is 65.9 dB. The WPYO contour at the site is 61.0 dB.

The existing/proposed W240BV antenna system is an Electronics Research, Inc. ("ERI"), Model 100-4-HW (four bay low power, half wavelength spaced). ERI has provided the vertical elevation pattern of the antenna system, so that calculations of the actual power level at depression angles between 5° and 90° could be calculated (see Exhibit A3). Applying the actual relative field values, it was then possible to calculate, using a free space calculation, the actual distance to the interfering contour (F50/10) of the translator with respect to WHTQ and WPYO. As the interfering contour of WHTQ is inside that of the WPYO facility, a calculation of the WPYO contour was made.

As indicated in Exhibit A4, we have calculated the elevation above the ground of the interference from the proposed W240BV translator. The closest point above the ground that the interfering contour reaches is 5.6 meters ( 18.4 feet) above ground. This point occurs at a distance of 229.1 meters (751.6 feet) out from the base of the tower. Applying this distance to topographic maps and satellite photos, it has been determined that there are no structures in most of the area within this radius from the site. Those structures which do exist are all single story business, retail and professional offices (see Exhibit A5). As the interfering contour does not reach the ground and will not impact reception of service from either WHTQ or WPYO within the buildings in the area, the interference is, therefore, over an unpopulated area. As such, it is believed that the proposed W240BV facility is in compliance with §74.1204(d) of the Commission's rules.

Further, CFEF, will coordinate the commencement of operation of the proposed facility in conjunction with engineering representatives of the licensees of WHTQ and WPYO to insure the operation of W240BV will not cause interference to either station.<sup>2</sup> Should any actual interference be detected, CFEF will reduce the power of the translator or suspend operations, as needed, to eliminate the interference.

---

2) CFEF has already had several discussions and meetings with the Chief Engineer of WHTQ and WPYO, Steve Fluker, regarding this proposed power increase.

**MINOR CHANGE APPLICATION**  
**CENTRAL FLORIDA EDUCATIONAL FOUNDATION, INC.**  
**W240BV FM TRANSLATOR STATION**  
**CH 240D - 95.9 MHZ - 0.038 KW**  
**MOUNT DORA, FLORIDA**  
**February 2006**

**EXHIBIT A1**

Interference Study for W240BV FM Translator Mount Dora, FL  
Using Present/Proposed Site as Reference  
CH# 240D - 95.9 MHz, Pwr= 0.038 kW, HAAT=74.2M, COR= 97 M

REFERENCE										DISPLAY DATES	
28 49 15 N.		Average Protected F(50-50)= 4.4 km								DATA	02-04-06
81 41 47 W.		Ave. F(50-10) 40 dBu= 14.0 54 dBu= 6.3 100 dBu= .4								SEARCH	02-06-06
CH CITY	CALL	TYPE STATE	AZI. <--	DIST FILE #	LAT. LNG.	Pwr (kW) HAAT (M)	COR (M) INT (km)	PRO (km) LICENSEE	*IN* (Overlap in km)	*OUT*	
240D Mount Dora	W240BV	LIC C FL	0.0 0.0	0.00 BLFT-20051006ABO	28 49 15 81 41 47	0.001 79	97 9.2	2.8 Central Florida Educational	-16.33*	-26.73*	
243C Orlando	WHTQ	LIC NCY FL	114.0 294.3	68.68 BLH-20011219AAC	28 34 07 81 03 16	100.000 449	463 12.1	83.4 Cox Radio, Inc.	50.11	-15.13*	
237C3 Maitland	WPYO	LIC ZCX FL	140.2 320.3	35.62 BLH-20040325AHN	28 34 27 81 27 46	9.974 145	173 3.7	37.6 CXR Holdings, L.L.C.	24.97	-2.41*	
240L1 Summerfield	WJRN-L	LIC FL	297.2 116.9	46.91 BLL-20040825ACC	29 00 45 82 07 31	0.100 15	40 18.6	5.6 Hispanic-Multicultural Broad	21.25	17.59	
239C3 Ormond-by-the-sea	WHOGFM	LIC CX FL	52.5 232.8	76.23 BMLH-20040702AEK	29 14 11 81 04 22	25.000 96	103 59.3	38.3 Black Crow Radio, LLC	10.59	28.88	
238A Silver Springs	WNDD	LIC CN FL	326.5 146.3	61.48 BLH-19950501KA	29 16 55 82 02 50	6.000 102	118 2.8	28.6 Ocala Broadcasting Corporation	51.68	32.49	
241A Dade City	WTMPFM	CP CX FL	236.7 56.4	70.16 BPH-20020128AAO	28 28 22 82 17 45	2.800 157	180 43.9	29.0 Tama Radio Licenses of Tampa	19.22	31.06	
241A Dade City	WTMPFM	LIC ZCN FL	236.7 56.4	70.16 BLH-19951212KA	28 28 22 82 17 45	0.757 157	180 32.1	21.6 Tama Radio Licenses Of Tampa	31.03	38.44	
240A Otter Creek	VA240	VAC N FL	294.6 114.0	124.43	29 16 52 82 51 42	6.000 102	102 87.0	28.5	30.37	72.22	
241D Kissimmee	AP241	APP DC FL	157.8 337.9	61.04 BNPFT-20030828AOI	28 18 40 81 27 36	0.003 36	64 3.6	2.6 Bible Broadcasting Network	50.40	48.40	
239L1 Christmas	WLPM-L	CP FL	119.6 299.8	63.50 BNPL-20010615ARQ	28 32 17 81 07 53	0.100 31	45 8.1	5.7 Orange Blossom Community	48.78	48.31	
239L1 Buena Ventura Lakes	WBVL-L	CP FL	146.3 326.4	66.50 BNPL-20010611ADH	28 19 20 81 19 06	0.100 28	49 8.0	5.6 Latinos Broadcasting Orgin	51.44	50.77	
239C1 Clearwater	WBTP	LIC CX FL	220.8 40.3	139.49 BMLH-20041215ACC	27 52 00 82 37 27	100.000 186	186 92.8	62.4 Clear Channel Broadcasting	39.69	67.03	
240C3 Sebastian	WSJZFM	CP NCX FL	132.6 313.2	152.08 BPH-20051011AJJ	27 53 21 80 33 27	21.500 106	112 111.1	38.8 Cumulus Licensing LLC	34.32	91.14	
238D Kissimmee	970117	APP CN FL	158.9 339.0	66.39 BPFT-19970117TJ	28 15 44 81 27 05	0.055 50	73 0.5	6.3 Hispanic Broadcast System	58.85	59.68	
238D Kissimmee	961031	APP CN FL	158.9 339.0	66.39 BPFT-19961031TA	28 15 44 81 27 05	0.055 50	73 0.5	6.3 Bible Broadcasting Network	58.85	59.68	

ERP and HAAT on direct-line with reference station.

""affixed to 'IN' or 'Out' values = site inside protected contour.



**MINOR CHANGE APPLICATION**  
**CENTRAL FLORIDA EDUCATIONAL FOUNDATION, INC.**  
**W240BV FM TRANSLATOR STATION**  
**CH 240D - 95.9 MHZ - 0.038 KW**  
**MOUNT DORA, FLORIDA**  
**February 2006**

**EXHIBIT A2**

Predicted contour:

N. Lat. = 28 49 15 - Tabulated Service and Interfering Contours  
W. Lng. = 81 41 47 - W240BV FM Translator Station - Mount Dora, Florida

HAAT and Distance to Contour - FCC Method - 30 Arc Second terrain database										
Azi.	HAAT	ERP kW	dBk	Field	60-F5	40-F1	54-F1	100-F1	101-F1	105.9-F1
000	79.0	0.0380	-14.20	1.000	7.14	23.89	10.19	0.43	0.39	0.22
010	77.4	0.0380	-14.20	1.000	7.07	23.64	10.09	0.43	0.39	0.22
020	77.4	0.0380	-14.20	1.000	7.07	23.64	10.09	0.43	0.39	0.22
030	77.1	0.0380	-14.20	1.000	7.05	23.59	10.08	0.43	0.39	0.22
040	72.0	0.0380	-14.20	1.000	6.82	22.79	9.75	0.43	0.39	0.22
050	63.4	0.0380	-14.20	1.000	6.41	21.45	9.19	0.43	0.39	0.22
060	61.5	0.0380	-14.20	1.000	6.33	21.14	9.05	0.43	0.39	0.22
070	62.8	0.0380	-14.20	1.000	6.38	21.35	9.14	0.43	0.39	0.22
080	63.7	0.0380	-14.20	1.000	6.43	21.49	9.20	0.43	0.39	0.22
090	64.8	0.0380	-14.20	1.000	6.48	21.67	9.28	0.43	0.39	0.22
100	66.3	0.0380	-14.20	1.000	6.55	21.91	9.38	0.43	0.39	0.22
110	66.1	0.0380	-14.20	1.000	6.54	21.88	9.37	0.43	0.39	0.22
120	67.7	0.0380	-14.20	1.000	6.62	22.13	9.47	0.43	0.39	0.22
130	67.2	0.0380	-14.20	1.000	6.59	22.05	9.44	0.43	0.39	0.22
140	74.1	0.0380	-14.20	1.000	6.91	23.12	9.89	0.43	0.39	0.22
150	77.5	0.0380	-14.20	1.000	7.07	23.66	10.10	0.43	0.39	0.22
160	76.3	0.0380	-14.20	1.000	7.02	23.47	10.03	0.43	0.39	0.22
170	77.9	0.0380	-14.20	1.000	7.09	23.73	10.13	0.43	0.39	0.22
180	76.6	0.0380	-14.20	1.000	7.03	23.52	10.04	0.43	0.39	0.22
190	74.3	0.0380	-14.20	1.000	6.92	23.15	9.90	0.43	0.39	0.22
200	75.8	0.0380	-14.20	1.000	6.99	23.39	9.99	0.43	0.39	0.22
210	77.0	0.0380	-14.20	1.000	7.05	23.59	10.07	0.43	0.39	0.22
220	76.0	0.0380	-14.20	1.000	7.00	23.43	10.01	0.43	0.39	0.22
230	74.5	0.0380	-14.20	1.000	6.93	23.19	9.92	0.43	0.39	0.22
240	78.0	0.0380	-14.20	1.000	7.10	23.74	10.13	0.43	0.39	0.22
250	78.6	0.0380	-14.20	1.000	7.12	23.83	10.17	0.43	0.39	0.22
260	76.9	0.0380	-14.20	1.000	7.05	23.57	10.07	0.43	0.39	0.22
270	77.5	0.0380	-14.20	1.000	7.07	23.67	10.10	0.43	0.39	0.22
280	77.1	0.0380	-14.20	1.000	7.06	23.60	10.08	0.43	0.39	0.22
290	77.5	0.0380	-14.20	1.000	7.07	23.66	10.10	0.43	0.39	0.22
300	78.0	0.0380	-14.20	1.000	7.09	23.73	10.13	0.43	0.39	0.22
310	77.9	0.0380	-14.20	1.000	7.09	23.73	10.13	0.43	0.39	0.22
320	78.1	0.0380	-14.20	1.000	7.10	23.75	10.14	0.43	0.39	0.22
330	75.9	0.0380	-14.20	1.000	7.00	23.41	10.00	0.43	0.39	0.22
340	78.6	0.0380	-14.20	1.000	7.13	23.83	10.17	0.43	0.39	0.22
350	79.0	0.0380	-14.20	1.000	7.14	23.89	10.19	0.43	0.39	0.22

AMSL= 97 M



ELECTRONICS RESEARCH, INC.  
108 MARKET STREET  
NEWBURGH, IN. 47630

FIGURE H4

-----THEORETICAL-----  
VERTICAL PLANE RELATIVE FIELD

4 ERI TYPE SHP, SHPX, LP, OR LPX ELEMENTS  
0 DEGREE(S) BEAM TILT  
0 PERCENT FIRST NULL FILL

MAY 24, 1993

ELEMENT SPACING:  
0.5 WAVELENGTH

POWER GAIN IS 1.307 IN THE HORIZONTAL PLANE(1.307 IN THE MAX.)

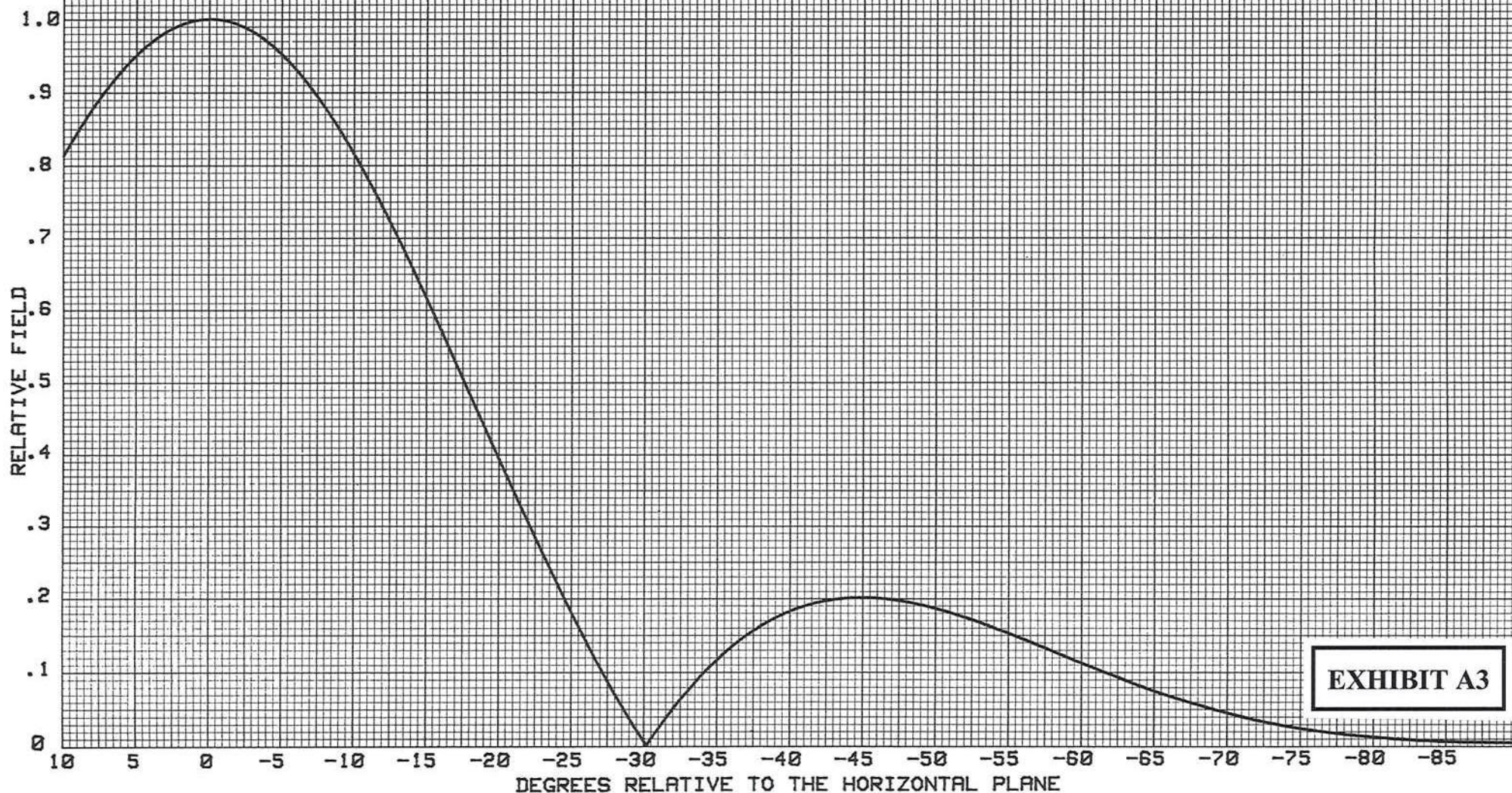


EXHIBIT A3



CALL: WPYO  
 POWER (Watts): 38  
 ANTENNA AGL (m): 67

INPUT FROM MFG			INPUT FROM CALC		
DEPRESSION ANGLE	ANTENNA RELATIVE FIELD	ERP (WATTS)	DISTANCE TO INTERFERING CONTOUR (m)	HORIZONTAL DISTANCE FROM TOWER (m)	VERTICAL DISTANCE FROM GROUND (m)
5	0.955	34.7	368.3	366.9	34.9
10	0.815	25.0	312.6	307.9	12.7
15	0.615	14.4	237.2	229.1	5.6
20	0.395	5.9	151.9	142.7	15.0
25	0.180	1.2	68.5	62.1	38.1
30	0.000	0.0	2.0	1.7	66.0
35	0.128	0.6	48.4	39.6	39.2
40	0.181	1.2	68.5	52.5	23.0
45	0.201	1.5	76.6	54.2	12.8
50	0.188	1.3	71.3	45.8	12.4
55	0.155	0.9	59.3	34.0	18.4
60	0.120	0.5	44.2	22.1	28.7
65	0.075	0.2	28.0	11.8	41.6
70	0.045	0.1	19.8	6.8	48.4
75	0.025	0.0	2.0	0.5	65.1
80	0.011	0.0	2.0	0.3	65.0
85	0.010	0.0	2.0	0.2	65.0
90	0.005	0.0	2.0	0.0	65.0
WORST CASE HEIGHT AGL (m)					5.6



# GRAHAM BROCK, INC.

BROADCAST TECHNICAL CONSULTANTS

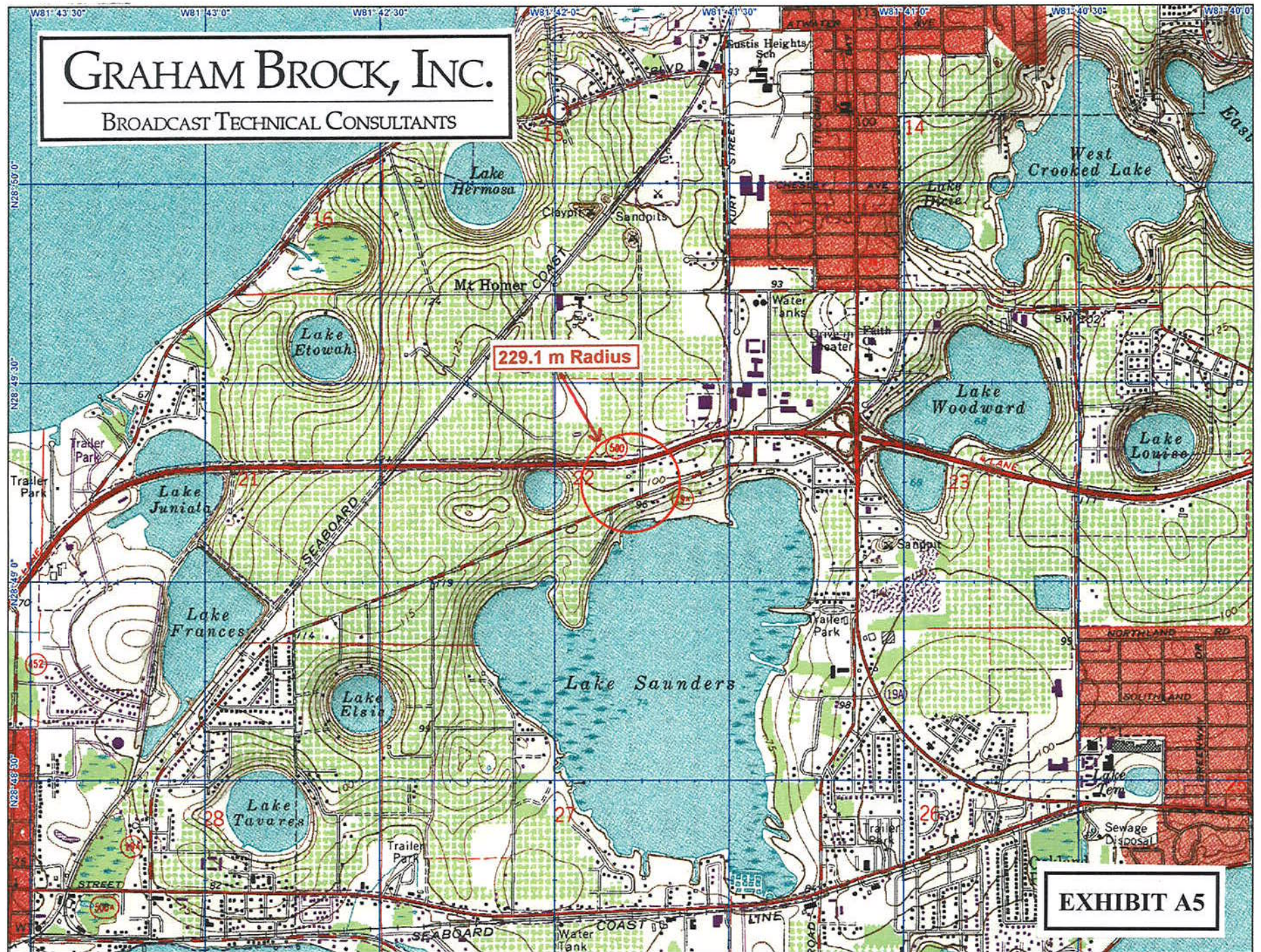
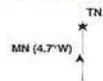
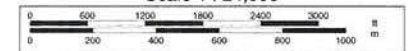


EXHIBIT A5



Scale 1 : 24,000



1" = 2,000.0 ft

Data Zoom 13-1