

## **Allocation Study**

### **1. Compliance with 47 C.F.R. 73.207**

The proposed facility meets all minimum distance separation requirements with regard to co-channel, first, second, or third adjacent channel stations, and those separated by 53/54 channels, except the licensed facility of KQMT on channel 258C.

This application proposes contour protection (47 C.F.R. 73.215(e)) for KQMT.

The minimum separation requirement between a class C3 and a class C facility (NEW and KQMT), which are first adjacent channels, is 226 km. Exhibit 30-A shows that KQMT is separated from the proposed facility by 229.78 km.

Therefore, the proposed facility is permitted to use contour protection toward the short-spaced facility (See Exhibit 34 for compliance with contour protection requirements).

### **2. Fully Spaced Theoretical Site**

A theoretical allotment site has been identified. It is located at 38° 47' 24.9" N by 107° 42' 05.9" W and is, in fact, fully spaced. However, there is not a tower at those coordinates and to construct a tower would cause financial hardship.

### **Exhibit Index:**

- Exhibit 30-A shows the spacing at the proposed site.
- Exhibit 30-B is a topographical map of the theoretical allotment site and the theoretical spacings chart which shows compliance with 47 C.F.R. 73.207.
- Exhibit 30-C shows the city of license coverage map for the theoretical allotment site.
- Exhibit 34 shows the protected and interfering contours, for the proposed operation and the short-spaced stations.

**New Site Spacing**

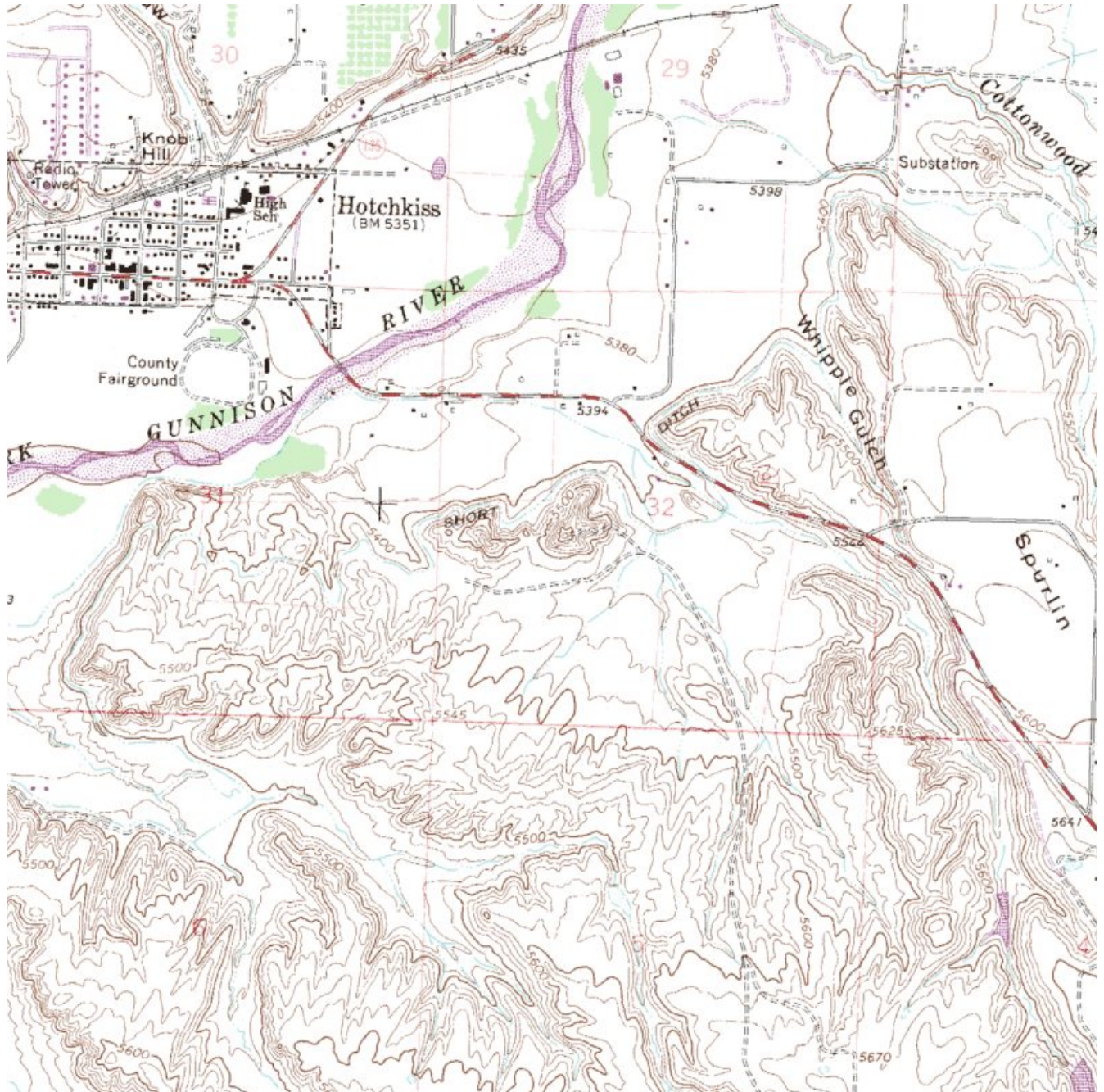
REFERENCE			DISPLAY DATES
38 52 28.0 N.		CLASS = C3	DATA 09-11-12
107 39 40.0 W.	Current	Spacings to 3rd Adj.	SEARCH 09-11-12
----- Channel 258 - 99.5 MHz -----			

Call		Channel	Location		Azi	Dist	FCC	Margin
1496399% APP		258C3	Hotchkiss	CO	197.6	12.46	152.5	-140.0
AU9310216%								
	VAC	258C3	Hotchkiss	CO	197.6	12.46	152.5	-140.0
1504987% RSV-A		258C3	Colona	CO	181.2	54.06	152.5	-98.4
1504804% APP		258C3	Colona	CO	181.2	54.06	152.5	-98.4
KQMT	LIC-D	258C	Denver	CO	64.8	229.32	236.5	-7.2
KEKB	LIC	260C	Fruita	CO	283.1	96.30	95.5	0.8
KMTS	LIC	256C3	Glenwood Springs	CO	20.5	78.16	42.5	35.7
KCJX	LIC-D	205C1	Carbondale	CO	22.5	65.54	23.5	42.0

**Educational Media Foundation**  
5700 West Oaks Boulevard  
Rocklin, CA 95765

*Exhibit 30-B*  
*Hotchkiss, CO*

**Topographical Map of Theoretical Allotment Coordinates**  
Coordinates are denoted by crosshair



**Educational Media Foundation**  
 5700 West Oaks Boulevard  
 Rocklin, CA 95765

*Exhibit 30-B*  
*Hotchkiss, CO*

Theoretical Allotment Spacings chart

REFERENCE				CLASS = C3				DI SPLAY DATES	
38 47 24.9 N.				Spacings to 3rd Adj.				DATA	09-28-12
107 42 05.9 W.				258 - 99.5 MHz				SEARCH	09-28-12
Call	Channel	Location			Azi	Dist	FCC	Margin	
-----									
AU9310216%									
	VAC	258C3	Hotchkiss	CO	186.0	2.53	152.5	-150.0	
1496399%	APP	258C3	Hotchkiss	CO	186.0	2.53	152.5	-150.0	
1504804%	APP	258C3	Colona	CO	176.9	44.77	152.5	-107.7	
1504987%	RSV-A	258C3	Colona	CO	176.9	44.77	152.5	-107.7	
KEKB	LIC	260C	Frui ta	CO	289.0	95.72	95.5	0.22	
KQMT	LIC-D	258C	Denver	CO	63.0	237.04	236.5	0.54	
KPTE	LIC	259C2	Durango	CO	183.8	161.41	116.5	44.9	
KMTS	LIC	256C3	Glenwood Springs	CO	20.5	88.08	42.5	45.6	
-----									

**Exhibit 30- C****theo**

Latitude: 38-47-24.90 N  
Longitude: 107-42-05.90 W  
ERP: 25.00 kW  
Channel: 258  
Frequency: 99.5 MHz  
AMSL Height: 2013.0 m  
Elevation: 1664.33 m  
Horiz. Pattern: Omni  
Vert. Pattern: No  
Prop Model: None

