

Three Angels Broadcasting Network  
 Dan Peek—Engineer  
 P.O. Box 220  
 West Frankfort, Illinois 62896

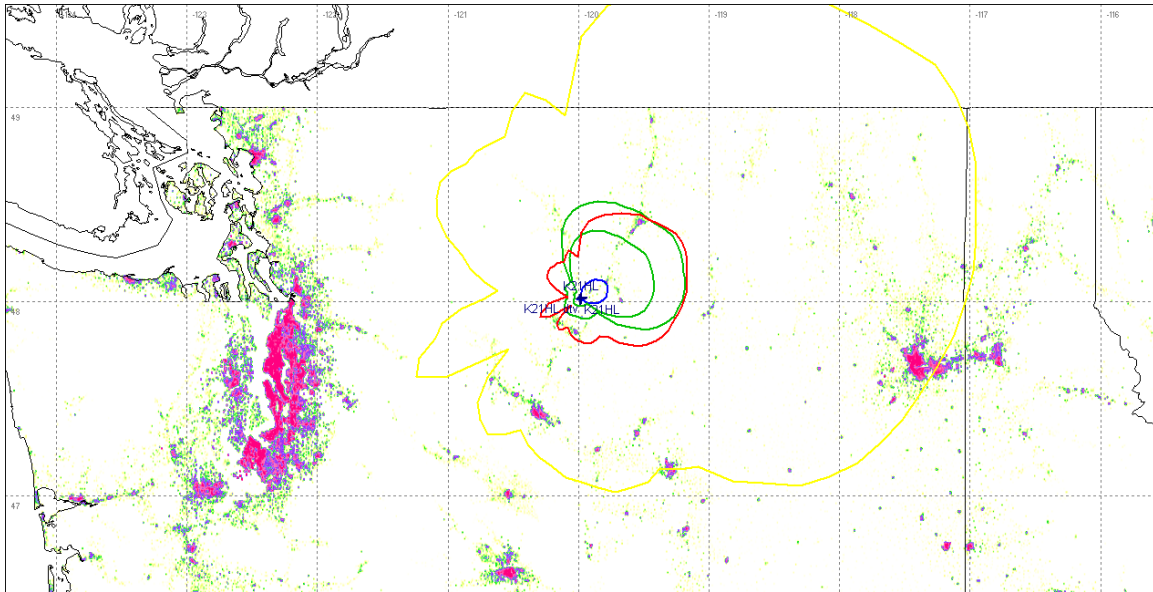
August 4, 2009

In evaluating the proposed digital flash cut for K21HL FID 132732, an outgoing interference study was executed on the proposed design in the attached application using the OET-69 Longley Rice methodology. The stations listed in the table below showed possible interference. When these stations were evaluated for outgoing interference, there was zero percent interference present found in each case when rounded to the nearest whole percent.

Three Angels Broadcasting Network recognizes that this application will require international coordination with Canada.

Callsign	Fac ID	ARN	City	Class	Overlap Pop%
K56BK	68501	BLTT19800721ID	BREWSTER & PATEROS	LP NTSC	0.00%
K44EN	68514	BLTT19960506KM	METHOW	LP NTSC	0.00%
K44CK	58692	BLTT19940609JD	CHELAN	LP NTSC	0.00%
K57AY	69508	BPTT20060928AJG	DRYDEN	LP NTSC	0.00%
K57BA	2502	BPTT20060928AIG	BAKER FLATS AREA	LP NTSC	0.00%
K55BN	2508	BLTT19780809IC	MONITOR, ETC.	LP NTSC	0.00%
K34EM	54348	BLTT19971030JA	WENATCHEE	LP NTSC	0.00%
K53DN	2494	BDFCDTL20090610ABR	EAST WENATCHEE, ECT	LP DTV	0.00%
K48BY	54287	BLTT19870929ID	QUINCY	LP NTSC	0.00%
K33EH	54288	BLTT19951215JA	QUINCY	LP NTSC	0.00%
KCYU-LP	58694	BLDTL20081219AAC	YAKIMA	LP DTV	0.00%
K55FO	2507	BLTT19891205IE	EAST WENATCHEE	LP NTSC	0.00%
KCTS-DT	33749	BLEDT19990415KH	SEATTLE	DTV	0.00%
K45AC	34873	BLTT19940914JD	WENATCHEE	LP NTSC	0.00%
K69BF	58686	BPTT20080821ADD	STEMILT, ETC.	LP NTSC	0.00%
K69BF	58686	BLTT20080804ADO	STEMILT, ETC.	LP NTSC	0.00%

The attached page identifies the considered list of stations when the outgoing interference analysis was executed.



The Green contours are the licensed and on air 64 and 74 dBu analog contours. The Red contour is the proposed 51dBu digital contour. The Yellow contour is the 19 dBu F(50,10) contour that crosses in to Canadian territory

## STATIONS CONSIDERED IN THE OUTGOING INTERFERENCE STUDY

Callsign	Fac ID	ARN	City	Class
K56BK	68501	BLTT19800721ID	BREWSTER & PATEROS	LP NTSC
K44EN	68514	BLTT19960506KM	METHOW	LP NTSC
K44CK	58692	BLTT19940609JD	CHELAN	LP NTSC
K57AY	69508	BPTT20060928AJG	DRYDEN	LP NTSC
K57BA	2502	BPTT20060928AIG	BAKER FLATS AREA	LP NTSC
K55BN	2508	BLTT19780809IC	MONITOR, ETC.	LP NTSC
K34EM	54348	BLTT19971030JA	WENATCHEE	LP NTSC
K53DN	2494	BDFCDTL20090610ABR	EAST WENATCHEE, ECT	LP DTV
K48BY	54287	BLTT19870929ID	QUINCY	LP NTSC
K33EH	54288	BLTT19951215JA	QUINCY	LP NTSC
KCYU-LP	58694	BLDTL20081219AAC	YAKIMA	LP DTV
K55FO	2507	BLTT19891205IE	EAST WENATCHEE	LP NTSC
KCTS-DT	33749	BLEDT19990415KH	SEATTLE	DTV
K45AC	34873	BLTT19940914JD	WENATCHEE	LP NTSC
K69BF	58686	BPTT20080821ADD	STEMILT, ETC.	LP NTSC
K69BF	58686	BLTT20080804ADO	STEMILT, ETC.	LP NTSC
K21HL	132732	BDISTTL20081022ABU	PATEROS	LP NTSC
	98599		CASTLEGAR	NTSC ALLOT
	97074		OSOYOOS	NTSC ALLOT
	98601		MERRITT	NTSC ALLOT
K39DM	10947	BPTTL20060127ARI	ELLENSBURG	LP NTSC
DK39DM	10947	BSTA20090724AEE	ELLENSBURG	LP NTSC
	98700		OLIVER	NTSC ALLOT
CBUT33	97993		ROCK CREEK	LP NTSC
K39DL	67007	BLTTL19980107JB	MOSES LAKE	LP NTSC
K58BL	52273	BLTT20060428ACH	MOSES LAKE, ETC.	LP NTSC
VACANT	179182	BPFS20081119ACY	MERRITT	DTV
KWDK-DT	35419	BLEDT20050421AAE	TACOMA	DTV
VACANT	179307	BPFS20081119AQN	VERNON	DTV
K40AE	69502	BLTT19810408JG	CASHMERE	LP NTSC
KDHW-LP	10907	BLTTA20090709AJY	YAKIMA	A NTSC
KDHW-LP	10907	BPTTA20040525ADF	YAKIMA	A NTSC
K56EG	57511	BLTTL20040616AAK	YAKIMA, ETC.	LP NTSC
K43GY	57521	BLTTL20040615ACA	YAKIMA, ETC.	LP NTSC
K60EB	57522	BLTTL20040616AAS	YAKIMA	LP NTSC
VACANT	179299	BPFS20081119AQC	VANCOUVER	DTV
K53DN	2494	BMPTTL20090610ACE	EAST WENATCHEE	LP NTSC
	97014		SUMMERLAND	NTSC ALLOT
VACANT	179221	BPFS20081119AFY	PENTICTON	DTV

CHBC-TV-1	162910	BPFS20041005AAD	PENTICTON	DTV
	98444		HOPE	NTSC ALLOT
	97988		CHILLIWACK	LP NTSC
K41CK	34999	BLTT19890227IN	ELLENSBURG	LP NTSC
NEW	131124	BNPTTL20000831CLI	BELLINGHAM	LP NTSC
CKTN-TV	162947	BPFS20041005ABO	TRAIL	DTV
K54GS	66788	BDISTTL20051221AJD	PUYALLUP	LP NTSC
VACANT	179284	BPFS20081119API	TRAIL	DTV
	98325		MATSQUI	LP NTSC
NEW	130075	BNPTT20000830BHJ	BELLINGHAM	LP NTSC
K38JH	128176	BLTTL20081103ADS	BELLINGHAM	LP NTSC
K14IF	71624	BLTT20051206ADC	SPOKANE	LP NTSC
K41IP	130927	BDFCDTL20090630AFJ	RAINIER	LP DTV
K65BU	62387	BDFCDTT20090513ACB	GRAYS RIVER	LP DTV
KORK-LD	167794	BSTA20090413AFO	PORTLAND	LP DTV
K41FJ	34861	BLTT20021023AAB	COEUR D'ALENE, ETC.	LP NTSC
NEW	167794	BDCCDTL20061025ADW	PORTLAND	LP DTV
NEW-DT	162814	BPFS20040930AWR	CRANBROOK	DTV
VACANT	179097	BPFS20081118AHY	CRANBROOK	DTV
	98602		PORT ALBERNI	NTSC ALLOT
CFJC-TV-4	162801	BPFS20040930ABH	CLINTON	DTV
VACANT	179055	BPFS20081118AEC	CLINTON	DTV
VACANT	179226	BPFS20081119AGE	PORT ALBERNI	DTV
CBUBT-2	162830	BPFS20040930BBN	GOLDEN	DTV
VACANT	179142	BPFS20081119ABB	GOLDEN	DTV
K36CI	32925	BLTT20020122ABK	JULIAETTA	LP NTSC
K41IP	130927	BLTT20070209ABP	RAINIER	LP NTSC
K65BU	62387	BDISTT20060323AIE	GRAYS RIVER	LP NTSC
K77BG	49333	BLTT20010420AAU	ROCKAWAY, ETC.	LP NTSC
K41CL	49289	BLTTL19980903JG	WASCO/HEPPNER	LP NTSC