

## Exhibit 13

Radio Training Network, Inc.

### W231AO Channel Space report

**ComStudy 2.2 search of channel 231 (94.1 MHz Class D)  
at 32-30-44.5 N, 85-00-41.2 W.**

CALL	CITY	ST CHN CL	DIST	SEP	BRNG	CLEARANCE
W234BX	HIGHLAND PINES	GA 234 D	0.00	0.00	90.0	-60.34 dB*a
NEW	COLUMBUS	GA 229 D	0.00	0.00	90.0	-56.05 dB*b
W231AO	COLUMBUS	GA 231 D	5.72	0.00	59.6	-54.03 dB*c
WFXE	COLUMBUS	GA 285 A	5.78	10.00	177.1	-4.2*d
WFXE	COLUMBUS	GA 285 A	6.60	10.00	219.3	-3.4*d
WTGZ	UNION SPRINGS	AL 230 C3	65.70	0.00	250.9	6.16 dB
WGZZ	WAVERLY	AL 232 A	52.01	0.00	298.8	6.48 dB
WGZZ	WAVERLY	AL 232 A	53.43	0.00	289.0	6.62 dB
WFDR-FM	WOODBURY	GA 233 A	51.76	0.00	44.4	11.75 dB
WSTR	SMYRNA	GA 231 C0	152.01	0.00	24.3	15.66 dB
WSTR	SMYRNA	GA 231 C0	149.57	0.00	23.7	15.10 dB
WLEL	ELLAVILLE	GA 232 A	78.92	0.00	111.3	18.56 dB
W231AP	ALEXANDER CITY	AL 231 D	100.23	0.00	298.9	20.22 dB
WSTR	SMYRNA	GA 231 C0	152.90	0.00	21.4	21.06 dB
NEW	MACON	GA 231 D	133.92	0.00	75.2	22.85 dB
NEW	MACON	GA 231 D	133.97	0.00	75.2	22.82 dB
W231DF	MONTGOMERY	AL 231 D	118.66	0.00	262.5	24.56 dB
W231CW	PELL CITY	AL 231 D	178.84	0.00	313.2	24.96 dB

\*a See attached Waiver request showing protection of W234BX

\*b See attached Waiver request showing protection of FMX app on Ch229

\*c Current Licensed site for this Application

\*d The proposed W231AO facility has an ERP of less than 100 watts and exempt from IF separation requirement.

## **Exhibit 13**

Radio Training Network, Inc.

### **WAIVER REQUEST, SECTION 74.1204**

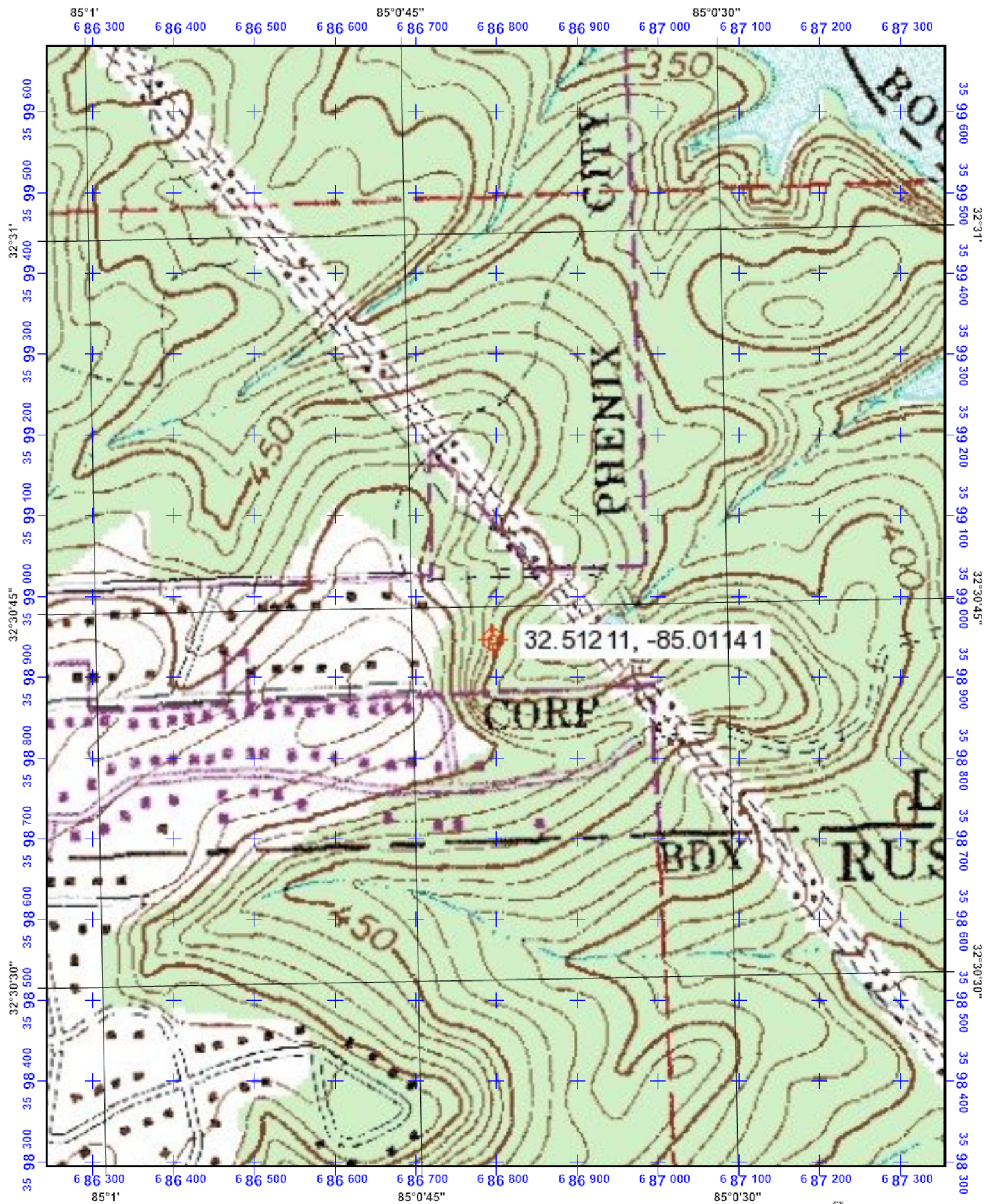
The proposed FM translator on channel 231 is located within the protected 60dbu contour of Translator W234BX on third adjacent channel 234 and application BNPFT-20170728AAL on second adjacent channel 229. The proposed W231AO will be co-located on the same tower as W234BX and new application on channel 229. Both of these facilities have a greater ERP than the proposed facility, therefore the proposed W231AO will have a lower signal level than the protected facilities at all possible receiver locations.

Therefore, Radio Training Network, Inc. respectfully requests a waiver of C.F.R 74.1204 based on no population within the area of predicted interference.

Should any actual interference occur, then Radio Training Network, Inc will promptly reduce power or suspend operation of this translator in accordance with 47 C.F.R. 74.1203.







Universal Transverse Mercator (UTM) Projection Zone 16  
 North American Datum of 1983  
 100 meter UTM / USNG / MGRS  
 Grid Zone Designation: 16S  
 100,000-m Squares:FA

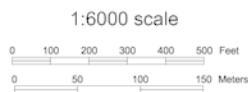
1:6000 scale  
 0 100 200 300 400 500 Feet  
 0 50 100 150 Meters

MN 2°  
 GN  
 TN 1°  
 Magnetic declination of 2W at center of map  
 on March 17, 2011





Universal Transverse Mercator (UTM) Projection Zone 16  
 North American Datum of 1983  
 100 meter UTM / USNG / MGRS  
 Grid Zone Designation: 16S  
 100,000-m Squares:FA



GN  
 MN  
 2°

Magnetic declination of 2W at center of map  
 on March 17, 2011