

TECHNICAL EXHIBIT  
MINOR CHANGE APPLICATION  
NEW TV STATION (FACILITY ID 84214)  
SENATOBIA, MISSISSIPPI  
CH 34 19.8 KW 169 M

Technical Narrative

This Technical Exhibit supports a minor change application for construction permit for a New unbuilt television station at Senatobia, Mississippi. The New station is authorized on analog channel 34 with a non-directional antenna maximum effective radiated power (ERP) of 1100 kilowatts (kW) and an antenna height above average terrain (HAAT) of 169 meters (BPET-19961001KI).

Proposed Facilities

The New station desires to “flash-cut” to digital mode on the current channel 34. Digital operation is proposed with a non-directional antenna, along with a maximum ERP of 19.8 kW and an antenna HAAT of 169 meters. The proposed site coordinates are (NAD27): 34-51-05 N, 90-00-19 W. The antenna structure registration number (ASRN) is 1045210.

Figure 2 is a map indicating that the proposed City-Grade contour will encompass all of the city limits of Senatobia (derived from 2000 U.S. Census information for Mississippi).

---

Pre-Transition Allocation Considerations

The proposed operation meets the FCC's interference standards to pertinent analog (NTSC) and DTV assignments using the procedures outlined in the FCC's OET-69 Bulletin and a 2 kilometer grid cell size as shown by the analysis provided in Figure 3. The proposed operation complies with the FCC's "de minimis" interference policy with respect to pertinent Class A TV assignments.

The proposed operation complies with the current Freeze on contour extension, as it will not extend coverage beyond the currently authorized Grade B contour (see Figure 2).

Post-Transition Allocation Considerations

The proposed operation meets the FCC's interference standards to pertinent DTV Appendix B allotments using the procedures outlined in the FCC's OET-69 Bulletin and a 2 kilometer grid cell size as shown by the analysis provided in Figure 4.

Population Served

The herein proposed facility is predicted to serve 1,155,453 persons, post-transition based upon the 2000 Census.

Radiofrequency Electromagnetic Field Exposure

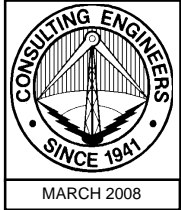
The proposed facilities were evaluated in terms of potential radio frequency (RF) energy exposure at ground level to workers and the general public. The radiation center for the proposed antenna is located 168 meters above ground level with a maximum ERP of 19.8 kW. A "worst case" relative field value of 0.8 was assumed for the downward antenna radiation calculation (see Appendix). The calculated power density at a point 2 meters above ground level will not exceed  $0.0154 \text{ mW/cm}^2$ . This is less than 5% of the FCC's recommended limit of  $0.395 \text{ mW/cm}^2$  for channel 34 for an "uncontrolled" environment.

Access to the transmitting site will be restricted and appropriately marked with warning signs. As this will be a multi-user site an agreement between the stations will control access. In the event that workers or other authorized personnel enter restricted areas or climb the tower, appropriate measures will be taken to assure worker safety with respect to radio frequency radiation exposure. Such measures include reducing the average exposure by spreading out the work over a longer period of time, wearing "accepted" RFR protective clothing and/or RFR exposure monitors or scheduling work when the stations are at reduced power or shut down.

It is noted that this statement only addresses the potential for radiofrequency electromagnetic field exposure. All other aspects of the environmental processing analysis will be or already have been provided to the FCC by the tower owner.

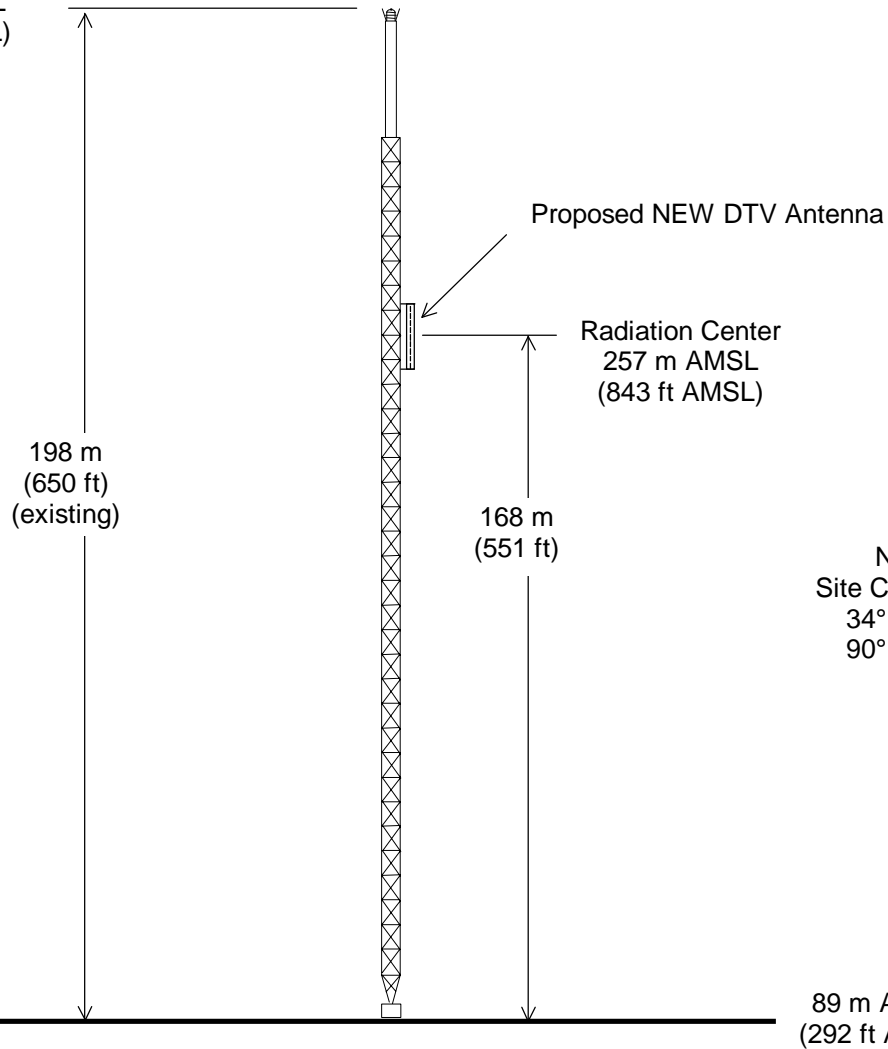
Charles A. Cooper  
du Treil, Lundin & Rackley, Inc.  
201 Fletcher Avenue  
Sarasota, Florida 34237  
(941) 329-6000  
CHARLES@DLR.COM

March 10, 2008



ASRN: 1045210

287 m AMSL  
(942 ft AMSL)



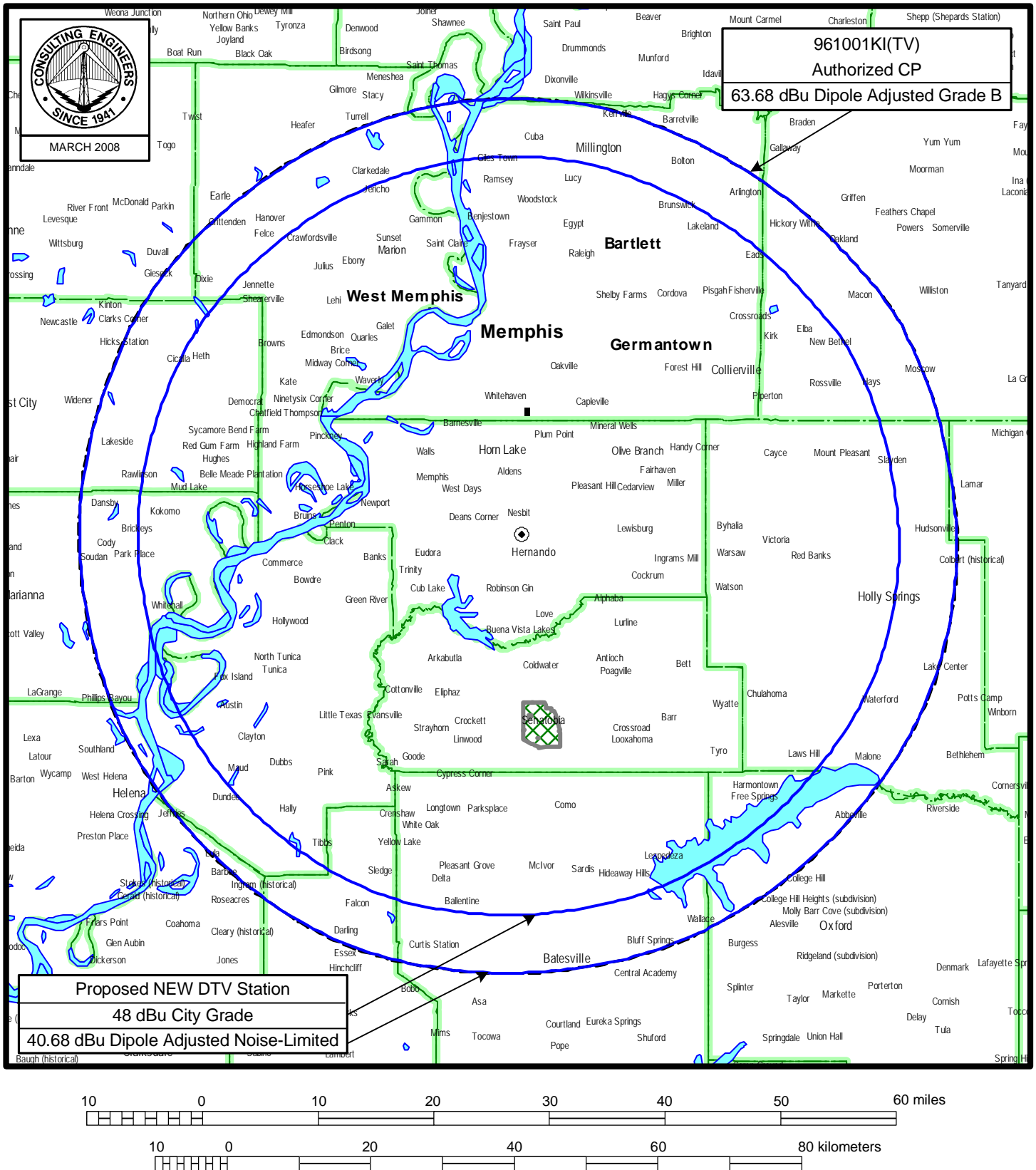
Not to Scale

## ANTENNA AND SUPPORTING STRUCTURE

NEW DTV STATION  
SENATOBIA, MISSISSIPPI  
CH 34 19.8 KW 169 M

du Treil, Lundin & Rackley, Inc. Sarasota, Florida

**Figure 2**



## **PREDICTED COVERAGE CONTOURS**

**NEW DTV STATION**  
**SENATOBIA, MISSISSIPPI**  
**CH 34 19.8 KW 169 M**

du Treil, Lundin & Rackley, Inc Sarasota, Florida

**Figure 3**  
**Sheet 1 of 12**

Census data selected 1990

TV INTERFERENCE and SPACING ANALYSIS PROGRAM

Date: 03-10-2008 Time: 14:28:47

Record Selected for Analysis

961001KI USERRECORD-01 SENATOBIA MS US  
Channel 34 ERP 19.8 kW HAAT 167. m RCMSL 00257 m  
Latitude 034-51-05 Longitude 0090-00-19  
Status APP Zone 2 Border  
Last update Cutoff date Docket  
Comments  
Applicant

Cell Size for Service Analysis 2.0 km/side

Distance Increments for Longley-Rice Analysis 1.00 km

Facility meets maximum height/power limits

Azimuth (Deg)	ERP (kW)	HAAT (m)	41.0 dBu F(50,90) (km)
0.0	19.800	164.3	60.1
45.0	19.800	147.2	58.9
90.0	19.800	163.1	60.0
135.0	19.800	162.1	60.0
180.0	19.800	170.0	60.5
225.0	19.800	182.2	61.4
270.0	19.800	177.2	61.0
315.0	19.800	170.8	60.6

Evaluation toward Class A Stations

No Spacing violations or contour overlap to Class A stations

Class A Evaluation Complete

Proposed facility OK to FCC Monitoring Stations

Proposed facility OK toward West Virginia quite zone

Proposed facility OK toward Table Mountain

Proposed facility is beyond the Canadian coordination distance

Proposed facility is beyond the Mexican coordination distance

Proposed station is OK toward AM broadcast stations

\*\*\*\*\*

**Figure 3**  
**Sheet 2 of 12**

Start of Interference Analysis

Channel	Call	City/State	ARN
34	961001KI	SENATOBIA MS	USERRECORD01

Stations Potentially Affected by Proposed Station

Chan	Call	City/State	Dist(km)	Status	Application Ref. No.
19	KTEJ	JONESBORO AR	136.0	LIC	BLET -20060627AAF
30	WLMT	MEMPHIS TN	51.5	LIC	BMLCT -20050427ABQ
34	WCFT-DT	TUSCALOOSA AL	281.6	PLN	DTVPLN -DTVP0924
34	KPBI	EUREKA SPRINGS AR	396.6	LIC	BLCT -20050124AFT
34	WSIL-DT	HARRISBURG IL	323.3	PLN	DTVPLN -DTVP0936
34	WRBJ	MAGEE MS	306.4	LIC	BLCT -20060223AAV
34	960920LS	MAGEE MS	336.7	APP	BPCT -19960920LS
35	WCBI-DT	COLUMBUS MS	160.2	PLN	DTVPLN -DTVP0982
42	W42BY	MEMPHIS TN	32.7	LIC	BLTTL -19980629JE

\*\*\*\*\*

Analysis of Interference to Affected Station 1

NTSC Baseline Analysis

Channel	Call	City/State	Application Ref. No.
19	KTEJ	JONESBORO AR	DTVPLN -NPLN1039

Stations Potentially Affecting This Station

Chan	Call	City/State	Dist(km)	Status	Application Ref. No.
17	KLEP	NEWARK AR	64.0	PLN	DTVPLN -NPLN0978
18	KPOB-DT	POPLAR BLUFF MO	103.7	PLN	DTVPLN -DTVP0312
18	WMAVTV	OXFORD MS	203.8	PLN	DTVPLN -NPLN1022
19	WHNTTV	HUNTSVILLE AL	405.6	PLN	DTVPLN -NPLN1038
19	WUSI-DT	OLNEY IL	401.0	PLN	DTVPLN -DTVP0351
19	WLCN	MADISONVILLE KY	334.4	PLN	DTVPLN -NPLN1043
19	KSPR-DT	SPRINGFIELD MO	243.3	PLN	DTVPLN -DTVP0359
20	KTEJ-DT	JONESBORO AR	0.0	PLN	DTVPLN -DTVP0387
27	KLEP-DT	NEWARK AR	64.0	PLN	DTVPLN -DTVP0663

Results for: 19N AR JONESBORO	DTVPLN	NPLN1039	PLN
	POPULATION	AREA (sq km)	
within Noise Limited Contour	246175	17569.8	
not affected by terrain losses	245700	17497.6	
lost to NTSC IX	885	44.2	
lost to additional IX by ATV	83	16.1	
lost to all IX	968	60.2	

Analysis of current record

Channel	Call	City/State	Application Ref. No.
19	KTEJ	JONESBORO AR	BLET -20060627AAF

Stations Potentially Affecting This Station

Chan	Call	City/State	Dist(km)	Status	Application Ref. No.
18	KPOB-TV	POPLAR BLUFF MO	103.7	CP	BPCDT -19991019ABN
18	KPOB-DT	POPLAR BLUFF MO	103.7	PLN	DTVPLN -DTVP0312
18	WMAV-TV	OXFORD MS	203.7	LIC	BMLCT -20030106AAJ
19	WHNT-TV	HUNTSVILLE AL	405.6	LIC	BLCT -20011116ABY
19	WUSI-DT	OLNEY IL	401.0	PLN	DTVPLN -DTVP0351
19	WAZE-TV	MADISONVILLE KY	334.4	LIC	BLCT -19921030KF
19	KLTM-TV	MONROE LA	394.7	LIC	BLEDT -20040818AAF

**Figure 3**  
**Sheet 3 of 12**

19	KSPR-DT	SPRINGFIELD MO	243.3	PLN	DTVPLN	-DTVP0359
19	KSPR	SPRINGFIELD MO	239.8	CP MOD	BMPCDT	-20071205AAU
20	KTEJ-DT	JONESBORO AR	0.0	PLN	DTVPLN	-DTVP0387
23	NEW	MEMPHIS TN	71.4	APP	BPRM	-20070724ADE
27	KLEP-DT	NEWARK AR	64.0	PLN	DTVPLN	-DTVP0663
34	961001KI	SENATOBIA MS	136.0	CP	BPET	-19961001KI
34	961001KI	SENATOBIA MS	136.0	APP	USERRECORD-01	

Proposed station is beyond the site to  
nearest cell evaluation distance

#####

#### Analysis of Interference to Affected Station 2

##### NTSC Baseline Analysis

Channel	Call	City/State	Application Ref. No.
30	WLMT	MEMPHIS TN	DTVPLN -NPLN1392

#### Stations Potentially Affecting This Station

Chan	Call	City/State	Dist(km)	Status	Application Ref. No.
28	WREG-DT	MEMPHIS TN	3.1	PLN	DTVPLN -DTVP0727
29	WKNO-DT	MEMPHIS TN	0.0	PLN	DTVPLN -DTVP0767
30	WBMG-DT	BIRMINGHAM AL	333.4	PLN	DTVPLN -DTVP0774
30	NEW	EL DORADO AR	355.6	PLN	DTVPLN -NPLN1373
30	KLRT-DT	LITTLE ROCK AR	246.3	PLN	DTVPLN -DTVP0775
30	WKOH-DT	OWENSBORO KY	373.5	PLN	DTVPLN -DTVP0788
30	KDNLTV	ST. LOUIS MO	383.4	PLN	DTVPLN -NPLN1382
30	WGBC	MERIDIAN MS	331.4	PLN	DTVPLN -NPLN1383
30	WUXP	NASHVILLE TN	299.8	PLN	DTVPLN -NPLN1393
31	NEW	CLEVELAND MS	177.8	PLN	DTVPLN -NPLN1410
31	WLMT-DT	MEMPHIS TN	0.0	PLN	DTVPLN -DTVP0841
44	NEW	GREENVILLE MS	202.3	PLN	DTVPLN -NPLN1665
45	NEW	HOUSTON MS	165.9	PLN	DTVPLN -NPLN1685

Results for: 30N TN MEMPHIS			DTVPLN	NPLN1392	PLN
			POPULATION	AREA (sq km)	
	within Noise Limited Contour		1125574	17618.5	
	not affected by terrain losses		1124894	17526.4	
	lost to NTSC IX		1855	104.1	
	lost to additional IX by ATV		2286	144.1	
	lost to all IX		4141	248.2	

#### Analysis of current record

Channel	Call	City/State	Application Ref. No.
30	WLMT	MEMPHIS TN	BMLCT -20050427ABQ

#### Stations Potentially Affecting This Station

Chan	Call	City/State	Dist(km)	Status	Application Ref. No.
23	NEW	MEMPHIS TN	43.1	APP	BPRM -20070724ADE
28	WREG-DT	MEMPHIS TN	11.7	PLN	DTVPLN -DTVP0727
29	WKNO	MEMPHIS TN	14.1	CP MOD	BMPEDT -20021112ACA
29	WKNO-DT	MEMPHIS TN	14.1	PLN	DTVPLN -DTVP0767
29	WKNO	MEMPHIS TN	14.1	LIC	BLEDT -20060627ABE
30	WIAT	BIRMINGHAM AL	337.4	LIC	BLCDDT -20021219AAV
30	WBMG-DT	BIRMINGHAM AL	337.6	PLN	DTVPLN -DTVP0774
30	970331LG	EL DORADO AR	349.0	APP	BPET -19970331LG
30	960920KK	EL DORADO AR	368.3	APP	BPET -19960920KK
30	KLRT-TV	LITTLE ROCK AR	252.6	LIC	BLCDDT -20020507AAK
30	KLRT-DT	LITTLE ROCK AR	252.6	PLN	DTVPLN -DTVP0775
30	WKOH-DT	OWENSBORO KY	360.2	PLN	DTVPLN -DTVP0788

**Figure 3**  
**Sheet 4 of 12**

30	KDNL-TV	ST. LOUIS MO	370.6	LIC	BLCT	-19800312KG
30	WGBC	MERIDIAN MS	343.0	LIC	BLCT	-19910923KF
30	WUXP-TV	NASHVILLE TN	290.6	LIC	BLCT	-20041014AFP
31	WLMT-DT	MEMPHIS TN	14.1	PLN	DTVPLN	-DTVP0841
31	WLMT	MEMPHIS TN	0.0	LIC	BLCDDT	-20050427ABN
34	961001KI	SENATOBIA MS	51.5	CP	BPET	-19961001KI
45	WKDH	HOUSTON MS	176.3	APP	BPCT	-20060317ADW
45	WKDH	HOUSTON MS	176.3	LIC	BLCT	-20010619AAW
34	961001KI	SENATOBIA MS	51.5	APP	USERRECORD-01	

Proposal causes no interference

#####

#### Analysis of Interference to Affected Station 3

##### DTV Baseline Analysis

Channel	Call	City/State	Application Ref. No.
34	WCFT-DT	TUSCALOOSA AL	DTVPLN -DTVP0924

#### Stations Potentially Affecting This Station

Chan	Call	City/State	Dist(km)	Status	Application Ref. No.
33	WCFTTV	TUSCALOOSA AL	0.0	PLN	DTVPLN -NPLN1441
34	WDFXTV	OZARK AL	304.7	PLN	DTVPLN -NPLN1466
34	WHBR-DT	PENSACOLA FL	317.8	PLN	DTVPLN -DTVP0932
34	WNGMTV	ATHENS GA	337.6	PLN	DTVPLN -NPLN1471
34	WTNZ-DT	KNOXVILLE TN	422.0	PLN	DTVPLN -DTVP0956
35	WCBI-DT	COLUMBUS MS	137.3	PLN	DTVPLN -DTVP0982

Results for: 34A AL TUSCALOOSA			DTVPLN	DTVP0924	PLN
	HAAT 662.0 m, ATV ERP 198.0 kW				
		POPULATION	AREA (sq km)		
	within Noise Limited Contour	1382837	37360.8		
	not affected by terrain losses	1362889	36441.7		
	lost to NTSC IX	11451	310.4		
	lost to additional IX by ATV	22956	1241.6		
	lost to ATV IX only	22956	1241.6		
	lost to all IX	34407	1552.0		

##### NTSC Baseline Analysis

Channel	Call	City/State	Application Ref. No.
33	WCFTTV	TUSCALOOSA AL	DTVPLN -NPLN1441

#### Stations Potentially Affecting This Station

Chan	Call	City/State	Dist(km)	Status	Application Ref. No.
26	WYLE	FLORENCE AL	126.2	PLN	DTVPLN -NPLN1263
26	WTJP-DT	GADSDEN AL	98.2	PLN	DTVPLN -DTVP0628
26	WAIQ	MONTGOMERY AL	161.9	PLN	DTVPLN -NPLN1264
30	WBMG-DT	BIRMINGHAM AL	57.9	PLN	DTVPLN -DTVP0774
32	WAAY-DT	HUNTSVILLE AL	162.3	PLN	DTVPLN -DTVP0849
32	WHOATV	MONTGOMERY AL	161.9	PLN	DTVPLN -NPLN1420
33	WDFX-DT	OZARK AL	304.7	PLN	DTVPLN -DTVP0891
33	WHBR	PENSACOLA FL	317.8	PLN	DTVPLN -NPLN1446
33	WCPL-DT	CHATSWORTH GA	287.1	PLN	DTVPLN -DTVP0898
34	WCFT-DT	TUSCALOOSA AL	0.0	PLN	DTVPLN -DTVP0924
35	WCBI-DT	COLUMBUS MS	137.3	PLN	DTVPLN -DTVP0982
36	WABM-DT	BIRMINGHAM AL	53.7	PLN	DTVPLN -DTVP1000
36	WFIQ	FLORENCE AL	126.2	PLN	DTVPLN -NPLN1511
40	WJSUTV	ANNISTON AL	113.8	PLN	DTVPLN -NPLN1575
41	WIIQ	DEMOPOLIS AL	130.3	PLN	DTVPLN -NPLN1599
48	WAFF	HUNTSVILLE AL	159.7	PLN	DTVPLN -NPLN1728

**Figure 3**  
**Sheet 5 of 12**

Results for: 33N AL TUSCALOOSA      DTVPLN      NPLN1441      PLN  
    POPULATION      AREA (sq km)  
     within Noise Limited Contour      1383172      37372.9  
     not affected by terrain losses      1336455      35510.5  
     lost to NTSC IX      35987      2156.7  
     lost to additional IX by ATV      9760      96.7  
     lost to all IX      45747      2253.4

Analysis of current record  
 Channel      Call      City/State      Application Ref. No.  
     34      WCFT-DT      TUSCALOOSA AL      DTVPLN      -DTVP0924

Stations Potentially Affecting This Station

Chan	Call	City/State	Dist(km)	Status	Application Ref. No.
33	WCFT-TV	TUSCALOOSA AL	0.0	LIC	BLCT -19961025KE
34	WDFX-TV	OZARK AL	304.8	LIC	BLCT -20050519ABF
34	WHBR-DT	PENSACOLA FL	317.8	PLN	DTVPLN -DTVP0932
34	WHBR	PENSACOLA FL	319.4	LIC	BLCDT -20060627AAV
34	WUVG-TV	ATHENS GA	337.6	LIC	BLCT -19960614KH
34	WRBJ	MAGEE MS	248.8	LIC	BLCT -20060223AAV
34	960920LS	MAGEE MS	292.4	APP	BPCT -19960920LS
34	WTNZ	KNOXVILLE TN	424.4	LIC	BMLCDT -20040706ABG
34	WTNZ-DT	KNOXVILLE TN	422.0	PLN	DTVPLN -DTVP0956
35	WCBI-DT	COLUMBUS MS	137.3	PLN	DTVPLN -DTVP0982
34	961001KI	SENATOBIA MS	281.6	APP	USERRECORD-01

Total scenarios = 2

Result key: 1  
 Scenario 1 Affected station 3  
 Before Analysis

Results for: 34A AL TUSCALOOSA      DTVPLN      DTVP0924      PLN  
     HAAT 662.0 m, ATV ERP 198.0 kW  
    POPULATION      AREA (sq km)  
     within Noise Limited Contour      1382837      37360.8  
     not affected by terrain losses      1362889      36441.7  
     lost to NTSC IX      11965      366.8  
     lost to additional IX by ATV      22460      1217.4  
     lost to ATV IX only      23032      1285.9  
     lost to all IX      34425      1584.2

Potential Interfering Stations Included in above Scenario 1

34N AL OZARK	BLCT	20050519ABF	LIC
34N GA ATHENS	BLCT	19960614KH	LIC
34N MS MAGEE	BLCT	20060223AAV	LIC
34A FL PENSACOLA	BLCDT	20060627AAV	LIC
35A MS COLUMBUS	DTVPLN	DTVP0982	PLN

After Analysis

Results for: 34A AL TUSCALOOSA      DTVPLN      DTVP0924      PLN  
     HAAT 662.0 m, ATV ERP 198.0 kW  
    POPULATION      AREA (sq km)  
     within Noise Limited Contour      1382837      37360.8  
     not affected by terrain losses      1362889      36441.7  
     lost to NTSC IX      11965      366.8  
     lost to additional IX by ATV      22467      1221.4  
     lost to ATV IX only      23065      1294.0  
     lost to all IX      34432      1588.3

Potential Interfering Stations Included in above Scenario 1

**Figure 3**  
**Sheet 6 of 12**

34N AL OZARK	BLCT	20050519ABF	LIC
34N GA ATHENS	BLCT	19960614KH	LIC
34N MS MAGEE	BLCT	20060223AAV	LIC
34A FL PENSACOLA	BLCDT	20060627AAV	LIC
35A MS COLUMBUS	DTVPLN	DTVP0982	PLN
34A MS SENATOBIA	USERRECORD01		APP

Percent new IX = 0.0005%

Result key: 2  
 Scenario 2 Affected station 3  
 Before Analysis

Results for: 34A AL TUSCALOOSA      DTVPLN      DTVP0924      PLN  
     HAAT 662.0 m, ATV ERP 198.0 kW  
    POPULATION      AREA (sq km)  
     within Noise Limited Contour      1382837      37360.8  
     not affected by terrain losses      1362889      36441.7  
     lost to NTSC IX      11753      338.6  
     lost to additional IX by ATV      22641      1233.5  
     lost to ATV IX only      23032      1285.9  
     lost to all IX      34394      1572.2

Potential Interfering Stations Included in above Scenario 2

34N AL OZARK	BLCT	20050519ABF	LIC
34N GA ATHENS	BLCT	19960614KH	LIC
34N MS MAGEE	BPCT	19960920LS	APP
34A FL PENSACOLA	BLCDT	20060627AAV	LIC
35A MS COLUMBUS	DTVPLN	DTVP0982	PLN

After Analysis

Results for: 34A AL TUSCALOOSA      DTVPLN      DTVP0924      PLN  
     HAAT 662.0 m, ATV ERP 198.0 kW  
    POPULATION      AREA (sq km)  
     within Noise Limited Contour      1382837      37360.8  
     not affected by terrain losses      1362889      36441.7  
     lost to NTSC IX      11753      338.6  
     lost to additional IX by ATV      22674      1241.6  
     lost to ATV IX only      23065      1294.0  
     lost to all IX      34427      1580.2

Potential Interfering Stations Included in above Scenario 2

34N AL OZARK	BLCT	20050519ABF	LIC
34N GA ATHENS	BLCT	19960614KH	LIC
34N MS MAGEE	BPCT	19960920LS	APP
34A FL PENSACOLA	BLCDT	20060627AAV	LIC
35A MS COLUMBUS	DTVPLN	DTVP0982	PLN
34A MS SENATOBIA	USERRECORD01		APP

Percent new IX = 0.0025%

Worst case new IX 0.0025% Scenario 2

#####

Analysis of Interference to Affected Station 4

NTSC Baseline Analysis

Channel	Call	City/State	Application Ref. No.
---------	------	------------	----------------------



**Figure 3**  
**Sheet 7 of 12**

34	NEW	EUREKA SPRINGS AR	DTVPLN	-NPLN1467	
Stations Potentially Affecting This Station					
Chan	Call	City/State	Dist(km)	Status	Application Ref. No.
26	KOZJ	JOPLIN MO	111.3	PLN	DTVPLN -NPLN1280
27	KPOM-DT	FORT SMITH AR	72.9	PLN	DTVPLN -DTVP0662
27	KDEBT	SPRINGFIELD MO	124.5	PLN	DTVPLN -NPLN1308
30	KOAM-DT	PITTSBURG KS	133.3	PLN	DTVPLN -DTVP0787
31	NEW	HARRISON AR	48.7	PLN	DTVPLN -NPLN1399
33	KSPR	SPRINGFIELD MO	125.9	PLN	DTVPLN -NPLN1452
34	KMSS-DT	SHREVEPORT LA	403.2	PLN	DTVPLN -DTVP0939
34	WDAF-DT	KANSAS CITY MO	317.7	PLN	DTVPLN -DTVP0942
34	KOCB	OKLAHOMA CITY OK	344.9	PLN	DTVPLN -NPLN1480
35	KEMV-DT	MOUNTAIN VIEW AR	142.5	PLN	DTVPLN -DTVP0962
35	KRSCTV	CLAREMORE OK	165.9	PLN	DTVPLN -NPLN1503
41	KTFO	TULSA OK	172.8	PLN	DTVPLN -NPLN1608

Results for: 34N AR EUREKA SPRINGS			DTVPLN	NPLN1467	PLN
			POPULATION	AREA (sq km)	
		within Noise Limited Contour	141118	5149.2	
		not affected by terrain losses	118146	4490.6	
		lost to NTSC IX	2119	223.5	
		lost to additional IX by ATV	950	35.9	
		lost to all IX	3069	259.5	

Analysis of current record

Channel	Call	City/State	Application Ref. No.
34	KPBI	EUREKA SPRINGS AR	BLCT -20050124AFT

Stations Potentially Affecting This Station

Chan	Call	City/State	Dist(km)	Status	Application Ref. No.
26	KOZJ	JOPLIN MO	90.4	LIC	BLCT -20060427ABK
27	KFTA-TV	FORT SMITH AR	79.7	APP	BMPCDT -20040803ABV
27	KPOM-DT	FORT SMITH AR	79.7	PLN	DTVPLN -DTVP0662
27	KFTA-TV	FORT SMITH AR	79.7	CP	BPCTD -19991028AEE
27	KSFX-TV	SPRINGFIELD MO	126.7	LIC	BLCT -20050909AFT
30	KOAM-DT	PITTSBURG KS	112.2	PLN	DTVPLN -DTVP0787
31	KWB	HARRISON AR	86.0	LIC	BLCT -20010102AAZ
33	KSPR	SPRINGFIELD MO	126.7	LIC	BLCT -19861020KF
34	WDAF-DT	KANSAS CITY MO	301.1	PLN	DTVPLN -DTVP0942
34	961001KI	SENATOBIA MS	396.6	CP	BPET -19961001KI
34	KOCB	OKLAHOMA CITY OK	332.0	LIC	BLCT -20060206AAR
35	KEMV-DT	MOUNTAIN VIEW AR	163.5	PLN	DTVPLN -DTVP0962
35	KRSC-TV	CLAREMORE OK	148.0	CP	BPET -20060406AAL
41	KMYT-TV	TULSA OK	158.8	LIC	BLCT -19810323KF
49	KRBK	OSAGE BEACH MO	189.5	CP	BNPCT -20060421ACD
34	961001KI	SENATOBIA MS	396.6	APP	USERRECORD-01

Proposal causes no interference

#####

Analysis of Interference to Affected Station 5

DTV Baseline Analysis

Channel	Call	City/State	Application Ref. No.
34	WSIL-DT	HARRISBURG IL	DTVPLN -DTVP0936

Stations Potentially Affecting This Station

Chan	Call	City/State	Dist(km)	Status	Application Ref. No.
33	WBKO-DT	BOWLING GREEN KY	223.8	PLN	DTVPLN -DTVP0902

**Figure 3**  
**Sheet 8 of 12**

34	WQEC-DT	QUINCY IL	337.2	PLN	DTVPLN -DTVP0937
34	WGRB	CAMPBELLSVILLE KY	318.5	PLN	DTVPLN -NPLN1475
34	WCET-DT	CINCINNATI OH	414.7	PLN	DTVPLN -DTVP0950
35	WKMATV	MADISONVILLE KY	128.9	PLN	DTVPLN -NPLN1497
35	KSDK-DT	ST. LOUIS MO	166.1	PLN	DTVPLN -DTVP0981

Results for: 34A IL HARRISBURG			DTVPLN	DTVP0936	PLN
		HAAT 302.0 m, ATV ERP 1000.0 kW			

	POPULATION	AREA (sq km)
within Noise Limited Contour	770478	35137.3
not affected by terrain losses	763572	34706.6
lost to NTSC IX	3481	205.2
lost to additional IX by ATV	783	84.5
lost to ATV IX only	783	84.5
lost to all IX	4264	289.8

NTSC Baseline Analysis

Channel	Call	City/State	Application Ref. No.
03	WSILTV	HARRISBURG IL	DTVPLN -NPLN0226

Stations Potentially Affecting This Station

Chan	Call	City/State	Dist(km)	Status	Application Ref. No.
02	WTWO	TERRE HAUTE IN	222.3	PLN	DTVPLN -NPLN0166
02	KTVITV	ST. LOUIS MO	166.6	PLN	DTVPLN -NPLN0175
03	WCIA	CHAMPAIGN IL	279.6	PLN	DTVPLN -NPLN0225
03	WAVE	LOUISVILLE KY	316.0	PLN	DTVPLN -NPLN0229
03	KYTV	SPRINGFIELD MO	362.7	PLN	DTVPLN -NPLN0236
03	WRCBT	CHATTANOOGA TN	419.0	PLN	DTVPLN -NPLN0258
03	WREGTV	MEMPHIS TN	283.6	PLN	DTVPLN -NPLN0259
04	KMOV	ST. LOUIS MO	161.2	PLN	DTVPLN -NPLN0297

Results for: 3N IL HARRISBURG			DTVPLN	NPLN0226	PLN
			POPULATION	AREA (sq km)	
		within Noise Limited Contour	770478	35137.3	
		not affected by terrain losses	758680	34223.7	
		lost to NTSC IX	188753	9602.3	
		lost to additional IX by ATV	0	0.0	
		lost to all IX	188753	9602.3	

Analysis of current record

Channel	Call	City/State	Application Ref. No.
34	WSIL-DT	HARRISBURG IL	DTVPLN -DTVP0936

Stations Potentially Affecting This Station

Chan	Call	City/State	Dist(km)	Status	Application Ref. No.
33	WBKO-DT	BOWLING GREEN KY	223.8	PLN	DTVPLN -DTVP0902
34	WQEC-DT	QUINCY IL	337.2	PLN	DTVPLN -DTVP0937
34	WBKI-TV	CAMPBELLSVILLE KY	302.0	LIC	BLCT -20001109ABF
34	WCET-DT	CINCINNATI OH	414.7	PLN	DTVPLN -DTVP0950
34	WCET	CINCINNATI OH	414.6	LIC	BLEDT -20061031AAR
35	WKMA-TV	MADISONVILLE KY	128.9	LIC	BLET -19840420KR
35	KSDK-DT	ST. LOUIS MO	166.1	PLN	DTVPLN -DTVP0981
34	961001KI	SENATOBIA MS	323.3	APP	USERRECORD-01

Proposal causes no interference

#####

Analysis of Interference to Affected Station 6

Analysis of current record

Channel	Call	City/State	Application Ref. No.
---------	------	------------	----------------------

**Figure 3**  
**Sheet 9 of 12**

34	WRBJ	MAGEE MS	BLCT	-20060223AAV
Stations Potentially Affecting This Station				
Chan	Call	City/State	Dist(km)	Status Application Ref. No.
26	WMDN	MERIDIAN MS	83.7	CP MOD BMPCDT -20070521ACF
26	WMDN-DT	MERIDIAN MS	83.2	PLN DTVPLN -DTVP0643
27	WLOV-TV	WEST POINT MS	190.8	LIC BLCT -19830608KE
31	WGBC-DT	MERIDIAN MS	84.1	PLN DTVPLN -DTVP0830
31	WGBC	MERIDIAN MS	83.7	CP MOD BMPCDT -20070522AAR
34	WDFX-TV	OZARK AL	385.8	LIC BLCT -20050519ABF
34	WCFT-DT	TUSCALOOSA AL	248.8	PLN DTVPLN -DTVP0924
34	WHBR-DT	PENSACOLA FL	245.2	PLN DTVPLN -DTVP0932
34	WHBR	PENSACOLA FL	246.4	LIC BLCDT -20060627AAV
34	WVLA-DT	BATON ROUGE LA	258.5	PLN DTVPLN -DTVP0938
34	WVLA	BATON ROUGE LA	258.5	LIC BLCDT -20051221AOO
34	961001KI	SENATOBIA MS	306.4	CP BPET -19961001KI
35	WCBT-DT	COLUMBUS MS	191.7	PLN DTVPLN -DTVP0982
35	WUFY	VICKSBURG MS	103.1	LIC BLCT -20031030AAL
38	WMAB-DT	MISSISSIPPI STATE MS	141.7	PLN DTVPLN -DTVP1053
41	WIIQ	DEMOPOLIS AL	160.2	LIC BLET -20040120ACY
41	WDBD-DT	JACKSON MS	81.6	PLN DTVPLN -DTVP1166
41	WDBD	JACKSON MS	79.2	CP BPCDT -19980825KH
48	WNTZ	NATCHEZ MS	131.3	CP BPCT -20011115AAF
49	WTOK-DT	MERIDIAN MS	83.7	PLN DTVPLN -DTVP1422
49	WNTZ	NATCHEZ MS	131.3	APP BMPCDT -20011116ABJ
49	960920LX	TUPELO MS	220.8	APP BPCT -19960920LX
49	NEW	TUPELO MS	220.8	LIC BPRM -20000717AER
34	961001KI	SENATOBIA MS	306.4	APP USERRECORD-01
Proposal causes no interference				

#####

Analysis of Interference to Affected Station 7

Analysis of current record

Channel	Call	City/State	Application Ref. No.
34	960920LS	MAGEE MS	BPCT -19960920LS

Stations Potentially Affecting This Station

Chan	Call	City/State	Dist(km)	Status Application Ref. No.
26	WMDN	MERIDIAN MS	123.4	CP MOD BMPCDT -20070521ACF
26	WMDN-DT	MERIDIAN MS	122.5	PLN DTVPLN -DTVP0643
27	WLPB-TV	BATON ROUGE LA	206.0	LIC BLET -19910401KE
31	WGBC-DT	MERIDIAN MS	123.7	PLN DTVPLN -DTVP0830
31	WGBC	MERIDIAN MS	123.4	CP MOD BMPCDT -20070522AAR
34	WCFT-DT	TUSCALOOSA AL	292.4	PLN DTVPLN -DTVP0924
34	WHBR-DT	PENSACOLA FL	248.9	PLN DTVPLN -DTVP0932
34	WHBR	PENSACOLA FL	249.9	LIC BLCDT -20060627AAV
34	WVLA-DT	BATON ROUGE LA	214.3	PLN DTVPLN -DTVP0938
34	WVLA	BATON ROUGE LA	214.4	LIC BLCDT -20051221AOO
34	KMSS-TV	SHREVEPORT LA	394.1	LIC BLCDT -20050705AAB
34	KMSS-DT	SHREVEPORT LA	394.2	PLN DTVPLN -DTVP0939
34	961001KI	SENATOBIA MS	336.7	CP BPET -19961001KI
35	WUFY	VICKSBURG MS	90.5	LIC BLCT -20031030AAL
41	WIIQ	DEMOPOLIS AL	196.9	LIC BLET -20040120ACY
41	WDBD-DT	JACKSON MS	69.0	PLN DTVPLN -DTVP1166
41	WDBD	JACKSON MS	65.5	CP BPCDT -19980825KH
48	WXXV-DT	GULFPORT MS	142.0	PLN DTVPLN -DTVP1395
48	WXXV-TV	GULFPORT MS	142.0	CP BPCDT -19991014ABJ
48	WNTZ	NATCHEZ MS	99.3	CP BPCT -20011115AAF
49	WPXL	NEW ORLEANS LA	212.4	LIC BLCT -20040412ACY

**Figure 3**  
**Sheet 10 of 12**

49	WTOK-DT	MERIDIAN MS	123.4	PLN DTVPLN -DTVP1422
49	WNTZ	NATCHEZ MS	99.3	APP BMPCDT -20011116ABJ
34	961001KI	SENATOBIA MS	336.7	APP USERRECORD-01
Proposal causes no interference				

#####

Analysis of Interference to Affected Station 8

DTV Baseline Analysis

Channel	Call	City/State	Application Ref. No.
35	WCBT-DT	COLUMBUS MS	DTVPLN -DTVP0982

Stations Potentially Affecting This Station

Chan	Call	City/State	Dist(km)	Status Application Ref. No.
34	WCFT-DT	TUSCALOOSA AL	137.3	PLN DTVPLN -DTVP0924
35	KEMV-DT	MOUNTAIN VIEW AR	386.6	PLN DTVPLN -DTVP0962
35	WFGX	FORT WALTON BEACH FL	425.7	PLN DTVPLN -NPLN1491
35	WLTZ-DT	COLUMBUS GA	398.5	PLN DTVPLN -DTVP0971
35	WKMATV	MADISONVILLE KY	401.7	PLN DTVPLN -NPLN1497
35	WTVC-DT	CHATTANOOGA TN	361.9	PLN DTVPLN -DTVP0993
36	WABM-DT	BIRMINGHAM AL	190.3	PLN DTVPLN -DTVP1000
36	WFIQ	FLORENCE AL	136.4	PLN DTVPLN -NPLN1511
36	WMAV-DT	OXFORD MS	97.0	PLN DTVPLN -DTVP1023

Results for: 35A MS COLUMBUS	DTVPLN	DTVP0982	PLN
HAAT 610.0 m, ATV ERP 1000.0 kW			

	POPULATION	AREA (sq km)
within Noise Limited Contour	790092	52027.8
not affected by terrain losses	774803	50765.9
lost to NTSC IX	628	88.4
lost to additional IX by ATV	37257	2692.4
lost to ATV IX only	37278	2700.4
lost to all IX	37885	2780.8

NTSC Baseline Analysis

Channel	Call	City/State	Application Ref. No.
04	WCBITV	COLUMBUS MS	DTVPLN -NPLN0298

Stations Potentially Affecting This Station

Chan	Call	City/State	Dist(km)	Status Application Ref. No.
03	WLBT-TV	JACKSON MS	221.2	PLN DTVPLN -NPLN0237
03	WREGTV	MEMPHIS TN	181.4	PLN DTVPLN -NPLN0259
04	KARKTV	LITTLE ROCK AR	352.4	PLN DTVPLN -NPLN0275
04	WSMVTV	NASHVILLE TN	322.7	PLN DTVPLN -NPLN0319

Results for: 4N MS COLUMBUS	DTVPLN	NPLN0298	PLN
	POPULATION	AREA (sq km)	

within Noise Limited Contour	790092	52027.8
not affected by terrain losses	738567	49295.2
lost to NTSC IX	86727	6473.8
lost to additional IX by ATV	0	0.0
lost to all IX	86727	6473.8

Analysis of current record

Channel	Call	City/State	Application Ref. No.
35	WCBT-DT	COLUMBUS MS	DTVPLN -DTVP0982

Stations Potentially Affecting This Station

Chan	Call	City/State	Dist(km)	Status Application Ref. No.
------	------	------------	----------	-----------------------------

**Figure 3**  
**Sheet 11 of 12**

34	WCFT-DT	TUSCALOOSA AL	137.3	PLN	DTVPLN	-DTVP0924
34	WRBJ	MAGEE MS	191.7	LIC	BLCT	-20060223AAV
35	KEMV-DT	MOUNTAIN VIEW AR	386.6	PLN	DTVPLN	-DTVP0962
35	WFGX	FORT WALTON BEACH FL	425.7	LIC	BLCT	-20030304AAC
35	WLTZ-DT	COLUMBUS GA	398.5	PLN	DTVPLN	-DTVP0971
35	WKMA-TV	MADISONVILLE KY	401.7	LIC	BLET	-19840420KR
35	WUFY	VICKSBURG MS	226.6	LIC	BLCT	-20031030AAL
35	WTVC-DT	CHATTANOOGA TN	361.9	PLN	DTVPLN	-DTVP0993
36	WABM-DT	BIRMINGHAM AL	190.3	PLN	DTVPLN	-DTVP1000
36	WABM	BIRMINGHAM AL	194.0	LIC	BLCDDT	-20060406AAJ
36	WFIQ	FLORENCE AL	136.4	LIC	BLET	-19960129KG
36	WMAV-DT	OXFORD MS	97.0	PLN	DTVPLN	-DTVP1023
36	WMAV-TV	OXFORD MS	97.0	CP	BPEDT	-20000110AAB
34	961001KI	SENATOBIA MS	160.2	APP	USERRECORD-01	

Proposal causes no interference

#####

Analysis of Interference to Affected Station 9

Analysis of current record

Channel	Call	City/State	Application Ref. No.
42	W42BY	MEMPHIS TN	BLTTTL -19980629JE

Stations Potentially Affecting This Station

Chan	Call	City/State	Dist(km)	Status	Application Ref. No.
39	WMTU-DT	JACKSON TN	112.0	PLN	DTVPLN -DTVP1105
41	WBUY-DT	HOLLY SPRINGS MS	37.4	PLN	DTVPLN -DTVP1165
41	WBUY-TV	HOLLY SPRINGS MS	37.4	LIC	BLCDDT -20060320AEN
42	WIAT	BIRMINGHAM AL	350.5	LIC	BLCT -19961001UP
42	KWBF	LITTLE ROCK AR	225.8	LIC	BLCT -19980415KE
42	WKMA-DT	MADISONVILLE KY	322.0	PLN	DTVPLN -DTVP1195
42	960920IZ	NASHVILLE TN	308.1	APP	BPET -19960920IZ
49	KVTJ	JONESBORO AR	66.6	CP	BPCT -19990930AAS
49	KVTJ-DT	JONESBORO AR	113.1	PLN	DTVPLN -DTVP1409
56	961211KE	MEMPHIS TN	22.9	APP	BPET -19961211KE
56	961211KK	MEMPHIS TN	38.1	APP	BPET -19961211KK
56	970331LE	MEMPHIS TN	38.1	APP	BPET -19970331LE
56	NEW	MEMPHIS TN	21.0	CP	BPEDT -19961213KH
56	961118KJ	MEMPHIS TN	22.9	APP	BPET -19961118KJ
34	961001KI	SENATOBIA MS	32.7	APP	USERRECORD-01

Proposal causes no interference

#####

Analysis of Interference to Affected Station 10

Analysis of current record

Channel	Call	City/State	Application Ref. No.
34	961001KI	SENATOBIA MS	USERRECORD-01

Stations Potentially Affecting This Station

Chan	Call	City/State	Dist(km)	Status	Application Ref. No.
34	WCFT-DT	TUSCALOOSA AL	281.6	PLN	DTVPLN -DTVP0924
34	KPBI	EUREKA SPRINGS AR	396.6	LIC	BLCT -20050124AFT
34	WSIL-DT	HARRISBURG IL	323.3	PLN	DTVPLN -DTVP0936
34	WRBJ	MAGEE MS	306.4	LIC	BLCT -20060223AAV
34	960920LS	MAGEE MS	336.7	APP	BPCT -19960920LS
35	WCBI-DT	COLUMBUS MS	160.2	PLN	DTVPLN -DTVP0982

**Figure 3**  
**Sheet 12 of 12**

Total scenarios = 2

Result key: 3  
Scenario 1 Affected station 10  
Before Analysis

Results for: 34A MS SENATOBIA USERRECORD01 APP  
HAAT 167.0 m, ATV ERP 19.8 kW

	POPULATION	AREA (sq km)
within Noise Limited Contour	1029138	11529.1
not affected by terrain losses	1029092	11497.0
lost to NTSC IX	94	32.1
lost to additional IX by ATV	149	24.1
lost to ATV IX only	243	52.2
lost to all IX	243	56.2

Potential Interfering Stations Included in above Scenario 1

34N MS MAGEE	BLCT	20060223AAV	LIC
34A AL TUSCALOOSA	DTVPLN	DTVP0924	PLN

Result key: 4  
Scenario 2 Affected station 10  
Before Analysis

Results for: 34A MS SENATOBIA USERRECORD01 APP  
HAAT 167.0 m, ATV ERP 19.8 kW

	POPULATION	AREA (sq km)
within Noise Limited Contour	1029138	11529.1
not affected by terrain losses	1029092	11497.0
lost to NTSC IX	33	4.0
lost to additional IX by ATV	210	48.2
lost to ATV IX only	243	52.2
lost to all IX	243	52.2

Potential Interfering Stations Included in above Scenario 2

34N MS MAGEE	BPCT	19960920LS	APP
34A AL TUSCALOOSA	DTVPLN	DTVP0924	PLN

#####

FINISHED FINISHED FINISHED FINISHED FINISHED FINISHED

**Figure 4**  
**Sheet 1 of 4**

Census data selected 2000

Post Transition Data Base Selected  
/export/home/cdbs/tvdb.sff\_G  
TV INTERFERENCE and SPACING ANALYSIS PROGRAM

Date: 03-10-2008 Time: 14:35:45

Record Selected for Analysis

961001KI USERRECORD-01 SENATOBIA MS US  
Channel 34 ERP 19.8 kW HAAT 167. m RCAMSL 00257 m  
Latitude 034-51-05 Longitude 0090-00-19  
Status APP Zone 2 Border  
Last update Cutoff date Docket  
Comments  
Applicant

Cell Size for Service Analysis 2.0 km/side

Distance Increments for Longley-Rice Analysis 1.00 km

Facility meets maximum height/power limits

Azimuth (Deg)	ERP (kW)	HAAT (m)	41.0 dBu F(50,90) (km)
0.0	19.800	164.3	60.1
45.0	19.800	147.2	58.9
90.0	19.800	163.1	60.0
135.0	19.800	162.1	60.0
180.0	19.800	170.0	60.5
225.0	19.800	182.2	61.4
270.0	19.800	177.2	61.0
315.0	19.800	170.8	60.6

Evaluation toward Class A Stations

No Spacing violations or contour overlap to Class A stations

Class A Evaluation Complete

Proposed facility OK to FCC Monitoring Stations

Proposed facility OK toward West Virginia quite zone

Proposed facility OK toward Table Mountain

Proposed facility is beyond the Canadian coordination distance

Proposed facility is beyond the Mexican coordination distance

Proposed station is OK toward AM broadcast stations

\*\*\*\*\*

**Figure 4**  
**Sheet 2 of 4**

Start of Interference Analysis

Channel	Call	City/State	ARN
34	961001KI	SENATOBIA MS	USERRECORD01

Stations Potentially Affected by Proposed Station

Chan	Call	City/State	Dist(km)	Status	Application Ref. No.
34	KWFT	EUREKA SPRINGS AR	399.6	CP	BPCDT -20010927AAQ
34	WSIL-TV	HARRISBURG IL	323.4	CP	BPCDT -19991019ABM
34	WRBJ	MAGEE MS	306.4	CP	BNPCT -20020320ACK
35	WCBI-TV	COLUMBUS MS	160.2	CP	BDTV -00000234

\*\*\*\*\*

Analysis of Interference to Affected Station 1

Analysis of current record

Channel	Call	City/State	Application Ref. No.
34	KWFT	EUREKA SPRINGS AR	BPCDT -20010927AAQ

Stations Potentially Affecting This Station

Chan	Call	City/State	Dist(km)	Status	Application Ref. No.
34	KMSS-TV	SHREVEPORT LA	419.7	CP	BPCDT -19991022ABL
34	WDAF-TV	KANSAS CITY MO	297.5	CP	BDTV -00000230
34	961001KI	SENATOBIA MS	399.6	APP	USERRECORD-01

Proposal causes no interference

\*\*\*\*\*

Analysis of Interference to Affected Station 2

Analysis of current record

Channel	Call	City/State	Application Ref. No.
34	WSIL-TV	HARRISBURG IL	BPCDT -19991019ABM

Stations Potentially Affecting This Station

Chan	Call	City/State	Dist(km)	Status	Application Ref. No.
34	WQEC	QUINCY IL	337.0	LIC	BLEDT -20040715ADL
34	WCET	CINCINNATI OH	414.6	CP	BPEDT -20000420ABE
35	KSDK	ST. LOUIS MO	166.0	CP	BDTV -00000237
34	961001KI	SENATOBIA MS	323.4	APP	USERRECORD-01

Proposal causes no interference

\*\*\*\*\*

Analysis of Interference to Affected Station 3

Analysis of current record

Channel	Call	City/State	Application Ref. No.
34	WRBJ	MAGEE MS	BNPCT -20020320ACK

Stations Potentially Affecting This Station

Chan	Call	City/State	Dist(km)	Status	Application Ref. No.
------	------	------------	----------	--------	----------------------

34	WHBR	PENSACOLA FL	245.0	CP	BPCDT	-19991028AFO
34	WVLA	BATON ROUGE LA	258.7	CP	BPCDT	-19991008AAZ
34	KMSS-TV	SHREVEPORT LA	416.3	CP	BPCDT	-19991022ABL
35	WCBI-TV	COLUMBUS MS	191.5	CP	BDTV	-00000234
35	WUFX	VICKSBURG MS	103.5	CP	BFRCT	-20050812ACC
34	961001KI	SENATOBIA MS	306.4	APP	USERRECORD-01	

Proposal causes no interference

#####

## Analysis of Interference to Affected Station 4

## Analysis of current record

Channel	Call	City/State	Application	Ref. No.
35	WCBI-TV	COLUMBUS MS	BDTV	-00000234

## Stations Potentially Affecting This Station

Chan	Call	City/State	Dist(km)	Status	Application	Ref. No.
34	WRBJ	MAGEE MS	191.5	CP	BNPCT	-20020320ACK
35	WLTZ	COLUMBUS GA	398.5	CP	BDTV	-00000240
35	WUFX	VICKSBURG MS	226.6	CP	BFRCT	-20050812ACC
36	WABM	BIRMINGHAM AL	194.0	CP MOD	BMPCT	-20041104AKE
36	WMAV-TV	OXFORD MS	97.0	CP	BPEDT	-20000110AAB
34	961001KI	SENATOBIA MS	160.2	APP	USERRECORD-01	

Proposal causes no interference

#####

## Analysis of Interference to Affected Station 5

## Analysis of current record

Channel	Call	City/State	Application	Ref. No.
34	961001KI	SENATOBIA MS	USERRECORD-01	

## Stations Potentially Affecting This Station

Chan	Call	City/State	Dist(km)	Status	Application	Ref. No.
34	KWFT	EUREKA SPRINGS AR	399.6	CP	BPCT	-20010927AAQ
34	WSIL-TV	HARRISBURG IL	323.4	CP	BPCDT	-19991019ABM
34	WRBJ	MAGEE MS	306.4	CP	BNPCT	-20020320ACK
35	WCBI-TV	COLUMBUS MS	160.2	CP	BDTV	-00000234

Total scenarios = 1

Result key: 1  
 Scenario 1 Affected station 5  
 Before Analysis

Results for: 34A MS SENATOBIA USERRECORD01 APP

HAAT 167.0 m, ATV ERP 19.8 kW	POPULATION	AREA (sq km)
within Noise Limited Contour	1155701	11525.1
not affected by terrain losses	1155596	11501.0
lost to NTSC IX	0	0.0
lost to additional IX by ATV	143	8.0
lost to ATV IX only	143	8.0
lost to all IX	143	8.0

Potential Interfering Stations Included in above Scenario 1

# APPENDIX

## VERTICAL ANTENNA PATTERN

Date

10 Mar 2008

Call Letters

Channel 34

Location

Customer

Antenna Type

TFU-30DSC 03

## ELEVATION PATTERN

RMS Gain at Main Lobe

25.5 (14.07 dB)

Beam Tilt

0.50 Degrees

RMS Gain at Horizontal

21.0 (13.22 dB)

Frequency

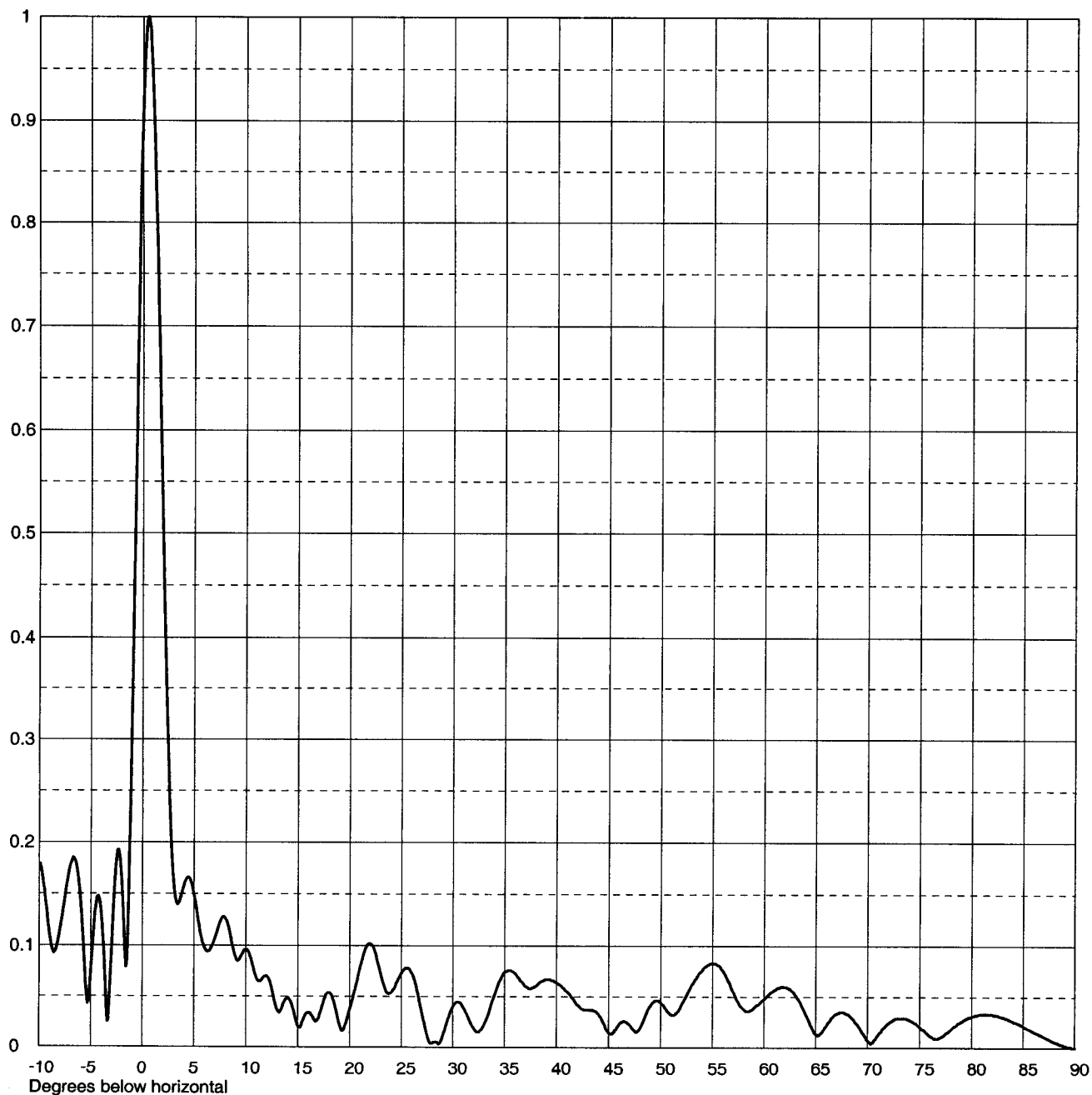
593.00 MHz

Calculated / Measured

Calculated

Drawing #

30Q25505-90



Remarks:



Date **10 Mar 2008**  
 Call Letters  
 Location  
 Customer  
 Antenna Type **TFU-30DSC 03**

Channel **34**

## TABULATION OF ELEVATION PATTERN

Elevation Pattern Drawing # **30Q25505-90**

Angle	Field	Angle	Field	Angle	Field	Angle	Field	Angle	Field	Angle	Field
-10.0	0.183	2.4	0.313	10.6	0.083	30.5	0.045	51.0	0.032	71.5	0.019
-9.5	0.153	2.6	0.248	10.8	0.075	31.0	0.039	51.5	0.034	72.0	0.024
-9.0	0.110	2.8	0.199	11.0	0.068	31.5	0.029	52.0	0.042	72.5	0.028
-8.5	0.094	3.0	0.165	11.5	0.066	32.0	0.019	52.5	0.052	73.0	0.029
-8.0	0.116	3.2	0.146	12.0	0.070	32.5	0.015	53.0	0.062	73.5	0.029
-7.5	0.148	3.4	0.140	12.5	0.057	33.0	0.022	53.5	0.070	74.0	0.027
-7.0	0.177	3.6	0.143	13.0	0.037	33.5	0.035	54.0	0.076	74.5	0.024
-6.5	0.182	3.8	0.150	13.5	0.040	34.0	0.051	54.5	0.081	75.0	0.020
-6.0	0.143	4.0	0.157	14.0	0.049	34.5	0.065	55.0	0.083	75.5	0.016
-5.5	0.063	4.2	0.163	14.5	0.039	35.0	0.074	55.5	0.081	76.0	0.011
-5.0	0.076	4.4	0.166	15.0	0.020	35.5	0.076	56.0	0.076	76.5	0.009
-4.5	0.140	4.6	0.164	15.5	0.027	36.0	0.073	56.5	0.066	77.0	0.010
-4.0	0.132	4.8	0.159	16.0	0.034	36.5	0.066	57.0	0.055	77.5	0.014
-3.5	0.043	5.0	0.149	16.5	0.028	37.0	0.060	57.5	0.044	78.0	0.018
-3.0	0.096	5.2	0.138	17.0	0.029	37.5	0.058	58.0	0.038	78.5	0.022
-2.8	0.141	5.4	0.125	17.5	0.047	38.0	0.060	58.5	0.036	79.0	0.026
-2.6	0.175	5.6	0.113	18.0	0.054	38.5	0.065	59.0	0.039	79.5	0.029
-2.4	0.192	5.8	0.104	18.5	0.043	39.0	0.067	59.5	0.043	80.0	0.031
-2.2	0.188	6.0	0.098	19.0	0.022	39.5	0.066	60.0	0.048	80.5	0.032
-2.0	0.163	6.2	0.095	19.5	0.020	40.0	0.064	60.5	0.053	81.0	0.033
-1.8	0.119	6.4	0.095	20.0	0.038	40.5	0.060	61.0	0.057	81.5	0.033
-1.6	0.079	6.6	0.097	20.5	0.057	41.0	0.055	61.5	0.059	82.0	0.033
-1.4	0.118	6.8	0.101	21.0	0.079	41.5	0.049	62.0	0.060	82.5	0.032
-1.2	0.219	7.0	0.107	21.5	0.097	42.0	0.042	62.5	0.058	83.0	0.030
-1.0	0.342	7.2	0.113	22.0	0.102	42.5	0.038	63.0	0.052	83.5	0.028
-0.8	0.472	7.4	0.120	22.5	0.092	43.0	0.037	63.5	0.044	84.0	0.026
-0.6	0.601	7.6	0.125	23.0	0.072	43.5	0.037	64.0	0.033	84.5	0.024
-0.4	0.721	7.8	0.128	23.5	0.055	44.0	0.033	64.5	0.022	85.0	0.021
-0.2	0.825	8.0	0.127	24.0	0.054	44.5	0.024	65.0	0.013	85.5	0.018
0.0	0.908	8.2	0.123	24.5	0.063	45.0	0.014	65.5	0.014	86.0	0.016
0.2	0.966	8.4	0.115	25.0	0.073	45.5	0.015	66.0	0.021	86.5	0.013
0.4	0.996	8.6	0.105	25.5	0.078	46.0	0.023	66.5	0.029	87.0	0.011
0.6	0.997	8.8	0.096	26.0	0.073	46.5	0.026	67.0	0.033	87.5	0.008
0.8	0.971	9.0	0.089	26.5	0.057	47.0	0.022	67.5	0.035	88.0	0.006
1.0	0.921	9.2	0.085	27.0	0.033	47.5	0.016	68.0	0.033	88.5	0.004
1.2	0.851	9.4	0.087	27.5	0.011	48.0	0.019	68.5	0.029	89.0	0.002
1.4	0.766	9.6	0.091	28.0	0.004	48.5	0.031	69.0	0.023	89.5	0.001
1.6	0.672	9.8	0.095	28.5	0.004	49.0	0.041	69.5	0.015	90.0	0.000
1.8	0.575	10.0	0.096	29.0	0.011	49.5	0.046	70.0	0.007		
2.0	0.479	10.2	0.095	29.5	0.027	50.0	0.044	70.5	0.005		
2.2	0.391	10.4	0.090	30.0	0.040	50.5	0.038	71.0	0.012		

Remarks: