

Exhibit 13 A - Compliance with 47 CFR 74.1204 - WMTX 264C Tampa FL



47 C.F.R. 74.1204 Compliance

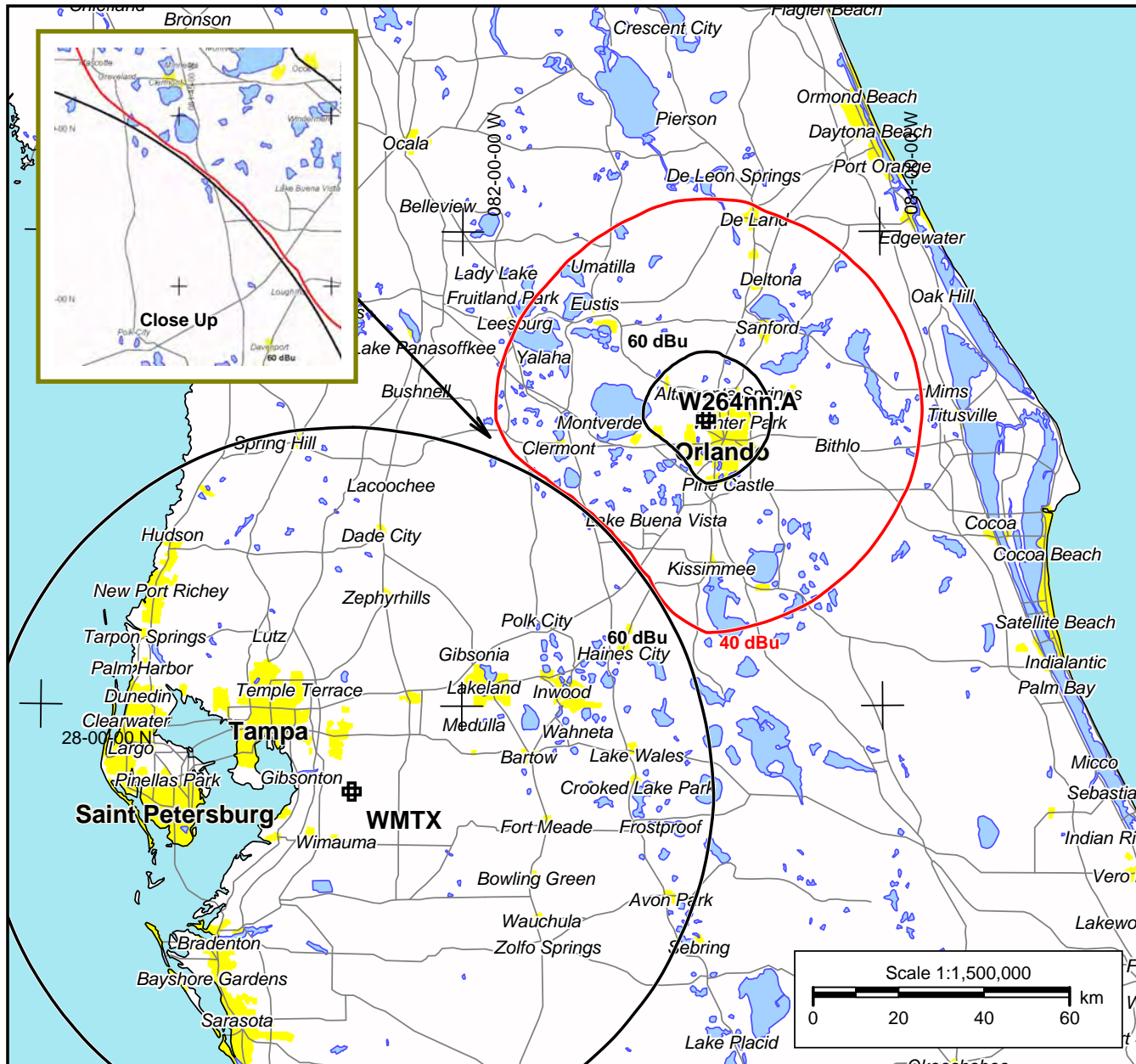
As shown on this map, the proposed fill-in translator interfering 40 dBu contour does not overlap the WMTX protected 60 dBu contour.

WMTX

Tampa, FL
BLH20111005AAC
Channel: 264C
Latitude: 27-49-09.70 N
Longitude: 082-15-38.70 W
ERP: 100.00 kW
HAAT 472.0 m
Frequency: 100.7 MHz
AMSL Height: 491.0 m
Elevation: 24.0 m
Horiz. Pattern: Omni
Study Date: 5/12/2014

W264nn.A

Orlando, FL
BMPFT20140213ABG
Channel: 264D
Latitude: 28-36-20 N
Longitude: 081-25-05 W
ERP: 0.25 kW
HAAT 0.0 m
Frequency: 100.7 MHz
AMSL Height: 160.0 m
Elevation: 29.0 m
Horiz. Pattern: Directional
Study Date: 5/12/2014



Pennsylvania Media Associates

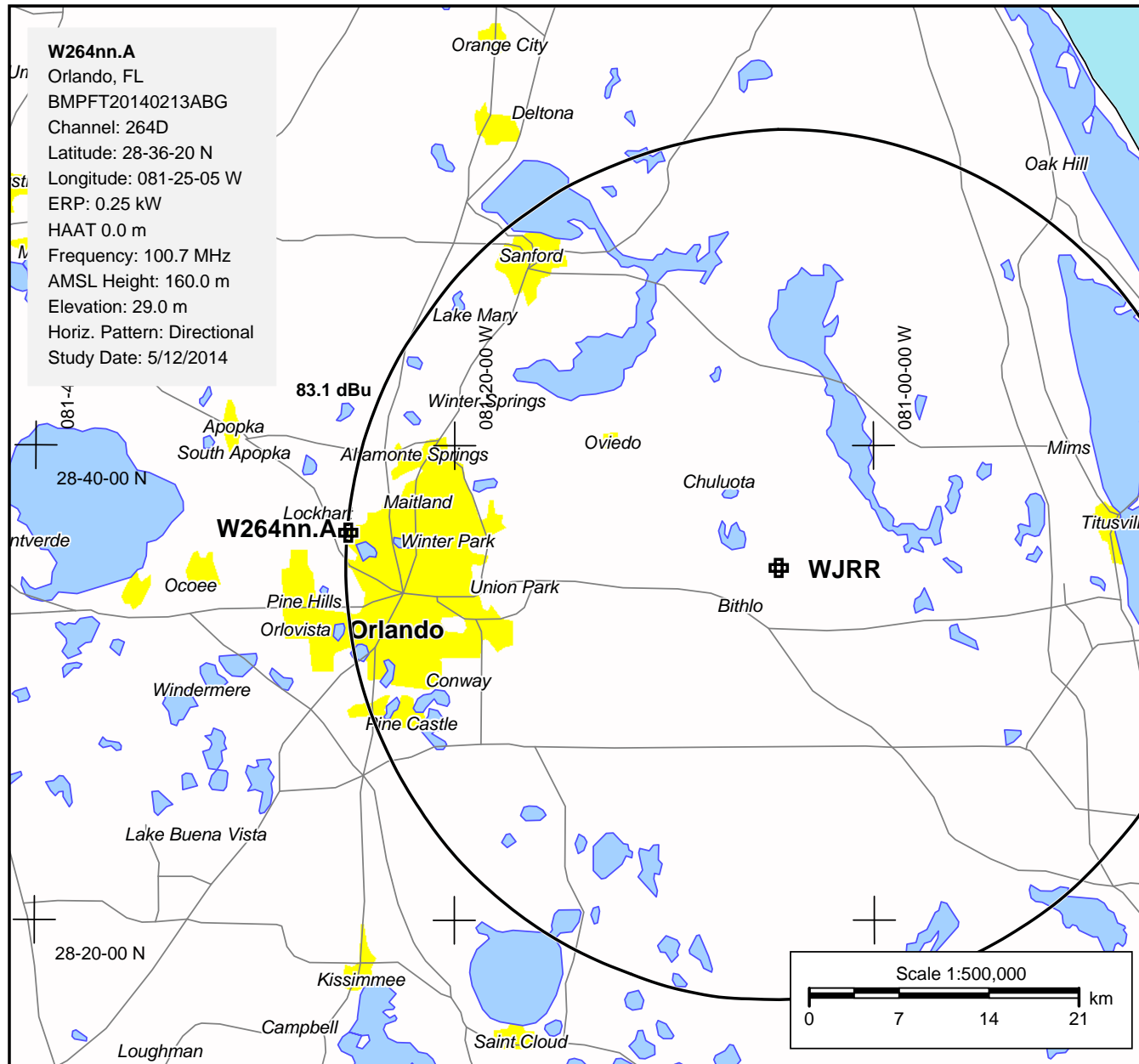
Exhibit 13 B - 47 CFR 74.1204 Compliance - WJRR 266C Cocoa Beach, FL



47 C.F.R. 74.1204 Compliance

As shown on this map, WJRR 266C Cocoa Beach, FL has a signal strength at the proposed translator site of 83.1 dBu. Using the FCC's prescribed 40 dBu Undesired to Desired (U/D) ratio, interference may occur inside the 123.1 dBu contour from the translator. The 123.1 signal level extends no more than 77.3 meters from the translator antenna. The antenna will be 131 meters above the ground. Therefore the proposal complies with FCC Rules.

The next exhibit shows an Aerial View of the translator site. There are no tall buildings nearby.



Pennsylvania Media Associates

Exhibit 13C - Aerial View of Transmitter Site



Exhibit 13 D - 47 CFR 74.1204 Compliance - WRUM 262C Orlando, FL



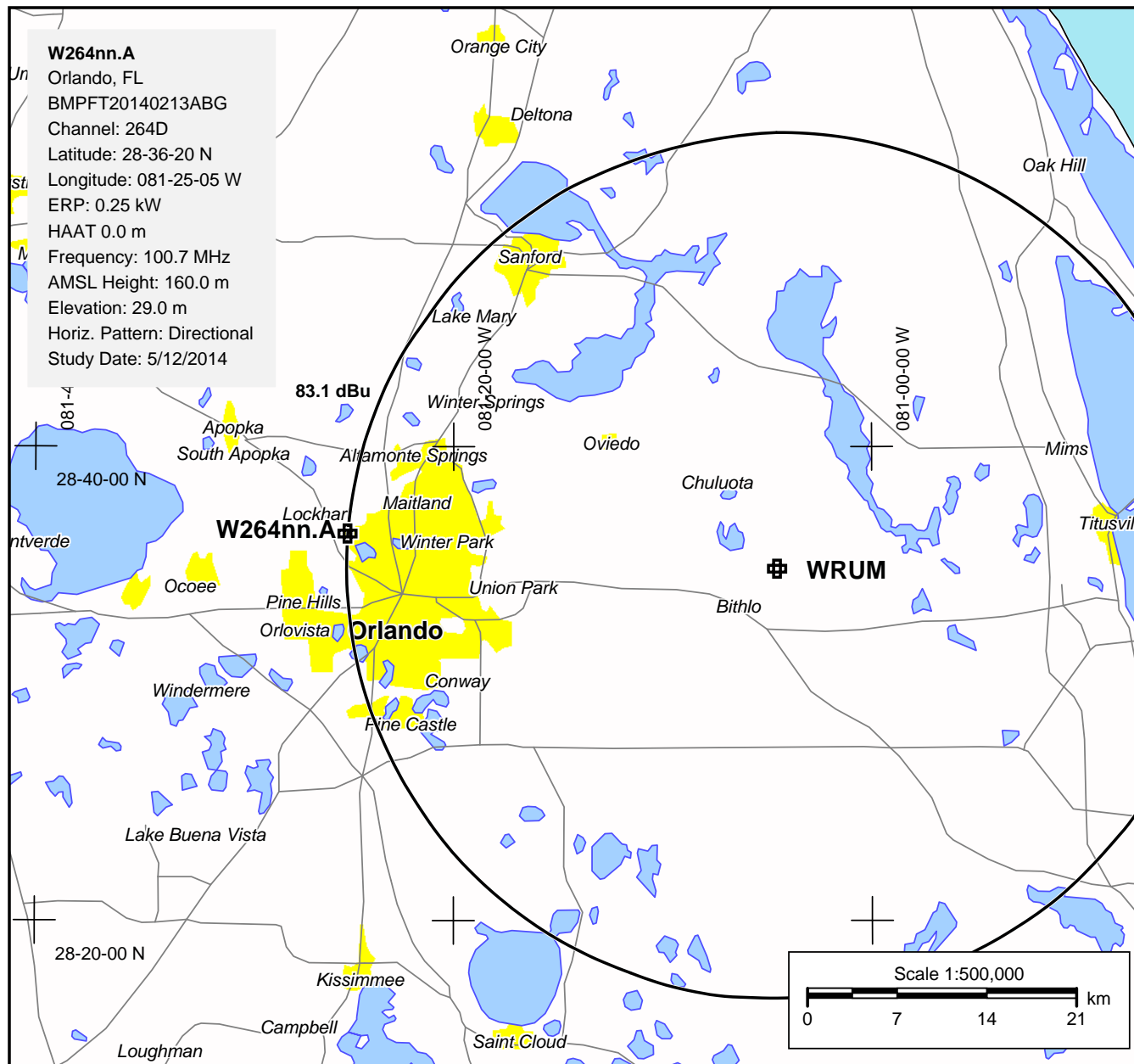
47 C.F.R. 74.1204 Compliance

As shown on this map, WRUM 264C Cocoa Beach, FL has a signal strength at the proposed translator site of 83.1 dBu. Using the FCC's prescribed 40 dBu Undesired to Desired (U/D) ratio, interference may occur inside the 123.1 dBu contour from the translator. The 123.1 signal level extends no more than 77.3 meters from the translator antenna. The antenna will be 131 meters above the ground. Therefore the proposal complies with FCC Rules.

The previous exhibit shows an Aerial View of the translator site. There are no tall buildings nearby.

WRUM

Orlando, FL
BMLH20031010ADF
Channel: 262C
Latitude: 28-34-51 N
Longitude: 081-04-32 W
ERP: 100.00 kW
HAAT 484.0 m
Frequency: 100.3 MHz
AMSL Height: 497.0 m
Elevation: 20.0 m
Horiz. Pattern: Omni
Study Date: 5/12/2014



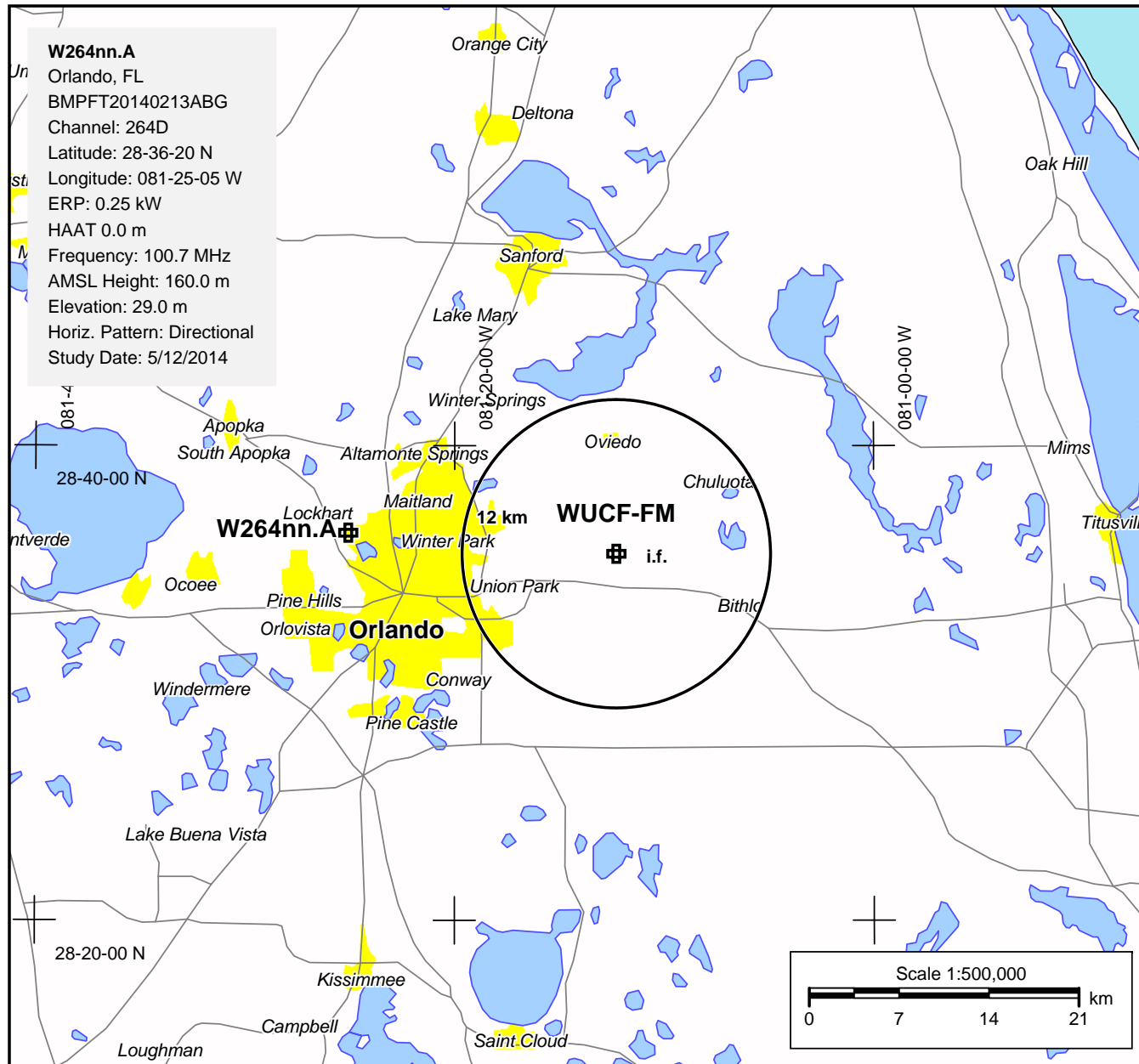
Pennsylvania Media Associates

Exhibit 13 E - 47 CFR 74.1204 Compliance - WUCF 89.9 MHz (i.f.)



47 C.F.R. 74.1204 Compliance

As shown on this map, The translator tower site is located 20.93 km away from WUCF which has an intermediate frequency relationship requiring a separation of 12 km. Thus the translator complies with 47 C.F.R. 74.1204.



Pennsylvania Media Associates