

EXHIBIT 13

Waiver Request of Section 74.1204
K201DP St. George, UT Minor Site Change
92 Watts ERP
Calvary Chapel of Twin Falls, Inc.
May 2013

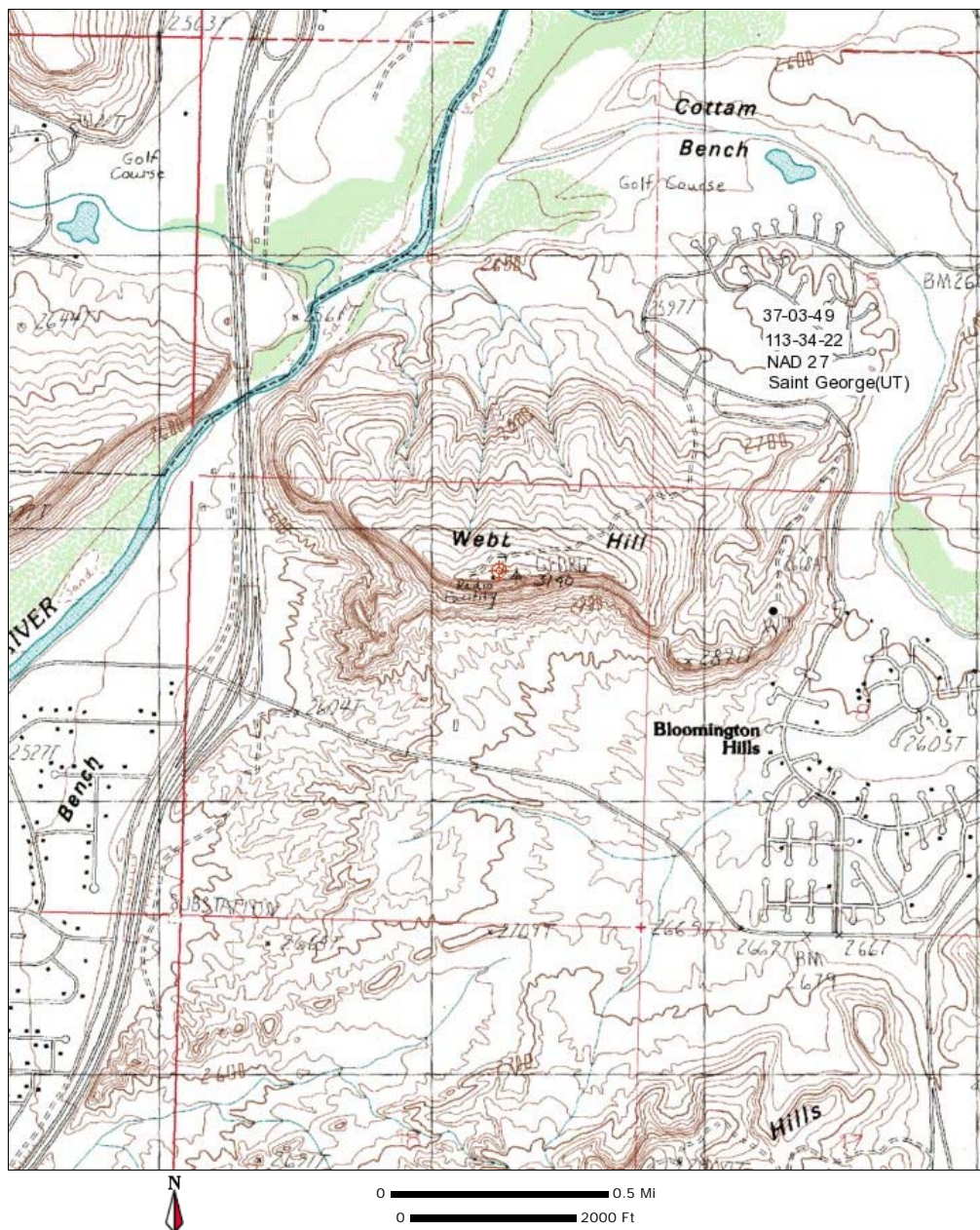
The proposed site is contained entirely inside the service contours of second-adjacent FM Translator K203EY St. George, UT

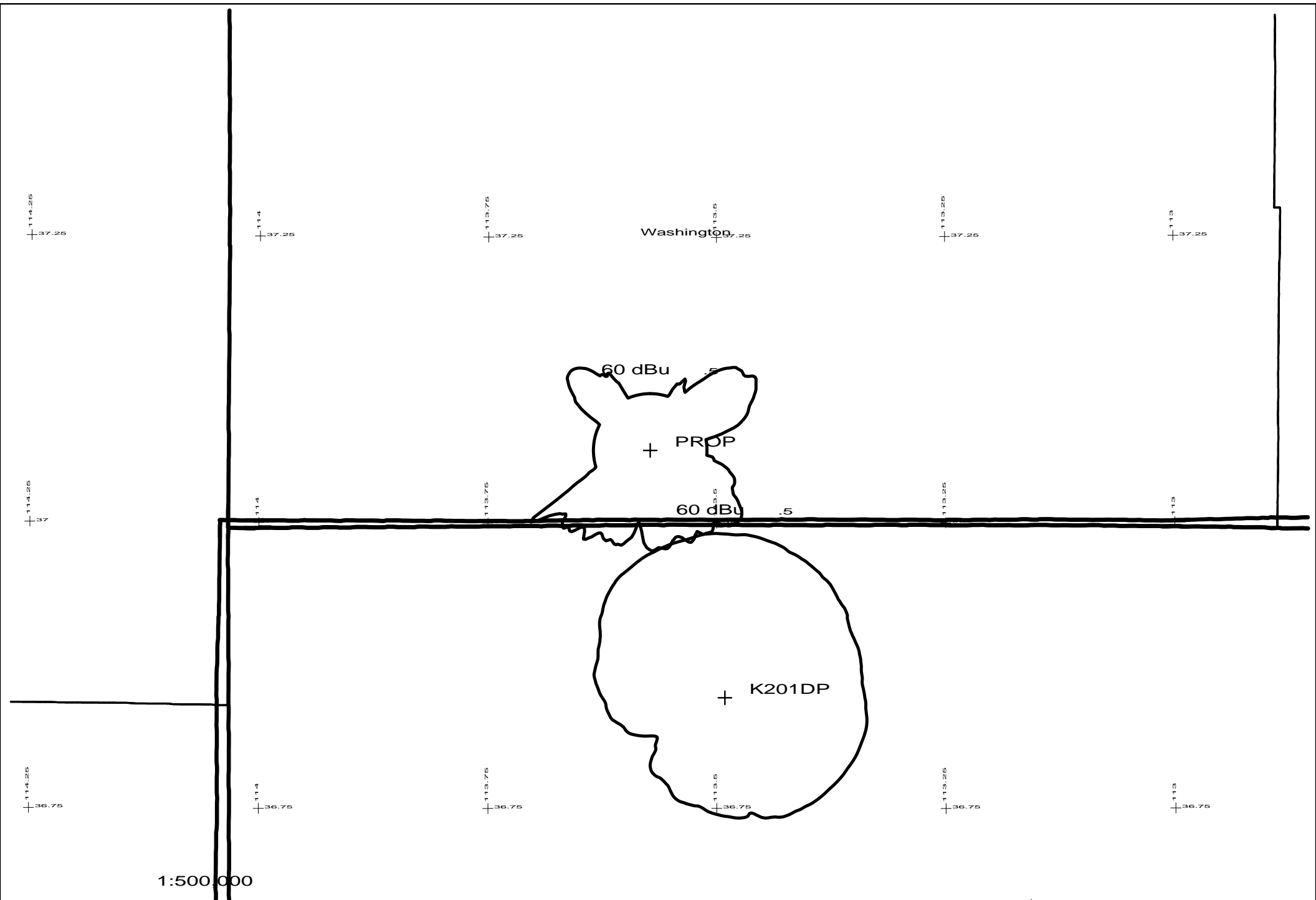
K203EY

The proposed site is contained entirely inside the service contour of second-adjacent FM Translator K203EY, 203D, .205kW, St. George, UT. The level of least arriving protected F(50,50) signal at the proposed transmitter site is 115.3-dBu. Using the U/D method for calculating proposed interference, the interfering contour is 155.3-dBu (free-space contour method employed). The interfering signal would, in the worst case at the maximum radial, extend 1 meter, or 4 feet, from the center of radiation, which is proposed at 18 meters AGL. This interference contour does not touch the ground and begins 17 meters or 56 feet AGL. Attached is a portion of the Topographic Map St George(UT), showing the tower is located in on a communications site called Webb Hill where there are no tall buildings that would intersect the interference contour. Calvary Chapel of Twin Falls, Inc. respectfully requests a waiver of the FM translator contour overlap regulations with respect to second-adjacent channel FM Translator K203EY St. George, UT.

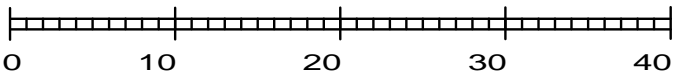
St George, UT K201DP Minor Change											
Calvary Chapel Of Twin Falls, Inc.											
Average Protected F(50-50)= 8.23 km											
Omni-directional											
COR= 975 M											
DISPLAY DATES											
DATA 05-14-13											
SEARCH 05-14-13											
CH	CALL	TYPE	ANT	AZI	DIST	LAT	PWR(kW)	INT(km)	PRO(km)	*IN*	*OUT*
CITY		STATE		<--	FILE #	LNG	HAAT(M)	COR(M)	LICENSEE	(Overlap	in km)
201D	K201DP	LIC_CN		163.2	25.12	36 50 49.0	0.010	58.4	15.8	-42.0*	-19.8
St. George		UT		343.3	BLFT19980624TC	113 29 28.0	572	1942	Calvary Chapel Of Twin Fal		
203D	K203EY	LIC_C_		270.0	0.17	37 03 49.0	0.205	1.0	6.7	-6.3*	-7.2*
St. George		UT		90.0	BLFT20111212AHX	113 34 29.0	32	948	Educational Media Foundati		
201D	K201HX	APP_DC_		238.0	51.34	36 49 05.1	0.250	8.6	2.7	30.0	6.1
Mesquite		NV		57.7	BPFT20130423AAM	114 03 40.9		537	Nevada Public Radio		
201D	K201HX	LIC_DH_		238.0	52.54	36 48 45.0	0.052	6.0	1.9	33.7	8.0
Mesquite		NV		57.7	BLFT20071025ADG	114 04 22.0	-102	561	Nevada Public Radio		
201C1	KCEP	LIC_CY		227.9	173.72	36 00 31.0	10.000	144.2	61.6	18.3	73.8
Las Vegas		NV		47.1	BLED19930617KA	115 00 22.0	364	1059	Economic Opportunity Board		
203C1	KEKL	APP_CX		243.5	93.88	36 41 00.0	100.000	9.2	68.2	75.5	25.0
Mesquite		NV		62.9	BPED20130429AAA	114 30 48.0	274	866	Southern Nevada Educationa		
06-T	K06KO	LI_D_N		34.5	57.27	37 29 16.0	0.150	8.6	14.2	22.8R	34.5M
Kanarraville, Etc.		UT		214.7	BLTTV20061219ABF	113 12 18.0	463	1935	Iron County		
203C2	KEKL	LIC_CX		243.5	93.88	36 41 00.0	20.500	4.3	40.9	80.5	52.3
Mesquite		NV		62.9	BLED20050824ADM	114 30 48.0	149	740	Southern Nevada Educationa		
06 D	K06JA-D	LI_D_N		46.5	86.96	37 35 56.9	0.015	24.7	5.0	29.8R	57.2M
Cedar Canyon		UT		227.0	BLDTV20090728ABI	112 51 23.2	-401	3246	Cedar Canyon Tv		
202D	K202AW	LIC_DCN		36.7	79.82	37 38 18.0	0.009	1.6	0.8	69.7	66.9
Cedar City		UT		217.0	BLFT19971201TA	113 01 52.0	429	2678	University Of Utah		
06NT	K06BQ	LI_DHN		36.8	219.41	38 38 04.0	0.052	8.6	14.2	148.0R	71.4M
Richfield, Etc.		UT		217.7	BLTTV19961217JA	112 03 33.0	1015	2686	Sevier County		
06NT	K06IG	LI_DHN		44.0	220.41	38 28 36.0	0.001	8.6	14.2	148.0R	72.4M
Koosharem		UT		225.1	BLTTV4279	111 48 54.0	500	2644	Sevier County		
06NT	K06BS	LI_DHN		47.3	220.85	38 23 42.0	0.008	8.6	14.2	148.0R	72.9M
Loa, Etc.		UT		228.5	BLTTV3916	111 42 39.0	308	2464	Wayne County		
06 D	K06DM-D	LI_D_N		299.4	90.58	37 27 34.0	0.060	13.7	2.3	16.0R	74.6M
Panaca		NV		118.8	BLDTV20130123ADQ	114 27 57.0	892	2284	Lincoln County Tv District		
06 D	K06PG-D	LI_D_N		207.9	227.16	35 14 58.0	0.300	8.6	14.2	148.0R	79.2M
Laughlin		NV		27.2	BLDTV20110217ACA	114 44 34.0	917	1484	Clark County School Distri		
06NT	K06FL	LI_HN		44.5	230.47	38 31 40.0	0.018	8.6	14.2	148.0R	82.5M
Fish Lake Resort		UT		225.6	BLTTV4131	111 43 02.0	553	2944	Sevier County		
06NT	K06FM	LI_DHN		62.0	106.29	37 30 25.0	0.033	12.4	1.6	14.0R	92.3M
Long Valley Junction		UT		242.6	BLTTV4596	112 30 37.0	278	2411	Western Kane County Specia		
06NT	K06NR	LI_D_N		90.2	249.73	37 01 16.1	0.046	12.4	1.6	148.0R	101.7M
Navajo Mtn. sch., etc		UT		271.9	BLTTV20060222ABF	110 45 58.0	435	1859	San Juan County		
06NT	K06DH	LI_HN		27.4	268.08	39 11 54.0	0.027	12.4	1.6	148.0R	120.1M
Scipio, holden		UT		208.2	BLTTV3011	112 08 33.0	379	2004	Millard County		
06 D	K06HT-D	LI_D_N		335.2	270.33	39 15 53.0	0.053	12.4	1.6	148.0R	122.3M
Ely		NV		154.3	BLDTV20111216ABM	114 53 35.0	505	2396	White Pine Television Dist		
06ZT	KGHD-LP	LI_D_N		236.2	146.51	36 19 24.0	3.000	12.1	1.6	13.7R	132.8M
Las Vegas		NV		55.4	BLTVL20120815ABJ	114 55 49.0	219	814	Obidia Porras		
06NT	K06NM	LI_D_N		89.5	288.46	37 02 28.0	0.005	12.4	1.6	148.0R	140.5M
Oljeto		UT		271.5	BLTTV20050829ACZ	110 19 48.0	193	1602	San Juan County		
06 D	K06AE-D	LI_D_N		153.2	294.64	34 41 14.0	0.500	8.6	14.2	148.0R	146.6M
Prescott		AZ		334.0	BLDTV20111114AAT	112 07 00.0	1206	2347	Multimedia Holdings Corpor		
06 D	K06KQ-D	LI_D_N		299.2	348.44	38 32 16.0	0.020	12.4	1.6	148.0R	200.4M
Manhattan		NV		117.0	BLDTV20110531AQP	117 03 57.0	378	2235	County Of Nye		
06 T	K06IQ	AP_D_N		229.4	373.82	34 50 03.0	0.208	8.6	14.2	148.0R	225.8M
Newberry Springs		CA		47.5	BDFCDTV20120622ADG	116 40 45.0	69	618	County Of San Bernardino A		

Terrain database is USGS 03 SEC , R= 73.215 qualifying spacings or FCC minimum Spacings in KM, M= Margin in KM
Contour distances are on direct line to and from reference station. Reference zone= , Co to 3rd adjacent.
Ant Column: (D= DA Standard, Z= DA 73.215, N= Not DA 73.215, _= Omni), Polarization (C,H,V,E), Beamtilt(Y,N,X)
***affixed to 'IN' or 'OUT' values = site inside protected contour.





Scale in km



PROP 201D .092kW 975M AMSL
N. Lat. 37 03 49 W. Lng. 113 34 22

Minor Change
- 05/13