

EXHIBIT 12

Waiver Request of Section 74.1204
Aberdeen WA K205EN 115 Watts ERP
Minor Modification – Antenna Change to 204
Calvary Chapel of Twin Falls, Inc.
November 2007

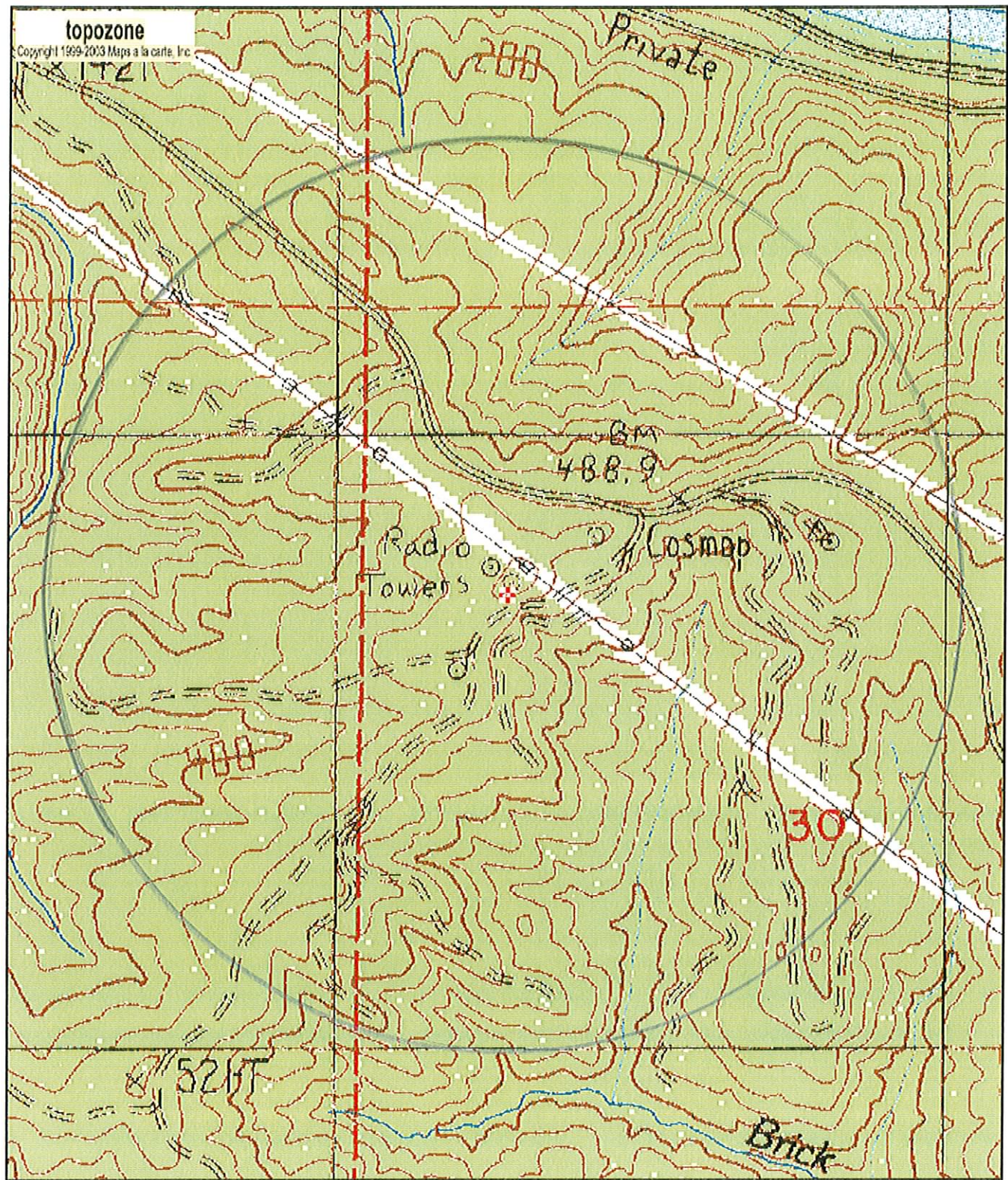
The proposed site is contained entirely inside the service contour of third-adjacent FM Translator K207DB Aberdeen and third-adjacent FM Station KLOP.A and KLOP.L Ocean Park WA

KLOP

The proposed site is contained entirely inside the service contour of third-adjacent FM Station KLOP.A(Class C application) and KLOP(Class A – Licensed), Channel 201, 84 & .550kW, Ocean Park, WA. The level of least arriving protected F(50,50) signal at the proposed transmitter site is 79.1-dBu for the application at 84kW and 60.7-dBu. Using the Undesired-to-Desired method for calculating proposed interference, the interfering contour with respect to KLOP.L 100.7-dBu (free-space contour method employed). The interfering signal would, in the worst case at the maximum radial, extend 706 meters, or .706km, from the base of the tower. This proposal is to only change channel/frequency and no other changes will be made with the equipment on the tower. This tower is located in a sparsely populated area. Attached is the USGS Central Park (WA) Quadrangle, with a .706km interference contour shown. Because there are no residences, businesses or major roads that are located within this interference contour, Calvary Chapel of Twin Falls, Inc. respectfully requests a waiver of the FM translator contour overlap regulations with respect to third-adjacent FM Station KLOP's Licensed Station and Application as well.

K207DB

The proposed site is contained entirely inside the service contour of third-adjacent FM Translator K207DB, 207D, .100kW, Aberdeen, WA. The level of least arriving protected F(50,50) signal at the proposed transmitter site is 112.1-dBu. Using the Undesired-to-Desired method for calculating proposed interference (free-space contour method employed) the interfering signal would, in the worst case at the maximum radial, extend 2 meters from the center of radiation, which exists at 27 meters AGL. This interference contour does not touch the ground. This proposal is to only change channel/frequency and no other changes will be made with the equipment on the tower. This tower is located in a sparsely populated area. Attached is the USGS Central Park (WA) Quadrangle. Because there are no residences, businesses or major roads that are located within this interference contour, Calvary Chapel of Twin Falls, Inc. respectfully requests a waiver of the FM translator contour overlap regulations with respect to third-adjacent FM Translator K207DB.



0 0.1 0.2 0.3 0.4 0.5 km
0 0.09 0.18 0.27 0.36 0.45 mi

46° 55' 58"N, 123° 43' 55"W (NAD27)
KGHO-FM (Hoquiam), USGS Central Park (WA) Quadrangle
Projection is UTM Zone 10 NAD83 Datum

M
G
M=17.433
G=-0.536