

FIGURE 6 - LOSS & GAIN AREAS

KJDX - 227A - Pollock Pines, CA

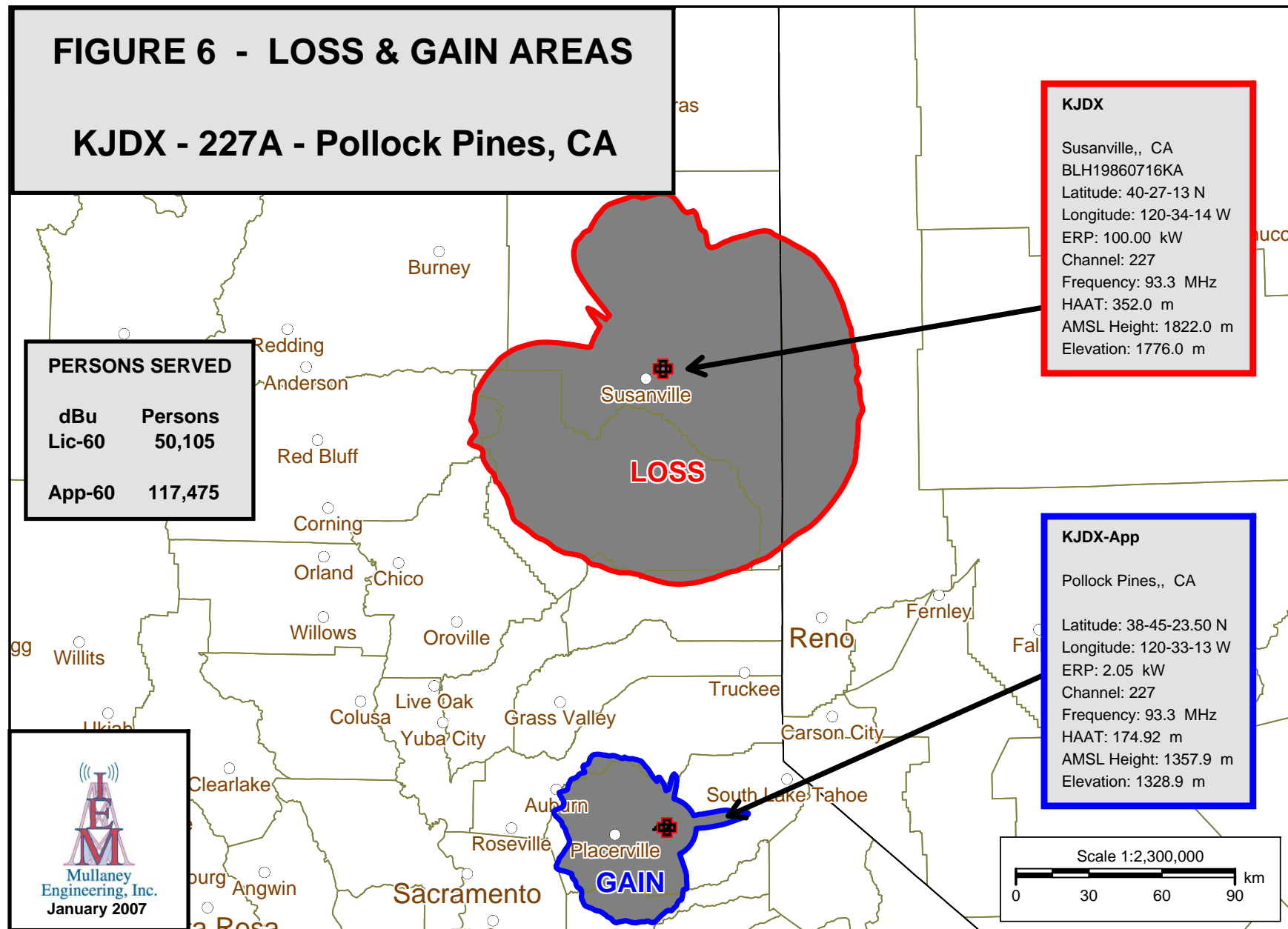


FIGURE 6-A DAY SERVICES TO LOSS AREA

KJDX - 227A - Pollock Pines, CA

LOSS AREA
KJDX FM
Lic 60 dBu

Service Population Report

Service	Persons	%
Zero	0	0.0
1st	0	0.0
2nd	48	0.1
3rd	64	0.2
4th	27	0.3
5th	49,966	100.0

Shading stops at 4th service



- KJDX
- KQNC.
- KJAR.
- KLVC.
- KPJP
- KKTO.
- KCHO.
- KHJQ
- KCNO
- KNLF.
- KLZN.
- KLCA.
- KWLU
- KTOR.
- KHGQ.
- KWYL.
- KODS.
- KRDG
- KRRX
- KLRH.
- KJZS.
- KURK.
- KWNZ.
- KUUB.
- KRNV-FM.
- KDOT.
- KOZZ-FM.
- KRNO.
- KBZZ.D-AM
- KCFJ.D-AM
- KIHM.D-AM
- KKOH.D-AM
- KKXX.D-AM
- KNCO.D-AM
- KPAY.D-AM
- KPLY.D-AM
- KSUE.D-AM
- KVIP.D-AM

Scale 1:2,300,000

0 30 60 90 km

FIGURE 6-B
NIGHT SERVICE TO LOSS AREA
KJDX - 227A - Pollock Pines, CA

Service Population Report

Service	Persons	%
Zero	129	0.3
1st	362	1.0
2nd	2,268	5.5
3rd	8,241	22.0
4th (or >)	39,105	100.0

LOSS AREA
KJDX FM
Lic 60 dBu

- KJDX
- KQNC
- KJAR
- KLVC
- KPJP
- KKTO
- KCHO
- KHJQ
- KCNO
- KNLF
- KLZN
- KLCA
- KWLJ
- KTOR
- KHGQ
- KWYL
- KODS
- KRDG
- KRRX
- KLRH
- KJZS
- KURK
- KWNZ
- KUUB
- KRNJ-FM
- KDOT
- KOZZ-FM
- KRNO
- KKOJ.N-AM
- KPLY.N-AM
- KPCO.N-AM
- KSUE.N-AM

Scale 1:2,300,000



FIGURE 6-C SERVICES TO GAIN AREA

KJDX - 227A - Pollock Pines, CA

NIGHTTIME SERVICE

New FM Facility on 227A at Pollock Pines will provide a 3rd nighttime service to 13 persons and a fourth or greater service to the remaining 117,462 persons.

DAYTIME SERVICE

Entire area is served by five or more services.

GAIN AREA
KJDX FM
App 60 dBu

- KJDX-App
- KYCJ
- KVMR
- KKTO
- KXJZ.
- KXSR
- KCCL
- KGBY
- KQJK.
- KNCO-FM
- KLMG
- KSSJ.
- KBYN
- KYMX
- KLCA.
- KSEG
- KRXQ
- KLVS
- KZZO
- KHYL
- KNTY
- KWYL
- KBAA
- KODS.
- KKFS.
- KNCI
- KCFA
- KWOD
- KDND
- KUNR.
- KNIS
- KNEV
- KZTQ
- KBUL-FM
- KTHX-FM.
- KDOT
- KOZZ-FM
- KRNO

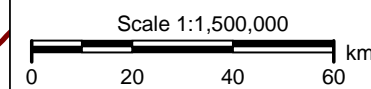


FIGURE 7 - URBANIZED AREAS

KJDX - 227A - Pollock Pines, CA

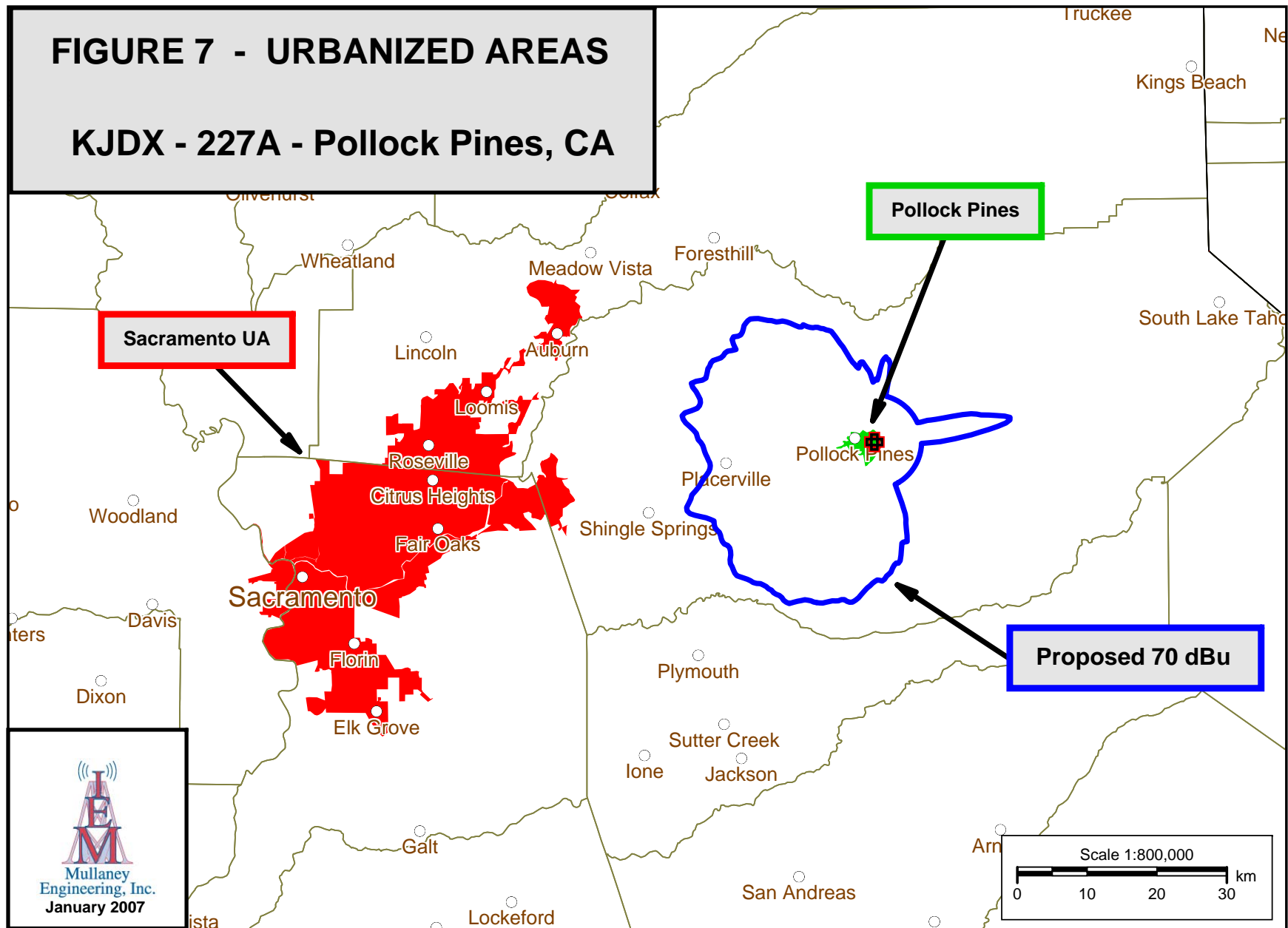


FIGURE A - COMMON OWNERSHIP

KJDX - 227A - Pollock Pines, CA

DUOPOLY OVERLAP
Existing 2 FM / 1 AM
Proposed 1 FM / 1 AM

KJDX LIC
70 dBu

KHJQ LIC
70 dBu

KSUE.AM
5 mV/m

Chico

Reno

Carson City

Yuba City

Roseville

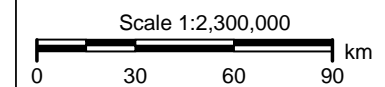
Sacramento

No Duopoly
Overlap

KJDX APP
70 dBu

CONTOURS

FM 70 dBu
AM 5 mV/m



FM Search Results

2 Records Found (2 Facilities)

DB Updated: 2/1/2007

<u>Call Sign</u>	<u>Stat / Intl St</u>	<u>Country / State / City</u>	<u>File Number</u>
<u>Freq</u>	<u>Service</u>	<u>Chan - Class - Intl</u>	<u>Border-Dist</u>
<u>Current Owner</u>	<u>Current/Archive</u>	<u>Docket</u>	<u>73 215 Last Update</u>
<u>Antenna ID</u>	<u>DA</u>	<u>Make / Model / Spacing</u>	<u>Orientation</u>
<u>Latitude</u>	<u>Longitude</u>	<u>ASRN</u>	<u>Tip AG</u>
<u>H / V :</u>	<u>ERP</u>	<u>ERP Max</u>	<u>HAAT</u>
<u>Facility ID</u>	<u>Fac. Status - Date</u>	<u>Application ID</u>	<u>App Status - Date</u>
<u>AGL</u>	<u>Max HAAT</u>		

KHJQ LIC US CA SUSANVILLE BMLH 20030523AFC
 92.3 MHz FM 222 C2 C N 11/29/2005
 SIERRA BROADCASTING CORPORATION
 N /// 1.00 50306 LICEN -
 N 40° 27' 13.0" W 120° 34' 14.0" 1011966 60.00 663111 GRANT - 8/7/2003
 H/V: 9.50(kW) 336.0 m / 1,102 ft 1,798.0 m / 5,899 ft 22.0 m / 72 ft 510.0 m / 1,673 ft

KJDX LIC US CA SUSANVILLE BLH 19860716KA
 93.3 MHz FM 227 C C N 11/29/2005
 SIERRA BROADCASTING CORPORATION
 N /// 60300 LICEN -
 N 40° 27' 13.0" W 120° 34' 14.0" 59.00 90151 GRANT - 6/24/1987
 H/V: 100.0(kW) 352.0 m / 1,155 ft 1,822.0 m / 5,978 ft 46.0 m / 151 ft 533.0 m / 1,749 ft

KJDX - 301 Application - January 2007

This application proposes to change the city of license to Pollock Pines, CA and to downgrade the facility to Ch. 227A.



FIGURE A-1 - COMMONLY OWNED FMs

KJDX FM - 227A - Pollock Pines, California
 January 2007

AM Search Results

1 Record Found

DB Updated: 2/1/2007

<u>Call Sign</u>	<u>Status</u>	<u>Country / State / City</u>			<u>Last Update</u>	<u>File Number</u>
<u>Frequency</u>	<u>Hours</u>	<u>Mode</u>	<u>Schedule</u>	<u>Class - Region 2</u>	<u>C/A</u>	<u>Antenna System ID</u>
<u>Current Owner</u>						
<u>Latitude</u>	<u>Longitude</u>			<u>CutOff Date</u>	<u>Facility ID</u>	<u>Fac. Status /Date</u>
<u>Power</u>	<u>Theoretical RMS -mV/m</u>			<u>Q Factor</u>	<u>Application ID</u>	<u>App Status - Date</u>
<u>Status: Canadian / Mexican / Region 2</u>			<u>IFRB List /Date</u>	<u>#Tower</u>	<u>Pat-Type</u>	<u>Change List # / Date</u>
					<u>#Augs</u>	

KSUE	LIC	US	CA	SUSANVILLE	11/29/2005	BL19801208AE
1240kHz	U	ND1	U	C C	C	13757
SIERRA BROADCASTING CORPORATION						
N 40° 23' 43.0"	W 120° 37' 32.0"				60302	LICEN -
1.00(kW)	334.7 @1 km 208.0 @1 mi				25779	GRANT - 1/8/1981
				1	T	0 02038 - 03/27/1986



FIGURE A-2 - COMMONLY OWNED AMs

KJDX FM - 227A - Pollock Pines, California
January 2007

KJDX - 227A - Pollock Pines, CA

Other AMs not included

DUOPOLY OVERLAP
Existing 2 FM / 1 AM
Proposed 1 FM / 1 AM

OVERLAP OF KHJQ FM & KSUE AM

CONTOURS

FM 70 dBu
AM 5 mV/m

50 km from
KLZN

Scale 1:1,150,000

