

Exhibit 12.1 - Copy of Existing Antenna Structure Registration

Registration Detail

Reg Number	1009337	Status	Constructed
File Number	A0339856	Constructed	04/01/1994
FAA Study	94-AGL-1118-OE	EMI	No
FAA Issue Date	02/16/1994	NEPA	No

Antenna Structure

Structure Type TOWER - Free standing or Guyed Structure used for Communications Purposes

Location (in NAD83 Coordinates)

Lat/Long 44-19-40.0 N 095-49-31.0 W 7.5 MI NE

City, State MARSHALL , MN

Center of
AM Array

Heights (meters)

Elevation of Site Above Mean Sea Level	Overall Height Above Ground (AGL)
457.2	128.0
Overall Height Above Mean Sea Level	Overall Height Above Ground w/o Appurtenances
585.2	121.9

Painting and Lighting Specifications

FAA Chapters 3, 4, 5, 13

Paint and Light in Accordance with FAA Circular Number 70/7460-1H

Owner & Contact Information

FRN	0004782413	Licensee ID	L00310363
Assignor FRN		Assignor ID	L00348537

Owner

Alpha Wireless Communications Co
Attention To: Paul Hoefs
1115 Cross St.
N.Mankato , MN 56003

P: (507)625-6720
E:

Contact

P:
E:

Last Action Status

Status	Constructed	Received	08/28/2003
Purpose	Change Owner	Entered	08/28/2003
Mode	Interactive		

Related Applications

08/28/2003	A0339856 - Change Owner (OC)
04/19/2001	A0186575 - Change Owner (OC)
12/05/1996	A0011105 - New (NE)
	Related applications (4)

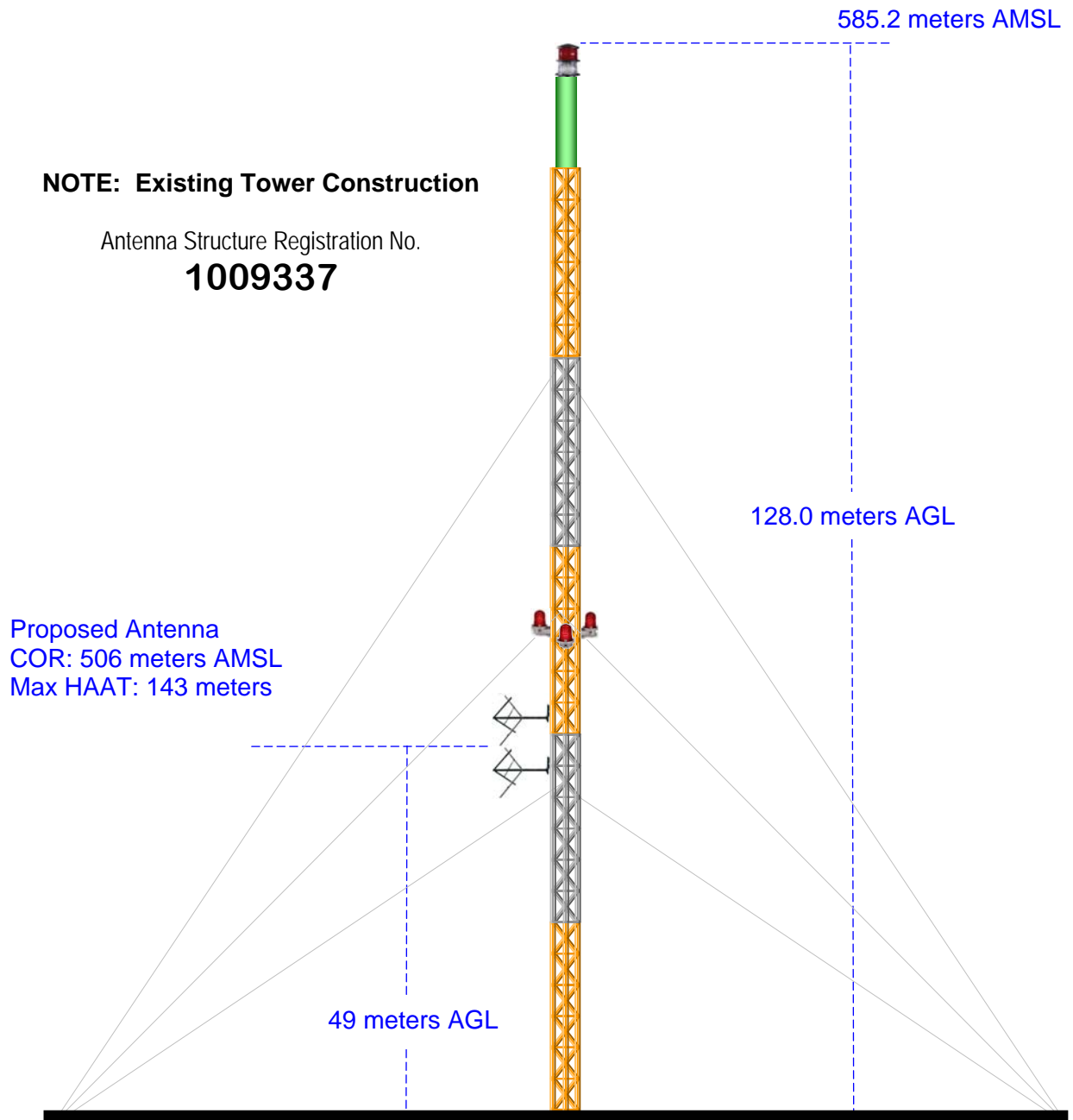
Comments

EXHIBIT 12.2

VERTICAL PLAN OF ANTENNA SYSTEM

The site is located south of the city of Marshall, Lyon County, MN.

Site Location
NL: 44° 19' 40"
WL: 95° 49' 30"



Ground Elevation = 457.2 m AMSL

Drawing is not to Scale

MUNN-REESE, INC.
Broadcast Engineering Consultants
Coldwater, MI 49036

Exhibit 12.3 Present vs Proposed Service Contour Study

K227AN.C
BNPFT20030821ACF
Latitude: 44-22-33 N
Longitude: 095-59-48 W
ERP: 0.14 kW
Channel: 227
Frequency: 93.3 MHz
AMSL Height: 532.0 m
Horiz. Pattern: Omni
Vert. Pattern: No
Prop Model: None
60 dBu Contour:
Total Population: 1,628
Total Area: 287.94 sq. km

K227AN.p
Proposed Operation
Latitude: 44-19-40 N
Longitude: 095-49-30 W
ERP: 0.14 kW
Channel: 227
Frequency: 93.3 MHz
AMSL Height: 506.0 m
Horiz. Pattern: Omni
60 dBu Contour:
Total Population: 5,530
Total Area: 318.37 sq. km

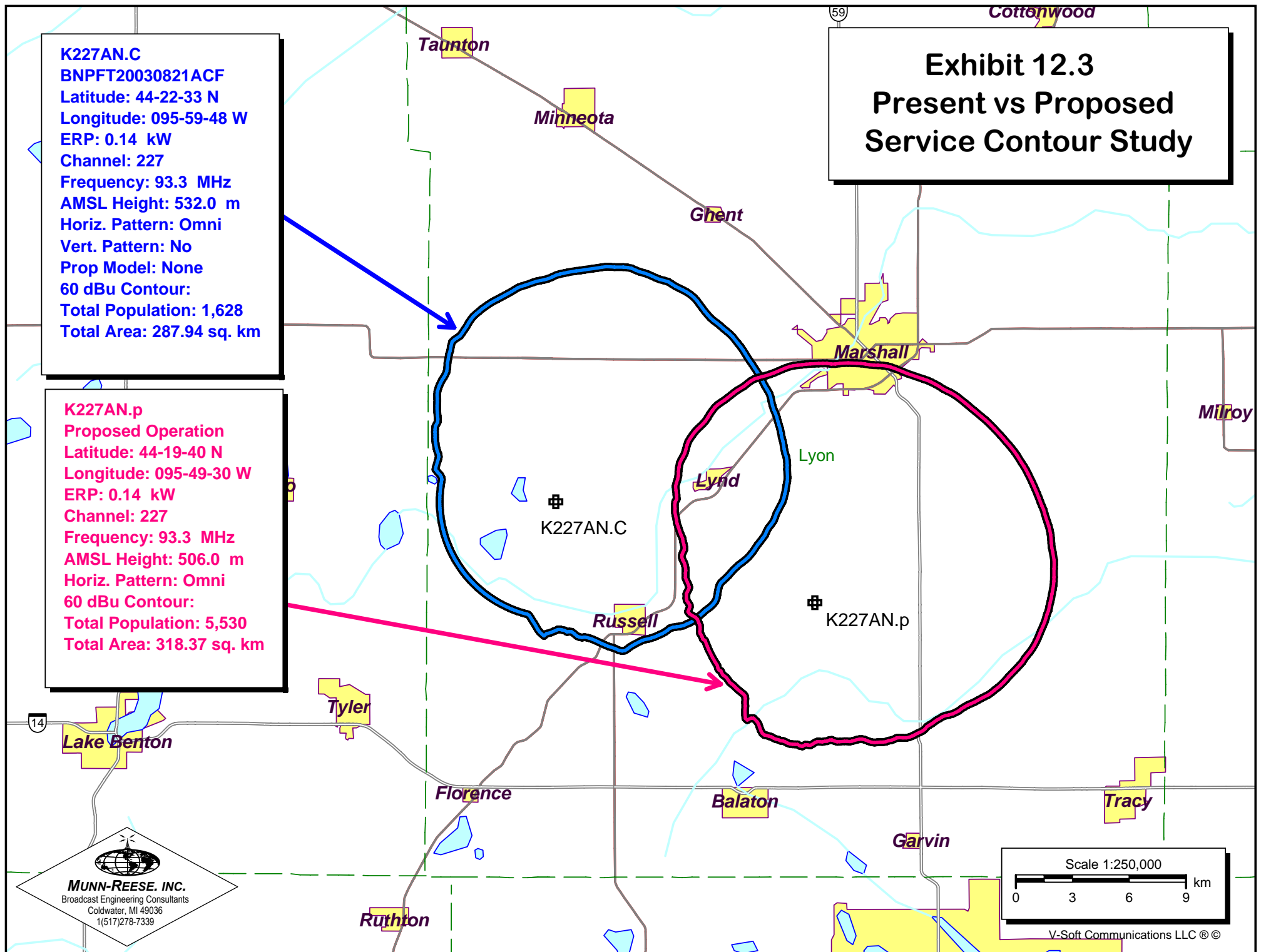
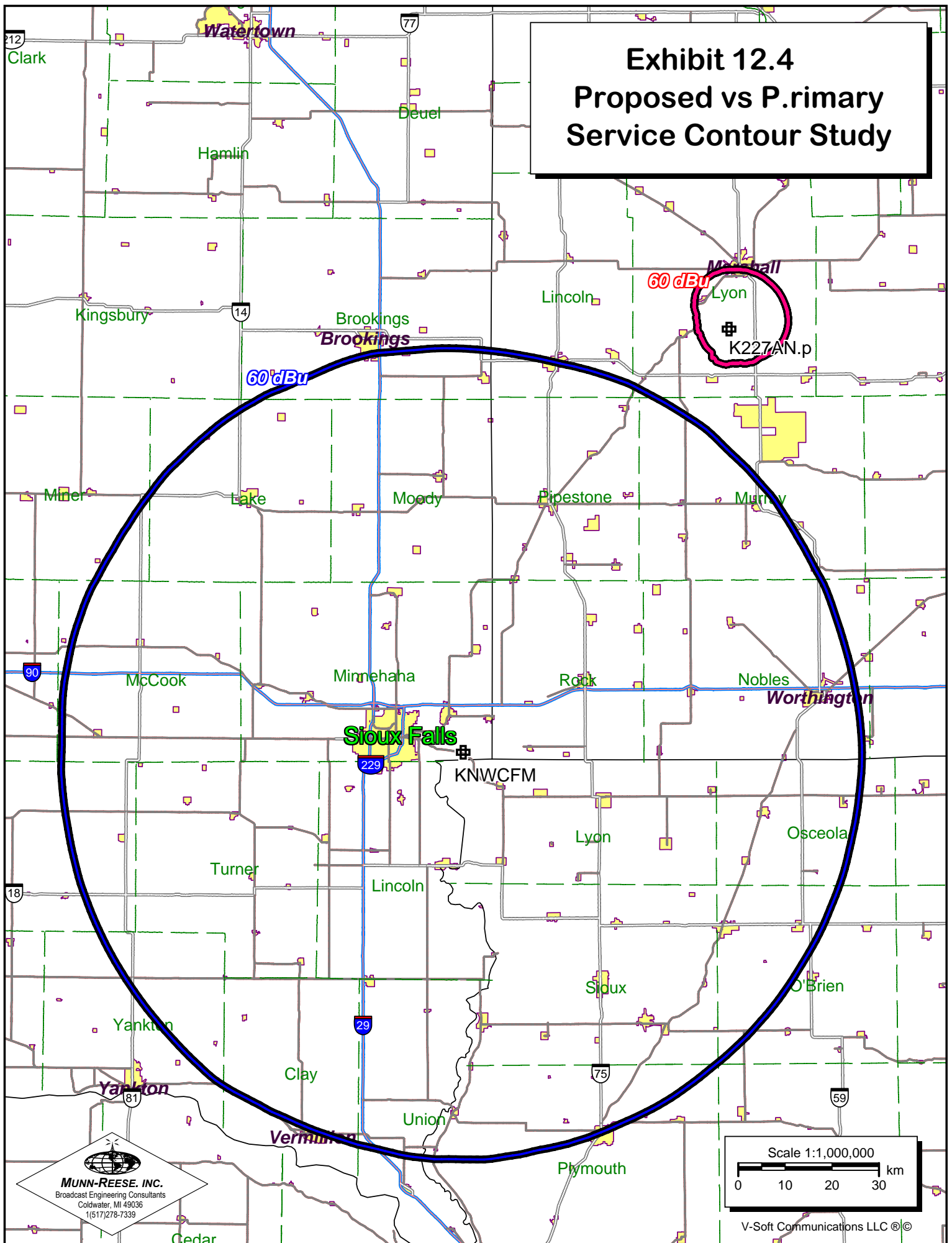


Exhibit 12.4 Proposed vs P.rimary Service Contour Study




MUNN-REESE, INC.
Broadcast Engineering Consultants
Coldwater, MI 49036
1(517)278-7339

Scale 1:1,000,000
0 10 20 30 km

V-Soft Communications LLC ©

Exhibit 12.5

Tabulation of Proposed Allocation

REFERENCE		CH# 227D - 93.3 MHz, Pwr= 0.14 kW, HAAT=142.5M, COR= 506 M								DISPLAY DATES	
44 19 40 N		Average Protected F(50-50)= 13.3 km								DATA	02-28-05
95 49 30 W		Ave. F(50-10) 40 dBu= 44.5 54 dBu= 19.9 80 dBu= 4.1 100 dBu= .8								SEARCH	03-04-05
CH CITY	CALL	TYPE STATE	AZI. <--	DIST FILE #	LAT. LNG.	Pwr(kW) HAAT(M)	COR(M) INT(km)	PRO(km) LICENSEE	*IN* (Overlap in km)	*OUT*	
227D Lynd	K227AN	CP C MN	291.4 111.4	14.69 BNPFT20030821ACF	44 22 33 95 59 48	0.140 83	532 34.5	10.2 Northwestern College	-27.58<	-21.42<	
<i>229C1</i>	<i>KBRKFM</i>	<i>LIC NCN</i>	<i>271.2</i>	<i>106.04</i>	<i>44 20 22</i>	<i>100.000</i>	<i>703</i>	<i>62.2</i>	<i>91.23</i>	<i>43.01</i>	
<i>Brookings</i>		<i>SD</i>	<i>91.2</i>	<i>BLH19910822KB</i>	<i>97 09 16</i>	<i>183</i>	<i>7.9</i>	<i>Three Eagles Of Huron, Inc</i>			
<i>228C2</i>	<i>KITN</i>	<i>LIC CN</i>	<i>159.6</i>	<i>95.10</i>	<i>43 31 31</i>	<i>50.000</i>	<i>605</i>	<i>51.3</i>	<i>10.02</i>	<i>32.44</i>	
<i>Worthington</i>		<i>MN</i>	<i>339.6</i>	<i>BLH19941121KC</i>	<i>95 24 47</i>	<i>143</i>	<i>77.1</i>	<i>Three Eagles Of Luverne, I</i>			
230A Granite Falls	KKRC	LIC CN MN	14.7 194.7	60.79 BLH19931012KC	44 51 24 95 37 46	6.000 67	385 2.4	23.6 Iowa City Broadcasting Com	45.36	36.39	
226C1 New Ulm	KXLP	LIC CN MN	99.0 279.0	132.69 BLH19890117KG	44 07 44 94 11 15	100.000 138	440 86.4	56.8 Clear Channel Broadcasting	34.33	58.13	
225C1 Watertown	KSDRFM	LIC CY SD	316.2 136.2	131.70 BLH19920320KA	45 10 31 96 59 15	100.000 285	858 9.9	71.2 Three Eagles Of Brookings,	111.51	59.67	
228C3 Benson	KSCRFM	LIC NCX MN	10.5 190.5	112.01 BLH20020905AAJ	45 19 06 95 33 48	25.000 108	423 61.7	40.4 Quest Broadcasting, Inc.	37.36	52.18	
227C1 Wessington Springs	971226	CP CX SD	266.6 86.6	199.64 BPH19971226MA	44 11 39 98 19 05	100.000 245	628 166.8	67.8 Alpena Broadcasting Compan	26.13	109.25	
280D Olivia	K280ET	CP C MN	53.0 233.0	83.48 BNPFT20030825ABF	44 46 33 94 58 54	0.250 45	366 8.7	8.7 Edgewater Broadcasting, In	3.2R	80.3M	
230C2 Sioux Center	KSOUFM	LIC CN IA	195.8 15.8	143.56 BLH19890919KD	43 05 01 96 18 20	50.000 145	560 5.9	51.5 Sorenson Broadcasting Corp	129.96	91.26	

ERP and HAAT on direct-line with reference station.

"<" = Contour Overlap

Blue Italicized print indicates contour protection maps supplied in Exhibit 12.5. It is believed sufficient clearance exists with the remaining facilities, however contour protection maps and contour tabulations towards any of the facilities will be supplied upon request.

Exhibit 12.6

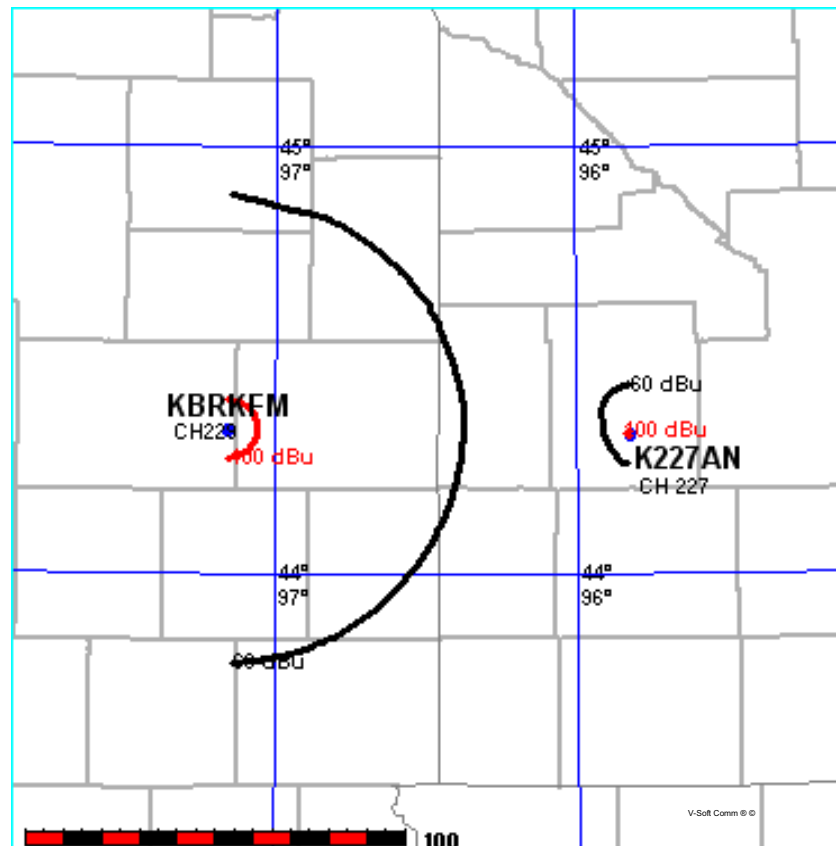
Contour Protection Maps Towards Select Stations

FMCommander Allocation Study
03-04-2005

K227AN CH 227 D
.14 kW 506 M COR
Prot. = 60 dBu
Intef. = 100 dBu

KBRKFM CH 229 C1 BLH19910822KB
100 kW, 703 M COR
Prot. = 60 dBu
Intef. = 100 dBu

Scale = 1:2,000,000



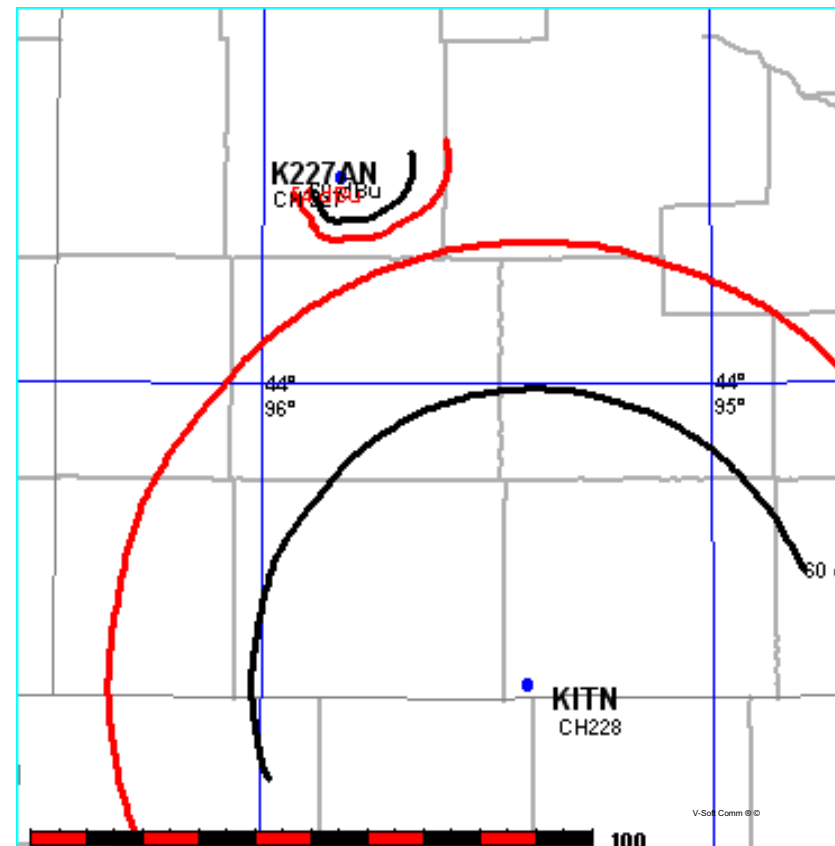
Tabulations of contours will be supplied upon request.

FMCommander Allocation Study
03-04-2005

K227AN CH 227 D
.14 kW 506 M COR
Prot. = 60 dBu
Intef. = 54 dBu

KITN CH 228 C2 BLH19941121KC
50 kW, 605 M COR
Prot. = 60 dBu
Intef. = 54 dBu

Scale = 1:1,350,000



Tabulations of contours will be supplied upon request.