

TECHNICAL EXHIBIT
APPLICATION FOR DTV MAXIMIZATION
STATION WAFB-DT (FACILITY ID 1498)
BATON ROUGE, LOUISIANA
CH 9 5.57 KW 511 M

Technical Narrative

This Technical Exhibit supports an application for digital television (DTV) station WAFB-DT to maximize its post-transition facility. This application requests a construction permit (CP) for a digital television operation on channel 9, using its licensed analog, non-directional antenna.

Proposed Facilities

Station WAFB-DT proposes to operate DTV channel 9 with a non-directional effective radiated power (ERP) of 5.57 kilowatts and antenna height above average terrain (HAAT) of 511 meters. The transmitter site coordinates are:

30° 21' 58" North Latitude
91° 12' 47" West Longitude

A sketch of antenna and pertinent elevations are included as Figure 1. Figure 2 depicts a typical antenna elevation pattern.

Figure 3 is a map showing the DTV predicted coverage contours. The predicted 43 dBu contour will encompass all of Baton Rouge. The Baton Rouge city limits were derived from information contained in the 2000 U.S. Census of Population and Housing.

Population Served

The herein proposed WAFB-DT “maximized” facility is predicted to serve 1,560,795 persons, post-transition, based upon the 2000 Census. WAFB-DT’s associated Appendix B facility is predicted to serve 847,359 persons. Therefore, the herein proposed WAFB-DT facility would serve more than 100% of WAFB-DT’s Appendix B population.

Allocation Considerations

The proposed WAFB-DT operation meets the FCC’s post-transition interference standards to pertinent Class A and DTV facilities using the procedures outlined in the FCC’s OET-69 Bulletin and a **non-standard 1 kilometer cell size and 0.2 kilometer terrain distance increment**. The results of the interference analyses are summarized in Figure 4. As indicated, the proposed facility will meet the 0.5% interference criterion outlined in the FCC’s Rules and published guidelines with respect to all considered stations, except to station KLFY-DT, on channel 10 at Lafayette, Louisiana. An interference agreement with KLFY-DT has been obtained.

Radiofrequency Electromagnetic Field Exposure

The proposed WAFB-DT facilities were evaluated in terms of potential radio frequency (RF) energy exposure at ground level to workers and the general public. The radiation center for the proposed DTV antenna is located 510 meters above ground level with an ERP of 5.57 kW. A conservative relative field value of 0.2 was assumed for the existing RCA TW-15A9P antenna (see Figure 2). The calculated power density at a point 2 meters above ground level will not exceed 0.0001 mW/cm². This is less than 5% of the FCC's recommended limit of 0.2 mW/cm² for channel 9 for an “uncontrolled” environment.

Access to the transmitting site will be restricted and appropriately marked with warning signs. In the event that workers or other authorized personnel enter restricted areas or climb the tower, appropriate measures will be taken to assure worker safety with respect to radio frequency radiation exposure. Such measures include reducing the average exposure by spreading out the work over a longer period of time, wearing "accepted" RFR protective clothing and/or RFR exposure monitors or scheduling work when the station is at reduced power or shut down. The proposed WAFB-DT operation appears to be otherwise categorically excluded from environmental processing.

It is noted that this statement only addresses the potential for radiofrequency electromagnetic field exposure. All other aspects of the environmental processing analysis will be or already have been provided to the FCC by the tower owner.



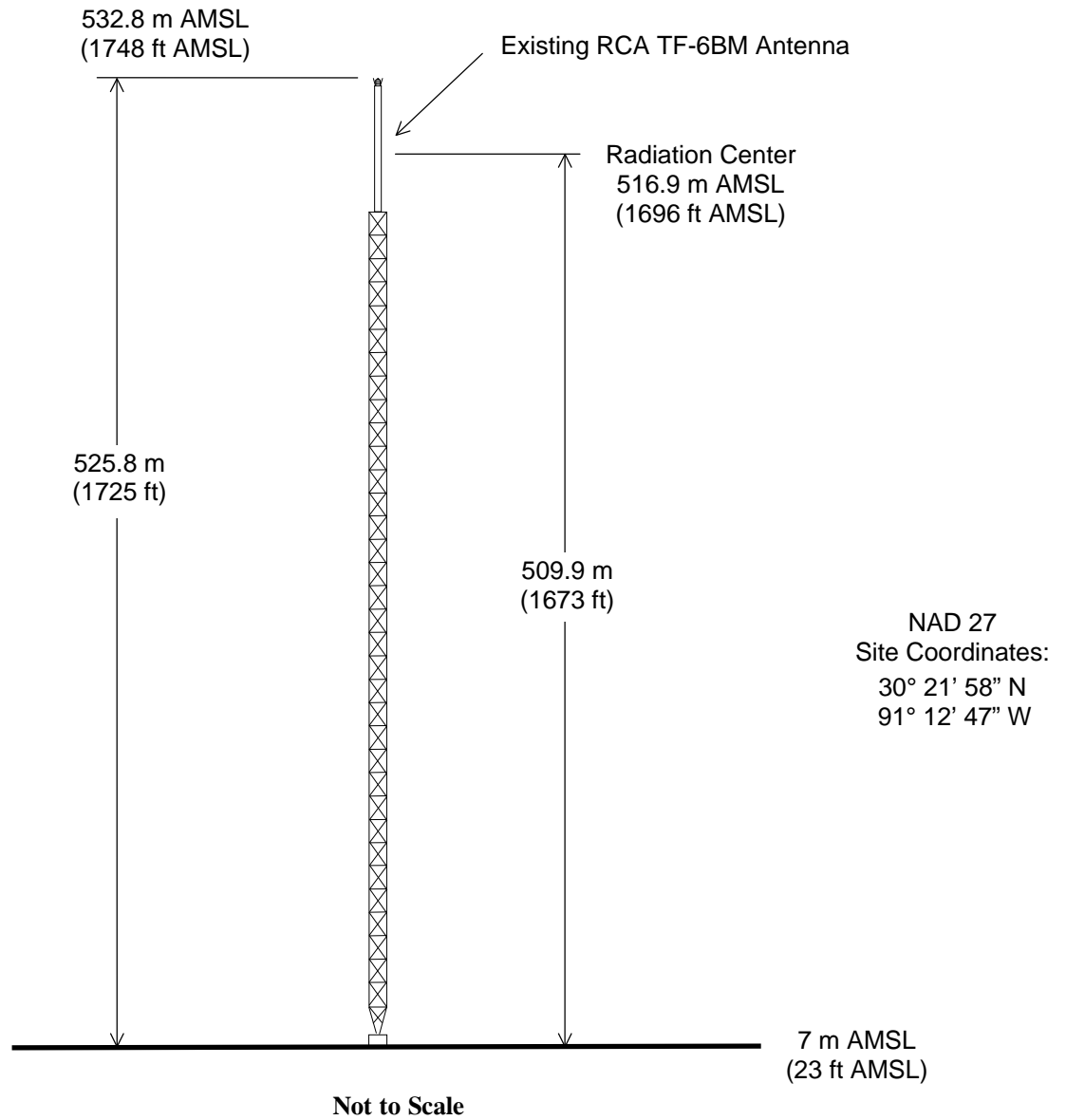
Jonathan N. Edwards
du Treil, Lundin & Rackley, Inc.
201 Fletcher Avenue
Sarasota, Florida 34237
(941) 329-6000
JON@DLR.COM

June 17, 2008

Figure 1



Registration No. 1020497



ANTENNA AND SUPPORTING STRUCTURE

STATION WAFB-DT
BATON ROUGE, LOUISIANA
CH 9 5.57 KW 511 M

du Treil, Lundin & Rackley, Inc. Sarasota, Florida

Proposal Number	C-x	Figure 2
Date	11-Mar-08	
Call Letters	x	Channel 9
Location	For Baton Rouge, LA	
Customer	x	
Antenna Type	TW-15	

ELEVATION PATTERN

RMS Gain at Main Lobe	15.30 (11.85 dB)	Beam Tilt	0.50 deg
RMS Gain at Horizontal	14.40 (11.58 dB)	Frequency	189.00 MHz
Calculated / Measured	Calculated	Drawing #	050-90

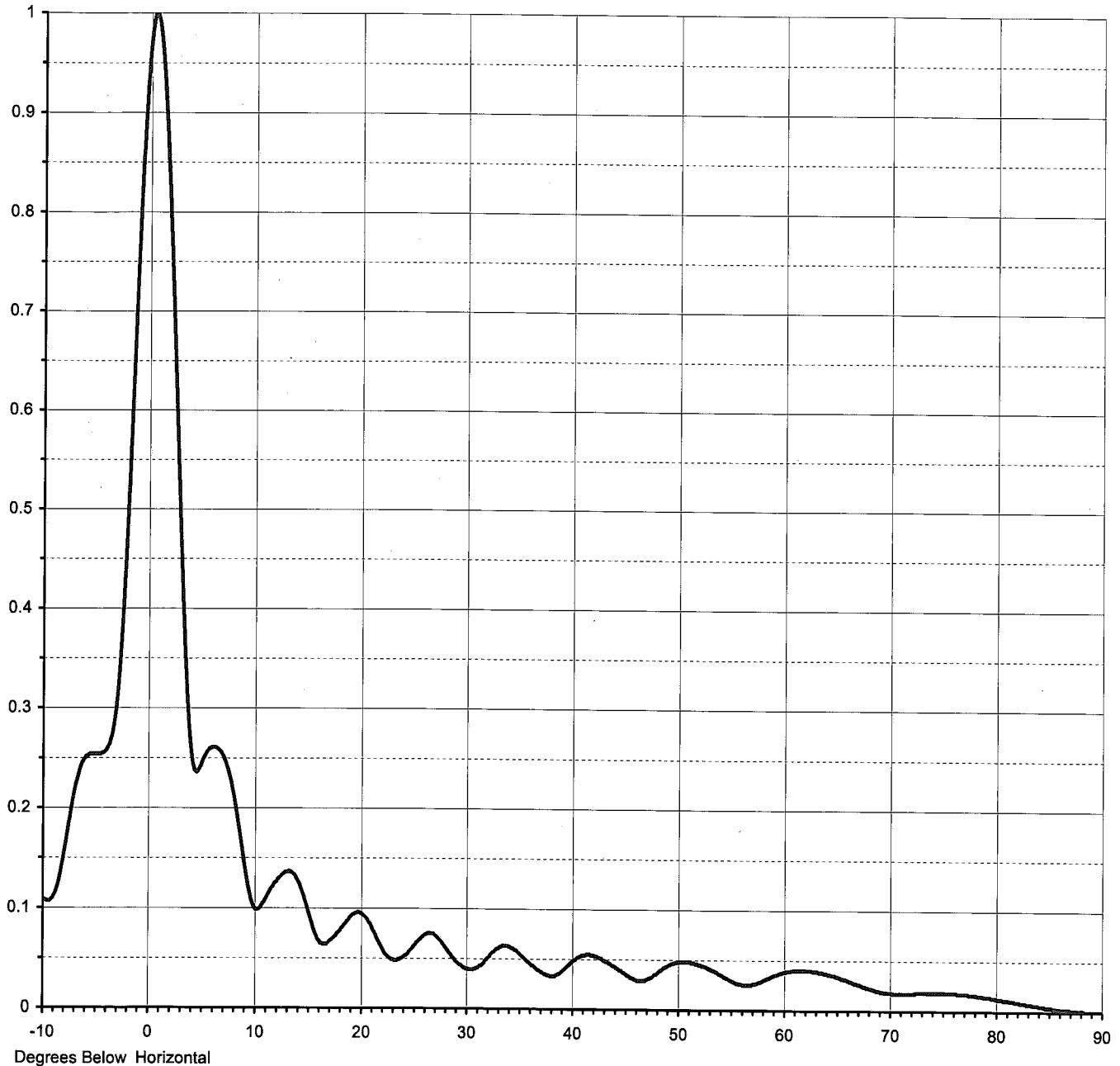


Figure 3



TW Census data selected 2000
Post Transition Data Base Selected /export/home/cdbs/pt_tvdb.sff

TV INTERFERENCE and SPACING ANALYSIS PROGRAM

Date: 06-17-2008 Time: 19:16:03
Record Selected for Analysis

WAFB USERRECORD-01 BATON ROUGE LA US
Channel 09 ERP 5.57 kW HAAT 511. m RCAMSL 00517 m
Latitude 030-21-58 Longitude 0091-12-47
Status APP Zone 3 Border
Last update Cutoff date Docket
Comments
Applicant

Cell Size for Service Analysis 1.0 km/side
Distance Increments for Longley-Rice Analysis 0.20 km

Facility meets maximum height/power limits

Azimuth (Deg)	ERP (kW)	HAAT (m)	36.0 dBu F(50,90) (km)
0.0	5.570	507.7	102.4
45.0	5.570	504.4	102.2
90.0	5.570	509.9	102.6
135.0	5.570	512.2	102.7
180.0	5.570	513.3	102.8
225.0	5.570	514.7	102.9
270.0	5.570	514.3	102.9
315.0	5.570	512.2	102.7

Evaluation toward Class A Stations
No Spacing violations or contour overlap to Class A stations
Class A Evaluation Complete

Proposed facility OK to FCC Monitoring Stations
Proposed facility OK toward West Virginia quiet zone
Proposed facility OK toward Table Mountain
Proposed facility is beyond the Canadian coordination distance
Proposed facility is beyond the Mexican coordination distance
Proposed station is OK toward AM broadcast stations

Start of Interference Analysis

Channel	Call	City/State	ARN
09	WAFB	BATON ROUGE LA	USERRECORD01

Stations Potentially Affected by Proposed Station

Chan	Call	City/State	Dist(km)	Status	Application Ref. No.
08	KNOE-TV	MONROE LA	219.2	PLN	DTVPLN -DTVP0130
08	KNOE-TV	MONROE LA	219.2	CP	BPCDT -20080214ABZ
08	WVUE	NEW ORLEANS LA	129.8	PLN	DTVPLN -DTVP0131
08	WVUE	NEW ORLEANS LA	129.8	CP	BPCDT -20080312ACS
09	WALA-TV	MOBILE AL	328.9	LIC	BLCDDT -20050316ADI
09	WALA-TV	MOBILE AL	328.9	PLN	DTVPLN -DTVP0177
09	KTRE	LUFKIN TX	361.6	CP	BPCDT -20080516ABZ
09	KTRE	LUFKIN TX	361.6	PLN	DTVPLN -DTVP0225
10	KLFY-TV	LAFAYETTE LA	102.8	PLN	DTVPLN -DTVP0260
10	KLFY-TV	LAFAYETTE LA	102.8	CP	BPCDT -20080313AAQ

%%%

Analysis of Interference to Affected Station 1

Analysis of current record

Channel	Call	City/State	Application Ref. No.
08	KNOE-TV	MONROE LA	DTVPLN -DTVP0130

Stations Potentially Affecting This Station

Chan	Call	City/State	Dist(km)	Status	Application Ref. No.
07	KPLC	LAKE CHARLES LA	218.8	PLN	DTVPLN -DTVP0066
07	KPLC	LAKE CHARLES LA	218.8	CP	BPCDT -20080404ABI
07	WLBT	JACKSON MS	158.8	CP	BPCDT -20080516ABY
07	WLBT	JACKSON MS	158.8	PLN	DTVPLN -DTVP0075
08	KAIT	JONESBORO AR	423.5	CP	BPCDT -20080520ACG
08	KAIT	JONESBORO AR	423.5	PLN	DTVPLN -DTVP0111
08	WVUE	NEW ORLEANS LA	320.8	PLN	DTVPLN -DTVP0131
08	WVUE	NEW ORLEANS LA	320.8	CP	BPCDT -20080312ACS
08	WTVA	TUPELO MS	329.9	CP MOD	BMPCDDT -20080407ACF
08	WTVA	TUPELO MS	329.9	PLN	DTVPLN -DTVP0139

09 WAFB BATON ROUGE LA 219.2 PLN DTVPLN -DTP0199
 09 WAFB BATON ROUGE LA 219.2 APP USERRECORD-01
 Proposal causes no interference

#####

Analysis of Interference to Affected Station 2

Analysis of current record

Channel	Call	City/State	Application	Ref. No.
08	KNOE-TV	MONROE LA	BPCDT	-20080214ABZ

Stations Potentially Affecting This Station

Chan	Call	City/State	Dist(km)	Status	Application	Ref. No.
07	KPLC	LAKE CHARLES LA	218.8	PLN	DTVPLN	-DTP0066
07	KPLC	LAKE CHARLES LA	218.8	CP	BPCDT	-20080404ABI
07	WLBT	JACKSON MS	158.8	CP	BPCDT	-20080516ABY
07	WLBT	JACKSON MS	158.8	PLN	DTVPLN	-DTP0075
08	KAIT	JONESBORO AR	423.5	CP	BPCDT	-20080520ACG
08	KAIT	JONESBORO AR	423.5	PLN	DTVPLN	-DTP0111
08	WVUE	NEW ORLEANS LA	320.8	PLN	DTVPLN	-DTP0131
08	WVUE	NEW ORLEANS LA	320.8	CP	BPCDT	-20080312ACS
08	WTVA	TUPELO MS	329.9	CP MOD	BMPCDT	-20080407ACF
08	WTVA	TUPELO MS	329.9	PLN	DTVPLN	-DTP0139
09	WAFB	BATON ROUGE LA	219.2	PLN	DTVPLN	-DTP0199
09	WAFB	BATON ROUGE LA	219.2	APP	USERRECORD-01	

Proposal causes no interference

#####

Analysis of Interference to Affected Station 3

Analysis of current record

Channel	Call	City/State	Application	Ref. No.
08	WVUE	NEW ORLEANS LA	DTVPLN	-DTP0131

Stations Potentially Affecting This Station

Chan	Call	City/State	Dist(km)	Status	Application	Ref. No.
08	KNOE-TV	MONROE LA	320.8	PLN	DTVPLN	-DTP0130
08	KNOE-TV	MONROE LA	320.8	CP	BPCDT	-20080214ABZ
09	WALA-TV	MOBILE AL	221.9	LIC	BLCDT	-20050316ADI
09	WALA-TV	MOBILE AL	221.9	PLN	DTVPLN	-DTP0177
09	WAFB	BATON ROUGE LA	129.8	PLN	DTVPLN	-DTP0199
09	WAFB	BATON ROUGE LA	129.8	APP	USERRECORD-01	

Total scenarios = 2

Result key: 1

Scenario 1 Affected station 3

Before Analysis

Results for: 8A LA NEW ORLEANS DTVPLN DTP0131 PLN
 HAAT 302.0 m, ATV ERP 14.7 kW

	POPULATION	AREA (sq km)
within Noise Limited Contour	1795083	28585.1
not affected by terrain losses	1794899	28545.0
lost to NTSC IX	0	0.0
lost to additional IX by ATV	33	2.9
lost to ATV IX only	33	2.9
lost to all IX	33	2.9

Potential Interfering Stations Included in above Scenario 1

8A LA MONROE DTVPLN DTP0130 PLN

After Analysis

Results for: 8A LA NEW ORLEANS DTVPLN DTP0131 PLN
 HAAT 302.0 m, ATV ERP 14.7 kW

	POPULATION	AREA (sq km)
within Noise Limited Contour	1795083	28585.1
not affected by terrain losses	1794899	28545.0
lost to NTSC IX	0	0.0
lost to additional IX by ATV	2555	82.1
lost to ATV IX only	2555	82.1
lost to all IX	2555	82.1

Potential Interfering Stations Included in above Scenario 1

8A LA MONROE DTVPLN DTP0130 PLN
 9A LA BATON ROUGE USERRECORD01 APP

Percent new IX = 0.1405%

Result key: 2
Scenario 2 Affected station 3
Before Analysis

Results for: 8A LA NEW ORLEANS DTVPLN DTVP0131 PLN
HAAT 302.0 m, ATV ERP 14.7 kW
POPULATION AREA (sq km)
within Noise Limited Contour 1795083 28585.1
not affected by terrain losses 1794899 28545.0
lost to NTSC IX 0 0.0
lost to additional IX by ATV 33 2.9
lost to ATV IX only 33 2.9
lost to all IX 33 2.9

Potential Interfering Stations Included in above Scenario 2

8A LA MONROE BPCDT 20080214ABZ CP

After Analysis

Results for: 8A LA NEW ORLEANS DTVPLN DTVP0131 PLN
HAAT 302.0 m, ATV ERP 14.7 kW
POPULATION AREA (sq km)
within Noise Limited Contour 1795083 28585.1
not affected by terrain losses 1794899 28545.0
lost to NTSC IX 0 0.0
lost to additional IX by ATV 2555 82.1
lost to ATV IX only 2555 82.1
lost to all IX 2555 82.1

Potential Interfering Stations Included in above Scenario 2

8A LA MONROE BPCDT 20080214ABZ CP
9A LA BATON ROUGE USERRECORD01 APP

Percent new IX = 0.1405%
Worst case new IX 0.1405% Scenario 1

#####

Analysis of Interference to Affected Station 4

Analysis of current record

Channel	Call	City/State	Application	Ref. No.
08	WVUE	NEW ORLEANS LA	BPCDT	-20080312ACS

Stations Potentially Affecting This Station

Chan	Call	City/State	Dist(km)	Status	Application	Ref. No.
08	KNOE-TV	MONROE LA	320.8	PLN	DTVPLN	-DTVP0130
08	KNOE-TV	MONROE LA	320.8	CP	BPCDT	-20080214ABZ
09	WALA-TV	MOBILE AL	221.9	LIC	BLCDT	-20050316ADI
09	WALA-TV	MOBILE AL	221.9	PLN	DTVPLN	-DTVP0177
09	WAFB	BATON ROUGE LA	129.8	PLN	DTVPLN	-DTVP0199
09	WAFB	BATON ROUGE LA	129.8	APP	USERRECORD-01	

Total scenarios = 1

Result key: 3
Scenario 1 Affected station 4
Before Analysis

Results for: 8A LA NEW ORLEANS BPCDT 20080312ACS CP
HAAT 302.0 m, ATV ERP 14.6 kW
POPULATION AREA (sq km)
within Noise Limited Contour 1794624 28528.4
not affected by terrain losses 1794407 28487.3
lost to NTSC IX 0 0.0
lost to additional IX by ATV 0 0.0
lost to ATV IX only 0 0.0
lost to all IX 0 0.0

Potential Interfering Stations Included in above Scenario 1

After Analysis

Results for: 8A LA NEW ORLEANS BPCDT 20080312ACS CP
HAAT 302.0 m, ATV ERP 14.6 kW
POPULATION AREA (sq km)
within Noise Limited Contour 1794624 28528.4
not affected by terrain losses 1794407 28487.3
lost to NTSC IX 0 0.0
lost to additional IX by ATV 2449 77.3
lost to ATV IX only 2449 77.3

lost to all IX 2449 77.3

Potential Interfering Stations Included in above Scenario 1

9A LA BATON ROUGE USERRECORD01 APP

Percent new IX = 0.1365%

Worst case new IX 0.1365% Scenario 1

#####

Analysis of Interference to Affected Station 5

Analysis of current record

Channel	Call	City/State	Application	Ref. No.
09	WALA-TV	MOBILE AL	BLCDDT	-20050316ADI

Stations Potentially Affecting This Station

Chan	Call	City/State	Dist(km)	Status	Application	Ref. No.
08	WVUE	NEW ORLEANS LA	221.9	PLN	DTVPLN	-DTVP0131
08	WVUE	NEW ORLEANS LA	221.9	CP	BPCDDT	-20080312ACS
09	WJSU-TV	ANNISTON AL	349.5	LIC	BLCDDT	-20050222ACG
09	WJSU-TV	ANNISTON AL	349.5	PLN	DTVPLN	-DTVP0176
09	WPGX	PANAMA CITY FL	219.2	LIC	BLCDDT	-20060622AAR
09	WPGX	PANAMA CITY FL	219.2	PLN	DTVPLN	-DTVP0189
09	WTVM	COLUMBUS GA	338.9	CP	BPCDDT	-20080505ABO
09	WTVM	COLUMBUS GA	338.9	PLN	DTVPLN	-DTVP0190
09	WAFB	BATON ROUGE LA	328.9	PLN	DTVPLN	-DTVP0199
10	WDIQ	DOZIER AL	164.8	CP	BPEDT	-20080310AEB
10	WDIQ	DOZIER AL	164.8	PLN	DTVPLN	-DTVP0238
09	WAFB	BATON ROUGE LA	328.9	APP	USERRECORD-01	

Total scenarios = 8

Result key: 4

Scenario 1 Affected station 5

Before Analysis

Results for: 9A AL MOBILE BLCDDT 20050316ADI LIC

HAAT 381.0 m, ATV ERP 29.0 kW	POPULATION	AREA (sq km)
within Noise Limited Contour	1207398	35504.5
not affected by terrain losses	1204691	34959.2
lost to NTSC IX	0	0.0
lost to additional IX by ATV	40	30.9
lost to ATV IX only	40	30.9
lost to all IX	40	30.9

Potential Interfering Stations Included in above Scenario 1

9A AL ANNISTON	BLCDDT	20050222ACG	LIC
9A FL PANAMA CITY	BLCDDT	20060622AAR	LIC
9A GA COLUMBUS	BPCDDT	20080505ABO	CP

After Analysis

Results for: 9A AL MOBILE BLCDDT 20050316ADI LIC

HAAT 381.0 m, ATV ERP 29.0 kW	POPULATION	AREA (sq km)
within Noise Limited Contour	1207398	35504.5
not affected by terrain losses	1204691	34959.2
lost to NTSC IX	0	0.0
lost to additional IX by ATV	61	43.9
lost to ATV IX only	61	43.9
lost to all IX	61	43.9

Potential Interfering Stations Included in above Scenario 1

9A AL ANNISTON	BLCDDT	20050222ACG	LIC
9A FL PANAMA CITY	BLCDDT	20060622AAR	LIC
9A GA COLUMBUS	BPCDDT	20080505ABO	CP
9A LA BATON ROUGE	USERRECORD01		APP

Percent new IX = 0.0017%

Result key: 5

Scenario 2 Affected station 5

Before Analysis

Results for: 9A AL MOBILE BLCDDT 20050316ADI LIC

HAAT 381.0 m, ATV ERP 29.0 kW	POPULATION	AREA (sq km)
within Noise Limited Contour	1207398	35504.5
not affected by terrain losses	1204691	34959.2

lost to NTSC IX	0	0.0
lost to additional IX by ATV	40	30.9
lost to ATV IX only	40	30.9
lost to all IX	40	30.9

Potential Interfering Stations Included in above Scenario 2

9A AL ANNISTON	BLCDT	20050222ACG	LIC
9A FL PANAMA CITY	BLCDT	20060622AAR	LIC
9A GA COLUMBUS	DTVPLN	DTVP0190	PLN

After Analysis

Results for: 9A AL MOBILE BLCDT 20050316ADI LIC
HAAT 381.0 m, ATV ERP 29.0 kW

	POPULATION	AREA (sq km)
within Noise Limited Contour	1207398	35504.5
not affected by terrain losses	1204691	34959.2
lost to NTSC IX	0	0.0
lost to additional IX by ATV	61	43.9
lost to ATV IX only	61	43.9
lost to all IX	61	43.9

Potential Interfering Stations Included in above Scenario 2

9A AL ANNISTON	BLCDT	20050222ACG	LIC
9A FL PANAMA CITY	BLCDT	20060622AAR	LIC
9A GA COLUMBUS	DTVPLN	DTVP0190	PLN
9A LA BATON ROUGE	USERRECORD01		APP

Percent new IX = 0.0017%

Result key: 6
Scenario 3 Affected station 5
Before Analysis

Results for: 9A AL MOBILE BLCDT 20050316ADI LIC
HAAT 381.0 m, ATV ERP 29.0 kW

	POPULATION	AREA (sq km)
within Noise Limited Contour	1207398	35504.5
not affected by terrain losses	1204691	34959.2
lost to NTSC IX	0	0.0
lost to additional IX by ATV	40	30.9
lost to ATV IX only	40	30.9
lost to all IX	40	30.9

Potential Interfering Stations Included in above Scenario 3

9A AL ANNISTON	BLCDT	20050222ACG	LIC
9A FL PANAMA CITY	DTVPLN	DTVP0189	PLN
9A GA COLUMBUS	BPCDT	20080505ABO	CP

After Analysis

Results for: 9A AL MOBILE BLCDT 20050316ADI LIC
HAAT 381.0 m, ATV ERP 29.0 kW

	POPULATION	AREA (sq km)
within Noise Limited Contour	1207398	35504.5
not affected by terrain losses	1204691	34959.2
lost to NTSC IX	0	0.0
lost to additional IX by ATV	61	43.9
lost to ATV IX only	61	43.9
lost to all IX	61	43.9

Potential Interfering Stations Included in above Scenario 3

9A AL ANNISTON	BLCDT	20050222ACG	LIC
9A FL PANAMA CITY	DTVPLN	DTVP0189	PLN
9A GA COLUMBUS	BPCDT	20080505ABO	CP
9A LA BATON ROUGE	USERRECORD01		APP

Percent new IX = 0.0017%

Result key: 7
Scenario 4 Affected station 5
Before Analysis

Results for: 9A AL MOBILE BLCDT 20050316ADI LIC
HAAT 381.0 m, ATV ERP 29.0 kW

	POPULATION	AREA (sq km)
within Noise Limited Contour	1207398	35504.5
not affected by terrain losses	1204691	34959.2
lost to NTSC IX	0	0.0
lost to additional IX by ATV	40	30.9
lost to ATV IX only	40	30.9

lost to all IX 40 30.9

Potential Interfering Stations Included in above Scenario 4

9A AL ANNISTON	BLCDT	20050222ACG	LIC
9A FL PANAMA CITY	DTVPLN	DTVP0189	PLN
9A GA COLUMBUS	DTVPLN	DTVP0190	PLN

After Analysis

Results for: 9A AL MOBILE BLCDT 20050316ADI LIC

HAAT 381.0 m, ATV ERP 29.0 kW	
	POPULATION AREA (sq km)
within Noise Limited Contour	1207398 35504.5
not affected by terrain losses	1204691 34959.2
lost to NTSC IX	0 0.0
lost to additional IX by ATV	61 43.9
lost to ATV IX only	61 43.9
lost to all IX	61 43.9

Potential Interfering Stations Included in above Scenario 4

9A AL ANNISTON	BLCDT	20050222ACG	LIC
9A FL PANAMA CITY	DTVPLN	DTVP0189	PLN
9A GA COLUMBUS	DTVPLN	DTVP0190	PLN
9A LA BATON ROUGE	USERRECORD01		APP

Percent new IX = 0.0017%

Result key: 8
Scenario 5 Affected station 5
Before Analysis

Results for: 9A AL MOBILE BLCDT 20050316ADI LIC

HAAT 381.0 m, ATV ERP 29.0 kW	
	POPULATION AREA (sq km)
within Noise Limited Contour	1207398 35504.5
not affected by terrain losses	1204691 34959.2
lost to NTSC IX	0 0.0
lost to additional IX by ATV	40 30.9
lost to ATV IX only	40 30.9
lost to all IX	40 30.9

Potential Interfering Stations Included in above Scenario 5

9A AL ANNISTON	DTVPLN	DTVP0176	PLN
9A FL PANAMA CITY	BLCDT	20060622AAR	LIC
9A GA COLUMBUS	BPCDT	20080505ABO	CP

After Analysis

Results for: 9A AL MOBILE BLCDT 20050316ADI LIC

HAAT 381.0 m, ATV ERP 29.0 kW	
	POPULATION AREA (sq km)
within Noise Limited Contour	1207398 35504.5
not affected by terrain losses	1204691 34959.2
lost to NTSC IX	0 0.0
lost to additional IX by ATV	61 43.9
lost to ATV IX only	61 43.9
lost to all IX	61 43.9

Potential Interfering Stations Included in above Scenario 5

9A AL ANNISTON	DTVPLN	DTVP0176	PLN
9A FL PANAMA CITY	BLCDT	20060622AAR	LIC
9A GA COLUMBUS	BPCDT	20080505ABO	CP
9A LA BATON ROUGE	USERRECORD01		APP

Percent new IX = 0.0017%

Result key: 9
Scenario 6 Affected station 5
Before Analysis

Results for: 9A AL MOBILE BLCDT 20050316ADI LIC

HAAT 381.0 m, ATV ERP 29.0 kW	
	POPULATION AREA (sq km)
within Noise Limited Contour	1207398 35504.5
not affected by terrain losses	1204691 34959.2
lost to NTSC IX	0 0.0
lost to additional IX by ATV	40 30.9
lost to ATV IX only	40 30.9
lost to all IX	40 30.9

Potential Interfering Stations Included in above Scenario 6

9A AL ANNISTON	DTVPLN	DTVP0176	PLN
9A FL PANAMA CITY	BLCDT	20060622AAR	LIC
9A GA COLUMBUS	DTVPLN	DTVP0190	PLN

After Analysis

Results for: 9A AL MOBILE BLCDT 20050316ADI LIC
HAAT 381.0 m, ATV ERP 29.0 kW

	POPULATION	AREA (sq km)
within Noise Limited Contour	1207398	35504.5
not affected by terrain losses	1204691	34959.2
lost to NTSC IX	0	0.0
lost to additional IX by ATV	61	43.9
lost to ATV IX only	61	43.9
lost to all IX	61	43.9

Potential Interfering Stations Included in above Scenario 6

9A AL ANNISTON	DTVPLN	DTVP0176	PLN
9A FL PANAMA CITY	BLCDT	20060622AAR	LIC
9A GA COLUMBUS	DTVPLN	DTVP0190	PLN
9A LA BATON ROUGE	USERRECORD01		APP

Percent new IX = 0.0017%

Result key: 10
Scenario 7 Affected station 5
Before Analysis

Results for: 9A AL MOBILE BLCDT 20050316ADI LIC
HAAT 381.0 m, ATV ERP 29.0 kW

	POPULATION	AREA (sq km)
within Noise Limited Contour	1207398	35504.5
not affected by terrain losses	1204691	34959.2
lost to NTSC IX	0	0.0
lost to additional IX by ATV	40	30.9
lost to ATV IX only	40	30.9
lost to all IX	40	30.9

Potential Interfering Stations Included in above Scenario 7

9A AL ANNISTON	DTVPLN	DTVP0176	PLN
9A FL PANAMA CITY	DTVPLN	DTVP0189	PLN
9A GA COLUMBUS	BPCDT	20080505ABO	CP

After Analysis

Results for: 9A AL MOBILE BLCDT 20050316ADI LIC
HAAT 381.0 m, ATV ERP 29.0 kW

	POPULATION	AREA (sq km)
within Noise Limited Contour	1207398	35504.5
not affected by terrain losses	1204691	34959.2
lost to NTSC IX	0	0.0
lost to additional IX by ATV	61	43.9
lost to ATV IX only	61	43.9
lost to all IX	61	43.9

Potential Interfering Stations Included in above Scenario 7

9A AL ANNISTON	DTVPLN	DTVP0176	PLN
9A FL PANAMA CITY	DTVPLN	DTVP0189	PLN
9A GA COLUMBUS	BPCDT	20080505ABO	CP
9A LA BATON ROUGE	USERRECORD01		APP

Percent new IX = 0.0017%

Result key: 11
Scenario 8 Affected station 5
Before Analysis

Results for: 9A AL MOBILE BLCDT 20050316ADI LIC
HAAT 381.0 m, ATV ERP 29.0 kW

	POPULATION	AREA (sq km)
within Noise Limited Contour	1207398	35504.5
not affected by terrain losses	1204691	34959.2
lost to NTSC IX	0	0.0
lost to additional IX by ATV	40	30.9
lost to ATV IX only	40	30.9
lost to all IX	40	30.9

Potential Interfering Stations Included in above Scenario 8

9A AL ANNISTON	DTVPLN	DTVP0176	PLN
9A FL PANAMA CITY	DTVPLN	DTVP0189	PLN

9A GA COLUMBUS DTVPLN DTVP0190 PLN

After Analysis

Results for: 9A AL MOBILE BLCDT 20050316ADI LIC

HAAT 381.0 m, ATV ERP 29.0 kW	POPULATION	AREA (sq km)
within Noise Limited Contour	1207398	35504.5
not affected by terrain losses	1204691	34959.2
lost to NTSC IX	0	0.0
lost to additional IX by ATV	61	43.9
lost to ATV IX only	61	43.9
lost to all IX	61	43.9

Potential Interfering Stations Included in above Scenario 8

9A AL ANNISTON	DTVPLN	DTVP0176	PLN
9A FL PANAMA CITY	DTVPLN	DTVP0189	PLN
9A GA COLUMBUS	DTVPLN	DTVP0190	PLN
9A LA BATON ROUGE	USERRECORD01		APP

Percent new IX = 0.0017%
Worst case new IX 0.0017% Scenario 1

#####

Analysis of Interference to Affected Station 6

Analysis of current record

Channel	Call	City/State	Application Ref. No.
09	WALA-TV	MOBILE AL	DTVPLN -DTVP0177

Stations Potentially Affecting This Station

Chan	Call	City/State	Dist(km)	Status	Application Ref. No.
08	WVUE	NEW ORLEANS LA	221.9	PLN	DTVPLN -DTVP0131
08	WVUE	NEW ORLEANS LA	221.9	CP	BPCDT -20080312ACS
09	WJSU-TV	ANNISTON AL	349.5	LIC	BLCDDT -20050222ACG
09	WJSU-TV	ANNISTON AL	349.5	PLN	DTVPLN -DTVP0176
09	WPGX	PANAMA CITY FL	219.2	LIC	BLCDDT -20060622AAR
09	WPGX	PANAMA CITY FL	219.2	PLN	DTVPLN -DTVP0189
09	WTVM	COLUMBUS GA	338.9	CP	BPCDDT -20080505ABO
09	WTVM	COLUMBUS GA	338.9	PLN	DTVPLN -DTVP0190
09	WAFB	BATON ROUGE LA	328.9	PLN	DTVPLN -DTVP0199
10	WDIQ	DOZIER AL	164.8	CP	BPEDT -20080310AEB
10	WDIQ	DOZIER AL	164.8	PLN	DTVPLN -DTVP0238
09	WAFB	BATON ROUGE LA	328.9	APP	USERRECORD-01

Total scenarios = 8

Result key: 12
Scenario 1 Affected station 6
Before Analysis

Results for: 9A AL MOBILE DTVPLN DTVP0177 PLN

HAAT 381.0 m, ATV ERP 29.0 kW	POPULATION	AREA (sq km)
within Noise Limited Contour	1207398	35504.5
not affected by terrain losses	1204691	34959.2
lost to NTSC IX	0	0.0
lost to additional IX by ATV	40	30.9
lost to ATV IX only	40	30.9
lost to all IX	40	30.9

Potential Interfering Stations Included in above Scenario 1

9A AL ANNISTON	BLCDDT	20050222ACG	LIC
9A FL PANAMA CITY	BLCDDT	20060622AAR	LIC
9A GA COLUMBUS	BPCDDT	20080505ABO	CP

After Analysis

Results for: 9A AL MOBILE DTVPLN DTVP0177 PLN

HAAT 381.0 m, ATV ERP 29.0 kW	POPULATION	AREA (sq km)
within Noise Limited Contour	1207398	35504.5
not affected by terrain losses	1204691	34959.2
lost to NTSC IX	0	0.0
lost to additional IX by ATV	61	43.9
lost to ATV IX only	61	43.9
lost to all IX	61	43.9

Potential Interfering Stations Included in above Scenario 1

9A AL ANNISTON	BLCDDT	20050222ACG	LIC
----------------	--------	-------------	-----

9A FL PANAMA CITY	BLCDDT	20060622AAR	LIC
9A GA COLUMBUS	BPCDDT	20080505ABO	CP
9A LA BATON ROUGE	USERRECORD01		APP

Percent new IX = 0.0017%

Result key: 13
Scenario 2 Affected station 6
Before Analysis

Results for: 9A AL MOBILE	DTVPLN	DTVP0177	PLN
HAAT 381.0 m, ATV ERP 29.0 kW			
	POPULATION	AREA (sq km)	
within Noise Limited Contour	1207398	35504.5	
not affected by terrain losses	1204691	34959.2	
lost to NTSC IX	0	0.0	
lost to additional IX by ATV	40	30.9	
lost to ATV IX only	40	30.9	
lost to all IX	40	30.9	

Potential Interfering Stations Included in above Scenario 2

9A AL ANNISTON	BLCDDT	20050222ACG	LIC
9A FL PANAMA CITY	BLCDDT	20060622AAR	LIC
9A GA COLUMBUS	DTVPLN	DTVP0190	PLN

After Analysis

Results for: 9A AL MOBILE	DTVPLN	DTVP0177	PLN
HAAT 381.0 m, ATV ERP 29.0 kW			
	POPULATION	AREA (sq km)	
within Noise Limited Contour	1207398	35504.5	
not affected by terrain losses	1204691	34959.2	
lost to NTSC IX	0	0.0	
lost to additional IX by ATV	61	43.9	
lost to ATV IX only	61	43.9	
lost to all IX	61	43.9	

Potential Interfering Stations Included in above Scenario 2

9A AL ANNISTON	BLCDDT	20050222ACG	LIC
9A FL PANAMA CITY	BLCDDT	20060622AAR	LIC
9A GA COLUMBUS	DTVPLN	DTVP0190	PLN
9A LA BATON ROUGE	USERRECORD01		APP

Percent new IX = 0.0017%

Result key: 14
Scenario 3 Affected station 6
Before Analysis

Results for: 9A AL MOBILE	DTVPLN	DTVP0177	PLN
HAAT 381.0 m, ATV ERP 29.0 kW			
	POPULATION	AREA (sq km)	
within Noise Limited Contour	1207398	35504.5	
not affected by terrain losses	1204691	34959.2	
lost to NTSC IX	0	0.0	
lost to additional IX by ATV	40	30.9	
lost to ATV IX only	40	30.9	
lost to all IX	40	30.9	

Potential Interfering Stations Included in above Scenario 3

9A AL ANNISTON	BLCDDT	20050222ACG	LIC
9A FL PANAMA CITY	DTVPLN	DTVP0189	PLN
9A GA COLUMBUS	BPCDDT	20080505ABO	CP

After Analysis

Results for: 9A AL MOBILE	DTVPLN	DTVP0177	PLN
HAAT 381.0 m, ATV ERP 29.0 kW			
	POPULATION	AREA (sq km)	
within Noise Limited Contour	1207398	35504.5	
not affected by terrain losses	1204691	34959.2	
lost to NTSC IX	0	0.0	
lost to additional IX by ATV	61	43.9	
lost to ATV IX only	61	43.9	
lost to all IX	61	43.9	

Potential Interfering Stations Included in above Scenario 3

9A AL ANNISTON	BLCDDT	20050222ACG	LIC
9A FL PANAMA CITY	DTVPLN	DTVP0189	PLN
9A GA COLUMBUS	BPCDDT	20080505ABO	CP
9A LA BATON ROUGE	USERRECORD01		APP

Percent new IX = 0.0017%

Result key: 15
Scenario 4 Affected station 6
Before Analysis

Results for: 9A AL MOBILE DTVPLN DTVP0177 PLN
HAAT 381.0 m, ATV ERP 29.0 kW
POPULATION AREA (sq km)
within Noise Limited Contour 1207398 35504.5
not affected by terrain losses 1204691 34959.2
lost to NTSC IX 0 0.0
lost to additional IX by ATV 40 30.9
lost to ATV IX only 40 30.9
lost to all IX 40 30.9

Potential Interfering Stations Included in above Scenario 4

9A AL ANNISTON BLC DT 20050222ACG LIC
9A FL PANAMA CITY DTVPLN DTVP0189 PLN
9A GA COLUMBUS DTVPLN DTVP0190 PLN

After Analysis

Results for: 9A AL MOBILE DTVPLN DTVP0177 PLN
HAAT 381.0 m, ATV ERP 29.0 kW
POPULATION AREA (sq km)
within Noise Limited Contour 1207398 35504.5
not affected by terrain losses 1204691 34959.2
lost to NTSC IX 0 0.0
lost to additional IX by ATV 61 43.9
lost to ATV IX only 61 43.9
lost to all IX 61 43.9

Potential Interfering Stations Included in above Scenario 4

9A AL ANNISTON BLC DT 20050222ACG LIC
9A FL PANAMA CITY DTVPLN DTVP0189 PLN
9A GA COLUMBUS DTVPLN DTVP0190 PLN
9A LA BATON ROUGE USERRECORD01 APP

Percent new IX = 0.0017%

Result key: 16
Scenario 5 Affected station 6
Before Analysis

Results for: 9A AL MOBILE DTVPLN DTVP0177 PLN
HAAT 381.0 m, ATV ERP 29.0 kW
POPULATION AREA (sq km)
within Noise Limited Contour 1207398 35504.5
not affected by terrain losses 1204691 34959.2
lost to NTSC IX 0 0.0
lost to additional IX by ATV 40 30.9
lost to ATV IX only 40 30.9
lost to all IX 40 30.9

Potential Interfering Stations Included in above Scenario 5

9A AL ANNISTON DTVPLN DTVP0176 PLN
9A FL PANAMA CITY BLC DT 20060622AAR LIC
9A GA COLUMBUS BPC DT 20080505ABO CP

After Analysis

Results for: 9A AL MOBILE DTVPLN DTVP0177 PLN
HAAT 381.0 m, ATV ERP 29.0 kW
POPULATION AREA (sq km)
within Noise Limited Contour 1207398 35504.5
not affected by terrain losses 1204691 34959.2
lost to NTSC IX 0 0.0
lost to additional IX by ATV 61 43.9
lost to ATV IX only 61 43.9
lost to all IX 61 43.9

Potential Interfering Stations Included in above Scenario 5

9A AL ANNISTON DTVPLN DTVP0176 PLN
9A FL PANAMA CITY BLC DT 20060622AAR LIC
9A GA COLUMBUS BPC DT 20080505ABO CP
9A LA BATON ROUGE USERRECORD01 APP

Percent new IX = 0.0017%

Result key: 17
Scenario 6 Affected station 6
Before Analysis

Results for: 9A AL MOBILE DTVP0177 PLN
HAAT 381.0 m, ATV ERP 29.0 kW
POPULATION AREA (sq km)
within Noise Limited Contour 1207398 35504.5
not affected by terrain losses 1204691 34959.2
lost to NTSC IX 0 0.0
lost to additional IX by ATV 40 30.9
lost to ATV IX only 40 30.9
lost to all IX 40 30.9

Potential Interfering Stations Included in above Scenario 6

9A AL ANNISTON DTVP0176 PLN
9A FL PANAMA CITY BLCDT 20060622AAR LIC
9A GA COLUMBUS DTVP0190 PLN

After Analysis

Results for: 9A AL MOBILE DTVP0177 PLN
HAAT 381.0 m, ATV ERP 29.0 kW
POPULATION AREA (sq km)
within Noise Limited Contour 1207398 35504.5
not affected by terrain losses 1204691 34959.2
lost to NTSC IX 0 0.0
lost to additional IX by ATV 61 43.9
lost to ATV IX only 61 43.9
lost to all IX 61 43.9

Potential Interfering Stations Included in above Scenario 6

9A AL ANNISTON DTVP0176 PLN
9A FL PANAMA CITY BLCDT 20060622AAR LIC
9A GA COLUMBUS DTVP0190 PLN
9A LA BATON ROUGE USERRECORD01 APP

Percent new IX = 0.0017%

Result key: 18
Scenario 7 Affected station 6
Before Analysis

Results for: 9A AL MOBILE DTVP0177 PLN
HAAT 381.0 m, ATV ERP 29.0 kW
POPULATION AREA (sq km)
within Noise Limited Contour 1207398 35504.5
not affected by terrain losses 1204691 34959.2
lost to NTSC IX 0 0.0
lost to additional IX by ATV 40 30.9
lost to ATV IX only 40 30.9
lost to all IX 40 30.9

Potential Interfering Stations Included in above Scenario 7

9A AL ANNISTON DTVP0176 PLN
9A FL PANAMA CITY DTVP0189 PLN
9A GA COLUMBUS BPCDT 20080505ABO CP

After Analysis

Results for: 9A AL MOBILE DTVP0177 PLN
HAAT 381.0 m, ATV ERP 29.0 kW
POPULATION AREA (sq km)
within Noise Limited Contour 1207398 35504.5
not affected by terrain losses 1204691 34959.2
lost to NTSC IX 0 0.0
lost to additional IX by ATV 61 43.9
lost to ATV IX only 61 43.9
lost to all IX 61 43.9

Potential Interfering Stations Included in above Scenario 7

9A AL ANNISTON DTVP0176 PLN
9A FL PANAMA CITY DTVP0189 PLN
9A GA COLUMBUS BPCDT 20080505ABO CP
9A LA BATON ROUGE USERRECORD01 APP

Percent new IX = 0.0017%

Result key: 19
Scenario 8 Affected station 6
Before Analysis

Results for: 9A AL MOBILE DTVPLN DTVP0177 PLN
 HAAT 381.0 m, ATV ERP 29.0 kW

	POPULATION	AREA (sq km)
within Noise Limited Contour	1207398	35504.5
not affected by terrain losses	1204691	34959.2
lost to NTSC IX	0	0.0
lost to additional IX by ATV	40	30.9
lost to ATV IX only	40	30.9
lost to all IX	40	30.9

Potential Interfering Stations Included in above Scenario 8

9A AL ANNISTON	DTVPLN	DTVP0176	PLN
9A FL PANAMA CITY	DTVPLN	DTVP0189	PLN
9A GA COLUMBUS	DTVPLN	DTVP0190	PLN

After Analysis

Results for: 9A AL MOBILE DTVPLN DTVP0177 PLN
 HAAT 381.0 m, ATV ERP 29.0 kW

	POPULATION	AREA (sq km)
within Noise Limited Contour	1207398	35504.5
not affected by terrain losses	1204691	34959.2
lost to NTSC IX	0	0.0
lost to additional IX by ATV	61	43.9
lost to ATV IX only	61	43.9
lost to all IX	61	43.9

Potential Interfering Stations Included in above Scenario 8

9A AL ANNISTON	DTVPLN	DTVP0176	PLN
9A FL PANAMA CITY	DTVPLN	DTVP0189	PLN
9A GA COLUMBUS	DTVPLN	DTVP0190	PLN
9A LA BATON ROUGE	USERRECORD01		APP

Percent new IX = 0.0017%
 Worst case new IX 0.0017% Scenario 1

#####

Analysis of Interference to Affected Station 7

Analysis of current record

Channel	Call	City/State	Application	Ref. No.
09	KTRE	LUFKIN TX	BPCDT	-20080516ABZ

Stations Potentially Affecting This Station

Chan	Call	City/State	Dist(km)	Status	Application	Ref. No.
08	KUHT	HOUSTON TX	215.5	CP	BPEDT	-20080314ABU
08	KUHT	HOUSTON TX	215.5	PLN	DTVPLN	-DTVP0167
09	WAFB	BATON ROUGE LA	361.6	PLN	DTVPLN	-DTVP0199
09	KFWD	FORT WORTH TX	242.1	CP	BPCDT	-20080312ACF
09	KFWD	FORT WORTH TX	242.1	PLN	DTVPLN	-DTVP0224
09	KLRN	SAN ANTONIO TX	412.5	PLN	DTVPLN	-DTVP0227
09	KLRN	SAN ANTONIO TX	412.5	APP	BPEDT	-20080306ABB
09	KLRN	SAN ANTONIO TX	412.5	APP	BPEDT	-20080306ABB
09	KCEN-TV	TEMPLE TX	230.3	LIC	BLCDT	-20021010AAB
09	KCEN-TV	TEMPLE TX	230.3	PLN	DTVPLN	-DTVP0228
09	WAFB	BATON ROUGE LA	361.6	APP	USERRECORD-01	

Total scenarios = 4

Result key: 20
 Scenario 1 Affected station 7
 Before Analysis

Results for: 9A TX LUFKIN BPCDT 20080516ABZ CP
 HAAT 204.0 m, ATV ERP 10.0 kW

	POPULATION	AREA (sq km)
within Noise Limited Contour	343513	22677.4
not affected by terrain losses	320004	20812.9
lost to NTSC IX	0	0.0
lost to additional IX by ATV	17565	645.9
lost to ATV IX only	17565	645.9
lost to all IX	17565	645.9

Potential Interfering Stations Included in above Scenario 1

9A TX FORT WORTH	BPCDT	20080312ACF	CP
9A TX TEMPLE	BLCDT	20021010AAB	LIC

After Analysis

Results for: 9A TX LUFKIN BPCDT 20080516ABZ CP
HAAT 204.0 m, ATV ERP 10.0 kW

	POPULATION	AREA (sq km)
within Noise Limited Contour	343513	22677.4
not affected by terrain losses	320004	20812.9
lost to NTSC IX	0	0.0
lost to additional IX by ATV	17615	651.9
lost to ATV IX only	17615	651.9
lost to all IX	17615	651.9

Potential Interfering Stations Included in above Scenario 1

9A TX FORT WORTH	BPCDT	20080312ACF	CP
9A TX TEMPLE	BLCDT	20021010AAB	LIC
9A LA BATON ROUGE	USERRECORD01		APP

Percent new IX = 0.0165%

Result key: 21
Scenario 2 Affected station 7
Before Analysis

Results for: 9A TX LUFKIN BPCDT 20080516ABZ CP
HAAT 204.0 m, ATV ERP 10.0 kW

	POPULATION	AREA (sq km)
within Noise Limited Contour	343513	22677.4
not affected by terrain losses	320004	20812.9
lost to NTSC IX	0	0.0
lost to additional IX by ATV	17565	645.9
lost to ATV IX only	17565	645.9
lost to all IX	17565	645.9

Potential Interfering Stations Included in above Scenario 2

9A TX FORT WORTH	BPCDT	20080312ACF	CP
9A TX TEMPLE	DTVPLN	DTVP0228	PLN

After Analysis

Results for: 9A TX LUFKIN BPCDT 20080516ABZ CP
HAAT 204.0 m, ATV ERP 10.0 kW

	POPULATION	AREA (sq km)
within Noise Limited Contour	343513	22677.4
not affected by terrain losses	320004	20812.9
lost to NTSC IX	0	0.0
lost to additional IX by ATV	17615	651.9
lost to ATV IX only	17615	651.9
lost to all IX	17615	651.9

Potential Interfering Stations Included in above Scenario 2

9A TX FORT WORTH	BPCDT	20080312ACF	CP
9A TX TEMPLE	DTVPLN	DTVP0228	PLN
9A LA BATON ROUGE	USERRECORD01		APP

Percent new IX = 0.0165%

Result key: 22
Scenario 3 Affected station 7
Before Analysis

Results for: 9A TX LUFKIN BPCDT 20080516ABZ CP
HAAT 204.0 m, ATV ERP 10.0 kW

	POPULATION	AREA (sq km)
within Noise Limited Contour	343513	22677.4
not affected by terrain losses	320004	20812.9
lost to NTSC IX	0	0.0
lost to additional IX by ATV	15610	576.7
lost to ATV IX only	15610	576.7
lost to all IX	15610	576.7

Potential Interfering Stations Included in above Scenario 3

9A TX FORT WORTH	DTVPLN	DTVP0224	PLN
9A TX TEMPLE	BLCDT	20021010AAB	LIC

After Analysis

Results for: 9A TX LUFKIN BPCDT 20080516ABZ CP
HAAT 204.0 m, ATV ERP 10.0 kW

	POPULATION	AREA (sq km)
within Noise Limited Contour	343513	22677.4
not affected by terrain losses	320004	20812.9
lost to NTSC IX	0	0.0
lost to additional IX by ATV	15660	582.6

lost to ATV IX only	15660	582.6
lost to all IX	15660	582.6

Potential Interfering Stations Included in above Scenario 3

9A TX FORT WORTH	DTVPLN	DTVP0224	PLN
9A TX TEMPLE	BLCDDT	20021010AAB	LIC
9A LA BATON ROUGE	USERRECORD01		APP

Percent new IX = 0.0164%

Result key: 23
Scenario 4 Affected station 7
Before Analysis

Results for: 9A TX LUFKIN BPCDDT 20080516ABZ CP
HAAT 204.0 m, ATV ERP 10.0 kW

	POPULATION	AREA (sq km)
within Noise Limited Contour	343513	22677.4
not affected by terrain losses	320004	20812.9
lost to NTSC IX	0	0.0
lost to additional IX by ATV	15610	576.7
lost to ATV IX only	15610	576.7
lost to all IX	15610	576.7

Potential Interfering Stations Included in above Scenario 4

9A TX FORT WORTH	DTVPLN	DTVP0224	PLN
9A TX TEMPLE	DTVPLN	DTVP0228	PLN

After Analysis

Results for: 9A TX LUFKIN BPCDDT 20080516ABZ CP

	POPULATION	AREA (sq km)
HAAT 204.0 m, ATV ERP 10.0 kW		
within Noise Limited Contour	343513	22677.4
not affected by terrain losses	320004	20812.9
lost to NTSC IX	0	0.0
lost to additional IX by ATV	15660	582.6
lost to ATV IX only	15660	582.6
lost to all IX	15660	582.6

Potential Interfering Stations Included in above Scenario 4

9A TX FORT WORTH	DTVPLN	DTVP0224	PLN
9A TX TEMPLE	DTVPLN	DTVP0228	PLN
9A LA BATON ROUGE	USERRECORD01		APP

Percent new IX = 0.0164%
Worst case new IX 0.0165% Scenario 1

#####

Analysis of Interference to Affected Station 8

Analysis of current record

Channel	Call	City/State	Application	Ref. No.
09	KTRE	LUFKIN TX	DTVPLN	-DTVP0225

Stations Potentially Affecting This Station

Chan	Call	City/State	Dist(km)	Status	Application	Ref. No.
08	KUHT	HOUSTON TX	215.5	CP	BPEDT	-20080314ABU
08	KUHT	HOUSTON TX	215.5	PLN	DTVPLN	-DTVP0167
09	WAFB	BATON ROUGE LA	361.6	PLN	DTVPLN	-DTVP0199
09	KFWD	FORT WORTH TX	242.1	CP	BPCDDT	-20080312ACF
09	KFWD	FORT WORTH TX	242.1	PLN	DTVPLN	-DTVP0224
09	KLRN	SAN ANTONIO TX	412.5	PLN	DTVPLN	-DTVP0227
09	KLRN	SAN ANTONIO TX	412.5	APP	BPEDT	-20080306ABB
09	KLRN	SAN ANTONIO TX	412.5	APP	BPEDT	-20080306ABB
09	KCEN-TV	TEMPLE TX	230.3	LIC	BLCDDT	-20021010AAB
09	KCEN-TV	TEMPLE TX	230.3	PLN	DTVPLN	-DTVP0228
09	WAFB	BATON ROUGE LA	361.6	APP	USERRECORD-01	

Total scenarios = 4

Result key: 24
Scenario 1 Affected station 8
Before Analysis

Results for: 9A TX LUFKIN DTVPLN DTVP0225 PLN

	POPULATION	AREA (sq km)
HAAT 204.0 m, ATV ERP 10.0 kW		
within Noise Limited Contour	343513	22677.4
not affected by terrain losses	320004	20812.9

lost to NTSC IX	0	0.0
lost to additional IX by ATV	17565	645.9
lost to ATV IX only	17565	645.9
lost to all IX	17565	645.9

Potential Interfering Stations Included in above Scenario 1

9A TX FORT WORTH	BPCDT	20080312ACF	CP
9A TX TEMPLE	BLCDT	20021010AAB	LIC

After Analysis

Results for:	9A TX LUFKIN	DTVPLN	DTVP0225	PLN
HAAT	204.0 m, ATV ERP	10.0 kW		
	POPULATION	AREA (sq km)		
within Noise Limited Contour	343513	22677.4		
not affected by terrain losses	320004	20812.9		
lost to NTSC IX	0	0.0		
lost to additional IX by ATV	17615	651.9		
lost to ATV IX only	17615	651.9		
lost to all IX	17615	651.9		

Potential Interfering Stations Included in above Scenario 1

9A TX FORT WORTH	BPCDT	20080312ACF	CP
9A TX TEMPLE	BLCDT	20021010AAB	LIC
9A LA BATON ROUGE	USERRECORD01		APP

Percent new IX = 0.0165%

Result key: 25
Scenario 2 Affected station 8
Before Analysis

Results for:	9A TX LUFKIN	DTVPLN	DTVP0225	PLN
HAAT	204.0 m, ATV ERP	10.0 kW		
	POPULATION	AREA (sq km)		
within Noise Limited Contour	343513	22677.4		
not affected by terrain losses	320004	20812.9		
lost to NTSC IX	0	0.0		
lost to additional IX by ATV	17565	645.9		
lost to ATV IX only	17565	645.9		
lost to all IX	17565	645.9		

Potential Interfering Stations Included in above Scenario 2

9A TX FORT WORTH	BPCDT	20080312ACF	CP
9A TX TEMPLE	DTVPLN	DTVP0228	PLN

After Analysis

Results for:	9A TX LUFKIN	DTVPLN	DTVP0225	PLN
HAAT	204.0 m, ATV ERP	10.0 kW		
	POPULATION	AREA (sq km)		
within Noise Limited Contour	343513	22677.4		
not affected by terrain losses	320004	20812.9		
lost to NTSC IX	0	0.0		
lost to additional IX by ATV	17615	651.9		
lost to ATV IX only	17615	651.9		
lost to all IX	17615	651.9		

Potential Interfering Stations Included in above Scenario 2

9A TX FORT WORTH	BPCDT	20080312ACF	CP
9A TX TEMPLE	DTVPLN	DTVP0228	PLN
9A LA BATON ROUGE	USERRECORD01		APP

Percent new IX = 0.0165%

Result key: 26
Scenario 3 Affected station 8
Before Analysis

Results for:	9A TX LUFKIN	DTVPLN	DTVP0225	PLN
HAAT	204.0 m, ATV ERP	10.0 kW		
	POPULATION	AREA (sq km)		
within Noise Limited Contour	343513	22677.4		
not affected by terrain losses	320004	20812.9		
lost to NTSC IX	0	0.0		
lost to additional IX by ATV	15610	576.7		
lost to ATV IX only	15610	576.7		
lost to all IX	15610	576.7		

Potential Interfering Stations Included in above Scenario 3

9A TX FORT WORTH	DTVPLN	DTVP0224	PLN
9A TX TEMPLE	BLCDDT	20021010AAB	LIC

After Analysis

Results for: 9A TX LUFKIN DTVPLN DTVP0225 PLN
HAAT 204.0 m, ATV ERP 10.0 kW

	POPULATION	AREA (sq km)
within Noise Limited Contour	343513	22677.4
not affected by terrain losses	320004	20812.9
lost to NTSC IX	0	0.0
lost to additional IX by ATV	15660	582.6
lost to ATV IX only	15660	582.6
lost to all IX	15660	582.6

Potential Interfering Stations Included in above Scenario 3

9A TX FORT WORTH	DTVPLN	DTVP0224	PLN
9A TX TEMPLE	BLCDDT	20021010AAB	LIC
9A LA BATON ROUGE	USERRECORD01		APP

Percent new IX = 0.0164%

Result key: 27
Scenario 4 Affected station 8
Before Analysis

Results for: 9A TX LUFKIN DTVPLN DTVP0225 PLN
HAAT 204.0 m, ATV ERP 10.0 kW

	POPULATION	AREA (sq km)
within Noise Limited Contour	343513	22677.4
not affected by terrain losses	320004	20812.9
lost to NTSC IX	0	0.0
lost to additional IX by ATV	15610	576.7
lost to ATV IX only	15610	576.7
lost to all IX	15610	576.7

Potential Interfering Stations Included in above Scenario 4

9A TX FORT WORTH	DTVPLN	DTVP0224	PLN
9A TX TEMPLE	DTVPLN	DTVP0228	PLN

After Analysis

Results for: 9A TX LUFKIN DTVPLN DTVP0225 PLN
HAAT 204.0 m, ATV ERP 10.0 kW

	POPULATION	AREA (sq km)
within Noise Limited Contour	343513	22677.4
not affected by terrain losses	320004	20812.9
lost to NTSC IX	0	0.0
lost to additional IX by ATV	15660	582.6
lost to ATV IX only	15660	582.6
lost to all IX	15660	582.6

Potential Interfering Stations Included in above Scenario 4

9A TX FORT WORTH	DTVPLN	DTVP0224	PLN
9A TX TEMPLE	DTVPLN	DTVP0228	PLN
9A LA BATON ROUGE	USERRECORD01		APP

Percent new IX = 0.0164%

Worst case new IX 0.0165% Scenario 1

#####

Analysis of Interference to Affected Station 9

Analysis of current record

Channel	Call	City/State	Application Ref. No.
10	KLFY-TV	LAFAYETTE LA	DTVPLN -DTVP0260

Stations Potentially Affecting This Station

Chan	Call	City/State	Dist(km)	Status	Application Ref. No.
09	WAFB	BATON ROUGE LA	102.8	PLN	DTVPLN -DTVP0199
10	KETZ	EL DORADO AR	306.4	PLN	DTVPLN -DTVP0239
10	KETZ	EL DORADO AR	306.4	CP	BPEDT -20080318ACS
11	KAQY	COLUMBIA LA	197.3	CP	BPCDDT -20070822ACN
11	KAQY	COLUMBIA LA	192.9	PLN	DTVPLN -DTVP0319
11	WYES-TV	NEW ORLEANS LA	228.0	LIC	BLEDT -20040804AFR
11	WYES-TV	NEW ORLEANS LA	228.0	PLN	DTVPLN -DTVP0320
09	WAFB	BATON ROUGE LA	102.8	APP	USERRECORD-01

Total scenarios = 2

Result key: 28
Scenario 1 Affected station 9
Before Analysis

Results for: 10A LA LAFAYETTE DTVPLN DTVP0260 PLN
HAAT 507.0 m, ATV ERP 17.2 kW
POPULATION AREA (sq km)
within Noise Limited Contour 1188522 39288.2
not affected by terrain losses 1188337 39255.2
lost to NTSC IX 0 0.0
lost to additional IX by ATV 19564 29.0
lost to ATV IX only 19564 29.0
lost to all IX 19564 29.0

Potential Interfering Stations Included in above Scenario 1

10A AR EL DORADO DTVPLN DTVP0239 PLN
9A LA BATON ROUGE DTVPLN DTVP0199 PLN

After Analysis

Results for: 10A LA LAFAYETTE DTVPLN DTVP0260 PLN
HAAT 507.0 m, ATV ERP 17.2 kW
POPULATION AREA (sq km)
within Noise Limited Contour 1188522 39288.2
not affected by terrain losses 1188337 39255.2
lost to NTSC IX 0 0.0
lost to additional IX by ATV 101751 307.2
lost to ATV IX only 101751 307.2
lost to all IX 101751 307.2

Potential Interfering Stations Included in above Scenario 1

10A AR EL DORADO DTVPLN DTVP0239 PLN
9A LA BATON ROUGE USERRECORD01 APP

The following station failed the de minimis interference criteria.

9D LA BATON ROUGE USERRECORD01
ERP 5.57 kW HAAT 511.0 m RCMSL 517.0 m
Antenna none

Due to interference to the following station and scenario: 1

10D LA LAFAYETTE DTVPLN DTVP0260
ERP 17.22 kW HAAT 507.0 m RCMSL 516.0 m
Antenna CDB 0000000074641

Percent new interference from proposal: 7.0319 to DTVPLN DTVP0260

Result key: 29
Scenario 2 Affected station 9
Before Analysis

Results for: 10A LA LAFAYETTE DTVPLN DTVP0260 PLN
HAAT 507.0 m, ATV ERP 17.2 kW
POPULATION AREA (sq km)
within Noise Limited Contour 1188522 39288.2
not affected by terrain losses 1188337 39255.2
lost to NTSC IX 0 0.0
lost to additional IX by ATV 19564 29.0
lost to ATV IX only 19564 29.0
lost to all IX 19564 29.0

Potential Interfering Stations Included in above Scenario 2

10A AR EL DORADO BPEDT 20080318ACS CP
9A LA BATON ROUGE DTVPLN DTVP0199 PLN

After Analysis

Results for: 10A LA LAFAYETTE DTVPLN DTVP0260 PLN
HAAT 507.0 m, ATV ERP 17.2 kW
POPULATION AREA (sq km)
within Noise Limited Contour 1188522 39288.2
not affected by terrain losses 1188337 39255.2
lost to NTSC IX 0 0.0
lost to additional IX by ATV 101751 307.2
lost to ATV IX only 101751 307.2
lost to all IX 101751 307.2

Potential Interfering Stations Included in above Scenario 2

10A AR EL DORADO BPEDT 20080318ACS CP
9A LA BATON ROUGE USERRECORD01 APP

The following station failed the de minimis interference criteria.

9D LA BATON ROUGE USERRECORD01
ERP 5.57 kW HAAT 511.0 m RCAMSL 517.0 m
Antenna none

Due to interference to the following station and scenario: 2

10D LA LAFAYETTE DTVPLN DTVP0260
ERP 17.22 kW HAAT 507.0 m RCAMSL 516.0 m
Antenna CDB 0000000074641

Percent new interference from proposal: 7.0319 to DTVPLN DTVP0260
Worst case new IX 7.0319% Scenario 1

#####

Analysis of Interference to Affected Station 10

Analysis of current record

Channel	Call	City/State	Application	Ref. No.
10	KLFY-TV	LAFAYETTE LA	BPCDT	-20080313AAQ

Stations Potentially Affecting This Station

Chan	Call	City/State	Dist(km)	Status	Application	Ref. No.
09	WAFB	BATON ROUGE LA	102.8	PLN	DTVPLN	-DTV0199
10	KETZ	EL DORADO AR	306.4	PLN	DTVPLN	-DTV0239
10	KETZ	EL DORADO AR	306.4	CP	BPEDT	-20080318ACS
11	KAQY	COLUMBIA LA	197.3	CP	BPCDT	-20070822ACN
11	KAQY	COLUMBIA LA	192.9	PLN	DTVPLN	-DTV0319
11	WYES-TV	NEW ORLEANS LA	228.0	LIC	BLEDT	-20040804AFR
11	WYES-TV	NEW ORLEANS LA	228.0	PLN	DTVPLN	-DTV0320
09	WAFB	BATON ROUGE LA	102.8	APP	USERRECORD-01	

Total scenarios = 2

Result key: 30

Scenario 1 Affected station 10
Before Analysis

Results for: 10A LA LAFAYETTE BPCDT 20080313AAQ CP
HAAT 527.0 m, ATV ERP 19.6 kW

	POPULATION	AREA (sq km)
within Noise Limited Contour	1283058	40882.0
not affected by terrain losses	1282790	40843.0
lost to NTSC IX	0	0.0
lost to additional IX by ATV	36160	50.0
lost to ATV IX only	36160	50.0
lost to all IX	36160	50.0

Potential Interfering Stations Included in above Scenario 1

10A AR EL DORADO	DTVPLN	DTV0239	PLN
9A LA BATON ROUGE	DTVPLN	DTV0199	PLN

After Analysis

Results for: 10A LA LAFAYETTE BPCDT 20080313AAQ CP
HAAT 527.0 m, ATV ERP 19.6 kW

	POPULATION	AREA (sq km)
within Noise Limited Contour	1283058	40882.0
not affected by terrain losses	1282790	40843.0
lost to NTSC IX	0	0.0
lost to additional IX by ATV	112117	319.2
lost to ATV IX only	112117	319.2
lost to all IX	112117	319.2

Potential Interfering Stations Included in above Scenario 1

10A AR EL DORADO	DTVPLN	DTV0239	PLN
9A LA BATON ROUGE	USERRECORD01		APP

The following station failed the de minimis interference criteria.

9D LA BATON ROUGE USERRECORD01
ERP 5.57 kW HAAT 511.0 m RCAMSL 517.0 m
Antenna none

Due to interference to the following station and scenario: 1

10D LA LAFAYETTE BPCDT 20080313AAQ
ERP 19.60 kW HAAT 527.0 m RCAMSL 537.0 m
Antenna CDB 99999999999999

Percent new interference from proposal: 6.0930 to BPCDT 20080313AAQ

Result key: 31

Scenario 2 Affected station 10

Before Analysis

Results for: 10A LA LAFAYETTE BPCDT 20080313AAQ CP
 HAAT 527.0 m, ATV ERP 19.6 kW

	POPULATION	AREA (sq km)
within Noise Limited Contour	1283058	40882.0
not affected by terrain losses	1282790	40843.0
lost to NTSC IX	0	0.0
lost to additional IX by ATV	36160	52.0
lost to ATV IX only	36160	52.0
lost to all IX	36160	52.0

Potential Interfering Stations Included in above Scenario 2

10A AR EL DORADO BPEDT 20080318ACS CP
 9A LA BATON ROUGE DTVPLN DTVP0199 PLN

After Analysis

Results for: 10A LA LAFAYETTE BPCDT 20080313AAQ CP
 HAAT 527.0 m, ATV ERP 19.6 kW

	POPULATION	AREA (sq km)
within Noise Limited Contour	1283058	40882.0
not affected by terrain losses	1282790	40843.0
lost to NTSC IX	0	0.0
lost to additional IX by ATV	112117	321.2
lost to ATV IX only	112117	321.2
lost to all IX	112117	321.2

Potential Interfering Stations Included in above Scenario 2

10A AR EL DORADO BPEDT 20080318ACS CP
 9A LA BATON ROUGE USERRECORD01 APP

The following station failed the de minimis interference criteria.

9D LA BATON ROUGE USERRECORD01
 ERP 5.57 kW HAAT 511.0 m RCAMSL 517.0 m
 Antenna none

Due to interference to the following station and scenario: 2

10D LA LAFAYETTE BPCDT 20080313AAQ
 ERP 19.60 kW HAAT 527.0 m RCAMSL 537.0 m
 Antenna CDB 9999999999999999

Percent new interference from proposal: 6.0930 to BPCDT 20080313AAQ
 Worst case new IX 6.0930% Scenario 1

 Analysis of Interference to Affected Station 11

Analysis of current record

Channel	Call	City/State	Application Ref. No.
09	WAFB	BATON ROUGE LA	USERRECORD-01

Stations Potentially Affecting This Station

Chan	Call	City/State	Dist(km)	Status	Application Ref. No.
08	KNOE-TV	MONROE LA	219.2	PLN	DTVPLN -DTV0130
08	KNOE-TV	MONROE LA	219.2	CP	BPCDT -20080214ABZ
08	WVUE	NEW ORLEANS LA	129.8	PLN	DTVPLN -DTV0131
08	WVUE	NEW ORLEANS LA	129.8	CP	BPCDT -20080312ACS
09	WALA-TV	MOBILE AL	328.9	LIC	BLCDT -20050316ADI
09	WALA-TV	MOBILE AL	328.9	PLN	DTVPLN -DTV0177
09	KTRE	LUFKIN TX	361.6	CP	BPCDT -20080516ABZ
09	KTRE	LUFKIN TX	361.6	PLN	DTVPLN -DTV0225
10	KLFY-TV	LAFAYETTE LA	102.8	PLN	DTVPLN -DTV0260
10	KLFY-TV	LAFAYETTE LA	102.8	CP	BPCDT -20080313AAQ

Total scenarios = 8

Result key: 32
 Scenario 1 Affected station 11
 Before Analysis

Results for: 9A LA BATON ROUGE USERRECORD01 APP
 HAAT 511.0 m, ATV ERP 5.6 kW

	POPULATION	AREA (sq km)
within Noise Limited Contour	1679761	33097.5
not affected by terrain losses	1679224	32861.5
lost to NTSC IX	0	0.0
lost to additional IX by ATV	113354	1195.2
lost to ATV IX only	113354	1195.2
lost to all IX	113354	1195.2

Potential Interfering Stations Included in above Scenario 1

8A LA NEW ORLEANS	DTVPLN	DTVP0131	PLN
9A AL MOBILE	BLCDDT	20050316ADI	LIC
10A LA LAFAYETTE	DTVPLN	DTVP0260	PLN

Result key: 33
Scenario 2 Affected station 11
Before Analysis

Results for: 9A LA BATON ROUGE USERRECORD01 APP
HAAT 511.0 m, ATV ERP 5.6 kW

	POPULATION	AREA (sq km)
within Noise Limited Contour	1679761	33097.5
not affected by terrain losses	1679224	32861.5
lost to NTSC IX	0	0.0
lost to additional IX by ATV	118429	1299.2
lost to ATV IX only	118429	1299.2
lost to all IX	118429	1299.2

Potential Interfering Stations Included in above Scenario 2

8A LA NEW ORLEANS	DTVPLN	DTVP0131	PLN
9A AL MOBILE	BLCDDT	20050316ADI	LIC
10A LA LAFAYETTE	BPCDDT	20080313AAQ	CP

Result key: 34
Scenario 3 Affected station 11
Before Analysis

Results for: 9A LA BATON ROUGE USERRECORD01 APP
HAAT 511.0 m, ATV ERP 5.6 kW

	POPULATION	AREA (sq km)
within Noise Limited Contour	1679761	33097.5
not affected by terrain losses	1679224	32861.5
lost to NTSC IX	0	0.0
lost to additional IX by ATV	113354	1195.2
lost to ATV IX only	113354	1195.2
lost to all IX	113354	1195.2

Potential Interfering Stations Included in above Scenario 3

8A LA NEW ORLEANS	DTVPLN	DTVP0131	PLN
9A AL MOBILE	DTVPLN	DTVP0177	PLN
10A LA LAFAYETTE	DTVPLN	DTVP0260	PLN

Result key: 35
Scenario 4 Affected station 11
Before Analysis

Results for: 9A LA BATON ROUGE USERRECORD01 APP
HAAT 511.0 m, ATV ERP 5.6 kW

	POPULATION	AREA (sq km)
within Noise Limited Contour	1679761	33097.5
not affected by terrain losses	1679224	32861.5
lost to NTSC IX	0	0.0
lost to additional IX by ATV	118429	1299.2
lost to ATV IX only	118429	1299.2
lost to all IX	118429	1299.2

Potential Interfering Stations Included in above Scenario 4

8A LA NEW ORLEANS	DTVPLN	DTVP0131	PLN
9A AL MOBILE	DTVPLN	DTVP0177	PLN
10A LA LAFAYETTE	BPCDDT	20080313AAQ	CP

Result key: 36
Scenario 5 Affected station 11
Before Analysis

Results for: 9A LA BATON ROUGE USERRECORD01 APP
HAAT 511.0 m, ATV ERP 5.6 kW

	POPULATION	AREA (sq km)
within Noise Limited Contour	1679761	33097.5
not affected by terrain losses	1679224	32861.5
lost to NTSC IX	0	0.0
lost to additional IX by ATV	113354	1194.2
lost to ATV IX only	113354	1194.2
lost to all IX	113354	1194.2

Potential Interfering Stations Included in above Scenario 5

8A LA NEW ORLEANS	BPCDDT	20080312ACS	CP
9A AL MOBILE	BLCDDT	20050316ADI	LIC
10A LA LAFAYETTE	DTVPLN	DTVP0260	PLN

Result key: 37
Scenario 6 Affected station 11
Before Analysis

Results for: 9A LA BATON ROUGE USERRECORD01 APP
HAAT 511.0 m, ATV ERP 5.6 kW

	POPULATION	AREA (sq km)
within Noise Limited Contour	1679761	33097.5
not affected by terrain losses	1679224	32861.5
lost to NTSC IX	0	0.0
lost to additional IX by ATV	118429	1298.2
lost to ATV IX only	118429	1298.2
lost to all IX	118429	1298.2

Potential Interfering Stations Included in above Scenario 6

8A LA NEW ORLEANS	BPCDT	20080312ACS	CP
9A AL MOBILE	BLCDT	20050316ADI	LIC
10A LA LAFAYETTE	BPCDT	20080313AAQ	CP

Result key: 38
Scenario 7 Affected station 11
Before Analysis

Results for: 9A LA BATON ROUGE USERRECORD01 APP
HAAT 511.0 m, ATV ERP 5.6 kW

	POPULATION	AREA (sq km)
within Noise Limited Contour	1679761	33097.5
not affected by terrain losses	1679224	32861.5
lost to NTSC IX	0	0.0
lost to additional IX by ATV	113354	1194.2
lost to ATV IX only	113354	1194.2
lost to all IX	113354	1194.2

Potential Interfering Stations Included in above Scenario 7

8A LA NEW ORLEANS	BPCDT	20080312ACS	CP
9A AL MOBILE	DTVPLN	DTVP0177	PLN
10A LA LAFAYETTE	DTVPLN	DTVP0260	PLN

Result key: 39
Scenario 8 Affected station 11
Before Analysis

Results for: 9A LA BATON ROUGE USERRECORD01 APP
HAAT 511.0 m, ATV ERP 5.6 kW

	POPULATION	AREA (sq km)
within Noise Limited Contour	1679761	33097.5
not affected by terrain losses	1679224	32861.5
lost to NTSC IX	0	0.0
lost to additional IX by ATV	118429	1298.2
lost to ATV IX only	118429	1298.2
lost to all IX	118429	1298.2

Potential Interfering Stations Included in above Scenario 8

8A LA NEW ORLEANS	BPCDT	20080312ACS	CP
9A AL MOBILE	DTVPLN	DTVP0177	PLN
10A LA LAFAYETTE	BPCDT	20080313AAQ	CP

FINISHED FINISHED FINISHED FINISHED FINISHED FINISHED