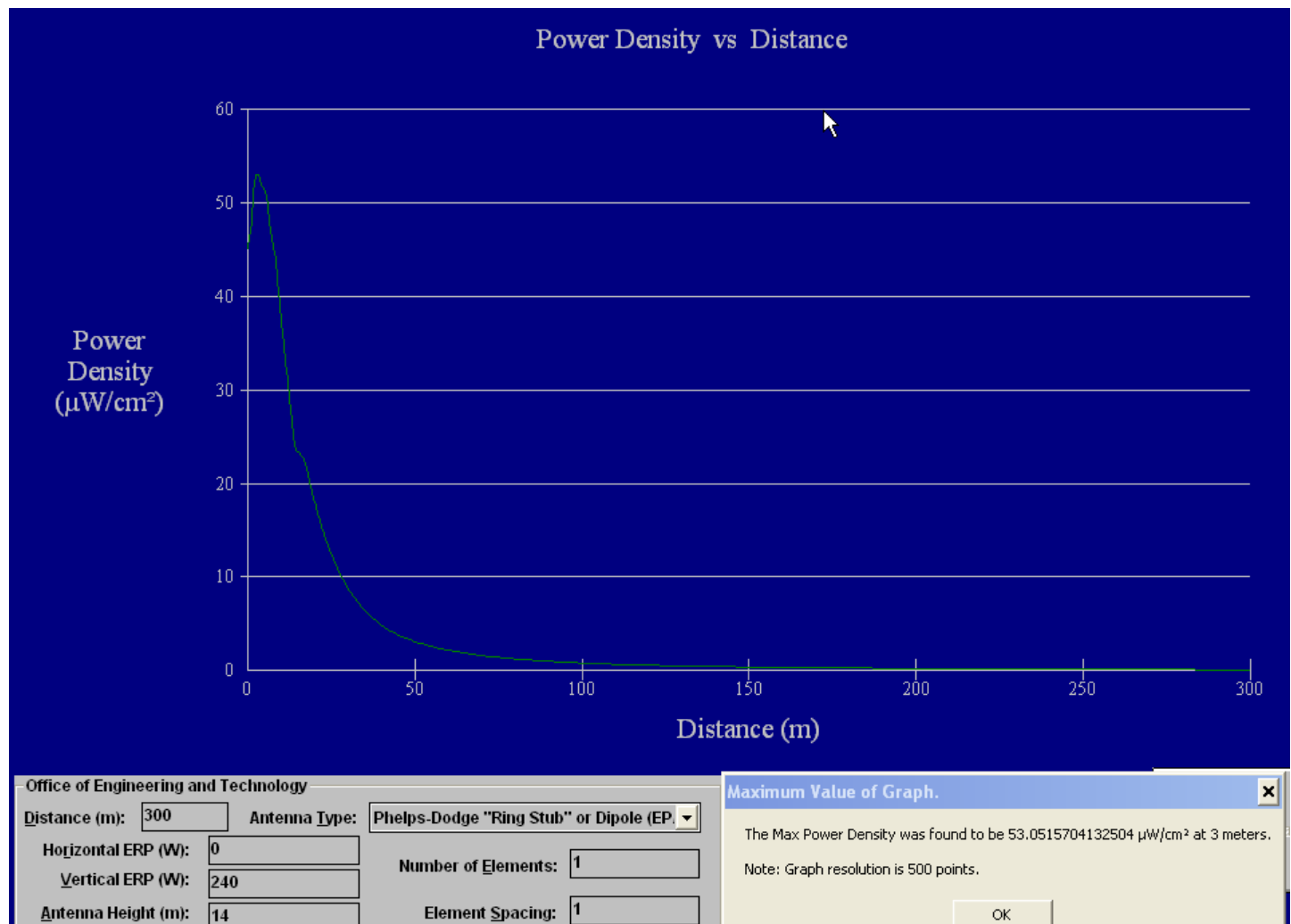


**EXHIBIT 16****ENVIRONMENTAL IMPACT**

The Applicant proposes to mount its antenna with the center of radiation at 13 meters above ground level. Figure 1. below, shows the maximum power density produced by the proposed facility at a point 3.1 meters above ground is 53.015  $\mu\text{W}/\text{cm}^2$ , 26.5 percent of the 200  $\mu\text{W}/\text{cm}^2$  ANSI limit for uncontrolled general population exposure. Therefore, this proposal complies with ANSI standards.



Please Note: The Phelps Dodge "Ring Stub" Antenna Model was Employed to return a worst case result.

Actual Antenna to be used for W257CP is a Scala FMV-1, with Vertical Polarization.