

EXHIBIT 12

Waiver Request of Section 74.1204
W225AV Midland TX 250 Watts ERP
Minor Modification – Site Change
March 2007
Calvary Chapel of Twin Falls, Inc.

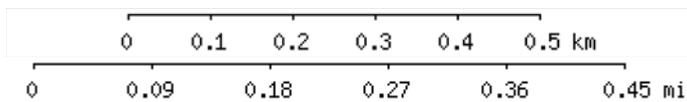
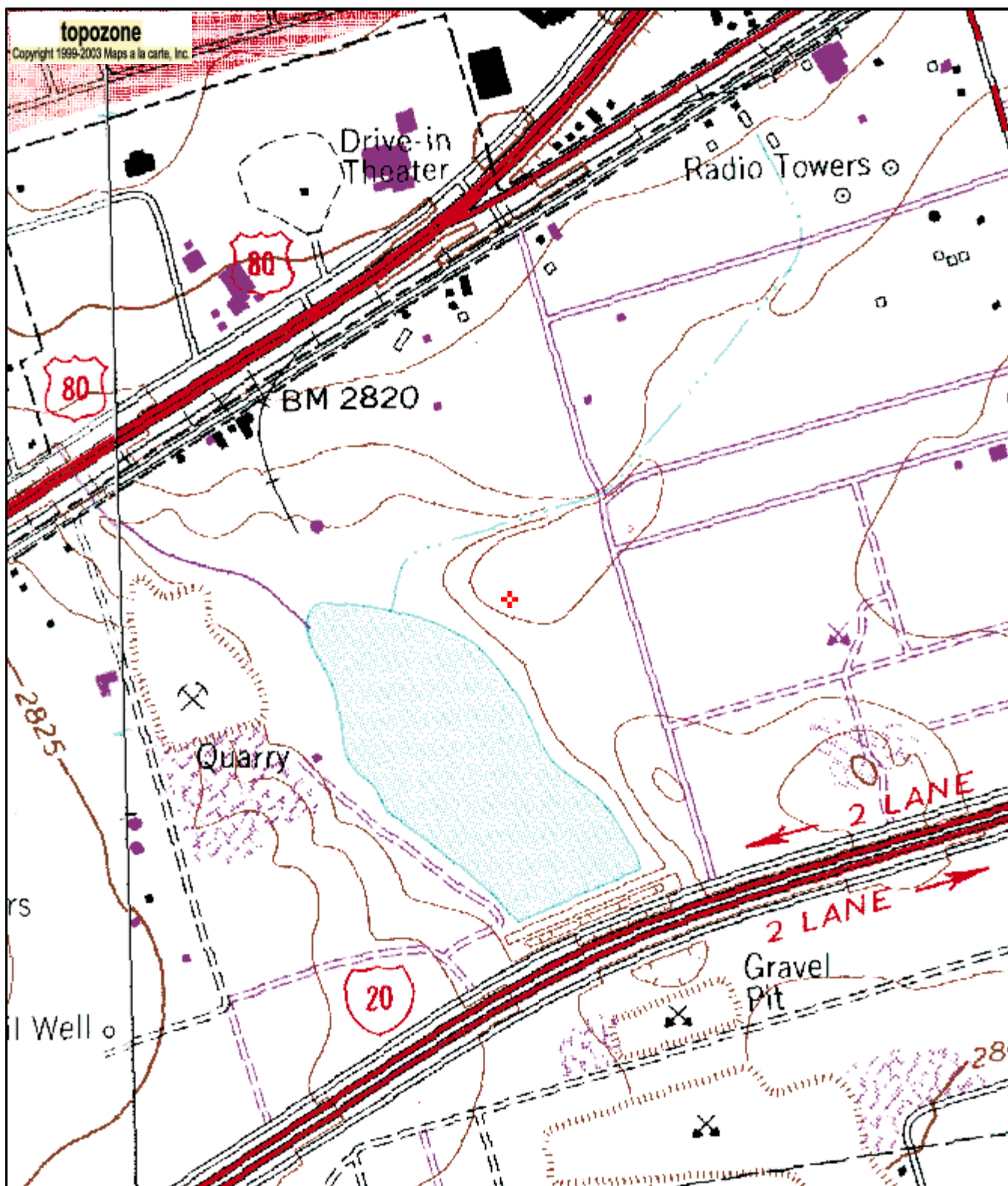
The proposed site is contained entirely inside the service contour of third -adjacent FM Station KNFM Midland, TX and second-adjacent FM Station KZBT Midland, TX

KNFM

The proposed site is contained entirely inside the service contour of third-adjacent FM Station KNFM, Channel 222 C, 100kW, Midland, TX. The level of least arriving protected F(50,50) signal at the proposed transmitter site is 87.2-dBu and using the Undesired-to-Desired method for calculating proposed interference, the interfering contour with respect to KNFM 127.2-dBu (free-space contour method employed). The interfering signal would, in the worst case at the maximum radial, extend 49 meters from the center of radiation, which is proposed at 83 meters AGL. This interference contour does not touch the ground. This tower is located in a sparsely populated area and attached is the USGS Southeast Midland (TX) Quadrangle. Because there are no residences, businesses or major roads that are located close enough to puncture this interference contour, Calvary Chapel of Twin Falls, Inc. respectfully requests a waiver of the FM translator contour overlap regulations with respect to third-adjacent FM Station KNFM.

KZBT

The proposed site is contained entirely inside the service contour of second-adjacent FM Station KZBT, Channel 227C1, 100kW, Midland, TX. The level of least arriving protected F(50,50) signal at the proposed transmitter site is in excess of 103-dBu. Using the Undesired-to-Desired method for calculating proposed interference, the interfering contour with respect to KZBT is in excess of 143-dBu (free-space contour method employed). The interfering signal would, in the worst case at the maximum radial, extend less than 8 meters from the center of radiation, which is proposed at 83 meters AGL. This interference contour does not touch the ground. This tower is located in a sparsely populated area and attached is the USGS Southeast Midland (TX) Quadrangle. Because there are no residences, businesses or major roads that are located close enough to puncture this interference contour, Calvary Chapel of Twin Falls, Inc. respectfully requests a waiver of the FM translator contour overlap regulations with respect to second-adjacent FM Station KZBT.



31° 58' 01"N, 102° 07' 06"W (NAD27)
USGS Southeast Midland (TX) Quadrangle
 Projection is UTM Zone 13 NAD83 Datum

*M
 M=7.845
 G=1.527

Contour.out

TERRAIN AND CONTOUR DATA
CALVARY CHAPEL OF TWIN FALLS, INC.
K225AV MIDLAND, TX MINOR MODIFICATION
MARCH 2007

N. Lat. = 31 58 01 W. Lng. = 102 07 06
HAAT and Distance to Contour - FCC Method - 03 Arc Sec.

Azi .	AV EL	HAAT	ERP kW	dBk	Fi el d	60-F5
000	854.9	86.1	0.2500	-6.02	1.000	11.97
030	850.9	90.1	0.2500	-6.02	1.000	12.23
060	842.5	98.5	0.2500	-6.02	1.000	12.77
090	838.4	102.6	0.2500	-6.02	1.000	13.02
120	834.8	106.2	0.2500	-6.02	1.000	13.25
150	846.1	94.9	0.2500	-6.02	1.000	12.54
180	854.5	86.5	0.2500	-6.02	1.000	12.00
210	857.2	83.8	0.2500	-6.02	1.000	11.82
240	869.2	71.8	0.2500	-6.02	1.000	11.02
270	880.6	60.4	0.2500	-6.02	1.000	10.21
300	871.1	69.9	0.2500	-6.02	1.000	10.89
330	862.8	78.2	0.2500	-6.02	1.000	11.45

Ave EI = 855.24 M HAAT= 85.76 M AMSL= 941 M