

Non-Interference Compliance

Regarding Facility id 150595

Channel 285

Description of Exhibit 12 Contents

This exhibit demonstrates that the proposed facility complies with contour overlap and interference protection provisions in all of the applicable rule sections and that this application for a construction permit is in full compliance with 47 C.F.R. § 74.1204.

Let it be noted that should any actual real world interference occur, the applicant acknowledges that it will promptly suspend operation of this translator in accordance with 47 C.F.R. § 74.1203.

Page 2 of this exhibit is an explanation of the method used to demonstrate compliance with contour overlap and interference provisions based on 47 C.F.R. § 74.1204(d), which states:

[A]n application otherwise precluded by this section will be accepted if it can be demonstrated that no actual interference will occur due to intervening terrain, lack of population or such other factors as may be applicable.

Page 3 of this exhibit contains the tabulated data from the interference analysis, which shows all stations whose protected contours come within 50 km of the 34 dBμ F(50,10) contour of the proposed translator. These tabulated values were calculated using data from the FCC's CDBS files and 30 arc second terrain data. The column labeled "Adj" shows the number of channels difference between the entry and the proposed translator. The column labeled "Dist" shows the distance in km. The column labeled "Overlap" shows the area of contour overlap in square kilometers.

Page 4 of this exhibit is a portion of a USGS 1:24,000 scale 7.5 minute quadrangle at full scale with the calculated area of interference overlaid. The sheet includes the quadrangle name and measurement scale at the bottom-left corner (note: "Mt" refers to meters). The area of interference was calculated using the free space equation and 120 radials.

Page 5 of this exhibit is a high resolution aerial photo of the vicinity surrounding the proposed translator's tower site provided by the U.S. Geological Survey's National Aerial Photography Program. It has been included to provide clarification of the nature of the buildings in the vicinity.

Note: The quadrangle and aerial photo indicate the presence of a county road and no buildings in the area of interference. It is apparent that this is not a major road, e.g. interstate highway, as described in the Living Way decision and therefore "lack of population" is demonstrated.

Compliance with 47 C.F.R. § 74.1204(d)

All authorized second and third adjacent stations with which the proposed translator has contour overlap are tabulated below. Column four show the station's signal level at the proposed translator's tower site, and column five gives the minimum value within the entire standard interfering contour of the proposed translator (100 dBμ for most classes, 94 for class B, 97 for class B1). The minimum second or third adjacent F(50,50) contour within the proposed translator's standard interfering contour was used to calculate the proposed translator's actual "worst-case" interfering contour.

Application_id	File Number	Callsign	Contour at Tower	Min. Contour
296608	BLH6529	WKOA	66.3	66.2
680072	BMLH20030828AYT	WJJK	55.1	55.1
Minimum F(50,50) Contour of Adjacent Station within Proposed Translator's Standard Interfering Contour				55.1

FCC 02-244 at Section II.A.5 states that "when demonstrating that 'no actual interference will occur due to . . . other factors,' pursuant to Section 74.1204(d), an applicant may use the undesired-to-desired signal ratio method." The undesired-to-desired ratio for second and third adjacent stations required by § 74.1204(a) is 40 dB. Since the minimum protected contour strength within the proposed translator's standard interference contour is **55.1 dBμ**, this makes the proposed translator's worst-case interfering contour **95.1 dBμ**. By the free-space equation, this contour is calculated to extend a maximum of **230.7 m** from the transmit antenna.

The interfering contour of the proposed translator was calculated for 120 radials and plotted on the pertinent portion of a USGS quadrangle (page 4 of this exhibit). As demonstrated on the quadrangle, there are no populated structures or highways within the area of interference (Note: FCC 02-244 at Section II.A.6 states that USGS quadrangles "have been recognized as acceptable to demonstrate lack of population"). Hence, in accordance with 47 C.F.R. § 74.1204(d) and the clarification provided by the FCC in the decision *Re: Living Way Ministries* (FCC 02-244), a lack of population has been demonstrated within the area of interference and this application is therefore in full compliance with 47 C.F.R. § 74.1204.

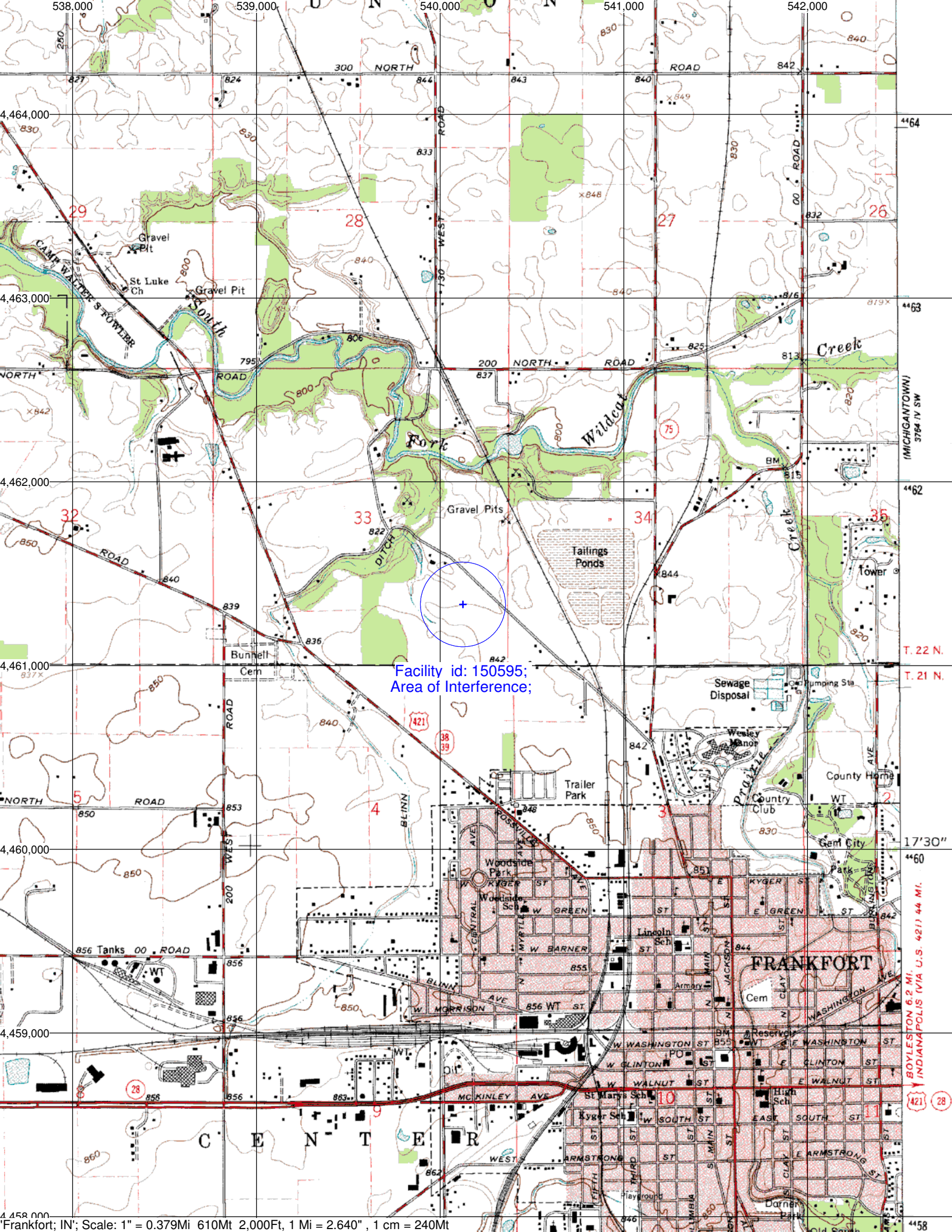
Note: The quadrangle and aerial photo indicate the presence of a county road but no buildings in the area of interference. It is apparent that this is not a major road, e.g. interstate highway, as described in the Living Way decision and therefore "lack of population" is demonstrated.

Antenna Manufacturer: SCA
Antenna Model: GP-FM
CORAGL: 76 m
Maximum ERP: 0.0035 kW
Interfering Contour: 95.1 dBμ
Max Int. Contour Distance: 230.7 m

Adjacent Channel Study **For Station W285DQ, Facility_id: 150595**

Co-channel through third adjacent:

Application_id	Facility_id	Prefix	ARN	Call	Licensee	Class	City	State	Status	ERP	RCAMSL	Channel	Adj	Dist	Overlap
296608	71064	BLH	6529	WKOA		B	LAFAYETTE	IN	LIC	50	291	287	2	29.4	0.0831
680072	28609	BMLH	20030828AYT	WJJJ	INDY LICO, INC.	B	NOBLESVILLE	IN	LIC	50	390	283	2	59.6	0.0831
632222	140805	BNPFT	20030312AKM	NEW	CSN INTERNATIONAL	D	DELPHI	IN	APP	0.055	246	282	3	35	0
632378	140899	BNPFT	20030314BKL	NEW	FRIENDS OF CHRISTIAN RADIO, INC.	D	WEST LAFAYETTE	IN	APP	0.019	271	282	3	44.3	0
649053	155799	BNPFT	20030317GWT	NEW	KASPAR BROADCASTING CO, INC	D	ZIONSVILLE	IN	APP	0.25	301	285	0	44.6	0
643550	150591	BNPFT	20030317IDB	NEW	RADIO ASSIST MINISTRY, INC.	D	BROWNSBURG	IN	APP	0.027	350.1	285	0	49.5	0
634614	142650	BNPFT	20030313AEU	NEW	HOOSIER BROADCASTING CORPORATION	D	CARMEL	IN	APP	0.08	284	285	0	50.1	0
648938	155700	BNPFT	20030317GRY	NEW	KASPAR BROADCASTING CO, INC	D	LOGANSPOUT	IN	APP	0.25	249	282	3	52.2	0
649046	155792	BNPFT	20030317GWL	NEW	KASPAR BROADCASTING CO, INC	D	NOBLESVILLE	IN	APP	0.25	259	285	0	53	0
635740	143528	BNPFT	20030314AJP	NEW	HORIZON CHRISTIAN FELLOWSHIP, INC.	D	NOBLESVILLE	IN	APP	0.038	295	286	1	55.4	0
214223	28609	BLH	19950927KC	WJJJ	INDY LICO, INC	B	INDIANAPOLIS	IN	LIC	14	396	283	2	67.8	0
609334	28609	BMLH	20020814AAU	WJJJ	INDY LICO, INC.	B	INDIANAPOLIS	IN	LIC	14	396	283	2	67.8	0
1052360	1723	BMLH	20050322ADL	WERK	INDIANA SABRECOM, INC.	A	MUNCIE	IN	LIC	6	392	285	0	94.6	0



Facility id: 150595;
Area of Interference;

-88.5279

40.3035

40.3035

