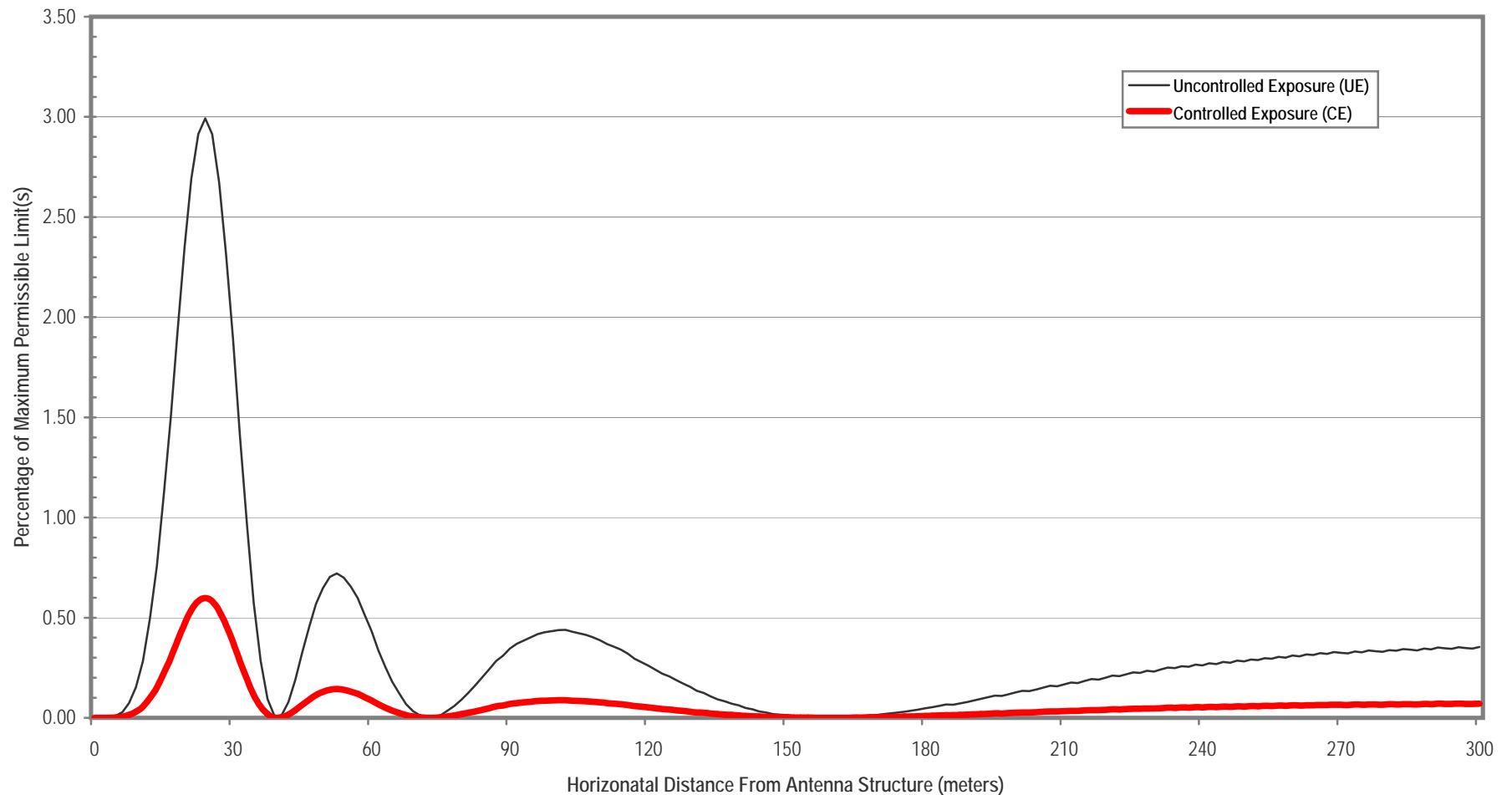


**PREDICTED GROUND LEVEL EXPOSURE**  
(Pursuant to FCC OET Bulletin 65, ed. 97-01)



STATION INFORMATION		ANTENNA TYPE		ANALYSIS PARAMETERS		MAXIMUM PERMISSIBLE LIMITS	
Call Sign:	KOBI	Make & Model:	CET JAT4/5D	Antenna RCAGL(m):	39.0	General UE ( $\mu\text{W}/\text{cm}^2$ ):	200.0
Location:	Medford, OR	Elevation pattern / equivalent:	DIE_TF-4MT_5	Exposure height AGL(m):	2	Occupational CE ( $\mu\text{W}/\text{cm}^2$ ):	1,000.0
Service:	DT	SITE DESCRIPTION		>> Critical slope distance(m):	44.1	GROUND LEVEL EXPOSURE	
Frequency(MHz):	76			Ground reflection factor:	2.56		
(P)eak or (A)vg power:	A	Accessible to public:	No	Isotropic factor:	1.64	Peak power density ( $\mu\text{W}/\text{cm}^2$ ):	6.0
ERP in Watts (H+V):	5400	>> Plot uncontrolled exposure:	Yes	>> Resultant multiplier	33.41	>> Horizontal distance(m):	24.0
Aural ERP(%):		Radius of controlled Area (m):	0	Maximum study distance(m):	300	Percentage of UE limit:	3.0%
>> Total average power:	5400	Elevation change per meter:	0	Pertinent direction of study:	All	Percentage of CE limit:	0.6%