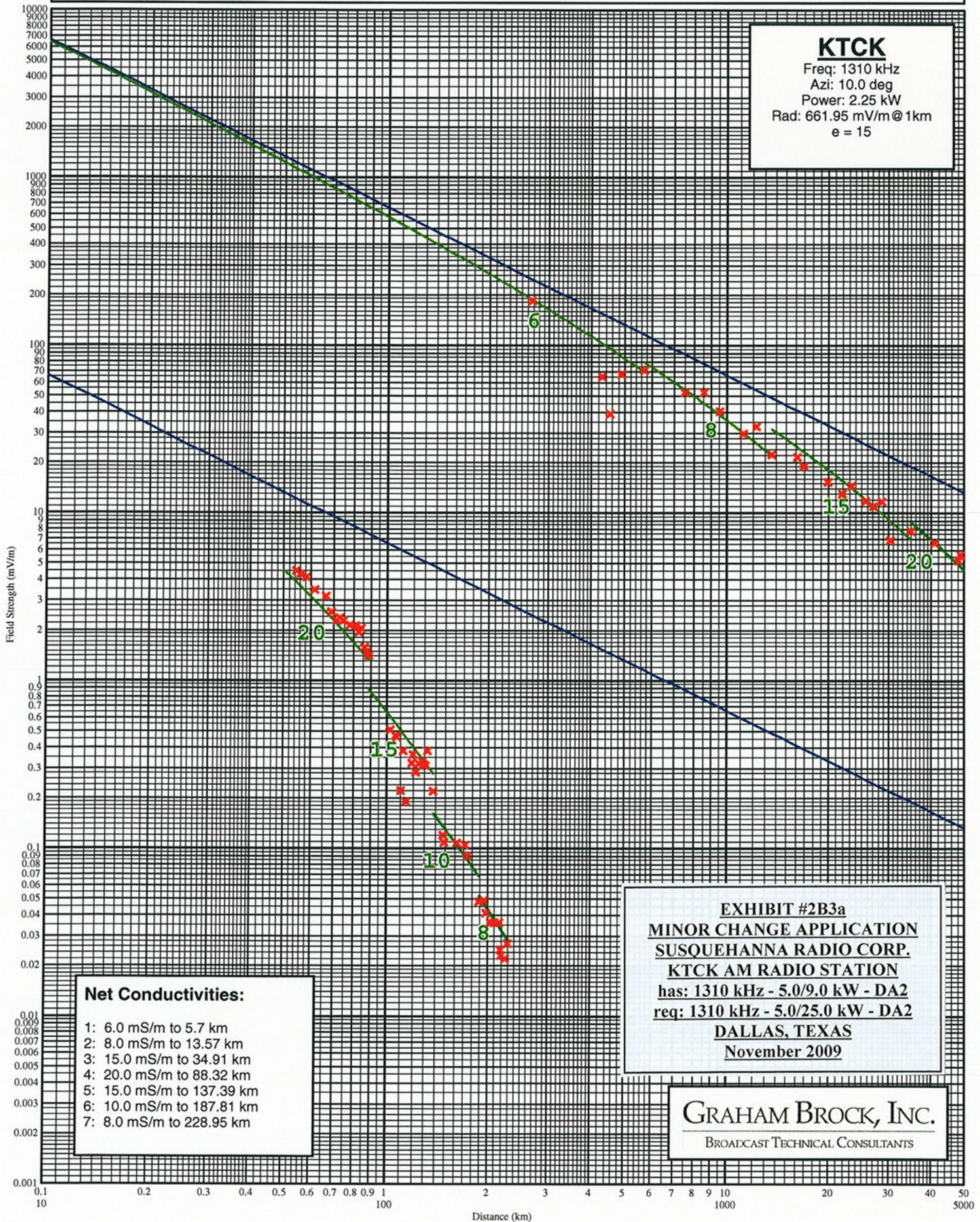


KTCK AM Measured Field Strength

Shown With Matching Conductivity Curves



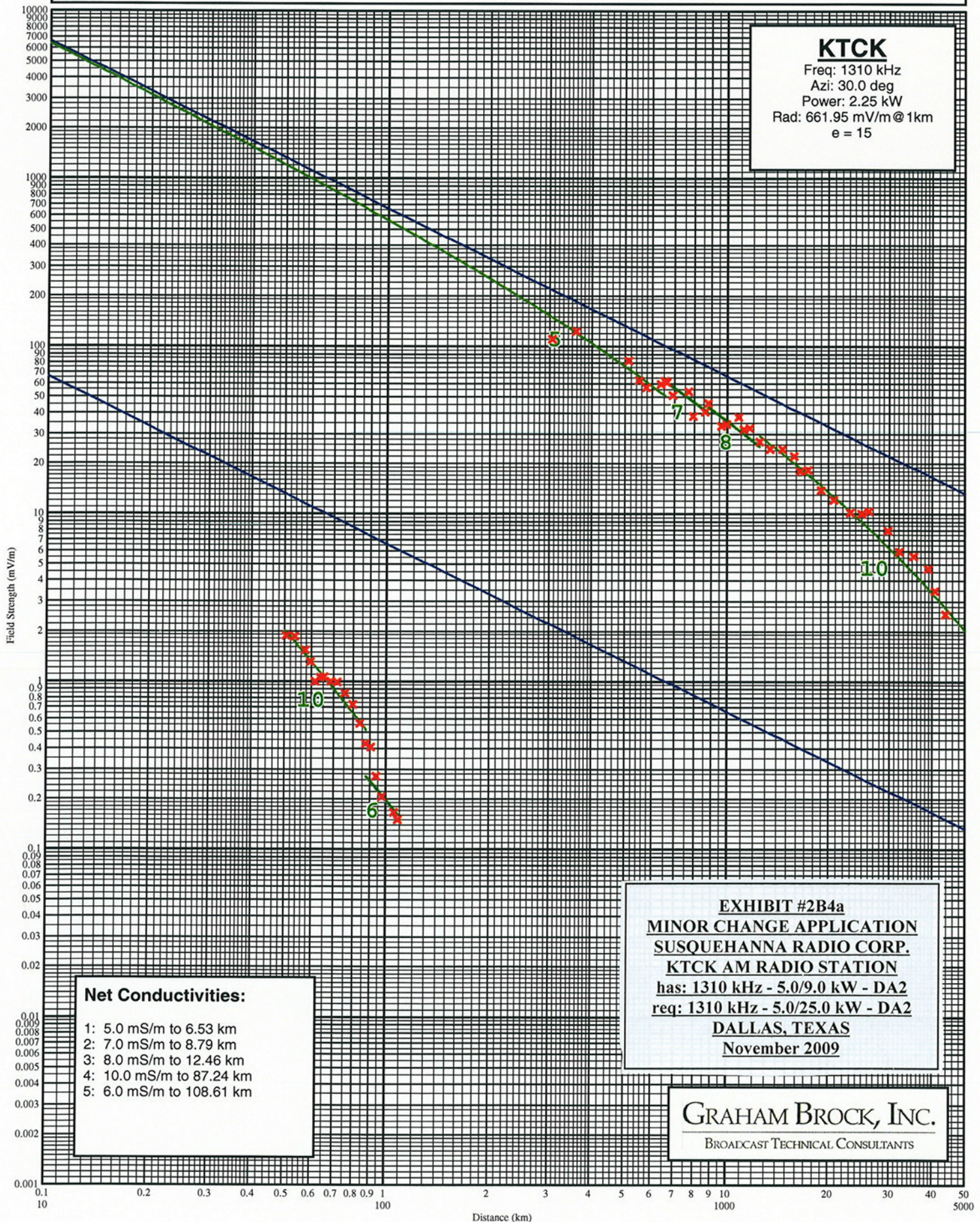
Measurements for 10.0 degrees.

Point Number	Distance (km)	(mi)	Field (mV/m)	Notes	Date	Time
-----	----	----	-----	-----	-----	----
1	2.67	1.66	184.000		6/16/2009	1318
2	4.30	2.67	65.000		6/16/2009	1336
3	4.52	2.81	39.000		6/16/2009	1312
4	4.89	3.04	67.400		6/16/2009	1306
5	5.70	3.54	71.000		6/16/2009	1304
6	7.50	4.66	52.500		6/16/2009	1258
7	8.56	5.32	52.400		6/16/2009	1252
8	9.54	5.93	40.200		6/16/2009	1248
9	11.18	6.95	29.800		6/16/2009	1019
10	12.25	7.61	32.700		6/16/2009	1238
11	13.57	8.43	22.200		6/16/2009	1234
12	16.17	10.05	21.600		6/16/2009	1223
13	16.91	10.51	18.900		6/16/2009	1220
14	19.84	12.33	15.300		6/16/2009	1210
15	21.97	13.65	13.000		6/16/2009	1201
16	23.34	14.50	14.500		6/16/2009	1156
17	25.69	15.96	11.750		6/16/2009	1146
18	27.07	16.82	10.950		6/16/2009	1118
19	28.68	17.82	11.700		6/16/2009	1114
20	30.43	18.91	6.900		6/16/2009	1107
21	34.91	21.69	7.820		6/16/2009	1050
22	40.88	25.40	6.620		6/16/2009	1032
23	48.25	29.98	5.190		6/15/2009	1525
24	48.81	30.33	5.620		6/15/2009	1517
25	54.28	33.73	4.500		6/15/2009	1505
26	55.76	34.65	4.320		6/15/2009	1500
27	58.21	36.17	4.110		6/15/2009	1456
28	61.32	38.10	3.490		6/15/2009	1449
29	66.30	41.20	3.180		6/15/2009	1440
30	68.78	42.74	2.550		6/15/2009	1434
31	71.13	44.20	2.270		6/15/2009	1429
32	72.87	45.28	2.370		6/15/2009	1414
33	74.53	46.31	2.270		6/15/2009	1407
34	77.83	48.36	2.140		6/15/2009	1358
35	80.84	50.23	2.120		6/15/2009	1349
36	82.51	51.27	1.940		6/15/2009	1342
37	84.15	52.29	2.050		6/15/2009	1337
38	85.79	53.31	1.570		6/15/2009	1331
39	87.53	54.39	1.490		6/15/2009	1326
40	88.32	54.88	1.400		6/15/2009	1323
41	102.19	63.50	0.510		6/15/2009	1220
42	105.88	65.79	0.470		6/15/2009	1211
43	107.15	66.58	0.460		6/15/2009	1207
44	109.73	68.18	0.220		6/15/2009	1200
45	112.03	69.61	0.380		6/15/2009	1155
46	113.88	70.76	0.190		6/15/2009	1135

47	118.46	73.61	0.323	6/15/2009	1124
48	119.43	74.21	0.362	6/15/2009	1110
49	121.65	75.59	0.285	6/15/2009	1105
50	124.40	77.30	0.319	6/15/2009	1058
51	127.19	79.03	0.331	6/15/2009	1041
52	128.84	80.06	0.315	6/15/2009	1031
53	130.49	81.08	0.311	6/15/2009	1025
54	132.11	82.09	0.380	6/15/2009	1017
55	137.39	85.37	0.218	6/14/2009	1527
56	146.88	91.27	0.120	6/14/2009	1512
57	148.51	92.28	0.109	6/14/2009	1505
58	161.37	100.27	0.108	6/14/2009	1452
59	171.51	106.57	0.105	6/14/2009	1440
60	173.95	108.09	0.090	6/14/2009	1431
61	187.81	116.70	0.048	6/14/2009	1412
62	195.13	121.25	0.049	6/14/2009	1359
63	197.68	122.83	0.041	6/14/2009	1347
64	204.23	126.90	0.036	6/14/2009	1336
65	209.38	130.10	0.036	6/14/2009	1314
66	215.75	134.06	0.036	6/14/2009	1209
67	217.99	135.45	0.025	6/14/2009	1126
68	219.06	136.12	0.023	6/14/2009	1121
69	225.61	140.19	0.022	6/14/2009	1110
70	228.95	142.26	0.027	6/14/2009	1101

KTCK AM Measured Field Strength

Shown With Matching Conductivity Curves



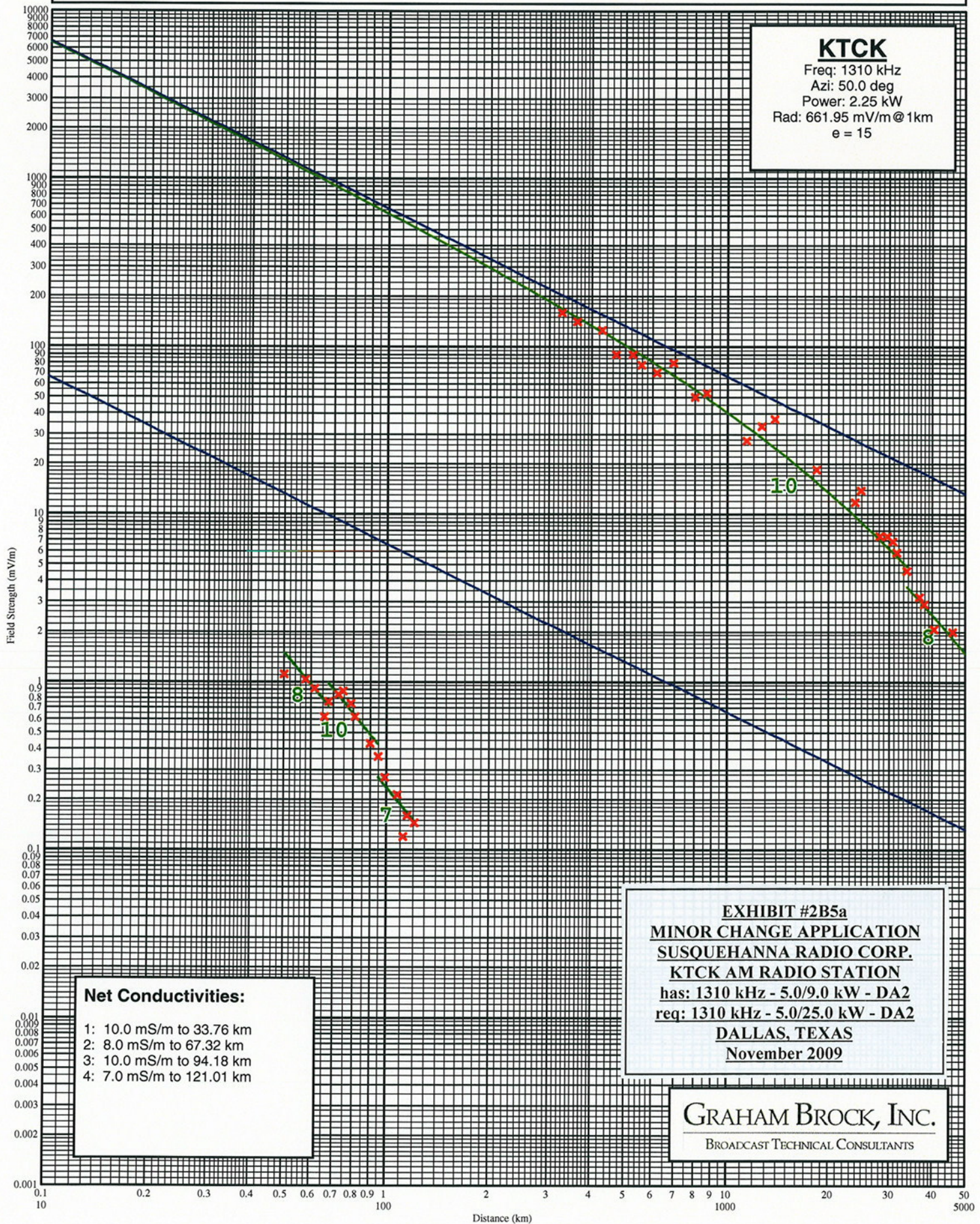
Measurements for 30.0 degrees.

Point Number	Distance (km) (mi)		Field (mV/m)	Notes	Date	Time
-----	-----	-----	-----	-----	-----	-----
1	3.06	1.90	110.000		6/16/2009	1328
2	3.59	2.23	123.000		6/16/2009	1334
3	5.12	3.18	82.000		6/16/2009	1349
4	5.49	3.41	62.500		6/16/2009	1352
5	5.78	3.59	56.500		6/16/2009	1354
6	6.36	3.95	59.500		6/16/2009	1357
7	6.53	4.06	62.100		6/16/2009	1358
8	6.63	4.12	61.000		6/16/2009	1359
9	6.89	4.28	51.000		6/16/2009	1401
10	7.69	4.78	53.800		6/16/2009	1405
11	7.92	4.92	38.200		6/16/2009	1406
12	8.59	5.34	40.800		6/16/2009	1409
13	8.79	5.46	45.800		6/16/2009	1410
14	9.61	5.97	33.300		6/16/2009	1413
15	9.98	6.20	34.400		6/16/2009	1415
16	10.80	6.71	38.000		6/16/2009	1418
17	11.22	6.97	31.900		6/16/2009	1421
18	11.64	7.23	32.600		6/16/2009	1423
19	12.46	7.74	26.900		6/16/2009	1427
20	13.39	8.32	24.300		6/16/2009	1437
21	14.58	9.06	24.400		6/16/2009	1440
22	15.79	9.81	22.100		6/16/2009	1446
23	16.48	10.24	17.900		6/16/2009	1449
24	17.36	10.79	18.300		6/16/2009	1452
25	18.99	11.80	13.900		6/16/2009	1457
26	20.65	12.83	12.100		6/17/2009	1005
27	23.13	14.37	10.200		6/17/2009	1017
28	24.91	15.48	10.000		6/17/2009	1022
29	26.28	16.33	10.400		6/17/2009	1026
30	29.72	18.47	7.950		6/17/2009	1033
31	32.15	19.98	5.950		6/17/2009	1042
32	35.18	21.86	5.590		6/17/2009	1052
33	38.90	24.17	4.700		6/17/2009	1102
34	40.75	25.32	3.490		6/17/2009	1110
35	43.68	27.14	2.520		6/17/2009	1116
36	50.40	31.32	1.870		6/17/2009	1127
37	53.38	33.17	1.850		6/17/2009	1136
38	57.42	35.68	1.530		6/17/2009	1215
39	59.37	36.89	1.300		6/17/2009	1206
40	61.32	38.10	0.995		6/17/2009	1223
41	63.52	39.47	1.050		6/17/2009	1243
42	65.24	40.54	1.060		6/17/2009	1250
43	68.24	42.40	0.995		6/17/2009	1257
44	71.65	44.52	0.990		6/17/2009	1305
45	75.45	46.88	0.850		6/17/2009	1316
46	79.55	49.43	0.730		6/17/2009	1328

47	83.54	51.91	0.560	6/17/2009	1336
48	87.24	54.21	0.425	6/17/2009	1344
49	90.12	56.00	0.405	6/17/2009	1359
50	93.34	58.00	0.271	6/17/2009	1412
51	97.56	60.62	0.205	6/17/2009	1424
52	105.61	65.62	0.165	6/17/2009	1446
53	108.61	67.49	0.150	6/17/2009	1453

KTCK AM Measured Field Strength

Shown With Matching Conductivity Curves



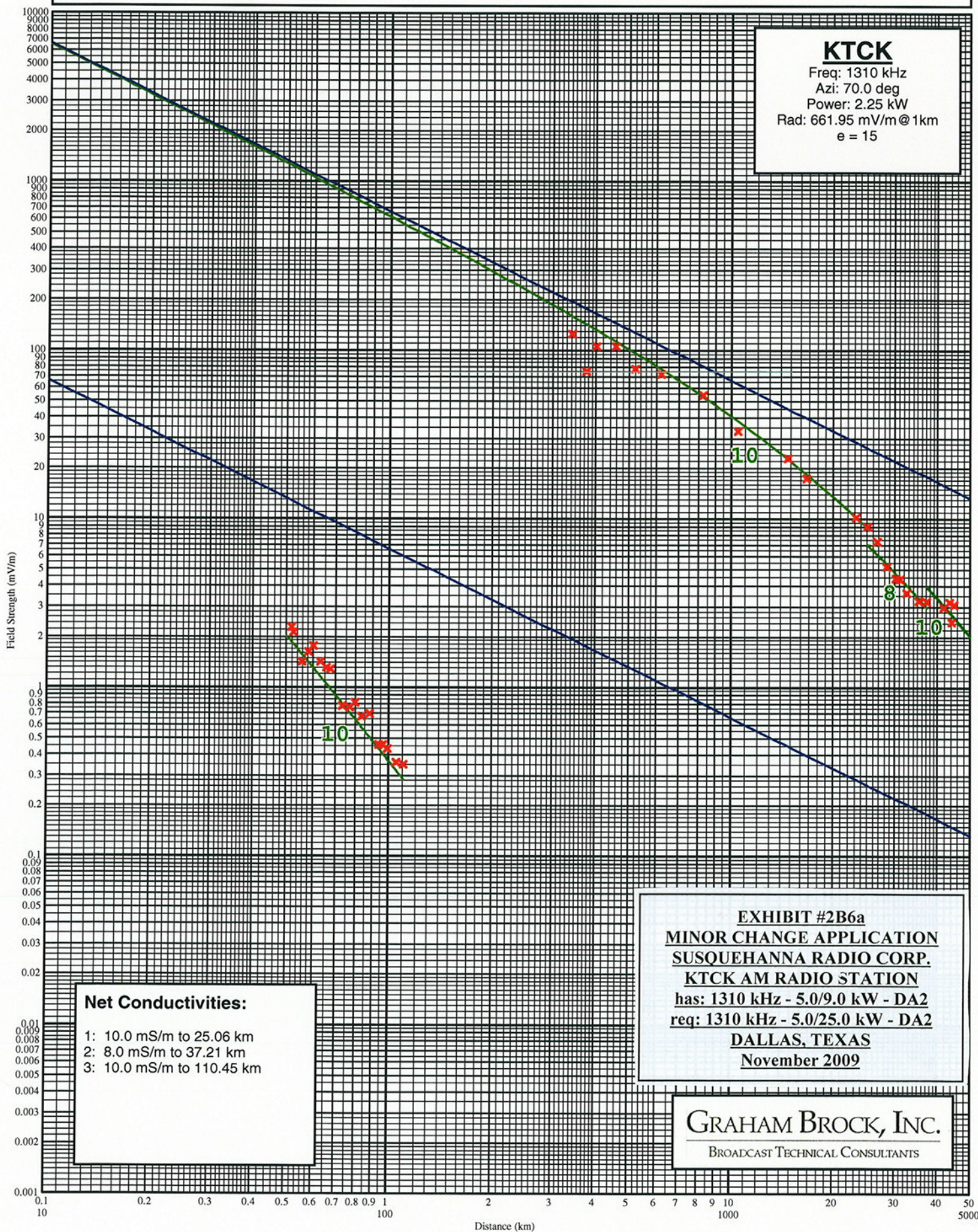
Measurements for 50.0 degrees.

Point Number	Distance (km)	(mi)	Field (mV/m)	Notes	Date	Time
-----	----	----	-----	-----	-----	----
1	3.27	2.03	160.000		8/17/2009	1202
2	3.62	2.25	140.000		8/17/2009	1207
3	4.26	2.65	125.000		8/17/2009	1214
4	4.70	2.92	90.000		8/17/2009	1219
5	5.25	3.26	90.000		8/17/2009	1223
6	5.57	3.46	78.000		8/17/2009	1226
7	6.16	3.83	70.000		8/17/2009	1235
8	6.89	4.28	80.000		8/17/2009	1303
9	7.98	4.96	50.000		8/17/2009	1310
10	8.69	5.40	53.000		8/17/2009	1318
11	11.39	7.08	27.500		8/17/2009	1341
12	12.63	7.85	33.500		8/17/2009	1400
13	13.81	8.58	37.000		8/17/2009	1348
14	18.43	11.45	18.500		8/17/2009	1423
15	23.91	14.86	11.800		6/18/2009	1518
16	24.85	15.44	13.800		6/18/2009	1515
17	28.23	17.54	7.400		6/18/2009	1504
18	29.58	18.38	7.400		6/18/2009	1459
19	30.64	19.04	6.850		6/18/2009	1456
20	31.56	19.61	5.910		6/18/2009	1451
21	33.76	20.98	4.600		6/18/2009	1445
22	36.77	22.85	3.210		6/18/2009	1435
23	37.82	23.50	2.910		6/18/2009	1424
24	40.46	25.14	2.070		6/18/2009	1412
25	45.98	28.57	2.000		6/18/2009	1327
26	50.05	31.10	1.110		6/18/2009	1317
27	57.61	35.80	1.030		6/18/2009	1304
28	61.38	38.14	0.910		6/18/2009	1253
29	65.55	40.73	0.620		6/18/2009	1243
30	67.32	41.83	0.760		6/18/2009	1234
31	72.07	44.78	0.840		6/18/2009	1221
32	74.45	46.26	0.880		6/18/2009	1215
33	78.39	48.71	0.740		6/18/2009	1207
34	80.76	50.18	0.622		6/18/2009	1201
35	89.53	55.63	0.430		6/18/2009	1141
36	94.18	58.52	0.358		6/18/2009	1134
37	98.65	61.30	0.268		6/18/2009	1116
38	107.50	66.80	0.212		6/18/2009	1052
39	111.69	69.40	0.120		6/18/2009	1039
40	115.10	71.52	0.160		6/18/2009	1029
41	121.01	75.19	0.145		8/18/2009	1016

EXHIBIT #2B5b
MINOR CHANGE APPLICATION
SUSQUEHANNA RADIO CORP.
KTCK AM RADIO STATION
has: 1310 kHz - 5.0/9.0 kW - DA2
req: 1310 kHz - 5.0/25.0 kW - DA2
DALLAS, TEXAS
November 2009

KTCK AM Measured Field Strength

Shown With Matching Conductivity Curves



Measurements for 70.0 degrees.

Point Number	Distance (km) (mi)		Field (mV/m)	Notes	Date	Time
-----	-----	-----	-----	-----	-----	-----
1	3.41	2.12	125.000		8/12/2009	1637
2	3.75	2.33	75.000		8/12/2009	1632
3	4.01	2.49	105.000		8/12/2009	1628
4	4.57	2.84	105.000		8/12/2009	1619
5	5.20	3.23	78.000		8/12/2009	1609
6	6.20	3.85	72.000		8/12/2009	1605
7	8.24	5.12	54.000		8/12/2009	1546
8	10.46	6.50	33.000		8/12/2009	1535
9	14.73	9.15	23.000		8/12/2009	1500
10	16.67	10.36	17.300		8/12/2009	1445
11	23.26	14.45	10.200		6/23/2009	1522
12	25.06	15.57	9.000		6/23/2009	1513
13	26.65	16.56	7.300		6/23/2009	1507
14	28.44	17.67	5.200		6/23/2009	1502
15	30.26	18.80	4.420		6/23/2009	1456
16	31.04	19.29	4.380		6/23/2009	1452
17	32.59	20.25	3.650		6/23/2009	1443
18	35.18	21.86	3.270		6/23/2009	1437
19	37.21	23.12	3.220		6/23/2009	1433
20	41.81	25.98	2.970		6/23/2009	1418
21	43.58	27.08	3.210		6/23/2009	1413
22	44.13	27.42	2.440		6/23/2009	1409
23	44.93	27.92	3.080		6/23/2009	1405
24	51.84	32.21	2.270		6/23/2009	1259
25	52.55	32.65	2.120		6/23/2009	1254
26	55.60	34.55	1.420		6/23/2009	1239
27	58.16	36.14	1.620		6/23/2009	1219
28	60.16	37.38	1.750		6/23/2009	1215
29	63.07	39.19	1.420		6/23/2009	1207
30	65.56	40.74	1.310		6/23/2009	1201
31	67.37	41.86	1.280		6/23/2009	1157
32	73.10	45.42	0.775		6/23/2009	1141
33	76.75	47.69	0.765		6/23/2009	1131
34	79.73	49.54	0.810		6/23/2009	1123
35	83.09	51.63	0.670		6/23/2009	1113
36	87.73	54.51	0.695		6/23/2009	1059
37	93.37	58.02	0.455		6/23/2009	1043
38	95.88	59.58	0.458		6/23/2009	1037
39	98.96	61.49	0.434		6/23/2009	1031
40	104.96	65.22	0.357		6/23/2009	1020
41	110.45	68.63	0.348		6/23/2009	1016

EXHIBIT #2B6b
MINOR CHANGE APPLICATION
SUSQUEHANNA RADIO CORP.
KTCK AM RADIO STATION
has: 1310 kHz - 5.0/9.0 kW - DA2
req: 1310 kHz - 5.0/25.0 kW - DA2
DALLAS, TEXAS
November 2009