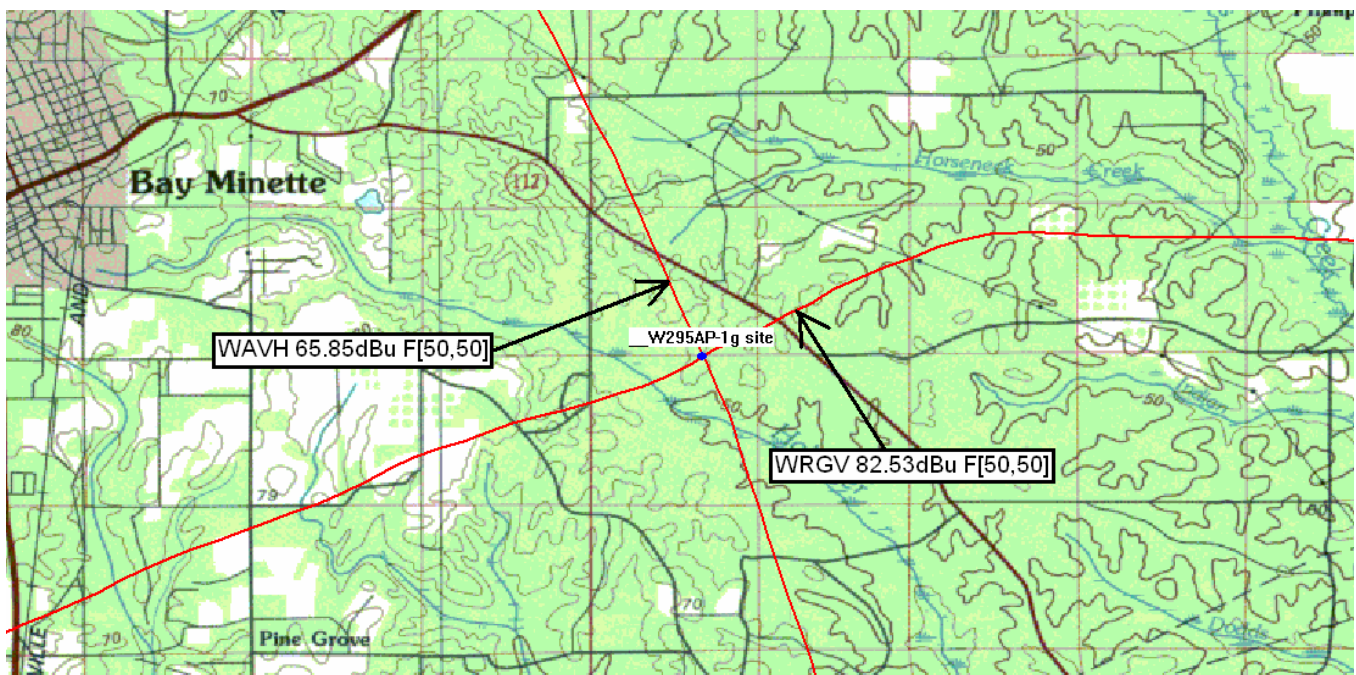


## WAVH Interference

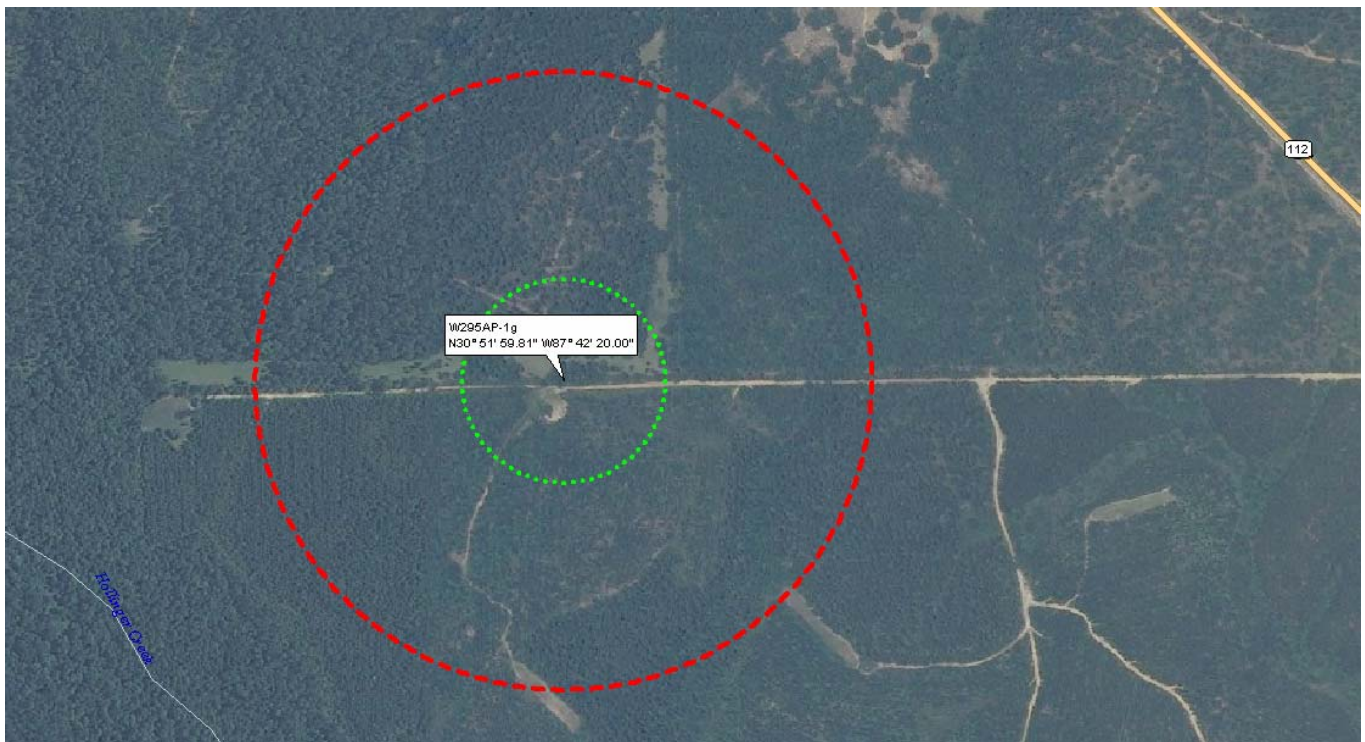
The site for the proposed facility is located within the protected contour on a channel which is second-adjacent to WAVH, the affected station. We predict the affected station protected contour at the proposed site is 66.26 dBu F[50,50] as displayed in **Figure 1**. According to established third-adjacent channel contour Undesired-to-Desired (U/D) protection ratios, the contour from the interfering station should be 40 dB higher than the protected contour. Therefore the respective interfering contour for this proposed amendment is 106.26 dBu F[50,10], which is 340 meters from the proposed radiation center. The radius of the potential interference area is displayed in **Figure 2** as the dashed red circle.



**Figure 1**

## WRGV Interference

The site for the proposed facility is located within the protected contour on a channel which is second-adjacent to WRGV, the affected station. We predict the affected station protected contour at the proposed site is 82.02 dBu F[50,50] as also displayed in **Figure 1**. According to established third-adjacent channel contour Undesired-to-Desired (U/D) protection ratios, the contour from the interfering station should be 40 dB higher than the protected contour. Therefore the respective interfering contour for this proposed amendment is 112.02 dBu F[50,10], which is 175 meters from the proposed radiation center. The radius of the potential interference area is displayed in **Figure 2** as the smaller, dotted green circle.



**Figure 2**

## **Protection to WAVH and WRGV from Interference**

The potential interference areas for WAVH and WRGV within **Figure 2** is located on private property owned by Red Mountain Lumber Company and Propst Farms, Inc., which is used for logging forest products and hunting. There are no public roads, residences or other public areas within the interference area. The only nearby public road is Alabama State Highway 112 (labeled 112 on the map). All roadways and drives within the interference area, as wide as some happen to be, are private.

## **Request for Waiver**

Since this proposal complies with 47CFR74.1204(d) based upon the fact that no actual interference will occur due to no population and no public locations within the areas of interference, we hereby request waiver of 47CFR74.1204(a)(3) for separation between this proposed facility and the affected stations.

---