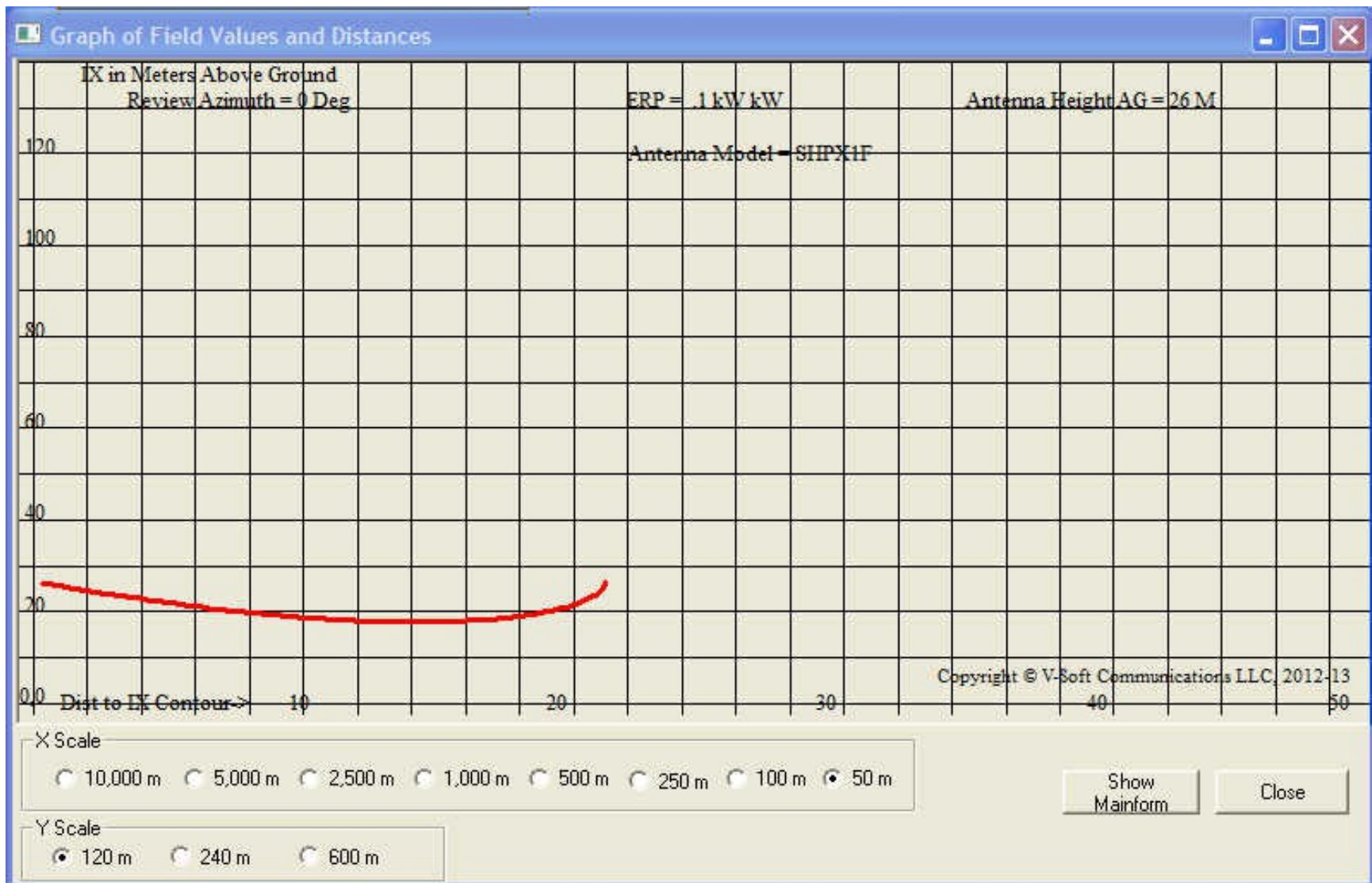


Technical Exhibit
PANAMA CITY, FL 280L

The instant application seeks a waiver of the second adjacent minimum distance separation requirement of 47 C.F.R. Section 73.807. The proposed facility will not interfere with any authorized radio service, specifically, WKNK & WBYW

Below is a graphic and tabular output showing the interfering 130 dB F(50,10) contour of the proposed facility, with respect to WKNK, which does not reach ground level. There are no tall buildings within this contour.



PANAMA CITY, FL LPFM

Translator 74.1204(d) Showing

Translator Maximum Licensed ERP = 0.1

Translator Antenna Height AG = 26 Meters

NEW Antenna Model = SHPX1F

Protected Station's Contour = 90.2327 dBu

Translator's full Interference contour 130.2327

Review Azimuth = 0 Degrees True

Horizontal Relative Field at Review Azimuth = 1.000

Horizontal Translator ERP at Review Azimuth = 0.1 kW

Distance between stations = 11.4

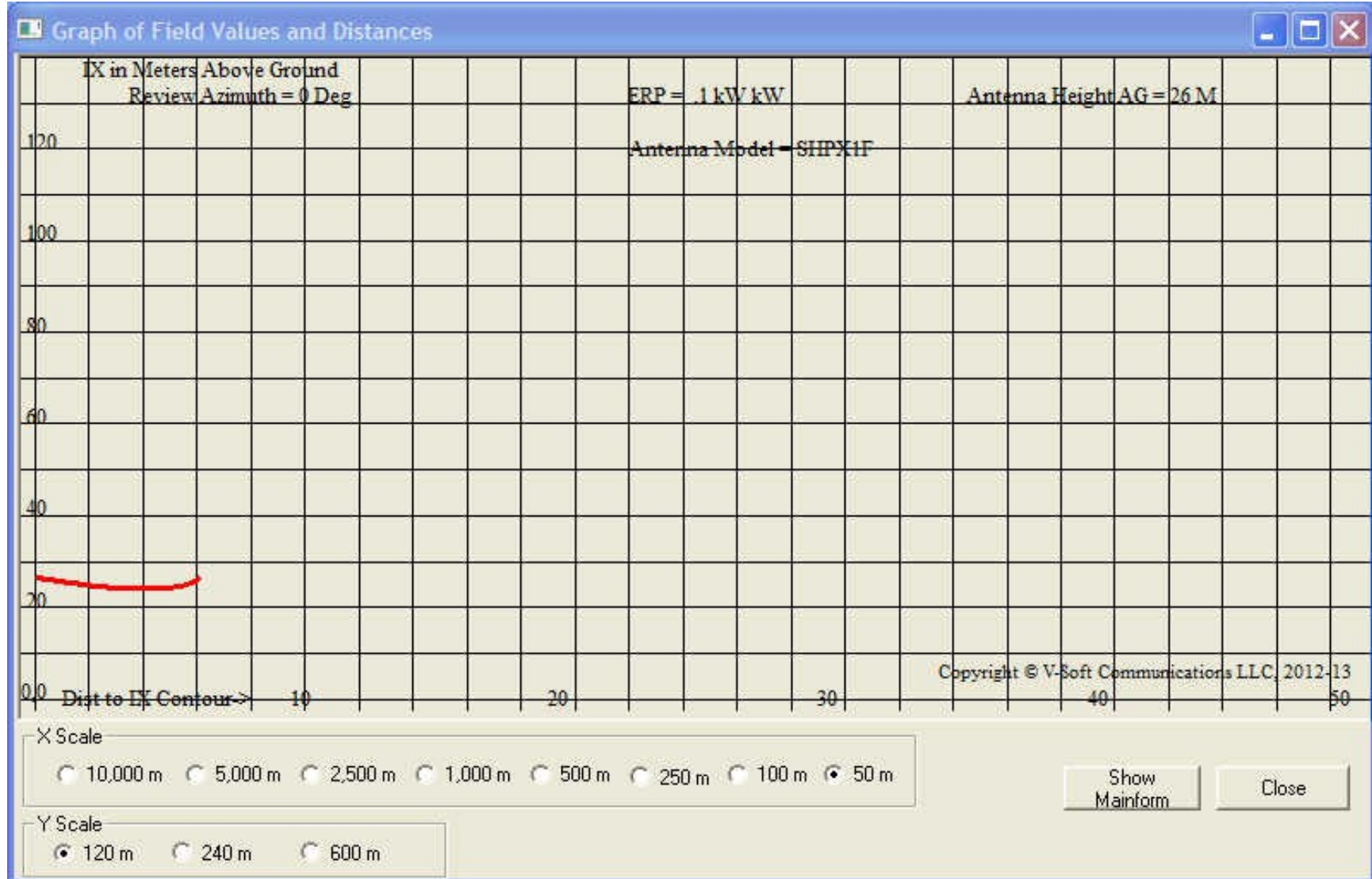
Protected Station= WKNK, 100 kW, 137 M Meters COR AMSL

Depression Angle From Horizon(Deg)	Vertical Relative Field	Horizontal Relative Field	ERP (kw) Contour Along Dep. Angle(m)	Dist to IX Contour Along Angle(m)	Dist to IX Contour From Tower Base(m)	Height IX Above Ground (m)
00.00	1.0	1.0	0.1000	021.5956	021.5956	026.000
01.00	1.0	1.0	0.1000	021.5956	021.5923	025.623
02.00	0.999	1.0	0.0998	021.5740	021.5608	025.247
03.00	0.998	1.0	0.0996	021.5524	021.5229	024.872
04.00	0.996	1.0	0.0992	021.5092	021.4568	024.500
05.00	0.993	1.0	0.0986	021.4444	021.3628	024.131
06.00	0.99	1.0	0.0980	021.3796	021.2625	023.765
07.00	0.987	1.0	0.0974	021.3148	021.1560	023.402
08.00	0.983	1.0	0.0966	021.2285	021.0219	023.046
09.00	0.979	1.0	0.0958	021.1421	020.8818	022.693
10.00	0.974	1.0	0.0949	021.0341	020.7145	022.347
11.00	0.968	1.0	0.0937	020.9045	020.5205	022.011
12.00	0.962	1.0	0.0925	020.7750	020.3210	021.681
13.00	0.956	1.0	0.0914	020.6454	020.1162	021.356
14.00	0.949	1.0	0.0901	020.4942	019.8854	021.042
15.00	0.941	1.0	0.0885	020.3214	019.6290	020.740
16.00	0.933	1.0	0.0870	020.1487	019.3682	020.446
17.00	0.925	1.0	0.0856	019.9759	019.1031	020.160

18.00	0.916	1.0	0.0839	019.7816	018.8134	019.887
19.00	0.907	1.0	0.0823	019.5872	018.5201	019.623
20.00	0.897	1.0	0.0805	019.3712	018.2030	019.375
21.00	0.887	1.0	0.0787	019.1553	017.8830	019.135
22.00	0.877	1.0	0.0769	018.9393	017.5602	018.905
23.00	0.866	1.0	0.0750	018.7018	017.2151	018.693
24.00	0.855	1.0	0.0731	018.4642	016.8679	018.490
25.00	0.843	1.0	0.0711	018.2051	016.4994	018.306
26.00	0.831	1.0	0.0691	017.9459	016.1297	018.133
27.00	0.819	1.0	0.0671	017.6868	015.7590	017.970
28.00	0.806	1.0	0.0650	017.4060	015.3686	017.828
29.00	0.793	1.0	0.0629	017.1253	014.9781	017.697
30.00	0.78	1.0	0.0608	016.8446	014.5878	017.578
31.00	0.766	1.0	0.0587	016.5422	014.1794	017.480
32.00	0.752	1.0	0.0566	016.2399	013.7722	017.394
33.00	0.738	1.0	0.0545	015.9375	013.3663	017.320
34.00	0.723	1.0	0.0523	015.6136	012.9443	017.269
35.00	0.709	1.0	0.0503	015.3113	012.5423	017.218
36.00	0.694	1.0	0.0482	014.9873	012.1250	017.191
37.00	0.679	1.0	0.0461	014.6634	011.7107	017.175
38.00	0.664	1.0	0.0441	014.3395	011.2997	017.172
39.00	0.648	1.0	0.0420	013.9939	010.8753	017.193
40.00	0.633	1.0	0.0401	013.6700	010.4718	017.213
41.00	0.617	1.0	0.0381	013.3245	010.0561	017.258
42.00	0.601	1.0	0.0361	012.9789	009.6452	017.315
43.00	0.586	1.0	0.0343	012.6550	009.2553	017.369
44.00	0.57	1.0	0.0325	012.3095	008.8547	017.449
45.00	0.554	1.0	0.0307	011.9640	008.4598	017.540
46.00	0.537	1.0	0.0288	011.5968	008.0558	017.658
47.00	0.521	1.0	0.0271	011.2513	007.6734	017.771
48.00	0.505	1.0	0.0255	010.9058	007.2974	017.895
49.00	0.489	1.0	0.0239	010.5602	006.9281	018.030
50.00	0.473	1.0	0.0224	010.2147	006.5659	018.175
51.00	0.457	1.0	0.0209	009.8692	006.2109	018.330
52.00	0.441	1.0	0.0194	009.5237	005.8633	018.495
53.00	0.425	1.0	0.0181	009.1781	005.5235	018.670
54.00	0.409	1.0	0.0167	008.8326	005.1917	018.854
55.00	0.394	1.0	0.0155	008.5087	004.8804	019.030
56.00	0.378	1.0	0.0143	008.1631	004.5648	019.232

57.00	0.362	1.0	0.0131	007.8176	004.2578	019.444
58.00	0.347	1.0	0.0120	007.4937	003.9710	019.645
59.00	0.332	1.0	0.0110	007.1697	003.6927	019.854
60.00	0.317	1.0	0.0100	006.8458	003.4229	020.071
61.00	0.302	1.0	0.0091	006.5219	003.1619	020.296
62.00	0.288	1.0	0.0083	006.2195	002.9199	020.508
63.00	0.273	1.0	0.0075	005.8956	002.6765	020.747
64.00	0.259	1.0	0.0067	005.5933	002.4519	020.973
65.00	0.245	1.0	0.0060	005.2909	002.2360	021.205
66.00	0.232	1.0	0.0054	005.0102	002.0378	021.423
67.00	0.219	1.0	0.0048	004.7294	001.8479	021.647
68.00	0.206	1.0	0.0042	004.4487	001.6665	021.875
69.00	0.193	1.0	0.0037	004.1679	001.4937	022.109
70.00	0.181	1.0	0.0033	003.9088	001.3369	022.327
71.00	0.169	1.0	0.0029	003.6497	001.1882	022.549
72.00	0.157	1.0	0.0025	003.3905	001.0477	022.775
73.00	0.146	1.0	0.0021	003.1530	000.9218	022.985
74.00	0.135	1.0	0.0018	002.9154	000.8036	023.198
75.00	0.124	1.0	0.0015	002.6779	000.6931	023.413
76.00	0.114	1.0	0.0013	002.4619	000.5956	023.611
77.00	0.104	1.0	0.0011	002.2459	000.5052	023.812
78.00	0.095	1.0	0.0009	002.0516	000.4265	023.993
79.00	0.086	1.0	0.0007	001.8572	000.3544	024.177
80.00	0.077	1.0	0.0006	001.6629	000.2888	024.362
81.00	0.069	1.0	0.0005	001.4901	000.2331	024.528
82.00	0.061	1.0	0.0004	001.3173	000.1833	024.695
83.00	0.054	1.0	0.0003	001.1662	000.1421	024.843
84.00	0.047	1.0	0.0002	001.0150	000.1061	024.991
85.00	0.041	1.0	0.0002	000.8854	000.0772	025.118
86.00	0.035	1.0	0.0001	000.7558	000.0527	025.246
87.00	0.029	1.0	0.0001	000.6263	000.0328	025.375
88.00	0.024	1.0	0.0001	000.5183	000.0181	025.482
89.00	0.02	1.0	0.0000	000.4319	000.0075	025.568
90.00	0.016	1.0	0.0000	000.3455	000.0000	025.654

Below is a graphic and tabular output showing the interfering 141 dB F(50,10) contour of the proposed facility, with respect to WBYW, which does not reach ground level. There are no tall buildings within this contour.



PANAMA CITY, FL LPFM

Translator 74.1204(d) Showing

Translator Maximum Licensed ERP = 0.1

Translator Antenna Height AG = 26 Meters

NEW Antenna Model = SHPX1F

Protected Station's Contour = 101.1225 dBu

Translator's full Interference contour 141.1225

Review Azimuth = 0 Degrees True

Horizontal Relative Field at Review Azimuth = 1.000

Horizontal Translator ERP at Review Azimuth = 0.1 kW

Distance between stations = 2.2

Protected Station= WBYW, 6 kW, 79 M Meters COR AMSL

Depression Angle From Horizon(Deg)	Vertical Relative Field	Horizontal Relative Field	ERP (kw) Contour Dep.	Dist to IX Along Angle(m)	Dist to IX Contour From Tower Base(m)	Height IX Above Ground (m)
00.00	1.0	1.0	0.1000	006.1642	006.1642	026.000
01.00	1.0	1.0	0.1000	006.1642	006.1632	025.892
02.00	0.999	1.0	0.0998	006.1580	006.1543	025.785
03.00	0.998	1.0	0.0996	006.1518	006.1434	025.678
04.00	0.996	1.0	0.0992	006.1395	006.1246	025.572
05.00	0.993	1.0	0.0986	006.1210	006.0977	025.467
06.00	0.99	1.0	0.0980	006.1025	006.0691	025.362
07.00	0.987	1.0	0.0974	006.0840	006.0387	025.259
08.00	0.983	1.0	0.0966	006.0594	006.0004	025.157
09.00	0.979	1.0	0.0958	006.0347	005.9604	025.056
10.00	0.974	1.0	0.0949	006.0039	005.9127	024.957
11.00	0.968	1.0	0.0937	005.9669	005.8573	024.861
12.00	0.962	1.0	0.0925	005.9299	005.8004	024.767
13.00	0.956	1.0	0.0914	005.8930	005.7419	024.674
14.00	0.949	1.0	0.0901	005.8498	005.6760	024.585
15.00	0.941	1.0	0.0885	005.8005	005.6028	024.499
16.00	0.933	1.0	0.0870	005.7512	005.5284	024.415
17.00	0.925	1.0	0.0856	005.7019	005.4527	024.333
18.00	0.916	1.0	0.0839	005.6464	005.3700	024.255

19.00	0.907	1.0	0.0823	005.5909	005.2863	024.180
20.00	0.897	1.0	0.0805	005.5293	005.1958	024.109
21.00	0.887	1.0	0.0787	005.4676	005.1045	024.041
22.00	0.877	1.0	0.0769	005.4060	005.0123	023.975
23.00	0.866	1.0	0.0750	005.3382	004.9138	023.914
24.00	0.855	1.0	0.0731	005.2704	004.8147	023.856
25.00	0.843	1.0	0.0711	005.1964	004.7095	023.804
26.00	0.831	1.0	0.0691	005.1224	004.6040	023.754
27.00	0.819	1.0	0.0671	005.0485	004.4982	023.708
28.00	0.806	1.0	0.0650	004.9683	004.3868	023.668
29.00	0.793	1.0	0.0629	004.8882	004.2753	023.630
30.00	0.78	1.0	0.0608	004.8081	004.1639	023.596
31.00	0.766	1.0	0.0587	004.7218	004.0473	023.568
32.00	0.752	1.0	0.0566	004.6355	003.9311	023.544
33.00	0.738	1.0	0.0545	004.5492	003.8152	023.522
34.00	0.723	1.0	0.0523	004.4567	003.6948	023.508
35.00	0.709	1.0	0.0503	004.3704	003.5800	023.493
36.00	0.694	1.0	0.0482	004.2779	003.4609	023.485
37.00	0.679	1.0	0.0461	004.1855	003.3427	023.481
38.00	0.664	1.0	0.0441	004.0930	003.2253	023.480
39.00	0.648	1.0	0.0420	003.9944	003.1042	023.486
40.00	0.633	1.0	0.0401	003.9019	002.9890	023.492
41.00	0.617	1.0	0.0381	003.8033	002.8704	023.505
42.00	0.601	1.0	0.0361	003.7047	002.7531	023.521
43.00	0.586	1.0	0.0343	003.6122	002.6418	023.536
44.00	0.57	1.0	0.0325	003.5136	002.5275	023.559
45.00	0.554	1.0	0.0307	003.4150	002.4147	023.585
46.00	0.537	1.0	0.0288	003.3102	002.2994	023.619
47.00	0.521	1.0	0.0271	003.2115	002.1903	023.651
48.00	0.505	1.0	0.0255	003.1129	002.0829	023.687
49.00	0.489	1.0	0.0239	003.0143	001.9775	023.725
50.00	0.473	1.0	0.0224	002.9157	001.8741	023.766
51.00	0.457	1.0	0.0209	002.8170	001.7728	023.811
52.00	0.441	1.0	0.0194	002.7184	001.6736	023.858
53.00	0.425	1.0	0.0181	002.6198	001.5766	023.908
54.00	0.409	1.0	0.0167	002.5211	001.4819	023.960
55.00	0.394	1.0	0.0155	002.4287	001.3930	024.011
56.00	0.378	1.0	0.0143	002.3301	001.3030	024.068
57.00	0.362	1.0	0.0131	002.2314	001.2153	024.129

58.00	0.347	1.0	0.0120	002.1390	001.1335	024.186
59.00	0.332	1.0	0.0110	002.0465	001.0540	024.246
60.00	0.317	1.0	0.0100	001.9540	000.9770	024.308
61.00	0.302	1.0	0.0091	001.8616	000.9025	024.372
62.00	0.288	1.0	0.0083	001.7753	000.8334	024.433
63.00	0.273	1.0	0.0075	001.6828	000.7640	024.501
64.00	0.259	1.0	0.0067	001.5965	000.6999	024.565
65.00	0.245	1.0	0.0060	001.5102	000.6382	024.631
66.00	0.232	1.0	0.0054	001.4301	000.5817	024.694
67.00	0.219	1.0	0.0048	001.3500	000.5275	024.757
68.00	0.206	1.0	0.0042	001.2698	000.4757	024.823
69.00	0.193	1.0	0.0037	001.1897	000.4263	024.889
70.00	0.181	1.0	0.0033	001.1157	000.3816	024.952
71.00	0.169	1.0	0.0029	001.0417	000.3392	025.015
72.00	0.157	1.0	0.0025	000.9678	000.2991	025.080
73.00	0.146	1.0	0.0021	000.9000	000.2631	025.139
74.00	0.135	1.0	0.0018	000.8322	000.2294	025.200
75.00	0.124	1.0	0.0015	000.7644	000.1978	025.262
76.00	0.114	1.0	0.0013	000.7027	000.1700	025.318
77.00	0.104	1.0	0.0011	000.6411	000.1442	025.375
78.00	0.095	1.0	0.0009	000.5856	000.1218	025.427
79.00	0.086	1.0	0.0007	000.5301	000.1012	025.480
80.00	0.077	1.0	0.0006	000.4746	000.0824	025.533
81.00	0.069	1.0	0.0005	000.4253	000.0665	025.580
82.00	0.061	1.0	0.0004	000.3760	000.0523	025.628
83.00	0.054	1.0	0.0003	000.3329	000.0406	025.670
84.00	0.047	1.0	0.0002	000.2897	000.0303	025.712
85.00	0.041	1.0	0.0002	000.2527	000.0220	025.748
86.00	0.035	1.0	0.0001	000.2157	000.0150	025.785
87.00	0.029	1.0	0.0001	000.1788	000.0094	025.821
88.00	0.024	1.0	0.0001	000.1479	000.0052	025.852
89.00	0.02	1.0	0.0000	000.1233	000.0022	025.877
90.00	0.016	1.0	0.0000	000.0986	000.0000	025.901