

Exhibit 13-B
Section 74.1204
Contour Protection to KERW

This comprehensive exhibit has been prepared to demonstrate that the proposed new FM translator will not cause prohibited interference to KERW, Channel 267B, Los Osos-Baywood Park, California. The KERW F(50,50) protected contour at the proposed new FM translator application site is 79.1 dBu. Therefore, the proposed new FM translator F(50,10) interfering contour with respect to KERW is the 119.1 dBu contour. Using the FCC's FM propagation curves program, the 121.0 dBu contour was calculated to extend 123 meters from the transmit antenna. The attached Google Earth screenshot shows the area around the tower and a 123 meter radius from tower is shown in yellow. The only building within the 123 meter radius is the unoccupied transmitter building. The nearest occupied building is approximately 207 meters to the southeast and is identified on the Google Earth Screenshot. Therefore, it is believed that the proposed modification to proposed new FM translator will not cause prohibited interference to KERW as there is no population or occupied buildings within the area where interference occurs.

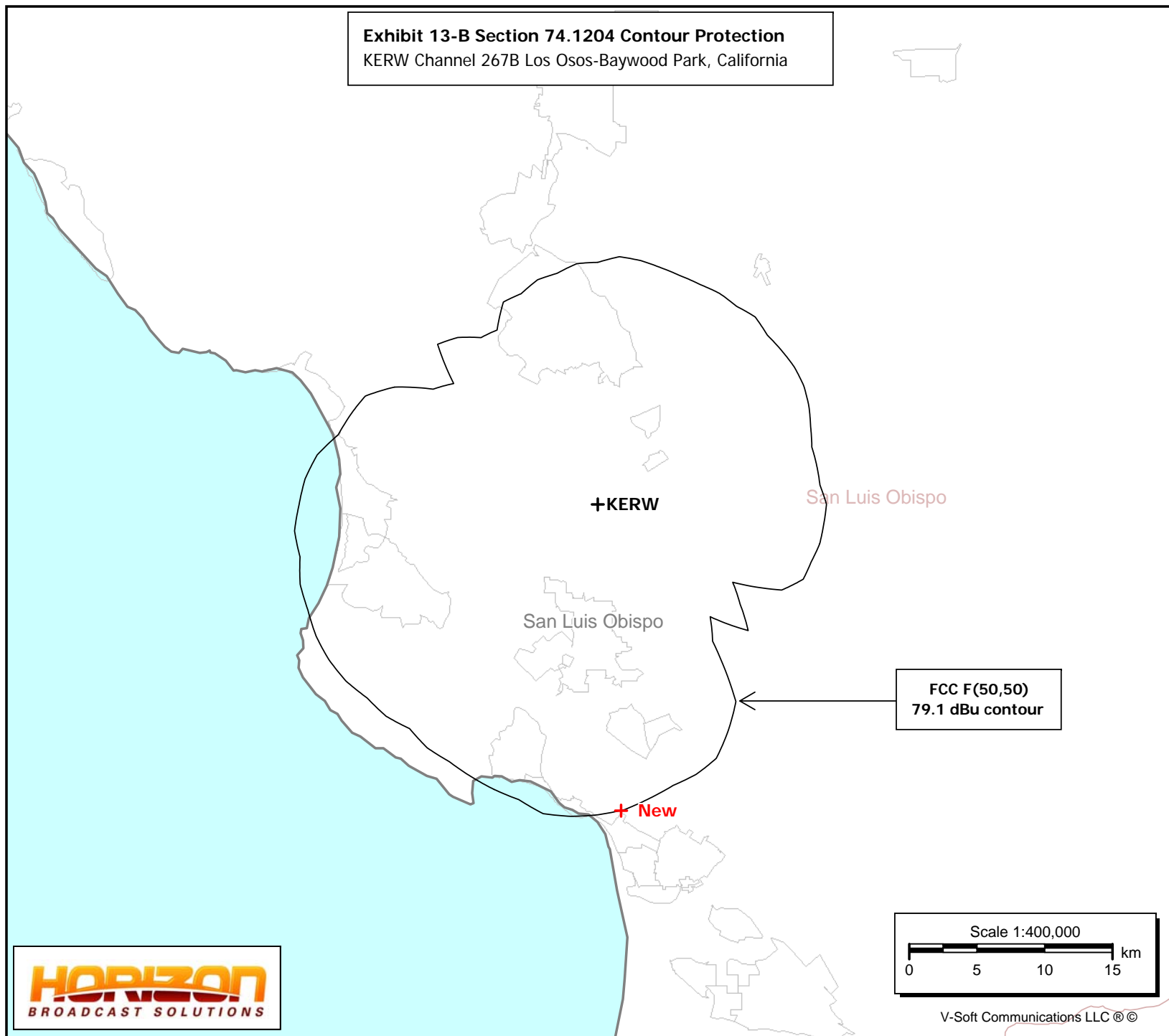
New

Pismo Beach, CA
Latitude: 35-09-24 N
Longitude: 120-38-10.30 W
ERP: 0.25 kW
HAAT: 133.85 m
Channel: 265
Frequency: 100.9 MHz
AMSL Height: 240.1 m
Elevation: 198.1 m
Horiz. Pattern: Directional
Vert. Pattern: No
Prop Model: None

KERW

Los Osos-Baywood Park, CA
BMLED20160809AAI
Latitude: 35-21-37 N
Longitude: 120-39-18 W
ERP: 3.60 kW
HAAT: 502.0 m
Channel: 267
Frequency: 101.3 MHz
AMSL Height: 829.0 m
Elevation: 745.0 m
Horiz. Pattern: Omni
Vert. Pattern: No
Prop Model: None

Exhibit 13-B Section 74.1204 Contour Protection
KERW Channel 267B Los Osos-Baywood Park, California



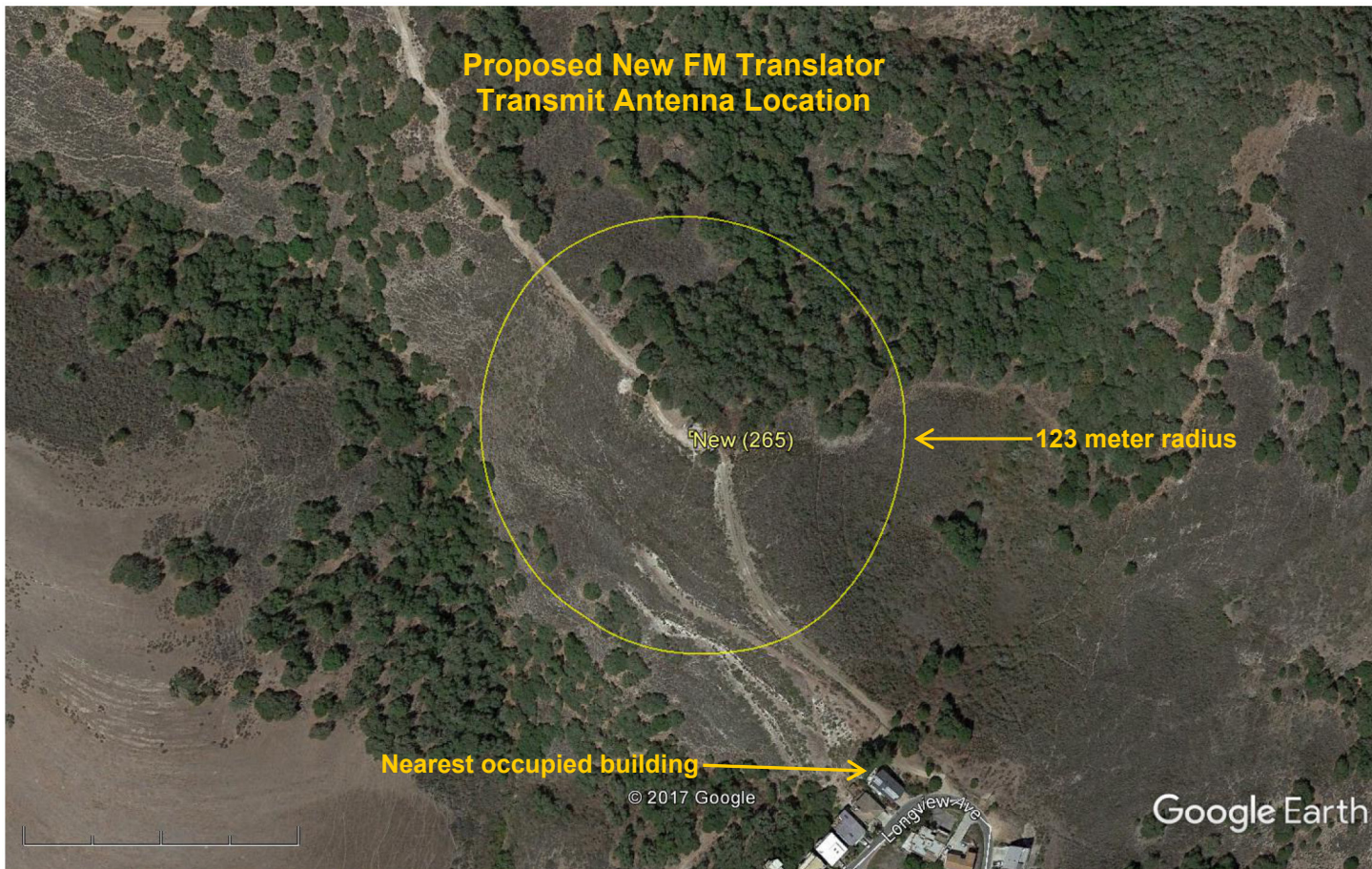
HORIZON
BROADCAST SOLUTIONS

Scale 1:400,000
0 5 10 15 km

V-Soft Communications LLC ©

Select Contour Type:	<div>F(50,50) Service Contour -- FM and NTSC (analog) TV F(50,10) Interfering Contour F(50,90) Digital TV Service Contour</div>
Select Channel Range: (not TV Virtual Channel)	<div>FM Radio or TV Transmit Channels 2-6 TV Transmit Channels 7-13 TV Transmit Channels 14-69</div>
Find This:	<div>Field Strength, given a Distance (in km) Distance, Given a Field Strength (in dBu) FM ERP, given Distance and Field Strength [F(50,50) Service Contour]</div>
<div>.25 ERP (kW)</div>	<div>Distance (km)</div>
<div>134 HAAT (meters)</div>	<div>119.1 Field (dBu)</div>
<div>Find Result</div> <div>Clear Form</div>	
Results:	
<div>Calculated Distance = 0.123 km Free Space equation used to compute distance.</div>	

This function uses the FCC's CURVES program to make calculations of the F(50,50) FM and NTSC (analog) TV service curves, the F(50,10) interfering signal curves, and the F(50,90) digital TV service curves. Printable copies of these propagation curves are available at [FM and TV Propagation Curves Graphs \(/media/radio/fm-and-tv-propagation-curves-graphs\)](https://www.fcc.gov/media/radio/fm-and-tv-propagation-curves-graphs).



Google Earth

feet 1000
meters 400

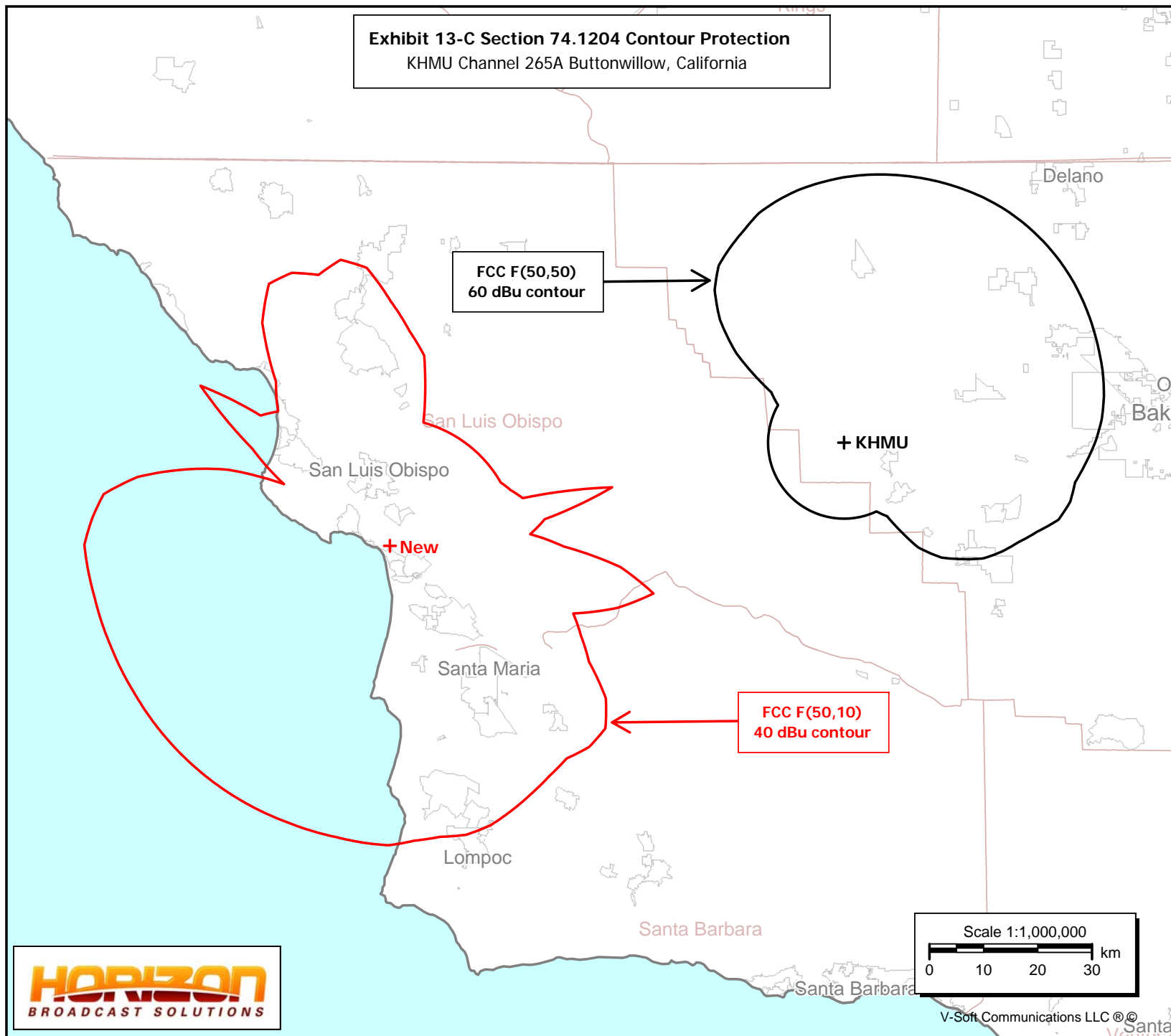


New

Pismo Beach, CA
Latitude: 35-09-24 N
Longitude: 120-38-10.30 W
ERP: 0.25 kW
HAAT: 133.85 m
Channel: 265
Frequency: 100.9 MHz
AMSL Height: 240.1 m
Elevation: 198.1 m
Horiz. Pattern: Directional
Vert. Pattern: No
Prop Model: None

KHMU

Buttonwillow, CA
BLH20150224AAB
Latitude: 35-19-40 N
Longitude: 119-42-58 W
ERP: 3.80 kW
HAAT: 126.0 m
Channel: 265
Frequency: 100.9 MHz
AMSL Height: 656.0 m
Elevation: 635.0 m
Horiz. Pattern: Omni
Vert. Pattern: No
Prop Model: None

Exhibit 13-C Section 74.1204 Contour Protection
KHMU Channel 265A Buttonwillow, California

HORIZON
BROADCAST SOLUTIONS

New

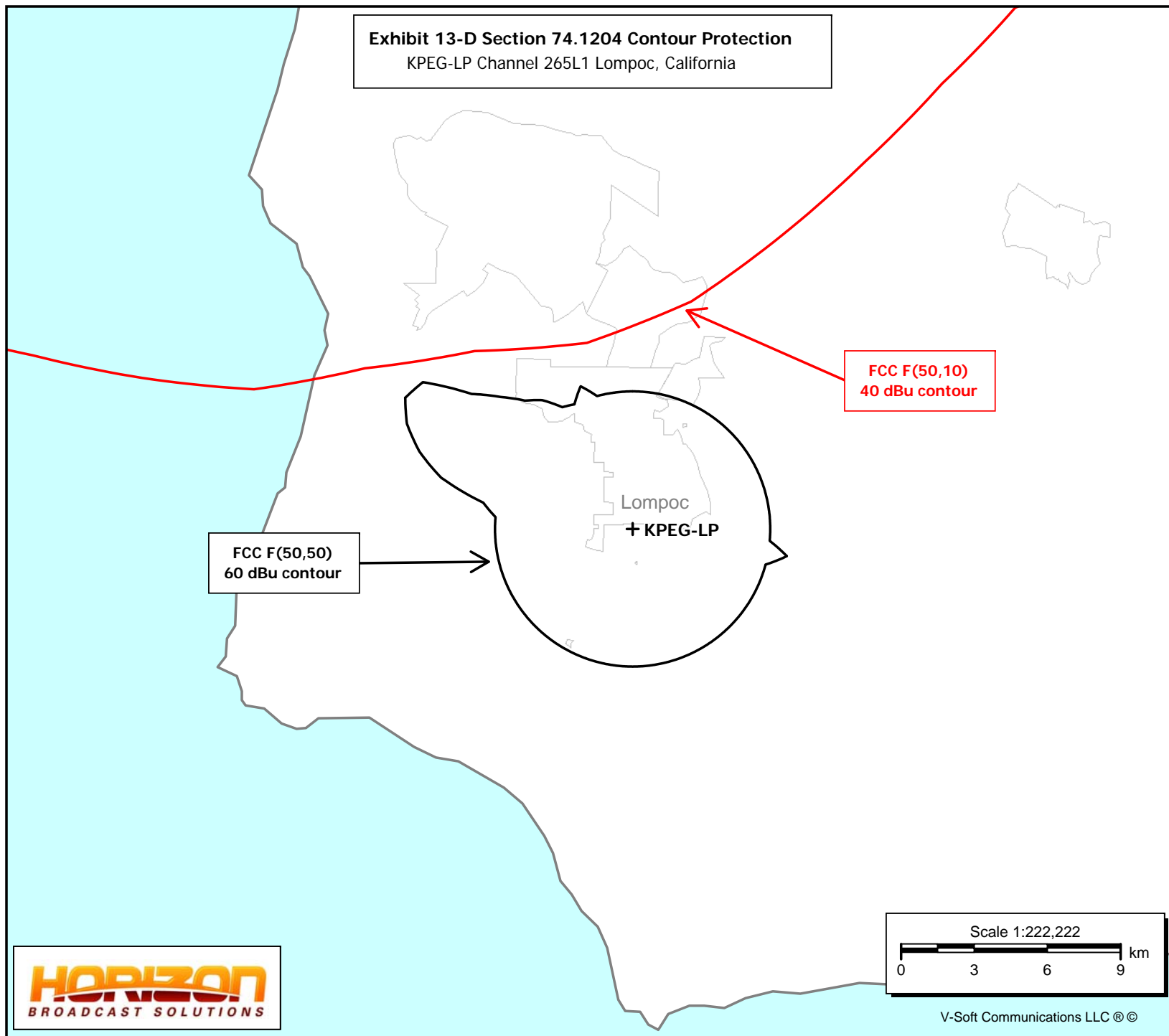
Pismo Beach, CA
Latitude: 35-09-24 N
Longitude: 120-38-10.30 W
ERP: 0.25 kW
HAAT: 133.85 m
Channel: 265
Frequency: 100.9 MHz
AMSL Height: 240.1 m
Elevation: 198.1 m
Horiz. Pattern: Directional
Vert. Pattern: No
Prop Model: None

KPEG-LP

Lompoc, CA
BLL20150511AAP
Latitude: 34-37-45 N
Longitude: 120-28-01 W
ERP: 0.10 kW
HAAT: 1.91 m
Channel: 265
Frequency: 100.9 MHz
AMSL Height: 118.3 m
Elevation: 107.6 m
Horiz. Pattern: Omni
Vert. Pattern: No
Prop Model: None

Exhibit 13-D Section 74.1204 Contour Protection

KPEG-LP Channel 265L1 Lompoc, California



**FCC F(50,10)
40 dBu contour**

**FCC F(50,50)
60 dBu contour**

Lompoc
+ KPEG-LP

HORIZON
BROADCAST SOLUTIONS

Scale 1:222,222

0 3 6 9 km

V-Soft Communications LLC ©

New

Pismo Beach, CA
Latitude: 35-09-24 N
Longitude: 120-38-10.30 W
ERP: 0.25 kW
HAAT: 133.85 m
Channel: 265
Frequency: 100.9 MHz
AMSL Height: 240.1 m
Elevation: 198.1 m
Horiz. Pattern: Directional
Vert. Pattern: No
Prop Model: None

KRQK

Lompoc, CA
BLH19891127KC
Latitude: 34-44-30 N
Longitude: 120-26-45 W
ERP: 3.70 kW
HAAT: 263.0 m
Channel: 262
Frequency: 100.3 MHz
AMSL Height: 416.0 m
Elevation: 378.0 m
Horiz. Pattern: Omni
Vert. Pattern: No
Prop Model: None

Exhibit 13-E Section 74.1204 Contour Protection

KRQK Channel 262B1 Lompoc, California

FCC F(50,10)
97 dBu contour

⊕ New

Santa Maria

+ KRQK

Lompoc

FCC F(50,50)
57 dBu contour

Santa Barbara

Santa Barbara

HORIZON
BROADCAST SOLUTIONS

Scale 1:900,000

0 10 20 30 km

V-Soft Communications LLC ©