

TECHNICAL EXHIBIT
DTV MAXIMIZATION APPLICATION
STATION WNEP-DT
SCRANTON, PENNSYLVANIA
CH 49 185 KW 512 M

Technical Narrative

This Technical Exhibit supports an application for digital television (DTV) station WNEP-DT for its "maximized" DTV operation at Scranton, Pennsylvania. This application requests a construction permit (CP) for WNEP-DT digital television operation on channel 49 at Scranton with a non-directional effective radiated power of 185 kilowatts.

Proposed Facilities

Station WNEP-DT proposes to operate DTV channel 49 from its licensed NTSC facility. The antenna height above average terrain for the channel 49 DTV operation will be 512 meters. The proposed WNEP-DT effective radiated power exceeds the Commission's *Appendix B* allocated maximum effective radiated power in some azimuthal directions for WNEP-DT.¹ Therefore, an allocation study was completed to ensure no prohibited interference would occur.

¹ See Seventh Report And Order And Eighth Further Notice Of Proposed Rule Making in the Matter of Advanced Television Systems and their Impact Upon the Existing Television Broadcast Service, MB Docket 87-268, Released August 6, 2007; Adopted August 1, 2007.

The proposed DTV transmitter site will be located at WNEP-TV's Licensed transmitting tower. Therefore, the proposed site location is:

41° 10' 57" North Latitude
75° 52' 15" West Longitude

A sketch of antenna and pertinent elevations are included as Figure 1.

The Appendix contains the vertical plane radiation pattern for the proposed antenna system.

Figure 2 is a map showing the proposed DTV predicted coverage contour and the associated DTV appendix B Noise-Limited coverage contour. The extent of the contours have been calculated using the normal FCC prediction method. The Scranton city limits were derived from information contained in the 2000 U.S. Census of Population and Housing.

Population Served

The herein proposed WNEP-DT "maximized" facility is predicted to serve 1,910,119 persons, post-transition based upon the 2000 Census. WNEP-DT's associated Appendix B facility is predicted to serve 1,732,000 persons. Therefore, the herein proposed WNEP-DT facility would serve more than 100% of WNEP-DT's Appendix B population. The OET-69 studies were conducted using a cell size of 2.0 km/side and distance increments for Longley-Rice analysis of 0.5 km.

Allocation Considerations

The proposed WNEP-DT Channel 49 facility meets the requirements of Section 73.623 of the FCC Rules concerning predicted interference to other Appendix B DTV allotments. Longley-Rice interference analyses were conducted pursuant to the requirements of the FCC Rules; OET Bulletin No. 69; and published FCC guidelines for preparation of such interference analyses. The Longley-Rice interference analyses were conducted using the software developed by du Treil, Lundin & Rackley, Inc. based on the FCC published software routines.² Stations selected for analysis were determined pursuant to the distance requirements outlined in the FCC DTV Processing Guidelines Public Notice. The results of the interference analyses for the proposed WNEP-DT facility are summarized herein at Figure 3. As indicated therein, the proposed facility will meet the 0.5% criterion outlined in the FCC Rules and published guidelines with respect to all considered stations.³

Radiofrequency Electromagnetic Field Exposure

The proposed WNEP-DT facilities were evaluated in terms of potential radiofrequency electromagnetic field exposure at ground level to workers and the general public. The radiation center for the proposed WNEP-DT antenna is located 247 meters above ground level. The maximum

² The duTreil, Lundin & Rackley, Inc. DTV interference analysis program is based on the program and procedures outlined by the FCC in the Sixth Report and Order; subsequent Memorandum Opinion and Order; and FCC OET Bulletin No. 69. A nominal grid size resolution of 2 km was employed.

effective radiated power is 185 kilowatts. A "worst case" downward relative field value of 0.25 is assumed for the antenna's downward radiation. The calculated power density at a point 2 meters above ground level is 0.0063 mW/cm². This is less than 5 percent of the Commission's recommended limit of 0.455 mW/cm² for channel 49 for an "uncontrolled" environment.

Access to the transmitting site is restricted and appropriately marked with warning signs. As this is a multi-user site an agreement between the stations will control access. In the event that workers or other authorized personnel enter restricted areas or climb the tower, appropriate measures will be taken to assure worker safety with respect to radio frequency radiation exposure. Such measures include reducing the average exposure by spreading out the work over a longer period of time, wearing "accepted" RFR protective clothing and/or RFR exposure monitors or scheduling work when the stations are at reduced power or shut down. The proposed WNEP-DT operation appears to be otherwise categorically excluded from environmental processing.

3 Interference analysis results reflect the net change in interference to a given station considering the interference predicted to occur from all other stations (i.e. "masking") including the allotment facility for WNEP-DT. This properly reflects the net interference change for determining compliance with the FCC 0.5% *de minimis* standard.

It is noted that this statement only addresses the potential for radiofrequency electromagnetic field exposure. All other aspects of the environmental processing analysis will be or already have been provided to the FCC by the tower owner.

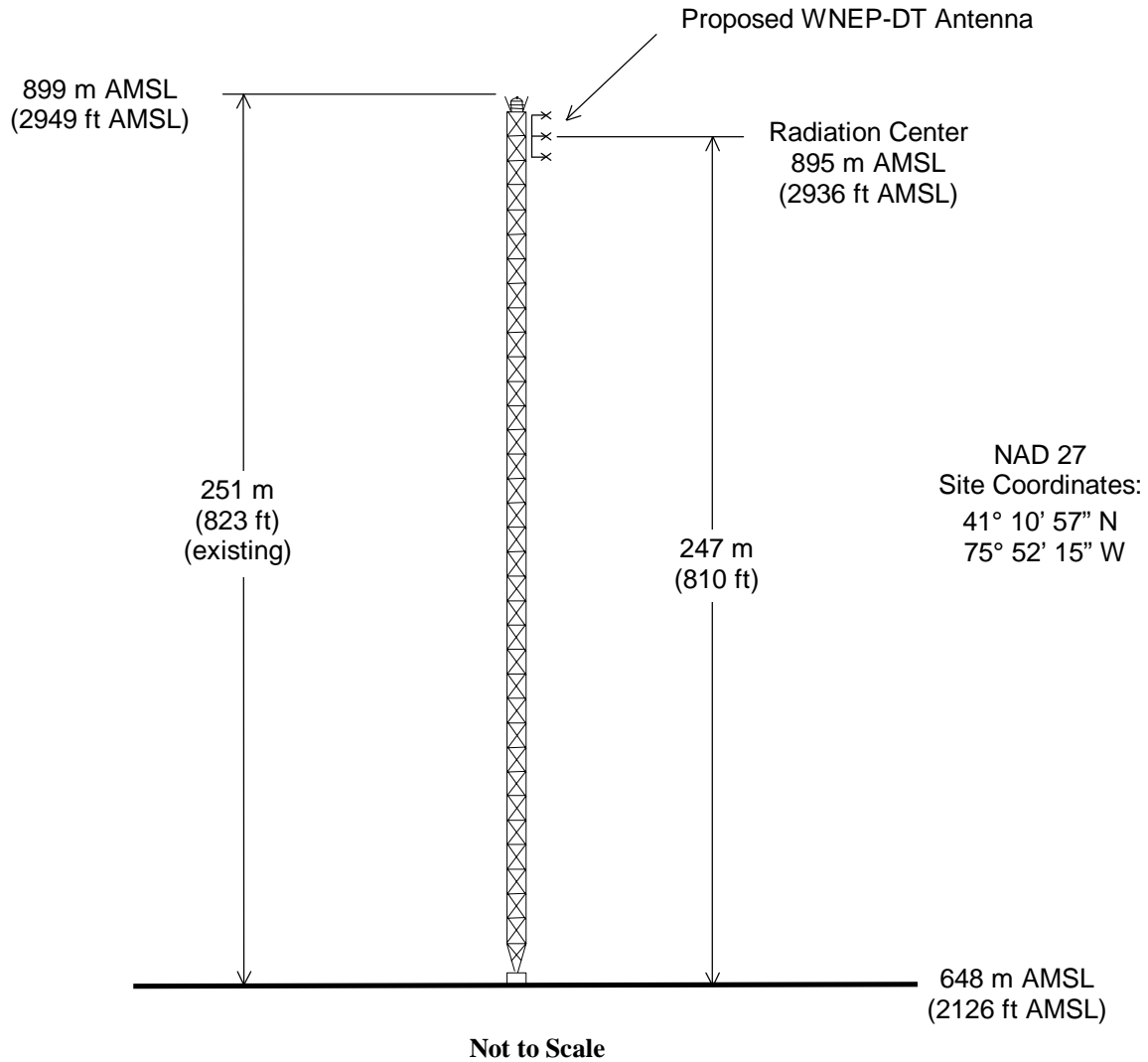
Charles Cooper

du Treil, Lundin & Rackley, Inc.
201 Fletcher Avenue
Sarasota, Florida 32437
941.329.6000

June 9, 2008



ASR: 1043700

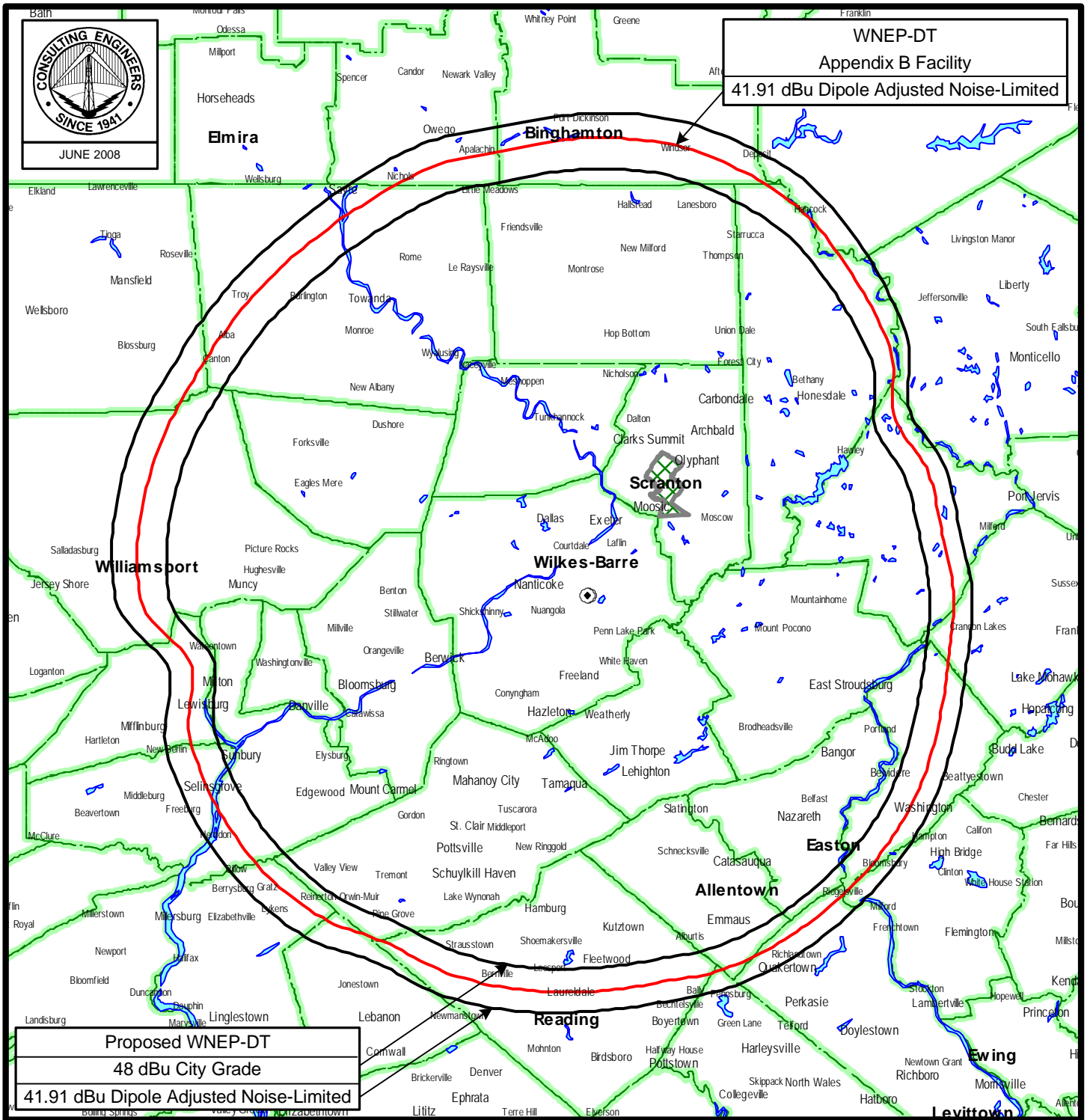


ANTENNA AND SUPPORTING STRUCTURE

DTV STATION WNEP-DT
SCRANTON, PENNSYLVANIA
CH 49 185 KW 512 M

du Treil, Lundin & Rackley, Inc. Sarasota, Florida

Figure 2



PREDICTED COVERAGE CONTOURS

DTV STATION WNEP-DT
SCRANTON, PENNSYLVANIA
CH 49 185 KW 512 M

du Treil, Lundin & Rackley, Inc Sarasota, Florida

Figure 3

TW Census data selected 2000
Post Transition Data Base Selected /export/home/cdbb/pt_tvdb.sff

TV INTERFERENCE and SPACING ANALYSIS PROGRAM

Date: 06-09-2008 Time: 11:25:51

Record Selected for Analysis

WNEP-TV USERRECORD-01 SCRANTON PA US
Channel 49 ERP 185. kW HAAT 508. m RCAMSL 00895 m
Latitude 041-10-57 Longitude 0075-52-15
Status APP Zone 1 Border
Last update Cutoff date Docket
Comments
Applicant

Cell Size for Service Analysis 2.0 km/side

Distance Increments for Longley-Rice Analysis 0.50 km

Facility meets maximum height/power limits

Azimuth (Deg)	ERP (kW)	HAAT (m)	41.0 dBu F(50,90) (km)
0.0	185.000	670.2	108.3
45.0	185.000	439.6	94.0
90.0	185.000	339.6	86.8
135.0	185.000	418.1	92.8
180.0	185.000	432.8	93.6
225.0	185.000	537.9	101.6
270.0	185.000	610.1	105.8
315.0	185.000	619.7	106.2

Evaluation toward Class A Stations

Contour overlap to Class A station
WNDR-LP 49 SYRACUSE NY BLTTA 20070724AEG

Class A Evaluation Complete

Proposed facility OK to FCC Monitoring Stations

Proposed facility OK toward West Virginia quiet zone

Proposed facility OK toward Table Mountain

Figure 3

Proposed facility is within the Canadian coordination distance
Distance to border = 282.9km

Proposed facility is beyond the Mexican coordination distance

Proposed station is OK toward AM broadcast stations

Start of Interference Analysis

Channel	Call	City/State	ARN
49	WNEP-TV	SCRANTON PA	USERRECORD01

Stations Potentially Affected by Proposed Station

Chan	Call	City/State	Dist(km)	Status	Application Ref. No.
35	WYLN-LP	HAZLETON PA	24.7	LIC	BLTTL -19950324IE
47	W47AO	BERWICK PA	34.8	LIC	BLTTL -19940815IF
48	WYDC	CORNING NY	145.7	PLN	DTVPLN -DTVP1715
48	WRNN-TV	KINGSTON NY	164.0	LIC	BLCDT -20040908AMF
48	WRNN-TV	KINGSTON NY	164.0	PLN	DTVPLN -DTVP1716
49	WEDW	BRIDGEPORT CT	224.7	CP	BPEDT -20080207AAV
49	WEDW	BRIDGEPORT CT	224.7	PLN	DTVPLN -DTVP1732
49	WLNE-TV	NEW BEDFORD MA	388.8	LIC	BLCDT -20040930BBS
49	WLNE-TV	NEW BEDFORD MA	388.8	PLN	DTVPLN -DTVP1742
49	WEKW-TV	KEENE NH	354.6	LIC	BLEDT -20030618ABK
49	WEKW-TV	KEENE NH	354.6	PLN	DTVPLN -DTVP1746
49	WWSI	ATLANTIC CITY NJ	215.0	LIC	BLCDT -20020812ABS
49	WWSI	ATLANTIC CITY NJ	215.0	PLN	DTVPLN -DTVP1747
49	WFNY-CA	GLOVERSVILLE NY	246.6	LIC	BLTTL -19970811JF
49	WNDR-LP	SYRACUSE NY	203.7	LIC	BLTTA -20070724AEG
49	WLLS-LP	INDIANA PA	287.5	LIC	BLTTL -19961230JA
49	WHSV-TV	HARRISONBURG VA	371.1	LIC	BLCDT -20060413ACO
49	WHSV-TV	HARRISONBURG VA	371.1	PLN	DTVPLN -DTVP1755

Analysis of Interference to Affected Station 1

Analysis of current record

Channel	Call	City/State	Application Ref. No.
35	WYLN-LP	HAZLETON PA	BLTTL -19950324IE

Stations Potentially Affecting This Station

Chan	Call	City/State	Dist(km)	Status	Application Ref. No.
27	WGTW-TV	BURLINGTON NJ	119.7	LIC	BLCDT -20060105AAR
27	WGTW-TV	BURLINGTON NJ	119.7	PLN	DTVPLN -DTVP1007
28	WBRE-TV	WILKES-BARRE PA	25.0	LIC	BLCT -19891005KF
31	WPPX	WILMINGTON DE	119.7	LIC	BLCDT -20031203AFI
31	WPPX	WILMINGTON DE	119.7	PLN	DTVPLN -DTVP1134
32	WPSG	PHILADELPHIA PA	119.7	LIC	BLCDT -20021025AAS
32	WPSG	PHILADELPHIA PA	119.7	PLN	DTVPLN -DTVP1192

Figure 3

32	WQPX	SCRANTON PA	55.2	LIC	BLCDDT	-20060629AFR
32	WQPX	SCRANTON PA	55.2	PLN	DTVPLN	-DTVP1193
34	WIVT	BINGHAMTON NY	121.3	LIC	BLCT	-20040113ABJ
34	WIVT	BINGHAMTON NY	121.3	PLN	DTVPLN	-DTVP1263
34	WIVT	BINGHAMTON NY	121.3	CP	BPCDDT	-20080314ACR
34	WCAU	PHILADELPHIA PA	119.7	CP	BPCDDT	-20080314ACT
34	WCAU	PHILADELPHIA PA	119.7	PLN	DTVPLN	-DTVP1269
35	WVIT	NEW BRITAIN CT	273.1	LIC	BLCDDT	-20041203AEF
35	WVIT	NEW BRITAIN CT	273.1	PLN	DTVPLN	-DTVP1282
35	WDCA	WASHINGTON DC	243.5	CP MOD	BMPDDT	-20060519ACK
35	WDCA	WASHINGTON DC	244.0	PLN	DTVPLN	-DTVP1283
35	W35BT	DILLSBURG PA	115.4	LIC	BLTTL	-20031121AJD
35	WSEE-TV	ERIE PA	361.7	LIC	BLCT	-20021126AAC
35	WYBE	PHILADELPHIA PA	119.7	LIC	BLET	-20030317DRA
35	WYBE	PHILADELPHIA PA	119.7	PLN	DTVPLN	-DTVP1305
36	WITF-TV	HARRISBURG PA	103.5	LIC	BLEDT	-20000922AHE
36	WITF-TV	HARRISBURG PA	103.5	PLN	DTVPLN	-DTVP1345
38	WSWB	SCRANTON PA	55.2	PLN	DTVPLN	-DTVP1378
39	WLVT-TV	ALLENTOWN PA	62.6	CP	BPEDT	-20080201AQV
39	WLVT-TV	ALLENTOWN PA	62.8	PLN	DTVPLN	-DTVP1413
42	WSKG-TV	BINGHAMTON NY	121.3	LIC	BLEDT	-20050526ACA
42	WSKG-TV	BINGHAMTON NY	121.3	PLN	DTVPLN	-DTVP1511
42	WTFX-TV	PHILADELPHIA PA	119.8	LIC	BLCDDT	-20070914AAK
42	WTFX-TV	PHILADELPHIA PA	119.7	PLN	DTVPLN	-DTVP1514
42	WTFX-TV	PHILADELPHIA PA	119.8	CP	BPCDDT	-20080313ACO
43	WNJT	TRENTON NJ	131.6	LIC	BLEDT	-20030411AAE
43	WNJT	TRENTON NJ	131.4	PLN	DTVPLN	-DTVP1547
49	WGCB-TV	RED LION PA	129.6	LIC	BLCT	-19790419KG
49	WNEP-TV	SCRANTON PA	24.9	LIC	BLCDDT	-20020807AAF
49	WNEP-TV	SCRANTON PA	24.9	PLN	DTVPLN	-DTVP1750
50	940413EW	WILKES-BARRE,SCRANTO PA	33.8	APP	BPTTL	-19940413EW
49	WNEP-TV	SCRANTON PA	24.7	APP	USERRECORD-01	

Proposal causes no interference

#####

Analysis of Interference to Affected Station 2

Analysis of current record

Channel	Call	City/State	Application Ref. No.
47	W47AO	BERWICK PA	BLTTL -19940815IF

Stations Potentially Affecting This Station

Chan	Call	City/State	Dist(km)	Status	Application Ref. No.
39	WLVT-TV	ALLENTOWN PA	81.5	CP	BPEDT -20080201AQV
39	WLVT-TV	ALLENTOWN PA	81.7	PLN	DTVPLN -DTVP1413
40	WICZ-TV	BINGHAMTON NY	118.9	LIC	BLCT -19900206KG
45	WOLF-TV	HAZLETON PA	35.0	LIC	BLCDDT -20050906ACK
45	WOLF-TV	HAZLETON PA	35.0	PLN	DTVPLN -DTVP1630
46	WSKG-TV	BINGHAMTON NY	119.4	LIC	BLET -20040109ACN
46	WFMZ-TV	ALLENTOWN PA	81.5	LIC	BLCDDT -20060621AAU
46	WFMZ-TV	ALLENTOWN PA	81.5	PLN	DTVPLN -DTVP1655
47	WMDT	SALISBURY MD	281.3	LIC	BLCT -20030703ABJ
47	WMDT	SALISBURY MD	281.3	PLN	DTVPLN -DTVP1677

Figure 3

47	WMDT	SALISBURY MD	281.3	CP	BPCDDT	-20080215AEU
47	WNJU	LINDEN NJ	187.8	CP	BPCT	-19991028AAN
47	WLNY-DT	RIVERHEAD NY	277.1	CP MOD	BMPDDT	-20080415AAC
47	WLNY-DT	RIVERHEAD NY	277.1	PLN	DTVPLN	-DTVP1683
47	WTVH	SYRACUSE NY	216.9	LIC	BLCDDT	-20060809ACB
47	WTVH	SYRACUSE NY	216.9	PLN	DTVPLN	-DTVP1684
47	WKBS-TV	ALTOONA PA	193.5	LIC	BLCT	-19850925KE
47	WPMT	YORK PA	113.4	LIC	BMLCDDT	-20041025ABI
47	WPMT	YORK PA	113.4	PLN	DTVPLN	-DTVP1687
47	WUPV	ASHLAND VA	373.6	LIC	BLCDDT	-20060210ABA
47	WUPV	ASHLAND VA	373.6	PLN	DTVPLN	-DTVP1694
49	WNEP-TV	SCRANTON PA	35.0	LIC	BLCDDT	-20020807AAF
49	WNEP-TV	SCRANTON PA	35.0	PLN	DTVPLN	-DTVP1750
49	WNEP-TV	SCRANTON PA	34.8	APP	USERRECORD-01	

Proposal causes no interference

#####

Analysis of Interference to Affected Station 3

Analysis of current record

Channel	Call	City/State	Application Ref. No.
48	WYDC	CORNING NY	DTVPLN -DTVP1715

Stations Potentially Affecting This Station

Chan	Call	City/State	Dist(km)	Status	Application Ref. No.
47	WTVH	SYRACUSE NY	116.4	LIC	BLCDDT -20060809ACB
47	WTVH	SYRACUSE NY	116.4	PLN	DTVPLN -DTVP1684
48	WRC-TV	WASHINGTON DC	358.1	LIC	BLCDDT -20000216AAT
48	WRC-TV	WASHINGTON DC	358.1	PLN	DTVPLN -DTVP1701
48	WRNN-TV	KINGSTON NY	266.5	LIC	BLCDDT -20040908AMF
48	WRNN-TV	KINGSTON NY	266.5	PLN	DTVPLN -DTVP1716
48	WPXI	PITTSBURGH PA	311.4	LIC	BLCDDT -20050609AAQ
48	WPXI	PITTSBURGH PA	311.4	PLN	DTVPLN -DTVP1717
49	WNEP-TV	SCRANTON PA	145.7	PLN	DTVPLN -DTVP1750
49	WNEP-TV	SCRANTON PA	145.7	APP	USERRECORD-01

Proposal causes no interference

#####

Analysis of Interference to Affected Station 4

Analysis of current record

Channel	Call	City/State	Application Ref. No.
48	WRNN-TV	KINGSTON NY	BLCDDT -20040908AMF

Stations Potentially Affecting This Station

Chan	Call	City/State	Dist(km)	Status	Application Ref. No.
47	WLNY-DT	RIVERHEAD NY	108.6	CP MOD	BMPDDT -20080415AAC
47	WLNY-DT	RIVERHEAD NY	108.6	PLN	DTVPLN -DTVP1683
48	WRC-TV	WASHINGTON DC	388.4	LIC	BLCDDT -20000216AAT

Figure 3

Chan	Call	City/State	Dist(km)	Status	Application Ref. No.
48	WRC-TV	WASHINGTON DC	388.4	PLN	DTVPLN -DTVP1701
48	WLED-TV	LITTLETON NH	365.7	LIC	BLEDT -20020529ABG
48	WLED-TV	LITTLETON NH	365.7	PLN	DTVPLN -DTVP1714
48	WYDC	CORNING NY	266.5	PLN	DTVPLN -DTVP1715
49	WEDW	BRIDGEPORT CT	67.8	CP	BPEDT -20080207AAV
49	WEDW	BRIDGEPORT CT	67.8	PLN	DTVPLN -DTVP1732
49	WLNE-TV	NEW BEDFORD MA	224.9	LIC	BLCDDT -20040930BBS
49	WLNE-TV	NEW BEDFORD MA	224.9	PLN	DTVPLN -DTVP1742
49	WEKW-TV	KEENE NH	215.4	LIC	BLEDT -20030618ABK
49	WEKW-TV	KEENE NH	215.4	PLN	DTVPLN -DTVP1746
49	WWSI	ATLANTIC CITY NJ	209.2	LIC	BLCDDT -20020812ABS
49	WWSI	ATLANTIC CITY NJ	209.2	PLN	DTVPLN -DTVP1747
49	WNEP-TV	SCRANTON PA	163.8	PLN	DTVPLN -DTVP1750
49	WNEP-TV	SCRANTON PA	164.0	APP	USERRECORD-01

Proposal causes no interference

#####

Analysis of Interference to Affected Station 5

Analysis of current record

Channel	Call	City/State	Application Ref. No.
48	WRNN-TV	KINGSTON NY	DTVPLN -DTVP1716

Stations Potentially Affecting This Station

Chan	Call	City/State	Dist(km)	Status	Application Ref. No.
47	WLNY-DT	RIVERHEAD NY	108.6	CP MOD	BMPCDT -20080415AAC
47	WLNY-DT	RIVERHEAD NY	108.6	PLN	DTVPLN -DTVP1683
48	WRC-TV	WASHINGTON DC	388.4	LIC	BLCDDT -20000216AAT
48	WRC-TV	WASHINGTON DC	388.4	PLN	DTVPLN -DTVP1701
48	WLED-TV	LITTLETON NH	365.7	LIC	BLEDT -20020529ABG
48	WLED-TV	LITTLETON NH	365.7	PLN	DTVPLN -DTVP1714
48	WYDC	CORNING NY	266.5	PLN	DTVPLN -DTVP1715
49	WEDW	BRIDGEPORT CT	67.8	CP	BPEDT -20080207AAV
49	WEDW	BRIDGEPORT CT	67.8	PLN	DTVPLN -DTVP1732
49	WLNE-TV	NEW BEDFORD MA	224.9	LIC	BLCDDT -20040930BBS
49	WLNE-TV	NEW BEDFORD MA	224.9	PLN	DTVPLN -DTVP1742
49	WEKW-TV	KEENE NH	215.4	LIC	BLEDT -20030618ABK
49	WEKW-TV	KEENE NH	215.4	PLN	DTVPLN -DTVP1746
49	WWSI	ATLANTIC CITY NJ	209.2	LIC	BLCDDT -20020812ABS
49	WWSI	ATLANTIC CITY NJ	209.2	PLN	DTVPLN -DTVP1747
49	WNEP-TV	SCRANTON PA	163.8	PLN	DTVPLN -DTVP1750
49	WNEP-TV	SCRANTON PA	164.0	APP	USERRECORD-01

Proposal causes no interference

#####

Analysis of Interference to Affected Station 6

Analysis of current record

Channel	Call	City/State	Application Ref. No.
49	WEDW	BRIDGEPORT CT	BPEDT -20080207AAV

Figure 3

Stations Potentially Affecting This Station

Chan	Call	City/State	Dist(km)	Status	Application Ref. No.
48	WRNN-TV	KINGSTON NY	67.8	LIC	BLCDDT -20040908AMF
48	WRNN-TV	KINGSTON NY	67.8	PLN	DTVPLN -DTVP1716
49	WLNE-TV	NEW BEDFORD MA	170.7	LIC	BLCDDT -20040930BBS
49	WLNE-TV	NEW BEDFORD MA	170.7	PLN	DTVPLN -DTVP1742
49	WEKW-TV	KEENE NH	206.3	LIC	BLEDT -20030618ABK
49	WEKW-TV	KEENE NH	206.3	PLN	DTVPLN -DTVP1746
49	WWSI	ATLANTIC CITY NJ	208.1	LIC	BLCDDT -20020812ABS
49	WWSI	ATLANTIC CITY NJ	208.1	PLN	DTVPLN -DTVP1747
49	WNEP-TV	SCRANTON PA	224.6	PLN	DTVPLN -DTVP1750
50	WYPX	AMSTERDAM NY	206.6	LIC	BLCDDT -20040908ABO
50	WYPX	AMSTERDAM NY	206.6	PLN	DTVPLN -DTVP1771
49	WNEP-TV	SCRANTON PA	224.7	APP	USERRECORD-01

Total scenarios = 16

Result key: 1

Scenario 1 Affected station 6

Before Analysis

Results for: 49A CT BRIDGEPORT	BPEDT	20080207AAV	CP
HAAT 222.0 m, ATV ERP 41.0 kW			
	POPULATION	AREA (sq km)	
within Noise Limited Contour	4266397	11823.2	
not affected by terrain losses	3888767	10933.8	
lost to NTSC IX	0	0.0	
lost to additional IX by ATV	119573	228.4	
lost to ATV IX only	119573	228.4	
lost to all IX	119573	228.4	

Potential Interfering Stations Included in above Scenario 1

48A NY KINGSTON	BLCDDT	20040908AMF	LIC
49A MA NEW BEDFORD	BLCDDT	20040930BBS	LIC
49A NH KEENE	BLEDDT	20030618ABK	LIC
49A NJ ATLANTIC CITY	BLCDDT	20020812ABS	LIC
49A PA SCRANTON	DTVPLN	DTVP1750	PLN

After Analysis

Results for: 49A CT BRIDGEPORT	BPEDT	20080207AAV	CP
HAAT 222.0 m, ATV ERP 41.0 kW			
	POPULATION	AREA (sq km)	
within Noise Limited Contour	4266397	11823.2	
not affected by terrain losses	3888767	10933.8	
lost to NTSC IX	0	0.0	
lost to additional IX by ATV	122988	236.4	
lost to ATV IX only	122988	236.4	
lost to all IX	122988	236.4	

Potential Interfering Stations Included in above Scenario 1

48A NY KINGSTON	BLCDDT	20040908AMF	LIC
-----------------	--------	-------------	-----

Figure 3

49A MA NEW BEDFORD	BLCDT	20040930BBS	LIC
49A NH KEENE	BLEDT	20030618ABK	LIC
49A NJ ATLANTIC CITY	BLCDT	20020812ABS	LIC
49A PA SCRANTON	USERRECORD01		APP
Percent new IX = 0.0906%			
Result key: 2			
Scenario 2 Affected station 6			
Before Analysis			
Results for: 49A CT BRIDGEPORT BPEDT 20080207AAV CP			
HAAT 222.0 m, ATV ERP 41.0 kW			
	POPULATION	AREA (sq km)	
within Noise Limited Contour	4266397	11823.2	
not affected by terrain losses	3888767	10933.8	
lost to NTSC IX	0	0.0	
lost to additional IX by ATV	119573	228.4	
lost to ATV IX only	119573	228.4	
lost to all IX	119573	228.4	
Potential Interfering Stations Included in above Scenario 2			
48A NY KINGSTON	BLCDT	20040908AMF	LIC
49A MA NEW BEDFORD	BLCDT	20040930BBS	LIC
49A NH KEENE	BLEDT	20030618ABK	LIC
49A NJ ATLANTIC CITY	DTVPLN	DTV1747	PLN
49A PA SCRANTON	DTVPLN	DTV1750	PLN
After Analysis			
Results for: 49A CT BRIDGEPORT BPEDT 20080207AAV CP			
HAAT 222.0 m, ATV ERP 41.0 kW			
	POPULATION	AREA (sq km)	
within Noise Limited Contour	4266397	11823.2	
not affected by terrain losses	3888767	10933.8	
lost to NTSC IX	0	0.0	
lost to additional IX by ATV	122988	236.4	
lost to ATV IX only	122988	236.4	
lost to all IX	122988	236.4	
Potential Interfering Stations Included in above Scenario 2			
48A NY KINGSTON	BLCDT	20040908AMF	LIC
49A MA NEW BEDFORD	BLCDT	20040930BBS	LIC
49A NH KEENE	BLEDT	20030618ABK	LIC
49A NJ ATLANTIC CITY	DTVPLN	DTV1747	PLN
49A PA SCRANTON	USERRECORD01		APP
Percent new IX = 0.0906%			
Result key: 3			
Scenario 3 Affected station 6			
Before Analysis			
Results for: 49A CT BRIDGEPORT BPEDT 20080207AAV CP			
HAAT 222.0 m, ATV ERP 41.0 kW			

Figure 3

		POPULATION	AREA (sq km)		
within Noise Limited Contour		4266397	11823.2		
not affected by terrain losses		3888767	10933.8		
lost to NTSC IX		0	0.0		
lost to additional IX by ATV		121507	232.4		
lost to ATV IX only		121507	232.4		
lost to all IX		121507	232.4		
Potential Interfering Stations Included in above Scenario					3
48A NY KINGSTON	BLCDT	20040908AMF	LIC		
49A MA NEW BEDFORD	BLCDT	20040930BBS	LIC		
49A NH KEENE	DTVPLN	DTV1746	PLN		
49A NJ ATLANTIC CITY	BLCDT	20020812ABS	LIC		
49A PA SCRANTON	DTVPLN	DTV1750	PLN		
After Analysis					
Results for: 49A CT BRIDGEPORT		BPEDT	20080207AAV		CP
HAAT	222.0 m, ATV ERP	41.0 kW			
		POPULATION	AREA (sq km)		
within Noise Limited Contour		4266397	11823.2		
not affected by terrain losses		3888767	10933.8		
lost to NTSC IX		0	0.0		
lost to additional IX by ATV		124922	240.4		
lost to ATV IX only		124922	240.4		
lost to all IX		124922	240.4		
Potential Interfering Stations Included in above Scenario					3
48A NY KINGSTON	BLCDT	20040908AMF	LIC		
49A MA NEW BEDFORD	BLCDT	20040930BBS	LIC		
49A NH KEENE	DTVPLN	DTV1746	PLN		
49A NJ ATLANTIC CITY	BLCDT	20020812ABS	LIC		
49A PA SCRANTON	USERRECORD01		APP		
Percent new IX = 0.0906%					
Result key:		4			
Scenario	4 Affected station	6			
Before Analysis					
Results for: 49A CT BRIDGEPORT		BPEDT	20080207AAV		CP
HAAT	222.0 m, ATV ERP	41.0 kW			
		POPULATION	AREA (sq km)		
within Noise Limited Contour		4266397	11823.2		
not affected by terrain losses		3888767	10933.8		
lost to NTSC IX		0	0.0		
lost to additional IX by ATV		121507	232.4		
lost to ATV IX only		121507	232.4		
lost to all IX		121507	232.4		
Potential Interfering Stations Included in above Scenario					4
48A NY KINGSTON	BLCDT	20040908AMF	LIC		
49A MA NEW BEDFORD	BLCDT	20040930BBS	LIC		
49A NH KEENE	DTVPLN	DTV1746	PLN		

Figure 3

49A NJ ATLANTIC CITY DTVPLN DTVP1747 PLN
 49A PA SCRANTON DTVPLN DTVP1750 PLN

After Analysis

Results for: 49A CT BRIDGEPORT BPEDT 20080207AAV CP
 HAAT 222.0 m, ATV ERP 41.0 kW

	POPULATION	AREA (sq km)
within Noise Limited Contour	4266397	11823.2
not affected by terrain losses	3888767	10933.8
lost to NTSC IX	0	0.0
lost to additional IX by ATV	124922	240.4
lost to ATV IX only	124922	240.4
lost to all IX	124922	240.4

Potential Interfering Stations Included in above Scenario 4

48A NY KINGSTON	BLCDDT	20040908AMF	LIC
49A MA NEW BEDFORD	BLCDDT	20040930BBS	LIC
49A NH KEENE	DTVPLN	DTVP1746	PLN
49A NJ ATLANTIC CITY	DTVPLN	DTVP1747	PLN
49A PA SCRANTON	USERRECORD01		APP

Percent new IX = 0.0906%

Result key: 5
 Scenario 5 Affected station 6
 Before Analysis

Results for: 49A CT BRIDGEPORT BPEDT 20080207AAV CP
 HAAT 222.0 m, ATV ERP 41.0 kW

	POPULATION	AREA (sq km)
within Noise Limited Contour	4266397	11823.2
not affected by terrain losses	3888767	10933.8
lost to NTSC IX	0	0.0
lost to additional IX by ATV	119573	228.4
lost to ATV IX only	119573	228.4
lost to all IX	119573	228.4

Potential Interfering Stations Included in above Scenario 5

48A NY KINGSTON	BLCDDT	20040908AMF	LIC
49A MA NEW BEDFORD	DTVPLN	DTVP1742	PLN
49A NH KEENE	BLEDT	20030618ABK	LIC
49A NJ ATLANTIC CITY	BLCDDT	20020812ABS	LIC
49A PA SCRANTON	DTVPLN	DTVP1750	PLN

After Analysis

Results for: 49A CT BRIDGEPORT BPEDT 20080207AAV CP
 HAAT 222.0 m, ATV ERP 41.0 kW

	POPULATION	AREA (sq km)
within Noise Limited Contour	4266397	11823.2
not affected by terrain losses	3888767	10933.8
lost to NTSC IX	0	0.0
lost to additional IX by ATV	122988	236.4
lost to ATV IX only	122988	236.4

Figure 3

lost to all IX 122988 236.4

Potential Interfering Stations Included in above Scenario 5

48A NY KINGSTON	BLCDDT	20040908AMF	LIC
49A MA NEW BEDFORD	DTVPLN	DTVP1742	PLN
49A NH KEENE	BLEDT	20030618ABK	LIC
49A NJ ATLANTIC CITY	BLCDDT	20020812ABS	LIC
49A PA SCRANTON	USERRECORD01		APP

Percent new IX = 0.0906%

Result key: 6
 Scenario 6 Affected station 6
 Before Analysis

Results for: 49A CT BRIDGEPORT BPEDT 20080207AAV CP
 HAAT 222.0 m, ATV ERP 41.0 kW

	POPULATION	AREA (sq km)
within Noise Limited Contour	4266397	11823.2
not affected by terrain losses	3888767	10933.8
lost to NTSC IX	0	0.0
lost to additional IX by ATV	119573	228.4
lost to ATV IX only	119573	228.4
lost to all IX	119573	228.4

Potential Interfering Stations Included in above Scenario 6

48A NY KINGSTON	BLCDDT	20040908AMF	LIC
49A MA NEW BEDFORD	DTVPLN	DTVP1742	PLN
49A NH KEENE	BLEDT	20030618ABK	LIC
49A NJ ATLANTIC CITY	DTVPLN	DTVP1747	PLN
49A PA SCRANTON	DTVPLN	DTVP1750	PLN

After Analysis

Results for: 49A CT BRIDGEPORT BPEDT 20080207AAV CP
 HAAT 222.0 m, ATV ERP 41.0 kW

	POPULATION	AREA (sq km)
within Noise Limited Contour	4266397	11823.2
not affected by terrain losses	3888767	10933.8
lost to NTSC IX	0	0.0
lost to additional IX by ATV	122988	236.4
lost to ATV IX only	122988	236.4
lost to all IX	122988	236.4

Potential Interfering Stations Included in above Scenario 6

48A NY KINGSTON	BLCDDT	20040908AMF	LIC
49A MA NEW BEDFORD	DTVPLN	DTVP1742	PLN
49A NH KEENE	BLEDT	20030618ABK	LIC
49A NJ ATLANTIC CITY	DTVPLN	DTVP1747	PLN
49A PA SCRANTON	USERRECORD01		APP

Percent new IX = 0.0906%

Result key: 7

Figure 3

Scenario 7 Affected station 6
Before Analysis

Results for: 49A CT BRIDGEPORT BPEDT 20080207AAV CP
HAAT 222.0 m, ATV ERP 41.0 kW

	POPULATION	AREA (sq km)
within Noise Limited Contour	4266397	11823.2
not affected by terrain losses	3888767	10933.8
lost to NTSC IX	0	0.0
lost to additional IX by ATV	121507	232.4
lost to ATV IX only	121507	232.4
lost to all IX	121507	232.4

Potential Interfering Stations Included in above Scenario 7

48A NY KINGSTON	BLCDT	20040908AMF	LIC
49A MA NEW BEDFORD	DTVPLN	DTVP1742	PLN
49A NH KEENE	DTVPLN	DTVP1746	PLN
49A NJ ATLANTIC CITY	BLCDT	20020812ABS	LIC
49A PA SCRANTON	DTVPLN	DTVP1750	PLN

After Analysis

Results for: 49A CT BRIDGEPORT BPEDT 20080207AAV CP
HAAT 222.0 m, ATV ERP 41.0 kW

	POPULATION	AREA (sq km)
within Noise Limited Contour	4266397	11823.2
not affected by terrain losses	3888767	10933.8
lost to NTSC IX	0	0.0
lost to additional IX by ATV	124922	240.4
lost to ATV IX only	124922	240.4
lost to all IX	124922	240.4

Potential Interfering Stations Included in above Scenario 7

48A NY KINGSTON	BLCDT	20040908AMF	LIC
49A MA NEW BEDFORD	DTVPLN	DTVP1742	PLN
49A NH KEENE	DTVPLN	DTVP1746	PLN
49A NJ ATLANTIC CITY	BLCDT	20020812ABS	LIC
49A PA SCRANTON	USERRECORD01		APP

Percent new IX = 0.0906%

Result key: 8

Scenario 8 Affected station 6
Before Analysis

Results for: 49A CT BRIDGEPORT BPEDT 20080207AAV CP
HAAT 222.0 m, ATV ERP 41.0 kW

	POPULATION	AREA (sq km)
within Noise Limited Contour	4266397	11823.2
not affected by terrain losses	3888767	10933.8
lost to NTSC IX	0	0.0
lost to additional IX by ATV	121507	232.4
lost to ATV IX only	121507	232.4
lost to all IX	121507	232.4

Figure 3

Potential Interfering Stations Included in above Scenario 8

48A NY KINGSTON	BLCDT	20040908AMF	LIC
49A MA NEW BEDFORD	DTVPLN	DTVP1742	PLN
49A NH KEENE	DTVPLN	DTVP1746	PLN
49A NJ ATLANTIC CITY	DTVPLN	DTVP1747	PLN
49A PA SCRANTON	DTVPLN	DTVP1750	PLN

After Analysis

Results for: 49A CT BRIDGEPORT BPEDT 20080207AAV CP
HAAT 222.0 m, ATV ERP 41.0 kW

	POPULATION	AREA (sq km)
within Noise Limited Contour	4266397	11823.2
not affected by terrain losses	3888767	10933.8
lost to NTSC IX	0	0.0
lost to additional IX by ATV	124922	240.4
lost to ATV IX only	124922	240.4
lost to all IX	124922	240.4

Potential Interfering Stations Included in above Scenario 8

48A NY KINGSTON	BLCDT	20040908AMF	LIC
49A MA NEW BEDFORD	DTVPLN	DTVP1742	PLN
49A NH KEENE	DTVPLN	DTVP1746	PLN
49A NJ ATLANTIC CITY	DTVPLN	DTVP1747	PLN
49A PA SCRANTON	USERRECORD01		APP

Percent new IX = 0.0906%

Result key: 9

Scenario 9 Affected station 6
Before Analysis

Results for: 49A CT BRIDGEPORT BPEDT 20080207AAV CP
HAAT 222.0 m, ATV ERP 41.0 kW

	POPULATION	AREA (sq km)
within Noise Limited Contour	4266397	11823.2
not affected by terrain losses	3888767	10933.8
lost to NTSC IX	0	0.0
lost to additional IX by ATV	119573	228.4
lost to ATV IX only	119573	228.4
lost to all IX	119573	228.4

Potential Interfering Stations Included in above Scenario 9

48A NY KINGSTON	DTVPLN	DTVP1716	PLN
49A MA NEW BEDFORD	BLCDT	20040930BBS	LIC
49A NH KEENE	BLEDT	20030618ABK	LIC
49A NJ ATLANTIC CITY	BLCDT	20020812ABS	LIC
49A PA SCRANTON	DTVPLN	DTVP1750	PLN

After Analysis

Results for: 49A CT BRIDGEPORT BPEDT 20080207AAV CP
HAAT 222.0 m, ATV ERP 41.0 kW

	POPULATION	AREA (sq km)
--	------------	--------------

Figure 3

within Noise Limited Contour	4266397	11823.2
not affected by terrain losses	3888767	10933.8
lost to NTSC IX	0	0.0
lost to additional IX by ATV	122988	236.4
lost to ATV IX only	122988	236.4
lost to all IX	122988	236.4

Potential Interfering Stations Included in above Scenario 9

48A NY KINGSTON	DTVPLN	DTVP1716	PLN
49A MA NEW BEDFORD	BLCDT	20040930BBS	LIC
49A NH KEENE	BLEDT	20030618ABK	LIC
49A NJ ATLANTIC CITY	BLCDT	20020812ABS	LIC
49A PA SCRANTON	USERRECORD01		APP

Percent new IX = 0.0906%

Result key: 10
Scenario 10 Affected station 6
Before Analysis

Results for: 49A CT BRIDGEPORT BPEDT 20080207AAV CP

HAAT 222.0 m, ATV ERP 41.0 kW	POPULATION	AREA (sq km)
within Noise Limited Contour	4266397	11823.2
not affected by terrain losses	3888767	10933.8
lost to NTSC IX	0	0.0
lost to additional IX by ATV	119573	228.4
lost to ATV IX only	119573	228.4
lost to all IX	119573	228.4

Potential Interfering Stations Included in above Scenario 10

48A NY KINGSTON	DTVPLN	DTVP1716	PLN
49A MA NEW BEDFORD	BLCDT	20040930BBS	LIC
49A NH KEENE	BLEDT	20030618ABK	LIC
49A NJ ATLANTIC CITY	DTVPLN	DTVP1747	PLN
49A PA SCRANTON	DTVPLN	DTVP1750	PLN

After Analysis

Results for: 49A CT BRIDGEPORT BPEDT 20080207AAV CP

HAAT 222.0 m, ATV ERP 41.0 kW	POPULATION	AREA (sq km)
within Noise Limited Contour	4266397	11823.2
not affected by terrain losses	3888767	10933.8
lost to NTSC IX	0	0.0
lost to additional IX by ATV	122988	236.4
lost to ATV IX only	122988	236.4
lost to all IX	122988	236.4

Potential Interfering Stations Included in above Scenario 10

48A NY KINGSTON	DTVPLN	DTVP1716	PLN
49A MA NEW BEDFORD	BLCDT	20040930BBS	LIC
49A NH KEENE	BLEDT	20030618ABK	LIC
49A NJ ATLANTIC CITY	DTVPLN	DTVP1747	PLN

Figure 3

49A PA SCRANTON	USERRECORD01	APP
-----------------	--------------	-----

Percent new IX = 0.0906%

Result key: 11
Scenario 11 Affected station 6
Before Analysis

Results for: 49A CT BRIDGEPORT BPEDT 20080207AAV CP

HAAT 222.0 m, ATV ERP 41.0 kW	POPULATION	AREA (sq km)
within Noise Limited Contour	4266397	11823.2
not affected by terrain losses	3888767	10933.8
lost to NTSC IX	0	0.0
lost to additional IX by ATV	121507	232.4
lost to ATV IX only	121507	232.4
lost to all IX	121507	232.4

Potential Interfering Stations Included in above Scenario 11

48A NY KINGSTON	DTVPLN	DTVP1716	PLN
49A MA NEW BEDFORD	BLCDT	20040930BBS	LIC
49A NH KEENE	DTVPLN	DTVP1746	PLN
49A NJ ATLANTIC CITY	BLCDT	20020812ABS	LIC
49A PA SCRANTON	DTVPLN	DTVP1750	PLN

After Analysis

Results for: 49A CT BRIDGEPORT BPEDT 20080207AAV CP

HAAT 222.0 m, ATV ERP 41.0 kW	POPULATION	AREA (sq km)
within Noise Limited Contour	4266397	11823.2
not affected by terrain losses	3888767	10933.8
lost to NTSC IX	0	0.0
lost to additional IX by ATV	124922	240.4
lost to ATV IX only	124922	240.4
lost to all IX	124922	240.4

Potential Interfering Stations Included in above Scenario 11

48A NY KINGSTON	DTVPLN	DTVP1716	PLN
49A MA NEW BEDFORD	BLCDT	20040930BBS	LIC
49A NH KEENE	DTVPLN	DTVP1746	PLN
49A NJ ATLANTIC CITY	BLCDT	20020812ABS	LIC
49A PA SCRANTON	USERRECORD01		APP

Percent new IX = 0.0906%

Result key: 12
Scenario 12 Affected station 6
Before Analysis

Results for: 49A CT BRIDGEPORT BPEDT 20080207AAV CP

HAAT 222.0 m, ATV ERP 41.0 kW	POPULATION	AREA (sq km)
within Noise Limited Contour	4266397	11823.2
not affected by terrain losses	3888767	10933.8

Figure 3

lost to NTSC IX 0 0.0
lost to additional IX by ATV 121507 232.4
lost to ATV IX only 121507 232.4
lost to all IX 121507 232.4

Potential Interfering Stations Included in above Scenario 12

48A NY KINGSTON	DTVPLN	DTVP1716	PLN
49A MA NEW BEDFORD	BLCDT	20040930BBS	LIC
49A NH KEENE	DTVPLN	DTVP1746	PLN
49A NJ ATLANTIC CITY	DTVPLN	DTVP1747	PLN
49A PA SCRANTON	DTVPLN	DTVP1750	PLN

After Analysis

Results for: 49A CT BRIDGEPORT BPEDT 20080207AAV CP
HAAT 222.0 m, ATV ERP 41.0 kW

	POPULATION	AREA (sq km)
within Noise Limited Contour	4266397	11823.2
not affected by terrain losses	3888767	10933.8
lost to NTSC IX	0	0.0
lost to additional IX by ATV	124922	240.4
lost to ATV IX only	124922	240.4
lost to all IX	124922	240.4

Potential Interfering Stations Included in above Scenario 12

48A NY KINGSTON	DTVPLN	DTVP1716	PLN
49A MA NEW BEDFORD	BLCDT	20040930BBS	LIC
49A NH KEENE	DTVPLN	DTVP1746	PLN
49A NJ ATLANTIC CITY	DTVPLN	DTVP1747	PLN
49A PA SCRANTON	USERRECORD01		APP

Percent new IX = 0.0906%

Result key: 13
Scenario 13 Affected station 6
Before Analysis

Results for: 49A CT BRIDGEPORT BPEDT 20080207AAV CP
HAAT 222.0 m, ATV ERP 41.0 kW

	POPULATION	AREA (sq km)
within Noise Limited Contour	4266397	11823.2
not affected by terrain losses	3888767	10933.8
lost to NTSC IX	0	0.0
lost to additional IX by ATV	119573	228.4
lost to ATV IX only	119573	228.4
lost to all IX	119573	228.4

Potential Interfering Stations Included in above Scenario 13

48A NY KINGSTON	DTVPLN	DTVP1716	PLN
49A MA NEW BEDFORD	DTVPLN	DTVP1742	PLN
49A NH KEENE	BLEDT	20030618ABK	LIC
49A NJ ATLANTIC CITY	BLCDT	20020812ABS	LIC
49A PA SCRANTON	DTVPLN	DTVP1750	PLN

Figure 3

After Analysis

Results for: 49A CT BRIDGEPORT BPEDT 20080207AAV CP
HAAT 222.0 m, ATV ERP 41.0 kW

	POPULATION	AREA (sq km)
within Noise Limited Contour	4266397	11823.2
not affected by terrain losses	3888767	10933.8
lost to NTSC IX	0	0.0
lost to additional IX by ATV	122988	236.4
lost to ATV IX only	122988	236.4
lost to all IX	122988	236.4

Potential Interfering Stations Included in above Scenario 13

48A NY KINGSTON	DTVPLN	DTVP1716	PLN
49A MA NEW BEDFORD	DTVPLN	DTVP1742	PLN
49A NH KEENE	BLEDT	20030618ABK	LIC
49A NJ ATLANTIC CITY	BLCDT	20020812ABS	LIC
49A PA SCRANTON	USERRECORD01		APP

Percent new IX = 0.0906%

Result key: 14
Scenario 14 Affected station 6
Before Analysis

Results for: 49A CT BRIDGEPORT BPEDT 20080207AAV CP
HAAT 222.0 m, ATV ERP 41.0 kW

	POPULATION	AREA (sq km)
within Noise Limited Contour	4266397	11823.2
not affected by terrain losses	3888767	10933.8
lost to NTSC IX	0	0.0
lost to additional IX by ATV	119573	228.4
lost to ATV IX only	119573	228.4
lost to all IX	119573	228.4

Potential Interfering Stations Included in above Scenario 14

48A NY KINGSTON	DTVPLN	DTVP1716	PLN
49A MA NEW BEDFORD	DTVPLN	DTVP1742	PLN
49A NH KEENE	BLEDT	20030618ABK	LIC
49A NJ ATLANTIC CITY	DTVPLN	DTVP1747	PLN
49A PA SCRANTON	DTVPLN	DTVP1750	PLN

After Analysis

Results for: 49A CT BRIDGEPORT BPEDT 20080207AAV CP
HAAT 222.0 m, ATV ERP 41.0 kW

	POPULATION	AREA (sq km)
within Noise Limited Contour	4266397	11823.2
not affected by terrain losses	3888767	10933.8
lost to NTSC IX	0	0.0
lost to additional IX by ATV	122988	236.4
lost to ATV IX only	122988	236.4
lost to all IX	122988	236.4

Potential Interfering Stations Included in above Scenario 14

Figure 3

48A NY KINGSTON	DTVPLN	DTVP1716	PLN
49A MA NEW BEDFORD	DTVPLN	DTVP1742	PLN
49A NH KEENE	BLEDT	20030618ABK	LIC
49A NJ ATLANTIC CITY	DTVPLN	DTVP1747	PLN
49A PA SCRANTON	USERRECORD01		APP

Percent new IX = 0.0906%

Result key: 15
Scenario 15 Affected station 6
Before Analysis

Results for: 49A CT BRIDGEPORT	BPEDT	20080207AAV	CP
HAAT 222.0 m, ATV ERP 41.0 kW			
	POPULATION	AREA (sq km)	
within Noise Limited Contour	4266397	11823.2	
not affected by terrain losses	3888767	10933.8	
lost to NTSC IX	0	0.0	
lost to additional IX by ATV	121507	232.4	
lost to ATV IX only	121507	232.4	
lost to all IX	121507	232.4	

Potential Interfering Stations Included in above Scenario 15

48A NY KINGSTON	DTVPLN	DTVP1716	PLN
49A MA NEW BEDFORD	DTVPLN	DTVP1742	PLN
49A NH KEENE	DTVPLN	DTVP1746	PLN
49A NJ ATLANTIC CITY	BLCDDT	20020812ABS	LIC
49A PA SCRANTON	DTVPLN	DTVP1750	PLN

After Analysis

Results for: 49A CT BRIDGEPORT	BPEDT	20080207AAV	CP
HAAT 222.0 m, ATV ERP 41.0 kW			
	POPULATION	AREA (sq km)	
within Noise Limited Contour	4266397	11823.2	
not affected by terrain losses	3888767	10933.8	
lost to NTSC IX	0	0.0	
lost to additional IX by ATV	124922	240.4	
lost to ATV IX only	124922	240.4	
lost to all IX	124922	240.4	

Potential Interfering Stations Included in above Scenario 15

48A NY KINGSTON	DTVPLN	DTVP1716	PLN
49A MA NEW BEDFORD	DTVPLN	DTVP1742	PLN
49A NH KEENE	DTVPLN	DTVP1746	PLN
49A NJ ATLANTIC CITY	BLCDDT	20020812ABS	LIC
49A PA SCRANTON	USERRECORD01		APP

Percent new IX = 0.0906%

Result key: 16
Scenario 16 Affected station 6
Before Analysis

Figure 3

Results for: 49A CT BRIDGEPORT	BPEDT	20080207AAV	CP
HAAT 222.0 m, ATV ERP 41.0 kW			
	POPULATION	AREA (sq km)	
within Noise Limited Contour	4266397	11823.2	
not affected by terrain losses	3888767	10933.8	
lost to NTSC IX	0	0.0	
lost to additional IX by ATV	121507	232.4	
lost to ATV IX only	121507	232.4	
lost to all IX	121507	232.4	

Potential Interfering Stations Included in above Scenario 16

48A NY KINGSTON	DTVPLN	DTVP1716	PLN
49A MA NEW BEDFORD	DTVPLN	DTVP1742	PLN
49A NH KEENE	DTVPLN	DTVP1746	PLN
49A NJ ATLANTIC CITY	DTVPLN	DTVP1747	PLN
49A PA SCRANTON	DTVPLN	DTVP1750	PLN

After Analysis

Results for: 49A CT BRIDGEPORT	BPEDT	20080207AAV	CP
HAAT 222.0 m, ATV ERP 41.0 kW			
	POPULATION	AREA (sq km)	
within Noise Limited Contour	4266397	11823.2	
not affected by terrain losses	3888767	10933.8	
lost to NTSC IX	0	0.0	
lost to additional IX by ATV	124922	240.4	
lost to ATV IX only	124922	240.4	
lost to all IX	124922	240.4	

Potential Interfering Stations Included in above Scenario 16

48A NY KINGSTON	DTVPLN	DTVP1716	PLN
49A MA NEW BEDFORD	DTVPLN	DTVP1742	PLN
49A NH KEENE	DTVPLN	DTVP1746	PLN
49A NJ ATLANTIC CITY	DTVPLN	DTVP1747	PLN
49A PA SCRANTON	USERRECORD01		APP

Percent new IX = 0.0906%

Worst case new IX 0.0906% Scenario 3

#####

Analysis of Interference to Affected Station 7

Analysis of current record			
Channel	Call	City/State	Application Ref. No.
49	WEDW	BRIDGEPORT CT	DTVPLN -DTVP1732

Stations Potentially Affecting This Station

Chan	Call	City/State	Dist(km)	Status	Application Ref. No.
48	WRNN-TV	KINGSTON NY	67.8	LIC	BLCDDT -20040908AMF
48	WRNN-TV	KINGSTON NY	67.8	PLN	DTVPLN -DTVP1716

Figure 3

49	WLNE-TV	NEW BEDFORD MA	170.8	LIC	BLCDT	-20040930BBS
49	WLNE-TV	NEW BEDFORD MA	170.8	PLN	DTVPLN	-DTVP1742
49	WEKW-TV	KEENE NH	206.3	LIC	BLEDT	-20030618ABK
49	WEKW-TV	KEENE NH	206.3	PLN	DTVPLN	-DTVP1746
49	WWSI	ATLANTIC CITY NJ	208.0	LIC	BLCDT	-20020812ABS
49	WWSI	ATLANTIC CITY NJ	208.0	PLN	DTVPLN	-DTVP1747
49	WNEP-TV	SCRANTON PA	224.6	PLN	DTVPLN	-DTVP1750
50	WYPX	AMSTERDAM NY	206.6	LIC	BLCDT	-20040908ABO
50	WYPX	AMSTERDAM NY	206.6	PLN	DTVPLN	-DTVP1771
49	WNEP-TV	SCRANTON PA	224.7	APP	USERRECORD-01	

Total scenarios = 16

Result key: 17
 Scenario 1 Affected station 7
 Before Analysis

Results for: 49A CT BRIDGEPORT				DTVPLN	DTVP1732	PLN
HAAT 222.0 m, ATV ERP 50.0 kW						
		POPULATION	AREA (sq km)			
within Noise Limited Contour		4268994	11815.7			
not affected by terrain losses		3841408	10810.0			
lost to NTSC IX		0	0.0			
lost to additional IX by ATV		94792	228.4			
lost to ATV IX only		94792	228.4			
lost to all IX		94792	228.4			

Potential Interfering Stations Included in above Scenario 1

48A NY KINGSTON	BLCDT	20040908AMF	LIC
49A MA NEW BEDFORD	BLCDT	20040930BBS	LIC
49A NH KEENE	BLEDT	20030618ABK	LIC
49A NJ ATLANTIC CITY	BLCDT	20020812ABS	LIC
49A PA SCRANTON	DTVPLN	DTVP1750	PLN

After Analysis

Results for: 49A CT BRIDGEPORT				DTVPLN	DTVP1732	PLN
HAAT 222.0 m, ATV ERP 50.0 kW						
		POPULATION	AREA (sq km)			
within Noise Limited Contour		4268994	11815.7			
not affected by terrain losses		3841408	10810.0			
lost to NTSC IX		0	0.0			
lost to additional IX by ATV		95377	236.4			
lost to ATV IX only		95377	236.4			
lost to all IX		95377	236.4			

Potential Interfering Stations Included in above Scenario 1

48A NY KINGSTON	BLCDT	20040908AMF	LIC
49A MA NEW BEDFORD	BLCDT	20040930BBS	LIC
49A NH KEENE	BLEDT	20030618ABK	LIC
49A NJ ATLANTIC CITY	BLCDT	20020812ABS	LIC
49A PA SCRANTON	USERRECORD01		APP

Percent new IX = 0.0156%

Figure 3

Result key: 18
 Scenario 2 Affected station 7
 Before Analysis

Results for: 49A CT BRIDGEPORT				DTVPLN	DTVP1732	PLN
HAAT 222.0 m, ATV ERP 50.0 kW						
		POPULATION	AREA (sq km)			
within Noise Limited Contour		4268994	11815.7			
not affected by terrain losses		3841408	10810.0			
lost to NTSC IX		0	0.0			
lost to additional IX by ATV		94792	228.4			
lost to ATV IX only		94792	228.4			
lost to all IX		94792	228.4			

Potential Interfering Stations Included in above Scenario 2

48A NY KINGSTON	BLCDT	20040908AMF	LIC
49A MA NEW BEDFORD	BLCDT	20040930BBS	LIC
49A NH KEENE	BLEDT	20030618ABK	LIC
49A NJ ATLANTIC CITY	DTVPLN	DTVP1747	PLN
49A PA SCRANTON	DTVPLN	DTVP1750	PLN

After Analysis

Results for: 49A CT BRIDGEPORT				DTVPLN	DTVP1732	PLN
HAAT 222.0 m, ATV ERP 50.0 kW						
		POPULATION	AREA (sq km)			
within Noise Limited Contour		4268994	11815.7			
not affected by terrain losses		3841408	10810.0			
lost to NTSC IX		0	0.0			
lost to additional IX by ATV		95377	236.4			
lost to ATV IX only		95377	236.4			
lost to all IX		95377	236.4			

Potential Interfering Stations Included in above Scenario 2

48A NY KINGSTON	BLCDT	20040908AMF	LIC
49A MA NEW BEDFORD	BLCDT	20040930BBS	LIC
49A NH KEENE	BLEDT	20030618ABK	LIC
49A NJ ATLANTIC CITY	DTVPLN	DTVP1747	PLN
49A PA SCRANTON	USERRECORD01		APP

Percent new IX = 0.0156%

Result key: 19
 Scenario 3 Affected station 7
 Before Analysis

Results for: 49A CT BRIDGEPORT				DTVPLN	DTVP1732	PLN
HAAT 222.0 m, ATV ERP 50.0 kW						
		POPULATION	AREA (sq km)			
within Noise Limited Contour		4268994	11815.7			
not affected by terrain losses		3841408	10810.0			
lost to NTSC IX		0	0.0			
lost to additional IX by ATV		94934	232.4			
lost to ATV IX only		94934	232.4			

Figure 3

lost to all IX	94934	232.4	
Potential Interfering Stations Included in above Scenario	3		
48A NY KINGSTON	BLCDT	20040908AMF	LIC
49A MA NEW BEDFORD	BLCDT	20040930BBS	LIC
49A NH KEENE	DTVPLN	DTVP1746	PLN
49A NJ ATLANTIC CITY	BLCDT	20020812ABS	LIC
49A PA SCRANTON	DTVPLN	DTVP1750	PLN
After Analysis			
Results for: 49A CT BRIDGEPORT	DTVPLN	DTVP1732	PLN
HAAT 222.0 m, ATV ERP 50.0 kW			
	POPULATION	AREA (sq km)	
within Noise Limited Contour	4268994	11815.7	
not affected by terrain losses	3841408	10810.0	
lost to NTSC IX	0	0.0	
lost to additional IX by ATV	95519	240.4	
lost to ATV IX only	95519	240.4	
lost to all IX	95519	240.4	
Potential Interfering Stations Included in above Scenario	3		
48A NY KINGSTON	BLCDT	20040908AMF	LIC
49A MA NEW BEDFORD	BLCDT	20040930BBS	LIC
49A NH KEENE	DTVPLN	DTVP1746	PLN
49A NJ ATLANTIC CITY	BLCDT	20020812ABS	LIC
49A PA SCRANTON	USERRECORD01	APP	
Percent new IX =	0.0156%		
Result key:	20		
Scenario	4 Affected station	7	
Before Analysis			
Results for: 49A CT BRIDGEPORT	DTVPLN	DTVP1732	PLN
HAAT 222.0 m, ATV ERP 50.0 kW			
	POPULATION	AREA (sq km)	
within Noise Limited Contour	4268994	11815.7	
not affected by terrain losses	3841408	10810.0	
lost to NTSC IX	0	0.0	
lost to additional IX by ATV	94934	232.4	
lost to ATV IX only	94934	232.4	
lost to all IX	94934	232.4	
Potential Interfering Stations Included in above Scenario	4		
48A NY KINGSTON	BLCDT	20040908AMF	LIC
49A MA NEW BEDFORD	BLCDT	20040930BBS	LIC
49A NH KEENE	DTVPLN	DTVP1746	PLN
49A NJ ATLANTIC CITY	DTVPLN	DTVP1747	PLN
49A PA SCRANTON	DTVPLN	DTVP1750	PLN
After Analysis			
Results for: 49A CT BRIDGEPORT	DTVPLN	DTVP1732	PLN

Figure 3

HAAT 222.0 m, ATV ERP 50.0 kW			
	POPULATION	AREA (sq km)	
within Noise Limited Contour	4268994	11815.7	
not affected by terrain losses	3841408	10810.0	
lost to NTSC IX	0	0.0	
lost to additional IX by ATV	95519	240.4	
lost to ATV IX only	95519	240.4	
lost to all IX	95519	240.4	
Potential Interfering Stations Included in above Scenario	4		
48A NY KINGSTON	BLCDT	20040908AMF	LIC
49A MA NEW BEDFORD	BLCDT	20040930BBS	LIC
49A NH KEENE	DTVPLN	DTVP1746	PLN
49A NJ ATLANTIC CITY	DTVPLN	DTVP1747	PLN
49A PA SCRANTON	USERRECORD01	APP	
Percent new IX =	0.0156%		
Result key:	21		
Scenario	5 Affected station	7	
Before Analysis			
Results for: 49A CT BRIDGEPORT	DTVPLN	DTVP1732	PLN
HAAT 222.0 m, ATV ERP 50.0 kW			
	POPULATION	AREA (sq km)	
within Noise Limited Contour	4268994	11815.7	
not affected by terrain losses	3841408	10810.0	
lost to NTSC IX	0	0.0	
lost to additional IX by ATV	94792	228.4	
lost to ATV IX only	94792	228.4	
lost to all IX	94792	228.4	
Potential Interfering Stations Included in above Scenario	5		
48A NY KINGSTON	BLCDT	20040908AMF	LIC
49A MA NEW BEDFORD	DTVPLN	DTVP1742	PLN
49A NH KEENE	BLCDT	20030618ABK	LIC
49A NJ ATLANTIC CITY	BLCDT	20020812ABS	LIC
49A PA SCRANTON	DTVPLN	DTVP1750	PLN
After Analysis			
Results for: 49A CT BRIDGEPORT	DTVPLN	DTVP1732	PLN
HAAT 222.0 m, ATV ERP 50.0 kW			
	POPULATION	AREA (sq km)	
within Noise Limited Contour	4268994	11815.7	
not affected by terrain losses	3841408	10810.0	
lost to NTSC IX	0	0.0	
lost to additional IX by ATV	95377	236.4	
lost to ATV IX only	95377	236.4	
lost to all IX	95377	236.4	
Potential Interfering Stations Included in above Scenario	5		
48A NY KINGSTON	BLCDT	20040908AMF	LIC
49A MA NEW BEDFORD	DTVPLN	DTVP1742	PLN

Figure 3

49A NH KEENE BLEDT 20030618ABK LIC
 49A NJ ATLANTIC CITY BLCDT 20020812ABS LIC
 49A PA SCRANTON USERRECORD01 APP

Percent new IX = 0.0156%

Result key: 22
 Scenario 6 Affected station 7
 Before Analysis

Results for: 49A CT BRIDGEPORT DTVPLN DTVP1732 PLN
 HAAT 222.0 m, ATV ERP 50.0 kW

	POPULATION	AREA (sq km)
within Noise Limited Contour	4268994	11815.7
not affected by terrain losses	3841408	10810.0
lost to NTSC IX	0	0.0
lost to additional IX by ATV	94792	228.4
lost to ATV IX only	94792	228.4
lost to all IX	94792	228.4

Potential Interfering Stations Included in above Scenario 6

48A NY KINGSTON BLCDT 20040908AMF LIC
 49A MA NEW BEDFORD DTVPLN DTVP1742 PLN
 49A NH KEENE BLEDT 20030618ABK LIC
 49A NJ ATLANTIC CITY DTVPLN DTVP1747 PLN
 49A PA SCRANTON DTVPLN DTVP1750 PLN

After Analysis

Results for: 49A CT BRIDGEPORT DTVPLN DTVP1732 PLN
 HAAT 222.0 m, ATV ERP 50.0 kW

	POPULATION	AREA (sq km)
within Noise Limited Contour	4268994	11815.7
not affected by terrain losses	3841408	10810.0
lost to NTSC IX	0	0.0
lost to additional IX by ATV	95377	236.4
lost to ATV IX only	95377	236.4
lost to all IX	95377	236.4

Potential Interfering Stations Included in above Scenario 6

48A NY KINGSTON BLCDT 20040908AMF LIC
 49A MA NEW BEDFORD DTVPLN DTVP1742 PLN
 49A NH KEENE BLEDT 20030618ABK LIC
 49A NJ ATLANTIC CITY DTVPLN DTVP1747 PLN
 49A PA SCRANTON USERRECORD01 APP

Percent new IX = 0.0156%

Result key: 23
 Scenario 7 Affected station 7
 Before Analysis

Results for: 49A CT BRIDGEPORT DTVPLN DTVP1732 PLN
 HAAT 222.0 m, ATV ERP 50.0 kW

	POPULATION	AREA (sq km)
--	------------	--------------

Figure 3

within Noise Limited Contour 4268994 11815.7
 not affected by terrain losses 3841408 10810.0
 lost to NTSC IX 0 0.0
 lost to additional IX by ATV 94934 232.4
 lost to ATV IX only 94934 232.4
 lost to all IX 94934 232.4

Potential Interfering Stations Included in above Scenario 7

48A NY KINGSTON BLCDT 20040908AMF LIC
 49A MA NEW BEDFORD DTVPLN DTVP1742 PLN
 49A NH KEENE DTVPLN DTVP1746 PLN
 49A NJ ATLANTIC CITY BLCDT 20020812ABS LIC
 49A PA SCRANTON DTVPLN DTVP1750 PLN

After Analysis

Results for: 49A CT BRIDGEPORT DTVPLN DTVP1732 PLN
 HAAT 222.0 m, ATV ERP 50.0 kW

	POPULATION	AREA (sq km)
within Noise Limited Contour	4268994	11815.7
not affected by terrain losses	3841408	10810.0
lost to NTSC IX	0	0.0
lost to additional IX by ATV	95519	240.4
lost to ATV IX only	95519	240.4
lost to all IX	95519	240.4

Potential Interfering Stations Included in above Scenario 7

48A NY KINGSTON BLCDT 20040908AMF LIC
 49A MA NEW BEDFORD DTVPLN DTVP1742 PLN
 49A NH KEENE DTVPLN DTVP1746 PLN
 49A NJ ATLANTIC CITY BLCDT 20020812ABS LIC
 49A PA SCRANTON USERRECORD01 APP

Percent new IX = 0.0156%

Result key: 24
 Scenario 8 Affected station 7
 Before Analysis

Results for: 49A CT BRIDGEPORT DTVPLN DTVP1732 PLN
 HAAT 222.0 m, ATV ERP 50.0 kW

	POPULATION	AREA (sq km)
within Noise Limited Contour	4268994	11815.7
not affected by terrain losses	3841408	10810.0
lost to NTSC IX	0	0.0
lost to additional IX by ATV	94934	232.4
lost to ATV IX only	94934	232.4
lost to all IX	94934	232.4

Potential Interfering Stations Included in above Scenario 8

48A NY KINGSTON BLCDT 20040908AMF LIC
 49A MA NEW BEDFORD DTVPLN DTVP1742 PLN
 49A NH KEENE DTVPLN DTVP1746 PLN
 49A NJ ATLANTIC CITY DTVPLN DTVP1747 PLN

Figure 3

49A PA SCRANTON	DTVPLN	DTVP1750	PLN
After Analysis			
Results for: 49A CT BRIDGEPORT	DTVPLN	DTVP1732	PLN
HAAT 222.0 m, ATV ERP 50.0 kW			
	POPULATION	AREA (sq km)	
within Noise Limited Contour	4268994	11815.7	
not affected by terrain losses	3841408	10810.0	
lost to NTSC IX	0	0.0	
lost to additional IX by ATV	95519	240.4	
lost to ATV IX only	95519	240.4	
lost to all IX	95519	240.4	
Potential Interfering Stations Included in above Scenario			8
48A NY KINGSTON	BLCDT	20040908AMF	LIC
49A MA NEW BEDFORD	DTVPLN	DTVP1742	PLN
49A NH KEENE	DTVPLN	DTVP1746	PLN
49A NJ ATLANTIC CITY	DTVPLN	DTVP1747	PLN
49A PA SCRANTON	USERRECORD01		APP
Percent new IX =	0.0156%		
Result key:	25		
Scenario	9 Affected station	7	
Before Analysis			
Results for: 49A CT BRIDGEPORT	DTVPLN	DTVP1732	PLN
HAAT 222.0 m, ATV ERP 50.0 kW			
	POPULATION	AREA (sq km)	
within Noise Limited Contour	4268994	11815.7	
not affected by terrain losses	3841408	10810.0	
lost to NTSC IX	0	0.0	
lost to additional IX by ATV	94792	228.4	
lost to ATV IX only	94792	228.4	
lost to all IX	94792	228.4	
Potential Interfering Stations Included in above Scenario			9
48A NY KINGSTON	DTVPLN	DTVP1716	PLN
49A MA NEW BEDFORD	BLCDT	20040930BBS	LIC
49A NH KEENE	BLEDT	20030618ABK	LIC
49A NJ ATLANTIC CITY	BLCDT	20020812ABS	LIC
49A PA SCRANTON	DTVPLN	DTVP1750	PLN
After Analysis			
Results for: 49A CT BRIDGEPORT	DTVPLN	DTVP1732	PLN
HAAT 222.0 m, ATV ERP 50.0 kW			
	POPULATION	AREA (sq km)	
within Noise Limited Contour	4268994	11815.7	
not affected by terrain losses	3841408	10810.0	
lost to NTSC IX	0	0.0	
lost to additional IX by ATV	95377	236.4	
lost to ATV IX only	95377	236.4	
lost to all IX	95377	236.4	

Figure 3

Potential Interfering Stations Included in above Scenario			9
48A NY KINGSTON	DTVPLN	DTVP1716	PLN
49A MA NEW BEDFORD	BLCDT	20040930BBS	LIC
49A NH KEENE	BLEDT	20030618ABK	LIC
49A NJ ATLANTIC CITY	BLCDT	20020812ABS	LIC
49A PA SCRANTON	USERRECORD01		APP
Percent new IX =	0.0156%		
Result key:	26		
Scenario	10 Affected station	7	
Before Analysis			
Results for: 49A CT BRIDGEPORT	DTVPLN	DTVP1732	PLN
HAAT 222.0 m, ATV ERP 50.0 kW			
	POPULATION	AREA (sq km)	
within Noise Limited Contour	4268994	11815.7	
not affected by terrain losses	3841408	10810.0	
lost to NTSC IX	0	0.0	
lost to additional IX by ATV	94792	228.4	
lost to ATV IX only	94792	228.4	
lost to all IX	94792	228.4	
Potential Interfering Stations Included in above Scenario			10
48A NY KINGSTON	DTVPLN	DTVP1716	PLN
49A MA NEW BEDFORD	BLCDT	20040930BBS	LIC
49A NH KEENE	BLEDT	20030618ABK	LIC
49A NJ ATLANTIC CITY	DTVPLN	DTVP1747	PLN
49A PA SCRANTON	DTVPLN	DTVP1750	PLN
After Analysis			
Results for: 49A CT BRIDGEPORT	DTVPLN	DTVP1732	PLN
HAAT 222.0 m, ATV ERP 50.0 kW			
	POPULATION	AREA (sq km)	
within Noise Limited Contour	4268994	11815.7	
not affected by terrain losses	3841408	10810.0	
lost to NTSC IX	0	0.0	
lost to additional IX by ATV	95377	236.4	
lost to ATV IX only	95377	236.4	
lost to all IX	95377	236.4	
Potential Interfering Stations Included in above Scenario			10
48A NY KINGSTON	DTVPLN	DTVP1716	PLN
49A MA NEW BEDFORD	BLCDT	20040930BBS	LIC
49A NH KEENE	BLEDT	20030618ABK	LIC
49A NJ ATLANTIC CITY	DTVPLN	DTVP1747	PLN
49A PA SCRANTON	USERRECORD01		APP
Percent new IX =	0.0156%		
Result key:	27		
Scenario	11 Affected station	7	

Figure 3

Before Analysis

Results for: 49A CT BRIDGEPORT	DTVPLN	DTVP1732	PLN
HAAT 222.0 m, ATV ERP 50.0 kW			
	POPULATION	AREA (sq km)	
within Noise Limited Contour	4268994	11815.7	
not affected by terrain losses	3841408	10810.0	
lost to NTSC IX	0	0.0	
lost to additional IX by ATV	94934	232.4	
lost to ATV IX only	94934	232.4	
lost to all IX	94934	232.4	

Potential Interfering Stations Included in above Scenario 11

48A NY KINGSTON	DTVPLN	DTVP1716	PLN
49A MA NEW BEDFORD	BLCDT	20040930BBS	LIC
49A NH KEENE	DTVPLN	DTVP1746	PLN
49A NJ ATLANTIC CITY	BLCDT	20020812ABS	LIC
49A PA SCRANTON	DTVPLN	DTVP1750	PLN

After Analysis

Results for: 49A CT BRIDGEPORT	DTVPLN	DTVP1732	PLN
HAAT 222.0 m, ATV ERP 50.0 kW			
	POPULATION	AREA (sq km)	
within Noise Limited Contour	4268994	11815.7	
not affected by terrain losses	3841408	10810.0	
lost to NTSC IX	0	0.0	
lost to additional IX by ATV	95519	240.4	
lost to ATV IX only	95519	240.4	
lost to all IX	95519	240.4	

Potential Interfering Stations Included in above Scenario 11

48A NY KINGSTON	DTVPLN	DTVP1716	PLN
49A MA NEW BEDFORD	BLCDT	20040930BBS	LIC
49A NH KEENE	DTVPLN	DTVP1746	PLN
49A NJ ATLANTIC CITY	BLCDT	20020812ABS	LIC
49A PA SCRANTON	USERRECORD01		APP

Percent new IX = 0.0156%

Result key: 28
Scenario 12 Affected station 7
Before Analysis

Results for: 49A CT BRIDGEPORT	DTVPLN	DTVP1732	PLN
HAAT 222.0 m, ATV ERP 50.0 kW			
	POPULATION	AREA (sq km)	
within Noise Limited Contour	4268994	11815.7	
not affected by terrain losses	3841408	10810.0	
lost to NTSC IX	0	0.0	
lost to additional IX by ATV	94934	232.4	
lost to ATV IX only	94934	232.4	
lost to all IX	94934	232.4	

Potential Interfering Stations Included in above Scenario 12

Figure 3

48A NY KINGSTON	DTVPLN	DTVP1716	PLN
49A MA NEW BEDFORD	BLCDT	20040930BBS	LIC
49A NH KEENE	DTVPLN	DTVP1746	PLN
49A NJ ATLANTIC CITY	DTVPLN	DTVP1747	PLN
49A PA SCRANTON	DTVPLN	DTVP1750	PLN

After Analysis

Results for: 49A CT BRIDGEPORT	DTVPLN	DTVP1732	PLN
HAAT 222.0 m, ATV ERP 50.0 kW			
	POPULATION	AREA (sq km)	
within Noise Limited Contour	4268994	11815.7	
not affected by terrain losses	3841408	10810.0	
lost to NTSC IX	0	0.0	
lost to additional IX by ATV	95519	240.4	
lost to ATV IX only	95519	240.4	
lost to all IX	95519	240.4	

Potential Interfering Stations Included in above Scenario 12

48A NY KINGSTON	DTVPLN	DTVP1716	PLN
49A MA NEW BEDFORD	BLCDT	20040930BBS	LIC
49A NH KEENE	DTVPLN	DTVP1746	PLN
49A NJ ATLANTIC CITY	DTVPLN	DTVP1747	PLN
49A PA SCRANTON	USERRECORD01		APP

Percent new IX = 0.0156%

Result key: 29
Scenario 13 Affected station 7
Before Analysis

Results for: 49A CT BRIDGEPORT	DTVPLN	DTVP1732	PLN
HAAT 222.0 m, ATV ERP 50.0 kW			
	POPULATION	AREA (sq km)	
within Noise Limited Contour	4268994	11815.7	
not affected by terrain losses	3841408	10810.0	
lost to NTSC IX	0	0.0	
lost to additional IX by ATV	94792	228.4	
lost to ATV IX only	94792	228.4	
lost to all IX	94792	228.4	

Potential Interfering Stations Included in above Scenario 13

48A NY KINGSTON	DTVPLN	DTVP1716	PLN
49A MA NEW BEDFORD	DTVPLN	DTVP1742	PLN
49A NH KEENE	BLEDT	20030618ABK	LIC
49A NJ ATLANTIC CITY	BLCDT	20020812ABS	LIC
49A PA SCRANTON	DTVPLN	DTVP1750	PLN

After Analysis

Results for: 49A CT BRIDGEPORT	DTVPLN	DTVP1732	PLN
HAAT 222.0 m, ATV ERP 50.0 kW			
	POPULATION	AREA (sq km)	
within Noise Limited Contour	4268994	11815.7	

Figure 3

not affected by terrain losses	3841408	10810.0
lost to NTSC IX	0	0.0
lost to additional IX by ATV	95377	236.4
lost to ATV IX only	95377	236.4
lost to all IX	95377	236.4

Potential Interfering Stations Included in above Scenario 13

48A NY KINGSTON	DTVPLN	DTVP1716	PLN
49A MA NEW BEDFORD	DTVPLN	DTVP1742	PLN
49A NH KEENE	BLEDT	20030618ABK	LIC
49A NJ ATLANTIC CITY	BLCDT	20020812ABS	LIC
49A PA SCRANTON	USERRECORD01		APP

Percent new IX = 0.0156%

Result key: 30
Scenario 14 Affected station 7
Before Analysis

Results for: 49A CT BRIDGEPORT	DTVPLN	DTVP1732	PLN
HAAT 222.0 m, ATV ERP 50.0 kW			
	POPULATION	AREA (sq km)	
within Noise Limited Contour	4268994	11815.7	
not affected by terrain losses	3841408	10810.0	
lost to NTSC IX	0	0.0	
lost to additional IX by ATV	94792	228.4	
lost to ATV IX only	94792	228.4	
lost to all IX	94792	228.4	

Potential Interfering Stations Included in above Scenario 14

48A NY KINGSTON	DTVPLN	DTVP1716	PLN
49A MA NEW BEDFORD	DTVPLN	DTVP1742	PLN
49A NH KEENE	BLEDT	20030618ABK	LIC
49A NJ ATLANTIC CITY	DTVPLN	DTVP1747	PLN
49A PA SCRANTON	DTVPLN	DTVP1750	PLN

After Analysis

Results for: 49A CT BRIDGEPORT	DTVPLN	DTVP1732	PLN
HAAT 222.0 m, ATV ERP 50.0 kW			
	POPULATION	AREA (sq km)	
within Noise Limited Contour	4268994	11815.7	
not affected by terrain losses	3841408	10810.0	
lost to NTSC IX	0	0.0	
lost to additional IX by ATV	95377	236.4	
lost to ATV IX only	95377	236.4	
lost to all IX	95377	236.4	

Potential Interfering Stations Included in above Scenario 14

48A NY KINGSTON	DTVPLN	DTVP1716	PLN
49A MA NEW BEDFORD	DTVPLN	DTVP1742	PLN
49A NH KEENE	BLEDT	20030618ABK	LIC
49A NJ ATLANTIC CITY	DTVPLN	DTVP1747	PLN
49A PA SCRANTON	USERRECORD01		APP

Figure 3

Percent new IX = 0.0156%

Result key: 31
Scenario 15 Affected station 7
Before Analysis

Results for: 49A CT BRIDGEPORT	DTVPLN	DTVP1732	PLN
HAAT 222.0 m, ATV ERP 50.0 kW			
	POPULATION	AREA (sq km)	
within Noise Limited Contour	4268994	11815.7	
not affected by terrain losses	3841408	10810.0	
lost to NTSC IX	0	0.0	
lost to additional IX by ATV	94934	232.4	
lost to ATV IX only	94934	232.4	
lost to all IX	94934	232.4	

Potential Interfering Stations Included in above Scenario 15

48A NY KINGSTON	DTVPLN	DTVP1716	PLN
49A MA NEW BEDFORD	DTVPLN	DTVP1742	PLN
49A NH KEENE	DTVPLN	DTVP1746	PLN
49A NJ ATLANTIC CITY	BLCDT	20020812ABS	LIC
49A PA SCRANTON	DTVPLN	DTVP1750	PLN

After Analysis

Results for: 49A CT BRIDGEPORT	DTVPLN	DTVP1732	PLN
HAAT 222.0 m, ATV ERP 50.0 kW			
	POPULATION	AREA (sq km)	
within Noise Limited Contour	4268994	11815.7	
not affected by terrain losses	3841408	10810.0	
lost to NTSC IX	0	0.0	
lost to additional IX by ATV	95519	240.4	
lost to ATV IX only	95519	240.4	
lost to all IX	95519	240.4	

Potential Interfering Stations Included in above Scenario 15

48A NY KINGSTON	DTVPLN	DTVP1716	PLN
49A MA NEW BEDFORD	DTVPLN	DTVP1742	PLN
49A NH KEENE	DTVPLN	DTVP1746	PLN
49A NJ ATLANTIC CITY	BLCDT	20020812ABS	LIC
49A PA SCRANTON	USERRECORD01		APP

Percent new IX = 0.0156%

Result key: 32
Scenario 16 Affected station 7
Before Analysis

Results for: 49A CT BRIDGEPORT	DTVPLN	DTVP1732	PLN
HAAT 222.0 m, ATV ERP 50.0 kW			
	POPULATION	AREA (sq km)	
within Noise Limited Contour	4268994	11815.7	
not affected by terrain losses	3841408	10810.0	
lost to NTSC IX	0	0.0	

Figure 3

lost to additional IX by ATV	94934	232.4
lost to ATV IX only	94934	232.4
lost to all IX	94934	232.4

Potential Interfering Stations Included in above Scenario 16

48A NY KINGSTON	DTVPLN	DTVP1716	PLN
49A MA NEW BEDFORD	DTVPLN	DTVP1742	PLN
49A NH KEENE	DTVPLN	DTVP1746	PLN
49A NJ ATLANTIC CITY	DTVPLN	DTVP1747	PLN
49A PA SCRANTON	DTVPLN	DTVP1750	PLN

After Analysis

Results for: 49A CT BRIDGEPORT	DTVPLN	DTVP1732	PLN
HAAT 222.0 m, ATV ERP 50.0 kW			
	POPULATION	AREA (sq km)	
within Noise Limited Contour	4268994	11815.7	
not affected by terrain losses	3841408	10810.0	
lost to NTSC IX	0	0.0	
lost to additional IX by ATV	95519	240.4	
lost to ATV IX only	95519	240.4	
lost to all IX	95519	240.4	

Potential Interfering Stations Included in above Scenario 16

48A NY KINGSTON	DTVPLN	DTVP1716	PLN
49A MA NEW BEDFORD	DTVPLN	DTVP1742	PLN
49A NH KEENE	DTVPLN	DTVP1746	PLN
49A NJ ATLANTIC CITY	DTVPLN	DTVP1747	PLN
49A PA SCRANTON	USERRECORD01	APP	

Percent new IX = 0.0156%

Worst case new IX 0.0156% Scenario 3

#####

Analysis of Interference to Affected Station 8

Analysis of current record

Channel	Call	City/State	Application Ref. No.
49	WLNE-TV	NEW BEDFORD MA	BLCDDT -20040930BBS

Stations Potentially Affecting This Station

Chan	Call	City/State	Dist(km)	Status	Application Ref. No.
48	WRNN-TV	KINGSTON NY	224.9	LIC	BLCDDT -20040908AMF
48	WRNN-TV	KINGSTON NY	224.9	PLN	DTVPLN -DTVP1716
49	WEDW	BRIDGEPORT CT	170.7	CP	BPEDT -20080207AAV
49	WEDW	BRIDGEPORT CT	170.8	PLN	DTVPLN -DTVP1732
49	WEKW-TV	KEENE NH	157.2	LIC	BLEDT -20030618ABK
49	WEKW-TV	KEENE NH	157.2	PLN	DTVPLN -DTVP1746
49	WWSI	ATLANTIC CITY NJ	358.1	LIC	BLCDDT -20020812ABS
49	WWSI	ATLANTIC CITY NJ	358.1	PLN	DTVPLN -DTVP1747

Figure 3

49	WNEP-TV	SCRANTON PA	388.7	PLN	DTVPLN -DTVP1750
49	WNEP-TV	SCRANTON PA	388.8	APP	USERRECORD-01

Proposed station is beyond the site to nearest cell evaluation distance

#####

Analysis of Interference to Affected Station 9

Analysis of current record

Channel	Call	City/State	Application Ref. No.
49	WLNE-TV	NEW BEDFORD MA	DTVPLN -DTVP1742

Stations Potentially Affecting This Station

Chan	Call	City/State	Dist(km)	Status	Application Ref. No.
48	WRNN-TV	KINGSTON NY	224.9	LIC	BLCDDT -20040908AMF
48	WRNN-TV	KINGSTON NY	224.9	PLN	DTVPLN -DTVP1716
49	WEDW	BRIDGEPORT CT	170.7	CP	BPEDT -20080207AAV
49	WEDW	BRIDGEPORT CT	170.8	PLN	DTVPLN -DTVP1732
49	WEKW-TV	KEENE NH	157.2	LIC	BLEDT -20030618ABK
49	WEKW-TV	KEENE NH	157.2	PLN	DTVPLN -DTVP1746
49	WWSI	ATLANTIC CITY NJ	358.1	LIC	BLCDDT -20020812ABS
49	WWSI	ATLANTIC CITY NJ	358.1	PLN	DTVPLN -DTVP1747
49	WNEP-TV	SCRANTON PA	388.7	PLN	DTVPLN -DTVP1750
49	WNEP-TV	SCRANTON PA	388.8	APP	USERRECORD-01

Proposed station is beyond the site to nearest cell evaluation distance

#####

Analysis of Interference to Affected Station 10

Analysis of current record

Channel	Call	City/State	Application Ref. No.
49	WEKW-TV	KEENE NH	BLEDT -20030618ABK

Stations Potentially Affecting This Station

Chan	Call	City/State	Dist(km)	Status	Application Ref. No.
48	WLDE-TV	LITTLETON NH	155.2	LIC	BLEDT -20020529ABG
48	WLDE-TV	LITTLETON NH	155.2	PLN	DTVPLN -DTVP1714
48	WRNN-TV	KINGSTON NY	215.4	LIC	BLCDDT -20040908AMF
48	WRNN-TV	KINGSTON NY	215.4	PLN	DTVPLN -DTVP1716
49	WEDW	BRIDGEPORT CT	206.3	CP	BPEDT -20080207AAV
49	WEDW	BRIDGEPORT CT	206.3	PLN	DTVPLN -DTVP1732
49	WLNE-TV	NEW BEDFORD MA	157.2	LIC	BLCDDT -20040930BBS
49	WLNE-TV	NEW BEDFORD MA	157.2	PLN	DTVPLN -DTVP1742
49	WWSI	ATLANTIC CITY NJ	412.8	LIC	BLCDDT -20020812ABS
49	WWSI	ATLANTIC CITY NJ	412.8	PLN	DTVPLN -DTVP1747
49	WNEP-TV	SCRANTON PA	354.4	PLN	DTVPLN -DTVP1750

Figure 3

```

50 WYPX AMSTERDAM NY 147.6 LIC BLC DT -20040908ABO
50 WYPX AMSTERDAM NY 147.6 PLN DTVPLN -DTV1771
49 WNEP-TV SCRANTON PA 354.6 APP USERRECORD-01
Proposal causes no interference

```

```
#####
```

Analysis of Interference to Affected Station 11

Analysis of current record

```

Channel Call City/State Application Ref. No.
49 WEKW-TV KEENE NH DTVPLN -DTV1746

```

Stations Potentially Affecting This Station

Chan	Call	City/State	Dist(km)	Status	Application Ref. No.
48	WLED-TV	LITTLETON NH	155.2	LIC	BLED T -20020529ABG
48	WLED-TV	LITTLETON NH	155.2	PLN	DTVPLN -DTV1714
48	WRNN-TV	KINGSTON NY	215.4	LIC	BLC DT -20040908AMF
48	WRNN-TV	KINGSTON NY	215.4	PLN	DTVPLN -DTV1716
49	WEDW	BRIDGEPORT CT	206.3	CP	BPED T -20080207AAV
49	WEDW	BRIDGEPORT CT	206.3	PLN	DTVPLN -DTV1732
49	WLNE-TV	NEW BEDFORD MA	157.2	LIC	BLC DT -20040930BBS
49	WLNE-TV	NEW BEDFORD MA	157.2	PLN	DTVPLN -DTV1742
49	WWSI	ATLANTIC CITY NJ	412.8	LIC	BLC DT -20020812ABS
49	WWSI	ATLANTIC CITY NJ	412.8	PLN	DTVPLN -DTV1747
49	WNEP-TV	SCRANTON PA	354.4	PLN	DTVPLN -DTV1750
50	WYPX	AMSTERDAM NY	147.6	LIC	BLC DT -20040908ABO
50	WYPX	AMSTERDAM NY	147.6	PLN	DTVPLN -DTV1771
49	WNEP-TV	SCRANTON PA	354.6	APP	USERRECORD-01

Total scenarios = 8

```

Result key: 33
Scenario 1 Affected station 11
Before Analysis

```

```

Results for: 49A NH KEENE DTVPLN DTVP1746 PLN
HAAT 329.0 m, ATV ERP 50.0 kW
POPULATION AREA (sq km)
within Noise Limited Contour 761016 17875.6
not affected by terrain losses 455697 13252.6
lost to NTSC IX 0 0.0
lost to additional IX by ATV 18541 705.4
lost to ATV IX only 18541 705.4
lost to all IX 18541 705.4

```

Potential Interfering Stations Included in above Scenario 1

```

49A CT BRIDGEPORT BPED T 20080207AAV CP
49A MA NEW BEDFORD BLC DT 20040930BBS LIC
50A NY AMSTERDAM BLC DT 20040908ABO LIC
49A PA SCRANTON DTVPLN DTVP1750 PLN

```

Figure 3

After Analysis

```

Results for: 49A NH KEENE DTVPLN DTVP1746 PLN
HAAT 329.0 m, ATV ERP 50.0 kW
POPULATION AREA (sq km)
within Noise Limited Contour 761016 17875.6
not affected by terrain losses 455697 13252.6
lost to NTSC IX 0 0.0
lost to additional IX by ATV 18541 705.4
lost to ATV IX only 18541 705.4
lost to all IX 18541 705.4

```

Potential Interfering Stations Included in above Scenario 1

```

49A CT BRIDGEPORT BPED T 20080207AAV CP
49A MA NEW BEDFORD BLC DT 20040930BBS LIC
50A NY AMSTERDAM BLC DT 20040908ABO LIC
49A PA SCRANTON USERRECORD01 APP

```

Percent new IX = 0.0000%

```

Result key: 34
Scenario 2 Affected station 11
Before Analysis

```

```

Results for: 49A NH KEENE DTVPLN DTVP1746 PLN
HAAT 329.0 m, ATV ERP 50.0 kW
POPULATION AREA (sq km)
within Noise Limited Contour 761016 17875.6
not affected by terrain losses 455697 13252.6
lost to NTSC IX 0 0.0
lost to additional IX by ATV 18541 705.4
lost to ATV IX only 18541 705.4
lost to all IX 18541 705.4

```

Potential Interfering Stations Included in above Scenario 2

```

49A CT BRIDGEPORT BPED T 20080207AAV CP
49A MA NEW BEDFORD BLC DT 20040930BBS LIC
50A NY AMSTERDAM DTVPLN DTVP1771 PLN
49A PA SCRANTON DTVPLN DTVP1750 PLN

```

After Analysis

```

Results for: 49A NH KEENE DTVPLN DTVP1746 PLN
HAAT 329.0 m, ATV ERP 50.0 kW
POPULATION AREA (sq km)
within Noise Limited Contour 761016 17875.6
not affected by terrain losses 455697 13252.6
lost to NTSC IX 0 0.0
lost to additional IX by ATV 18541 705.4
lost to ATV IX only 18541 705.4
lost to all IX 18541 705.4

```

Potential Interfering Stations Included in above Scenario 2

```

49A CT BRIDGEPORT BPED T 20080207AAV CP

```


Figure 3

49A MA NEW BEDFORD	BLCDT	20040930BBS	LIC
50A NY AMSTERDAM	DTVPLN	DTVP1771	PLN
49A PA SCRANTON	USERRECORD01		APP

Percent new IX = 0.0000%

Result key: 35
 Scenario 3 Affected station 11
 Before Analysis

Results for: 49A NH KEENE	DTVPLN	DTVP1746	PLN
HAAT 329.0 m, ATV ERP 50.0 kW			
	POPULATION	AREA (sq km)	
within Noise Limited Contour	761016	17875.6	
not affected by terrain losses	455697	13252.6	
lost to NTSC IX	0	0.0	
lost to additional IX by ATV	18541	705.4	
lost to ATV IX only	18541	705.4	
lost to all IX	18541	705.4	

Potential Interfering Stations Included in above Scenario 3

49A CT BRIDGEPORT	BPEDT	20080207AAV	CP
49A MA NEW BEDFORD	DTVPLN	DTVP1742	PLN
50A NY AMSTERDAM	BLCDT	20040908ABO	LIC
49A PA SCRANTON	DTVPLN	DTVP1750	PLN

After Analysis

Results for: 49A NH KEENE	DTVPLN	DTVP1746	PLN
HAAT 329.0 m, ATV ERP 50.0 kW			
	POPULATION	AREA (sq km)	
within Noise Limited Contour	761016	17875.6	
not affected by terrain losses	455697	13252.6	
lost to NTSC IX	0	0.0	
lost to additional IX by ATV	18541	705.4	
lost to ATV IX only	18541	705.4	
lost to all IX	18541	705.4	

Potential Interfering Stations Included in above Scenario 3

49A CT BRIDGEPORT	BPEDT	20080207AAV	CP
49A MA NEW BEDFORD	DTVPLN	DTVP1742	PLN
50A NY AMSTERDAM	BLCDT	20040908ABO	LIC
49A PA SCRANTON	USERRECORD01		APP

Percent new IX = 0.0000%

Result key: 36
 Scenario 4 Affected station 11
 Before Analysis

Results for: 49A NH KEENE	DTVPLN	DTVP1746	PLN
HAAT 329.0 m, ATV ERP 50.0 kW			
	POPULATION	AREA (sq km)	
within Noise Limited Contour	761016	17875.6	
not affected by terrain losses	455697	13252.6	

Figure 3

lost to NTSC IX	0	0.0
lost to additional IX by ATV	18541	705.4
lost to ATV IX only	18541	705.4
lost to all IX	18541	705.4

Potential Interfering Stations Included in above Scenario 4

49A CT BRIDGEPORT	BPEDT	20080207AAV	CP
49A MA NEW BEDFORD	DTVPLN	DTVP1742	PLN
50A NY AMSTERDAM	DTVPLN	DTVP1771	PLN
49A PA SCRANTON	DTVPLN	DTVP1750	PLN

After Analysis

Results for: 49A NH KEENE	DTVPLN	DTVP1746	PLN
HAAT 329.0 m, ATV ERP 50.0 kW			
	POPULATION	AREA (sq km)	
within Noise Limited Contour	761016	17875.6	
not affected by terrain losses	455697	13252.6	
lost to NTSC IX	0	0.0	
lost to additional IX by ATV	18541	705.4	
lost to ATV IX only	18541	705.4	
lost to all IX	18541	705.4	

Potential Interfering Stations Included in above Scenario 4

49A CT BRIDGEPORT	BPEDT	20080207AAV	CP
49A MA NEW BEDFORD	DTVPLN	DTVP1742	PLN
50A NY AMSTERDAM	DTVPLN	DTVP1771	PLN
49A PA SCRANTON	USERRECORD01		APP

Percent new IX = 0.0000%

Result key: 37
 Scenario 5 Affected station 11
 Before Analysis

Results for: 49A NH KEENE	DTVPLN	DTVP1746	PLN
HAAT 329.0 m, ATV ERP 50.0 kW			
	POPULATION	AREA (sq km)	
within Noise Limited Contour	761016	17875.6	
not affected by terrain losses	455697	13252.6	
lost to NTSC IX	0	0.0	
lost to additional IX by ATV	18662	709.4	
lost to ATV IX only	18662	709.4	
lost to all IX	18662	709.4	

Potential Interfering Stations Included in above Scenario 5

49A CT BRIDGEPORT	DTVPLN	DTVP1732	PLN
49A MA NEW BEDFORD	BLCDT	20040930BBS	LIC
50A NY AMSTERDAM	BLCDT	20040908ABO	LIC
49A PA SCRANTON	DTVPLN	DTVP1750	PLN

After Analysis

Results for: 49A NH KEENE	DTVPLN	DTVP1746	PLN
---------------------------	--------	----------	-----

Figure 3

HAAT 329.0 m, ATV ERP 50.0 kW

	POPULATION	AREA (sq km)
within Noise Limited Contour	761016	17875.6
not affected by terrain losses	455697	13252.6
lost to NTSC IX	0	0.0
lost to additional IX by ATV	18662	709.4
lost to ATV IX only	18662	709.4
lost to all IX	18662	709.4

Potential Interfering Stations Included in above Scenario 5

49A CT BRIDGEPORT	DTVPLN	DTVP1732	PLN
49A MA NEW BEDFORD	BLCDT	20040930BBS	LIC
50A NY AMSTERDAM	BLCDT	20040908ABO	LIC
49A PA SCRANTON	USERRECORD01		APP

Percent new IX = 0.0000%

Result key: 38

Scenario 6 Affected station 11

Before Analysis

Results for: 49A NH KEENE DTVPLN DTVP1746 PLN

HAAT 329.0 m, ATV ERP 50.0 kW

	POPULATION	AREA (sq km)
within Noise Limited Contour	761016	17875.6
not affected by terrain losses	455697	13252.6
lost to NTSC IX	0	0.0
lost to additional IX by ATV	18662	709.4
lost to ATV IX only	18662	709.4
lost to all IX	18662	709.4

Potential Interfering Stations Included in above Scenario 6

49A CT BRIDGEPORT	DTVPLN	DTVP1732	PLN
49A MA NEW BEDFORD	BLCDT	20040930BBS	LIC
50A NY AMSTERDAM	DTVPLN	DTVP1771	PLN
49A PA SCRANTON	DTVPLN	DTVP1750	PLN

After Analysis

Results for: 49A NH KEENE DTVPLN DTVP1746 PLN

HAAT 329.0 m, ATV ERP 50.0 kW

	POPULATION	AREA (sq km)
within Noise Limited Contour	761016	17875.6
not affected by terrain losses	455697	13252.6
lost to NTSC IX	0	0.0
lost to additional IX by ATV	18662	709.4
lost to ATV IX only	18662	709.4
lost to all IX	18662	709.4

Potential Interfering Stations Included in above Scenario 6

49A CT BRIDGEPORT	DTVPLN	DTVP1732	PLN
49A MA NEW BEDFORD	BLCDT	20040930BBS	LIC
50A NY AMSTERDAM	DTVPLN	DTVP1771	PLN
49A PA SCRANTON	USERRECORD01		APP

Figure 3

Percent new IX = 0.0000%

Result key: 39

Scenario 7 Affected station 11

Before Analysis

Results for: 49A NH KEENE DTVPLN DTVP1746 PLN

HAAT 329.0 m, ATV ERP 50.0 kW

	POPULATION	AREA (sq km)
within Noise Limited Contour	761016	17875.6
not affected by terrain losses	455697	13252.6
lost to NTSC IX	0	0.0
lost to additional IX by ATV	18662	709.4
lost to ATV IX only	18662	709.4
lost to all IX	18662	709.4

Potential Interfering Stations Included in above Scenario 7

49A CT BRIDGEPORT	DTVPLN	DTVP1732	PLN
49A MA NEW BEDFORD	DTVPLN	DTVP1742	PLN
50A NY AMSTERDAM	BLCDT	20040908ABO	LIC
49A PA SCRANTON	DTVPLN	DTVP1750	PLN

After Analysis

Results for: 49A NH KEENE DTVPLN DTVP1746 PLN

HAAT 329.0 m, ATV ERP 50.0 kW

	POPULATION	AREA (sq km)
within Noise Limited Contour	761016	17875.6
not affected by terrain losses	455697	13252.6
lost to NTSC IX	0	0.0
lost to additional IX by ATV	18662	709.4
lost to ATV IX only	18662	709.4
lost to all IX	18662	709.4

Potential Interfering Stations Included in above Scenario 7

49A CT BRIDGEPORT	DTVPLN	DTVP1732	PLN
49A MA NEW BEDFORD	DTVPLN	DTVP1742	PLN
50A NY AMSTERDAM	BLCDT	20040908ABO	LIC
49A PA SCRANTON	USERRECORD01		APP

Percent new IX = 0.0000%

Result key: 40

Scenario 8 Affected station 11

Before Analysis

Results for: 49A NH KEENE DTVPLN DTVP1746 PLN

HAAT 329.0 m, ATV ERP 50.0 kW

	POPULATION	AREA (sq km)
within Noise Limited Contour	761016	17875.6
not affected by terrain losses	455697	13252.6
lost to NTSC IX	0	0.0
lost to additional IX by ATV	18662	709.4
lost to ATV IX only	18662	709.4

Figure 3

```

lost to all IX                18662        709.4

Potential Interfering Stations Included in above Scenario      8

49A CT BRIDGEPORT          DTVPLN    DTVP1732    PLN
49A MA NEW BEDFORD         DTVPLN    DTVP1742    PLN
50A NY AMSTERDAM           DTVPLN    DTVP1771    PLN
49A PA SCRANTON            DTVPLN    DTVP1750    PLN

After Analysis

Results for: 49A NH KEENE          DTVPLN    DTVP1746    PLN
HAAT  329.0 m, ATV ERP   50.0 kW
      POPULATION    AREA (sq km)
within Noise Limited Contour    761016    17875.6
not affected by terrain losses  455697    13252.6
lost to NTSC IX                  0         0.0
lost to additional IX by ATV     18662     709.4
lost to ATV IX only             18662     709.4
lost to all IX                  18662     709.4

Potential Interfering Stations Included in above Scenario      8

49A CT BRIDGEPORT          DTVPLN    DTVP1732    PLN
49A MA NEW BEDFORD         DTVPLN    DTVP1742    PLN
50A NY AMSTERDAM           DTVPLN    DTVP1771    PLN
49A PA SCRANTON            USERRECORD01    APP

Percent new IX =      0.0000%

Worst case new IX    0.0000% Scenario      1

#####

Analysis of Interference to Affected Station  12

Analysis of current record
Channel    Call      City/State      Application Ref. No.
  49      WWSI      ATLANTIC CITY NJ      BLCDDT      -20020812ABS

Stations Potentially Affecting This Station

Chan  Call      City/State      Dist(km) Status  Application Ref. No.
  48  WRNN-TV  KINGSTON NY      209.2  LIC    BLCDDT      -20040908AMF
  48  WRNN-TV  KINGSTON NY      209.2  PLN    DTVPLN      -DTV1716
  49  WEDW     BRIDGEPORT CT    208.1  CP     BPEDT       -20080207AAV
  49  WEDW     BRIDGEPORT CT    208.0  PLN    DTVPLN      -DTV1732
  49  WLNE-TV  NEW BEDFORD MA    358.1  LIC    BLCDDT      -20040930BBS
  49  WLNE-TV  NEW BEDFORD MA    358.1  PLN    DTVPLN      -DTV1742
  49  WEKW-TV  KEENE NH         412.8  LIC    BLEDT       -20030618ABK
  49  WEKW-TV  KEENE NH         412.8  PLN    DTVPLN      -DTV1746
  49  WNEP-TV  SCRANTON PA       215.0  PLN    DTVPLN      -DTV1750
  49  WHSV-TV  HARRISONBURG VA   386.3  LIC    BLCDDT      -20060413ACO
  49  WHSV-TV  HARRISONBURG VA   386.3  PLN    DTVPLN      -DTV1755
  49  WNEP-TV  SCRANTON PA       215.0  APP    USERRECORD-01

```

Figure 3

```

Total scenarios =      1

Result key:      41
Scenario         1  Affected station      12
Before Analysis

Results for: 49A NJ ATLANTIC CITY          BLCDDT      20020812ABS  LIC
HAAT  296.0 m, ATV ERP  130.0 kW
      POPULATION    AREA (sq km)
within Noise Limited Contour    1912027    15528.4
not affected by terrain losses  1912027    15528.4
lost to NTSC IX                  0         0.0
lost to additional IX by ATV     3577     12.0
lost to ATV IX only             3577     12.0
lost to all IX                  3577     12.0

Potential Interfering Stations Included in above Scenario      1

49A PA SCRANTON            DTVPLN    DTVP1750    PLN

After Analysis

Results for: 49A NJ ATLANTIC CITY          BLCDDT      20020812ABS  LIC
HAAT  296.0 m, ATV ERP  130.0 kW
      POPULATION    AREA (sq km)
within Noise Limited Contour    1912027    15528.4
not affected by terrain losses  1912027    15528.4
lost to NTSC IX                  0         0.0
lost to additional IX by ATV     4597     24.1
lost to ATV IX only             4597     24.1
lost to all IX                  4597     24.1

Potential Interfering Stations Included in above Scenario      1

49A PA SCRANTON            USERRECORD01    APP

Percent new IX =      0.0534%

Worst case new IX    0.0534% Scenario      1

#####

Analysis of Interference to Affected Station  13

Analysis of current record
Channel    Call      City/State      Application Ref. No.
  49      WWSI      ATLANTIC CITY NJ      DTVPLN      -DTV1747

Stations Potentially Affecting This Station

Chan  Call      City/State      Dist(km) Status  Application Ref. No.
  48  WRNN-TV  KINGSTON NY      209.2  LIC    BLCDDT      -20040908AMF
  48  WRNN-TV  KINGSTON NY      209.2  PLN    DTVPLN      -DTV1716

```

Figure 3

49	WEDW	BRIDGEPORT CT	208.1	CP	BPEDT	-20080207AAV
49	WEDW	BRIDGEPORT CT	208.0	PLN	DTVPLN	-DTV1732
49	WLNE-TV	NEW BEDFORD MA	358.1	LIC	BLCDT	-20040930BBS
49	WLNE-TV	NEW BEDFORD MA	358.1	PLN	DTVPLN	-DTV1742
49	WEKW-TV	KEENE NH	412.8	LIC	BLEDT	-20030618ABK
49	WEKW-TV	KEENE NH	412.8	PLN	DTVPLN	-DTV1746
49	WNEP-TV	SCRANTON PA	215.0	PLN	DTVPLN	-DTV1750
49	WHSV-TV	HARRISONBURG VA	386.3	LIC	BLCDT	-20060413ACO
49	WHSV-TV	HARRISONBURG VA	386.3	PLN	DTVPLN	-DTV1755
49	WNEP-TV	SCRANTON PA	215.0	APP	USERRECORD-01	

Total scenarios = 1

Result key: 42
 Scenario 1 Affected station 13
 Before Analysis

Results for: 49A NJ ATLANTIC CITY	DTVPLN	DTV1747	PLN
HAAT 296.0 m, ATV ERP 130.0 kW			
	POPULATION	AREA (sq km)	
within Noise Limited Contour	1912027	15528.4	
not affected by terrain losses	1912027	15528.4	
lost to NTSC IX	0	0.0	
lost to additional IX by ATV	3577	12.0	
lost to ATV IX only	3577	12.0	
lost to all IX	3577	12.0	

Potential Interfering Stations Included in above Scenario 1

49A PA SCRANTON DTVPLN DTV1750 PLN

After Analysis

Results for: 49A NJ ATLANTIC CITY	DTVPLN	DTV1747	PLN
HAAT 296.0 m, ATV ERP 130.0 kW			
	POPULATION	AREA (sq km)	
within Noise Limited Contour	1912027	15528.4	
not affected by terrain losses	1912027	15528.4	
lost to NTSC IX	0	0.0	
lost to additional IX by ATV	4597	24.1	
lost to ATV IX only	4597	24.1	
lost to all IX	4597	24.1	

Potential Interfering Stations Included in above Scenario 1

49A PA SCRANTON USERRECORD01 APP

Percent new IX = 0.0534%

Worst case new IX 0.0534% Scenario 1

#####

Analysis of Interference to Affected Station 14

Figure 3

Analysis of current record			
Channel	Call	City/State	Application Ref. No.
49	WFNY-CA	GLOVERSVILLE NY	BLTTL -19970811JF

Stations Potentially Affecting This Station

Chan	Call	City/State	Dist(km)	Status	Application Ref. No.
41	WPBS-TV	WATERTOWN NY	138.2	LIC	BLEDT -20050923AGH
41	WPBS-TV	WATERTOWN NY	138.2	PLN	DTVPLN -DTV1479
47	WTVH	SYRACUSE NY	142.2	LIC	BLCDT -20060809ACB
47	WTVH	SYRACUSE NY	142.2	PLN	DTVPLN -DTV1684
49	WEDW	BRIDGEPORT CT	225.0	CP	BPEDT -20080207AAV
49	WEDW	BRIDGEPORT CT	225.0	PLN	DTVPLN -DTV1732
49	WEDW	BRIDGEPORT CT	225.0	LIC	BLET -19870908KE
49	WEDW	BRIDGEPORT CT	225.0	APP	BSTA -20071220AAD
49	WLNE-TV	NEW BEDFORD MA	287.8	LIC	BLCDT -20040930BBS
49	WLNE-TV	NEW BEDFORD MA	287.8	PLN	DTVPLN -DTV1742
49	WEKW-TV	KEENE NH	162.9	LIC	BLEDT -20030618ABK
49	WEKW-TV	KEENE NH	162.9	PLN	DTVPLN -DTV1746
49	WLED-TV	LITTLETON NH	253.1	LIC	BMLET -20030725ACD
49	WWSI	ATLANTIC CITY NJ	385.8	LIC	BLCDT -20020812ABS
49	WWSI	ATLANTIC CITY NJ	385.8	PLN	DTVPLN -DTV1747
49	WNYO-TV	BUFFALO NY	334.4	LIC	BLCT -19870911KH
49	WNEP-TV	SCRANTON PA	246.5	LIC	BLCDT -20020807AAF
49	WNEP-TV	SCRANTON PA	246.5	PLN	DTVPLN -DTV1750
50	WYPX	AMSTERDAM NY	20.2	LIC	BLCDT -20040908ABO
50	WYPX	AMSTERDAM NY	20.2	PLN	DTVPLN -DTV1771
49	WNEP-TV	SCRANTON PA	246.6	APP	USERRECORD-01

Proposal causes no interference

#####

Analysis of Interference to Affected Station 15

Analysis of current record			
Channel	Call	City/State	Application Ref. No.
49	WNDR-LP	SYRACUSE NY	BLTTA -20070724AEG

Stations Potentially Affecting This Station

Chan	Call	City/State	Dist(km)	Status	Application Ref. No.
41	WPBS-TV	WATERTOWN NY	100.7	LIC	BLEDT -20050923AGH
41	WPBS-TV	WATERTOWN NY	100.6	PLN	DTVPLN -DTV1479
42	WSKG-TV	BINGHAMTON NY	106.0	LIC	BLEDT -20050526ACA
42	WSKG-TV	BINGHAMTON NY	106.0	PLN	DTVPLN -DTV1511
45	WROC-TV	ROCHESTER NY	118.9	LIC	BLCDT -20060418AAA
45	WROC-TV	ROCHESTER NY	118.9	PLN	DTVPLN -DTV1625
47	WTVH	SYRACUSE NY	5.8	LIC	BLCDT -20060809ACB
47	WTVH	SYRACUSE NY	5.8	PLN	DTVPLN -DTV1684
48	WYDC	CORNING NY	119.6	PLN	DTVPLN -DTV1715
48	WYDC	CORNING NY	123.4	CP	BPCT -20010123ABG
49	WEDW	BRIDGEPORT CT	309.3	CP	BPEDT -20080207AAV
49	WEDW	BRIDGEPORT CT	309.4	PLN	DTVPLN -DTV1732
49	WEDW	BRIDGEPORT CT	309.4	LIC	BLET -19870908KE

Figure 3

49	WEDW	BRIDGEPORT CT	309.4	APP	BSTA	-20071220AAD
49	WEKW-TV	KEENE NH	305.7	LIC	BLEDT	-20030618ABK
49	WEKW-TV	KEENE NH	305.7	PLN	DTVPLN	-DTVP1746
49	WLED-TV	LITTLETON NH	383.5	LIC	BMLET	-20030725ACD
49	WNYO-TV	BUFFALO NY	191.2	LIC	BLCT	-19870911KH
49	WGCB-TV	RED LION PA	346.7	LIC	BLCT	-19790419KG
49	WNEP-TV	SCRANTON PA	203.6	LIC	BLCDDT	-20020807AAF
49	WNEP-TV	SCRANTON PA	203.6	PLN	DTVPLN	-DTVP1750
50	WWTI	WATERTOWN NY	102.7	LIC	BMLCT	-20050829ABX
49	WNEP-TV	SCRANTON PA	203.7	APP	USERRECORD-01	

Proposal causes no interference

#####

Analysis of Interference to Affected Station 16

Channel	Call	City/State	Application Ref. No.
49	WLLS-LP	INDIANA PA	BLTTL -19961230JA

Stations Potentially Affecting This Station

Chan	Call	City/State	Dist(km)	Status	Application Ref. No.
41	WKBN-TV	YOUNGSTOWN OH	129.5	CP	BPCDDT -19991025ACU
41	WKBN-TV	YOUNGSTOWN OH	129.5	PLN	DTVPLN -DTVP1481
42	WPMY	PITTSBURGH PA	68.4	LIC	BLCDDT -20060608AAB
42	WPMY	PITTSBURGH PA	68.4	PLN	DTVPLN -DTVP1515
46	WKBS-TV	ALTOONA PA	65.6	LIC	BLCDDT -20060629ACS
46	WKBS-TV	ALTOONA PA	65.6	PLN	DTVPLN -DTVP1656
48	WPXI	PITTSBURGH PA	69.2	LIC	BLCDDT -20050609AAQ
48	WPXI	PITTSBURGH PA	69.2	PLN	DTVPLN -DTVP1717
49	WNYO-TV	BUFFALO NY	247.7	LIC	BLCT -19870911KH
49	WEAO	AKRON OH	209.6	LIC	BMLET -20041027ABS
49	WNWO-TV	TOLEDO OH	365.4	LIC	BLCDDT -20020403AAR
49	WNWO-TV	TOLEDO OH	365.4	PLN	DTVPLN -DTVP1748
49	W49CS	ERIE PA	172.8	CP	BNPTTL -20000830BMX
49	WGCB-TV	RED LION PA	237.1	LIC	BLCT -19790419KG
49	WNEP-TV	SCRANTON PA	287.6	LIC	BLCDDT -20020807AAF
49	WNEP-TV	SCRANTON PA	287.6	PLN	DTVPLN -DTVP1750
49	WHSV-TV	HARRISONBURG VA	230.6	LIC	BLCDDT -20060413ACO
49	WHSV-TV	HARRISONBURG VA	230.6	PLN	DTVPLN -DTVP1755
49	WTAP-TV	PARKERSBURG WV	245.5	LIC	BLCDDT -20040423ABG
49	WTAP-TV	PARKERSBURG WV	245.5	PLN	DTVPLN -DTVP1757
50	WPCB-TV	GREENSBURG PA	54.6	LIC	BLCDDT -20030409ABC
50	WPCB-TV	GREENSBURG PA	54.6	PLN	DTVPLN -DTVP1776
51	WTAE-TV	PITTSBURGH PA	63.0	LIC	BLCDDT -20041014AEY
51	WTAE-TV	PITTSBURGH PA	63.0	PLN	DTVPLN -DTVP1809
64	WBOA-LP	KITTANNING PA	32.5	APP	BMPPTTL -19961120JA
64	WBOA-LP	KITTANNING PA	32.5	LIC	BLTTL -19990322JB
49	WNEP-TV	SCRANTON PA	287.5	APP	USERRECORD-01

Proposal causes no interference

#####

Figure 3

Analysis of Interference to Affected Station 17

Channel	Call	City/State	Application Ref. No.
49	WHSV-TV	HARRISONBURG VA	BLCDDT -20060413ACO

Stations Potentially Affecting This Station

Chan	Call	City/State	Dist(km)	Status	Application Ref. No.
48	WRC-TV	WASHINGTON DC	139.6	LIC	BLCDDT -20000216AAT
48	WRC-TV	WASHINGTON DC	139.6	PLN	DTVPLN -DTVP1701
49	WRAZ	RALEIGH NC	325.4	CP MOD	BMPDDT -20040329AKW
49	WRAZ	RALEIGH NC	325.4	PLN	DTVPLN -DTVP1745
49	WWSI	ATLANTIC CITY NJ	386.3	LIC	BLCDDT -20020812ABS
49	WWSI	ATLANTIC CITY NJ	386.3	PLN	DTVPLN -DTVP1747
49	WNEP-TV	SCRANTON PA	371.3	PLN	DTVPLN -DTVP1750
49	WLFG	GRUNDY VA	361.4	CP	BPCDDT -19991029AGK
49	WLFG	GRUNDY VA	361.4	PLN	DTVPLN -DTVP1754
49	WTAP-TV	PARKERSBURG WV	266.7	LIC	BLCDDT -20040423ABG
49	WTAP-TV	PARKERSBURG WV	266.7	PLN	DTVPLN -DTVP1757
50	WDCW	WASHINGTON DC	144.8	PLN	DTVPLN -DTVP1762
50	WDCW	WASHINGTON DC	144.8	APP	BPCDDT -20080229ACH
50	WPCB-TV	GREENSBURG PA	222.2	LIC	BLCDDT -20030409ABC
50	WPCB-TV	GREENSBURG PA	222.2	PLN	DTVPLN -DTVP1776
49	WNEP-TV	SCRANTON PA	371.1	APP	USERRECORD-01

Total scenarios = 16

Result key: 43
 Scenario 1 Affected station 17
 Before Analysis

Results for: 49A VA HARRISONBURG	BLCDDT	20060413ACO	LIC
HAAT 639.0 m, ATV ERP 65.0 kW			
	POPULATION	AREA (sq km)	
within Noise Limited Contour	857082	28974.9	
not affected by terrain losses	480665	16792.5	
lost to NTSC IX	0	0.0	
lost to additional IX by ATV	5725	136.7	
lost to ATV IX only	5725	136.7	
lost to all IX	5725	136.7	

Potential Interfering Stations Included in above Scenario 1

48A DC WASHINGTON	BLCDDT	20000216AAT	LIC
49A NC RALEIGH	BMPDDT	20040329AKW	CP
49A NJ ATLANTIC CITY	BLCDDT	20020812ABS	LIC
50A DC WASHINGTON	DTVPLN	DTV1762	PLN

After Analysis

Results for: 49A VA HARRISONBURG	BLCDDT	20060413ACO	LIC
HAAT 639.0 m, ATV ERP 65.0 kW			
	POPULATION	AREA (sq km)	
within Noise Limited Contour	857082	28974.9	

Figure 3

not affected by terrain losses	480665	16792.5
lost to NTSC IX	0	0.0
lost to additional IX by ATV	7387	140.7
lost to ATV IX only	7387	140.7
lost to all IX	7387	140.7

Potential Interfering Stations Included in above Scenario 1

48A DC WASHINGTON	BLCDDT	20000216AAT	LIC
49A NC RALEIGH	BMPCDDT	20040329AKW	CP
49A NJ ATLANTIC CITY	BLCDDT	20020812ABS	LIC
50A DC WASHINGTON	DTVPLN	DTVP1762	PLN
49A PA SCRANTON	USERRECORD01		APP

Percent new IX = 0.3499%

Result key: 44
Scenario 2 Affected station 17
Before Analysis

Results for: 49A VA HARRISONBURG BLCDDT 20060413ACO LIC
HAAT 639.0 m, ATV ERP 65.0 kW

	POPULATION	AREA (sq km)
within Noise Limited Contour	857082	28974.9
not affected by terrain losses	480665	16792.5
lost to NTSC IX	0	0.0
lost to additional IX by ATV	5725	136.7
lost to ATV IX only	5725	136.7
lost to all IX	5725	136.7

Potential Interfering Stations Included in above Scenario 2

48A DC WASHINGTON	BLCDDT	20000216AAT	LIC
49A NC RALEIGH	BMPCDDT	20040329AKW	CP
49A NJ ATLANTIC CITY	DTVPLN	DTVP1747	PLN
50A DC WASHINGTON	DTVPLN	DTVP1762	PLN

After Analysis

Results for: 49A VA HARRISONBURG BLCDDT 20060413ACO LIC
HAAT 639.0 m, ATV ERP 65.0 kW

	POPULATION	AREA (sq km)
within Noise Limited Contour	857082	28974.9
not affected by terrain losses	480665	16792.5
lost to NTSC IX	0	0.0
lost to additional IX by ATV	7387	140.7
lost to ATV IX only	7387	140.7
lost to all IX	7387	140.7

Potential Interfering Stations Included in above Scenario 2

48A DC WASHINGTON	BLCDDT	20000216AAT	LIC
49A NC RALEIGH	BMPCDDT	20040329AKW	CP
49A NJ ATLANTIC CITY	DTVPLN	DTVP1747	PLN
50A DC WASHINGTON	DTVPLN	DTVP1762	PLN
49A PA SCRANTON	USERRECORD01		APP

Figure 3

Percent new IX = 0.3499%

Result key: 45
Scenario 3 Affected station 17
Before Analysis

Results for: 49A VA HARRISONBURG BLCDDT 20060413ACO LIC
HAAT 639.0 m, ATV ERP 65.0 kW

	POPULATION	AREA (sq km)
within Noise Limited Contour	857082	28974.9
not affected by terrain losses	480665	16792.5
lost to NTSC IX	0	0.0
lost to additional IX by ATV	5725	136.7
lost to ATV IX only	5725	136.7
lost to all IX	5725	136.7

Potential Interfering Stations Included in above Scenario 3

48A DC WASHINGTON	BLCDDT	20000216AAT	LIC
49A NC RALEIGH	DTVPLN	DTVP1745	PLN
49A NJ ATLANTIC CITY	BLCDDT	20020812ABS	LIC
50A DC WASHINGTON	DTVPLN	DTVP1762	PLN

After Analysis

Results for: 49A VA HARRISONBURG BLCDDT 20060413ACO LIC
HAAT 639.0 m, ATV ERP 65.0 kW

	POPULATION	AREA (sq km)
within Noise Limited Contour	857082	28974.9
not affected by terrain losses	480665	16792.5
lost to NTSC IX	0	0.0
lost to additional IX by ATV	7387	140.7
lost to ATV IX only	7387	140.7
lost to all IX	7387	140.7

Potential Interfering Stations Included in above Scenario 3

48A DC WASHINGTON	BLCDDT	20000216AAT	LIC
49A NC RALEIGH	DTVPLN	DTVP1745	PLN
49A NJ ATLANTIC CITY	BLCDDT	20020812ABS	LIC
50A DC WASHINGTON	DTVPLN	DTVP1762	PLN
49A PA SCRANTON	USERRECORD01		APP

Percent new IX = 0.3499%

Result key: 46
Scenario 4 Affected station 17
Before Analysis

Results for: 49A VA HARRISONBURG BLCDDT 20060413ACO LIC
HAAT 639.0 m, ATV ERP 65.0 kW

	POPULATION	AREA (sq km)
within Noise Limited Contour	857082	28974.9
not affected by terrain losses	480665	16792.5
lost to NTSC IX	0	0.0
lost to additional IX by ATV	5725	136.7
lost to ATV IX only	5725	136.7

Figure 3

lost to all IX	5725	136.7	
Potential Interfering Stations Included in above Scenario	4		
48A DC WASHINGTON	BLCDT	20000216AAT	LIC
49A NC RALEIGH	DTVPLN	DTVP1745	PLN
49A NJ ATLANTIC CITY	DTVPLN	DTVP1747	PLN
50A DC WASHINGTON	DTVPLN	DTVP1762	PLN
After Analysis			
Results for: 49A VA HARRISONBURG	BLCDT	20060413ACO	LIC
HAAT 639.0 m, ATV ERP 65.0 kW			
	POPULATION	AREA (sq km)	
within Noise Limited Contour	857082	28974.9	
not affected by terrain losses	480665	16792.5	
lost to NTSC IX	0	0.0	
lost to additional IX by ATV	7387	140.7	
lost to ATV IX only	7387	140.7	
lost to all IX	7387	140.7	
Potential Interfering Stations Included in above Scenario	4		
48A DC WASHINGTON	BLCDT	20000216AAT	LIC
49A NC RALEIGH	DTVPLN	DTVP1745	PLN
49A NJ ATLANTIC CITY	DTVPLN	DTVP1747	PLN
50A DC WASHINGTON	DTVPLN	DTVP1762	PLN
49A PA SCRANTON	USERRECORD01		APP
Percent new IX =	0.3499%		
Result key:	47		
Scenario	5	Affected station	17
Before Analysis			
Results for: 49A VA HARRISONBURG	BLCDT	20060413ACO	LIC
HAAT 639.0 m, ATV ERP 65.0 kW			
	POPULATION	AREA (sq km)	
within Noise Limited Contour	857082	28974.9	
not affected by terrain losses	480665	16792.5	
lost to NTSC IX	0	0.0	
lost to additional IX by ATV	5725	136.7	
lost to ATV IX only	5725	136.7	
lost to all IX	5725	136.7	
Potential Interfering Stations Included in above Scenario	5		
48A DC WASHINGTON	DTVPLN	DTVP1701	PLN
49A NC RALEIGH	BMPCDT	20040329AKW	CP
49A NJ ATLANTIC CITY	BLCDT	20020812ABS	LIC
50A DC WASHINGTON	DTVPLN	DTVP1762	PLN
After Analysis			
Results for: 49A VA HARRISONBURG	BLCDT	20060413ACO	LIC
HAAT 639.0 m, ATV ERP 65.0 kW			
	POPULATION	AREA (sq km)	

Figure 3

within Noise Limited Contour	857082	28974.9	
not affected by terrain losses	480665	16792.5	
lost to NTSC IX	0	0.0	
lost to additional IX by ATV	7387	140.7	
lost to ATV IX only	7387	140.7	
lost to all IX	7387	140.7	
Potential Interfering Stations Included in above Scenario	5		
48A DC WASHINGTON	DTVPLN	DTVP1701	PLN
49A NC RALEIGH	BMPCDT	20040329AKW	CP
49A NJ ATLANTIC CITY	BLCDT	20020812ABS	LIC
50A DC WASHINGTON	DTVPLN	DTVP1762	PLN
49A PA SCRANTON	USERRECORD01		APP
Percent new IX =	0.3499%		
Result key:	48		
Scenario	6	Affected station	17
Before Analysis			
Results for: 49A VA HARRISONBURG	BLCDT	20060413ACO	LIC
HAAT 639.0 m, ATV ERP 65.0 kW			
	POPULATION	AREA (sq km)	
within Noise Limited Contour	857082	28974.9	
not affected by terrain losses	480665	16792.5	
lost to NTSC IX	0	0.0	
lost to additional IX by ATV	5725	136.7	
lost to ATV IX only	5725	136.7	
lost to all IX	5725	136.7	
Potential Interfering Stations Included in above Scenario	6		
48A DC WASHINGTON	DTVPLN	DTVP1701	PLN
49A NC RALEIGH	BMPCDT	20040329AKW	CP
49A NJ ATLANTIC CITY	DTVPLN	DTVP1747	PLN
50A DC WASHINGTON	DTVPLN	DTVP1762	PLN
After Analysis			
Results for: 49A VA HARRISONBURG	BLCDT	20060413ACO	LIC
HAAT 639.0 m, ATV ERP 65.0 kW			
	POPULATION	AREA (sq km)	
within Noise Limited Contour	857082	28974.9	
not affected by terrain losses	480665	16792.5	
lost to NTSC IX	0	0.0	
lost to additional IX by ATV	7387	140.7	
lost to ATV IX only	7387	140.7	
lost to all IX	7387	140.7	
Potential Interfering Stations Included in above Scenario	6		
48A DC WASHINGTON	DTVPLN	DTVP1701	PLN
49A NC RALEIGH	BMPCDT	20040329AKW	CP
49A NJ ATLANTIC CITY	DTVPLN	DTVP1747	PLN
50A DC WASHINGTON	DTVPLN	DTVP1762	PLN
49A PA SCRANTON	USERRECORD01		APP

Figure 3

Percent new IX = 0.3499%

Result key: 49
Scenario 7 Affected station 17
Before Analysis

Results for: 49A VA HARRISONBURG BLCDDT 20060413ACO LIC
HAAT 639.0 m, ATV ERP 65.0 kW

	POPULATION	AREA (sq km)
within Noise Limited Contour	857082	28974.9
not affected by terrain losses	480665	16792.5
lost to NTSC IX	0	0.0
lost to additional IX by ATV	5725	136.7
lost to ATV IX only	5725	136.7
lost to all IX	5725	136.7

Potential Interfering Stations Included in above Scenario 7

48A DC WASHINGTON	DTVPLN	DTVP1701	PLN
49A NC RALEIGH	DTVPLN	DTVP1745	PLN
49A NJ ATLANTIC CITY	BLCDDT	20020812ABS	LIC
50A DC WASHINGTON	DTVPLN	DTVP1762	PLN

After Analysis

Results for: 49A VA HARRISONBURG BLCDDT 20060413ACO LIC
HAAT 639.0 m, ATV ERP 65.0 kW

	POPULATION	AREA (sq km)
within Noise Limited Contour	857082	28974.9
not affected by terrain losses	480665	16792.5
lost to NTSC IX	0	0.0
lost to additional IX by ATV	7387	140.7
lost to ATV IX only	7387	140.7
lost to all IX	7387	140.7

Potential Interfering Stations Included in above Scenario 7

48A DC WASHINGTON	DTVPLN	DTVP1701	PLN
49A NC RALEIGH	DTVPLN	DTVP1745	PLN
49A NJ ATLANTIC CITY	BLCDDT	20020812ABS	LIC
50A DC WASHINGTON	DTVPLN	DTVP1762	PLN
49A PA SCRANTON	USERRECORD01		APP

Percent new IX = 0.3499%

Result key: 50
Scenario 8 Affected station 17
Before Analysis

Results for: 49A VA HARRISONBURG BLCDDT 20060413ACO LIC
HAAT 639.0 m, ATV ERP 65.0 kW

	POPULATION	AREA (sq km)
within Noise Limited Contour	857082	28974.9
not affected by terrain losses	480665	16792.5
lost to NTSC IX	0	0.0
lost to additional IX by ATV	5725	136.7

Figure 3

lost to ATV IX only	5725	136.7
lost to all IX	5725	136.7

Potential Interfering Stations Included in above Scenario 8

48A DC WASHINGTON	DTVPLN	DTVP1701	PLN
49A NC RALEIGH	DTVPLN	DTVP1745	PLN
49A NJ ATLANTIC CITY	DTVPLN	DTVP1747	PLN
50A DC WASHINGTON	DTVPLN	DTVP1762	PLN

After Analysis

Results for: 49A VA HARRISONBURG BLCDDT 20060413ACO LIC
HAAT 639.0 m, ATV ERP 65.0 kW

	POPULATION	AREA (sq km)
within Noise Limited Contour	857082	28974.9
not affected by terrain losses	480665	16792.5
lost to NTSC IX	0	0.0
lost to additional IX by ATV	7387	140.7
lost to ATV IX only	7387	140.7
lost to all IX	7387	140.7

Potential Interfering Stations Included in above Scenario 8

48A DC WASHINGTON	DTVPLN	DTVP1701	PLN
49A NC RALEIGH	DTVPLN	DTVP1745	PLN
49A NJ ATLANTIC CITY	DTVPLN	DTVP1747	PLN
50A DC WASHINGTON	DTVPLN	DTVP1762	PLN
49A PA SCRANTON	USERRECORD01		APP

Percent new IX = 0.3499%

Result key: 51
Scenario 9 Affected station 17
Before Analysis

Results for: 49A VA HARRISONBURG BLCDDT 20060413ACO LIC
HAAT 639.0 m, ATV ERP 65.0 kW

	POPULATION	AREA (sq km)
within Noise Limited Contour	857082	28974.9
not affected by terrain losses	480665	16792.5
lost to NTSC IX	0	0.0
lost to additional IX by ATV	5725	136.7
lost to ATV IX only	5725	136.7
lost to all IX	5725	136.7

Potential Interfering Stations Included in above Scenario 9

48A DC WASHINGTON	BLCDDT	20000216AAT	LIC
49A NC RALEIGH	BMPCDDT	20040329AKW	CP
49A NJ ATLANTIC CITY	BLCDDT	20020812ABS	LIC
50A DC WASHINGTON	BPCCDT	20080229ACH	APP

After Analysis

Results for: 49A VA HARRISONBURG BLCDDT 20060413ACO LIC
HAAT 639.0 m, ATV ERP 65.0 kW

Figure 3

	POPULATION	AREA (sq km)	
within Noise Limited Contour	857082	28974.9	
not affected by terrain losses	480665	16792.5	
lost to NTSC IX	0	0.0	
lost to additional IX by ATV	7387	140.7	
lost to ATV IX only	7387	140.7	
lost to all IX	7387	140.7	
Potential Interfering Stations Included in above Scenario	9		
48A DC WASHINGTON	BLCDDT	20000216AAT	LIC
49A NC RALEIGH	BMPCDDT	20040329AKW	CP
49A NJ ATLANTIC CITY	BLCDDT	20020812ABS	LIC
50A DC WASHINGTON	BPCDDT	20080229ACH	APP
49A PA SCRANTON	USERRECORD01		APP
Percent new IX =	0.3499%		
Result key:	52		
Scenario	10 Affected station	17	
Before Analysis			
Results for: 49A VA HARRISONBURG	BLCDDT	20060413ACO	LIC
HAAT 639.0 m, ATV ERP 65.0 kW			
	POPULATION	AREA (sq km)	
within Noise Limited Contour	857082	28974.9	
not affected by terrain losses	480665	16792.5	
lost to NTSC IX	0	0.0	
lost to additional IX by ATV	5725	136.7	
lost to ATV IX only	5725	136.7	
lost to all IX	5725	136.7	
Potential Interfering Stations Included in above Scenario	10		
48A DC WASHINGTON	BLCDDT	20000216AAT	LIC
49A NC RALEIGH	BMPCDDT	20040329AKW	CP
49A NJ ATLANTIC CITY	DTVPLN	DTVP1747	PLN
50A DC WASHINGTON	BPCDDT	20080229ACH	APP
After Analysis			
Results for: 49A VA HARRISONBURG	BLCDDT	20060413ACO	LIC
HAAT 639.0 m, ATV ERP 65.0 kW			
	POPULATION	AREA (sq km)	
within Noise Limited Contour	857082	28974.9	
not affected by terrain losses	480665	16792.5	
lost to NTSC IX	0	0.0	
lost to additional IX by ATV	7387	140.7	
lost to ATV IX only	7387	140.7	
lost to all IX	7387	140.7	
Potential Interfering Stations Included in above Scenario	10		
48A DC WASHINGTON	BLCDDT	20000216AAT	LIC
49A NC RALEIGH	BMPCDDT	20040329AKW	CP
49A NJ ATLANTIC CITY	DTVPLN	DTVP1747	PLN
50A DC WASHINGTON	BPCDDT	20080229ACH	APP

Figure 3

49A PA SCRANTON	USERRECORD01	APP
Percent new IX = 0.3499%		
Result key: 53		
Scenario 11	Affected station	17
Before Analysis		
Results for: 49A VA HARRISONBURG	BLCDDT	20060413ACO LIC
HAAT 639.0 m, ATV ERP 65.0 kW		
	POPULATION	AREA (sq km)
within Noise Limited Contour	857082	28974.9
not affected by terrain losses	480665	16792.5
lost to NTSC IX	0	0.0
lost to additional IX by ATV	5725	136.7
lost to ATV IX only	5725	136.7
lost to all IX	5725	136.7
Potential Interfering Stations Included in above Scenario 11		
48A DC WASHINGTON	BLCDDT	20000216AAT LIC
49A NC RALEIGH	DTVPLN	DTVP1745 PLN
49A NJ ATLANTIC CITY	BLCDDT	20020812ABS LIC
50A DC WASHINGTON	BPCDDT	20080229ACH APP
After Analysis		
Results for: 49A VA HARRISONBURG	BLCDDT	20060413ACO LIC
HAAT 639.0 m, ATV ERP 65.0 kW		
	POPULATION	AREA (sq km)
within Noise Limited Contour	857082	28974.9
not affected by terrain losses	480665	16792.5
lost to NTSC IX	0	0.0
lost to additional IX by ATV	7387	140.7
lost to ATV IX only	7387	140.7
lost to all IX	7387	140.7
Potential Interfering Stations Included in above Scenario 11		
48A DC WASHINGTON	BLCDDT	20000216AAT LIC
49A NC RALEIGH	DTVPLN	DTVP1745 PLN
49A NJ ATLANTIC CITY	BLCDDT	20020812ABS LIC
50A DC WASHINGTON	BPCDDT	20080229ACH APP
49A PA SCRANTON	USERRECORD01	APP
Percent new IX = 0.3499%		
Result key: 54		
Scenario 12	Affected station	17
Before Analysis		
Results for: 49A VA HARRISONBURG	BLCDDT	20060413ACO LIC
HAAT 639.0 m, ATV ERP 65.0 kW		
	POPULATION	AREA (sq km)
within Noise Limited Contour	857082	28974.9
not affected by terrain losses	480665	16792.5
lost to NTSC IX	0	0.0

Figure 3

lost to additional IX by ATV	5725	136.7
lost to ATV IX only	5725	136.7
lost to all IX	5725	136.7

Potential Interfering Stations Included in above Scenario 12

48A DC WASHINGTON	BLCDT	20000216AAT	LIC
49A NC RALEIGH	DTVPLN	DTVP1745	PLN
49A NJ ATLANTIC CITY	DTVPLN	DTVP1747	PLN
50A DC WASHINGTON	BPCDT	20080229ACH	APP

After Analysis

Results for: 49A VA HARRISONBURG BLCDT 20060413ACO LIC

HAAT 639.0 m, ATV ERP 65.0 kW		
	POPULATION	AREA (sq km)
within Noise Limited Contour	857082	28974.9
not affected by terrain losses	480665	16792.5
lost to NTSC IX	0	0.0
lost to additional IX by ATV	7387	140.7
lost to ATV IX only	7387	140.7
lost to all IX	7387	140.7

Potential Interfering Stations Included in above Scenario 12

48A DC WASHINGTON	BLCDT	20000216AAT	LIC
49A NC RALEIGH	DTVPLN	DTVP1745	PLN
49A NJ ATLANTIC CITY	DTVPLN	DTVP1747	PLN
50A DC WASHINGTON	BPCDT	20080229ACH	APP
49A PA SCRANTON	USERRECORD01		APP

Percent new IX = 0.3499%

Result key: 55

Scenario 13 Affected station 17

Before Analysis

Results for: 49A VA HARRISONBURG BLCDT 20060413ACO LIC

HAAT 639.0 m, ATV ERP 65.0 kW		
	POPULATION	AREA (sq km)
within Noise Limited Contour	857082	28974.9
not affected by terrain losses	480665	16792.5
lost to NTSC IX	0	0.0
lost to additional IX by ATV	5725	136.7
lost to ATV IX only	5725	136.7
lost to all IX	5725	136.7

Potential Interfering Stations Included in above Scenario 13

48A DC WASHINGTON	DTVPLN	DTVP1701	PLN
49A NC RALEIGH	BMPCDT	20040329AKW	CP
49A NJ ATLANTIC CITY	BLCDT	20020812ABS	LIC
50A DC WASHINGTON	BPCDT	20080229ACH	APP

After Analysis

Results for: 49A VA HARRISONBURG BLCDT 20060413ACO LIC

Figure 3

HAAT 639.0 m, ATV ERP 65.0 kW		
	POPULATION	AREA (sq km)
within Noise Limited Contour	857082	28974.9
not affected by terrain losses	480665	16792.5
lost to NTSC IX	0	0.0
lost to additional IX by ATV	7387	140.7
lost to ATV IX only	7387	140.7
lost to all IX	7387	140.7

Potential Interfering Stations Included in above Scenario 13

48A DC WASHINGTON	DTVPLN	DTVP1701	PLN
49A NC RALEIGH	BMPCDT	20040329AKW	CP
49A NJ ATLANTIC CITY	BLCDT	20020812ABS	LIC
50A DC WASHINGTON	BPCDT	20080229ACH	APP
49A PA SCRANTON	USERRECORD01		APP

Percent new IX = 0.3499%

Result key: 56

Scenario 14 Affected station 17

Before Analysis

Results for: 49A VA HARRISONBURG BLCDT 20060413ACO LIC

HAAT 639.0 m, ATV ERP 65.0 kW		
	POPULATION	AREA (sq km)
within Noise Limited Contour	857082	28974.9
not affected by terrain losses	480665	16792.5
lost to NTSC IX	0	0.0
lost to additional IX by ATV	5725	136.7
lost to ATV IX only	5725	136.7
lost to all IX	5725	136.7

Potential Interfering Stations Included in above Scenario 14

48A DC WASHINGTON	DTVPLN	DTVP1701	PLN
49A NC RALEIGH	BMPCDT	20040329AKW	CP
49A NJ ATLANTIC CITY	DTVPLN	DTVP1747	PLN
50A DC WASHINGTON	BPCDT	20080229ACH	APP

After Analysis

Results for: 49A VA HARRISONBURG BLCDT 20060413ACO LIC

HAAT 639.0 m, ATV ERP 65.0 kW		
	POPULATION	AREA (sq km)
within Noise Limited Contour	857082	28974.9
not affected by terrain losses	480665	16792.5
lost to NTSC IX	0	0.0
lost to additional IX by ATV	7387	140.7
lost to ATV IX only	7387	140.7
lost to all IX	7387	140.7

Potential Interfering Stations Included in above Scenario 14

48A DC WASHINGTON	DTVPLN	DTVP1701	PLN
49A NC RALEIGH	BMPCDT	20040329AKW	CP
49A NJ ATLANTIC CITY	DTVPLN	DTVP1747	PLN

Figure 3

50A DC WASHINGTON BPCDT 20080229ACH APP
 49A PA SCRANTON USERRECORD01 APP

Percent new IX = 0.3499%

Result key: 57
 Scenario 15 Affected station 17
 Before Analysis

Results for: 49A VA HARRISONBURG BLCDT 20060413ACO LIC
 HAAT 639.0 m, ATV ERP 65.0 kW

	POPULATION	AREA (sq km)
within Noise Limited Contour	857082	28974.9
not affected by terrain losses	480665	16792.5
lost to NTSC IX	0	0.0
lost to additional IX by ATV	5725	136.7
lost to ATV IX only	5725	136.7
lost to all IX	5725	136.7

Potential Interfering Stations Included in above Scenario 15

48A DC WASHINGTON	DTVPLN	DTVP1701	PLN
49A NC RALEIGH	DTVPLN	DTVP1745	PLN
49A NJ ATLANTIC CITY	BLCDT	20020812ABS	LIC
50A DC WASHINGTON	BPCDT	20080229ACH	APP

After Analysis

Results for: 49A VA HARRISONBURG BLCDT 20060413ACO LIC
 HAAT 639.0 m, ATV ERP 65.0 kW

	POPULATION	AREA (sq km)
within Noise Limited Contour	857082	28974.9
not affected by terrain losses	480665	16792.5
lost to NTSC IX	0	0.0
lost to additional IX by ATV	7387	140.7
lost to ATV IX only	7387	140.7
lost to all IX	7387	140.7

Potential Interfering Stations Included in above Scenario 15

48A DC WASHINGTON	DTVPLN	DTVP1701	PLN
49A NC RALEIGH	DTVPLN	DTVP1745	PLN
49A NJ ATLANTIC CITY	BLCDT	20020812ABS	LIC
50A DC WASHINGTON	BPCDT	20080229ACH	APP
49A PA SCRANTON	USERRECORD01		APP

Percent new IX = 0.3499%

Result key: 58
 Scenario 16 Affected station 17
 Before Analysis

Results for: 49A VA HARRISONBURG BLCDT 20060413ACO LIC
 HAAT 639.0 m, ATV ERP 65.0 kW

	POPULATION	AREA (sq km)
within Noise Limited Contour	857082	28974.9
not affected by terrain losses	480665	16792.5

Figure 3

lost to NTSC IX	0	0.0
lost to additional IX by ATV	5725	136.7
lost to ATV IX only	5725	136.7
lost to all IX	5725	136.7

Potential Interfering Stations Included in above Scenario 16

48A DC WASHINGTON	DTVPLN	DTVP1701	PLN
49A NC RALEIGH	DTVPLN	DTVP1745	PLN
49A NJ ATLANTIC CITY	DTVPLN	DTVP1747	PLN
50A DC WASHINGTON	BPCDT	20080229ACH	APP

After Analysis

Results for: 49A VA HARRISONBURG BLCDT 20060413ACO LIC
 HAAT 639.0 m, ATV ERP 65.0 kW

	POPULATION	AREA (sq km)
within Noise Limited Contour	857082	28974.9
not affected by terrain losses	480665	16792.5
lost to NTSC IX	0	0.0
lost to additional IX by ATV	7387	140.7
lost to ATV IX only	7387	140.7
lost to all IX	7387	140.7

Potential Interfering Stations Included in above Scenario 16

48A DC WASHINGTON	DTVPLN	DTVP1701	PLN
49A NC RALEIGH	DTVPLN	DTVP1745	PLN
49A NJ ATLANTIC CITY	DTVPLN	DTVP1747	PLN
50A DC WASHINGTON	BPCDT	20080229ACH	APP
49A PA SCRANTON	USERRECORD01		APP

Percent new IX = 0.3499%

Worst case new IX 0.3499% Scenario 1

#####

Analysis of Interference to Affected Station 18

Analysis of current record

Channel	Call	City/State	Application Ref. No.
49	WHSV-TV	HARRISONBURG VA	DTVPLN -DTVP1755

Stations Potentially Affecting This Station

Chan	Call	City/State	Dist(km)	Status	Application Ref. No.
48	WRC-TV	WASHINGTON DC	139.6	LIC	BLCDT -20000216AAT
48	WRC-TV	WASHINGTON DC	139.6	PLN	DTVPLN -DTVP1701
49	WRAZ	RALEIGH NC	325.4	CP MOD	BMPCDT -20040329AKW
49	WRAZ	RALEIGH NC	325.4	PLN	DTVPLN -DTVP1745
49	WWSI	ATLANTIC CITY NJ	386.3	LIC	BLCDT -20020812ABS
49	WWSI	ATLANTIC CITY NJ	386.3	PLN	DTVPLN -DTVP1747
49	WNEP-TV	SCRANTON PA	371.3	PLN	DTVPLN -DTVP1750
49	WLFG	GRUNDY VA	361.4	CP	BPCDT -19991029AGK

Figure 3

49	WLFQ	GRUNDY VA	361.4	PLN	DTVPLN	-DTVP1754
49	WTAP-TV	PARKERSBURG WV	266.7	LIC	BLCDDT	-20040423ABG
49	WTAP-TV	PARKERSBURG WV	266.7	PLN	DTVPLN	-DTVP1757
50	WDCW	WASHINGTON DC	144.8	PLN	DTVPLN	-DTVP1762
50	WDCW	WASHINGTON DC	144.8	APP	BPCDDT	-20080229ACH
50	WPCB-TV	GREENSBURG PA	222.2	LIC	BLCDDT	-20030409ABC
50	WPCB-TV	GREENSBURG PA	222.2	PLN	DTVPLN	-DTVP1776
49	WNEP-TV	SCRANTON PA	371.1	APP	USERRECORD-01	

Total scenarios = 16

Result key: 59
 Scenario 1 Affected station 18
 Before Analysis

Results for: 49A VA HARRISONBURG	DTVPLN	DTVP1755	PLN
HAAT 638.0 m, ATV ERP 65.0 kW			
	POPULATION	AREA (sq km)	
within Noise Limited Contour	857082	28974.9	
not affected by terrain losses	480665	16792.5	
lost to NTSC IX	0	0.0	
lost to additional IX by ATV	5725	136.7	
lost to ATV IX only	5725	136.7	
lost to all IX	5725	136.7	

Potential Interfering Stations Included in above Scenario 1

48A DC WASHINGTON	BLCDDT	20000216AAT	LIC
49A NC RALEIGH	BMPCDDT	20040329AKW	CP
49A NJ ATLANTIC CITY	BLCDDT	20020812ABS	LIC
50A DC WASHINGTON	DTVPLN	DTVP1762	PLN

After Analysis

Results for: 49A VA HARRISONBURG	DTVPLN	DTVP1755	PLN
HAAT 638.0 m, ATV ERP 65.0 kW			
	POPULATION	AREA (sq km)	
within Noise Limited Contour	857082	28974.9	
not affected by terrain losses	480665	16792.5	
lost to NTSC IX	0	0.0	
lost to additional IX by ATV	7387	140.7	
lost to ATV IX only	7387	140.7	
lost to all IX	7387	140.7	

Potential Interfering Stations Included in above Scenario 1

48A DC WASHINGTON	BLCDDT	20000216AAT	LIC
49A NC RALEIGH	BMPCDDT	20040329AKW	CP
49A NJ ATLANTIC CITY	BLCDDT	20020812ABS	LIC
50A DC WASHINGTON	DTVPLN	DTVP1762	PLN
49A PA SCRANTON	USERRECORD01		APP

Percent new IX = 0.3499%

Result key: 60
 Scenario 2 Affected station 18

Figure 3

Before Analysis

Results for: 49A VA HARRISONBURG	DTVPLN	DTVP1755	PLN
HAAT 638.0 m, ATV ERP 65.0 kW			
	POPULATION	AREA (sq km)	
within Noise Limited Contour	857082	28974.9	
not affected by terrain losses	480665	16792.5	
lost to NTSC IX	0	0.0	
lost to additional IX by ATV	5725	136.7	
lost to ATV IX only	5725	136.7	
lost to all IX	5725	136.7	

Potential Interfering Stations Included in above Scenario 2

48A DC WASHINGTON	BLCDDT	20000216AAT	LIC
49A NC RALEIGH	BMPCDDT	20040329AKW	CP
49A NJ ATLANTIC CITY	DTVPLN	DTVP1747	PLN
50A DC WASHINGTON	DTVPLN	DTVP1762	PLN

After Analysis

Results for: 49A VA HARRISONBURG	DTVPLN	DTVP1755	PLN
HAAT 638.0 m, ATV ERP 65.0 kW			
	POPULATION	AREA (sq km)	
within Noise Limited Contour	857082	28974.9	
not affected by terrain losses	480665	16792.5	
lost to NTSC IX	0	0.0	
lost to additional IX by ATV	7387	140.7	
lost to ATV IX only	7387	140.7	
lost to all IX	7387	140.7	

Potential Interfering Stations Included in above Scenario 2

48A DC WASHINGTON	BLCDDT	20000216AAT	LIC
49A NC RALEIGH	BMPCDDT	20040329AKW	CP
49A NJ ATLANTIC CITY	DTVPLN	DTVP1747	PLN
50A DC WASHINGTON	DTVPLN	DTVP1762	PLN
49A PA SCRANTON	USERRECORD01		APP

Percent new IX = 0.3499%

Result key: 61
 Scenario 3 Affected station 18
 Before Analysis

Results for: 49A VA HARRISONBURG	DTVPLN	DTVP1755	PLN
HAAT 638.0 m, ATV ERP 65.0 kW			
	POPULATION	AREA (sq km)	
within Noise Limited Contour	857082	28974.9	
not affected by terrain losses	480665	16792.5	
lost to NTSC IX	0	0.0	
lost to additional IX by ATV	5725	136.7	
lost to ATV IX only	5725	136.7	
lost to all IX	5725	136.7	

Potential Interfering Stations Included in above Scenario 3

Figure 3

48A DC WASHINGTON	BLCDDT	20000216AAT	LIC
49A NC RALEIGH	DTVPLN	DTVP1745	PLN
49A NJ ATLANTIC CITY	BLCDDT	20020812ABS	LIC
50A DC WASHINGTON	DTVPLN	DTVP1762	PLN

After Analysis

Results for: 49A VA HARRISONBURG	DTVPLN	DTVP1755	PLN
HAAT 638.0 m, ATV ERP 65.0 kW			
	POPULATION	AREA (sq km)	
within Noise Limited Contour	857082	28974.9	
not affected by terrain losses	480665	16792.5	
lost to NTSC IX	0	0.0	
lost to additional IX by ATV	7387	140.7	
lost to ATV IX only	7387	140.7	
lost to all IX	7387	140.7	

Potential Interfering Stations Included in above Scenario 3

48A DC WASHINGTON	BLCDDT	20000216AAT	LIC
49A NC RALEIGH	DTVPLN	DTVP1745	PLN
49A NJ ATLANTIC CITY	BLCDDT	20020812ABS	LIC
50A DC WASHINGTON	DTVPLN	DTVP1762	PLN
49A PA SCRANTON	USERRECORD01		APP

Percent new IX = 0.3499%

Result key: 62
 Scenario 4 Affected station 18
 Before Analysis

Results for: 49A VA HARRISONBURG	DTVPLN	DTVP1755	PLN
HAAT 638.0 m, ATV ERP 65.0 kW			
	POPULATION	AREA (sq km)	
within Noise Limited Contour	857082	28974.9	
not affected by terrain losses	480665	16792.5	
lost to NTSC IX	0	0.0	
lost to additional IX by ATV	5725	136.7	
lost to ATV IX only	5725	136.7	
lost to all IX	5725	136.7	

Potential Interfering Stations Included in above Scenario 4

48A DC WASHINGTON	BLCDDT	20000216AAT	LIC
49A NC RALEIGH	DTVPLN	DTVP1745	PLN
49A NJ ATLANTIC CITY	DTVPLN	DTVP1747	PLN
50A DC WASHINGTON	DTVPLN	DTVP1762	PLN

After Analysis

Results for: 49A VA HARRISONBURG	DTVPLN	DTVP1755	PLN
HAAT 638.0 m, ATV ERP 65.0 kW			
	POPULATION	AREA (sq km)	
within Noise Limited Contour	857082	28974.9	
not affected by terrain losses	480665	16792.5	
lost to NTSC IX	0	0.0	
lost to additional IX by ATV	7387	140.7	

Figure 3

lost to ATV IX only	7387	140.7
lost to all IX	7387	140.7

Potential Interfering Stations Included in above Scenario 4

48A DC WASHINGTON	BLCDDT	20000216AAT	LIC
49A NC RALEIGH	DTVPLN	DTVP1745	PLN
49A NJ ATLANTIC CITY	DTVPLN	DTVP1747	PLN
50A DC WASHINGTON	DTVPLN	DTVP1762	PLN
49A PA SCRANTON	USERRECORD01		APP

Percent new IX = 0.3499%

Result key: 63
 Scenario 5 Affected station 18
 Before Analysis

Results for: 49A VA HARRISONBURG	DTVPLN	DTVP1755	PLN
HAAT 638.0 m, ATV ERP 65.0 kW			
	POPULATION	AREA (sq km)	
within Noise Limited Contour	857082	28974.9	
not affected by terrain losses	480665	16792.5	
lost to NTSC IX	0	0.0	
lost to additional IX by ATV	5725	136.7	
lost to ATV IX only	5725	136.7	
lost to all IX	5725	136.7	

Potential Interfering Stations Included in above Scenario 5

48A DC WASHINGTON	DTVPLN	DTVP1701	PLN
49A NC RALEIGH	BMPCDDT	20040329AKW	CP
49A NJ ATLANTIC CITY	BLCDDT	20020812ABS	LIC
50A DC WASHINGTON	DTVPLN	DTVP1762	PLN

After Analysis

Results for: 49A VA HARRISONBURG	DTVPLN	DTVP1755	PLN
HAAT 638.0 m, ATV ERP 65.0 kW			
	POPULATION	AREA (sq km)	
within Noise Limited Contour	857082	28974.9	
not affected by terrain losses	480665	16792.5	
lost to NTSC IX	0	0.0	
lost to additional IX by ATV	7387	140.7	
lost to ATV IX only	7387	140.7	
lost to all IX	7387	140.7	

Potential Interfering Stations Included in above Scenario 5

48A DC WASHINGTON	DTVPLN	DTVP1701	PLN
49A NC RALEIGH	BMPCDDT	20040329AKW	CP
49A NJ ATLANTIC CITY	BLCDDT	20020812ABS	LIC
50A DC WASHINGTON	DTVPLN	DTVP1762	PLN
49A PA SCRANTON	USERRECORD01		APP

Percent new IX = 0.3499%

Result key: 64

Figure 3

Scenario 6 Affected station 18
Before Analysis

Results for: 49A VA HARRISONBURG DTVP1755 PLN
HAAT 638.0 m, ATV ERP 65.0 kW

	POPULATION	AREA (sq km)
within Noise Limited Contour	857082	28974.9
not affected by terrain losses	480665	16792.5
lost to NTSC IX	0	0.0
lost to additional IX by ATV	5725	136.7
lost to ATV IX only	5725	136.7
lost to all IX	5725	136.7

Potential Interfering Stations Included in above Scenario 6

48A DC WASHINGTON	DTVPLN	DTVP1701	PLN
49A NC RALEIGH	BMPCDT	20040329AKW	CP
49A NJ ATLANTIC CITY	DTVPLN	DTVP1747	PLN
50A DC WASHINGTON	DTVPLN	DTVP1762	PLN

After Analysis

Results for: 49A VA HARRISONBURG DTVP1755 PLN
HAAT 638.0 m, ATV ERP 65.0 kW

	POPULATION	AREA (sq km)
within Noise Limited Contour	857082	28974.9
not affected by terrain losses	480665	16792.5
lost to NTSC IX	0	0.0
lost to additional IX by ATV	7387	140.7
lost to ATV IX only	7387	140.7
lost to all IX	7387	140.7

Potential Interfering Stations Included in above Scenario 6

48A DC WASHINGTON	DTVPLN	DTVP1701	PLN
49A NC RALEIGH	BMPCDT	20040329AKW	CP
49A NJ ATLANTIC CITY	DTVPLN	DTVP1747	PLN
50A DC WASHINGTON	DTVPLN	DTVP1762	PLN
49A PA SCRANTON	USERRECORD01		APP

Percent new IX = 0.3499%

Result key: 65
Scenario 7 Affected station 18
Before Analysis

Results for: 49A VA HARRISONBURG DTVP1755 PLN
HAAT 638.0 m, ATV ERP 65.0 kW

	POPULATION	AREA (sq km)
within Noise Limited Contour	857082	28974.9
not affected by terrain losses	480665	16792.5
lost to NTSC IX	0	0.0
lost to additional IX by ATV	5725	136.7
lost to ATV IX only	5725	136.7
lost to all IX	5725	136.7

Potential Interfering Stations Included in above Scenario 7

Figure 3

48A DC WASHINGTON	DTVPLN	DTVP1701	PLN
49A NC RALEIGH	DTVPLN	DTVP1745	PLN
49A NJ ATLANTIC CITY	BLCDT	20020812ABS	LIC
50A DC WASHINGTON	DTVPLN	DTVP1762	PLN

After Analysis

Results for: 49A VA HARRISONBURG DTVP1755 PLN
HAAT 638.0 m, ATV ERP 65.0 kW

	POPULATION	AREA (sq km)
within Noise Limited Contour	857082	28974.9
not affected by terrain losses	480665	16792.5
lost to NTSC IX	0	0.0
lost to additional IX by ATV	7387	140.7
lost to ATV IX only	7387	140.7
lost to all IX	7387	140.7

Potential Interfering Stations Included in above Scenario 7

48A DC WASHINGTON	DTVPLN	DTVP1701	PLN
49A NC RALEIGH	DTVPLN	DTVP1745	PLN
49A NJ ATLANTIC CITY	BLCDT	20020812ABS	LIC
50A DC WASHINGTON	DTVPLN	DTVP1762	PLN
49A PA SCRANTON	USERRECORD01		APP

Percent new IX = 0.3499%

Result key: 66
Scenario 8 Affected station 18
Before Analysis

Results for: 49A VA HARRISONBURG DTVP1755 PLN
HAAT 638.0 m, ATV ERP 65.0 kW

	POPULATION	AREA (sq km)
within Noise Limited Contour	857082	28974.9
not affected by terrain losses	480665	16792.5
lost to NTSC IX	0	0.0
lost to additional IX by ATV	5725	136.7
lost to ATV IX only	5725	136.7
lost to all IX	5725	136.7

Potential Interfering Stations Included in above Scenario 8

48A DC WASHINGTON	DTVPLN	DTVP1701	PLN
49A NC RALEIGH	DTVPLN	DTVP1745	PLN
49A NJ ATLANTIC CITY	DTVPLN	DTVP1747	PLN
50A DC WASHINGTON	DTVPLN	DTVP1762	PLN

After Analysis

Results for: 49A VA HARRISONBURG DTVP1755 PLN
HAAT 638.0 m, ATV ERP 65.0 kW

	POPULATION	AREA (sq km)
within Noise Limited Contour	857082	28974.9
not affected by terrain losses	480665	16792.5
lost to NTSC IX	0	0.0

Figure 3

lost to additional IX by ATV 7387 140.7
lost to ATV IX only 7387 140.7
lost to all IX 7387 140.7

Potential Interfering Stations Included in above Scenario 8

48A DC WASHINGTON	DTVPLN	DTVP1701	PLN
49A NC RALEIGH	DTVPLN	DTVP1745	PLN
49A NJ ATLANTIC CITY	DTVPLN	DTVP1747	PLN
50A DC WASHINGTON	DTVPLN	DTVP1762	PLN
49A PA SCRANTON	USERRECORD01		APP

Percent new IX = 0.3499%

Result key: 67
Scenario 9 Affected station 18
Before Analysis

Results for: 49A VA HARRISONBURG DTVPLN DTVP1755 PLN
HAAT 638.0 m, ATV ERP 65.0 kW

	POPULATION	AREA (sq km)
within Noise Limited Contour	857082	28974.9
not affected by terrain losses	480665	16792.5
lost to NTSC IX	0	0.0
lost to additional IX by ATV	5725	136.7
lost to ATV IX only	5725	136.7
lost to all IX	5725	136.7

Potential Interfering Stations Included in above Scenario 9

48A DC WASHINGTON	BLCDT	20000216AAT	LIC
49A NC RALEIGH	BMPCDT	20040329AKW	CP
49A NJ ATLANTIC CITY	BLCDT	20020812ABS	LIC
50A DC WASHINGTON	BPCDT	20080229ACH	APP

After Analysis

Results for: 49A VA HARRISONBURG DTVPLN DTVP1755 PLN
HAAT 638.0 m, ATV ERP 65.0 kW

	POPULATION	AREA (sq km)
within Noise Limited Contour	857082	28974.9
not affected by terrain losses	480665	16792.5
lost to NTSC IX	0	0.0
lost to additional IX by ATV	7387	140.7
lost to ATV IX only	7387	140.7
lost to all IX	7387	140.7

Potential Interfering Stations Included in above Scenario 9

48A DC WASHINGTON	BLCDT	20000216AAT	LIC
49A NC RALEIGH	BMPCDT	20040329AKW	CP
49A NJ ATLANTIC CITY	BLCDT	20020812ABS	LIC
50A DC WASHINGTON	BPCDT	20080229ACH	APP
49A PA SCRANTON	USERRECORD01		APP

Percent new IX = 0.3499%

Figure 3

Result key: 68
Scenario 10 Affected station 18
Before Analysis

Results for: 49A VA HARRISONBURG DTVPLN DTVP1755 PLN
HAAT 638.0 m, ATV ERP 65.0 kW

	POPULATION	AREA (sq km)
within Noise Limited Contour	857082	28974.9
not affected by terrain losses	480665	16792.5
lost to NTSC IX	0	0.0
lost to additional IX by ATV	5725	136.7
lost to ATV IX only	5725	136.7
lost to all IX	5725	136.7

Potential Interfering Stations Included in above Scenario 10

48A DC WASHINGTON	BLCDT	20000216AAT	LIC
49A NC RALEIGH	BMPCDT	20040329AKW	CP
49A NJ ATLANTIC CITY	DTVPLN	DTVP1747	PLN
50A DC WASHINGTON	BPCDT	20080229ACH	APP

After Analysis

Results for: 49A VA HARRISONBURG DTVPLN DTVP1755 PLN
HAAT 638.0 m, ATV ERP 65.0 kW

	POPULATION	AREA (sq km)
within Noise Limited Contour	857082	28974.9
not affected by terrain losses	480665	16792.5
lost to NTSC IX	0	0.0
lost to additional IX by ATV	7387	140.7
lost to ATV IX only	7387	140.7
lost to all IX	7387	140.7

Potential Interfering Stations Included in above Scenario 10

48A DC WASHINGTON	BLCDT	20000216AAT	LIC
49A NC RALEIGH	BMPCDT	20040329AKW	CP
49A NJ ATLANTIC CITY	DTVPLN	DTVP1747	PLN
50A DC WASHINGTON	BPCDT	20080229ACH	APP
49A PA SCRANTON	USERRECORD01		APP

Percent new IX = 0.3499%

Result key: 69
Scenario 11 Affected station 18
Before Analysis

Results for: 49A VA HARRISONBURG DTVPLN DTVP1755 PLN
HAAT 638.0 m, ATV ERP 65.0 kW

	POPULATION	AREA (sq km)
within Noise Limited Contour	857082	28974.9
not affected by terrain losses	480665	16792.5
lost to NTSC IX	0	0.0
lost to additional IX by ATV	5725	136.7
lost to ATV IX only	5725	136.7
lost to all IX	5725	136.7

Figure 3

Potential Interfering Stations Included in above Scenario 11

48A DC WASHINGTON	BLCDDT	20000216AAT	LIC
49A NC RALEIGH	DTVPLN	DTVP1745	PLN
49A NJ ATLANTIC CITY	BLCDDT	20020812ABS	LIC
50A DC WASHINGTON	BPCDDT	20080229ACH	APP

After Analysis

Results for: 49A VA HARRISONBURG DTVPLN DTVP1755 PLN

HAAT 638.0 m, ATV ERP 65.0 kW	POPULATION	AREA (sq km)
within Noise Limited Contour	857082	28974.9
not affected by terrain losses	480665	16792.5
lost to NTSC IX	0	0.0
lost to additional IX by ATV	7387	140.7
lost to ATV IX only	7387	140.7
lost to all IX	7387	140.7

Potential Interfering Stations Included in above Scenario 11

48A DC WASHINGTON	BLCDDT	20000216AAT	LIC
49A NC RALEIGH	DTVPLN	DTVP1745	PLN
49A NJ ATLANTIC CITY	BLCDDT	20020812ABS	LIC
50A DC WASHINGTON	BPCDDT	20080229ACH	APP
49A PA SCRANTON	USERRECORD01		APP

Percent new IX = 0.3499%

Result key: 70

Scenario 12 Affected station 18

Before Analysis

Results for: 49A VA HARRISONBURG DTVPLN DTVP1755 PLN

HAAT 638.0 m, ATV ERP 65.0 kW	POPULATION	AREA (sq km)
within Noise Limited Contour	857082	28974.9
not affected by terrain losses	480665	16792.5
lost to NTSC IX	0	0.0
lost to additional IX by ATV	5725	136.7
lost to ATV IX only	5725	136.7
lost to all IX	5725	136.7

Potential Interfering Stations Included in above Scenario 12

48A DC WASHINGTON	BLCDDT	20000216AAT	LIC
49A NC RALEIGH	DTVPLN	DTVP1745	PLN
49A NJ ATLANTIC CITY	DTVPLN	DTVP1747	PLN
50A DC WASHINGTON	BPCDDT	20080229ACH	APP

After Analysis

Results for: 49A VA HARRISONBURG DTVPLN DTVP1755 PLN

HAAT 638.0 m, ATV ERP 65.0 kW	POPULATION	AREA (sq km)
within Noise Limited Contour	857082	28974.9
not affected by terrain losses	480665	16792.5

Figure 3

lost to NTSC IX 0 0.0

lost to additional IX by ATV 7387 140.7

lost to ATV IX only 7387 140.7

lost to all IX 7387 140.7

Potential Interfering Stations Included in above Scenario 12

48A DC WASHINGTON	BLCDDT	20000216AAT	LIC
49A NC RALEIGH	DTVPLN	DTVP1745	PLN
49A NJ ATLANTIC CITY	DTVPLN	DTVP1747	PLN
50A DC WASHINGTON	BPCDDT	20080229ACH	APP
49A PA SCRANTON	USERRECORD01		APP

Percent new IX = 0.3499%

Result key: 71

Scenario 13 Affected station 18

Before Analysis

Results for: 49A VA HARRISONBURG DTVPLN DTVP1755 PLN

HAAT 638.0 m, ATV ERP 65.0 kW	POPULATION	AREA (sq km)
within Noise Limited Contour	857082	28974.9
not affected by terrain losses	480665	16792.5
lost to NTSC IX	0	0.0
lost to additional IX by ATV	5725	136.7
lost to ATV IX only	5725	136.7
lost to all IX	5725	136.7

Potential Interfering Stations Included in above Scenario 13

48A DC WASHINGTON	DTVPLN	DTVP1701	PLN
49A NC RALEIGH	BMPCDDT	20040329AKW	CP
49A NJ ATLANTIC CITY	BLCDDT	20020812ABS	LIC
50A DC WASHINGTON	BPCDDT	20080229ACH	APP

After Analysis

Results for: 49A VA HARRISONBURG DTVPLN DTVP1755 PLN

HAAT 638.0 m, ATV ERP 65.0 kW	POPULATION	AREA (sq km)
within Noise Limited Contour	857082	28974.9
not affected by terrain losses	480665	16792.5
lost to NTSC IX	0	0.0
lost to additional IX by ATV	7387	140.7
lost to ATV IX only	7387	140.7
lost to all IX	7387	140.7

Potential Interfering Stations Included in above Scenario 13

48A DC WASHINGTON	DTVPLN	DTVP1701	PLN
49A NC RALEIGH	BMPCDDT	20040329AKW	CP
49A NJ ATLANTIC CITY	BLCDDT	20020812ABS	LIC
50A DC WASHINGTON	BPCDDT	20080229ACH	APP
49A PA SCRANTON	USERRECORD01		APP

Percent new IX = 0.3499%

Figure 3

Result key: 72
 Scenario 14 Affected station 18
 Before Analysis

Results for: 49A VA HARRISONBURG DTVPLN DTVP1755 PLN
 HAAT 638.0 m, ATV ERP 65.0 kW

	POPULATION	AREA (sq km)
within Noise Limited Contour	857082	28974.9
not affected by terrain losses	480665	16792.5
lost to NTSC IX	0	0.0
lost to additional IX by ATV	5725	136.7
lost to ATV IX only	5725	136.7
lost to all IX	5725	136.7

Potential Interfering Stations Included in above Scenario 14

48A DC WASHINGTON	DTVPLN	DTVP1701	PLN
49A NC RALEIGH	BMPCDT	20040329AKW	CP
49A NJ ATLANTIC CITY	DTVPLN	DTVP1747	PLN
50A DC WASHINGTON	BPCDT	20080229ACH	APP

After Analysis

Results for: 49A VA HARRISONBURG DTVPLN DTVP1755 PLN
 HAAT 638.0 m, ATV ERP 65.0 kW

	POPULATION	AREA (sq km)
within Noise Limited Contour	857082	28974.9
not affected by terrain losses	480665	16792.5
lost to NTSC IX	0	0.0
lost to additional IX by ATV	7387	140.7
lost to ATV IX only	7387	140.7
lost to all IX	7387	140.7

Potential Interfering Stations Included in above Scenario 14

48A DC WASHINGTON	DTVPLN	DTVP1701	PLN
49A NC RALEIGH	BMPCDT	20040329AKW	CP
49A NJ ATLANTIC CITY	DTVPLN	DTVP1747	PLN
50A DC WASHINGTON	BPCDT	20080229ACH	APP
49A PA SCRANTON	USERRECORD01		APP

Percent new IX = 0.3499%

Result key: 73
 Scenario 15 Affected station 18
 Before Analysis

Results for: 49A VA HARRISONBURG DTVPLN DTVP1755 PLN
 HAAT 638.0 m, ATV ERP 65.0 kW

	POPULATION	AREA (sq km)
within Noise Limited Contour	857082	28974.9
not affected by terrain losses	480665	16792.5
lost to NTSC IX	0	0.0
lost to additional IX by ATV	5725	136.7
lost to ATV IX only	5725	136.7
lost to all IX	5725	136.7

Figure 3

Potential Interfering Stations Included in above Scenario 15

48A DC WASHINGTON	DTVPLN	DTVP1701	PLN
49A NC RALEIGH	DTVPLN	DTVP1745	PLN
49A NJ ATLANTIC CITY	BLCDT	20020812ABS	LIC
50A DC WASHINGTON	BPCDT	20080229ACH	APP

After Analysis

Results for: 49A VA HARRISONBURG DTVPLN DTVP1755 PLN
 HAAT 638.0 m, ATV ERP 65.0 kW

	POPULATION	AREA (sq km)
within Noise Limited Contour	857082	28974.9
not affected by terrain losses	480665	16792.5
lost to NTSC IX	0	0.0
lost to additional IX by ATV	7387	140.7
lost to ATV IX only	7387	140.7
lost to all IX	7387	140.7

Potential Interfering Stations Included in above Scenario 15

48A DC WASHINGTON	DTVPLN	DTVP1701	PLN
49A NC RALEIGH	DTVPLN	DTVP1745	PLN
49A NJ ATLANTIC CITY	BLCDT	20020812ABS	LIC
50A DC WASHINGTON	BPCDT	20080229ACH	APP
49A PA SCRANTON	USERRECORD01		APP

Percent new IX = 0.3499%

Result key: 74
 Scenario 16 Affected station 18
 Before Analysis

Results for: 49A VA HARRISONBURG DTVPLN DTVP1755 PLN
 HAAT 638.0 m, ATV ERP 65.0 kW

	POPULATION	AREA (sq km)
within Noise Limited Contour	857082	28974.9
not affected by terrain losses	480665	16792.5
lost to NTSC IX	0	0.0
lost to additional IX by ATV	5725	136.7
lost to ATV IX only	5725	136.7
lost to all IX	5725	136.7

Potential Interfering Stations Included in above Scenario 16

48A DC WASHINGTON	DTVPLN	DTVP1701	PLN
49A NC RALEIGH	DTVPLN	DTVP1745	PLN
49A NJ ATLANTIC CITY	DTVPLN	DTVP1747	PLN
50A DC WASHINGTON	BPCDT	20080229ACH	APP

After Analysis

Results for: 49A VA HARRISONBURG DTVPLN DTVP1755 PLN
 HAAT 638.0 m, ATV ERP 65.0 kW

	POPULATION	AREA (sq km)
within Noise Limited Contour	857082	28974.9

Figure 3

```

not affected by terrain losses  480665      16792.5
lost to NTSC IX                  0          0.0
lost to additional IX by ATV     7387      140.7
lost to ATV IX only              7387      140.7
lost to all IX                   7387      140.7

Potential Interfering Stations Included in above Scenario  16

48A DC WASHINGTON      DTVPLN      DTVP1701      PLN
49A NC RALEIGH         DTVPLN      DTVP1745      PLN
49A NJ ATLANTIC CITY   DTVPLN      DTVP1747      PLN
50A DC WASHINGTON      BPCDT      20080229ACH  APP
49A PA SCRANTON        USERRECORD01      APP

Percent new IX =      0.3499%

Worst case new IX      0.3499% Scenario      1

#####

Analysis of Interference to Affected Station  19

Analysis of current record
Channel      Call      City/State      Application Ref. No.
  49      WNEP-TV      SCRANTON PA      USERRECORD-01

Stations Potentially Affecting This Station

Chan      Call      City/State      Dist(km) Status Application Ref. No.
  48      WYDC      CORNING NY      145.7  PLN      DTVPLN      -DTV1715
  48      WRNN-TV     KINGSTON NY      164.0  LIC      BLCDDT      -20040908AMF
  48      WRNN-TV     KINGSTON NY      164.0  PLN      DTVPLN      -DTV1716
  49      WEDW      BRIDGEPORT CT    224.7  CP       BPEDT       -20080207AAV
  49      WEDW      BRIDGEPORT CT    224.7  PLN      DTVPLN      -DTV1732
  49      WLNE-TV     NEW BEDFORD MA    388.8  LIC      BLCDDT      -20040930BBS
  49      WLNE-TV     NEW BEDFORD MA    388.8  PLN      DTVPLN      -DTV1742
  49      WEKW-TV     KEENE NH          354.6  LIC      BLEDT       -20030618ABK
  49      WEKW-TV     KEENE NH          354.6  PLN      DTVPLN      -DTV1746
  49      WWSI      ATLANTIC CITY NJ  215.0  LIC      BLCDDT      -20020812ABS
  49      WWSI      ATLANTIC CITY NJ  215.0  PLN      DTVPLN      -DTV1747
  49      WHSV-TV     HARRISONBURG VA   371.1  LIC      BLCDDT      -20060413ACO
  49      WHSV-TV     HARRISONBURG VA   371.1  PLN      DTVPLN      -DTV1755

Total scenarios =      16

Result key:      75
Scenario      1  Affected station      19
Before Analysis

Results for: 49A PA SCRANTON      USERRECORD01      APP
HAAT  508.0 m, ATV ERP  185.0 kW
      POPULATION      AREA (sq km)
within Noise Limited Contour      2434572      29769.2
not affected by terrain losses      1929387      24472.4
lost to NTSC IX                    0          0.0
lost to additional IX by ATV        9088      88.1
lost to ATV IX only                 9088      88.1
lost to all IX                      9088      88.1

```

Figure 3

```

lost to NTSC IX                    0          0.0
lost to additional IX by ATV        9088      88.1
lost to ATV IX only                 9088      88.1
lost to all IX                      9088      88.1

Potential Interfering Stations Included in above Scenario  1

48A NY KINGSTON      BLCDDT      20040908AMF  LIC
49A CT BRIDGEPORT    BPEDT       20080207AAV  CP
49A NH KEENE         DTVPLN      DTVP1746      PLN
49A NJ ATLANTIC CITY BLCDDT      20020812ABS  LIC
49A VA HARRISONBURG BLCDDT      20060413ACO  LIC

Result key:      76
Scenario      2  Affected station      19
Before Analysis

Results for: 49A PA SCRANTON      USERRECORD01      APP
HAAT  508.0 m, ATV ERP  185.0 kW
      POPULATION      AREA (sq km)
within Noise Limited Contour      2434572      29769.2
not affected by terrain losses      1929387      24472.4
lost to NTSC IX                    0          0.0
lost to additional IX by ATV        9088      88.1
lost to ATV IX only                 9088      88.1
lost to all IX                      9088      88.1

Potential Interfering Stations Included in above Scenario  2

48A NY KINGSTON      BLCDDT      20040908AMF  LIC
49A CT BRIDGEPORT    BPEDT       20080207AAV  CP
49A NH KEENE         DTVPLN      DTVP1746      PLN
49A NJ ATLANTIC CITY BLCDDT      20020812ABS  LIC
49A VA HARRISONBURG DTVPLN      DTVP1755      PLN

Result key:      77
Scenario      3  Affected station      19
Before Analysis

Results for: 49A PA SCRANTON      USERRECORD01      APP
HAAT  508.0 m, ATV ERP  185.0 kW
      POPULATION      AREA (sq km)
within Noise Limited Contour      2434572      29769.2
not affected by terrain losses      1929387      24472.4
lost to NTSC IX                    0          0.0
lost to additional IX by ATV        9088      88.1
lost to ATV IX only                 9088      88.1
lost to all IX                      9088      88.1

Potential Interfering Stations Included in above Scenario  3

48A NY KINGSTON      BLCDDT      20040908AMF  LIC
49A CT BRIDGEPORT    BPEDT       20080207AAV  CP
49A NH KEENE         DTVPLN      DTVP1746      PLN
49A NJ ATLANTIC CITY DTVPLN      DTVP1747      PLN
49A VA HARRISONBURG BLCDDT      20060413ACO  LIC

```

Figure 3

Result key: 78
Scenario 4 Affected station 19
Before Analysis

Results for: 49A PA SCRANTON USERRECORD01 APP
HAAT 508.0 m, ATV ERP 185.0 kW

	POPULATION	AREA (sq km)
within Noise Limited Contour	2434572	29769.2
not affected by terrain losses	1929387	24472.4
lost to NTSC IX	0	0.0
lost to additional IX by ATV	9088	88.1
lost to ATV IX only	9088	88.1
lost to all IX	9088	88.1

Potential Interfering Stations Included in above Scenario 4

48A NY KINGSTON	BLCDT	20040908AMF	LIC
49A CT BRIDGEPORT	BPEDT	20080207AAV	CP
49A NH KEENE	DTVPLN	DTVP1746	PLN
49A NJ ATLANTIC CITY	DTVPLN	DTVP1747	PLN
49A VA HARRISONBURG	DTVPLN	DTVP1755	PLN

Result key: 79
Scenario 5 Affected station 19
Before Analysis

Results for: 49A PA SCRANTON USERRECORD01 APP
HAAT 508.0 m, ATV ERP 185.0 kW

	POPULATION	AREA (sq km)
within Noise Limited Contour	2434572	29769.2
not affected by terrain losses	1929387	24472.4
lost to NTSC IX	0	0.0
lost to additional IX by ATV	9634	96.2
lost to ATV IX only	9634	96.2
lost to all IX	9634	96.2

Potential Interfering Stations Included in above Scenario 5

48A NY KINGSTON	BLCDT	20040908AMF	LIC
49A CT BRIDGEPORT	DTVPLN	DTVP1732	PLN
49A NH KEENE	DTVPLN	DTVP1746	PLN
49A NJ ATLANTIC CITY	BLCDT	20020812ABS	LIC
49A VA HARRISONBURG	BLCDT	20060413ACO	LIC

Result key: 80
Scenario 6 Affected station 19
Before Analysis

Results for: 49A PA SCRANTON USERRECORD01 APP
HAAT 508.0 m, ATV ERP 185.0 kW

	POPULATION	AREA (sq km)
within Noise Limited Contour	2434572	29769.2
not affected by terrain losses	1929387	24472.4
lost to NTSC IX	0	0.0
lost to additional IX by ATV	9634	96.2
lost to ATV IX only	9634	96.2
lost to all IX	9634	96.2

Figure 3

Potential Interfering Stations Included in above Scenario 6

48A NY KINGSTON	BLCDT	20040908AMF	LIC
49A CT BRIDGEPORT	DTVPLN	DTVP1732	PLN
49A NH KEENE	DTVPLN	DTVP1746	PLN
49A NJ ATLANTIC CITY	BLCDT	20020812ABS	LIC
49A VA HARRISONBURG	DTVPLN	DTVP1755	PLN

Result key: 81
Scenario 7 Affected station 19
Before Analysis

Results for: 49A PA SCRANTON USERRECORD01 APP
HAAT 508.0 m, ATV ERP 185.0 kW

	POPULATION	AREA (sq km)
within Noise Limited Contour	2434572	29769.2
not affected by terrain losses	1929387	24472.4
lost to NTSC IX	0	0.0
lost to additional IX by ATV	9634	96.2
lost to ATV IX only	9634	96.2
lost to all IX	9634	96.2

Potential Interfering Stations Included in above Scenario 7

48A NY KINGSTON	BLCDT	20040908AMF	LIC
49A CT BRIDGEPORT	DTVPLN	DTVP1732	PLN
49A NH KEENE	DTVPLN	DTVP1746	PLN
49A NJ ATLANTIC CITY	DTVPLN	DTVP1747	PLN
49A VA HARRISONBURG	BLCDT	20060413ACO	LIC

Result key: 82
Scenario 8 Affected station 19
Before Analysis

Results for: 49A PA SCRANTON USERRECORD01 APP
HAAT 508.0 m, ATV ERP 185.0 kW

	POPULATION	AREA (sq km)
within Noise Limited Contour	2434572	29769.2
not affected by terrain losses	1929387	24472.4
lost to NTSC IX	0	0.0
lost to additional IX by ATV	9634	96.2
lost to ATV IX only	9634	96.2
lost to all IX	9634	96.2

Potential Interfering Stations Included in above Scenario 8

48A NY KINGSTON	BLCDT	20040908AMF	LIC
49A CT BRIDGEPORT	DTVPLN	DTVP1732	PLN
49A NH KEENE	DTVPLN	DTVP1746	PLN
49A NJ ATLANTIC CITY	DTVPLN	DTVP1747	PLN
49A VA HARRISONBURG	DTVPLN	DTVP1755	PLN

Result key: 83
Scenario 9 Affected station 19
Before Analysis

Figure 3

Results for: 49A PA SCRANTON USERRECORD01 APP
 HAAT 508.0 m, ATV ERP 185.0 kW

	POPULATION	AREA (sq km)
within Noise Limited Contour	2434572	29769.2
not affected by terrain losses	1929387	24472.4
lost to NTSC IX	0	0.0
lost to additional IX by ATV	9088	88.1
lost to ATV IX only	9088	88.1
lost to all IX	9088	88.1

Potential Interfering Stations Included in above Scenario 9

48A NY KINGSTON	DTVPLN	DTVP1716	PLN
49A CT BRIDGEPORT	BPEDT	20080207AAV	CP
49A NH KEENE	DTVPLN	DTVP1746	PLN
49A NJ ATLANTIC CITY	BLCDT	20020812ABS	LIC
49A VA HARRISONBURG	BLCDT	20060413ACO	LIC

Result key: 84
 Scenario 10 Affected station 19
 Before Analysis

Results for: 49A PA SCRANTON USERRECORD01 APP
 HAAT 508.0 m, ATV ERP 185.0 kW

	POPULATION	AREA (sq km)
within Noise Limited Contour	2434572	29769.2
not affected by terrain losses	1929387	24472.4
lost to NTSC IX	0	0.0
lost to additional IX by ATV	9088	88.1
lost to ATV IX only	9088	88.1
lost to all IX	9088	88.1

Potential Interfering Stations Included in above Scenario 10

48A NY KINGSTON	DTVPLN	DTVP1716	PLN
49A CT BRIDGEPORT	BPEDT	20080207AAV	CP
49A NH KEENE	DTVPLN	DTVP1746	PLN
49A NJ ATLANTIC CITY	BLCDT	20020812ABS	LIC
49A VA HARRISONBURG	DTVPLN	DTVP1755	PLN

Result key: 85
 Scenario 11 Affected station 19
 Before Analysis

Results for: 49A PA SCRANTON USERRECORD01 APP
 HAAT 508.0 m, ATV ERP 185.0 kW

	POPULATION	AREA (sq km)
within Noise Limited Contour	2434572	29769.2
not affected by terrain losses	1929387	24472.4
lost to NTSC IX	0	0.0
lost to additional IX by ATV	9088	88.1
lost to ATV IX only	9088	88.1
lost to all IX	9088	88.1

Potential Interfering Stations Included in above Scenario 11

48A NY KINGSTON	DTVPLN	DTVP1716	PLN
-----------------	--------	----------	-----

Figure 3

49A CT BRIDGEPORT	BPEDT	20080207AAV	CP
49A NH KEENE	DTVPLN	DTVP1746	PLN
49A NJ ATLANTIC CITY	DTVPLN	DTVP1747	PLN
49A VA HARRISONBURG	BLCDT	20060413ACO	LIC

Result key: 86
 Scenario 12 Affected station 19
 Before Analysis

Results for: 49A PA SCRANTON USERRECORD01 APP
 HAAT 508.0 m, ATV ERP 185.0 kW

	POPULATION	AREA (sq km)
within Noise Limited Contour	2434572	29769.2
not affected by terrain losses	1929387	24472.4
lost to NTSC IX	0	0.0
lost to additional IX by ATV	9088	88.1
lost to ATV IX only	9088	88.1
lost to all IX	9088	88.1

Potential Interfering Stations Included in above Scenario 12

48A NY KINGSTON	DTVPLN	DTVP1716	PLN
49A CT BRIDGEPORT	BPEDT	20080207AAV	CP
49A NH KEENE	DTVPLN	DTVP1746	PLN
49A NJ ATLANTIC CITY	DTVPLN	DTVP1747	PLN
49A VA HARRISONBURG	DTVPLN	DTVP1755	PLN

Result key: 87
 Scenario 13 Affected station 19
 Before Analysis

Results for: 49A PA SCRANTON USERRECORD01 APP
 HAAT 508.0 m, ATV ERP 185.0 kW

	POPULATION	AREA (sq km)
within Noise Limited Contour	2434572	29769.2
not affected by terrain losses	1929387	24472.4
lost to NTSC IX	0	0.0
lost to additional IX by ATV	9634	96.2
lost to ATV IX only	9634	96.2
lost to all IX	9634	96.2

Potential Interfering Stations Included in above Scenario 13

48A NY KINGSTON	DTVPLN	DTVP1716	PLN
49A CT BRIDGEPORT	DTVPLN	DTVP1732	PLN
49A NH KEENE	DTVPLN	DTVP1746	PLN
49A NJ ATLANTIC CITY	BLCDT	20020812ABS	LIC
49A VA HARRISONBURG	BLCDT	20060413ACO	LIC

Result key: 88
 Scenario 14 Affected station 19
 Before Analysis

Results for: 49A PA SCRANTON USERRECORD01 APP
 HAAT 508.0 m, ATV ERP 185.0 kW

	POPULATION	AREA (sq km)
within Noise Limited Contour	2434572	29769.2

Figure 3

```
not affected by terrain losses  1929387      24472.4
lost to NTSC IX                  0          0.0
lost to additional IX by ATV      9634      96.2
lost to ATV IX only              9634      96.2
lost to all IX                  9634      96.2

Potential Interfering Stations Included in above Scenario  14

48A NY KINGSTON      DTVPLN      DTVP1716      PLN
49A CT BRIDGEPORT    DTVPLN      DTVP1732      PLN
49A NH KEENE         DTVPLN      DTVP1746      PLN
49A NJ ATLANTIC CITY BLCDT      20020812ABS  LIC
49A VA HARRISONBURG  DTVPLN      DTVP1755      PLN

Result key:          89
Scenario            15 Affected station      19
Before Analysis

Results for: 49A PA SCRANTON      USERRECORD01      APP
HAAT  508.0 m, ATV ERP  185.0 kW

      POPULATION      AREA (sq km)
within Noise Limited Contour      2434572      29769.2
not affected by terrain losses  1929387      24472.4
lost to NTSC IX                  0          0.0
lost to additional IX by ATV      9634      96.2
lost to ATV IX only              9634      96.2
lost to all IX                  9634      96.2

Potential Interfering Stations Included in above Scenario  15

48A NY KINGSTON      DTVPLN      DTVP1716      PLN
49A CT BRIDGEPORT    DTVPLN      DTVP1732      PLN
49A NH KEENE         DTVPLN      DTVP1746      PLN
49A NJ ATLANTIC CITY DTVPLN      DTVP1747      PLN
49A VA HARRISONBURG  BLCDT      20060413ACO  LIC

Result key:          90
Scenario            16 Affected station      19
Before Analysis

Results for: 49A PA SCRANTON      USERRECORD01      APP
HAAT  508.0 m, ATV ERP  185.0 kW

      POPULATION      AREA (sq km)
within Noise Limited Contour      2434572      29769.2
not affected by terrain losses  1929387      24472.4
lost to NTSC IX                  0          0.0
lost to additional IX by ATV      9634      96.2
lost to ATV IX only              9634      96.2
lost to all IX                  9634      96.2

Potential Interfering Stations Included in above Scenario  16

48A NY KINGSTON      DTVPLN      DTVP1716      PLN
49A CT BRIDGEPORT    DTVPLN      DTVP1732      PLN
49A NH KEENE         DTVPLN      DTVP1746      PLN
49A NJ ATLANTIC CITY DTVPLN      DTVP1747      PLN
49A VA HARRISONBURG  DTVPLN      DTVP1755      PLN
```

Figure 3

```
#####
FINISHED FINISHED FINISHED FINISHED FINISHED FINISHED
```

APPENDIX

TRANSMITTING ANTENNA
VERTICAL PLANE PATTERN



Proposal Number	C-02632	Revision:	1
Date	21-May-08		
Call Letters	WNEP-DT	Channel	49
Location	Scranton, PA		
Customer			
Antenna Type	TFU-13JTH/VP-R 04		

ELEVATION PATTERN

RMS Gain at Main Lobe	13.00 (11.14 dB)	Beam Tilt	1.00 deg
RMS Gain at Horizontal	10.90 (10.37 dB)	Frequency	683.00 MHz
Calculated / Measured	Calculated	Drawing #	13J130100



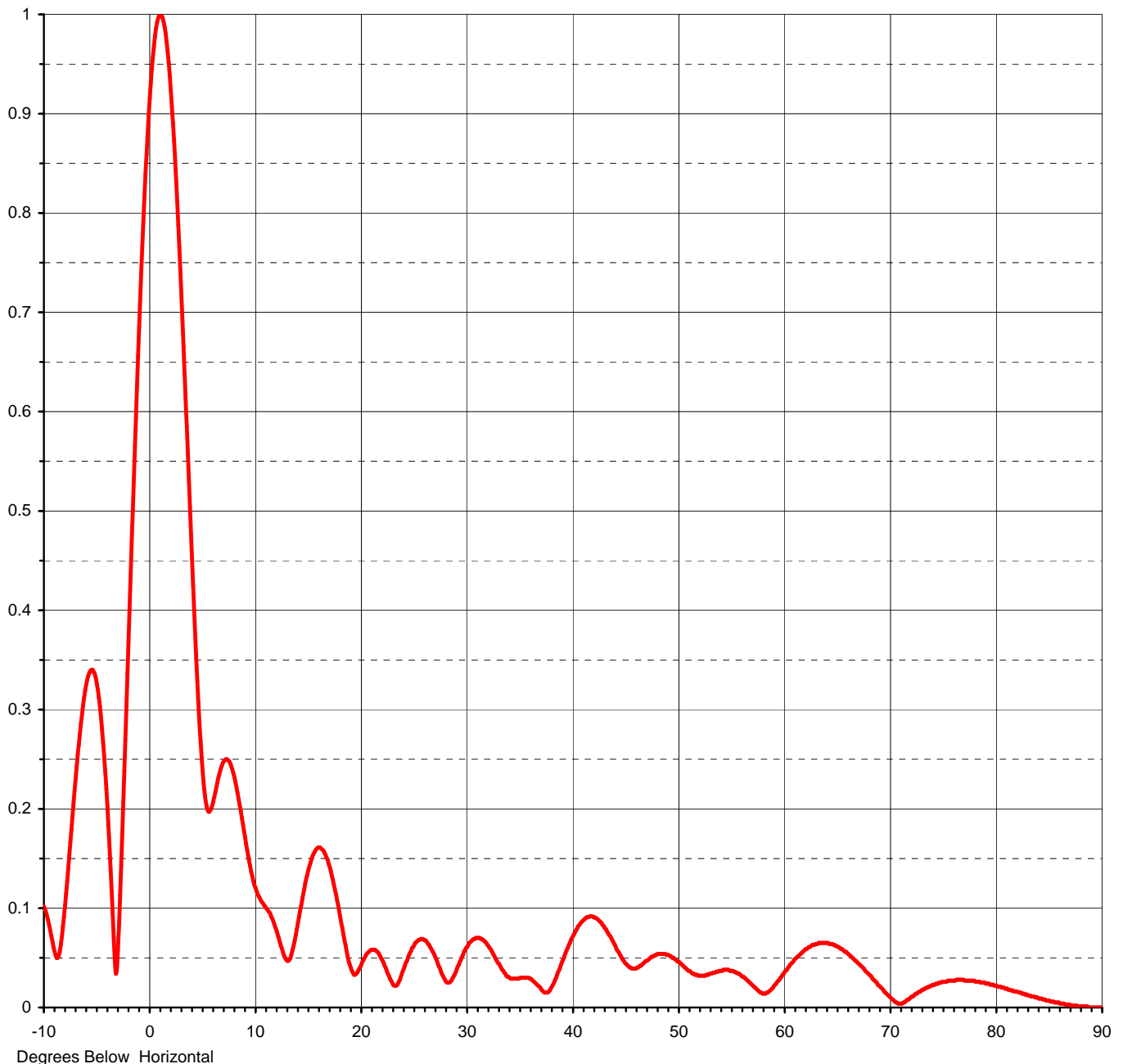
Degrees Below Horizontal



Proposal Number	C-02632	Revision:	1
Date	21-May-08		
Call Letters	WNEP-DT	Channel	49
Location	Scranton, PA		
Customer			
Antenna Type	TFU-13JTH/VP-R O4		

ELEVATION PATTERN

RMS Gain at Main Lobe	13.00 (11.14 dB)	Beam Tilt	1.00 deg
RMS Gain at Horizontal	10.90 (10.37 dB)	Frequency	683.00 MHz
Calculated / Measured	Calculated	Drawing #	13J130100-90





Proposal Number **C-02632** Revision: **1**
Date **21-May-08**
Call Letters **WNEP-DT** Channel **49**
Location **Scranton, PA**
Customer
Antenna Type **TFU-13JTH/VP-R 04**

TABULATION OF ELEVATION PATTERN

Elevation Pattern Drawing #: **13J130100-90**

Angle	Field	Angle	Field	Angle	Field	Angle	Field	Angle	Field	Angle	Field
-10.0	0.102	2.4	0.853	10.6	0.108	30.5	0.067	51.0	0.037	71.5	0.007
-9.5	0.083	2.6	0.811	10.8	0.105	31.0	0.070	51.5	0.034	72.0	0.011
-9.0	0.057	2.8	0.765	11.0	0.102	31.5	0.069	52.0	0.032	72.5	0.014
-8.5	0.056	3.0	0.716	11.5	0.094	32.0	0.063	52.5	0.032	73.0	0.018
-8.0	0.103	3.2	0.665	12.0	0.080	32.5	0.055	53.0	0.034	73.5	0.020
-7.5	0.166	3.4	0.612	12.5	0.062	33.0	0.045	53.5	0.035	74.0	0.023
-7.0	0.230	3.6	0.558	13.0	0.048	33.5	0.037	54.0	0.037	74.5	0.024
-6.5	0.286	3.8	0.504	13.5	0.054	34.0	0.031	54.5	0.038	75.0	0.026
-6.0	0.325	4.0	0.451	14.0	0.079	34.5	0.029	55.0	0.037	75.5	0.027
-5.5	0.340	4.2	0.400	14.5	0.108	35.0	0.029	55.5	0.035	76.0	0.027
-5.0	0.326	4.4	0.351	15.0	0.134	35.5	0.030	56.0	0.032	76.5	0.028
-4.5	0.280	4.6	0.307	15.5	0.153	36.0	0.029	56.5	0.028	77.0	0.027
-4.0	0.202	4.8	0.269	16.0	0.161	36.5	0.025	57.0	0.023	77.5	0.027
-3.5	0.095	5.0	0.238	16.5	0.158	37.0	0.020	57.5	0.018	78.0	0.026
-3.0	0.058	5.2	0.215	17.0	0.145	37.5	0.015	58.0	0.014	78.5	0.025
-2.8	0.113	5.4	0.202	17.5	0.124	38.0	0.019	58.5	0.015	79.0	0.024
-2.6	0.174	5.6	0.197	18.0	0.097	38.5	0.030	59.0	0.020	79.5	0.023
-2.4	0.238	5.8	0.200	18.5	0.068	39.0	0.044	59.5	0.027	80.0	0.022
-2.2	0.303	6.0	0.207	19.0	0.043	39.5	0.058	60.0	0.034	80.5	0.020
-2.0	0.369	6.2	0.217	19.5	0.033	40.0	0.070	60.5	0.041	81.0	0.019
-1.8	0.435	6.4	0.227	20.0	0.041	40.5	0.080	61.0	0.048	81.5	0.017
-1.6	0.501	6.6	0.236	20.5	0.052	41.0	0.087	61.5	0.053	82.0	0.016
-1.4	0.564	6.8	0.243	21.0	0.058	41.5	0.091	62.0	0.058	82.5	0.014
-1.2	0.626	7.0	0.248	21.5	0.057	42.0	0.091	62.5	0.061	83.0	0.012
-1.0	0.685	7.2	0.250	22.0	0.049	42.5	0.088	63.0	0.064	83.5	0.011
-0.8	0.740	7.4	0.249	22.5	0.037	43.0	0.082	63.5	0.065	84.0	0.009
-0.6	0.791	7.6	0.246	23.0	0.025	43.5	0.073	64.0	0.065	84.5	0.008
-0.4	0.838	7.8	0.240	23.5	0.023	44.0	0.064	64.5	0.064	85.0	0.007
-0.2	0.879	8.0	0.232	24.0	0.036	44.5	0.054	65.0	0.061	85.5	0.005
0.0	0.915	8.2	0.222	24.5	0.050	45.0	0.045	65.5	0.058	86.0	0.004
0.2	0.945	8.4	0.210	25.0	0.061	45.5	0.040	66.0	0.054	86.5	0.003
0.4	0.968	8.6	0.198	25.5	0.068	46.0	0.039	66.5	0.049	87.0	0.002
0.6	0.986	8.8	0.185	26.0	0.068	46.5	0.042	67.0	0.044	87.5	0.002
0.8	0.996	9.0	0.172	26.5	0.063	47.0	0.047	67.5	0.039	88.0	0.001
1.0	1.000	9.2	0.159	27.0	0.053	47.5	0.051	68.0	0.033	88.5	0.001
1.2	0.997	9.4	0.147	27.5	0.040	48.0	0.053	68.5	0.027	89.0	0.000
1.4	0.988	9.6	0.136	28.0	0.028	48.5	0.054	69.0	0.021	89.5	0.000
1.6	0.972	9.8	0.132	28.5	0.026	49.0	0.053	69.5	0.015	90.0	0.000
1.8	0.951	10.0	0.123	29.0	0.035	49.5	0.050	70.0	0.010		
2.0	0.923	10.2	0.117	29.5	0.048	50.0	0.046	70.5	0.005		
2.2	0.890	10.4	0.112	30.0	0.060	50.5	0.042	71.0	0.004		

This document contains proprietary and confidential information of Dielectric Communications and SPX Corporation. It is to be used solely for the purpose for which it is provided. No disclosure, reproduction, or use of this document or any part of it may be made without the written permission of Dielectric Communications or SPX Corporation.