

# Educational Media Foundation

5700 West Oaks Boulevard ♦ Rocklin ♦ California ♦ 95765

Exhibit 13

Bakersfield, CA

## Channel Study

REFERENCE		CH# 240D - 95.9 MHz, Pwr= 0.055 kW, HAAT= 23.3 M, COR= 168 M								DISPLAY DATES	
35 20 23.0 N.		Average Protected F(50-50)= 4.8 km								DATA 03-21-13	
118 58 49.0 W.		Omni-directional								SEARCH 03-21-13	
CH CITY	CALL	TYPE	ANT STATE	AZI. <--	DIST FILE #	LAT. LNG.	Pwr(kW) HAAT(M)	INT(km) COR(M)	PRO(km) LICENSEE	*IN* (Overlap	*OUT* in km)
243B Bakersfield	KPSL-FM	LIC	CX CA	27.1 207.2	18.19 BMLH20050720AEX	35 29 08.0 118 53 19.0	50.000 152	8.6 514	80.5 Texas Lotus Corp.	4.8	-63.4*
237B1 Oildale	KLLY	LIC	CN CA	344.7 164.7	13.74 BLH199111108KA	35 27 33.0 119 01 13.0	12.500 141	4.6 339	51.1 Buckley Broadcasting Of Ca	4.3	-38.1*
240D Bakersfield	630906	APP	C CA	0.0 0.0	0.00 BNPFT20030314ACS	35 20 23.0 118 58 49.0	0.055 23	15.5 168	4.8 Educational Media Foundati	-20.3*	-20.3*
239D Bakersfield	K239BB	LIC	C CA	283.4 103.3	15.46 BLFT20120306ABD	35 22 18.6 119 08 45.2	0.120 26	8.4 141	5.9 Ondas De Vida, Inc.	0.7	0.4
239A Lake Isabella	AL7731	VAC	 CA	60.4 240.8	55.94 RM9818	35 35 11.0 118 26 34.0	6.000 100	49.5 1415	32.6 Dana J. Puopolo	1.6	16.5
239D Bakersfield	K239BB	CP	C CA	287.6 107.5	16.85 BPFT20121001AZT	35 23 06.9 119 09 25.8	0.080	8.3 153	5.9 Ondas De Vida, Inc.	2.1	1.8
240B1 Camarillo	KOCP	LIC	NCN CA	196.6 16.4	114.68 BLH19980209KF	34 20 55.0 119 20 13.0	1.200 444	104.3 689	45.7 Gold Coast Broadcasting Ll	3.3	41.0
241D Buttonwillow	K295AZ	CP	DV CA	306.6 126.4	41.50 BPFT20111214AEG	35 33 42.0 119 20 54.0	0.220	9.6 109	6.7 First Ventures Capital Par	25.9	26.2
239D Lake Isabella	K239AZ	LIC	C CA	43.0 223.3	55.79 BLFT20070108AAA	35 42 21.0 118 33 31.0	0.010 808	22.1 2174	14.0 Living Proof, Inc.	28.9	34.9
241A Mojave	KCEL	LIC	NCX CA	112.7 293.1	70.46 BMLH20101130API	35 05 38.0 118 16 00.0	0.630 251	34.2 1466	22.9 Coloma Mojave, Llc	31.5	40.7
238B Los Angeles	KLOS	LIC	CY CA	145.7 326.3	149.13 BLH19840702CP	34 13 37.0 118 03 58.0	63.000 954	11.5 1851	100.2 Radio License Holding Xii,	131.5	47.9
241A Visalia	KSLK	CP	NCX CA	354.8 174.7	105.45 BPH20120904AAA	36 17 10.0 119 05 15.0	0.670 300	48.8 496	32.0 New Visalia Broadcasting,	51.9	66.6
240A Camarillo	KOCP	CP	CX CA	182.8 2.8	101.90 BPH20121016ACW	34 25 20.0 119 02 04.0	1.000 245	35.6 892	10.2 Gold Coast Broadcasting Ll	59.1	67.9
241A Visalia	KSLK	LIC	NCN CA	351.1 171.0	115.32 BLH19941115KA	36 21 59.0 119 10 45.0	4.800 110	47.1 239	31.0 New Visalia Broadcasting,	63.3	77.5

Terrain database is NGDC 30 SEC, R= 73.215 qualifying spacings or FCC minimum spacings in KM, M= Margin in KM  
 Contour distances are on direct line to and from reference station.  
 Reference Zone= East Zone 2A, Co to 3rd adjacent.  
 All separation margins (if shown) include rounding  
 Ant Column: (D= DA Standard, Z= DA 73.215, N= Not DA 73.215, \_= Omni), Polarization (C,H,V,E), Beamtilt(Y,N,X)  
 "\*"affixed to 'IN' or 'OUT' values = site inside protected contour.  
 Reference station has protected zone issue:

**Compliance with C.F.R. 74.1204**

The proposed FM Translator is located within the protected 60 dBu contour of second adjacent channel station KPSL-FM, channel 243B Bakersfield, CA. According to 74.1204(a)(3), in order to protect second and third adjacent facilities, the difference in dBu between the two facilities must not exceed 40dBu.

The proposed ERP for 20030314ACS.P:	0.055 watts
The proposed COR for 20030314ACS.P:	50 meters
KPSL-FM F(50/50) contour at proposed site:	87.3 dBu
The F(50/10) contour of proposed 20030314ACS.P	127.3 dBu
The predicted distance to 20030314ACS.P interference contour:	22.4 meters

The signal is predicted to not reach the ground. As can be seen in the attached aerial photo (see Exhibit 13–D), there are no regularly occupied structures at the base of the tower and there are no structures which could be tall enough to enter the 22.4 meter aperture.

Therefore, EMF respectfully requests a waiver of C.F.R. 74.1204 based on no population within the area of predicted interference.

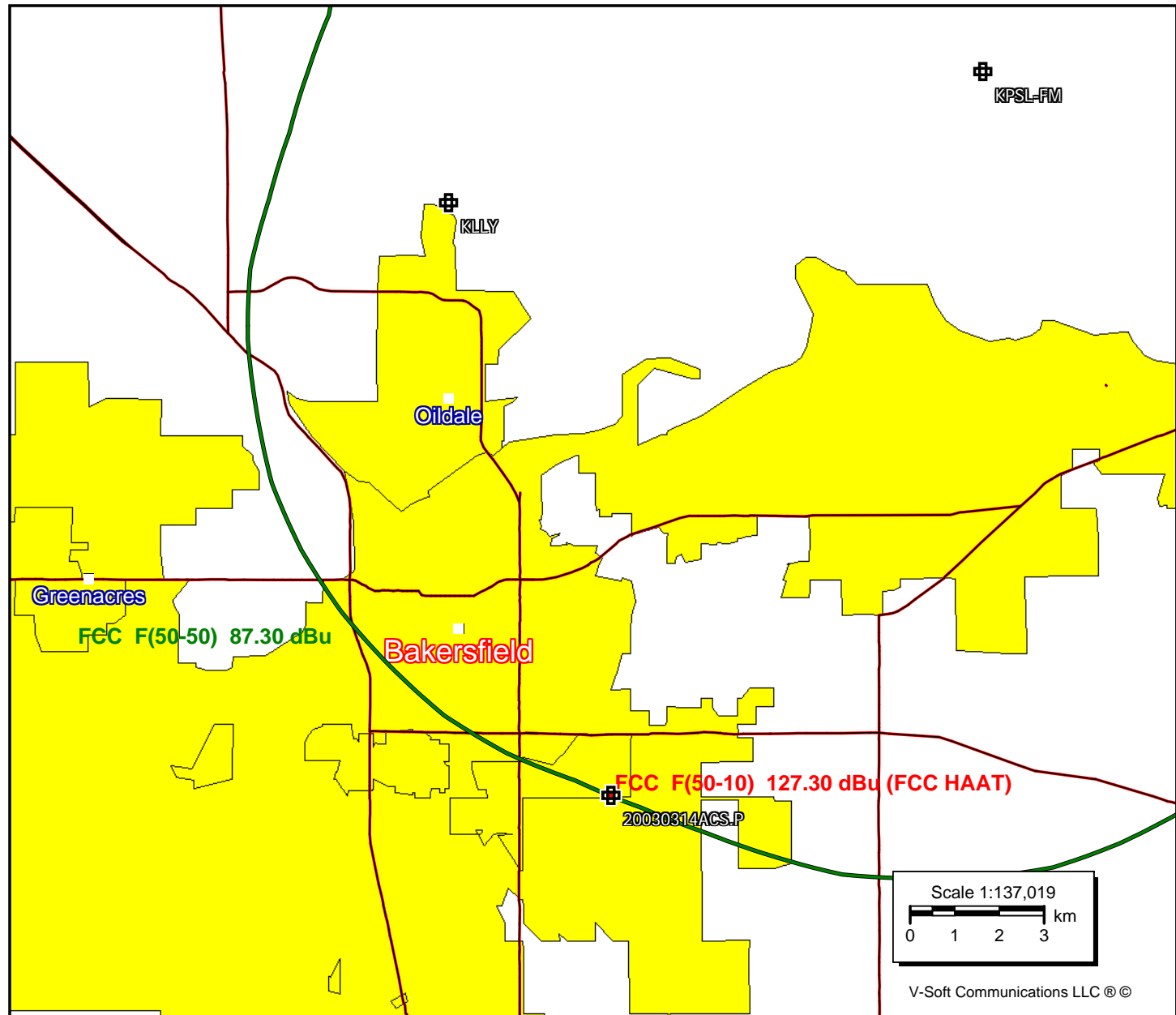
## Exhibit 13-A1

### 20030314ACS.P

Latitude: 35-20-23 N  
Longitude: 118-58-49 W  
ERP: 0.055 kW  
Channel: 240  
Frequency: 95.9 MHz  
AMSL Height: 168.0 m  
Horiz. Pattern: Omni

### KPSL-FM

BMLH20050720AEX  
Latitude: 35-29-08 N  
Longitude: 118-53-19 W  
ERP: 50.00 kW  
Channel: 243  
Frequency: 96.5 MHz  
AMSL Height: 514.0 m  
Horiz. Pattern: Omni



**Compliance with C.F.R. 74.1204**

The proposed FM Translator is located within the protected 60 dBu contour of second adjacent channel station KLLY, channel 237B1 Oildale, CA. According to 74.1204(a)(3), in order to protect second and third adjacent facilities, the difference in dBu between the two facilities must not exceed 40dBu.

The proposed ERP for 20030314ACS.P:	0.055 watts
The proposed COR for 20030314ACS.P:	50 meters
KLLY F(50/50) contour at proposed site:	81.9 dBu
The F(50/10) contour of proposed 20030314ACS.P	121.9 dBu
The predicted distance to 20030314ACS.P interference contour:	41.7 meters

The signal is predicted to not reach the ground. As can be seen in the attached aerial photo (see Exhibit 13–D), there are no regularly occupied structures at the base of the tower and there are no structures which could be tall enough to enter the 41.7 meter aperture.

Therefore, EMF respectfully requests a waiver of C.F.R. 74.1204 based on no population within the area of predicted interference.

## Exhibit 13-B1

### 20030314ACS.P

Latitude: 35-20-23 N  
Longitude: 118-58-49 W  
ERP: 0.055 kW  
Channel: 240  
Frequency: 95.9 MHz  
AMSL Height: 168.0 m  
Horiz. Pattern: Omni

### KLLY

BLH19911108KA  
Latitude: 35-27-33 N  
Longitude: 119-01-13 W  
ERP: 12.50 kW  
Channel: 237  
Frequency: 95.3 MHz  
AMSL Height: 339.0 m  
Horiz. Pattern: Omni

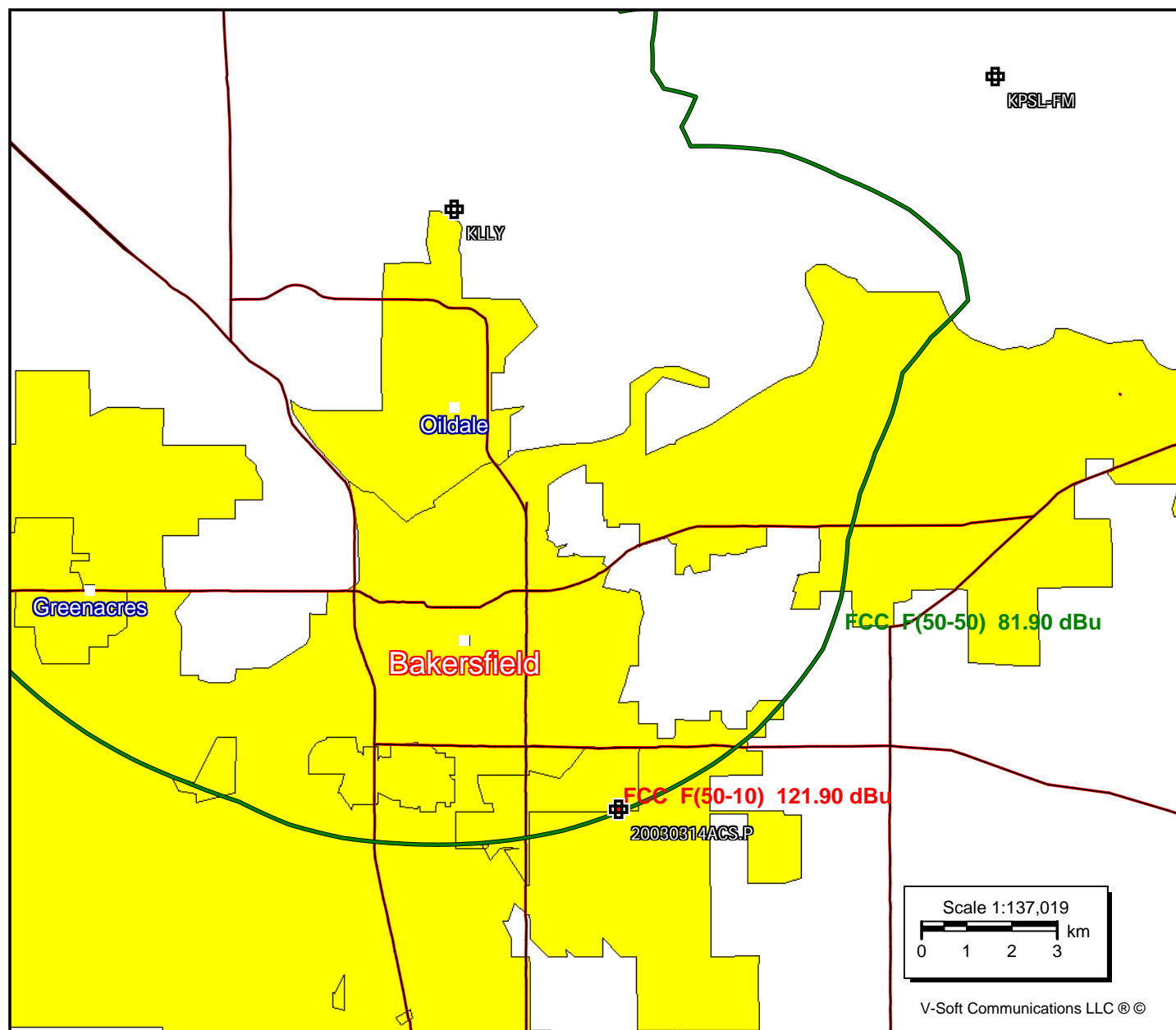
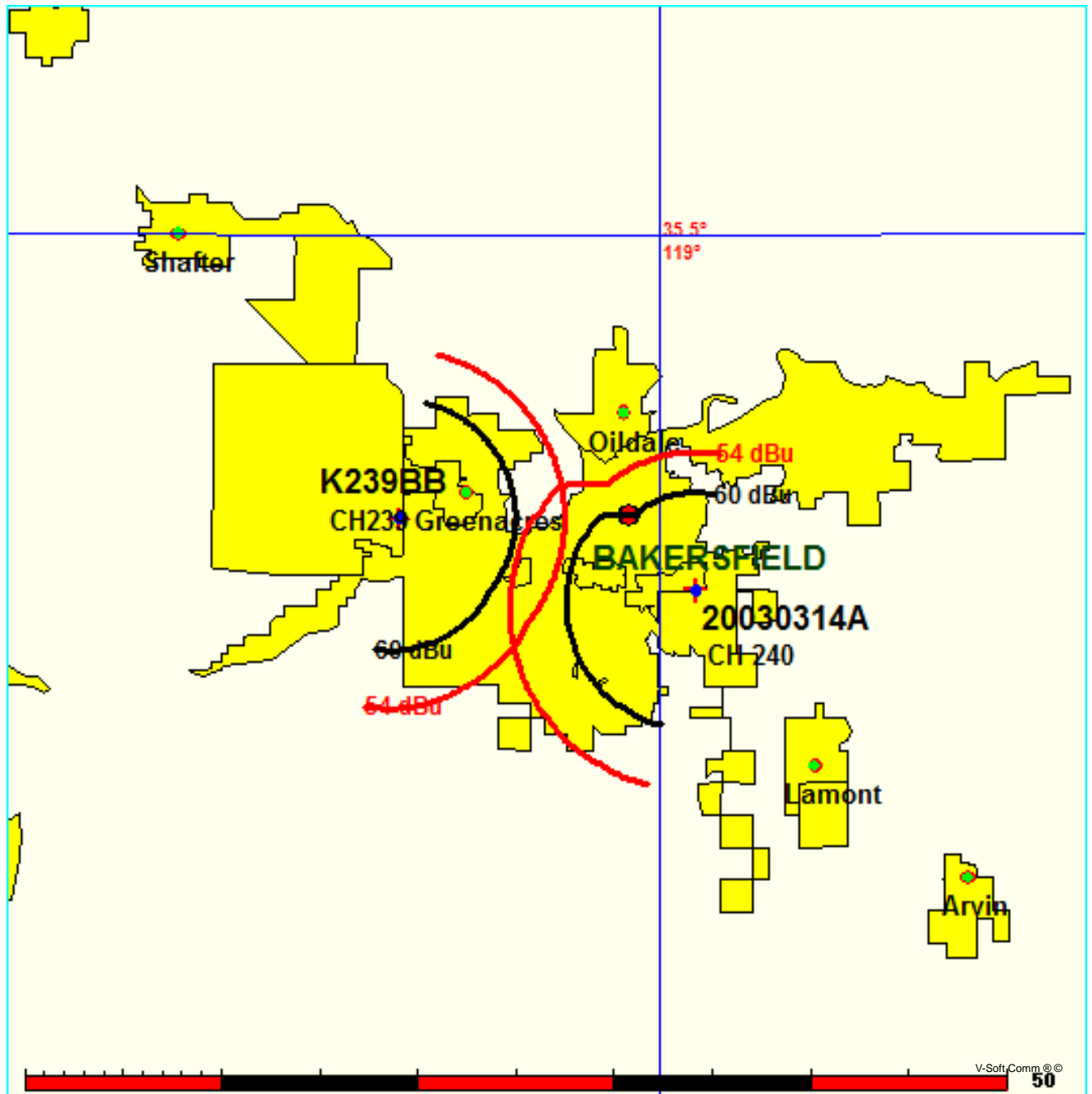


Exhibit 13-C

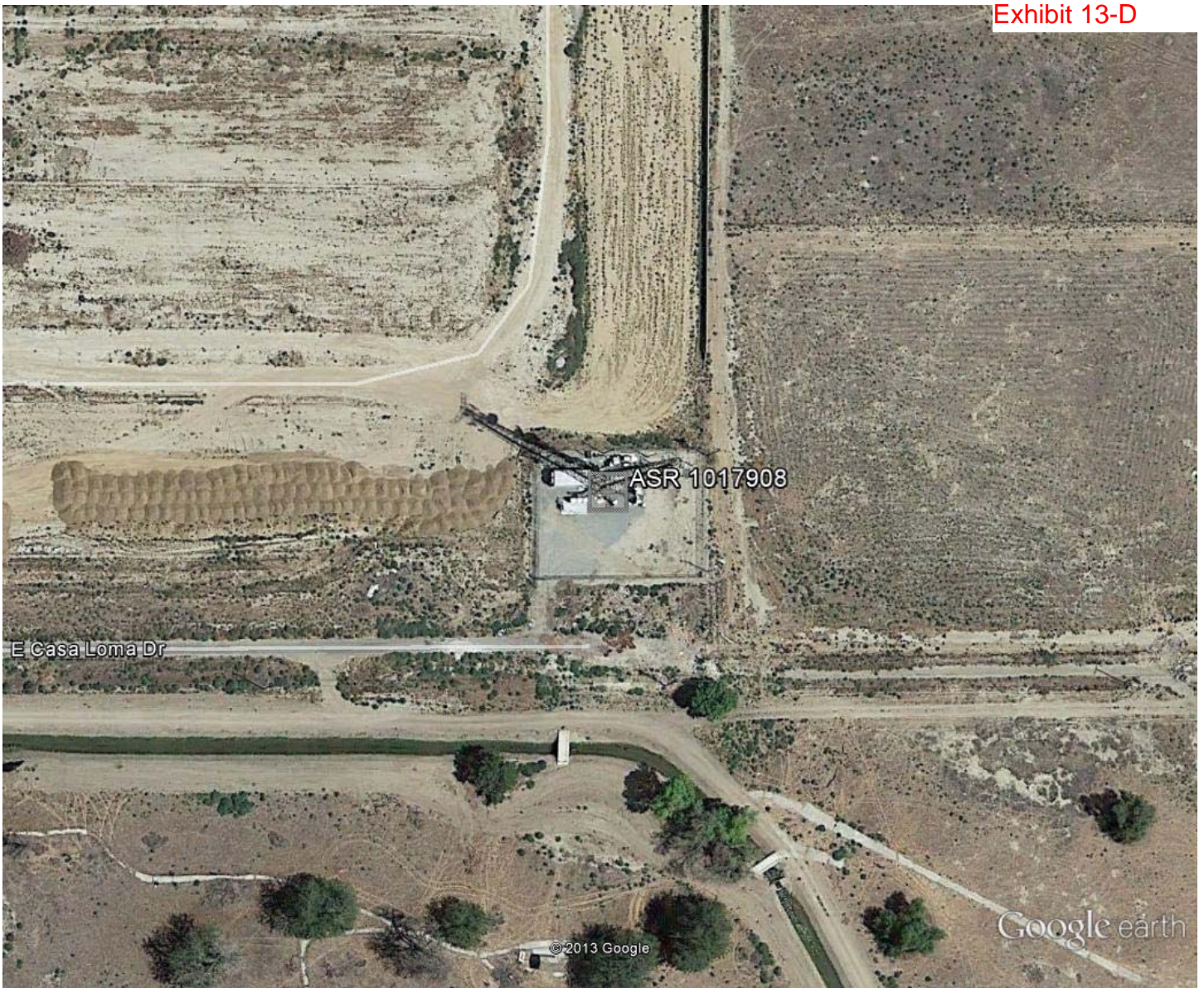
FMCommander Single Allocation Study - 03-21-2013 - NGDC 30 SEC  
20030314A's Overlaps (In= 0.69 km, Out= 0.41 km)

20030314A CH 240 D  
Lat= 35 20 23.0, Lng= 118 58 49.0  
0.055 kW 23.3 M HAAT, 168 M COR  
Prot.= 60 dBu, Intef.= 54 dBu

K239BB CH 239 D BLFT20120306ABD  
Lat= 35 22 18.6, Lng= 119 08 45.2  
0.12 kW 26.4 M HAAT, 141 M COR  
Prot.= 60 dBu, Intef.= 54 dBu







Google earth

feet 400  
meters 100

