

TECHNICAL EXHIBIT
SATELLITE REQUEST FOR STATION
KBEO-DT (FACILITY ID 35103)
JACKSON, WYOMING
CH 11 3.2 KW (MAX-DA) 327 M

Technical Narrative

This Technical Exhibit supports a request for Television Satellite Status for station KBEO at Jackson, Wyoming. KBEO requests to operate as a satellite of co-owned station KPIF (Pocatello, ID).

KBEO and KPIF currently operate under an existing waiver of the local television multiple ownership rule (i.e., there is existing analog Grade B contour overlap). This overlap will continue to exist in the digital world if the predicted Noise-Limited contours for both stations are assumed to be the equivalent to the analog Grade B for ownership study purposes. Figure 1 is a coverage map showing the existing analog and proposed digital contours for KBEO (30 kW ERP/603 meters) and KPIF (1000 kW ERP/341 meters). As can be seen, there is proposed overlap between the predicted Noise-Limited contours. This overlap area amounts to 4,407 square kilometers in which 4,371 people reside. This represents 10.8% of the KBEO Noise-Limited service area and 6.4% of the population. It represents 17.4% of the KPIF Noise-Limited service area and 1.7% of the population.

While the map in Figure 1 does indicate some predicted overlap of DTV City Grade contours, it is apparent that the terrain between the stations will severely limit the actual overlap. Figure 2 is a site-to site terrain profile. As can be seen, the terrain between the stations is not favorable for propagation between the stations.

Figure 3 is a map showing the predicted “Longley-Rice” City Grade coverage for both KBEO-DT and KPIF-DT. As can be seen, there is little common overlap of the City Grade contours. Specifically, the Longley-Rice City Grade overlap area amounts to 14 square kilometers in which no people reside. This represents 0.1% of the KBEO Noise-Limited service area 0.2% of the KPIF Noise-Limited service area. For upper VHF station KBEO-DT, a 5 dB clutter factor was employed, while for UHF station KPIF-DT a 10 dB clutter factor was used. Further Longley-Rice assumptions for both stations are detailed in Figure 4.

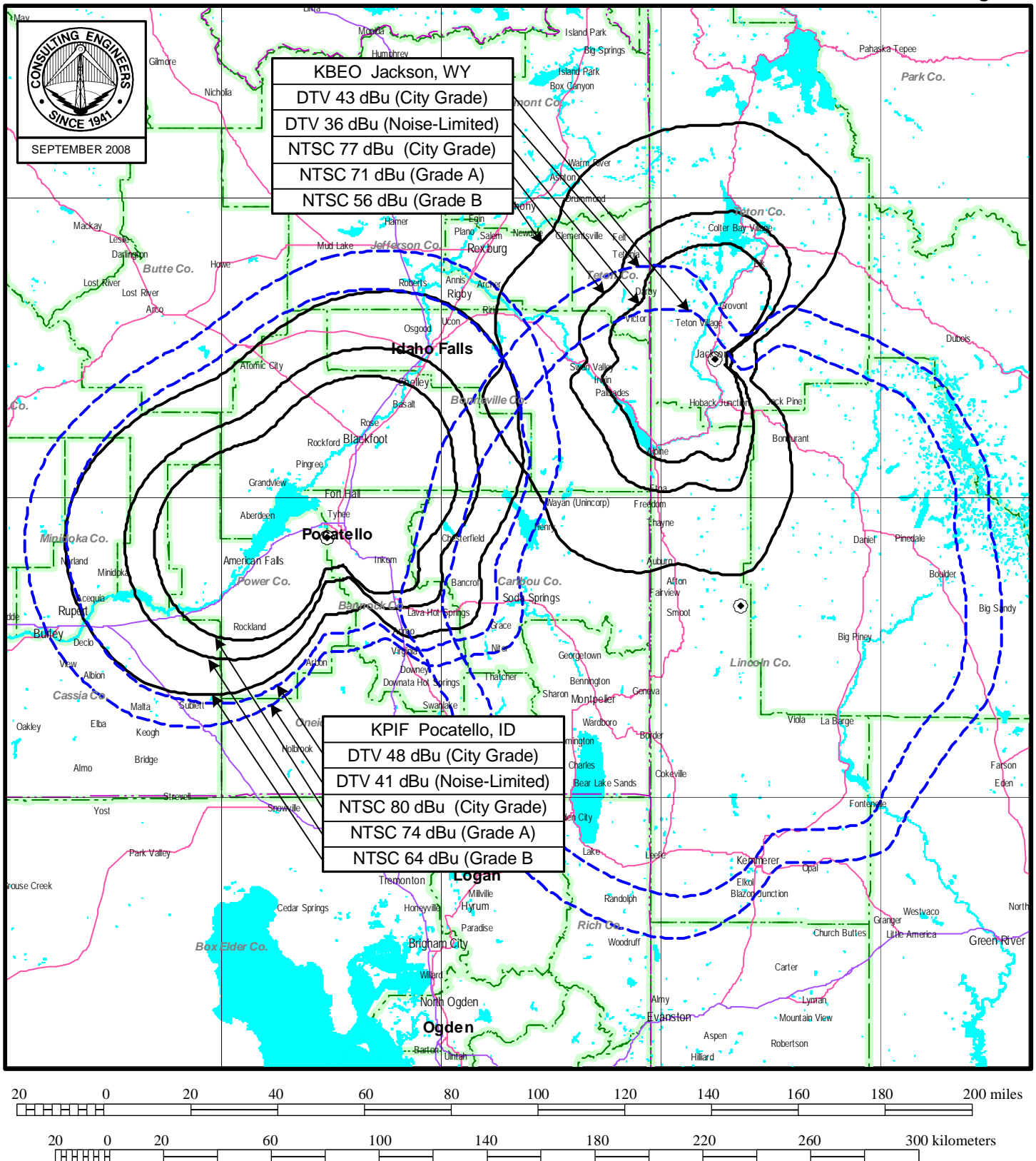


Jonathan N. Edwards

du Treil, Lundin & Rackley, Inc.
201 Fletcher Avenue
Sarasota, Florida 34237
(941) 329-6000
JON@DLR.COM

September 26, 2008

Figure 1

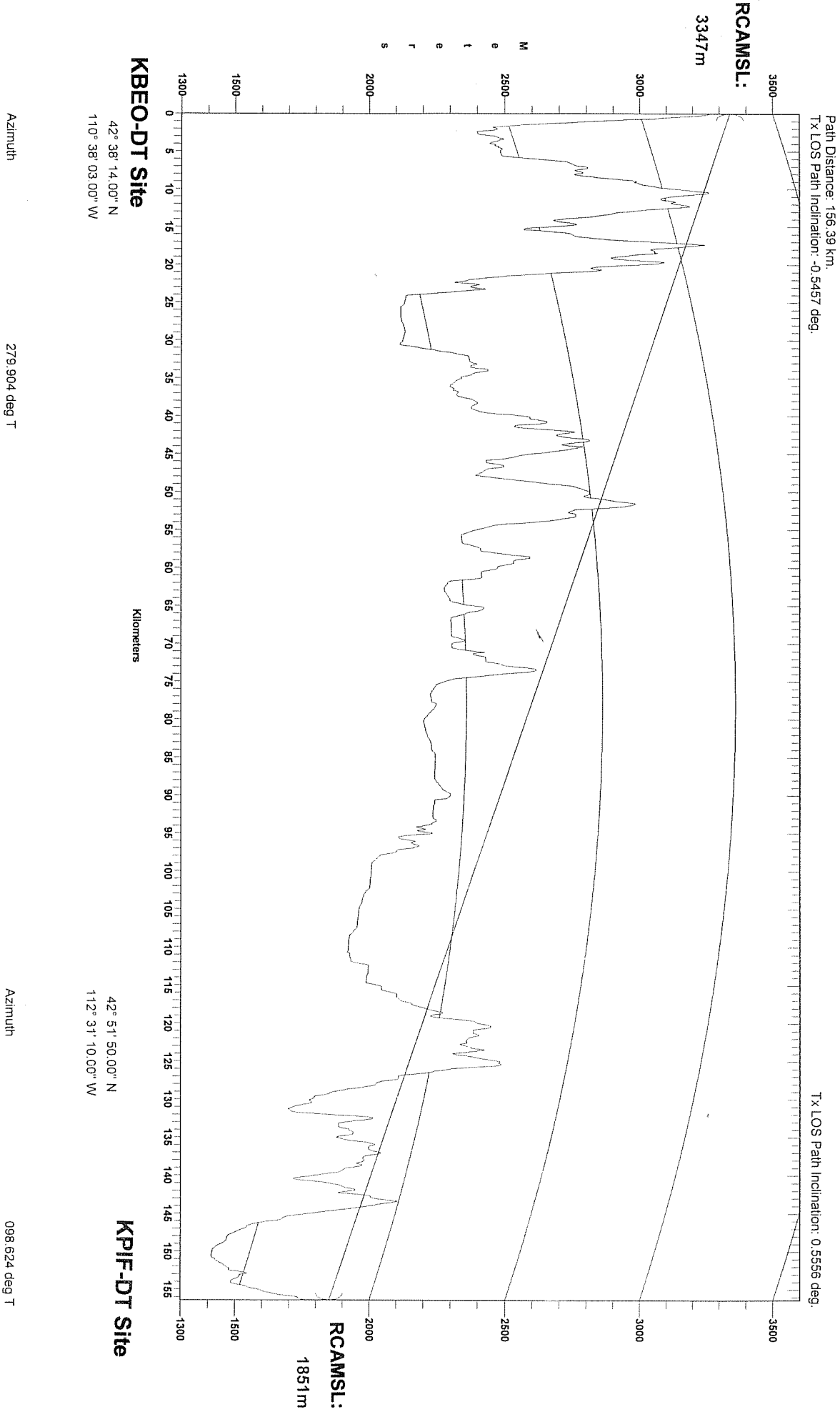


CONTOUR OVERLAP STUDY

STATIONS KPIF/KBEO

du Treil, Lundin & Rackley, Inc Sarasota, Florida

Figure 2



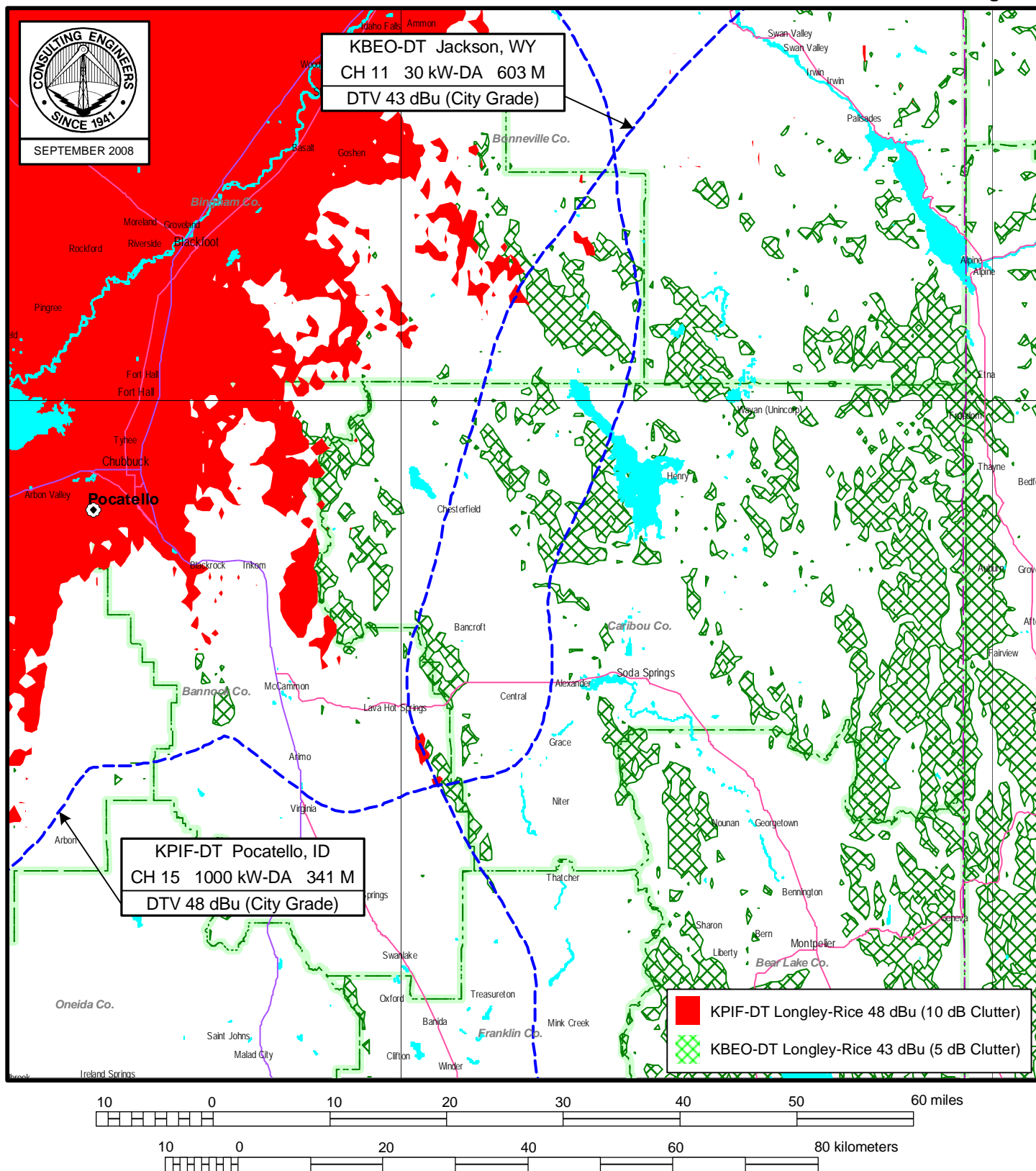
KEY:

Profile

K = 4/3

K = 4/3, F = 0.6 F1

Figure 3



CONTOUR OVERLAP STUDY

STATIONS KPIF/KBEO

du Treil, Lundin & Rackley, Inc Sarasota, Florida

Figure 4

Propagation [32-bit Version]		Station Desc: KPIF_POCATELLO_ID	
Machine: JON		Coordinates 42-51-50 (NAD 27) 112-31-10	Vertical Antenna
Date and Time: 9/26/2008 1:59:38 PM			
System Description		RCAMSL: 1851 m RHAGL: 9.1 m ERP: 1000 kW Channel: 15 Frequency: 479 MHz Polarization: Horizontal	Antenna ID: 0 Electrical Tilt: 0 deg Mechanical Tilt: 0 deg Mechanical Azimuth: 0 deg -90.00 1.000 50.00 1.000
Longley-Rice Calculations: Yes			
Tirem Calculations: No		Time: 90 Location: 50 Confidence: 50 Permittivity: 15.0 Conductivity: 0.005 Refractivity: 301.0 Climate Code: 5.0 Humidity: 15.0 Advanced: Angle to Receiver Grid File: No	
Longley-Rice Grid File:			
I: \LR\KPIFAPP.txt		Horizontal Antenna	
Terrain			
Database: 3 Second Terrain Database		Antenna ID: 87781 Rotation: 0 deg 0.00 0.570 10.00 0.745 20.00 0.899 30.00 0.987 35.00 1.000 40.00 0.993 50.00 0.928 60.00 0.796 70.00 0.628 80.00 0.441 90.00 0.282 100.00 0.195 110.00 0.183 120.00 0.182 130.00 0.186 140.00 0.190 150.00 0.192 160.00 0.189 170.00 0.184 180.00 0.181 190.00 0.186 200.00 0.212 210.00 0.343 220.00 0.517 230.00 0.697 240.00 0.858 250.00 0.964 260.00 1.000 270.00 0.963 280.00 0.842 290.00 0.676 300.00 0.502 310.00 0.361 320.00 0.270 330.00 0.248 340.00 0.297 350.00 0.410 360.00 0.570	
Location: o:\ned3\		Grid Study	
Spacing: 0.000833 deg			
Increment: 0.1 km		Coordinates 042-45-00 (NAD 27) 111-35-00	
Cell Size: 0.01 deg		Number of Stations: 1	
Dimensions: 300 x 300			

Figure 4

Propagation [32-bit Version]		Station Desc: KBEO_JACKSON_WY	
Machine: JON		Coordinates 42-38-14	
Date and Time: 9/26/2008 2:14:53 PM		(NAD 27) 110-38-03	
System Description		Vertical Antenna	
Longley-Rice Calculations: Yes		Antenna ID: 0	
Tirem Calculations: No		Electrical Tilt: 0 deg	
Longley-Rice Grid File:		Mechanical Tilt: 0 deg	
I:\LR\KBEOAPP.txt		Mechanical Azimuth: 0 deg	
Terrain		-90.00 1.000 90.00 1.000	
Database: 3 Second Terrain Database			
Location: o:\ned3\			
Spacing: 0.000833 deg			
Increment: 0.1 km			
Grid Study			
Coordinates 042-45-00		Time: 90	
(NAD 27) 111-35-00		Location: 50	
Cell Size: 0.01 deg		Confidence: 50	
Dimensions: 300 x 300		Permittivity: 15.0	
Number of Stations: 1		Conductivity: 0.005	
		Refractivity: 301.0	
		Climate Code: 5.0	
		Humidity: 15.0	
		Advanced: Angle to Receiver	
		Grid File: No	
		Horizontal Antenna	
		Antenna ID: 87915	
		Rotation: 0 deg	
		0.00 0.980 10.00 0.950	
		20.00 0.875 30.00 0.775	
		40.00 0.630 50.00 0.470	
		60.00 0.350 70.00 0.230	
		80.00 0.220 90.00 0.225	
		100.00 0.230 110.00 0.225	
		120.00 0.220 130.00 0.230	
		140.00 0.350 150.00 0.470	
		160.00 0.630 170.00 0.775	
		180.00 0.875 190.00 0.950	
		200.00 0.980 210.00 1.000	
		220.00 0.975 230.00 0.940	
		240.00 0.920 250.00 0.925	
		260.00 0.950 270.00 0.970	
		280.00 1.000 290.00 0.970	
		300.00 0.950 310.00 0.925	
		320.00 0.920 330.00 0.940	
		340.00 0.975 250.00 1.000	
		360.00 0.980	