

## Exhibit 13.2

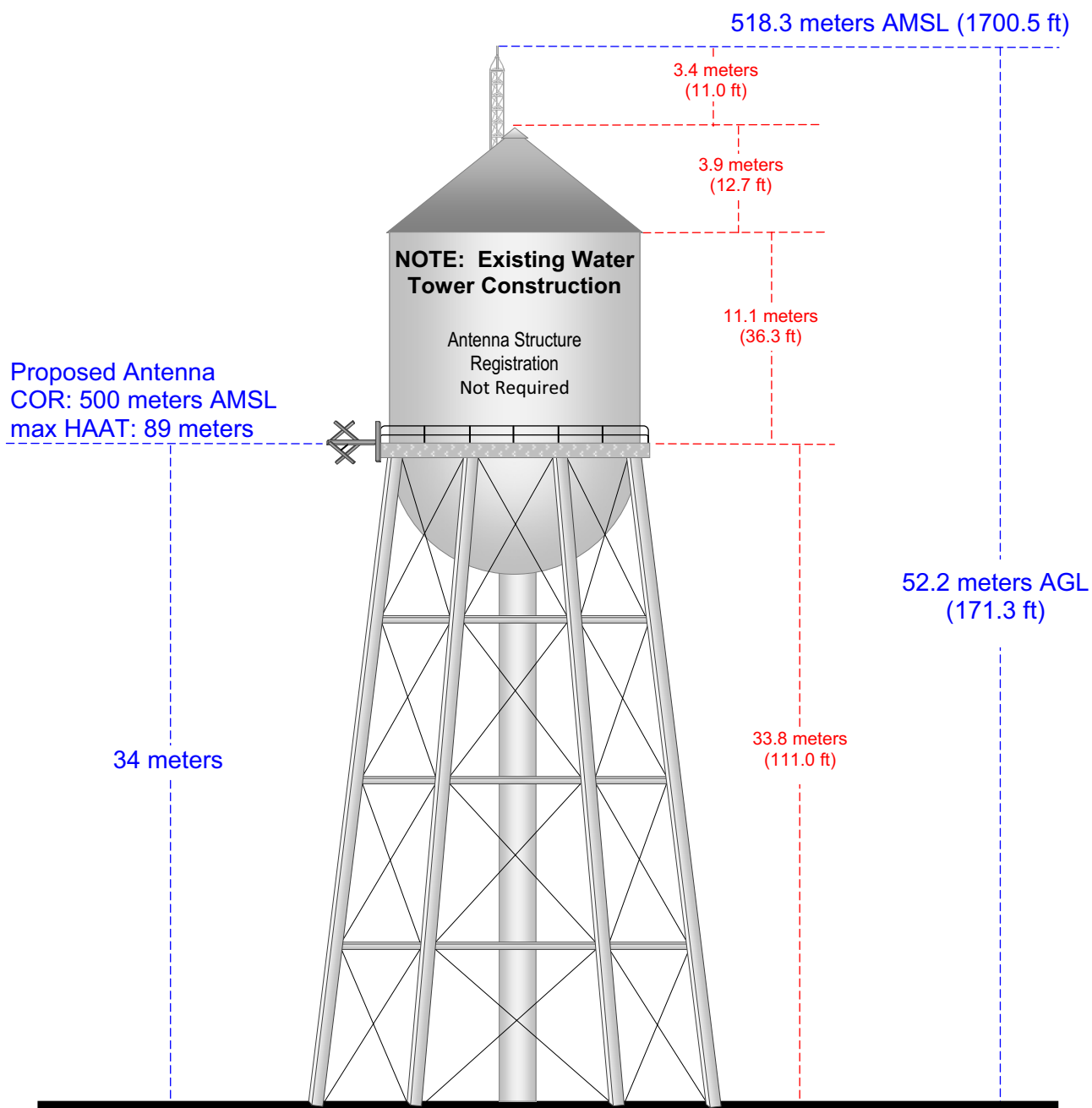
### Vertical Plan of Antenna System

The site is located 0.2 km west of the "H" intersection of 3rd Ave E and E 13th St.  
the city of Hibbing, St. Louis County, Minnesota.

#### Site Location (NAD 27)

NL: 47° 26' 09"

WL: 92° 56' 29"



Ground Elevation = 466.1 m AMSL (1529.3 ft)

Drawing is not to Scale

**MUNN-REESE, INC.**

Broadcast Engineering Consultants  
Coldwater, MI 49036

**CH234D.P**  
Proposed Operation  
Latitude: 47-26-08 N  
Longitude: 092-56-29 W  
ERP: 0.012 kW  
Channel: 234  
Frequency: 94.7 MHz  
AMSL Height: 500.0 m  
Horiz. Pattern: Omni  
Vert. Pattern: No  
Prop Model: None

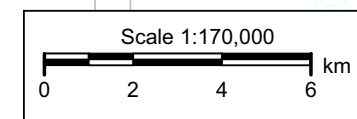
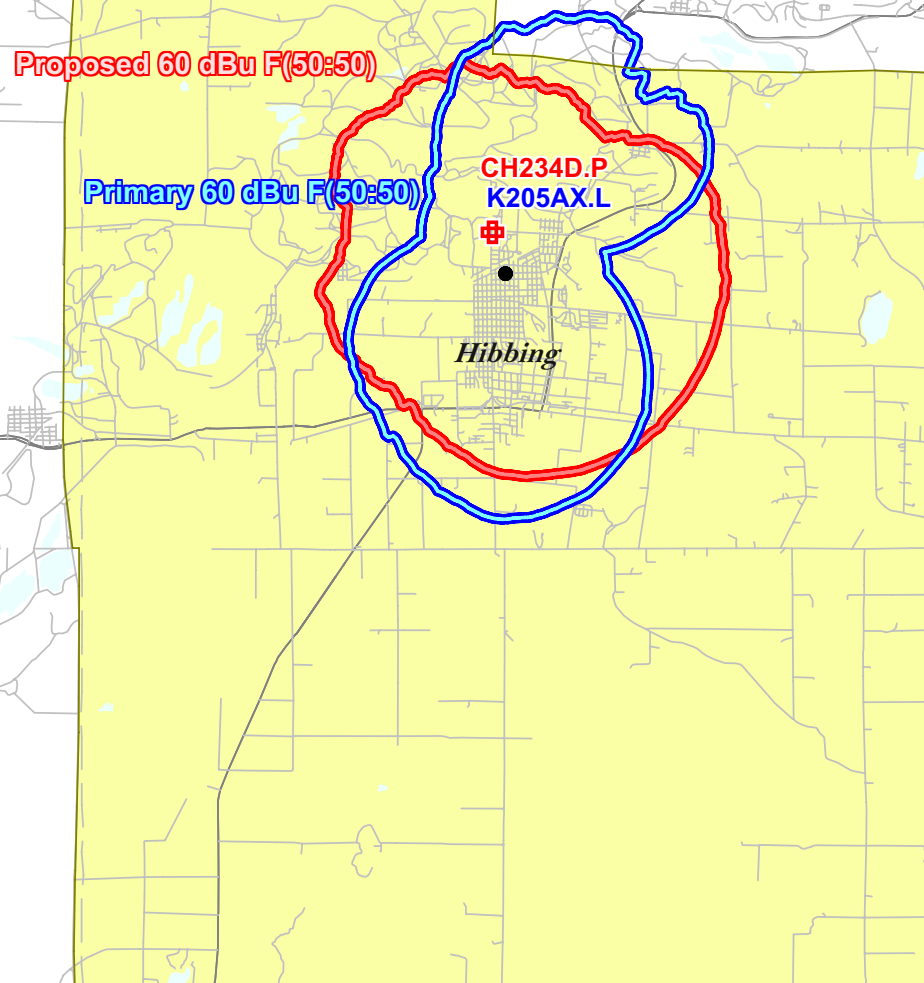
60 dBu Contour  
Total Population: 13,614  
Total Area: 62 sq. km

**K205AX.L**  
BLFT19851010TC  
Latitude: 47-26-08 N  
Longitude: 092-56-29 W  
ERP: 0.043 kW  
Channel: 205  
Frequency: 88.9 MHz  
AMSL Height: 509.0 m  
Horiz. Pattern: Directional  
Vert. Pattern: No  
Prop Model: None

60 dBu Contour  
Total Population: 13,410  
Total Area: 59 sq. km

## Exhibit 13.3

### Present vs. Proposed Service Contour Study



CH234D.P  
Proposed Operation  
Latitude: 47-26-08 N  
Longitude: 092-56-29 W  
ERP: 0.012 kW  
Channel: 234  
Frequency: 94.7 MHz  
AMSL Height: 500.0 m  
Horiz. Pattern: Omni  
Vert. Pattern: No  
Prop Model: None

## Exhibit 13.4 Proposed vs. Primary Service Contour Study

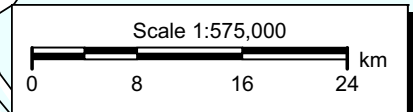
Primary 34 dBu F(50:50)

CH234D.P  
*Hibbing*  
Proposed 60 dBu F(50:50)

Primary 60 dBu F(50:50)

KDNW.L

KDNW.L  
BLED20100129AAU  
Latitude: 46-47-20 N  
Longitude: 092-07-04 W  
ERP: 72.00 kW  
Channel: 247  
Frequency: 97.3 MHz  
AMSL Height: 474.0 m  
Horiz. Pattern: Omni  
Vert. Pattern: No  
Prop Model: None





# Exhibit 13.5

## Tabulation of Proposed Allocation

### Northwestern College

REFERENCE		CH# 234D - 94.7 MHz, Pwr= 0.012 kw, HAAT= 57.5 M, COR= 500 M								DISPLAY DATES		
47 26 09.0 N.		Average Protected F(50-50)= 4.64 km								DATA 07-24-10		
92 56 29.0 W.		Omni-directional								SEARCH 07-29-10		
CH CITY	CALL	TYPE STATE	ANT	AZI <--	DIST FILE #	LAT LNG	PWR(kw) HAAT(M)	INT(km) COR(M)	PRO(km) LICENSEE	*IN* (Overlap in km)	*OUT*	
235C1 Duluth	KQDS-FM	LIC _CX MN		138.6 319.2	94.9 BLH20020429AAN	46 47 37.0 92 07 03.0	100.000 258	86.8 569	57.2 Red Rock Radio Corp.	2.3	29.5	
237D Virginia	W237AO	LIC _HN MN		79.4 259.7	32.3 BLFT19870629TB	47 29 18.0 92 31 12.0	0.016 168	0.3 610	8.9 Heartland Christian Broadc	27.0	23.2	
TRANSLATOR FOR KBHW, INTERNATIONAL FALLS, MN.												
234C2 Staples	KSKK	LIC _C_ MN		233.5 52.2	163.0 BLH20000831AGW	46 33 08.0 94 39 03.0	50.000 143	133.7 560	48.1 Normin Broadcasting Co.	24.8	101.0	
236D Grand Rapids	K236AD	LIC _CN MN		245.5 65.1	42.2 BLFT19960418TB	47 16 39.0 93 26 58.0	0.017 108	0.3 514	6.7 Heartland Christian Broadc	37.7	35.3	
Translator for KADU, Hibbing, MN-												
233A Ely	WELY-FM	LIC _C_ MN		57.3 238.1	95.7 BLH19920615KC	47 53 40.0 91 51 50.0	6.000 100	35.9 534	23.7 Bois Forte Tribal Council	55.7	66.3	
232C3 Aitkin	KKIN-FM	LIC _CN MN		211.2 30.7	97.0 BLH19960911KA	46 41 18.0 93 35 58.0	14.000 133	3.9 508	38.7 Red Rock Radio Corp.	88.7	58.1	
233C1 Baudette	AL0524	VAC _ MN		319.8 138.6	188.0 RM11097	48 42 52.0 94 35 32.0	100.000 299	105.1 632	72.4 R.p. Broadcasting, Inc.	79.0	110.1	
New Allotment.												
231D Duluth	K231BI	LIC _C_ MN		138.5 319.1	94.8 BLFT20041012AIE	46 47 41.0 92 07 05.0	0.250	1.1 505	11.4 Red Rock Radio Corp.	87.8	83.2	
237D Babbitt	K237BE	LIC _HN MN		72.0 252.9	93.5 BLFT19870824TD	47 41 19.0 91 45 23.0	0.053 110	0.5 593	9.4 Heartland Christian Broadc	88.1	83.9	
237D Ely	K237CE	LIC _HN MN		57.7 238.6	98.6 BLFT19870106TB	47 54 10.0 91 49 31.0	0.009 -26	0.2 496	3.2 Heartland Christian Broadc	94.3	95.2	
TRANSLATOR FOR KBHW, INTERNATIONAL FALLS, MN.												
231C1 Red Lake	VA8595	VAC _N MN		287.9 106.1	186.5	47 55 30.0 95 19 00.0	100.000 299	10.2 660	72.8	172.4	113.4	
Accepted by Canada 931014												
237C1 Grand Marais	WXXZ	LIC _CN MN		80.5 262.2	170.2 BLH19990719KC	47 39 55.0 90 42 22.0	63.000 209	5.6 549	49.7 Red Rock Radio Corp.	159.4	120.3	
232C2 Hayward	AL4630	VAC _ WI		137.5 318.6	177.4 RM9819	46 15 04.0 91 23 01.0	50.000 150	6.5 562	55.6 Escanaba License Corp	165.0	121.6	
NULL 10/20/2004: per MB 04-137 reserved for noncommercial educ. use												
232C2 Hayward	1358208	APP NCX WI		136.2 317.4	187.3 BNPED20100226AFY	46 12 31.0 91 15 32.0	50.000 145	5.8 572	51.4 True North Community Outre	175.7	135.7	
233C St. Paul	KSTP-FM	LIC _CY MN		183.4 3.2	264.3 BMLH19910923KF	45 03 45.0 93 08 22.0	100.000 372	115.2 647	77.8 Kstp-fm, Llc	143.8	179.1	

Terrain database is NGDC 30 SEC , R= 73.215 qualifying spacings or FCC minimum Spacings in KM, M= Margin in KM  
 Contour distances are on direct line to and from reference station. Reference zone = 2, Co to 3rd adjacent.  
 Ant Column: (D= DA Standard, Z= DA 73.215, N= Not DA 73.215, \_= Omni), Polarization (C,H,V,E), Beamtilt(Y,N,X)  
 "<" = Contour Overlap