

Exhibit 11B Page 1
Multicultural Professional Counseling Services
Reduction of Interference
Kansas City, MO

This statement is being prepared on behalf of Multicultural Professional Counseling Services ("MPCS") in support of the minor change to the licensed facility of KLHW-LP (Facility ID 194138, Kansas City, MO.) to show a reduction in interference under the provisions of §73.870(a)(1). The instant application is proposing a change in channel from channel 245 to channel 213, with a change in antenna location coordinates.

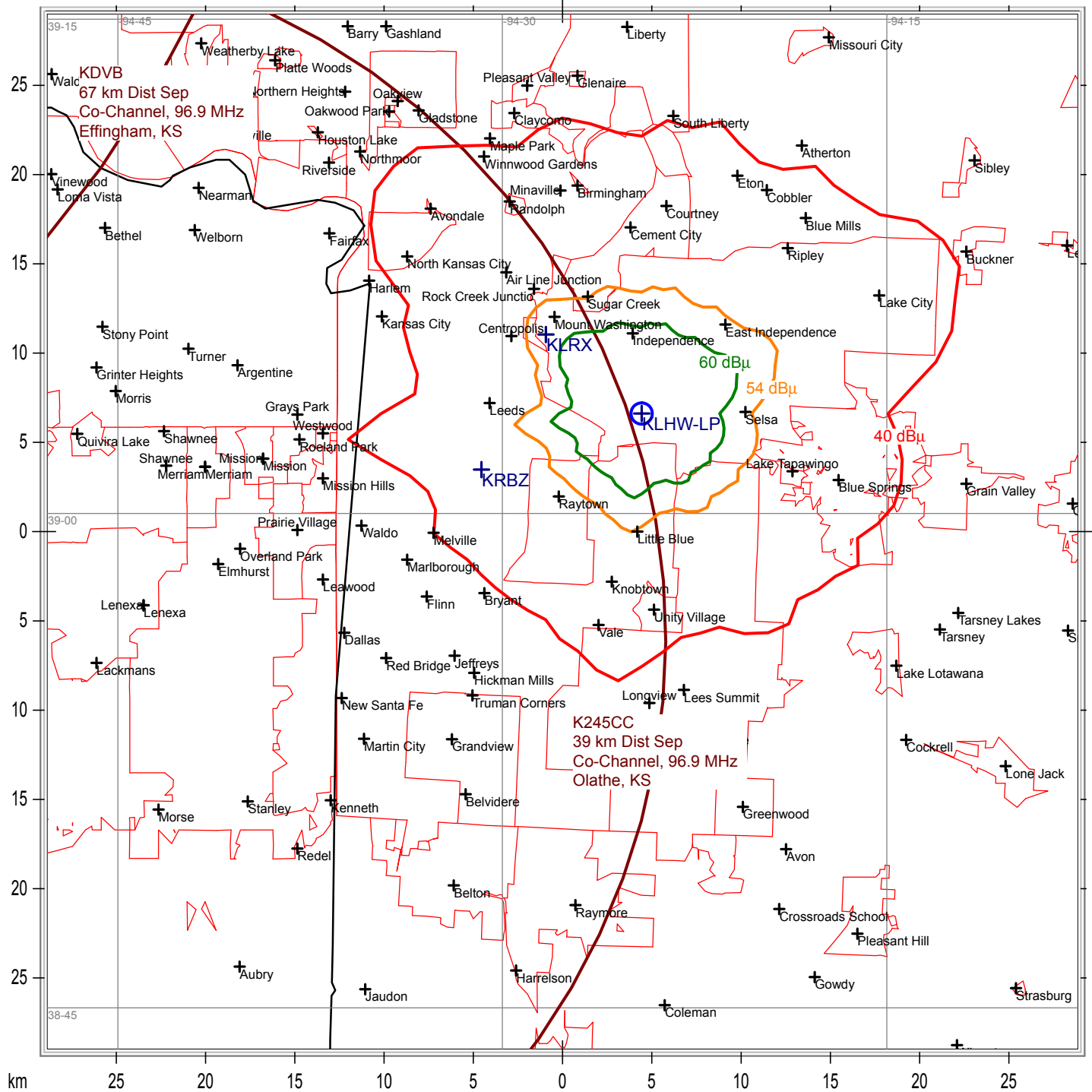
The current license for KLHW-LP is operating on channel 245, which is a co-channel to the licensed K245CC (Facility ID 140359, Olathe, KS). While the current license for KLHW-LP meets the LPFM distance separation requirements for K245CC by 0.7 km, fringe interference still exists. The channel change to channel 213 will expand the distance between KLHW-LP and any co-channel distance separation contour by an additional 5.7 km reducing any unwanted interference.

§73.870(a)(1) of the Commission's Rules state that "Changes in frequency to adjacent or IF frequencies or, upon a technical showing of reduced interference, to any frequency" may be made in a minor modification application. The Proposed channel change to 213 reduces co-channel interference caused to K245CC by removing KLHW-LP from the distance separation contour of K245CC. Currently, the population receiving interference free transmission from KLHW-LP is approximately 202,519. With the move to channel 213 (90.5 MHz) and relocating KLHW-LP the population receiving interference free transmission would be improved to approximately 257,285. Interference free reception would be improved to an additional 54,766 population for KLHW-LP. MPCS believes this better meets the needs of the local community and therefore, is a more efficient use of available spectrum.

Exhibit 11B Page 2
Multicultural Professional Counseling Services
Reduction of Interference
Kansas City, MO

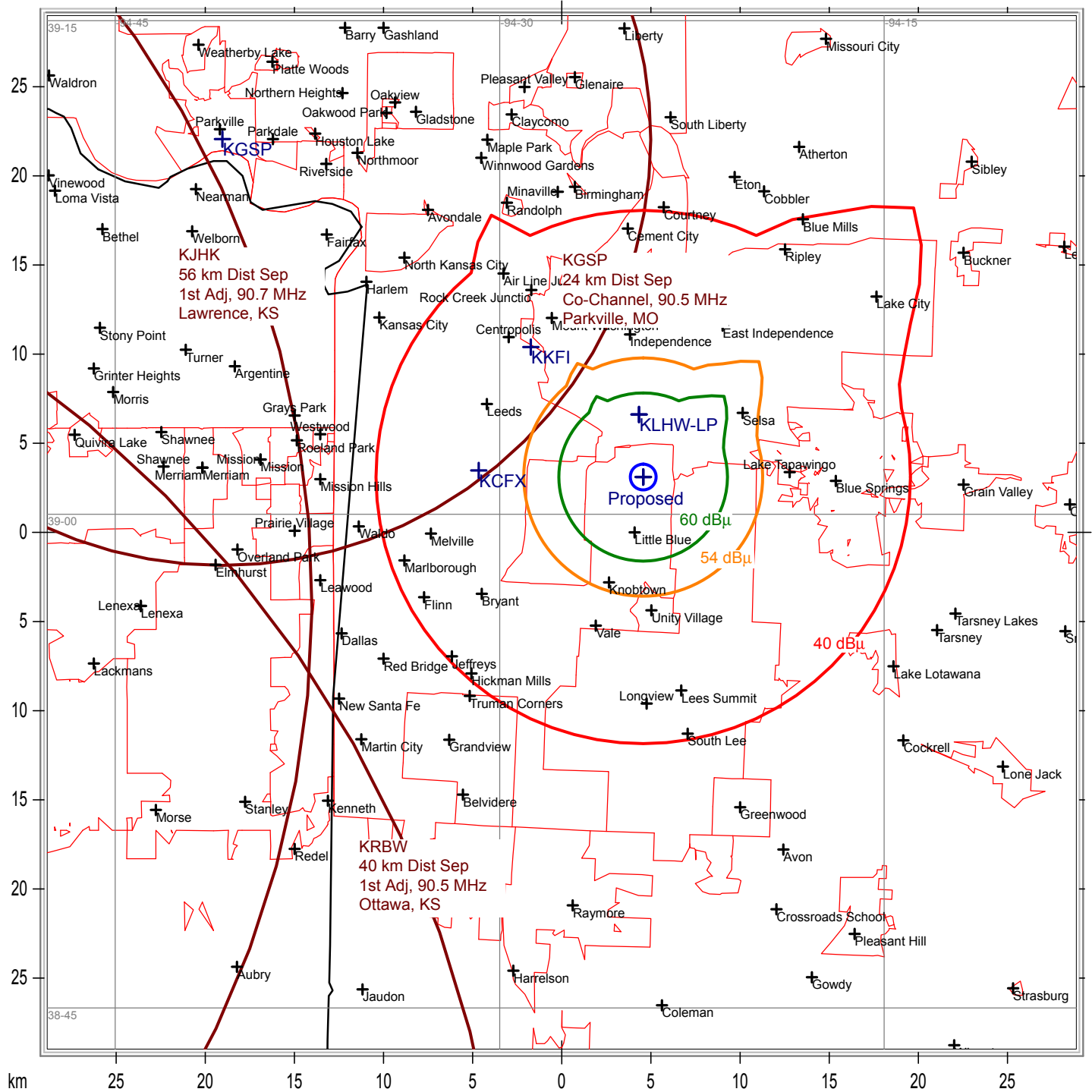
This minor change application for KLHW-LP to a non-adjacent channel is due to the showing of reduction of interference in accordance with §73.870 (a) (1). The FCC has previously ruled in favor of this for Core Radio Ministry Inc. Minor Change Application, BPL-20160201AEW. Therefore, Multicultural Professional Counseling Services respectfully requests a change to a non-adjacent channel in this instant application. The public interest will be served by the continuation of service from KLHW-LP that the public has come to rely on and expect.

Showing of Distance Separation - 96.9 MHz (Ch. 245)



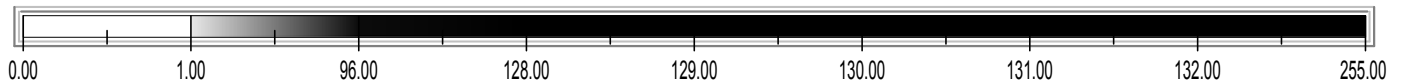
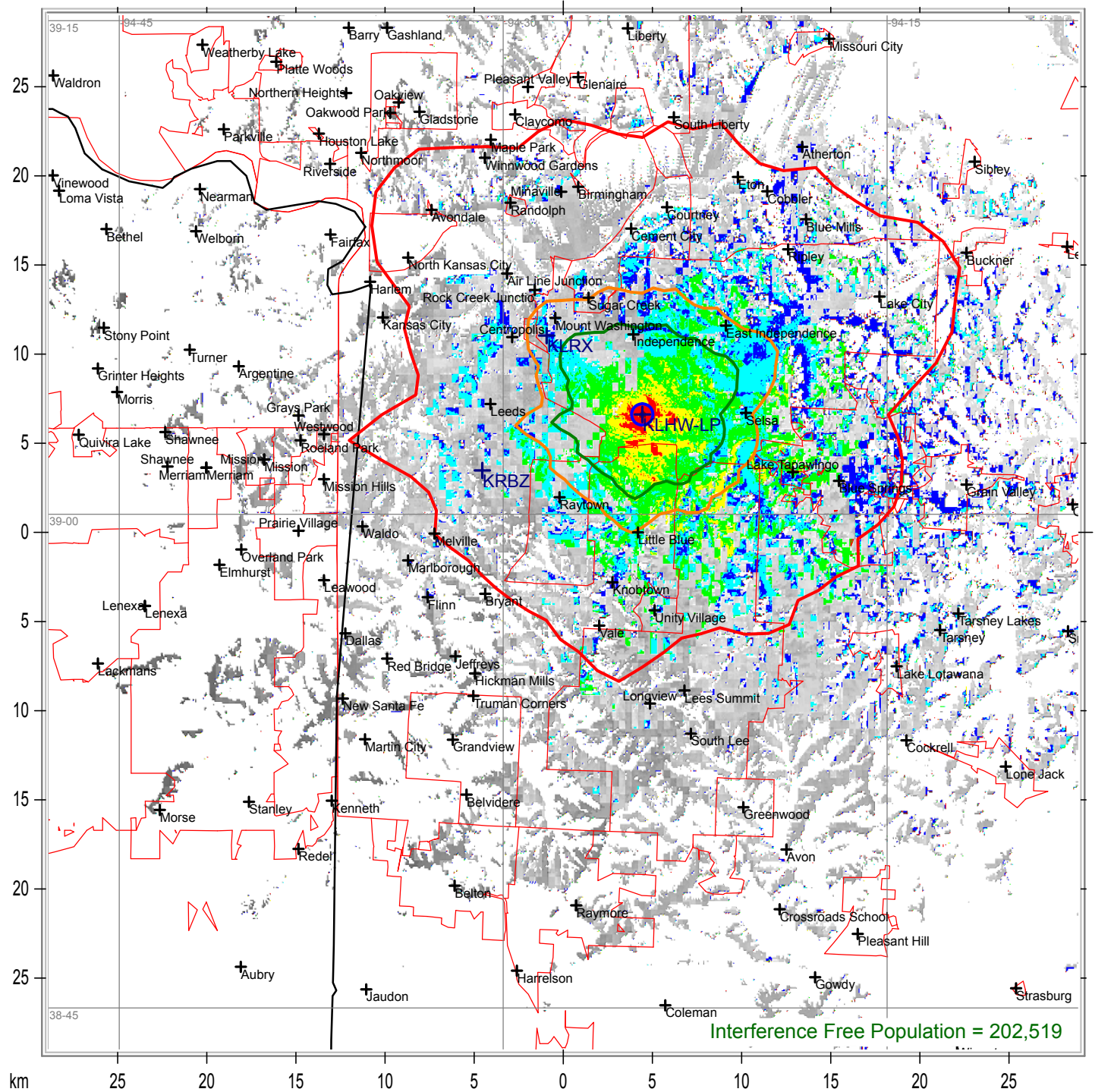
State Borders City Borders Lat/Lon Grid

Showing of Distance Separation - 90.5 MHz (Ch. 213)



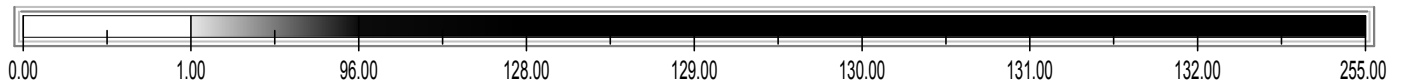
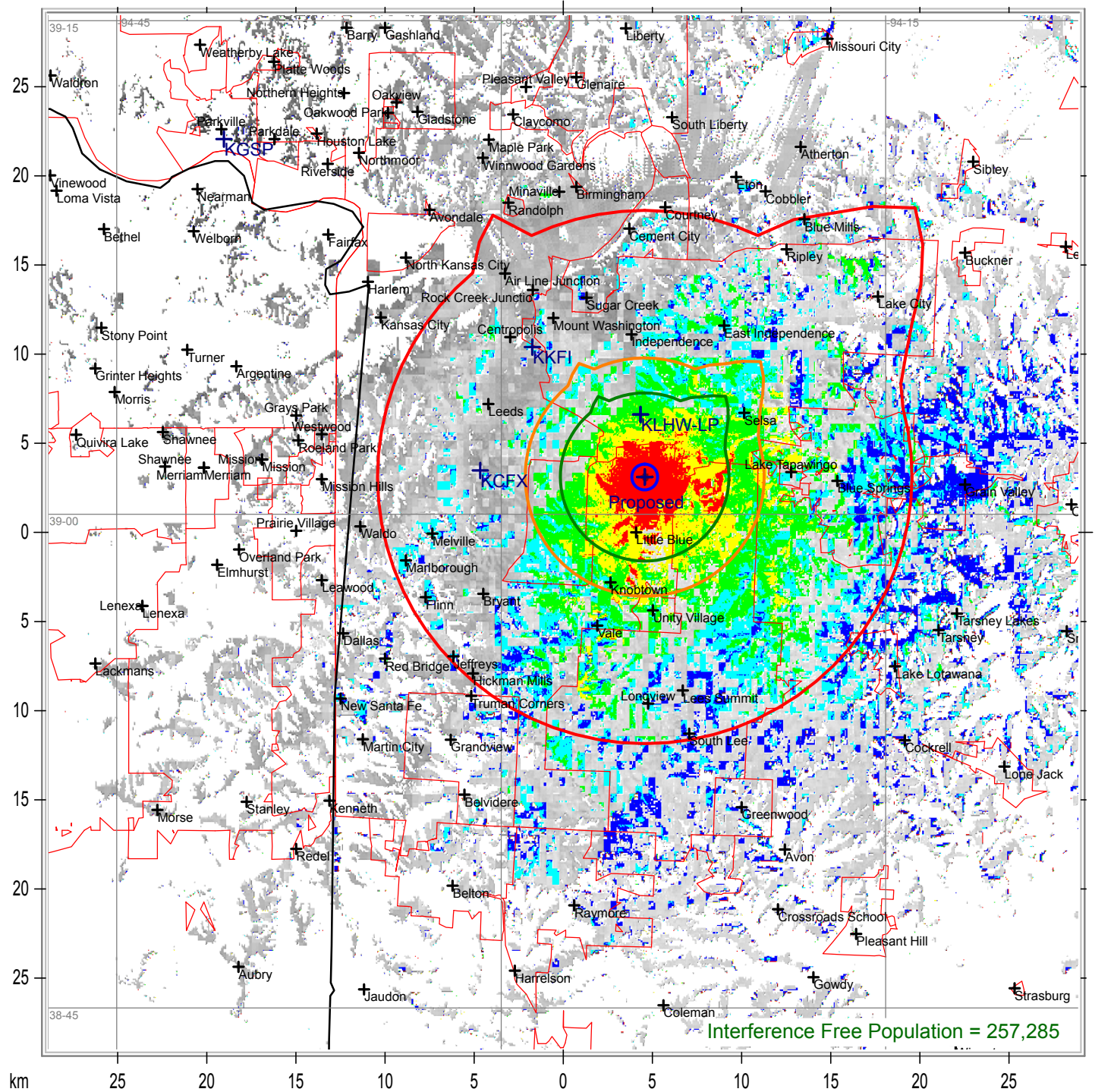
State Borders City Borders Lat/Lon Grid

Interference Free Reception - 96.9 MHz (Ch. 245)



State Borders City Borders Lat/Lon Grid

Interference Free Reception - 90.5 MHz (Ch. 213)



State Borders City Borders Lat/Lon Grid