

KESSLER AND GEHMAN ASSOCIATES, INC.

507 NW 60th St. Ste C, Gainesville, FL 32607

KZTC-LP

Engineering Technical Statement

San Diego, CA

ENGINEERING TECHNICAL STATEMENT OF RYAN WILLOUR OF THE FIRM OF
KESSLER AND GEHMAN ASSOCIATES, INC., CONSULTING ENGINEERS IN
CONNECTION WITH A DIGITAL FLASHCUT MINOR MODIFICATION
APPLICATION TO A LICENSED ANALOG LOW POWER TELEVISION BROADCAST
STATION KZTC-LP, FCC FILE NUMBER BLTVL-20100629AAS
CIVIC LIGHT, INC
SAN DIEGO, CALIFORNIA

NARRATIVE STATEMENT

This firm has been retained by Civic Light, Inc. ("CLI") to prepare engineering studies and the engineering portion of FCC Form 346 for a digital flashcut minor modification application to the above referenced licensed low power television broadcast facility.

This application proposes to make the following physical changes to FCC file number BLTVL-20100629AAS:

- Reduce the overall ERP from 3kW to 1.5kW.
- Change the emissions designator from analog to digital using a full service mask.
- Change the broadcast antenna from a Dielectric THA-C1-5/5-1 to a Dielectric THA-C1-4/4-1 which has an identical azimuth pattern but a fuller elevation pattern.

The proposed facility will have a coverage contour which overlaps the licensed facility and completely serves the community of license as demonstrated in Exhibit 13.5.

KESSLER AND GEHMAN ASSOCIATES, INC.

507 NW 60th St. Ste C, Gainesville, FL 32607

KZTC-LP

Engineering Technical Statement

San Diego, CA

ENGINEERING EXHIBITS

In carrying out the engineering studies the following attached exhibits were prepared:

1. Proposed engineering specifications (Exhibit 13.1)
2. Elevation drawing of the antenna system (Exhibit 13.2)
3. Antenna azimuth and elevation patterns (Exhibit 13.3)
4. USGS 7.5 minute topographic quadrangle showing the proposed transmitter location and coordinate lines (Exhibit 13.4)
5. Map demonstrating the predicted and licensed coverage contours (Exhibit 13.5)
6. Exhibits demonstrating interference compliance (Exhibit 13.6)

INTERFERENCE ANALYSIS

The following stations were analyzed for potential interference:

Chan	Call	City/State	Dist	Status	Application	Ref. No.
07	K07YJ	BULLHEAD CITY AZ	330.8	LIC	BLTTV	-20060525AAZ
07	K07YJ	BULLHEAD CITY AZ	330.8	CP	BDFCDTV	-20090824AHY
07	NEW	YUMA AZ	228.9	APP	BNPDVL	-20100524AAX
07	K07IH	BAKER CA	286.4	LIC	BLTTV	-3751
07	K08MM	BAKERSFIELD CA	315.1	CP	BDISDVA	-20090729ACY
07	K36FO	CALEXICO CA	153.4	CP MOD	BMPTVL	-20100525ACK
07	KABC-TV	LOS ANGELES CA	169.1	CP MOD	BMPCDT	-20090330AFV
07	NEW	NORTH PALM SPRINGS CA	109.2	APP	BNPDVL	-20090825BHP
07	NEW	PALM SPRINGS CA	107.6	APP	BNPDVL	-20090825BGC
07	K07NH	RIDGECREST, ETC. CA	300.6	LIC	BLTTV	-4569
07	K07TA	SANTA MARIA CA	374.4	CP	BDFCDVA	-20061030ADS
07	K07TA	SANTA MARIA CA	364.0	LIC	BLTVA	-20090903ACD
07	K07JC	INDIAN SPRINGS NV	416.8	LIC	BLTTV	-20090604AAZ
07	KLAS-TV	LAS VEGAS NV	371.2	LIC	BLCDT	-20041202ACC
08	NEW	CALEXICO CA	141.6	APP	BMJADVL	-20100520ADH
08	KILA-LP	CHERRY VALLEY CA	109.7	CP	BDISDVL	-20090630AHK
08	KILA-LP	CHERRY VALLEY CA	109.7	APP	BSTA	-20100114ADQ
08	KVPS-LP	INDIO CA	107.5	CP	BPTVL	-20080908AAL
08	KVPS-LP	INDIO CA	112.2	LIC	BLTVL	-20020122AAB
08	KFLA-LD	LOS ANGELES CA	169.1	LIC	BLDVL	-20071001AAC
08	KFLA-LD	LOS ANGELES CA	169.9	APP	BSTA	-20110808AAA
08	K08IA	NEWBERRY SPRINGS CA	204.6	LIC	BLTTV	-5051
08	KFMB-TV	SAN DIEGO CA	32.1	LIC	BLCDT	-20100520ACV

KESSLER AND GEHMAN ASSOCIATES, INC.

507 NW 60th St. Ste C, Gainesville, FL 32607

KZTC-LP

San Diego, CA

Engineering Technical Statement

As demonstrated in Exhibit 13.6, none of the stations above are predicted to receive non-compliant interference.

DECLARATION OF ENGINEER

The foregoing statement and the report regarding the aforementioned engineering work are true and correct to the best of my knowledge. Executed on August 26, 2011.

KESSLER AND GEHMAN ASSOCIATES, INC.



Ryan Wilhour

Consulting Engineer

ENGINEERING SPECIFICATIONS

A. Transmitter Site (NAD 27):

N. Latitude: 33° 00' 32"

W. Longitude: 116° 58' 16"

FCC Tower Registration Number:

1026468

B. Proposed Facility:

Channel: 7

Frequency: 174-180 MHz

Emission Mask: Full Service

C. Antenna and Other Elevations:

Height of Site Above Mean Sea Level (AMSL) 880 m

Overall Height of Structure Above Ground 28 m

(including all appurtenances)

Overall Height of Structure Above Mean Sea Level 908 m

(including all appurtenances)

Average Terrain 346 m

Effective Height of Antenna Above Ground 15 m

Effective Height of Antenna Above Average Terrain 549 m

Effective Height of Antenna Above Mean Sea Level 895 m

D. Antenna Parameters - Horizontal Polarization:

Antenna Make Dielectric

Antenna Model THA-C1-4/4-1

Maximum Antenna Gain in Beam Maximum 13.48 dB

Transmitter Power Output 83 W

System Loss 0.92 dB

Maximum Effective Radiated Power 1.76 dBkW

In Beam Maximum 1.5 kW

KESSLER & GEHMAN

TELECOMMUNICATIONS CONSULTING ENGINEERS

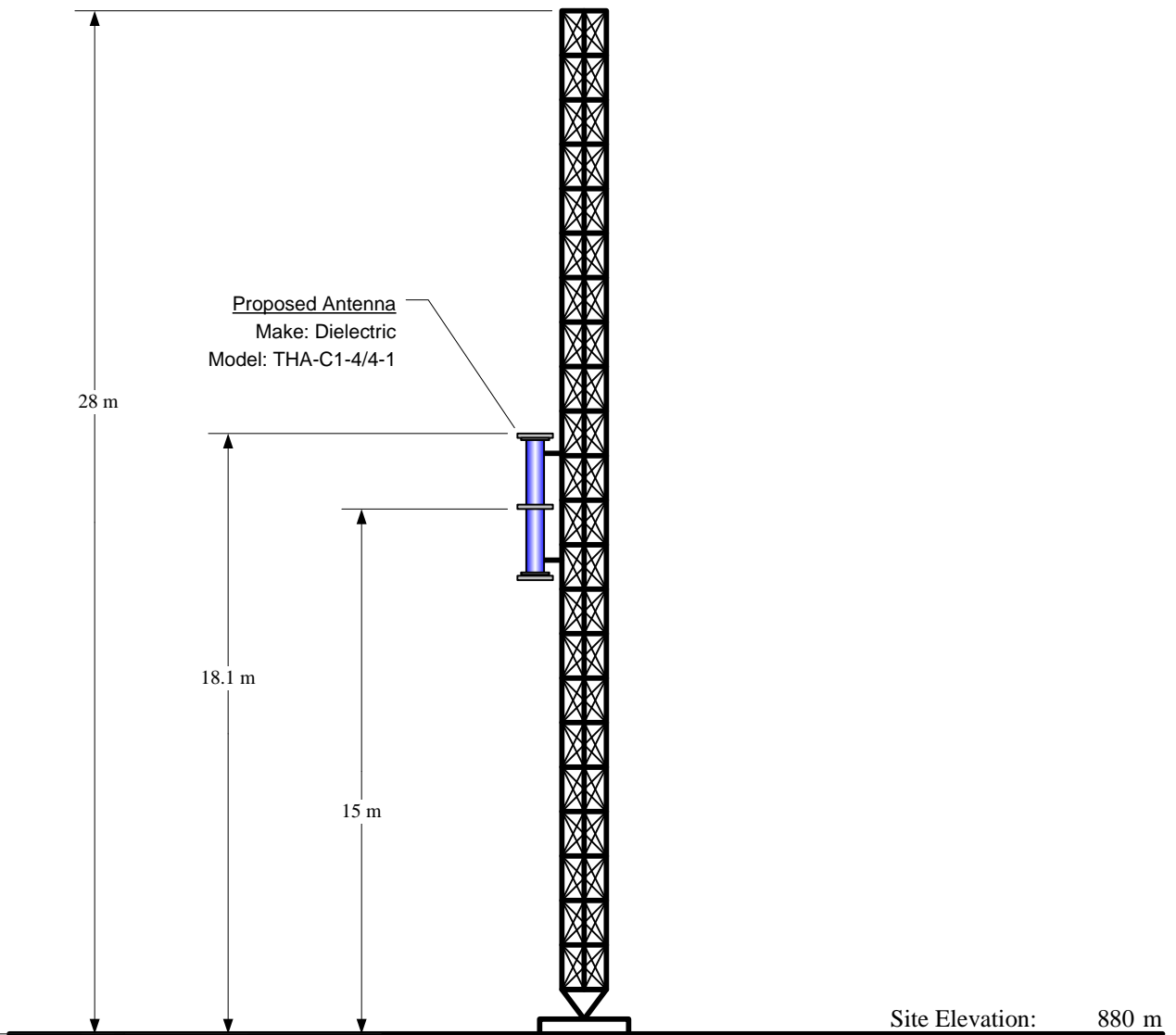
507 N.W. 60th Street, Suite C
Gainesville, Florida 32607

KZTC-LP

SAN DIEGO, CALIFORNIA

20110826

EXHIBIT 13.1



Overall Height AGSL:	28 m
Overall Height AMSL:	908 m
Radiation Center AGSL:	15.0 m
Radiation Center AMSL:	895 m
Radiation Center HAAT:	549 m
Average Terrain:	346 m

NAD 27 Coordinates:	
N. Latitude:	33° 00' 32"
N. Longitude:	116° 58' 16"

FCC Tower Registration Number: 1026468

NOTE: NOT TO SCALE

KESSLER & GEHMAN

TELECOMMUNICATIONS CONSULTING ENGINEERS
507 N.W. 60th Street, Suite C
Gainesville, Florida 32607

KZTC-LP

SAN DIEGO, CALIFORNIA

20110826

EXHIBIT 13.2

KZTC-LP

SAN DIEGO, CALIFORNIA

TABULATION OF RELATIVE FIELD FOR PROPOSED DIRECTIONAL ANTENNA

<u>AZIMUTH</u>	<u>RELATIVE FIELD</u>	<u>AZIMUTH</u>	<u>RELATIVE FIELD</u>
N000°E	0.060	N180°E	0.586
N010°E	0.040	N190°E	0.750
N020°E	0.025	N200°E	0.883
N030°E	0.015	N210°E	0.970
N040°E	0.005	N220°E	1.000
N050°E	0.015	N230°E	0.970
N060°E	0.025	N240°E	0.883
N070°E	0.040	N250°E	0.750
N080°E	0.060	N260°E	0.586
N090°E	0.080	N270°E	0.412
N100°E	0.085	N280°E	0.249
N110°E	0.070	N290°E	0.116
N120°E	0.060	N300°E	0.020
N130°E	0.020	N310°E	0.020
N140°E	0.020	N320°E	0.060
N150°E	0.116	N330°E	0.070
N160°E	0.249	N340°E	0.085
N170°E	0.412	N350°E	0.080

MAXIMUM OF 1.000 AT N220°E AND 0.085 AT N100°E AND N340°E
 MINIMUM OF 0.020 AT N303°E AND N138°E AND 0.005 AT N040°E

KESSLER & GEHMAN

TELECOMMUNICATIONS CONSULTING ENGINEERS

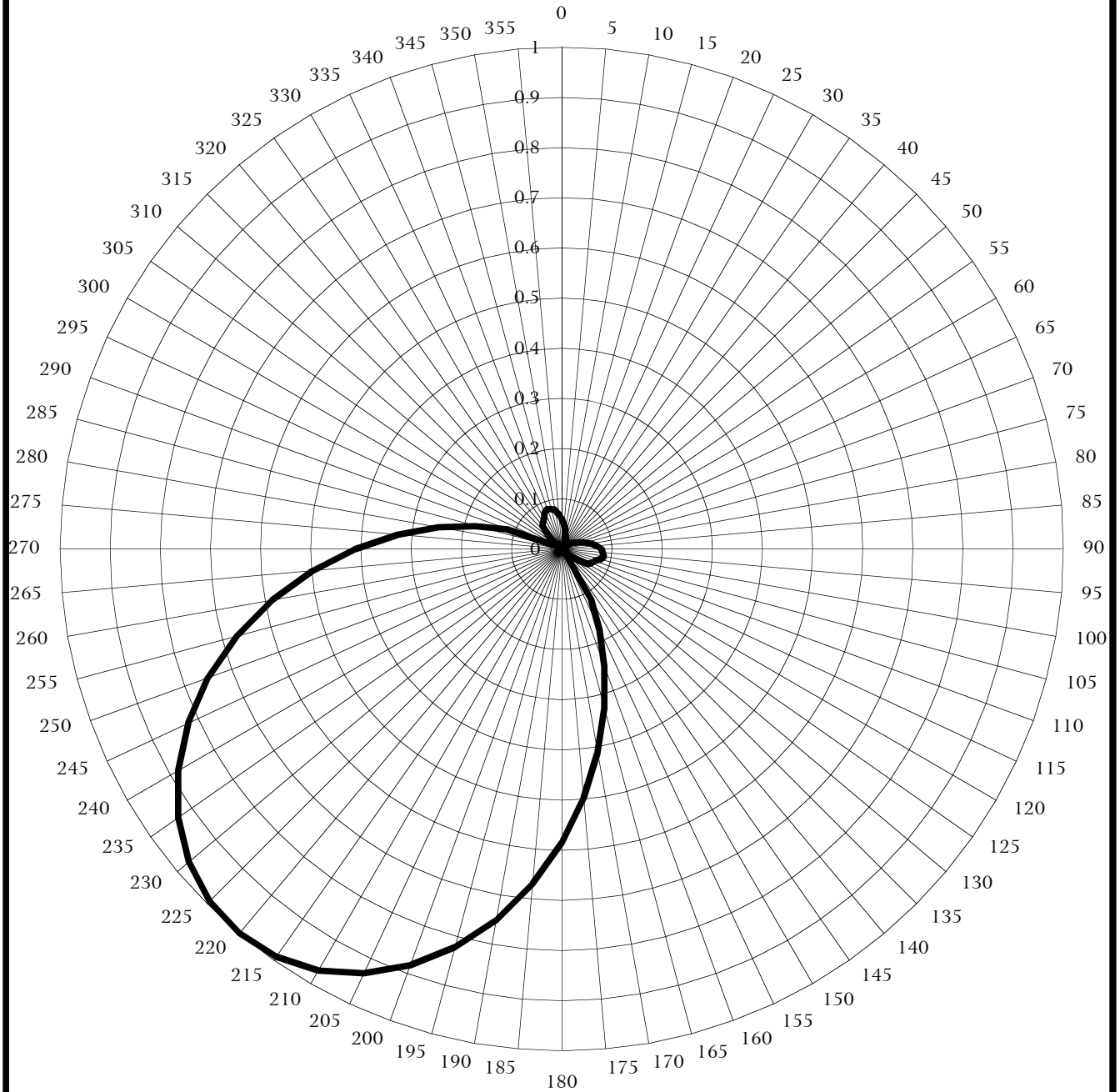
507 N.W. 60th Street, Suite C
 Gainesville, Florida 32607

KZTC-LP
SAN DIEGO, CALIFORNIA

20110826

EXHIBIT 13.3.1

RELATIVE FIELD AZIMUTH PATTERN



DIELECTRIC - THA-C1-4/4-1
ORIENTED WITH BEAM MAXIMA AT 220°
MAXIMUM AZIMUTH GAIN: 7.24 DBI

KESSLER & GEHMAN

TELECOMMUNICATIONS CONSULTING ENGINEERS

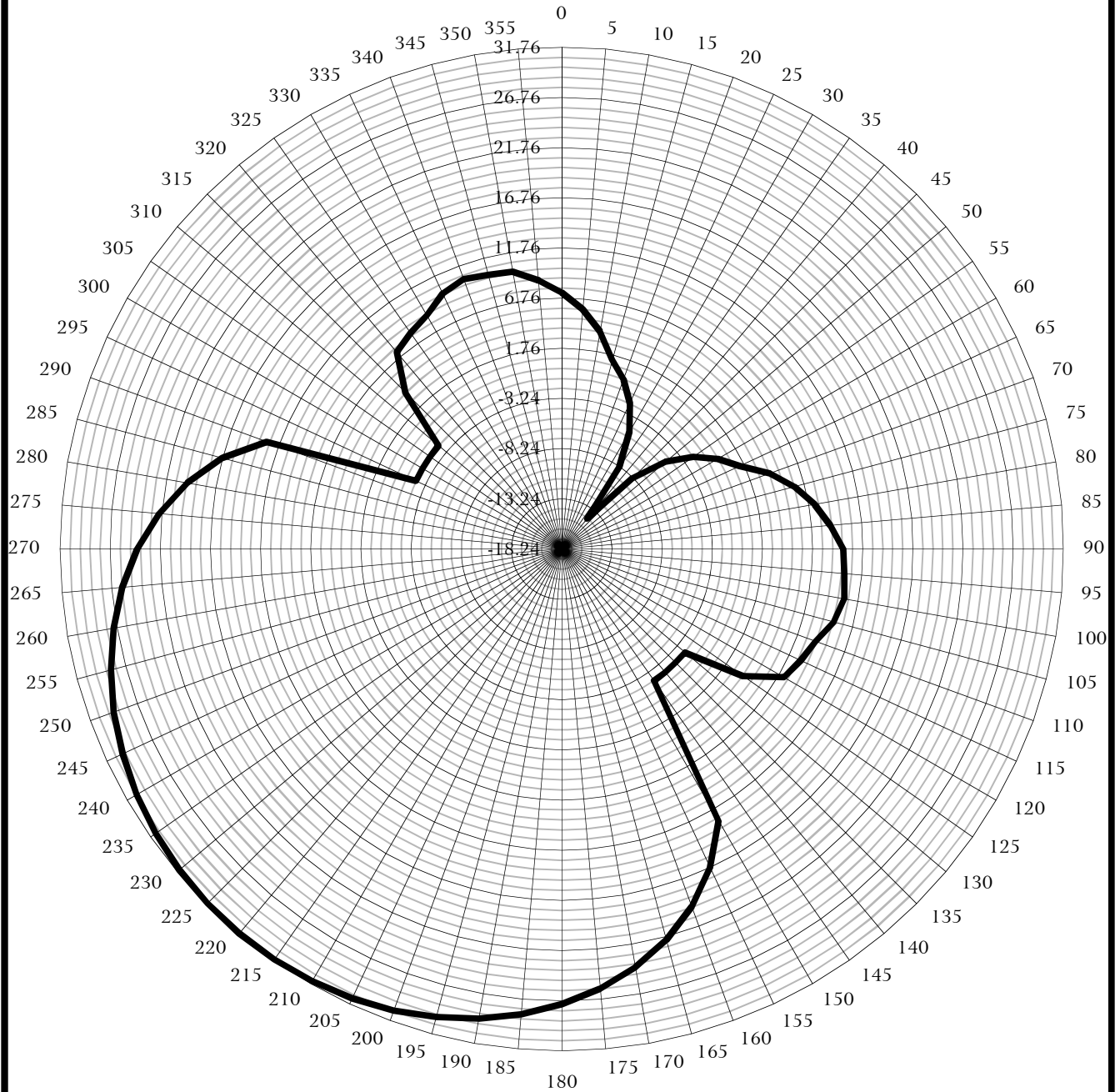
507 N.W. 60th Street, Suite C
Gainesville, Florida 32607

KZTC-LP
SAN DIEGO, CALIFORNIA

20110826

EXHIBIT 13.3.2

ERP - dBW



DIELECTRIC - THA-C1-4/4-1
ORIENTED WITH BEAM MAXIMA AT 220°
MAXIMUM AZIMUTH GAIN: 7.24 DBI

KESSLER & GEHMAN

TELECOMMUNICATIONS CONSULTING ENGINEERS

507 N.W. 60th Street, Suite C
Gainesville, Florida 32607

KZTC-LP
SAN DIEGO, CALIFORNIA

20110826

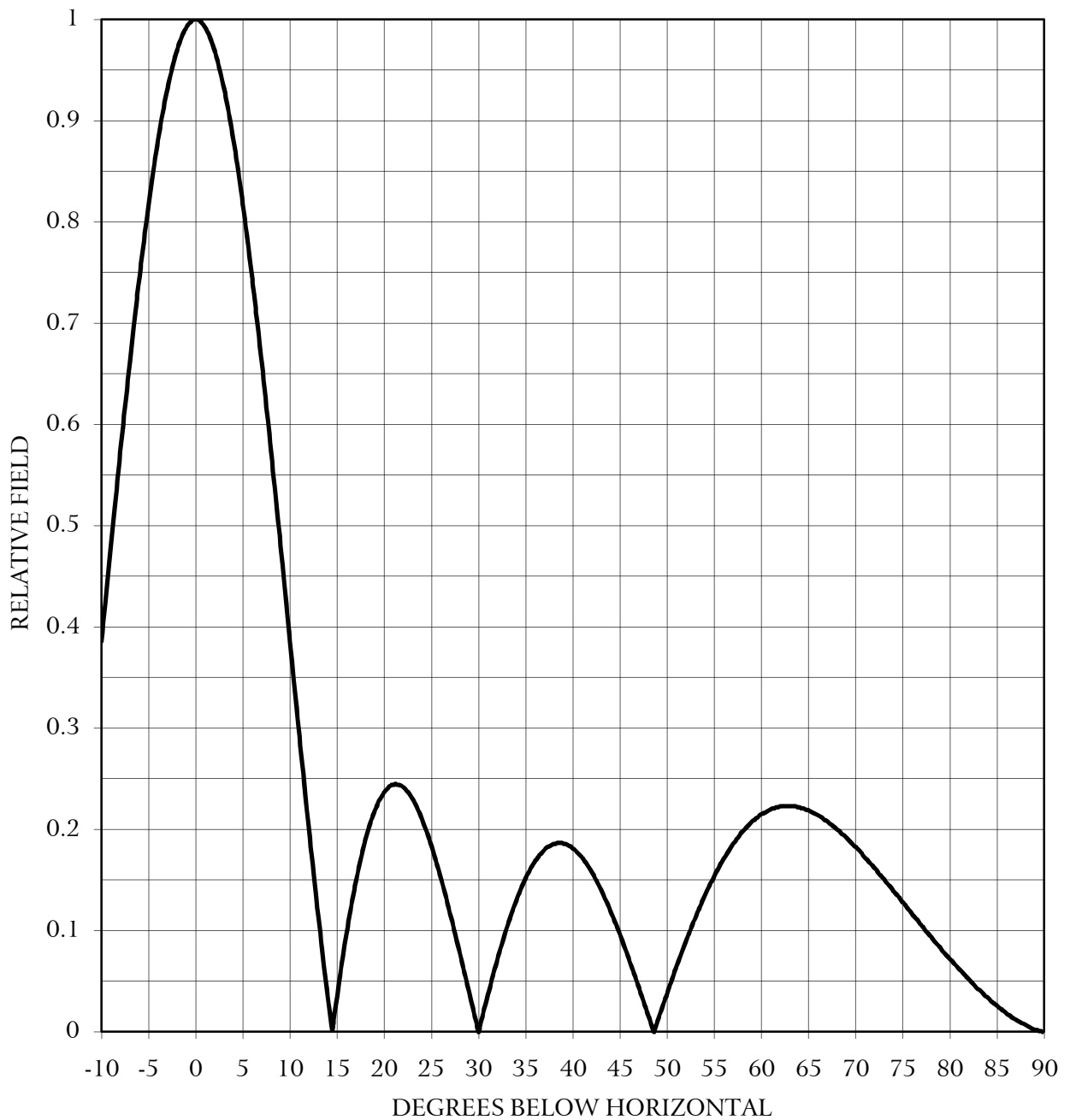
EXHIBIT 13.3.3

ELEVATION PATTERN

DIELECTRIC - THA-C1-4/4-1

Elevation Gain at Main Lobe 4.2 (6.23 dB)
Elevation Gain at Horizontal 4.2 (6.23 dB)

Beam Tilt 0.0 deg
Frequency 177.0 MHz



KESSLER & GEHMAN
TELECOMMUNICATIONS CONSULTING ENGINEERS
507 N.W. 60th Street, Suite C

KZTC-LP
SAN DIEGO, CALIFORNIA

20110826

EXHIBIT 13.3.4

Population Database: 2000 US Census (PL)

Total Population Within Contour: 2,334,216
Total Housing Units Within Contour: 869,771
Total Area Within Contour: 6352.21 sq. km

Scale 1:688,829

0 9 18 27 km

KZTC-LP-Prop

Proposed
Latitude: 33-00-32 N
Longitude: 116-58-16 W
ERP: 1.50 kW
Channel: 7
AMSL Height: 895.0 m
Horiz. Pattern: Directional
Prop Model: None

KZTC-LP

BLTVL20100629AAS
Latitude: 33-00-32 N
Longitude: 116-58-16 W
ERP: 3.00 kW
Channel: 07-
AMSL Height: 895.0 m
Horiz. Pattern: Directional
Prop Model: None

Population Database: 2000 US Census (PL)

Total Population Within Contour: 1,765,514
Total Housing Units Within Contour: 676,632
Total Area Within Contour: 1969.06 sq. km

■ KZTC-LP PROPOSED 48 DBU COVERAGE CONTOUR
■ KZTC-LP LICENSED 68 DBU COVERAGE CONTOUR

EXHIBIT 13.5

KESSLER AND GEHMAN ASSOCIATES, INC.

507 NW 60th St. Ste C, Gainesville, FL 32607

Allocation Analysis

KZTC-LP
San Diego, CA

Percent allowed new interference: 0.500
Percent allowed new interference to non Class A LPTV: 2.000
Census data selected 2000
Data Base Selected
./data_files/pt_tvdb.sff
TV INTERFERENCE and SPACING ANALYSIS PROGRAM

Date: 08-23-2011 Time: 07:59:13

Record Selected for Analysis

KZTC-LP USERRECORD-01 SAN DIEGO CA US
Channel 07 ERP 1.5 kW HAAT 548. m RCAMSL 00895 m FULL SERVICE MASK
Latitude 033-00-32 Longitude 0116-58-16
Status APP Zone 1 Border Site number: 01
Dir Antenna Make usr Model USRPAT01 Beam tilt N Ref Azimuth 0.
Last update Cutoff date Docket
Comments
Applicant

Cell Size for Service Analysis 1.0 km/side

Distance Increments for Longley-Rice Analysis 1.00 km

Not full service station
Service Class = LD
Maximum height/power limits not checked

Site number	1			
Azimuth	ERP	HAAT	48.0 dBu F(50,90)	
(Deg)	(kW)	(m)	(km)	
0.0	0.005	505.4	27.2	
45.0	0.000	451.1	8.1	
90.0	0.010	417.4	27.2	
135.0	0.001	419.2	13.1	
180.0	0.515	563.1	63.5	
225.0	1.455	663.7	75.3	
270.0	0.255	686.8	61.4	
315.0	0.002	674.9	26.8	

Contour Overlap to Proposed Station

Contour Overlap Evaluation to Proposed Station Complete

NO LANDMOBILE SPACING VIOLATIONS FOUND

Checks to Site Number 01

Proposed facility OK to FCC Monitoring Stations

Proposed facility OK toward West Virginia quiet zone

KESSLER AND GEHMAN ASSOCIATES, INC.

507 NW 60th St. Ste C, Gainesville, FL 32607

KZTC-LP

San Diego, CA

Allocation Analysis

Proposed facility OK toward Table Mountain

Proposed facility is beyond the Canadian coordination distance

Proposed facility is within the Mexican coordination distance

Distance to border = 51.0km

Proposed station is OK toward AM broadcast stations

Start of Interference Analysis

Channel	Proposed Station Call	City/State	ARN
07	KZTC-LP	SAN DIEGO CA	USERRECORD01

Stations Potentially Affected by Proposed Station

Chan	Call	City/State	Dist(km)	Status	Application	Ref. No.
07	K07YJ	BULLHEAD CITY AZ	330.8	LIC	BLTTV	-20060525AAZ
07	K07YJ	BULLHEAD CITY AZ	330.8	CP	BDFCDTV	-20090824AHY
07	NEW	YUMA AZ	228.9	APP	BNPDVL	-20100524AAX
07	K07IH	BAKER CA	286.4	LIC	BLTTV	-3751
07	K08MM	BAKERSFIELD CA	315.1	CP	BDISDVA	-20090729ACY
07	K36FO	CALEXICO CA	153.4	CP MOD	BMPTVL	-20100525ACK
07	KABC-TV	LOS ANGELES CA	169.1	CP MOD	BMPCDT	-20090330AFV
07	NEW	NORTH PALM SPRINGS CA	109.2	APP	BNPDVL	-20090825BHP
07	NEW	PALM SPRINGS CA	107.6	APP	BNPDVL	-20090825BGC
07	K07NH	RIDGECREST, ETC. CA	300.6	LIC	BLTTV	-4569
07	K07TA	SANTA MARIA CA	374.4	CP	BDFCDVA	-20061030ADS
07	K07TA	SANTA MARIA CA	364.0	LIC	BLTVA	-20090903ACD
07	K07JC	INDIAN SPRINGS NV	416.8	LIC	BLTTV	-20090604AAZ
07	KLAS-TV	LAS VEGAS NV	371.2	LIC	BLCDT	-20041202ACC
08	NEW	CALEXICO CA	141.6	APP	BMJADV	-20100520ADH
08	KILA-LP	CHERRY VALLEY CA	109.7	CP	BDISDVL	-20090630AHK
08	KILA-LP	CHERRY VALLEY CA	109.7	APP	BSTA	-20100114ADQ
08	KVPS-LP	INDIO CA	107.5	CP	BPTVL	-20080908AAL
08	KVPS-LP	INDIO CA	112.2	LIC	BLTVL	-20020122AAB
08	KFLA-LD	LOS ANGELES CA	169.1	LIC	BLDVL	-20071001AAC
08	KFLA-LD	LOS ANGELES CA	169.9	APP	BSTA	-20110808AAA
08	K08IA	NEWBERRY SPRINGS CA	204.6	LIC	BLTTV	-5051
08	KFMB-TV	SAN DIEGO CA	32.1	LIC	BLCDT	-20100520ACV

Analysis of Interference to Affected Station 1

Analysis of current record

Channel	Call	City/State	Application	Ref. No.
07	K07YJ	BULLHEAD CITY AZ	BLTTV	-20060525AAZ

Stations Potentially Affecting This Station

Chan	Call	City/State	Dist(km)	Status	Application	Ref. No.
07	KAZT-TV	PRESCOTT AZ	229.7	LIC	BLCDT	-20090612AEO
07	K07IH	BAKER CA	126.5	LIC	BLTTV	-3751
07	KABC-TV	LOS ANGELES CA	338.9	CP MOD	BMPCDT	-20090330AFV
07	KLAS-TV	LAS VEGAS NV	92.6	LIC	BLCDT	-20041202ACC
08	K09KG	BULLHEAD CITY AZ	0.0	CP	BDISDTV	-20091030AGY
07	KZTC-LP	SAN DIEGO CA	330.8	APP	USERRECORD-01	

Proposal causes no interference

KESSLER AND GEHMAN ASSOCIATES, INC.

507 NW 60th St. Ste C, Gainesville, FL 32607

Allocation Analysis

KZTC-LP
San Diego, CA

#####

Analysis of Interference to Affected Station 2

Analysis of current record

Channel	Call	City/State	Application Ref. No.
07	K07YJ	BULLHEAD CITY AZ	BDFCDTV -20090824AHY

Stations Potentially Affecting This Station

Chan	Call	City/State	Dist(km)	Status	Application Ref. No.
07	KAZT-TV	PRESCOTT AZ	229.7	LIC	BLCDT -20090612AEO
07	K07IH	BAKER CA	126.5	LIC	BLTTV -3751
07	KABC-TV	LOS ANGELES CA	338.9	CP MOD	BMPCDT -20090330AFV
07	KLAS-TV	LAS VEGAS NV	92.6	LIC	BLCDT -20041202ACC
08	K09KG	BULLHEAD CITY AZ	0.0	CP	BDISDTV -20091030AGY
07	KZTC-LP	SAN DIEGO CA	330.8	APP	USERRECORD-01

Proposal causes no interference

#####

Analysis of Interference to Affected Station 3

Analysis of current record

Channel	Call	City/State	Application Ref. No.
07	NEW	YUMA AZ	BNPDVL -20100524AAX

Stations Potentially Affecting This Station

Chan	Call	City/State	Dist(km)	Status	Application Ref. No.
07	KAZT-TV	PRESCOTT AZ	320.5	LIC	BLCDT -20090612AEO
07	K36FO	CALEXICO CA	76.6	CP MOD	BMPTVL -20100525ACK
07	KABC-TV	LOS ANGELES CA	369.9	CP MOD	BMPCDT -20090330AFV
07	KLAS-TV	LAS VEGAS NV	369.9	LIC	BLCDT -20041202ACC
07	KZTC-LP	SAN DIEGO CA	228.9	APP	USERRECORD-01

Proposal causes no interference

#####

Analysis of Interference to Affected Station 4

Analysis of current record

Channel	Call	City/State	Application Ref. No.
07	K07IH	BAKER CA	BLTTV -3751

Stations Potentially Affecting This Station

Chan	Call	City/State	Dist(km)	Status	Application Ref. No.
07	K07YJ	BULLHEAD CITY AZ	126.5	LIC	BLTTV -20060525AAZ
07	KAZT-TV	PRESCOTT AZ	356.0	LIC	BLCDT -20090612AEO
07	KAIL	FRESNO CA	363.2	APP	BPCDT -20100401ABQ
07	KAIL	FRESNO CA	363.3	LIC	BLCDT -20021002ABH
07	KABC-TV	LOS ANGELES CA	237.3	CP MOD	BMPCDT -20090330AFV
07	K07NH	RIDGECREST, ETC. CA	154.1	LIC	BLTTV -4569
07	K07JC	INDIAN SPRINGS NV	131.4	LIC	BLTTV -20090604AAZ
07	KLAS-TV	LAS VEGAS NV	97.6	LIC	BLCDT -20041202ACC
07	KZTC-LP	SAN DIEGO CA	286.4	APP	USERRECORD-01

KESSLER AND GEHMAN ASSOCIATES, INC.

507 NW 60th St. Ste C, Gainesville, FL 32607

Allocation Analysis

KZTC-LP
San Diego, CA

Proposal causes no interference

#####

Analysis of Interference to Affected Station 5

Analysis of current record

Channel	Call	City/State	Application Ref. No.
07	K08MM	BAKERSFIELD CA	BDISDVA -20090729ACY

Stations Potentially Affecting This Station

Chan	Call	City/State	Dist(km)	Status	Application Ref. No.
07	KASC-CA	ATASCADERO CA	179.0	LIC	BLTVL -19990806JD
07	KAIL	FRESNO CA	191.9	APP	BPCDT -20100401ABQ
07	KAIL	FRESNO CA	192.0	LIC	BLCDT -20021002ABH
07	KABC-TV	LOS ANGELES CA	148.0	CP MOD	BMPCDT -20090330AFV
07	K07NH	RIDGECREST, ETC. CA	105.7	LIC	BLTTV -4569
07	K07TA	SANTA MARIA CA	143.9	LIC	BLTVA -20090903ACD
07	KLAS-TV	LAS VEGAS NV	338.4	LIC	BLCDT -20041202ACC
08	KFAZ-CA	FRESNO CA	94.8	CP	BDFCDVA -20080801ANV
08	KFLA-LD	LOS ANGELES CA	148.0	LIC	BLDVL -20071001AAC
07	KZTC-LP	SAN DIEGO CA	315.1	APP	USERRECORD-01

Proposal causes no interference

#####

Analysis of Interference to Affected Station 6

Analysis of current record

Channel	Call	City/State	Application Ref. No.
07	K36FO	CALEXICO CA	BMPTVL -20100525ACK

Stations Potentially Affecting This Station

Chan	Call	City/State	Dist(km)	Status	Application Ref. No.
07	KAZT-TV	PRESCOTT AZ	375.4	LIC	BLCDT -20090612AEO
07	NEW	YUMA AZ	76.6	APP	BNPDVL -20100524AAX
07	KABC-TV	LOS ANGELES CA	303.2	CP MOD	BMPCDT -20090330AFV
07	KLAS-TV	LAS VEGAS NV	364.8	LIC	BLCDT -20041202ACC
08	NEW	CALEXICO CA	11.8	APP	BMJADVL -20100520ADH
07	KZTC-LP	SAN DIEGO CA	153.4	APP	USERRECORD-01

Proposal causes no interference

#####

Analysis of Interference to Affected Station 7

Analysis of current record

Channel	Call	City/State	Application Ref. No.
07	KABC-TV	LOS ANGELES CA	BMPCDT -20090330AFV

Stations Potentially Affecting This Station

Chan	Call	City/State	Dist(km)	Status	Application Ref. No.
07	KAIL	FRESNO CA	339.4	APP	BPCDT -20100401ABQ
07	KAIL	FRESNO CA	339.5	LIC	BLCDT -20021002ABH
07	KLAS-TV	LAS VEGAS NV	334.8	LIC	BLCDT -20041202ACC

KESSLER AND GEHMAN ASSOCIATES, INC.

507 NW 60th St. Ste C, Gainesville, FL 32607

KZTC-LP
San Diego, CA

Allocation Analysis

08	KFMB-TV	SAN DIEGO CA	171.9	LIC	BLCDT	-20100520ACV
07	KZTC-LP	SAN DIEGO CA	169.1	APP	USERRECORD-01	

Total scenarios = 2

Result key: 1
Scenario 1 Affected station 7
Before Analysis

Results for: 7A CA LOS ANGELES BMPCDT 20090330AFV CP
HAAT 978.0 m, ATV ERP 28.7 kW

	POPULATION	AREA (sq km)
within Noise Limited Contour	16352473	52911.9
not affected by terrain losses	15958296	45952.7
lost to NTSC IX	0	0.0
lost to additional IX by ATV	153768	630.4
lost to ATV IX only	153768	630.4
lost to all IX	153768	630.4

Potential Interfering Stations Included in above Scenario 1

7A CA FRESNO	BLCDT	20021002ABH	LIC
7A NV LAS VEGAS	BLCDT	20041202ACC	LIC
8A CA SAN DIEGO	BLCDT	20100520ACV	LIC

After Analysis

Results for: 7A CA LOS ANGELES BMPCDT 20090330AFV CP
HAAT 978.0 m, ATV ERP 28.7 kW

	POPULATION	AREA (sq km)
within Noise Limited Contour	16352473	52911.9
not affected by terrain losses	15958296	45952.7
lost to NTSC IX	0	0.0
lost to additional IX by ATV	219567	1264.8
lost to ATV IX only	219567	1264.8
lost to all IX	219567	1264.8

Potential Interfering Stations Included in above Scenario 1

7A CA FRESNO	BLCDT	20021002ABH	LIC
7A NV LAS VEGAS	BLCDT	20041202ACC	LIC
8A CA SAN DIEGO	BLCDT	20100520ACV	LIC
7A CA SAN DIEGO	USERRECORD01		APP

Percent new IX = 0.4163%

Result key: 2
Scenario 2 Affected station 7
Before Analysis

Results for: 7A CA LOS ANGELES BMPCDT 20090330AFV CP
HAAT 978.0 m, ATV ERP 28.7 kW

	POPULATION	AREA (sq km)
within Noise Limited Contour	16352473	52911.9
not affected by terrain losses	15958296	45952.7
lost to NTSC IX	0	0.0
lost to additional IX by ATV	153754	618.6
lost to ATV IX only	153754	618.6
lost to all IX	153754	618.6

Potential Interfering Stations Included in above Scenario 2

7A CA FRESNO	BPCDT	20100401ABQ	APP
--------------	-------	-------------	-----

KESSLER AND GEHMAN ASSOCIATES, INC.

507 NW 60th St. Ste C, Gainesville, FL 32607

Allocation Analysis

KZTC-LP
San Diego, CA

7A NV LAS VEGAS	BLCDT	20041202ACC	LIC
8A CA SAN DIEGO	BLCDT	20100520ACV	LIC

After Analysis

Results for: 7A CA LOS ANGELES BMPCDT 20090330AFV CP
HAAT 978.0 m, ATV ERP 28.7 kW

	POPULATION	AREA (sq km)
within Noise Limited Contour	16352473	52911.9
not affected by terrain losses	15958296	45952.7
lost to NTSC IX	0	0.0
lost to additional IX by ATV	219553	1253.9
lost to ATV IX only	219553	1253.9
lost to all IX	219553	1253.9

Potential Interfering Stations Included in above Scenario 2

7A CA FRESNO	BPCDT	20100401ABQ	APP
7A NV LAS VEGAS	BLCDT	20041202ACC	LIC
8A CA SAN DIEGO	BLCDT	20100520ACV	LIC
7A CA SAN DIEGO	USERRECORD01		APP

Percent new IX = 0.4163%

Worst case new IX 0.4163% Scenario 1

#####

Analysis of Interference to Affected Station 8

Analysis of current record

Channel	Call	City/State	Application	Ref. No.
07	NEW	NORTH PALM SPRINGS CA	BNPDVL	-20090825BHP

Stations Potentially Affecting This Station

Chan	Call	City/State	Dist(km)	Status	Application	Ref. No.
07	KABC-TV	LOS ANGELES CA	144.1	CP MOD	BMPCDT	-20090330AFV
07	NEW	PALM SPRINGS CA	12.1	APP	BNPDVL	-20090825BGC
07	KLAS-TV	LAS VEGAS NV	263.1	LIC	BLCDT	-20041202ACC
08	KILA-LP	CHERRY VALLEY CA	68.0	CP	BDISDVL	-20090630AHK
08	KILA-LP	CHERRY VALLEY CA	68.0	APP	BSTA	-20100114ADQ
08	KVPS-LP	INDIO CA	12.0	CP	BPTVL	-20080908AAL
07	KZTC-LP	SAN DIEGO CA	109.2	APP	USERRECORD-01	

Proposal causes no interference

#####

Analysis of Interference to Affected Station 9

Analysis of current record

Channel	Call	City/State	Application	Ref. No.
07	NEW	PALM SPRINGS CA	BNPDVL	-20090825BGC

Stations Potentially Affecting This Station

Chan	Call	City/State	Dist(km)	Status	Application	Ref. No.
07	K36FO	CALEXICO CA	164.8	CP MOD	BMPTVL	-20100525ACK
07	KABC-TV	LOS ANGELES CA	155.6	CP MOD	BMPCDT	-20090330AFV
07	NEW	NORTH PALM SPRINGS CA	12.1	APP	BNPDVL	-20090825BHP

KESSLER AND GEHMAN ASSOCIATES, INC.

507 NW 60th St. Ste C, Gainesville, FL 32607

KZTC-LP
San Diego, CA

Allocation Analysis

07	KLAS-TV	LAS VEGAS NV	263.5	LIC	BLCDDT	-20041202ACC
08	KILA-LP	CHERRY VALLEY CA	78.8	CP	BDISDVL	-20090630AHK
08	KILA-LP	CHERRY VALLEY CA	78.8	APP	BSTA	-20100114ADQ
08	KVPS-LP	INDIO CA	0.2	CP	BPTVL	-20080908AAL
07	KZTC-LP	SAN DIEGO CA	107.6	APP	USERRECORD-01	

Proposal causes no interference

#####

Analysis of Interference to Affected Station 10

Analysis of current record

Channel	Call	City/State	Application Ref. No.
07	K07NH	RIDGECREST, ETC. CA	BLTTV -4569

Stations Potentially Affecting This Station

Chan	Call	City/State	Dist(km)	Status	Application Ref. No.
07	K07IH	BAKER CA	154.1	LIC	BLTTV -3751
07	KAIL	FRESNO CA	226.5	APP	BPCDDT -20100401ABQ
07	KAIL	FRESNO CA	226.6	LIC	BLCDDT -20021002ABH
07	KABC-TV	LOS ANGELES CA	165.0	CP MOD	BMPCDDT -20090330AFV
07	KLAS-TV	LAS VEGAS NV	233.0	LIC	BLCDDT -20041202ACC
07	KZTC-LP	SAN DIEGO CA	300.6	APP	USERRECORD-01

Proposal causes no interference

#####

Analysis of Interference to Affected Station 11

Analysis of current record

Channel	Call	City/State	Application Ref. No.
07	K07TA	SANTA MARIA CA	BDFCDVA -20061030ADS

Stations Potentially Affecting This Station

Chan	Call	City/State	Dist(km)	Status	Application Ref. No.
07	KASC-CA	ATASCADERO CA	74.4	LIC	BLTVL -19990806JD
07	KAIL	FRESNO CA	263.0	APP	BPCDDT -20100401ABQ
07	KAIL	FRESNO CA	263.1	LIC	BLCDDT -20021002ABH
07	KABC-TV	LOS ANGELES CA	222.6	CP MOD	BMPCDDT -20090330AFV
07	KGO-TV	SAN FRANCISCO CA	373.8	CP MOD	BMPCDDT -20090623AAU
08	KKDJ-LP	ARROYO GRANDE CA	19.8	LIC	BLTVL -20070508AAI
08	KKDJ-LP	ARROYO GRANDE CA	19.8	CP	BDFCDVL -20090824AGZ
07	KZTC-LP	SAN DIEGO CA	374.4	APP	USERRECORD-01

Proposed station is beyond the site to
nearest cell evaluation distance

#####

Analysis of Interference to Affected Station 12

Analysis of current record

Channel	Call	City/State	Application Ref. No.
07	K07TA	SANTA MARIA CA	BLTVA -20090903ACD

Stations Potentially Affecting This Station

KESSLER AND GEHMAN ASSOCIATES, INC.

507 NW 60th St. Ste C, Gainesville, FL 32607

Allocation Analysis

KZTC-LP
San Diego, CA

Chan	Call	City/State	Dist(km)	Status	Application	Ref. No.
07	KASC-CA	ATASCADERO CA	76.6	LIC	BLTVL	-19990806JD
07	KAIL	FRESNO CA	249.7	APP	BPCDT	-20100401ABQ
07	KAIL	FRESNO CA	249.8	LIC	BLCDT	-20021002ABH
07	KABC-TV	LOS ANGELES CA	208.3	CP MOD	BMPCDT	-20090330AFV
07	KGO-TV	SAN FRANCISCO CA	375.7	CP MOD	BMPCDT	-20090623AAU
08	KKDJ-LP	ARROYO GRANDE CA	0.0	LIC	BLTVL	-20070508AAI
08	KKDJ-LP	ARROYO GRANDE CA	0.0	CP	BDFCDVL	-20090824AGZ
08	KZDF-LP	SANTA BARBARA CA	67.9	LIC	BLTVL	-20070111ACJ
07	KZTC-LP	SAN DIEGO CA	364.0	APP	USERRECORD-01	

Proposal causes no interference

#####

Analysis of Interference to Affected Station 13

Analysis of current record

Channel	Call	City/State	Application	Ref. No.
07	K07JC	INDIAN SPRINGS NV	BLTTV	-20090604AAZ

Stations Potentially Affecting This Station

Chan	Call	City/State	Dist(km)	Status	Application	Ref. No.
07	KAZT-TV	PRESCOTT AZ	381.6	LIC	BLCDT	-20090612AEO
07	K07IH	BAKER CA	131.4	LIC	BLTTV	-3751
07	KAIL	FRESNO CA	342.2	APP	BPCDT	-20100401ABQ
07	KAIL	FRESNO CA	342.2	LIC	BLCDT	-20021002ABH
07	KABC-TV	LOS ANGELES CA	343.3	CP MOD	BMPCDT	-20090330AFV
07	KLAS-TV	LAS VEGAS NV	89.3	LIC	BLCDT	-20041202ACC
07	K07CM	PANACA NV	141.3	LIC	BLTTV	-19940602IC
08	K08PG-D	INDIAN SPRINGS NV	0.0	CP	BDCCDTV	-20100917ACA
07	KZTC-LP	SAN DIEGO CA	416.8	APP	USERRECORD-01	

Proposed station is beyond the site to
nearest cell evaluation distance

#####

Analysis of Interference to Affected Station 14

Analysis of current record

Channel	Call	City/State	Application	Ref. No.
07	KLAS-TV	LAS VEGAS NV	BLCDT	-20041202ACC

Stations Potentially Affecting This Station

Chan	Call	City/State	Dist(km)	Status	Application	Ref. No.
07	KAZT-TV	PRESCOTT AZ	299.9	LIC	BLCDT	-20090612AEO
07	KAIL	FRESNO CA	411.5	APP	BPCDT	-20100401ABQ
07	KAIL	FRESNO CA	411.6	LIC	BLCDT	-20021002ABH
07	KABC-TV	LOS ANGELES CA	334.8	CP MOD	BMPCDT	-20090330AFV
07	KZTC-LP	SAN DIEGO CA	371.2	APP	USERRECORD-01	

Proposal causes no interference

#####

Analysis of Interference to Affected Station 15

KESSLER AND GEHMAN ASSOCIATES, INC.

507 NW 60th St. Ste C, Gainesville, FL 32607

Allocation Analysis

KZTC-LP
San Diego, CA

Analysis of current record

Channel	Call	City/State	Application Ref. No.
08	NEW	CALEXICO CA	BMJADVL -20100520ADH

Stations Potentially Affecting This Station

Chan	Call	City/State	Dist(km)	Status	Application Ref. No.
07	K36FO	CALEXICO CA	11.8	CP MOD	BMPTVL -20100525ACK
08	KAET	PHOENIX AZ	327.9	LIC	BLEDT -20090612AEF
08	KVPS-LP	INDIO CA	156.1	CP	BPTVL -20080908AAL
08	KFMB-TV	SAN DIEGO CA	164.2	LIC	BLCDT -20100520ACV
09	KECY-TV	EL CENTRO CA	74.0	LIC	BLCDT -20090723AAO
07	KZTC-LP	SAN DIEGO CA	141.6	APP	USERRECORD-01

Proposed station is beyond the site to
nearest cell evaluation distance

#####

Analysis of Interference to Affected Station 16

Analysis of current record

Channel	Call	City/State	Application Ref. No.
08	KILA-LP	CHERRY VALLEY CA	BDISDVL -20090630AHK

Stations Potentially Affecting This Station

Chan	Call	City/State	Dist(km)	Status	Application Ref. No.
07	KABC-TV	LOS ANGELES CA	78.2	CP MOD	BMPCDT -20090330AFV
07	NEW	NORTH PALM SPRINGS CA	68.0	APP	BNPDVL -20090825BHP
07	NEW	PALM SPRINGS CA	78.8	APP	BNPDVL -20090825BGC
08	KVPS-LP	INDIO CA	78.7	CP	BPTVL -20080908AAL
08	KFLA-LD	LOS ANGELES CA	78.1	LIC	BLDVL -20071001AAC
08	KFLA-LD	LOS ANGELES CA	78.9	APP	BSTA -20110808AAA
08	K08IA	NEWBERRY SPRINGS CA	111.5	LIC	BLTTV -5051
08	KFMB-TV	SAN DIEGO CA	124.9	LIC	BLCDT -20100520ACV
08	KZDF-LP	SANTA BARBARA CA	227.4	LIC	BLTVL -20070111ACJ
08	KFAZ-CA	VISALIA CA	294.7	LIC	BLTVA -20030424ABP
09	KCAL-TV	LOS ANGELES CA	78.2	LIC	BLCDT -20090612AIY
07	KZTC-LP	SAN DIEGO CA	109.7	APP	USERRECORD-01

Proposal causes no interference

#####

Analysis of Interference to Affected Station 17

Analysis of current record

Channel	Call	City/State	Application Ref. No.
08	KILA-LP	CHERRY VALLEY CA	BSTA -20100114ADQ

Stations Potentially Affecting This Station

Chan	Call	City/State	Dist(km)	Status	Application Ref. No.
07	KABC-TV	LOS ANGELES CA	78.2	CP MOD	BMPCDT -20090330AFV
07	NEW	NORTH PALM SPRINGS CA	68.0	APP	BNPDVL -20090825BHP
07	NEW	PALM SPRINGS CA	78.8	APP	BNPDVL -20090825BGC
08	KVPS-LP	INDIO CA	78.7	CP	BPTVL -20080908AAL
08	KFLA-LD	LOS ANGELES CA	78.1	LIC	BLDVL -20071001AAC
08	KFLA-LD	LOS ANGELES CA	78.9	APP	BSTA -20110808AAA

KESSLER AND GEHMAN ASSOCIATES, INC.

507 NW 60th St. Ste C, Gainesville, FL 32607

Allocation Analysis

KZTC-LP
San Diego, CA

08	K08IA	NEWBERRY SPRINGS CA	111.5	LIC	BLTTV	-5051
08	KFMB-TV	SAN DIEGO CA	124.9	LIC	BLCDT	-20100520ACV
08	KZDF-LP	SANTA BARBARA CA	227.4	LIC	BLTVL	-20070111ACJ
08	KFAZ-CA	VISALIA CA	294.7	LIC	BLTVA	-20030424ABP
09	KCAL-TV	LOS ANGELES CA	78.2	LIC	BLCDT	-20090612AIY
07	KZTC-LP	SAN DIEGO CA	109.7	APP	USERRECORD-01	

Proposal causes no interference

#####

Analysis of Interference to Affected Station 18

Analysis of current record

Channel	Call	City/State	Application Ref. No.
08	KVPS-LP	INDIO CA	BPTVL -20080908AAL

Stations Potentially Affecting This Station

Chan	Call	City/State	Dist(km)	Status	Application Ref. No.
07	NEW	NORTH PALM SPRINGS CA	12.0	APP	BNPDVL -20090825BHP
07	NEW	PALM SPRINGS CA	0.2	APP	BNPDVL -20090825BGC
08	KILA-LP	CHERRY VALLEY CA	78.7	CP	BDISDVL -20090630AHK
08	KILA-LP	CHERRY VALLEY CA	78.7	APP	BSTA -20100114ADQ
08	KFLA-LD	LOS ANGELES CA	155.5	LIC	BLDVL -20071001AAC
08	KFLA-LD	LOS ANGELES CA	156.2	APP	BSTA -20110808AAA
08	K08IA	NEWBERRY SPRINGS CA	109.9	LIC	BLTTV -5051
08	KFMB-TV	SAN DIEGO CA	137.0	LIC	BLCDT -20100520ACV
09	K09XW	PALM DESERT, ETC. CA	35.7	CP	BDFCDTV -20100521ABV
09	K09XW	PALM DESERT, ETC. CA	19.2	CP	BPTTV -20060331BIK
07	KZTC-LP	SAN DIEGO CA	107.5	APP	USERRECORD-01

Proposal causes no interference

#####

Analysis of Interference to Affected Station 19

Analysis of current record

Channel	Call	City/State	Application Ref. No.
08	KVPS-LP	INDIO CA	BLTVL -20020122AAB

Stations Potentially Affecting This Station

Chan	Call	City/State	Dist(km)	Status	Application Ref. No.
07	NEW	NORTH PALM SPRINGS CA	32.5	APP	BNPDVL -20090825BHP
07	NEW	PALM SPRINGS CA	20.6	APP	BNPDVL -20090825BGC
08	KAET	PHOENIX AZ	388.8	LIC	BLEDT -20090612AEF
08	KILA-LP	CHERRY VALLEY CA	99.0	CP	BDISDVL -20090630AHK
08	KILA-LP	CHERRY VALLEY CA	99.0	APP	BSTA -20100114ADQ
08	KFLA-LD	LOS ANGELES CA	176.1	LIC	BLDVL -20071001AAC
08	KFLA-LD	LOS ANGELES CA	176.8	APP	BSTA -20110808AAA
08	K08IA	NEWBERRY SPRINGS CA	122.1	LIC	BLTTV -5051
08	KFMB-TV	SAN DIEGO CA	143.3	LIC	BLCDT -20100520ACV
09	K09XW	PALM DESERT, ETC. CA	36.4	CP	BDFCDTV -20100521ABV
09	K09XW	PALM DESERT, ETC. CA	7.6	CP	BPTTV -20060331BIK
07	KZTC-LP	SAN DIEGO CA	112.2	APP	USERRECORD-01

Proposal causes no interference

#####

KESSLER AND GEHMAN ASSOCIATES, INC.

507 NW 60th St. Ste C, Gainesville, FL 32607

Allocation Analysis

KZTC-LP
San Diego, CA

Analysis of Interference to Affected Station 20

Analysis of current record

Channel	Call	City/State	Application Ref. No.
08	KFLA-LD	LOS ANGELES CA	BLDVL -20071001AAC

Stations Potentially Affecting This Station

Chan	Call	City/State	Dist(km)	Status	Application Ref. No.
07	KABC-TV	LOS ANGELES CA	0.1	CP MOD	BMPCDT -20090330AFV
08	KKDJ-LP	ARROYO GRANDE CA	208.3	LIC	BLTVL -20070508AAI
08	KKDJ-LP	ARROYO GRANDE CA	208.3	CP	BDFCDVL -20090824AGZ
08	K08MM	BAKERSFIELD CA	155.4	LIC	BLTVA -20051011ADH
08	KILA-LP	CHERRY VALLEY CA	78.1	CP	BDISDVL -20090630AHK
08	KILA-LP	CHERRY VALLEY CA	78.1	APP	BSTA -20100114ADQ
08	KFAZ-CA	FRESNO CA	239.5	CP	BDFCDVA -20080801ANV
08	KVPS-LP	INDIO CA	155.5	CP	BPTVL -20080908AAL
08	K08IA	NEWBERRY SPRINGS CA	143.8	LIC	BLTTV -5051
08	KFMB-TV	SAN DIEGO CA	171.9	LIC	BLCDT -20100520ACV
08	KZDF-LP	SANTA BARBARA CA	150.2	LIC	BLTVL -20070111ACJ
08	KFAZ-CA	VISALIA CA	239.5	LIC	BLTVA -20030424ABP
09	KCAL-TV	LOS ANGELES CA	0.1	LIC	BLCDT -20090612AIY
07	KZTC-LP	SAN DIEGO CA	169.1	APP	USERRECORD-01

Proposal causes no interference

#####

Analysis of Interference to Affected Station 21

Analysis of current record

Channel	Call	City/State	Application Ref. No.
08	KFLA-LD	LOS ANGELES CA	BSTA -20110808AAA

Stations Potentially Affecting This Station

Chan	Call	City/State	Dist(km)	Status	Application Ref. No.
07	KABC-TV	LOS ANGELES CA	0.8	CP MOD	BMPCDT -20090330AFV
08	KKDJ-LP	ARROYO GRANDE CA	207.6	LIC	BLTVL -20070508AAI
08	KKDJ-LP	ARROYO GRANDE CA	207.6	CP	BDFCDVL -20090824AGZ
08	K08MM	BAKERSFIELD CA	154.6	LIC	BLTVA -20051011ADH
08	KILA-LP	CHERRY VALLEY CA	78.9	CP	BDISDVL -20090630AHK
08	KILA-LP	CHERRY VALLEY CA	78.9	APP	BSTA -20100114ADQ
08	KFAZ-CA	FRESNO CA	238.8	CP	BDFCDVA -20080801ANV
08	KVPS-LP	INDIO CA	156.2	CP	BPTVL -20080908AAL
08	K08IA	NEWBERRY SPRINGS CA	144.0	LIC	BLTTV -5051
08	KFMB-TV	SAN DIEGO CA	172.7	LIC	BLCDT -20100520ACV
08	KZDF-LP	SANTA BARBARA CA	149.6	LIC	BLTVL -20070111ACJ
08	KFAZ-CA	VISALIA CA	238.8	LIC	BLTVA -20030424ABP
09	KCAL-TV	LOS ANGELES CA	0.7	LIC	BLCDT -20090612AIY
07	KZTC-LP	SAN DIEGO CA	169.9	APP	USERRECORD-01

Proposal causes no interference

#####

Analysis of Interference to Affected Station 22

Analysis of current record

Channel	Call	City/State	Application Ref. No.
08	K08IA	NEWBERRY SPRINGS CA	BLTTV -5051

KESSLER AND GEHMAN ASSOCIATES, INC.

507 NW 60th St. Ste C, Gainesville, FL 32607

Allocation Analysis

KZTC-LP
San Diego, CA

Stations Potentially Affecting This Station

Chan	Call	City/State	Dist(km)	Status	Application	Ref. No.
08	KILA-LP	CHERRY VALLEY CA	111.5	CP	BDISDVL	-20090630AHK
08	KILA-LP	CHERRY VALLEY CA	111.5	APP	BSTA	-20100114ADQ
08	KVPS-LP	INDIO CA	109.9	CP	BPTVL	-20080908AAL
08	KFLA-LD	LOS ANGELES CA	143.8	LIC	BLDVL	-20071001AAC
08	KFLA-LD	LOS ANGELES CA	144.0	APP	BSTA	-20110808AAA
08	KFMB-TV	SAN DIEGO CA	228.0	LIC	BLCDT	-20100520ACV
08	KFAZ-CA	VISALIA CA	253.3	LIC	BLTVA	-20030424ABP
07	KZTC-LP	SAN DIEGO CA	204.6	APP	USERRECORD-01	

Proposed station is beyond the site to
nearest cell evaluation distance

#####

Analysis of Interference to Affected Station 23

Analysis of current record

Channel	Call	City/State	Application	Ref. No.
08	KFMB-TV	SAN DIEGO CA	BLCDT	-20100520ACV

Stations Potentially Affecting This Station

Chan	Call	City/State	Dist(km)	Status	Application	Ref. No.
07	KABC-TV	LOS ANGELES CA	171.9	CP MOD	BMPCDT	-20090330AFV
09	KECY-TV	EL CENTRO CA	227.0	LIC	BLCDT	-20090723AAO
09	KCAL-TV	LOS ANGELES CA	172.0	LIC	BLCDT	-20090612AIY
07	KZTC-LP	SAN DIEGO CA	32.1	APP	USERRECORD-01	

Proposal causes no interference

#####

Analysis of Interference to Affected Station 24

Analysis of current record

Channel	Call	City/State	Application	Ref. No.
07	KZTC-LP	SAN DIEGO CA	USERRECORD-01	

Stations Potentially Affecting This Station

Chan	Call	City/State	Dist(km)	Status	Application	Ref. No.
07	K36FO	CALEXICO CA	153.4	CP MOD	BMPTVL	-20100525ACK
07	KABC-TV	LOS ANGELES CA	169.1	CP MOD	BMPCDT	-20090330AFV
07	NEW	NORTH PALM SPRINGS CA	109.2	APP	BNPDVL	-20090825BHP
07	NEW	PALM SPRINGS CA	107.6	APP	BNPDVL	-20090825BGC
07	KLAS-TV	LAS VEGAS NV	371.2	LIC	BLCDT	-20041202ACC
08	KILA-LP	CHERRY VALLEY CA	109.7	CP	BDISDVL	-20090630AHK
08	KILA-LP	CHERRY VALLEY CA	109.7	APP	BSTA	-20100114ADQ
08	KFMB-TV	SAN DIEGO CA	32.1	LIC	BLCDT	-20100520ACV

Total scenarios = 1

Result key: 3
Scenario 1 Affected station 24
Before Analysis

KESSLER AND GEHMAN ASSOCIATES, INC.

507 NW 60th St. Ste C, Gainesville, FL 32607

Allocation Analysis

KZTC-LP
San Diego, CA

Results for: 7A CA SAN DIEGO USERRECORD01 APP

HAAT 548.0 m, ATV ERP 1.5 kW

	POPULATION	AREA (sq km)
within Noise Limited Contour	2329766	6279.3
not affected by terrain losses	2323986	6128.4
lost to NTSC IX	0	0.0
lost to additional IX by ATV	110930	1963.9
lost to ATV IX only	110930	1963.9
lost to all IX	110930	1963.9

Potential Interfering Stations Included in above Scenario 1

7A CA LOS ANGELES	BMPCDT	20090330AFV	CP
8A CA SAN DIEGO	BLCDT	20100520ACV	LIC

#####

FINISHED FINISHED FINISHED FINISHED FINISHED FINISHED