

**Non-Interference Compliance for
Professional Antenna, Tower and Translator Service (PATTS)
Regarding Facility ID 139004 Channel 262**

Description of Exhibit 12 Contents

This exhibit demonstrates that the proposed facility complies with contour overlap and interference protection provisions in all of the applicable rule sections and that this application for a construction permit is in full compliance with 47 C.F.R. § 74.1204. The applicant acknowledges that it will comply with 47 C.F.R. § 74.1203 in regards to resolving any interference that may occur.

Page 2 of this exhibit is an explanation of the method used to demonstrate compliance with contour overlap and interference provisions based on 47 C.F.R. § 74.1204(d), which states:

[A]n application otherwise precluded by this section will be accepted if it can be demonstrated that no actual interference will occur due to intervening terrain, lack of population or such other factors as may be applicable.

Page 3 contains a tabulation of the vertical radiation pattern of the proposed antenna and the minimum ground clearance of the interfering contour based on this pattern.

Page 4 includes tabulations of the vertical radiation pattern for the proposed antenna provided by the antenna manufacturer.

Page 5 of this exhibit contains the tabulated data from the interference analysis, which shows all stations whose protected contours come within 50 km of the 34 dBμ F(50,10) contour of the proposed translator. These tabulated values were calculated using data from the FCC's CDBS files and 30 arc second terrain data. The column labeled "Adj" shows the number of channels difference between the entry and the proposed translator. The column labeled "Dist" shows the distance in km.

Page 6 of this exhibit is a portion of a USGS 1:24,000 scale 7.5 minute quadrangle at full scale with the calculated area of interference overlaid. The sheet includes the quadrangle name and measurement scale at the bottom. The area of interference was calculated using the free space equation and 120 radials.

Page 7 of this exhibit is a high resolution aerial photo of the vicinity surrounding the proposed translator's tower site provided by the U.S. Geological Survey's National Aerial Photography Program. It has been included to provide clarification of the vicinity.

Compliance with 47 C.F.R. § 74.1204(d)

All authorized second and third adjacent stations with which the proposed translator has contour overlap are tabulated below. Column four show the station's signal level at the proposed translator's tower site, and column five gives the minimum value within the entire standard interfering contour of the proposed translator (100 dBμ for most classes, 94 for class B, 97 for class B1). The minimum second or third adjacent F(50,50) contour within the proposed translator's standard interfering contour was used to calculate the proposed translator's actual "worst-case" interfering contour.

Application ID	File Number	Callsign	Contour at Tower	Min. Contour
1415878	BLH20110209ADH	KEKB	64.69	64.47
1165301	BLH20061025ADV	KMOZ-FM	60.56	60.41

This instant application does not interfere with second and third adjacent stations as the location of the proposed site is on the top of a mountain ridge with limited access for more than a mile (1.6 km). Thus, no population is located near the site, no actual interference occurs and this complies with 47 C.F.R. § 74.1204(d).

Antenna Manufacturer:	Nicomm
Antenna Model:	BKG77
CORAGL:	15 m
Maximum ERP:	0.001 kW
Interfering Contour:	100.41 dBμ
Max Int. Contour Distance:	186.59 m
Ground Clearance:	N/A m

NICOM BKG77 Depression Propagation Elevations - single bay

Depress Angle Below Horizontal	Antenna Relative Field	ERP (watts)	Distance to Interfering Contour (m)	Horizontal Distance to Contour from Antenna (m)	Vertical Clearance of Interfering Contour (m)
0	1	10.00	186.58	186.58	15.00
5	0.999	9.98	186.39	185.68	-1.24
10	0.982	9.64	183.22	180.43	-16.82
15	0.954	9.10	177.99	171.93	-31.07
20	0.918	8.43	171.28	160.95	-43.58
25	0.871	7.59	162.51	147.28	-53.68
30	0.818	6.69	152.62	132.17	-61.31
35	0.758	5.75	141.42	115.85	-66.12
40	0.691	4.77	128.92	98.76	-67.87
45	0.616	3.79	114.93	81.27	-66.27
50	0.538	2.89	100.38	64.52	-61.89
55	0.465	2.16	86.76	49.76	-56.07
60	0.391	1.53	72.95	36.48	-48.18
65	0.313	0.98	58.40	24.68	-37.93
70	0.239	0.57	44.59	15.25	-26.90
75	0.176	0.31	32.84	8.50	-16.72
80	0.128	0.16	23.88	4.15	-8.52
85	0.103	0.11	19.22	1.67	-4.14
90	0.105	0.11	19.59	0.00	-4.59

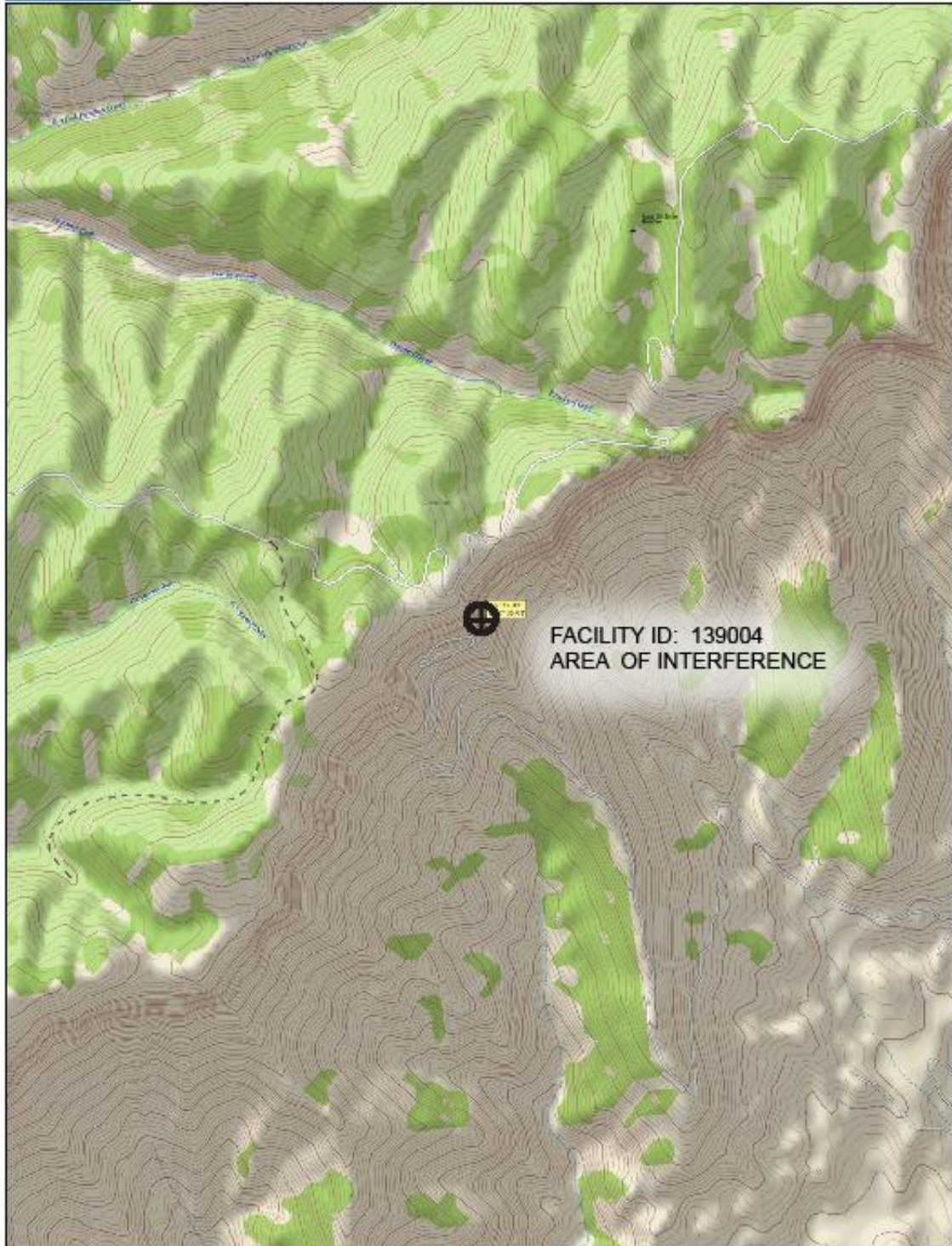


BAG 77

Vertical Values							
-180	0.487	-66	0.297	54	0.479	174	0.468
-177	0.478	-63	0.345	57	0.436	177	0.479
-174	0.467	-60	0.391	60	0.391		
-171	0.460	-57	0.436	63	0.345		
-168	0.454	-54	0.479	66	0.297		
-165	0.447	-51	0.523	69	0.253		
-162	0.439	-48	0.568	72	0.211		
-159	0.429	-45	0.616	75	0.176		
-156	0.419	-42	0.661	78	0.145		
-153	0.402	-39	0.706	81	0.120		
-150	0.385	-36	0.745	84	0.105		
-147	0.369	-33	0.783	87	0.100		
-144	0.359	-30	0.818	90	0.105		
-141	0.350	-27	0.852	93	0.118		
-138	0.338	-24	0.881	96	0.134		
-135	0.326	-21	0.910	99	0.151		
-132	0.314	-18	0.934	102	0.168		
-129	0.303	-15	0.954	105	0.185		
-126	0.290	-12	0.972	108	0.202		
-123	0.278	-9	0.987	111	0.219		
-120	0.265	-6	0.999	114	0.236		
-117	0.251	-3	0.999	117	0.252		
-114	0.236	0	1.000	120	0.265		
-111	0.218	3	0.999	123	0.278		
-108	0.202	6	0.999	126	0.290		
-105	0.185	9	0.987	129	0.304		
-102	0.168	12	0.972	132	0.314		
-99	0.151	15	0.954	135	0.327		
-96	0.134	18	0.934	138	0.338		
-93	0.118	21	0.910	141	0.350		
-90	0.105	24	0.881	144	0.360		
-87	0.100	27	0.852	147	0.370		
-84	0.105	30	0.818	150	0.386		
-81	0.120	33	0.783	153	0.403		
-78	0.145	36	0.745	156	0.420		
-75	0.176	39	0.706	159	0.430		
-72	0.211	42	0.661	162	0.440		
-69	0.253	45	0.616	165	0.448		
		48	0.568	168	0.455		
		51	0.523	171	0.461		

Nicom 11 C • 2426 Southwest Way Ste B • National City CA 91950 • USA • (619) 477-5294 • fax 6298

Facility ID	File Number	Callsign	Licensee	Sts	City	St	Cls	ERP	AMSL	Ch	Adj	Dist
30431	BLH20110209ADH	KEKB	TOWNSQUARE MEDIA GRAND JUNCTION LICENSE, LLC	LIC	FRUITA GRAND JUNCTION	CO	C	79000	2270	260	-2	86.48
81556	BLH20061025ADV	KMOZ-FM	MBC GRAND BROADCASTING, INC.	LIC	JUNCTION	CO	C1	30000	2252	264	2	86.2
162386	BMLH20100816AAX	KGHT	BS&T WIRELESS, INC.	LIC	EL JEBEL GLENWOOD SPRINGS	CO	A	6000	2682	263	1	88.69
39907	BLFT278	K261AI	MARC A ADLER & MARVIN L SCHAFER	LIC	SPRINGS	CO	D	8	2220	261	-1	54.45
56695	BLFT20110419AAB	K261AK	PITKIN COUNTY TRANSLATOR DEPARTMENT	LIC	BASALT GRAND JUNCTION	CO	D	6	2542	261	-1	76.48
81556	BXLH20120402ABU	KMOZ-FM	MBC GRAND BROADCASTING, INC.	LIC	JUNCTION	CO	C1	1100	2172	264	2	86.19
190407	BNPH20120524AAD	NEW	MOATS II, GARY L	APP	DINOSAUR	CO	C1	2500	2530	262	0	136.98
52691	BLFT20050607ADB	K265CS	PITKIN COUNTY TRANSLATOR DEPARTMENT	LIC	CARBONDALE	CO	D	15	3247	265	3	50.89
190375	BMPH20130212AAQ	KYKL	EDUCATIONAL MEDIA FOUNDATION PROFESSIONAL ANTENNA, TOWER AND TRANSLATOR SERVICE (PATTS)	APP	HOTCHKISS	CO	C3	25000	2120	260	-2	77.55
53631	BLFT20070904ABY	K262BT		LIC	MONTROSE	CO	D	10	3045	262	0	135.56
68289	BLFT19950329TB	K259AC	COMMUNITY RADIO FOR NORTHERN COLORADO	LIC	GYPSUM, ETC.	CO	D	249	3202	259	-3	101.11
190382	BNPH20120529ALR	NEW	JER LICENSES, LLC	CP	DOTSERO	CO	A	1550	2484	265	3	82.26
139963	BLFT20070910ABA	K262BO	PAUL MACARTHUR ANDERSON	LIC	MOAB	UT	D	10	2616	262	0	163.41
156601	BNPFT20030317IGZ	NEW	RANDY M HUDSON	APP	ASPEN	CO	D	9	2661	261	-1	105.63
190407	BSFH20120103AEF	NEW	MOATS II, GARY L	APP	DINOSAUR	CO	C0	0	1890	262	0	84.18
59597	BLH19960205KA	KIMN	WILKS LICENSE COMPANY-DENVER LLC PROFESSIONAL ANTENNA, TOWER AND TRANSLATOR SERVICE (PATTS)	LIC	DENVER	CO	C	97000	2379	262	0	234.86
145346	BNPFT20030314BKB	NEW		APP	CRAIG STEAMBOAT SPRINGS	CO	D	19	2590	265	3	73.26
148463	BNPFT20030314CLB	NEW	CIMARRON COMMUNICATIONS CO, LLC	APP	SPRINGS	CO	D	50	2526	262	0	139.24
59597	BLH19960702KA	KIMN	WILKS LICENSE COMPANY-DENVER LLC	LIC	DENVER	CO	C	18500	2347	262	0	234.89
63966	BLH20050907ABB	KSIT	BIG THICKET BROADCASTING COMPANY OF WYOMING, INC.	LIC	ROCK SPRINGS	WY	C	99000	2660	259	-3	232.8



Data use subject to license.

© DeLorme, XMap® 7.

www.delorme.com

