

Exhibit 24
FACILITY COMPLIES WITH §73.1690
prepared for
Citadel Broadcasting Company
WQXA-FM York, Pennsylvania
Facility ID 52169
Ch. 289B 25 kW 215 m

Citadel Broadcasting Company (“*Citadel*”) is the licensee of WQXA-FM (Facility ID 52169, Ch. 289B, BLH-19861120KC), York, Pennsylvania. *Citadel* engineers recently discovered problems with the WQXA-FM antenna system which necessitated its complete replacement. The replacement resulted in no change in the composite directional antenna pattern, antenna height, or effective radiated power (“ERP”). Therefore, the work was done pursuant to the provisions of §73.1690(c)(2) and §73.1620(c)(10). This statement is provided to demonstrate compliance with the requirements of §73.1690.

The *FM Directional Broadcast Antenna Proof-of-Performance* report, which was prepared by the antenna manufacturer, is provided herein as **Attachment 1**. In addition to describing the antenna measurement procedure, the report contains tabular and polar plots that demonstrate compliance with the authorized WQXA-FM antenna pattern. The report also shows a measured composite pattern RMS of 0.795, which is 87.4% of the authorized pattern¹ RMS, thus complying with §73.1690(c)(2)(ii). Additionally, the report specifies a proper antenna orientation of 350°, which is confirmed by the surveyor’s statement included herein as **Attachment 2**. The engineer’s statement, which certifies the proper installation of the antenna, is provided herein as **Attachment 3**.

The WQXA-FM support structure also serves as the antenna system for WQXA(AM) (Facility ID 52172, York, Pennsylvania). WQXA-FM construction resulted in a minor change to the WQXA(AM) antenna impedance. An FCC Form 302-AM license application requesting authorization for Direct Measurement of Power, which details this change, is expected to be filed concurrently with the instant application.

¹ The RMS of the authorized directional antenna pattern is 0.910 relative field.

Exhibit 24 - Statement A
FACILITY COMPLIES WITH §73.1690
prepared for
Citadel Broadcasting Company
(page 2 of 2)

Human Exposure to Radiofrequency Exposure

Because no change was made in the antenna height above ground, elevation pattern, or ERP, there will be no change in Radiofrequency Exposure at ground level. Similarly, no change was made to the tower height, marking or lighting. The existing fencing around the base of the tower and posted RF exposure warning signs remain in place. Therefore, it is believed that an environmental assessment is not required.

Conclusion

Citadel replaced an existing directional FM antenna following the procedures specified in §73.1690(c)(2). No change was made in the antenna height above ground or number of bays. Neither the measured vertical component nor the measured horizontal component exceeds the authorized directional pattern envelope. Additionally, the measured composite directional antenna pattern meets 85% of the RMS of the authorized directional pattern envelope. The station engineer and a licensed surveyor have certified the proper installation and orientation of the antenna system. Thus, it is believed that the WQXA-FM installation complies with §73.1690.

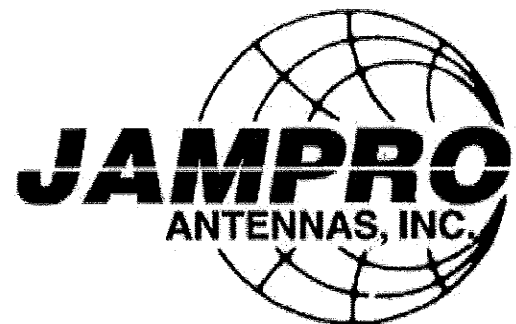
**FM DIRECTIONAL BROADCAST ANTENNA
PROOF-OF-PERFORMANCE**

MODEL JMPC-4 D DA

SERIAL NUMBER 11920

WQXA-FM

York, PA



**6340 Sky Creek Drive • Sacramento, California USA 95828
(916) 383-1177 phone • (916) 383-1182 fax**



6340 Sky Creek Drive, Sacramento, California 95828
P.O. Box 292880, Sacramento, California 95829-2880

(916) 383-1177 FAX (916) 383-1182

TABLE OF CONTENTS

A.	Engineer's Statement	1,2
B.	Mechanical Drawings	3,4
C.	Composite Azimuth Pattern, Plot	5
D.	Composite Azimuth Pattern, Tabulation	6
E.	Azimuth Pattern, Horizontal & Vertical Polarizations, Plot	7
F.	Azimuth Pattern, Horizontal & Vertical Polarizations, Tabulation	8
G.	Elevation Plane Pattern, Plot	9
H.	Elevation Plane Pattern, Tabulation	10



6340 Sky Creek Drive, Sacramento, California 95828
P.O. Box 292880, Sacramento, California 95829-2880

(916) 383-1177 FAX (916) 383-1182

DATE: May 20, 2004

ANTENNA GAIN	H-pol	V-pol
relative	3.80	3.80
(dBd)	(5.80)	(5.80)

**RMS OF THE
AZIMUTH PATTERNS:**

FM ANTENNA FOR:

STATION: WQXA-FM

LOCATION: York, PA

MODEL NUMBER: JMPC-4 D DA

FREQUENCY & ERP: 105.7 MHz, 25.00 kW

ANTENNA INPUT POWER: 6.58 kW

ANTENNA BOOM HEADING: 350° T.

Composite	H-pol	V-pol
0.795	0.736	0.751

CERTIFICATION

This certification, along with the accompanying antenna specification sheet, antenna mounting sketches, and azimuth and elevation patterns, certifies the construction and measurement of the *JAMPRO* FM CP antenna to the station's requirements, as measured at the *JAMPRO* antenna site in Sacramento, California. The following is an outline of construction methods, pattern measurements, installation requirements, recommended maintenance and equipment used.

CONSTRUCTION

A standard CP FM antenna model was used and parasitic reflectors were added to create the required directional patterns. From experience and by repeated measurements, these elements were adjusted as to position until the final configuration was determined and the pattern requirements were met. These additional elements are steel, hot dipped galvanized and either bolted or welded in place. Measurements to establish their exact location are shown on the antenna mounting sketches.

MEASUREMENT

The full scale antenna was mounted on an exact duplicate of its final support at the station. We were careful to duplicate conduits, cables and anything peculiar to this mounting. This was then placed on a turntable at the *JAMPRO* antenna range. This directional antenna was used for receiving the radiation from a transmitting antenna that is elevated 25 feet above ground and located at a distance of 7,000 feet. This transmitting antenna is capable of transmitting either horizontal or vertical polarization. The frequency of the signal generator was accurately set to station frequency by use of a frequency counter. A spectrum analyzer was used to continuously measure field strength as the antenna under test was rotated. Field strength at each azimuth was then plotted.



6340 Sky Creek Drive, Sacramento, California 95828
P.O. Box 292880, Sacramento, California 95829-2880

(916) 383-1177 FAX (916) 383-1182

Station: **WQXA-FM**

Model: **JMPC-4 D DA**

INSTALLATION

The antenna must be installed in exactly the manner in which it was measured at the factory. This is shown in detail on the antenna mounting sketch, including the azimuth bearing of the elements. This boom must be verified by a surveyor at the site when installation is being completed. Good engineering practices should be followed in any details not covered by specific instructions.

MAINTENANCE

Annual or regular inspection should be made on the antenna system. At this time, tightness of U-bolts, or other fastenings, should be routinely checked. Any deterioration of the antenna due to lightning, or other causes should be promptly repaired.

EQUIPMENT

MODEL: -3000 WAVETEK SIGNAL GENERATOR, SERIAL #66479
-8591E H.P. SPECTRUM ANALYZER, SERIAL #3308A01312, CAL'd 1/16/03
-TUNED CAVITY DIPOLE

CONCLUSION

In the development of this pattern, JAMPRO antennas, Inc. observed known requirements of the FCC, as stated on the station construction permit.

Gain figures and required input power to achieve station ERP, as well as other details, are found on the first page.

This certification, with its calculations were performed by J. Dane Jubera, B.S.E.E., Electrical Engineer, JAMPRO Antennas, Inc.

EXECUTED THIS 20th DAY OF MAY, 2004

BY:

J. Dane Jubera, B.S.E.E. JAMPRO Antennas, Inc.



6340 Sky Creek Drive, Sacramento, California 95828
P.O. Box 292880, Sacramento, California 95829-2880

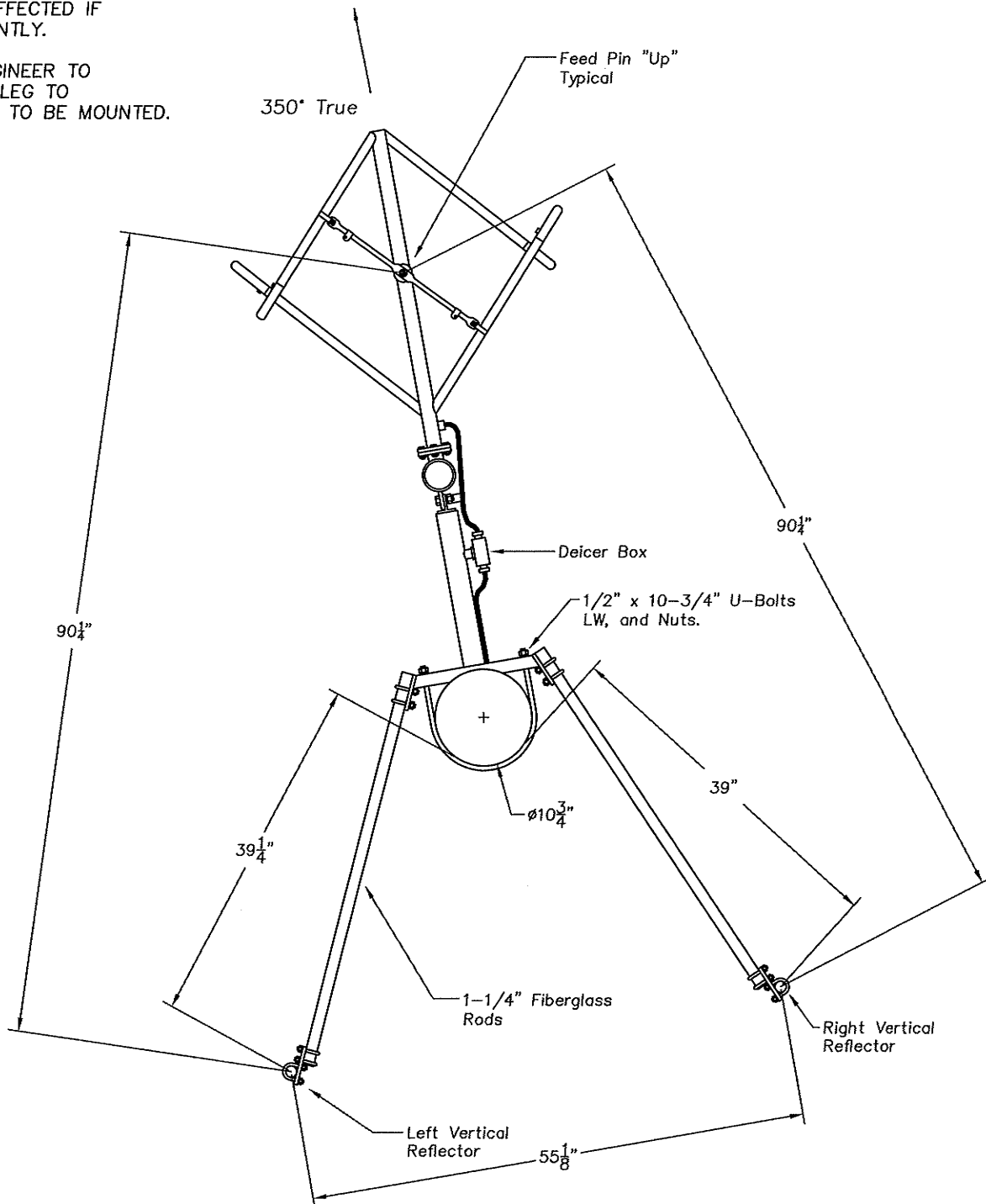
(916)383-1177 FAX (916)383-1182

TOP VIEW

NOTE:

INSTALL ANTENNA AS SHOWN.
VSWR COULD BE AFFECTED IF
INSTALLED DIFFERENTLY.

STATION CHIEF ENGINEER TO
DETERMINE TOWER LEG TO
WHICH ANTENNA IS TO BE MOUNTED.



TITLE:

11920Top.

JOB NO.

11920

ANTENNA MODEL:

JMPC-4D DA

FREQ:

105.7 MHz

REV:

0

DATE:

5/4/04

CUSTOMER:

WQXA-FM

CALL SIGN:

WQXA

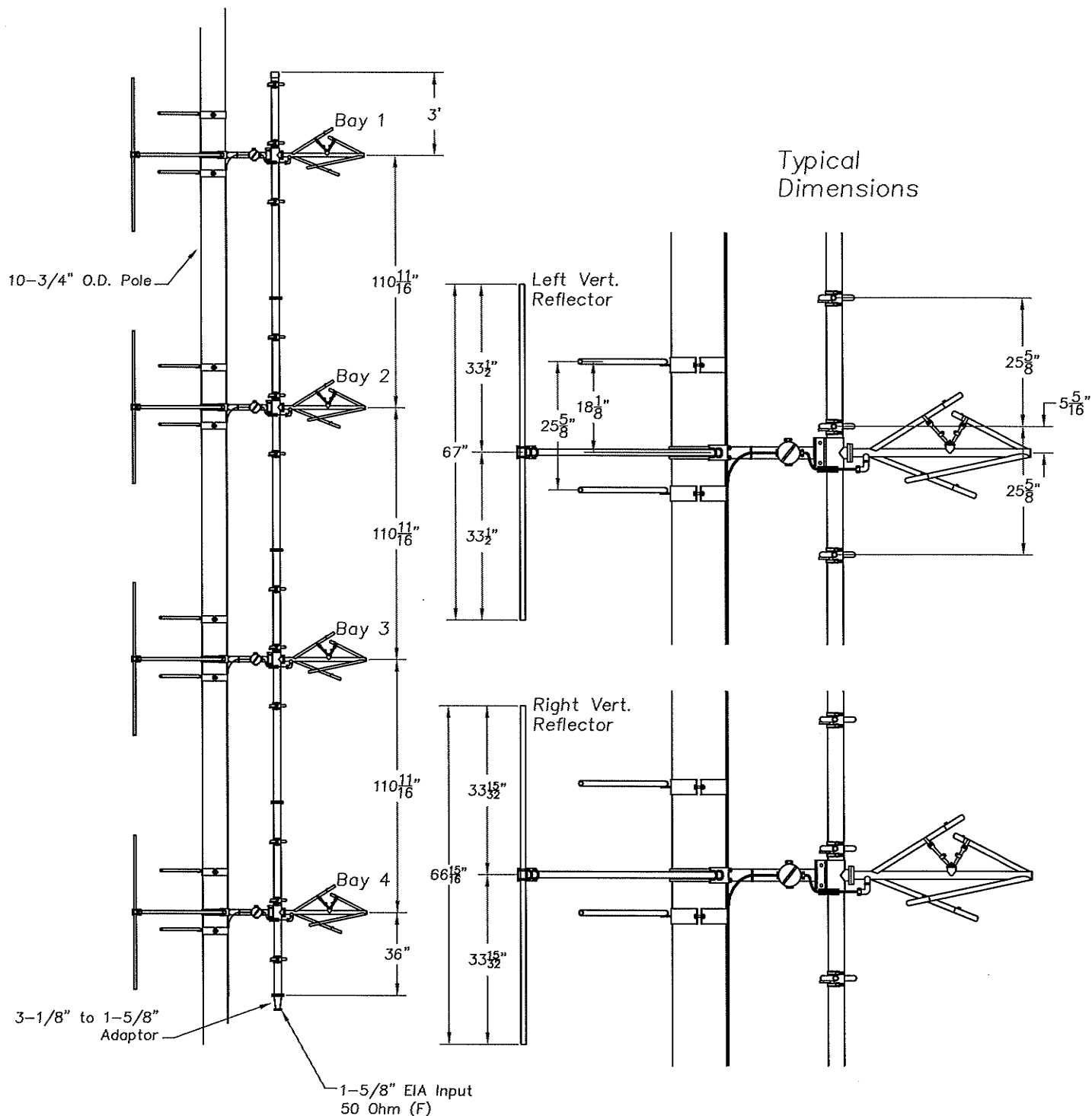
SHEET:

3 of 5



6340 Sky Creek Drive, Sacramento, California 95828
P.O. Box 292880, Sacramento, California 95829-2880

Voice: (916)383-1177
FAX: (916)383-1182



TITLE:

11920 Elev.

JOB NO.

11920

ANTENNA MODEL:

JMPC-4D DA

FREQ:

105.7 MHz

REV:

0

DATE:

5/4/04

CUSTOMER:

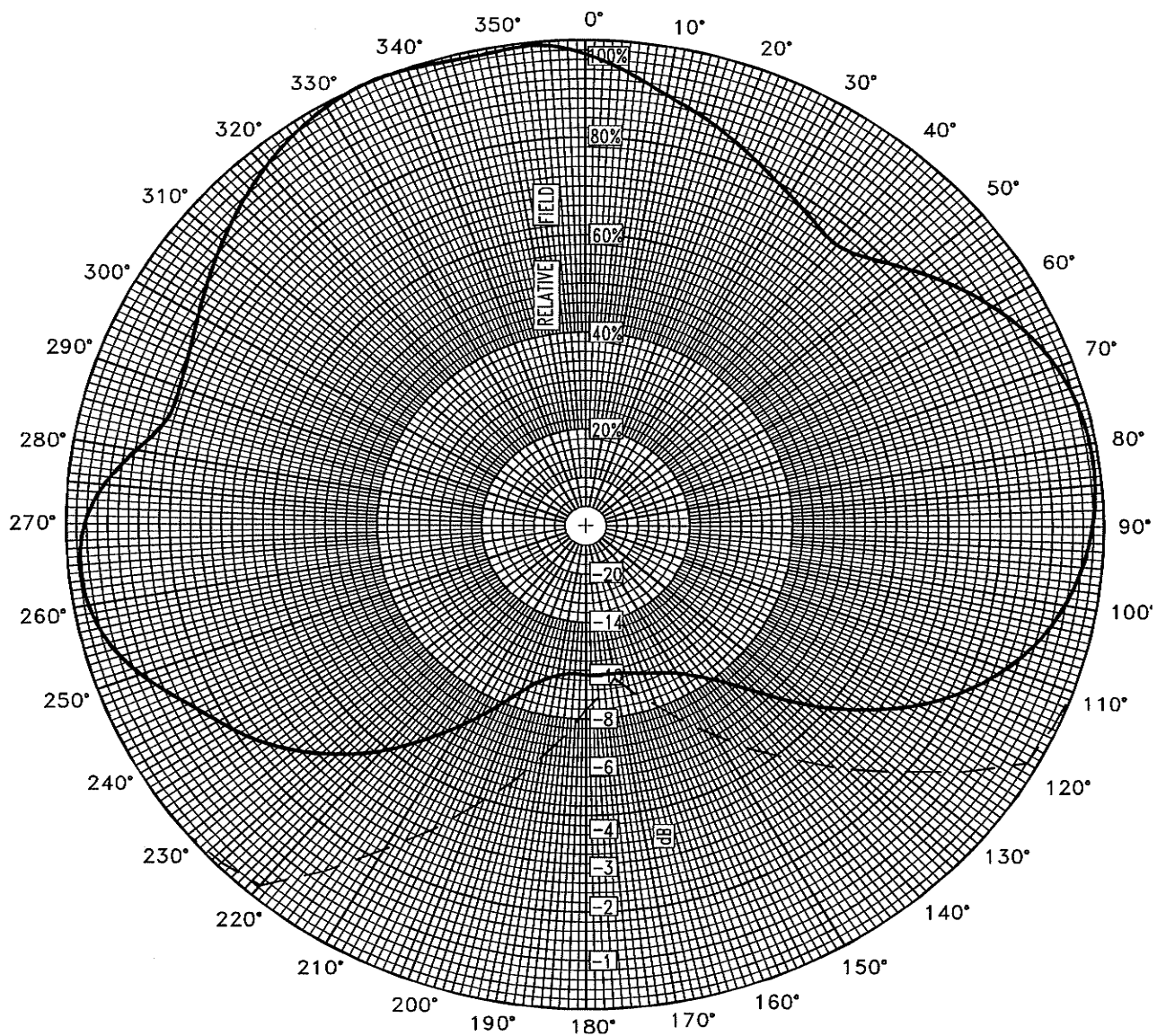
WQXA-FM

CALL SIGN:

WQXA

SHEET:

1 of 5



Azimuth Pattern

Customer: WQXA-FM

Date: February 9, 2004

Frequency: 105.7 MHz

Type Number: JMPC-4 D DA

Notes:

COMPOSITE PATTERN ENVELOPE (H & V)



(916) 383-1177 Fax: (916) 383-1182

6340 Sky Creek Drive, Sacramento, CA 95828
P.O. Box 292880, Sacramento, CA 95829-2880



6340 Sky Creek Drive, Sacramento, California 95828
P.O. Box 292880, Sacramento, California 95829-2880

(916) 383-1177 FAX (916) 383-1182

WQXA-FM

ERP = 25.00 kW

February 9, 2004

JMPC-4 D DA

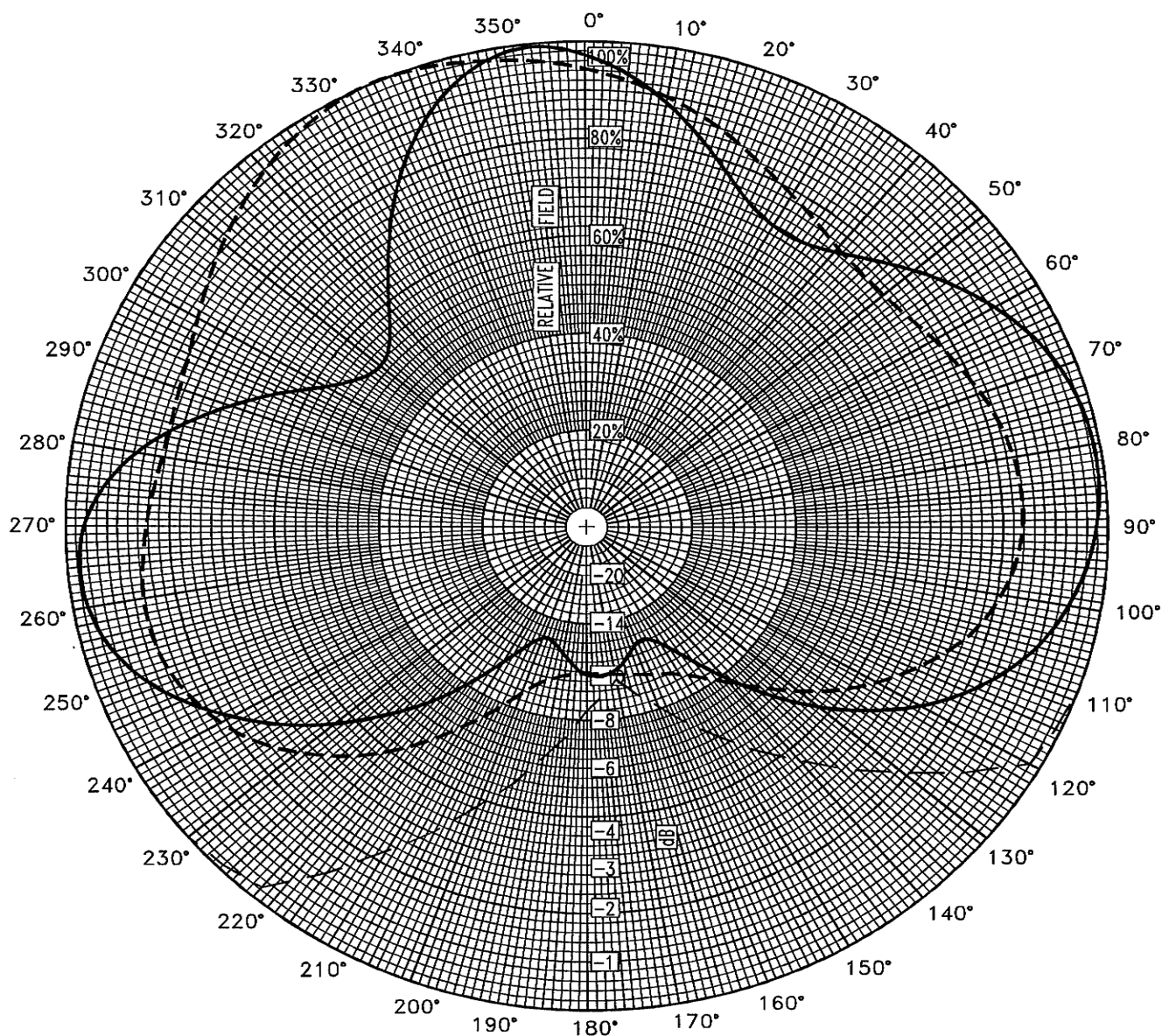
TABULATION OF RELATIVE FIELD

COMPOSITE MEASURED PATTERN (H & V)

<u>BEARING</u>	<u>FIELD</u>	<u>ERP</u> <u>(kW)</u>	<u>dBk</u>
0	0.975	23.77	13.76
10	0.900	20.25	13.06
20	0.845	17.85	12.52
30	0.790	15.60	11.93
40	0.750	14.06	11.48
50	0.825	17.02	12.31
60	0.910	20.70	13.16
70	0.970	23.52	13.71
80	0.990	24.50	13.89
90	0.980	24.01	13.80
100	0.940	22.09	13.44
110	0.865	18.71	12.72
120	0.745	13.88	11.42
130	0.585	8.56	9.32
140	0.420	4.41	6.44
150	0.350	3.06	4.86
160	0.325	2.64	4.22
170	0.310	2.40	3.81
180	0.310	2.40	3.81
190	0.315	2.48	3.95
200	0.365	3.33	5.23
210	0.480	5.76	7.60
220	0.615	9.46	9.76
230	0.730	13.32	11.25
240	0.815	16.61	12.20
250	0.915	20.93	13.21
260	0.975	23.77	13.76
270	0.970	23.52	13.71
280	0.880	19.36	12.87
290	0.830	17.22	12.36
300	0.860	18.49	12.67
310	0.910	20.70	13.16
320	0.960	23.04	13.62
330	0.995	24.75	13.94
340	1.000	25.00	13.98
350	0.990	24.50	13.89

Relative fields at other azimuths:

45	0.780	225	0.675
135	0.495	315	0.935



Azimuth Pattern

Customer: WQXA-FM

Date: February 9, 2004

Frequency: 105.7 MHz

Type Number: JMPC-4 D DA

Notes: MEASURED PATTERN IN FULL SCALE

— HPOL - - - - VPOL - - - - LIMITS



6340 Sky Creek Drive, Sacramento, CA 95828
P.O. Box 292880, Sacramento, CA 95829-2880

(916) 383-1177 Fax: (916) 383-1182



6340 Sky Creek Drive, Sacramento, California 95828
P.O. Box 292880, Sacramento, California 95829-2880

(916) 383-1177 FAX (916) 383-1182

WQXA-FM

ERP = 25.00 kW

February 9, 2004

JMPC-4 D DA

TABULATION OF MEASURED FIELDS

BEARING	HORIZONTAL POLARIZATION		VERTICAL POLARIZATION	
	FIELD	ERP(KW)	FIELD	ERP(KW)
0	0.975	23.77	0.945	22.33
10	0.890	19.80	0.900	20.25
20	0.780	15.21	0.845	17.85
30	0.715	12.78	0.790	15.60
40	0.740	13.69	0.750	14.06
50	0.825	17.02	0.745	13.88
60	0.910	20.70	0.775	15.02
70	0.970	23.52	0.810	16.40
80	0.990	24.50	0.835	17.43
90	0.980	24.01	0.840	17.64
100	0.940	22.09	0.810	16.40
110	0.865	18.71	0.745	13.88
120	0.745	13.88	0.645	10.40
130	0.585	8.56	0.530	7.02
140	0.410	4.20	0.420	4.41
150	0.275	1.89	0.350	3.06
160	0.260	1.69	0.325	2.64
170	0.305	2.33	0.310	2.40
180	0.310	2.40	0.305	2.33
190	0.265	1.76	0.315	2.48
200	0.240	1.44	0.365	3.33
210	0.325	2.64	0.480	5.76
220	0.480	5.76	0.615	9.46
230	0.640	10.24	0.730	13.32
240	0.790	15.60	0.815	16.61
250	0.915	20.93	0.860	18.49
260	0.975	23.77	0.865	18.71
270	0.970	23.52	0.845	17.85
280	0.880	19.36	0.825	17.02
290	0.730	13.32	0.830	17.22
300	0.575	8.27	0.860	18.49
310	0.510	6.50	0.910	20.70
320	0.590	8.70	0.960	23.04
330	0.750	14.06	0.995	24.75
340	0.900	20.25	1.000	25.00
350	0.990	24.50	0.975	23.77

MAXIMUM FIELDS:

355 1.000 25.00

340

1 25.00

MINIMUM FIELDS:

200 0.240 1.44

185

0.305 2.33

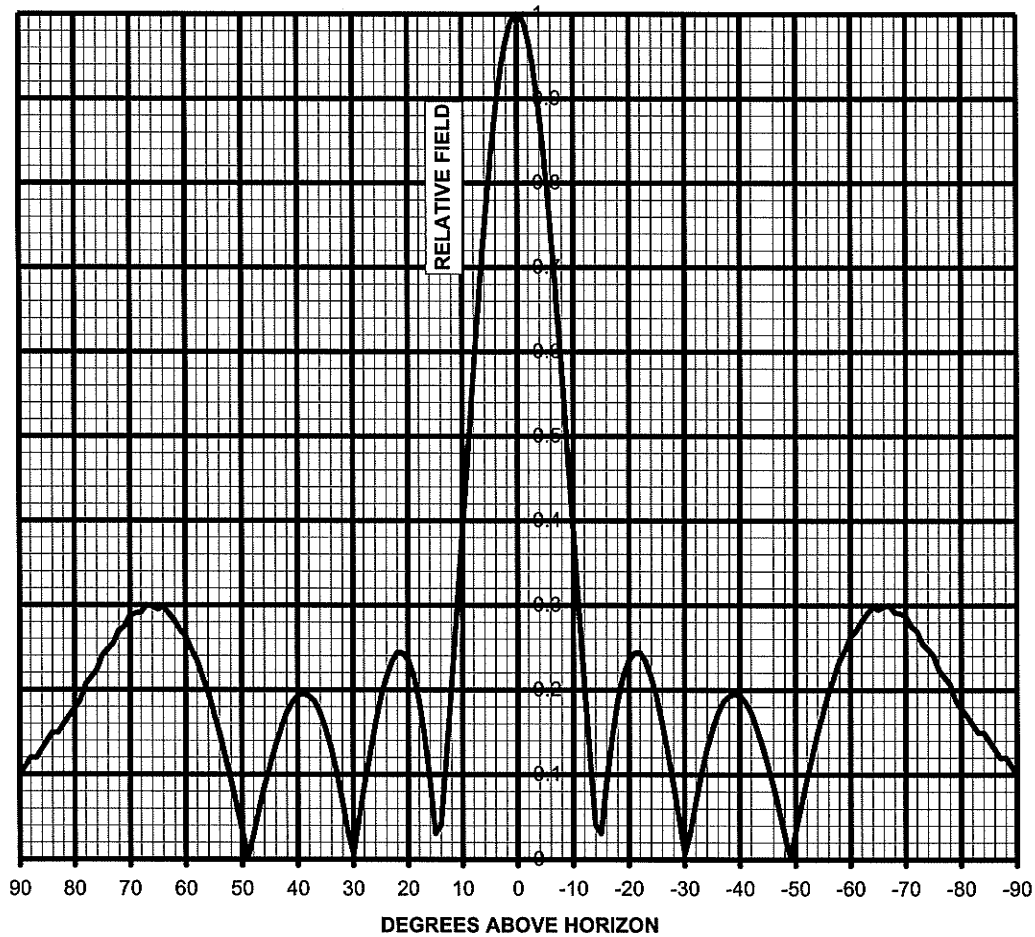


6340 Sky Creek Drive, Sacramento, California 95828
P.O. Box 292880, Sacramento, California 95829-2880

(916) 383-1177 FAX (916) 383-1182

PLOT OF ELEVATION PLANE PATTERN

STATION: WQXA-FM 105.7 MHz JMPC-4 D DA 1.00 lambda spacing





6340 Sky Creek Drive, Sacramento, California 95828
P.O. Box 292880, Sacramento, California 95829-2880

(916) 383-1177 FAX (916) 383-1182

TABULATION OF ELEVATION PLANE PATTERN

STATION: WQXA-FM 105.7 MHz JMPC-4 D DA 1.00 lambda spacing

<u>ELEVATION</u>	<u>RELATIVE</u>	<u>ELEVATION</u>	<u>RELATIVE</u>	<u>ELEVATION</u>	<u>RELATIVE</u>
<u>ANGLE</u>	<u>FIELD</u>	<u>ANGLE</u>	<u>FIELD</u>	<u>ANGLE</u>	<u>FIELD</u>
10	0.390	-25	0.191	-60	0.263
9	0.483	-26	0.160	-61	0.270
8	0.576	-27	0.124	-62	0.281
7	0.664	-28	0.087	-63	0.290
6	0.745	-29	0.047	-64	0.297
5	0.819	-30	0.007	-65	0.295
4	0.881	-31	0.032	-66	0.298
3	0.932	-32	0.068	-67	0.300
2	0.970	-33	0.101	-68	0.291
1	0.992	-34	0.130	-69	0.290
0	1.000	-35	0.153	-70	0.287
-1	0.992	-36	0.172	-71	0.274
-2	0.970	-37	0.186	-72	0.270
-3	0.932	-38	0.192	-73	0.254
-4	0.881	-39	0.195	-74	0.248
-5	0.819	-40	0.193	-75	0.241
-6	0.745	-41	0.185	-76	0.223
-7	0.664	-42	0.173	-77	0.215
-8	0.576	-43	0.155	-78	0.206
-9	0.483	-44	0.135	-79	0.187
-10	0.390	-45	0.112	-80	0.178
-11	0.296	-46	0.086	-81	0.169
-12	0.205	-47	0.058	-82	0.159
-13	0.120	-48	0.029	-83	0.149
-14	0.041	-49	0.002	-84	0.150
-15	0.030	-50	0.033	-85	0.140
-16	0.093	-51	0.063	-86	0.130
-17	0.144	-52	0.094	-87	0.120
-18	0.187	-53	0.121	-88	0.120
-19	0.216	-54	0.149	-89	0.110
-20	0.235	-55	0.172	-90	0.100
-21	0.243	-56	0.197		
-22	0.244	-57	0.215		
-23	0.233	-58	0.235		
-24	0.215	-59	0.247		



Light-Heigel & Associates, Inc.

ENGINEERS AND SURVEYORS

July 19, 2004

Citadel Broadcasting Company
919 Buckingham Boulevard
Elizabethtown, PA 17022

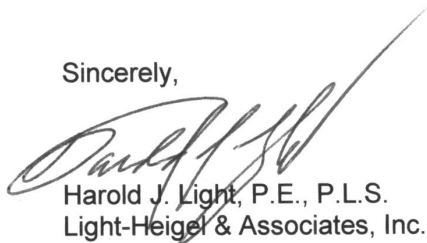
Attn: Bob Adams

**RE: Field Survey
DJ Pole for WQXA-FM Tower**

Dear Mr. Adams:

This letter is to certify that based upon the field survey as performed on June 25, 2004 and subsequent field verification on June 28, 2004, the four-bay FM antenna elements of the WQXA-FM tower are aligned at 350° AZM true north.

Sincerely,


Harold J. Light, P.E., P.L.S.
Light-Heigel & Associates, Inc.



KLH/oew

X:\2004\04-0291 CITADEL BROADCASTING\CORRESPONDENCE & NOTES\FINDINGS LETTER 040715.DOC

CIVIL

STRUCTURAL

MUNICIPAL

ENVIRONMENTAL

HYDROLOGY

INSPECTIONS

SANITARY

WATER

LAND SURVEYS

STORM WATER

LAND DEVELOPMENT

SOILS/PERCOLATION

TESTING

AERIAL SURVEYS

ZONING ENFORCEMENT

MUNICIPAL PLANNING

MAIN OFFICE:

430 EAST MAIN ST.
PALMYRA, PA 17078
717-838-1351
1-800-257-2190
Fax: 717-838-3820
comments@light-heigel.com

BERKS

Suite 102, Grande Plaza
1103 Rocky Drive
West Lawn, PA 19609
610-678-7560
Fax: 610-678-7686

HALIFAX

906 North River Rd.
P.O. Box 602
Halifax, PA 17032
717-896-8881
Fax: 717-896-9145

LANCASTER

845 Silver Spring Plaza
Suite F
Lancaster, PA 17601
717-285-7002
Fax: 717-285-2794

LEWISBURG

142 Main St.
P.O. Box 120
Montandon, PA 17850
570-524-7742
Fax: 570-524-7746

MONTGOMERY

1700 Dekalb Pike
Blue Bell, PA 19422
610-279-1830
Fax: 610-279-1824

SCHUYLKILL HAVEN

39 Dock St.
Schuylkill Haven, PA 17972
570-385-3439
Fax: 570-385-5788

NEW JERSEY

327 Greens Ridge Rd.
Stewartsville, NJ 08886
1-800-257-2190

WARRINGTON

P.O. Box 639
Warrington, PA 18976
215-918-2603
Fax: 215-918-2603

Providing Answers. Designing Solutions.

A member of A PROFESSIONAL MANAGEMENT GROUP

www.light-heigel.com



Citadel Communications Corporation

August 6, 2004

Re: WQXA-FM Jampro JMPC-4D-DA

This is to certify that the antenna, Jampro model JMPC-4D-DA, was assembled and installed exactly as specified in the instructions supplied by the manufacturer.

This statement is also to certify that I, Richard C. Hill, being the Chief Engineer of WQXA-FM for the past 4 ½ years and prior to that, Chief Engineer for Quaker State Broadcasting for 18 years, licensee of stations WTPA-FM and WNCE-FM, have had extensive experience with Jampro, ERI and Shively antennas, installation, maintenance and repair.

Richard C. Hill
Chief Engineer, Citadel Broadcasting
WQXA-AM/FM, WCPP-FM, WCAT-FM

CITADEL COMMUNICATIONS CORPORATION
WQXA FM/AM • WCPP FM • WCAT FM • WIOV FM/AM
919 Buckingham Boulevard, Elizabethtown, PA 17022
Tel: 800.932.0505 Fax: 717.367.0239