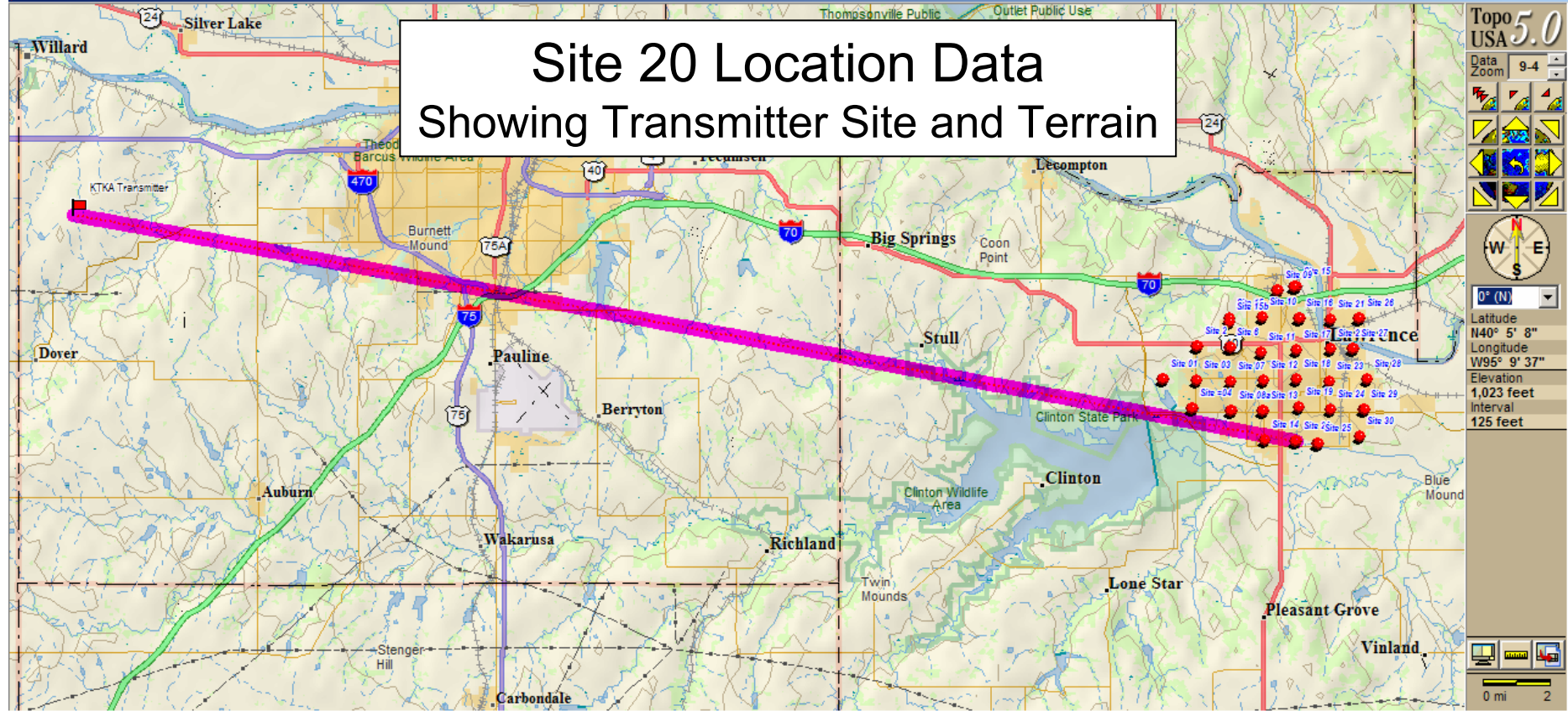


Site 20 Location Data Showing Transmitter Site and Terrain



Topo USA 5.0

Data Zoom 9-4

Latitude N40° 5' 8"

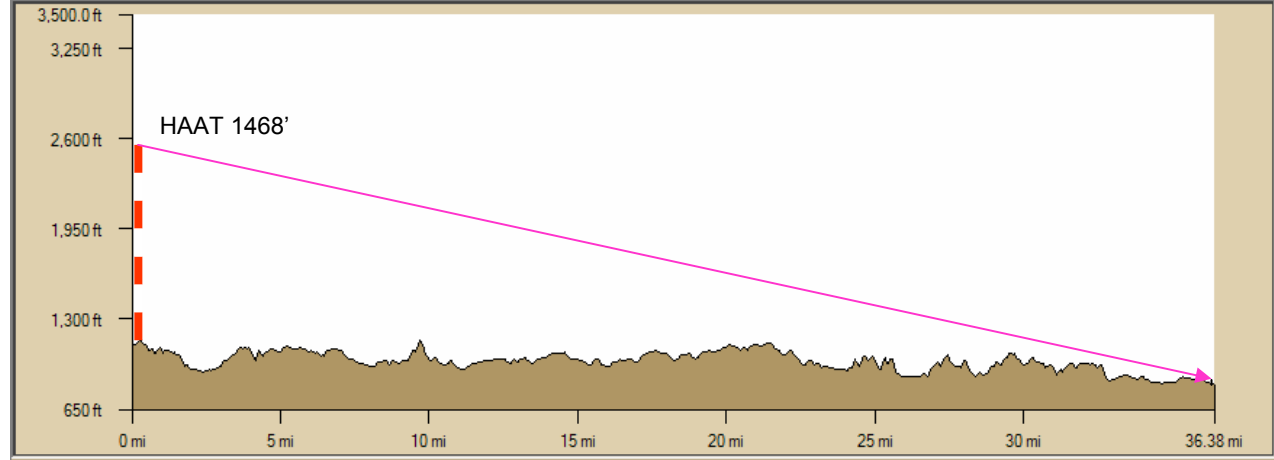
Longitude W95° 9' 37"

Elevation 1,023 feet

Interval 125 feet

0 mi 2

Map Files Find Print Draw GPS Route Profile 3-D Info NetLink Map Display Handheld Export



Latitude: N38° 55' 48.78"

Longitude: W95° 15' 6.54"

Lin Dist: 36.34 mi

Terr Dist: 36.38 mi

Climb Dist: 17.72 mi

Desc Dist: 18.65 mi

Elev: 826.5 ft

Elev Gain: -299.8 ft

Climb Elev: 2,827.5 ft

Desc Elev: 3,127.3 ft

Grade: 3

Avg Grade: 3

☐ Show Text

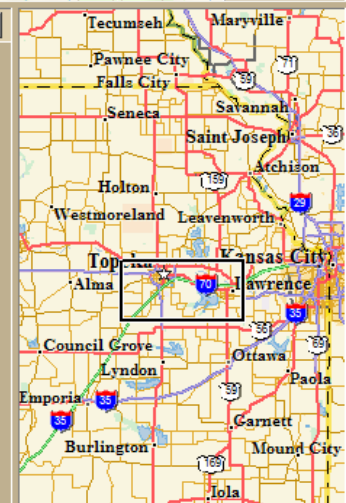
Manual Scale

☒ Max Elev 3500.00 ft

☐ Min Elev 820.01 ft

☒ Increase Res On Scale

Reverse Clear More



Location: Site 20

Date: 13 April 2005

Time: 1806

Temperature: 64.9°F

Dew Point: 34°F

Humidity: 32%

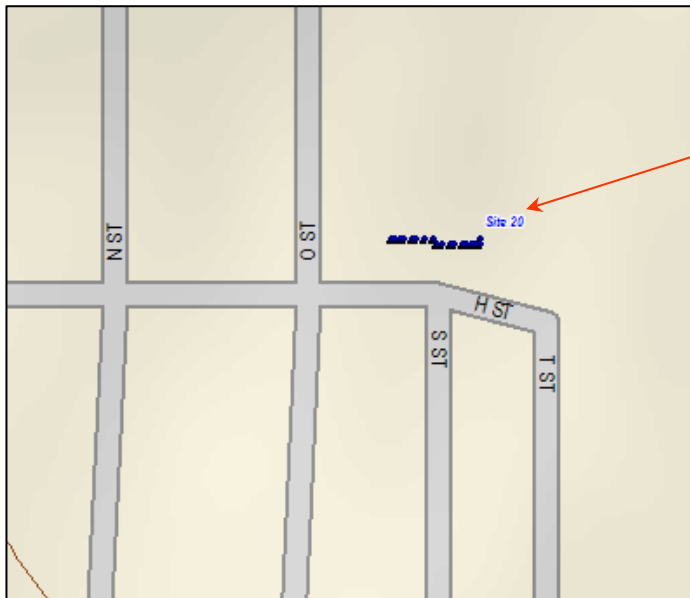
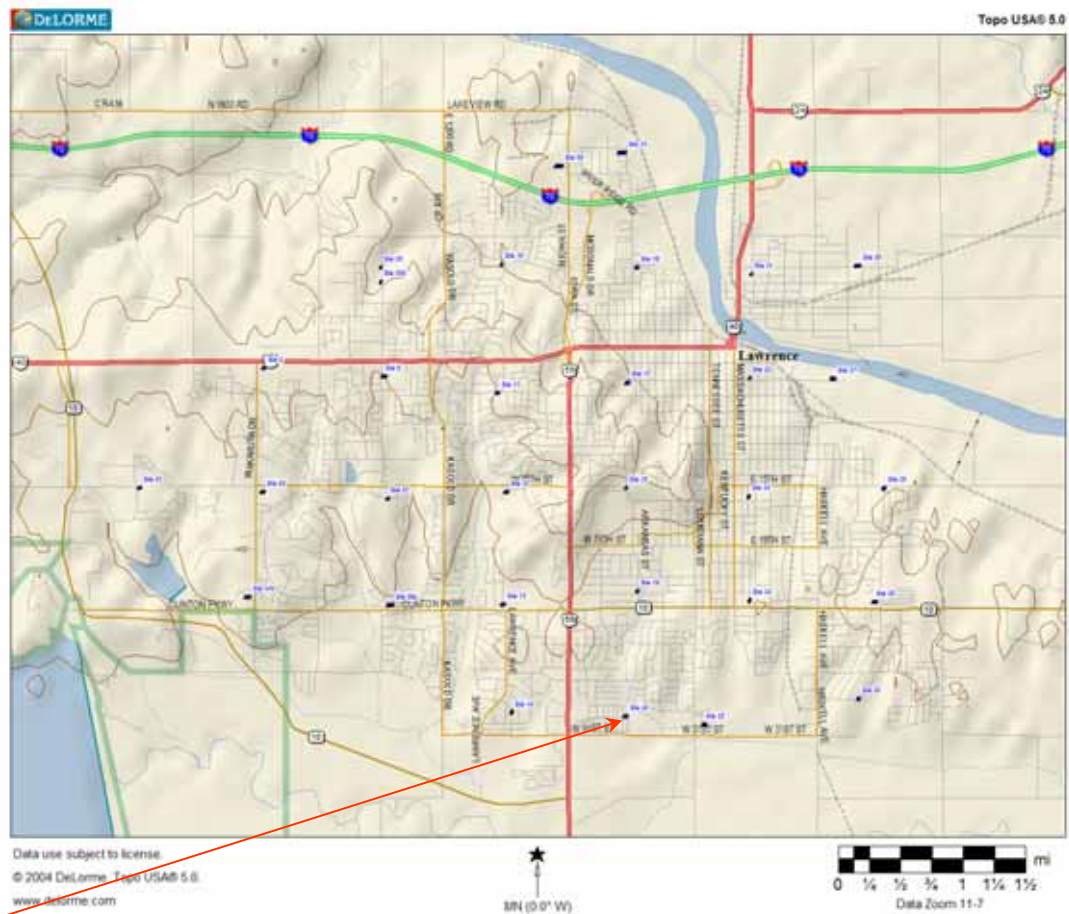
Pressure: 30.09"

Visibility: 10 miles

Winds: NE @ 11.5MPH

Conditions: Clear

68.13 dBuV/M
383.52' Average Elevation



Notes:

Antenna is vehicle mounted, 30' above ground level
Antenna oriented towards transmitter

The adjacent picture indicates the sample points of the test and is present in the logged information.

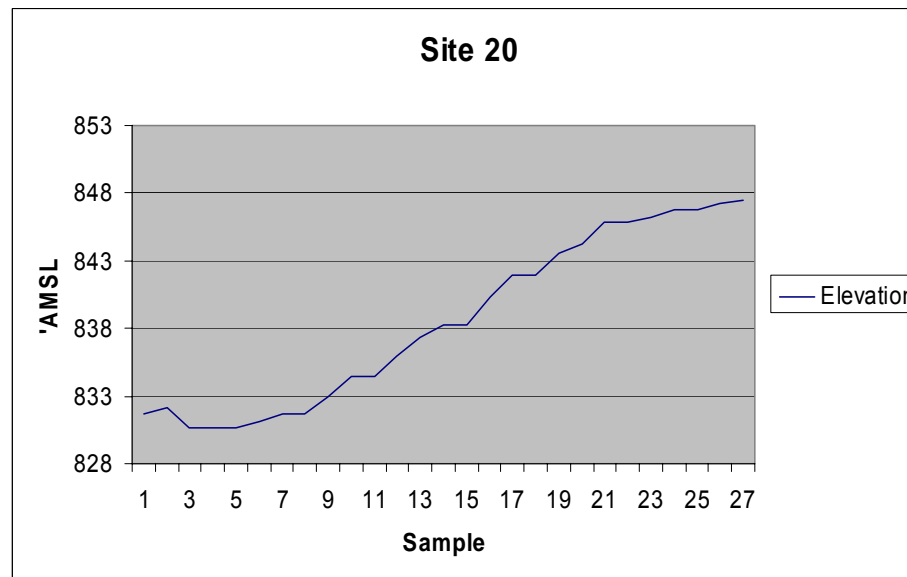
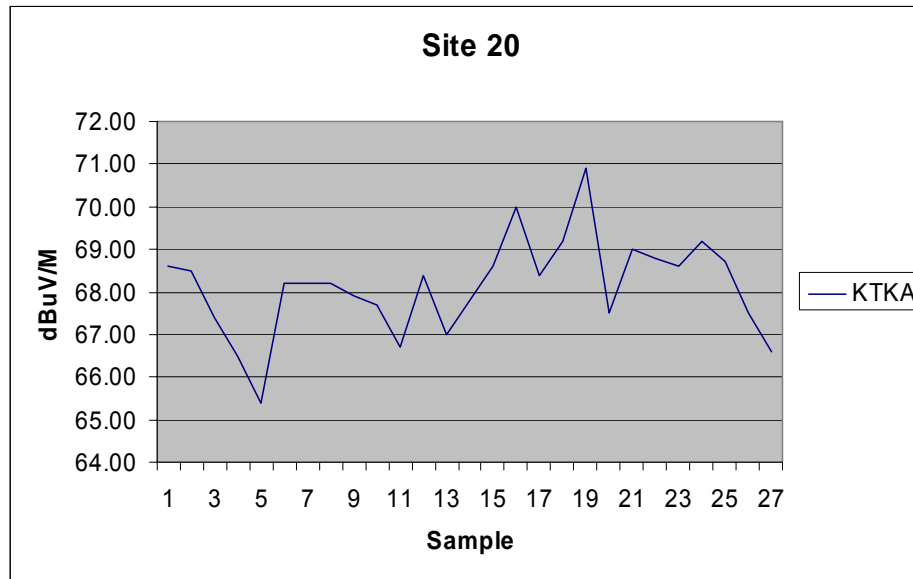
' JobName=KTKA2.dto
' JobFileVersion=1.02
' Locked=No
' IncludeComment=Yes
' FullDataRecords=Yes
' SignalUnits=dBuV/M
' SpaceUnits=English
' RFAmp=Off
' Bandwidth=WB
' DelayDimension=Time
' Delay=1

' FreqListLength=1

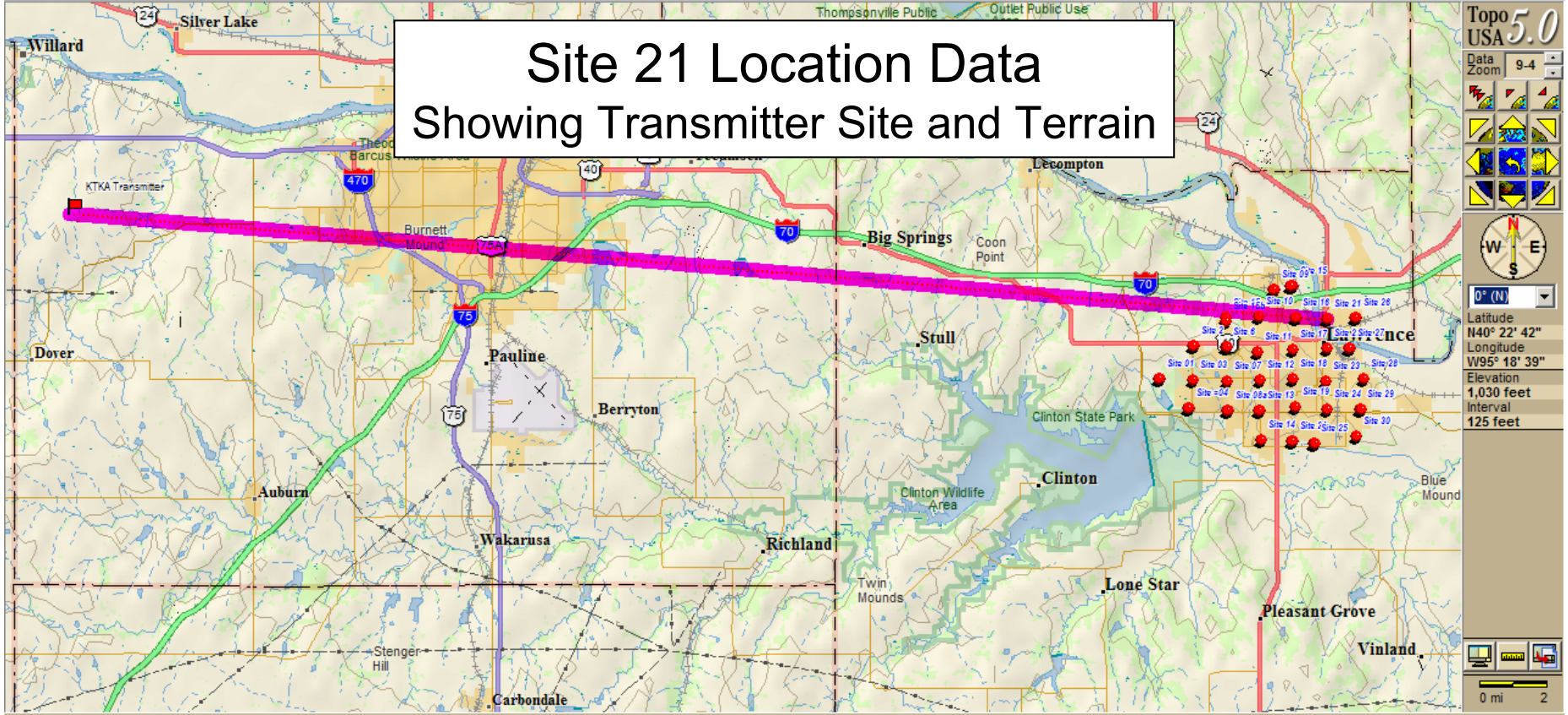
' Freq 1= 681 Freq 1 38.6 1839.5 27 Total dBuV divided by Count

' Comment=st20

| | | | Total | Count | | | | Avg | | | |
|-----------|----------|------------|--------------|----------|-----------|--------|------|------------|-----|---|-------|
| | | | 1839.5 | 27 | | | | Elevation | | | |
| | | | 68.13 dBuV/M | | | | | 838.52 | | | |
| 4/13/2005 | 18:06:54 | 681.25 MHz | 68.6 dBuV/M | 38.93022 | -95.25182 | Freq 1 | 38.6 | 831.7 Feet | Deg | 1 | 8 1.4 |
| 4/13/2005 | 18:06:56 | 681.25 MHz | 68.5 dBuV/M | 38.93022 | -95.25182 | Freq 1 | 38.6 | 832.1 Feet | Deg | 1 | 8 1.4 |
| 4/13/2005 | 18:06:57 | 681.25 MHz | 67.4 dBuV/M | 38.9302 | -95.25182 | Freq 1 | 38.6 | 830.7 Feet | Deg | 1 | 8 1.4 |
| 4/13/2005 | 18:06:59 | 681.25 MHz | 66.5 dBuV/M | 38.9302 | -95.25182 | Freq 1 | 38.6 | 830.7 Feet | Deg | 1 | 8 1.4 |
| 4/13/2005 | 18:07:00 | 681.25 MHz | 65.4 dBuV/M | 38.9302 | -95.25182 | Freq 1 | 38.6 | 830.7 Feet | Deg | 1 | 8 1.4 |
| 4/13/2005 | 18:07:01 | 681.25 MHz | 68.2 dBuV/M | 38.9302 | -95.25183 | Freq 1 | 38.6 | 831.1 Feet | Deg | 1 | 8 1.7 |
| 4/13/2005 | 18:07:03 | 681.25 MHz | 68.2 dBuV/M | 38.9302 | -95.25185 | Freq 1 | 38.6 | 831.7 Feet | Deg | 1 | 8 2 |
| 4/13/2005 | 18:07:04 | 681.25 MHz | 68.2 dBuV/M | 38.9302 | -95.25185 | Freq 1 | 38.6 | 831.7 Feet | Deg | 1 | 8 2 |
| 4/13/2005 | 18:07:06 | 681.25 MHz | 67.9 dBuV/M | 38.9302 | -95.25187 | Freq 1 | 38.6 | 833 Feet | Deg | 1 | 8 1.7 |
| 4/13/2005 | 18:07:07 | 681.25 MHz | 67.7 dBuV/M | 38.9302 | -95.25188 | Freq 1 | 38.6 | 834.4 Feet | Deg | 1 | 8 1.4 |
| 4/13/2005 | 18:07:09 | 681.25 MHz | 66.7 dBuV/M | 38.9302 | -95.25188 | Freq 1 | 38.6 | 834.4 Feet | Deg | 1 | 8 1.4 |
| 4/13/2005 | 18:07:10 | 681.25 MHz | 68.4 dBuV/M | 38.9302 | -95.25192 | Freq 1 | 38.6 | 836 Feet | Deg | 1 | 8 1.4 |
| 4/13/2005 | 18:07:12 | 681.25 MHz | 67 dBuV/M | 38.9302 | -95.25193 | Freq 1 | 38.6 | 837.3 Feet | Deg | 1 | 8 1.4 |
| 4/13/2005 | 18:07:13 | 681.25 MHz | 67.8 dBuV/M | 38.9302 | -95.25197 | Freq 1 | 38.6 | 838.3 Feet | Deg | 1 | 8 1.7 |
| 4/13/2005 | 18:07:14 | 681.25 MHz | 68.6 dBuV/M | 38.9302 | -95.25197 | Freq 1 | 38.6 | 838.3 Feet | Deg | 1 | 8 1.7 |
| 4/13/2005 | 18:07:16 | 681.25 MHz | 70 dBuV/M | 38.9302 | -95.25198 | Freq 1 | 38.6 | 840.3 Feet | Deg | 1 | 7 1.4 |
| 4/13/2005 | 18:07:17 | 681.25 MHz | 68.4 dBuV/M | 38.93022 | -95.252 | Freq 1 | 38.6 | 841.9 Feet | Deg | 1 | 8 1.2 |
| 4/13/2005 | 18:07:19 | 681.25 MHz | 69.2 dBuV/M | 38.93022 | -95.252 | Freq 1 | 38.6 | 841.9 Feet | Deg | 1 | 8 1.2 |
| 4/13/2005 | 18:07:20 | 681.25 MHz | 70.9 dBuV/M | 38.93022 | -95.25203 | Freq 1 | 38.6 | 843.5 Feet | Deg | 1 | 8 1.3 |
| 4/13/2005 | 18:07:22 | 681.25 MHz | 67.5 dBuV/M | 38.93022 | -95.25207 | Freq 1 | 38.6 | 844.2 Feet | Deg | 1 | 8 1.7 |
| 4/13/2005 | 18:07:23 | 681.25 MHz | 69 dBuV/M | 38.93022 | -95.25208 | Freq 1 | 38.6 | 845.8 Feet | Deg | 1 | 8 1.8 |
| 4/13/2005 | 18:07:24 | 681.25 MHz | 68.8 dBuV/M | 38.93022 | -95.25208 | Freq 1 | 38.6 | 845.8 Feet | Deg | 1 | 8 1.8 |
| 4/13/2005 | 18:07:26 | 681.25 MHz | 68.6 dBuV/M | 38.93022 | -95.25212 | Freq 1 | 38.6 | 846.2 Feet | Deg | 1 | 8 1.7 |
| 4/13/2005 | 18:07:27 | 681.25 MHz | 69.2 dBuV/M | 38.93022 | -95.25213 | Freq 1 | 38.6 | 846.8 Feet | Deg | 1 | 8 1.6 |
| 4/13/2005 | 18:07:29 | 681.25 MHz | 68.7 dBuV/M | 38.93022 | -95.25213 | Freq 1 | 38.6 | 846.8 Feet | Deg | 1 | 8 1.6 |
| 4/13/2005 | 18:07:30 | 681.25 MHz | 67.5 dBuV/M | 38.93022 | -95.25215 | Freq 1 | 38.6 | 847.2 Feet | Deg | 1 | 8 1.9 |
| 4/13/2005 | 18:07:32 | 681.25 MHz | 66.6 dBuV/M | 38.93022 | -95.25217 | Freq 1 | 38.6 | 847.5 Feet | Deg | 1 | 8 1.8 |



Site 21 Location Data Showing Transmitter Site and Terrain



Topo USA 5.0

Data Zoom 9-4

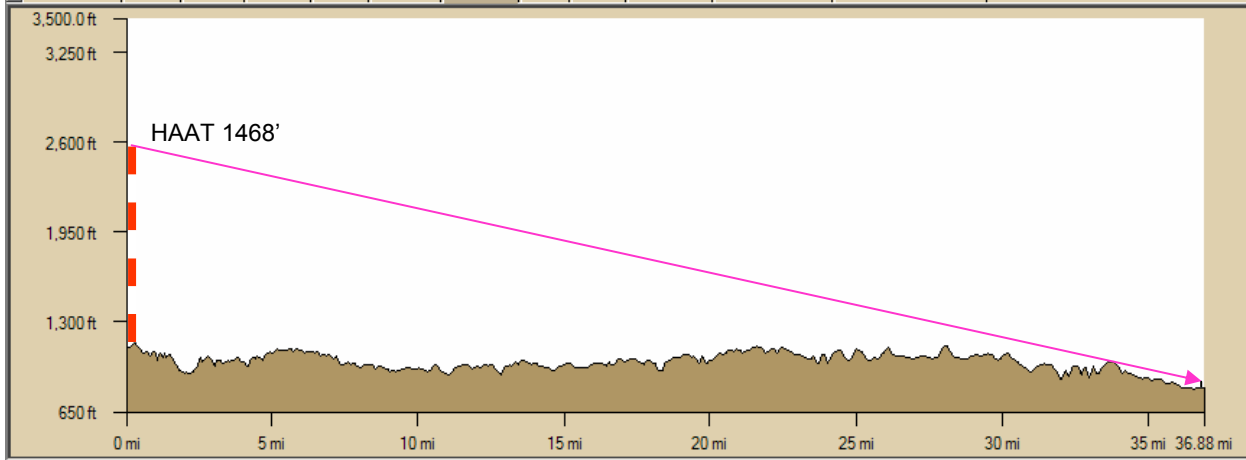
Latitude N40° 22' 42"

Longitude W95° 18' 39"

Elevation 1,030 feet

Interval 125 feet

Map Files Find Print Draw GPS Route Profile 3-D Info NetLink Map Display Handheld Export



Latitude: N38° 58' 53.34"

Longitude: W95° 13' 59.82"

Lin Dist: 36.85 mi

Terr Dist: 36.88 mi

Climb Dist: 17.60 mi

Desc Dist: 19.09 mi

Elev: 819.7 ft

Elev Gain: -306.6 ft

Climb Elev: 2,877.5 ft

Desc Elev: 3,184.1 ft

Grade: 3

Avg Grade: 3

☐ Show Text

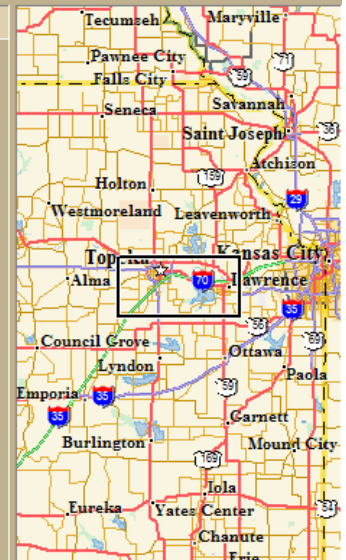
Manual Scale

☒ Max Elev 3500.00 ft

☐ Min Elev 820.01 ft

☒ Increase Res On Scale

Reverse Clear More



Location: Site 21

Date: 13 April 2005

Time: 1411

Temperature: 64°F

Dew Point: 39°F

Humidity: 40%

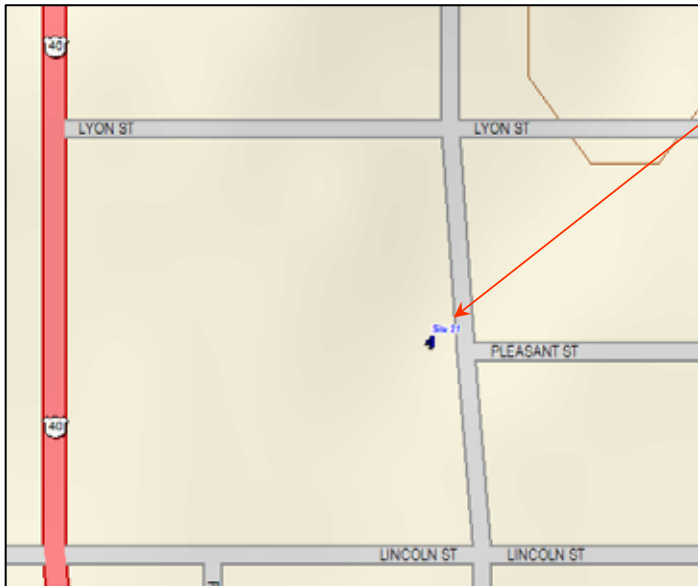
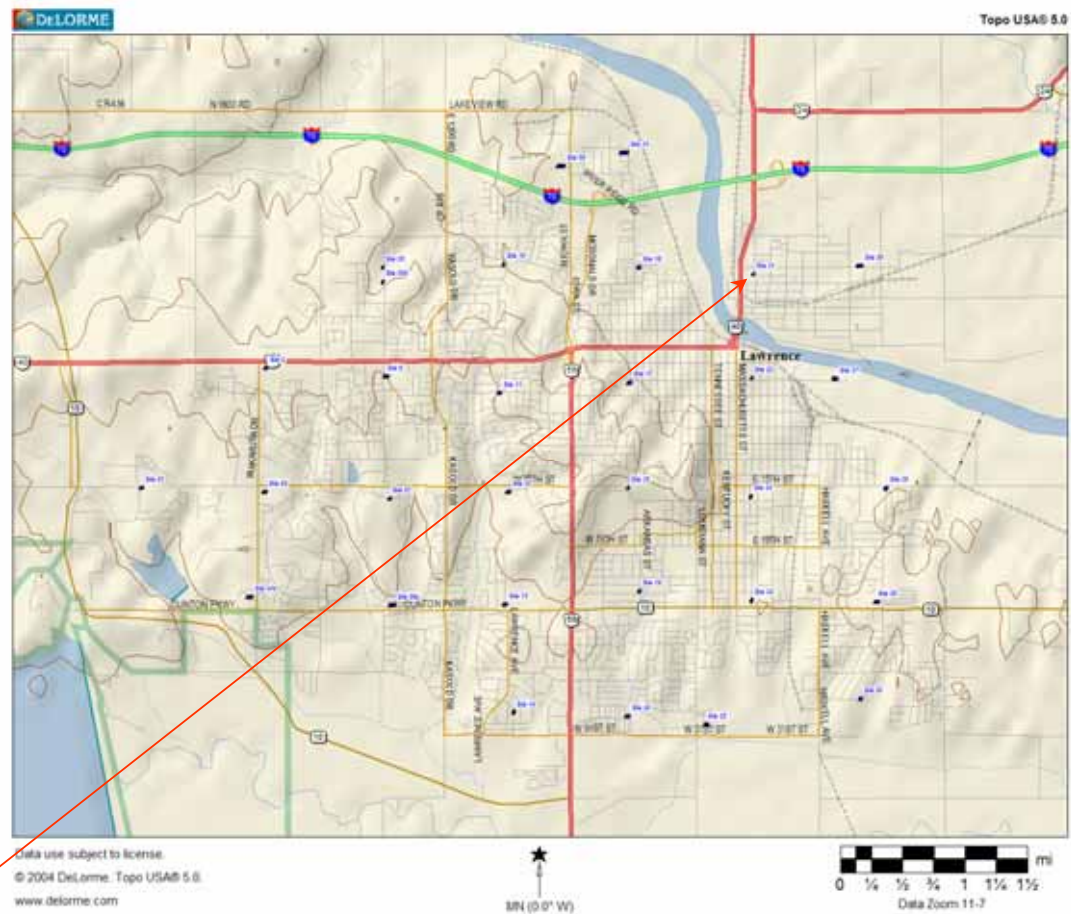
Pressure: 30.08"

Visibility: 10 miles

Winds: NE @ 16.1MPH

Conditions: Clear

55.40 dBuV/M
874.88' Average Elevation

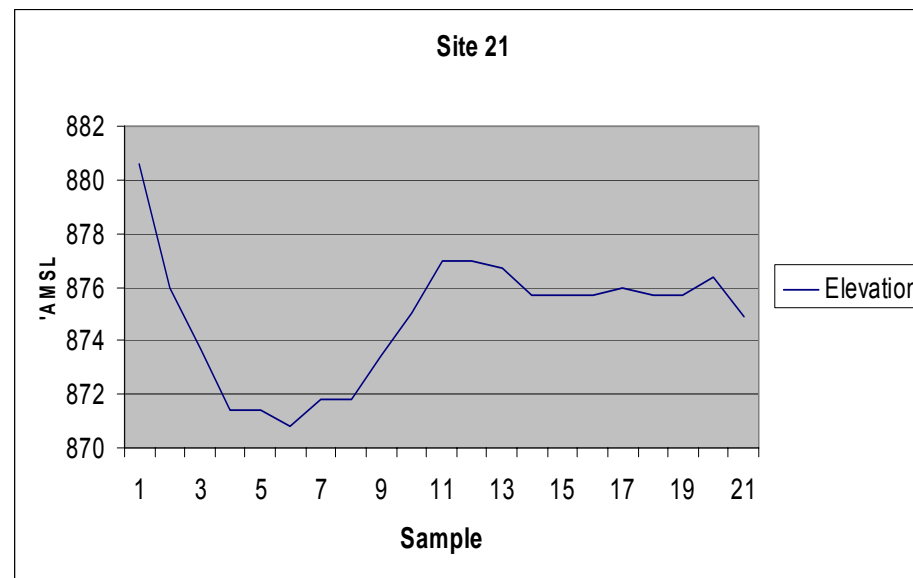
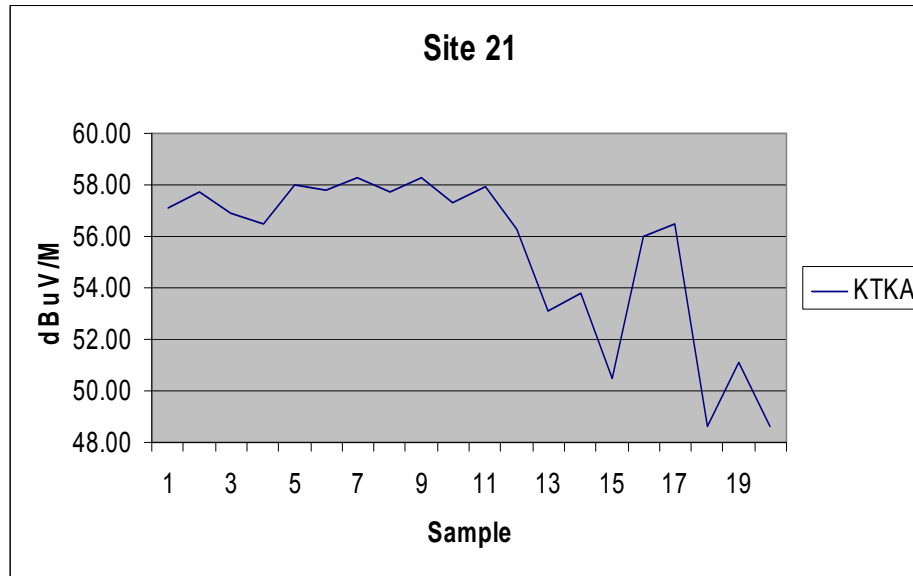


Notes:

Antenna is vehicle mounted, 30' above ground level
Antenna oriented towards transmitter

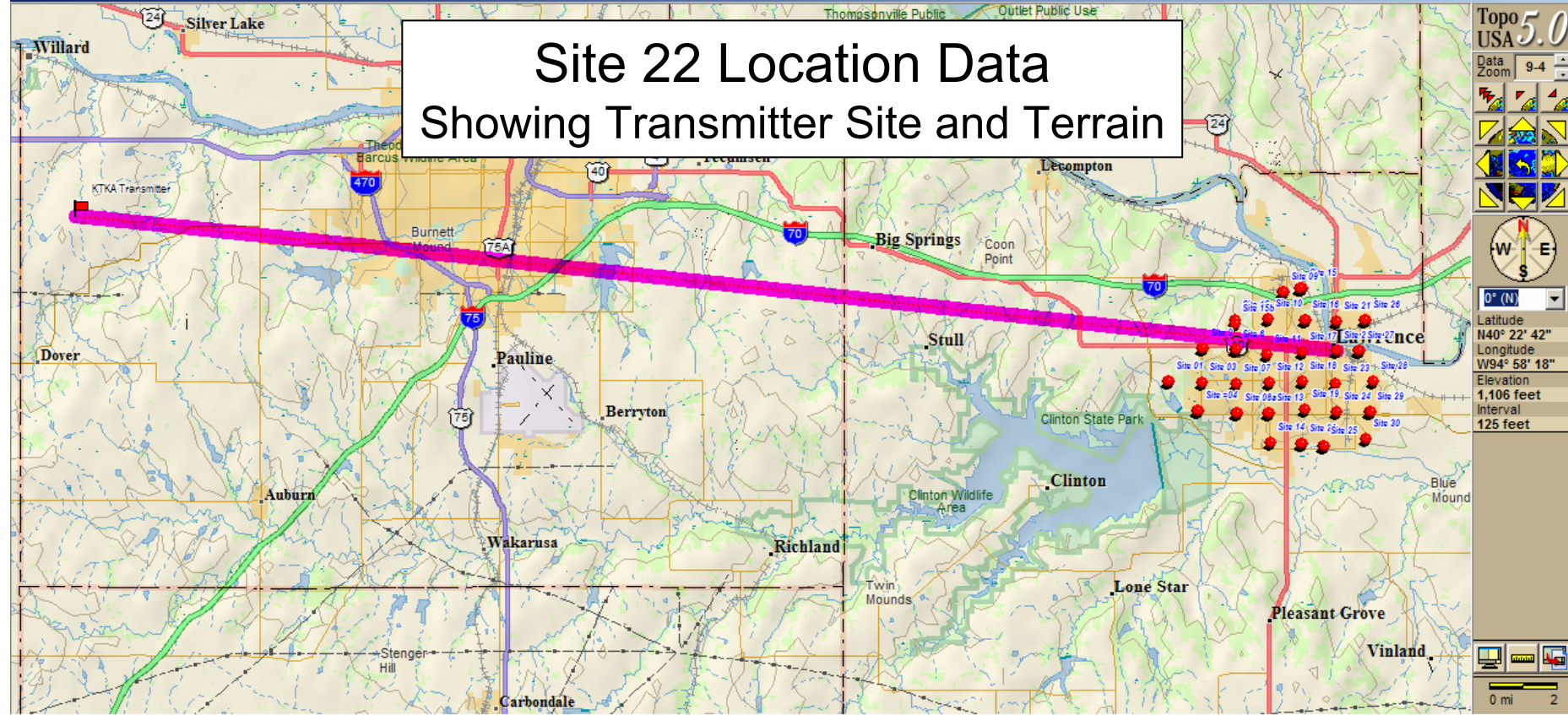
Location did not afford the opportunity to perform a drag test

The adjacent picture indicates the sample points of the test and is present in the logged information.



Site 22 Location Data

Showing Transmitter Site and Terrain



Topo USA 5.0

Data Zoom 9-4

Latitude N40° 22' 42"

Longitude W94° 58' 18"

Elevation 1,106 feet

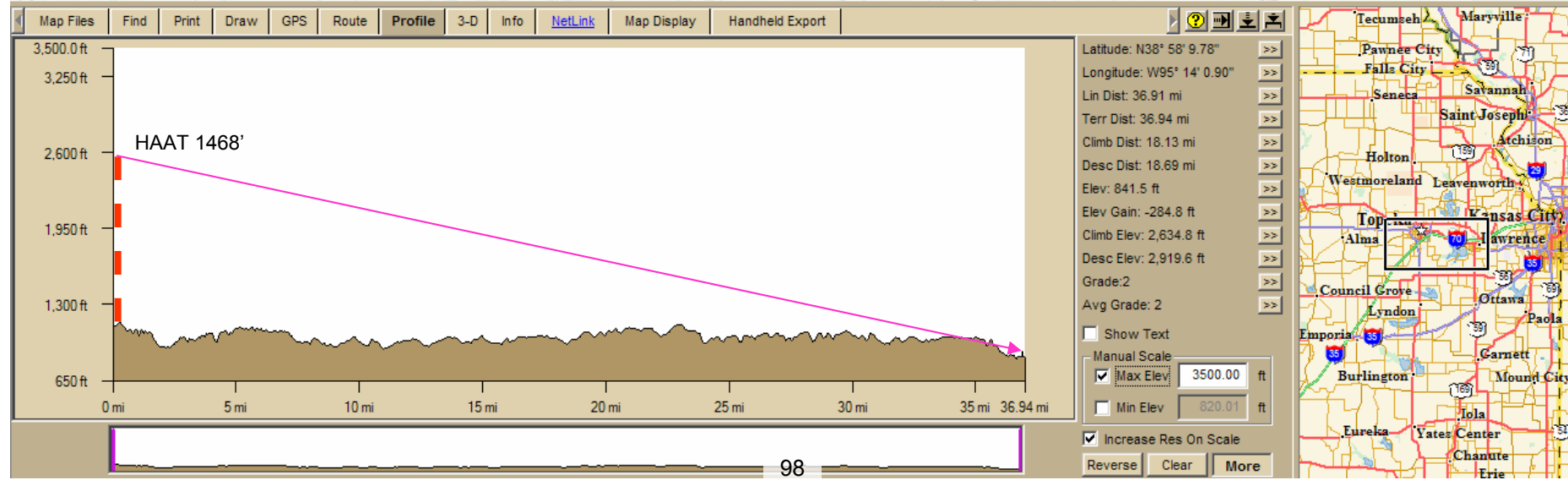
Interval 125 feet

0° (N)

W E

S

0 mi 2



Location: Site 22

Date: 13 April 2005

Time: 1432

Temperature: 64°F

Dew Point: 39°F

Humidity: 40%

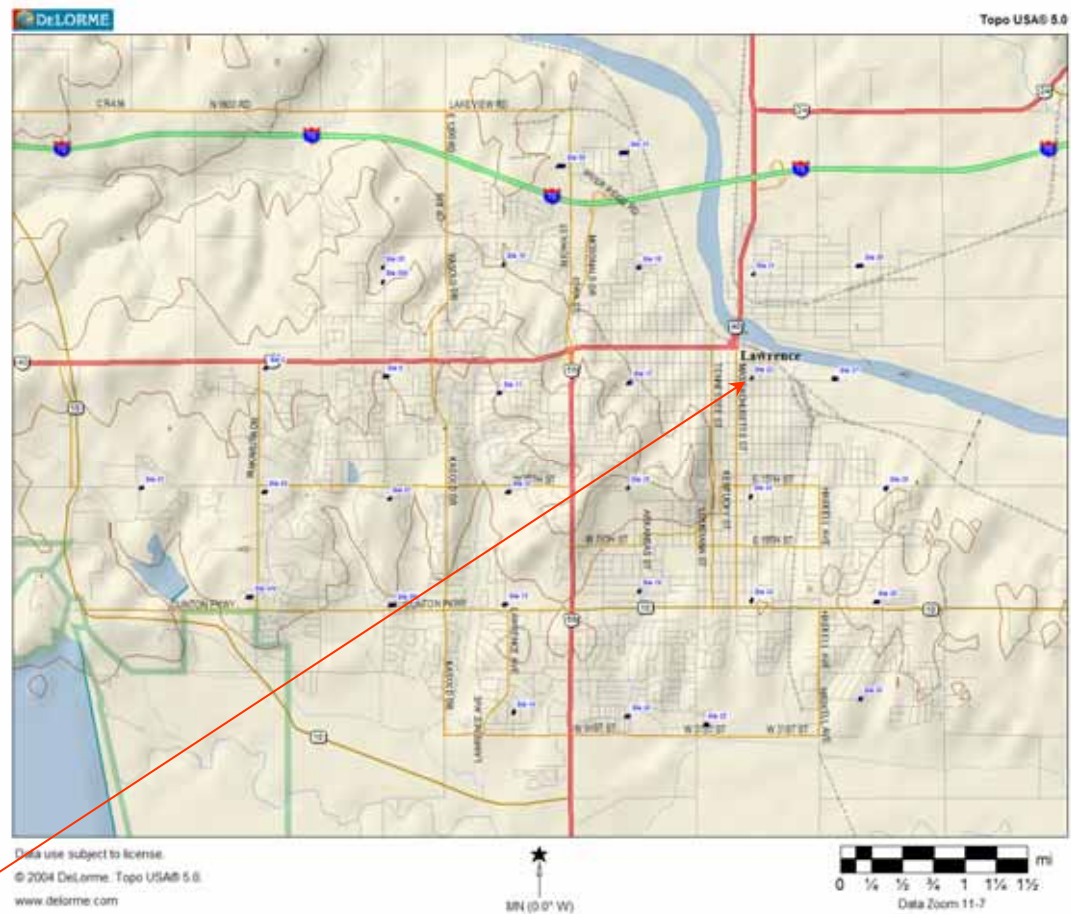
Pressure: 30.08"

Visibility: 10 miles

Winds: NE @ 16.1MPH

Conditions: Clear

58.83 dBuV/M
891.32' Average Elevation



Notes:

Antenna is vehicle mounted, 30' above ground level
Antenna oriented towards transmitter

Location did not afford us an opportunity for a drag test due to high traffic congestion

The adjacent picture indicates the sample points of the test and is present in the logged information.

' JobName=KTKA2.dto
 ' JobFileVersion=1.02
 ' Locked=No
 ' IncludeComment=Yes
 ' FullDataRecords=Yes
 ' SignalUnits=dBuV/M
 ' SpaceUnits=English
 ' RFamp=Off
 ' Bandwidth=WB
 ' DelayDimension=Time
 ' Delay=1

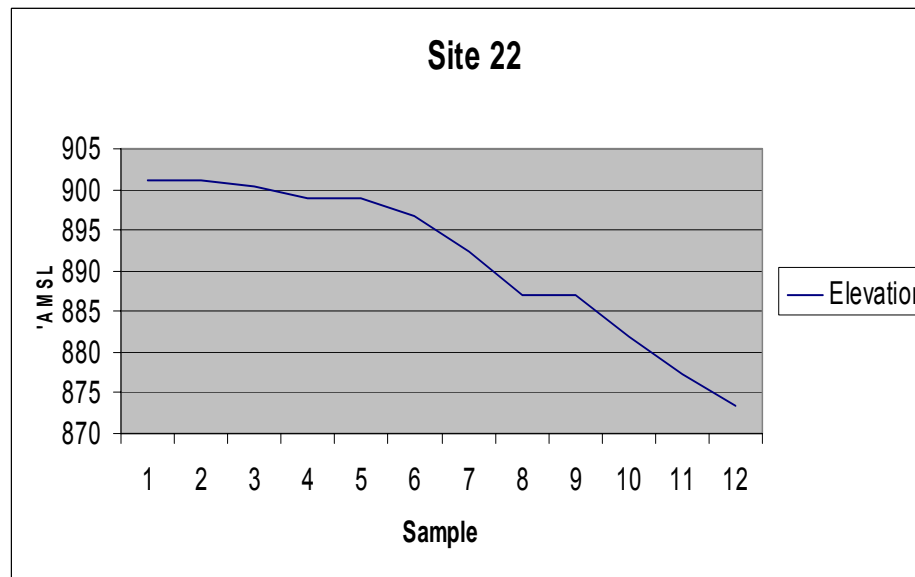
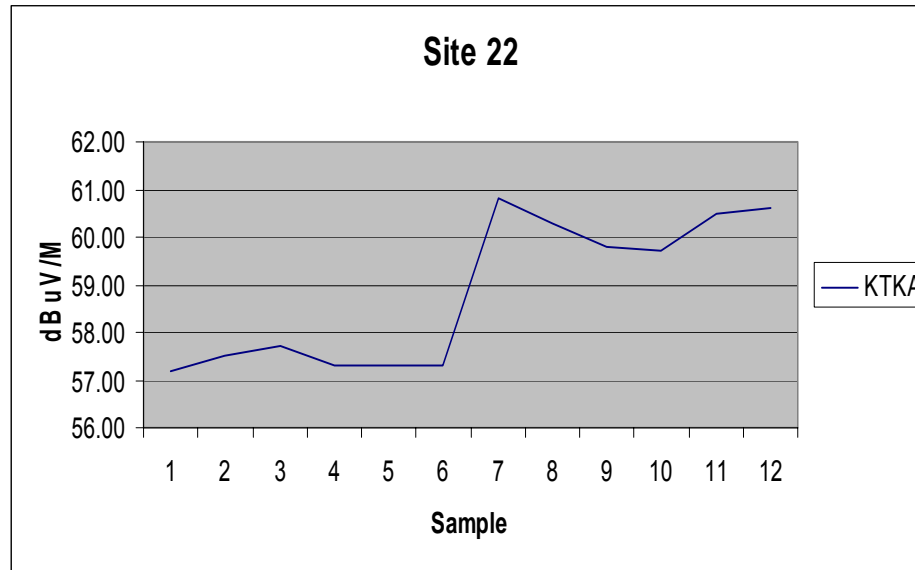
' FreqListLength=1

' Freq 1= 681 Freq 1 38.6 Total Count 12 Total dBuV divided by Count

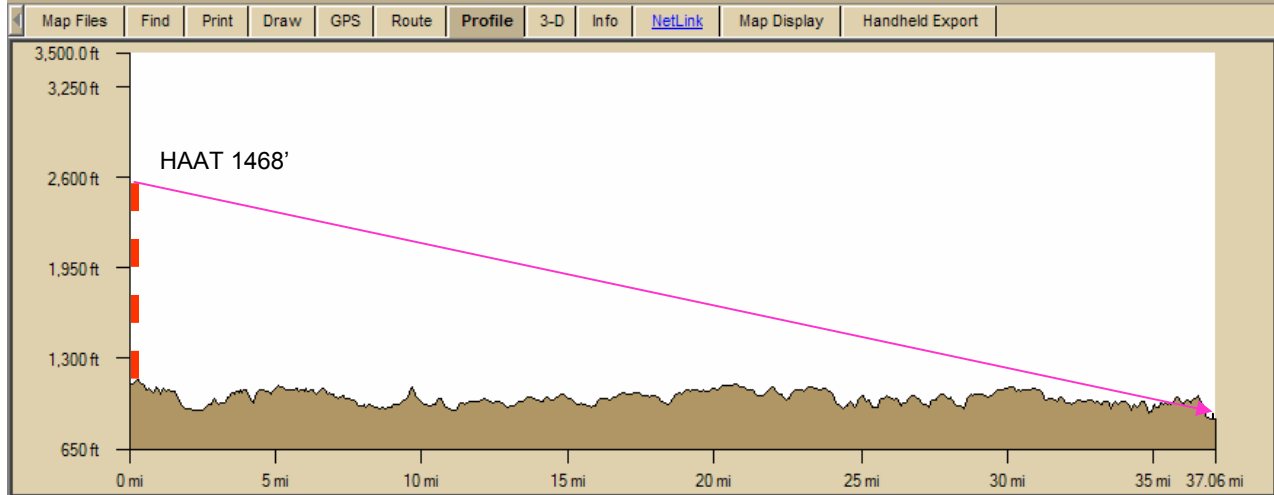
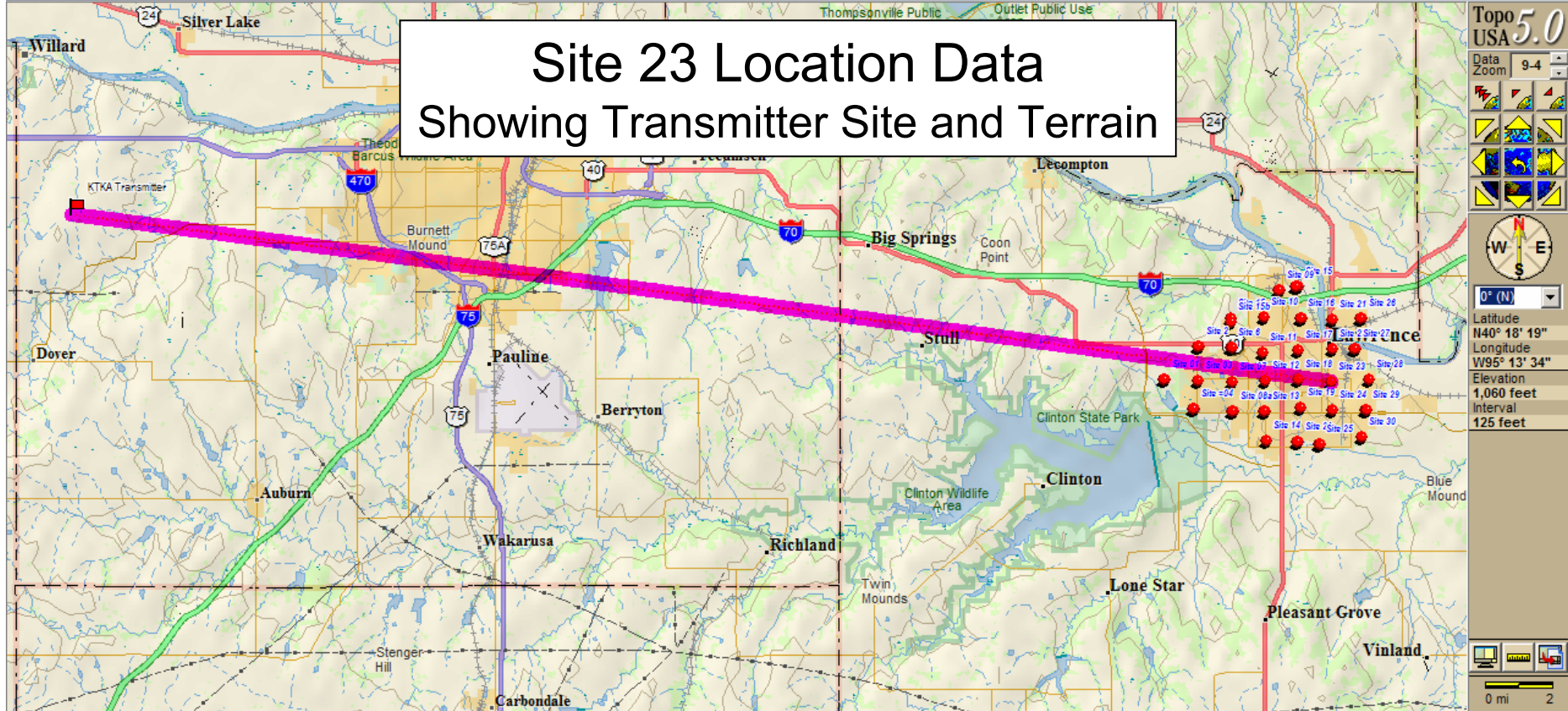
' Comment=st22

Avg
Elevation
58.83 dBuV/M 891.32

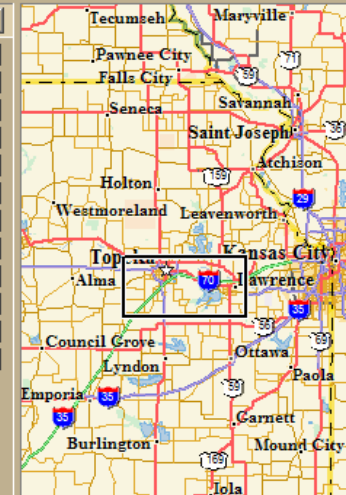
| Date | Time | Freq | Level | Lat | Long | Freq | Level | Elev | Unit | Dir | Mag | Mag |
|-----------|----------|------------|-------------|----------|-----------|--------|-------|------------|------|-----|-----|-----|
| 4/13/2005 | 14:32:18 | 681.25 MHz | 57.2 dBuV/M | 38.96938 | -95.23358 | Freq 1 | 38.6 | 901 Feet | Deg | 1 | 8 | 1.1 |
| 4/13/2005 | 14:32:19 | 681.25 MHz | 57.5 dBuV/M | 38.96938 | -95.23358 | Freq 1 | 38.6 | 901 Feet | Deg | 1 | 8 | 1.1 |
| 4/13/2005 | 14:32:21 | 681.25 MHz | 57.7 dBuV/M | 38.96938 | -95.23358 | Freq 1 | 38.6 | 900.3 Feet | Deg | 1 | 8 | 1.1 |
| 4/13/2005 | 14:32:22 | 681.25 MHz | 57.3 dBuV/M | 38.96938 | -95.23358 | Freq 1 | 38.6 | 899 Feet | Deg | 1 | 8 | 1.1 |
| 4/13/2005 | 14:32:23 | 681.25 MHz | 57.3 dBuV/M | 38.96938 | -95.23358 | Freq 1 | 38.6 | 899 Feet | Deg | 1 | 8 | 1.1 |
| 4/13/2005 | 14:32:25 | 681.25 MHz | 57.3 dBuV/M | 38.96938 | -95.23358 | Freq 1 | 38.6 | 896.7 Feet | Deg | 1 | 8 | 1.1 |
| 4/13/2005 | 14:32:26 | 681.25 MHz | 60.8 dBuV/M | 38.96938 | -95.23357 | Freq 1 | 38.6 | 892.4 Feet | Deg | 1 | 8 | 1.1 |
| 4/13/2005 | 14:32:28 | 681.25 MHz | 60.3 dBuV/M | 38.96938 | -95.23357 | Freq 1 | 38.6 | 886.9 Feet | Deg | 1 | 8 | 1.1 |
| 4/13/2005 | 14:32:29 | 681.25 MHz | 59.8 dBuV/M | 38.96938 | -95.23357 | Freq 1 | 38.6 | 886.9 Feet | Deg | 1 | 8 | 1.1 |
| 4/13/2005 | 14:32:31 | 681.25 MHz | 59.7 dBuV/M | 38.96938 | -95.23358 | Freq 1 | 38.6 | 881.9 Feet | Deg | 1 | 8 | 1.2 |
| 4/13/2005 | 14:32:32 | 681.25 MHz | 60.5 dBuV/M | 38.96938 | -95.23358 | Freq 1 | 38.6 | 877.3 Feet | Deg | 1 | 8 | 1.1 |
| 4/13/2005 | 14:32:34 | 681.25 MHz | 60.6 dBuV/M | 38.96938 | -95.23358 | Freq 1 | 38.6 | 873.4 Feet | Deg | 1 | 8 | 1.2 |



Site 23 Location Data Showing Transmitter Site and Terrain



| | |
|---|------------|
| Latitude: N38° 57' 20.28" | >> |
| Longitude: W95° 14' 1.14" | >> |
| Lin Dist: 37.03 mi | >> |
| Terr Dist: 37.06 mi | >> |
| Climb Dist: 18.22 mi | >> |
| Desc Dist: 18.84 mi | >> |
| Elev: 862.0 ft | >> |
| Elev Gain: -264.3 ft | >> |
| Climb Elev: 2,871.8 ft | >> |
| Desc Elev: 3,136.1 ft | >> |
| Grade: 3 | >> |
| Avg Grade: 3 | >> |
| <input type="checkbox"/> Show Text | |
| Manual Scale | |
| <input checked="" type="checkbox"/> Max Elev | 3500.00 ft |
| <input type="checkbox"/> Min Elev | 820.01 ft |
| <input checked="" type="checkbox"/> Increase Res On Scale | |
| Reverse | Clear |
| More | |



Location: Site 23

Date: 13 April 2005

Time: 1609

Temperature: 66.9°F

Dew Point: 39.9°F

Humidity: 37%

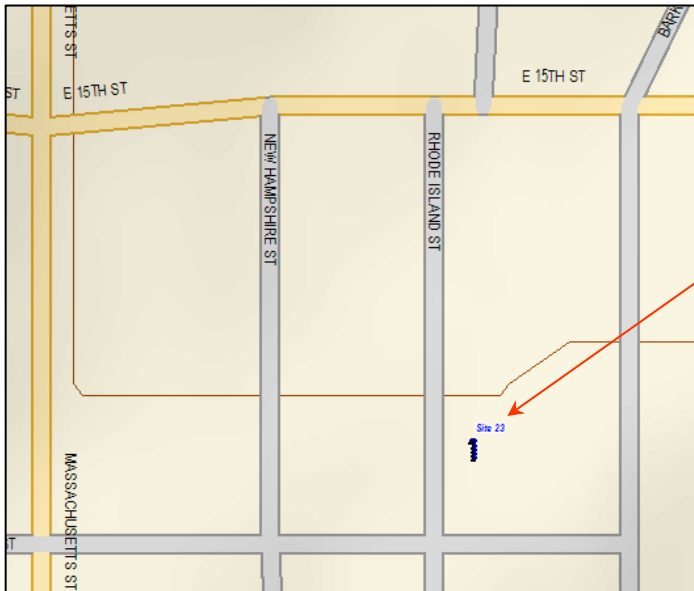
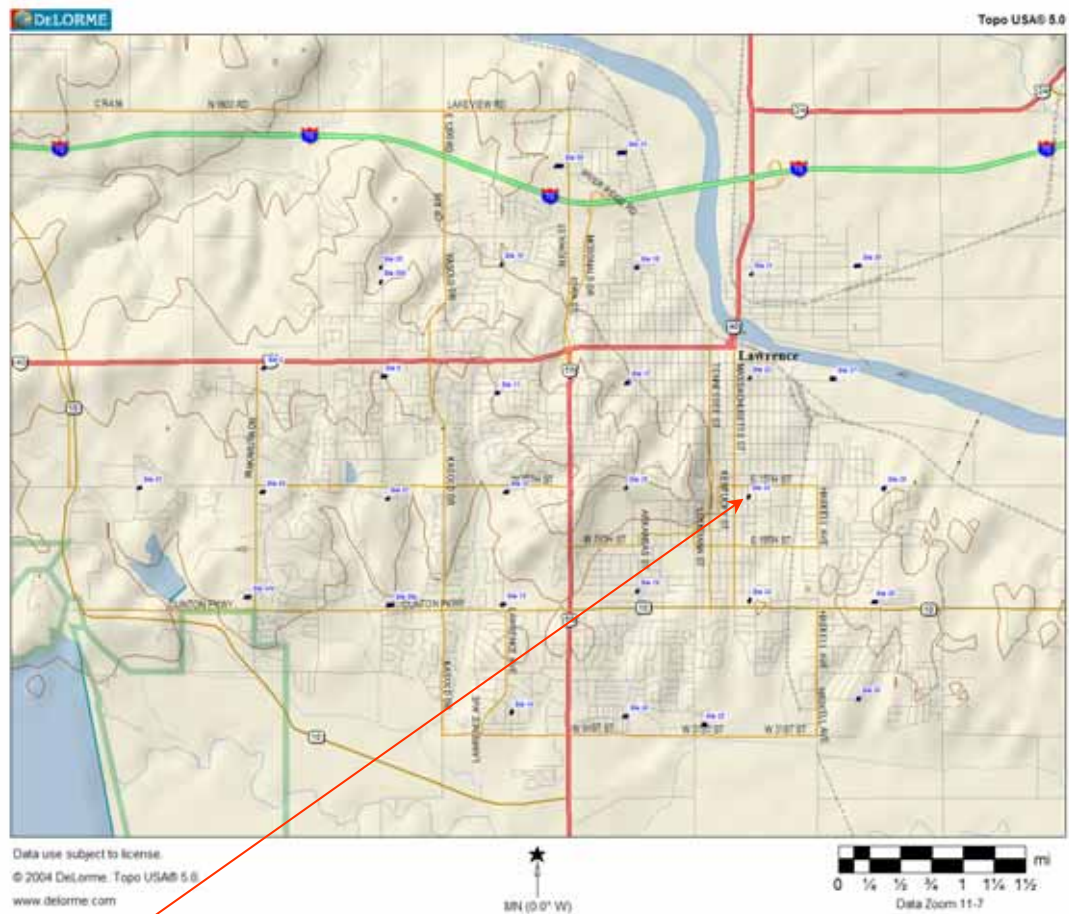
Pressure: 30.06"

Visibility: 10 miles

Winds: NE @ 13.8MPH

Conditions: Clear

57.10 dBuV/M
896.34' Average Elevation



Notes:

Antenna is vehicle mounted, 30' above ground level
Antenna oriented towards transmitter

The adjacent picture indicates the sample points of the test and is present in the logged information.

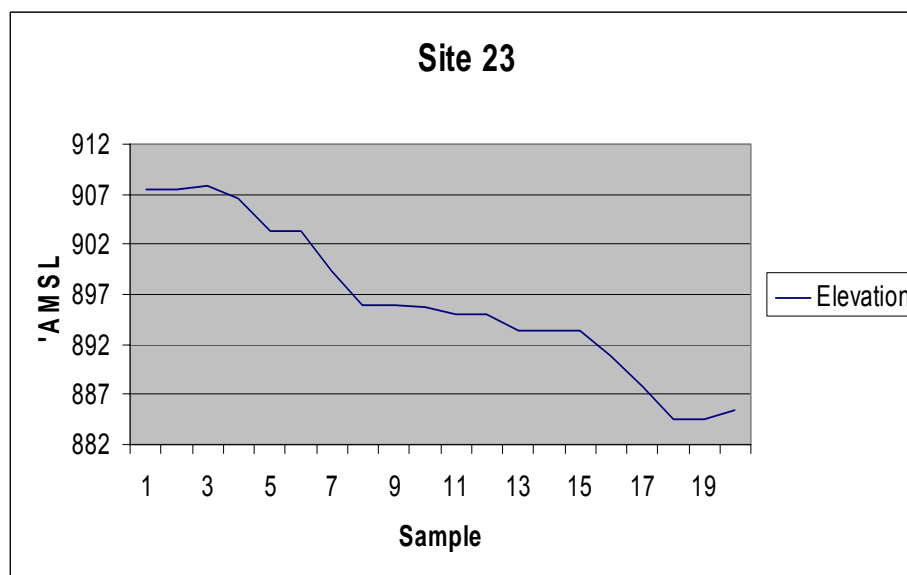
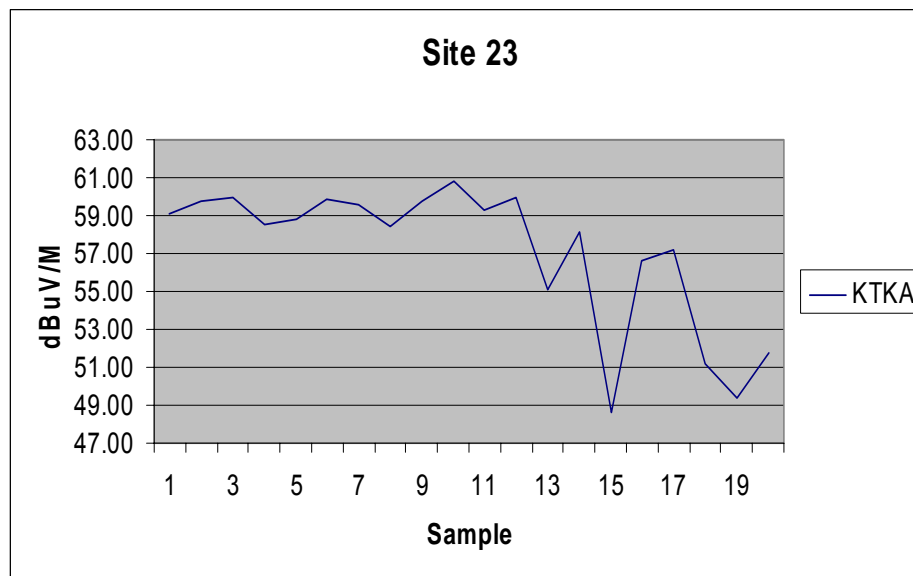
' JobName=KTKA2.dto
 ' JobFileVersion=1.02
 ' Locked=No
 ' IncludeComment=Yes
 ' FullDataRecords=Yes
 ' SignalUnits=dBuV/M
 ' SpaceUnits=English
 ' RFAmp=Off
 ' Bandwidth=WB
 ' DelayDimension=Time
 ' Delay=1

' FreqListLength=1

' Freq 1= 681 Freq 1 38.6 Total Count 1142 20 Total dBuV divided by Count

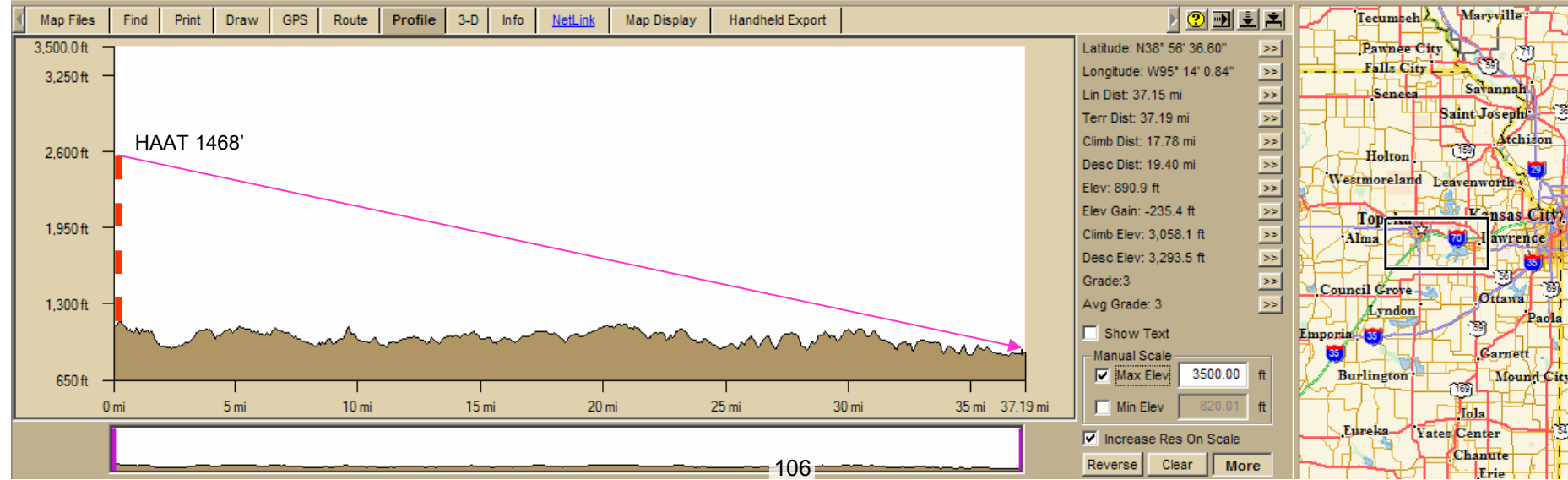
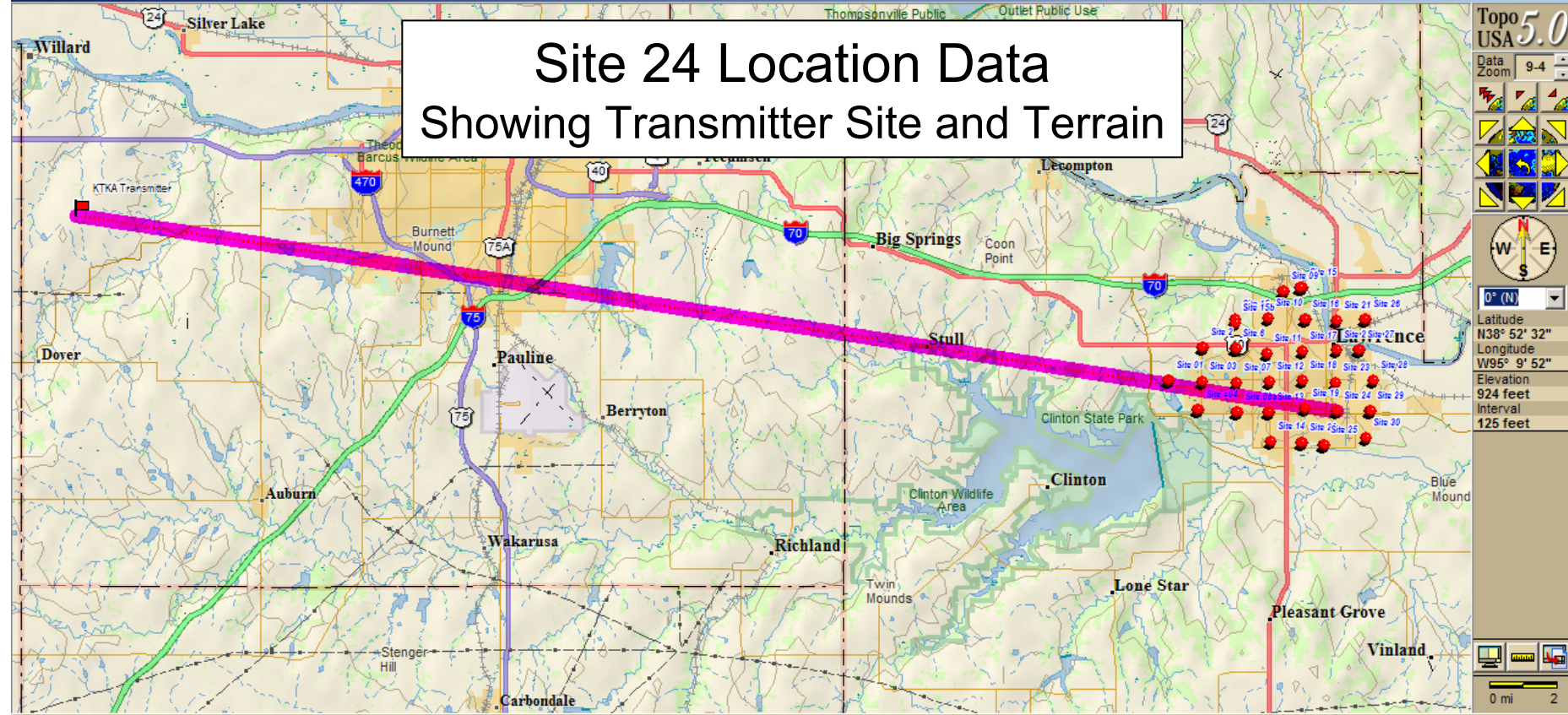
' Comment=st23

| | | 57.10 dBuV/M | | | | 896.34 | | | | |
|-----------|----------|--------------|-------------|----------|------------------|--------|------------|-----|---|-------|
| 4/13/2005 | 16:09:41 | 681.25 MHz | 59.1 dBuV/M | 38.9557 | -95.23367 Freq 1 | 38.6 | 907.5 Feet | Deg | 1 | 7 1.6 |
| 4/13/2005 | 16:09:42 | 681.25 MHz | 59.8 dBuV/M | 38.9557 | -95.23367 Freq 1 | 38.6 | 907.5 Feet | Deg | 1 | 7 1.6 |
| 4/13/2005 | 16:09:44 | 681.25 MHz | 60 dBuV/M | 38.9557 | -95.23367 Freq 1 | 38.6 | 907.9 Feet | Deg | 1 | 7 1.6 |
| 4/13/2005 | 16:09:45 | 681.25 MHz | 58.5 dBuV/M | 38.9557 | -95.23367 Freq 1 | 38.6 | 906.5 Feet | Deg | 1 | 7 1.7 |
| 4/13/2005 | 16:09:47 | 681.25 MHz | 58.8 dBuV/M | 38.9557 | -95.23365 Freq 1 | 38.6 | 903.3 Feet | Deg | 1 | 6 1.6 |
| 4/13/2005 | 16:09:48 | 681.25 MHz | 59.9 dBuV/M | 38.9557 | -95.23365 Freq 1 | 38.6 | 903.3 Feet | Deg | 1 | 6 1.6 |
| 4/13/2005 | 16:09:49 | 681.25 MHz | 59.6 dBuV/M | 38.9557 | -95.23365 Freq 1 | 38.6 | 899.3 Feet | Deg | 1 | 6 1.7 |
| 4/13/2005 | 16:09:51 | 681.25 MHz | 58.4 dBuV/M | 38.9557 | -95.23365 Freq 1 | 38.6 | 896 Feet | Deg | 1 | 6 1.7 |
| 4/13/2005 | 16:09:52 | 681.25 MHz | 59.8 dBuV/M | 38.9557 | -95.23365 Freq 1 | 38.6 | 896 Feet | Deg | 1 | 6 1.7 |
| 4/13/2005 | 16:09:54 | 681.25 MHz | 60.8 dBuV/M | 38.9557 | -95.23365 Freq 1 | 38.6 | 895.7 Feet | Deg | 1 | 6 1.5 |
| 4/13/2005 | 16:09:55 | 681.25 MHz | 59.3 dBuV/M | 38.95568 | -95.23365 Freq 1 | 38.6 | 895.1 Feet | Deg | 1 | 7 1.6 |
| 4/13/2005 | 16:09:56 | 681.25 MHz | 60 dBuV/M | 38.95568 | -95.23365 Freq 1 | 38.6 | 895.1 Feet | Deg | 1 | 7 1.6 |
| 4/13/2005 | 16:09:58 | 681.25 MHz | 55.1 dBuV/M | 38.95568 | -95.23365 Freq 1 | 38.6 | 893.4 Feet | Deg | 1 | 8 1.9 |
| 4/13/2005 | 16:09:59 | 681.25 MHz | 58.1 dBuV/M | 38.95567 | -95.23365 Freq 1 | 38.6 | 893.4 Feet | Deg | 1 | 8 1.9 |
| 4/13/2005 | 16:10:00 | 681.25 MHz | 48.6 dBuV/M | 38.95567 | -95.23365 Freq 1 | 38.6 | 893.4 Feet | Deg | 1 | 8 1.9 |
| 4/13/2005 | 16:10:02 | 681.25 MHz | 56.6 dBuV/M | 38.95565 | -95.23365 Freq 1 | 38.6 | 890.8 Feet | Deg | 1 | 8 2.3 |
| 4/13/2005 | 16:10:03 | 681.25 MHz | 57.2 dBuV/M | 38.95565 | -95.23365 Freq 1 | 38.6 | 887.8 Feet | Deg | 1 | 8 2 |
| 4/13/2005 | 16:10:05 | 681.25 MHz | 51.2 dBuV/M | 38.95565 | -95.23365 Freq 1 | 38.6 | 884.6 Feet | Deg | 1 | 8 2.4 |
| 4/13/2005 | 16:10:06 | 681.25 MHz | 49.4 dBuV/M | 38.95565 | -95.23365 Freq 1 | 38.6 | 884.6 Feet | Deg | 1 | 8 2.4 |
| 4/13/2005 | 16:10:07 | 681.25 MHz | 51.8 dBuV/M | 38.95563 | -95.23365 Freq 1 | 38.6 | 885.5 Feet | Deg | 1 | 7 2.4 |



Site 24 Location Data

Showing Transmitter Site and Terrain



Location: Site 24

Date: 13 April 2005

Time: 1600

Temperature: 66.9°F

Dew Point: 39.9°F

Humidity: 37%

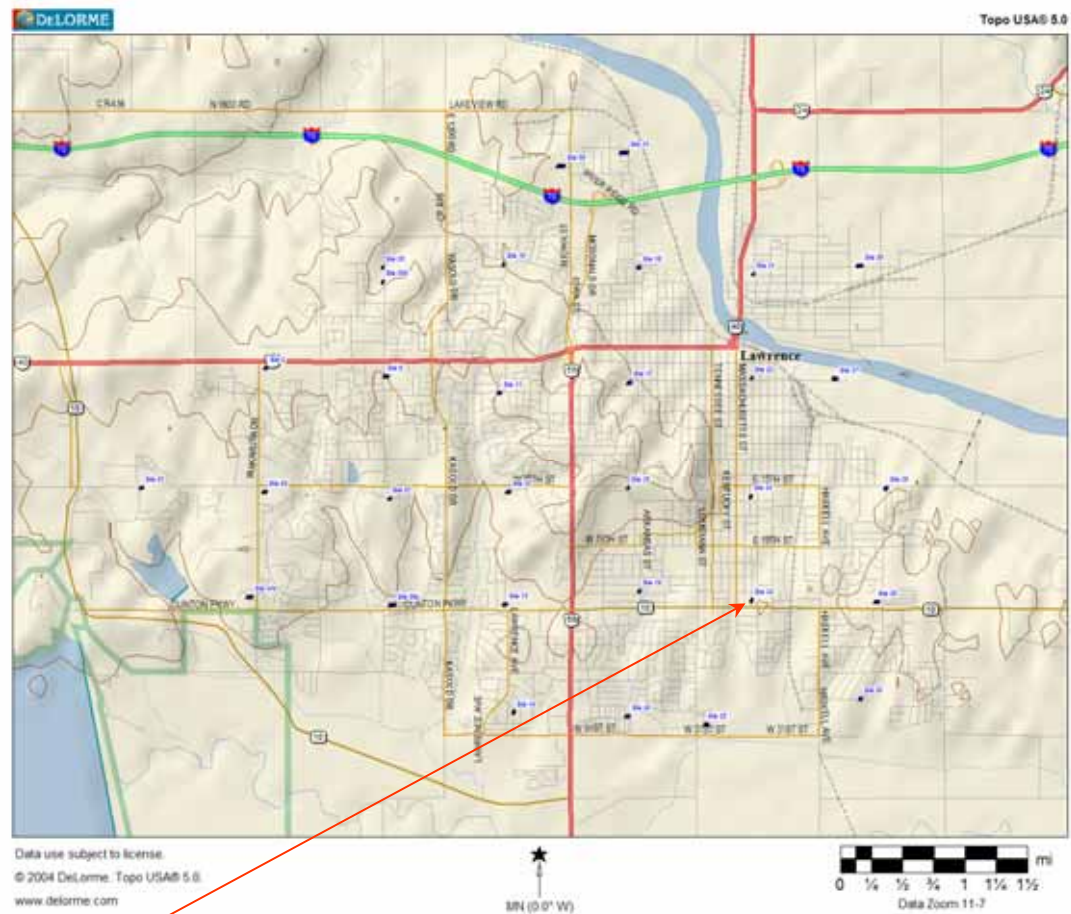
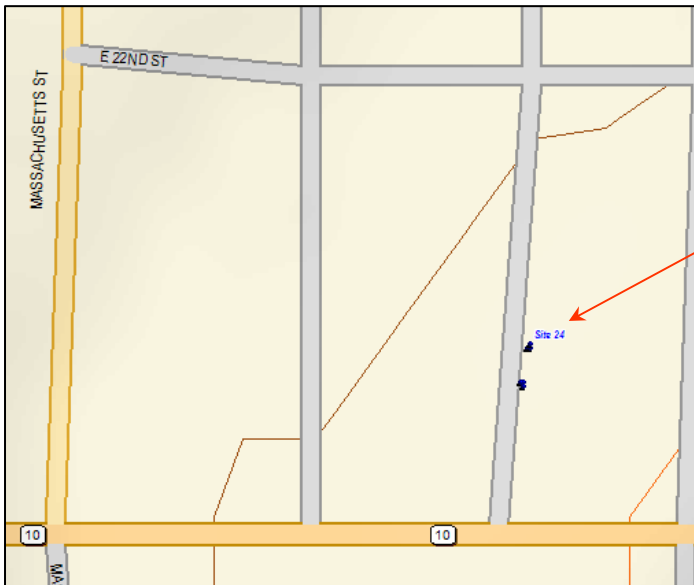
Pressure: 30.06"

Visibility: 10 miles

Winds: NE @ 13.8MPH

Conditions: Clear

64.87 dBuV/M
925.42' Average Elevation



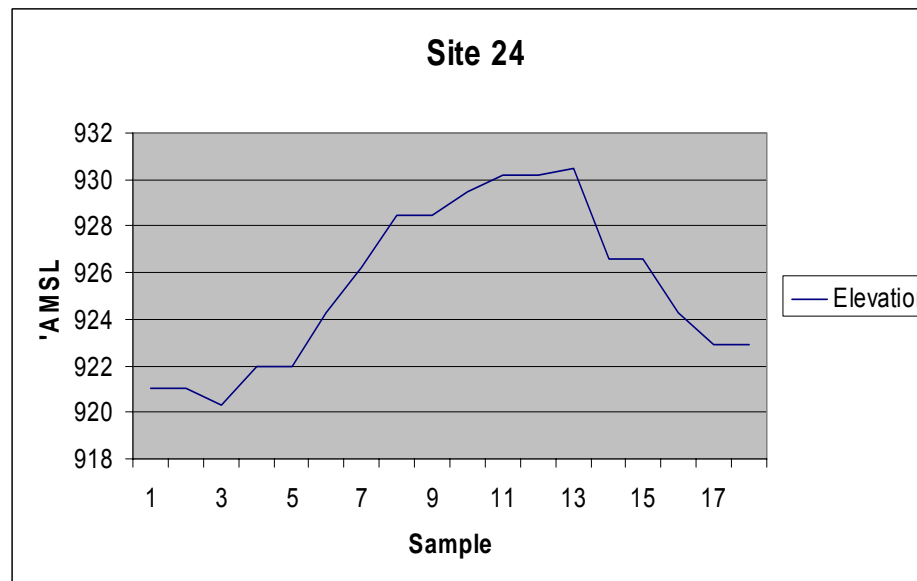
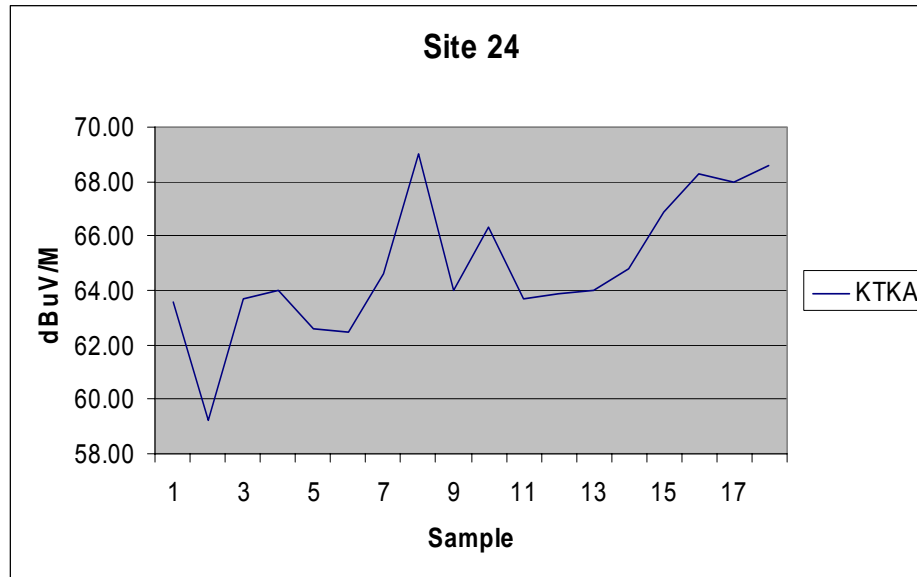
Notes:

Antenna is vehicle mounted, 30' above ground level
Antenna oriented towards transmitter

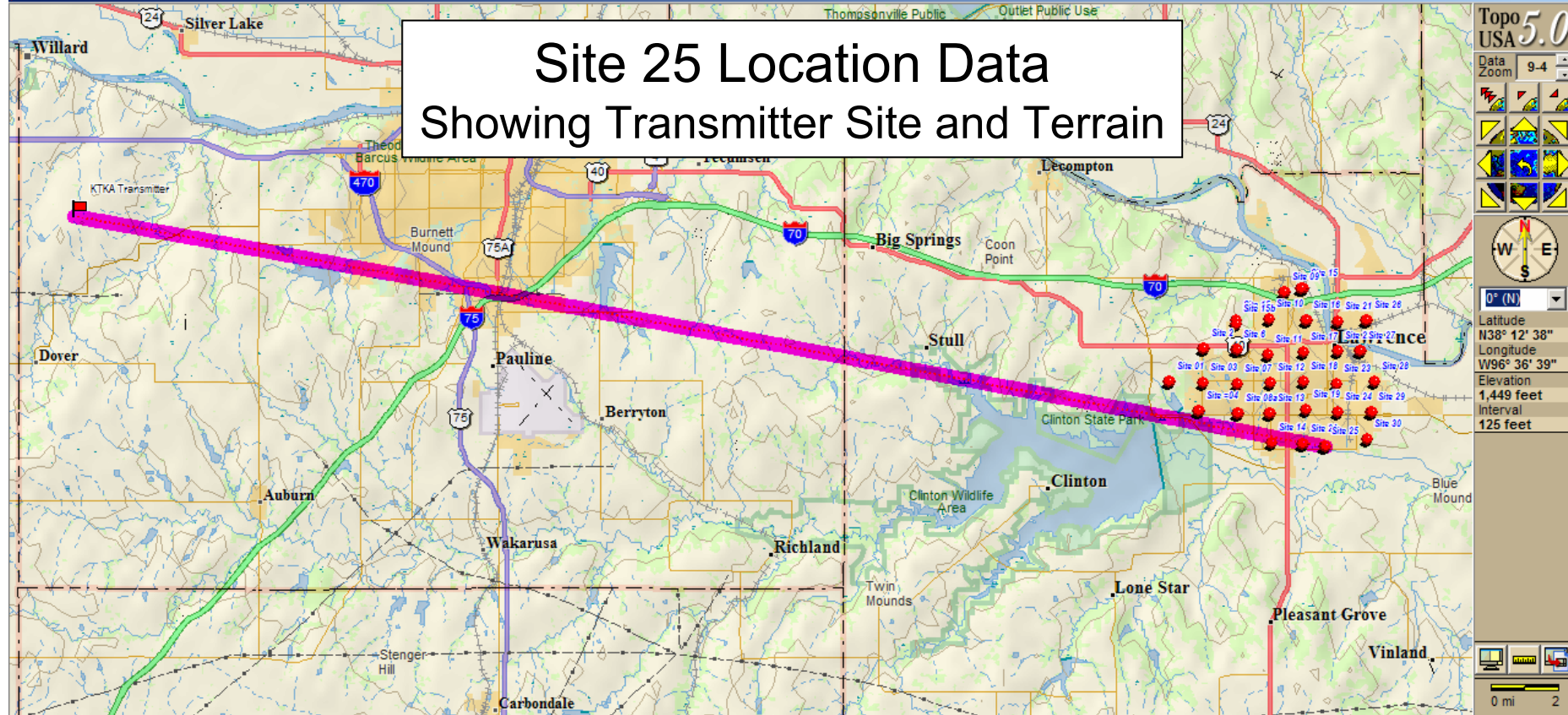
The adjacent picture indicates the sample points of the test and is present in the logged information.

' JobName=KTKA2.dto
 ' JobFileVersion=1.02
 ' Locked=No
 ' IncludeComment=Yes
 ' FullDataRecords=Yes
 ' SignalUnits=dBuV/M
 ' SpaceUnits=English
 ' RFamp=Off
 ' Bandwidth=WB
 ' DelayDimension=Time
 ' Delay=1

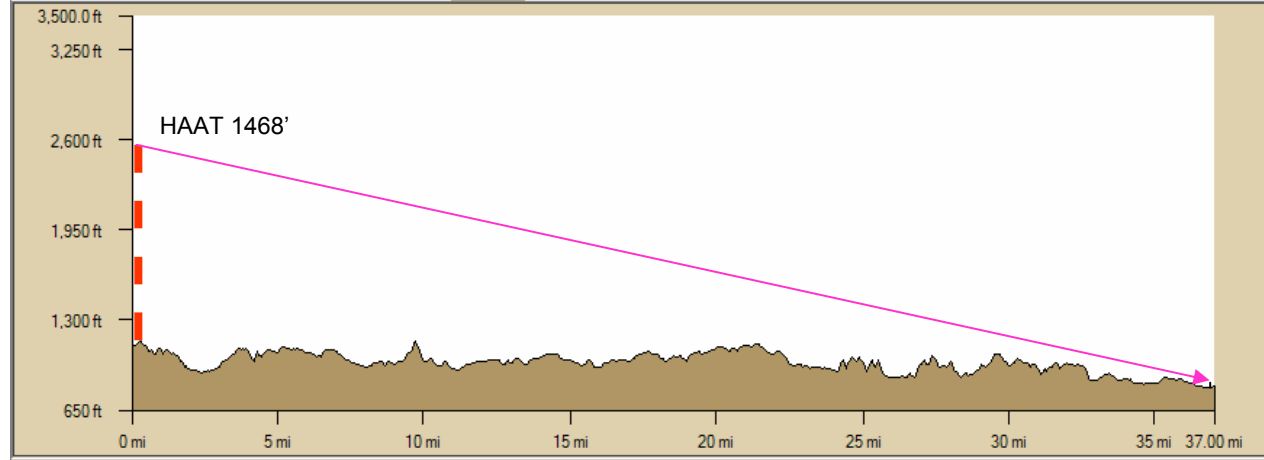
| | | Total | | Count | | | Avg | | | | |
|----------------------|----------|--------------|-------------|----------|-----------------------------|------|------------|-----|---|---|-----|
| | | 1167.7 | | 18 | Total dBuV divided by Count | | Elevation | | | | |
| ' Freq 1= 681 Freq 1 | | 38.6 | | | | | | | | | |
| ' Comment=st24 | | 64.87 dBuV/M | | | | | 925.42 | | | | |
| 4/13/2005 | 16:00:14 | 681.25 MHz | 63.6 dBuV/M | 38.94365 | -95.23353 Freq 1 | 38.6 | 921 Feet | Deg | 1 | 8 | 1.4 |
| 4/13/2005 | 16:00:15 | 681.25 MHz | 59.2 dBuV/M | 38.94365 | -95.23353 Freq 1 | 38.6 | 921 Feet | Deg | 1 | 8 | 1.4 |
| 4/13/2005 | 16:00:17 | 681.25 MHz | 63.7 dBuV/M | 38.94365 | -95.23353 Freq 1 | 38.6 | 920.3 Feet | Deg | 1 | 8 | 1.4 |
| 4/13/2005 | 16:00:18 | 681.25 MHz | 64 dBuV/M | 38.94365 | -95.23355 Freq 1 | 38.6 | 922 Feet | Deg | 1 | 8 | 1.4 |
| 4/13/2005 | 16:00:20 | 681.25 MHz | 62.6 dBuV/M | 38.94365 | -95.23355 Freq 1 | 38.6 | 922 Feet | Deg | 1 | 8 | 1.4 |
| 4/13/2005 | 16:00:21 | 681.25 MHz | 62.5 dBuV/M | 38.94365 | -95.23353 Freq 1 | 38.6 | 924.3 Feet | Deg | 1 | 8 | 1.4 |
| 4/13/2005 | 16:00:22 | 681.25 MHz | 64.6 dBuV/M | 38.94365 | -95.23355 Freq 1 | 38.6 | 926.2 Feet | Deg | 1 | 8 | 1.7 |
| 4/13/2005 | 16:00:24 | 681.25 MHz | 69 dBuV/M | 38.94365 | -95.23353 Freq 1 | 38.6 | 928.5 Feet | Deg | 1 | 8 | 2 |
| 4/13/2005 | 16:00:25 | 681.25 MHz | 64 dBuV/M | 38.94365 | -95.23353 Freq 1 | 38.6 | 928.5 Feet | Deg | 1 | 8 | 2 |
| 4/13/2005 | 16:00:27 | 681.25 MHz | 66.3 dBuV/M | 38.94365 | -95.23353 Freq 1 | 38.6 | 929.5 Feet | Deg | 1 | 8 | 2.1 |
| 4/13/2005 | 16:00:28 | 681.25 MHz | 63.7 dBuV/M | 38.94365 | -95.23353 Freq 1 | 38.6 | 930.2 Feet | Deg | 1 | 8 | 2.1 |
| 4/13/2005 | 16:00:29 | 681.25 MHz | 63.9 dBuV/M | 38.94365 | -95.23353 Freq 1 | 38.6 | 930.2 Feet | Deg | 1 | 8 | 2.1 |
| 4/13/2005 | 16:00:31 | 681.25 MHz | 64 dBuV/M | 38.94365 | -95.23353 Freq 1 | 38.6 | 930.5 Feet | Deg | 1 | 8 | 2.1 |
| 4/13/2005 | 16:00:32 | 681.25 MHz | 64.8 dBuV/M | 38.94365 | -95.23353 Freq 1 | 38.6 | 926.6 Feet | Deg | 1 | 8 | 2.5 |
| 4/13/2005 | 16:00:34 | 681.25 MHz | 66.9 dBuV/M | 38.94365 | -95.23353 Freq 1 | 38.6 | 926.6 Feet | Deg | 1 | 8 | 2.5 |
| 4/13/2005 | 16:00:35 | 681.25 MHz | 68.3 dBuV/M | 38.94365 | -95.23353 Freq 1 | 38.6 | 924.3 Feet | Deg | 1 | 8 | 2.6 |
| 4/13/2005 | 16:00:36 | 681.25 MHz | 68 dBuV/M | 38.94367 | -95.23353 Freq 1 | 38.6 | 922.9 Feet | Deg | 1 | 8 | 2.1 |
| 4/13/2005 | 16:00:38 | 681.25 MHz | 68.6 dBuV/M | 38.94367 | -95.23353 Freq 1 | 38.6 | 922.9 Feet | Deg | 1 | 8 | 2.1 |



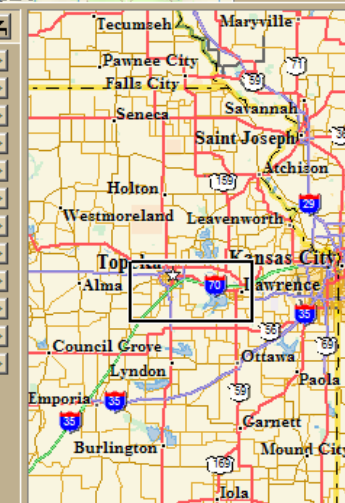
Site 25 Location Data Showing Transmitter Site and Terrain



Map Files Find Print Draw GPS Route Profile 3-D Info [NetLink](#) Map Display Handheld Export



Latitude: N38° 55' 45.06"
Longitude: W95° 14' 24.84"
Lin Dist: 36.97 mi
Terr Dist: 37.00 mi
Climb Dist: 18.78 mi
Desc Dist: 18.16 mi
Elev: 818.5 ft
Elev Gain: -307.7 ft
Climb Elev: 2,903.2 ft
Desc Elev: 3,210.9 ft
Grade: 3
Avg Grade: 3
☐ Show Text
Manual Scale
☒ Max Elev: 3500.00 ft
☐ Min Elev: 820.01 ft
☒ Increase Res On Scale
Reverse Clear More



Location: Site 25

Date: 13 April 2005

Time: 1817

Temperature: 64.9°F

Dew Point: 34°F

Humidity: 32%

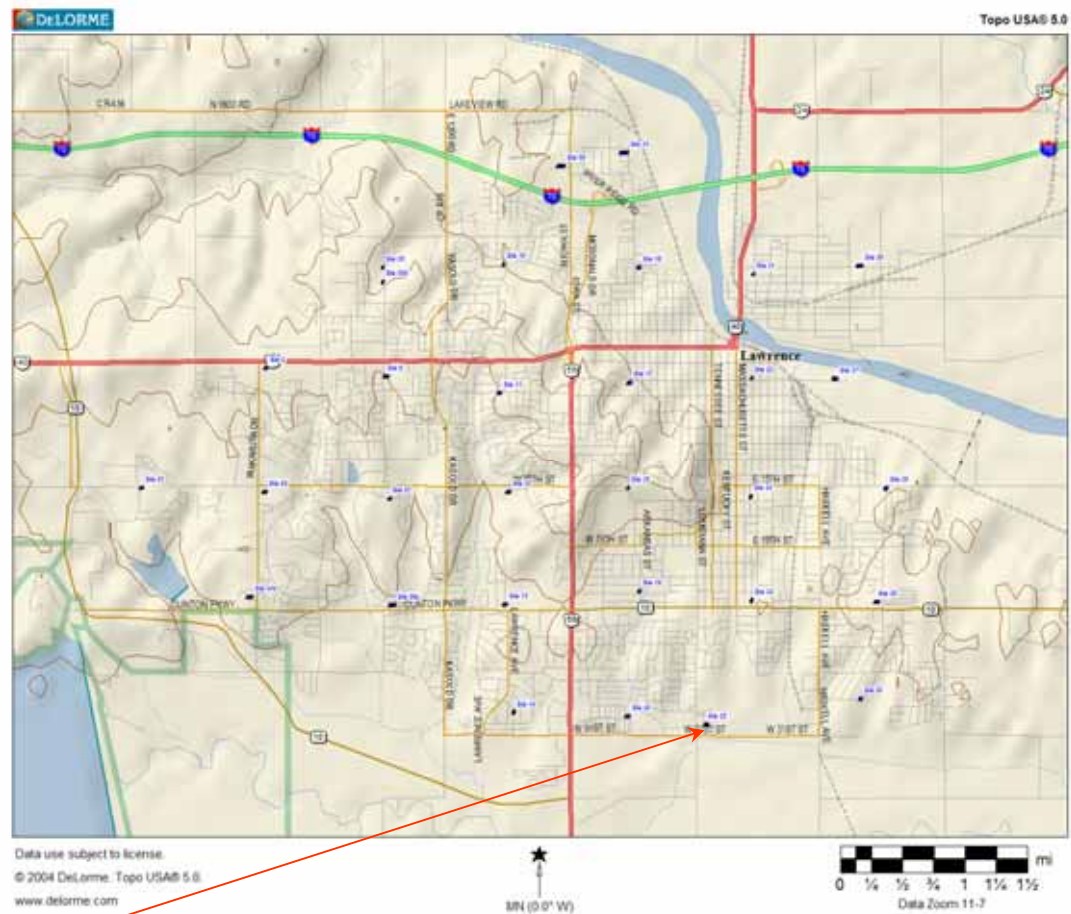
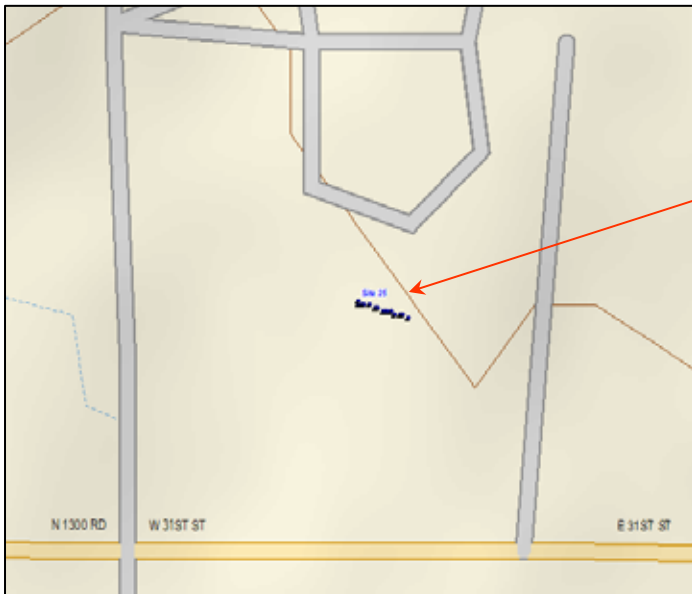
Pressure: 30.09"

Visibility: 10 miles

Winds: NE @ 11.5MPH

Conditions: Clear

72.41 dBuV/M
828.05' Average Elevation



Notes:

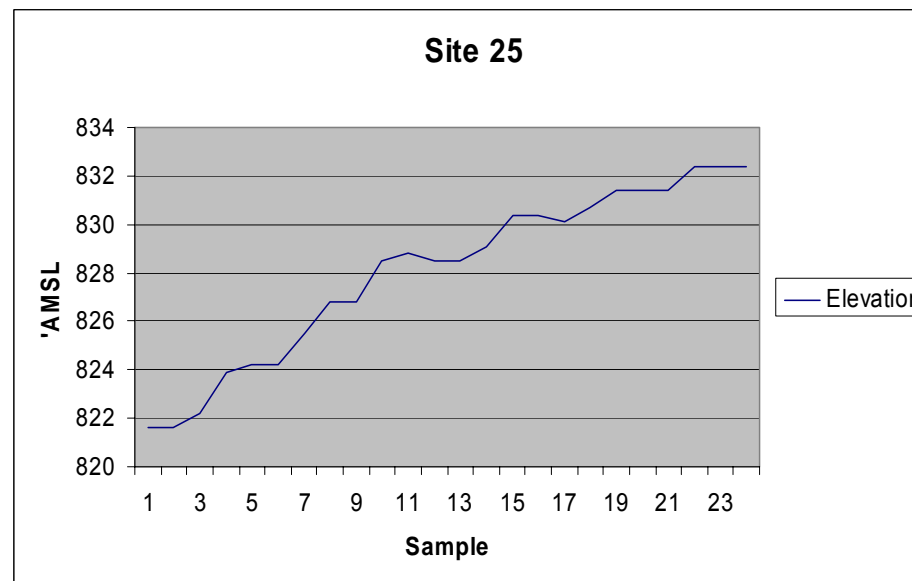
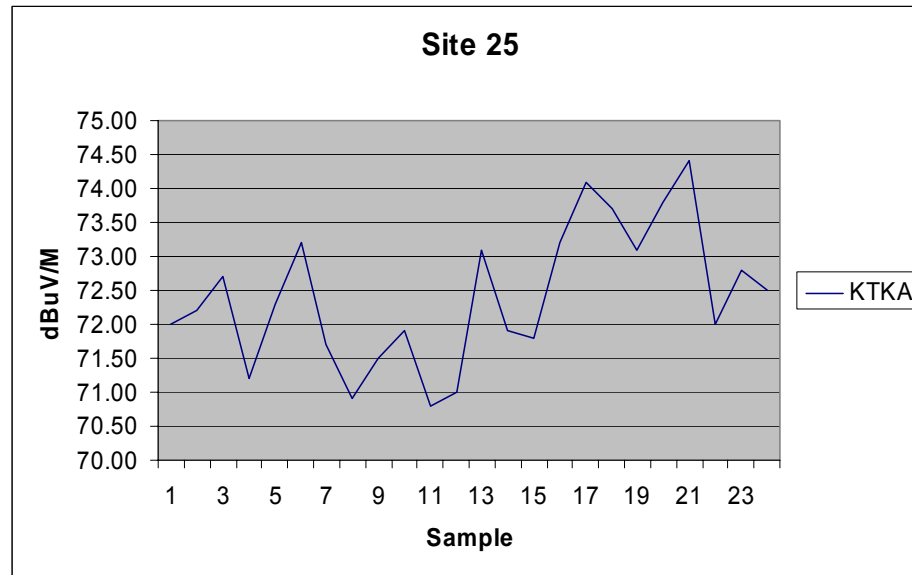
Antenna is vehicle mounted, 30' above ground level
Antenna oriented towards transmitter

Location is $\approx 1,780'$ W of grid intersection due to vehicle inaccessibility

The adjacent picture indicates the sample points of the test and is present in the logged information.

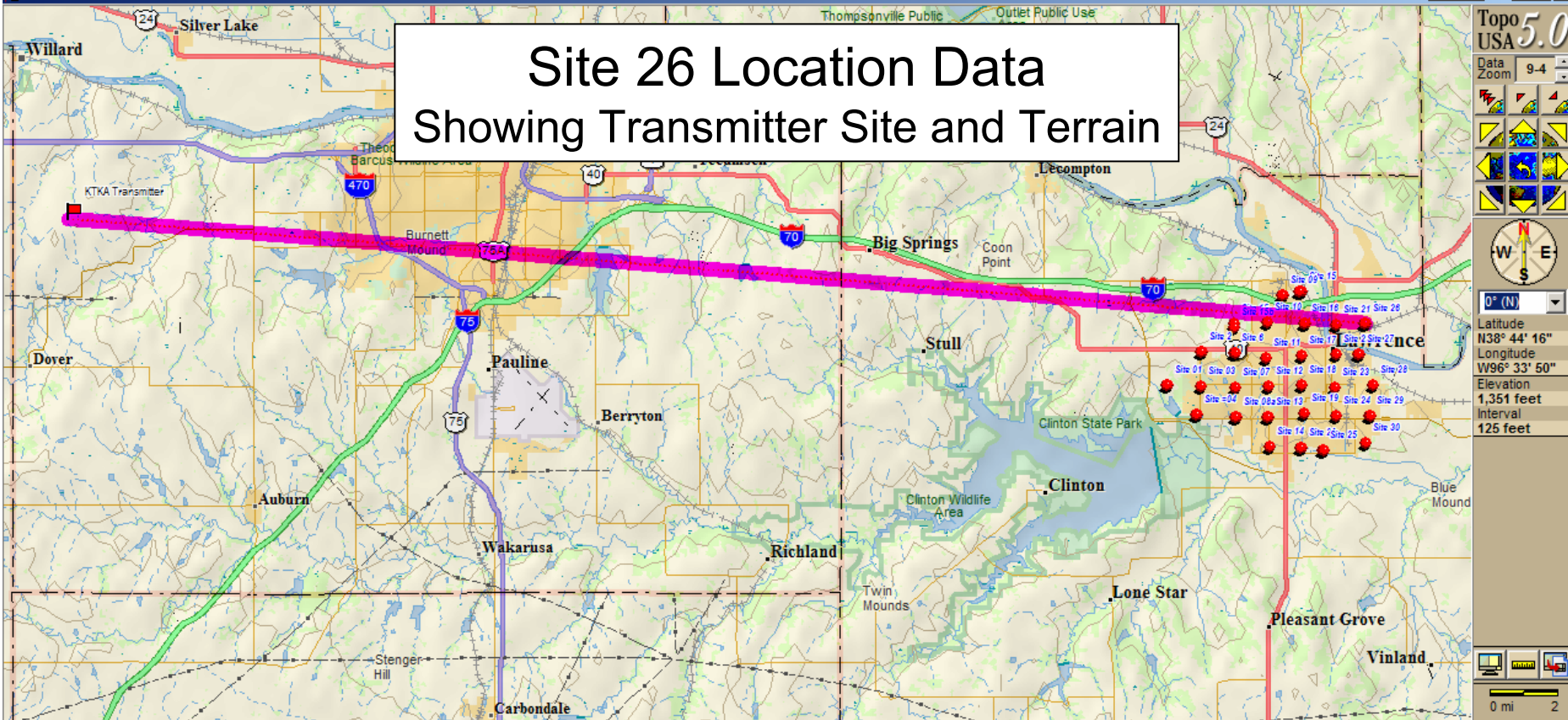
' JobName=KTKA2.dto
 ' JobFileVersion=1.02
 ' Locked=No
 ' IncludeComment=Yes
 ' FullDataRecords=Yes
 ' SignalUnits=dBuV/M
 ' SpaceUnits=English
 ' RFamp=Off
 ' Bandwidth=WB
 ' DelayDimension=Time
 ' Delay=1

| | | Total | | Count | | | Avg | | | | |
|----------------------|----------|--------------|-------------|----------|-----------------------------|------|------------|-----|---|---|-----|
| | | 1737.8 | | 24 | Total dBuV divided by Count | | Elevation | | | | |
| ' FreqListLength=1 | | | | | | | | | | | |
| ' Freq 1= 681 Freq 1 | | 38.6 | | | | | | | | | |
| ' Comment=st25 | | 72.41 dBuV/M | | | | | 828.05 | | | | |
| 4/13/2005 | 18:17:10 | 681.25 MHz | 72 dBuV/M | 38.92923 | -95.24045 Freq 1 | 38.6 | 821.6 Feet | Deg | 1 | 8 | 1.3 |
| 4/13/2005 | 18:17:11 | 681.25 MHz | 72.2 dBuV/M | 38.92923 | -95.24045 Freq 1 | 38.6 | 821.6 Feet | Deg | 1 | 8 | 1.3 |
| 4/13/2005 | 18:17:13 | 681.25 MHz | 72.7 dBuV/M | 38.92923 | -95.24045 Freq 1 | 38.6 | 822.2 Feet | Deg | 1 | 8 | 1.2 |
| 4/13/2005 | 18:17:14 | 681.25 MHz | 71.2 dBuV/M | 38.92923 | -95.24045 Freq 1 | 38.6 | 823.9 Feet | Deg | 1 | 8 | 1.2 |
| 4/13/2005 | 18:17:16 | 681.25 MHz | 72.3 dBuV/M | 38.92925 | -95.24045 Freq 1 | 38.6 | 824.2 Feet | Deg | 1 | 8 | 1.3 |
| 4/13/2005 | 18:17:17 | 681.25 MHz | 73.2 dBuV/M | 38.92925 | -95.24045 Freq 1 | 38.6 | 824.2 Feet | Deg | 1 | 8 | 1.3 |
| 4/13/2005 | 18:17:19 | 681.25 MHz | 71.7 dBuV/M | 38.92925 | -95.24045 Freq 1 | 38.6 | 825.5 Feet | Deg | 1 | 8 | 1.3 |
| 4/13/2005 | 18:17:20 | 681.25 MHz | 70.9 dBuV/M | 38.92923 | -95.24043 Freq 1 | 38.6 | 826.8 Feet | Deg | 1 | 8 | 1.4 |
| 4/13/2005 | 18:17:21 | 681.25 MHz | 71.5 dBuV/M | 38.92923 | -95.24043 Freq 1 | 38.6 | 826.8 Feet | Deg | 1 | 8 | 1.4 |
| 4/13/2005 | 18:17:23 | 681.25 MHz | 71.9 dBuV/M | 38.92923 | -95.24042 Freq 1 | 38.6 | 828.5 Feet | Deg | 1 | 8 | 1.4 |
| 4/13/2005 | 18:17:24 | 681.25 MHz | 70.8 dBuV/M | 38.92923 | -95.24038 Freq 1 | 38.6 | 828.8 Feet | Deg | 1 | 8 | 1.5 |
| 4/13/2005 | 18:17:26 | 681.25 MHz | 71 dBuV/M | 38.92922 | -95.24035 Freq 1 | 38.6 | 828.5 Feet | Deg | 1 | 8 | 1.6 |
| 4/13/2005 | 18:17:27 | 681.25 MHz | 73.1 dBuV/M | 38.92922 | -95.24035 Freq 1 | 38.6 | 828.5 Feet | Deg | 1 | 8 | 1.6 |
| 4/13/2005 | 18:17:29 | 681.25 MHz | 71.9 dBuV/M | 38.92922 | -95.24033 Freq 1 | 38.6 | 829.1 Feet | Deg | 1 | 8 | 1.6 |
| 4/13/2005 | 18:17:30 | 681.25 MHz | 71.8 dBuV/M | 38.9292 | -95.2403 Freq 1 | 38.6 | 830.4 Feet | Deg | 1 | 8 | 1.5 |
| 4/13/2005 | 18:17:31 | 681.25 MHz | 73.2 dBuV/M | 38.9292 | -95.2403 Freq 1 | 38.6 | 830.4 Feet | Deg | 1 | 8 | 1.5 |
| 4/13/2005 | 18:17:33 | 681.25 MHz | 74.1 dBuV/M | 38.9292 | -95.24028 Freq 1 | 38.6 | 830.1 Feet | Deg | 1 | 8 | 1.5 |
| 4/13/2005 | 18:17:34 | 681.25 MHz | 73.7 dBuV/M | 38.9292 | -95.24025 Freq 1 | 38.6 | 830.7 Feet | Deg | 1 | 8 | 1.6 |
| 4/13/2005 | 18:17:36 | 681.25 MHz | 73.1 dBuV/M | 38.92918 | -95.24023 Freq 1 | 38.6 | 831.4 Feet | Deg | 1 | 8 | 1.5 |
| 4/13/2005 | 18:17:37 | 681.25 MHz | 73.8 dBuV/M | 38.92918 | -95.24023 Freq 1 | 38.6 | 831.4 Feet | Deg | 1 | 8 | 1.5 |
| 4/13/2005 | 18:17:39 | 681.25 MHz | 74.4 dBuV/M | 38.92918 | -95.2402 Freq 1 | 38.6 | 831.4 Feet | Deg | 1 | 8 | 1.4 |
| 4/13/2005 | 18:17:40 | 681.25 MHz | 72 dBuV/M | 38.92918 | -95.24018 Freq 1 | 38.6 | 832.4 Feet | Deg | 1 | 8 | 1.3 |
| 4/13/2005 | 18:17:41 | 681.25 MHz | 72.8 dBuV/M | 38.92917 | -95.24015 Freq 1 | 38.6 | 832.4 Feet | Deg | 1 | 8 | 1.3 |
| 4/13/2005 | 18:17:43 | 681.25 MHz | 72.5 dBuV/M | 38.92917 | -95.24015 Freq 1 | 38.6 | 832.4 Feet | Deg | 1 | 8 | 1.3 |

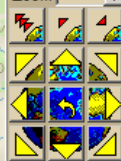


Site 26 Location Data

Showing Transmitter Site and Terrain

Topo
USA 5.0

Data Zoom 9.4



0° (N)

Latitude N38° 44' 16"

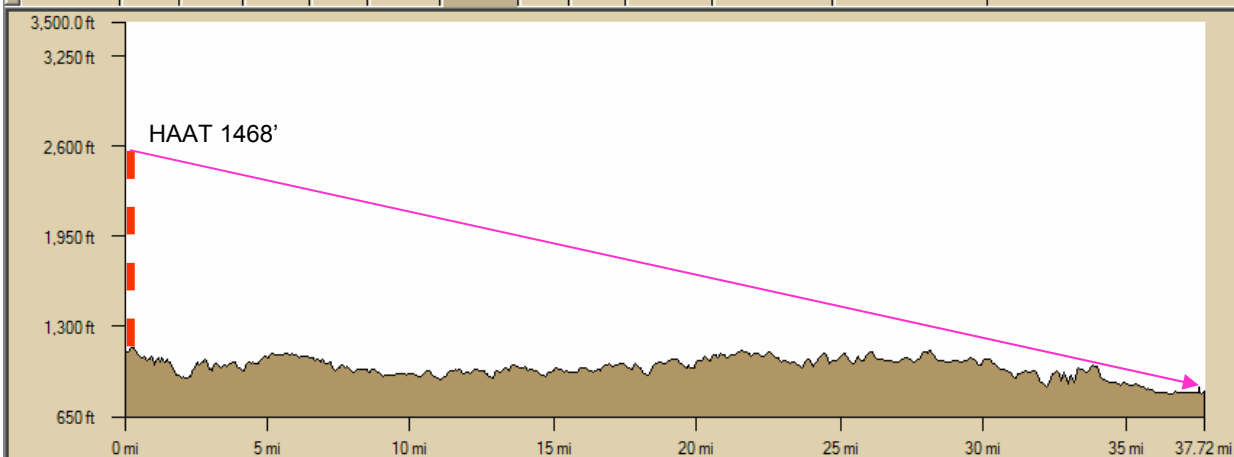
Longitude W96° 33' 50"

Elevation 1,351 feet

Interval 125 feet

0 mi 2

0 mi 2

Map Files Find Print Draw GPS Route Profile 3-D Info [NetLink](#) Map Display Handheld Export

Latitude: N38° 58' 56.76"

Longitude: W95° 13' 2.58"

Lin Dist: 37.69 mi

Terr Dist: 37.72 mi

Climb Dist: 17.34 mi

Desc Dist: 20.20 mi

Elev: 830.5 ft

Elev Gain: -295.7 ft

Climb Elev: 2,883.0 ft

Desc Elev: 3,178.7 ft

Grade: 3

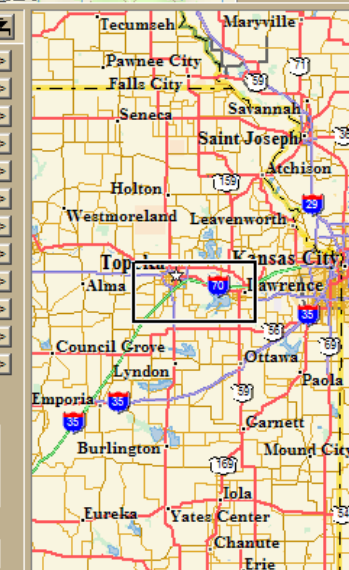
Avg Grade: 3

Show Text

Manual Scale

☒ Max Elev 3500.00 ft☐ Min Elev 820.01 ft☒ Increase Res On Scale

Reverse Clear More



Location: Site 26

Date: 13 April 2005

Time: 1419

Temperature: 64°F

Dew Point: 39°F

Humidity: 40%

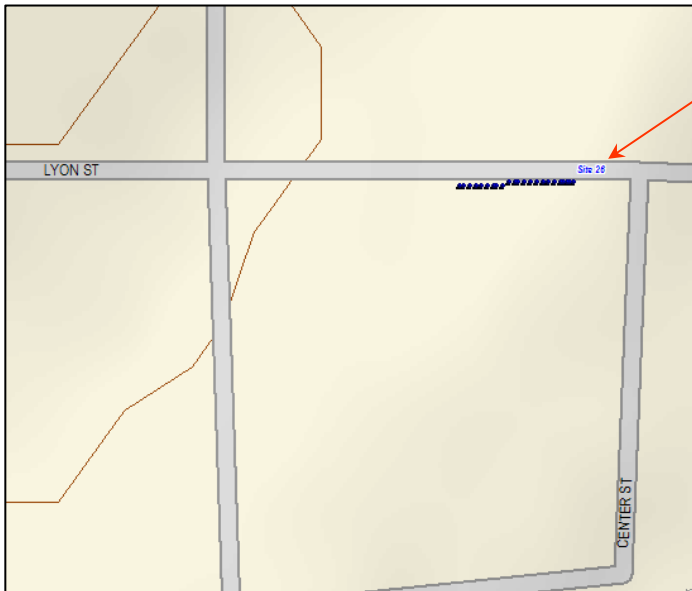
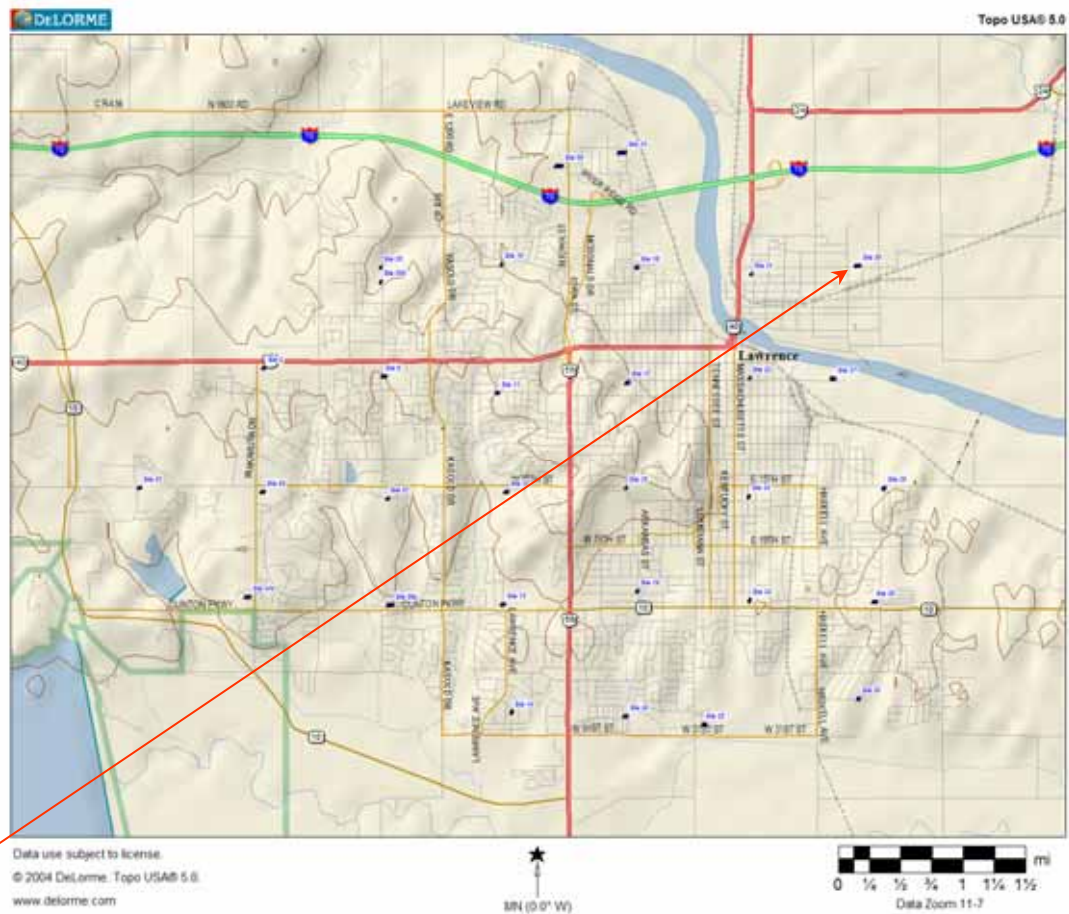
Pressure: 30.08"

Visibility: 10 miles

Winds: NE @ 16.1MPH

Conditions: Clear

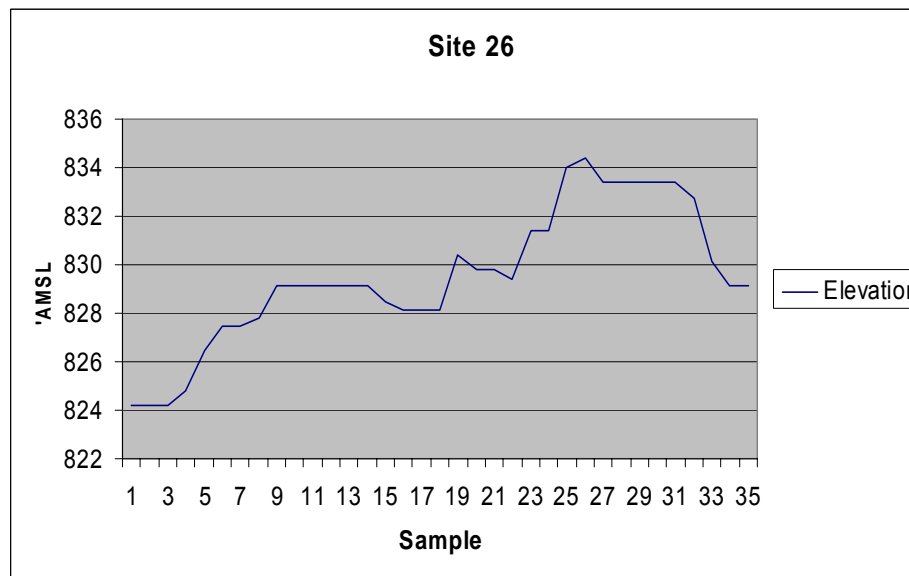
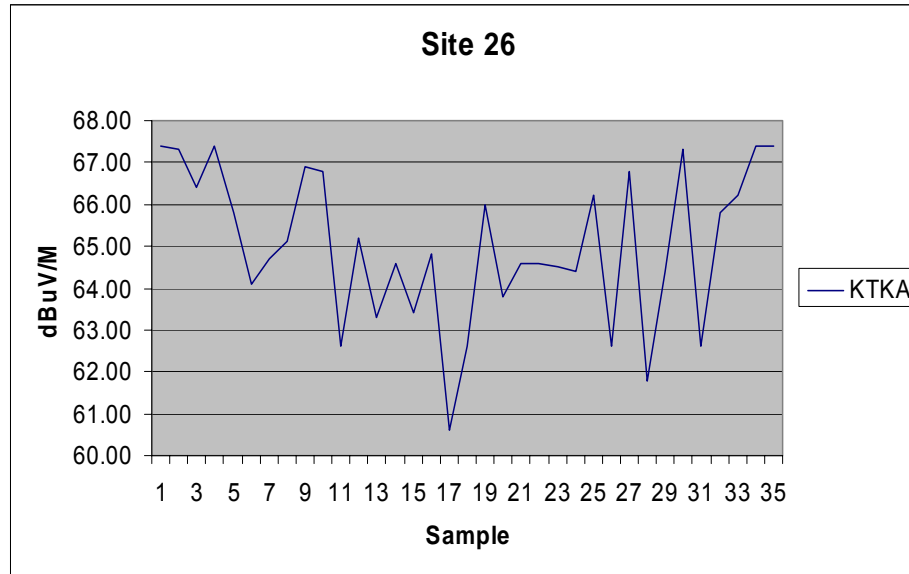
65.01 dBuV/M
829.51' Average Elevation



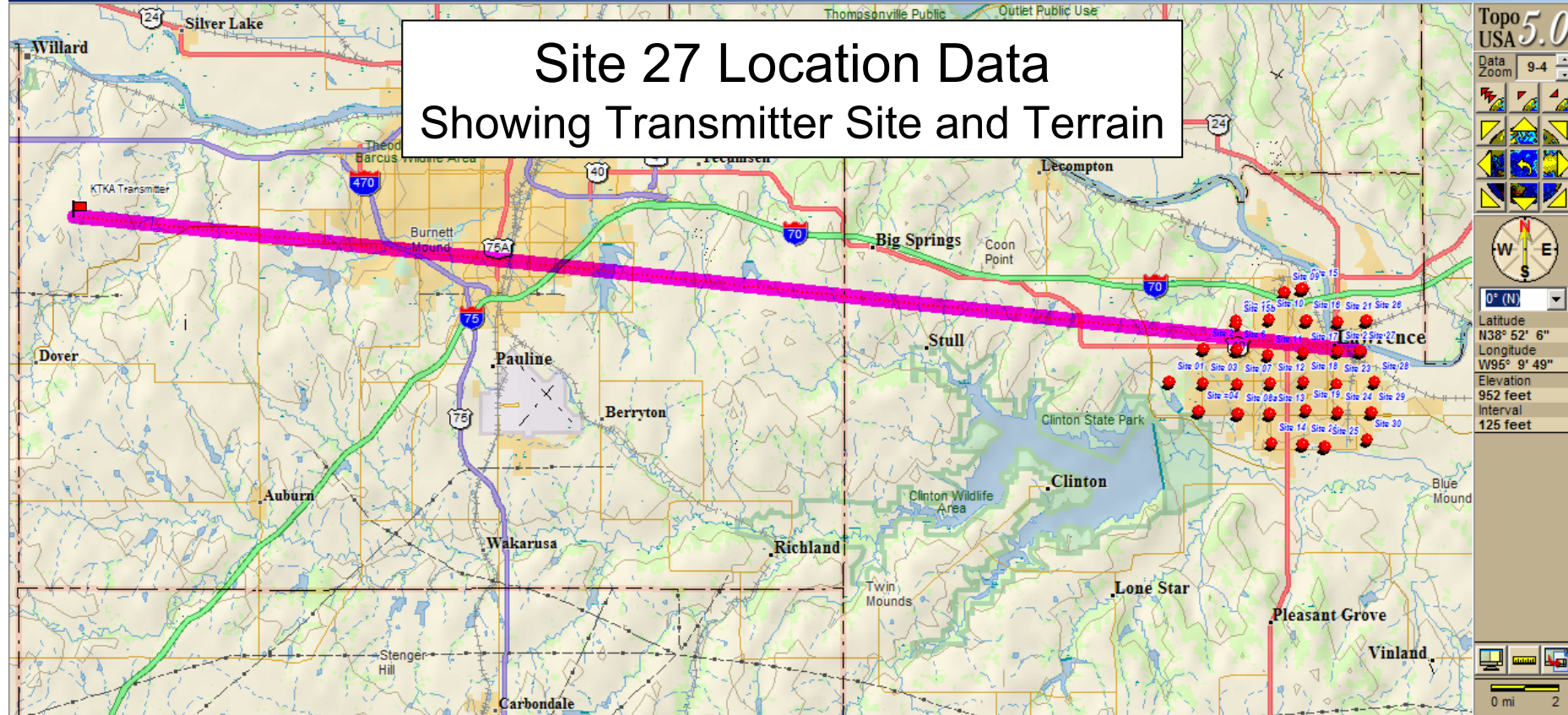
Notes:

Antenna is vehicle mounted, 30' above ground level
Antenna oriented towards transmitter

The adjacent picture indicates the sample points of the test and is present in the logged information.



Site 27 Location Data Showing Transmitter Site and Terrain



Topo USA 5.0

Data Zoom 9-4

Latitude N38° 52' 6"

Longitude W95° 9' 49"

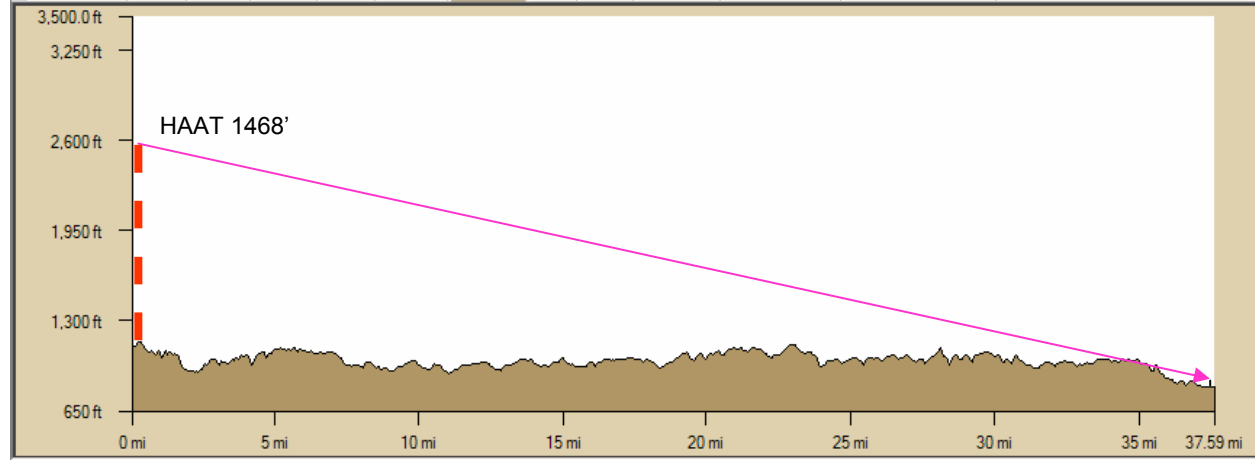
Elevation 952 feet

Interval 125 feet

0° (N)

0 mi 2

Map Files Find Print Draw GPS Route Profile 3-D Info [NetLink](#) Map Display Handheld Export



Latitude: N38° 58' 9.78"

Longitude: W95° 13' 16.74"

Lin Dist: 37.57 mi

Terr Dist: 37.59 mi

Climb Dist: 19.20 mi

Desc Dist: 18.39 mi

Elev: 819.7 ft

Elev Gain: -306.6 ft

Climb Elev: 2,670.0 ft

Desc Elev: 2,976.6 ft

Grade: 2

Avg Grade: 2

☐ Show Text

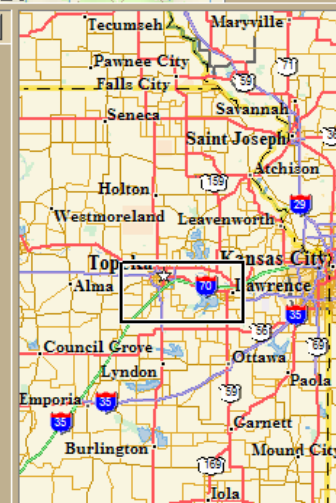
Manual Scale

☒ Max Elev 3500.00 ft

☐ Min Elev 820.01 ft

☒ Increase Res On Scale

Reverse Clear More



Location: Site 27

Date: 13 April 2005

Time: 1439

Temperature: 64°F

Dew Point: 39°F

Humidity: 40%

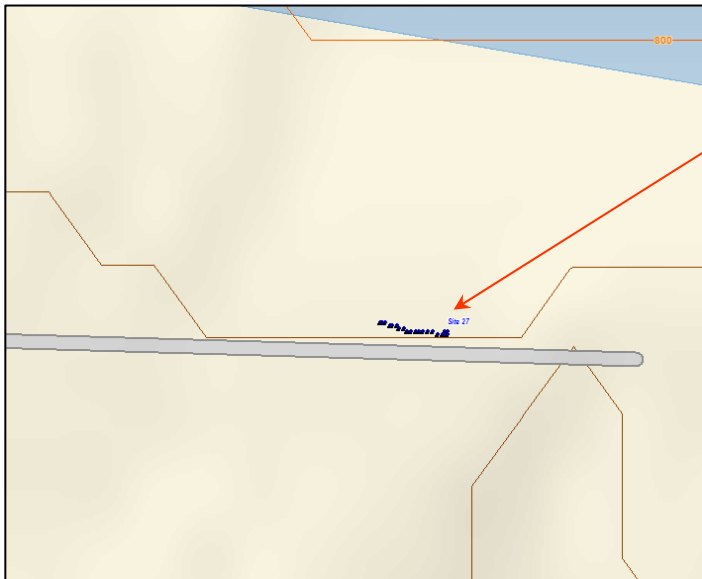
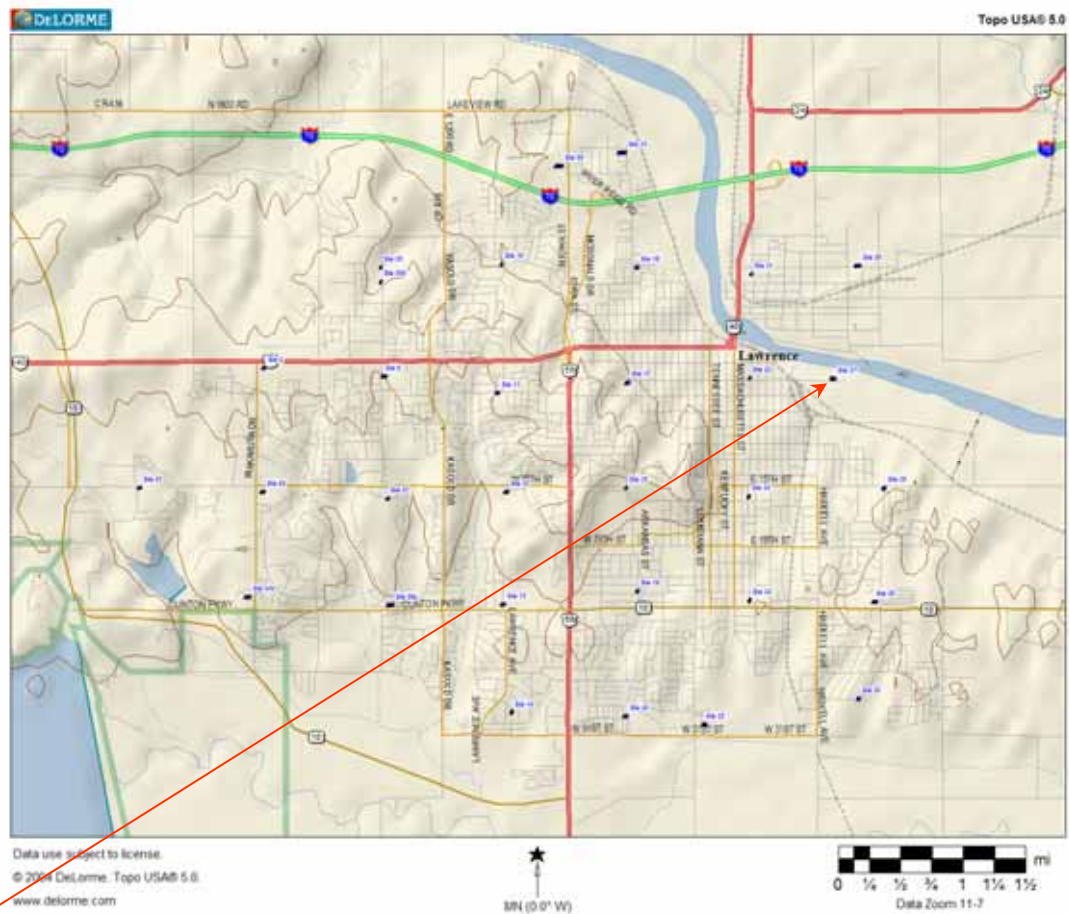
Pressure: 30.08"

Visibility: 10 miles

Winds: NE @ 16.1MPH

Conditions: Clear

60.06 dBuV/M
870.08' Average Elevation



Notes:

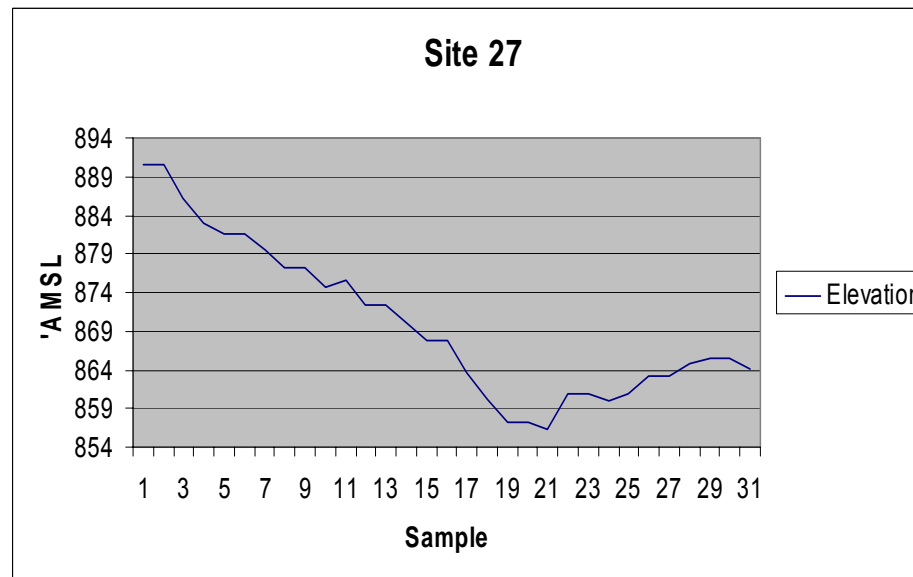
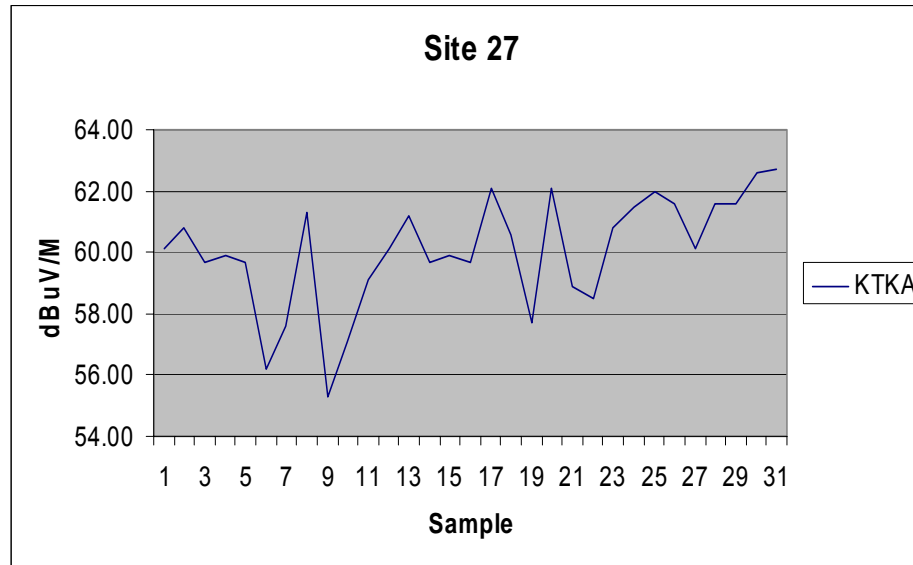
Antenna is vehicle mounted, 30' above ground level
Antenna oriented towards transmitter

Location of test was $\approx 1,663'$ W of grid intersection due to vehicle inaccessibility

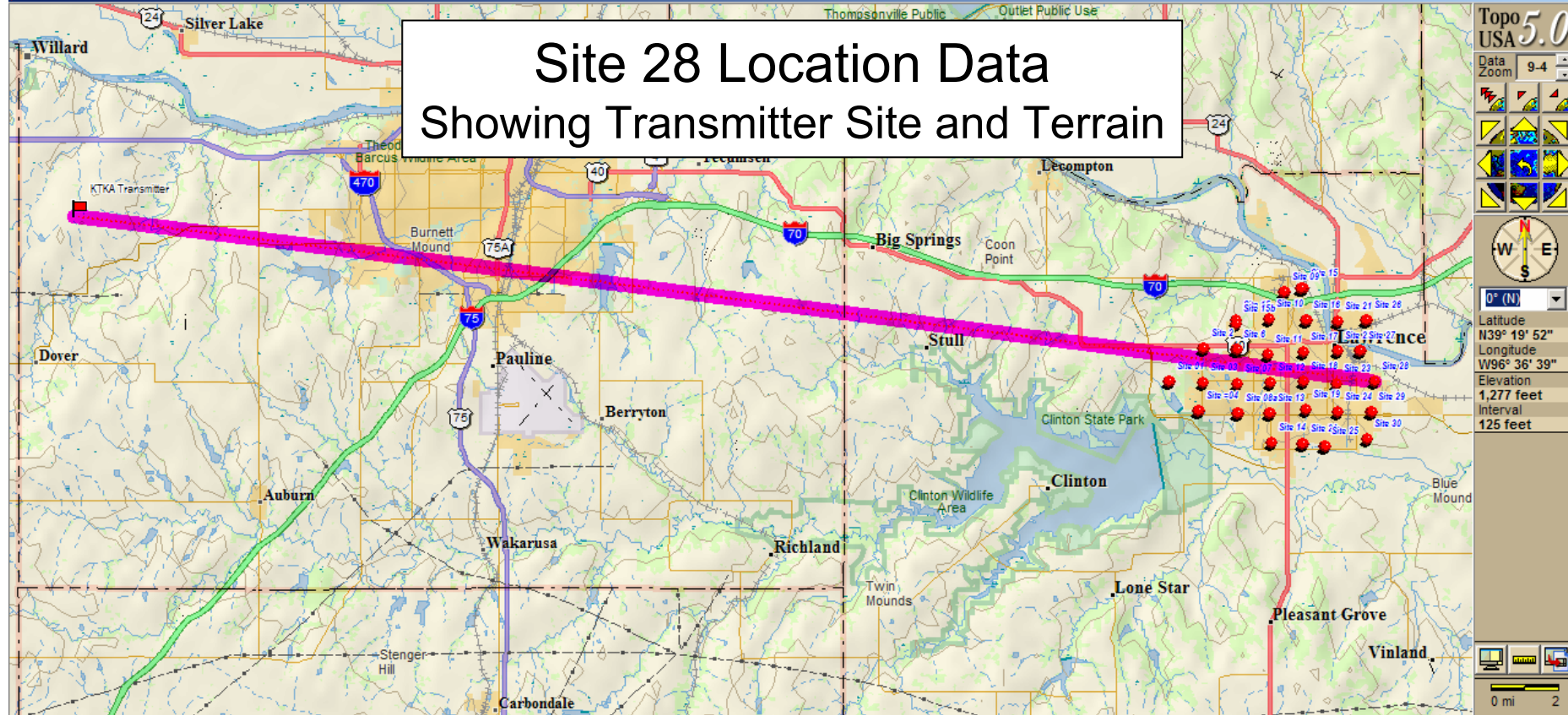
The adjacent picture indicates the sample points of the test and is present in the logged information.

' JobName=KTKA2.dto
 ' JobFileVersion=1.02
 ' Locked=No
 ' IncludeComment=Yes
 ' FullDataRecords=Yes
 ' SignalUnits=dBuV/M
 ' SpaceUnits=English
 ' RFAmp=Off
 ' Bandwidth=WB
 ' DelayDimension=Time
 ' Delay=1

| FreqListLength=1 | | Total | Count | Avg | | Elevation | | | | | | |
|----------------------|----------|--------------|-------------|----------|-----------------------------|-----------|------|-------|------|-----|---------|--|
| ' Freq 1= 681 Freq 1 | | 38.6 | 1861.8 | 31 | Total dBuV divided by Count | | | | | | | |
| ' Comment=st27 | | 60.06 dBuV/M | | 870.08 | | | | | | | | |
| 4/13/2005 | 14:39:28 | 681.25 MHz | 60.1 dBuV/M | 38.96933 | -95.22087 | Freq 1 | 38.6 | 890.5 | Feet | Deg | 1 9 1.1 | |
| 4/13/2005 | 14:39:30 | 681.25 MHz | 60.8 dBuV/M | 38.96933 | -95.22087 | Freq 1 | 38.6 | 890.5 | Feet | Deg | 1 9 1.1 | |
| 4/13/2005 | 14:39:31 | 681.25 MHz | 59.7 dBuV/M | 38.96933 | -95.22085 | Freq 1 | 38.6 | 886.2 | Feet | Deg | 1 9 1.1 | |
| 4/13/2005 | 14:39:33 | 681.25 MHz | 59.9 dBuV/M | 38.96932 | -95.22085 | Freq 1 | 38.6 | 882.9 | Feet | Deg | 1 8 1 | |
| 4/13/2005 | 14:39:34 | 681.25 MHz | 59.7 dBuV/M | 38.96932 | -95.22085 | Freq 1 | 38.6 | 881.6 | Feet | Deg | 1 8 1.1 | |
| 4/13/2005 | 14:39:35 | 681.25 MHz | 56.2 dBuV/M | 38.96932 | -95.22085 | Freq 1 | 38.6 | 881.6 | Feet | Deg | 1 8 1.1 | |
| 4/13/2005 | 14:39:37 | 681.25 MHz | 57.6 dBuV/M | 38.96932 | -95.22087 | Freq 1 | 38.6 | 879.6 | Feet | Deg | 1 8 1.1 | |
| 4/13/2005 | 14:39:38 | 681.25 MHz | 61.3 dBuV/M | 38.96932 | -95.22088 | Freq 1 | 38.6 | 877.3 | Feet | Deg | 1 8 1.2 | |
| 4/13/2005 | 14:39:40 | 681.25 MHz | 55.3 dBuV/M | 38.96932 | -95.22088 | Freq 1 | 38.6 | 877.3 | Feet | Deg | 1 8 1.2 | |
| 4/13/2005 | 14:39:41 | 681.25 MHz | 57.1 dBuV/M | 38.96932 | -95.22092 | Freq 1 | 38.6 | 874.7 | Feet | Deg | 1 8 1.3 | |
| 4/13/2005 | 14:39:43 | 681.25 MHz | 59.1 dBuV/M | 38.96933 | -95.22095 | Freq 1 | 38.6 | 875.7 | Feet | Deg | 1 8 1.4 | |
| 4/13/2005 | 14:39:44 | 681.25 MHz | 60.1 dBuV/M | 38.96933 | -95.22098 | Freq 1 | 38.6 | 872.4 | Feet | Deg | 1 8 1.4 | |
| 4/13/2005 | 14:39:45 | 681.25 MHz | 61.2 dBuV/M | 38.96933 | -95.22098 | Freq 1 | 38.6 | 872.4 | Feet | Deg | 1 8 1.4 | |
| 4/13/2005 | 14:39:47 | 681.25 MHz | 59.7 dBuV/M | 38.96933 | -95.22102 | Freq 1 | 38.6 | 870.1 | Feet | Deg | 1 8 1.4 | |
| 4/13/2005 | 14:39:48 | 681.25 MHz | 59.9 dBuV/M | 38.96933 | -95.22105 | Freq 1 | 38.6 | 867.8 | Feet | Deg | 1 8 1.4 | |
| 4/13/2005 | 14:39:50 | 681.25 MHz | 59.7 dBuV/M | 38.96933 | -95.22105 | Freq 1 | 38.6 | 867.8 | Feet | Deg | 1 8 1.4 | |
| 4/13/2005 | 14:39:51 | 681.25 MHz | 62.1 dBuV/M | 38.96933 | -95.22107 | Freq 1 | 38.6 | 863.6 | Feet | Deg | 1 8 1.4 | |
| 4/13/2005 | 14:39:53 | 681.25 MHz | 60.6 dBuV/M | 38.96933 | -95.2211 | Freq 1 | 38.6 | 860.3 | Feet | Deg | 1 7 1.4 | |
| 4/13/2005 | 14:39:54 | 681.25 MHz | 57.7 dBuV/M | 38.96933 | -95.22113 | Freq 1 | 38.6 | 857.3 | Feet | Deg | 1 7 1.4 | |
| 4/13/2005 | 14:39:55 | 681.25 MHz | 62.1 dBuV/M | 38.96933 | -95.22113 | Freq 1 | 38.6 | 857.3 | Feet | Deg | 1 7 1.4 | |
| 4/13/2005 | 14:39:57 | 681.25 MHz | 58.9 dBuV/M | 38.96935 | -95.22115 | Freq 1 | 38.6 | 856.3 | Feet | Deg | 1 7 1.4 | |
| 4/13/2005 | 14:39:58 | 681.25 MHz | 58.5 dBuV/M | 38.96935 | -95.22118 | Freq 1 | 38.6 | 860.9 | Feet | Deg | 1 8 1.4 | |
| 4/13/2005 | 14:40:00 | 681.25 MHz | 60.8 dBuV/M | 38.96935 | -95.22118 | Freq 1 | 38.6 | 860.9 | Feet | Deg | 1 8 1.4 | |
| 4/13/2005 | 14:40:01 | 681.25 MHz | 61.5 dBuV/M | 38.96937 | -95.2212 | Freq 1 | 38.6 | 860 | Feet | Deg | 1 8 1.4 | |
| 4/13/2005 | 14:40:03 | 681.25 MHz | 62 dBuV/M | 38.96937 | -95.22123 | Freq 1 | 38.6 | 860.9 | Feet | Deg | 1 8 1.3 | |
| 4/13/2005 | 14:40:04 | 681.25 MHz | 61.6 dBuV/M | 38.96937 | -95.22125 | Freq 1 | 38.6 | 863.2 | Feet | Deg | 1 8 1.2 | |
| 4/13/2005 | 14:40:06 | 681.25 MHz | 60.1 dBuV/M | 38.96937 | -95.22125 | Freq 1 | 38.6 | 863.2 | Feet | Deg | 1 8 1.2 | |
| 4/13/2005 | 14:40:07 | 681.25 MHz | 61.6 dBuV/M | 38.96938 | -95.22128 | Freq 1 | 38.6 | 864.9 | Feet | Deg | 1 8 1 | |
| 4/13/2005 | 14:40:08 | 681.25 MHz | 61.6 dBuV/M | 38.96938 | -95.2213 | Freq 1 | 38.6 | 865.5 | Feet | Deg | 1 8 1 | |
| 4/13/2005 | 14:40:10 | 681.25 MHz | 62.6 dBuV/M | 38.96938 | -95.2213 | Freq 1 | 38.6 | 865.5 | Feet | Deg | 1 8 1 | |
| 4/13/2005 | 14:40:11 | 681.25 MHz | 62.7 dBuV/M | 38.96938 | -95.22132 | Freq 1 | 38.6 | 864.2 | Feet | Deg | 1 8 1 | |



Site 28 Location Data Showing Transmitter Site and Terrain



Topo USA 5.0

Data Zoom 9-4

Latitude N39° 19' 52"

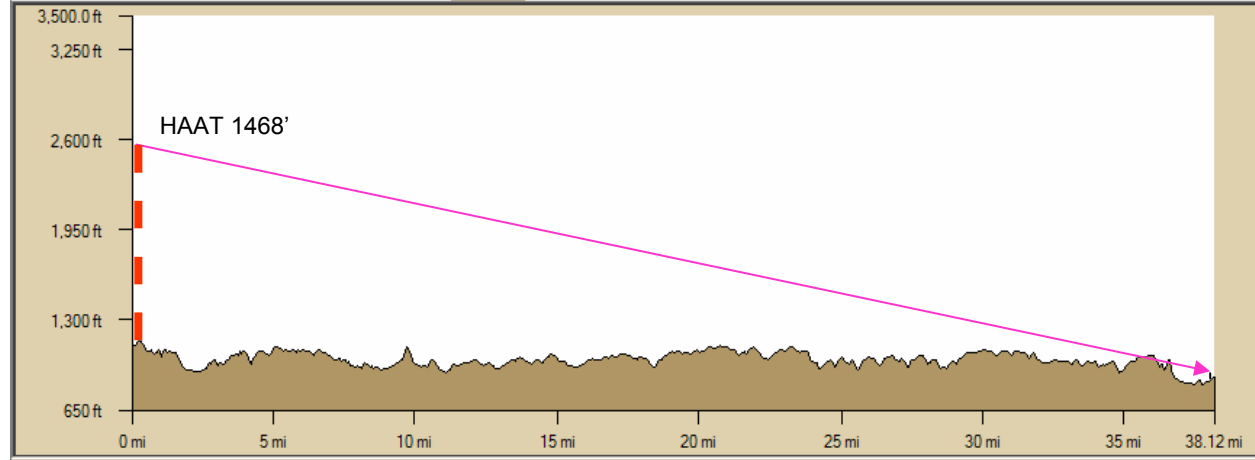
Longitude W96° 36' 39"

Elevation 1,277 feet

Interval 125 feet

0 mi 2

Map Files Find Print Draw GPS Route Profile 3-D Info [NetLink](#) Map Display Handheld Export



Latitude: N38° 57' 23.76"

Longitude: W95° 12' 49.02"

Lin Dist: 38.08 mi

Terr Dist: 38.12 mi

Climb Dist: 19.27 mi

Desc Dist: 18.84 mi

Elev: 882.5 ft

Elev Gain: -243.7 ft

Climb Elev: 3,047.1 ft

Desc Elev: 3,290.8 ft

Grade: 3

Avg Grade: 3

☐ Show Text

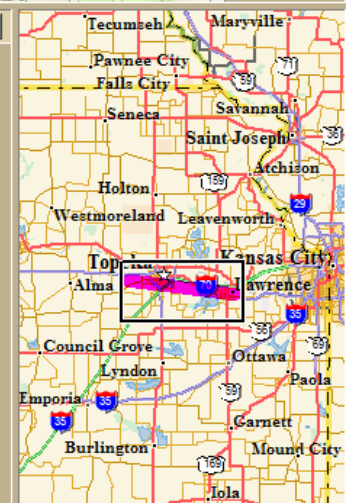
Manual Scale

☒ Max Elev 3500.00 ft

☐ Min Elev 820.01 ft

☒ Increase Res On Scale

Reverse Clear More



Location: Site 28

Date: 13 April 2005

Time: 1541

Temperature: 66°F

Dew Point: 39°F

Humidity: 37%

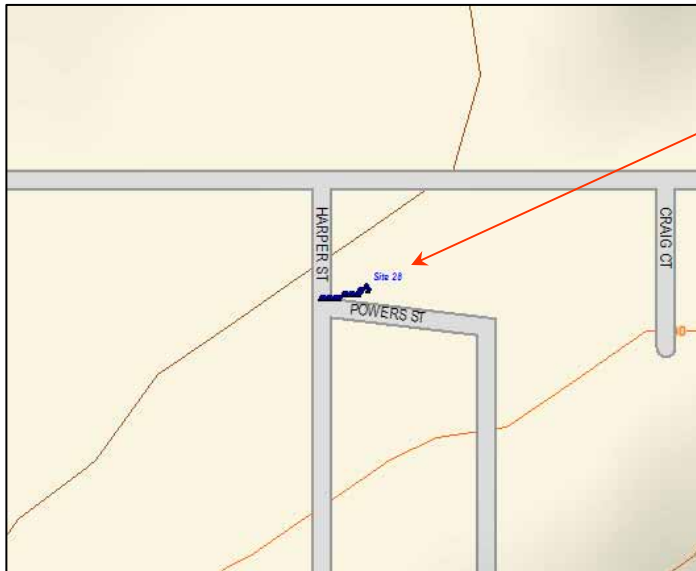
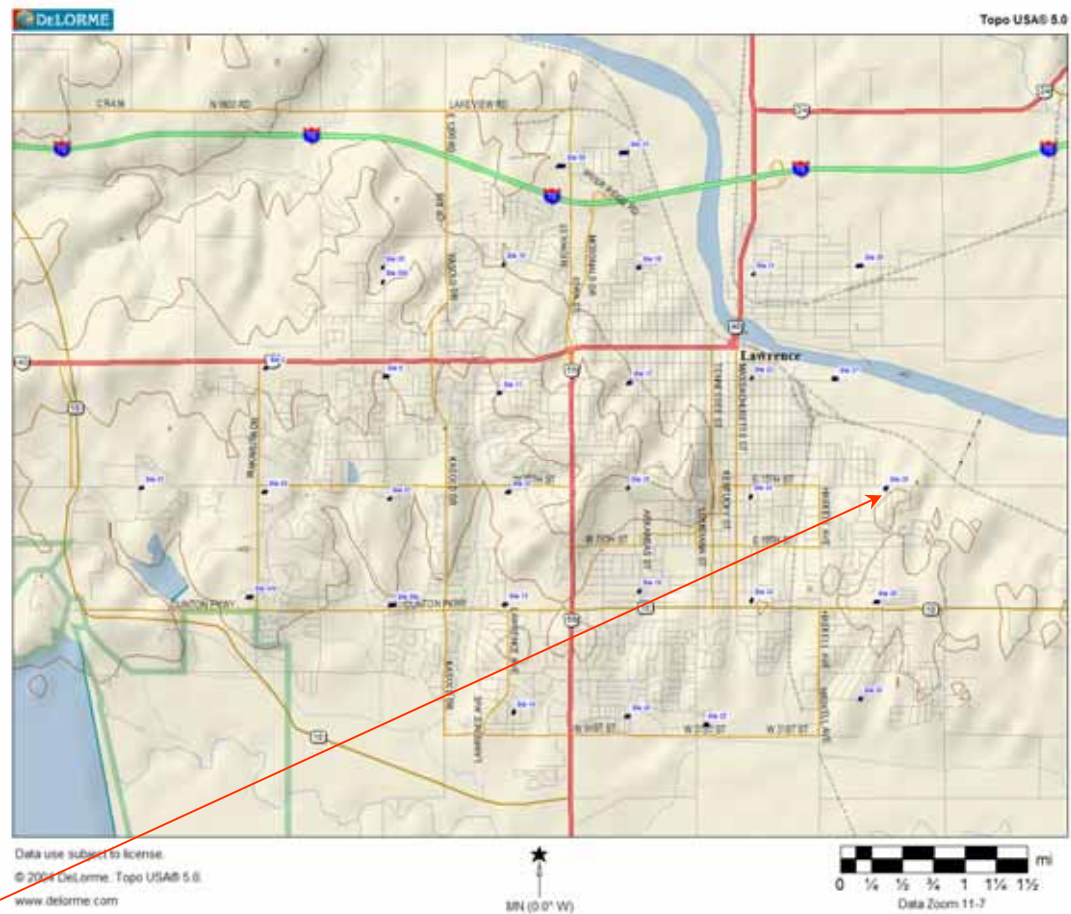
Pressure: 30.07"

Visibility: 10 miles

Winds: NE @ 16.1MPH

Conditions: Clear

68.33 dBuV/M
914.29' Average Elevation



Notes:

Antenna is vehicle mounted, 30' above ground level
Antenna oriented towards transmitter

The adjacent picture indicates the sample points of the test and is present in the logged information.

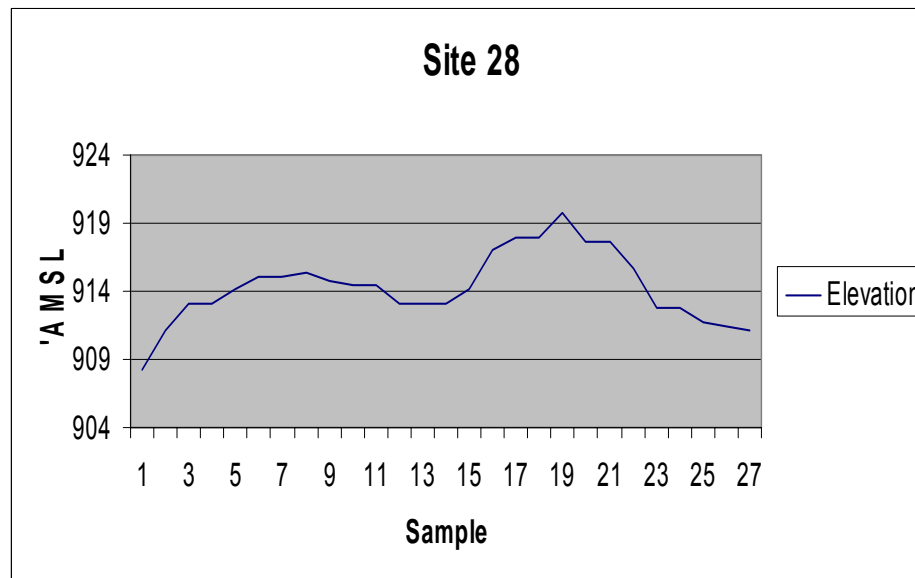
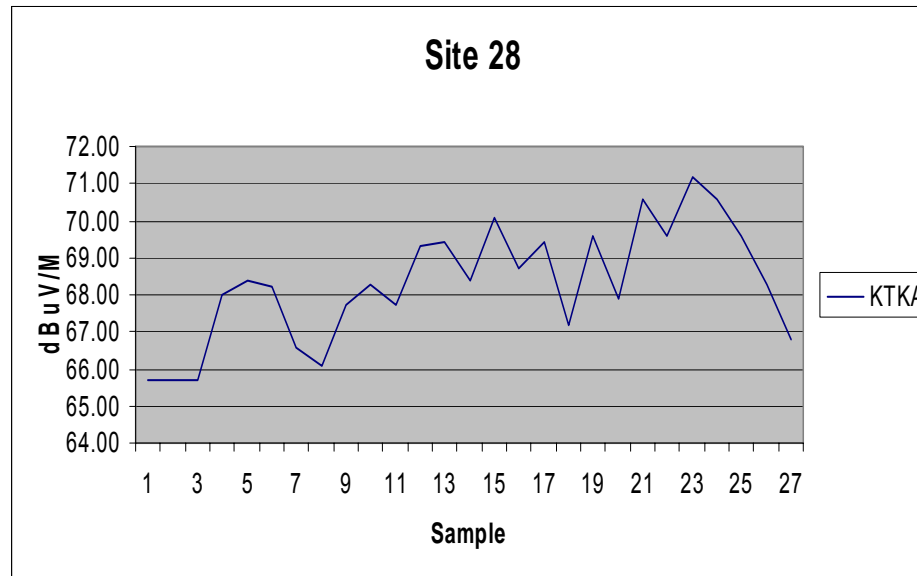
' JobName=KTKA2.dto
 ' JobFileVersion=1.02
 ' Locked=No
 ' IncludeComment=Yes
 ' FullDataRecords=Yes
 ' SignalUnits=dBuV/M
 ' SpaceUnits=English
 ' RFAmp=Off
 ' Bandwidth=WB
 ' DelayDimension=Time
 ' Delay=1

' FreqListLength=1

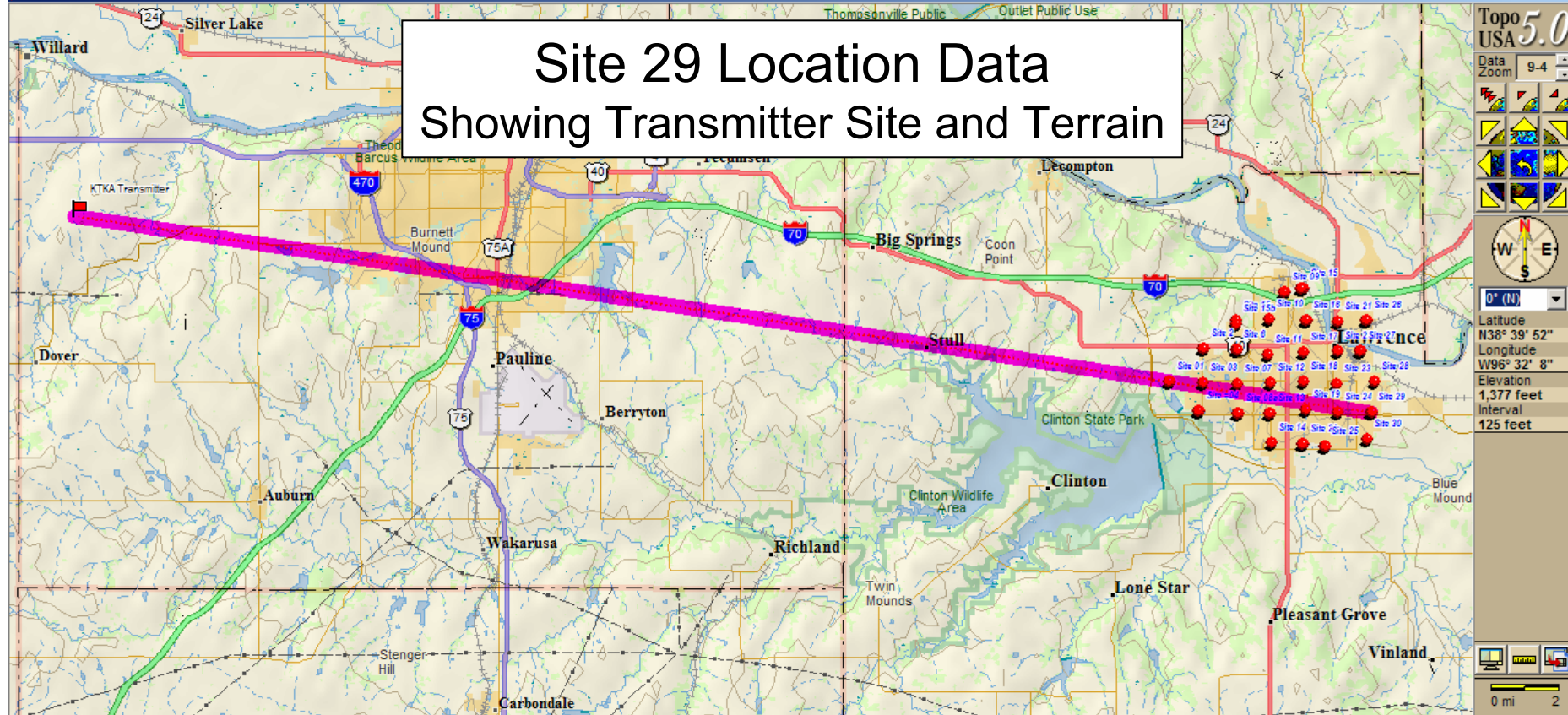
' Freq 1= 681 Freq 1 38.6 1844.8 27 Total dBuV divided by Count

' Comment=st28

| | | Total | Count | | | Avg | | | | | |
|-----------|----------|--------------|-------------|-----------------------------|------------------|-----------|------------|-----|---|---|-----|
| | | 1844.8 | 27 | Total dBuV divided by Count | | Elevation | | | | | |
| | | 68.33 dBuV/M | | | | 914.29 | | | | | |
| 4/13/2005 | 15:41:38 | 681.25 MHz | 65.7 dBuV/M | 38.95663 | -95.21337 Freq 1 | 38.6 | 908.2 Feet | Deg | 1 | 9 | 1.8 |
| 4/13/2005 | 15:41:40 | 681.25 MHz | 65.7 dBuV/M | 38.95663 | -95.21337 Freq 1 | 38.6 | 911.1 Feet | Deg | 1 | 9 | 2.3 |
| 4/13/2005 | 15:41:41 | 681.25 MHz | 65.7 dBuV/M | 38.95663 | -95.21337 Freq 1 | 38.6 | 913.1 Feet | Deg | 1 | 9 | 2 |
| 4/13/2005 | 15:41:42 | 681.25 MHz | 68 dBuV/M | 38.95663 | -95.21337 Freq 1 | 38.6 | 913.1 Feet | Deg | 1 | 9 | 2 |
| 4/13/2005 | 15:41:44 | 681.25 MHz | 68.4 dBuV/M | 38.95665 | -95.21338 Freq 1 | 38.6 | 914.1 Feet | Deg | 1 | 8 | 1.8 |
| 4/13/2005 | 15:41:45 | 681.25 MHz | 68.2 dBuV/M | 38.95665 | -95.21338 Freq 1 | 38.6 | 915.1 Feet | Deg | 1 | 8 | 2.3 |
| 4/13/2005 | 15:41:46 | 681.25 MHz | 66.6 dBuV/M | 38.95665 | -95.21338 Freq 1 | 38.6 | 915.1 Feet | Deg | 1 | 8 | 2.3 |
| 4/13/2005 | 15:41:48 | 681.25 MHz | 66.1 dBuV/M | 38.95663 | -95.2134 Freq 1 | 38.6 | 915.4 Feet | Deg | 1 | 9 | 2.4 |
| 4/13/2005 | 15:41:49 | 681.25 MHz | 67.7 dBuV/M | 38.95663 | -95.21342 Freq 1 | 38.6 | 914.7 Feet | Deg | 1 | 9 | 3 |
| 4/13/2005 | 15:41:51 | 681.25 MHz | 68.3 dBuV/M | 38.95662 | -95.21342 Freq 1 | 38.6 | 914.4 Feet | Deg | 1 | 9 | 2 |
| 4/13/2005 | 15:41:52 | 681.25 MHz | 67.7 dBuV/M | 38.95662 | -95.21342 Freq 1 | 38.6 | 914.4 Feet | Deg | 1 | 9 | 2 |
| 4/13/2005 | 15:41:54 | 681.25 MHz | 69.3 dBuV/M | 38.95662 | -95.21343 Freq 1 | 38.6 | 913.1 Feet | Deg | 1 | 9 | 2.1 |
| 4/13/2005 | 15:41:55 | 681.25 MHz | 69.4 dBuV/M | 38.95662 | -95.21345 Freq 1 | 38.6 | 913.1 Feet | Deg | 1 | 9 | 2.3 |
| 4/13/2005 | 15:41:57 | 681.25 MHz | 68.4 dBuV/M | 38.95662 | -95.21345 Freq 1 | 38.6 | 913.1 Feet | Deg | 1 | 9 | 2.3 |
| 4/13/2005 | 15:41:58 | 681.25 MHz | 70.1 dBuV/M | 38.95662 | -95.21347 Freq 1 | 38.6 | 914.1 Feet | Deg | 1 | 8 | 2.4 |
| 4/13/2005 | 15:41:59 | 681.25 MHz | 68.7 dBuV/M | 38.95662 | -95.21348 Freq 1 | 38.6 | 917 Feet | Deg | 1 | 8 | 2.9 |
| 4/13/2005 | 15:42:01 | 681.25 MHz | 69.4 dBuV/M | 38.95662 | -95.2135 Freq 1 | 38.6 | 918 Feet | Deg | 1 | 8 | 3 |
| 4/13/2005 | 15:42:02 | 681.25 MHz | 67.2 dBuV/M | 38.95662 | -95.2135 Freq 1 | 38.6 | 918 Feet | Deg | 1 | 8 | 3 |
| 4/13/2005 | 15:42:03 | 681.25 MHz | 69.6 dBuV/M | 38.9566 | -95.21352 Freq 1 | 38.6 | 919.7 Feet | Deg | 1 | 7 | 3.5 |
| 4/13/2005 | 15:42:05 | 681.25 MHz | 67.9 dBuV/M | 38.9566 | -95.21353 Freq 1 | 38.6 | 917.7 Feet | Deg | 1 | 7 | 3.5 |
| 4/13/2005 | 15:42:06 | 681.25 MHz | 70.6 dBuV/M | 38.9566 | -95.21353 Freq 1 | 38.6 | 917.7 Feet | Deg | 1 | 7 | 3.5 |
| 4/13/2005 | 15:42:08 | 681.25 MHz | 69.6 dBuV/M | 38.9566 | -95.21355 Freq 1 | 38.6 | 915.7 Feet | Deg | 1 | 7 | 3.6 |
| 4/13/2005 | 15:42:09 | 681.25 MHz | 71.2 dBuV/M | 38.9566 | -95.21357 Freq 1 | 38.6 | 912.8 Feet | Deg | 1 | 7 | 3.4 |
| 4/13/2005 | 15:42:11 | 681.25 MHz | 70.6 dBuV/M | 38.9566 | -95.21357 Freq 1 | 38.6 | 912.8 Feet | Deg | 1 | 7 | 3.4 |
| 4/13/2005 | 15:42:12 | 681.25 MHz | 69.6 dBuV/M | 38.9566 | -95.21358 Freq 1 | 38.6 | 911.8 Feet | Deg | 1 | 7 | 3.4 |
| 4/13/2005 | 15:42:13 | 681.25 MHz | 68.3 dBuV/M | 38.9566 | -95.2136 Freq 1 | 38.6 | 911.5 Feet | Deg | 1 | 7 | 3.4 |
| 4/13/2005 | 15:42:15 | 681.25 MHz | 66.8 dBuV/M | 38.9566 | -95.21362 Freq 1 | 38.6 | 911.1 Feet | Deg | 1 | 9 | 3.3 |



Site 29 Location Data Showing Transmitter Site and Terrain



Topo USA 5.0

Data Zoom 9-4

Latitude N38° 39' 52"

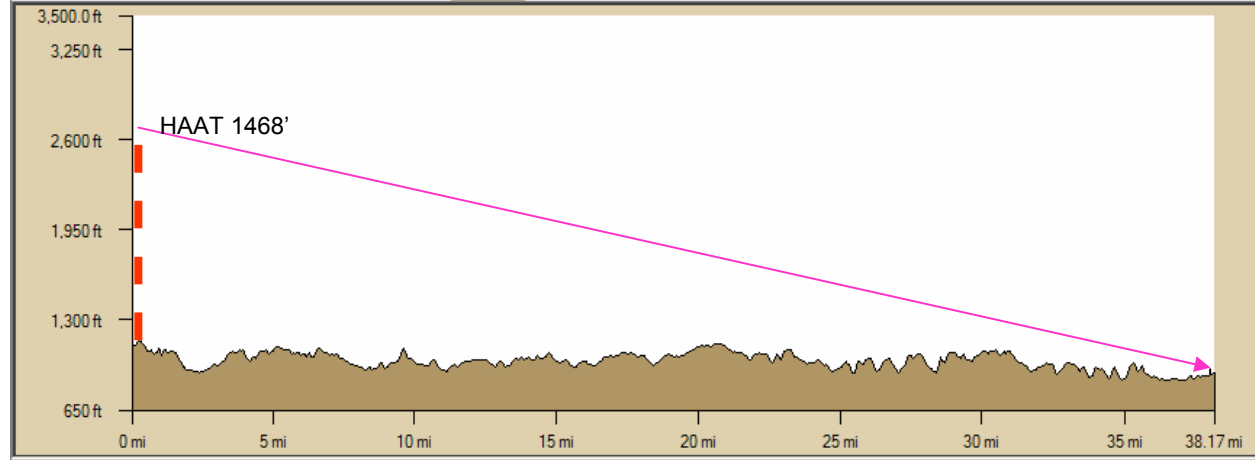
Longitude W96° 32' 8"

Elevation 1,377 feet

Interval 125 feet

0 mi 2

Map Files Find Print Draw GPS Route Profile 3-D Info NetLink Map Display Handheld Export



Latitude: N38° 56' 36.24"

Longitude: W95° 12' 54.48"

Lin Dist: 38.13 mi

Terr Dist: 38.17 mi

Climb Dist: 19.21 mi

Desc Dist: 18.96 mi

Elev: 918.9 ft

Elev Gain: -207.4 ft

Climb Elev: 3,216.6 ft

Desc Elev: 3,424.0 ft

Grade: 3

Avg Grade: 3

☐ Show Text

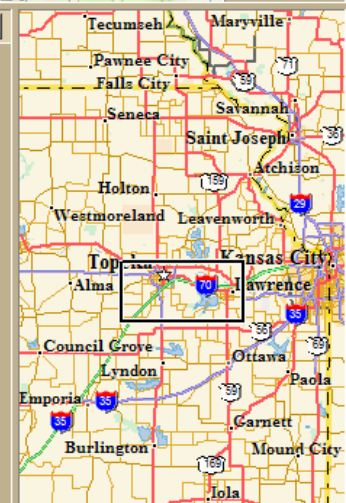
Manual Scale

☒ Max Elev 3500.00 ft

☐ Min Elev 820.01 ft

☒ Increase Res On Scale

Reverse Clear More



Location: Site 29

Date: 13 April 2005

Time: 1549

Temperature: 66°F

Dew Point: 39°F

Humidity: 37%

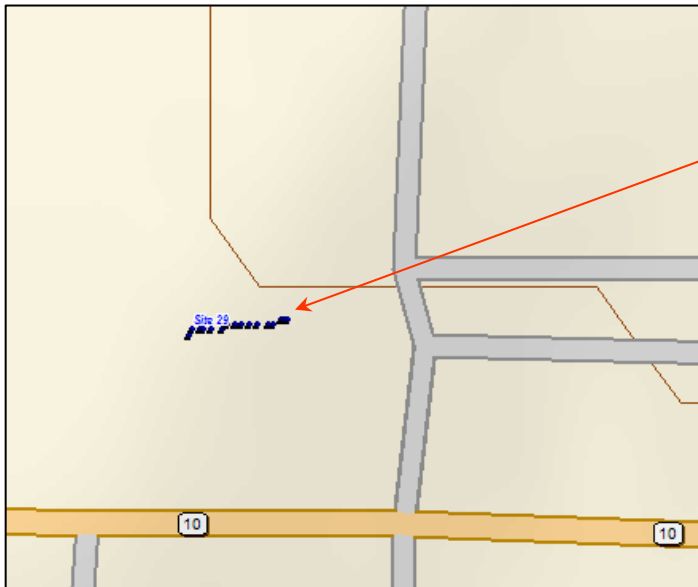
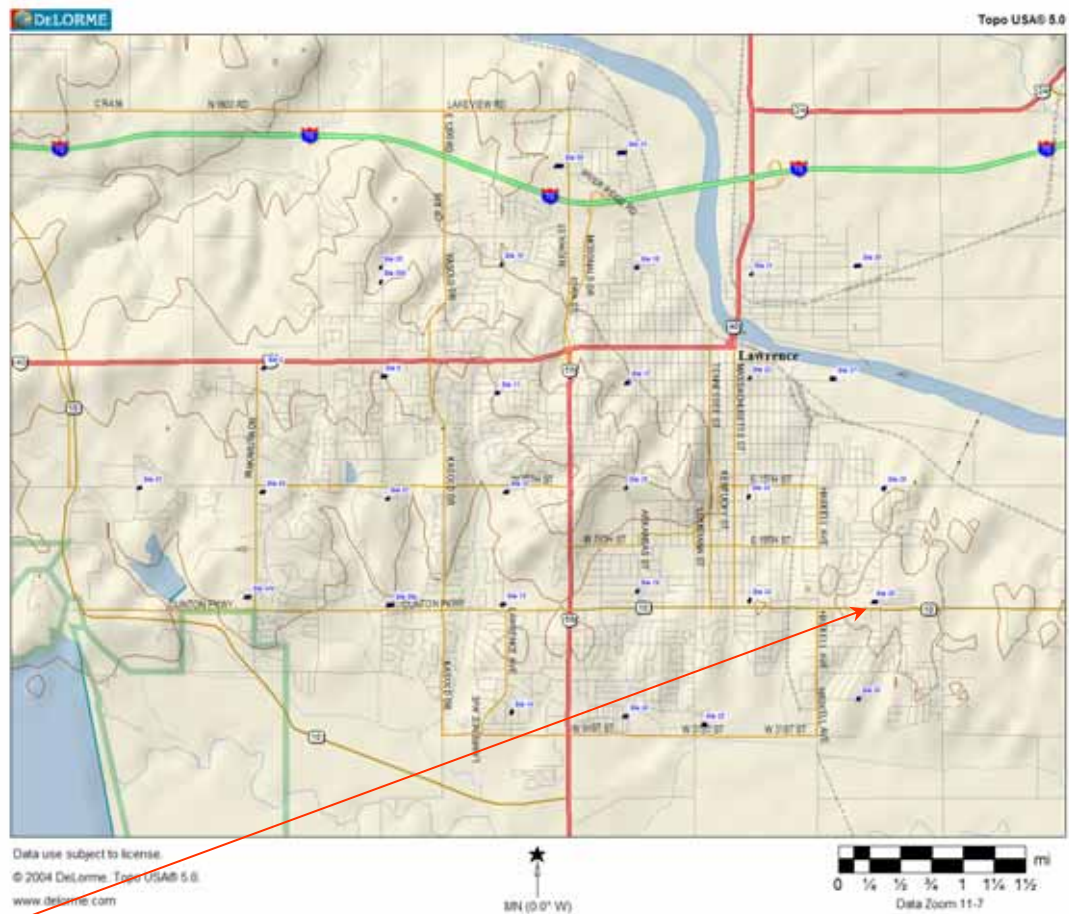
Pressure: 30.07"

Visibility: 10 miles

Winds: NE @ 16.1MPH

Conditions: Clear

77.38 dBuV/M
942.85' Average Elevation



Notes:

Antenna is vehicle mounted, 30' above ground level
Antenna oriented towards transmitter

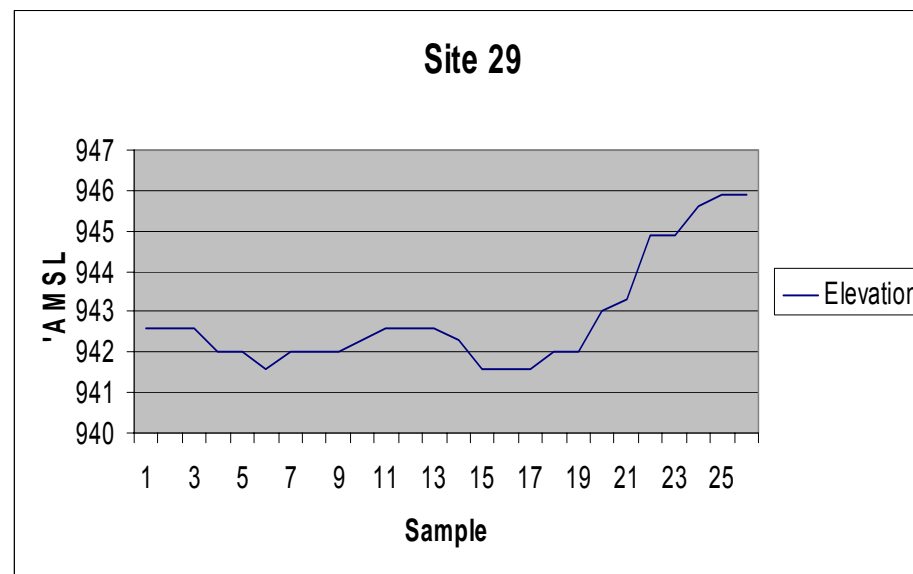
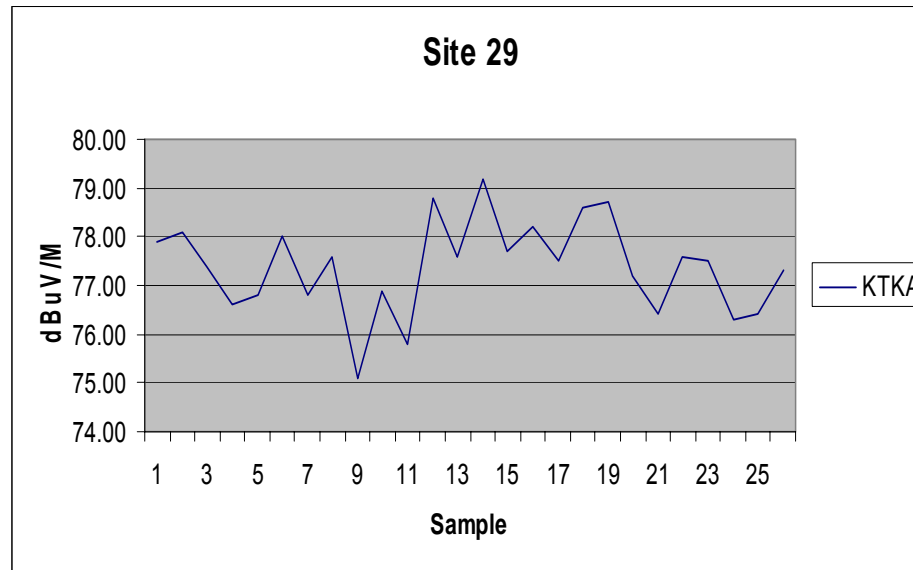
The adjacent picture indicates the sample points of the test and is present in the logged information.

' JobName=KTKA2.dto
 ' JobFileVersion=1.02
 ' Locked=No
 ' IncludeComment=Yes
 ' FullDataRecords=Yes
 ' SignalUnits=dBuV/M
 ' SpaceUnits=English
 ' RFAmp=Off
 ' Bandwidth=WB
 ' DelayDimension=Time
 ' Delay=1

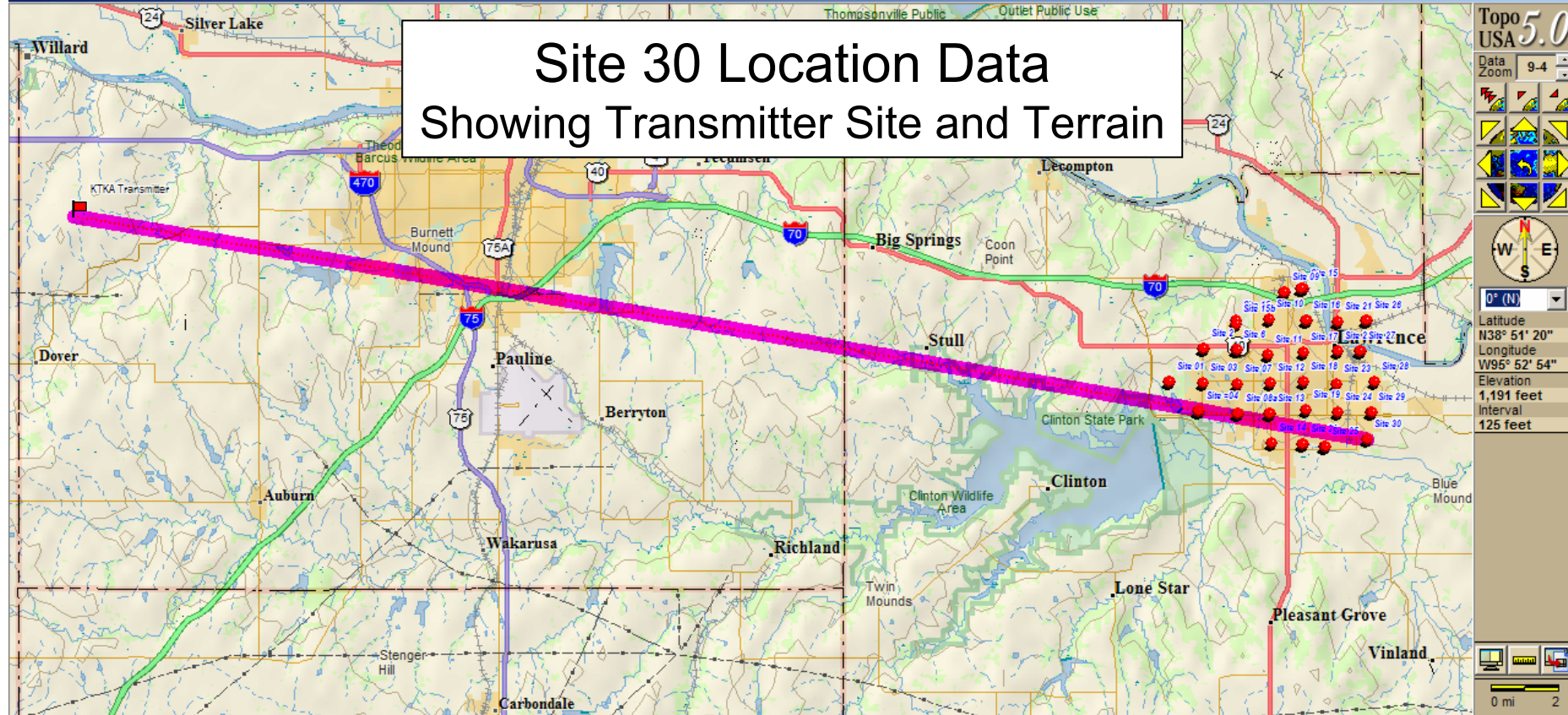
' FreqListLength=1
 ' Freq 1= 681 Freq 1 38.6
 ' Comment=st29

| Total | Count | Avg |
|--------------|-------|-----------|
| 2012 | 26 | Elevation |
| 77.38 dBuV/M | | 942.85 |

| | | Total dBuV divided by Count | | Avg | | | | | | | |
|-----------|----------|-----------------------------|-------------|----------|-----------|--------|------|-------|------|-----|---------|
| | | | | | | | | | | | |
| 4/13/2005 | 15:49:47 | 681.25 MHz | 77.9 dBuV/M | 38.94338 | -95.21515 | Freq 1 | 38.6 | 942.6 | Feet | Deg | 1 9 1 |
| 4/13/2005 | 15:49:49 | 681.25 MHz | 78.1 dBuV/M | 38.94338 | -95.21515 | Freq 1 | 38.6 | 942.6 | Feet | Deg | 1 9 1 |
| 4/13/2005 | 15:49:50 | 681.25 MHz | 77.4 dBuV/M | 38.94338 | -95.21515 | Freq 1 | 38.6 | 942.6 | Feet | Deg | 1 9 0.9 |
| 4/13/2005 | 15:49:52 | 681.25 MHz | 76.6 dBuV/M | 38.94338 | -95.21515 | Freq 1 | 38.6 | 942 | Feet | Deg | 1 9 1 |
| 4/13/2005 | 15:49:53 | 681.25 MHz | 76.8 dBuV/M | 38.94338 | -95.21515 | Freq 1 | 38.6 | 942 | Feet | Deg | 1 9 1 |
| 4/13/2005 | 15:49:54 | 681.25 MHz | 78 dBuV/M | 38.9434 | -95.21513 | Freq 1 | 38.6 | 941.6 | Feet | Deg | 1 9 1 |
| 4/13/2005 | 15:49:56 | 681.25 MHz | 76.8 dBuV/M | 38.9434 | -95.2151 | Freq 1 | 38.6 | 942 | Feet | Deg | 1 9 1 |
| 4/13/2005 | 15:49:57 | 681.25 MHz | 77.6 dBuV/M | 38.9434 | -95.21508 | Freq 1 | 38.6 | 942 | Feet | Deg | 1 9 1.1 |
| 4/13/2005 | 15:49:59 | 681.25 MHz | 75.1 dBuV/M | 38.9434 | -95.21508 | Freq 1 | 38.6 | 942 | Feet | Deg | 1 9 1.1 |
| 4/13/2005 | 15:50:00 | 681.25 MHz | 76.9 dBuV/M | 38.9434 | -95.21505 | Freq 1 | 38.6 | 942.3 | Feet | Deg | 1 9 1.2 |
| 4/13/2005 | 15:50:02 | 681.25 MHz | 75.8 dBuV/M | 38.9434 | -95.215 | Freq 1 | 38.6 | 942.6 | Feet | Deg | 1 9 1.2 |
| 4/13/2005 | 15:50:03 | 681.25 MHz | 78.8 dBuV/M | 38.9434 | -95.215 | Freq 1 | 38.6 | 942.6 | Feet | Deg | 1 9 1.2 |
| 4/13/2005 | 15:50:04 | 681.25 MHz | 77.6 dBuV/M | 38.94342 | -95.21498 | Freq 1 | 38.6 | 942.6 | Feet | Deg | 1 9 1.3 |
| 4/13/2005 | 15:50:06 | 681.25 MHz | 79.2 dBuV/M | 38.94342 | -95.21495 | Freq 1 | 38.6 | 942.3 | Feet | Deg | 1 9 1.2 |
| 4/13/2005 | 15:50:07 | 681.25 MHz | 77.7 dBuV/M | 38.94342 | -95.21492 | Freq 1 | 38.6 | 941.6 | Feet | Deg | 1 9 1.3 |
| 4/13/2005 | 15:50:09 | 681.25 MHz | 78.2 dBuV/M | 38.94342 | -95.21492 | Freq 1 | 38.6 | 941.6 | Feet | Deg | 1 9 1.3 |
| 4/13/2005 | 15:50:10 | 681.25 MHz | 77.5 dBuV/M | 38.94342 | -95.21488 | Freq 1 | 38.6 | 941.6 | Feet | Deg | 1 9 1.3 |
| 4/13/2005 | 15:50:12 | 681.25 MHz | 78.6 dBuV/M | 38.94342 | -95.21485 | Freq 1 | 38.6 | 942 | Feet | Deg | 1 8 1.6 |
| 4/13/2005 | 15:50:13 | 681.25 MHz | 78.7 dBuV/M | 38.94342 | -95.21485 | Freq 1 | 38.6 | 942 | Feet | Deg | 1 8 1.6 |
| 4/13/2005 | 15:50:14 | 681.25 MHz | 77.2 dBuV/M | 38.94342 | -95.2148 | Freq 1 | 38.6 | 943 | Feet | Deg | 1 9 1.1 |
| 4/13/2005 | 15:50:16 | 681.25 MHz | 76.4 dBuV/M | 38.94342 | -95.21478 | Freq 1 | 38.6 | 943.3 | Feet | Deg | 1 9 1.9 |
| 4/13/2005 | 15:50:17 | 681.25 MHz | 77.6 dBuV/M | 38.94343 | -95.21475 | Freq 1 | 38.6 | 944.9 | Feet | Deg | 1 9 1.3 |
| 4/13/2005 | 15:50:19 | 681.25 MHz | 77.5 dBuV/M | 38.94343 | -95.21475 | Freq 1 | 38.6 | 944.9 | Feet | Deg | 1 9 1.3 |
| 4/13/2005 | 15:50:20 | 681.25 MHz | 76.3 dBuV/M | 38.94343 | -95.21473 | Freq 1 | 38.6 | 945.6 | Feet | Deg | 1 9 1.3 |
| 4/13/2005 | 15:50:22 | 681.25 MHz | 76.4 dBuV/M | 38.94343 | -95.21472 | Freq 1 | 38.6 | 945.9 | Feet | Deg | 1 9 1.3 |
| 4/13/2005 | 15:50:23 | 681.25 MHz | 77.3 dBuV/M | 38.94343 | -95.21472 | Freq 1 | 38.6 | 945.9 | Feet | Deg | 1 9 1.3 |



Site 30 Location Data Showing Transmitter Site and Terrain



Topo USA 5.0

Data Zoom 9-4

Latitude N38° 51' 20"

Longitude W95° 52' 54"

Elevation 1,191 feet

Interval 125 feet

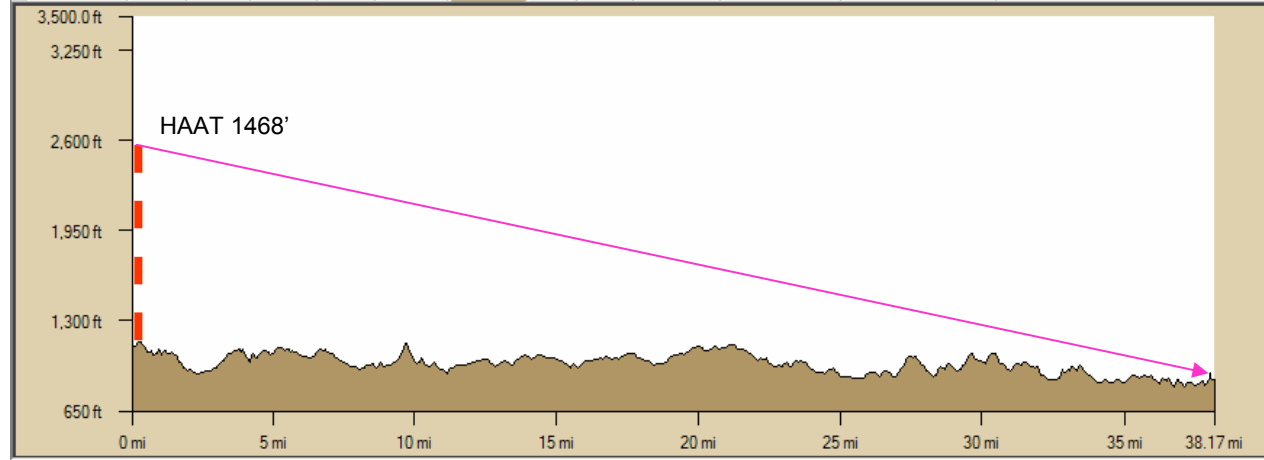
0° (N)

W E

S

0 mi 2

Map Files Find Print Draw GPS Route Profile 3-D Info [NetLink](#) Map Display Handheld Export



Latitude: N38° 55' 56.04"

Longitude: W95° 13' 2.46"

Lin Dist: 38.14 mi

Terr Dist: 38.17 mi

Climb Dist: 18.52 mi

Desc Dist: 19.58 mi

Elev: 871.6 ft

Elev Gain: -254.6 ft

Climb Elev: 2,825.9 ft

Desc Elev: 3,080.5 ft

Grade: 2

Avg Grade: 2

☐ Show Text

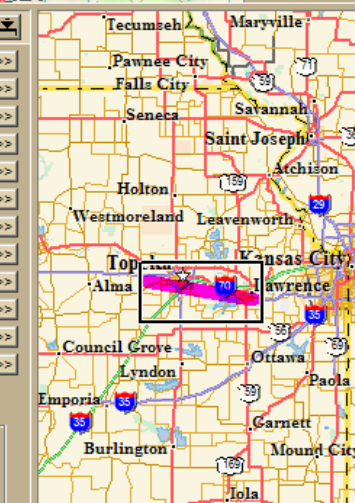
Manual Scale

☒ Max Elev 3500 ft

☐ Min Elev 820.01 ft

☒ Increase Res On Scale

Reverse Clear More



Location: Site 30

Date: 13 April 2005

Time: 1827

Temperature: 64.9°F

Dew Point: 34°F

Humidity: 32%

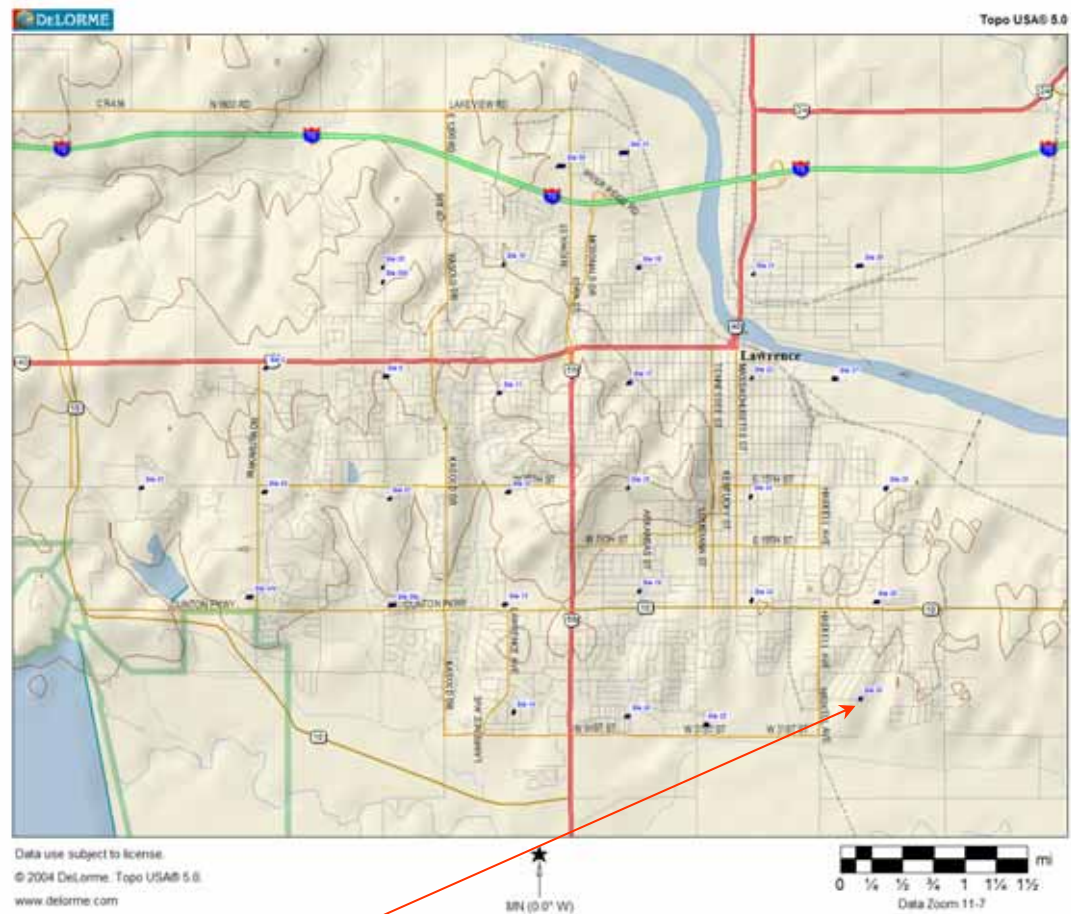
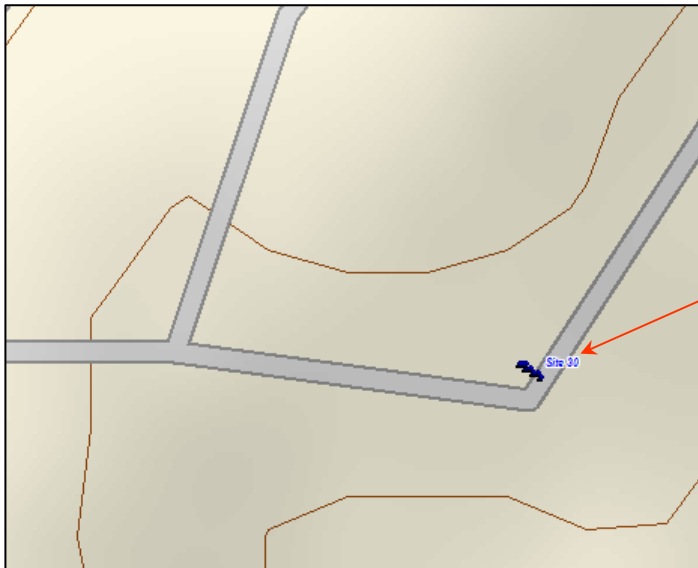
Pressure: 30.09"

Visibility: 10 miles

Winds: NE @ 11.5MPH

Conditions: Clear

73.93 dBuV/M
874.14' Average Elevation



Notes:

Antenna is vehicle mounted, 30' above ground level
Antenna oriented towards transmitter

Location is $\approx 815'$ W of grid intersection due to vehicle inaccessibility

The adjacent picture indicates the sample points of the test and is present in the logged information.

' JobName=KTKA2.dto
 ' JobFileVersion=1.02
 ' Locked=No
 ' IncludeComment=Yes
 ' FullDataRecords=Yes
 ' SignalUnits=dBuV/M
 ' SpaceUnits=English
 ' RFAmp=Off
 ' Bandwidth=WB
 ' DelayDimension=Time
 ' Delay=1

' FreqListLength=1
 ' Freq 1= 681 Freq 1 38.6 Total Count 1922.2 26 Total dBuV divided by Count
 ' Comment=st30

| | | | | 73.93 dBuV/M | | | | 874.14 | | | | |
|-----------|----------|------------|-------------|--------------|-----------|--------|------|------------|-----|---|---|-----|
| 4/13/2005 | 18:27:34 | 681.25 MHz | 71.8 dBuV/M | 38.93218 | -95.21725 | Freq 1 | 38.6 | 879.3 Feet | Deg | 1 | 8 | 1.2 |
| 4/13/2005 | 18:27:36 | 681.25 MHz | 71.6 dBuV/M | 38.93218 | -95.21725 | Freq 1 | 38.6 | 879.3 Feet | Deg | 1 | 8 | 1.2 |
| 4/13/2005 | 18:27:37 | 681.25 MHz | 70.9 dBuV/M | 38.93218 | -95.21725 | Freq 1 | 38.6 | 878.3 Feet | Deg | 1 | 8 | 1.2 |
| 4/13/2005 | 18:27:39 | 681.25 MHz | 70.9 dBuV/M | 38.93218 | -95.21725 | Freq 1 | 38.6 | 877.3 Feet | Deg | 1 | 8 | 1.2 |
| 4/13/2005 | 18:27:40 | 681.25 MHz | 70.3 dBuV/M | 38.93218 | -95.21725 | Freq 1 | 38.6 | 876 Feet | Deg | 1 | 8 | 1.2 |
| 4/13/2005 | 18:27:41 | 681.25 MHz | 70.8 dBuV/M | 38.93218 | -95.21725 | Freq 1 | 38.6 | 876 Feet | Deg | 1 | 8 | 1.2 |
| 4/13/2005 | 18:27:43 | 681.25 MHz | 73.1 dBuV/M | 38.93218 | -95.21725 | Freq 1 | 38.6 | 875.4 Feet | Deg | 1 | 8 | 1.2 |
| 4/13/2005 | 18:27:44 | 681.25 MHz | 73.2 dBuV/M | 38.93218 | -95.21725 | Freq 1 | 38.6 | 875 Feet | Deg | 1 | 8 | 1.3 |
| 4/13/2005 | 18:27:46 | 681.25 MHz | 73.2 dBuV/M | 38.93218 | -95.21725 | Freq 1 | 38.6 | 875 Feet | Deg | 1 | 8 | 1.3 |
| 4/13/2005 | 18:27:47 | 681.25 MHz | 74.8 dBuV/M | 38.9322 | -95.21727 | Freq 1 | 38.6 | 875.7 Feet | Deg | 1 | 8 | 1.3 |
| 4/13/2005 | 18:27:49 | 681.25 MHz | 72.2 dBuV/M | 38.9322 | -95.21728 | Freq 1 | 38.6 | 876 Feet | Deg | 1 | 8 | 1.3 |
| 4/13/2005 | 18:27:50 | 681.25 MHz | 73.1 dBuV/M | 38.93222 | -95.2173 | Freq 1 | 38.6 | 875.4 Feet | Deg | 1 | 8 | 1.4 |
| 4/13/2005 | 18:27:51 | 681.25 MHz | 75.2 dBuV/M | 38.93222 | -95.2173 | Freq 1 | 38.6 | 875.4 Feet | Deg | 1 | 8 | 1.4 |
| 4/13/2005 | 18:27:53 | 681.25 MHz | 74.9 dBuV/M | 38.93222 | -95.2173 | Freq 1 | 38.6 | 875 Feet | Deg | 1 | 8 | 1.3 |
| 4/13/2005 | 18:27:54 | 681.25 MHz | 76.4 dBuV/M | 38.93222 | -95.21732 | Freq 1 | 38.6 | 874.4 Feet | Deg | 1 | 8 | 1.2 |
| 4/13/2005 | 18:27:56 | 681.25 MHz | 76 dBuV/M | 38.93222 | -95.21732 | Freq 1 | 38.6 | 874.4 Feet | Deg | 1 | 8 | 1.2 |
| 4/13/2005 | 18:27:57 | 681.25 MHz | 76.2 dBuV/M | 38.93223 | -95.21732 | Freq 1 | 38.6 | 873.1 Feet | Deg | 1 | 8 | 1.3 |
| 4/13/2005 | 18:27:59 | 681.25 MHz | 75.2 dBuV/M | 38.93223 | -95.21732 | Freq 1 | 38.6 | 872.4 Feet | Deg | 1 | 8 | 1.3 |
| 4/13/2005 | 18:28:00 | 681.25 MHz | 76.3 dBuV/M | 38.93223 | -95.21733 | Freq 1 | 38.6 | 871.8 Feet | Deg | 1 | 8 | 1.3 |
| 4/13/2005 | 18:28:02 | 681.25 MHz | 75.9 dBuV/M | 38.93223 | -95.21733 | Freq 1 | 38.6 | 871.8 Feet | Deg | 1 | 8 | 1.3 |
| 4/13/2005 | 18:28:03 | 681.25 MHz | 74.7 dBuV/M | 38.93223 | -95.21733 | Freq 1 | 38.6 | 870.8 Feet | Deg | 1 | 8 | 1.3 |
| 4/13/2005 | 18:28:04 | 681.25 MHz | 74.7 dBuV/M | 38.93223 | -95.21733 | Freq 1 | 38.6 | 870.1 Feet | Deg | 1 | 8 | 1.3 |
| 4/13/2005 | 18:28:06 | 681.25 MHz | 75.3 dBuV/M | 38.93223 | -95.21733 | Freq 1 | 38.6 | 870.1 Feet | Deg | 1 | 8 | 1.3 |
| 4/13/2005 | 18:28:07 | 681.25 MHz | 75.6 dBuV/M | 38.93223 | -95.21735 | Freq 1 | 38.6 | 870.4 Feet | Deg | 1 | 8 | 1.3 |
| 4/13/2005 | 18:28:09 | 681.25 MHz | 74.9 dBuV/M | 38.93223 | -95.21735 | Freq 1 | 38.6 | 869.8 Feet | Deg | 1 | 8 | 1.4 |
| 4/13/2005 | 18:28:10 | 681.25 MHz | 75 dBuV/M | 38.93223 | -95.21735 | Freq 1 | 38.6 | 869.5 Feet | Deg | 1 | 8 | 1.4 |

