

Educational Media Foundation
5700 West Oaks Blvd, Rocklin, CA, 95843

Exhibit 12
Memphis, TN

REFERENCE CH# 244D - 96.7 MHz, Pwr= 0.055 kw, HAAT=60.9 M, COR= 128 M DISPLAY DATES
35 10 41 N Average Protected F(50-50)= 6.89 km DATA 06-18-03
89 53 28 W Ave. F(50-10) 40 dBu= 23.1 54 dBu= 9.9 80 dBu= 2.2 100 dBu= .5 SEARCH 06-23-03

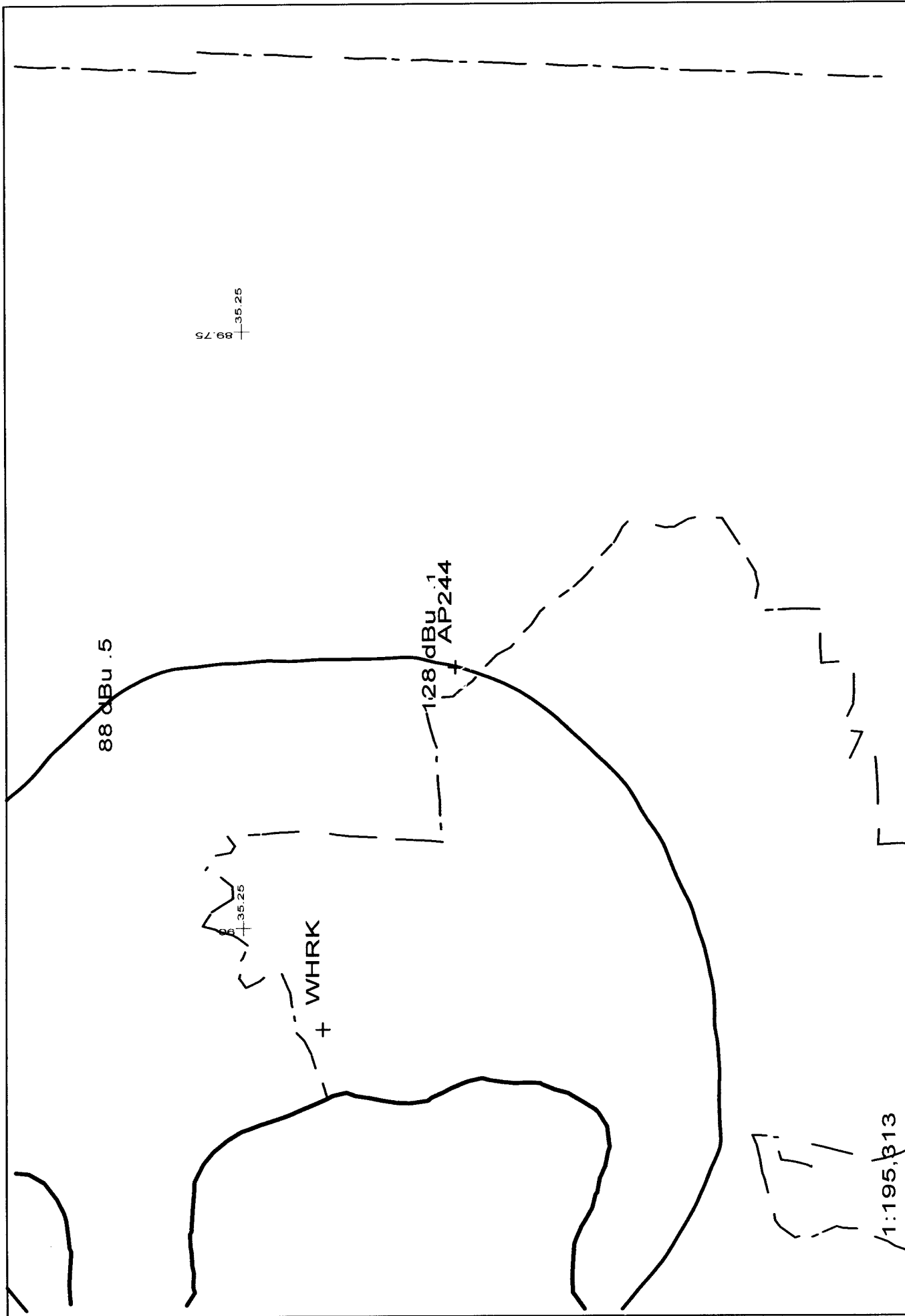
CH CITY	CALL	TYPE STATE	AZI. <--	DIST FILE #	LAT. LNG.	Pwr(kw) HAAT(M)	COR(M) INT(km)	PRO(km) LICENSEE	*IN* (Overlap in km)	*OUT*
244D Memphis	AP244	APP C TN	0.0 180.0	0.00 BNPFT20030314BHM	35 10 41 89 53 28	0.055 44	128 19.6	5.8 Educational Media Foundati	-25.27*	-25.46*
246C1 Memphis	WHRK	LIC CN TN	290.0 110.0	14.66 BLH5591	35 13 23 90 02 33	100.000 162	238 0.5	59.9 Clear Channel Broadcasting	0.87	-45.81*
242C1 Blytheville	KHLS	LIC NCX AR	0.7 180.7	79.98 BLH20020723AAB	35 53 56 89 52 48	100.000 135	207 0.5	56.4 Sudbury Services, Inc.	67.33	23.04
244A Bolivar	WMOD	LIC CN TN	84.7 264.7	91.40 BMLH19910730KC	35 15 00 88 53 28	3.000 104	223 17.2	24.7 Wmod, Inc.	9.48	49.56
241C3 Tunica	WYYL	LIC ZCN MS	206.3 26.3	55.85 BLH19980716KA	34 43 36 90 09 43	7.952 101	166 0.5	30.4 Flinn Broadcasting Corpora	46.88	24.96
243A Holly Springs	ALLO	VAC MS	149.4 329.4	62.60 RM10221	34 41 32 89 32 33	6.000 -127	0 8.0	15.8	33.43	38.80
244D Batesville	AP244	APP C MS	184.5 4.5	95.33 BNPFT20030317IAF	34 19 17 89 58 23	0.013 103	191 19.1	6.3 Educational Media Foundati	68.60	69.90
244C2 Newport	KOKR«	LIC CN AR	284.2 104.2	144.68 BLH19971020KD	35 29 16 91 26 13	40.000 210	271 22.2	56.1 Newport Broadcasting Compa	-2.25	66.32
244A Pontotoc	WSELF	LIC HN MS	140.1 320.1	133.46 BLH3172	34 15 10 88 57 36	3.000 86	206 19.5	22.5 ollie Collins, Jr.	54.41	91.49
243D Holly Springs	AP243	APP C MS	139.6 319.6	63.38 BNPFT20030317JHH	34 44 34 89 26 30	0.075 155	308 8.3	11.9 Radio Assist Ministry Inc.	39.93	43.11

*****Affixed to 'IN' or 'Out' values = site inside protected contour.
ERP and HAAT are on direct line to and from reference station.
"«" = Station meets FCC minimum distance spacing for its class.

Exhibit 12 (Compliance with CFR 74.1204)

The proposed FM Translator is located within the protected 60 dBu contour of second adjacent channel station WHRK, channel 246C1, Memphis, TN. The predicted F(50-50) field strength of WHRK at the proposed translator site is 88 dBu, see Exhibit 12A. Therefore, the respective predicted interfering contour generated by the proposed FM Translator is 128 dBu. This interfering contour extends less than 20 meters from the proposed transmit antenna, and the area of overlap does not reach the ground.

Therefore, EMF respectfully requests a waiver of C.F.R. 74.1204 based on no population within the area of predicted interference.



<p>Exhibit 12A</p> <p>- 06/03</p>	<p>AP244 244D .055kW 128M AMSL</p> <p>N. Lat. 35 10 41 W. Lng. 89 53 28</p>	<p>1:195,313</p>
-----------------------------------	---	------------------