

Exhibit 13.1 - Copy of Existing Antenna Structure Registration



Registration Detail

Reg Number	1031315	Status	Constructed
File Number	A0754568	Constructed	12/01/1995
EMI	No	Dismantled	
NEPA	No		

Antenna Structure

Structure Type TOWER - Free standing or Guyed Structure used for Commu

Location (in NAD83 Coordinates)

Lat/Long	26-45-43.2 N 080-04-41.1 W	Address	1785 HILL AVE
City, State	MANGONIA PARK , FL		
Zip	33407	County	PALM BEACH
Center of AM Array		Position of Tower in Array	

Heights (meters)

Elevation of Site Above Mean Sea Level	Overall Height Above Ground (AGL)
5.2	158.2
Overall Height Above Mean Sea Level	Overall Height Above Ground w/o Appurtenances
163.4	152.4

Painting and Lighting Specifications

FAA Chapters 4, 7, 12
 Paint and Light in Accordance with FAA Circular Number 70/7460-1K

FAA Notification

FAA Study	2011-ASO-7993-OE	FAA Issue Date	01/31/2012
-----------	------------------	----------------	------------

Owner & Contact Information

FRN	0009728882	Owner Entity Type	
-----	------------	-------------------	--

Owner

Pinnacle Towers Acquisition LLC
 Attention To: Regulatory Department
 2000 Corporate Drive
 Canonsburg , PA 15317

P: (724)416-2000
 F:
 E: Regulatory.Department@Crownncastle.com

Contact

Verre , Christine A
 2000 Corporate Drive
 Canonsburg , PA 15317

P: (336)643-2524
 F:
 E: Christine.Verre@Crownncastle.com

Last Action Status

Status	Constructed	Received	02/09/2012
Purpose	Notification	Entered	02/09/2012
Mode	Interactive		

Related Applications

02/09/2012	A0754567 - Modification (MD)
02/09/2012	A0754568 - Notification (NT)
07/21/2008	A0599914 - Modification (MD)

Related applications (12)

Comments

Comments

None

History

Date

Event

02/10/2012	Registration Printed
02/09/2012	ASR Application receipt email sent: Tower email
02/09/2012	Construction Notification Received

All History (25)

Automated Letters

02/10/2012	Authorization, Reference
07/22/2008	Authorization, Reference
08/31/2007	Authorization, Reference 578336
All letters (8)	

Exhibit 13.2

Vertical Plan of Antenna System

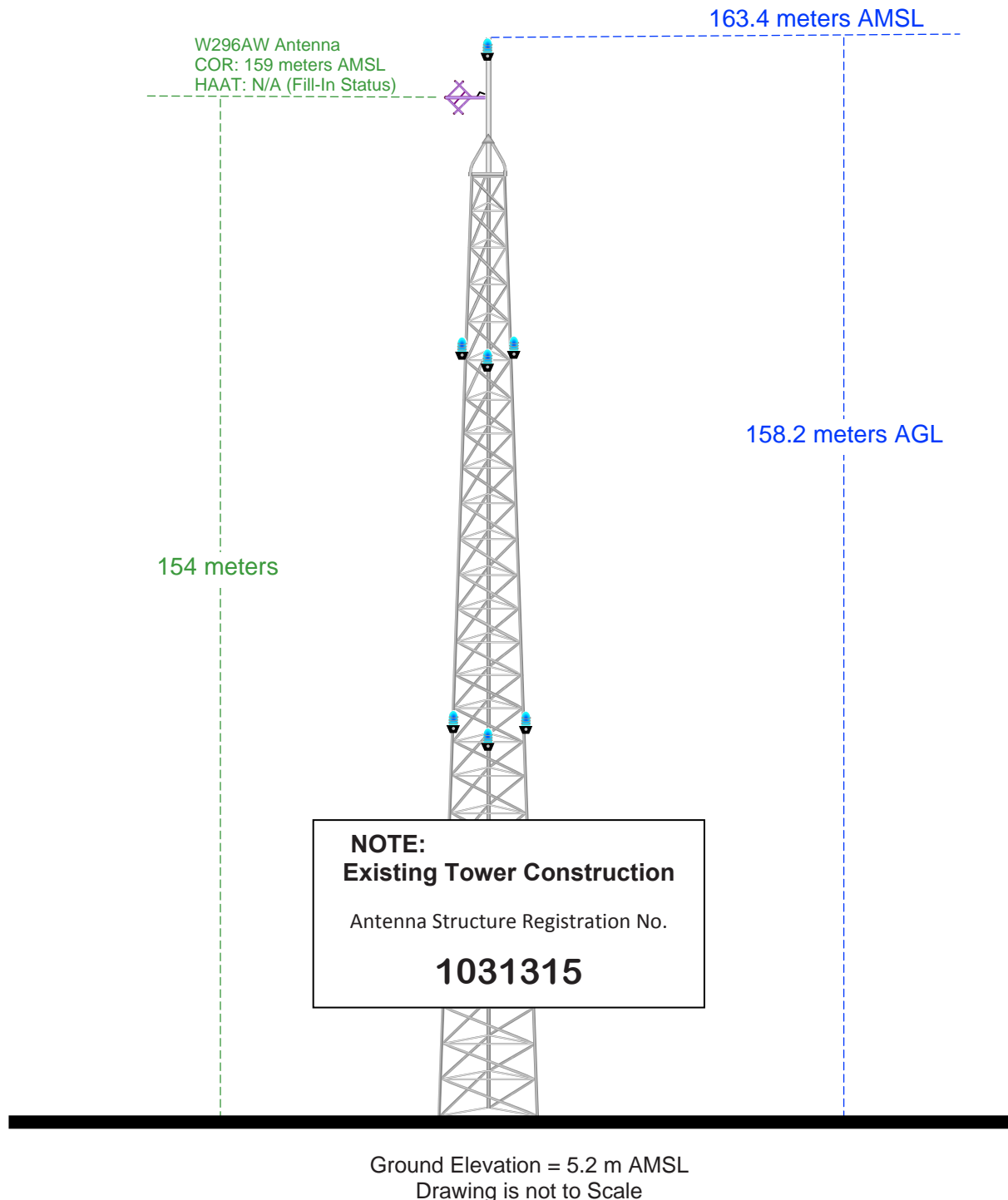
The site is located at 1785 Hill Avenue,
the city of Mangonia Park, Palm Beach County, Florida.

Site Location (NAD 27)

NL: 26° 45' 42"

WL: 80° 04' 42"

(26-45-43.2NL; 80-04-41.1WL NAD1983)





NED 03 sec terrain database
US Census 2010 PL database

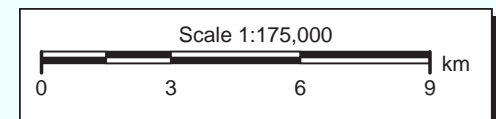
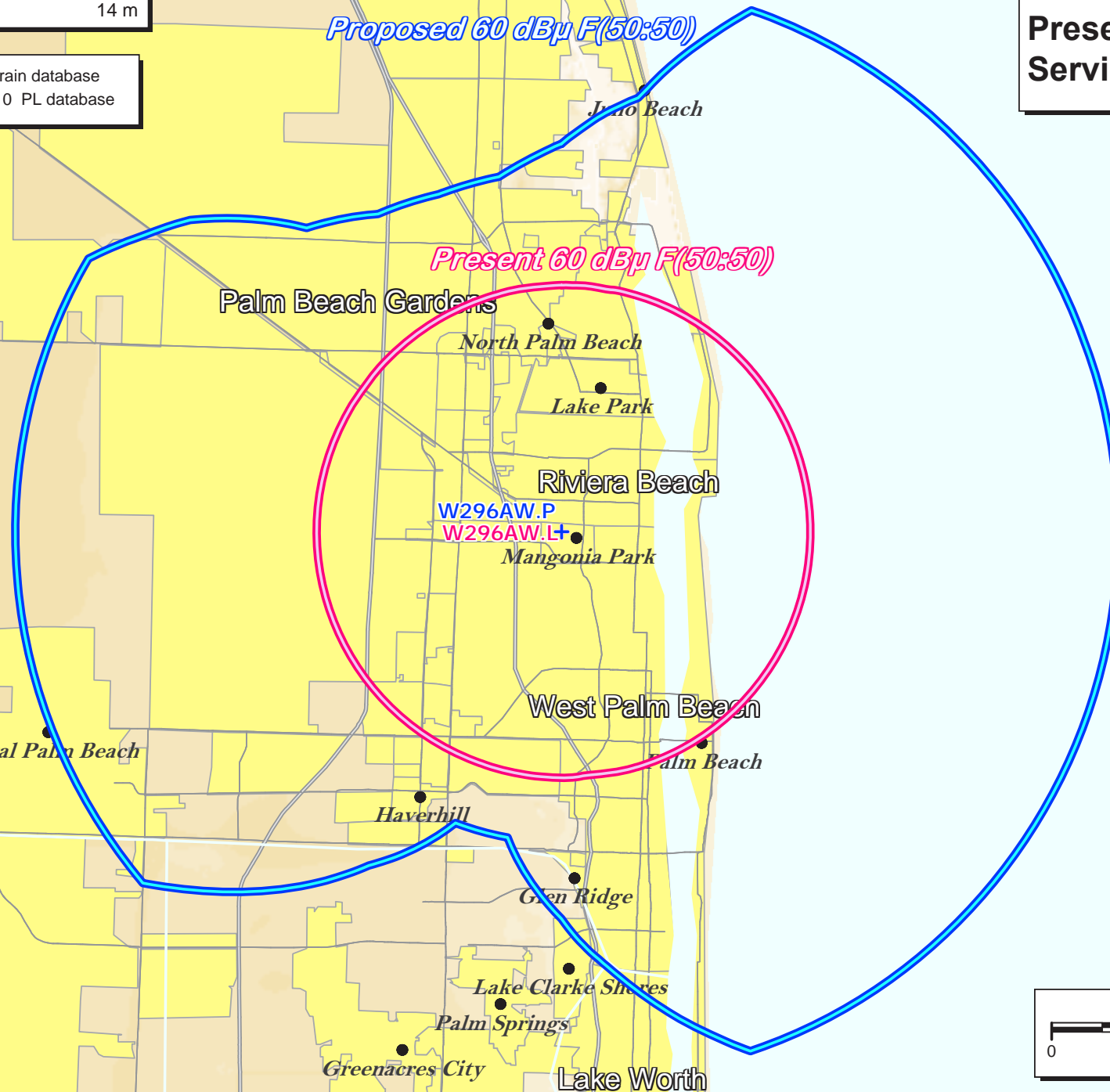
Exhibit 13.3 Present vs. Proposed Service Contour Study

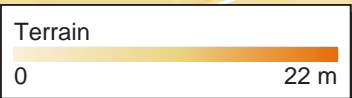
W296AW.P
Mangonia Park, FL
Proposed Operation
Facility ID: 82621
Latitude: 26-45-42 N
Longitude: 080-04-42 W
ERP: 0.25 kW
Channel: 296D
Frequency: 107.1 MHz
AMSL Height: 159.0 m
Horiz. Pattern: Directional

60 dBμ Contour
Total Population: 313,150
Total Area: 693 sq. km

W296AW.L
Mangonia Park, FL
BLFT19970507TJ
Facility ID: 82621
Latitude: 26-45-42 N
Longitude: 080-04-42 W
ERP: 0.01 kW
Channel: 296D
Frequency: 107.1 MHz
AMSL Height: 161.0 m
Horiz. Pattern: Omni

60 dBμ Contour
Total Population: 158,786
Total Area: 167 sq. km





NED 03 sec terrain database
US Census 2010 PL database

Exhibit 13.4 Proposed vs. Primary Service Contour Study

WLLY-FM
Palm Beach Gardens, FL
BLH20090403BRO
Facility ID: 24230
Latitude: 26-45-42 N
Longitude: 080-04-42 W
ERP: 6.00 kW
Channel: 258A
Frequency: 99.5 MHz
AMSL Height: 102.7 m
Horiz. Pattern: Omni

W296AW.P
Mangonia Park, FL
Proposed Operation
Facility ID: 82621
Latitude: 26-45-42 N
Longitude: 080-04-42 W
ERP: 0.25 kW
Channel: 296D
Frequency: 107.1 MHz
AMSL Height: 159.0 m
Horiz. Pattern: Directional

W296AW.P
WLLY-FM
Mangonia Park

Primary 60 dBμ F(50:50)

Proposed 60 dBμ F(50:50)

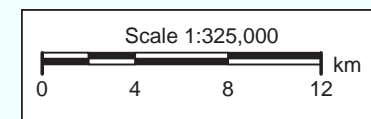


Exhibit 13.5

Tabulation of Proposed Commercial Allocation

Black Media Works, Inc.																		
REFERENCE		CH#	296D	-	107.1	MHz,	Pwr=	0.25	kW	DA,	HAAT=	156.3	M,	COR=	159	M	DISPLAY	DATES
26 45 42.0 N.		Average Protected F(50-50)= 16.3 km										DATA		03-01-13				
80 04 42.0 W.		Standard Directional										SEARCH		03-01-13				
CH	CALL	TYPE	ANT	AZI	DIST	LAT	PWR(kW)	INT(km)	PRO(km)	*IN*	*OUT*							
CITY	STATE		<--	FILE #		LNG	HAAT(M)	COR(M)	LICENSEE	(Overlap in km)								
296D	W296AW	LIC_CN	0.0	0.00		26 45 42.0	0.010	24.6	7.3	-36.1*	-45.6*							
Mangonia Park	FL	0.0	BLFT19970507TJ		80 04 42.0	157	161	Black Media Works, Inc.										
Translator for WJFP, Fort Pierce, FL																		
295D	W295BJ	LIC_C	341.3	30.94		27 01 31.0	0.190	23.5	15.6	-3.2	0.3							
Jupiter	FL	161.2	BLFT20101115FKT		80 10 43.0	166	169	North Palm Beach Broadcast										
296C1	WAOA-FM	LIC_CX	338.2	164.81		28 08 11.0	100.000	153.7	57.6	0.4	71.6							
Melbourne	FL	157.9	BMLH20070125ADK		80 42 12.0	148	151	Cumulus Licensing Lic										
296D	629412	APP_C	195.7	35.24		26 27 23.0	0.005	13.0	4.1	13.1	0.6							
Delray Beach	FL	15.6	BNPFT20030312AWK		80 10 26.0	76	77	Calvary Chapel Church, Inc										
242D	629020«	APP_C	347.0	18.95		26 55 42.0	0.170	13.7	92.0	9.5R	9.5M							
Jupiter	FL	167.0	BNPFT20030313AIM		80 07 17.0	31	35	Calvary Chapel Church, Inc										
242D	630817«	APP_C	347.0	18.95		26 55 42.0	0.250	13.7	92.0	9.5R	9.5M							
Jupiter	FL	167.0	BNPFT20030314BQP		80 07 17.0	29	33	Capstar Tx Limited Partner										
294C0	WRMA	LIC_ZCX	186.4	86.01		25 59 34.0	100.000	9.6	70.3	66.3	15.3							
Fort Lauderdale	FL	6.4	BLH20060612AAJ		80 10 27.0	300	302	Wrma Licensing, Inc.										
298C1	WAMR-FM	LIC_DC	188.4	89.28		25 58 02.0	95.000	10.1	72.3	69.6	16.6							
Miami	FL	8.4	BLH20050303ADC		80 12 34.0	307	308	Wqba-fm License Corp.										
296D	629280	APP_C	201.5	57.44		26 16 51.0	0.010	11.8	3.7	36.1	21.9							
Coral Springs	FL	21.4	BNPFT20030312AWQ		80 17 23.0	45	45	Calvary Chapel Church, Inc										
297D	W297AG	LIC_C	336.7	42.01		27 06 31.0	0.010	4.4	3.2	26.9	23.7							
Stuart	FL	156.6	BLFT20010509AAM		80 14 47.0	29	32	Central Educational Broadc										
296C2	WCKT	LIC_CX	254.2	177.00		26 19 00.0	23.500	129.1	51.8	31.7	72.8							
Lehigh Acres	FL	73.4	BLH20020806AAP		81 47 13.0	220	220	Clear Channel Broadcasting										
243C	WPOW«	LIC_DC	188.4	88.98		25 58 02.0	100.000	13.7	92.0	28.5R	60.5M							
Miami	FL	8.4	BLH20050301ACH		80 12 34.0	307	308	Wpow License Limited Partn										
296C3	WURN-FM	CP_CX	191.2	189.25		25 05 29.0	21.000	111.3	39.2	68.8	119.4							
Key Largo	FL	11.0	BMPH20120117AJJ		80 26 37.0	110	110	Actualidad 95.3fm Licensee										
One Step Application																		
294D	650200	APP_DC	342.0	92.75		27 33 18.0	0.130	0.0	1.6	82.1	90.7							
South Beach	FL	161.9	BNPFT20030317MEY		80 22 07.0	41	46	Ace Of Hearts Disc Jockey										
293D	631367	APP_C	341.7	101.06		27 37 28.0	0.250	1.1	7.1	89.3	93.5							
Vero Beach	FL	161.6	BNPFT20030311AFE		80 24 01.0	26	31	Oscar Aguero Ministry										
298D	DW298AL	LIC_C	341.0	114.55		27 44 07.0	0.099	0.7	6.4	103.2	107.6							
Wabasso	FL	160.8	BLFT20070220AAK		80 27 27.0	41	46	Ace Of Hearts Disc Jockey										

Terrain database is NED 03 SEC , R= 73.215 qualifying spacings or FCC minimum Spacings in KM, M= Margin in KM
 Contour distances are on direct line to and from reference station. Reference zone= East Zone, Co to 3rd adjacent.
 All separation margins (if shown) include rounding
 Ant Column: (D= DA Standard, Z= DA 73.215, N= Not DA 73.215, _= Omni), Polarization (C,H,V,E), Beamtilt(Y,N,X)
 ""affixed to 'IN' or 'OUT' values = site inside protected contour.
 « = Station meets FCC minimum distance spacing for its class.

Blue Highlighted Text denotes the W296AW - Mangonia Park, FL facility to be modified by this Form 349 filing. This facility need not be protected.

Yellow Highlighted Text denotes supplemental contour protection studies toward W295BJ - Jupiter, FL and APP296D - Delray Beach, FL (BNPFT-20030312AWK) as included in **Exhibit(s) 13.6** and **13.7**. A copy of the proposed Directional Antenna Pattern has been included in **Exhibit 13.8**.

Exhibit 13.6

Contour Protection Studies Toward W295BJ - Jupiter, FL

Black Media Works, Inc.

FMCommander Single Allocation Study - 03-01-2013 - NED 03 SEC
W296AW.P's Overlaps (In= 103.23 km, Out= 107.64 km)

W296AW.P CH 296 D DA
Lat= 26 45 42.0, Lng= 80 04 42.0
0.25 kW 156.3 M HAAT, 159 M COR
Prot.= 60 dBu, Intef.= 54 dBu

DW298AL CH 298 D BLFT20070220AAK
Lat= 27 44 07.0, Lng= 80 27 27.0
0.099 kW 41 M HAAT, 46 M COR
Prot.= 60 dBu, Intef.= 54 dBu

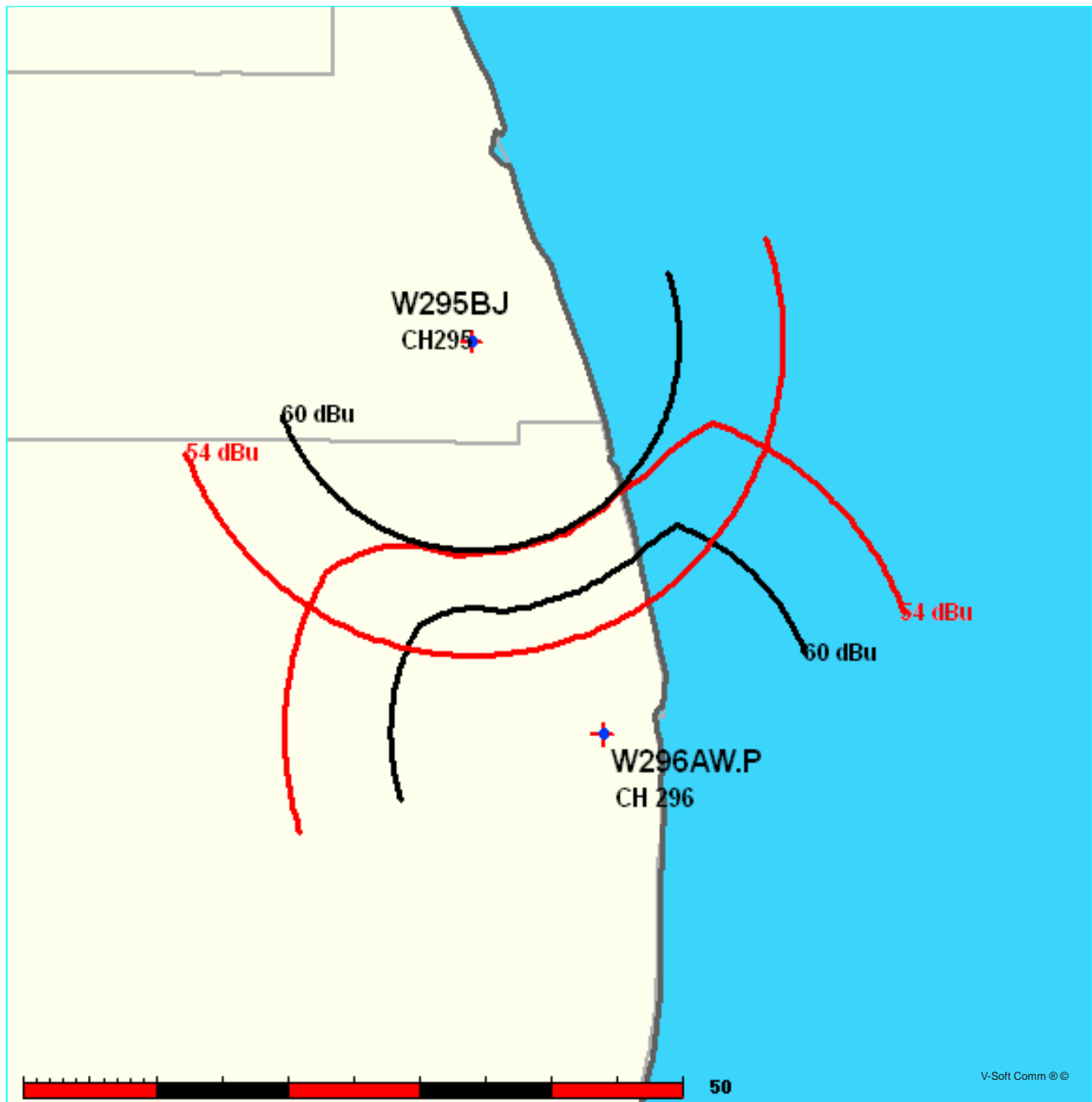


Exhibit 13.6

Contour Protection Studies Toward W295BJ - Jupiter, FL

03-01-2013

Terrain Data: NED 03 SEC

FMOver Analysis

W296AW.P

W295BJ BLFT20101115FKT

Channel = 296D
Max ERP = 0.25 kW
RCAMSL = 159 M
N. Lat. 26 45 42.0
W. Lng. 80 04 42.0
Protected
60 dBu

Channel = 295D
Max ERP = 0.19 kW
RCAMSL = 169 M
N. Lat. 27 01 31.0
W. Lng. 80 10 43.0
Interfering
54 dBu

Azimuth (degrees)	ERP (kW)	HAAT (m)	Dist (km)	Azimuth (degrees)	ERP (kW)	HAAT (m)	Dist (km)	Actual (dBu)	IX (km)
285.0	000.2500	0154.0	016.2	192.7	000.1900	0164.6	025.7	52.35	
286.0	000.2500	0154.0	016.2	192.6	000.1900	0164.6	025.5	52.55	
287.0	000.2500	0154.0	016.2	192.6	000.1900	0164.6	025.2	52.75	
288.0	000.2500	0154.1	016.2	192.5	000.1900	0164.6	024.9	52.94	
289.0	000.2500	0154.1	016.2	192.5	000.1900	0164.6	024.6	53.15	
290.0	000.2500	0154.1	016.2	192.4	000.1900	0164.6	024.3	53.35	
291.0	000.2500	0154.1	016.2	192.3	000.1900	0164.6	024.0	53.55	
292.0	000.2500	0154.1	016.2	192.2	000.1900	0164.6	023.8	53.75	
293.0	000.2500	0154.1	016.2	192.1	000.1900	0164.5	023.5	53.96	
294.0	000.2500	0154.1	016.2	191.9	000.1900	0164.5	023.2	54.16*	0.22
295.0	000.2500	0154.1	016.2	191.8	000.1900	0164.5	022.9	54.37*	0.50
296.0	000.2500	0154.1	016.2	191.6	000.1900	0164.5	022.7	54.58*	0.77
297.0	000.2500	0154.0	016.2	191.4	000.1900	0164.5	022.4	54.78*	1.04
298.0	000.2500	0154.0	016.2	191.2	000.1900	0164.5	022.1	54.99*	1.31
299.0	000.2500	0154.0	016.2	191.0	000.1900	0164.5	021.8	55.19*	1.58
300.0	000.2500	0154.0	016.2	190.7	000.1900	0164.6	021.6	55.40*	1.85
301.0	000.2401	0154.0	016.0	190.0	000.1900	0164.6	021.4	55.56*	2.05
302.0	000.2304	0153.9	015.8	189.3	000.1900	0164.6	021.2	55.70*	2.24
303.0	000.2209	0153.8	015.6	188.5	000.1900	0164.6	021.0	55.84*	2.42
304.0	000.2116	0153.7	015.4	187.7	000.1900	0164.6	020.9	55.97*	2.58
305.0	000.2025	0153.5	015.2	186.9	000.1900	0164.6	020.7	56.09*	2.74
306.0	000.1936	0153.6	015.0	186.1	000.1900	0164.6	020.6	56.20*	2.88
307.0	000.1849	0153.8	014.9	185.4	000.1900	0164.6	020.4	56.31*	3.02
308.0	000.1764	0154.0	014.7	184.6	000.1900	0164.6	020.3	56.41*	3.15
309.0	000.1681	0154.1	014.5	183.7	000.1900	0164.6	020.2	56.50*	3.26
310.0	000.1600	0154.2	014.3	182.9	000.1900	0164.7	020.1	56.58*	3.36
311.0	000.1494	0154.2	014.1	181.9	000.1900	0164.7	020.0	56.61*	3.40
312.0	000.1391	0154.3	013.8	180.9	000.1900	0164.7	020.0	56.64*	3.43
313.0	000.1292	0154.3	013.6	179.9	000.1900	0164.7	020.0	56.64*	3.44
314.0	000.1197	0154.3	013.3	179.0	000.1900	0164.9	020.0	56.65*	3.45
315.0	000.1106	0154.3	013.1	178.0	000.1900	0165.0	020.0	56.63*	3.43
316.0	000.1018	0154.3	012.8	177.0	000.1900	0165.1	020.1	56.60*	3.39
317.0	000.0933	0154.3	012.6	176.0	000.1900	0165.1	020.1	56.55*	3.33
318.0	000.0853	0154.3	012.3	175.1	000.1900	0165.0	020.2	56.49*	3.25

Exhibit 13.6

Contour Protection Studies Toward W295BJ - Jupiter, FL

Azimuth (degrees)	ERP (kW)	HAAT (m)	Dist (km)	Azimuth (degrees)	ERP (kW)	HAAT (m)	Dist (km)	Actual (dBu)	
319.0	000.0776	0154.3	012.0	174.1	000.1900	0165.1	020.3	56.41*	3.15
320.0	000.0702	0154.4	011.7	173.2	000.1900	0165.1	020.4	56.32*	3.04
321.0	000.0681	0154.4	011.6	172.6	000.1900	0165.2	020.4	56.36*	3.08
322.0	000.0660	0154.4	011.6	172.0	000.1900	0165.2	020.4	56.38*	3.12
323.0	000.0640	0154.5	011.5	171.4	000.1900	0165.3	020.3	56.41*	3.15
324.0	000.0620	0154.5	011.4	170.8	000.1900	0165.4	020.3	56.43*	3.17
325.0	000.0600	0154.6	011.3	170.2	000.1900	0165.4	020.3	56.43*	3.18
326.0	000.0581	0154.6	011.2	169.5	000.1900	0165.4	020.3	56.43*	3.18
327.0	000.0562	0154.6	011.1	168.9	000.1900	0165.4	020.3	56.43*	3.17
328.0	000.0543	0154.7	011.0	168.3	000.1900	0165.4	020.3	56.42*	3.16
329.0	000.0524	0154.7	010.9	167.7	000.1900	0165.4	020.4	56.40*	3.14
330.0	000.0506	0154.7	010.8	167.2	000.1900	0165.5	020.4	56.38*	3.12
331.0	000.0502	0154.8	010.8	166.6	000.1900	0165.5	020.4	56.41*	3.15
332.0	000.0497	0154.8	010.8	166.1	000.1900	0165.5	020.3	56.43*	3.18
333.0	000.0493	0154.8	010.8	165.6	000.1900	0165.5	020.3	56.45*	3.20
334.0	000.0488	0154.8	010.8	165.0	000.1900	0165.4	020.3	56.46*	3.21
335.0	000.0484	0154.8	010.7	164.5	000.1900	0165.3	020.3	56.46*	3.22
336.0	000.0480	0154.9	010.7	164.0	000.1900	0165.3	020.3	56.46*	3.22
337.0	000.0475	0154.9	010.7	163.4	000.1900	0165.3	020.3	56.46*	3.22
338.0	000.0471	0154.9	010.7	162.9	000.1900	0165.3	020.3	56.46*	3.21
339.0	000.0467	0154.9	010.6	162.4	000.1900	0165.3	020.3	56.46*	3.21
340.0	000.0462	0155.0	010.6	161.9	000.1900	0165.4	020.3	56.45*	3.20
341.0	000.0462	0155.1	010.6	161.3	000.1900	0165.4	020.3	56.46*	3.21
342.0	000.0462	0155.2	010.6	160.8	000.1900	0165.6	020.3	56.47*	3.22
343.0	000.0462	0155.3	010.6	160.3	000.1900	0165.6	020.3	56.47*	3.23
344.0	000.0462	0155.3	010.6	159.8	000.1900	0165.7	020.3	56.47*	3.22
345.0	000.0462	0155.3	010.6	159.3	000.1900	0165.8	020.3	56.46*	3.21
346.0	000.0462	0155.5	010.6	158.7	000.1900	0165.8	020.3	56.45*	3.21
347.0	000.0462	0155.7	010.6	158.2	000.1900	0165.9	020.3	56.44*	3.19
348.0	000.0462	0155.8	010.7	157.7	000.1900	0166.0	020.4	56.43*	3.18
349.0	000.0462	0155.9	010.7	157.2	000.1900	0166.1	020.4	56.40*	3.15
350.0	000.0462	0155.9	010.7	156.7	000.1900	0166.2	020.4	56.38*	3.12
351.0	000.0477	0155.8	010.7	156.1	000.1900	0166.3	020.4	56.41*	3.15
352.0	000.0493	0155.8	010.8	155.5	000.1900	0166.3	020.4	56.43*	3.18
353.0	000.0509	0155.5	010.9	155.0	000.1900	0166.3	020.4	56.44*	3.20
354.0	000.0524	0155.7	011.0	154.4	000.1900	0166.4	020.4	56.46*	3.22
355.0	000.0541	0155.7	011.1	153.8	000.1900	0166.5	020.3	56.48*	3.24
356.0	000.0557	0155.8	011.1	153.2	000.1900	0166.5	020.3	56.48*	3.25
357.0	000.0574	0155.6	011.2	152.6	000.1900	0166.6	020.3	56.48*	3.25
358.0	000.0590	0155.8	011.3	152.0	000.1900	0166.6	020.4	56.48*	3.24
359.0	000.0608	0156.2	011.4	151.4	000.1900	0166.7	020.4	56.48*	3.25
000.0	000.0625	0156.3	011.5	150.8	000.1900	0166.8	020.4	56.47*	3.23
001.0	000.0663	0156.4	011.6	150.1	000.1900	0167.0	020.3	56.52*	3.29
002.0	000.0702	0156.3	011.8	149.3	000.1900	0167.0	020.3	56.54*	3.32
003.0	000.0743	0156.3	012.0	148.6	000.1900	0167.3	020.3	56.57*	3.36
004.0	000.0784	0156.7	012.1	147.8	000.1900	0167.3	020.3	56.59*	3.38
005.0	000.0827	0156.9	012.3	147.1	000.1900	0167.3	020.3	56.59*	3.39

Exhibit 13.6

Contour Protection Studies Toward W295BJ - Jupiter, FL

Azimuth (degrees)	ERP (kW)	HAAT (m)	Dist (km)	Azimuth (degrees)	ERP (kW)	HAAT (m)	Dist (km)	Actual (dBu)
006.0	000.0870	0156.8	012.5	146.3	000.1900	0167.3	020.3	56.57* 3.37
007.0	000.0915	0156.9	012.6	145.6	000.1900	0167.4	020.3	56.56* 3.35
008.0	000.0961	0156.4	012.7	144.9	000.1900	0167.5	020.4	56.52* 3.31
009.0	000.1008	0156.5	012.9	144.1	000.1900	0167.8	020.4	56.51* 3.29
010.0	000.1056	0156.3	013.0	143.4	000.1900	0167.9	020.5	56.46* 3.22
011.0	000.1173	0156.2	013.4	142.3	000.1900	0168.3	020.4	56.53* 3.32
012.0	000.1296	0157.0	013.7	141.0	000.1900	0168.3	020.3	56.58* 3.38
013.0	000.1425	0157.5	014.1	139.8	000.1900	0168.1	020.3	56.58* 3.38
014.0	000.1560	0157.6	014.4	138.6	000.1900	0167.6	020.3	56.56* 3.35
015.0	000.1702	0157.7	014.8	137.5	000.1900	0167.1	020.4	56.51* 3.28
016.0	000.1849	0157.7	015.1	136.3	000.1900	0167.3	020.4	56.47* 3.24
017.0	000.2003	0157.8	015.4	135.1	000.1900	0167.3	020.5	56.42* 3.17
018.0	000.2162	0157.9	015.7	134.0	000.1900	0167.3	020.6	56.35* 3.08
019.0	000.2328	0157.9	016.1	132.8	000.1900	0167.4	020.7	56.27* 2.98
020.0	000.2500	0158.1	016.4	131.6	000.1900	0167.3	020.8	56.16* 2.84
021.0	000.2500	0158.2	016.4	131.3	000.1900	0167.2	021.1	55.95* 2.57
022.0	000.2500	0158.3	016.4	131.1	000.1900	0166.9	021.3	55.73* 2.28
023.0	000.2500	0158.3	016.4	130.8	000.1900	0166.8	021.6	55.51* 2.00
024.0	000.2500	0158.4	016.4	130.6	000.1900	0166.8	021.9	55.30* 1.73
025.0	000.2500	0158.4	016.4	130.4	000.1900	0166.7	022.2	55.09* 1.45
026.0	000.2500	0158.5	016.4	130.2	000.1900	0166.7	022.4	54.87* 1.17
027.0	000.2500	0158.5	016.4	130.0	000.1900	0166.7	022.7	54.66* 0.89
028.0	000.2500	0158.5	016.4	129.8	000.1900	0166.6	023.0	54.45* 0.61
029.0	000.2500	0158.6	016.4	129.7	000.1900	0166.7	023.3	54.24* 0.33
030.0	000.2500	0158.7	016.4	129.6	000.1900	0166.7	023.6	54.03* 0.05
031.0	000.2500	0158.7	016.5	129.5	000.1900	0166.7	023.8	53.83
032.0	000.2500	0158.7	016.5	129.4	000.1900	0166.7	024.1	53.62
033.0	000.2500	0158.7	016.5	129.3	000.1900	0166.7	024.4	53.41
034.0	000.2500	0158.7	016.5	129.2	000.1900	0166.7	024.7	53.21
035.0	000.2500	0158.7	016.5	129.2	000.1900	0166.7	025.0	53.00
036.0	000.2500	0158.7	016.5	129.1	000.1900	0166.7	025.3	52.80
037.0	000.2500	0158.8	016.5	129.1	000.1900	0166.7	025.5	52.60
038.0	000.2500	0158.7	016.5	129.1	000.1900	0166.7	025.8	52.40
039.0	000.2500	0158.8	016.5	129.0	000.1900	0166.7	026.1	52.20
040.0	000.2500	0158.8	016.5	129.1	000.1900	0166.7	026.4	52.01

Exhibit 13.6

Contour Protection Studies Toward W295BJ - Jupiter, FL

03-01-2013

Terrain Data: NED 03 SEC

FMOver Analysis

W295BJ BLFT20101115FKT

W296AW.P

Channel = 295D

Max ERP = 0.19 kW

RCAMSL = 169 M

N. Lat. 27 01 31.0

W. Lng. 80 10 43.0

Protected

60 dBu

Channel = 296D

Max ERP = 0.25 kW

RCAMSL = 159 M

N. Lat. 26 45 42.0

W. Lng. 80 04 42.0

Interfering

54 dBu

Azimuth (degrees)	ERP (kW)	HAAT (m)	Dist (km)	Azimuth (degrees)	ERP (kW)	HAAT (m)	Dist (km)	Actual (dBu)	IX (km)
101.0	000.1900	0167.4	015.7	011.7	000.1263	0156.7	026.9	49.35	
102.0	000.1900	0167.5	015.7	011.7	000.1263	0156.7	026.6	49.54	
103.0	000.1900	0167.5	015.7	011.7	000.1263	0156.7	026.3	49.72	
104.0	000.1900	0167.5	015.7	011.7	000.1260	0156.7	026.0	49.90	
105.0	000.1900	0167.5	015.7	011.7	000.1257	0156.6	025.8	50.08	
106.0	000.1900	0167.5	015.7	011.7	000.1253	0156.6	025.5	50.25	
107.0	000.1900	0167.6	015.7	011.6	000.1247	0156.6	025.2	50.42	
108.0	000.1900	0167.9	015.8	011.6	000.1243	0156.6	024.9	50.60	
109.0	000.1900	0167.8	015.7	011.5	000.1233	0156.5	024.7	50.75	
110.0	000.1900	0167.9	015.8	011.4	000.1223	0156.4	024.4	50.91	
111.0	000.1900	0167.8	015.7	011.3	000.1209	0156.4	024.1	51.06	
112.0	000.1900	0167.8	015.8	011.2	000.1195	0156.3	023.8	51.20	
113.0	000.1900	0167.7	015.7	011.0	000.1178	0156.3	023.6	51.33	
114.0	000.1900	0167.7	015.7	010.9	000.1161	0156.2	023.3	51.46	
115.0	000.1900	0167.8	015.7	010.7	000.1143	0156.1	023.0	51.59	
116.0	000.1900	0167.7	015.7	010.6	000.1122	0156.2	022.8	51.71	
117.0	000.1900	0167.5	015.7	010.3	000.1095	0156.2	022.5	51.81	
118.0	000.1900	0167.7	015.7	010.2	000.1075	0156.3	022.2	51.93	
119.0	000.1900	0167.6	015.7	009.9	000.1053	0156.3	022.0	52.04	
120.0	000.1900	0167.5	015.7	009.7	000.1040	0156.3	021.7	52.19	
121.0	000.1900	0167.5	015.7	009.4	000.1028	0156.5	021.5	52.34	
122.0	000.1900	0167.6	015.7	009.1	000.1015	0156.5	021.2	52.49	
123.0	000.1900	0167.5	015.7	008.8	000.1000	0156.5	021.0	52.62	
124.0	000.1900	0167.4	015.7	008.5	000.0985	0156.5	020.7	52.74	
125.0	000.1900	0166.8	015.7	008.1	000.0965	0156.4	020.5	52.84	
126.0	000.1900	0166.9	015.7	007.8	000.0950	0156.6	020.2	52.97	
127.0	000.1900	0167.1	015.7	007.4	000.0933	0156.8	020.0	53.10	
128.0	000.1900	0166.9	015.7	007.0	000.0914	0156.9	019.8	53.20	
129.0	000.1900	0166.7	015.7	006.5	000.0894	0156.8	019.5	53.28	
130.0	000.1900	0166.7	015.7	006.1	000.0874	0156.8	019.3	53.37	
131.0	000.1900	0166.9	015.7	005.7	000.0855	0156.7	019.1	53.45	
132.0	000.1900	0167.4	015.7	005.2	000.0836	0156.8	018.8	53.56	
133.0	000.1900	0167.4	015.7	004.7	000.0815	0156.9	018.6	53.63	

Exhibit 13.6

Contour Protection Studies Toward W295BJ - Jupiter, FL

Azimuth (degrees)	ERP (kW)	HAAT (m)	Dist (km)	Azimuth (degrees)	ERP (kW)	HAAT (m)	Dist (km)	Actual (dBu)
134.0	000.1900	0167.3	015.7	004.2	000.0791	0156.8	018.4	53.66
135.0	000.1900	0167.3	015.7	003.6	000.0768	0156.5	018.2	53.69
136.0	000.1900	0167.3	015.7	003.0	000.0744	0156.3	018.0	53.70
137.0	000.1900	0167.3	015.7	002.4	000.0719	0156.3	017.8	53.72
138.0	000.1900	0167.3	015.7	001.8	000.0694	0156.4	017.6	53.72
139.0	000.1900	0167.7	015.7	001.2	000.0671	0156.4	017.4	53.74
140.0	000.1900	0168.1	015.8	000.6	000.0646	0156.4	017.2	53.75
141.0	000.1900	0168.3	015.8	359.9	000.0623	0156.3	017.0	53.73
142.0	000.1900	0168.4	015.8	359.1	000.0610	0156.2	016.8	53.78
143.0	000.1900	0168.0	015.8	358.3	000.0596	0155.9	016.7	53.79
144.0	000.1900	0167.9	015.8	357.6	000.0583	0155.6	016.5	53.79
145.0	000.1900	0167.4	015.7	356.7	000.0569	0155.7	016.4	53.80
146.0	000.1900	0167.3	015.7	355.9	000.0555	0155.8	016.3	53.81
147.0	000.1900	0167.3	015.7	355.0	000.0541	0155.7	016.1	53.81
148.0	000.1900	0167.3	015.7	354.2	000.0527	0155.7	016.0	53.80
149.0	000.1900	0167.2	015.7	353.2	000.0512	0155.5	015.9	53.76
150.0	000.1900	0167.0	015.7	352.3	000.0498	0155.7	015.8	53.73
151.0	000.1900	0166.8	015.7	351.4	000.0483	0155.8	015.7	53.68
152.0	000.1900	0166.6	015.7	350.4	000.0469	0155.9	015.6	53.63
153.0	000.1900	0166.5	015.7	349.5	000.0462	0155.9	015.6	53.63
154.0	000.1900	0166.4	015.7	348.5	000.0462	0155.8	015.5	53.68
155.0	000.1900	0166.3	015.7	347.5	000.0462	0155.7	015.4	53.73
156.0	000.1900	0166.3	015.7	346.5	000.0462	0155.6	015.4	53.76
157.0	000.1900	0166.1	015.7	345.5	000.0462	0155.4	015.3	53.78
158.0	000.1900	0166.0	015.7	344.5	000.0462	0155.3	015.3	53.80
159.0	000.1900	0165.8	015.6	343.5	000.0462	0155.3	015.3	53.81
160.0	000.1900	0165.7	015.6	342.4	000.0462	0155.2	015.3	53.82
161.0	000.1900	0165.5	015.6	341.4	000.0462	0155.1	015.3	53.81
162.0	000.1900	0165.4	015.6	340.4	000.0462	0155.0	015.3	53.79
163.0	000.1900	0165.3	015.6	339.4	000.0465	0154.9	015.3	53.80
164.0	000.1900	0165.3	015.6	338.4	000.0469	0154.9	015.3	53.82
165.0	000.1900	0165.4	015.6	337.4	000.0474	0154.9	015.4	53.84
166.0	000.1900	0165.5	015.6	336.3	000.0478	0154.9	015.4	53.85
167.0	000.1900	0165.5	015.6	335.4	000.0482	0154.8	015.4	53.84
168.0	000.1900	0165.4	015.6	334.4	000.0487	0154.8	015.5	53.83
169.0	000.1900	0165.4	015.6	333.4	000.0491	0154.8	015.6	53.81
170.0	000.1900	0165.4	015.6	332.5	000.0495	0154.8	015.7	53.78
171.0	000.1900	0165.4	015.6	331.5	000.0499	0154.8	015.7	53.74
172.0	000.1900	0165.2	015.6	330.6	000.0504	0154.7	015.8	53.69
173.0	000.1900	0165.1	015.6	329.7	000.0512	0154.7	015.9	53.66
174.0	000.1900	0165.1	015.6	328.8	000.0528	0154.7	016.1	53.70
175.0	000.1900	0165.0	015.6	328.0	000.0544	0154.7	016.2	53.73
176.0	000.1900	0165.1	015.6	327.1	000.0560	0154.6	016.3	53.75
177.0	000.1900	0165.1	015.6	326.3	000.0575	0154.6	016.4	53.75
178.0	000.1900	0165.0	015.6	325.5	000.0591	0154.6	016.6	53.74
179.0	000.1900	0164.9	015.6	324.7	000.0606	0154.6	016.7	53.72
180.0	000.1900	0164.7	015.6	324.0	000.0620	0154.5	016.9	53.69
181.0	000.1900	0164.7	015.6	323.3	000.0635	0154.5	017.1	53.65

Exhibit 13.6

Contour Protection Studies Toward W295BJ - Jupiter, FL

Azimuth (degrees)	ERP (kW)	HAAT (m)	Dist (km)	Azimuth (degrees)	ERP (kW)	HAAT (m)	Dist (km)	Actual (dBu)
182.0	000.1900	0164.7	015.6	322.5	000.0649	0154.5	017.2	53.60
183.0	000.1900	0164.7	015.6	321.9	000.0663	0154.4	017.4	53.55
184.0	000.1900	0164.6	015.6	321.2	000.0677	0154.5	017.6	53.49
185.0	000.1900	0164.6	015.6	320.6	000.0690	0154.4	017.8	53.42
186.0	000.1900	0164.6	015.6	320.0	000.0705	0154.4	018.0	53.35
187.0	000.1900	0164.6	015.6	319.4	000.0747	0154.4	018.2	53.44
188.0	000.1900	0164.6	015.6	318.8	000.0789	0154.3	018.4	53.51
189.0	000.1900	0164.6	015.6	318.3	000.0830	0154.3	018.6	53.56
190.0	000.1900	0164.6	015.6	317.8	000.0871	0154.3	018.8	53.59
191.0	000.1900	0164.5	015.6	317.3	000.0910	0154.3	019.0	53.61
192.0	000.1900	0164.5	015.6	316.8	000.0949	0154.3	019.2	53.61
193.0	000.1900	0164.6	015.6	316.4	000.0987	0154.3	019.5	53.60
194.0	000.1900	0164.5	015.6	315.9	000.1023	0154.3	019.7	53.58
195.0	000.1900	0164.4	015.6	315.5	000.1057	0154.3	019.9	53.53
196.0	000.1900	0164.4	015.6	315.2	000.1090	0154.3	020.2	53.48
197.0	000.1900	0164.4	015.6	314.8	000.1123	0154.3	020.4	53.42
198.0	000.1900	0164.4	015.6	314.5	000.1155	0154.3	020.7	53.35
199.0	000.1900	0164.4	015.6	314.1	000.1184	0154.3	020.9	53.26
200.0	000.1900	0164.4	015.6	313.8	000.1213	0154.3	021.1	53.18
201.0	000.1900	0164.3	015.6	313.6	000.1238	0154.3	021.4	53.07
202.0	000.1900	0164.2	015.6	313.3	000.1263	0154.3	021.6	52.96
203.0	000.1900	0164.1	015.5	313.1	000.1286	0154.3	021.9	52.84
204.0	000.1900	0164.0	015.5	312.8	000.1307	0154.3	022.2	52.72
205.0	000.1900	0164.0	015.5	312.6	000.1327	0154.3	022.4	52.59
206.0	000.1900	0163.9	015.5	312.5	000.1346	0154.3	022.7	52.45
207.0	000.1900	0163.9	015.5	312.3	000.1364	0154.3	022.9	52.31
208.0	000.1900	0163.8	015.5	312.1	000.1380	0154.3	023.2	52.17
209.0	000.1900	0163.8	015.5	312.0	000.1395	0154.3	023.5	52.02
210.0	000.1900	0163.7	015.5	311.8	000.1409	0154.3	023.7	51.87
211.0	000.1900	0163.7	015.5	311.7	000.1421	0154.2	024.0	51.71
212.0	000.1900	0163.7	015.5	311.6	000.1431	0154.2	024.3	51.55
213.0	000.1900	0163.6	015.5	311.5	000.1441	0154.2	024.5	51.38
214.0	000.1900	0163.6	015.5	311.4	000.1450	0154.2	024.8	51.22
215.0	000.1900	0163.6	015.5	311.4	000.1457	0154.2	025.1	51.05
216.0	000.1900	0163.6	015.5	311.3	000.1462	0154.2	025.3	50.87
217.0	000.1900	0163.5	015.5	311.3	000.1466	0154.2	025.6	50.70
218.0	000.1900	0163.4	015.5	311.2	000.1469	0154.2	025.9	50.52
219.0	000.1900	0163.4	015.5	311.2	000.1472	0154.2	026.2	50.34
220.0	000.1900	0163.4	015.5	311.2	000.1473	0154.2	026.4	50.16

Exhibit 13.7

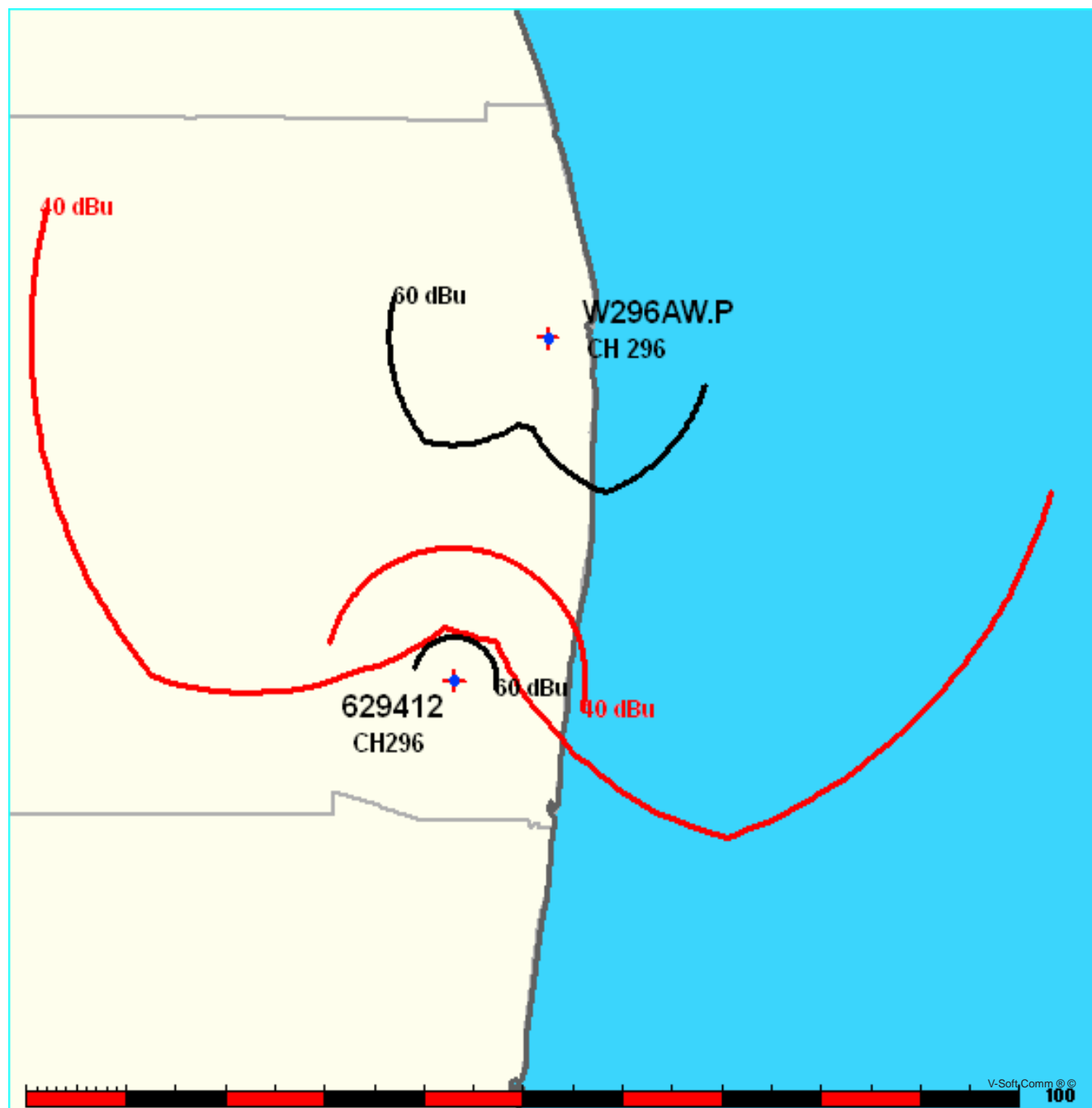
Contour Protection Studies Toward APP296D - Delray Beach, FL

Black Media Works, Inc.

FMCommander Single Allocation Study - 03-01-2013 - NED 03 SEC
W296AW.P's Overlaps (In= 13.11 km, Out= 0.55 km)

W296AW.P CH 296 D DA
Lat= 26 45 42.0, Lng= 80 04 42.0
0.25 kW 156.3 M HAAT, 159 M COR
Prot.= 60 dBu, Intef.= 40 dBu

629412 CH 296 D BNPFT20030312AWK
Lat= 26 27 23.0, Lng= 80 10 26.0
0.005 kW 75.7 M HAAT, 77 M COR
Prot.= 60 dBu, Intef.= 40 dBu



MUNN-REESE, INC.

Broadcast Engineering Consultants
COLDWATER, MI 49036

Exhibit 13.7

Contour Protection Studies Toward APP296D - Delray Beach, FL

03-01-2013

Terrain Data: NED 03 SEC

FMOver Analysis

W296AW.P

629412 BNPFT20030312AWK

Channel = 296D

Max ERP = 0.25 kW

RCAMSL = 159 M

N. Lat. 26 45 42.0

W. Lng. 80 04 42.0

Protected

60 dBu

Channel = 296D

Max ERP = 0.005 kW

RCAMSL = 77 M

N. Lat. 26 27 23.0

W. Lng. 80 10 26.0

Interfering

40 dBu

Azimuth (degrees)	ERP (kW)	HAAT (m)	Dist (km)	Azimuth (degrees)	ERP (kW)	HAAT (m)	Dist (km)	Actual (dBu)	IX (km)
153.0	000.2500	0157.6	016.4	041.2	000.0050	0072.0	025.7	29.11	
154.0	000.2500	0157.6	016.4	041.0	000.0050	0072.0	025.4	29.29	
155.0	000.2500	0157.5	016.4	040.7	000.0050	0072.0	025.1	29.47	
156.0	000.2500	0157.3	016.4	040.4	000.0050	0072.0	024.9	29.65	
157.0	000.2500	0157.2	016.4	040.1	000.0050	0071.9	024.6	29.83	
158.0	000.2500	0157.1	016.4	039.8	000.0050	0071.9	024.4	30.00	
159.0	000.2500	0157.0	016.3	039.5	000.0050	0071.9	024.1	30.18	
160.0	000.2500	0157.0	016.3	039.1	000.0050	0072.0	023.9	30.37	
161.0	000.2376	0156.9	016.1	038.3	000.0050	0072.1	023.8	30.47	
162.0	000.2256	0156.8	015.9	037.4	000.0050	0072.2	023.7	30.56	
163.0	000.2139	0156.6	015.6	036.5	000.0050	0072.2	023.6	30.61	
164.0	000.2025	0156.3	015.4	035.7	000.0050	0072.2	023.5	30.66	
165.0	000.1914	0156.3	015.1	034.8	000.0050	0072.3	023.5	30.72	
166.0	000.1806	0156.3	014.9	034.0	000.0050	0072.2	023.4	30.74	
167.0	000.1702	0155.9	014.7	033.1	000.0050	0072.2	023.4	30.76	
168.0	000.1600	0155.5	014.4	032.2	000.0050	0072.1	023.4	30.74	
169.0	000.1502	0155.2	014.2	031.4	000.0050	0072.0	023.4	30.73	
170.0	000.1406	0154.9	013.9	030.5	000.0050	0072.0	023.4	30.70	
171.0	000.1314	0154.5	013.7	029.7	000.0050	0071.9	023.5	30.66	
172.0	000.1225	0154.1	013.4	028.8	000.0050	0071.9	023.5	30.62	
173.0	000.1139	0154.2	013.2	028.1	000.0050	0071.8	023.6	30.57	
174.0	000.1056	0154.1	012.9	027.3	000.0050	0071.9	023.7	30.51	
175.0	000.0977	0154.3	012.7	026.5	000.0050	0071.9	023.8	30.46	
176.0	000.0900	0155.0	012.5	025.8	000.0050	0071.8	023.8	30.39	
177.0	000.0827	0155.2	012.2	025.0	000.0050	0071.7	023.9	30.31	
178.0	000.0756	0155.6	012.0	024.3	000.0050	0071.7	024.1	30.21	
179.0	000.0689	0155.5	011.7	023.6	000.0050	0071.6	024.2	30.08	
180.0	000.0625	0155.4	011.4	022.9	000.0050	0071.6	024.4	29.96	
181.0	000.0581	0155.4	011.2	022.3	000.0050	0071.5	024.5	29.87	
182.0	000.0538	0155.3	011.0	021.7	000.0050	0071.5	024.6	29.78	
183.0	000.0497	0155.2	010.8	021.1	000.0050	0071.5	024.8	29.68	
184.0	000.0458	0155.2	010.6	020.6	000.0050	0071.5	024.9	29.57	
185.0	000.0420	0155.3	010.4	020.0	000.0050	0071.5	025.1	29.46	
186.0	000.0384	0155.2	010.2	019.5	000.0050	0071.5	025.3	29.34	

Exhibit 13.7

Contour Protection Studies Toward APP296D - Delray Beach, FL

Azimuth (degrees)	ERP (kW)	HAAT (m)	Dist (km)	Azimuth (degrees)	ERP (kW)	HAAT (m)	Dist (km)	Actual (dBu)
187.0	000.0350	0155.2	009.9	019.0	000.0050	0071.5	025.4	29.20
188.0	000.0317	0155.1	009.7	018.5	000.0050	0071.5	025.6	29.06
189.0	000.0286	0155.0	009.4	018.1	000.0050	0071.5	025.9	28.91
190.0	000.0256	0154.9	009.2	017.6	000.0050	0071.5	026.1	28.76
191.0	000.0256	0154.9	009.2	017.3	000.0050	0071.5	026.1	28.77
192.0	000.0256	0154.9	009.2	016.9	000.0050	0071.5	026.1	28.78
193.0	000.0256	0154.9	009.2	016.6	000.0050	0071.5	026.1	28.79
194.0	000.0256	0154.8	009.2	016.2	000.0050	0071.5	026.0	28.79
195.0	000.0256	0154.8	009.2	015.9	000.0050	0071.5	026.0	28.79
196.0	000.0256	0154.7	009.2	015.5	000.0050	0071.5	026.0	28.79
197.0	000.0256	0154.7	009.2	015.2	000.0050	0071.5	026.1	28.79
198.0	000.0256	0154.6	009.2	014.8	000.0050	0071.5	026.1	28.78
199.0	000.0256	0154.5	009.2	014.5	000.0050	0071.5	026.1	28.77
200.0	000.0256	0154.5	009.2	014.1	000.0050	0071.5	026.1	28.76
201.0	000.0286	0154.5	009.4	013.7	000.0050	0071.5	025.9	28.92
202.0	000.0317	0154.5	009.7	013.3	000.0050	0071.5	025.6	29.08
203.0	000.0350	0154.4	009.9	012.8	000.0050	0071.5	025.4	29.22
204.0	000.0384	0154.4	010.1	012.3	000.0050	0071.6	025.2	29.35
205.0	000.0420	0154.4	010.4	011.8	000.0050	0071.6	025.1	29.48
206.0	000.0458	0154.4	010.6	011.3	000.0050	0071.6	024.9	29.60
207.0	000.0497	0154.4	010.8	010.7	000.0050	0071.6	024.7	29.71
208.0	000.0538	0154.3	011.0	010.2	000.0050	0071.6	024.6	29.81
209.0	000.0581	0154.3	011.2	009.6	000.0050	0071.6	024.5	29.91
210.0	000.0625	0154.3	011.4	009.0	000.0050	0071.5	024.3	29.99
211.0	000.0689	0154.2	011.7	008.3	000.0050	0071.5	024.2	30.12
212.0	000.0756	0154.2	011.9	007.6	000.0050	0071.5	024.0	30.23
213.0	000.0827	0154.2	012.2	006.9	000.0050	0071.5	023.9	30.34
214.0	000.0900	0154.2	012.4	006.2	000.0050	0071.5	023.7	30.44
215.0	000.0977	0154.2	012.7	005.4	000.0050	0071.5	023.6	30.52
216.0	000.1056	0154.2	012.9	004.7	000.0050	0071.5	023.5	30.59
217.0	000.1139	0154.2	013.2	003.9	000.0050	0071.5	023.4	30.65
218.0	000.1225	0154.2	013.4	003.1	000.0050	0071.5	023.4	30.70
219.0	000.1314	0154.1	013.6	002.3	000.0050	0071.5	023.3	30.74
220.0	000.1406	0154.1	013.9	001.5	000.0050	0071.5	023.3	30.77
221.0	000.1502	0154.1	014.1	000.7	000.0050	0071.5	023.3	30.78
222.0	000.1600	0154.1	014.3	359.8	000.0050	0071.6	023.3	30.80
223.0	000.1702	0154.1	014.6	359.0	000.0050	0071.7	023.3	30.80
224.0	000.1806	0154.1	014.8	358.2	000.0050	0071.7	023.3	30.79
225.0	000.1914	0154.1	015.0	357.3	000.0050	0071.7	023.3	30.76
226.0	000.2025	0154.1	015.2	356.5	000.0050	0071.7	023.4	30.73
227.0	000.2139	0154.0	015.5	355.6	000.0050	0071.7	023.4	30.68
228.0	000.2256	0154.1	015.7	354.8	000.0050	0071.7	023.5	30.63
229.0	000.2377	0154.1	015.9	353.9	000.0050	0071.7	023.6	30.56
230.0	000.2500	0154.1	016.2	353.1	000.0050	0071.7	023.7	30.49
231.0	000.2500	0154.1	016.2	352.7	000.0050	0071.7	023.9	30.31
232.0	000.2500	0154.1	016.2	352.4	000.0050	0071.8	024.2	30.14
233.0	000.2500	0154.1	016.2	352.1	000.0050	0071.8	024.4	29.96

Exhibit 13.7

Contour Protection Studies Toward APP296D - Delray Beach, FL

03-01-2013

Terrain Data: NED 03 SEC

FMOver Analysis

629412 BNPFT20030312AWK

W296AW.P

Channel = 296D
Max ERP = 0.005 kW
RCAMSL = 77 M
N. Lat. 26 27 23.0
W. Lng. 80 10 26.0
Protected
60 dBu

Channel = 296D
Max ERP = 0.25 kW
RCAMSL = 159 M
N. Lat. 26 45 42.0
W. Lng. 80 04 42.0
Interfering
40 dBu

Azimuth (degrees)	ERP (kW)	HAAT (m)	Dist (km)	Azimuth (degrees)	ERP (kW)	HAAT (m)	Dist (km)	Actual (dBu)	IX (km)
331.0	000.0050	0072.0	004.1	200.8	000.0279	0154.5	032.4	39.36	
332.0	000.0050	0072.0	004.1	200.7	000.0277	0154.5	032.4	39.35	
333.0	000.0050	0072.0	004.1	200.6	000.0274	0154.5	032.3	39.34	
334.0	000.0050	0071.9	004.1	200.5	000.0272	0154.5	032.3	39.32	
335.0	000.0050	0071.9	004.1	200.4	000.0269	0154.5	032.2	39.30	
336.0	000.0050	0071.8	004.1	200.4	000.0266	0154.5	032.2	39.29	
337.0	000.0050	0071.8	004.1	200.3	000.0263	0154.5	032.1	39.27	
338.0	000.0050	0071.8	004.1	200.2	000.0261	0154.5	032.1	39.25	
339.0	000.0050	0071.8	004.1	200.1	000.0258	0154.5	032.0	39.23	
340.0	000.0050	0071.8	004.1	200.0	000.0256	0154.5	032.0	39.22	
341.0	000.0050	0071.8	004.1	199.9	000.0256	0154.5	031.9	39.24	
342.0	000.0050	0071.8	004.1	199.8	000.0256	0154.5	031.9	39.27	
343.0	000.0050	0071.8	004.1	199.7	000.0256	0154.5	031.8	39.29	
344.0	000.0050	0071.8	004.1	199.6	000.0256	0154.5	031.8	39.31	
345.0	000.0050	0071.8	004.1	199.5	000.0256	0154.5	031.8	39.33	
346.0	000.0050	0071.7	004.1	199.3	000.0256	0154.5	031.7	39.36	
347.0	000.0050	0071.7	004.1	199.2	000.0256	0154.5	031.7	39.38	
348.0	000.0050	0071.8	004.1	199.1	000.0256	0154.5	031.6	39.40	
349.0	000.0050	0071.8	004.1	199.0	000.0256	0154.5	031.6	39.42	
350.0	000.0050	0071.9	004.1	198.9	000.0256	0154.5	031.6	39.44	
351.0	000.0050	0071.8	004.1	198.8	000.0256	0154.5	031.5	39.46	
352.0	000.0050	0071.8	004.1	198.7	000.0256	0154.5	031.5	39.47	
353.0	000.0050	0071.7	004.1	198.5	000.0256	0154.5	031.5	39.49	
354.0	000.0050	0071.7	004.1	198.4	000.0256	0154.5	031.4	39.51	
355.0	000.0050	0071.7	004.1	198.3	000.0256	0154.6	031.4	39.52	
356.0	000.0050	0071.7	004.1	198.2	000.0256	0154.6	031.4	39.54	
357.0	000.0050	0071.7	004.1	198.1	000.0256	0154.6	031.4	39.56	
358.0	000.0050	0071.7	004.1	197.9	000.0256	0154.6	031.3	39.57	
359.0	000.0050	0071.7	004.1	197.8	000.0256	0154.6	031.3	39.58	
000.0	000.0050	0071.3	004.1	197.7	000.0256	0154.6	031.3	39.59	
001.0	000.0050	0071.5	004.1	197.6	000.0256	0154.6	031.3	39.61	
002.0	000.0050	0071.5	004.1	197.4	000.0256	0154.6	031.2	39.62	
003.0	000.0050	0071.5	004.1	197.3	000.0256	0154.6	031.2	39.63	

Exhibit 13.7

Contour Protection Studies Toward APP296D - Delray Beach, FL

Azimuth (degrees)	ERP (kW)	HAAT (m)	Dist (km)	Azimuth (degrees)	ERP (kW)	HAAT (m)	Dist (km)	Actual (dBu)
004.0	000.0050	0071.5	004.1	197.2	000.0256	0154.6	031.2	39.64
005.0	000.0050	0071.5	004.1	197.1	000.0256	0154.7	031.2	39.65
006.0	000.0050	0071.5	004.1	196.9	000.0256	0154.7	031.2	39.66
007.0	000.0050	0071.5	004.1	196.8	000.0256	0154.7	031.2	39.66
008.0	000.0050	0071.5	004.1	196.7	000.0256	0154.7	031.2	39.67
009.0	000.0050	0071.5	004.1	196.5	000.0256	0154.7	031.1	39.68
010.0	000.0050	0071.6	004.1	196.4	000.0256	0154.7	031.1	39.68
011.0	000.0050	0071.6	004.1	196.3	000.0256	0154.7	031.1	39.69
012.0	000.0050	0071.6	004.1	196.1	000.0256	0154.7	031.1	39.69
013.0	000.0050	0071.5	004.1	196.0	000.0256	0154.7	031.1	39.69
014.0	000.0050	0071.5	004.1	195.9	000.0256	0154.7	031.1	39.69
015.0	000.0050	0071.5	004.1	195.7	000.0256	0154.7	031.1	39.70
016.0	000.0050	0071.5	004.1	195.6	000.0256	0154.7	031.1	39.70
017.0	000.0050	0071.5	004.1	195.5	000.0256	0154.8	031.1	39.70
018.0	000.0050	0071.5	004.1	195.3	000.0256	0154.8	031.1	39.69
019.0	000.0050	0071.5	004.1	195.2	000.0256	0154.8	031.1	39.69
020.0	000.0050	0071.5	004.1	195.1	000.0256	0154.8	031.1	39.69
021.0	000.0050	0071.5	004.1	195.0	000.0256	0154.8	031.1	39.69
022.0	000.0050	0071.5	004.1	194.8	000.0256	0154.8	031.1	39.68
023.0	000.0050	0071.6	004.1	194.7	000.0256	0154.8	031.2	39.68
024.0	000.0050	0071.6	004.1	194.6	000.0256	0154.8	031.2	39.67
025.0	000.0050	0071.7	004.1	194.4	000.0256	0154.8	031.2	39.67
026.0	000.0050	0071.8	004.1	194.3	000.0256	0154.8	031.2	39.66
027.0	000.0050	0071.9	004.1	194.2	000.0256	0154.8	031.2	39.65
028.0	000.0050	0071.8	004.1	194.0	000.0256	0154.8	031.2	39.64
029.0	000.0050	0071.9	004.1	193.9	000.0256	0154.8	031.2	39.64
030.0	000.0050	0072.0	004.1	193.8	000.0256	0154.8	031.3	39.63
031.0	000.0050	0072.0	004.1	193.7	000.0256	0154.8	031.3	39.62
032.0	000.0050	0072.1	004.1	193.5	000.0256	0154.8	031.3	39.60
033.0	000.0050	0072.2	004.1	193.4	000.0256	0154.8	031.3	39.59
034.0	000.0050	0072.2	004.1	193.3	000.0256	0154.8	031.3	39.58
035.0	000.0050	0072.3	004.1	193.2	000.0256	0154.8	031.4	39.57
036.0	000.0050	0072.2	004.1	193.0	000.0256	0154.9	031.4	39.55
037.0	000.0050	0072.3	004.1	192.9	000.0256	0154.9	031.4	39.54
038.0	000.0050	0072.2	004.1	192.8	000.0256	0154.9	031.5	39.52
039.0	000.0050	0072.0	004.1	192.7	000.0256	0154.9	031.5	39.50
040.0	000.0050	0071.9	004.1	192.6	000.0256	0154.9	031.5	39.48
041.0	000.0050	0072.0	004.1	192.4	000.0256	0154.9	031.6	39.46
042.0	000.0050	0071.9	004.1	192.3	000.0256	0154.9	031.6	39.44
043.0	000.0050	0071.9	004.1	192.2	000.0256	0154.9	031.6	39.42
044.0	000.0050	0071.8	004.1	192.1	000.0256	0154.9	031.7	39.40
045.0	000.0050	0072.0	004.1	192.0	000.0256	0154.9	031.7	39.38
046.0	000.0050	0072.0	004.1	191.9	000.0256	0154.9	031.7	39.36
047.0	000.0050	0072.0	004.1	191.8	000.0256	0154.9	031.8	39.34
048.0	000.0050	0072.2	004.1	191.7	000.0256	0154.9	031.8	39.32
049.0	000.0050	0072.5	004.1	191.6	000.0256	0154.9	031.9	39.30
050.0	000.0050	0072.6	004.1	191.5	000.0256	0154.9	031.9	39.28

Exhibit 13.8

Proposed Directional Antenna Information

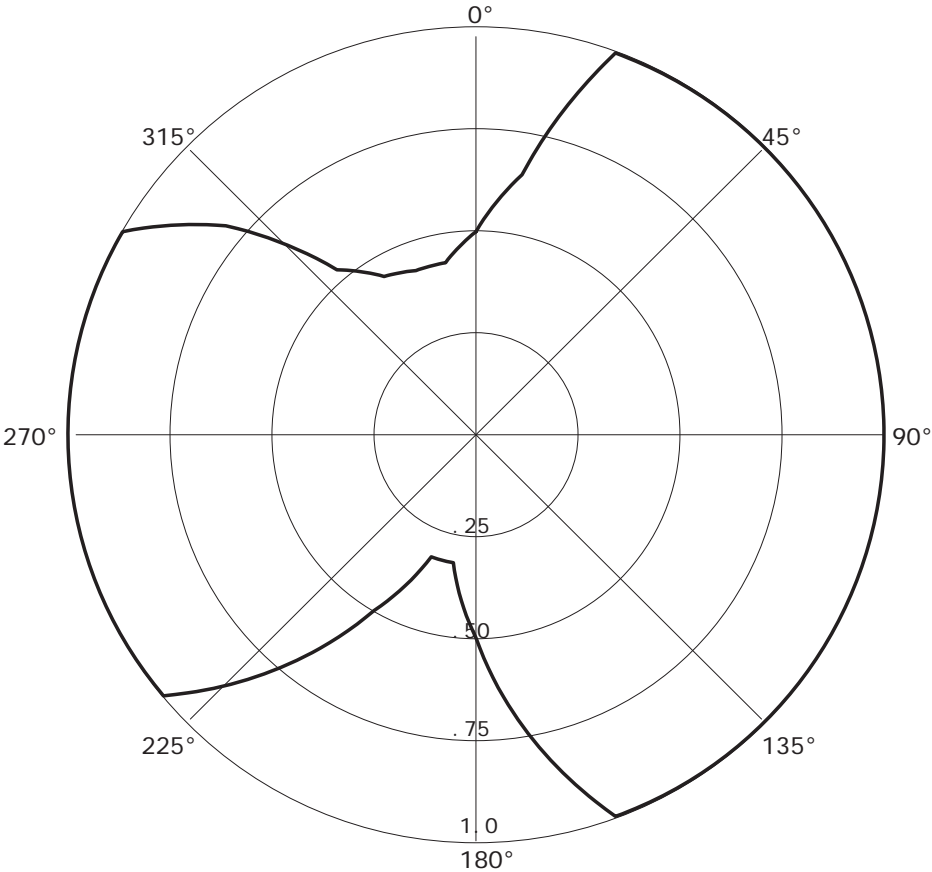
W296AW. P

03-01-2013

RMS(V)= .864

Graph i s Relative Fi el d

Azi	Fi el d	dBk	kW
000	0. 500	-12. 041	0. 063
010	0. 650	-09. 762	0. 106
020	1. 000	-06. 021	0. 250
030	1. 000	-06. 021	0. 250
040	1. 000	-06. 021	0. 250
050	1. 000	-06. 021	0. 250
060	1. 000	-06. 021	0. 250
070	1. 000	-06. 021	0. 250
080	1. 000	-06. 021	0. 250
090	1. 000	-06. 021	0. 250
100	1. 000	-06. 021	0. 250
110	1. 000	-06. 021	0. 250
120	1. 000	-06. 021	0. 250
130	1. 000	-06. 021	0. 250
140	1. 000	-06. 021	0. 250
150	1. 000	-06. 021	0. 250
160	1. 000	-06. 021	0. 250
170	0. 750	-08. 519	0. 141
180	0. 500	-12. 041	0. 063
190	0. 320	-15. 918	0. 026
200	0. 320	-15. 918	0. 026
210	0. 500	-12. 041	0. 063
220	0. 750	-08. 519	0. 141
230	1. 000	-06. 021	0. 250
240	1. 000	-06. 021	0. 250
250	1. 000	-06. 021	0. 250
260	1. 000	-06. 021	0. 250
270	1. 000	-06. 021	0. 250
280	1. 000	-06. 021	0. 250
290	1. 000	-06. 021	0. 250
300	1. 000	-06. 021	0. 250
310	0. 800	-07. 959	0. 160
320	0. 530	-11. 535	0. 070
330	0. 450	-12. 956	0. 051
340	0. 430	-13. 351	0. 046
350	0. 430	-13. 351	0. 046



The antenna proposed in this application will be mounted in accordance with specific instructions provided by the antenna manufacturer. The antenna will be tested by the manufacturer using the type of mounting which will be employed in the field.

The directional antenna will be mounted on the tower which is of uniform cross section. No other antennas of any type are or will be mounted on the same tower level as the directional antenna.

No antenna is or will be mounted within any vertical or horizontal distance specified by the antenna manufacturer as being necessary for proper operation of the directional antenna. The antenna will be assembled under the supervision of a qualified engineer, who will provide the required certification. This statement will certify that the antenna has been installed pursuant to the manufacturer's instructions. Also upon completion of antenna construction, a statement from a licensed surveyor will be submitted with the application for license certifying the antenna has been installed in the proper orientation.

The directional antenna pattern will be produced by means of parasitic elements and/or reflective panels adjusted to produce the required pattern.

The antenna pattern will be measured by the manufacturer on the test range, and the measurement results will be supplied to the Commission at the time Form 350-FM is filed covering the construction.