

Allocation Study**1. Compliance with 47 C.F.R. 73.207**

Considering the contingently filed applications for WGCQ and KKLTV, the proposed facility meets all minimum distance separation requirements with regard to co-channel, first, second, or third adjacent channel stations, and those separated by 53/54 channels, except the facilities listed below:

Call Sign	Channel	City	State	FIN	Short Space Dist.
WOJG	234A	Bolivar	TN	31865	7.9 km
KHLR	235C	Maumelle	AR	61366	1.2 km

This application proposes contour protection for WOJG and KHLR according to the guidelines of 47 C.F.R. 73.215. At 47 C.F.R. 73.215(e) the rules state that there are minimum separation requirements that must be met. The proposed WKVF will be a class C3 facility. The table below illustrates that the proposed facility meets the minimum requirements:

Call	Class Relation	Channel Relation	Distance (km)	Dist. Required (km)
WOJG	A to C3	200 kHz	81.1	72
KHLR	C to C3	Co-channel	235.8	226

Therefore, the proposed facility is permitted to use contour protection toward the short-space facilities (See Exhibit 30 for compliance with contour protection requirements).

2. Fully Spaced Theoretical Site

A theoretical allotment site has been identified. It is located at 35° 22' 51" N by 89° 53' 38"W and is, in fact, fully spaced.

Exhibit Index:

- Exhibit 26-A shows the spacing at the proposed site.
- Exhibit 26-B demonstrates that the theoretical allotment site meets the minimum distance separation requirements of 47 C.F.R. 73.207.
- Exhibit 26-C is a topographical map that shows the location of the theoretical allotment site.
- Exhibit 26-D shows the city of license coverage map for the allotment site.
- Exhibit 30 shows the protected and interfering contours, in all directions, for the proposed operation.
- Exhibit 30-A Protected and interfering contours, over pertinent arcs, of WOJG.
*Note: WOJG contours are calculated as 6 kw at 100m HAAT
- Exhibit 30-B Protected and interfering contours, over pertinent arcs, of KHLR.
*Note: KHLR contours are calculated as 100 kw at 600m HAAT

Educational Media Foundation

5700 West Oaks Boulevard ♦ Rocklin ♦ California ♦ 95765

Exhibit 26-A

Bartlett, TN

Proposed Site Spacing

REFERENCE		DISPLAY DATES
35 12 41.0 N.	CLASS = C3	DATA 03-13-09
89 48 54.0 W.	Current Spacings to 3rd Adj.	SEARCH 03-16-09
----- Channel 235 - 94.9 MHz -----		

Call	Channel	Location		Azi	Dist	FCC	Margin

*WGCQ	LIC-Z	235A	Ripley	TN	24.7	73.6	142.0 -68.4
*KKLV	LIC	234A	Turrell	AR	282.3	47.6	89.0 -41.4
WOJG	LIC	234A	Bolivar	TN	84.5	81.1	89.0 -7.9
KHLR	LIC	235C	Maumelle	AR	249.4	235.8	237.0 -1.2
WVIM-FM	LIC-N	237A	Coldwater	MS	200.2	47.9	42.0 5.9
*KKLV.P	PRO	234A	Weiner	AR	296.2	108.8	89.0 19.8
WTBG	LIC-N	237A	Brownsville	TN	49.4	68.0	42.0 26.0
WMSR-FM	LIC-Z	235C3	Collinwood	TN	95.7	186.1	153.0 33.1
WCDZ	LIC-N	236C3	Dresden	TN	41.2	156.2	99.0 57.3
KJIW-FM	LIC-N	233C3	Helena	AR	223.2	104.5	43.0 61.5
WKOR-FM	LIC	235C2	Columbus	MS	143.3	239.0	177.0 62.0
WOXD	LIC	238A	Oxford	MS	165.2	104.3	42.0 62.3
KAMS	LIC	236C1	Mammoth Spring	AR	316.1	207.9	144.0 63.9
*WGCQ.P	PRO	254A	Hayti	MO	9.4	105.5	xx.x xx.x

*NOTE: This application is being filed contingently with an application for KKLTV, Turrell (to be Weiner), AR and WGCQ, Hayti, MO according to the guidelines of 47 C.F.R. 73.3517(e). The proposed contingent facilities are marked with a "P" following the call sign.

Educational Media Foundation

5700 West Oaks Boulevard ♦ Rocklin ♦ California ♦ 95765

Exhibit 26-B

Bartlett, TN

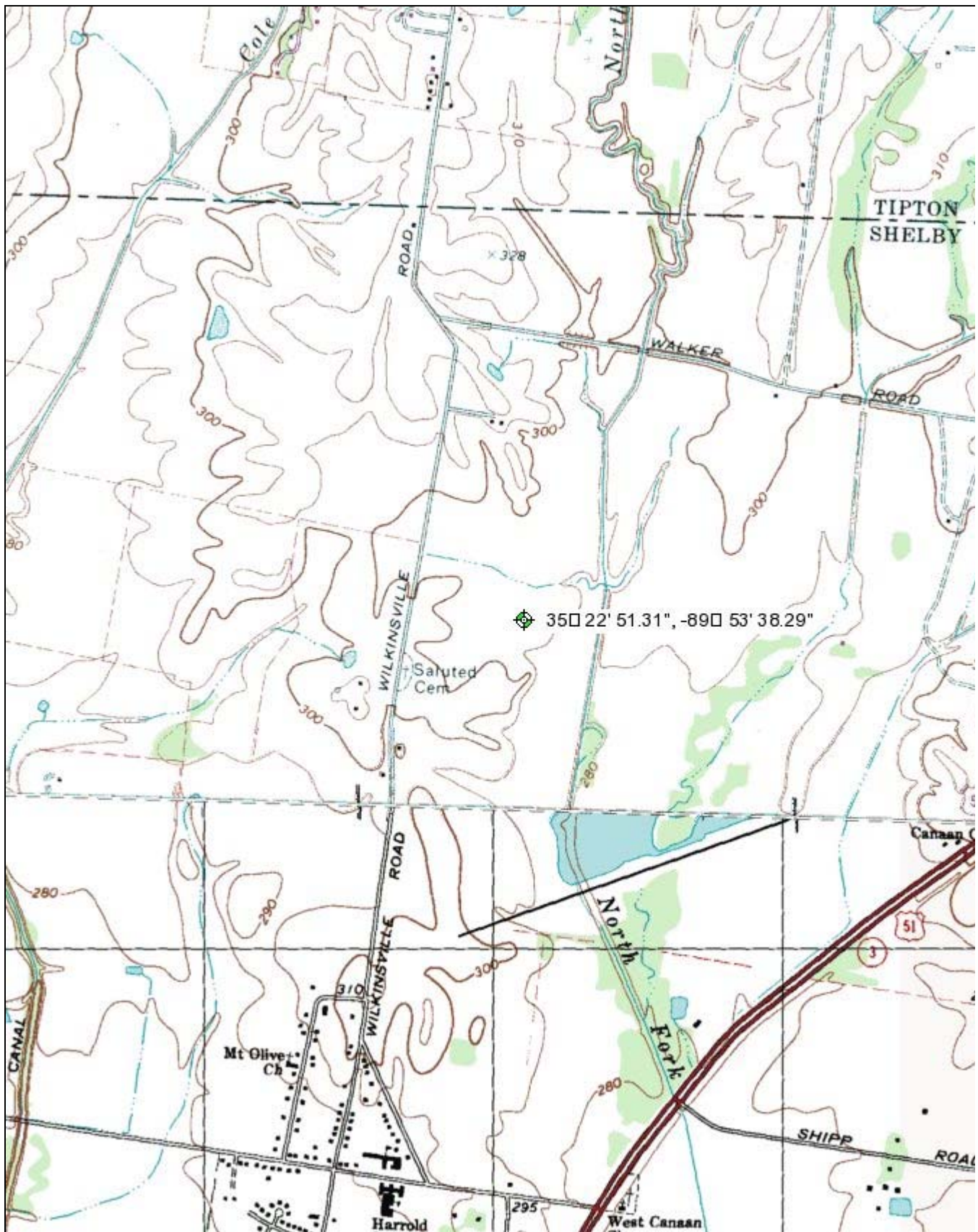
Allotment Site

REFERENCE		DISPLAY DATES
35 22 51.0 N.	CLASS = C3	DATA 03-13-09
89 53 38.0 W.	Current Spacings to 3rd Adj.	SEARCH 03-16-09
----- Channel 235 - 94.9 MHz -----		

Call	Channel	Location		Azi	Dist	FCC	Margin
*WGCQ	LIC-Z 235A	Ripley	TN	38.2	61.2	142.0	-80.8
*KKLV	CP -Z 234A	Turrell	AR	284.1	40.1	89.0	-48.9
*KKLV	LIC 234A	Turrell	AR	257.4	40.3	89.0	-48.7
*WGCQ	CP -N 235A	Hayti	MO	9.4	105.5	142.0	-36.5
KHLR	LIC 235C	Maumelle	AR	244.4	236.5	237.0	-0.48
WOJG	LIC 234A	Bolivar	TN	97.2	88.6	89.0	-0.44
*KKLV.P	PRO 234A	Weiner	AR	287.8	95.1	89.0	6.1
WTBG	LIC-N 237A	Brownsville	TN	66.5	64.1	42.0	22.1
WVIM-FM	LIC-N 237A	Coldwater	MS	188.3	64.4	42.0	22.4
WMSR-FM	LIC-Z 235C3	Collinwood	TN	100.9	195.9	153.0	42.9
KAMS	LIC 236C1	Mammoth Spring	AR	313.6	189.6	144.0	45.6
WCDZ	LIC-N 236C3	Dresden	TN	48.0	147.9	99.0	48.9
WTJJ	LIC 232A	Dyer	TN	40.4	105.9	42.0	63.9
*WGCQ.P	PRO 254A	Hayti	MO	9.4	105.5	xx.x	xx.x

*NOTE: This application is being filed contingently with an application for KKLTV, Turrell (to be Weiner), AR and WGCQ, Hayti, MO according to the guidelines of 47 C.F.R. 73.3517(e). The proposed contingent facilities are marked with a "P" following the call sign.

Exhibit 26-C



0 0.5 Mi

Exhibit 26-D

WKVF.theo

Latitude: 35-22-51 N
Longitude: 089-53-38 W
ERP: 25.00 kW
Channel: 235
Frequency: 94.9 MHz
AMSL Height: 192.7 m
Horiz. Pattern: Omni

