

Exhibit 15.1

Tabulation of Proposed Allocation

Tabulations of contours will be supplied upon request.

Bible Broadcasting Network, I

REFERENCE		CH# 206C1 - 89.1 MHz, Pwr= 100 kw, HAAT=147.6 M, COR= 282 M							DISPLAY DATES	
32 00 12 N.		Average Protected F(50-50)= 58.15 km							DATA 11-05-05	
95 43 06 W.		Ave. F(50-10) 40 dBu= 154.5 54 dBu= 87.7 80 dBu= 23.7 100 dBu= 7.0							SEARCH 11-14-05	
CH	CALL	TYPE	AZI.	DIST	LAT.	Pwr(kw)	COR(M)	PRO(km)	*IN*	*OUT*
CITY	STATE		<--	FILE #	LNG.	HAAT(M)	INT(km)	LICENSEE	(Overlap in km)	
206C2 KYFP Palestine	LIC DC TX		0.0 180.0	0.03 BLED20000605AOF	32 00 13 95 43 06	25.000 112	262 115.7	40.9 Bible Broadcasting Network	-172.47*<	-193.66*<
205C1 KLDN Lufkin	LIC DCN TX		126.0 306.5	111.95 BLED19910418KA	31 24 28 94 45 53	21.605 185	282 71.7	48.6 Bd Supervisors, Louisiana	0.49	3.49
207C1 KNON Dallas	LIC DCN TX		299.3 118.6	134.86 BLED19900309KA	32 35 24 96 58 21	55.000 243	449 91.0	61.9 Agape Broadcasting Foundat	1.90	10.99
206C2 KOUZ.C Blanchard	CP DVX LA		77.9 258.8	167.78 BPED19961112MC	32 18 28 93 58 34	18.014 116	208 108.9	38.9 Family Life Educational Fo	13.00	5.29
205C1 KETR Commerce	LIC CN TX		352.1 172.0	138.28 BLED19830608AD	33 14 17 95 55 27	100.000 104	276 81.0	51.7 Texas A&M University-comm	1.13	1.91
204C1 KTPB Kilgore From channel 204C3	LIC DEN TX		59.5 239.8	73.54 BLED19970326KA	32 20 14 95 02 41	79.000 171	302 7.2	58.8 Kilgore Junior College	12.58	8.43
208C1 KVNE Tyler	LIC CY TX		38.0 218.3	75.66 BLED19950315KA	32 32 21 95 13 16	96.000 248	397 9.1	67.7 Educational Radio Foundati	10.11	1.25
206A KEOS College Station	LIC VX TX		203.1 22.8	163.26 BMLD20050330AYO	30 38 54 96 23 23	1.000 64	164 52.1	14.6 Brazos Educational Radio	54.56	1.43
205C2 KSUR.C Mart	CP VN TX		239.7 59.0	143.46 BPED19960924MF	31 20 44 97 01 16	50.000 147	271 77.6	51.7 American Family Associatio	6.08	2.21
259A RADD Cuney New Allotment; Site Restriction: 6.8 km Southeast.	ADD TX		94.3 274.4	32.70	31 58 52 95 22 24	6.000 120	238 33.5	30.7 Charles Crawford	15.0R	17.7M
203A KCKT Crockett	LIC CX TX		162.8 343.0	78.50 BLED20030219ADO	31 19 37 95 28 26	0.250 47	145 1.1	8.9 American Family Associatio	29.99	64.30
203C1 KEOM Mesquite	LIC DCX TX		314.7 134.2	120.51 BMLD20041112AAD	32 45 46 96 38 04	61.000 186	315 7.0	57.9 Mesquite Independent Schoo	67.38	57.69
207C1 KSBj Humble	LIC CN TX		163.2 343.5	207.93 BLED19871023KE	30 12 26 95 05 28	100.000 250	286 100.2	68.3 Ksbj Educational Foundatio	60.19	67.03
260A KMOOFM Mineola	LIC C TX		10.4 190.5	84.33 BLH19990513KE	32 45 04 95 33 18	6.000 102	214 30.7	28.5 Hightower Radio, Inc.	15.0R	69.3M
06Z2C KTALTV Texarkana	LI HN TX		57.6 238.5	189.40 BLCT1135	32 54 12 94 00 23	100.000 481	552 54.8	118.7 Nexstar Broadcasting, Inc.	211.0R	-21.6M
06-3C KFDMTV Beaumont	LI HN TX		140.9 321.8	265.02 BLCT2049	30 08 24 93 58 44	100.000 293	298 37.7	103.0 Freedom Broadcasting Of Te	211.0R	54.0M
06+2C KCENTV Temple	LI HY TX		240.7 59.9	163.89 BLCT19811231KH	31 16 24 97 13 14	100.000 623	756 61.2	129.6 Channel 6, Inc.	211.0R	-47.1M
06-2C KAUZTV Wichita Falls	LI HN TX		309.5 127.9	337.44 BLCT1576	33 54 04 98 32 21	100.000 317	612 41.8	104.9 Hoak Media Of wichita Fall	211.0R	126.4M

ERP and HAAT are on direct line to and from reference station.

* affixed to TV6 Margin= no direct-line contour overlap.

**affixed to 'IN' or 'Out' values = site inside protected contour. "<" = contour overlap

Highlighted Stations indicate Contour Protection Maps included in **Exhibit 15.2.**

Munn-Reese, Inc.

Broadcast Engineering Consultants

Coldwater, MI 49036

Exhibit 15.2

Contour Protections Towards Select Stations

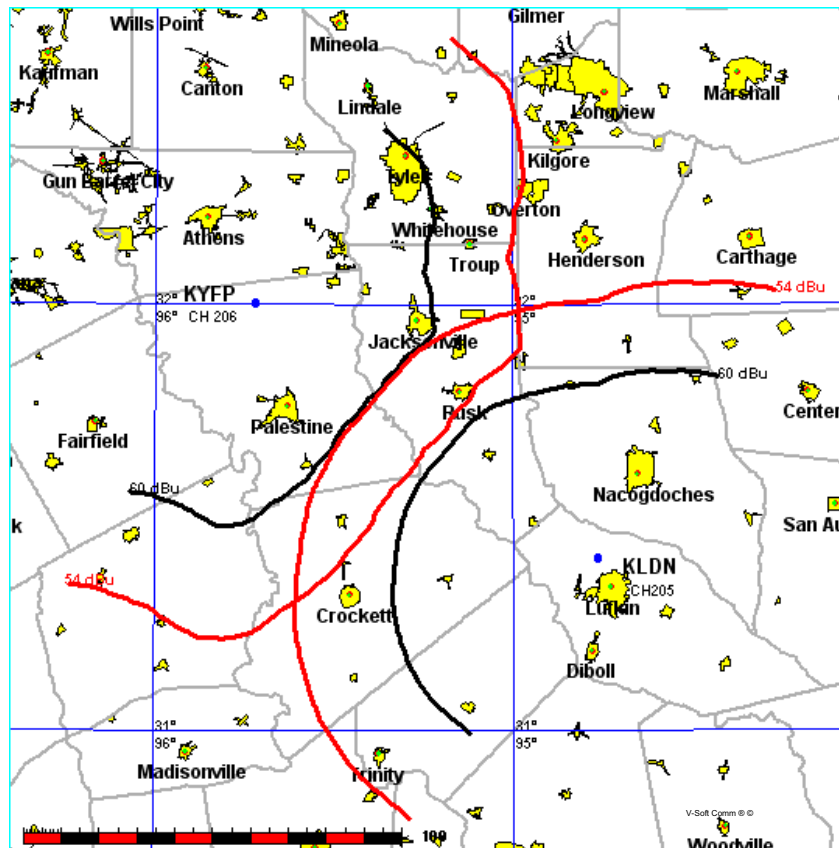
Bible Broadcasting Network, I

FMCommander Allocation Study
11-14-2005

KYFP CH 206 C1 100 kW 282 M COR DA
Prot. = 60 dBu
Intef. = 54 dBu

KLDN CH 205 C1 BLED19910418KA
50 kW, 282 M COR DA
Prot. = 60 dBu
Intef. = 54 dBu

Scale = 1:2,000,000



Tabulations of contours will be supplied upon request.

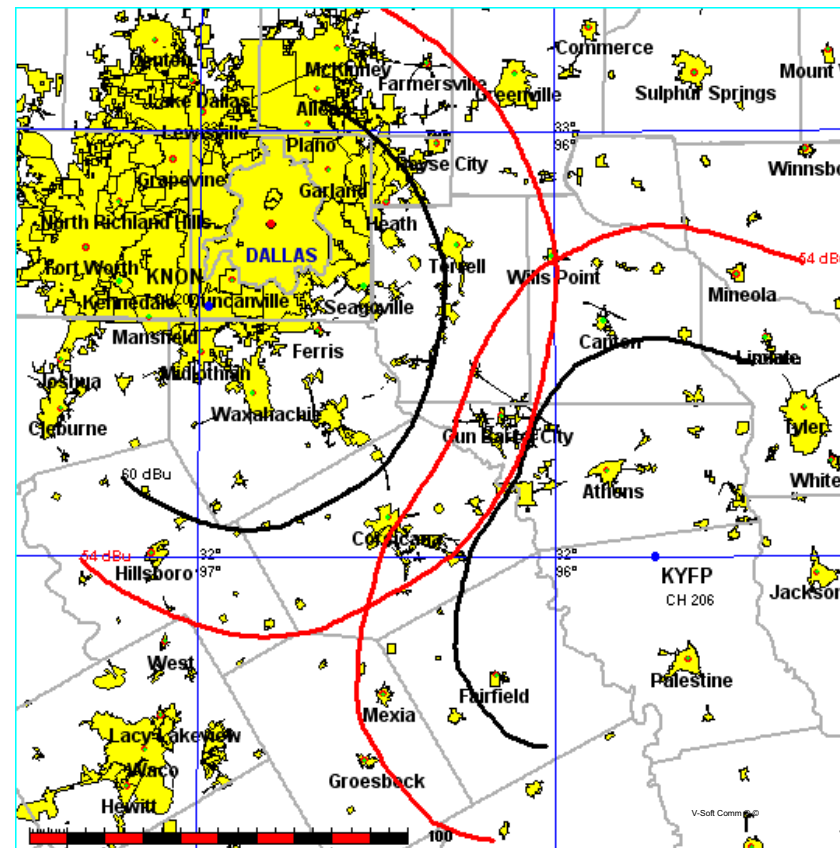
Bible Broadcasting Network, I

FMCommander Allocation Study
11-14-2005

KYFP CH 206 C1 100 kW 282 M COR DA
Prot. = 60 dBu
Intef. = 54 dBu

KNON CH 207 C1 BLED19900309KA
55 kW, 449 M COR DA
Prot. = 60 dBu
Intef. = 54 dBu

Scale = 1:2,000,000



Tabulations of contours will be supplied upon request.



Exhibit 15.2

Contour Protections Towards Select Stations

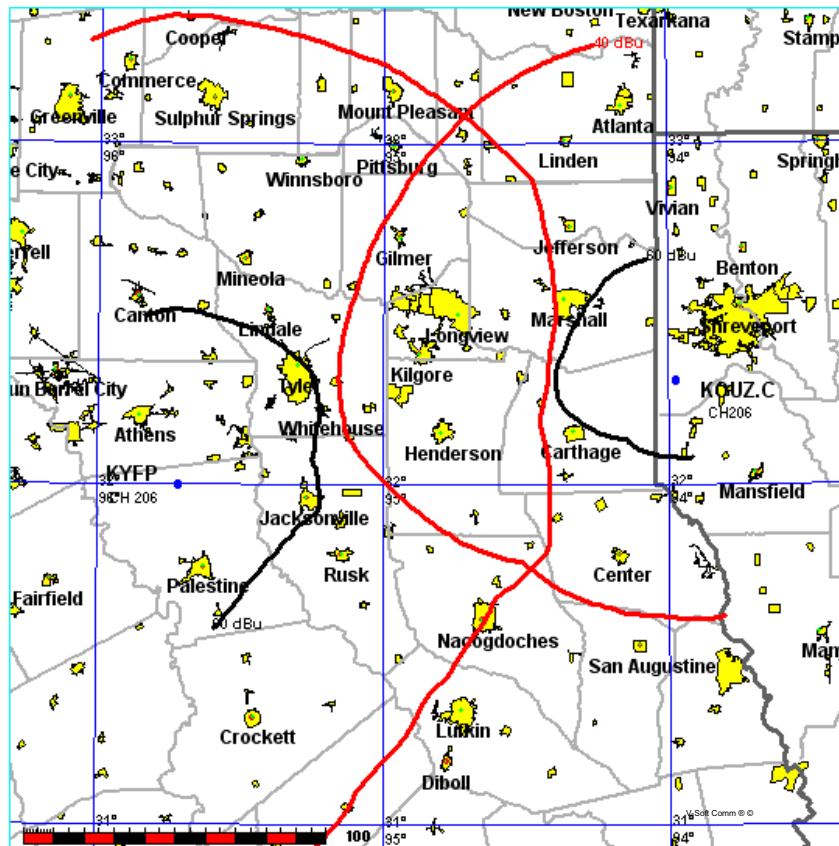
Bible Broadcasting Network, I

FMCommander Allocation Study
11-14-2005

KYFP CH 206 C1
100 kW 282 M COR DA
Prot. = 60 dBu
Intef. = 40 dBu

KOUZ.C CH 206 C2 BPED19961112MC
20 kW, 208 M COR DA
Prot. = 60 dBu
Intef. = 40 dBu

Scale = 1:2,500,000



Tabulations of contours will be supplied upon request.

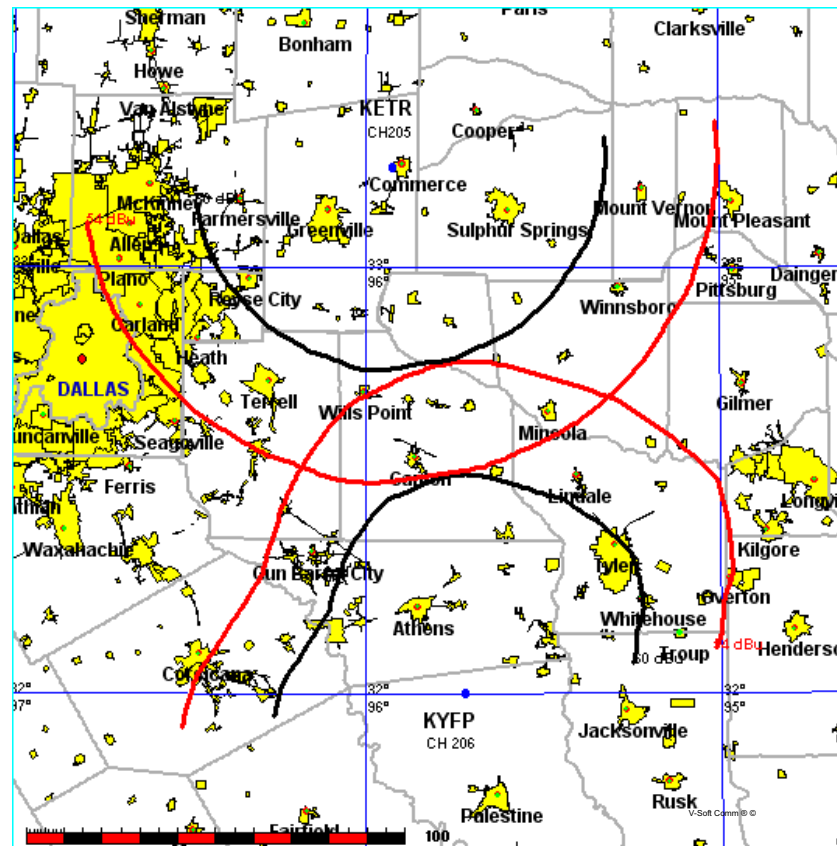
Bible Broadcasting Network, I

FMCommander Allocation Study
11-14-2005

KYFP CH 206 C1
100 kW 282 M COR DA
Prot. = 60 dBu
Intef. = 54 dBu

KETR CH 205 C1 BLED19830608AD
100 kW, 276 M COR
Prot. = 60 dBu
Intef. = 54 dBu

Scale = 1:2,000,000



Tabulations of contours will be supplied upon request.



Exhibit 15.2

Contour Protections Towards Select Stations

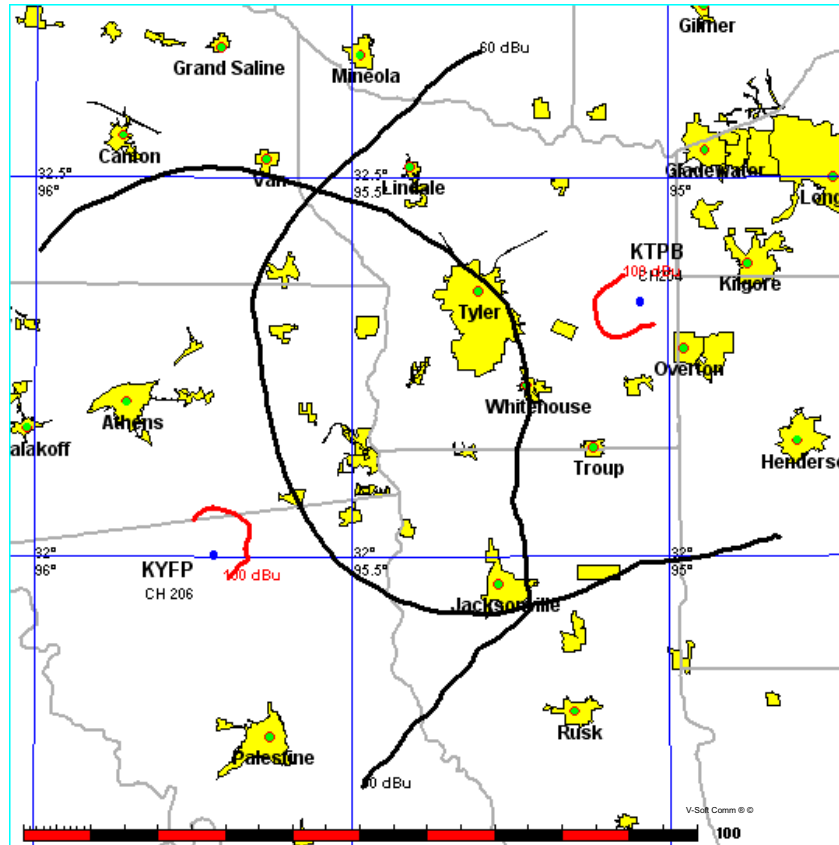
Bible Broadcasting Network, I

FMCommander Allocation Study
11-14-2005

KYFP CH 206 C1 100 kW 282 M COR DA
Prot. = 60 dBu
Intef. = 100 dBu

KTPB CH 204 C1 BLED19970326KA
79 kW, 302 M COR DA
Prot. = 60 dBu
Intef. = 100 dBu

Scale = 1:1,125,000



Tabulations of contours will be supplied upon request.

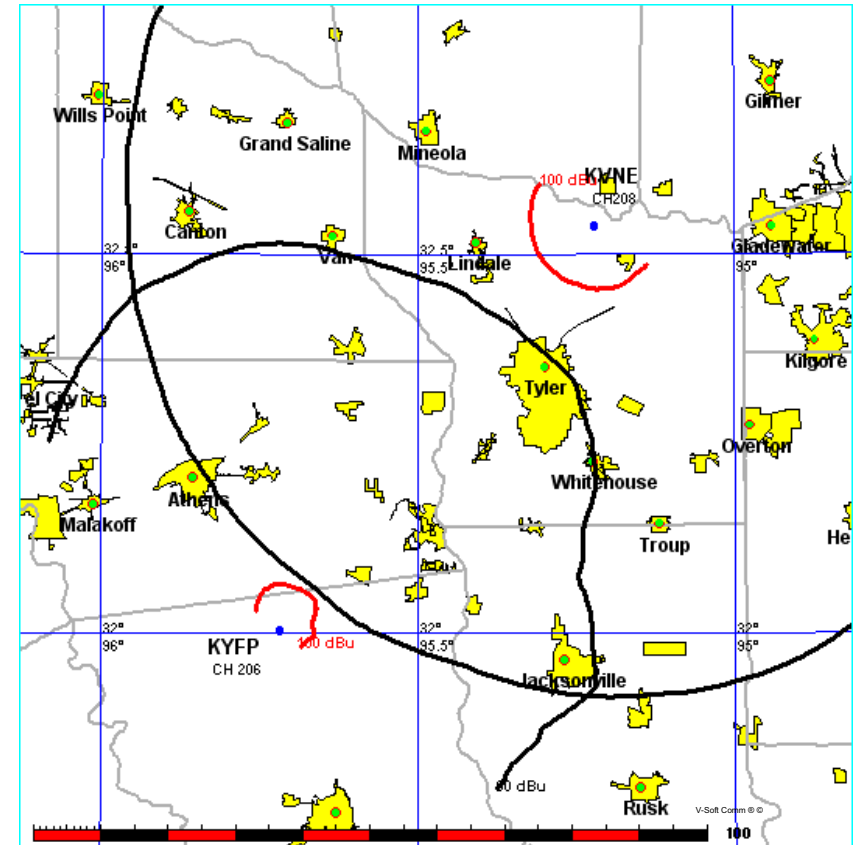
Bible Broadcasting Network, I

FMCommander Allocation Study
11-14-2005

KYFP CH 206 C1 100 kW 282 M COR DA
Prot. = 60 dBu
Intef. = 100 dBu

KVNE CH 208 C1 BLED19950315KA
96 kW, 397 M COR
Prot. = 60 dBu
Intef. = 100 dBu

Scale = 1:1,125,000



Tabulations of contours will be supplied upon request.



Exhibit 15.2

Contour Protections Towards Select Stations

Bible Broadcasting Network, I

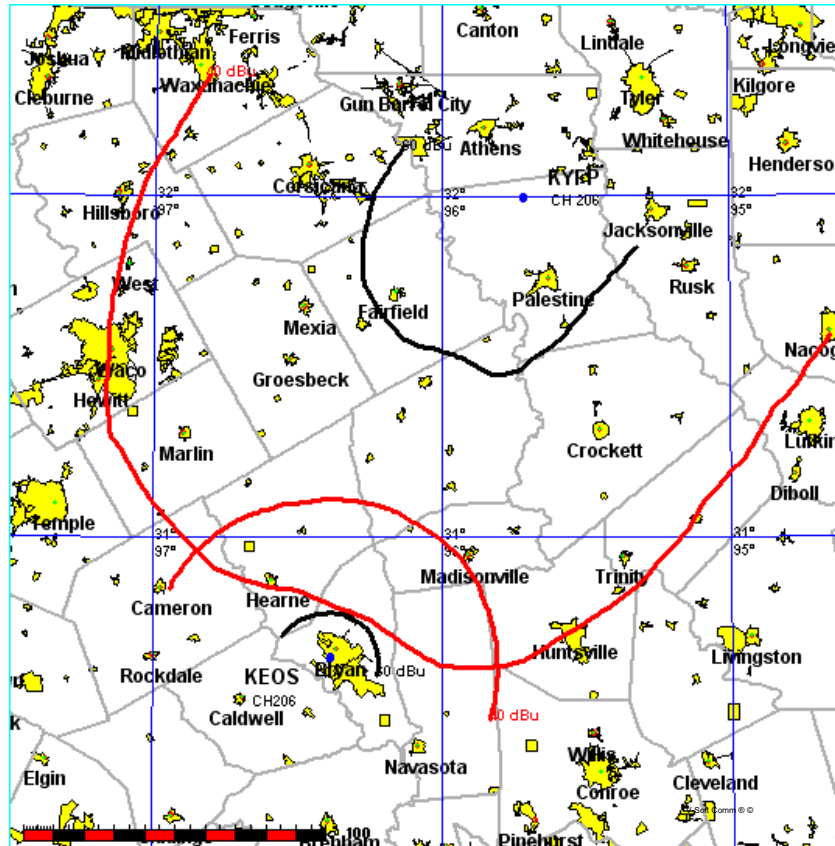
FMCommander Allocation Study
11-14-2005

KYFP CH 206 C1
100 kW 282 M COR DA
Prot. = 60 dBu
Intef. = 40 dBu

KEOS CH 206 A
1 kW, 164 M COR
Prot. = 60 dBu
Intef. = 40 dBu

BMLED20050330AYO

Scale = 1:2,500,000



Tabulations of contours will be supplied upon request.

Bible Broadcasting Network, I

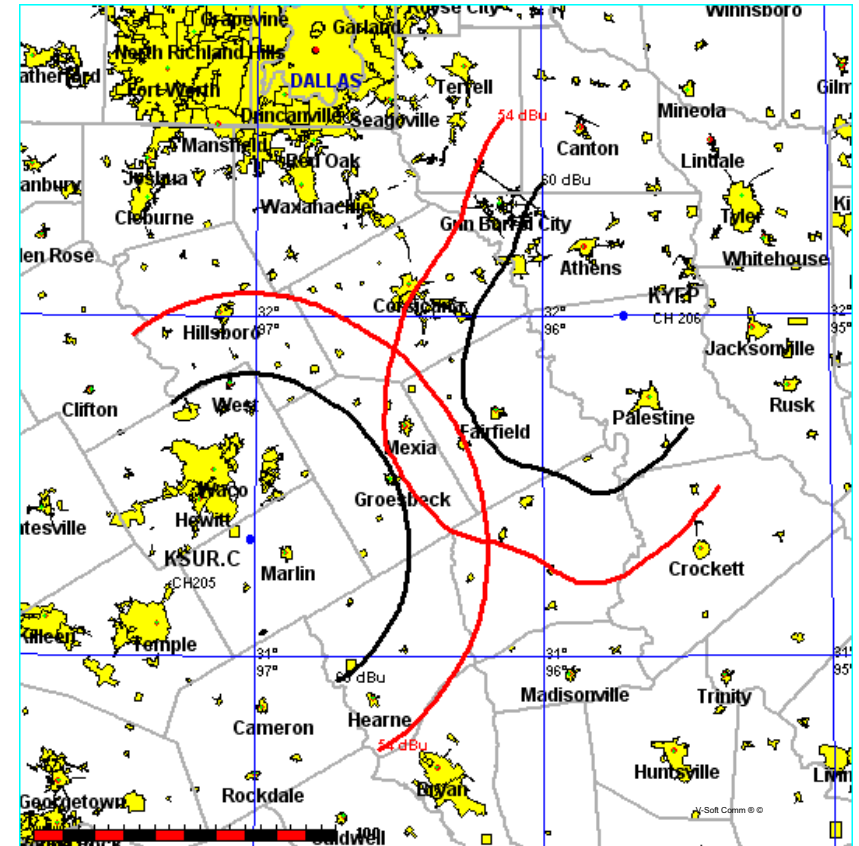
FMCommander Allocation Study
11-14-2005

KYFP CH 206 C1
100 kW 282 M COR DA
Prot. = 60 dBu
Intef. = 54 dBu

KSUR.C CH 205 C2
50 kW, 271 M COR
Prot. = 60 dBu
Intef. = 54 dBu

BPED19960924MF

Scale = 1:2,500,000



Tabulations of contours will be supplied upon request.



Exhibit 15.3

Tabulation of Proposed Directional Antenna Pattern

Antenna Pattern

Pre-Rotation Antenna Pattern....

Azimuth (deg)	Effective Field
0.0	1.000
10.0	1.000
20.0	1.000
30.0	1.000
40.0	1.000
50.0	1.000
60.0	0.796
70.0	0.634
80.0	0.505
90.0	0.505
100.0	0.505
110.0	0.402
120.0	0.402
130.0	0.402
140.0	0.473
150.0	0.505
160.0	0.634
170.0	0.796
180.0	1.000
190.0	1.000
200.0	0.841
210.0	0.841
220.0	1.000
230.0	1.000
240.0	1.000
250.0	0.796
260.0	0.634
270.0	0.505
280.0	0.402
290.0	0.355
300.0	0.355
310.0	0.402
320.0	0.505
330.0	0.634
340.0	0.796
350.0	0.891

