

TECHNICAL EXHIBIT
DTV MAXIMIZATION APPLICATION
STATION WTXX(DT)
WATERBURY, CONNECTICUT
CH 20 470 KW (MAX-DA) 516 M

Technical Narrative

This Technical Exhibit supports an application for digital television (DTV) station WTXX(DT) for its "maximized" DTV operation at Waterbury, Connecticut. This application requests a construction permit (CP) for WTXX(DT) digital television operation on channel 20 at Waterbury with a directional effective radiated power of 470 kilowatts. WTXX(DT) intends to use a Dielectric TFU-24DSC3C140DTV for digital operation.

Proposed Facilities

Station WTXX(DT) proposes to operate DTV channel 20 from its authorized DTV construction permit facility. The antenna height above average terrain for the channel 20 DTV operation will be 516 meters. The proposed WTXX(DT) effective radiated power exceeds the Commission's *Appendix B* allocated maximum effective radiated power in some azimuthal directions for WTXX(DT).¹ Therefore, an allocation study was completed to ensure no prohibited interference would occur.

¹ See Seventh Report And Order And Eighth Further Notice Of Proposed Rule Making in the Matter of Advanced Television Systems and their Impact Upon the Existing Television Broadcast Service, MB Docket 87-268, Released August 6, 2007; Adopted August 1, 2007.

The proposed DTV transmitter site will be located at the authorized WTX(DT) tower. Therefore, the proposed site location is:

41° 42' 13" North Latitude
72° 49' 57" West Longitude

A sketch of antenna and pertinent elevations are included as Figure 1.

The Appendix contains the horizontal plane radiation pattern for the proposed antenna system.

Figure 2 is a map showing the proposed DTV predicted coverage contour and the associated DTV appendix B Noise-Limited coverage contour. The extent of the contours have been calculated using the normal FCC prediction method. The Waterbury city limits were derived from information contained in the 2000 U.S. Census of Population and Housing.

Population Served

The herein proposed WTX(DT) "maximized" facility is predicted to serve 5,192,582 persons, post-transition based upon the 2000 Census. WTX(DT)'s associated Appendix B facility is predicted to serve 3,935,000 persons. Therefore, the herein proposed WTX(DT) facility would serve more than 100% of WTX(DT)'s Appendix B population. The OET-69 studies were conducted using a cell size of 2.0 km/side and distance increments for Longley-Rice analysis of 0.5 km.

Allocation Considerations

The proposed WTX(DT) Channel 20 facility meets the requirements of Section 73.623 of the FCC Rules concerning predicted interference to other Appendix B DTV allotments. Longley-Rice interference analyses were conducted pursuant to the requirements of the FCC Rules; OET Bulletin No. 69; and published FCC guidelines for preparation of such interference analyses. The Longley-Rice interference analyses were conducted using the software developed by du Treil, Lundin & Rackley, Inc. based on the FCC published software routines.² Stations selected for analysis were determined pursuant to the distance requirements outlined in the FCC DTV Processing Guidelines Public Notice. The results of the interference analyses for the proposed WTX(DT) facility are summarized herein at Figure 3. As indicated therein, the proposed facility will meet the 0.5% criterion outlined in the FCC Rules and published guidelines with respect to all considered stations.³

Radiofrequency Electromagnetic Field Exposure

The proposed WTX(DT) facilities were evaluated in terms of potential radiofrequency electromagnetic field exposure at ground level to workers and the general public. The radiation center for the proposed WTX(DT) antenna is located 399 meters above ground level. The maximum

2 The duTreil, Lundin & Rackley, Inc. DTV interference analysis program is based on the program and procedures outlined by the FCC in the Sixth Report and Order; subsequent Memorandum Opinion and Order; and FCC OET Bulletin No. 69. A nominal grid size resolution of 2 km was employed.

3 Interference analysis results reflect the net change in interference to a given station considering the interference predicted to occur from all other stations (i.e. "masking") including the allotment facility for WTX(DT). This properly reflects the net interference change for determining compliance with the FCC 0.5% *de minimis* standard.

effective radiated power is 470 kilowatts. A "worst case" downward relative field value of 0.25 is assumed for the antenna's downward radiation. The calculated power density at a point 2 meters above ground level is 0.0062 mW/cm². This is less than 5 percent of the Commission's recommended limit of 0.34 mW/cm² for channel 20 for an "uncontrolled" environment.

Access to the transmitting site is restricted and appropriately marked with warning signs. As this is a multi-user site an agreement between the stations will control access. In the event that workers or other authorized personnel enter restricted areas or climb the tower, appropriate measures will be taken to assure worker safety with respect to radio frequency radiation exposure. Such measures include reducing the average exposure by spreading out the work over a longer period of time, wearing "accepted" RFR protective clothing and/or RFR exposure monitors or scheduling work when the stations are at reduced power or shut down. The proposed WTX(DT) operation appears to be otherwise categorically excluded from environmental processing.

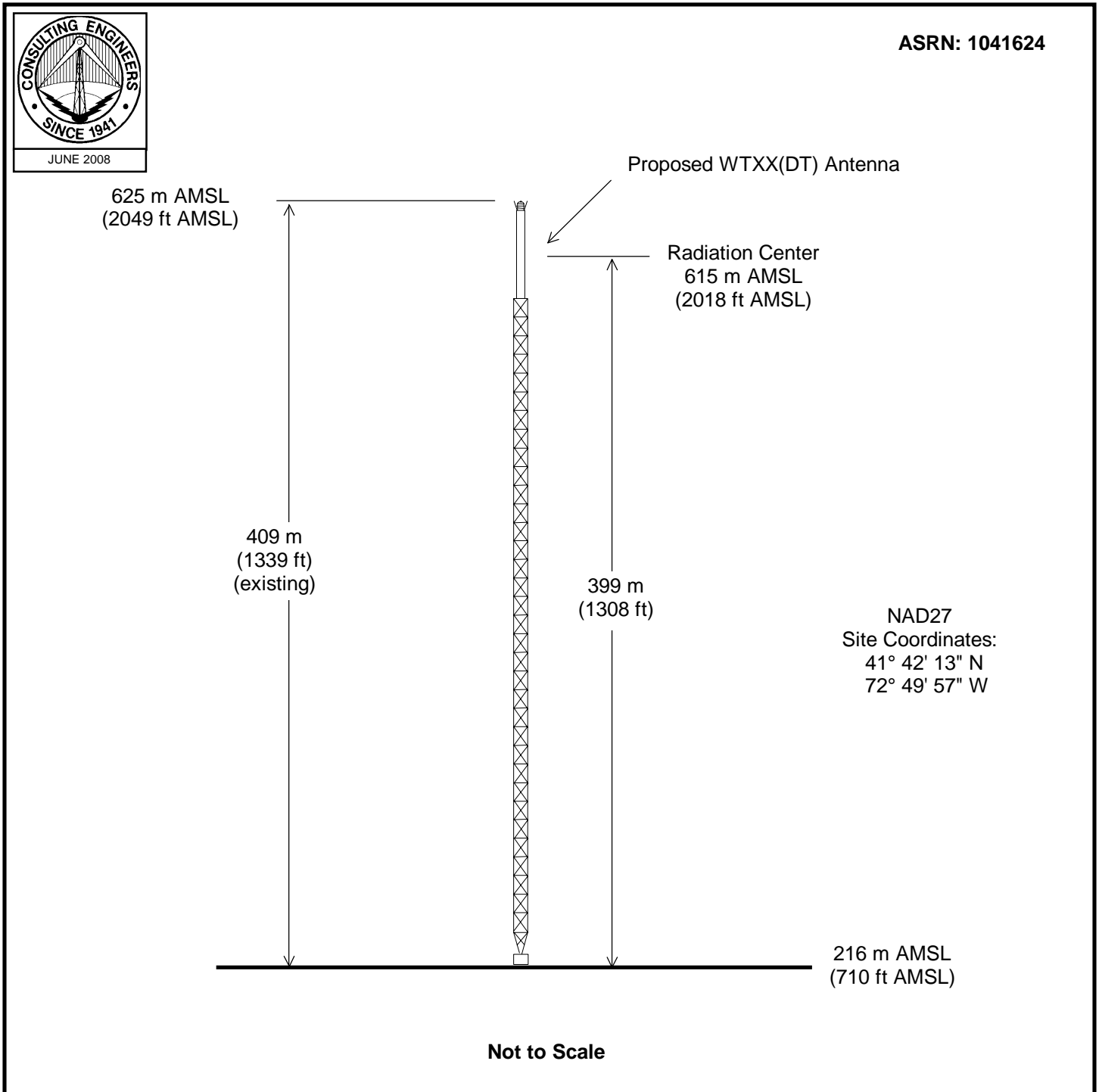
It is noted that this statement only addresses the potential for radiofrequency electromagnetic field exposure. All other aspects of the environmental processing analysis will be or already have been provided to the FCC by the tower owner.

Charles Cooper

du Treil, Lundin & Rackley, Inc.
201 Fletcher Avenue
Sarasota, Florida 32437
941.329.6000

June 19, 2008

Figure 1

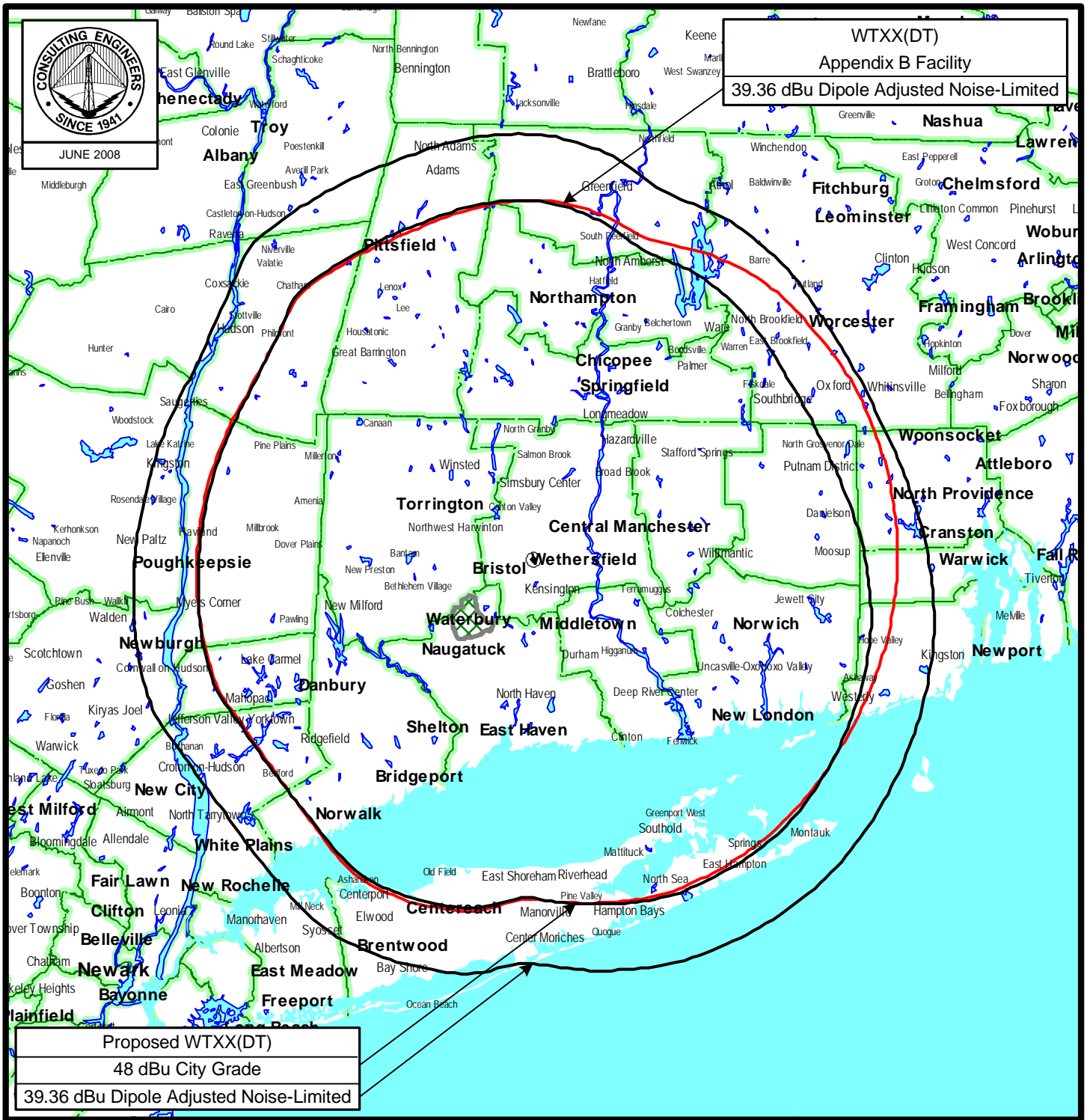


ANTENNA AND SUPPORTING STRUCTURE

DTV STATION WTXX(DT)
WATERBURY, CONNECTICUT
CH 20 470 KW (MAX-DA) 516 M

du Treil, Lundin & Rackley, Inc. Sarasota, Florida

Figure 2



PREDICTED COVERAGE CONTOURS

DTV STATION WTXS(DT)

WATERBURY, CONNECTICUT

CH 20 470 KW (MAX-DA) 516 M

du Treil, Lundin & Rackley, Inc Sarasota, Florida

Figure 3

TW Census data selected 2000
Post Transition Data Base Selected /export/home/cdbs/pt_tvdb.sff

TV INTERFERENCE and SPACING ANALYSIS PROGRAM

Date: 06-19-2008 Time: 09:21:13

Record Selected for Analysis

WTXX USERRECORD-01 WATERBURY CT US
Channel 20 ERP 470. kW HAAT 516. m RCAMSL 00615 m
Latitude 041-42-13 Longitude 0072-49-57
Status APP Zone 2 Border
Dir Antenna Make CDB Model 00000000060837 Beam tilt N Ref Azimuth 330.
Last update Cutoff date Docket
Comments
Applicant

Cell Size for Service Analysis 2.0 km/side

Distance Increments for Longley-Rice Analysis 0.50 km

Facility meets maximum height/power limits

| Azimuth (Deg) | ERP (kW) | HAAT (m) | 41.0 dBu F(50,90) (km) |
|------------------|-------------|-------------|---------------------------|
| 0.0 | 398.673 | 550.8 | 109.4 |
| 45.0 | 102.063 | 556.6 | 97.8 |
| 90.0 | 140.628 | 577.3 | 101.8 |
| 135.0 | 439.037 | 574.0 | 111.6 |
| 180.0 | 409.130 | 473.6 | 103.7 |
| 225.0 | 419.278 | 475.1 | 104.0 |
| 270.0 | 395.218 | 459.1 | 102.1 |
| 315.0 | 434.507 | 463.6 | 103.4 |

Evaluation toward Class A Stations

No Spacing violations or contour overlap to Class A stations

Class A Evaluation Complete

SPACING VIOLATION FOUND BETWEEN STATION

WTXX 20 WATERBURY CT USERRECORD01

Figure 3

and station

SHORT TO: WTXX 20 WATERBURY CT BLCT 19820428KE
041-31- 4 0073-01- 7
Req. separation 217.3 Actual separation 25.8 Short 191.5 km

SHORT TO: WTXX 20 WATERBURY CT DTVPLN DTP0721
41 -42-13 72 -49-57
Req. separation 223.7 Actual separation 0.0 Short 223.7 km

SHORT TO: WTXX 20 WATERBURY CT BPCDT 20080328AIO
041-42-13 0072-49-57
Req. separation 196.3 Actual separation 0.0 Short 196.3 km

SHORT TO: WCVB-TV 20 BOSTON MA BLCDT 20020102AAH
042-18-37 0071-14-14
Req. separation 196.3 Actual separation 148.3 Short 48.0 km

SHORT TO: WCVB-TV 20 BOSTON MA DTVPLN DTP0727
42 -18-37 71 -14-14
Req. separation 223.7 Actual separation 148.3 Short 75.4 km

SHORT TO: WWLP 22 SPRINGFIELD MA BLCT 19841128KJ
042-05- 5 0072-42-14
Req. separation => 24.1 <= 80.5 Actual separation 43.7 Short 36.8(19.6) km

LANDMOBILE SPACING VIOLATIONS FOUND

NONE

Proposed facility OK to FCC Monitoring Stations

Proposed facility OK toward West Virginia quiet zone

Proposed facility OK toward Table Mountain

Proposed facility is within the Canadian coordination distance
Distance to border = 368.5km

Proposed facility is beyond the Mexican coordination distance

Proposed station is OK toward AM broadcast stations

Start of Interference Analysis

Figure 3

| Channel | Proposed Station Call City/State | ARN |
|---------|-------------------------------------|--------------|
| 20 | WTXX WATERBURY CT | USERRECORD01 |

| Chans | Call | City/State | Dist(km) | Status | Application Ref. No. |
|-------|---------|----------------|----------|--------|----------------------|
| 17 | WEHR-CA | MANHATTAN NY | 143.4 | LIC | BLTTL -19960116JC |
| 19 | WGBH-TV | BOSTON MA | 148.0 | LIC | BLEDT -20021219AAM |
| 19 | WGBH-TV | BOSTON MA | 148.0 | PLN | DTVPLN -DTVP0683 |
| 20 | WCVB-TV | BOSTON MA | 148.0 | LIC | BLCDT -20020102AAH |
| 20 | WCVB-TV | BOSTON MA | 148.0 | PLN | DTVPLN -DTVP0727 |
| 20 | WBGH-CA | BINGHAMTON NY | 260.5 | LIC | BLTTA -20050505AAV |
| 20 | WNYI | ITHACA NY | 312.9 | CP | BPCDT -20080331AEE |
| 20 | WNYI | ITHACA NY | 312.9 | PLN | DTVPLN -DTVP0737 |
| 21 | WLIW | GARDEN CITY NY | 114.1 | CP | BPEDT -20080317AAQ |
| 21 | WLIW | GARDEN CITY NY | 114.1 | PLN | DTVPLN -DTVP0774 |
| 21 | WSBE-TV | PROVIDENCE RI | 129.3 | LIC | BLEDT -20050307ACR |
| 21 | WSBE-TV | PROVIDENCE RI | 129.3 | PLN | DTVPLN -DTVP0780 |
| 28 | W28AJ | ALLINGTOWN CT | 47.2 | LIC | BLTTL -20010608AAO |
| 28 | WFXQ-CA | SPRINGFIELD MA | 62.8 | LIC | BLTTA -20060302ABV |

Analysis of Interference to Affected Station 1

| Channel | Call | City/State | Application Ref. No. |
|---------|---------|--------------|----------------------|
| 17 | WEHR-CA | MANHATTAN NY | BLTTL -19960116JC |

| Chans | Call | City/State | Dist(km) | Status | Application Ref. No. |
|-------|---------|-----------------|----------|--------|----------------------|
| 17 | W17CD | STAMFORD CT | 51.8 | LIC | BLTTL -20070201BSO |
| 17 | DW44BC | BRENTWOOD NY | 80.9 | APP | BMPPTL -19960517UQ |
| 17 | WMHT | SCHENECTADY NY | 209.9 | LIC | BLET -331 |
| 17 | WMHT | SCHENECTADY NY | 209.9 | APP | BSTA -20051220AOK |
| 17 | WSYR-TV | SYRACUSE NY | 296.8 | LIC | BLCDT -20030812ABK |
| 17 | WSYR-TV | SYRACUSE NY | 296.8 | PLN | DTVPLN -DTVP0611 |
| 17 | WPHL-TV | PHILADELPHIA PA | 132.0 | LIC | BLCT -2611 |
| 17 | WPHL-TV | PHILADELPHIA PA | 131.8 | PLN | DTVPLN -DTVP0616 |
| 17 | WPHL-TV | PHILADELPHIA PA | 132.0 | CP | BPCDT -20080307ABI |
| 17 | WPXQ | BLOCK ISLAND RI | 202.1 | LIC | BLCDT -20050811AAT |
| 17 | WPXQ | BLOCK ISLAND RI | 202.1 | PLN | DTVPLN -DTVP0618 |
| 18 | WMBC-TV | NEWTON NJ | 22.2 | LIC | BLCDT -20060803AMO |
| 18 | WMBC-TV | NEWTON NJ | 22.2 | PLN | DTVPLN -DTVP0646 |
| 20 | WTXX | WATERBURY CT | 143.4 | PLN | DTVPLN -DTVP0721 |
| 20 | WTXX | WATERBURY CT | 143.4 | CP | BPCDT -20080328AIO |
| 21 | WLIW | GARDEN CITY NY | 45.1 | CP | BPEDT -20080317AAQ |
| 21 | WLIW | GARDEN CITY NY | 45.1 | PLN | DTVPLN -DTVP0774 |
| 24 | WNYE-TV | NEW YORK NY | 0.9 | CP MOD | BPEDT -20070124AAX |
| 24 | WNYE-TV | NEW YORK NY | 0.9 | PLN | DTVPLN -DTVP0895 |
| 31 | WTIC-TV | HARTFORD CT | 143.4 | CP MOD | BMPEDT -20040616AAM |
| 31 | WTIC-TV | HARTFORD CT | 143.4 | PLN | DTVPLN -DTVP1133 |
| 31 | WPPX | WILMINGTON DE | 131.8 | LIC | BLCDT -20031203AFL |

Figure 3

| | | | | | | |
|----|---------|-----------------|-------|-----|---------------|--------------|
| 31 | WPPX | WILMINGTON DE | 131.8 | PLN | DTVPLN | -DTVP1134 |
| 31 | WPXN-TV | NEW YORK NY | 4.7 | LIC | BLCT | -19860703KH |
| 31 | WPXN-TV | NEW YORK NY | 4.7 | PLN | DTVPLN | -DTVP1155 |
| 31 | WPXN-TV | NEW YORK NY | 4.7 | APP | BPCT | -19961205KF |
| 32 | WXNY-LP | NEW YORK NY | 3.6 | LIC | BLTTL | -20070615ACZ |
| 32 | WPSG | PHILADELPHIA PA | 131.8 | LIC | BLCDT | -20021025AAS |
| 32 | WPSG | PHILADELPHIA PA | 131.8 | PLN | DTVPLN | -DTVP1192 |
| 20 | WTXX | WATERBURY CT | 143.4 | APP | USERRECORD-01 | |

Proposed station is beyond the site to nearest cell evaluation distance

Analysis of Interference to Affected Station 2

| Channel | Call | City/State | Application Ref. No. |
|---------|---------|------------|----------------------|
| 19 | WGBH-TV | BOSTON MA | BLEDT -20021219AAM |

Stations Potentially Affecting This Station

| Chan | Call | City/State | Dist(km) | Status | Application Ref. No. |
|------|---------|--------------|----------|--------|----------------------|
| 18 | WMFP | LAWRENCE MA | 1.1 | LIC | BLCDT -20061219ACO |
| 18 | WMFP | LAWRENCE MA | 1.1 | PLN | DTVPLN -DTVP0641 |
| 19 | WABI-TV | BANGOR ME | 317.8 | LIC | BLCDT -20050909AAM |
| 19 | WABI-TV | BANGOR ME | 317.8 | PLN | DTVPLN -DTVP0684 |
| 19 | WSYT | SYRACUSE NY | 410.9 | LIC | BLCDT -20050705AAM |
| 19 | WSYT | SYRACUSE NY | 410.9 | PLN | DTVPLN -DTVP0696 |
| 20 | WTXX | WATERBURY CT | 148.0 | PLN | DTVPLN -DTVP0721 |
| 20 | WCVB-TV | BOSTON MA | 0.0 | LIC | BLCDT -20020102AAH |
| 20 | WCVB-TV | BOSTON MA | 0.0 | PLN | DTVPLN -DTVP0727 |
| 20 | WTXX | WATERBURY CT | 148.0 | APP | USERRECORD-01 |

Total scenarios = 4

| | | | |
|-----------------|--------------------------------|------------------|-----------------|
| Result key: | 1 | | |
| Scenario | 1 | Affected station | 2 |
| Before Analysis | | | |
| Results for: | 19A MA BOSTON | BLEDT | 20021219AAM LIC |
| HAAT | 374.0 m, ATV ERP | 700.0 kW | |
| | | POPULATION | AREA (sq km) |
| | within Noise Limited Contour | 7476947 | 34159.8 |
| | not affected by terrain losses | 7350932 | 32676.0 |
| | lost to NTSC IX | 0 | 0.0 |
| | lost to additional IX by ATV | 10604 | 157.3 |
| | lost to ATV IX only | 10604 | 157.3 |
| | lost to all IX | 10604 | 157.3 |

Potential Interfering Stations Included in above Scenario 1

| | | | |
|-----------------|-------|-------------|-----|
| 18A MA LAWRENCE | BLCDT | 20061219ACO | LIC |
| 19A ME BANGOR | BLCDT | 20050909AAM | LIC |

Figure 3

20A CT WATERBURY DTVPLN DTVP0721 PLN

After Analysis

Results for: 19A MA BOSTON BLEDT 20021219AAM LIC
 HAAT 374.0 m, ATV ERP 700.0 kW

| | POPULATION | AREA (sq km) |
|--------------------------------|------------|--------------|
| within Noise Limited Contour | 7476947 | 34159.8 |
| not affected by terrain losses | 7350932 | 32676.0 |
| lost to NTSC IX | 0 | 0.0 |
| lost to additional IX by ATV | 12852 | 185.5 |
| lost to ATV IX only | 12852 | 185.5 |
| lost to all IX | 12852 | 185.5 |

Potential Interfering Stations Included in above Scenario 1

18A MA LAWRENCE BLCDT 20061219ACO LIC
 19A ME BANGOR BLCDT 20050909AAM LIC
 20A CT WATERBURY USERRECORD01 APP

Percent new IX = 0.0306%

Result key: 2
 Scenario 2 Affected station 2
 Before Analysis

Results for: 19A MA BOSTON BLEDT 20021219AAM LIC
 HAAT 374.0 m, ATV ERP 700.0 kW

| | POPULATION | AREA (sq km) |
|--------------------------------|------------|--------------|
| within Noise Limited Contour | 7476947 | 34159.8 |
| not affected by terrain losses | 7350932 | 32676.0 |
| lost to NTSC IX | 0 | 0.0 |
| lost to additional IX by ATV | 17669 | 169.3 |
| lost to ATV IX only | 17669 | 169.3 |
| lost to all IX | 17669 | 169.3 |

Potential Interfering Stations Included in above Scenario 2

18A MA LAWRENCE BLCDT 20061219ACO LIC
 19A ME BANGOR DTVPLN DTVP0684 PLN
 20A CT WATERBURY DTVPLN DTVP0721 PLN

After Analysis

Results for: 19A MA BOSTON BLEDT 20021219AAM LIC
 HAAT 374.0 m, ATV ERP 700.0 kW

| | POPULATION | AREA (sq km) |
|--------------------------------|------------|--------------|
| within Noise Limited Contour | 7476947 | 34159.8 |
| not affected by terrain losses | 7350932 | 32676.0 |
| lost to NTSC IX | 0 | 0.0 |
| lost to additional IX by ATV | 19917 | 197.6 |
| lost to ATV IX only | 19917 | 197.6 |
| lost to all IX | 19917 | 197.6 |

Potential Interfering Stations Included in above Scenario 2

18A MA LAWRENCE BLCDT 20061219ACO LIC

Figure 3

19A ME BANGOR DTVPLN DTVP0684 PLN
 20A CT WATERBURY USERRECORD01 APP

Percent new IX = 0.0307%

Result key: 3
 Scenario 3 Affected station 2
 Before Analysis

Results for: 19A MA BOSTON BLEDT 20021219AAM LIC
 HAAT 374.0 m, ATV ERP 700.0 kW

| | POPULATION | AREA (sq km) |
|--------------------------------|------------|--------------|
| within Noise Limited Contour | 7476947 | 34159.8 |
| not affected by terrain losses | 7350932 | 32676.0 |
| lost to NTSC IX | 0 | 0.0 |
| lost to additional IX by ATV | 10953 | 165.3 |
| lost to ATV IX only | 10953 | 165.3 |
| lost to all IX | 10953 | 165.3 |

Potential Interfering Stations Included in above Scenario 3

18A MA LAWRENCE DTVPLN DTVP0641 PLN
 19A ME BANGOR BLCDT 20050909AAM LIC
 20A CT WATERBURY DTVPLN DTVP0721 PLN

After Analysis

Results for: 19A MA BOSTON BLEDT 20021219AAM LIC
 HAAT 374.0 m, ATV ERP 700.0 kW

| | POPULATION | AREA (sq km) |
|--------------------------------|------------|--------------|
| within Noise Limited Contour | 7476947 | 34159.8 |
| not affected by terrain losses | 7350932 | 32676.0 |
| lost to NTSC IX | 0 | 0.0 |
| lost to additional IX by ATV | 13201 | 193.5 |
| lost to ATV IX only | 13201 | 193.5 |
| lost to all IX | 13201 | 193.5 |

Potential Interfering Stations Included in above Scenario 3

18A MA LAWRENCE DTVPLN DTVP0641 PLN
 19A ME BANGOR BLCDT 20050909AAM LIC
 20A CT WATERBURY USERRECORD01 APP

Percent new IX = 0.0306%

Result key: 4
 Scenario 4 Affected station 2
 Before Analysis

Results for: 19A MA BOSTON BLEDT 20021219AAM LIC
 HAAT 374.0 m, ATV ERP 700.0 kW

| | POPULATION | AREA (sq km) |
|--------------------------------|------------|--------------|
| within Noise Limited Contour | 7476947 | 34159.8 |
| not affected by terrain losses | 7350932 | 32676.0 |
| lost to NTSC IX | 0 | 0.0 |
| lost to additional IX by ATV | 18018 | 177.4 |
| lost to ATV IX only | 18018 | 177.4 |

Figure 3

lost to all IX 18018 177.4

Potential Interfering Stations Included in above Scenario 4

| | | | |
|------------------|--------|----------|-----|
| 18A MA LAWRENCE | DTVPLN | DTVP0641 | PLN |
| 19A ME BANGOR | DTVPLN | DTVP0684 | PLN |
| 20A CT WATERBURY | DTVPLN | DTVP0721 | PLN |

After Analysis

Results for: 19A MA BOSTON BLEDT 20021219AAM LIC

| | | |
|--------------------------------|------------|--------------|
| HAAT 374.0 m, ATV ERP 700.0 kW | POPULATION | AREA (sq km) |
| within Noise Limited Contour | 7476947 | 34159.8 |
| not affected by terrain losses | 7350932 | 32676.0 |
| lost to NTSC IX | 0 | 0.0 |
| lost to additional IX by ATV | 20266 | 205.6 |
| lost to ATV IX only | 20266 | 205.6 |
| lost to all IX | 20266 | 205.6 |

Potential Interfering Stations Included in above Scenario 4

| | | | |
|------------------|--------------|----------|-----|
| 18A MA LAWRENCE | DTVPLN | DTVP0641 | PLN |
| 19A ME BANGOR | DTVPLN | DTVP0684 | PLN |
| 20A CT WATERBURY | USERRECORD01 | | APP |

Percent new IX = 0.0307%

Worst case new IX 0.0307% Scenario 4

#####

Analysis of Interference to Affected Station 3

Analysis of current record

| Channel | Call | City/State | Application Ref. No. |
|---------|---------|------------|----------------------|
| 19 | WGBH-TV | BOSTON MA | DTVPLN -DTVP0683 |

Stations Potentially Affecting This Station

| Chan | Call | City/State | Dist(km) | Status | Application Ref. No. |
|------|---------|--------------|----------|--------|----------------------|
| 18 | WMFP | LAWRENCE MA | 1.1 | LIC | BLCDDT -20061219ACO |
| 18 | WMFP | LAWRENCE MA | 1.1 | PLN | DTVPLN -DTVP0641 |
| 19 | WABI-TV | BANGOR ME | 317.8 | LIC | BLCDDT -20050909AAM |
| 19 | WABI-TV | BANGOR ME | 317.8 | PLN | DTVPLN -DTVP0684 |
| 19 | WSYT | SYRACUSE NY | 410.9 | LIC | BLCDDT -20050705AAM |
| 19 | WSYT | SYRACUSE NY | 410.9 | PLN | DTVPLN -DTVP0696 |
| 20 | WTXX | WATERBURY CT | 148.0 | PLN | DTVPLN -DTVP0721 |
| 20 | WCVB-TV | BOSTON MA | 0.0 | LIC | BLCDDT -20020102AAH |
| 20 | WCVB-TV | BOSTON MA | 0.0 | PLN | DTVPLN -DTVP0727 |
| 20 | WTXX | WATERBURY CT | 148.0 | APP | USERRECORD-01 |

Total scenarios = 4

Figure 3

Result key: 5

Scenario 1 Affected station 3

Before Analysis

Results for: 19A MA BOSTON DTVPLN DTVP0683 PLN

| | | |
|--------------------------------|------------|--------------|
| HAAT 374.0 m, ATV ERP 700.0 kW | POPULATION | AREA (sq km) |
| within Noise Limited Contour | 7476947 | 34159.8 |
| not affected by terrain losses | 7350932 | 32676.0 |
| lost to NTSC IX | 0 | 0.0 |
| lost to additional IX by ATV | 10604 | 157.3 |
| lost to ATV IX only | 10604 | 157.3 |
| lost to all IX | 10604 | 157.3 |

Potential Interfering Stations Included in above Scenario 1

| | | | |
|------------------|--------|-------------|-----|
| 18A MA LAWRENCE | BLCDDT | 20061219ACO | LIC |
| 19A ME BANGOR | BLCDDT | 20050909AAM | LIC |
| 20A CT WATERBURY | DTVPLN | DTVP0721 | PLN |

After Analysis

Results for: 19A MA BOSTON DTVPLN DTVP0683 PLN

| | | |
|--------------------------------|------------|--------------|
| HAAT 374.0 m, ATV ERP 700.0 kW | POPULATION | AREA (sq km) |
| within Noise Limited Contour | 7476947 | 34159.8 |
| not affected by terrain losses | 7350932 | 32676.0 |
| lost to NTSC IX | 0 | 0.0 |
| lost to additional IX by ATV | 12852 | 185.5 |
| lost to ATV IX only | 12852 | 185.5 |
| lost to all IX | 12852 | 185.5 |

Potential Interfering Stations Included in above Scenario 1

| | | | |
|------------------|--------------|-------------|-----|
| 18A MA LAWRENCE | BLCDDT | 20061219ACO | LIC |
| 19A ME BANGOR | BLCDDT | 20050909AAM | LIC |
| 20A CT WATERBURY | USERRECORD01 | | APP |

Percent new IX = 0.0306%

Result key: 6

Scenario 2 Affected station 3

Before Analysis

Results for: 19A MA BOSTON DTVPLN DTVP0683 PLN

| | | |
|--------------------------------|------------|--------------|
| HAAT 374.0 m, ATV ERP 700.0 kW | POPULATION | AREA (sq km) |
| within Noise Limited Contour | 7476947 | 34159.8 |
| not affected by terrain losses | 7350932 | 32676.0 |
| lost to NTSC IX | 0 | 0.0 |
| lost to additional IX by ATV | 17669 | 169.3 |
| lost to ATV IX only | 17669 | 169.3 |
| lost to all IX | 17669 | 169.3 |

Potential Interfering Stations Included in above Scenario 2

| | | | |
|-----------------|--------|-------------|-----|
| 18A MA LAWRENCE | BLCDDT | 20061219ACO | LIC |
|-----------------|--------|-------------|-----|

Figure 3

19A ME BANGOR DTVPLN DTVP0684 PLN
20A CT WATERBURY DTVPLN DTVP0721 PLN

After Analysis

Results for: 19A MA BOSTON DTVPLN DTVP0683 PLN
HAAT 374.0 m, ATV ERP 700.0 kW

| | POPULATION | AREA (sq km) |
|--------------------------------|------------|--------------|
| within Noise Limited Contour | 7476947 | 34159.8 |
| not affected by terrain losses | 7350932 | 32676.0 |
| lost to NTSC IX | 0 | 0.0 |
| lost to additional IX by ATV | 19917 | 197.6 |
| lost to ATV IX only | 19917 | 197.6 |
| lost to all IX | 19917 | 197.6 |

Potential Interfering Stations Included in above Scenario 2

18A MA LAWRENCE BLCDDT 20061219ACO LIC
19A ME BANGOR DTVPLN DTVP0684 PLN
20A CT WATERBURY USERRECORD01 APP

Percent new IX = 0.0307%

Result key: 7
Scenario 3 Affected station 3
Before Analysis

Results for: 19A MA BOSTON DTVPLN DTVP0683 PLN
HAAT 374.0 m, ATV ERP 700.0 kW

| | POPULATION | AREA (sq km) |
|--------------------------------|------------|--------------|
| within Noise Limited Contour | 7476947 | 34159.8 |
| not affected by terrain losses | 7350932 | 32676.0 |
| lost to NTSC IX | 0 | 0.0 |
| lost to additional IX by ATV | 10953 | 165.3 |
| lost to ATV IX only | 10953 | 165.3 |
| lost to all IX | 10953 | 165.3 |

Potential Interfering Stations Included in above Scenario 3

18A MA LAWRENCE DTVPLN DTVP0641 PLN
19A ME BANGOR BLCDDT 20050909AAM LIC
20A CT WATERBURY DTVPLN DTVP0721 PLN

After Analysis

Results for: 19A MA BOSTON DTVPLN DTVP0683 PLN
HAAT 374.0 m, ATV ERP 700.0 kW

| | POPULATION | AREA (sq km) |
|--------------------------------|------------|--------------|
| within Noise Limited Contour | 7476947 | 34159.8 |
| not affected by terrain losses | 7350932 | 32676.0 |
| lost to NTSC IX | 0 | 0.0 |
| lost to additional IX by ATV | 13201 | 193.5 |
| lost to ATV IX only | 13201 | 193.5 |
| lost to all IX | 13201 | 193.5 |

Potential Interfering Stations Included in above Scenario 3

Figure 3

18A MA LAWRENCE DTVPLN DTVP0641 PLN
19A ME BANGOR BLCDDT 20050909AAM LIC
20A CT WATERBURY USERRECORD01 APP

Percent new IX = 0.0306%

Result key: 8
Scenario 4 Affected station 3
Before Analysis

Results for: 19A MA BOSTON DTVPLN DTVP0683 PLN
HAAT 374.0 m, ATV ERP 700.0 kW

| | POPULATION | AREA (sq km) |
|--------------------------------|------------|--------------|
| within Noise Limited Contour | 7476947 | 34159.8 |
| not affected by terrain losses | 7350932 | 32676.0 |
| lost to NTSC IX | 0 | 0.0 |
| lost to additional IX by ATV | 18018 | 177.4 |
| lost to ATV IX only | 18018 | 177.4 |
| lost to all IX | 18018 | 177.4 |

Potential Interfering Stations Included in above Scenario 4

18A MA LAWRENCE DTVPLN DTVP0641 PLN
19A ME BANGOR DTVPLN DTVP0684 PLN
20A CT WATERBURY DTVPLN DTVP0721 PLN

After Analysis

Results for: 19A MA BOSTON DTVPLN DTVP0683 PLN
HAAT 374.0 m, ATV ERP 700.0 kW

| | POPULATION | AREA (sq km) |
|--------------------------------|------------|--------------|
| within Noise Limited Contour | 7476947 | 34159.8 |
| not affected by terrain losses | 7350932 | 32676.0 |
| lost to NTSC IX | 0 | 0.0 |
| lost to additional IX by ATV | 20266 | 205.6 |
| lost to ATV IX only | 20266 | 205.6 |
| lost to all IX | 20266 | 205.6 |

Potential Interfering Stations Included in above Scenario 4

18A MA LAWRENCE DTVPLN DTVP0641 PLN
19A ME BANGOR DTVPLN DTVP0684 PLN
20A CT WATERBURY USERRECORD01 APP

Percent new IX = 0.0307%

Worst case new IX 0.0307% Scenario 4

#####

Analysis of Interference to Affected Station 4

Analysis of current record
Channel Call City/State Application Ref. No.
20 WCVB-TV BOSTON MA BLCDDT -20020102AAH

Figure 3

Stations Potentially Affecting This Station

| Chan | Call | City/State | Dist(km) | Status | Application Ref. No. |
|------|---------|---------------|----------|--------|----------------------|
| 19 | WGBH-TV | BOSTON MA | 0.0 | LIC | BLEDT -20021219AAM |
| 19 | WGBH-TV | BOSTON MA | 0.0 | PLN | DTVPLN -DTVP0683 |
| 20 | WTXX | WATERBURY CT | 148.0 | PLN | DTVPLN -DTVP0721 |
| 21 | WSBE-TV | PROVIDENCE RI | 49.7 | LIC | BLEDT -20050307ACR |
| 21 | WSBE-TV | PROVIDENCE RI | 49.7 | PLN | DTVPLN -DTVP0780 |
| 20 | WTXX | WATERBURY CT | 148.0 | APP | USERRECORD-01 |

Total scenarios = 2

Result key: 9

Scenario 1 Affected station 4

Before Analysis

Results for: 20A MA BOSTON BLCDDT 20020102AAH LIC

HAAT 390.0 m, ATV ERP 625.0 kW

| | POPULATION | AREA (sq km) |
|--------------------------------|------------|--------------|
| within Noise Limited Contour | 7481026 | 34228.4 |
| not affected by terrain losses | 7356719 | 32684.1 |
| lost to NTSC IX | 0 | 0.0 |
| lost to additional IX by ATV | 130967 | 1737.8 |
| lost to ATV IX only | 130967 | 1737.8 |
| lost to all IX | 130967 | 1737.8 |

Potential Interfering Stations Included in above Scenario 1

| 21A RI PROVIDENCE | BLEDT | 20050307ACR | LIC |
|-------------------|--------|-------------|-----|
| 20A CT WATERBURY | DTVPLN | DTVP0721 | PLN |

After Analysis

Results for: 20A MA BOSTON BLCDDT 20020102AAH LIC

HAAT 390.0 m, ATV ERP 625.0 kW

| | POPULATION | AREA (sq km) |
|--------------------------------|------------|--------------|
| within Noise Limited Contour | 7481026 | 34228.4 |
| not affected by terrain losses | 7356719 | 32684.1 |
| lost to NTSC IX | 0 | 0.0 |
| lost to additional IX by ATV | 155186 | 2217.6 |
| lost to ATV IX only | 155186 | 2217.6 |
| lost to all IX | 155186 | 2217.6 |

Potential Interfering Stations Included in above Scenario 1

| 21A RI PROVIDENCE | BLEDT | 20050307ACR | LIC |
|--|-------------------------------------|-------------|-----|
| 20A CT WATERBURY <td>USERRECORD01 <td></td> <td>APP</td> </td> | USERRECORD01 <td></td> <td>APP</td> | | APP |

Percent new IX = 0.3352%

Result key: 10

Scenario 2 Affected station 4

Before Analysis

Results for: 20A MA BOSTON BLCDDT 20020102AAH LIC

Figure 3

HAAT 390.0 m, ATV ERP 625.0 kW

| | POPULATION | AREA (sq km) |
|--------------------------------|------------|--------------|
| within Noise Limited Contour | 7481026 | 34228.4 |
| not affected by terrain losses | 7356719 | 32684.1 |
| lost to NTSC IX | 0 | 0.0 |
| lost to additional IX by ATV | 130967 | 1737.8 |
| lost to ATV IX only | 130967 | 1737.8 |
| lost to all IX | 130967 | 1737.8 |

Potential Interfering Stations Included in above Scenario 2

| 21A RI PROVIDENCE | DTVPLN | DTVP0780 | PLN |
|-------------------|--------|----------|-----|
| 20A CT WATERBURY | DTVPLN | DTVP0721 | PLN |

After Analysis

Results for: 20A MA BOSTON BLCDDT 20020102AAH LIC

HAAT 390.0 m, ATV ERP 625.0 kW

| | POPULATION | AREA (sq km) |
|--------------------------------|------------|--------------|
| within Noise Limited Contour | 7481026 | 34228.4 |
| not affected by terrain losses | 7356719 | 32684.1 |
| lost to NTSC IX | 0 | 0.0 |
| lost to additional IX by ATV | 155186 | 2217.6 |
| lost to ATV IX only | 155186 | 2217.6 |
| lost to all IX | 155186 | 2217.6 |

Potential Interfering Stations Included in above Scenario 2

| 21A RI PROVIDENCE | DTVPLN | DTVP0780 | PLN |
|--|-------------------------------------|----------|-----|
| 20A CT WATERBURY <td>USERRECORD01 <td></td> <td>APP</td> </td> | USERRECORD01 <td></td> <td>APP</td> | | APP |

Percent new IX = 0.3352%

Worst case new IX 0.3352% Scenario 1

#####

Analysis of Interference to Affected Station 5

Analysis of current record

| Channel | Call | City/State | Application Ref. No. |
|---------|---------|------------|----------------------|
| 20 | WCVB-TV | BOSTON MA | DTVPLN -DTVP0727 |

Stations Potentially Affecting This Station

| Chan | Call | City/State | Dist(km) | Status | Application Ref. No. |
|------|---------|---------------|----------|--------|----------------------|
| 19 | WGBH-TV | BOSTON MA | 0.0 | LIC | BLEDT -20021219AAM |
| 19 | WGBH-TV | BOSTON MA | 0.0 | PLN | DTVPLN -DTVP0683 |
| 20 | WTXX | WATERBURY CT | 148.0 | PLN | DTVPLN -DTVP0721 |
| 21 | WSBE-TV | PROVIDENCE RI | 49.7 | LIC | BLEDT -20050307ACR |
| 21 | WSBE-TV | PROVIDENCE RI | 49.7 | PLN | DTVPLN -DTVP0780 |
| 20 | WTXX | WATERBURY CT | 148.0 | APP | USERRECORD-01 |

Total scenarios = 2

Figure 3

Result key: 11
 Scenario 1 Affected station 5
 Before Analysis

Results for: 20A MA BOSTON DTVPLN DTVP0727 PLN
 HAAT 390.0 m, ATV ERP 625.0 kW

| | POPULATION | AREA (sq km) |
|--------------------------------|------------|--------------|
| within Noise Limited Contour | 7481026 | 34228.4 |
| not affected by terrain losses | 7356719 | 32684.1 |
| lost to NTSC IX | 0 | 0.0 |
| lost to additional IX by ATV | 130967 | 1737.8 |
| lost to ATV IX only | 130967 | 1737.8 |
| lost to all IX | 130967 | 1737.8 |

Potential Interfering Stations Included in above Scenario 1

| | | | |
|-------------------|--------|-------------|-----|
| 21A RI PROVIDENCE | BLEDT | 20050307ACR | LIC |
| 20A CT WATERBURY | DTVPLN | DTVP0721 | PLN |

After Analysis

Results for: 20A MA BOSTON DTVPLN DTVP0727 PLN
 HAAT 390.0 m, ATV ERP 625.0 kW

| | POPULATION | AREA (sq km) |
|--------------------------------|------------|--------------|
| within Noise Limited Contour | 7481026 | 34228.4 |
| not affected by terrain losses | 7356719 | 32684.1 |
| lost to NTSC IX | 0 | 0.0 |
| lost to additional IX by ATV | 155186 | 2217.6 |
| lost to ATV IX only | 155186 | 2217.6 |
| lost to all IX | 155186 | 2217.6 |

Potential Interfering Stations Included in above Scenario 1

| | | | |
|-------------------|--------------|-------------|-----|
| 21A RI PROVIDENCE | BLEDT | 20050307ACR | LIC |
| 20A CT WATERBURY | USERRECORD01 | | APP |

Percent new IX = 0.3352%

Result key: 12
 Scenario 2 Affected station 5
 Before Analysis

Results for: 20A MA BOSTON DTVPLN DTVP0727 PLN
 HAAT 390.0 m, ATV ERP 625.0 kW

| | POPULATION | AREA (sq km) |
|--------------------------------|------------|--------------|
| within Noise Limited Contour | 7481026 | 34228.4 |
| not affected by terrain losses | 7356719 | 32684.1 |
| lost to NTSC IX | 0 | 0.0 |
| lost to additional IX by ATV | 130967 | 1737.8 |
| lost to ATV IX only | 130967 | 1737.8 |
| lost to all IX | 130967 | 1737.8 |

Potential Interfering Stations Included in above Scenario 2

| | | | |
|-------------------|--------|----------|-----|
| 21A RI PROVIDENCE | DTVPLN | DTVP0780 | PLN |
| 20A CT WATERBURY | DTVPLN | DTVP0721 | PLN |

Figure 3

After Analysis

Results for: 20A MA BOSTON DTVPLN DTVP0727 PLN
 HAAT 390.0 m, ATV ERP 625.0 kW

| | POPULATION | AREA (sq km) |
|--------------------------------|------------|--------------|
| within Noise Limited Contour | 7481026 | 34228.4 |
| not affected by terrain losses | 7356719 | 32684.1 |
| lost to NTSC IX | 0 | 0.0 |
| lost to additional IX by ATV | 155186 | 2217.6 |
| lost to ATV IX only | 155186 | 2217.6 |
| lost to all IX | 155186 | 2217.6 |

Potential Interfering Stations Included in above Scenario 2

| | | | |
|-------------------|--------------|----------|-----|
| 21A RI PROVIDENCE | DTVPLN | DTVP0780 | PLN |
| 20A CT WATERBURY | USERRECORD01 | | APP |

Percent new IX = 0.3352%

Worst case new IX 0.3352% Scenario 1

#####

Analysis of Interference to Affected Station 6

Analysis of current record

| Channel | Call | City/State | Application Ref. No. |
|---------|---------|---------------|----------------------|
| 20 | WBGH-CA | BINGHAMTON NY | BLTTA -20050505AAV |

Stations Potentially Affecting This Station

| Chan | Call | City/State | Dist(km) | Status | Application Ref. No. |
|------|---------|---------------|----------|--------|----------------------|
| 17 | WSYR-TV | SYRACUSE NY | 98.5 | LIC | BLCDT -20030812ABK |
| 17 | WSYR-TV | SYRACUSE NY | 98.5 | PLN | DTVPLN -DTVP0611 |
| 18 | WETM-TV | ELMIRA NY | 76.7 | PLN | DTVPLN -DTVP0647 |
| 18 | WETM-TV | ELMIRA NY | 76.7 | CP | BPCDT -20080307ACV |
| 19 | WSYT | SYRACUSE NY | 93.5 | LIC | BLCDT -20050705AAM |
| 19 | WSYT | SYRACUSE NY | 93.5 | PLN | DTVPLN -DTVP0696 |
| 20 | WTXX | WATERBURY CT | 249.8 | LIC | BLCT -19820428KE |
| 20 | WTXX | WATERBURY CT | 260.5 | PLN | DTVPLN -DTVP0721 |
| 20 | WTXX | WATERBURY CT | 260.5 | CP | BPCDT -20080328AIO |
| 20 | WDCA | WASHINGTON DC | 358.3 | CP | BMXPCT -20060519ACH |
| 20 | WCVB-TV | BOSTON MA | 388.5 | LIC | BLCDT -20020102AAH |
| 20 | WCVB-TV | BOSTON MA | 388.5 | PLN | DTVPLN -DTVP0727 |
| 20 | W20BL | BATH NY | 108.8 | LIC | BLTTL -19961015JG |
| 20 | WNYI | ITHACA NY | 61.2 | CP | BPCDT -20080331AEE |
| 20 | WNYI | ITHACA NY | 61.2 | PLN | DTVPLN -DTVP0737 |
| 20 | W20BT | ITHACA NY | 76.8 | LIC | BLTTL -19990809JL |
| 20 | WUTR | UTICA NY | 135.9 | APP | BSTA -20070110ACH |
| 20 | WUTR | UTICA NY | 135.9 | LIC | BLCT -20050825ABH |
| 20 | WUTR | UTICA NY | 135.9 | APP | BSTA -20080602AUN |
| 24 | WSTM-TV | SYRACUSE NY | 99.3 | PLN | DTVPLN -DTVP0896 |
| 24 | WSTM-TV | SYRACUSE NY | 99.3 | CP | BPCDT -20080320ACI |
| 27 | WFXV | UTICA NY | 116.0 | APP | BMPCDT -20080114ABF |

Figure 3

```

27 WFXV UTICA NY 115.9 PLN DTVPLN -DTVP1012
27 WFXV UTICA NY 115.9 CP BPCDT -19991029AIE
34 WIVT BINGHAMTON NY 0.0 LIC BLCT -20040113ABJ
34 WIVT BINGHAMTON NY 0.0 PLN DTVPLN -DTVP1263
34 WIVT BINGHAMTON NY 0.0 CP BPCDT -20080314ACR
20 WTXX WATERBURY CT 260.5 APP USERRECORD-01
Proposal causes no interference

```

#####

Analysis of Interference to Affected Station 7

Analysis of current record

| Channel | Call | City/State | Application Ref. No. |
|---------|------|------------|----------------------|
| 20 | WNYI | ITHACA NY | BPCDT -20080331AEE |

Stations Potentially Affecting This Station

| Chan | Call | City/State | Dist(km) | Status | Application Ref. No. |
|------|---------|---------------|----------|--------|----------------------|
| 19 | WSYT | SYRACUSE NY | 55.7 | LIC | BLCDDT -20050705AAM |
| 19 | WSYT | SYRACUSE NY | 55.7 | PLN | DTVPLN -DTVP0696 |
| 20 | WTXX | WATERBURY CT | 312.9 | PLN | DTVPLN -DTVP0721 |
| 20 | WFMJ-TV | YOUNGSTOWN OH | 374.8 | CP | BPCDDT -19991027AAV |
| 20 | WFMJ-TV | YOUNGSTOWN OH | 374.8 | PLN | DTVPLN -DTVP0738 |
| 21 | WWTI | WATERTOWN NY | 173.1 | LIC | BLCDDT -20040128AFQ |
| 21 | WWTI | WATERTOWN NY | 173.1 | PLN | DTVPLN -DTVP0775 |
| 20 | WTXX | WATERBURY CT | 312.9 | APP | USERRECORD-01 |

Proposal causes no interference

#####

Analysis of Interference to Affected Station 8

Analysis of current record

| Channel | Call | City/State | Application Ref. No. |
|---------|------|------------|----------------------|
| 20 | WNYI | ITHACA NY | DTVPLN -DTVP0737 |

Stations Potentially Affecting This Station

| Chan | Call | City/State | Dist(km) | Status | Application Ref. No. |
|------|---------|---------------|----------|--------|----------------------|
| 19 | WSYT | SYRACUSE NY | 55.7 | LIC | BLCDDT -20050705AAM |
| 19 | WSYT | SYRACUSE NY | 55.7 | PLN | DTVPLN -DTVP0696 |
| 20 | WTXX | WATERBURY CT | 312.9 | PLN | DTVPLN -DTVP0721 |
| 20 | WFMJ-TV | YOUNGSTOWN OH | 374.8 | CP | BPCDDT -19991027AAV |
| 20 | WFMJ-TV | YOUNGSTOWN OH | 374.8 | PLN | DTVPLN -DTVP0738 |
| 21 | WWTI | WATERTOWN NY | 173.1 | LIC | BLCDDT -20040128AFQ |
| 21 | WWTI | WATERTOWN NY | 173.1 | PLN | DTVPLN -DTVP0775 |
| 20 | WTXX | WATERBURY CT | 312.9 | APP | USERRECORD-01 |

Proposal causes no interference

#####

Figure 3

Analysis of Interference to Affected Station 9

Analysis of current record

| Channel | Call | City/State | Application Ref. No. |
|---------|------|----------------|----------------------|
| 21 | WLIW | GARDEN CITY NY | BPEDT -20080317AAQ |

Stations Potentially Affecting This Station

| Chan | Call | City/State | Dist(km) | Status | Application Ref. No. |
|------|---------|----------------|----------|--------|----------------------|
| 20 | WTXX | WATERBURY CT | 114.1 | PLN | DTVPLN -DTVP0721 |
| 21 | WBOC-TV | SALISBURY MD | 315.6 | LIC | BLCDDT -20060703ABR |
| 21 | WBOC-TV | SALISBURY MD | 315.6 | PLN | DTVPLN -DTVP0767 |
| 21 | WWTI | WATERTOWN NY | 390.8 | LIC | BLCDDT -20040128AFQ |
| 21 | WWTI | WATERTOWN NY | 390.8 | PLN | DTVPLN -DTVP0775 |
| 21 | WHP-TV | HARRISBURG PA | 292.6 | PLN | DTVPLN -DTVP0778 |
| 21 | WHP-TV | HARRISBURG PA | 292.6 | CP MOD | BMPCCDT -20080606AEJ |
| 21 | WSBE-TV | PROVIDENCE RI | 216.7 | LIC | BLEDT -20050307ACR |
| 21 | WSBE-TV | PROVIDENCE RI | 216.7 | PLN | DTVPLN -DTVP0780 |
| 22 | WGBY-TV | SPRINGFIELD MA | 174.8 | PLN | DTVPLN -DTVP0807 |
| 22 | WGBY-TV | SPRINGFIELD MA | 174.8 | CP | BPEDT -20080507ACW |
| 22 | WNJS | CAMDEN NJ | 166.8 | LIC | BLEDT -20070611AAY |
| 22 | WNJS | CAMDEN NJ | 166.8 | PLN | DTVPLN -DTVP0816 |
| 20 | WTXX | WATERBURY CT | 114.1 | APP | USERRECORD-01 |

Total scenarios = 8

Result key: 13

Scenario 1 Affected station 9
Before Analysis

Results for: 21A NY GARDEN CITY BPEDT 20080317AAQ CP
HAAT 111.0 m, ATV ERP 89.9 kW

| | POPULATION | AREA (sq km) |
|--------------------------------|------------|--------------|
| within Noise Limited Contour | 13751563 | 11064.1 |
| not affected by terrain losses | 13637028 | 10930.9 |
| lost to NTSC IX | 0 | 0.0 |
| lost to additional IX by ATV | 84229 | 48.4 |
| lost to ATV IX only | 84229 | 48.4 |
| lost to all IX | 84229 | 48.4 |

Potential Interfering Stations Included in above Scenario 1

| | | | |
|-------------------|--------|-------------|-----|
| 21A MD SALISBURY | BLCDDT | 20060703ABR | LIC |
| 21A PA HARRISBURG | DTVPLN | DTVP0778 | PLN |
| 21A RI PROVIDENCE | BLEDT | 20050307ACR | LIC |

After Analysis

Results for: 21A NY GARDEN CITY BPEDT 20080317AAQ CP
HAAT 111.0 m, ATV ERP 89.9 kW

| | POPULATION | AREA (sq km) |
|--------------------------------|------------|--------------|
| within Noise Limited Contour | 13751563 | 11064.1 |
| not affected by terrain losses | 13637028 | 10930.9 |
| lost to NTSC IX | 0 | 0.0 |
| lost to additional IX by ATV | 84488 | 64.6 |

Figure 3

| | | |
|---------------------|-------|------|
| lost to ATV IX only | 84488 | 64.6 |
| lost to all IX | 84488 | 64.6 |

Potential Interfering Stations Included in above Scenario 1

| | | | |
|-------------------|--------------|-------------|-----|
| 21A MD SALISBURY | BLCDT | 20060703ABR | LIC |
| 21A PA HARRISBURG | DTVPLN | DTVP0778 | PLN |
| 21A RI PROVIDENCE | BLEDT | 20050307ACR | LIC |
| 20A CT WATERBURY | USERRECORD01 | | APP |

Percent new IX = 0.0019%

Result key: 14
Scenario 2 Affected station 9
Before Analysis

Results for: 21A NY GARDEN CITY BPEDT 20080317AAQ CP

| | | |
|--------------------------------|------------|--------------|
| HAAT 111.0 m, ATV ERP 89.9 kW | POPULATION | AREA (sq km) |
| within Noise Limited Contour | 13751563 | 11064.1 |
| not affected by terrain losses | 13637028 | 10930.9 |
| lost to NTSC IX | 0 | 0.0 |
| lost to additional IX by ATV | 84229 | 48.4 |
| lost to ATV IX only | 84229 | 48.4 |
| lost to all IX | 84229 | 48.4 |

Potential Interfering Stations Included in above Scenario 2

| | | | |
|-------------------|--------|-------------|-----|
| 21A MD SALISBURY | BLCDT | 20060703ABR | LIC |
| 21A PA HARRISBURG | DTVPLN | DTVP0778 | PLN |
| 21A RI PROVIDENCE | DTVPLN | DTVP0780 | PLN |

After Analysis

Results for: 21A NY GARDEN CITY BPEDT 20080317AAQ CP

| | | |
|--------------------------------|------------|--------------|
| HAAT 111.0 m, ATV ERP 89.9 kW | POPULATION | AREA (sq km) |
| within Noise Limited Contour | 13751563 | 11064.1 |
| not affected by terrain losses | 13637028 | 10930.9 |
| lost to NTSC IX | 0 | 0.0 |
| lost to additional IX by ATV | 84488 | 64.6 |
| lost to ATV IX only | 84488 | 64.6 |
| lost to all IX | 84488 | 64.6 |

Potential Interfering Stations Included in above Scenario 2

| | | | |
|-------------------|--------------|-------------|-----|
| 21A MD SALISBURY | BLCDT | 20060703ABR | LIC |
| 21A PA HARRISBURG | DTVPLN | DTVP0778 | PLN |
| 21A RI PROVIDENCE | DTVPLN | DTVP0780 | PLN |
| 20A CT WATERBURY | USERRECORD01 | | APP |

Percent new IX = 0.0019%

Result key: 15
Scenario 3 Affected station 9
Before Analysis

Figure 3

Results for: 21A NY GARDEN CITY BPEDT 20080317AAQ CP

| | | |
|--------------------------------|------------|--------------|
| HAAT 111.0 m, ATV ERP 89.9 kW | POPULATION | AREA (sq km) |
| within Noise Limited Contour | 13751563 | 11064.1 |
| not affected by terrain losses | 13637028 | 10930.9 |
| lost to NTSC IX | 0 | 0.0 |
| lost to additional IX by ATV | 84229 | 48.4 |
| lost to ATV IX only | 84229 | 48.4 |
| lost to all IX | 84229 | 48.4 |

Potential Interfering Stations Included in above Scenario 3

| | | | |
|-------------------|--------|-------------|-----|
| 21A MD SALISBURY | BLCDT | 20060703ABR | LIC |
| 21A PA HARRISBURG | BMPCDT | 20080606AEJ | CP |
| 21A RI PROVIDENCE | BLEDT | 20050307ACR | LIC |

After Analysis

Results for: 21A NY GARDEN CITY BPEDT 20080317AAQ CP

| | | |
|--------------------------------|------------|--------------|
| HAAT 111.0 m, ATV ERP 89.9 kW | POPULATION | AREA (sq km) |
| within Noise Limited Contour | 13751563 | 11064.1 |
| not affected by terrain losses | 13637028 | 10930.9 |
| lost to NTSC IX | 0 | 0.0 |
| lost to additional IX by ATV | 84488 | 64.6 |
| lost to ATV IX only | 84488 | 64.6 |
| lost to all IX | 84488 | 64.6 |

Potential Interfering Stations Included in above Scenario 3

| | | | |
|-------------------|--------------|-------------|-----|
| 21A MD SALISBURY | BLCDT | 20060703ABR | LIC |
| 21A PA HARRISBURG | BMPCDT | 20080606AEJ | CP |
| 21A RI PROVIDENCE | BLEDT | 20050307ACR | LIC |
| 20A CT WATERBURY | USERRECORD01 | | APP |

Percent new IX = 0.0019%

Result key: 16
Scenario 4 Affected station 9
Before Analysis

Results for: 21A NY GARDEN CITY BPEDT 20080317AAQ CP

| | | |
|--------------------------------|------------|--------------|
| HAAT 111.0 m, ATV ERP 89.9 kW | POPULATION | AREA (sq km) |
| within Noise Limited Contour | 13751563 | 11064.1 |
| not affected by terrain losses | 13637028 | 10930.9 |
| lost to NTSC IX | 0 | 0.0 |
| lost to additional IX by ATV | 84229 | 48.4 |
| lost to ATV IX only | 84229 | 48.4 |
| lost to all IX | 84229 | 48.4 |

Potential Interfering Stations Included in above Scenario 4

| | | | |
|-------------------|--------|-------------|-----|
| 21A MD SALISBURY | BLCDT | 20060703ABR | LIC |
| 21A PA HARRISBURG | BMPCDT | 20080606AEJ | CP |
| 21A RI PROVIDENCE | DTVPLN | DTVP0780 | PLN |

Figure 3

After Analysis

Results for: 21A NY GARDEN CITY BPEDT 20080317AAQ CP
 HAAT 111.0 m, ATV ERP 89.9 kW

| | POPULATION | AREA (sq km) |
|--------------------------------|------------|--------------|
| within Noise Limited Contour | 13751563 | 11064.1 |
| not affected by terrain losses | 13637028 | 10930.9 |
| lost to NTSC IX | 0 | 0.0 |
| lost to additional IX by ATV | 84488 | 64.6 |
| lost to ATV IX only | 84488 | 64.6 |
| lost to all IX | 84488 | 64.6 |

Potential Interfering Stations Included in above Scenario 4

| | | | |
|-------------------|--------------|-------------|-----|
| 21A MD SALISBURY | BLCDT | 20060703ABR | LIC |
| 21A PA HARRISBURG | BMPCDT | 20080606AEJ | CP |
| 21A RI PROVIDENCE | DTVPLN | DTVP0780 | PLN |
| 20A CT WATERBURY | USERRECORD01 | | APP |

Percent new IX = 0.0019%

Result key: 17
 Scenario 5 Affected station 9
 Before Analysis

Results for: 21A NY GARDEN CITY BPEDT 20080317AAQ CP
 HAAT 111.0 m, ATV ERP 89.9 kW

| | POPULATION | AREA (sq km) |
|--------------------------------|------------|--------------|
| within Noise Limited Contour | 13751563 | 11064.1 |
| not affected by terrain losses | 13637028 | 10930.9 |
| lost to NTSC IX | 0 | 0.0 |
| lost to additional IX by ATV | 84229 | 48.4 |
| lost to ATV IX only | 84229 | 48.4 |
| lost to all IX | 84229 | 48.4 |

Potential Interfering Stations Included in above Scenario 5

| | | | |
|-------------------|--------|-------------|-----|
| 21A MD SALISBURY | DTVPLN | DTVP0767 | PLN |
| 21A PA HARRISBURG | DTVPLN | DTVP0778 | PLN |
| 21A RI PROVIDENCE | BLEDT | 20050307ACR | LIC |

After Analysis

Results for: 21A NY GARDEN CITY BPEDT 20080317AAQ CP
 HAAT 111.0 m, ATV ERP 89.9 kW

| | POPULATION | AREA (sq km) |
|--------------------------------|------------|--------------|
| within Noise Limited Contour | 13751563 | 11064.1 |
| not affected by terrain losses | 13637028 | 10930.9 |
| lost to NTSC IX | 0 | 0.0 |
| lost to additional IX by ATV | 84488 | 64.6 |
| lost to ATV IX only | 84488 | 64.6 |
| lost to all IX | 84488 | 64.6 |

Potential Interfering Stations Included in above Scenario 5

| | | | |
|-------------------|--------|----------|-----|
| 21A MD SALISBURY | DTVPLN | DTVP0767 | PLN |
| 21A PA HARRISBURG | DTVPLN | DTVP0778 | PLN |

Figure 3

| | | | |
|-------------------|--------------|-------------|-----|
| 21A RI PROVIDENCE | BLEDT | 20050307ACR | LIC |
| 20A CT WATERBURY | USERRECORD01 | | APP |

Percent new IX = 0.0019%

Result key: 18
 Scenario 6 Affected station 9
 Before Analysis

Results for: 21A NY GARDEN CITY BPEDT 20080317AAQ CP
 HAAT 111.0 m, ATV ERP 89.9 kW

| | POPULATION | AREA (sq km) |
|--------------------------------|------------|--------------|
| within Noise Limited Contour | 13751563 | 11064.1 |
| not affected by terrain losses | 13637028 | 10930.9 |
| lost to NTSC IX | 0 | 0.0 |
| lost to additional IX by ATV | 84229 | 48.4 |
| lost to ATV IX only | 84229 | 48.4 |
| lost to all IX | 84229 | 48.4 |

Potential Interfering Stations Included in above Scenario 6

| | | | |
|-------------------|--------|----------|-----|
| 21A MD SALISBURY | DTVPLN | DTVP0767 | PLN |
| 21A PA HARRISBURG | DTVPLN | DTVP0778 | PLN |
| 21A RI PROVIDENCE | DTVPLN | DTVP0780 | PLN |

After Analysis

Results for: 21A NY GARDEN CITY BPEDT 20080317AAQ CP
 HAAT 111.0 m, ATV ERP 89.9 kW

| | POPULATION | AREA (sq km) |
|--------------------------------|------------|--------------|
| within Noise Limited Contour | 13751563 | 11064.1 |
| not affected by terrain losses | 13637028 | 10930.9 |
| lost to NTSC IX | 0 | 0.0 |
| lost to additional IX by ATV | 84488 | 64.6 |
| lost to ATV IX only | 84488 | 64.6 |
| lost to all IX | 84488 | 64.6 |

Potential Interfering Stations Included in above Scenario 6

| | | | |
|-------------------|--------------|----------|-----|
| 21A MD SALISBURY | DTVPLN | DTVP0767 | PLN |
| 21A PA HARRISBURG | DTVPLN | DTVP0778 | PLN |
| 21A RI PROVIDENCE | DTVPLN | DTVP0780 | PLN |
| 20A CT WATERBURY | USERRECORD01 | | APP |

Percent new IX = 0.0019%

Result key: 19
 Scenario 7 Affected station 9
 Before Analysis

Results for: 21A NY GARDEN CITY BPEDT 20080317AAQ CP
 HAAT 111.0 m, ATV ERP 89.9 kW

| | POPULATION | AREA (sq km) |
|--------------------------------|------------|--------------|
| within Noise Limited Contour | 13751563 | 11064.1 |
| not affected by terrain losses | 13637028 | 10930.9 |
| lost to NTSC IX | 0 | 0.0 |
| lost to additional IX by ATV | 84229 | 48.4 |

Figure 3

```

lost to ATV IX only          84229      48.4
lost to all IX               84229      48.4

Potential Interfering Stations Included in above Scenario      7

21A MD SALISBURY      DTVPLN      DTVP0767      PLN
21A PA HARRISBURG      BMPCDT      20080606AEJ      CP
21A RI PROVIDENCE      BLEDT      20050307ACR      LIC

After Analysis

Results for: 21A NY GARDEN CITY      BPEDT      20080317AAQ      CP
HAAT 111.0 m, ATV ERP 89.9 kW
      POPULATION      AREA (sq km)
within Noise Limited Contour      13751563      11064.1
not affected by terrain losses      13637028      10930.9
lost to NTSC IX              0              0.0
lost to additional IX by ATV      84488      64.6
lost to ATV IX only          84488      64.6
lost to all IX               84488      64.6

Potential Interfering Stations Included in above Scenario      7

21A MD SALISBURY      DTVPLN      DTVP0767      PLN
21A PA HARRISBURG      BMPCDT      20080606AEJ      CP
21A RI PROVIDENCE      BLEDT      20050307ACR      LIC
20A CT WATERBURY      USERRECORD01      APP

Percent new IX =      0.0019%

Result key:      20
Scenario      8 Affected station      9
Before Analysis

Results for: 21A NY GARDEN CITY      BPEDT      20080317AAQ      CP
HAAT 111.0 m, ATV ERP 89.9 kW
      POPULATION      AREA (sq km)
within Noise Limited Contour      13751563      11064.1
not affected by terrain losses      13637028      10930.9
lost to NTSC IX              0              0.0
lost to additional IX by ATV      84229      48.4
lost to ATV IX only          84229      48.4
lost to all IX               84229      48.4

Potential Interfering Stations Included in above Scenario      8

21A MD SALISBURY      DTVPLN      DTVP0767      PLN
21A PA HARRISBURG      BMPCDT      20080606AEJ      CP
21A RI PROVIDENCE      DTVPLN      DTVP0780      PLN

After Analysis

Results for: 21A NY GARDEN CITY      BPEDT      20080317AAQ      CP
HAAT 111.0 m, ATV ERP 89.9 kW
      POPULATION      AREA (sq km)
within Noise Limited Contour      13751563      11064.1
not affected by terrain losses      13637028      10930.9

```

Figure 3

```

lost to NTSC IX              0              0.0
lost to additional IX by ATV      84488      64.6
lost to ATV IX only          84488      64.6
lost to all IX               84488      64.6

Potential Interfering Stations Included in above Scenario      8

21A MD SALISBURY      DTVPLN      DTVP0767      PLN
21A PA HARRISBURG      BMPCDT      20080606AEJ      CP
21A RI PROVIDENCE      DTVPLN      DTVP0780      PLN
20A CT WATERBURY      USERRECORD01      APP

Percent new IX =      0.0019%

Worst case new IX      0.0019% Scenario      1

#####

Analysis of Interference to Affected Station 10

Analysis of current record
Channel      Call      City/State      Application Ref. No.
21      WLIW      GARDEN CITY NY      DTVPLN      -DTV0774

Stations Potentially Affecting This Station

Chan      Call      City/State      Dist(km)      Status      Application Ref. No.
20      WTXX      WATERBURY CT      114.1      PLN      DTVPLN      -DTV0721
21      WBOC-TV      SALISBURY MD      315.6      LIC      BLCDT      -20060703ABR
21      WBOC-TV      SALISBURY MD      315.6      PLN      DTVPLN      -DTV0767
21      WWTI      WATERTOWN NY      390.8      LIC      BLCDT      -20040128AFQ
21      WWTI      WATERTOWN NY      390.8      PLN      DTVPLN      -DTV0775
21      WHP-TV      HARRISBURG PA      292.6      PLN      DTVPLN      -DTV0778
21      WHP-TV      HARRISBURG PA      292.6      CP MOD      BMPCDT      -20080606AEJ
21      WSBE-TV      PROVIDENCE RI      216.7      LIC      BLEDT      -20050307ACR
21      WSBE-TV      PROVIDENCE RI      216.7      PLN      DTVPLN      -DTV0780
22      WGBY-TV      SPRINGFIELD MA      174.8      PLN      DTVPLN      -DTV0807
22      WGBY-TV      SPRINGFIELD MA      174.8      CP      BPEDT      -20080507ACW
22      WNJS      CAMDEN NJ      166.8      LIC      BLEDT      -20070611AAY
22      WNJS      CAMDEN NJ      166.8      PLN      DTVPLN      -DTV0816
20      WTXX      WATERBURY CT      114.1      APP      USERRECORD-01

Total scenarios =      8

Result key:      21
Scenario      1 Affected station      10
Before Analysis

Results for: 21A NY GARDEN CITY      DTVPLN      DTVP0774      PLN
HAAT 111.0 m, ATV ERP 89.9 kW
      POPULATION      AREA (sq km)
within Noise Limited Contour      13751563      11064.1
not affected by terrain losses      13637028      10930.9
lost to NTSC IX              0              0.0

```

Figure 3

| | | | |
|------------------------------|-------|------|--|
| lost to additional IX by ATV | 84229 | 48.4 | |
| lost to ATV IX only | 84229 | 48.4 | |
| lost to all IX | 84229 | 48.4 | |

Potential Interfering Stations Included in above Scenario 1

| | | | |
|-------------------|--------|-------------|-----|
| 21A MD SALISBURY | BLCDDT | 20060703ABR | LIC |
| 21A PA HARRISBURG | DTVPLN | DTVP0778 | PLN |
| 21A RI PROVIDENCE | BLEDT | 20050307ACR | LIC |

After Analysis

Results for: 21A NY GARDEN CITY DTVPLN DTVP0774 PLN

| | | |
|--------------------------------|------------|--------------|
| HAAT 111.0 m, ATV ERP 89.9 kW | | |
| | POPULATION | AREA (sq km) |
| within Noise Limited Contour | 13751563 | 11064.1 |
| not affected by terrain losses | 13637028 | 10930.9 |
| lost to NTSC IX | 0 | 0.0 |
| lost to additional IX by ATV | 84488 | 64.6 |
| lost to ATV IX only | 84488 | 64.6 |
| lost to all IX | 84488 | 64.6 |

Potential Interfering Stations Included in above Scenario 1

| | | | |
|-------------------|--------------|-------------|-----|
| 21A MD SALISBURY | BLCDDT | 20060703ABR | LIC |
| 21A PA HARRISBURG | DTVPLN | DTVP0778 | PLN |
| 21A RI PROVIDENCE | BLEDT | 20050307ACR | LIC |
| 20A CT WATERBURY | USERRECORD01 | | APP |

Percent new IX = 0.0019%

Result key: 22

Scenario 2 Affected station 10

Before Analysis

Results for: 21A NY GARDEN CITY DTVPLN DTVP0774 PLN

| | | |
|--------------------------------|------------|--------------|
| HAAT 111.0 m, ATV ERP 89.9 kW | | |
| | POPULATION | AREA (sq km) |
| within Noise Limited Contour | 13751563 | 11064.1 |
| not affected by terrain losses | 13637028 | 10930.9 |
| lost to NTSC IX | 0 | 0.0 |
| lost to additional IX by ATV | 84229 | 48.4 |
| lost to ATV IX only | 84229 | 48.4 |
| lost to all IX | 84229 | 48.4 |

Potential Interfering Stations Included in above Scenario 2

| | | | |
|-------------------|--------|-------------|-----|
| 21A MD SALISBURY | BLCDDT | 20060703ABR | LIC |
| 21A PA HARRISBURG | DTVPLN | DTVP0778 | PLN |
| 21A RI PROVIDENCE | DTVPLN | DTVP0780 | PLN |

After Analysis

Results for: 21A NY GARDEN CITY DTVPLN DTVP0774 PLN

| | | |
|-------------------------------|------------|--------------|
| HAAT 111.0 m, ATV ERP 89.9 kW | | |
| | POPULATION | AREA (sq km) |
| within Noise Limited Contour | 13751563 | 11064.1 |

Figure 3

| | | |
|--------------------------------|----------|---------|
| not affected by terrain losses | 13637028 | 10930.9 |
| lost to NTSC IX | 0 | 0.0 |
| lost to additional IX by ATV | 84488 | 64.6 |
| lost to ATV IX only | 84488 | 64.6 |
| lost to all IX | 84488 | 64.6 |

Potential Interfering Stations Included in above Scenario 2

| | | | |
|-------------------|--------------|-------------|-----|
| 21A MD SALISBURY | BLCDDT | 20060703ABR | LIC |
| 21A PA HARRISBURG | DTVPLN | DTVP0778 | PLN |
| 21A RI PROVIDENCE | DTVPLN | DTVP0780 | PLN |
| 20A CT WATERBURY | USERRECORD01 | | APP |

Percent new IX = 0.0019%

Result key: 23

Scenario 3 Affected station 10

Before Analysis

Results for: 21A NY GARDEN CITY DTVPLN DTVP0774 PLN

| | | |
|--------------------------------|------------|--------------|
| HAAT 111.0 m, ATV ERP 89.9 kW | | |
| | POPULATION | AREA (sq km) |
| within Noise Limited Contour | 13751563 | 11064.1 |
| not affected by terrain losses | 13637028 | 10930.9 |
| lost to NTSC IX | 0 | 0.0 |
| lost to additional IX by ATV | 84229 | 48.4 |
| lost to ATV IX only | 84229 | 48.4 |
| lost to all IX | 84229 | 48.4 |

Potential Interfering Stations Included in above Scenario 3

| | | | |
|-------------------|---------|-------------|-----|
| 21A MD SALISBURY | BLCDDT | 20060703ABR | LIC |
| 21A PA HARRISBURG | BMPCDDT | 20080606AEJ | CP |
| 21A RI PROVIDENCE | BLEDT | 20050307ACR | LIC |

After Analysis

Results for: 21A NY GARDEN CITY DTVPLN DTVP0774 PLN

| | | |
|--------------------------------|------------|--------------|
| HAAT 111.0 m, ATV ERP 89.9 kW | | |
| | POPULATION | AREA (sq km) |
| within Noise Limited Contour | 13751563 | 11064.1 |
| not affected by terrain losses | 13637028 | 10930.9 |
| lost to NTSC IX | 0 | 0.0 |
| lost to additional IX by ATV | 84488 | 64.6 |
| lost to ATV IX only | 84488 | 64.6 |
| lost to all IX | 84488 | 64.6 |

Potential Interfering Stations Included in above Scenario 3

| | | | |
|-------------------|--------------|-------------|-----|
| 21A MD SALISBURY | BLCDDT | 20060703ABR | LIC |
| 21A PA HARRISBURG | BMPCDDT | 20080606AEJ | CP |
| 21A RI PROVIDENCE | BLEDT | 20050307ACR | LIC |
| 20A CT WATERBURY | USERRECORD01 | | APP |

Percent new IX = 0.0019%

Result key: 24

Figure 3

Scenario 4 Affected station 10
Before Analysis

Results for: 21A NY GARDEN CITY DTVPLN DTVP0774 PLN
HAAT 111.0 m, ATV ERP 89.9 kW

| | POPULATION | AREA (sq km) |
|--------------------------------|------------|--------------|
| within Noise Limited Contour | 13751563 | 11064.1 |
| not affected by terrain losses | 13637028 | 10930.9 |
| lost to NTSC IX | 0 | 0.0 |
| lost to additional IX by ATV | 84229 | 48.4 |
| lost to ATV IX only | 84229 | 48.4 |
| lost to all IX | 84229 | 48.4 |

Potential Interfering Stations Included in above Scenario 4

| | | | |
|-------------------|--------|-------------|-----|
| 21A MD SALISBURY | BLCDT | 20060703ABR | LIC |
| 21A PA HARRISBURG | BMPCDT | 20080606AEJ | CP |
| 21A RI PROVIDENCE | DTVPLN | DTVP0780 | PLN |

After Analysis

Results for: 21A NY GARDEN CITY DTVPLN DTVP0774 PLN
HAAT 111.0 m, ATV ERP 89.9 kW

| | POPULATION | AREA (sq km) |
|--------------------------------|------------|--------------|
| within Noise Limited Contour | 13751563 | 11064.1 |
| not affected by terrain losses | 13637028 | 10930.9 |
| lost to NTSC IX | 0 | 0.0 |
| lost to additional IX by ATV | 84488 | 64.6 |
| lost to ATV IX only | 84488 | 64.6 |
| lost to all IX | 84488 | 64.6 |

Potential Interfering Stations Included in above Scenario 4

| | | | |
|-------------------|--------------|-------------|-----|
| 21A MD SALISBURY | BLCDT | 20060703ABR | LIC |
| 21A PA HARRISBURG | BMPCDT | 20080606AEJ | CP |
| 21A RI PROVIDENCE | DTVPLN | DTVP0780 | PLN |
| 20A CT WATERBURY | USERRECORD01 | | APP |

Percent new IX = 0.0019%

Result key: 25
Scenario 5 Affected station 10
Before Analysis

Results for: 21A NY GARDEN CITY DTVPLN DTVP0774 PLN
HAAT 111.0 m, ATV ERP 89.9 kW

| | POPULATION | AREA (sq km) |
|--------------------------------|------------|--------------|
| within Noise Limited Contour | 13751563 | 11064.1 |
| not affected by terrain losses | 13637028 | 10930.9 |
| lost to NTSC IX | 0 | 0.0 |
| lost to additional IX by ATV | 84229 | 48.4 |
| lost to ATV IX only | 84229 | 48.4 |
| lost to all IX | 84229 | 48.4 |

Potential Interfering Stations Included in above Scenario 5

| | | | |
|------------------|--------|----------|-----|
| 21A MD SALISBURY | DTVPLN | DTVP0767 | PLN |
|------------------|--------|----------|-----|

Figure 3

| | | | |
|-------------------|--------|-------------|-----|
| 21A PA HARRISBURG | DTVPLN | DTVP0778 | PLN |
| 21A RI PROVIDENCE | BLEDT | 20050307ACR | LIC |

After Analysis

Results for: 21A NY GARDEN CITY DTVPLN DTVP0774 PLN
HAAT 111.0 m, ATV ERP 89.9 kW

| | POPULATION | AREA (sq km) |
|--------------------------------|------------|--------------|
| within Noise Limited Contour | 13751563 | 11064.1 |
| not affected by terrain losses | 13637028 | 10930.9 |
| lost to NTSC IX | 0 | 0.0 |
| lost to additional IX by ATV | 84488 | 64.6 |
| lost to ATV IX only | 84488 | 64.6 |
| lost to all IX | 84488 | 64.6 |

Potential Interfering Stations Included in above Scenario 5

| | | | |
|-------------------|--------------|-------------|-----|
| 21A MD SALISBURY | DTVPLN | DTVP0767 | PLN |
| 21A PA HARRISBURG | DTVPLN | DTVP0778 | PLN |
| 21A RI PROVIDENCE | BLEDT | 20050307ACR | LIC |
| 20A CT WATERBURY | USERRECORD01 | | APP |

Percent new IX = 0.0019%

Result key: 26
Scenario 6 Affected station 10
Before Analysis

Results for: 21A NY GARDEN CITY DTVPLN DTVP0774 PLN
HAAT 111.0 m, ATV ERP 89.9 kW

| | POPULATION | AREA (sq km) |
|--------------------------------|------------|--------------|
| within Noise Limited Contour | 13751563 | 11064.1 |
| not affected by terrain losses | 13637028 | 10930.9 |
| lost to NTSC IX | 0 | 0.0 |
| lost to additional IX by ATV | 84229 | 48.4 |
| lost to ATV IX only | 84229 | 48.4 |
| lost to all IX | 84229 | 48.4 |

Potential Interfering Stations Included in above Scenario 6

| | | | |
|-------------------|--------|----------|-----|
| 21A MD SALISBURY | DTVPLN | DTVP0767 | PLN |
| 21A PA HARRISBURG | DTVPLN | DTVP0778 | PLN |
| 21A RI PROVIDENCE | DTVPLN | DTVP0780 | PLN |

After Analysis

Results for: 21A NY GARDEN CITY DTVPLN DTVP0774 PLN
HAAT 111.0 m, ATV ERP 89.9 kW

| | POPULATION | AREA (sq km) |
|--------------------------------|------------|--------------|
| within Noise Limited Contour | 13751563 | 11064.1 |
| not affected by terrain losses | 13637028 | 10930.9 |
| lost to NTSC IX | 0 | 0.0 |
| lost to additional IX by ATV | 84488 | 64.6 |
| lost to ATV IX only | 84488 | 64.6 |
| lost to all IX | 84488 | 64.6 |

Potential Interfering Stations Included in above Scenario 6

Figure 3

| | | | |
|-------------------|--------------|----------|-----|
| 21A MD SALISBURY | DTVPLN | DTVP0767 | PLN |
| 21A PA HARRISBURG | DTVPLN | DTVP0778 | PLN |
| 21A RI PROVIDENCE | DTVPLN | DTVP0780 | PLN |
| 20A CT WATERBURY | USERRECORD01 | | APP |

Percent new IX = 0.0019%

Result key: 27
 Scenario 7 Affected station 10
 Before Analysis

Results for: 21A NY GARDEN CITY DTVPLN DTVP0774 PLN
 HAAT 111.0 m, ATV ERP 89.9 kW

| | POPULATION | AREA (sq km) |
|--------------------------------|------------|--------------|
| within Noise Limited Contour | 13751563 | 11064.1 |
| not affected by terrain losses | 13637028 | 10930.9 |
| lost to NTSC IX | 0 | 0.0 |
| lost to additional IX by ATV | 84229 | 48.4 |
| lost to ATV IX only | 84229 | 48.4 |
| lost to all IX | 84229 | 48.4 |

Potential Interfering Stations Included in above Scenario 7

| | | | |
|-------------------|--------|-------------|-----|
| 21A MD SALISBURY | DTVPLN | DTVP0767 | PLN |
| 21A PA HARRISBURG | BMPCDT | 20080606AEJ | CP |
| 21A RI PROVIDENCE | BLEDT | 20050307ACR | LIC |

After Analysis

Results for: 21A NY GARDEN CITY DTVPLN DTVP0774 PLN
 HAAT 111.0 m, ATV ERP 89.9 kW

| | POPULATION | AREA (sq km) |
|--------------------------------|------------|--------------|
| within Noise Limited Contour | 13751563 | 11064.1 |
| not affected by terrain losses | 13637028 | 10930.9 |
| lost to NTSC IX | 0 | 0.0 |
| lost to additional IX by ATV | 84488 | 64.6 |
| lost to ATV IX only | 84488 | 64.6 |
| lost to all IX | 84488 | 64.6 |

Potential Interfering Stations Included in above Scenario 7

| | | | |
|-------------------|--------------|-------------|-----|
| 21A MD SALISBURY | DTVPLN | DTVP0767 | PLN |
| 21A PA HARRISBURG | BMPCDT | 20080606AEJ | CP |
| 21A RI PROVIDENCE | BLEDT | 20050307ACR | LIC |
| 20A CT WATERBURY | USERRECORD01 | | APP |

Percent new IX = 0.0019%

Result key: 28
 Scenario 8 Affected station 10
 Before Analysis

Results for: 21A NY GARDEN CITY DTVPLN DTVP0774 PLN
 HAAT 111.0 m, ATV ERP 89.9 kW

| | POPULATION | AREA (sq km) |
|------------------------------|------------|--------------|
| within Noise Limited Contour | 13751563 | 11064.1 |

Figure 3

| | | |
|--------------------------------|----------|---------|
| not affected by terrain losses | 13637028 | 10930.9 |
| lost to NTSC IX | 0 | 0.0 |
| lost to additional IX by ATV | 84229 | 48.4 |
| lost to ATV IX only | 84229 | 48.4 |
| lost to all IX | 84229 | 48.4 |

Potential Interfering Stations Included in above Scenario 8

| | | | |
|-------------------|--------|-------------|-----|
| 21A MD SALISBURY | DTVPLN | DTVP0767 | PLN |
| 21A PA HARRISBURG | BMPCDT | 20080606AEJ | CP |
| 21A RI PROVIDENCE | DTVPLN | DTVP0780 | PLN |

After Analysis

Results for: 21A NY GARDEN CITY DTVPLN DTVP0774 PLN
 HAAT 111.0 m, ATV ERP 89.9 kW

| | POPULATION | AREA (sq km) |
|--------------------------------|------------|--------------|
| within Noise Limited Contour | 13751563 | 11064.1 |
| not affected by terrain losses | 13637028 | 10930.9 |
| lost to NTSC IX | 0 | 0.0 |
| lost to additional IX by ATV | 84488 | 64.6 |
| lost to ATV IX only | 84488 | 64.6 |
| lost to all IX | 84488 | 64.6 |

Potential Interfering Stations Included in above Scenario 8

| | | | |
|-------------------|--------------|-------------|-----|
| 21A MD SALISBURY | DTVPLN | DTVP0767 | PLN |
| 21A PA HARRISBURG | BMPCDT | 20080606AEJ | CP |
| 21A RI PROVIDENCE | DTVPLN | DTVP0780 | PLN |
| 20A CT WATERBURY | USERRECORD01 | | APP |

Percent new IX = 0.0019%

Worst case new IX 0.0019% Scenario 1

#####

Analysis of Interference to Affected Station 11

Analysis of current record

| Channel | Call | City/State | Application Ref. No. |
|---------|---------|---------------|----------------------|
| 21 | WSBE-TV | PROVIDENCE RI | BLEDT -20050307ACR |

Stations Potentially Affecting This Station

| Chan | Call | City/State | Dist(km) | Status | Application Ref. No. |
|------|---------|----------------|----------|--------|----------------------|
| 20 | WTXX | WATERBURY CT | 129.3 | PLN | DTVPLN -DTVP0721 |
| 20 | WCVB-TV | BOSTON MA | 49.7 | LIC | BLCDDT -20020102AAH |
| 20 | WCVB-TV | BOSTON MA | 49.7 | PLN | DTVPLN -DTVP0727 |
| 21 | WLIW | GARDEN CITY NY | 216.7 | CP | BPEDT -20080317AAQ |
| 21 | WLIW | GARDEN CITY NY | 216.7 | PLN | DTVPLN -DTVP0774 |
| 21 | WWTI | WATERTOWN NY | 424.8 | LIC | BLCDDT -20040128AFQ |
| 21 | WWTI | WATERTOWN NY | 424.8 | PLN | DTVPLN -DTVP0775 |
| 22 | WLWC | NEW BEDFORD MA | 31.3 | LIC | BLCDDT -20050802ACS |
| 22 | WLWC | NEW BEDFORD MA | 31.3 | PLN | DTVPLN -DTVP0806 |

Figure 3

| | | | | | | |
|----|---------|----------------|-------|-----|---------------|--------------|
| 22 | WGBY-TV | SPRINGFIELD MA | 119.9 | PLN | DTVPLN | -DTVP0807 |
| 22 | WGBY-TV | SPRINGFIELD MA | 119.9 | CP | BPEDT | -20080507ACW |
| 20 | WTXX | WATERBURY CT | 129.3 | APP | USERRECORD-01 | |

Proposal causes no interference

#####

Analysis of Interference to Affected Station 12

Analysis of current record

| Channel | Call | City/State | Application Ref. No. |
|---------|---------|---------------|----------------------|
| 21 | WSBE-TV | PROVIDENCE RI | DTVPLN -DTVP0780 |

Stations Potentially Affecting This Station

| Chan | Call | City/State | Dist(km) | Status | Application Ref. No. |
|------|---------|----------------|----------|--------|----------------------|
| 20 | WTXX | WATERBURY CT | 129.3 | PLN | DTVPLN -DTVP0721 |
| 20 | WCVB-TV | BOSTON MA | 49.7 | LIC | BLCDDT -20020102AAH |
| 20 | WCVB-TV | BOSTON MA | 49.7 | PLN | DTVPLN -DTVP0727 |
| 21 | WLIW | GARDEN CITY NY | 216.7 | CP | BPEDT -20080317AAQ |
| 21 | WLIW | GARDEN CITY NY | 216.7 | PLN | DTVPLN -DTVP0774 |
| 21 | WWTI | WATERTOWN NY | 424.8 | LIC | BLCDDT -20040128AFQ |
| 21 | WWTI | WATERTOWN NY | 424.8 | PLN | DTVPLN -DTVP0775 |
| 22 | WLWC | NEW BEDFORD MA | 31.3 | LIC | BLCDDT -20050802ACS |
| 22 | WLWC | NEW BEDFORD MA | 31.3 | PLN | DTVPLN -DTVP0806 |
| 22 | WGBY-TV | SPRINGFIELD MA | 119.9 | PLN | DTVPLN -DTVP0807 |
| 22 | WGBY-TV | SPRINGFIELD MA | 119.9 | CP | BPEDT -20080507ACW |
| 20 | WTXX | WATERBURY CT | 129.3 | APP | USERRECORD-01 |

Proposal causes no interference

#####

Analysis of Interference to Affected Station 13

Analysis of current record

| Channel | Call | City/State | Application Ref. No. |
|---------|-------|---------------|----------------------|
| 28 | W28AJ | ALLINGTOWN CT | BLTTL -20010608AAO |

Stations Potentially Affecting This Station

| Chan | Call | City/State | Dist(km) | Status | Application Ref. No. |
|------|---------|-----------------|----------|--------|----------------------|
| 20 | WTXX | WATERBURY CT | 47.2 | PLN | DTVPLN -DTVP0721 |
| 20 | WTXX | WATERBURY CT | 47.2 | CP | BPCDDT -20080328AIO |
| 21 | WLIW | GARDEN CITY NY | 69.1 | CP | BPEDT -20080317AAQ |
| 21 | WLIW | GARDEN CITY NY | 69.1 | PLN | DTVPLN -DTVP0774 |
| 21 | WLIW | GARDEN CITY NY | 69.1 | LIC | BLET -20030416AAN |
| 24 | WNYE-TV | NEW YORK NY | 104.1 | CP MOD | BMPEDT -20070124AAX |
| 24 | WNYE-TV | NEW YORK NY | 104.1 | PLN | DTVPLN -DTVP0895 |
| 26 | WHPX | NEW LONDON CT | 65.7 | PLN | DTVPLN -DTVP0950 |
| 26 | WHPX | NEW LONDON CT | 65.7 | CP | BPCDDT -20080313ABQ |
| 27 | WTBY-TV | POUGHKEEPSIE NY | 84.7 | LIC | BMLCDDT -20061031ACG |
| 27 | WTBY-TV | POUGHKEEPSIE NY | 84.7 | PLN | DTVPLN -DTVP1011 |
| 28 | WLWC | NEW BEDFORD MA | 178.1 | LIC | BMLCCT -20031210ABA |

Figure 3

| | | | | | | |
|----|---------|-----------------|-------|--------|---------------|--------------|
| 28 | WFXQ-CA | SPRINGFIELD MA | 110.0 | LIC | BLTTA | -20060302ABV |
| 28 | WCPB | SALISBURY MD | 393.0 | LIC | BLET | -19950629KE |
| 28 | WCPB | SALISBURY MD | 393.0 | PLN | DTVPLN | -DTVP1042 |
| 28 | WNBC | NEW YORK NY | 104.6 | CP MOD | BMPCDT | -20080314ACO |
| 28 | WNBC | NEW YORK NY | 108.8 | PLN | DTVPLN | -DTVP1049 |
| 28 | WNBC | NEW YORK NY | 104.6 | STA | BDSTA | -20041220ADE |
| 28 | WBRE-TV | WILKES-BARRE PA | 242.7 | LIC | BLCT | -19891005KF |
| 28 | WVER | RUTLAND VT | 263.4 | LIC | BLET | -19930715KJ |
| 29 | WFME-TV | WEST MILFORD NJ | 121.6 | LIC | BLEDT | -20040712ACP |
| 29 | WFME-TV | WEST MILFORD NJ | 121.6 | PLN | DTVPLN | -DTVP1081 |
| 30 | WFUT-TV | NEWARK NJ | 104.1 | PLN | DTVPLN | -DTVP1113 |
| 31 | WTIC-TV | HARTFORD CT | 47.2 | CP MOD | BMPCDT | -20040616AAM |
| 31 | WTIC-TV | HARTFORD CT | 47.2 | PLN | DTVPLN | -DTVP1133 |
| 31 | WPXN-TV | NEW YORK NY | 108.8 | PLN | DTVPLN | -DTVP1155 |
| 35 | WVIT | NEW BRITAIN CT | 46.8 | LIC | BLCDDT | -20041203AEF |
| 35 | WVIT | NEW BRITAIN CT | 46.8 | PLN | DTVPLN | -DTVP1282 |
| 36 | WNJU | LINDEN NJ | 120.2 | CP MOD | BMPCDT | -20080317ADM |
| 36 | WNJU | LUNDEN NJ | 104.6 | PLN | DTVPLN | -DTVP1339 |
| 42 | WSAH | BRIDGEPORT CT | 14.5 | LIC | BLCDDT | -20061218ACB |
| 42 | WSAH | BRIDGEPORT CT | 14.5 | PLN | DTVPLN | -DTVP1494 |
| 43 | WSAH | BRIDGEPORT CT | 14.5 | LIC | BLCT | -20061116ACY |
| 20 | WTXX | WATERBURY CT | 47.2 | APP | USERRECORD-01 | |

Proposed station is beyond the site to nearest cell evaluation distance

#####

Analysis of Interference to Affected Station 14

Analysis of current record

| Channel | Call | City/State | Application Ref. No. |
|---------|---------|----------------|----------------------|
| 28 | WFXQ-CA | SPRINGFIELD MA | BLTTA -20060302ABV |

Stations Potentially Affecting This Station

| Chan | Call | City/State | Dist(km) | Status | Application Ref. No. |
|------|---------|----------------|----------|--------|----------------------|
| 20 | WTXX | WATERBURY CT | 62.8 | PLN | DTVPLN -DTVP0721 |
| 20 | WTXX | WATERBURY CT | 62.8 | CP | BPCDDT -20080328AIO |
| 20 | WCVB-TV | BOSTON MA | 116.0 | LIC | BLCDDT -20020102AAH |
| 20 | WCVB-TV | BOSTON MA | 116.0 | PLN | DTVPLN -DTVP0727 |
| 21 | WSBE-TV | PROVIDENCE RI | 120.0 | LIC | BLEDT -20050307ACR |
| 21 | WSBE-TV | PROVIDENCE RI | 120.0 | PLN | DTVPLN -DTVP0780 |
| 24 | WVTA | WINDSOR VT | 132.8 | CP MOD | BMPEDT -20060306BRA |
| 24 | WVTA | WINDSOR VT | 132.7 | PLN | DTVPLN -DTVP0910 |
| 25 | WNNE | HARTFORD VT | 132.8 | LIC | BLCDDT -20050801BFZ |
| 25 | WNNE | HARTFORD VT | 132.8 | PLN | DTVPLN -DTVP0940 |
| 26 | WHPX | NEW LONDON CT | 99.8 | PLN | DTVPLN -DTVP0950 |
| 26 | WHPX | NEW LONDON CT | 99.8 | CP | BPCDDT -20080313ABQ |
| 26 | WTEN | ALBANY NY | 119.5 | LIC | BLCDDT -20060104ACC |
| 26 | WTEN | ALBANY NY | 119.5 | PLN | DTVPLN -DTVP0968 |
| 27 | WUTF-TV | MARLBOROUGH MA | 95.8 | CP | BPCDDT -20080328AIV |
| 27 | WUTF-TV | MARLBOROUGH MA | 95.8 | PLN | DTVPLN -DTVP1001 |
| 27 | WUNI | WORCESTER MA | 77.0 | LIC | BLCT -19991214ABC |
| 28 | W28AJ | ALLINGTOWN CT | 110.0 | LIC | BLTTL -20010608AAO |

Figure 3

| | | | | | | |
|----|---------|---------------------|-------|--------|---------------|--------------|
| 28 | WLWC | NEW BEDFORD MA | 151.3 | LIC | BMLCT | -20031210ABA |
| 28 | W28DA | PITTSFIELD, ETC. MA | 54.5 | LIC | BLTT | -20061011AAH |
| 28 | W28CM | MANCHESTER NH | 110.3 | LIC | BLTTL | -20050418AAQ |
| 28 | WNBC | NEW YORK NY | 200.9 | CP MOD | BMPCDT | -20080314ACO |
| 28 | WNBC | NEW YORK NY | 205.6 | PLN | DTVPLN | -DTVP1049 |
| 28 | WNBC | NEW YORK NY | 200.9 | STA | BDSTA | -20041220ADE |
| 28 | WBRE-TV | WILKES-BARRE PA | 292.4 | LIC | BLCT | -19891005KF |
| 28 | WVER | RUTLAND VT | 160.9 | LIC | BLET | -19930715KJ |
| 29 | WUNI | WORCESTER MA | 77.0 | CP MOD | BMPCDT | -20070308AFR |
| 29 | WUNI | WORCESTER MA | 77.1 | PLN | DTVPLN | -DTVP1072 |
| 30 | WBZ-TV | BOSTON MA | 116.0 | LIC | BLCDT | -20060420ABG |
| 30 | WBZ-TV | BOSTON MA | 116.0 | PLN | DTVPLN | -DTVP1110 |
| 31 | WTIC-TV | HARTFORD CT | 62.8 | CP MOD | BMPCDT | -20040616AAM |
| 31 | WTIC-TV | HARTFORD CT | 62.8 | PLN | DTVPLN | -DTVP1133 |
| 31 | WFXT | BOSTON MA | 117.5 | CP MOD | BMPCDT | -20080307ABR |
| 31 | WFXT | BOSTON MA | 117.4 | PLN | DTVPLN | -DTVP1146 |
| 31 | WFXT | BOSTON MA | 117.4 | LIC | BLCDT | -19990507KI |
| 32 | WBPX | BOSTON MA | 117.0 | PLN | DTVPLN | -DTVP1183 |
| 32 | WBPX | BOSTON MA | 117.0 | LIC | BLCDT | -20040723ACG |
| 35 | WVIT | NEW BRITAIN CT | 63.1 | LIC | BLCDT | -20041203AEF |
| 35 | WVIT | NEW BRITAIN CT | 63.1 | PLN | DTVPLN | -DTVP1282 |
| 35 | WZMY-TV | DERRY NH | 115.8 | LIC | BLCDT | -20070126ACX |
| 35 | WZMY-TV | DERRY NH | 115.9 | PLN | DTVPLN | -DTVP1300 |
| 36 | WCDC-TV | ADAMS MA | 60.7 | CP MOD | BMPCDT | -20080313AAL |
| 36 | WCDC-TV | ADAMS MA | 60.7 | PLN | DTVPLN | -DTVP1331 |
| 36 | WCDC-TV | ADAMS MA | 60.7 | APP | BMPCDT | -20080521ACA |
| 42 | WSAH | BRIDGEPORT CT | 106.2 | LIC | BLCDT | -20061218ACB |
| 42 | WSAH | BRIDGEPORT CT | 106.2 | PLN | DTVPLN | -DTVP1494 |
| 43 | WSAH | BRIDGEPORT CT | 106.2 | LIC | BLCT | -20061116ACY |
| 43 | WGBX-TV | BOSTON MA | 116.0 | LIC | BLEDT | -20021219AAN |
| 43 | WGBX-TV | BOSTON MA | 116.0 | PLN | DTVPLN | -DTVP1539 |
| 43 | WCWN | SCHENECTADY NY | 119.5 | LIC | BLCDT | -20050623ABN |
| 43 | WCWN | SCHENECTADY NY | 119.5 | PLN | DTVPLN | -DTVP1549 |
| 20 | WTX | WATERBURY CT | 62.8 | APP | USERRECORD-01 | |

Proposed station is beyond the site to
nearest cell evaluation distance

#####

Analysis of Interference to Affected Station 15

Analysis of current record
Channel Call City/State Application Ref. No.
20 WTX WATERBURY CT USERRECORD-01

Stations Potentially Affecting This Station

| Chan | Call | City/State | Dist(km) | Status | Application Ref. No. |
|------|---------|------------|----------|--------|----------------------|
| 19 | WGBH-TV | BOSTON MA | 148.0 | LIC | BLEDT -20021219AAM |
| 19 | WGBH-TV | BOSTON MA | 148.0 | PLN | DTVPLN -DTVP0683 |
| 20 | WCVB-TV | BOSTON MA | 148.0 | LIC | BLCDT -20020102AAH |
| 20 | WCVB-TV | BOSTON MA | 148.0 | PLN | DTVPLN -DTVP0727 |
| 20 | WNYI | ITHACA NY | 312.9 | CP | BPCDT -20080331AEE |
| 20 | WNYI | ITHACA NY | 312.9 | PLN | DTVPLN -DTVP0737 |

Figure 3

| | | | | | | |
|----|---------|----------------|-------|-----|--------|--------------|
| 21 | WLIW | GARDEN CITY NY | 114.1 | CP | BPEDT | -20080317AAQ |
| 21 | WLIW | GARDEN CITY NY | 114.1 | PLN | DTVPLN | -DTVP0774 |
| 21 | WSBE-TV | PROVIDENCE RI | 129.3 | LIC | BLEDT | -20050307ACR |
| 21 | WSBE-TV | PROVIDENCE RI | 129.3 | PLN | DTVPLN | -DTVP0780 |

Total scenarios = 16

Result key: 29
Scenario 1 Affected station 15
Before Analysis

Results for: 20A CT WATERBURY USERRECORD01 APP
HAAT 516.0 m, ATV ERP 470.0 kW

| | POPULATION | AREA (sq km) |
|--------------------------------|------------|--------------|
| within Noise Limited Contour | 6320441 | 36564.8 |
| not affected by terrain losses | 5816028 | 33169.0 |
| lost to NTSC IX | 0 | 0.0 |
| lost to additional IX by ATV | 623446 | 3560.7 |
| lost to ATV IX only | 623446 | 3560.7 |
| lost to all IX | 623446 | 3560.7 |

Potential Interfering Stations Included in above Scenario 1

| | | | |
|--------------------|-------|-------------|-----|
| 19A MA BOSTON | BLEDT | 20021219AAM | LIC |
| 20A MA BOSTON | BLCDT | 20020102AAH | LIC |
| 21A NY GARDEN CITY | BPEDT | 20080317AAQ | CP |
| 21A RI PROVIDENCE | BLEDT | 20050307ACR | LIC |

Result key: 30
Scenario 2 Affected station 15
Before Analysis

Results for: 20A CT WATERBURY USERRECORD01 APP
HAAT 516.0 m, ATV ERP 470.0 kW

| | POPULATION | AREA (sq km) |
|--------------------------------|------------|--------------|
| within Noise Limited Contour | 6320441 | 36564.8 |
| not affected by terrain losses | 5816028 | 33169.0 |
| lost to NTSC IX | 0 | 0.0 |
| lost to additional IX by ATV | 623446 | 3560.7 |
| lost to ATV IX only | 623446 | 3560.7 |
| lost to all IX | 623446 | 3560.7 |

Potential Interfering Stations Included in above Scenario 2

| | | | |
|--------------------|--------|-------------|-----|
| 19A MA BOSTON | BLEDT | 20021219AAM | LIC |
| 20A MA BOSTON | BLCDT | 20020102AAH | LIC |
| 21A NY GARDEN CITY | BPEDT | 20080317AAQ | CP |
| 21A RI PROVIDENCE | DTVPLN | DTVP0780 | PLN |

Result key: 31
Scenario 3 Affected station 15
Before Analysis

Results for: 20A CT WATERBURY USERRECORD01 APP
HAAT 516.0 m, ATV ERP 470.0 kW

| | POPULATION | AREA (sq km) |
|--|------------|--------------|
|--|------------|--------------|

Figure 3

| | | | |
|---|--------------|------------------|-----|
| within Noise Limited Contour | 6320441 | 36564.8 | |
| not affected by terrain losses | 5816028 | 33169.0 | |
| lost to NTSC IX | 0 | 0.0 | |
| lost to additional IX by ATV | 623446 | 3560.7 | |
| lost to ATV IX only | 623446 | 3560.7 | |
| lost to all IX | 623446 | 3560.7 | |
| Potential Interfering Stations Included in above Scenario | 3 | | |
| 19A MA BOSTON | BLEDT | 20021219AAM | LIC |
| 20A MA BOSTON | BLCDT | 20020102AAH | LIC |
| 21A NY GARDEN CITY | DTVPLN | DTVP0774 | PLN |
| 21A RI PROVIDENCE | BLEDT | 20050307ACR | LIC |
| Result key: | 32 | | |
| Scenario | 4 | Affected station | 15 |
| Before Analysis | | | |
| Results for: 20A CT WATERBURY | USERRECORD01 | | APP |
| HAAT 516.0 m, ATV ERP 470.0 kW | | | |
| | POPULATION | AREA (sq km) | |
| within Noise Limited Contour | 6320441 | 36564.8 | |
| not affected by terrain losses | 5816028 | 33169.0 | |
| lost to NTSC IX | 0 | 0.0 | |
| lost to additional IX by ATV | 623446 | 3560.7 | |
| lost to ATV IX only | 623446 | 3560.7 | |
| lost to all IX | 623446 | 3560.7 | |
| Potential Interfering Stations Included in above Scenario | 4 | | |
| 19A MA BOSTON | BLEDT | 20021219AAM | LIC |
| 20A MA BOSTON | BLCDT | 20020102AAH | LIC |
| 21A NY GARDEN CITY | DTVPLN | DTVP0774 | PLN |
| 21A RI PROVIDENCE | DTVPLN | DTVP0780 | PLN |
| Result key: | 33 | | |
| Scenario | 5 | Affected station | 15 |
| Before Analysis | | | |
| Results for: 20A CT WATERBURY | USERRECORD01 | | APP |
| HAAT 516.0 m, ATV ERP 470.0 kW | | | |
| | POPULATION | AREA (sq km) | |
| within Noise Limited Contour | 6320441 | 36564.8 | |
| not affected by terrain losses | 5816028 | 33169.0 | |
| lost to NTSC IX | 0 | 0.0 | |
| lost to additional IX by ATV | 623446 | 3560.7 | |
| lost to ATV IX only | 623446 | 3560.7 | |
| lost to all IX | 623446 | 3560.7 | |
| Potential Interfering Stations Included in above Scenario | 5 | | |
| 19A MA BOSTON | BLEDT | 20021219AAM | LIC |
| 20A MA BOSTON | DTVPLN | DTVP0727 | PLN |
| 21A NY GARDEN CITY | BPEDT | 20080317AAQ | CP |
| 21A RI PROVIDENCE | BLEDT | 20050307ACR | LIC |
| Result key: | 34 | | |

Figure 3

| | | | |
|---|--------------|------------------|-----|
| Scenario | 6 | Affected station | 15 |
| Before Analysis | | | |
| Results for: 20A CT WATERBURY | USERRECORD01 | | APP |
| HAAT 516.0 m, ATV ERP 470.0 kW | | | |
| | POPULATION | AREA (sq km) | |
| within Noise Limited Contour | 6320441 | 36564.8 | |
| not affected by terrain losses | 5816028 | 33169.0 | |
| lost to NTSC IX | 0 | 0.0 | |
| lost to additional IX by ATV | 623446 | 3560.7 | |
| lost to ATV IX only | 623446 | 3560.7 | |
| lost to all IX | 623446 | 3560.7 | |
| Potential Interfering Stations Included in above Scenario | 6 | | |
| 19A MA BOSTON | BLEDT | 20021219AAM | LIC |
| 20A MA BOSTON | DTVPLN | DTVP0727 | PLN |
| 21A NY GARDEN CITY | BPEDT | 20080317AAQ | CP |
| 21A RI PROVIDENCE | DTVPLN | DTVP0780 | PLN |
| Result key: | 35 | | |
| Scenario | 7 | Affected station | 15 |
| Before Analysis | | | |
| Results for: 20A CT WATERBURY | USERRECORD01 | | APP |
| HAAT 516.0 m, ATV ERP 470.0 kW | | | |
| | POPULATION | AREA (sq km) | |
| within Noise Limited Contour | 6320441 | 36564.8 | |
| not affected by terrain losses | 5816028 | 33169.0 | |
| lost to NTSC IX | 0 | 0.0 | |
| lost to additional IX by ATV | 623446 | 3560.7 | |
| lost to ATV IX only | 623446 | 3560.7 | |
| lost to all IX | 623446 | 3560.7 | |
| Potential Interfering Stations Included in above Scenario | 7 | | |
| 19A MA BOSTON | BLEDT | 20021219AAM | LIC |
| 20A MA BOSTON | DTVPLN | DTVP0727 | PLN |
| 21A NY GARDEN CITY | DTVPLN | DTVP0774 | PLN |
| 21A RI PROVIDENCE | BLEDT | 20050307ACR | LIC |
| Result key: | 36 | | |
| Scenario | 8 | Affected station | 15 |
| Before Analysis | | | |
| Results for: 20A CT WATERBURY | USERRECORD01 | | APP |
| HAAT 516.0 m, ATV ERP 470.0 kW | | | |
| | POPULATION | AREA (sq km) | |
| within Noise Limited Contour | 6320441 | 36564.8 | |
| not affected by terrain losses | 5816028 | 33169.0 | |
| lost to NTSC IX | 0 | 0.0 | |
| lost to additional IX by ATV | 623446 | 3560.7 | |
| lost to ATV IX only | 623446 | 3560.7 | |
| lost to all IX | 623446 | 3560.7 | |
| Potential Interfering Stations Included in above Scenario | 8 | | |

Figure 3

| | | | |
|--------------------|--------|-------------|-----|
| 19A MA BOSTON | BLEDT | 20021219AAM | LIC |
| 20A MA BOSTON | DTVPLN | DTVP0727 | PLN |
| 21A NY GARDEN CITY | DTVPLN | DTVP0774 | PLN |
| 21A RI PROVIDENCE | DTVPLN | DTVP0780 | PLN |

Result key: 37
 Scenario 9 Affected station 15
 Before Analysis

| | | |
|--------------------------------|--------------|--------------|
| Results for: 20A CT WATERBURY | USERRECORD01 | APP |
| HAAT 516.0 m, ATV ERP 470.0 kW | | |
| | POPULATION | AREA (sq km) |
| within Noise Limited Contour | 6320441 | 36564.8 |
| not affected by terrain losses | 5816028 | 33169.0 |
| lost to NTSC IX | 0 | 0.0 |
| lost to additional IX by ATV | 623446 | 3560.7 |
| lost to ATV IX only | 623446 | 3560.7 |
| lost to all IX | 623446 | 3560.7 |

Potential Interfering Stations Included in above Scenario 9

| | | | |
|--------------------|--------|-------------|-----|
| 19A MA BOSTON | DTVPLN | DTVP0683 | PLN |
| 20A MA BOSTON | BLCDT | 20020102AAH | LIC |
| 21A NY GARDEN CITY | BPEDT | 20080317AAQ | CP |
| 21A RI PROVIDENCE | BLEDT | 20050307ACR | LIC |

Result key: 38
 Scenario 10 Affected station 15
 Before Analysis

| | | |
|--------------------------------|--------------|--------------|
| Results for: 20A CT WATERBURY | USERRECORD01 | APP |
| HAAT 516.0 m, ATV ERP 470.0 kW | | |
| | POPULATION | AREA (sq km) |
| within Noise Limited Contour | 6320441 | 36564.8 |
| not affected by terrain losses | 5816028 | 33169.0 |
| lost to NTSC IX | 0 | 0.0 |
| lost to additional IX by ATV | 623446 | 3560.7 |
| lost to ATV IX only | 623446 | 3560.7 |
| lost to all IX | 623446 | 3560.7 |

Potential Interfering Stations Included in above Scenario 10

| | | | |
|--------------------|--------|-------------|-----|
| 19A MA BOSTON | DTVPLN | DTVP0683 | PLN |
| 20A MA BOSTON | BLCDT | 20020102AAH | LIC |
| 21A NY GARDEN CITY | BPEDT | 20080317AAQ | CP |
| 21A RI PROVIDENCE | DTVPLN | DTVP0780 | PLN |

Result key: 39
 Scenario 11 Affected station 15
 Before Analysis

| | | |
|--------------------------------|--------------|--------------|
| Results for: 20A CT WATERBURY | USERRECORD01 | APP |
| HAAT 516.0 m, ATV ERP 470.0 kW | | |
| | POPULATION | AREA (sq km) |
| within Noise Limited Contour | 6320441 | 36564.8 |
| not affected by terrain losses | 5816028 | 33169.0 |
| lost to NTSC IX | 0 | 0.0 |

Figure 3

| | | |
|------------------------------|--------|--------|
| lost to additional IX by ATV | 623446 | 3560.7 |
| lost to ATV IX only | 623446 | 3560.7 |
| lost to all IX | 623446 | 3560.7 |

Potential Interfering Stations Included in above Scenario 11

| | | | |
|--------------------|--------|-------------|-----|
| 19A MA BOSTON | DTVPLN | DTVP0683 | PLN |
| 20A MA BOSTON | BLCDT | 20020102AAH | LIC |
| 21A NY GARDEN CITY | DTVPLN | DTVP0774 | PLN |
| 21A RI PROVIDENCE | BLEDT | 20050307ACR | LIC |

Result key: 40
 Scenario 12 Affected station 15
 Before Analysis

| | | |
|--------------------------------|--------------|--------------|
| Results for: 20A CT WATERBURY | USERRECORD01 | APP |
| HAAT 516.0 m, ATV ERP 470.0 kW | | |
| | POPULATION | AREA (sq km) |
| within Noise Limited Contour | 6320441 | 36564.8 |
| not affected by terrain losses | 5816028 | 33169.0 |
| lost to NTSC IX | 0 | 0.0 |
| lost to additional IX by ATV | 623446 | 3560.7 |
| lost to ATV IX only | 623446 | 3560.7 |
| lost to all IX | 623446 | 3560.7 |

Potential Interfering Stations Included in above Scenario 12

| | | | |
|--------------------|--------|-------------|-----|
| 19A MA BOSTON | DTVPLN | DTVP0683 | PLN |
| 20A MA BOSTON | BLCDT | 20020102AAH | LIC |
| 21A NY GARDEN CITY | DTVPLN | DTVP0774 | PLN |
| 21A RI PROVIDENCE | DTVPLN | DTVP0780 | PLN |

Result key: 41
 Scenario 13 Affected station 15
 Before Analysis

| | | |
|--------------------------------|--------------|--------------|
| Results for: 20A CT WATERBURY | USERRECORD01 | APP |
| HAAT 516.0 m, ATV ERP 470.0 kW | | |
| | POPULATION | AREA (sq km) |
| within Noise Limited Contour | 6320441 | 36564.8 |
| not affected by terrain losses | 5816028 | 33169.0 |
| lost to NTSC IX | 0 | 0.0 |
| lost to additional IX by ATV | 623446 | 3560.7 |
| lost to ATV IX only | 623446 | 3560.7 |
| lost to all IX | 623446 | 3560.7 |

Potential Interfering Stations Included in above Scenario 13

| | | | |
|--------------------|--------|-------------|-----|
| 19A MA BOSTON | DTVPLN | DTVP0683 | PLN |
| 20A MA BOSTON | DTVPLN | DTVP0727 | PLN |
| 21A NY GARDEN CITY | BPEDT | 20080317AAQ | CP |
| 21A RI PROVIDENCE | BLEDT | 20050307ACR | LIC |

Result key: 42
 Scenario 14 Affected station 15
 Before Analysis

Figure 3

Results for: 20A CT WATERBURY USERRECORD01 APP
HAAT 516.0 m, ATV ERP 470.0 kW

| | POPULATION | AREA (sq km) |
|--------------------------------|------------|--------------|
| within Noise Limited Contour | 6320441 | 36564.8 |
| not affected by terrain losses | 5816028 | 33169.0 |
| lost to NTSC IX | 0 | 0.0 |
| lost to additional IX by ATV | 623446 | 3560.7 |
| lost to ATV IX only | 623446 | 3560.7 |
| lost to all IX | 623446 | 3560.7 |

Potential Interfering Stations Included in above Scenario 14

| | | | |
|--------------------|--------|-------------|-----|
| 19A MA BOSTON | DTVPLN | DTVP0683 | PLN |
| 20A MA BOSTON | DTVPLN | DTVP0727 | PLN |
| 21A NY GARDEN CITY | BPEDT | 20080317AAQ | CP |
| 21A RI PROVIDENCE | DTVPLN | DTVP0780 | PLN |

Result key: 43
Scenario 15 Affected station 15
Before Analysis

Results for: 20A CT WATERBURY USERRECORD01 APP
HAAT 516.0 m, ATV ERP 470.0 kW

| | POPULATION | AREA (sq km) |
|--------------------------------|------------|--------------|
| within Noise Limited Contour | 6320441 | 36564.8 |
| not affected by terrain losses | 5816028 | 33169.0 |
| lost to NTSC IX | 0 | 0.0 |
| lost to additional IX by ATV | 623446 | 3560.7 |
| lost to ATV IX only | 623446 | 3560.7 |
| lost to all IX | 623446 | 3560.7 |

Potential Interfering Stations Included in above Scenario 15

| | | | |
|--------------------|--------|-------------|-----|
| 19A MA BOSTON | DTVPLN | DTVP0683 | PLN |
| 20A MA BOSTON | DTVPLN | DTVP0727 | PLN |
| 21A NY GARDEN CITY | DTVPLN | DTVP0774 | PLN |
| 21A RI PROVIDENCE | BLEDT | 20050307ACR | LIC |

Result key: 44
Scenario 16 Affected station 15
Before Analysis

Results for: 20A CT WATERBURY USERRECORD01 APP
HAAT 516.0 m, ATV ERP 470.0 kW

| | POPULATION | AREA (sq km) |
|--------------------------------|------------|--------------|
| within Noise Limited Contour | 6320441 | 36564.8 |
| not affected by terrain losses | 5816028 | 33169.0 |
| lost to NTSC IX | 0 | 0.0 |
| lost to additional IX by ATV | 623446 | 3560.7 |
| lost to ATV IX only | 623446 | 3560.7 |
| lost to all IX | 623446 | 3560.7 |

Potential Interfering Stations Included in above Scenario 16

| | | | |
|--------------------|--------|----------|-----|
| 19A MA BOSTON | DTVPLN | DTVP0683 | PLN |
| 20A MA BOSTON | DTVPLN | DTVP0727 | PLN |
| 21A NY GARDEN CITY | DTVPLN | DTVP0774 | PLN |

Figure 3

21A RI PROVIDENCE DTVPLN DTVP0780 PLN

FINISHED FINISHED FINISHED FINISHED FINISHED FINISHED

APPENDIX

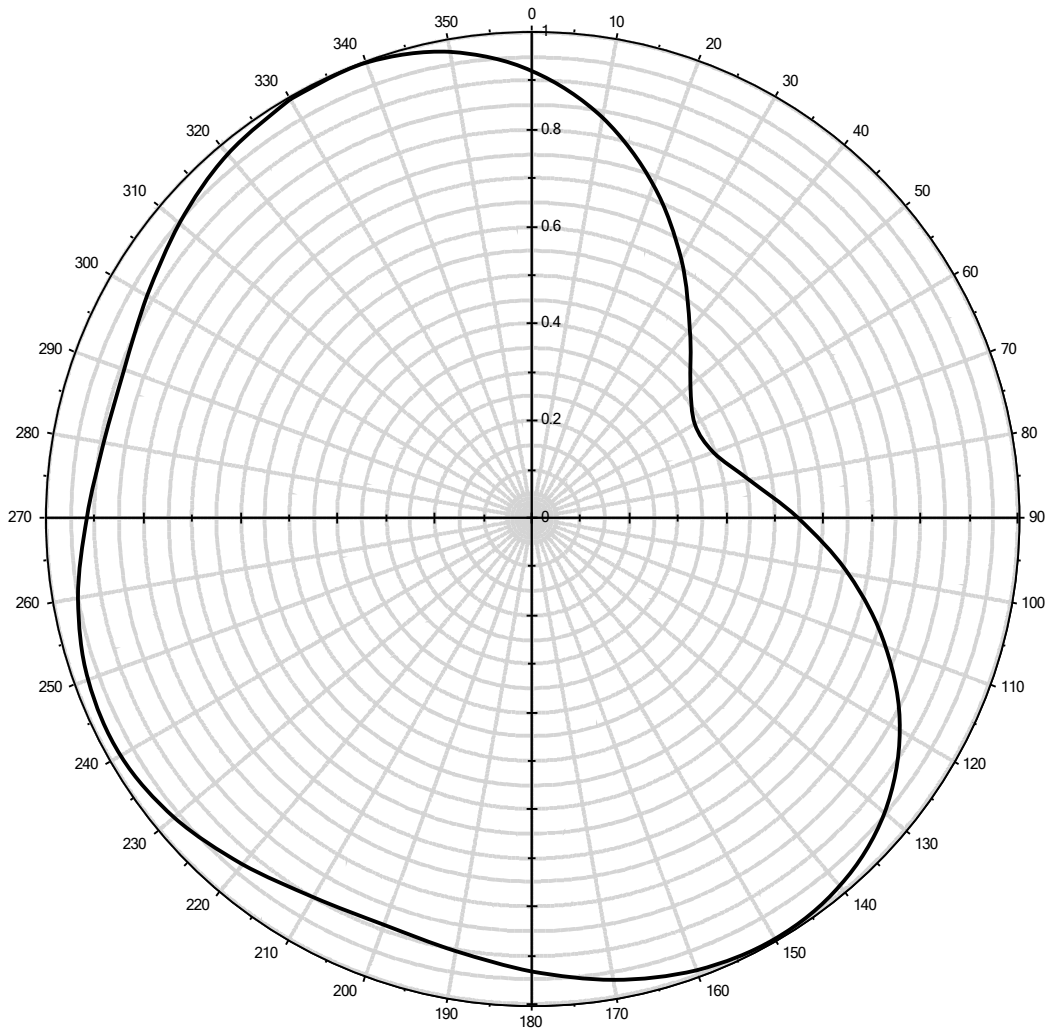
TRANSMITTING ANTENNA
HORIZONTAL PLANE PATTERN

DA Inquiry

du Treil, Lundin, & Rackley, Inc., Sarasota, Florida



Antenna Pattern: Antenna ID: 60837



Note: display reflects rotation of 330.00°

Antenna Details:

| | | | | | | | | | | | |
|-----|-------|------|-------|------|-------|------|-------|------|-------|------|-------|
| 0° | 0.996 | 60° | 0.614 | 120° | 0.547 | 180° | 1.000 | 240° | 0.901 | 300° | 0.917 |
| 10° | 0.998 | 70° | 0.506 | 130° | 0.661 | 190° | 0.990 | 250° | 0.929 | 310° | 0.895 |
| 20° | 0.974 | 80° | 0.426 | 140° | 0.775 | 200° | 0.965 | 260° | 0.960 | 320° | 0.894 |
| 30° | 0.921 | 90° | 0.387 | 150° | 0.874 | 210° | 0.933 | 270° | 0.978 | 330° | 0.915 |
| 40° | 0.837 | 100° | 0.397 | 160° | 0.946 | 220° | 0.905 | 280° | 0.973 | 340° | 0.946 |
| 50° | 0.730 | 110° | 0.454 | 170° | 0.987 | 230° | 0.891 | 290° | 0.949 | 350° | 0.977 |

Antenna Make: DIE

Standard Pattern:

Antenna Model: TFU-24DSC3C140DTV

Last Change Date: 8/14/2003