

EXHIBIT 18A

MV/M AT ONE KILOMETER

CALL KYCY
 FREQUENCY 1550 KHz
 POWER 12,000 Kw
 TYPE OF OPER. DA-D
 HOURS OF OPER. UNLIMITED
 N. LAT 37:18:41
 W. LON 121:48:58
 K FACTOR 806.2487
 PWR RAD. 11.858 Kw
 E(std) 1184.481 mV/m
 E(th) 1127.545 mV/m
 E(rss) 1112.430 mV/m
 E(rss)/E(th) 0.98659
 DATE 01/30/04
 SUPERSEDES
 PATTERN NO. 040130D

STANDARD HORIZONTAL PLANE PATTERN

INFINITY BROADCASTING CORP. CAMPBELL, CALIFORNIA

TOWER	ELECTRICAL HEIGHT	FIELD RATIO	ELECTRICAL PHASE	TRUE ORIENTATION	SPACING
1	124.5	1.000	0.0	0.0	0.0
2	124.5	0.876	61.3	70.0	145.7
3	124.5	0.056	79.4	250.0	145.7
4	124.5	0.365	-177.3	207.9	144.2



LAWRENCE L. MORTON ASSOCIATES
 Telecommunications Engineers
 Hollywood Hills, California

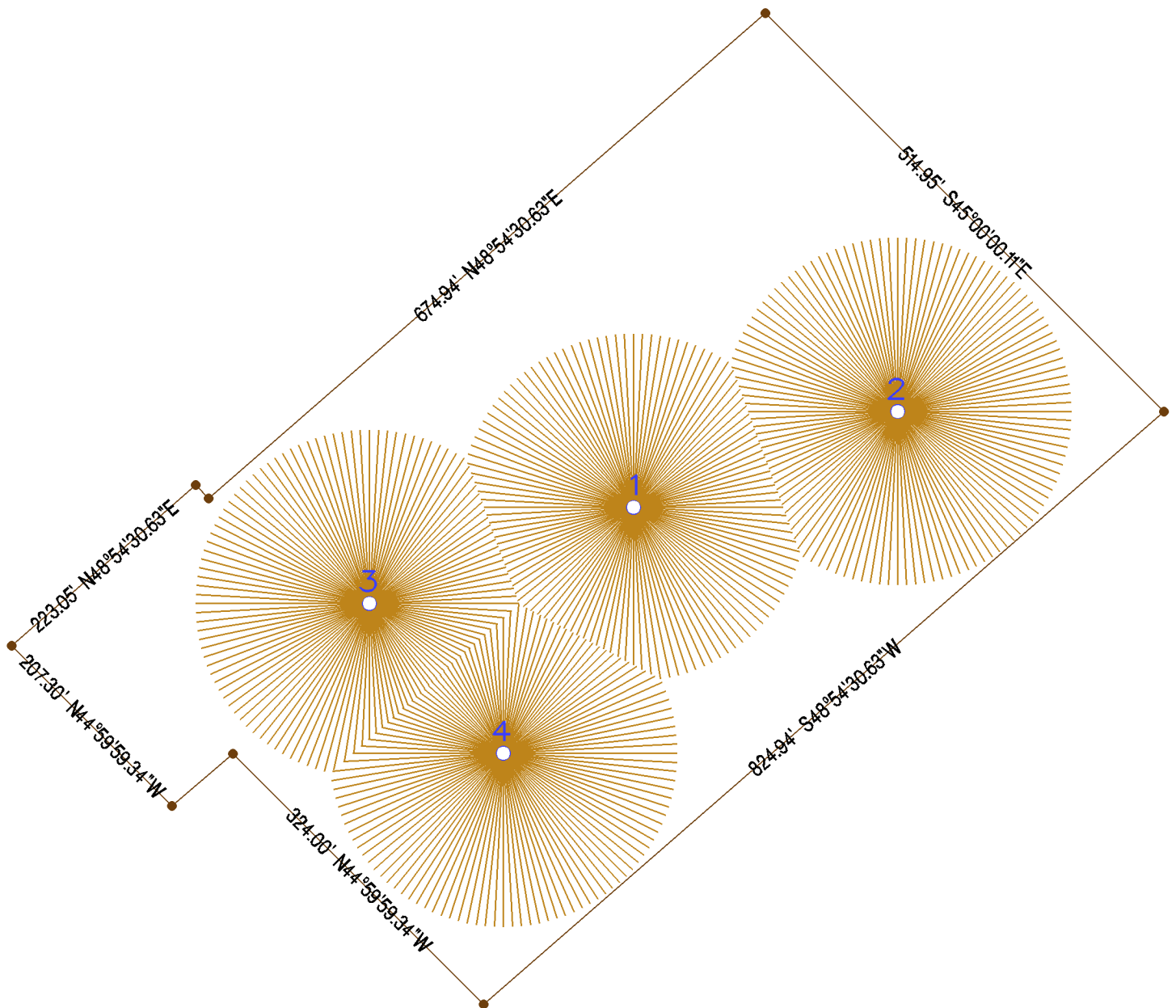



EXHIBIT 18B		PLAT OF PROPERTY BOUNDARIES					
		INFINITY BROADCASTING CORP. CAMPBELL, CALIFORNIA					
CALL		TOWER	ELECTRICAL HEIGHT	FIELD RATIO	ELECTRICAL PHASE	TRUE ORIENTATION	SPACING
FREQUENCY 1550 KHz		1	124.5	1.000	0.0	0.0	0.0
POWER 12.000 Kw		2	124.5	0.876	61.3	70.0	145.7
TYPE OF OPER. DA-D		3	124.5	0.056	79.4	250.0	145.7
HOURS OF OPER. UNLIMITED		4	124.5	0.365	-177.3	207.9	144.2
N. LAT 37:18:41							
W. LON 121:48:58							
K FACTOR 806.2487							
PWR RAD. 11.858 Kw							
E(std) 1184.481 mV/m							
E(th) 1127.545 mV/m							
E(rss) 1112.430 mV/m							
E(rss)/E(th) 0.98659							
DATE 01/30/04							
SUPERSEDES							
PATTERN NO. 040130D							
		 LAWRENCE L. MORTON ASSOCIATES Telecommunications Engineers Hollywood Hills, California					

HORIZONTAL PLANE STANDARD RADIATION
01/30/04

Page 1

STATION: INFINITY BROADCASTING CORP.
CITY/STATE/CNTRY: CAMPBELL, CALIFORNIA
FREQUENCY: 1550 Khz

SITE COORDINATES: 37:18:41 N. Latitude
121:48:58 W. Longitude

BEARING IN DEG	RADIATION IN MV/M AT ONE KM	BEARING IN DEG	RADIATION IN MV/M AT ONE KM
0.00 TN	1254.90 mV/m	180.00 TN	1743.71 mV/m
5.00	1112.76	185.00	1782.38
10.00	963.42	190.00	1797.67
15.00	815.91	195.00	1793.39
20.00	679.16	200.00	1773.83
25.00	561.79	205.00	1743.28
30.00	471.44	210.00	1705.80
35.00	412.67	215.00	1665.00
40.00	383.51	220.00	1623.92
45.00	374.62	225.00	1584.92
50.00	373.67	230.00	1549.65
55.00	370.33	235.00	1518.98
60.00	357.97	240.00	1493.06
65.00	333.15	245.00	1471.31
70.00	294.73	250.00	1452.45
75.00	243.38	255.00	1434.68
80.00	181.38	260.00	1415.77
85.00	113.16	265.00	1393.43
90.00	51.70	270.00	1365.69
95.00	61.52	275.00	1331.54
100.00	120.13	280.00	1291.67
105.00	174.44	285.00	1249.24
110.00	216.62	290.00	1210.42
115.00	247.46	295.00	1184.08
120.00	275.45	300.00	1179.80
125.00	317.06	305.00	1204.30
130.00	389.56	310.00	1257.80
135.00	499.89	315.00	1332.97
140.00	643.11	320.00	1417.30
145.00	808.51	325.00	1496.60
150.00	984.12	330.00	1557.98
155.00	1158.52	335.00	1591.56
160.00	1321.80	340.00	1591.19
165.00	1466.11	345.00	1554.61
170.00	1586.04	350.00	1483.13
175.00	1678.75	355.00	1381.03