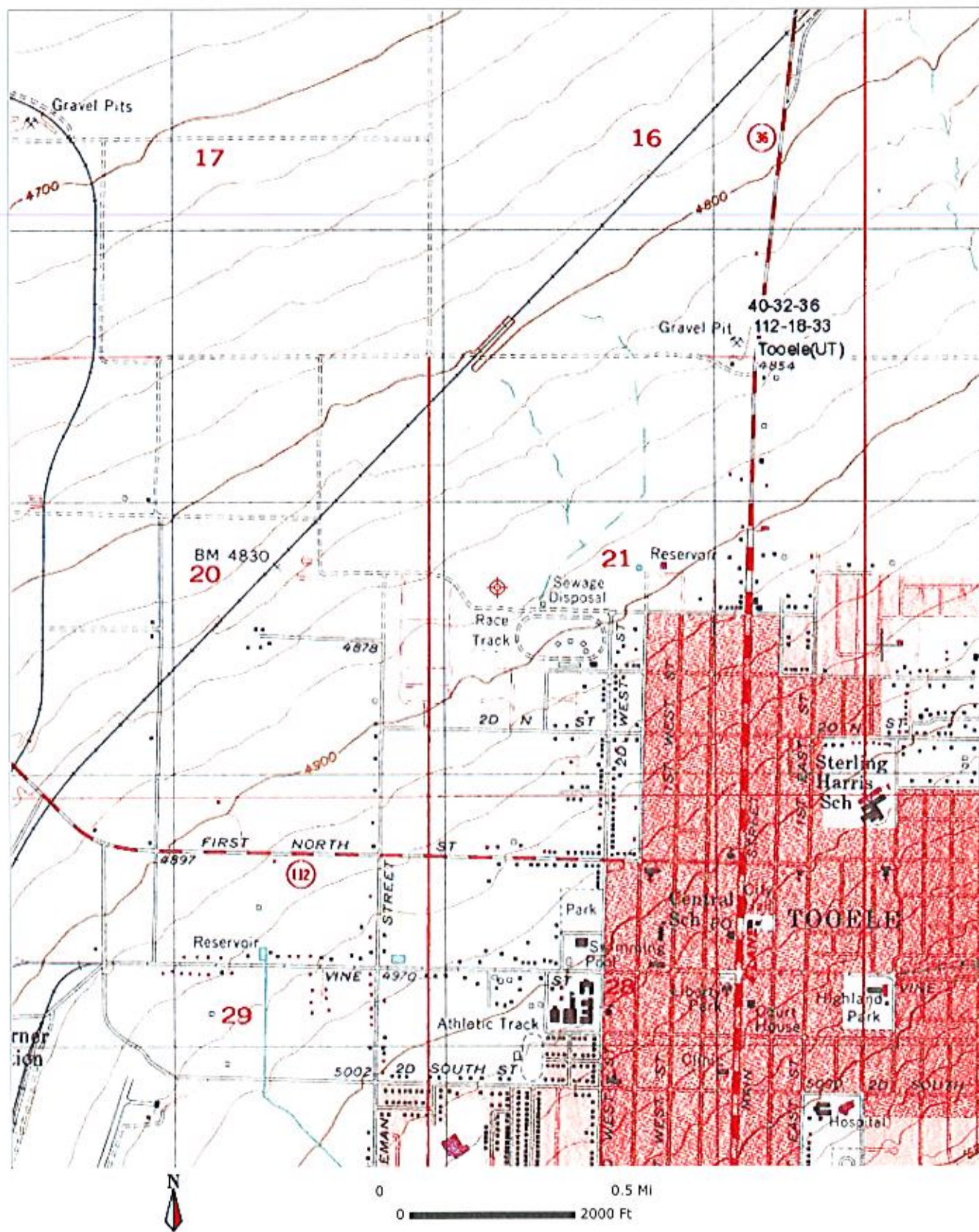


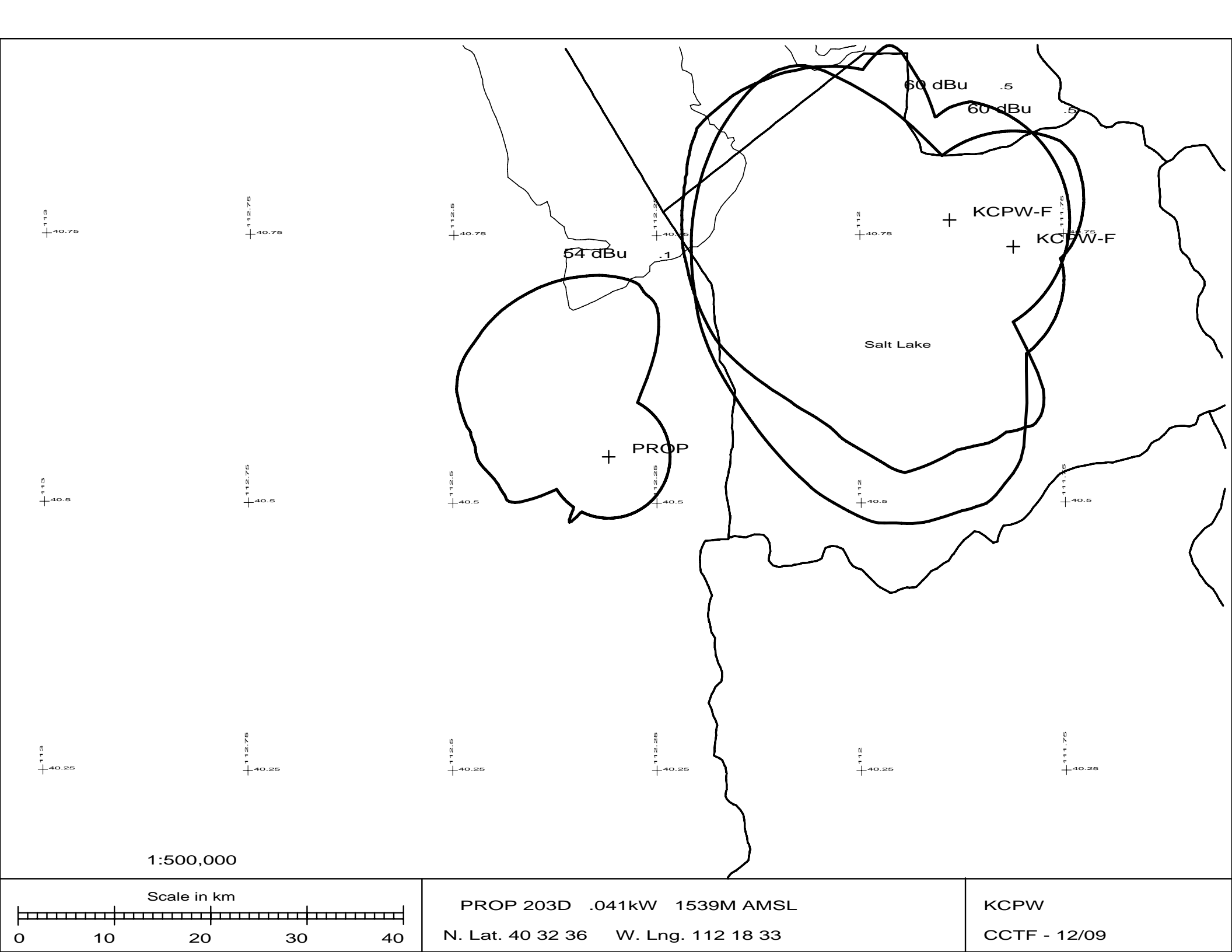
EXHIBIT 12
Waiver Request of Section 74.1204
Tooele, UT K203CQ
Minor Change – Site
December 2009
Calvary Chapel of Twin Falls, Inc.

The proposed site is contained entirely inside the service contour of third-adjacent FM Station KBYU-FM Provo, UT

KBYU-FM

The proposed site is contained entirely inside the service contour of third-adjacent FM Station KBYU-FM, 206C, 32kW, Provo, UT. The level of least arriving protected F(50,50) signal at the proposed transmitter site is 96.6dBu and using the Undesired-to-Desired method for calculating proposed interference, the interfering contour is 136.6-dBu (free-space contour method employed). The interfering signal would, in the worst case at the maximum radial, extend 7 meters from the center of radiation, which is proposed at 50 meters AGL. This interference contour does not touch the ground and leaves 43 meters or 141 feet of clearance to the ground from the lowest part of the interference contour. Attached is a portion of the USGS Tooele(UT) Quadrangle showing this tower is not located in a populated area. Because there are no businesses, residences or major roadways located within this interfering contour, Calvary Chapel of Twin Falls, Inc. respectfully requests a waiver of the FM translator contour overlap regulations with respect to third-adjacent FM Station KBYU-FM.





Contour.out

TERRAIN AND CONTOUR DATA

K203CQ T00ELE, UT

Calvary Chapel of Twin Falls, Inc.

December 2009

Minor Site Change

N. Lat. = 403236.0 W. Lng. = 1121833.0

HAAT and Distance to Contour - FCC Method - USGS 03 SEC

Azi.	AV EL	HAAT	ERP kW	dBk	Field	60-F5
000	1305.4	233.6	0.0410	-13.87	1.000	12.62
001	1306.1	232.9	0.0410	-13.87	1.000	12.61
002	1306.6	232.4	0.0410	-13.87	1.000	12.59
003	1307.6	231.4	0.0410	-13.87	1.000	12.56
004	1308.9	230.1	0.0410	-13.87	1.000	12.53
005	1310.1	228.9	0.0410	-13.87	1.000	12.50
006	1311.0	228.0	0.0410	-13.87	1.000	12.48
007	1312.4	226.6	0.0410	-13.87	1.000	12.44
008	1314.3	224.7	0.0410	-13.87	1.000	12.39
009	1316.1	222.9	0.0410	-13.87	1.000	12.34
010	1318.7	220.3	0.0410	-13.87	1.000	12.27
011	1325.0	214.0	0.0410	-13.87	1.000	12.10
012	1331.0	208.0	0.0410	-13.87	1.000	11.94
013	1335.3	203.7	0.0410	-13.87	1.000	11.83
014	1337.8	201.2	0.0410	-13.87	1.000	11.76
015	1340.5	198.6	0.0410	-13.87	1.000	11.68
016	1343.9	195.1	0.0410	-13.87	1.000	11.59
017	1348.8	190.2	0.0410	-13.87	1.000	11.45
018	1355.5	183.5	0.0410	-13.87	1.000	11.26
019	1363.8	175.2	0.0410	-13.87	1.000	11.01
020	1373.8	165.2	0.0410	-13.87	1.000	10.68
021	1384.4	154.6	0.0410	-13.87	1.000	10.30
022	1399.3	139.7	0.0410	-13.87	1.000	9.75
023	1418.3	120.7	0.0410	-13.87	1.000	9.07
024	1438.3	100.7	0.0410	-13.87	1.000	8.28
025	1462.2	76.8	0.0410	-13.87	1.000	7.17
026	1486.6	52.4	0.0410	-13.87	1.000	5.97
027	1506.6	32.4	0.0410	-13.87	1.000	4.64
028	1528.8	10.2	0.0410	-13.87	1.000	4.46
029	1554.5	-15.5	0.0410	-13.87	1.000	4.46
030	1586.0	-47.0	0.0410	-13.87	1.000	4.46
031	1616.2	-77.2	0.0410	-13.87	1.000	4.46
032	1645.9	-106.9	0.0410	-13.87	1.000	4.46
033	1680.2	-141.2	0.0410	-13.87	1.000	4.46
034	1716.2	-177.2	0.0410	-13.87	1.000	4.46
035	1757.4	-218.4	0.0410	-13.87	1.000	4.46
036	1791.4	-252.4	0.0410	-13.87	1.000	4.46
037	1808.8	-269.8	0.0410	-13.87	1.000	4.46
038	1802.1	-263.1	0.0410	-13.87	1.000	4.46
039	1803.8	-264.8	0.0410	-13.87	1.000	4.46
040	1813.9	-274.9	0.0410	-13.87	1.000	4.46
041	1836.2	-297.2	0.0410	-13.87	1.000	4.46
042	1863.9	-324.9	0.0410	-13.87	1.000	4.46
043	1888.5	-349.5	0.0410	-13.87	1.000	4.46
044	1918.5	-379.5	0.0410	-13.87	1.000	4.46
045	1926.7	-387.7	0.0410	-13.87	1.000	4.46
046	1925.8	-386.8	0.0410	-13.87	1.000	4.46
047	1924.3	-385.3	0.0410	-13.87	1.000	4.46
048	1939.4	-400.4	0.0410	-13.87	1.000	4.46
049	1946.1	-407.1	0.0410	-13.87	1.000	4.46
050	1940.0	-401.0	0.0410	-13.87	1.000	4.46
051	1928.7	-389.7	0.0410	-13.87	1.000	4.46
052	1950.4	-411.4	0.0410	-13.87	1.000	4.46
053	1982.0	-443.0	0.0410	-13.87	1.000	4.46

				Contour.out	
054	1984.9	-445.9	0.0410	-13.87	1.000 4.46
055	1969.1	-430.1	0.0410	-13.87	1.000 4.46
056	1958.9	-419.9	0.0410	-13.87	1.000 4.46
057	1936.6	-397.6	0.0410	-13.87	1.000 4.46
058	1924.8	-385.8	0.0410	-13.87	1.000 4.46
059	1936.7	-397.7	0.0410	-13.87	1.000 4.46
060	1949.7	-410.7	0.0410	-13.87	1.000 4.46
061	1947.1	-408.1	0.0410	-13.87	1.000 4.46
062	1939.9	-400.9	0.0410	-13.87	1.000 4.46
063	1916.4	-377.4	0.0410	-13.87	1.000 4.46
064	1890.2	-351.2	0.0410	-13.87	1.000 4.46
065	1869.9	-330.9	0.0410	-13.87	1.000 4.46
066	1851.2	-312.2	0.0410	-13.87	1.000 4.46
067	1855.0	-316.0	0.0410	-13.87	1.000 4.46
068	1869.7	-330.7	0.0410	-13.87	1.000 4.46
069	1880.6	-341.6	0.0410	-13.87	1.000 4.46
070	1898.8	-359.8	0.0410	-13.87	1.000 4.46
071	1899.7	-360.7	0.0410	-13.87	1.000 4.46
072	1893.0	-354.0	0.0410	-13.87	1.000 4.46
073	1872.0	-333.0	0.0410	-13.87	1.000 4.46
074	1866.2	-327.2	0.0410	-13.87	1.000 4.46
075	1874.9	-335.9	0.0410	-13.87	1.000 4.46
076	1887.0	-348.0	0.0410	-13.87	1.000 4.46
077	1894.0	-355.0	0.0410	-13.87	1.000 4.46
078	1901.3	-362.3	0.0410	-13.87	1.000 4.46
079	1906.7	-367.7	0.0410	-13.87	1.000 4.46
080	1905.2	-366.2	0.0410	-13.87	1.000 4.46
081	1903.4	-364.4	0.0410	-13.87	1.000 4.46
082	1904.4	-365.4	0.0410	-13.87	1.000 4.46
083	1900.1	-361.1	0.0410	-13.87	1.000 4.46
084	1896.2	-357.2	0.0410	-13.87	1.000 4.46
085	1890.1	-351.1	0.0410	-13.87	1.000 4.46
086	1884.9	-345.9	0.0410	-13.87	1.000 4.46
087	1889.4	-350.4	0.0410	-13.87	1.000 4.46
088	1906.4	-367.4	0.0410	-13.87	1.000 4.46
089	1924.1	-385.1	0.0410	-13.87	1.000 4.46
090	1930.4	-391.4	0.0410	-13.87	1.000 4.46
091	1930.7	-391.7	0.0410	-13.87	1.000 4.46
092	1936.0	-397.0	0.0410	-13.87	1.000 4.46
093	1955.7	-416.7	0.0410	-13.87	1.000 4.46
094	1967.0	-428.0	0.0410	-13.87	1.000 4.46
095	1975.0	-436.0	0.0410	-13.87	1.000 4.46
096	1986.7	-447.7	0.0410	-13.87	1.000 4.46
097	1992.0	-453.0	0.0410	-13.87	1.000 4.46
098	1990.6	-451.6	0.0410	-13.87	1.000 4.46
099	1996.2	-457.2	0.0410	-13.87	1.000 4.46
100	2011.6	-472.6	0.0410	-13.87	1.000 4.46
101	2036.4	-497.4	0.0410	-13.87	1.000 4.46
102	2058.4	-519.4	0.0410	-13.87	1.000 4.46
103	2083.3	-544.3	0.0410	-13.87	1.000 4.46
104	2111.3	-572.3	0.0410	-13.87	1.000 4.46
105	2137.9	-598.9	0.0410	-13.87	1.000 4.46
106	2175.0	-636.0	0.0410	-13.87	1.000 4.46
107	2211.2	-672.2	0.0410	-13.87	1.000 4.46
108	2240.1	-701.1	0.0410	-13.87	1.000 4.46
109	2252.4	-713.4	0.0410	-13.87	1.000 4.46
110	2247.4	-708.4	0.0410	-13.87	1.000 4.46
111	2237.1	-698.1	0.0410	-13.87	1.000 4.46
112	2212.1	-673.1	0.0410	-13.87	1.000 4.46
113	2184.0	-645.0	0.0410	-13.87	1.000 4.46
114	2163.7	-624.7	0.0410	-13.87	1.000 4.46
115	2151.2	-612.2	0.0410	-13.87	1.000 4.46
116	2140.0	-601.0	0.0410	-13.87	1.000 4.46
117	2123.6	-584.6	0.0410	-13.87	1.000 4.46
118	2109.7	-570.7	0.0410	-13.87	1.000 4.46
119	2099.6	-560.6	0.0410	-13.87	1.000 4.46

				Contour.out		
120	2076.2	-537.2	0.0410	-13.87	1.000	4.46
121	2054.9	-515.9	0.0410	-13.87	1.000	4.46
122	2035.0	-496.0	0.0410	-13.87	1.000	4.46
123	2040.9	-501.9	0.0410	-13.87	1.000	4.46
124	2069.4	-530.4	0.0410	-13.87	1.000	4.46
125	2108.6	-569.6	0.0410	-13.87	1.000	4.46
126	2162.5	-623.5	0.0410	-13.87	1.000	4.46
127	2187.5	-648.5	0.0410	-13.87	1.000	4.46
128	2196.6	-657.6	0.0410	-13.87	1.000	4.46
129	2203.5	-664.5	0.0410	-13.87	1.000	4.46
130	2214.8	-675.8	0.0410	-13.87	1.000	4.46
131	2221.7	-682.7	0.0410	-13.87	1.000	4.46
132	2231.1	-692.1	0.0410	-13.87	1.000	4.46
133	2253.1	-714.1	0.0410	-13.87	1.000	4.46
134	2284.1	-745.1	0.0410	-13.87	1.000	4.46
135	2317.6	-778.6	0.0410	-13.87	1.000	4.46
136	2335.4	-796.4	0.0410	-13.87	1.000	4.46
137	2339.7	-800.7	0.0410	-13.87	1.000	4.46
138	2351.2	-812.2	0.0410	-13.87	1.000	4.46
139	2360.8	-821.8	0.0410	-13.87	1.000	4.46
140	2366.9	-827.9	0.0410	-13.87	1.000	4.46
141	2354.6	-815.6	0.0410	-13.87	1.000	4.46
142	2341.4	-802.4	0.0410	-13.87	1.000	4.46
143	2330.0	-791.0	0.0410	-13.87	1.000	4.46
144	2320.1	-781.1	0.0410	-13.87	1.000	4.46
145	2291.0	-752.0	0.0410	-13.87	1.000	4.46
146	2248.3	-709.3	0.0410	-13.87	1.000	4.46
147	2225.9	-686.9	0.0410	-13.87	1.000	4.46
148	2228.0	-689.0	0.0410	-13.87	1.000	4.46
149	2226.8	-687.8	0.0410	-13.87	1.000	4.46
150	2207.2	-668.2	0.0410	-13.87	1.000	4.46
151	2189.2	-650.2	0.0410	-13.87	1.000	4.46
152	2159.5	-620.5	0.0410	-13.87	1.000	4.46
153	2130.9	-591.9	0.0410	-13.87	1.000	4.46
154	2119.9	-580.9	0.0410	-13.87	1.000	4.46
155	2104.5	-565.5	0.0410	-13.87	1.000	4.46
156	2098.4	-559.4	0.0410	-13.87	1.000	4.46
157	2103.6	-564.6	0.0410	-13.87	1.000	4.46
158	2115.2	-576.2	0.0410	-13.87	1.000	4.46
159	2121.1	-582.1	0.0410	-13.87	1.000	4.46
160	2121.8	-582.8	0.0410	-13.87	1.000	4.46
161	2107.7	-568.7	0.0410	-13.87	1.000	4.46
162	2084.5	-545.5	0.0410	-13.87	1.000	4.46
163	2082.5	-543.5	0.0410	-13.87	1.000	4.46
164	2100.2	-561.2	0.0410	-13.87	1.000	4.46
165	2134.5	-595.5	0.0410	-13.87	1.000	4.46
166	2149.6	-610.6	0.0410	-13.87	1.000	4.46
167	2131.7	-592.7	0.0410	-13.87	1.000	4.46
168	2132.1	-593.1	0.0410	-13.87	1.000	4.46
169	2139.9	-600.9	0.0410	-13.87	1.000	4.46
170	2159.8	-620.8	0.0410	-13.87	1.000	4.46
171	2178.6	-639.6	0.0410	-13.87	1.000	4.46
172	2179.6	-640.6	0.0410	-13.87	1.000	4.46
173	2165.6	-626.6	0.0410	-13.87	1.000	4.46
174	2144.1	-605.1	0.0410	-13.87	1.000	4.46
175	2110.4	-571.4	0.0410	-13.87	1.000	4.46
176	2071.3	-532.3	0.0410	-13.87	1.000	4.46
177	2029.5	-490.5	0.0410	-13.87	1.000	4.46
178	1995.9	-456.9	0.0410	-13.87	1.000	4.46
179	1963.8	-424.8	0.0410	-13.87	1.000	4.46
180	1933.9	-394.9	0.0410	-13.87	1.000	4.46
181	1902.5	-363.5	0.0410	-13.87	1.000	4.46
182	1877.0	-338.0	0.0410	-13.87	1.000	4.46
183	1849.9	-310.9	0.0410	-13.87	1.000	4.46
184	1823.9	-284.9	0.0410	-13.87	1.000	4.46
185	1799.2	-260.2	0.0410	-13.87	1.000	4.46

				Contour.out		
186	1779.3	-240.3	0.0410	-13.87	1.000	4.46
187	1760.2	-221.2	0.0410	-13.87	1.000	4.46
188	1744.2	-205.2	0.0410	-13.87	1.000	4.46
189	1729.6	-190.6	0.0410	-13.87	1.000	4.46
190	1715.0	-176.0	0.0410	-13.87	1.000	4.46
191	1704.8	-165.8	0.0410	-13.87	1.000	4.46
192	1690.3	-151.3	0.0410	-13.87	1.000	4.46
193	1674.5	-135.5	0.0410	-13.87	1.000	4.46
194	1660.2	-121.2	0.0410	-13.87	1.000	4.46
195	1643.3	-104.3	0.0410	-13.87	1.000	4.46
196	1626.8	-87.8	0.0410	-13.87	1.000	4.46
197	1612.1	-73.1	0.0410	-13.87	1.000	4.46
198	1597.4	-58.4	0.0410	-13.87	1.000	4.46
199	1584.3	-45.3	0.0410	-13.87	1.000	4.46
200	1571.5	-32.5	0.0410	-13.87	1.000	4.46
201	1560.4	-21.4	0.0410	-13.87	1.000	4.46
202	1548.5	-9.5	0.0410	-13.87	1.000	4.46
203	1538.2	0.8	0.0410	-13.87	1.000	4.46
204	1528.2	10.8	0.0410	-13.87	1.000	4.46
205	1520.7	18.3	0.0410	-13.87	1.000	4.46
206	1513.8	25.2	0.0410	-13.87	1.000	4.46
207	1507.0	32.0	0.0410	-13.87	1.000	4.61
208	1502.0	37.0	0.0410	-13.87	1.000	4.98
209	1498.7	40.3	0.0410	-13.87	1.000	5.21
210	1494.9	44.1	0.0410	-13.87	1.000	5.46
211	1493.0	46.0	0.0410	-13.87	1.000	5.59
212	1495.2	43.8	0.0410	-13.87	1.000	5.45
213	1500.4	38.6	0.0410	-13.87	1.000	5.09
214	1506.7	32.3	0.0410	-13.87	1.000	4.63
215	1516.0	23.0	0.0410	-13.87	1.000	4.46
216	1525.7	13.3	0.0410	-13.87	1.000	4.46
217	1536.5	2.5	0.0410	-13.87	1.000	4.46
218	1548.6	-9.6	0.0410	-13.87	1.000	4.46
219	1559.5	-20.5	0.0410	-13.87	1.000	4.46
220	1575.4	-36.4	0.0410	-13.87	1.000	4.46
221	1584.6	-45.6	0.0410	-13.87	1.000	4.46
222	1594.8	-55.8	0.0410	-13.87	1.000	4.46
223	1593.2	-54.2	0.0410	-13.87	1.000	4.46
224	1588.5	-49.5	0.0410	-13.87	1.000	4.46
225	1583.4	-44.4	0.0410	-13.87	1.000	4.46
226	1577.3	-38.3	0.0410	-13.87	1.000	4.46
227	1568.5	-29.5	0.0410	-13.87	1.000	4.46
228	1559.1	-20.1	0.0410	-13.87	1.000	4.46
229	1553.1	-14.1	0.0410	-13.87	1.000	4.46
230	1552.8	-13.8	0.0410	-13.87	1.000	4.46
231	1553.7	-14.7	0.0410	-13.87	1.000	4.46
232	1557.7	-18.7	0.0410	-13.87	1.000	4.46
233	1562.4	-23.4	0.0410	-13.87	1.000	4.46
234	1560.1	-21.1	0.0410	-13.87	1.000	4.46
235	1555.4	-16.4	0.0410	-13.87	1.000	4.46
236	1542.4	-3.4	0.0410	-13.87	1.000	4.46
237	1530.4	8.6	0.0410	-13.87	1.000	4.46
238	1515.1	23.9	0.0410	-13.87	1.000	4.46
239	1503.2	35.8	0.0410	-13.87	1.000	4.89
240	1493.7	45.3	0.0410	-13.87	1.000	5.54
241	1484.2	54.9	0.0410	-13.87	1.000	6.10
242	1474.7	64.3	0.0410	-13.87	1.000	6.58
243	1462.6	76.4	0.0410	-13.87	1.000	7.15
244	1454.6	84.4	0.0410	-13.87	1.000	7.52
245	1448.9	90.1	0.0410	-13.87	1.000	7.80
246	1445.3	93.7	0.0410	-13.87	1.000	7.96
247	1442.8	96.2	0.0410	-13.87	1.000	8.08
248	1442.2	96.8	0.0410	-13.87	1.000	8.11
249	1442.5	96.5	0.0410	-13.87	1.000	8.09
250	1442.2	96.8	0.0410	-13.87	1.000	8.10
251	1441.0	98.0	0.0410	-13.87	1.000	8.16

				Contour.out		
252	1440.0	99.0	0.0410	-13.87	1.000	8.21
253	1439.1	99.9	0.0410	-13.87	1.000	8.25
254	1438.0	101.0	0.0410	-13.87	1.000	8.30
255	1437.2	101.8	0.0410	-13.87	1.000	8.33
256	1436.5	102.5	0.0410	-13.87	1.000	8.36
257	1434.9	104.1	0.0410	-13.87	1.000	8.43
258	1433.1	105.9	0.0410	-13.87	1.000	8.50
259	1431.3	107.7	0.0410	-13.87	1.000	8.58
260	1429.0	110.0	0.0410	-13.87	1.000	8.67
261	1426.1	112.9	0.0410	-13.87	1.000	8.78
262	1423.1	115.9	0.0410	-13.87	1.000	8.90
263	1419.7	119.3	0.0410	-13.87	1.000	9.02
264	1416.3	122.7	0.0410	-13.87	1.000	9.14
265	1412.4	126.6	0.0410	-13.87	1.000	9.28
266	1408.9	130.1	0.0410	-13.87	1.000	9.40
267	1405.7	133.3	0.0410	-13.87	1.000	9.52
268	1402.9	136.1	0.0410	-13.87	1.000	9.62
269	1401.0	138.0	0.0410	-13.87	1.000	9.69
270	1399.5	139.5	0.0410	-13.87	1.000	9.75
271	1397.8	141.2	0.0410	-13.87	1.000	9.81
272	1396.6	142.4	0.0410	-13.87	1.000	9.85
273	1395.7	143.3	0.0410	-13.87	1.000	9.89
274	1395.4	143.6	0.0410	-13.87	1.000	9.90
275	1393.5	145.5	0.0410	-13.87	1.000	9.96
276	1391.3	147.7	0.0410	-13.87	1.000	10.05
277	1388.5	150.5	0.0410	-13.87	1.000	10.15
278	1386.2	152.8	0.0410	-13.87	1.000	10.24
279	1383.8	155.2	0.0410	-13.87	1.000	10.33
280	1382.7	156.3	0.0410	-13.87	1.000	10.36
281	1378.6	160.4	0.0410	-13.87	1.000	10.51
282	1375.5	163.5	0.0410	-13.87	1.000	10.62
283	1372.6	166.4	0.0410	-13.87	1.000	10.72
284	1369.5	169.5	0.0410	-13.87	1.000	10.83
285	1366.7	172.3	0.0410	-13.87	1.000	10.92
286	1363.4	175.6	0.0410	-13.87	1.000	11.03
287	1360.0	179.0	0.0410	-13.87	1.000	11.13
288	1356.8	182.2	0.0410	-13.87	1.000	11.23
289	1353.9	185.1	0.0410	-13.87	1.000	11.31
290	1350.0	189.0	0.0410	-13.87	1.000	11.42
291	1346.5	192.5	0.0410	-13.87	1.000	11.51
292	1343.0	196.0	0.0410	-13.87	1.000	11.61
293	1338.8	200.2	0.0410	-13.87	1.000	11.73
294	1335.7	203.3	0.0410	-13.87	1.000	11.81
295	1333.5	205.5	0.0410	-13.87	1.000	11.88
296	1331.0	208.0	0.0410	-13.87	1.000	11.94
297	1329.1	209.9	0.0410	-13.87	1.000	11.99
298	1326.6	212.4	0.0410	-13.87	1.000	12.06
299	1324.8	214.2	0.0410	-13.87	1.000	12.11
300	1323.0	216.0	0.0410	-13.87	1.000	12.16
301	1321.6	217.4	0.0410	-13.87	1.000	12.20
302	1320.3	218.7	0.0410	-13.87	1.000	12.23
303	1319.0	220.0	0.0410	-13.87	1.000	12.27
304	1318.1	220.9	0.0410	-13.87	1.000	12.29
305	1317.3	221.7	0.0410	-13.87	1.000	12.31
306	1316.5	222.5	0.0410	-13.87	1.000	12.33
307	1316.2	222.8	0.0410	-13.87	1.000	12.34
308	1315.9	223.1	0.0410	-13.87	1.000	12.35
309	1315.6	223.4	0.0410	-13.87	1.000	12.36
310	1315.3	223.7	0.0410	-13.87	1.000	12.36
311	1314.7	224.3	0.0410	-13.87	1.000	12.38
312	1313.9	225.1	0.0410	-13.87	1.000	12.40
313	1313.0	226.0	0.0410	-13.87	1.000	12.42
314	1311.7	227.3	0.0410	-13.87	1.000	12.46
315	1310.5	228.5	0.0410	-13.87	1.000	12.49
316	1310.0	229.0	0.0410	-13.87	1.000	12.50
317	1309.0	230.0	0.0410	-13.87	1.000	12.53

				Contour.out		
318	1308.0	231.0	0.0410	-13.87	1.000	12.55
319	1307.4	231.6	0.0410	-13.87	1.000	12.57
320	1306.9	232.1	0.0410	-13.87	1.000	12.58
321	1306.0	233.0	0.0410	-13.87	1.000	12.61
322	1305.1	233.9	0.0410	-13.87	1.000	12.63
323	1304.6	234.4	0.0410	-13.87	1.000	12.64
324	1303.9	235.1	0.0410	-13.87	1.000	12.66
325	1303.7	235.3	0.0410	-13.87	1.000	12.67
326	1303.2	235.8	0.0410	-13.87	1.000	12.68
327	1303.2	235.8	0.0410	-13.87	1.000	12.68
328	1302.6	236.4	0.0410	-13.87	1.000	12.69
329	1302.4	236.6	0.0410	-13.87	1.000	12.70
330	1302.0	237.0	0.0410	-13.87	1.000	12.71
331	1301.9	237.1	0.0410	-13.87	1.000	12.71
332	1301.6	237.4	0.0410	-13.87	1.000	12.72
333	1301.4	237.6	0.0410	-13.87	1.000	12.73
334	1301.1	237.9	0.0410	-13.87	1.000	12.73
335	1300.9	238.1	0.0410	-13.87	1.000	12.74
336	1300.6	238.4	0.0410	-13.87	1.000	12.75
337	1300.0	239.0	0.0410	-13.87	1.000	12.76
338	1300.2	238.8	0.0410	-13.87	1.000	12.76
339	1300.1	238.9	0.0410	-13.87	1.000	12.76
340	1300.0	239.0	0.0410	-13.87	1.000	12.76
341	1299.9	239.1	0.0410	-13.87	1.000	12.76
342	1299.7	239.3	0.0410	-13.87	1.000	12.77
343	1299.6	239.4	0.0410	-13.87	1.000	12.77
344	1299.7	239.3	0.0410	-13.87	1.000	12.77
345	1299.8	239.2	0.0410	-13.87	1.000	12.77
346	1299.7	239.3	0.0410	-13.87	1.000	12.77
347	1300.0	239.0	0.0410	-13.87	1.000	12.76
348	1300.5	238.5	0.0410	-13.87	1.000	12.75
349	1300.7	238.3	0.0410	-13.87	1.000	12.74
350	1301.1	237.9	0.0410	-13.87	1.000	12.73
351	1301.5	237.5	0.0410	-13.87	1.000	12.72
352	1301.7	237.3	0.0410	-13.87	1.000	12.72
353	1302.0	237.0	0.0410	-13.87	1.000	12.71
354	1302.2	236.8	0.0410	-13.87	1.000	12.70
355	1302.6	236.4	0.0410	-13.87	1.000	12.69
356	1302.8	236.2	0.0410	-13.87	1.000	12.69
357	1302.9	236.1	0.0410	-13.87	1.000	12.69
358	1303.5	235.5	0.0410	-13.87	1.000	12.67
359	1304.3	234.7	0.0410	-13.87	1.000	12.65

Ave EI = 1682.26 M HAAT= -143.26 M AMSL= 1539
Area by numeric integration= 200.45 Sq km.