

**W249CC, TOCCOA, GA: MINOR CHANGE TO LICENSED FACILITY**

**Proposed 100 dBu F(50,10) - contains no population by remaining above buildings**

**Radio Data Services**



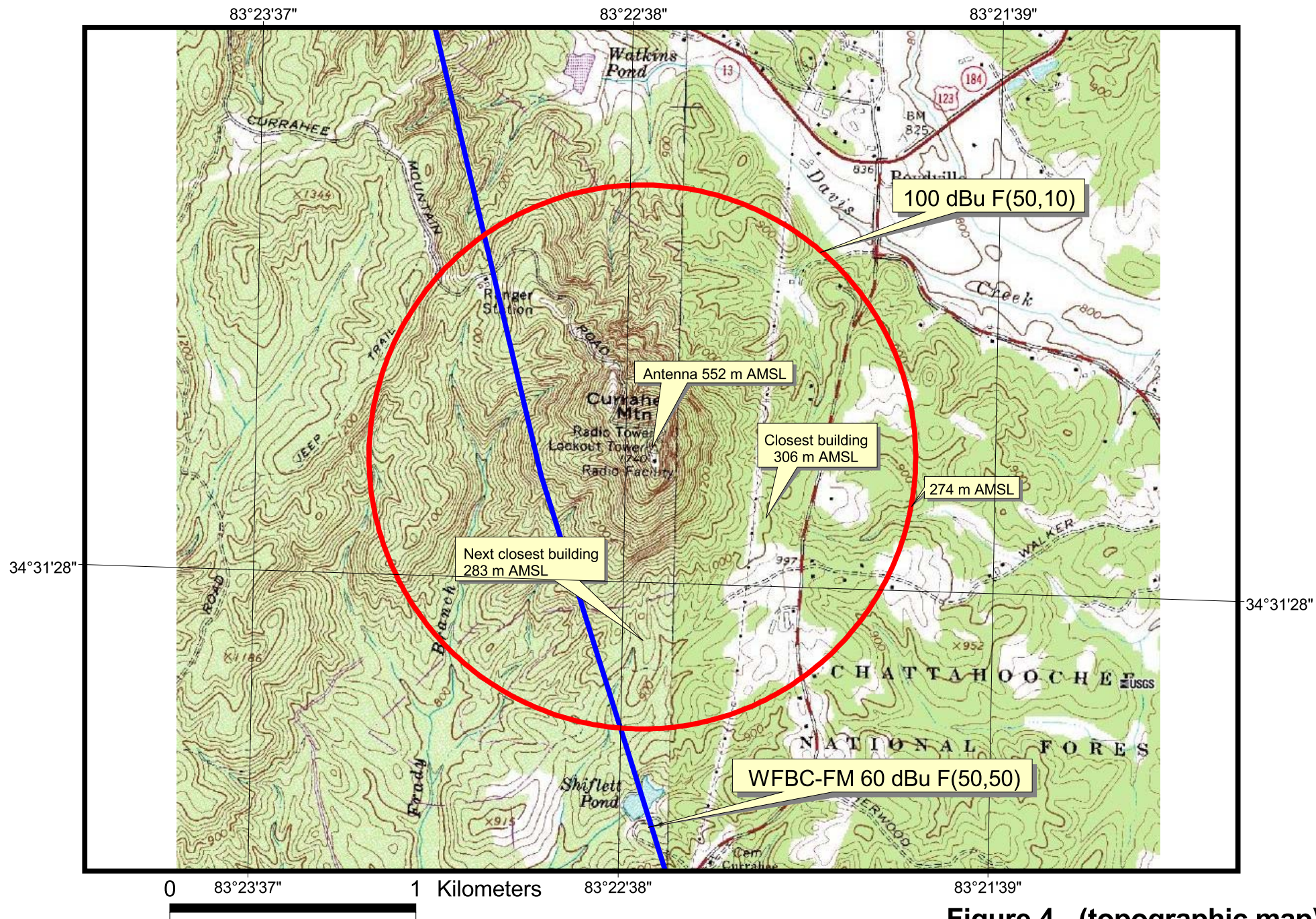


Figure 4 - (topographic map)

**W249CC, TOCCOA, GA: MINOR CHANGE TO LICENSED FACILITY**

**Proposed 100 dBu F(50,10) - contains no population by remaining above buildings**

**Radio Data Services**

Antenna Mfg.: Shively Labs  
Antenna Type: 6812-2

Date: 11/23/2011

Station: none

Beam Tilt 0

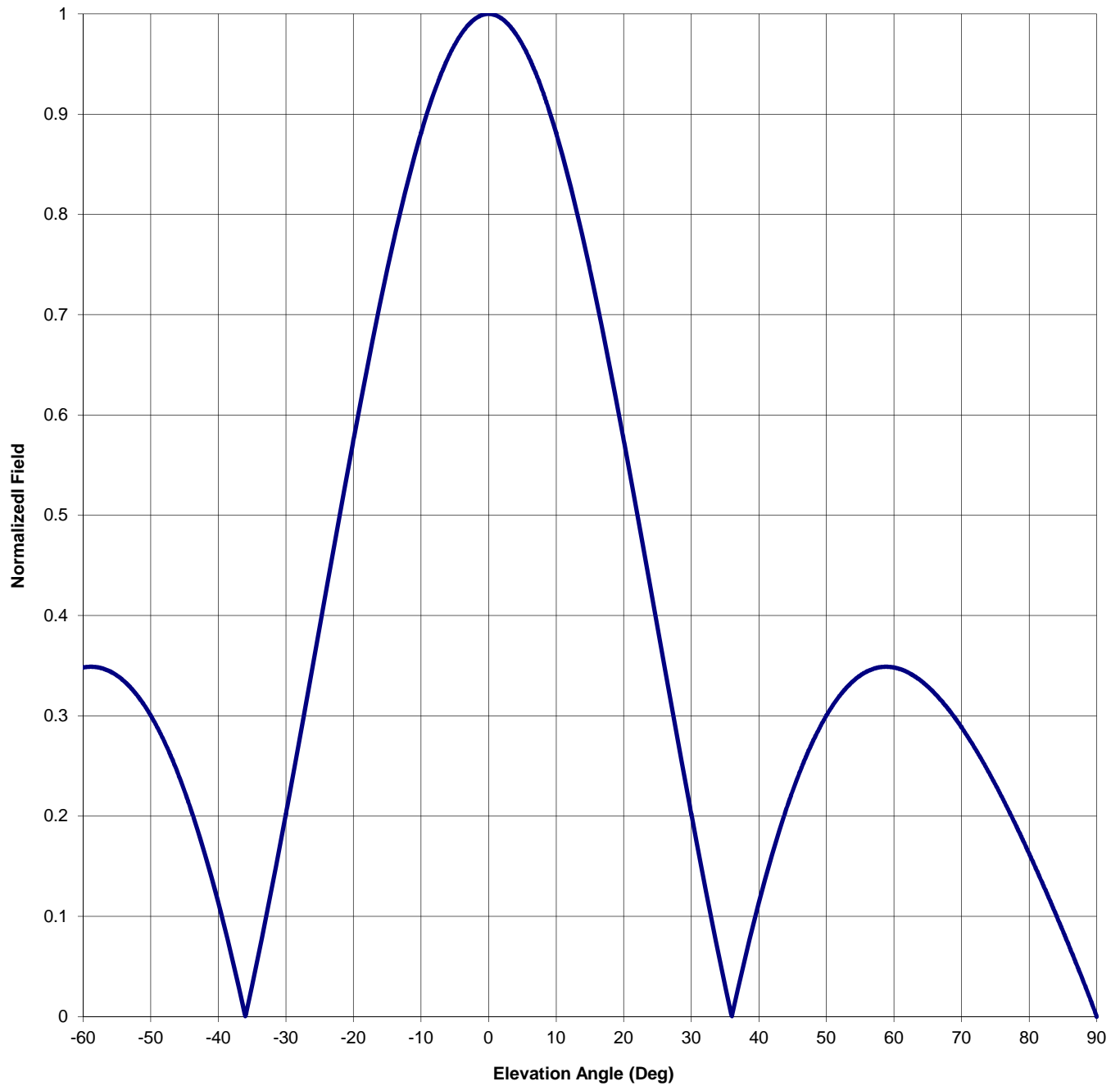
Frequency: 93.1

Gain (Max) 1.005 0.022 dB

Channel #: 226

Gain (Horizon) 1.005 0.022 dB

Figure: 3





Antenna Mfg.: Shively Labs

Date: 11/23/2011

Antenna Type: 6812-2

Station: none

Beam Tilt 0

Frequency: 93.1

Gain (Max) 1.005

0.022 dB

Channel #: 226

Gain (Horizon) 1.005

0.022 dB

Figure: 3

Angle of Depression (Deg)	Relative Field	Angle of Depression (Deg)	Relative Field	Angle of Depression (Deg)	Relative Field	Angle of Depression (Deg)	Relative Field
-90	0.000	-44	0.206	0	1.000	46	0.243
-89	0.018	-43	0.185	1	0.999	47	0.260
-88	0.036	-42	0.163	2	0.995	48	0.275
-87	0.052	-41	0.139	3	0.989	49	0.288
-86	0.069	-40	0.114	4	0.980	50	0.300
-85	0.085	-39	0.087	5	0.969	51	0.311
-84	0.101	-38	0.060	6	0.956	52	0.320
-83	0.117	-37	0.031	7	0.941	53	0.328
-82	0.133	-36	0.000	8	0.923	54	0.335
-81	0.148	-35	0.031	9	0.903	55	0.340
-80	0.163	-34	0.063	10	0.881	56	0.344
-79	0.177	-33	0.097	11	0.857	57	0.347
-78	0.191	-32	0.131	12	0.832	58	0.349
-77	0.205	-31	0.166	13	0.804	59	0.349
-76	0.219	-30	0.202	14	0.775	60	0.348
-75	0.232	-29	0.239	15	0.745	61	0.346
-74	0.244	-28	0.276	16	0.713	62	0.344
-73	0.256	-27	0.313	17	0.680	63	0.340
-72	0.267	-26	0.351	18	0.646	64	0.335
-71	0.278	-25	0.388	19	0.611	65	0.329
-70	0.289	-24	0.426	20	0.575	66	0.323
-69	0.298	-23	0.464	21	0.538	67	0.315
-68	0.307	-22	0.501	22	0.501	68	0.307
-67	0.315	-21	0.538	23	0.464	69	0.298
-66	0.323	-20	0.575	24	0.426	70	0.289
-65	0.329	-19	0.611	25	0.388	71	0.278
-64	0.335	-18	0.646	26	0.351	72	0.267
-63	0.340	-17	0.680	27	0.313	73	0.256
-62	0.344	-16	0.713	28	0.276	74	0.244
-61	0.346	-15	0.745	29	0.239	75	0.232
-60	0.348	-14	0.775	30	0.202	76	0.219
-59	0.349	-13	0.804	31	0.166	77	0.205
-58	0.349	-12	0.832	32	0.131	78	0.191
-57	0.347	-11	0.857	33	0.097	79	0.177
-56	0.344	-10	0.881	34	0.063	80	0.163
-55	0.340	-9	0.903	35	0.031	81	0.148
-54	0.335	-8	0.923	36	0.000	82	0.133
-53	0.328	-7	0.941	37	0.031	83	0.117
-52	0.320	-6	0.956	38	0.060	84	0.101
-51	0.311	-5	0.969	39	0.087	85	0.085
-50	0.300	-4	0.980	40	0.114	86	0.069
-49	0.288	-3	0.989	41	0.139	87	0.052
-48	0.275	-2	0.995	42	0.163	88	0.036
-47	0.260	-1	0.999	43	0.185	89	0.018
-46	0.243	0	1.000	44	0.206	90	0.000
-45	0.225			45	0.225		