

PAINTING AND LIGHTING
IN ACCORDANCE WITH
F.A.A. SPECIFICATIONS

NOT DRAWN TO
SCALE OR SHAPE

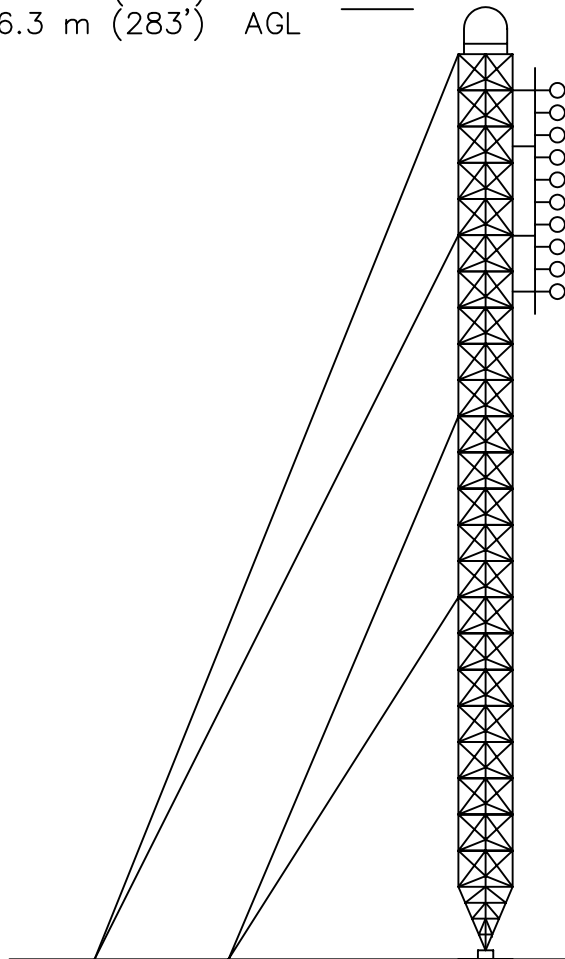
N. LAT.: 30° 33' 44.7"
W. LON: 96° 46' 50.5" NAD 1927

ASN: 2009-ASW-2948-OE
(PENDING)

N. LAT.: 30° 33' 45.4"
W. LON: 96° 46' 51.4" NAD 1983

ASR: - - - - -
(To Be Filed)

234.1 m (768') AMSL
86.3 m (283') AGL



PROPOSED FM ANTENNA
221.0 M (725') AMSL
73.2 M (240') AGL
NO. OF BAYS: 10
ERP = 12.5 kW
FREQ. = 91.9 MHz

147.8 m (485') AMSL

JUNE 2009



FIGURE 2
Vertical Plan Sketch of Proposed
Antenna and Supporting Structure
{June Application for Modification of CP}

KALD[FM], CALDWELL, TEXAS
CH 220C3 12.5 kW 93.2 m