

Exhibit 24 Page 1
Advance Ministries, Inc. D/B/A/
New Life Christian School
Environmental Assessment
Parker, Arizona

The proposed antenna construction does not require any action covered by FCC R&R 1.1307(a).

The proposed facility will not be located in an officially designated wilderness area, nor will it be located in an officially designated wildlife preserve.

The proposed facility will not affect listed threatened or endangered species or designated critical habitats; nor is it likely to jeopardize the continued existence of any proposed endangered or threatened species or likely to result in the destruction or adverse modification of proposed critical habitats, as determined by the Secretary of the Interior pursuant to the Endangered Species Act of 1973.

The proposed facility will not affect districts, sites, buildings, structures or objects, significant in American history, architecture, archeology, engineering or culture, that are listed, or are eligible for listing, in the National Register of Historic Places. (See 16 USC 470w(5); 36 CFR Parts 60 and 800.)

The proposed facility will not:

- (1) Affect Indian religious sites;
- (2) Be located in a flood plain;
- (3) Involve significant change in surface features (e.g., wetland fill, deforestation or water diversion);
- (4) be equipped with high intensity white lights which are to be located in residential neighborhoods.

Exhibit 24 Page 2
Advance Ministries, Inc. D/B/A/
New Life Christian School
Environmental Assessment
Parker, Arizona

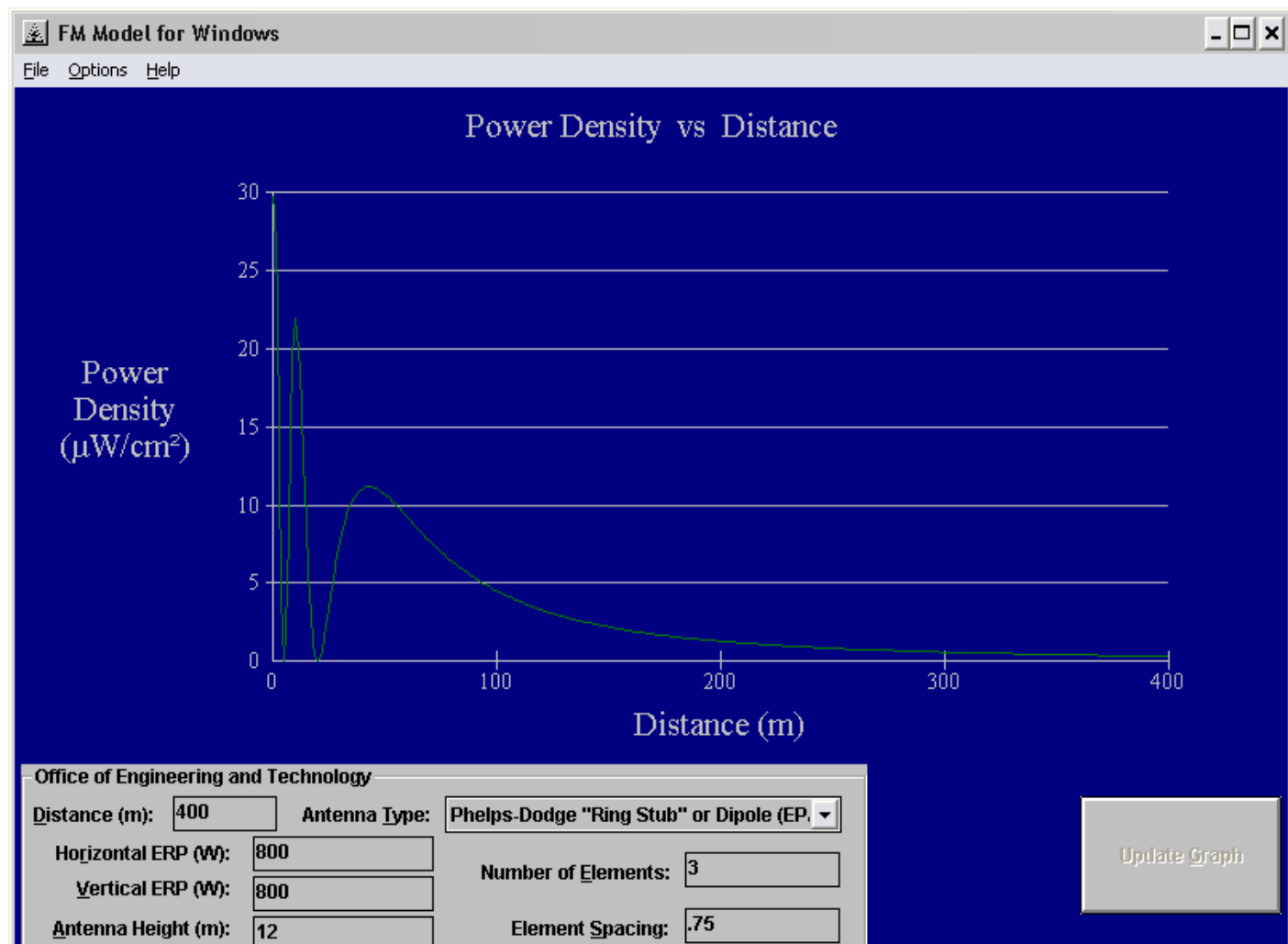
The following environmental assessment has been prepared as required by FCC R&R 1.1307(b).

The applicant proposes facilities of 0.800 kilowatts effective radiated power circular with an antenna center of radiation 12 meters above ground.

The highest power density for 0.800 kilowatts at 12 meters occurs at a distance of 0 meters from the base of the structure. At this location the power density is calculated to be $29.6979 \mu\text{W}/\text{cm}^2$. This is 14.8% of the FCC uncontrolled environment maximum of $200 \mu\text{W}/\text{cm}^2$, and 3.0% of the controlled environment of $1000 \mu\text{W}/\text{cm}^2$. The exposure limit has been calculated out to a distance of 400 meters from the base of the tower. Radiation at this location is within ANSI/FCC standards.

The permittee/licensee will reduce power or cease operation as necessary to protect persons having access to the site, tower or antenna from radiofrequency electromagnetic fields in excess of FCC guidelines.

Exhibit 24 Figure 1
Advance Ministries, Inc. D/B/A/
New Life Christian School
Power Density vs. Distance
Parker, Arizona



Maximum Value of Graph.

The Max Power Density was found to be 29.6978666615448 $\mu\text{W}/\text{cm}^2$ at 0 meters.

Note: Graph resolution is 400 points.

OK