

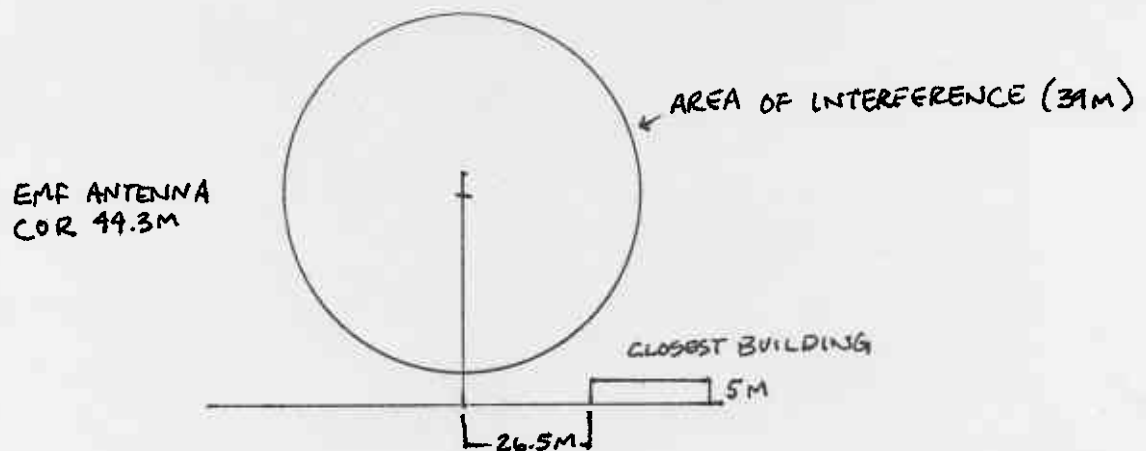
**Compliance with C.F.R. 74.1204**  
**Aerial Map**

Due to the topographical map's lack of clarity as to the presence of tall buildings within the interfering contour produced by the new translator, we have attached an aerial photo of the area in question.

It is known that the tower (Tower ID: 1001554) height above ground is 49.1 meters. On the aerial photo, the shadow of the tower extends about 1 and 1/8". Thus, the scale of the shadows on this map are approximately 1 inch = 48.96 meters. The nearest building to the tower casts a shadow that is approximately 1/16<sup>th</sup> of an inch, thus is calculated to be less than 5 meters high, which places the building outside of the area of predicted interference.

Therefore, EMF respectfully requests a waiver of C.F.R 74.1204 based on no population within the area of predicted interference.

**Note:** The drawing below depicts the information above. Numbers used are approximate.



[Send To Printer](#)

[Back To TerraServer](#)

[Change to 11x17 Print Size](#)

[Show Grid Lines](#)

[Change to Portrait](#)

**USGS Cincinnati, Ohio, United States** 20 Oct 2000

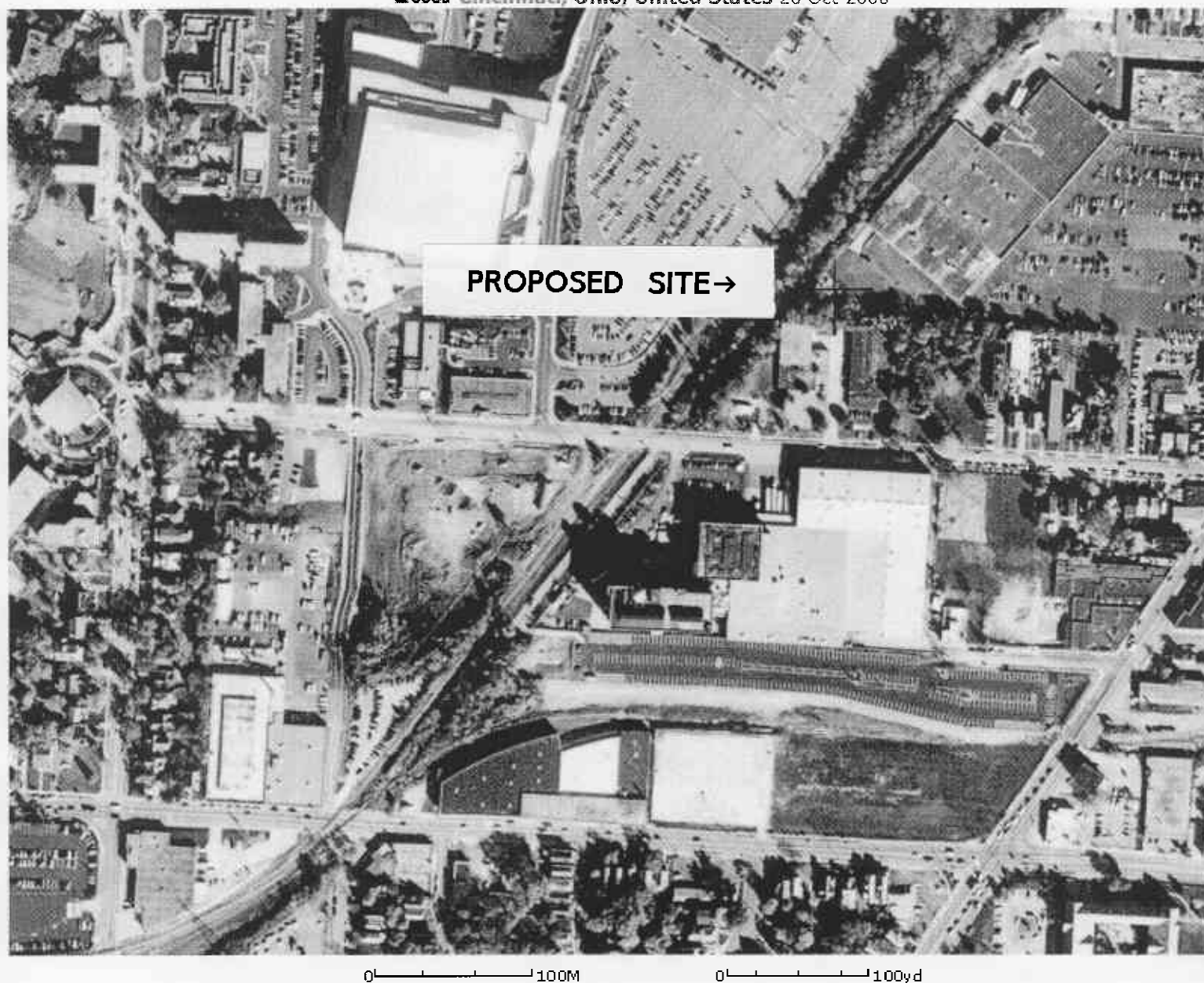


Image courtesy of the U.S. Geological Survey  
© 2003 Microsoft Corporation. All rights reserved. **Terms of Use**

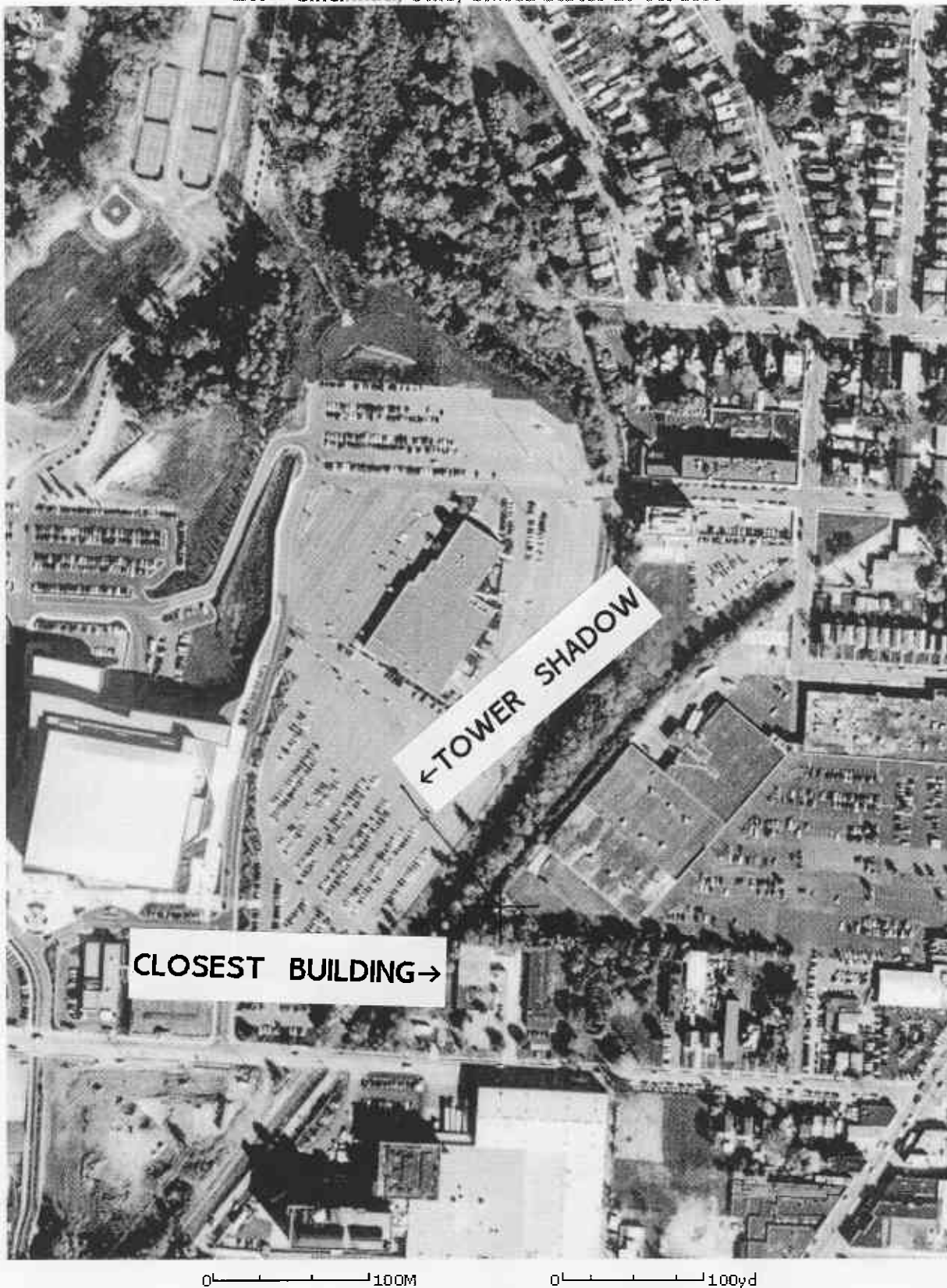


Image courtesy of the U.S. Geological Survey  
© 2003 Microsoft Corporation. All rights reserved. **Terms of Use**