

## **EXHIBIT 13**

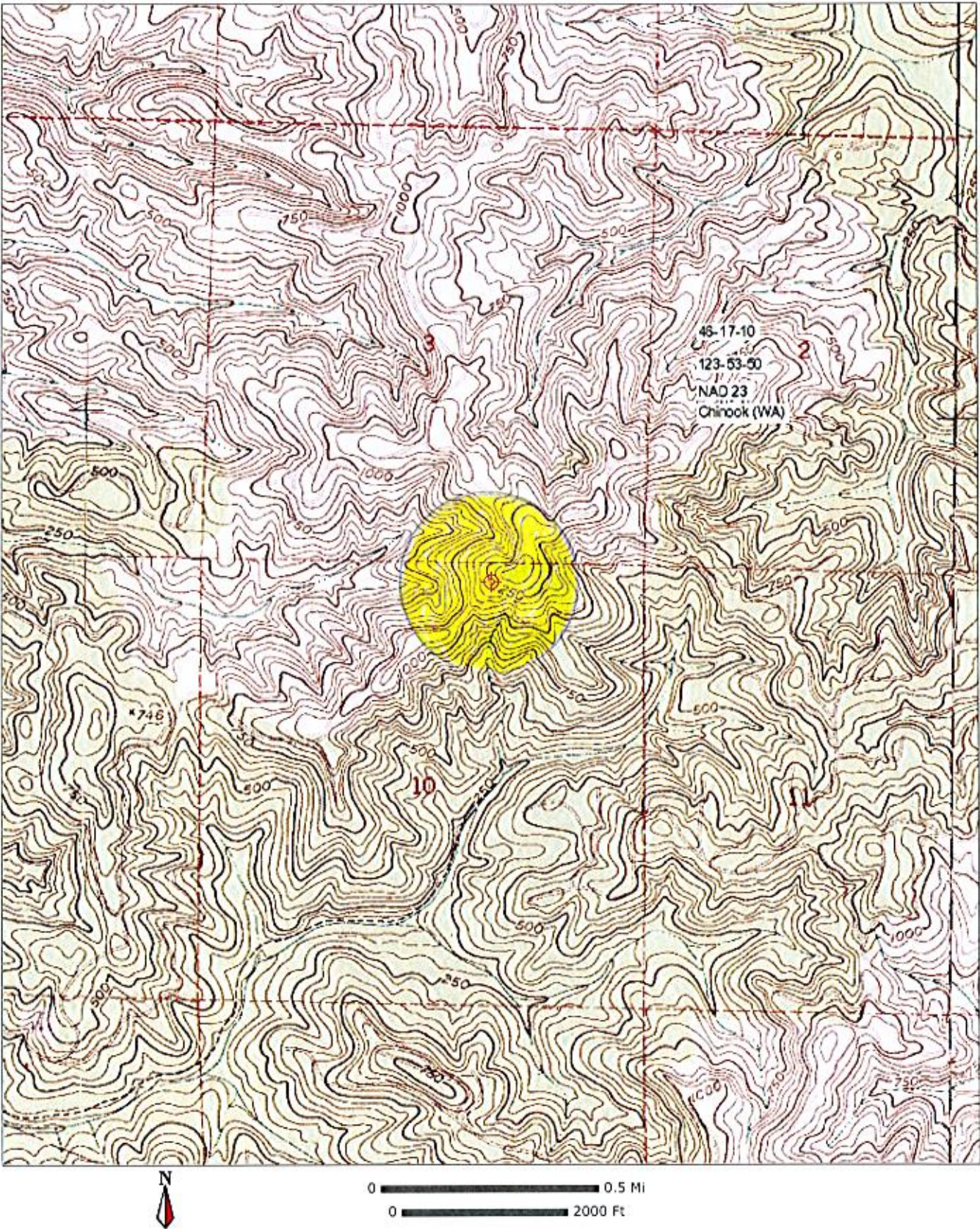
**Waiver Request of Section 74.1204**  
K206CL Astoria OR 13 Watts ERP  
BLFT-20090831ADV  
Minor Channel Change August 011  
Calvary Chapel of Twin Falls, Inc.

The proposed site is contained entirely inside the service contours of third-adjacent FM Station KFET  
Raymond WA

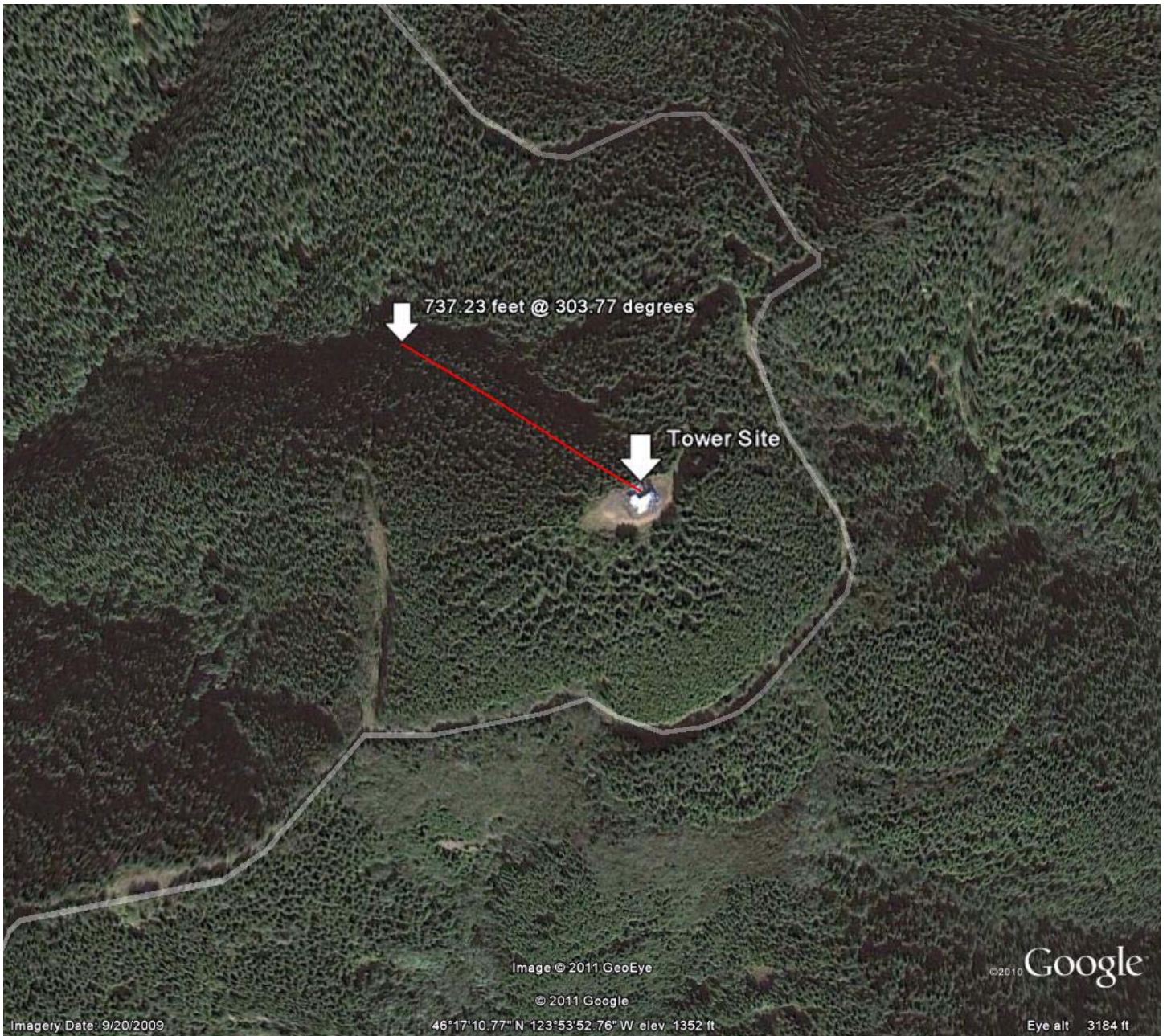
### **KJET**

The proposed site is contained entirely inside the service contour of third-adjacent FM Station KJET, 289C3, 13.5kW, Raymond, WA. The level of least arriving protected F(50,50) signal at the proposed transmitter site is 61.2-dBu. Using the U/D method, the interfering contour is 101.2-dBu (free-space contour method employed). The interfering signal would, in the worst case at the maximum radial, extend 224 meters, or 735 feet, from the base of the tower. Attached is the USGS Chinook (WA) Quadrangle showing that this tower is located in a sparsely populated area. Also attached is an aerial view from Google Earth, also showing this is an unpopulated area where there are no residences, businesses or major roads located within the interference contour. Calvary Chapel of Twin Falls, Inc. respectfully requests a waiver of the FM translator contour overlap regulations with respect to third-adjacent FM Station KJET.









737.23 feet @ 303.77 degrees

Tower Site

Image © 2011 GeoEye

© 2011 Google

Imagery Date: 9/20/2009

46°17'10.77" N 123°53'52.76" W elev 1352 ft

©2010 Google

Eye alt 3184 ft