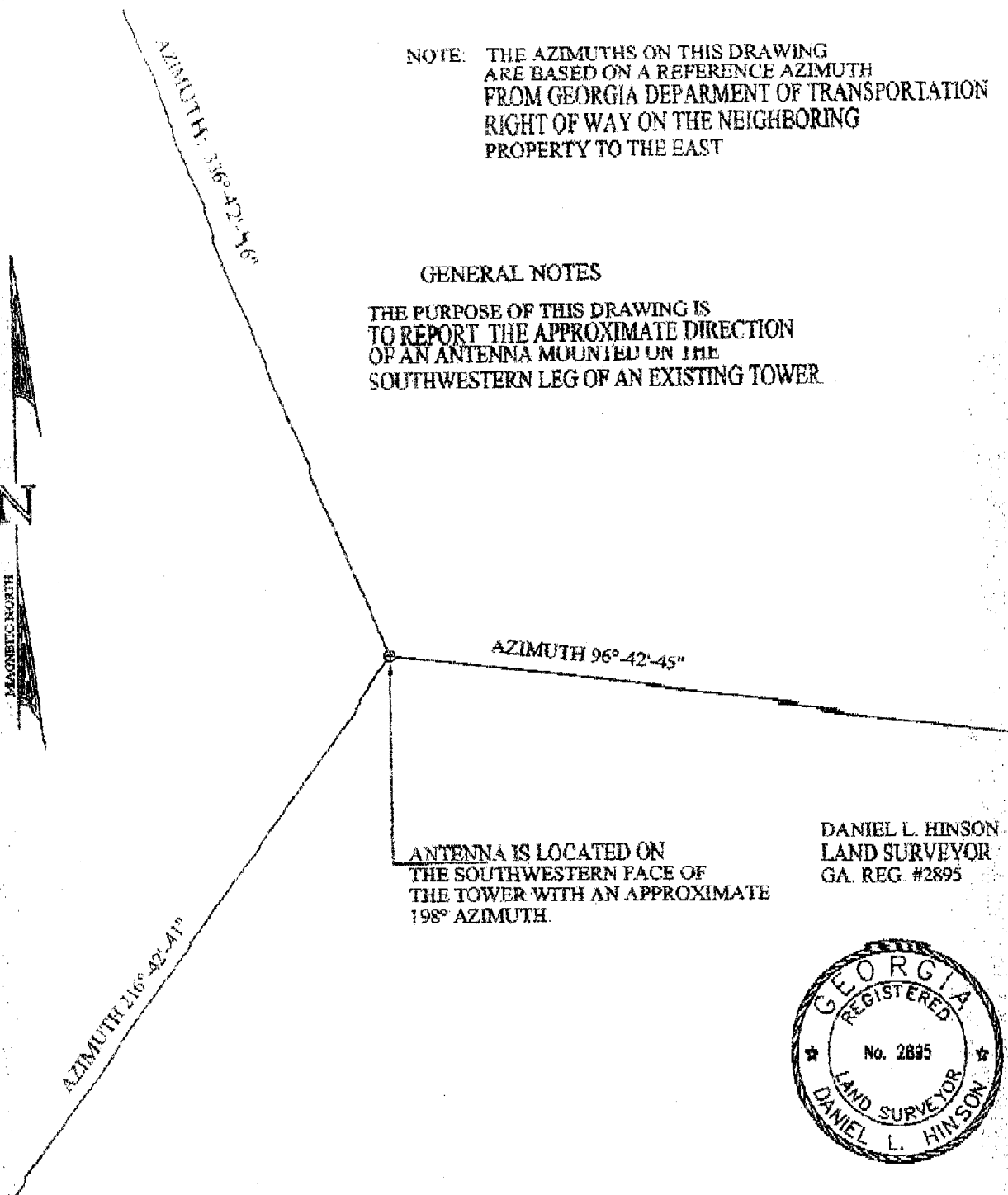


NOTE: THE AZIMUTHS ON THIS DRAWING
ARE BASED ON A REFERENCE AZIMUTH
FROM GEORGIA DEPARTMENT OF TRANSPORTATION
RIGHT OF WAY ON THE NEIGHBORING
PROPERTY TO THE EAST

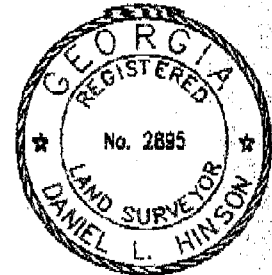
GENERAL NOTES

THE PURPOSE OF THIS DRAWING IS
TO REPORT THE APPROXIMATE DIRECTION
OF AN ANTENNA MOUNTED ON THE
SOUTHWESTERN LEG OF AN EXISTING TOWER



ANTENNA IS LOCATED ON
THE SOUTHWESTERN FACE OF
THE TOWER WITH AN APPROXIMATE
198° AZIMUTH.

DANIEL L. HINSON
LAND SURVEYOR
GA. REG. #2895



ANTENNA LOCATION

FOR EME COMMUNICATIONS

CLYDE SCOTT JR.

IN L.L. 216, 8TH LAND DISTRICT
COLQUITT COUNTY GEORGIA

0 50 100 150 200 300



GRAPHIC SCALE 1 INCH = 100 FEET

DAN HINSON

LAND SURVEYOR INC.

708A N. MAIN STREET PHONE (229)985-1731
MOULTRIE, GA 31768 FAX (229)985-6988

DWG BY: JEH 11460-C37

DATE: 10-21-11 FLD WK: 10-17-11

SCALE: 1 INCH = 100 FEET

SURVEYED BY: CH/GB CHK BY: DLH