

Proposed Minor Change

The License application to cover Construction Permit BPH-20120210AAH was filed on January 17, 2014 (BLH-20140117AAG). This minor change application is being filed contingent upon the grant of the License to Cover application.

This application specifies an upgrade to Class C2 as is indicated below:

	Licensed	Minor Change
Channel	266	266
Class	A	C2
ERP	0.350 kW (H&V) non-DA	6.2 kW (H&V) non-DA
HAAT	408 m	408 m
Geographical Coordinates	42 17 52 / 122 45 00	42 17 52 / 122 45 00
ASRN	N/A	N/A
Site AMSL	1158 m	1158 m
Tower AGL	8 m	8 m
COR AGL	7 m	7 m
COR AMSL	1165 m	1165 m

The below listed pages of this exhibit contains information as indicated.

Page 2 Tabulation of HAAT / distance to 70 dBu and 60 dBu contours
Page 3 Licensed and proposed 70 dBu and 60 dBu contour coverage map
Page 4 Allocation study

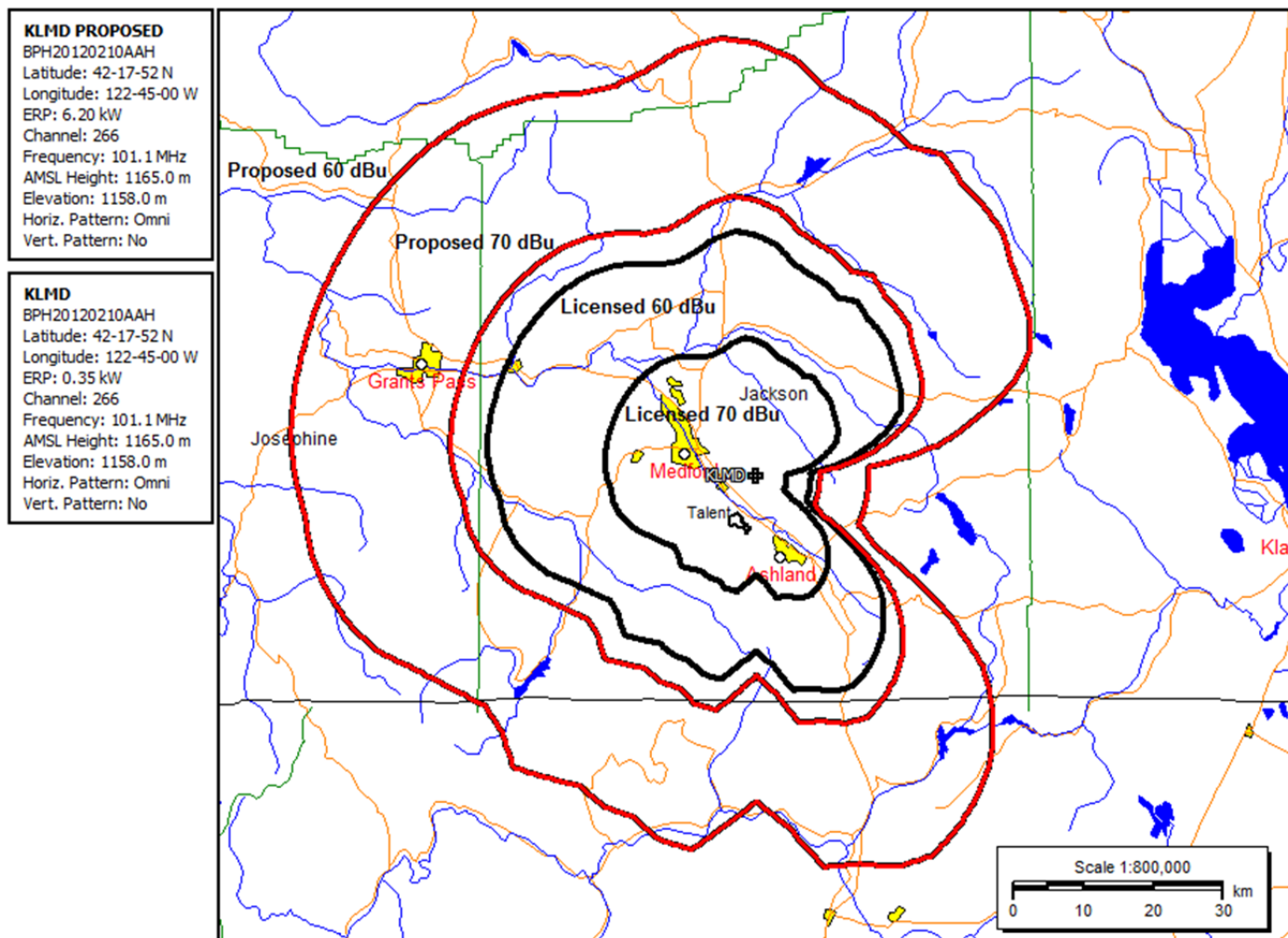
Tabulation of HAAT / distance to 70 dBu and 60 dBu contours

CH 266 42 17 52 / 122 45 00 6.2 kW ERP (H&V, non-da) 1165 m COR AMSL 408 m HAAT

Azi.	AV EL	HAAT	ERP kW	dBk	Field	70-F5	60-F5
000	595.8	569.2	6.2000	7.92	1.000	39.13	61.35
010	689.9	475.1	6.2000	7.92	1.000	35.21	55.91
020	735.4	429.6	6.2000	7.92	1.000	33.38	53.35
030	747.4	417.6	6.2000	7.92	1.000	32.91	52.70
040	795.7	369.3	6.2000	7.92	1.000	31.05	50.05
045	810.8	354.2	6.2000	7.92	1.000	30.40	49.15
050	843.9	321.1	6.2000	7.92	1.000	28.86	47.07
060	882.6	282.4	6.2000	7.92	1.000	27.11	44.65
070	970.9	194.1	6.2000	7.92	1.000	22.74	38.63
080	1081.7	83.3	6.2000	7.92	1.000	14.70	26.15
090	1206.7	-41.7	6.2000	7.92	1.000	9.00	15.89
100	1311.5	-146.5	6.2000	7.92	1.000	9.00	15.89
110	1319.1	-154.1	6.2000	7.92	1.000	9.00	15.89
120	1120.8	44.2	6.2000	7.92	1.000	10.87	19.43
130	926.2	238.8	6.2000	7.92	1.000	25.07	41.87
135	838.3	326.7	6.2000	7.92	1.000	29.12	47.42
140	764.8	400.2	6.2000	7.92	1.000	32.24	51.75
150	668.5	496.5	6.2000	7.92	1.000	36.10	57.19
160	645.5	519.5	6.2000	7.92	1.000	37.08	58.60
170	688.4	476.6	6.2000	7.92	1.000	35.27	56.00
180	862.9	302.1	6.2000	7.92	1.000	28.00	45.89
190	733.9	431.1	6.2000	7.92	1.000	33.44	53.43
200	776.8	388.2	6.2000	7.92	1.000	31.78	51.10
210	790.6	374.4	6.2000	7.92	1.000	31.26	50.34
220	731.3	433.7	6.2000	7.92	1.000	33.54	53.58
225	778.5	386.5	6.2000	7.92	1.000	31.72	51.00
230	792.9	372.1	6.2000	7.92	1.000	31.17	50.21
240	706.2	458.8	6.2000	7.92	1.000	34.54	54.97
250	598.7	566.3	6.2000	7.92	1.000	39.02	61.21
260	528.5	636.5	6.2000	7.92	1.000	41.43	63.98
270	488.6	676.4	6.2000	7.92	1.000	42.76	65.42
280	454.6	710.4	6.2000	7.92	1.000	43.87	66.61
290	448.4	716.6	6.2000	7.92	1.000	44.07	66.82
300	448.6	716.4	6.2000	7.92	1.000	44.06	66.82
310	462.3	702.7	6.2000	7.92	1.000	43.62	66.35
315	476.5	688.5	6.2000	7.92	1.000	43.16	65.85
320	495.2	669.8	6.2000	7.92	1.000	42.54	65.18
330	576.6	588.4	6.2000	7.92	1.000	39.81	62.17
340	641.4	523.6	6.2000	7.92	1.000	37.26	58.86
350	594.1	570.9	6.2000	7.92	1.000	39.19	61.42

(yellow highlighted values establish average HAAT)

Licensed and Proposed 70 dBu and 60 dBu contours



Allocation Study

CH 266 C2 42 17 52 / 122 45 00 6.2 kW ERP (H&V, non-da) 1165 m COR AMSL 408 m HAAT

Call		Channel	Location		Azi	Dist	FCC	Margin
KLKF	CP	264C3	Malin	OR	103.3	94.96	55.5	39.5
KSKR-FM	CP	265C3	Sutherlin	OR	337.8	129.14	116.5	12.6
KWCA	LIC-N	266C2	Palo Cedro	CA	173.9	183.55	189.5	-6.0

This application proposes contour protection to KWCA in accordance with Section 73.215 (see Exhibit 34).

KSKR-FM	LIC	266C3	Sutherlin	OR	337.8	129.14	176.5	-47.4
---------	-----	-------	-----------	----	-------	--------	-------	-------

KLMD BPH-20120210AAH application (CP granted, License to Cover application filed) was filed contingent to KSKR-FM's filing for a change from CH 266 to CH 265. KSKR-FM now has a CP on CH 265, therefore, KSKR-FM on CH 266 is not being considered in this allocation study.