

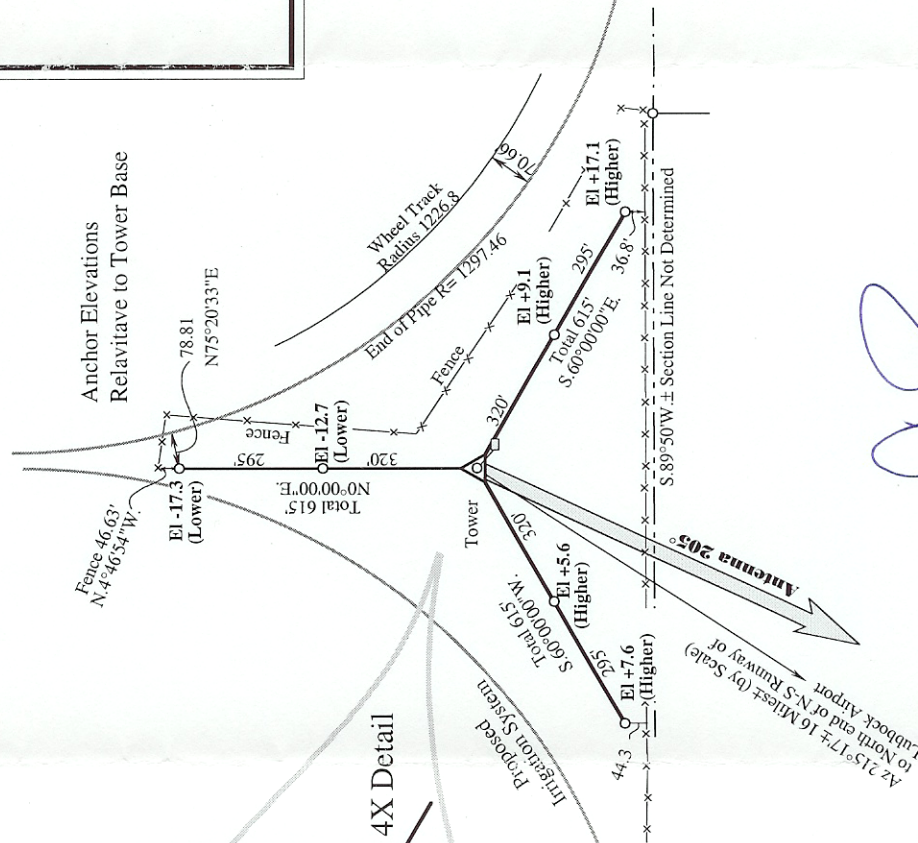
**As Built Location of**  
New Antenna after original  
Tower destroyed.

Antenna Coordinates

NAD'27 GPS Position (*No outside control*)  
Lat. North 33°51'46" ( $\pm 1''$ )  
Long. West 101°40'09" ( $\pm 1''$ )

**The South Part of Survey 4,  
Block S, Hale County, Texas**

Elevation 3278± (Scaled from Quad Sheet)  
(Geoid height by GPS 3254± (No outside control, do not use))



P.O. Box 1418  
Plainview, Texas  
(806) 296-5217 (Fax/Voice)  
© May 6, 2003

Carl Joe Williams, Registered  
Professional Land Surveyor of Texas #2120

Conf. Wilson

Ramar Communications Guy Smith  
Mobil (806) 777-0192 Office 748-9363 Fax  
748-9379

Communications Structures Keith Cendrick (817)  
295-8183

Neil Ardman (830) 980-6499  
H&S Surveyin Co. Jeff Hugart (405) 262-0249  
Fax 262-5107

Hi-Plains Drilling Michael Hardin Off 298-2571  
Mobil 774-6787

