

**ENGINEERING TECHNICAL STATEMENT PREPARED BY WILLIAM T. GODFREY OF THE FIRM KESSLER AND GEHMAN ASSOCIATES, INC., TELECOMMUNICATIONS CONSULTING ENGINEERS IN CONNECTION WITH THE GEORGIA PUBLIC TELECOMMUNICATIONS COMMISSION'S (GPTC) MINOR MODIFICATION OF CONSTRUCTION PERMIT APPLICATION TO CHANGE CHANNELS FROM WACS-DT CHANNEL 26 TO WACS-DT CHANNEL 8 AS AUTHORIZED BY THE FCC IN A REPORT & ORDER RELEASED AUGUST 9, 2002.**

The firm Kessler and Gehman Associates, Inc., (KGA) has been retained by the Georgia Public Telecommunications Commission (GPTC), Atlanta, Georgia in order to prepare engineering studies and the engineering portion of a minor modification of construction permit application to change channels from DTV Channel 26 to DTV Channel 8 as authorized by the FCC in a Report and Order released on August 9, 2002.

**Discussion**

On August 9<sup>th</sup> the FCC released a Report and Order stating that the public interest would be served by allotting DTV Channel \*8 in lieu of DTV Channel \*26 for WACS-DT. In the Order, the FCC stated that the GPTC shall submit to the Commission a minor change application for a construction permit specifying DTV Channel \*8 in lieu of DTV Channel \*26 for station WACS-DT. Accordingly, we are filing a minor modification of construction permit application for Channel 8 with a few changes in parameters than that what was filed in the petition for rule making (PFRM). The PFRM requested authorization for a top-mount directional DTV antenna with an antenna height radiation center of 331.4 meters above average terrain and an effective radiated power (ERP) of 5.0 kW. KGA was informed by the GPTC after the filing that their plan is to side-mount the WACS-DT antenna. Therefore, this minor modification application requests permission to make the following changes: 1) change from DTV Channel 26 to DTV Channel 8 as authorized; 2) change from a top-mount antenna to a side-mount antenna; 3) change antenna height radiation center above average terrain from 331.4 meters to 312.7 meters resulting from the top-mount to side-mount change; and 4) increase the ERP from 5 kW to 6 kW to make up for the loss in antenna height.

**Interference Studies**

The Longley-Rice studies were performed using a Sun Microsystems SPARC 5 computer work station loaded with the FCC's TV Interference and Spacing Analysis software (See Exhibits 12 and 13).

Exhibit 12 depicts detailed Longley-Rice interference studies with WACS-DT operating with the proposed side-mount antenna, at the proposed antenna height and with the proposed ERP (6 kW). As you can see, the proposed WACS-DT Channel 8 facility would not cause more than 2.0% interference to any station with the exception of the GPTC's WXGA-TV facility which has already been signed off by the GPTC and accepted by the FCC. In the R&O released on August 9<sup>th</sup>, the FCC states that WACS's proposal would cause more than 2% interference to WXGA's NTSC operation and acknowledged that WXGA agreed to accept the additional interference. The proposed 18.7 meter antenna height reduction and 1 kW ERP increase from the PFRM parameters results in an increase in interference to WXGA-TV of only 0.2% which rounds to zero. You can verify the numbers by comparing Exhibit 12 (proposed parameters) with Exhibit 13 (PFRM parameters). Exhibit 12 demonstrates that there is no unacceptable interference to any applicable surrounding stations, including Class A stations, with the exception of the aforementioned WXGA-TV facility which belongs to the GPTC.

Exhibit 13 depicts detailed Longley-Rice interference studies with WACS-DT operating at the PFRM parameters. This study was performed so that a comparison could be made between the proposed parameters and the PFRM parameters that were approved by the FCC. As you can see, the PFRM parameters approved by the FCC would result in 9.2% interference to WXGA-TV (Exhibit 13). The proposed parameters would result in 9.4% interference to WXGA-TV (Exhibit 12). Therefore, the increase in interference using the proposed parameters is only 0.2%. As stated in the PFRM, the licensee of WXGA-TV is the GPTC and the GPTC accepts the interference from the proposed WACS-DT Channel 8 to the licensed WXGA-TV Channel 8.

## **Exhibits**

Exhibits 1 and 2 represent WACS-DT's administration data, antenna and antenna structure specifications as per §VII item 10 in the DTV Engineering Technical Specifications portion of the application regarding directional antennas and beam tilt.

Exhibit 3 depicts the profile view of the proposed antenna on the antenna structure with all the appropriate elevations as per §VII item 10 in the DTV Engineering Technical Specifications portion of the application regarding supporting structures and elevations.

Exhibits 4 and 5 display the azimuth pattern and the azimuth pattern tabulation respectively.

Exhibits 6 and 7 display the elevation pattern and the elevation pattern tabulation respectively.

Exhibits 8 and 9 display the ERP/dBk pattern and the ERP/dBk pattern tabulation respectively.

Exhibit 10 depicts the site location of the proposed WACS-DT site on a 7.5-Minute (Series) Topographic Map as per §VII item 10 in the DTV Engineering Technical Specifications portion of the application regarding topographic maps.

Exhibit 11 depicts the proposed WACS-DT coverage contour, boundaries of the principal community to be served, and the proposed transmitting location with radials every 45° as per §VII item 10 in the DTV Engineering Technical Specifications portion of the application regarding Sectional Aeronautical Charts.

Exhibit 12 (27 pages) contains detailed Longley-Rice interference studies using the proposed parameters for WACS-DT Channel 8.

Exhibit 13 (27 pages) contains detailed Longley-Rice interference studies using the PFRM parameters for WACS-DT Channel 8.

## **Environmental Impact**

The proposed construction will have no significant environmental impact as defined in §1.1307 of the FCC Rules. The DTV transmitter, 3-inch (50-ohm) transmission line and antenna system will produce an ERP of 6.0 kW. Assuming that the maximum lobe of radiation is oriented at the base of the tower, it will produce a power density six feet above the ground of 0.00244 mW/cm<sup>2</sup>. This is only 0.2437% of the maximum permissible exposure (MPE) authorized by the American National Standards Institute (ANSI). Since the proposed operation of WACS-DT Channel 8 will not exceed 5.0% of the MPE limit for

population/uncontrolled at any point on the ground, WACS-DT is not considered to be a “significant contributor” to the RF exposure environment pursuant to OET Bulletin 65, Edition 97-01. Therefore, contributions of exposure from other sources were not accounted for in this analysis. It is safe to conclude that the emissions will be insignificant and well within the maximum allowable requirements.

If other antennas are placed on the tower in the future, the applicant will cooperate with those users by reducing or completely terminating the power to the antenna when maintenance workers are in danger from the electromagnetic radiation emanating from the antenna. The tower will be enclosed within a fence with warning signs posted at the locked gate.

### **Certification**

The applicant accepts full responsibility for the elimination of any objectionable interference including that caused by intermodulation to facilities in existence or authorized prior to the grant of this application.

This technical statement was prepared by William T. Godfrey, Telecommunications Consultant with Kessler and Gehman Associates, Inc. having offices in Gainesville, Florida and has been working in the field of radio and television broadcast consulting since 1998. He graduated from the University of North Florida with a Bachelor of Arts degree in Criminal Justice and a minor in Mathematics and received a Commission in the Aviation Branch of the United States Army in 1993. As a Professional in the field of Telecommunications and as a Captain in the United States Army, he states under penalty of perjury that the information contained in this report is true and correct to the best of his knowledge and belief.



KESSLER AND GEHMAN ASSOCIATES, INC.

WILLIAM T. GODFREY  
Telecommunications Consultant

22 August, 2002

**WACS-DT  
DAWSON, GA**

**ENGINEERING SPECIFICATIONS**

**A. Transmitter Site:**

Geographic coordinates determined by licensed surveyor:

North Latitude .....	31° 56' 15"
West Longitude .....	84° 33' 15"

Transmitter Site Address: **Route, 1 Box 75 A Parrot, GA 31777 (12.7 Miles  
NNW of Dawson, GA)**

**B. Main Studio Site Address: 260 14<sup>th</sup> Street N.W., Atlanta, GA 30318.**

**C. Proposed Facility:**

DTV Channel	Number .....	8
	Frequency .....	180 -186 MHz

**D. Antenna Height:**

Height of Site Above Mean Sea Level (AMSL).....	138.0 M
Overall Height of Structure Above Ground.....	334.1 M
(including all appurtenances)	
Overall Height of Structure Above Mean Sea Level.....	472.1 M
(including all appurtenances)	
Height of Site Above Average Terrain .....	7.9 M
Antenna Height Radiation Center (R/C) Above Ground .....	306.8 M
Antenna Height R/C Above Mean Sea Level .....	444.8 M
Average of All Non-Odd Radials.....	132.1 M
Antenna Height R/C Above Average Terrain .....	312.7 M

**E. System Parameters – Circular Polarization:**

Transmitter Power Required .....	0.91 kW
Maximum Power Input to Antenna .....	0.54 kW
Total System Loss .....	2.23 dB
Transmission Line Efficiency .....	59.8%
Maximum Antenna Gain in Beam Maximum .....	13.44 dB
Maximum Antenna Gain in Horizontal Plane.....	13.10 dB
Maximum Effective Radiated Power .....	7.78 dBk
In Beam Maximum .....	6.0 kW
Maximum Effective Radiated Power .....	7.44 dBk
In Horizontal Plane .....	5.55 kW

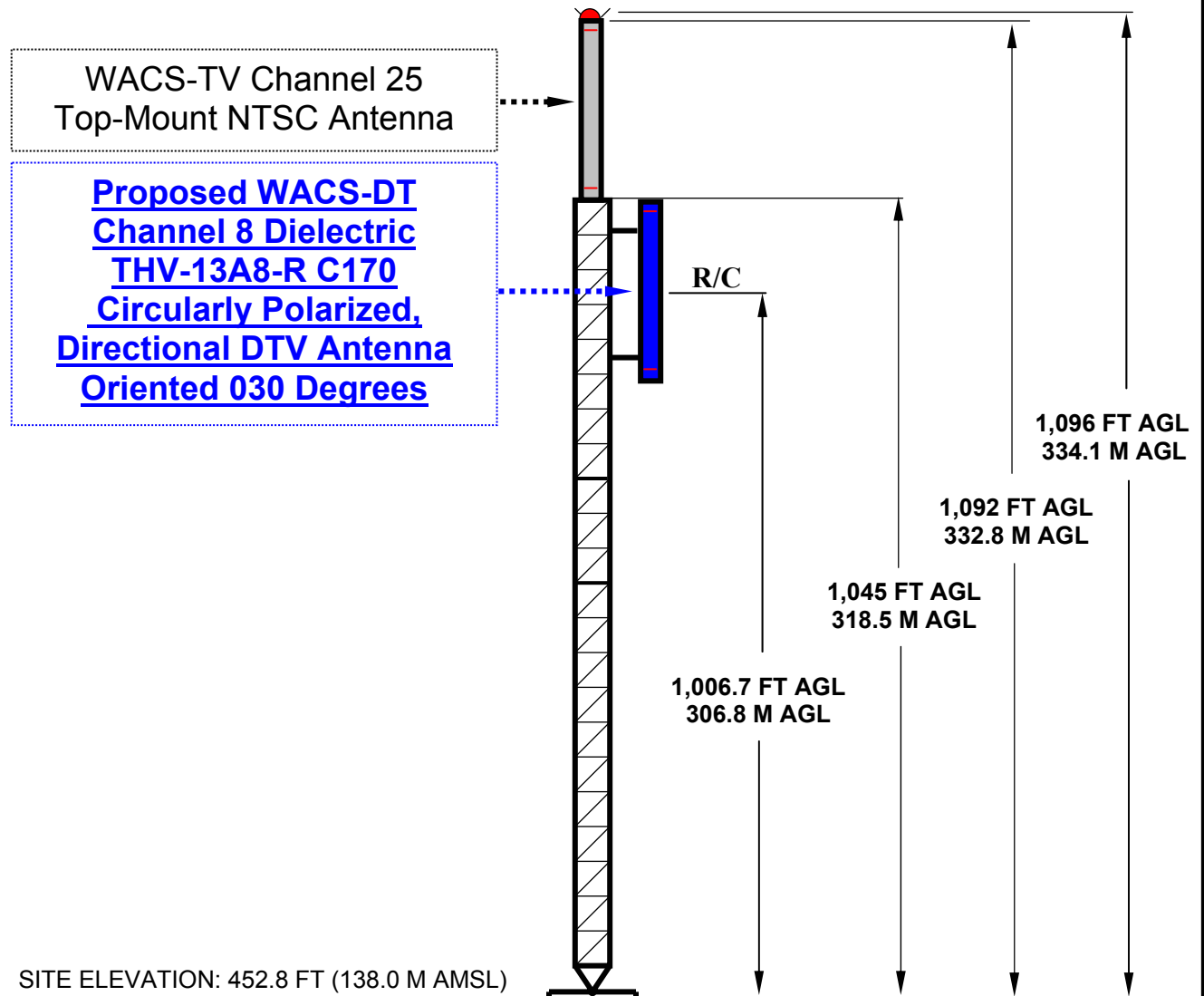
**WACS-DT  
DAWSON, GA**

**DATA FOR PROPOSED DTV  
DIRECTIONAL TRANSMITTING ANTENNA**

- A. **Antenna:** Dielectric THV-13A8-R C170, Circularly Polarized, Directional (Cardioid – N030°E), Side-mount Antenna.
- B. **Electrical Beam Tilt:** 0.75°
- C. **Mechanical Beam Tilt:** 0.0°
- D. 

<b><u>Maximum Power Gain</u></b>	<b><u>Horizontal Polarization</u></b>
Maximum:	22.1 (13.44 dB)
Horizontal:	20.4 (13.10 dB)
- E. **Length:** 76.6 feet (23.3 meters) not including appurtenances.
- F. **Average Power DTV:** 0.91kW
- G. **Null Fill:** 20.7%
- H. **Transmission Line:** 3" 50-ohm Heliax.
- I. **Transmission Line Loss:** 0.203dB/100-feet
- J. **Total Transmission Line:** 1,100 feet
- K. **Transmission Line Attenuation:** 2.23 dB

## ANTENNA STRUCTURE ELEVATION VIEW



OVERALL HEIGHT AGL: 334.1 M  
OVERALL HEIGHT AMSL: 472.1 M  
RADIATION CENTER AGL: 306.8 M  
RADIATION CENTER AMSL: 444.8 M  
RADIATION CENTER HAAT: 312.7 M  
AVG OF ALL NON-ODD RADIALS: 132.1 M

### COORDINATES (NAD 27):

N. LATITUDE 31° 56' 15"

W. LONGITUDE 84° 33' 15"

### TOWER REGISTRATION NUMBER:

1018782

NOTE: NOT TO SCALE

**KESSLER & GEHMAN**  
TELECOMMUNICATIONS CONSULTING ENGINEERS  
507 N.W. 60th Street, Suite C  
Gainesville, Florida 32607

**WACS-DT CHANNEL 8**

**DAWSON, GEORGIA**

20020821

EXHIBIT 3



Date	21 Aug 2002		
Call Letters	WACS-DT	Channel	8
Location	Dawson, GA		
Customer	GPTC		
Antenna Type	THV-13A8-R C170		

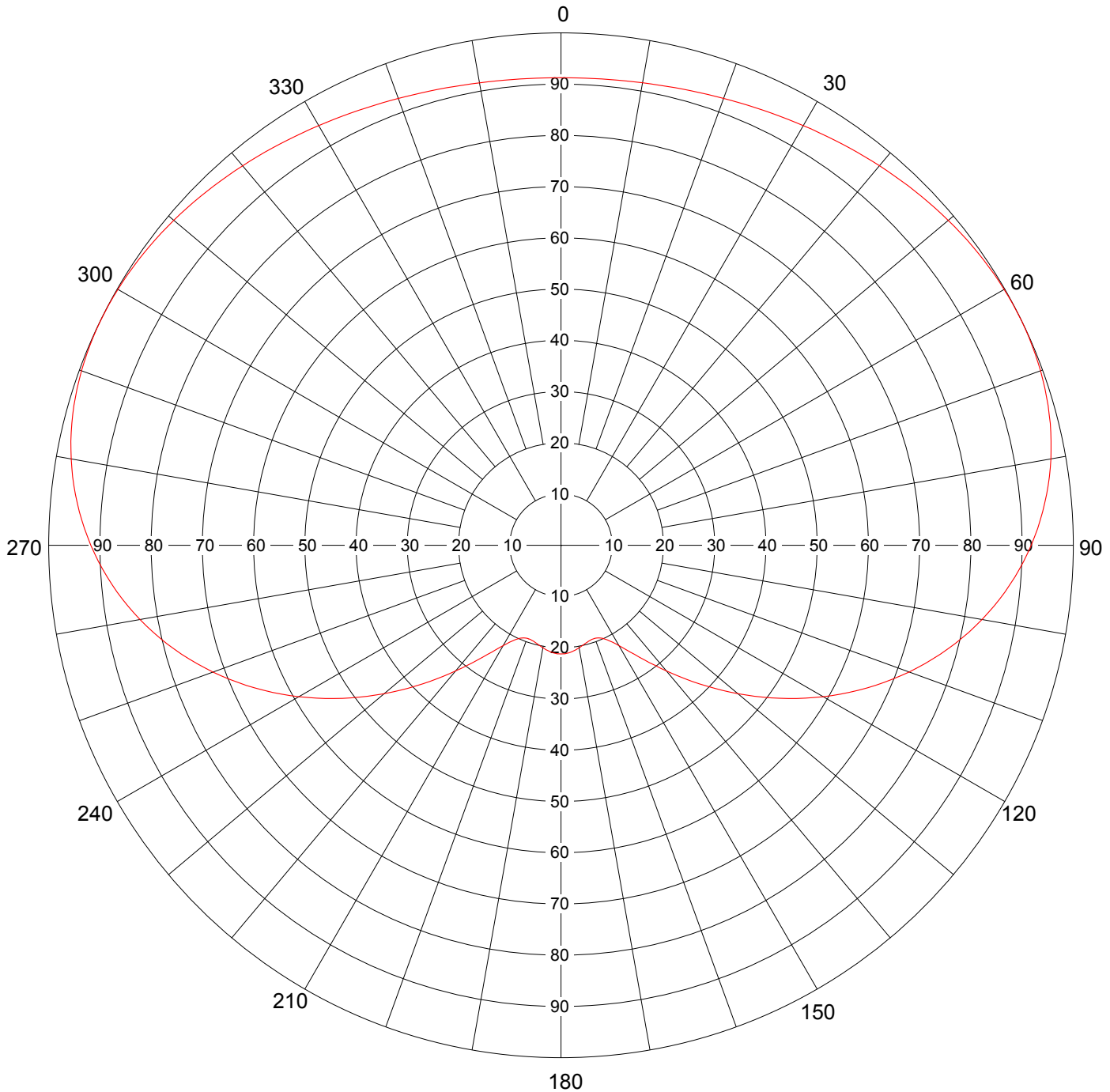
### AZIMUTH PATTERN

RMS Gain at Main Lobe  
Calculated / Measured

**1.70 (2.30 dB)**  
**Calculated**

Frequency  
Drawing #

**183 MHz**  
**THV-C170**



Remarks: Exhibit 4



Date **21 Aug 2002**  
 Call Letters **WACS-DT** Channel **8**  
 Location **Dawson, GA**  
 Customer **GPTC**  
 Antenna Type **THV-13A8-R C170**

## TABULATION OF AZIMUTH PATTERN

Azimuth Pattern Drawing # **THV-C170**

Angle	Field	Angle	Field	Angle	Field	Angle	Field	Angle	Field	Angle	Field	Angle	Field	Angle	Field
0	0.912	45	0.977	90	0.918	135	0.383	180	0.212	225	0.383	270	0.918	315	0.977
1	0.913	46	0.979	91	0.911	136	0.369	181	0.212	226	0.396	271	0.924	316	0.975
2	0.913	47	0.981	92	0.904	137	0.357	182	0.212	227	0.409	272	0.931	317	0.973
3	0.913	48	0.983	93	0.896	138	0.344	183	0.211	228	0.423	273	0.937	318	0.971
4	0.913	49	0.985	94	0.888	139	0.332	184	0.211	229	0.437	274	0.943	319	0.969
5	0.914	50	0.987	95	0.880	140	0.320	185	0.210	230	0.450	275	0.948	320	0.967
6	0.914	51	0.988	96	0.871	141	0.309	186	0.209	231	0.464	276	0.953	321	0.965
7	0.915	52	0.990	97	0.862	142	0.297	187	0.207	232	0.478	277	0.958	322	0.963
8	0.915	53	0.991	98	0.853	143	0.287	188	0.206	233	0.492	278	0.963	323	0.960
9	0.916	54	0.993	99	0.844	144	0.276	189	0.205	234	0.507	279	0.967	324	0.958
10	0.917	55	0.994	100	0.834	145	0.267	190	0.203	235	0.521	280	0.971	325	0.956
11	0.917	56	0.995	101	0.824	146	0.257	191	0.202	236	0.535	281	0.974	326	0.954
12	0.918	57	0.996	102	0.814	147	0.249	192	0.200	237	0.549	282	0.978	327	0.952
13	0.919	58	0.997	103	0.804	148	0.240	193	0.199	238	0.563	283	0.981	328	0.950
14	0.920	59	0.998	104	0.793	149	0.233	194	0.197	239	0.577	284	0.984	329	0.948
15	0.921	60	0.999	105	0.782	150	0.226	195	0.196	240	0.591	285	0.987	330	0.946
16	0.923	61	0.999	106	0.771	151	0.220	196	0.195	241	0.605	286	0.989	331	0.944
17	0.924	62	1.000	107	0.759	152	0.214	197	0.194	242	0.618	287	0.991	332	0.942
18	0.925	63	1.000	108	0.747	153	0.210	198	0.193	243	0.632	288	0.993	333	0.940
19	0.927	64	1.000	109	0.735	154	0.205	199	0.193	244	0.646	289	0.995	334	0.938
20	0.928	65	1.000	110	0.723	155	0.202	200	0.193	245	0.659	290	0.996	335	0.936
21	0.930	66	0.999	111	0.710	156	0.199	201	0.194	246	0.672	291	0.997	336	0.935
22	0.931	67	0.999	112	0.698	157	0.197	202	0.195	247	0.685	292	0.998	337	0.933
23	0.933	68	0.998	113	0.685	158	0.195	203	0.197	248	0.698	293	0.999	338	0.931
24	0.935	69	0.997	114	0.672	159	0.194	204	0.199	249	0.710	294	1.000	339	0.930
25	0.936	70	0.996	115	0.659	160	0.193	205	0.202	250	0.723	295	1.000	340	0.928
26	0.938	71	0.995	116	0.646	161	0.193	206	0.205	251	0.735	296	1.000	341	0.927
27	0.940	72	0.993	117	0.632	162	0.193	207	0.210	252	0.747	297	1.000	342	0.925
28	0.942	73	0.991	118	0.618	163	0.194	208	0.214	253	0.759	298	1.000	343	0.924
29	0.944	74	0.989	119	0.605	164	0.195	209	0.220	254	0.771	299	0.999	344	0.923
30	0.946	75	0.987	120	0.591	165	0.196	210	0.226	255	0.782	300	0.999	345	0.921
31	0.948	76	0.984	121	0.577	166	0.197	211	0.233	256	0.793	301	0.998	346	0.920
32	0.950	77	0.981	122	0.563	167	0.199	212	0.240	257	0.804	302	0.997	347	0.919
33	0.952	78	0.978	123	0.549	168	0.200	213	0.249	258	0.814	303	0.996	348	0.918
34	0.954	79	0.974	124	0.535	169	0.202	214	0.257	259	0.824	304	0.995	349	0.917
35	0.956	80	0.971	125	0.521	170	0.203	215	0.267	260	0.834	305	0.994	350	0.917
36	0.958	81	0.967	126	0.507	171	0.205	216	0.276	261	0.844	306	0.993	351	0.916
37	0.960	82	0.963	127	0.492	172	0.206	217	0.287	262	0.853	307	0.991	352	0.915
38	0.963	83	0.958	128	0.478	173	0.207	218	0.297	263	0.862	308	0.990	353	0.915
39	0.965	84	0.953	129	0.464	174	0.209	219	0.309	264	0.871	309	0.988	354	0.914
40	0.967	85	0.948	130	0.450	175	0.210	220	0.320	265	0.880	310	0.987	355	0.914
41	0.969	86	0.943	131	0.437	176	0.211	221	0.332	266	0.888	311	0.985	356	0.913
42	0.971	87	0.937	132	0.423	177	0.211	222	0.344	267	0.896	312	0.983	357	0.913
43	0.973	88	0.931	133	0.409	178	0.212	223	0.357	268	0.904	313	0.981	358	0.913
44	0.975	89	0.924	134	0.396	179	0.212	224	0.369	269	0.911	314	0.979	359	0.913

Remarks: Exhibit 5

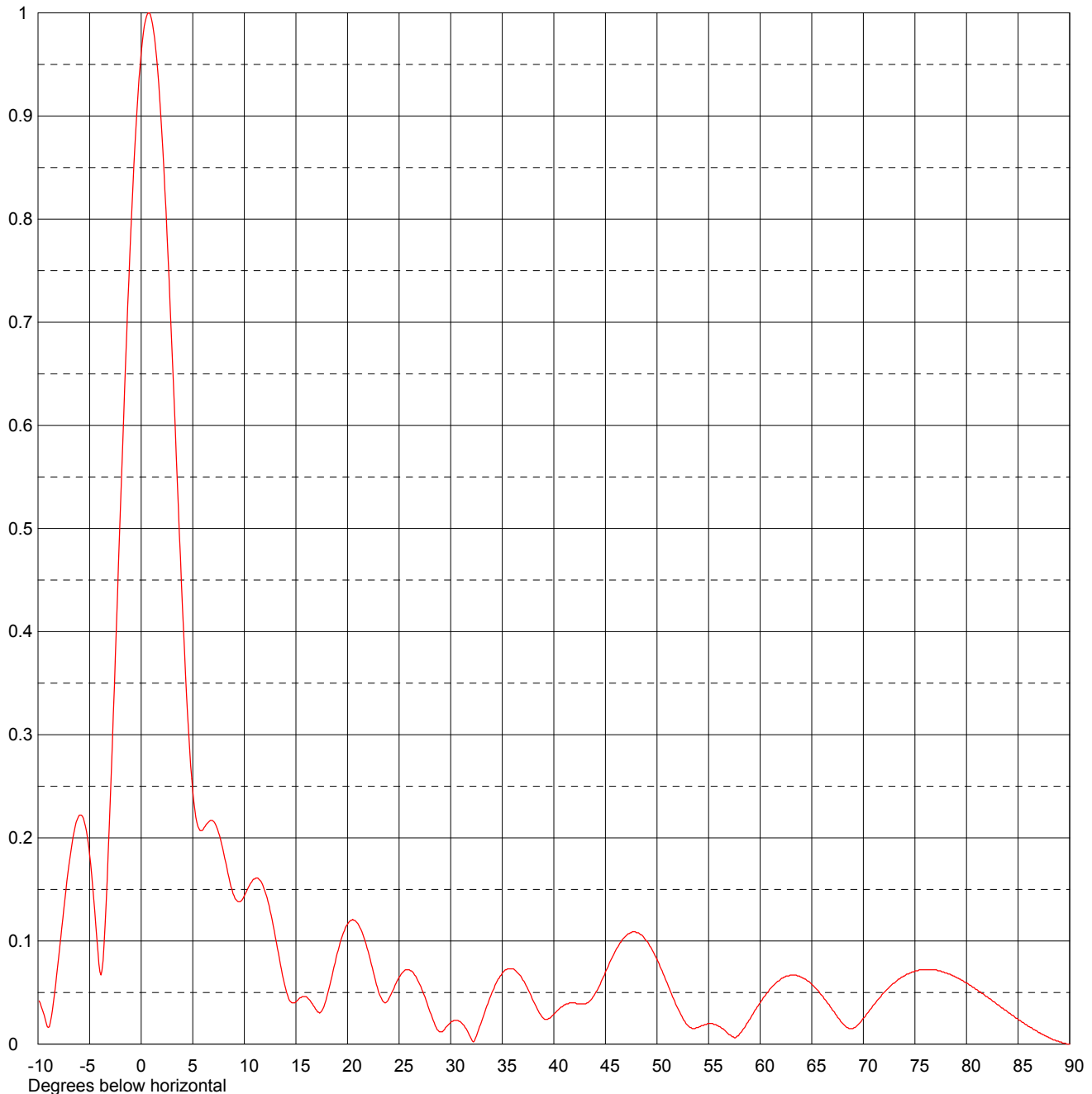




Date	21 Aug 2002	
Call Letters	WACS-DT	Channel 8
Location	Dawson, GA	
Customer	GPTC	
Antenna Type	THV-13A8-R C170	

### ELEVATION PATTERN

RMS Gain at Main Lobe	13.0 (11.14 dB)	Beam Tilt	0.70 Degrees
RMS Gain at Horizontal	12.0 (10.79 dB)	Frequency	183.00 MHz
Calculated / Measured	Calculated	Drawing #	13V130070-90



Remarks: Exhibit 6



Date **21 Aug 2002**  
 Call Letters **WACS-DT** Channel **8**  
 Location **Dawson, GA**  
 Customer **GPTC**  
 Antenna Type **THV-13A8-R C170**

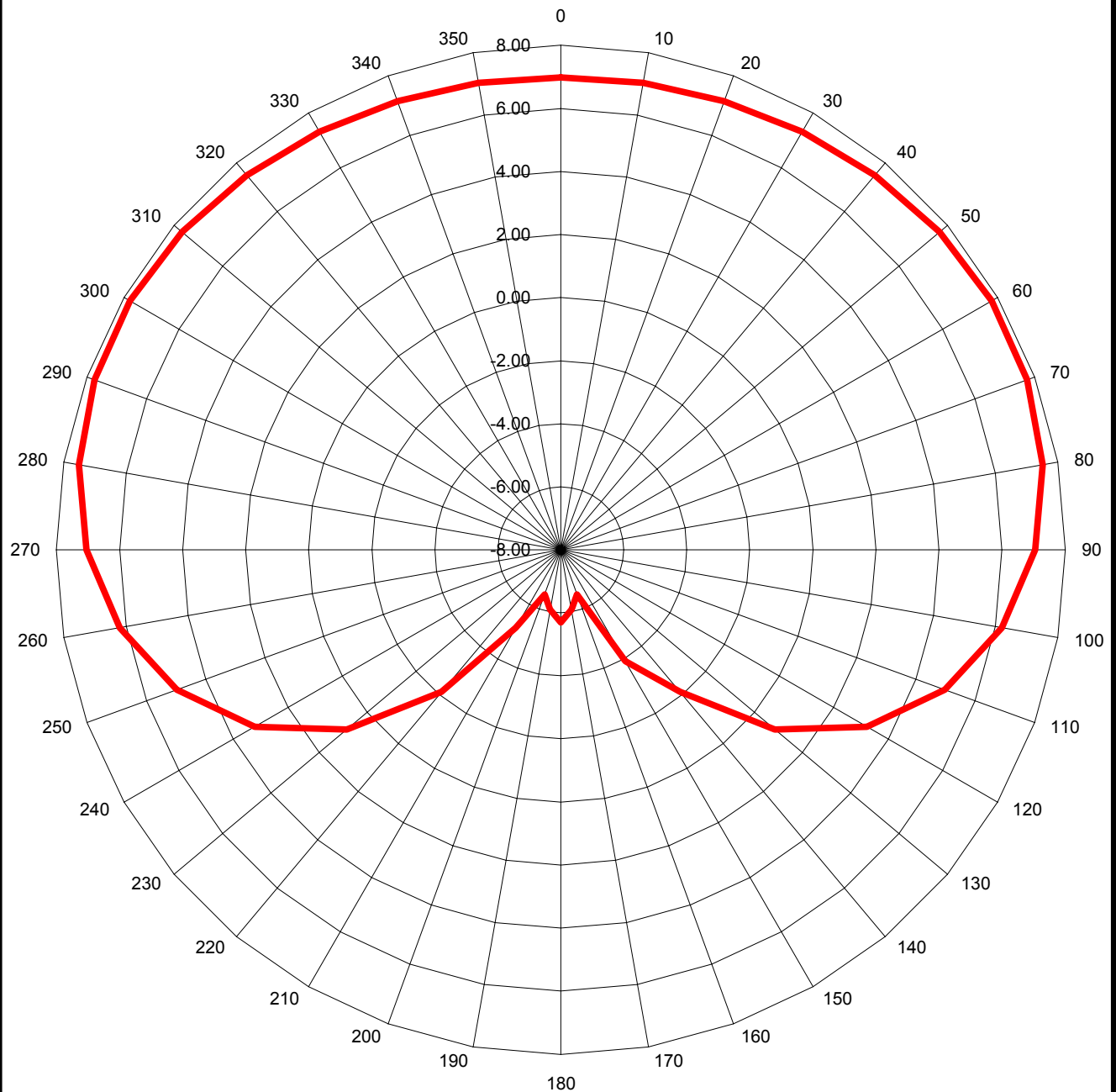
## TABULATION OF ELEVATION PATTERN

Elevation Pattern Drawing # **13V130070-90**

Angle	Field	Angle	Field	Angle	Field	Angle	Field	Angle	Field	Angle	Field
-10.0	0.043	2.4	0.808	10.6	0.156	30.5	0.023	51.0	0.059	71.5	0.044
-9.5	0.031	2.6	0.764	10.8	0.159	31.0	0.021	51.5	0.046	72.0	0.050
-9.0	0.016	2.8	0.718	11.0	0.160	31.5	0.015	52.0	0.035	72.5	0.055
-8.5	0.041	3.0	0.670	11.5	0.159	32.0	0.005	52.5	0.025	73.0	0.059
-8.0	0.084	3.2	0.621	12.0	0.148	32.5	0.008	53.0	0.018	73.5	0.063
-7.5	0.131	3.4	0.571	12.5	0.129	33.0	0.022	53.5	0.015	74.0	0.066
-7.0	0.174	3.6	0.521	13.0	0.104	33.5	0.037	54.0	0.016	74.5	0.069
-6.5	0.206	3.8	0.472	13.5	0.077	34.0	0.050	54.5	0.018	75.0	0.071
-6.0	0.222	4.0	0.424	14.0	0.054	34.5	0.061	55.0	0.020	75.5	0.072
-5.5	0.215	4.2	0.380	14.5	0.041	35.0	0.069	55.5	0.019	76.0	0.072
-5.0	0.184	4.4	0.338	15.0	0.041	35.5	0.073	56.0	0.017	76.5	0.072
-4.5	0.129	4.6	0.302	15.5	0.045	36.0	0.073	56.5	0.014	77.0	0.072
-4.0	0.070	4.8	0.270	16.0	0.046	36.5	0.069	57.0	0.009	77.5	0.071
-3.5	0.115	5.0	0.245	16.5	0.040	37.0	0.062	57.5	0.006	78.0	0.069
-3.0	0.236	5.2	0.227	17.0	0.033	37.5	0.053	58.0	0.010	78.5	0.067
-2.8	0.291	5.4	0.215	17.5	0.032	38.0	0.042	58.5	0.016	79.0	0.065
-2.6	0.348	5.6	0.209	18.0	0.046	38.5	0.032	59.0	0.024	79.5	0.062
-2.4	0.406	5.8	0.207	18.5	0.066	39.0	0.025	59.5	0.033	80.0	0.059
-2.2	0.465	6.0	0.208	19.0	0.088	39.5	0.025	60.0	0.040	80.5	0.056
-2.0	0.523	6.2	0.211	19.5	0.105	40.0	0.029	60.5	0.047	81.0	0.053
-1.8	0.580	6.4	0.214	20.0	0.116	40.5	0.034	61.0	0.054	81.5	0.049
-1.6	0.636	6.6	0.216	20.5	0.121	41.0	0.038	61.5	0.059	82.0	0.046
-1.4	0.690	6.8	0.217	21.0	0.117	41.5	0.040	62.0	0.063	82.5	0.042
-1.2	0.741	7.0	0.216	21.5	0.106	42.0	0.040	62.5	0.066	83.0	0.038
-1.0	0.789	7.2	0.213	22.0	0.090	42.5	0.039	63.0	0.067	83.5	0.035
-0.8	0.833	7.4	0.208	22.5	0.070	43.0	0.039	63.5	0.067	84.0	0.031
-0.6	0.872	7.6	0.202	23.0	0.051	43.5	0.042	64.0	0.065	84.5	0.028
-0.4	0.907	7.8	0.194	23.5	0.041	44.0	0.049	64.5	0.062	85.0	0.024
-0.2	0.937	8.0	0.185	24.0	0.044	44.5	0.058	65.0	0.058	85.5	0.021
0.0	0.961	8.2	0.176	24.5	0.054	45.0	0.070	65.5	0.053	86.0	0.017
0.2	0.980	8.4	0.166	25.0	0.065	45.5	0.081	66.0	0.047	86.5	0.014
0.4	0.992	8.6	0.157	25.5	0.071	46.0	0.091	66.5	0.040	87.0	0.011
0.6	0.999	8.8	0.150	26.0	0.072	46.5	0.099	67.0	0.033	87.5	0.009
0.8	1.000	9.0	0.144	26.5	0.067	47.0	0.105	67.5	0.026	88.0	0.006
1.0	0.994	9.2	0.140	27.0	0.058	47.5	0.108	68.0	0.020	88.5	0.004
1.2	0.983	9.4	0.138	27.5	0.046	48.0	0.108	68.5	0.016	89.0	0.002
1.4	0.966	9.6	0.138	28.0	0.031	48.5	0.106	69.0	0.015	89.5	0.001
1.6	0.944	9.8	0.140	28.5	0.018	49.0	0.100	69.5	0.019	90.0	0.000
1.8	0.917	10.0	0.144	29.0	0.012	49.5	0.092	70.0	0.025		
2.0	0.884	10.2	0.148	29.5	0.016	50.0	0.082	70.5	0.031		
2.2	0.848	10.4	0.152	30.0	0.021	50.5	0.071	71.0	0.038		

Remarks: Exhibit 7

## ERP - dBk



**DIELECTRIC MODEL THV-13A8-R C170  
DIRECTIONAL ANTENNA (CARDIOID)  
0.75 DEGREES ELECTRICAL BEAM TILT  
MAXIMUM ANTENNA GAIN IN BEAM MAXIMUM 13.44 Db  
30° ROTATION NOT TAKEN INTO CONSIDERATION IN THIS EXHIBIT**

**KESSLER & GEHMAN**  
TELECOMMUNICATIONS CONSULTING ENGINEERS  
507 N.W. 60th Street, Suite C  
Gainesville, Florida 32607

**WACS-DT CHANNEL 8  
DAWSON, GEORGIA**

20020821

EXHIBIT 8

## WACS-DT CHANNEL 8

DAWSON, GEORGIA

### TABULATION OF RELATIVE FIELDS FOR PROPOSED DIRECTIONAL ANTENNA

<u>AZIMUTH</u>	<u>RELATIVE FIELD</u>	<u>AZIMUTH</u>	<u>RELATIVE FIELD</u>
N000°E	0.912	N180°E	0.212
N010°E	0.917	N190°E	0.203
N020°E	0.928	N200°E	0.193
N030°E	0.946	N210°E	0.226
N040°E	0.967	N220°E	0.320
N050°E	0.987	N230°E	0.450
N060°E	0.999	N240°E	0.591
N070°E	0.996	N250°E	0.723
N080°E	0.971	N260°E	0.834
N090°E	0.918	N270°E	0.918
N100°E	0.834	N280°E	0.971
N110°E	0.723	N290°E	0.996
N120°E	0.591	N300°E	0.999
N130°E	0.450	N310°E	0.987
N140°E	0.320	N320°E	0.967
N150°E	0.260	N330°E	0.946
N160°E	0.193	N340°E	0.928
N170°E	0.203	N350°E	0.917

MINIMUM OF 0.193 AT N190°E & N325°E

MAXIMA OF 1.000 AT N065°E & N295°E

**30° ROTATION NOT TAKEN INTO CONSIDERATION IN THIS EXHIBIT**

**KESSLER & GEHMAN**

TELECOMMUNICATIONS CONSULTING ENGINEERS

507 N.W. 60th Street, Suite C

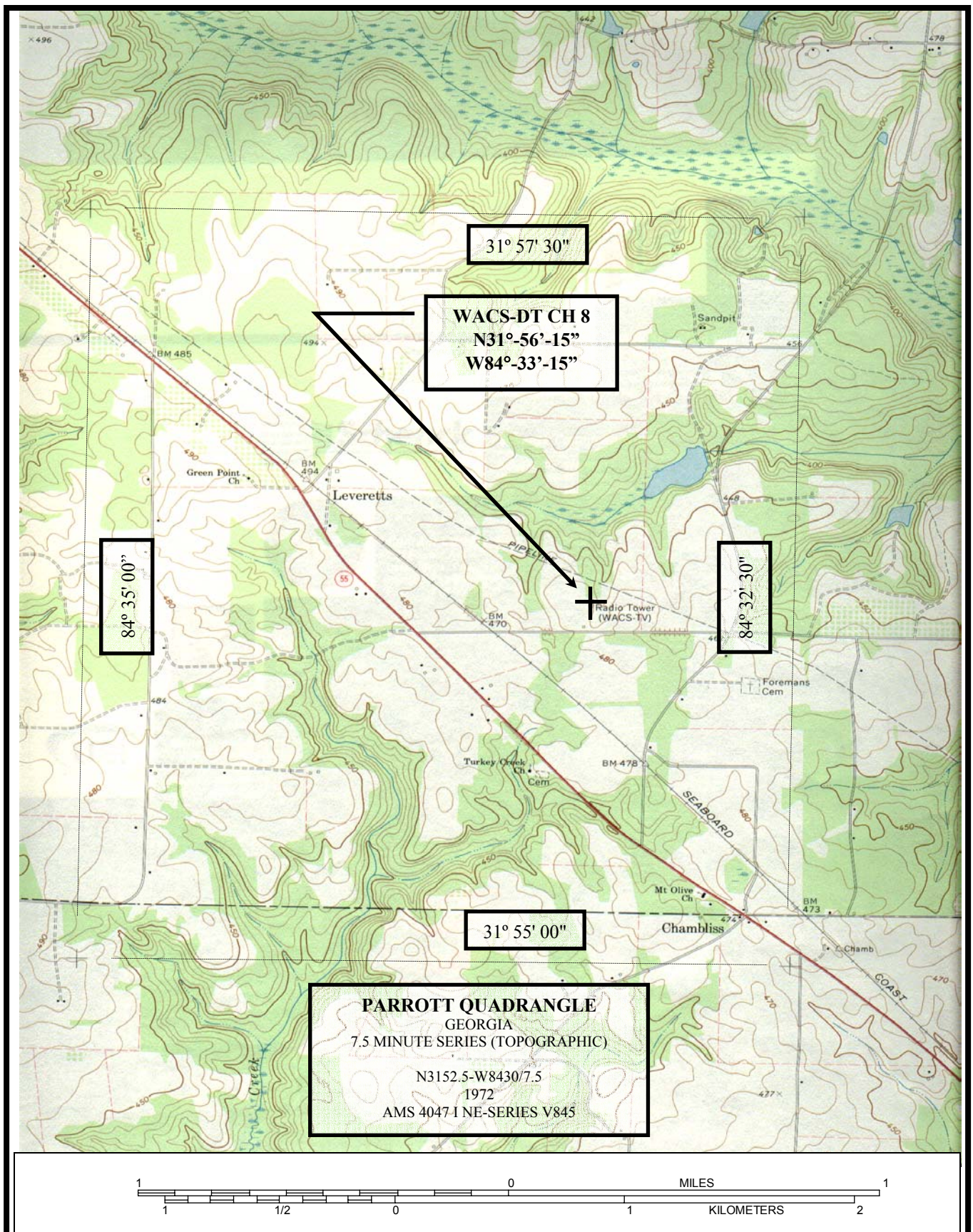
Gainesville, Florida 32607

**WACS-DT CHANNEL 8**  
**DAWSON, GEORGIA**

20020821

EXHIBIT 9





**KESSLER & GEHMAN**  
TELECOMMUNICATIONS CONSULTING ENGINEERS  
507 N.W. 60th Street, Suite C  
Gainesville, Florida 32607

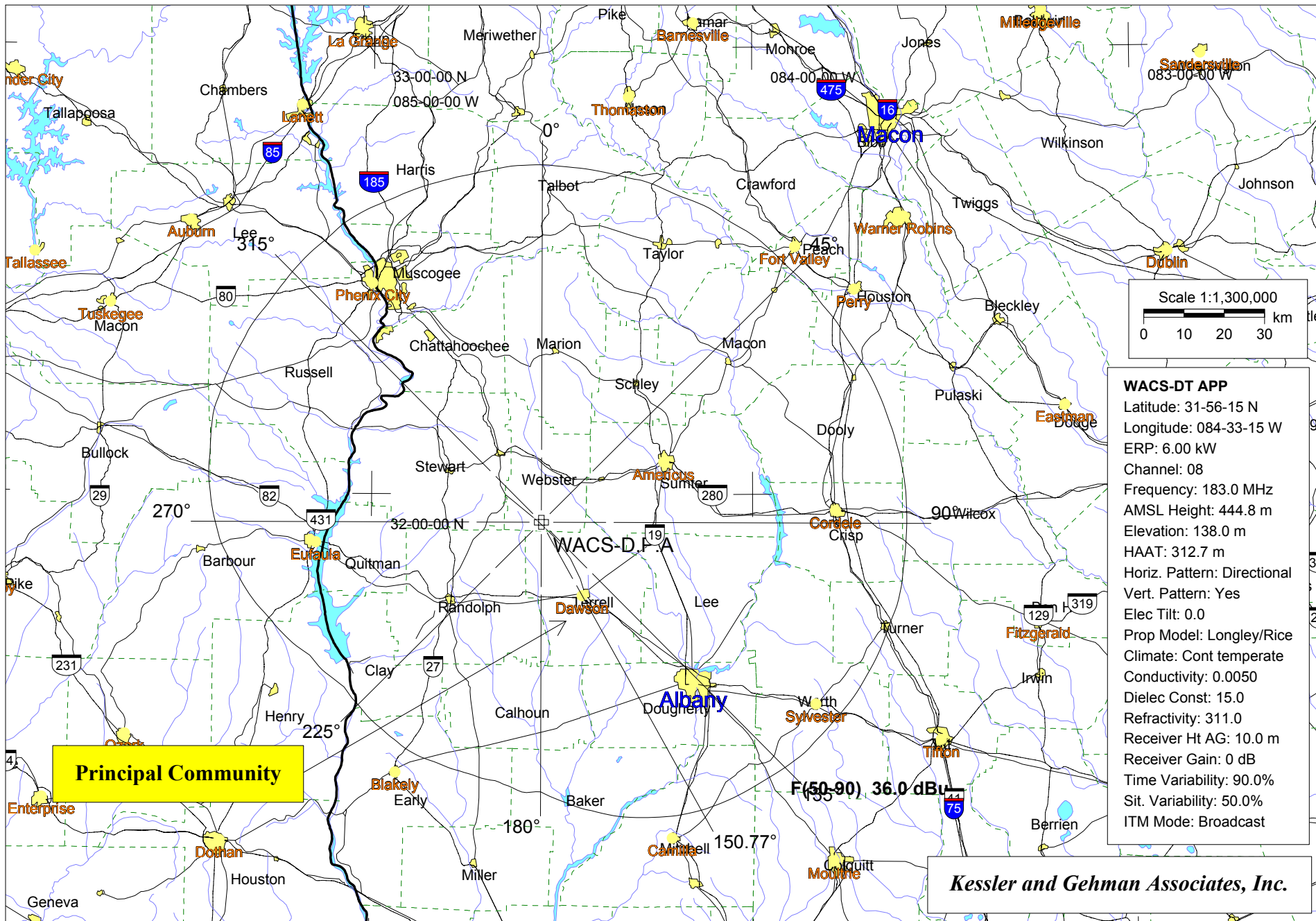
**WACS-DT CHANNEL 8**

**DAWSON, GEORGIA**

20020821

EXHIBIT 10





TV INTERFERENCE and SPACING ANALYSIS PROGRAM

Date: 08-21-2002 Time: 13:13:22

Record Selected for Analysis

WACS-D.P CUR -PROPOSED Dawson GA US  
Channel 08 ERP 6.0 kW HAAT 00312 m RCAMSL 00444 m  
Latitude 031-56-15 Longitude 0084-33-15  
Status APR Zone Border  
Dir Antenna Make CDB Model 000000000000001 Beam tilt N Ref Azimuth 0.0  
Last update 00000000 Cutoff date 00000000 Docket  
Comments  
Applicant

Cell Size for Service Analysis 2.0 km/side

Distance Increments for Longley-Rice Analysis 1.00 km

Facility meets maximum height/power limits

Azimuth (Deg)	ERP (kW)	HAAT (m)	36.0 dBu F(50,90) (km)
0.0	5.369	315.0	88.7
45.0	5.106	313.0	88.2
90.0	6.000	329.9	90.6
135.0	3.576	317.8	85.8
180.0	0.306	318.6	66.8
225.0	0.235	307.7	64.1
270.0	2.096	304.6	80.8
315.0	5.804	288.1	87.7

Evaluation toward Class A Stations

No Spacing violations or contour overlap to Class A stations

Class A Evaluation Complete

SPACING VIOLATION FOUND BETWEEN STATION

WACS-D.P 08 Dawson GA CUR PROPOSED

and station

SHORT TO: WAKA 08 SELMA AL BMLCT 20020312AAC  
 032-08-58 0086-46-51  
 Req. separation 273.6 Actual separation 211.6 Short 62.0 km

SHORT TO: WJHG-DT 08 PANAMA CITY FL BMPCDT 20010906ABJ  
 030-26- 0 0085-24-51  
 Req. separation 273.6 Actual separation 185.8 Short 87.8 km

SHORT TO: WJHG-TV 08 PANAMA CITY FL BPRM 20000328AAF  
 030-26- 0 0085-24-51  
 Req. separation 273.6 Actual separation 185.8 Short 87.8 km

SHORT TO: WGTW 08 ATHENS GA BMLET 19890727KG  
 033-48-18 0084-08-40  
 Req. separation 273.6 Actual separation 210.6 Short 63.0 km

SHORT TO: WXGA-TV 08 WAYCROSS GA BLCT 1161  
 031-13-17 0082-34-24  
 Req. separation 273.6 Actual separation 204.1 Short 69.5 km

SHORT TO: WTVM 09 COLUMBUS GA BLCT 1079  
 032-19-25 0084-46-46  
 Req. separation => 11.0 <= 125.0 Actual separation 47.8 Short 77.2 ( 36.8) km

Proposed facility OK to FCC Monitoring Stations

Proposed facility OK toward West Virginia quite zone

Proposed facility OK toward Table Mountain

Proposed facility is beyond the Canadian coordination distance

Proposed facility is beyond the Mexican coordination distance

Proposed station is OK toward AM broadcast stations

\*\*\*\*\*

# Start of Interference Analysis

Channel	Proposed Station	Call	City/State	ARN	
08	WACS-D.P	Dawson	GA	CUR	PROPOSED

## Stations Potentially Affected by Proposed Station

Chan	Call	City/State	Dist(km)	Status	Application	Ref. No.
07	WCIQ	MOUNT CHEAHA AL	208.3	LIC	BLET	-405
07	WJHG-TV	PANAMA CITY FL	186.1	LIC	BLCT	-1360
07	WDCO-DT	COCHRAN GA	135.8	CP	BPEDT	-20000425AAQ





08 WACS-D.P Dawson GA 208.3 APR CUR -PROPOSED  
Proposal causes no interference

#####

## Analysis of Interference to Affected Station 2

### NTSC Baseline Analysis

Channel	Call	City/State	Application	Ref. No.
07	WJHGT	PANAMA CITY FL	DTVPLN	-NPLN0467

### Stations Potentially Affecting This Station

Chan	Call	City/State	Dist(km)	Status	Application	Ref. No.
07	WCIQ	MOUNT CHEAHA AL	341.3	PLN	DTVPLN	-NPLN0456
07	WJCT	JACKSONVILLE FL	369.0	PLN	DTVPLN	-NPLN0465
07	WDCO-DT	COCHRAN GA	305.2	PLN	DTVPLN	-DTVP0031
07	WDAMTV	LAUREL MS	386.0	PLN	DTVPLN	-NPLN0482

Results for:	7N FL PANAMA CITY	DTVPLN	NPLN0467	PLN
	POPULATION	AREA (sq km)		
within Noise Limited Contour	394083	27085.1		
not affected by terrain losses	392671	26880.7		
lost to NTSC IX	21737	629.1		
lost to additional IX by ATV	0	0.0		
lost to all IX	21737	629.1		

### Analysis of current record

Channel	Call	City/State	Application	Ref. No.
07	WJHG-TV	PANAMA CITY FL	BLCT	-1360

### Stations Potentially Affecting This Station

Chan	Call	City/State	Dist(km)	Status	Application	Ref. No.
07	WCIQ	MOUNT CHEAHA AL	341.3	LIC	BLET	-405
07	WJCT	JACKSONVILLE FL	369.0	LIC	BLET	-19851004KG
07	WDCO-DT	COCHRAN GA	305.2	CP	BPEDT	-20000425AAQ
07	WDCO-DT	COCHRAN GA	305.2	PLN	DTVPLN	-DTVP0031
07	WDAM-TV	LAUREL MS	386.0	LIC	BLCT	-2375
08	WJHG-DT	PANAMA CITY FL	0.0	APP	BMPCDT	-20010906ABJ
08	WJHG-TV	PANAMA CITY FL	0.0	APP	BPRM	-20000328AAF
08	WACS-D.P Dawson GA		186.1	APR	CUR	-PROPOSED

Proposal causes no interference

#####

## Analysis of Interference to Affected Station 3

### DTV Baseline Analysis

Channel	Call	City/State	Application	Ref. No.
07	WDCO-DT	COCHRAN GA	DTVPLN	-DTVP0031

### Stations Potentially Affecting This Station

Chan	Call	City/State	Dist(km)	Status	Application	Ref. No.
07	WCIQ	MOUNT CHEAHA AL	263.6	PLN	DTVPLN	-NPLN0456
07	WJCT	JACKSONVILLE FL	291.0	PLN	DTVPLN	-NPLN0465
07	WJHGTV	PANAMA CITY FL	305.2	PLN	DTVPLN	-NPLN0467
07	WITV	CHARLESTON SC	336.4	PLN	DTVPLN	-NPLN0499
07	WSPATV	SPARTANBURG SC	313.1	PLN	DTVPLN	-NPLN0500
08	WGTV	ATHENS GA	170.0	PLN	DTVPLN	-NPLN0528
08	WXGATV	WAYCROSS GA	152.9	PLN	DTVPLN	-NPLN0529

Results for: 7A GA COCHRAN DTVPLN DTVP0031 PLN  
 HAAT 350.0 m, ATV ERP 4.8 kW

	POPULATION	AREA (sq km)
within Noise Limited Contour	553110	21511.0
not affected by terrain losses	552191	21317.6
lost to NTSC IX	15529	713.1
lost to additional IX by ATV	0	0.0
lost to ATV IX only	0	0.0
lost to all IX	15529	713.1

#### NTSC Baseline Analysis

Channel	Call	City/State	Application	Ref. No.
29	WDCOTV	COCHRAN GA	DTVPLN	-NPLN1354

#### Stations Potentially Affecting This Station

Chan	Call	City/State	Dist(km)	Status	Application	Ref. No.
22	WJCL	SAVANNAH GA	185.8	PLN	DTVPLN	-NPLN1138
28	WJSPTV	COLUMBUS GA	141.9	PLN	DTVPLN	-NPLN1329
28	WTGS	HARDEEVILLE SC	185.9	PLN	DTVPLN	-NPLN1339
29	NEW	SELMA AL	352.3	PLN	DTVPLN	-NPLN1348
29	WPGX-DT	PANAMA CITY FL	316.1	PLN	DTVPLN	-DTVP0739
29	WNTV	GREENVILLE SC	285.5	PLN	DTVPLN	-NPLN1366
29	WTCI-DT	CHATTANOOGA TN	357.2	PLN	DTVPLN	-DTVP0766
30	WFXL-DT	ALBANY GA	138.9	PLN	DTVPLN	-DTVP0781
30	WPBA	ATLANTA GA	175.1	PLN	DTVPLN	-NPLN1380
30	WAGT-DT	AUGUSTA GA	169.2	PLN	DTVPLN	-DTVP0782
31	WFXL	ALBANY GA	138.9	PLN	DTVPLN	-NPLN1403
32	WPGA-DT	PERRY GA	42.5	PLN	DTVPLN	-DTVP0861
36	WATL	ATLANTA GA	179.8	PLN	DTVPLN	-NPLN1516
36	WCES-DT	WRENS GA	126.0	PLN	DTVPLN	-DTVP1009
44	WGVP	VALDOSTA GA	144.7	PLN	DTVPLN	-NPLN1657

Results for: 29N GA COCHRAN DTVPLN NPLN1354 PLN

	POPULATION	AREA (sq km)
within Noise Limited Contour	553142	21527.2
not affected by terrain losses	552542	21422.4
lost to NTSC IX	32760	1571.3
lost to additional IX by ATV	0	0.0
lost to all IX	32760	1571.3

#### Analysis of current record

Channel	Call	City/State	Application	Ref. No.
07	WDCO-DT	COCHRAN GA	BPEDT	-20000425AAQ

#### Stations Potentially Affecting This Station

Chan	Call	City/State	Dist(km)	Status	Application	Ref. No.
07	WCIQ	MOUNT CHEAHA AL	263.6	LIC	BLET	-405
07	WJCT	JACKSONVILLE FL	291.0	LIC	BLET	-19851004KG
07	WJHG-TV	PANAMA CITY FL	305.2	LIC	BLCT	-1360
07	WITV	CHARLESTON SC	336.4	LIC	BLET	-19900809KE
07	WSPA-TV	SPARTANBURG SC	313.1	CP	BPCT	-20000428ABA
07	NEW	KNOXVILLE TN	398.4	ADD	BPRM	-20000717ADM
08	WGTV	ATHENS GA	170.0	LIC	BMLET	-19890727KG
08	WXGA-TV	WAYCROSS GA	152.9	LIC	BLCT	-1161
08	WACS-D.P	Dawson GA	135.8	APR	CUR	-PROPOSED

Total scenarios = 1

Result key: 1  
Scenario 1 Affected station 3  
Before Analysis

Results for: 7A GA COCHRAN BPEDT 20000425AAQ CP  
HAAT 369.0 m, ATV ERP 22.0 kW

	POPULATION	AREA (sq km)
within Noise Limited Contour	719795	33940.1
not affected by terrain losses	717839	33509.4
lost to NTSC IX	16051	966.2
lost to additional IX by ATV	0	0.0
lost to ATV IX only	0	0.0
lost to all IX	16051	966.2

Potential Interferring Stations Included in above Scenario 1

7N AL MOUNT CHEAHA	BLET	405	LIC
7N FL JACKSONVILLE	BLET	19851004KG	LIC
7N FL PANAMA CITY	BLCT	1360	LIC
7N SC CHARLESTON	BLET	19900809KE	LIC
7N SC SPARTANBURG	BPCT	20000428ABA	CP

After Analysis

Results for: 7A GA COCHRAN BPEDT 20000425AAQ CP  
HAAT 369.0 m, ATV ERP 22.0 kW

	POPULATION	AREA (sq km)
within Noise Limited Contour	719795	33940.1
not affected by terrain losses	717839	33509.4
lost to NTSC IX	16051	966.2
lost to additional IX by ATV	0	0.0
lost to ATV IX only	8710	32.2
lost to all IX	16051	966.2

Potential Interferring Stations Included in above Scenario 1

7N AL MOUNT CHEAHA	BLET	405	LIC
7N FL JACKSONVILLE	BLET	19851004KG	LIC
7N FL PANAMA CITY	BLCT	1360	LIC
7N SC CHARLESTON	BLET	19900809KE	LIC
7N SC SPARTANBURG	BPCT	20000428ABA	CP
8A GA Dawson	CUR	PROPOSED	APR

\*Percent Service lost without proposal: -30.8 to BPEDT 20000425AAQ

\*Percent Service lost with proposal: -30.8 to BPEDT 20000425AAQ

#####

Analysis of Interference to Affected Station 4

Analysis of current record

Channel	Call	City/State	Application	Ref. No.
07	WDCO-DT	COCHRAN GA	DTVPLN	-DTVP0031

Stations Potentially Affecting This Station

Chan	Call	City/State	Dist(km)	Status	Application	Ref. No.
07	WCIQ	MOUNT CHEAHA AL	263.6	LIC	BLET	-405
07	WJCT	JACKSONVILLE FL	291.0	LIC	BLET	-19851004KG
07	WJHG-TV	PANAMA CITY FL	305.2	LIC	BLCT	-1360
07	WITV	CHARLESTON SC	336.4	LIC	BLET	-19900809KE
07	WSPA-TV	SPARTANBURG SC	313.1	CP	BPCT	-20000428ABA
07	NEW	KNOXVILLE TN	398.4	ADD	BPRM	-20000717ADM
08	WGTV	ATHENS GA	170.0	LIC	BMLET	-19890727KG
08	WXGA-TV	WAYCROSS GA	152.9	LIC	BLCT	-1161
08	WACS-D.P	Dawson GA	135.8	APR	CUR	-PROPOSED

Proposal causes no interference

#####

Analysis of Interference to Affected Station 5

NTSC Baseline Analysis

Channel	Call	City/State	Application	Ref. No.
08	WAKA	SELMA AL	DTVPLN	-NPLN0517

Stations Potentially Affecting This Station

Chan	Call	City/State	Dist(km)	Status	Application	Ref. No.
07	WCIQ	MOUNT CHEAHA AL	174.0	PLN	DTVPLN	-NPLN0456
08	WGTV	ATHENS GA	307.0	PLN	DTVPLN	-NPLN0528
08	WXGATV	WAYCROSS GA	411.0	PLN	DTVPLN	-NPLN0529
08	WVUE	NEW ORLEANS LA	388.1	PLN	DTVPLN	-NPLN0537
09	WALA-DT	MOBILE AL	189.0	PLN	DTVPLN	-DTVP0052
09	WTVM	COLUMBUS GA	189.1	PLN	DTVPLN	-NPLN0588

Results for:	8N AL SELMA	DTVPLN	NPLN0517	PLN
		POPULATION	AREA (sq km)	
within Noise Limited Contour	679545	40209.0		
not affected by terrain losses	653950	37336.9		
lost to NTSC IX	22041	2359.1		
lost to additional IX by ATV	0	0.0		
lost to all IX	22041	2359.1		

Analysis of current record

Channel	Call	City/State	Application	Ref. No.
---------	------	------------	-------------	----------

08 WAKA SELMA AL BMLCT -20020312AAC

Stations Potentially Affecting This Station

Chan	Call	City/State	Dist(km)	Status	Application	Ref. No.
07	WCIQ	MOUNT CHEAHA AL	174.0	LIC	BLET	-405
08	WJHG-DT	PANAMA CITY FL	230.7	APP	BMPCDT	-20010906ABJ
08	WJHG-TV	PANAMA CITY FL	230.7	APP	BPRM	-20000328AAF
08	WGTV	ATHENS GA	307.0	LIC	BMLET	-19890727KG
08	WXGA-TV	WAYCROSS GA	411.1	LIC	BLCT	-1161
08	WVUE	NEW ORLEANS LA	388.0	LIC	BMLCT	-19890510KF
08	WMEA-TV	BOONEVILLE MS	334.2	APP	BPRM	-20000328AAC
08	WTVA-TV	TUPELO MS	282.3	APP	BPRM	-20000731AAC
08	WTVA	TUPELO MS	282.3	APP	BMPCDT	-20000502AAR
09	WJSU-TV	ANNISTON AL	165.5	APP	BPRM	-20010418ABL
09	WALA-DT	MOBILE AL	188.9	CP	BPCDT	-19991028AEO
09	WALA-DT	MOBILE AL	188.9	PLN	DTVPLN	-DTVP0052
09	WTVM	COLUMBUS GA	189.2	LIC	BLCT	-1079
08	WACS-D.P	Dawson GA	211.1	APR	CUR	-PROPOSED

Total scenarios = 5

Result key: 2  
 Scenario 1 Affected station 5  
 Before Analysis

Results for: 8N AL SELMA	BMLCT	20020312AAC	LIC
	POPULATION	AREA (sq km)	
within Noise Limited Contour	679557	40205.3	
not affected by terrain losses	656061	37397.8	
lost to NTSC IX	24760	2342.9	
lost to additional IX by ATV	0	0.0	
lost to all IX	24760	2342.9	

Potential Interfering Stations Included in above Scenario 1

7N AL MOUNT CHEAHA	BLET	405	LIC
8N GA ATHENS	BMLET	19890727KG	LIC
8N LA NEW ORLEANS	BMLCT	19890510KF	LIC
9N GA COLUMBUS	BLCT	1079	LIC

After Analysis

Results for: 8N AL SELMA	BMLCT	20020312AAC	LIC
	POPULATION	AREA (sq km)	
within Noise Limited Contour	679557	40205.3	
not affected by terrain losses	656061	37397.8	
lost to NTSC IX	24760	2342.9	
lost to additional IX by ATV	7664	468.6	
lost to all IX	32424	2811.5	

Potential Interfering Stations Included in above Scenario 1

7N AL MOUNT CHEAHA	BLET	405	LIC
8N GA ATHENS	BMLET	19890727KG	LIC
8N LA NEW ORLEANS	BMLCT	19890510KF	LIC

9N GA COLUMBUS	BLCT	1079	LIC	
8A GA Dawson	CUR	PROPOSED	APR	
*Percent new DTV interference without proposal:			0.0	BMLCT 20020312AAC
*Percent new DTV interference with proposal:			1.1	BMLCT 20020312AAC

Result key: 3  
Scenario 2 Affected station 5  
Before Analysis

Results for: 8N AL SELMA	BMLCT	20020312AAC	LIC
	POPULATION	AREA (sq km)	
within Noise Limited Contour	679557	40205.3	
not affected by terrain losses	656061	37397.8	
lost to NTSC IX	24760	2342.9	
lost to additional IX by ATV	20686	1296.7	
lost to all IX	45446	3639.6	

Potential Interfering Stations Included in above Scenario 2

7N AL MOUNT CHEAHA	BLET	405	LIC
8N GA ATHENS	BMLET	19890727KG	LIC
8N LA NEW ORLEANS	BMLCT	19890510KF	LIC
9N GA COLUMBUS	BLCT	1079	LIC
8A FL PANAMA CITY	BMPCDT	20010906ABJ	APP
8A MS TUPELO	BPRM	20000731AAC	APP
9A AL ANNISTON	BPRM	20010418ABL	APP

After Analysis

Results for: 8N AL SELMA	BMLCT	20020312AAC	LIC
	POPULATION	AREA (sq km)	
within Noise Limited Contour	679557	40205.3	
not affected by terrain losses	656061	37397.8	
lost to NTSC IX	24760	2342.9	
lost to additional IX by ATV	28350	1765.3	
lost to all IX	53110	4108.2	

Potential Interfering Stations Included in above Scenario 2

7N AL MOUNT CHEAHA	BLET	405	LIC
8N GA ATHENS	BMLET	19890727KG	LIC
8N LA NEW ORLEANS	BMLCT	19890510KF	LIC
9N GA COLUMBUS	BLCT	1079	LIC
8A FL PANAMA CITY	BMPCDT	20010906ABJ	APP
8A MS TUPELO	BPRM	20000731AAC	APP
9A AL ANNISTON	BPRM	20010418ABL	APP
8A GA Dawson	CUR	PROPOSED	APR
*Percent new DTV interference without proposal:			3.0 BMLCT 20020312AAC
*Percent new DTV interference with proposal:			4.2 BMLCT 20020312AAC

Result key: 4  
Scenario 3 Affected station 5  
Before Analysis

Results for: 8N AL SELMA	BMLCT	20020312AAC	LIC
--------------------------	-------	-------------	-----

	POPULATION	AREA (sq km)
within Noise Limited Contour	679557	40205.3
not affected by terrain losses	656061	37397.8
lost to NTSC IX	24760	2342.9
lost to additional IX by ATV	21512	1316.9
lost to all IX	46272	3659.8

Potential Interferring Stations Included in above Scenario 3

7N AL MOUNT CHEAHA	BLET	405	LIC
8N GA ATHENS	BMLET	19890727KG	LIC
8N LA NEW ORLEANS	BMLCT	19890510KF	LIC
9N GA COLUMBUS	BLCT	1079	LIC
8A FL PANAMA CITY	BMPCDT	20010906ABJ	APP
8A MS TUPELO	BMPCDT	20000502AAR	APP
9A AL ANNISTON	BPRM	20010418ABL	APP

After Analysis

Results for: 8N AL SELMA	BMLCT	20020312AAC	LIC
	POPULATION	AREA (sq km)	
within Noise Limited Contour	679557	40205.3	
not affected by terrain losses	656061	37397.8	
lost to NTSC IX	24760	2342.9	
lost to additional IX by ATV	29176	1785.5	
lost to all IX	53936	4128.4	

Potential Interferring Stations Included in above Scenario 3

7N AL MOUNT CHEAHA	BLET	405	LIC
8N GA ATHENS	BMLET	19890727KG	LIC
8N LA NEW ORLEANS	BMLCT	19890510KF	LIC
9N GA COLUMBUS	BLCT	1079	LIC
8A FL PANAMA CITY	BMPCDT	20010906ABJ	APP
8A MS TUPELO	BMPCDT	20000502AAR	APP
9A AL ANNISTON	BPRM	20010418ABL	APP
8A GA Dawson	CUR	PROPOSED	APR
*Percent new DTV interference without proposal:		3.2	BMLCT 20020312AAC
*Percent new DTV interference with proposal:		4.3	BMLCT 20020312AAC

Result key: 5  
 Scenario 4 Affected station 5  
 Before Analysis

Results for: 8N AL SELMA	BMLCT	20020312AAC	LIC
	POPULATION	AREA (sq km)	
within Noise Limited Contour	679557	40205.3	
not affected by terrain losses	656061	37397.8	
lost to NTSC IX	24760	2342.9	
lost to additional IX by ATV	25254	1482.5	
lost to all IX	50014	3825.4	

Potential Interferring Stations Included in above Scenario 4

7N AL MOUNT CHEAHA	BLET	405	LIC
8N GA ATHENS	BMLET	19890727KG	LIC



8N LA NEW ORLEANS	BMLCT	19890510KF	LIC
9N GA COLUMBUS	BLCT	1079	LIC
8A FL PANAMA CITY	BPRM	20000328AAF	APP
8A MS TUPELO	BPRM	20000731AAC	APP
9A AL ANNISTON	BPRM	20010418ABL	APP

#### After Analysis

Results for: 8N AL SELMA	BMLCT	20020312AAC	LIC
	POPULATION	AREA (sq km)	
within Noise Limited Contour	679557	40205.3	
not affected by terrain losses	656061	37397.8	
lost to NTSC IX	24760	2342.9	
lost to additional IX by ATV	32436	1914.7	
lost to all IX	57196	4257.6	

Potential Interferring Stations Included in above Scenario 4

7N AL MOUNT CHEAHA	BLET	405	LIC
8N GA ATHENS	BMLET	19890727KG	LIC
8N LA NEW ORLEANS	BMLCT	19890510KF	LIC
9N GA COLUMBUS	BLCT	1079	LIC
8A FL PANAMA CITY	BPRM	20000328AAF	APP
8A MS TUPELO	BPRM	20000731AAC	APP
9A AL ANNISTON	BPRM	20010418ABL	APP
8A GA Dawson	CUR	PROPOSED	APR
*Percent new DTV interference without proposal:	3.7	BMLCT	20020312AAC
*Percent new DTV interference with proposal:	4.8	BMLCT	20020312AAC

Result key: 6  
 Scenario 5 Affected station 5  
 Before Analysis

Results for: 8N AL SELMA	BMLCT	20020312AAC	LIC
	POPULATION	AREA (sq km)	
within Noise Limited Contour	679557	40205.3	
not affected by terrain losses	656061	37397.8	
lost to NTSC IX	24760	2342.9	
lost to additional IX by ATV	26080	1502.7	
lost to all IX	50840	3845.6	

Potential Interferring Stations Included in above Scenario 5

7N AL MOUNT CHEAHA	BLET	405	LIC
8N GA ATHENS	BMLET	19890727KG	LIC
8N LA NEW ORLEANS	BMLCT	19890510KF	LIC
9N GA COLUMBUS	BLCT	1079	LIC
8A FL PANAMA CITY	BPRM	20000328AAF	APP
8A MS TUPELO	BMPCDT	20000502AAR	APP
9A AL ANNISTON	BPRM	20010418ABL	APP

#### After Analysis

Results for: 8N AL SELMA	BMLCT	20020312AAC	LIC
	POPULATION	AREA (sq km)	
within Noise Limited Contour	679557	40205.3	

not affected by terrain losses	656061	37397.8
lost to NTSC IX	24760	2342.9
lost to additional IX by ATV	33262	1934.9
lost to all IX	58022	4277.8

Potential Interferring Stations Included in above Scenario 5

7N AL MOUNT CHEAHA	BLET	405	LIC
8N GA ATHENS	BMLET	19890727KG	LIC
8N LA NEW ORLEANS	BMLCT	19890510KF	LIC
9N GA COLUMBUS	BLCT	1079	LIC
8A FL PANAMA CITY	BPRM	20000328AAF	APP
8A MS TUPELO	BMPCDT	20000502AAR	APP
9A AL ANNISTON	BPRM	20010418ABL	APP
8A GA Dawson	CUR	PROPOSED	APR
*Percent new DTV interference without proposal:			3.8 BMLCT 20020312AAC
*Percent new DTV interference with proposal:			4.9 BMLCT 20020312AAC

#####

Analysis of Interference to Affected Station 6

Analysis of current record

Channel	Call	City/State	Application	Ref. No.
08	WJHG-DT	PANAMA CITY FL	BMPCDT	-20010906ABJ

Stations Potentially Affecting This Station

Chan	Call	City/State	Dist(km)	Status	Application	Ref. No.
07	WJHG-TV	PANAMA CITY FL	0.0	LIC	BLCT	-1360
08	WAKA	SELMA AL	230.7	LIC	BMLCT	-20020312AAC
08	WFLA-TV	TAMPA FL	420.1	LIC	BLCT	-19871223KF
08	WGTW	ATHENS GA	393.3	LIC	BMLET	-19890727KG
08	WXGA-TV	WAYCROSS GA	284.9	LIC	BLCT	-1161
09	WPGX	PANAMA CITY FL	22.8	APP	BPRM	-20000411AAB
09	WPGX	PANAMA CITY FL	22.8	CP MOD	BMPCDT	-20011003AAK
09	WTVM	COLUMBUS GA	218.6	LIC	BLCT	-1079
08	WACS-D.P	Dawson GA	186.1	APR	CUR	-PROPOSED

Total scenarios = 2

Result key: 7  
Scenario 1 Affected station 6  
Before Analysis

Results for: 8A FL PANAMA CITY BMPCDT 20010906ABJ APP  
HAAT 253.0 m, ATV ERP 52.0 kW

	POPULATION	AREA (sq km)
within Noise Limited Contour	324644	27314.2
not affected by terrain losses	323565	27234.0
lost to NTSC IX	4693	441.2
lost to additional IX by ATV	2383	1195.2
lost to ATV IX only	2383	1199.3

lost to all IX 7076 1636.4

Potential Interferring Stations Included in above Scenario 1

8N AL SELMA	BMLCT	20020312AAC	LIC
8N GA WAYCROSS	BLCT	1161	LIC
9A FL PANAMA CITY	BMPCDT	20011003AAK	CP

After Analysis

Results for: 8A FL PANAMA CITY BMPCDT 20010906ABJ APP  
 HAAT 253.0 m, ATV ERP 52.0 kW

	POPULATION	AREA (sq km)
within Noise Limited Contour	324644	27314.2
not affected by terrain losses	323565	27234.0
lost to NTSC IX	4693	441.2
lost to additional IX by ATV	2532	1215.3
lost to ATV IX only	2873	1235.4
lost to all IX	7225	1656.5

Potential Interferring Stations Included in above Scenario 1

8N AL SELMA	BMLCT	20020312AAC	LIC
8N GA WAYCROSS	BLCT	1161	LIC
9A FL PANAMA CITY	BMPCDT	20011003AAK	CP
8A GA Dawson	CUR	PROPOSED	APR
*Percent Service lost without proposal:	0.0	to BMPCDT	20010906ABJ
*Percent Service lost with proposal:	0.0	to BMPCDT	20010906ABJ

Result key: 8  
 Scenario 2 Affected station 6  
 Before Analysis

Results for: 8A FL PANAMA CITY BMPCDT 20010906ABJ APP  
 HAAT 253.0 m, ATV ERP 52.0 kW

	POPULATION	AREA (sq km)
within Noise Limited Contour	324644	27314.2
not affected by terrain losses	323565	27234.0
lost to NTSC IX	4693	441.2
lost to additional IX by ATV	2383	1195.2
lost to ATV IX only	2383	1199.3
lost to all IX	7076	1636.4

Potential Interferring Stations Included in above Scenario 2

8N AL SELMA	BMLCT	20020312AAC	LIC
8N GA WAYCROSS	BLCT	1161	LIC
9A FL PANAMA CITY	BPRM	20000411AAB	APP

After Analysis

Results for: 8A FL PANAMA CITY BMPCDT 20010906ABJ APP  
 HAAT 253.0 m, ATV ERP 52.0 kW

	POPULATION	AREA (sq km)
within Noise Limited Contour	324644	27314.2
not affected by terrain losses	323565	27234.0

lost to NTSC IX	4693	441.2
lost to additional IX by ATV	2532	1215.3
lost to ATV IX only	2873	1235.4
lost to all IX	7225	1656.5

Potential Interfering Stations Included in above Scenario 2

8N AL SELMA	BMLCT	20020312AAC	LIC
8N GA WAYCROSS	BLCT	1161	LIC
9A FL PANAMA CITY	BPRM	20000411AAB	APP
8A GA Dawson	CUR	PROPOSED	APR
*Percent Service lost without proposal:		0.0	to BMPCDT 20010906ABJ
*Percent Service lost with proposal:		0.0	to BMPCDT 20010906ABJ

#####

Analysis of Interference to Affected Station 7

Analysis of current record

Channel	Call	City/State	Application	Ref. No.
08	WJHG-TV	PANAMA CITY FL	BPRM	-20000328AAF

Stations Potentially Affecting This Station

Chan	Call	City/State	Dist(km)	Status	Application	Ref. No.
07	WJHG-TV	PANAMA CITY FL	0.0	LIC	BLCT	-1360
08	WAKA	SELMA AL	230.7	LIC	BMLCT	-20020312AAC
08	WFLA-TV	TAMPA FL	420.1	LIC	BLCT	-19871223KF
08	WGTW	ATHENS GA	393.3	LIC	BMLET	-19890727KG
08	WXGA-TV	WAYCROSS GA	284.9	LIC	BLCT	-1161
09	WPGX	PANAMA CITY FL	22.8	APP	BPRM	-20000411AAB
09	WPGX	PANAMA CITY FL	22.8	CP MOD	BMPCDT	-20011003AAK
09	WTVM	COLUMBUS GA	218.6	LIC	BLCT	-1079
08	WACS-D.P	Dawson GA	186.1	APR	CUR	-PROPOSED

Total scenarios = 2

Result key: 9  
 Scenario 1 Affected station 7  
 Before Analysis

Results for: 8A FL PANAMA CITY BPRM 20000328AAF APP  
 HAAT 265.0 m, ATV ERP 27.0 kW

	POPULATION	AREA (sq km)
within Noise Limited Contour	345555	25730.1
not affected by terrain losses	344697	25662.0
lost to NTSC IX	10738	449.0
lost to additional IX by ATV	5657	1655.7
lost to ATV IX only	5657	1687.8
lost to all IX	16395	2104.8

Potential Interfering Stations Included in above Scenario 1

8N AL SELMA	BMLCT	20020312AAC	LIC
8N GA WAYCROSS	BLCT	1161	LIC
9A FL PANAMA CITY	BMPCDT	20011003AAK	CP

After Analysis

Results for: 8A FL PANAMA CITY BPRM 20000328AAF APP  
 HAAT 265.0 m, ATV ERP 27.0 kW

	POPULATION	AREA (sq km)
within Noise Limited Contour	345555	25730.1
not affected by terrain losses	344697	25662.0
lost to NTSC IX	10738	449.0
lost to additional IX by ATV	5732	1667.8
lost to ATV IX only	5741	1711.9
lost to all IX	16470	2116.8

Potential Interferring Stations Included in above Scenario 1

8N AL SELMA	BMLCT	20020312AAC	LIC
8N GA WAYCROSS	BLCT	1161	LIC
9A FL PANAMA CITY	BMPCDT	20011003AAK	CP
8A GA Dawson	CUR	PROPOSED	APR
*Percent Service lost without proposal:	0.0	to BPRM	20000328AAF
*Percent Service lost with proposal:	0.0	to BPRM	20000328AAF

Result key: 10  
 Scenario 2 Affected station 7  
 Before Analysis

Results for: 8A FL PANAMA CITY BPRM 20000328AAF APP  
 HAAT 265.0 m, ATV ERP 27.0 kW

	POPULATION	AREA (sq km)
within Noise Limited Contour	345555	25730.1
not affected by terrain losses	344697	25662.0
lost to NTSC IX	10738	449.0
lost to additional IX by ATV	5650	1647.7
lost to ATV IX only	5650	1679.8
lost to all IX	16388	2096.7

Potential Interferring Stations Included in above Scenario 2

8N AL SELMA	BMLCT	20020312AAC	LIC
8N GA WAYCROSS	BLCT	1161	LIC
9A FL PANAMA CITY	BPRM	20000411AAB	APP

After Analysis

Results for: 8A FL PANAMA CITY BPRM 20000328AAF APP  
 HAAT 265.0 m, ATV ERP 27.0 kW

	POPULATION	AREA (sq km)
within Noise Limited Contour	345555	25730.1
not affected by terrain losses	344697	25662.0
lost to NTSC IX	10738	449.0
lost to additional IX by ATV	5725	1659.8
lost to ATV IX only	5734	1703.8
lost to all IX	16463	2108.8

Potential Interfering Stations Included in above Scenario 2

8N AL SELMA	BMLCT	20020312AAC	LIC	
8N GA WAYCROSS	BLCT	1161	LIC	
9A FL PANAMA CITY	BPRM	20000411AAB	APP	
8A GA Dawson	CUR	PROPOSED	APR	
*Percent Service lost without proposal:	0.0	to BPRM		20000328AAF
*Percent Service lost with proposal:	0.0	to BPRM		20000328AAF

#####

Analysis of Interference to Affected Station 8

#### NTSC Baseline Analysis

Channel	Call	City/State	Application	Ref. No.
08	WGTV	ATHENS GA	DTVPLN	-NPLN0528

#### Stations Potentially Affecting This Station

Chan	Call	City/State	Dist(km)	Status	Application	Ref. No.
07	WCIQ	MOUNT CHEAHA AL	158.1	PLN	DTVPLN	-NPLN0456
07	WDCO-DT	COCHRAN GA	170.0	PLN	DTVPLN	-DTVP0031
08	WAKA	SELMA AL	307.0	PLN	DTVPLN	-NPLN0517
08	WXGATV	WAYCROSS GA	322.7	PLN	DTVPLN	-NPLN0529
08	WOLO-DT	COLUMBIA SC	293.1	PLN	DTVPLN	-DTVP0049
08	WVLT-TV	KNOXVILLE TN	245.8	PLN	DTVPLN	-NPLN0565
08	WDCN	NASHVILLE TN	349.3	PLN	DTVPLN	-NPLN0566
09	WTVM	COLUMBUS GA	175.0	PLN	DTVPLN	-NPLN0588
09	WNTV-DT	GREENVILLE SC	203.1	PLN	DTVPLN	-DTVP0059
09	WTVC	CHATTANOOGA TN	185.1	PLN	DTVPLN	-NPLN0624

Results for:	8N GA ATHENS	DTVPLN	NPLN0528	PLN
		POPULATION	AREA (sq km)	
within Noise Limited Contour		3399871	30091.9	
not affected by terrain losses		3352342	28224.2	
lost to NTSC IX		88058	2401.9	
lost to additional IX by ATV		0	0.0	
lost to all IX		88058	2401.9	

#### Analysis of current record

Channel	Call	City/State	Application	Ref. No.
08	WGTV	ATHENS GA	BMLET	-19890727KG

#### Stations Potentially Affecting This Station

Chan	Call	City/State	Dist(km)	Status	Application	Ref. No.
07	WCIQ	MOUNT CHEAHA AL	158.1	LIC	BLET	-405
07	WDCO-DT	COCHRAN GA	170.0	CP	BPEDT	-20000425AAQ
07	WDCO-DT	COCHRAN GA	170.0	PLN	DTVPLN	-DTVP0031
08	WAKA	SELMA AL	307.0	LIC	BMLCT	-20020312AAC
08	WJHG-DT	PANAMA CITY FL	393.3	APP	BMPCDT	-20010906ABJ
08	WJHG-TV	PANAMA CITY FL	393.3	APP	BPRM	-20000328AAF
08	WXGA-TV	WAYCROSS GA	322.7	LIC	BLCT	-1161

08	WOLO-DT	COLUMBIA SC	293.1	PLN	DTVPLN	-DTVP0049
08	WVLT-TV	KNOXVILLE TN	245.8	LIC	BLCT	-19881223KE
08	WDCN	NASHVILLE TN	349.3	LIC	BLET	-363
09	WJSU-TV	ANNISTON AL	211.3	APP	BPRM	-20010418ABL
09	WTVM	COLUMBUS GA	175.0	LIC	BLCT	-1079
09	WNTV-DT	GREENVILLE SC	203.1	CP	BPEDT	-20000428ACZ
09	WNTV-DT	GREENVILLE SC	203.1	PLN	DTVPLN	-DTVP0059
09	WTVC	CHATTANOOGA TN	185.1	CP	BPCT	-20000418AAS
08	WACS-D.P	Dawson GA	211.1	APR	CUR	-PROPOSED

Total scenarios = 1

Result key: 11  
 Scenario 1 Affected station 8  
 Before Analysis

Results for: 8N GA ATHENS	BMLET	19890727KG	LIC
	POPULATION	AREA (sq km)	
within Noise Limited Contour	3399871	30091.9	
not affected by terrain losses	3352342	28224.2	
lost to NTSC IX	88117	2413.9	
lost to additional IX by ATV	0	0.0	
lost to all IX	88117	2413.9	

Potential Interferring Stations Included in above Scenario 1

7N AL MOUNT CHEAHA	BLET	405	LIC
8N AL SELMA	BMLCT	20020312AAC	LIC
8N GA WAYCROSS	BLCT	1161	LIC
8N TN NASHVILLE	BLET	363	LIC
9N GA COLUMBUS	BLCT	1079	LIC
9N TN CHATTANOOGA	BPCT	20000418AAS	CP

After Analysis

Results for: 8N GA ATHENS	BMLET	19890727KG	LIC
	POPULATION	AREA (sq km)	
within Noise Limited Contour	3399871	30091.9	
not affected by terrain losses	3352342	28224.2	
lost to NTSC IX	88117	2413.9	
lost to additional IX by ATV	1965	148.6	
lost to all IX	90082	2562.5	

Potential Interferring Stations Included in above Scenario 1

7N AL MOUNT CHEAHA	BLET	405	LIC
8N AL SELMA	BMLCT	20020312AAC	LIC
8N GA WAYCROSS	BLCT	1161	LIC
8N TN NASHVILLE	BLET	363	LIC
9N GA COLUMBUS	BLCT	1079	LIC
9N TN CHATTANOOGA	BPCT	20000418AAS	CP
8A GA Dawson	CUR	PROPOSED	APR

*Percent new DTV interference without proposal:	0.0	BMLET	19890727KG
*Percent new DTV interference with proposal:	0.1	BMLET	19890727KG

#####

Analysis of Interference to Affected Station 9

NTSC Baseline Analysis

Channel	Call	City/State	Application	Ref. No.
08	WXGATV	WAYCROSS GA	DTVPLN	-NPLN0529

Stations Potentially Affecting This Station

Chan	Call	City/State	Dist(km)	Status	Application	Ref. No.
07	WJCT	JACKSONVILLE FL	141.7	PLN	DTVPLN	-NPLN0465
07	WDCO-DT	COCHRAN GA	152.9	PLN	DTVPLN	-DTVP0031
08	WAKA	SELMA AL	411.0	PLN	DTVPLN	-NPLN0517
08	WFLATV	TAMPA FL	376.8	PLN	DTVPLN	-NPLN0527
08	WGTV	ATHENS GA	322.7	PLN	DTVPLN	-NPLN0528
08	WOLO-DT	COLUMBIA SC	348.6	PLN	DTVPLN	-DTVP0049
09	WVANTV	SAVANNAH GA	136.9	PLN	DTVPLN	-NPLN0589

Results for:	8N GA WAYCROSS	DTVPLN	NPLN0529	PLN
		POPULATION	AREA (sq km)	
within Noise Limited Contour	386473	29245.0		
not affected by terrain losses	384301	28806.0		
lost to NTSC IX	42538	3620.4		
lost to additional IX by ATV	0	0.0		
lost to all IX	42538	3620.4		

Analysis of current record

Channel	Call	City/State	Application	Ref. No.
08	WXGA-TV	WAYCROSS GA	BLCT	-1161

Stations Potentially Affecting This Station

Chan	Call	City/State	Dist(km)	Status	Application	Ref. No.
07	WJCT	JACKSONVILLE FL	141.7	LIC	BLET	-19851004KG
07	WDCO-DT	COCHRAN GA	152.9	CP	BPEDT	-20000425AAQ
07	WDCO-DT	COCHRAN GA	152.9	PLN	DTVPLN	-DTVP0031
08	WAKA	SELMA AL	411.1	LIC	BMLCT	-20020312AAC
08	WJHG-DT	PANAMA CITY FL	284.9	APP	BMPCDT	-20010906ABJ
08	WJHG-TV	PANAMA CITY FL	284.9	APP	BPRM	-20000328AAF
08	WFLA-TV	TAMPA FL	376.8	LIC	BLCT	-19871223KF
08	WGTV	ATHENS GA	322.7	LIC	BMLET	-19890727KG
08	WOLO-DT	COLUMBIA SC	348.6	PLN	DTVPLN	-DTVP0049
09	WVAN-TV	SAVANNAH GA	136.9	LIC	BLET	-85
09	WXGA-TV	WAYCROSS GA	0.0	APP	BPRM	-20010327AJD
08	WACS-D.P	Dawson GA	203.8	APR	CUR	-PROPOSED

Total scenarios = 3

Result key: 12  
Scenario 1 Affected station 9  
Before Analysis

Results for:	8N GA WAYCROSS	BLCT	1161	LIC
--------------	----------------	------	------	-----



	POPULATION	AREA (sq km)
within Noise Limited Contour	386473	29245.0
not affected by terrain losses	384301	28806.0
lost to NTSC IX	42538	3620.4
lost to additional IX by ATV	0	0.0
lost to all IX	42538	3620.4

Potential Interferring Stations Included in above Scenario 1

7N FL JACKSONVILLE	BLET	19851004KG	LIC
8N FL TAMPA	BLCT	19871223KF	LIC
8N GA ATHENS	BMLET	19890727KG	LIC
9N GA SAVANNAH	BLET	85	LIC
7A GA COCHRAN	BPEDT	20000425AAQ	CP

#### After Analysis

Results for: 8N GA WAYCROSS BLCT 1161 LIC

	POPULATION	AREA (sq km)
within Noise Limited Contour	386473	29245.0
not affected by terrain losses	384301	28806.0
lost to NTSC IX	42538	3620.4
lost to additional IX by ATV	36452	926.2
lost to all IX	78990	4546.6

Potential Interferring Stations Included in above Scenario 1

7N FL JACKSONVILLE	BLET	19851004KG	LIC
8N FL TAMPA	BLCT	19871223KF	LIC
8N GA ATHENS	BMLET	19890727KG	LIC
9N GA SAVANNAH	BLET	85	LIC
7A GA COCHRAN	BPEDT	20000425AAQ	CP
8A GA Dawson	CUR	PROPOSED	APR

The following station failed the de minimis interference criteria.

8D GA Dawson CUR PROPOSED  
 ERP 6.00 kW HAAT 312.0 m RCAMSL 444.0 m  
 Antenna CDB 00000000000001

Due to interference to the following station and scenario: 1

8N GA WAYCROSS BLCT 1161  
 ERP 316.00 kW HAAT 314.0 m RCAMSL 364.0 m  
 Antenna none

Percent new DTV interference without proposal:	0.0	BLCT	1161
Percent new DTV interference with proposal:	9.4	BLCT	1161

Result key: 13  
 Scenario 2 Affected station 9  
 Before Analysis

Results for: 8N GA WAYCROSS BLCT 1161 LIC

	POPULATION	AREA (sq km)
within Noise Limited Contour	386473	29245.0
not affected by terrain losses	384301	28806.0
lost to NTSC IX	42538	3620.4

lost to additional IX by ATV	3603	310.1
lost to all IX	46141	3930.5

Potential Interferring Stations Included in above Scenario 2

7N FL JACKSONVILLE	BLET	19851004KG	LIC
8N FL TAMPA	BLCT	19871223KF	LIC
8N GA ATHENS	BMLET	19890727KG	LIC
9N GA SAVANNAH	BLET	85	LIC
7A GA COCHRAN	BPEDT	20000425AAQ	CP
8A FL PANAMA CITY	BMPCDT	20010906ABJ	APP

After Analysis

Results for: 8N GA WAYCROSS	BLCT	1161	LIC
	POPULATION	AREA (sq km)	
within Noise Limited Contour	386473	29245.0	
not affected by terrain losses	384301	28806.0	
lost to NTSC IX	42538	3620.4	
lost to additional IX by ATV	37943	1079.3	
lost to all IX	80481	4699.7	

Potential Interferring Stations Included in above Scenario 2

7N FL JACKSONVILLE	BLET	19851004KG	LIC
8N FL TAMPA	BLCT	19871223KF	LIC
8N GA ATHENS	BMLET	19890727KG	LIC
9N GA SAVANNAH	BLET	85	LIC
7A GA COCHRAN	BPEDT	20000425AAQ	CP
8A FL PANAMA CITY	BMPCDT	20010906ABJ	APP
8A GA Dawson	CUR	PROPOSED	APR

The following station failed the de minimis interference criteria.

8D GA Dawson	CUR	PROPOSED
ERP 6.00 kW HAAT 312.0 m	RCAMSL	444.0 m
Antenna CDB 00000000000001		

Due to interference to the following station and scenario: 2

8N GA WAYCROSS	BLCT	1161
ERP 316.00 kW HAAT 314.0 m	RCAMSL	364.0 m
Antenna none		

Percent new DTV interference without proposal:	0.9	BLCT	1161
Percent new DTV interference with proposal:	9.8	BLCT	1161

Result key: 14  
Scenario 3 Affected station 9  
Before Analysis

Results for: 8N GA WAYCROSS	BLCT	1161	LIC
	POPULATION	AREA (sq km)	
within Noise Limited Contour	386473	29245.0	
not affected by terrain losses	384301	28806.0	
lost to NTSC IX	42538	3620.4	
lost to additional IX by ATV	368	32.2	
lost to all IX	42906	3652.6	

Potential Interfering Stations Included in above Scenario 3

7N FL JACKSONVILLE	BLET	19851004KG	LIC
8N FL TAMPA	BLCT	19871223KF	LIC
8N GA ATHENS	BMLET	19890727KG	LIC
9N GA SAVANNAH	BLET	85	LIC
7A GA COCHRAN	BPEDT	20000425AAQ	CP
8A FL PANAMA CITY	BPRM	20000328AAF	APP

After Analysis

Results for: 8N GA WAYCROSS	BLCT	1161	LIC
	POPULATION	AREA (sq km)	
within Noise Limited Contour	386473	29245.0	
not affected by terrain losses	384301	28806.0	
lost to NTSC IX	42538	3620.4	
lost to additional IX by ATV	36654	946.4	
lost to all IX	79192	4566.8	

Potential Interfering Stations Included in above Scenario 3

7N FL JACKSONVILLE	BLET	19851004KG	LIC
8N FL TAMPA	BLCT	19871223KF	LIC
8N GA ATHENS	BMLET	19890727KG	LIC
9N GA SAVANNAH	BLET	85	LIC
7A GA COCHRAN	BPEDT	20000425AAQ	CP
8A FL PANAMA CITY	BPRM	20000328AAF	APP
8A GA Dawson	CUR	PROPOSED	APR

The following station failed the de minimis interference criteria.

8D GA Dawson	CUR	PROPOSED
ERP 6.00 kW HAAT 312.0 m	RCAMSL	444.0 m
Antenna CDB 00000000000001		

Due to interference to the following station and scenario: 3

8N GA WAYCROSS	BLCT	1161
ERP 316.00 kW HAAT 314.0 m	RCAMSL	364.0 m
Antenna none		

Percent new DTV interference without proposal:	0.1	BLCT	1161
Percent new DTV interference with proposal:	9.5	BLCT	1161

#####

Analysis of Interference to Affected Station 10

DTV Baseline Analysis

Channel	Call	City/State	Application Ref. No.
08	WOLO-DT	COLUMBIA SC	DTVPLN -DTVP0049

Stations Potentially Affecting This Station

Chan	Call	City/State	Dist(km)	Status	Application Ref. No.
------	------	------------	----------	--------	----------------------

07	WITV	CHARLESTON SC	173.0	PLN	DTVPLN	-NPLN0499
07	WSPATV	SPARTANBURG SC	172.3	PLN	DTVPLN	-NPLN0500
08	WGTV	ATHENS GA	293.1	PLN	DTVPLN	-NPLN0528
08	WXGATV	WAYCROSS GA	348.6	PLN	DTVPLN	-NPLN0529
08	WGHPTV	HIGH POINT NC	221.0	PLN	DTVPLN	-NPLN0547
08	WFXI	MOREHEAD CITY NC	420.2	PLN	DTVPLN	-NPLN0548
08	WVLTTV	KNOXVILLE TN	345.4	PLN	DTVPLN	-NPLN0565
09	WVANTV	SAVANNAH GA	220.4	PLN	DTVPLN	-NPLN0589
09	WSOCTV	CHARLOTTE NC	135.9	PLN	DTVPLN	-NPLN0608
09	WNTV-DT	GREENVILLE SC	163.8	PLN	DTVPLN	-DTVP0059

Results for: 8A SC COLUMBIA DTVPLN DTVP0049 PLN  
 HAAT 253.0 m, ATV ERP 3.2 kW

	POPULATION	AREA (sq km)
within Noise Limited Contour	790540	17867.3
not affected by terrain losses	789394	17590.8
lost to NTSC IX	10676	841.5
lost to additional IX by ATV	0	0.0
lost to ATV IX only	0	0.0
lost to all IX	10676	841.5

#### NTSC Baseline Analysis

Channel	Call	City/State	Application	Ref. No.
25	WOLOTV	COLUMBIA SC	DTVPLN	-NPLN1257

#### Stations Potentially Affecting This Station

Chan	Call	City/State	Dist(km)	Status	Application	Ref. No.
17	WLTX-DT	COLUMBIA SC	20.4	PLN	DTVPLN	-DTVP0280
18	WCCB	CHARLOTTE NC	136.3	PLN	DTVPLN	-NPLN1024
18	WNEH-DT	GREENWOOD SC	114.6	PLN	DTVPLN	-DTVP0322
24	WTVI-DT	CHARLOTTE NC	139.3	PLN	DTVPLN	-DTVP0574
24	WTATTV	CHARLESTON SC	172.0	PLN	DTVPLN	-NPLN1224
25	WATL-DT	ATLANTA GA	311.1	PLN	DTVPLN	-DTVP0598
25	WUNF-DT	ASHEVILLE NC	222.5	PLN	DTVPLN	-DTVP0608
25	WUNKTV	GREENVILLE NC	350.3	PLN	DTVPLN	-NPLN1252
25	WUNU-DT	LUMBERTON NC	195.6	PLN	DTVPLN	-DTVP0609
26	WAGT	AUGUSTA GA	106.2	PLN	DTVPLN	-NPLN1272
27	WCCB-DT	CHARLOTTE NC	136.3	PLN	DTVPLN	-DTVP0676
27	WRJATV	SUMTER SC	68.3	PLN	DTVPLN	-NPLN1316
28	WRJA-DT	SUMTER SC	68.3	PLN	DTVPLN	-DTVP0725
32	WRLK-DT	COLUMBIA SC	8.0	PLN	DTVPLN	-DTVP0880
33	WEBA-DT	ALLENDALE SC	104.1	PLN	DTVPLN	-DTVP0917
33	WJPMTV	FLORENCE SC	116.4	PLN	DTVPLN	-NPLN1458
40	WFBCTV	ANDERSON SC	135.4	PLN	DTVPLN	-NPLN1595

Results for: 25N SC COLUMBIA DTVPLN NPLN1257 PLN

	POPULATION	AREA (sq km)
within Noise Limited Contour	777605	17158.1
not affected by terrain losses	777499	17098.0
lost to NTSC IX	20262	1478.6
lost to additional IX by ATV	39882	2404.2
lost to all IX	60144	3882.8

#### Analysis of current record

Channel	Call	City/State	Application	Ref. No.
08	WOLO-DT	COLUMBIA SC	DTVPLN	-DTVP0049

# Stations Potentially Affecting This Station

Chan	Call	City/State	Dist(km)	Status	Application	Ref. No.
07	WITV	CHARLESTON SC	173.0	LIC	BLET	-19900809KE
07	WSPA-TV	SPARTANBURG SC	172.3	CP	BPCT	-20000428ABA
08	WGTV	ATHENS GA	293.1	LIC	BMLET	-19890727KG
08	WXGA-TV	WAYCROSS GA	348.6	LIC	BLCT	-1161
08	WGHP	HIGH POINT NC	221.0	LIC	BLCT	-1313
08	WFXI	MOREHEAD CITY NC	420.2	LIC	BLCT	-19891117KI
08	WVLT-TV	KNOXVILLE TN	345.4	LIC	BLCT	-19881223KE
08	WVSX	LEWISBURG WV	413.8	APP	BPRM	-20020309AAA
09	WVAN-TV	SAVANNAH GA	220.4	LIC	BLET	-85
09	WSOC-TV	CHARLOTTE NC	135.9	LIC	BLCT	-20000726AAR
09	WNTV-DT	GREENVILLE SC	163.8	CP	BPEDT	-20000428ACZ
09	WNTV-DT	GREENVILLE SC	163.8	PLN	DTVPLN	-DTVP0059
08	WACS-D.P	Dawson GA	408.0	APR	CUR	-PROPOSED

Proposal causes no interference

#####

## Analysis of Interference to Affected Station 11

### Analysis of current record

Channel	Call	City/State	Application	Ref. No.
09	WPGX	PANAMA CITY FL	BPRM	-20000411AAB

# Stations Potentially Affecting This Station

Chan	Call	City/State	Dist(km)	Status	Application	Ref. No.
08	WJHG-DT	PANAMA CITY FL	22.8	APP	BMPCDT	-20010906ABJ
08	WJHG-TV	PANAMA CITY FL	22.8	APP	BPRM	-20000328AAF
09	WJSU-TV	ANNISTON AL	387.7	APP	BPRM	-20010418ABL
09	WALA-DT	MOBILE AL	236.4	CP	BPCDT	-19991028AEO
09	WALA-DT	MOBILE AL	236.4	PLN	DTVPLN	-DTVP0052
09	WTVM	COLUMBUS GA	239.9	LIC	BLCT	-1079
09	WVAN-TV	SAVANNAH GA	417.1	LIC	BLET	-85
09	WXGA-TV	WAYCROSS GA	290.7	APP	BPRM	-20010327AJD
10	WALB-TV	ALBANY GA	190.4	LIC	BLCT	-2413
08	WACS-D.P	Dawson GA	205.8	APR	CUR	-PROPOSED

Proposal causes no interference

#####

## Analysis of Interference to Affected Station 12

### Analysis of current record

Channel	Call	City/State	Application	Ref. No.
09	WPGX	PANAMA CITY FL	BMPCDT	-20011003AAK

# Stations Potentially Affecting This Station

Chan	Call	City/State	Dist(km)	Status	Application	Ref. No.
------	------	------------	----------	--------	-------------	----------

08	WJHG-DT	PANAMA CITY FL	22.8	APP	BMPCDT	-20010906ABJ
08	WJHG-TV	PANAMA CITY FL	22.8	APP	BPRM	-20000328AAF
09	WJSU-TV	ANNISTON AL	387.7	APP	BPRM	-20010418ABL
09	WALA-DT	MOBILE AL	236.4	CP	BPCDT	-19991028AEO
09	WALA-DT	MOBILE AL	236.4	PLN	DTVPLN	-DTVP0052
09	WTVM	COLUMBUS GA	239.9	LIC	BLCT	-1079
09	WVAN-TV	SAVANNAH GA	417.1	LIC	BLET	-85
09	WXGA-TV	WAYCROSS GA	290.7	APP	BPRM	-20010327AJD
10	WALB-TV	ALBANY GA	190.4	LIC	BLCT	-2413
08	WACS-D.P	Dawson GA	205.8	APR	CUR	-PROPOSED

Proposal causes no interference

#####

### Analysis of Interference to Affected Station 13

#### NTSC Baseline Analysis

Channel	Call	City/State	Application	Ref. No.
09	WTVM	COLUMBUS GA	DTVPLN	-NPLN0588

#### Stations Potentially Affecting This Station

Chan	Call	City/State	Dist(km)	Status	Application	Ref. No.
08	WAKA	SELMA AL	189.1	PLN	DTVPLN	-NPLN0517
08	WGTV	ATHENS GA	175.0	PLN	DTVPLN	-NPLN0528
09	WALA-DT	MOBILE AL	338.9	PLN	DTVPLN	-DTVP0052
09	WVANTV	SAVANNAH GA	297.9	PLN	DTVPLN	-NPLN0589
09	WNTV-DT	GREENVILLE SC	364.2	PLN	DTVPLN	-DTVP0059
09	WTVG	CHATTANOOGA TN	319.3	PLN	DTVPLN	-NPLN0624
10	WALBTB	ALBANY GA	140.3	PLN	DTVPLN	-NPLN0645
10	WXIA-DT	ATLANTA GA	164.7	PLN	DTVPLN	-DTVP0070

Results for:	9N GA COLUMBUS	DTVPLN	NPLN0588	PLN
		POPULATION	AREA (sq km)	
within Noise Limited Contour	1000871	40146.4		
not affected by terrain losses	945064	37433.2		
lost to NTSC IX	221563	6297.3		
lost to additional IX by ATV	1107	201.6		
lost to all IX	222670	6498.9		

#### Analysis of current record

Channel	Call	City/State	Application	Ref. No.
09	WTVM	COLUMBUS GA	BLCT	-1079

#### Stations Potentially Affecting This Station

Chan	Call	City/State	Dist(km)	Status	Application	Ref. No.
08	WAKA	SELMA AL	189.2	LIC	BMLCT	-20020312AAC
08	WJHG-DT	PANAMA CITY FL	218.6	APP	BMPCDT	-20010906ABJ
08	WJHG-TV	PANAMA CITY FL	218.6	APP	BPRM	-20000328AAF
08	WGTV	ATHENS GA	175.0	LIC	BMLET	-19890727KG
09	WJSU-TV	ANNISTON AL	209.0	APP	BPRM	-20010418ABL
09	WALA-DT	MOBILE AL	338.9	CP	BPCDT	-19991028AEO
09	WALA-DT	MOBILE AL	338.9	PLN	DTVPLN	-DTVP0052
09	WPGX	PANAMA CITY FL	239.9	APP	BPRM	-20000411AAB

09	WPGX	PANAMA CITY FL	239.9	CP MOD	BMPCDT	-20011003AAK
09	WVAN-TV	SAVANNAH GA	297.9	LIC	BLET	-85
09	WXGA-TV	WAYCROSS GA	241.8	APP	BPRM	-20010327AJD
09	WNTV-DT	GREENVILLE SC	364.3	CP	BPEDT	-20000428ACZ
09	WNTV-DT	GREENVILLE SC	364.2	PLN	DTVPLN	-DTVP0059
09	WTVG	CHATTANOOGA TN	319.2	CP	BPCT	-20000418AAS
10	WXIA-DT	ALANTA GA	164.7	CP	BPCDT	-20000501AFP
10	WALB-TV	ALBANY GA	140.3	LIC	BLCT	-2413
10	WXIA-DT	ATLANTA GA	164.7	PLN	DTVPLN	-DTVP0070
08	WACS-D.P	Dawson GA	47.9	APR	CUR	-PROPOSED

Proposal causes no interference

#####

#### Analysis of Interference to Affected Station 14

##### Analysis of current record

Channel	Call	City/State	Application	Ref. No.
09	WXGA-TV	WAYCROSS GA	BPRM	-20010327AJD

##### Stations Potentially Affecting This Station

Chan	Call	City/State	Dist(km)	Status	Application	Ref. No.
08	WXGA-TV	WAYCROSS GA	0.0	LIC	BLCT	-1161
09	WFTV	ORLANDO FL	324.2	LIC	BLCT	-19991028AAY
09	WPGX	PANAMA CITY FL	290.7	APP	BPRM	-20000411AAB
09	WPGX	PANAMA CITY FL	290.7	CP MOD	BMPCDT	-20011003AAK
09	WTVM	COLUMBUS GA	241.8	LIC	BLCT	-1079
09	WVAN-TV	SAVANNAH GA	136.9	LIC	BLET	-85
09	WNTV-DT	GREENVILLE SC	413.8	CP	BPEDT	-20000428ACZ
09	WNTV-DT	GREENVILLE SC	413.7	PLN	DTVPLN	-DTVP0059
10	WJXX-DT	ORANGE PARK FL	143.5	CP	BPCDT	-19991019ABU
10	WJXX-DT	ORANGE PARK FL	147.1	PLN	DTVPLN	-DTVP0069
10	WALB-TV	ALBANY GA	123.0	LIC	BLCT	-2413
08	WACS-D.P	Dawson GA	203.8	APR	CUR	-PROPOSED

Proposed station is beyond the site to  
nearest cell evaluation distance

#####

#### Analysis of Interference to Affected Station 15

##### Analysis of current record

Channel	Call	City/State	Application	Ref. No.
08	WACS-D.P	Dawson GA	CUR	-PROPOSED

##### Stations Potentially Affecting This Station

Chan	Call	City/State	Dist(km)	Status	Application	Ref. No.
07	WCIQ	MOUNT CHEAHA AL	208.3	LIC	BLET	-405
07	WJHG-TV	PANAMA CITY FL	186.1	LIC	BLCT	-1360
07	WDCO-DT	COCHRAN GA	135.8	CP	BPEDT	-20000425AAQ

07	WDCO-DT	COCHRAN GA	135.8	PLN	DTVPLN	-DTVP0031
08	WAKA	SELMA AL	211.1	LIC	BMLCT	-20020312AAC
08	WJHG-DT	PANAMA CITY FL	186.1	APP	BMPCDT	-20010906ABJ
08	WJHG-TV	PANAMA CITY FL	186.1	APP	BPRM	-20000328AAF
08	WGTV	ATHENS GA	211.1	LIC	BMLET	-19890727KG
08	WXGA-TV	WAYCROSS GA	203.8	LIC	BLCT	-1161
08	WOLO-DT	COLUMBIA SC	408.0	PLN	DTVPLN	-DTVP0049
09	WPGX	PANAMA CITY FL	205.8	APP	BPRM	-20000411AAB
09	WPGX	PANAMA CITY FL	205.8	CP MOD	BMPCDT	-20011003AAK
09	WTVM	COLUMBUS GA	47.9	LIC	BLCT	-1079
09	WXGA-TV	WAYCROSS GA	203.8	APP	BPRM	-20010327AJD

Total scenarios = 3

Result key: 15  
 Scenario 1 Affected station 15  
 Before Analysis

Results for:	8A GA Dawson	CUR	PROPOSED	APR
HAAT	312.0 m, ATV ERP	6.0 kW		
	POPULATION	AREA (sq km)		
within Noise Limited Contour	550698	21251.8		
not affected by terrain losses	547923	20968.3		
lost to NTSC IX	137509	1840.9		
lost to additional IX by ATV	82	12.0		
lost to ATV IX only	255	55.9		
lost to all IX	137591	1852.8		

Potential Interferring Stations Included in above Scenario 1

8N AL SELMA	BMLCT	20020312AAC	LIC	
8N GA ATHENS	BMLET	19890727KG	LIC	
8N GA WAYCROSS	BLCT	1161	LIC	
9N GA COLUMBUS	BLCT	1079	LIC	
7A GA COCHRAN	BPEDT	20000425AAQ	CP	
*Percent Service lost without proposal:	0.0	to CUR	PROPOSED	
*Percent Service lost with proposal:	0.0	to CUR	PROPOSED	

Result key: 16  
 Scenario 2 Affected station 15  
 Before Analysis

Results for:	8A GA Dawson	CUR	PROPOSED	APR
HAAT	312.0 m, ATV ERP	6.0 kW		
	POPULATION	AREA (sq km)		
within Noise Limited Contour	550698	21251.8		
not affected by terrain losses	547923	20968.3		
lost to NTSC IX	137509	1840.9		
lost to additional IX by ATV	116	63.9		
lost to ATV IX only	3536	227.6		
lost to all IX	137625	1904.8		

Potential Interferring Stations Included in above Scenario 2

8N AL SELMA	BMLCT	20020312AAC	LIC
-------------	-------	-------------	-----



8N GA ATHENS	BMLET	19890727KG	LIC	
8N GA WAYCROSS	BLCT	1161	LIC	
9N GA COLUMBUS	BLCT	1079	LIC	
7A GA COCHRAN	BPEDT	20000425AAQ	CP	
8A FL PANAMA CITY	BMPCDT	20010906ABJ	APP	
*Percent Service lost without proposal:			0.0	to CUR PROPOSED
*Percent Service lost with proposal:			0.0	to CUR PROPOSED

Result key: 17  
Scenario 3 Affected station 15  
Before Analysis

Results for: 8A GA Dawson	CUR	PROPOSED	APR
HAAT 312.0 m, ATV ERP 6.0 kW			
	POPULATION	AREA (sq km)	
within Noise Limited Contour	550698	21251.8	
not affected by terrain losses	547923	20968.3	
lost to NTSC IX	137509	1840.9	
lost to additional IX by ATV	154	71.9	
lost to ATV IX only	1915	247.6	
lost to all IX	137663	1912.7	

Potential Interferring Stations Included in above Scenario 3

8N AL SELMA	BMLCT	20020312AAC	LIC	
8N GA ATHENS	BMLET	19890727KG	LIC	
8N GA WAYCROSS	BLCT	1161	LIC	
9N GA COLUMBUS	BLCT	1079	LIC	
7A GA COCHRAN	BPEDT	20000425AAQ	CP	
8A FL PANAMA CITY	BPRM	20000328AAF	APP	
*Percent Service lost without proposal:			0.0	to CUR PROPOSED
*Percent Service lost with proposal:			0.0	to CUR PROPOSED

#####  
FINISHED FINISHED FINISHED FINISHED FINISHED FINISHED

TV INTERFERENCE and SPACING ANALYSIS PROGRAM

Date: 08-21-2002 Time: 13:47:07

Record Selected for Analysis

WACS-D.P CUR -PROPOSED Dawson GA US  
Channel 08 ERP 5.0 kW HAAT 00331 m RCAMSL 00463 m  
Latitude 031-56-15 Longitude 0084-33-15  
Status APR Zone Border  
Dir Antenna Make CDB Model 000000000000001 Beam tilt N Ref Azimuth 0.0  
Last update 00000000 Cutoff date 00000000 Docket  
Comments  
Applicant

Cell Size for Service Analysis 2.0 km/side

Distance Increments for Longley-Rice Analysis 1.00 km

Facility meets maximum height/power limits

Azimuth (Deg)	ERP (kW)	HAAT (m)	36.0 dBu F(50,90) (km)
0.0	4.475	334.0	88.7
45.0	4.255	332.0	88.1
90.0	5.000	348.9	90.6
135.0	2.980	336.8	85.7
180.0	0.255	337.6	66.8
225.0	0.196	326.7	64.0
270.0	1.746	323.6	80.7
315.0	4.836	307.1	87.4

Evaluation toward Class A Stations

No Spacing violations or contour overlap to Class A stations

Class A Evaluation Complete

SPACING VIOLATION FOUND BETWEEN STATION

WACS-D.P 08 Dawson GA CUR PROPOSED

and station

SHORT TO: WAKA 08 SELMA AL BMLCT 20020312AAC  
 032-08-58 0086-46-51  
 Req. separation 273.6 Actual separation 211.6 Short 62.0 km

SHORT TO: WJHG-DT 08 PANAMA CITY FL BMPCDT 20010906ABJ  
 030-26- 0 0085-24-51  
 Req. separation 273.6 Actual separation 185.8 Short 87.8 km

SHORT TO: WJHG-TV 08 PANAMA CITY FL BPRM 20000328AAF  
 030-26- 0 0085-24-51  
 Req. separation 273.6 Actual separation 185.8 Short 87.8 km

SHORT TO: WGTW 08 ATHENS GA BMLET 19890727KG  
 033-48-18 0084-08-40  
 Req. separation 273.6 Actual separation 210.6 Short 63.0 km

SHORT TO: WXGA-TV 08 WAYCROSS GA BLCT 1161  
 031-13-17 0082-34-24  
 Req. separation 273.6 Actual separation 204.1 Short 69.5 km

SHORT TO: WTVM 09 COLUMBUS GA BLCT 1079  
 032-19-25 0084-46-46  
 Req. separation => 11.0 <= 125.0 Actual separation 47.8 Short 77.2 ( 36.8) km

Proposed facility OK to FCC Monitoring Stations

Proposed facility OK toward West Virginia quite zone

Proposed facility OK toward Table Mountain

Proposed facility is beyond the Canadian coordination distance

Proposed facility is beyond the Mexican coordination distance

Proposed station is OK toward AM broadcast stations

\*\*\*\*\*  
 Start of Interference Analysis

Channel	Proposed Station Call	City/State	ARN	
08	WACS-D.P	Dawson GA	CUR	PROPOSED

Stations Potentially Affected by Proposed Station

Chan	Call	City/State	Dist(km)	Status	Application	Ref. No.
07	WCIQ	MOUNT CHEAHA AL	208.3	LIC	BLET	-405
07	WJHG-TV	PANAMA CITY FL	186.1	LIC	BLCT	-1360
07	WDCO-DT	COCHRAN GA	135.8	CP	BPEDT	-20000425AAQ



08 WACS-D.P Dawson GA 208.3 APR CUR -PROPOSED  
Proposal causes no interference

#####

## Analysis of Interference to Affected Station 2

### NTSC Baseline Analysis

Channel	Call	City/State	Application	Ref. No.
07	WJHGT	PANAMA CITY FL	DTVPLN	-NPLN0467

### Stations Potentially Affecting This Station

Chan	Call	City/State	Dist(km)	Status	Application	Ref. No.
07	WCIQ	MOUNT CHEAHA AL	341.3	PLN	DTVPLN	-NPLN0456
07	WJCT	JACKSONVILLE FL	369.0	PLN	DTVPLN	-NPLN0465
07	WDCO-DT	COCHRAN GA	305.2	PLN	DTVPLN	-DTVP0031
07	WDAMTV	LAUREL MS	386.0	PLN	DTVPLN	-NPLN0482

Results for:	7N FL PANAMA CITY	DTVPLN	NPLN0467	PLN
	POPULATION	AREA (sq km)		
within Noise Limited Contour	394083	27085.1		
not affected by terrain losses	392671	26880.7		
lost to NTSC IX	21737	629.1		
lost to additional IX by ATV	0	0.0		
lost to all IX	21737	629.1		

### Analysis of current record

Channel	Call	City/State	Application	Ref. No.
07	WJHG-TV	PANAMA CITY FL	BLCT	-1360

### Stations Potentially Affecting This Station

Chan	Call	City/State	Dist(km)	Status	Application	Ref. No.
07	WCIQ	MOUNT CHEAHA AL	341.3	LIC	BLET	-405
07	WJCT	JACKSONVILLE FL	369.0	LIC	BLET	-19851004KG
07	WDCO-DT	COCHRAN GA	305.2	CP	BPEDT	-20000425AAQ
07	WDCO-DT	COCHRAN GA	305.2	PLN	DTVPLN	-DTVP0031
07	WDAM-TV	LAUREL MS	386.0	LIC	BLCT	-2375
08	WJHG-DT	PANAMA CITY FL	0.0	APP	BMPCDT	-20010906ABJ
08	WJHG-TV	PANAMA CITY FL	0.0	APP	BPRM	-20000328AAF
08	WACS-D.P Dawson GA		186.1	APR	CUR	-PROPOSED

Proposal causes no interference

#####

## Analysis of Interference to Affected Station 3

### DTV Baseline Analysis

Channel	Call	City/State	Application	Ref. No.
07	WDCO-DT	COCHRAN GA	DTVPLN	-DTVP0031

### Stations Potentially Affecting This Station

Chan	Call	City/State	Dist(km)	Status	Application	Ref. No.
07	WCIQ	MOUNT CHEAHA AL	263.6	PLN	DTVPLN	-NPLN0456
07	WJCT	JACKSONVILLE FL	291.0	PLN	DTVPLN	-NPLN0465
07	WJHGTV	PANAMA CITY FL	305.2	PLN	DTVPLN	-NPLN0467
07	WITV	CHARLESTON SC	336.4	PLN	DTVPLN	-NPLN0499
07	WSPATV	SPARTANBURG SC	313.1	PLN	DTVPLN	-NPLN0500
08	WGTV	ATHENS GA	170.0	PLN	DTVPLN	-NPLN0528
08	WXGATV	WAYCROSS GA	152.9	PLN	DTVPLN	-NPLN0529

Results for: 7A GA COCHRAN DTVPLN DTVP0031 PLN  
 HAAT 350.0 m, ATV ERP 4.8 kW

	POPULATION	AREA (sq km)
within Noise Limited Contour	553110	21511.0
not affected by terrain losses	552191	21317.6
lost to NTSC IX	15529	713.1
lost to additional IX by ATV	0	0.0
lost to ATV IX only	0	0.0
lost to all IX	15529	713.1

#### NTSC Baseline Analysis

Channel	Call	City/State	Application	Ref. No.
29	WDCOTV	COCHRAN GA	DTVPLN	-NPLN1354

#### Stations Potentially Affecting This Station

Chan	Call	City/State	Dist(km)	Status	Application	Ref. No.
22	WJCL	SAVANNAH GA	185.8	PLN	DTVPLN	-NPLN1138
28	WJSPTV	COLUMBUS GA	141.9	PLN	DTVPLN	-NPLN1329
28	WTGS	HARDEEVILLE SC	185.9	PLN	DTVPLN	-NPLN1339
29	NEW	SELMA AL	352.3	PLN	DTVPLN	-NPLN1348
29	WPGX-DT	PANAMA CITY FL	316.1	PLN	DTVPLN	-DTV0739
29	WNTV	GREENVILLE SC	285.5	PLN	DTVPLN	-NPLN1366
29	WTCI-DT	CHATTANOOGA TN	357.2	PLN	DTVPLN	-DTV0766
30	WFXL-DT	ALBANY GA	138.9	PLN	DTVPLN	-DTV0781
30	WPBA	ATLANTA GA	175.1	PLN	DTVPLN	-NPLN1380
30	WAGT-DT	AUGUSTA GA	169.2	PLN	DTVPLN	-DTV0782
31	WFXL	ALBANY GA	138.9	PLN	DTVPLN	-NPLN1403
32	WPGA-DT	PERRY GA	42.5	PLN	DTVPLN	-DTV0861
36	WATL	ATLANTA GA	179.8	PLN	DTVPLN	-NPLN1516
36	WCES-DT	WRENS GA	126.0	PLN	DTVPLN	-DTV1009
44	WGVP	VALDOSTA GA	144.7	PLN	DTVPLN	-NPLN1657

Results for: 29N GA COCHRAN DTVPLN NPLN1354 PLN

	POPULATION	AREA (sq km)
within Noise Limited Contour	553142	21527.2
not affected by terrain losses	552542	21422.4
lost to NTSC IX	32760	1571.3
lost to additional IX by ATV	0	0.0
lost to all IX	32760	1571.3

#### Analysis of current record

Channel	Call	City/State	Application	Ref. No.
07	WDCO-DT	COCHRAN GA	BPEDT	-20000425AAQ

#### Stations Potentially Affecting This Station

Chan	Call	City/State	Dist(km)	Status	Application	Ref. No.
07	WCIQ	MOUNT CHEAHA AL	263.6	LIC	BLET	-405
07	WJCT	JACKSONVILLE FL	291.0	LIC	BLET	-19851004KG
07	WJHG-TV	PANAMA CITY FL	305.2	LIC	BLCT	-1360
07	WITV	CHARLESTON SC	336.4	LIC	BLET	-19900809KE
07	WSPA-TV	SPARTANBURG SC	313.1	CP	BPCT	-20000428ABA
07	NEW	KNOXVILLE TN	398.4	ADD	BPRM	-20000717ADM
08	WGTV	ATHENS GA	170.0	LIC	BMLET	-19890727KG
08	WXGA-TV	WAYCROSS GA	152.9	LIC	BLCT	-1161
08	WACS-D.P	Dawson GA	135.8	APR	CUR	-PROPOSED

Total scenarios = 1

Result key: 1  
Scenario 1 Affected station 3  
Before Analysis

Results for: 7A GA COCHRAN BPEDT 20000425AAQ CP  
HAAT 369.0 m, ATV ERP 22.0 kW

	POPULATION	AREA (sq km)
within Noise Limited Contour	719795	33940.1
not affected by terrain losses	717839	33509.4
lost to NTSC IX	16051	966.2
lost to additional IX by ATV	0	0.0
lost to ATV IX only	0	0.0
lost to all IX	16051	966.2

Potential Interferring Stations Included in above Scenario 1

7N AL MOUNT CHEAHA	BLET	405	LIC
7N FL JACKSONVILLE	BLET	19851004KG	LIC
7N FL PANAMA CITY	BLCT	1360	LIC
7N SC CHARLESTON	BLET	19900809KE	LIC
7N SC SPARTANBURG	BPCT	20000428ABA	CP

After Analysis

Results for: 7A GA COCHRAN BPEDT 20000425AAQ CP  
HAAT 369.0 m, ATV ERP 22.0 kW

	POPULATION	AREA (sq km)
within Noise Limited Contour	719795	33940.1
not affected by terrain losses	717839	33509.4
lost to NTSC IX	16051	966.2
lost to additional IX by ATV	0	0.0
lost to ATV IX only	8710	32.2
lost to all IX	16051	966.2

Potential Interferring Stations Included in above Scenario 1

7N AL MOUNT CHEAHA	BLET	405	LIC
7N FL JACKSONVILLE	BLET	19851004KG	LIC
7N FL PANAMA CITY	BLCT	1360	LIC
7N SC CHARLESTON	BLET	19900809KE	LIC
7N SC SPARTANBURG	BPCT	20000428ABA	CP
8A GA Dawson	CUR	PROPOSED	APR

\*Percent Service lost without proposal: -30.8 to BPEDT 20000425AAQ

\*Percent Service lost with proposal: -30.8 to BPEDT 20000425AAQ

#####

Analysis of Interference to Affected Station 4

Analysis of current record

Channel	Call	City/State	Application	Ref. No.
07	WDCO-DT	COCHRAN GA	DTVPLN	-DTVP0031

Stations Potentially Affecting This Station

Chan	Call	City/State	Dist(km)	Status	Application	Ref. No.
07	WCIQ	MOUNT CHEAHA AL	263.6	LIC	BLET	-405
07	WJCT	JACKSONVILLE FL	291.0	LIC	BLET	-19851004KG
07	WJHG-TV	PANAMA CITY FL	305.2	LIC	BLCT	-1360
07	WITV	CHARLESTON SC	336.4	LIC	BLET	-19900809KE
07	WSPA-TV	SPARTANBURG SC	313.1	CP	BPCT	-20000428ABA
07	NEW	KNOXVILLE TN	398.4	ADD	BPRM	-20000717ADM
08	WGTV	ATHENS GA	170.0	LIC	BMLET	-19890727KG
08	WXGA-TV	WAYCROSS GA	152.9	LIC	BLCT	-1161
08	WACS-D.P	Dawson GA	135.8	APR	CUR	-PROPOSED

Proposal causes no interference

#####

Analysis of Interference to Affected Station 5

NTSC Baseline Analysis

Channel	Call	City/State	Application	Ref. No.
08	WAKA	SELMA AL	DTVPLN	-NPLN0517

Stations Potentially Affecting This Station

Chan	Call	City/State	Dist(km)	Status	Application	Ref. No.
07	WCIQ	MOUNT CHEAHA AL	174.0	PLN	DTVPLN	-NPLN0456
08	WGTV	ATHENS GA	307.0	PLN	DTVPLN	-NPLN0528
08	WXGATV	WAYCROSS GA	411.0	PLN	DTVPLN	-NPLN0529
08	WVUE	NEW ORLEANS LA	388.1	PLN	DTVPLN	-NPLN0537
09	WALA-DT	MOBILE AL	189.0	PLN	DTVPLN	-DTVP0052
09	WTVM	COLUMBUS GA	189.1	PLN	DTVPLN	-NPLN0588

Results for:	8N AL SELMA	DTVPLN	NPLN0517	PLN
		POPULATION	AREA (sq km)	
within Noise Limited Contour	679545	40209.0		
not affected by terrain losses	653950	37336.9		
lost to NTSC IX	22041	2359.1		
lost to additional IX by ATV	0	0.0		
lost to all IX	22041	2359.1		

Analysis of current record

Channel	Call	City/State	Application	Ref. No.
---------	------	------------	-------------	----------



08 WAKA SELMA AL BMLCT -20020312AAC

Stations Potentially Affecting This Station

Chan	Call	City/State	Dist(km)	Status	Application	Ref. No.
07	WCIQ	MOUNT CHEAHA AL	174.0	LIC	BLET	-405
08	WJHG-DT	PANAMA CITY FL	230.7	APP	BMPCDT	-20010906ABJ
08	WJHG-TV	PANAMA CITY FL	230.7	APP	BPRM	-20000328AAF
08	WGTV	ATHENS GA	307.0	LIC	BMLET	-19890727KG
08	WXGA-TV	WAYCROSS GA	411.1	LIC	BLCT	-1161
08	WVUE	NEW ORLEANS LA	388.0	LIC	BMLCT	-19890510KF
08	WMEA-TV	BOONEVILLE MS	334.2	APP	BPRM	-20000328AAC
08	WTVA-TV	TUPELO MS	282.3	APP	BPRM	-20000731AAC
08	WTVA	TUPELO MS	282.3	APP	BMPCDT	-20000502AAR
09	WJSU-TV	ANNISTON AL	165.5	APP	BPRM	-20010418ABL
09	WALA-DT	MOBILE AL	188.9	CP	BPCDT	-19991028AEO
09	WALA-DT	MOBILE AL	188.9	PLN	DTVPLN	-DTVP0052
09	WTVM	COLUMBUS GA	189.2	LIC	BLCT	-1079
08	WACS-D.P	Dawson GA	211.1	APR	CUR	-PROPOSED

Total scenarios = 5

Result key: 2  
 Scenario 1 Affected station 5  
 Before Analysis

Results for: 8N AL SELMA BMLCT 20020312AAC LIC

	POPULATION	AREA (sq km)
within Noise Limited Contour	679557	40205.3
not affected by terrain losses	656061	37397.8
lost to NTSC IX	24760	2342.9
lost to additional IX by ATV	0	0.0
lost to all IX	24760	2342.9

Potential Interfering Stations Included in above Scenario 1

7N AL MOUNT CHEAHA	BLET	405	LIC
8N GA ATHENS	BMLET	19890727KG	LIC
8N LA NEW ORLEANS	BMLCT	19890510KF	LIC
9N GA COLUMBUS	BLCT	1079	LIC

After Analysis

Results for: 8N AL SELMA BMLCT 20020312AAC LIC

	POPULATION	AREA (sq km)
within Noise Limited Contour	679557	40205.3
not affected by terrain losses	656061	37397.8
lost to NTSC IX	24760	2342.9
lost to additional IX by ATV	7031	444.3
lost to all IX	31791	2787.3

Potential Interfering Stations Included in above Scenario 1

7N AL MOUNT CHEAHA	BLET	405	LIC
8N GA ATHENS	BMLET	19890727KG	LIC
8N LA NEW ORLEANS	BMLCT	19890510KF	LIC

9N GA COLUMBUS	BLCT	1079	LIC	
8A GA Dawson	CUR	PROPOSED	APR	
*Percent new DTV interference without proposal:			0.0	BMLCT 20020312AAC
*Percent new DTV interference with proposal:			1.0	BMLCT 20020312AAC

Result key: 3  
Scenario 2 Affected station 5  
Before Analysis

Results for: 8N AL SELMA	BMLCT	20020312AAC	LIC
	POPULATION	AREA (sq km)	
within Noise Limited Contour	679557	40205.3	
not affected by terrain losses	656061	37397.8	
lost to NTSC IX	24760	2342.9	
lost to additional IX by ATV	20686	1296.7	
lost to all IX	45446	3639.6	

Potential Interfering Stations Included in above Scenario 2

7N AL MOUNT CHEAHA	BLET	405	LIC
8N GA ATHENS	BMLET	19890727KG	LIC
8N LA NEW ORLEANS	BMLCT	19890510KF	LIC
9N GA COLUMBUS	BLCT	1079	LIC
8A FL PANAMA CITY	BMPCDT	20010906ABJ	APP
8A MS TUPELO	BPRM	20000731AAC	APP
9A AL ANNISTON	BPRM	20010418ABL	APP

After Analysis

Results for: 8N AL SELMA	BMLCT	20020312AAC	LIC
	POPULATION	AREA (sq km)	
within Noise Limited Contour	679557	40205.3	
not affected by terrain losses	656061	37397.8	
lost to NTSC IX	24760	2342.9	
lost to additional IX by ATV	27717	1741.0	
lost to all IX	52477	4084.0	

Potential Interfering Stations Included in above Scenario 2

7N AL MOUNT CHEAHA	BLET	405	LIC
8N GA ATHENS	BMLET	19890727KG	LIC
8N LA NEW ORLEANS	BMLCT	19890510KF	LIC
9N GA COLUMBUS	BLCT	1079	LIC
8A FL PANAMA CITY	BMPCDT	20010906ABJ	APP
8A MS TUPELO	BPRM	20000731AAC	APP
9A AL ANNISTON	BPRM	20010418ABL	APP
8A GA Dawson	CUR	PROPOSED	APR
*Percent new DTV interference without proposal:			3.0 BMLCT 20020312AAC
*Percent new DTV interference with proposal:			4.1 BMLCT 20020312AAC

Result key: 4  
Scenario 3 Affected station 5  
Before Analysis

Results for: 8N AL SELMA	BMLCT	20020312AAC	LIC
--------------------------	-------	-------------	-----

	POPULATION	AREA (sq km)
within Noise Limited Contour	679557	40205.3
not affected by terrain losses	656061	37397.8
lost to NTSC IX	24760	2342.9
lost to additional IX by ATV	21512	1316.9
lost to all IX	46272	3659.8

Potential Interferring Stations Included in above Scenario 3

7N AL MOUNT CHEAHA	BLET	405	LIC
8N GA ATHENS	BMLET	19890727KG	LIC
8N LA NEW ORLEANS	BMLCT	19890510KF	LIC
9N GA COLUMBUS	BLCT	1079	LIC
8A FL PANAMA CITY	BMPCDT	20010906ABJ	APP
8A MS TUPELO	BMPCDT	20000502AAR	APP
9A AL ANNISTON	BPRM	20010418ABL	APP

After Analysis

Results for: 8N AL SELMA	BMLCT	20020312AAC	LIC
	POPULATION	AREA (sq km)	
within Noise Limited Contour	679557	40205.3	
not affected by terrain losses	656061	37397.8	
lost to NTSC IX	24760	2342.9	
lost to additional IX by ATV	28543	1761.2	
lost to all IX	53303	4104.1	

Potential Interferring Stations Included in above Scenario 3

7N AL MOUNT CHEAHA	BLET	405	LIC
8N GA ATHENS	BMLET	19890727KG	LIC
8N LA NEW ORLEANS	BMLCT	19890510KF	LIC
9N GA COLUMBUS	BLCT	1079	LIC
8A FL PANAMA CITY	BMPCDT	20010906ABJ	APP
8A MS TUPELO	BMPCDT	20000502AAR	APP
9A AL ANNISTON	BPRM	20010418ABL	APP
8A GA Dawson	CUR	PROPOSED	APR
*Percent new DTV interference without proposal:		3.2	BMLCT 20020312AAC
*Percent new DTV interference with proposal:		4.2	BMLCT 20020312AAC

Result key: 5  
Scenario 4 Affected station 5  
Before Analysis

Results for: 8N AL SELMA	BMLCT	20020312AAC	LIC
	POPULATION	AREA (sq km)	
within Noise Limited Contour	679557	40205.3	
not affected by terrain losses	656061	37397.8	
lost to NTSC IX	24760	2342.9	
lost to additional IX by ATV	25254	1482.5	
lost to all IX	50014	3825.4	

Potential Interferring Stations Included in above Scenario 4

7N AL MOUNT CHEAHA	BLET	405	LIC
8N GA ATHENS	BMLET	19890727KG	LIC

8N LA NEW ORLEANS	BMLCT	19890510KF	LIC
9N GA COLUMBUS	BLCT	1079	LIC
8A FL PANAMA CITY	BPRM	20000328AAF	APP
8A MS TUPELO	BPRM	20000731AAC	APP
9A AL ANNISTON	BPRM	20010418ABL	APP

#### After Analysis

Results for: 8N AL SELMA	BMLCT	20020312AAC	LIC
	POPULATION	AREA (sq km)	
within Noise Limited Contour	679557	40205.3	
not affected by terrain losses	656061	37397.8	
lost to NTSC IX	24760	2342.9	
lost to additional IX by ATV	31803	1890.5	
lost to all IX	56563	4233.4	

Potential Interferring Stations Included in above Scenario 4

7N AL MOUNT CHEAHA	BLET	405	LIC
8N GA ATHENS	BMLET	19890727KG	LIC
8N LA NEW ORLEANS	BMLCT	19890510KF	LIC
9N GA COLUMBUS	BLCT	1079	LIC
8A FL PANAMA CITY	BPRM	20000328AAF	APP
8A MS TUPELO	BPRM	20000731AAC	APP
9A AL ANNISTON	BPRM	20010418ABL	APP
8A GA Dawson	CUR	PROPOSED	APR
*Percent new DTV interference without proposal:	3.7	BMLCT	20020312AAC
*Percent new DTV interference with proposal:	4.7	BMLCT	20020312AAC

Result key: 6  
 Scenario 5 Affected station 5  
 Before Analysis

Results for: 8N AL SELMA	BMLCT	20020312AAC	LIC
	POPULATION	AREA (sq km)	
within Noise Limited Contour	679557	40205.3	
not affected by terrain losses	656061	37397.8	
lost to NTSC IX	24760	2342.9	
lost to additional IX by ATV	26080	1502.7	
lost to all IX	50840	3845.6	

Potential Interferring Stations Included in above Scenario 5

7N AL MOUNT CHEAHA	BLET	405	LIC
8N GA ATHENS	BMLET	19890727KG	LIC
8N LA NEW ORLEANS	BMLCT	19890510KF	LIC
9N GA COLUMBUS	BLCT	1079	LIC
8A FL PANAMA CITY	BPRM	20000328AAF	APP
8A MS TUPELO	BMPCDT	20000502AAR	APP
9A AL ANNISTON	BPRM	20010418ABL	APP

#### After Analysis

Results for: 8N AL SELMA	BMLCT	20020312AAC	LIC
	POPULATION	AREA (sq km)	
within Noise Limited Contour	679557	40205.3	

not affected by terrain losses	656061	37397.8
lost to NTSC IX	24760	2342.9
lost to additional IX by ATV	32629	1910.7
lost to all IX	57389	4253.6

Potential Interferring Stations Included in above Scenario 5

7N AL MOUNT CHEAHA	BLET	405	LIC
8N GA ATHENS	BMLET	19890727KG	LIC
8N LA NEW ORLEANS	BMLCT	19890510KF	LIC
9N GA COLUMBUS	BLCT	1079	LIC
8A FL PANAMA CITY	BPRM	20000328AAF	APP
8A MS TUPELO	BMPCDT	20000502AAR	APP
9A AL ANNISTON	BPRM	20010418ABL	APP
8A GA Dawson	CUR	PROPOSED	APR
*Percent new DTV interference without proposal:			3.8 BMLCT 20020312AAC
*Percent new DTV interference with proposal:			4.8 BMLCT 20020312AAC

#####

Analysis of Interference to Affected Station 6

Analysis of current record

Channel	Call	City/State	Application	Ref. No.
08	WJHG-DT	PANAMA CITY FL	BMPCDT	-20010906ABJ

Stations Potentially Affecting This Station

Chan	Call	City/State	Dist(km)	Status	Application	Ref. No.
07	WJHG-TV	PANAMA CITY FL	0.0	LIC	BLCT	-1360
08	WAKA	SELMA AL	230.7	LIC	BMLCT	-20020312AAC
08	WFLA-TV	TAMPA FL	420.1	LIC	BLCT	-19871223KF
08	WGTW	ATHENS GA	393.3	LIC	BMLET	-19890727KG
08	WXGA-TV	WAYCROSS GA	284.9	LIC	BLCT	-1161
09	WPGX	PANAMA CITY FL	22.8	APP	BPRM	-20000411AAB
09	WPGX	PANAMA CITY FL	22.8	CP MOD	BMPCDT	-20011003AAK
09	WTVM	COLUMBUS GA	218.6	LIC	BLCT	-1079
08	WACS-D.P	Dawson GA	186.1	APR	CUR	-PROPOSED

Total scenarios = 2

Result key: 7  
Scenario 1 Affected station 6  
Before Analysis

Results for: 8A FL PANAMA CITY BMPCDT 20010906ABJ APP  
HAAT 253.0 m, ATV ERP 52.0 kW

	POPULATION	AREA (sq km)
within Noise Limited Contour	324644	27314.2
not affected by terrain losses	323565	27234.0
lost to NTSC IX	4693	441.2
lost to additional IX by ATV	2383	1195.2
lost to ATV IX only	2383	1199.3

lost to all IX 7076 1636.4

Potential Interferring Stations Included in above Scenario 1

8N AL SELMA	BMLCT	20020312AAC	LIC
8N GA WAYCROSS	BLCT	1161	LIC
9A FL PANAMA CITY	BMPCDT	20011003AAK	CP

After Analysis

Results for: 8A FL PANAMA CITY BMPCDT 20010906ABJ APP  
 HAAT 253.0 m, ATV ERP 52.0 kW

	POPULATION	AREA (sq km)
within Noise Limited Contour	324644	27314.2
not affected by terrain losses	323565	27234.0
lost to NTSC IX	4693	441.2
lost to additional IX by ATV	2449	1207.3
lost to ATV IX only	2790	1227.3
lost to all IX	7142	1648.5

Potential Interferring Stations Included in above Scenario 1

8N AL SELMA	BMLCT	20020312AAC	LIC
8N GA WAYCROSS	BLCT	1161	LIC
9A FL PANAMA CITY	BMPCDT	20011003AAK	CP
8A GA Dawson	CUR	PROPOSED	APR
*Percent Service lost without proposal:	0.0	to BMPCDT	20010906ABJ
*Percent Service lost with proposal:	0.0	to BMPCDT	20010906ABJ

Result key: 8  
 Scenario 2 Affected station 6  
 Before Analysis

Results for: 8A FL PANAMA CITY BMPCDT 20010906ABJ APP  
 HAAT 253.0 m, ATV ERP 52.0 kW

	POPULATION	AREA (sq km)
within Noise Limited Contour	324644	27314.2
not affected by terrain losses	323565	27234.0
lost to NTSC IX	4693	441.2
lost to additional IX by ATV	2383	1195.2
lost to ATV IX only	2383	1199.3
lost to all IX	7076	1636.4

Potential Interferring Stations Included in above Scenario 2

8N AL SELMA	BMLCT	20020312AAC	LIC
8N GA WAYCROSS	BLCT	1161	LIC
9A FL PANAMA CITY	BPRM	20000411AAB	APP

After Analysis

Results for: 8A FL PANAMA CITY BMPCDT 20010906ABJ APP  
 HAAT 253.0 m, ATV ERP 52.0 kW

	POPULATION	AREA (sq km)
within Noise Limited Contour	324644	27314.2
not affected by terrain losses	323565	27234.0

lost to NTSC IX	4693	441.2
lost to additional IX by ATV	2449	1207.3
lost to ATV IX only	2790	1227.3
lost to all IX	7142	1648.5

Potential Interfering Stations Included in above Scenario 2

8N AL SELMA	BMLCT	20020312AAC	LIC
8N GA WAYCROSS	BLCT	1161	LIC
9A FL PANAMA CITY	BPRM	20000411AAB	APP
8A GA Dawson	CUR	PROPOSED	APR
*Percent Service lost without proposal:		0.0	to BMPCDT 20010906ABJ
*Percent Service lost with proposal:		0.0	to BMPCDT 20010906ABJ

#####

Analysis of Interference to Affected Station 7

Analysis of current record

Channel	Call	City/State	Application	Ref. No.
08	WJHG-TV	PANAMA CITY FL	BPRM	-20000328AAF

Stations Potentially Affecting This Station

Chan	Call	City/State	Dist(km)	Status	Application	Ref. No.
07	WJHG-TV	PANAMA CITY FL	0.0	LIC	BLCT	-1360
08	WAKA	SELMA AL	230.7	LIC	BMLCT	-20020312AAC
08	WFLA-TV	TAMPA FL	420.1	LIC	BLCT	-19871223KF
08	WGTW	ATHENS GA	393.3	LIC	BMLET	-19890727KG
08	WXGA-TV	WAYCROSS GA	284.9	LIC	BLCT	-1161
09	WPGX	PANAMA CITY FL	22.8	APP	BPRM	-20000411AAB
09	WPGX	PANAMA CITY FL	22.8	CP MOD	BMPCDT	-20011003AAK
09	WTVM	COLUMBUS GA	218.6	LIC	BLCT	-1079
08	WACS-D.P	Dawson GA	186.1	APR	CUR	-PROPOSED

Total scenarios = 2

Result key: 9  
 Scenario 1 Affected station 7  
 Before Analysis

Results for: 8A FL PANAMA CITY BPRM 20000328AAF APP  
 HAAT 265.0 m, ATV ERP 27.0 kW

	POPULATION	AREA (sq km)
within Noise Limited Contour	345555	25730.1
not affected by terrain losses	344697	25662.0
lost to NTSC IX	10738	449.0
lost to additional IX by ATV	5657	1655.7
lost to ATV IX only	5657	1687.8
lost to all IX	16395	2104.8

Potential Interfering Stations Included in above Scenario 1

8N AL SELMA	BMLCT	20020312AAC	LIC
8N GA WAYCROSS	BLCT	1161	LIC
9A FL PANAMA CITY	BMPCDT	20011003AAK	CP

After Analysis

Results for: 8A FL PANAMA CITY BPRM 20000328AAF APP  
 HAAT 265.0 m, ATV ERP 27.0 kW

	POPULATION	AREA (sq km)
within Noise Limited Contour	345555	25730.1
not affected by terrain losses	344697	25662.0
lost to NTSC IX	10738	449.0
lost to additional IX by ATV	5732	1667.8
lost to ATV IX only	5741	1711.9
lost to all IX	16470	2116.8

Potential Interferring Stations Included in above Scenario 1

8N AL SELMA	BMLCT	20020312AAC	LIC
8N GA WAYCROSS	BLCT	1161	LIC
9A FL PANAMA CITY	BMPCDT	20011003AAK	CP
8A GA Dawson	CUR	PROPOSED	APR
*Percent Service lost without proposal:	0.0	to BPRM	20000328AAF
*Percent Service lost with proposal:	0.0	to BPRM	20000328AAF

Result key: 10  
 Scenario 2 Affected station 7  
 Before Analysis

Results for: 8A FL PANAMA CITY BPRM 20000328AAF APP  
 HAAT 265.0 m, ATV ERP 27.0 kW

	POPULATION	AREA (sq km)
within Noise Limited Contour	345555	25730.1
not affected by terrain losses	344697	25662.0
lost to NTSC IX	10738	449.0
lost to additional IX by ATV	5650	1647.7
lost to ATV IX only	5650	1679.8
lost to all IX	16388	2096.7

Potential Interferring Stations Included in above Scenario 2

8N AL SELMA	BMLCT	20020312AAC	LIC
8N GA WAYCROSS	BLCT	1161	LIC
9A FL PANAMA CITY	BPRM	20000411AAB	APP

After Analysis

Results for: 8A FL PANAMA CITY BPRM 20000328AAF APP  
 HAAT 265.0 m, ATV ERP 27.0 kW

	POPULATION	AREA (sq km)
within Noise Limited Contour	345555	25730.1
not affected by terrain losses	344697	25662.0
lost to NTSC IX	10738	449.0
lost to additional IX by ATV	5725	1659.8
lost to ATV IX only	5734	1703.8
lost to all IX	16463	2108.8



Potential Interfering Stations Included in above Scenario 2

8N AL SELMA	BMLCT	20020312AAC	LIC	
8N GA WAYCROSS	BLCT	1161	LIC	
9A FL PANAMA CITY	BPRM	20000411AAB	APP	
8A GA Dawson	CUR	PROPOSED	APR	
*Percent Service lost without proposal:	0.0	to BPRM		20000328AAF
*Percent Service lost with proposal:	0.0	to BPRM		20000328AAF

#####

Analysis of Interference to Affected Station 8

#### NTSC Baseline Analysis

Channel	Call	City/State	Application	Ref. No.
08	WGTV	ATHENS GA	DTVPLN	-NPLN0528

#### Stations Potentially Affecting This Station

Chan	Call	City/State	Dist(km)	Status	Application	Ref. No.
07	WCIQ	MOUNT CHEAHA AL	158.1	PLN	DTVPLN	-NPLN0456
07	WDCO-DT	COCHRAN GA	170.0	PLN	DTVPLN	-DTVP0031
08	WAKA	SELMA AL	307.0	PLN	DTVPLN	-NPLN0517
08	WXGATV	WAYCROSS GA	322.7	PLN	DTVPLN	-NPLN0529
08	WOLO-DT	COLUMBIA SC	293.1	PLN	DTVPLN	-DTVP0049
08	WVLT-TV	KNOXVILLE TN	245.8	PLN	DTVPLN	-NPLN0565
08	WDCN	NASHVILLE TN	349.3	PLN	DTVPLN	-NPLN0566
09	WTVM	COLUMBUS GA	175.0	PLN	DTVPLN	-NPLN0588
09	WNTV-DT	GREENVILLE SC	203.1	PLN	DTVPLN	-DTVP0059
09	WTVC	CHATTANOOGA TN	185.1	PLN	DTVPLN	-NPLN0624

Results for:	8N GA ATHENS	DTVPLN	NPLN0528	PLN
		POPULATION	AREA (sq km)	
within Noise Limited Contour		3399871	30091.9	
not affected by terrain losses		3352342	28224.2	
lost to NTSC IX		88058	2401.9	
lost to additional IX by ATV		0	0.0	
lost to all IX		88058	2401.9	

#### Analysis of current record

Channel	Call	City/State	Application	Ref. No.
08	WGTV	ATHENS GA	BMLET	-19890727KG

#### Stations Potentially Affecting This Station

Chan	Call	City/State	Dist(km)	Status	Application	Ref. No.
07	WCIQ	MOUNT CHEAHA AL	158.1	LIC	BLET	-405
07	WDCO-DT	COCHRAN GA	170.0	CP	BPEDT	-20000425AAQ
07	WDCO-DT	COCHRAN GA	170.0	PLN	DTVPLN	-DTVP0031
08	WAKA	SELMA AL	307.0	LIC	BMLCT	-20020312AAC
08	WJHG-DT	PANAMA CITY FL	393.3	APP	BMPCDT	-20010906ABJ
08	WJHG-TV	PANAMA CITY FL	393.3	APP	BPRM	-20000328AAF
08	WXGA-TV	WAYCROSS GA	322.7	LIC	BLCT	-1161

08	WOLO-DT	COLUMBIA SC	293.1	PLN	DTVPLN	-DTVP0049
08	WVLT-TV	KNOXVILLE TN	245.8	LIC	BLCT	-19881223KE
08	WDCN	NASHVILLE TN	349.3	LIC	BLET	-363
09	WJSU-TV	ANNISTON AL	211.3	APP	BPRM	-20010418ABL
09	WTVM	COLUMBUS GA	175.0	LIC	BLCT	-1079
09	WNTV-DT	GREENVILLE SC	203.1	CP	BPEDT	-20000428ACZ
09	WNTV-DT	GREENVILLE SC	203.1	PLN	DTVPLN	-DTVP0059
09	WTVG	CHATTANOOGA TN	185.1	CP	BPCT	-20000418AAS
08	WACS-D.P	Dawson GA	211.1	APR	CUR	-PROPOSED

Total scenarios = 1

Result key: 11  
 Scenario 1 Affected station 8  
 Before Analysis

Results for:	8N GA ATHENS	BMLET	19890727KG	LIC
		POPULATION	AREA (sq km)	
	within Noise Limited Contour	3399871	30091.9	
	not affected by terrain losses	3352342	28224.2	
	lost to NTSC IX	88117	2413.9	
	lost to additional IX by ATV	0	0.0	
	lost to all IX	88117	2413.9	

Potential Interferring Stations Included in above Scenario 1

7N AL MOUNT CHEAHA	BLET	405	LIC
8N AL SELMA	BMLCT	20020312AAC	LIC
8N GA WAYCROSS	BLCT	1161	LIC
8N TN NASHVILLE	BLET	363	LIC
9N GA COLUMBUS	BLCT	1079	LIC
9N TN CHATTANOOGA	BPCT	20000418AAS	CP

After Analysis

Results for:	8N GA ATHENS	BMLET	19890727KG	LIC
		POPULATION	AREA (sq km)	
	within Noise Limited Contour	3399871	30091.9	
	not affected by terrain losses	3352342	28224.2	
	lost to NTSC IX	88117	2413.9	
	lost to additional IX by ATV	1524	132.5	
	lost to all IX	89641	2546.5	

Potential Interferring Stations Included in above Scenario 1

7N AL MOUNT CHEAHA	BLET	405	LIC
8N AL SELMA	BMLCT	20020312AAC	LIC
8N GA WAYCROSS	BLCT	1161	LIC
8N TN NASHVILLE	BLET	363	LIC
9N GA COLUMBUS	BLCT	1079	LIC
9N TN CHATTANOOGA	BPCT	20000418AAS	CP
8A GA Dawson	CUR	PROPOSED	APR

*Percent new DTV interference without proposal:	0.0	BMLET	19890727KG
*Percent new DTV interference with proposal:	0.0	BMLET	19890727KG

#####

Analysis of Interference to Affected Station 9

NTSC Baseline Analysis

Channel	Call	City/State	Application	Ref. No.
08	WXGATV	WAYCROSS GA	DTVPLN	-NPLN0529

Stations Potentially Affecting This Station

Chan	Call	City/State	Dist(km)	Status	Application	Ref. No.
07	WJCT	JACKSONVILLE FL	141.7	PLN	DTVPLN	-NPLN0465
07	WDCO-DT	COCHRAN GA	152.9	PLN	DTVPLN	-DTVP0031
08	WAKA	SELMA AL	411.0	PLN	DTVPLN	-NPLN0517
08	WFLATV	TAMPA FL	376.8	PLN	DTVPLN	-NPLN0527
08	WGTW	ATHENS GA	322.7	PLN	DTVPLN	-NPLN0528
08	WOLO-DT	COLUMBIA SC	348.6	PLN	DTVPLN	-DTVP0049
09	WVANTV	SAVANNAH GA	136.9	PLN	DTVPLN	-NPLN0589

Results for:	8N GA WAYCROSS	DTVPLN	NPLN0529	PLN
		POPULATION	AREA (sq km)	
within Noise Limited Contour	386473	29245.0		
not affected by terrain losses	384301	28806.0		
lost to NTSC IX	42538	3620.4		
lost to additional IX by ATV	0	0.0		
lost to all IX	42538	3620.4		

Analysis of current record

Channel	Call	City/State	Application	Ref. No.
08	WXGA-TV	WAYCROSS GA	BLCT	-1161

Stations Potentially Affecting This Station

Chan	Call	City/State	Dist(km)	Status	Application	Ref. No.
07	WJCT	JACKSONVILLE FL	141.7	LIC	BLET	-19851004KG
07	WDCO-DT	COCHRAN GA	152.9	CP	BPEDT	-20000425AAQ
07	WDCO-DT	COCHRAN GA	152.9	PLN	DTVPLN	-DTVP0031
08	WAKA	SELMA AL	411.1	LIC	BMLCT	-20020312AAC
08	WJHG-DT	PANAMA CITY FL	284.9	APP	BMPCDT	-20010906ABJ
08	WJHG-TV	PANAMA CITY FL	284.9	APP	BPRM	-20000328AAF
08	WFLA-TV	TAMPA FL	376.8	LIC	BLCT	-19871223KF
08	WGTW	ATHENS GA	322.7	LIC	BMLET	-19890727KG
08	WOLO-DT	COLUMBIA SC	348.6	PLN	DTVPLN	-DTVP0049
09	WVAN-TV	SAVANNAH GA	136.9	LIC	BLET	-85
09	WXGA-TV	WAYCROSS GA	0.0	APP	BPRM	-20010327AJD
08	WACS-D.P	Dawson GA	203.8	APR	CUR	-PROPOSED

Total scenarios = 3

Result key: 12  
Scenario 1 Affected station 9  
Before Analysis

Results for:	8N GA WAYCROSS	BLCT	1161	LIC
--------------	----------------	------	------	-----

	POPULATION	AREA (sq km)
within Noise Limited Contour	386473	29245.0
not affected by terrain losses	384301	28806.0
lost to NTSC IX	42538	3620.4
lost to additional IX by ATV	0	0.0
lost to all IX	42538	3620.4

Potential Interferring Stations Included in above Scenario 1

7N FL JACKSONVILLE	BLET	19851004KG	LIC
8N FL TAMPA	BLCT	19871223KF	LIC
8N GA ATHENS	BMLET	19890727KG	LIC
9N GA SAVANNAH	BLET	85	LIC
7A GA COCHRAN	BPEDT	20000425AAQ	CP

#### After Analysis

Results for: 8N GA WAYCROSS BLCT 1161 LIC

	POPULATION	AREA (sq km)
within Noise Limited Contour	386473	29245.0
not affected by terrain losses	384301	28806.0
lost to NTSC IX	42538	3620.4
lost to additional IX by ATV	35374	845.7
lost to all IX	77912	4466.1

Potential Interferring Stations Included in above Scenario 1

7N FL JACKSONVILLE	BLET	19851004KG	LIC
8N FL TAMPA	BLCT	19871223KF	LIC
8N GA ATHENS	BMLET	19890727KG	LIC
9N GA SAVANNAH	BLET	85	LIC
7A GA COCHRAN	BPEDT	20000425AAQ	CP
8A GA Dawson	CUR	PROPOSED	APR

The following station failed the de minimis interference criteria.

8D GA Dawson CUR PROPOSED  
 ERP 5.00 kW HAAT 331.0 m RCAMSL 463.0 m  
 Antenna CDB 00000000000001

Due to interference to the following station and scenario: 1

8N GA WAYCROSS BLCT 1161  
 ERP 316.00 kW HAAT 314.0 m RCAMSL 364.0 m  
 Antenna none

Percent new DTV interference without proposal:	0.0	BLCT	1161
Percent new DTV interference with proposal:	9.2	BLCT	1161

Result key: 13  
 Scenario 2 Affected station 9  
 Before Analysis

Results for: 8N GA WAYCROSS BLCT 1161 LIC

	POPULATION	AREA (sq km)
within Noise Limited Contour	386473	29245.0
not affected by terrain losses	384301	28806.0
lost to NTSC IX	42538	3620.4

lost to additional IX by ATV	3603	310.1
lost to all IX	46141	3930.5

Potential Interferring Stations Included in above Scenario 2

7N FL JACKSONVILLE	BLET	19851004KG	LIC
8N FL TAMPA	BLCT	19871223KF	LIC
8N GA ATHENS	BMLET	19890727KG	LIC
9N GA SAVANNAH	BLET	85	LIC
7A GA COCHRAN	BPEDT	20000425AAQ	CP
8A FL PANAMA CITY	BMPCDT	20010906ABJ	APP

After Analysis

Results for: 8N GA WAYCROSS	BLCT	1161	LIC
	POPULATION	AREA (sq km)	
within Noise Limited Contour	386473	29245.0	
not affected by terrain losses	384301	28806.0	
lost to NTSC IX	42538	3620.4	
lost to additional IX by ATV	36951	1010.8	
lost to all IX	79489	4631.2	

Potential Interferring Stations Included in above Scenario 2

7N FL JACKSONVILLE	BLET	19851004KG	LIC
8N FL TAMPA	BLCT	19871223KF	LIC
8N GA ATHENS	BMLET	19890727KG	LIC
9N GA SAVANNAH	BLET	85	LIC
7A GA COCHRAN	BPEDT	20000425AAQ	CP
8A FL PANAMA CITY	BMPCDT	20010906ABJ	APP
8A GA Dawson	CUR	PROPOSED	APR

The following station failed the de minimis interference criteria.

8D GA Dawson	CUR	PROPOSED
ERP 5.00 kW HAAT 331.0 m	RCAMSL	463.0 m
Antenna CDB 00000000000001		

Due to interference to the following station and scenario: 2

8N GA WAYCROSS	BLCT	1161
ERP 316.00 kW HAAT 314.0 m	RCAMSL	364.0 m
Antenna none		

Percent new DTV interference without proposal:	0.9	BLCT	1161
Percent new DTV interference with proposal:	9.6	BLCT	1161

Result key: 14  
Scenario 3 Affected station 9  
Before Analysis

Results for: 8N GA WAYCROSS	BLCT	1161	LIC
	POPULATION	AREA (sq km)	
within Noise Limited Contour	386473	29245.0	
not affected by terrain losses	384301	28806.0	
lost to NTSC IX	42538	3620.4	
lost to additional IX by ATV	368	32.2	
lost to all IX	42906	3652.6	

Potential Interfering Stations Included in above Scenario 3

7N FL JACKSONVILLE	BLET	19851004KG	LIC
8N FL TAMPA	BLCT	19871223KF	LIC
8N GA ATHENS	BMLET	19890727KG	LIC
9N GA SAVANNAH	BLET	85	LIC
7A GA COCHRAN	BPEDT	20000425AAQ	CP
8A FL PANAMA CITY	BPRM	20000328AAF	APP

#### After Analysis

Results for: 8N GA WAYCROSS	BLCT	1161	LIC
	POPULATION	AREA (sq km)	
within Noise Limited Contour	386473	29245.0	
not affected by terrain losses	384301	28806.0	
lost to NTSC IX	42538	3620.4	
lost to additional IX by ATV	35607	869.9	
lost to all IX	78145	4490.2	

Potential Interfering Stations Included in above Scenario 3

7N FL JACKSONVILLE	BLET	19851004KG	LIC
8N FL TAMPA	BLCT	19871223KF	LIC
8N GA ATHENS	BMLET	19890727KG	LIC
9N GA SAVANNAH	BLET	85	LIC
7A GA COCHRAN	BPEDT	20000425AAQ	CP
8A FL PANAMA CITY	BPRM	20000328AAF	APP
8A GA Dawson	CUR	PROPOSED	APR

The following station failed the de minimis interference criteria.

8D GA Dawson	CUR	PROPOSED
ERP 5.00 kW HAAT 331.0 m	RCAMSL	463.0 m
Antenna CDB 00000000000001		

Due to interference to the following station and scenario: 3

8N GA WAYCROSS	BLCT	1161
ERP 316.00 kW HAAT 314.0 m	RCAMSL	364.0 m
Antenna none		

Percent new DTV interference without proposal:	0.1	BLCT	1161
Percent new DTV interference with proposal:	9.2	BLCT	1161

#####

#### Analysis of Interference to Affected Station 10

#### DTV Baseline Analysis

Channel	Call	City/State	Application Ref. No.
08	WOLO-DT	COLUMBIA SC	DTVPLN -DTVP0049

#### Stations Potentially Affecting This Station

Chan	Call	City/State	Dist(km)	Status	Application Ref. No.
------	------	------------	----------	--------	----------------------

07	WITV	CHARLESTON SC	173.0	PLN	DTVPLN	-NPLN0499
07	WSPATV	SPARTANBURG SC	172.3	PLN	DTVPLN	-NPLN0500
08	WGTV	ATHENS GA	293.1	PLN	DTVPLN	-NPLN0528
08	WXGATV	WAYCROSS GA	348.6	PLN	DTVPLN	-NPLN0529
08	WGHPTV	HIGH POINT NC	221.0	PLN	DTVPLN	-NPLN0547
08	WFXI	MOREHEAD CITY NC	420.2	PLN	DTVPLN	-NPLN0548
08	WVLTTV	KNOXVILLE TN	345.4	PLN	DTVPLN	-NPLN0565
09	WVANTV	SAVANNAH GA	220.4	PLN	DTVPLN	-NPLN0589
09	WSOCTV	CHARLOTTE NC	135.9	PLN	DTVPLN	-NPLN0608
09	WNTV-DT	GREENVILLE SC	163.8	PLN	DTVPLN	-DTVP0059

Results for: 8A SC COLUMBIA DTVPLN DTVP0049 PLN  
 HAAT 253.0 m, ATV ERP 3.2 kW

	POPULATION	AREA (sq km)
within Noise Limited Contour	790540	17867.3
not affected by terrain losses	789394	17590.8
lost to NTSC IX	10676	841.5
lost to additional IX by ATV	0	0.0
lost to ATV IX only	0	0.0
lost to all IX	10676	841.5

#### NTSC Baseline Analysis

Channel	Call	City/State	Application	Ref. No.
25	WOLOTV	COLUMBIA SC	DTVPLN	-NPLN1257

#### Stations Potentially Affecting This Station

Chan	Call	City/State	Dist(km)	Status	Application	Ref. No.
17	WLTX-DT	COLUMBIA SC	20.4	PLN	DTVPLN	-DTVP0280
18	WCCB	CHARLOTTE NC	136.3	PLN	DTVPLN	-NPLN1024
18	WNEH-DT	GREENWOOD SC	114.6	PLN	DTVPLN	-DTVP0322
24	WTVI-DT	CHARLOTTE NC	139.3	PLN	DTVPLN	-DTVP0574
24	WTATTV	CHARLESTON SC	172.0	PLN	DTVPLN	-NPLN1224
25	WATL-DT	ATLANTA GA	311.1	PLN	DTVPLN	-DTVP0598
25	WUNF-DT	ASHEVILLE NC	222.5	PLN	DTVPLN	-DTVP0608
25	WUNKTV	GREENVILLE NC	350.3	PLN	DTVPLN	-NPLN1252
25	WUNU-DT	LUMBERTON NC	195.6	PLN	DTVPLN	-DTVP0609
26	WAGT	AUGUSTA GA	106.2	PLN	DTVPLN	-NPLN1272
27	WCCB-DT	CHARLOTTE NC	136.3	PLN	DTVPLN	-DTVP0676
27	WRJATV	SUMTER SC	68.3	PLN	DTVPLN	-NPLN1316
28	WRJA-DT	SUMTER SC	68.3	PLN	DTVPLN	-DTVP0725
32	WRLK-DT	COLUMBIA SC	8.0	PLN	DTVPLN	-DTVP0880
33	WEBA-DT	ALLENDALE SC	104.1	PLN	DTVPLN	-DTVP0917
33	WJPMTV	FLORENCE SC	116.4	PLN	DTVPLN	-NPLN1458
40	WFBCTV	ANDERSON SC	135.4	PLN	DTVPLN	-NPLN1595

Results for: 25N SC COLUMBIA DTVPLN NPLN1257 PLN

	POPULATION	AREA (sq km)
within Noise Limited Contour	777605	17158.1
not affected by terrain losses	777499	17098.0
lost to NTSC IX	20262	1478.6
lost to additional IX by ATV	39882	2404.2
lost to all IX	60144	3882.8

#### Analysis of current record

Channel	Call	City/State	Application	Ref. No.
08	WOLO-DT	COLUMBIA SC	DTVPLN	-DTVP0049

# Stations Potentially Affecting This Station

Chan	Call	City/State	Dist(km)	Status	Application	Ref. No.
07	WITV	CHARLESTON SC	173.0	LIC	BLET	-19900809KE
07	WSPA-TV	SPARTANBURG SC	172.3	CP	BPCT	-20000428ABA
08	WGTV	ATHENS GA	293.1	LIC	BMLET	-19890727KG
08	WXGA-TV	WAYCROSS GA	348.6	LIC	BLCT	-1161
08	WGHP	HIGH POINT NC	221.0	LIC	BLCT	-1313
08	WFXI	MOREHEAD CITY NC	420.2	LIC	BLCT	-19891117KI
08	WVLT-TV	KNOXVILLE TN	345.4	LIC	BLCT	-19881223KE
08	WVSX	LEWISBURG WV	413.8	APP	BPRM	-20020309AAA
09	WVAN-TV	SAVANNAH GA	220.4	LIC	BLET	-85
09	WSOC-TV	CHARLOTTE NC	135.9	LIC	BLCT	-20000726AAR
09	WNTV-DT	GREENVILLE SC	163.8	CP	BPEDT	-20000428ACZ
09	WNTV-DT	GREENVILLE SC	163.8	PLN	DTVPLN	-DTVP0059
08	WACS-D.P	Dawson GA	408.0	APR	CUR	-PROPOSED

Proposal causes no interference

#####

## Analysis of Interference to Affected Station 11

### Analysis of current record

Channel	Call	City/State	Application	Ref. No.
09	WPGX	PANAMA CITY FL	BPRM	-20000411AAB

# Stations Potentially Affecting This Station

Chan	Call	City/State	Dist(km)	Status	Application	Ref. No.
08	WJHG-DT	PANAMA CITY FL	22.8	APP	BMPCDT	-20010906ABJ
08	WJHG-TV	PANAMA CITY FL	22.8	APP	BPRM	-20000328AAF
09	WJSU-TV	ANNISTON AL	387.7	APP	BPRM	-20010418ABL
09	WALA-DT	MOBILE AL	236.4	CP	BPCDT	-19991028AEO
09	WALA-DT	MOBILE AL	236.4	PLN	DTVPLN	-DTVP0052
09	WTVM	COLUMBUS GA	239.9	LIC	BLCT	-1079
09	WVAN-TV	SAVANNAH GA	417.1	LIC	BLET	-85
09	WXGA-TV	WAYCROSS GA	290.7	APP	BPRM	-20010327AJD
10	WALB-TV	ALBANY GA	190.4	LIC	BLCT	-2413
08	WACS-D.P	Dawson GA	205.8	APR	CUR	-PROPOSED

Proposal causes no interference

#####

## Analysis of Interference to Affected Station 12

### Analysis of current record

Channel	Call	City/State	Application	Ref. No.
09	WPGX	PANAMA CITY FL	BMPCDT	-20011003AAK

# Stations Potentially Affecting This Station

Chan	Call	City/State	Dist(km)	Status	Application	Ref. No.
------	------	------------	----------	--------	-------------	----------



08	WJHG-DT	PANAMA CITY FL	22.8	APP	BMPCDT	-20010906ABJ
08	WJHG-TV	PANAMA CITY FL	22.8	APP	BPRM	-20000328AAF
09	WJSU-TV	ANNISTON AL	387.7	APP	BPRM	-20010418ABL
09	WALA-DT	MOBILE AL	236.4	CP	BPCDT	-19991028AEO
09	WALA-DT	MOBILE AL	236.4	PLN	DTVPLN	-DTVP0052
09	WTVM	COLUMBUS GA	239.9	LIC	BLCT	-1079
09	WVAN-TV	SAVANNAH GA	417.1	LIC	BLET	-85
09	WXGA-TV	WAYCROSS GA	290.7	APP	BPRM	-20010327AJD
10	WALB-TV	ALBANY GA	190.4	LIC	BLCT	-2413
08	WACS-D.P	Dawson GA	205.8	APR	CUR	-PROPOSED

Proposal causes no interference

#####

### Analysis of Interference to Affected Station 13

#### NTSC Baseline Analysis

Channel	Call	City/State	Application	Ref. No.
09	WTVM	COLUMBUS GA	DTVPLN	-NPLN0588

#### Stations Potentially Affecting This Station

Chan	Call	City/State	Dist(km)	Status	Application	Ref. No.
08	WAKA	SELMA AL	189.1	PLN	DTVPLN	-NPLN0517
08	WGTV	ATHENS GA	175.0	PLN	DTVPLN	-NPLN0528
09	WALA-DT	MOBILE AL	338.9	PLN	DTVPLN	-DTVP0052
09	WVANTV	SAVANNAH GA	297.9	PLN	DTVPLN	-NPLN0589
09	WNTV-DT	GREENVILLE SC	364.2	PLN	DTVPLN	-DTVP0059
09	WTVG	CHATTANOOGA TN	319.3	PLN	DTVPLN	-NPLN0624
10	WALBTV	ALBANY GA	140.3	PLN	DTVPLN	-NPLN0645
10	WXIA-DT	ATLANTA GA	164.7	PLN	DTVPLN	-DTVP0070

Results for:	9N GA COLUMBUS	DTVPLN	NPLN0588	PLN
		POPULATION	AREA (sq km)	
within Noise Limited Contour		1000871	40146.4	
not affected by terrain losses		945064	37433.2	
lost to NTSC IX		221563	6297.3	
lost to additional IX by ATV		1107	201.6	
lost to all IX		222670	6498.9	

#### Analysis of current record

Channel	Call	City/State	Application	Ref. No.
09	WTVM	COLUMBUS GA	BLCT	-1079

#### Stations Potentially Affecting This Station

Chan	Call	City/State	Dist(km)	Status	Application	Ref. No.
08	WAKA	SELMA AL	189.2	LIC	BMLCT	-20020312AAC
08	WJHG-DT	PANAMA CITY FL	218.6	APP	BMPCDT	-20010906ABJ
08	WJHG-TV	PANAMA CITY FL	218.6	APP	BPRM	-20000328AAF
08	WGTV	ATHENS GA	175.0	LIC	BMLET	-19890727KG
09	WJSU-TV	ANNISTON AL	209.0	APP	BPRM	-20010418ABL
09	WALA-DT	MOBILE AL	338.9	CP	BPCDT	-19991028AEO
09	WALA-DT	MOBILE AL	338.9	PLN	DTVPLN	-DTVP0052
09	WPGX	PANAMA CITY FL	239.9	APP	BPRM	-20000411AAB

09	WPGX	PANAMA CITY FL	239.9	CP MOD	BMPCDT	-20011003AAK
09	WVAN-TV	SAVANNAH GA	297.9	LIC	BLET	-85
09	WXGA-TV	WAYCROSS GA	241.8	APP	BPRM	-20010327AJD
09	WNTV-DT	GREENVILLE SC	364.3	CP	BPEDT	-20000428ACZ
09	WNTV-DT	GREENVILLE SC	364.2	PLN	DTVPLN	-DTVP0059
09	WTVG	CHATTANOOGA TN	319.2	CP	BPCT	-20000418AAS
10	WXIA-DT	ALANTA GA	164.7	CP	BPCDT	-20000501AFP
10	WALB-TV	ALBANY GA	140.3	LIC	BLCT	-2413
10	WXIA-DT	ATLANTA GA	164.7	PLN	DTVPLN	-DTVP0070
08	WACS-D.P	Dawson GA	47.9	APR	CUR	-PROPOSED

Proposal causes no interference

#####

#### Analysis of Interference to Affected Station 14

##### Analysis of current record

Channel	Call	City/State	Application	Ref. No.
09	WXGA-TV	WAYCROSS GA	BPRM	-20010327AJD

##### Stations Potentially Affecting This Station

Chan	Call	City/State	Dist(km)	Status	Application	Ref. No.
08	WXGA-TV	WAYCROSS GA	0.0	LIC	BLCT	-1161
09	WFTV	ORLANDO FL	324.2	LIC	BLCT	-19991028AAY
09	WPGX	PANAMA CITY FL	290.7	APP	BPRM	-20000411AAB
09	WPGX	PANAMA CITY FL	290.7	CP MOD	BMPCDT	-20011003AAK
09	WTVM	COLUMBUS GA	241.8	LIC	BLCT	-1079
09	WVAN-TV	SAVANNAH GA	136.9	LIC	BLET	-85
09	WNTV-DT	GREENVILLE SC	413.8	CP	BPEDT	-20000428ACZ
09	WNTV-DT	GREENVILLE SC	413.7	PLN	DTVPLN	-DTVP0059
10	WJXX-DT	ORANGE PARK FL	143.5	CP	BPCDT	-19991019ABU
10	WJXX-DT	ORANGE PARK FL	147.1	PLN	DTVPLN	-DTVP0069
10	WALB-TV	ALBANY GA	123.0	LIC	BLCT	-2413
08	WACS-D.P	Dawson GA	203.8	APR	CUR	-PROPOSED

Proposed station is beyond the site to  
nearest cell evaluation distance

#####

#### Analysis of Interference to Affected Station 15

##### Analysis of current record

Channel	Call	City/State	Application	Ref. No.
08	WACS-D.P	Dawson GA	CUR	-PROPOSED

##### Stations Potentially Affecting This Station

Chan	Call	City/State	Dist(km)	Status	Application	Ref. No.
07	WCIQ	MOUNT CHEAHA AL	208.3	LIC	BLET	-405
07	WJHG-TV	PANAMA CITY FL	186.1	LIC	BLCT	-1360
07	WDCO-DT	COCHRAN GA	135.8	CP	BPEDT	-20000425AAQ

07	WDCO-DT	COCHRAN GA	135.8	PLN	DTVPLN	-DTVP0031
08	WAKA	SELMA AL	211.1	LIC	BMLCT	-20020312AAC
08	WJHG-DT	PANAMA CITY FL	186.1	APP	BMPCDT	-20010906ABJ
08	WJHG-TV	PANAMA CITY FL	186.1	APP	BPRM	-20000328AAF
08	WGTV	ATHENS GA	211.1	LIC	BMLET	-19890727KG
08	WXGA-TV	WAYCROSS GA	203.8	LIC	BLCT	-1161
08	WOLO-DT	COLUMBIA SC	408.0	PLN	DTVPLN	-DTVP0049
09	WPGX	PANAMA CITY FL	205.8	APP	BPRM	-20000411AAB
09	WPGX	PANAMA CITY FL	205.8	CP MOD	BMPCDT	-20011003AAK
09	WTVM	COLUMBUS GA	47.9	LIC	BLCT	-1079
09	WXGA-TV	WAYCROSS GA	203.8	APP	BPRM	-20010327AJD

Total scenarios = 3

Result key: 15  
 Scenario 1 Affected station 15  
 Before Analysis

Results for:	8A GA Dawson	CUR	PROPOSED	APR
HAAT	331.0 m, ATV ERP	5.0 kW		
	POPULATION	AREA (sq km)		
within Noise Limited Contour	550324	21243.8		
not affected by terrain losses	547766	20988.2		
lost to NTSC IX	141113	1824.9		
lost to additional IX by ATV	60	12.0		
lost to ATV IX only	298	59.9		
lost to all IX	141173	1836.9		

Potential Interferring Stations Included in above Scenario 1

8N AL SELMA	BMLCT	20020312AAC	LIC	
8N GA ATHENS	BMLET	19890727KG	LIC	
8N GA WAYCROSS	BLCT	1161	LIC	
9N GA COLUMBUS	BLCT	1079	LIC	
7A GA COCHRAN	BPEDT	20000425AAQ	CP	
*Percent Service lost without proposal:	0.0	to CUR	PROPOSED	
*Percent Service lost with proposal:	0.0	to CUR	PROPOSED	

Result key: 16  
 Scenario 2 Affected station 15  
 Before Analysis

Results for:	8A GA Dawson	CUR	PROPOSED	APR
HAAT	331.0 m, ATV ERP	5.0 kW		
	POPULATION	AREA (sq km)		
within Noise Limited Contour	550324	21243.8		
not affected by terrain losses	547766	20988.2		
lost to NTSC IX	141113	1824.9		
lost to additional IX by ATV	86	59.9		
lost to ATV IX only	3394	199.7		
lost to all IX	141199	1884.8		

Potential Interferring Stations Included in above Scenario 2

8N AL SELMA	BMLCT	20020312AAC	LIC
-------------	-------	-------------	-----

8N GA ATHENS	BMLET	19890727KG	LIC	
8N GA WAYCROSS	BLCT	1161	LIC	
9N GA COLUMBUS	BLCT	1079	LIC	
7A GA COCHRAN	BPEDT	20000425AAQ	CP	
8A FL PANAMA CITY	BMPCDT	20010906ABJ	APP	
*Percent Service lost without proposal:			0.0	to CUR PROPOSED
*Percent Service lost with proposal:			0.0	to CUR PROPOSED

Result key: 17  
Scenario 3 Affected station 15  
Before Analysis

Results for: 8A GA Dawson	CUR	PROPOSED	APR
HAAT 331.0 m, ATV ERP 5.0 kW			
	POPULATION	AREA (sq km)	
within Noise Limited Contour	550324	21243.8	
not affected by terrain losses	547766	20988.2	
lost to NTSC IX	141113	1824.9	
lost to additional IX by ATV	300	79.9	
lost to ATV IX only	1979	231.6	
lost to all IX	141413	1904.8	

Potential Interferring Stations Included in above Scenario 3

8N AL SELMA	BMLCT	20020312AAC	LIC	
8N GA ATHENS	BMLET	19890727KG	LIC	
8N GA WAYCROSS	BLCT	1161	LIC	
9N GA COLUMBUS	BLCT	1079	LIC	
7A GA COCHRAN	BPEDT	20000425AAQ	CP	
8A FL PANAMA CITY	BPRM	20000328AAF	APP	
*Percent Service lost without proposal:			0.0	to CUR PROPOSED
*Percent Service lost with proposal:			0.0	to CUR PROPOSED

#####  
FINISHED FINISHED FINISHED FINISHED FINISHED FINISHED