

Educational Media Foundation
5700 West Oaks Blvd, Rocklin, CA, 95843

Exhibit 12
Fayetteville, AR

REFERENCE CH# 278D - 103.5 MHz, Pwr= 0.041 kw, HAAT=237.0 M, COR= 591 M DISPLAY DATES
36 01 04 N Average Protected F(50-50)= 12.71 km DATA 06-18-03
94 13 08 W Ave. F(50-10) 40 dBu= 42.5 54 dBu= 19.0 80 dBu= 3.4 100 dBu= .4 SEARCH 06-23-03

CH CITY	CALL	TYPE STATE	AZI. <--	DIST FILE #	LAT. LNG.	Pwr(kw) HAAT(M)	COR(M) INT(km)	PRO(km) LICENSEE	*IN* (Overlap in km)	*OUT*
280C1 Fayetteville	KKIX	LIC NCN AR	13.9 193.9	0.41 BLH19900622KC	36 01 17 94 13 04	100.000 152	565 0.4	58.8 Capstar Tx Limited Partner	-18.51*	-58.80*
276D Fayetteville	K276CO	LIC DHN AR	0.0 180.0	0.00 BLFT19870804TB	36 01 04 94 13 08	0.056 114	587 0.4	9.5 Fred H. Baker, Jr.	-12.50*	-9.97*
279D Fayetteville	AP279	APP C AR	88.1 268.1	12.20 BNPFT20030314APN	36 01 17 94 05 01	0.062 221	630 16.1	13.6 Educational Media Foundati	-19.44	-17.46*
278D North Fort Smith	AP278	APP C AR	192.8 12.8	68.78 BNPFT20030314AFV	35 24 48 94 23 16	0.250 -17	178 36.3	7.1 Educational Media Foundati	34.10	25.41
278D Fort Smith	AP278	APP C AR	193.8 13.8	75.01 BNPFT20030317HRG	35 21 40 94 24 58	0.250 86	221 36.7	12.0 E-string Wireless, Ltd	22.72	26.33
278D Fort Smith	AP278	APP C AR	194.7 14.7	76.20 BNPFT20030312AGX	35 21 12 94 25 55	0.250 107	236 37.0	13.3 Community Broadcasting, In	19.55	25.95
278D Greenwood	AP278	APP C AR	182.6 2.6	87.62 BNPFT20030311AKS	35 13 44 94 15 46	0.250 108	245 31.1	13.4 Starboard Media Foundation	32.55	43.14
275C1 Harrison	KHOZFM	LIC CN AR	61.7 241.7	99.09 BLH19911223KI	36 26 11 93 14 43	100.000 306	650 0.4	72.8 Harrison Broadcasting Corp	77.07	25.83
277C Tulsa	KJSR«	LIC CN OK	270.5 90.5	129.61 BLH19810730AI	36 01 10 95 39 24	100.000 409	579 19.0	80.4 Cxr Holdings, Inc.	-2.43	30.24
278D Pocola	AP278	APP V OK	195.3 15.3	93.05 BNPFT20030317LLQ	35 12 32 94 29 25	0.050 168	299 37.0	11.3 Calvary Chapel Of Twin Fal	44.30	44.76
276C2 Waldron	KRWAFM	CP CX AR	167.8 347.8	117.91 BPH20030325AAI	34 58 44 93 56 42	6.100 505	705 0.4	57.6 Pharis Broadcasting, Inc.	103.44	59.89
278C3 Asbury	KWXD	LIC CN MO	345.2 165.2	158.31 BLH19940113KB	37 23 44 94 40 42	16.000 136	405 40.6	40.4 Innovative Broadcasting Co	36.55	77.33
279D Neosho	K279AD	LIC HN MO	356.4 176.4	87.65 BLFT19980225TR	36 48 22 94 16 51	0.072 76	427 17.9	8.2 Board Of Governors For Sou	63.89	61.53
276C2 Waldron	KRWAFM	LIC C AR	174.1 354.1	128.88 BLH20010723AAD	34 51 44 94 04 26	50.000 135	355 0.4	50.2 Pharis Broadcasting, Inc.	114.27	78.28

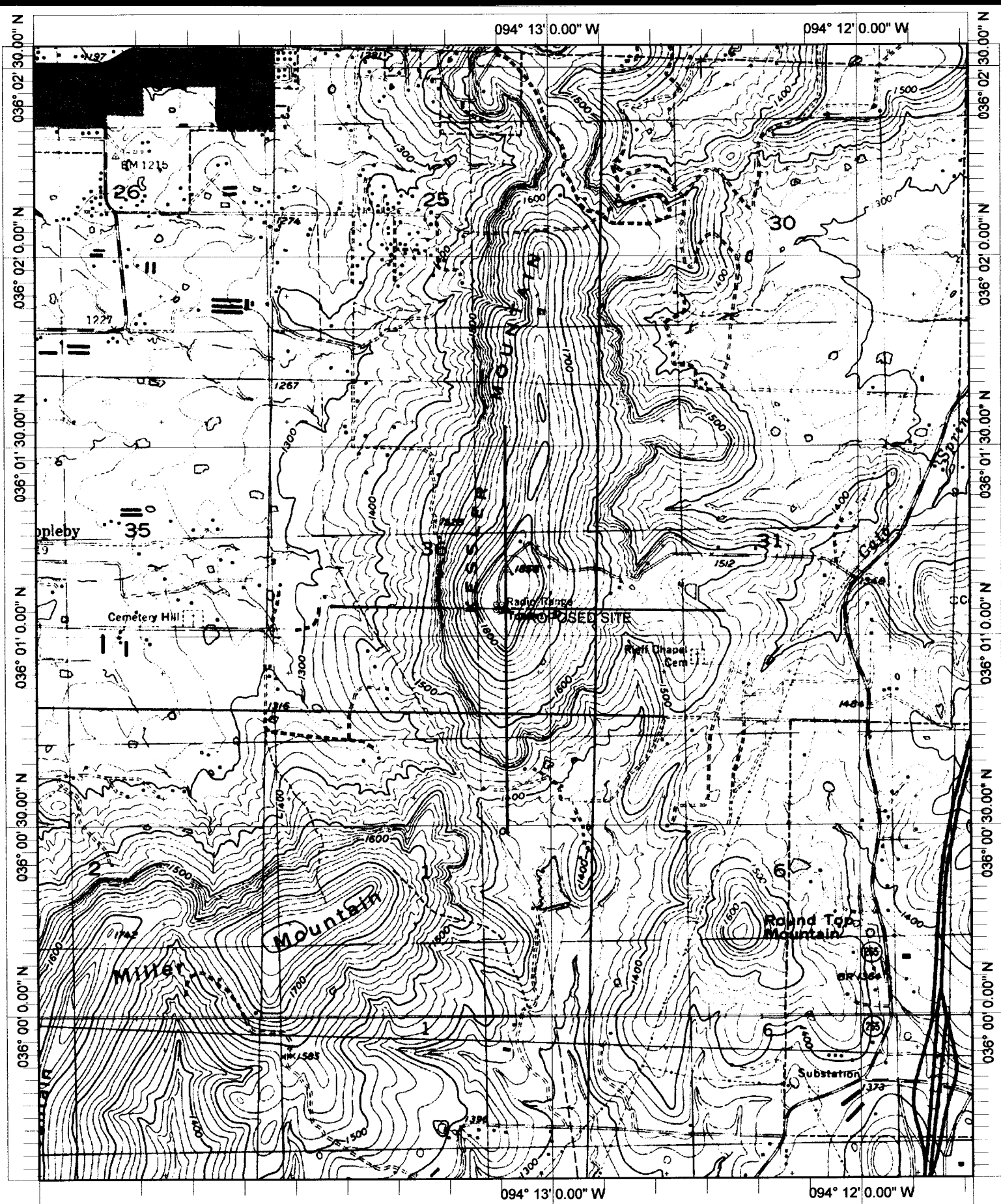
***Affixed to 'IN' or 'Out' values = site inside protected contour.
ERP and HAAT are on direct line to and from reference station.
"«" = Station meets FCC minimum distance spacing for its class.

Exhibit 12 (Compliance with CFR 74.1204)

The proposed FM Translator is located within the protected 60 dBu contour of second adjacent channel station KKIX, channel 280C1, Fayetteville, AR. The predicted F(50-50) field strength of KKIX at the proposed translator site is greater than 110 dBu. Therefore, the respective predicted interfering contour generated by the proposed FM Translator is greater than 150 dBu. This interfering contour extends less than 2 meters from the proposed transmit antenna, and the area of overlap does not reach the ground.

The proposed FM Translator is located within the protected 60 dBu contour of second adjacent channel station K276CO, channel 276D, Fayetteville, AR. The predicted F(50-50) field strength of K276CO at the proposed translator site is greater than 120 dBu. Therefore, the respective predicted interfering contour generated by the proposed FM Translator is greater than 160 dBu. This interfering contour extends less than 1 meters from the proposed transmit antenna, and the area of overlap does not reach the ground.

Therefore, EMF respectfully requests a waiver of C.F.R. 74.1204 based on no population within the area of predicted interference.



Name: FAYETTEVILLE
 Date: 8/13/2003
 Scale: 1 inch equals 2000 feet

Location: 036° 01' 03.9" N 094° 13' 09.0" W
 Caption: Exhibit 12 - Topo Map